



GONZAGA

W - BASKETBALL

2018-19 WOMEN'S BASKETBALL GAME NOTES >> BYU

BULLDOGS

16-1
OVERALL

5-0
WCC

#13/14
AP/COACHES
RANKING



Lisa Fortier
HEAD COACH

114-36 (.760)
RECORD AT GU
FIFTH SEASON

-VS-



14-3
OVERALL

6-0
WCC

+
AP/COACHES
RANKING

COUGARS

Jeff Judkins
HEAD COACH

381-179 (.680)
RECORD AT BYU
18th SEASON

SCHEDULE (H: 9-0; A: 5-0; N: 2-1)

Date	GU Rank	Opp Rank	Opponent	TV	Time/Result
NOVEMBER					
2	-	-	# CARROLL COLLEGE		W, 86-43
7	-	-	MONTANA	SWX	W, 76-52
11	-	-	at Eastern Washington	SWX	W, 63-51
13	-	-	IDAHO STATE		W, 70-51
17	-	-	at UNLV		W, 70-59
22	-	1/1	! vs. Notre Dame		L, 81-65
23	-	-	! vs. Rutgers		W, 57-40
24	-	-	! vs. Western Kentucky		W, 76-55
28	-	-	COLORADO STATE		W, 50-39

DECEMBER					
2	-	8/7	STANFORD	SWX	W, 79-73
9	24/22	-	WASHINGTON STATE	SWX	W, 76-53
16	21/21	-	at Missouri State		W, 70-67
20	21/21	-	IDAHO		W, 88-51
29	20/21	-	* at Loyola Marymount		W, 78-53
31	17/21	-	* at Pepperdine		W, 79-54

JANUARY					
3	17/18	-	* SAINT MARY'S		W, 72-64
5	17/18	-	* PACIFIC		W, 88-65
12	14/15	-	* PORTLAND	SWX	W, 97-71
17	13/14	-	* at BYU		6 p.m.
19	-	-	* at San Diego		2 p.m.
24	-	-	* SAN FRANCISCO		6 p.m.
26	-	-	* SANTA CLARA	SWX	2 p.m.
31	-	-	* at Pacific		7 p.m.

FEBRUARY					
2	-	-	* at Saint Mary's		6 p.m.
9	-	-	* at Portland		4:30 p.m.
14	-	-	* SAN DIEGO		6 p.m.
16	-	-	* BYU	SWX	2 p.m.
21	-	-	* at Santa Clara		7 p.m.
23	-	-	* at San Francisco		2 p.m.
28	-	-	* PEPPERDINE		6 p.m.

MARCH					
2	-	-	* LOYOLA MARYMOUNT		2 p.m.
7-12			% WCC Championships	TBD	TBD

All times are Pacific Time
 Rank: AP Top 25 / USA Today Coaches' Poll
 # Exhibition
 * West Coast Conference game
 ! Vancouver Showcase - Vancouver, British Columbia
 % WCC Championships - Las Vegas, Nev.

THIS DATE IN ZAG HISTORY

Jan. 12, 1995
 - The Bulldogs defeated visiting San Diego 77-64 in overtime. Gonzaga has only played in 28 overtime games in program history, and the Zags carry a 14-14 overall record with an 8-5 home overtime record.

SOCIAL MEDIA:
 Follow GONZAGA WOMEN'S BASKETBALL on the social media sites listed for up-to-date news, exclusive content and more. Follow us on Facebook, Instagram and Twitter @ZagWBB

SPORTS INFO:
 Sports Information Director (WBB)..... Jenna Larson
 Office Phone.....(509) 313-4227
 Email larsonj2@gonzaga.edu
 SID Mailing Address
 Gonzaga Athletics
 502 E. Boone Ave.
 Spokane, WA 99258-0066
 Web Site..... www.GoZags.com

SERIES AT A GLANCE	
OVERALL	Gonzaga leads 15-9
In Provo	10th meeting, BYU leads 5-4
Last Meeting	Gonzaga won 62-37 in Spokane



73.9	POINTS PER GAME	67.2
44.6	FG%	41.6
36.0	3FG%	33.5
75.3	FT%	68.4
40.6	REBOUNDS PER GAME	38.9
15.2	ASSISTS PER GAME	15.4
3.9	BLOCKS PER GAME	3.4
10.2	STEALS PER GAME	8.8
57.5	SCORING DEFENSE	60.5
36.6	FG% DEFENSE	37.1
27.9	3FG% DEFENSE	31.1
+8.1	REBOUND MARGIN	+1.5
1.1	AST-TO RATIO	1.1

GAME 18

GONZAGA (16-1, 5-0 WCC) VS BYU (14-3, 6-0 WCC)

JAN. 17, 2019 / 6 P.M. PT / PROVO, UTAH / MARRIOTT CENTER

STREAM: BYUtv

RADIO: KJRB 790 AM / 94.1 FM

(Play-by-play: Steve Myklebust)

THE TIP-OFF

- Gonzaga and BYU will meet for the 25th time in program history and the 10th time in Provo. Gonzaga holds a 15-9 advantage in the series, but the Cougars carry a 5-4 advantage in Provo. This game will be the 19th time the two squads meet as WCC opponents; BYU joined the conference during the 2011-12 season.

- The Zags are currently on a 12-game win streak, the longest so far of the season. The Bulldogs longest win streak in program history is 23 games, a feat they accomplished from Dec. 10, 2004 to March 6, 2005. The longest recent streak is 15-straight victories which occurred between Dec. 17, 2017 and Feb. 8, 2018.

- With its 5-0 start to WCC play, Gonzaga has now opened conference play with a 5-0 record nine times in program history. Two of those seasons (2004-05; 2009-10), the Bulldogs went on to have undefeated 14-0 conference records before the addition of BYU and return of Pacific to the WCC. Currently, the Zags hold the record for conference wins with 17, a feat they accomplished last season after posting a conference-best 17-1 record.

- The Zags continue to stretch their best start in program history as they carry a 16-1 overall mark following their 97-71 win over Portland on Jan. 12. Previously, their best start was an 8-2 mark, most recently during the 2013-14 season.

- Gonzaga is ranked for the sixth-straight week after entering the polls at

PROBABLE STARTERS



00 RICE



4 L. WIRTH



11 STOCKTON



24 CAMPBELL



30 SMITH

MIN -24.2	MIN -22.5	MIN -28.0	MIN -21.8	MIN -28.1
PPG -14.3	PPG -6.2	PPG -8.4	PPG -8.6	PPG -9.9
FG% - 51.0	FG% -41.0	FG% -39.0	FG% -44.0	FG% -37.0
3FG% -	3FG% -25.0	3FG% -23.0	3FG% -47.0	3FG% -20.0
REB -6.8	REB -4.1	AST -4.1	AST -0.9	AST -2.4
BLK -0.9	BLK -0.5	STL -2.1	STL -1.5	STL -1.4

GENERAL

Location..... Spokane, Wash.
 Founded..... 1887
 Total Enrollment 7,501
 Undergraduate 5,201
 Master's Students 1,688
 Doctoral Students 287
 Law Students 316
 Campus Size 152 acres
 Nickname..... Bulldogs
 Colors..... Navy and White
 Conference West Coast (WCC)

ADMINISTRATION

President Dr. Thayne M. McCulloh
 Athletic Director Mike Roth
 Athletic Phone (509) 313-4202
 Ticket Office Phone (509) 313-6000

SPORTS INFORMATION

Sports Information Director (WBB)..... Jenna Larson
 Office Phone..... (509) 313-4227
 Cell Phone..... (208) 479-4910
 Email larsonj2@gonzaga.edu
 SID Mailing Address
 Gonzaga Athletics
 502 E. Boone Ave.
 Spokane, WA 99258-0066
 Web Site..... www.GoZags.com
 Twitter @ZagWBB
 Instagram @ZagWBB
 Facebook /ZagWBB
 Snapchat @ZagsWBB

RADIO INFORMATION

Network Gonzaga IMG Radio Network
 Contact Mark Livingston
 Address
 Gonzaga Athletics
 502 E. Boone Ave.
 Spokane, WA 99258-0066
 Phone (509) 313-5729
 Play-by-Play Announcer Steve Myklebust

MCCARTHEY ATHLETIC CENTER

Year Opened 2004
 Capacity 6,000
 Sellouts 28
 Last Stanford (12/2/18)
 Record..... 195-26 (.882)
 Undefeated seasons (last) 3 (2013-14)
 Conference Record..... 104-8 (.929)
 Undefeated seasons (last) 6 (2013-14)

No. 24/22 on Dec. 3. Following their 97-71 win over Portland on Jan. 12, the Bulldogs moved up to 13th in the AP Poll on Jan. 14. It's the program's highest ranking ever, surpassing the previous high of #14, which was set on Jan. 7 of this season.

INSIDE THE SERIES

Overall: 25th meeting, Gonzaga leads 15-9
In Spokane: 9-2 | **In Provo:** 4-5 | **Neutral:** 2-2
Current Streak: Gonzaga, Won 2
Last Meeting: Gonzaga defeated BYU 62-37 in Spokane on Feb. 24, 2018.

Series Notes: Gonzaga and BYU meet for the 25th time in program history and the 10th time in Provo. The series dates back to the 1983-84 season when the Bulldogs hosted the Cougars as part of the Bulldog Invitational in Spokane. BYU claimed the edge in the first meeting, 80-63, but Gonzaga won the next meeting during the 1993-94 season, a 75-67 victory. Neither team has completely dominated the series, but Gonzaga claims the longest win streak of four games when the Bulldogs won four-straight from the 2012-13 season through the 2013-14 season.

- Throughout the series, Gonzaga has averaged 67.5 points per game while limiting BYU to 61.5. Gonzaga has not given up more than 80 points in the series and has limited BYU to as few as 37 points.

- In the last meeting, Gonzaga dominated BYU from the tip, sending the Bulldogs' seniors out with a victory, 62-37. It also set the single season WCC wins record with 17 as the Bulldogs finished the 2017-18 season with a 17-1 mark in WCC play. The Cougars netted the first basket of the game but went scoreless over the final 9:25 of the first quarter as the Bulldogs claimed a 16-2 advantage after the first 10. Three players finished in double-figures as Jill Barta, Emma Stach and Zykeria Rice each scored 11 points. Laura Stockton and Chandler Smith were close behind with nine points.

SCOUTING BYU:

- The Cougars are 14-3 overall on the season with an unblemished 6-0 mark in WCC play. Currently, BYU averages 67.2 points per game shooting 41.6 percent from the floor and 33.5 percent from long range.

- Through the first three weekends of conference play, BYU leads the league in assist-to-turnover ratio (1.1) and rank second in four categories: scoring defense (60.5 ppg), scoring margin (+6.6), field goal percentage defense (37.1), and assists (15.4).

- As of Jan. 15, BYU has the second-highest RPI in the WCC (Gonzaga leads at 11th). The Cougars have held steady at No. 28.

- During the nonconference slate, BYU posted an 8-3 record with losses to California, at Southern Utah and at Utah to finish 4-1 at home and 2-2 on the road with a 2-0 neutral record. Through the first six games of conference play, the Cougars have won four games on the road, including two last weekend that went down to the wire. At Pacific on Jan. 10, BYU made free throws down the stretch to secure the 77-74 win on the road. At Saint Mary's on Jan. 12, BYU led by 13 points early in the fourth quarter, yet a late Saint Mary's surge cut the lead to six (74-68) with 2:13 to go. Saint Mary's scored five unanswered to cut the lead to one point with 22 seconds remaining, but the Gaels missed a

last-second three point attempt to give the Cougars the 74-73 win.

- BYU is one of the tallest teams in the conference, with eight players six feet or taller (with the tallest coming in at 6-foot-7), with 11 players listed as 5-foot-10 or taller.

- Three players average double-figures for BYU, led by Shaylee Gonzales at 17.6 points per game. Paisley Johnson adds 14.2 while Brenna Chase averages 12.5 points per game.

- Gonzales also leads the team in rebounding with 5.6 rebounds per game. Jasmine Moody also grabs at least five boards a game as she averages 5.4.

- BYU relies heavily on its top five for minutes as three players average over 34 minutes per game (Chase, 36.8; Johnson, 35.1; Gonzales, 34.2), while Moody and Shalae Salmon add 23.4 and 22.9 minutes per game, respectively.

FLYING HIGH WITH CAREER NIGHTS

Jan. 12 against the Pilots was a career night for five Bulldogs, led by Zykeria Rice with a career-high 28 points off 11-of-13 from the floor to go along with seven boards, three assists, one block and one steal. Laura Stockton also finished with a career-high scoring total, tallying 19 points six rebounds, six assists and two steals. Stockton's six assists catapulted her to fourth-all time in career assists, surpassing Jazmine Redmon with 401 career assists. Katie Campbell added a career-high three assists in the win to go along with a career-high tying seven rebounds while both Jessie Loera and Melody Kempton finished with career-high tying marks. Loera dished out nine assists and five rebounds, matching her career highs in both categories, while Kempton added two steals, also her current career high.

#CLUTCHMOMENTS: BUZZER BEATERS

Though the Zags have not been in a position to have a game-winner as time expired, they have hit several shots this season as the buzzer sounded. Already this season, the Zags have hit a shot with less than four seconds on the clock, and nine different players have scored during those time frames. Rice, Chandler Smith and Jill Townsend have two buzzer-beaters on record this season, while LeeAnne Wirth, Jenn Wirth, Stockton, Kempton, Campbell and Loera have each converted one.

BULLDOGS KEEP ON CLIMBING

Gonzaga's recent jump to No. 13 in the AP Top 25 Poll marks its highest ranking ever and back-to-back record-setting rankings following GU's jump to No. 14 on Jan. 7. Previously, the Zags had been ranked as high as No. 15 in the Associated Press poll, a feat they accomplished March 20-27, 2010 (That same week, Gonzaga did reach a No. 14 ranking in the USA Today/WBCA Coaches Poll). That season (2009-10), Gonzaga entered the Top 25 poll at No. 24 on Feb. 6, 2010 following a 93-53 win over San Francisco. The Bulldogs continued to move up in the poll through WCC play, moving up to 22nd, 21st, 19th, 17th and finally 15th. The Bulldogs posted a 20-game win streak and advanced to the NCAA Sweet Sixteen that season.

MOVING ON UP

Laura Stockton dished out six assists in GU's 97-71 win over Portland to surpass Jazmine Redmon on the all-

GAME NOTES CONTINUED

time career assists list. Stockton now has 401 career assists to rank fourth all-time in GU history. She is 39 assists short of third place; former Zag Amy Simpson claims the third spot with 439 career assists. Currently, Stockton leads the team and ranks eighth in the conference with 4.1 assists per game. If she continues at that rate, it will take her less than 10 games to move into third all time.

KEEPING THE STREAK ALIVE

Katie Campbell is currently on a 15-game streak with at least one three-point field goal. Through the first 17 games, Campbell is 34-71 from long range and is shooting 47.9 percent to lead the Zags. Campbell's 47.9 percent also leads the WCC and ranks eighth in the nation.

ON TOP OF THE CONFERENCE

Through the first 16 games, Gonzaga leads the WCC in six statistical categories: scoring defense (56.6 ppg), scoring margin (+15.8 ppg), rebounding defense (32.8 rpg), rebounding margin (+6.8), steals (10.3) and turnover margin (+3.7). The Bulldogs also rank second in six statistical categories: free throw percentage (.767), field goal percentage defense (.366), three-point percentage (.369), three-point percentage defense (.286), blocked shots (4.1 bpg) and assist-to-turnover ratio (1.0). The Bulldogs also lead the the WCC in RPI (currently ranked 11th in the nation). BYU is the next closest WCC school, ranked 38th in the latest RPI rankings.

RICE RIPPING THROUGH THE WCC

Through the first four games of WCC play Zykeria Rice has:

1. Increased her scoring average by 7.1 points per game: 11.7 --- > 18.8
2. Increased her shooting percentage by 21 percent: .420 --- > .630
3. Picked up back-to-back WCC Player of the Week honors

NEARLY PERFECT

The Bulldogs are capitalizing on their opportunities at the line as they average 76.7 percent from the charity stripe through the first 16 games. Seven players are shooting at least 75 percent from the line, led by Stockton. Stockton has only missed two free throws all season (32-34), and is currently shooting 94.1 percent from the line to lead the WCC. Currently, Stockton averages 2.0 made free throws per game; national statistics require 2.5 made free throws per game to qualify. Katie Campbell is currently perfect from the line (18-18), but is only attempting 1.1 free throws per game. Chandler Smith has attempted the second-most free throws on the squad (46), and she is currently shooting 80 percent from the line (37-46).

SHOOTING HER WAY INTO THE RECORD BOOKS

Zykeria Rice posted a program best 11-of-12 performance from the field at Pepperdine on Dec 31. She shot 91.7 percent from the floor, which marks a new program record for field goal percentage in a single game (with at least 10 made field goals since 1999). Her 91.7

field goal percentage is the also the best single-game field goal percentage in the WCC this season. Rice also matched her own career-high in points with 23.

SECOND HALF SPURT

For the first time this season, the Zags netted 50+ points in a half. After scoring a combined 23 points in the first half at Loyola Marymount on Dec. 29, the Bulldogs exploded for 55 points in the second half. It marks the first time since March 2, 2018 that the GU had scored 50+ points in a single half. Previously, the Zags scored 53 points against Pepperdine in the first half.

DECEMBER: THE GIFT OF UNSTOPPABLE OFFENSE

Through the first four games of December, the Bulldogs have produced their top-three offensive games of the season: 88 points (vs. Idaho, 12/20); 79 points (vs. then No. 8/7 Stanford, 12/2); and 76 points (vs. Washington State, 12/9). Through the first four games of December, Gonzaga has averaged 78.25 points shooting 47.8 percent from the floor and 51.2 percent from long range. In addition, the Zags have dominated the glass, posting a +13.8 rebounding margin while hauling in an average of 42.0 rebounds per game.

SPREADING THE SCORING WEALTH

Similar to the entire non-conference, the first four games of December saw multiple Zags reach double-figures with a different high-scorer each game. Three players have averaged double-figures in December games: Chandler Smith (13.5), Zykeria Rice (10.8) and Jenn Wirth (10.5); while three players average over nine points a game: Katie Campbell (9.8), Jill Townsend (9.8) and Jessie Loera (9.5). Impressively, eight players on the roster average at least seven points per game.

LET'S GET DEFENSIVE

Statistically speaking, through the first 11 games the Bulldogs are the best defensive team in the WCC. Gonzaga leads the league in scoring defense, limiting opponents to just 56.5 points per game. That mark also ranks 47th nationally. GU ranks second in turnover margin, forcing an average of 17.2 turnovers per game for a +2.9 turnover margin, and it ranks second in blocked shots with 3.7 per contest. The Bulldogs also rank second in rebounding defense, limiting opponents to just 33.7 rebounds per game.

BEST START IN PROGRAM HISTORY

Gonzaga's 9-1 start is the best 10-game start in program history. Previously, the Bulldogs' best 10-game start was 8-2, a record they had posted on eight different occasions, most recently in 2016-17.

PAC-12 DOMINANCE

With the Zags' win over Washington State on Dec. 9, the Bulldogs have won two-straight games over Pac-12 opponents. It's only the fourth time in program history that Gonzaga has defeated two or more Pac-12 opponents in a single season. Previously, the Bulldogs accomplished the same feat during the 2016-17 season (def. Stanford 68-63; def. Washington State 79-61), the 2010-11 season (def. WSU 67-65; def. WSU 80-62, def. UCLA 89-75) and in 2009-10 (def. USC 70-58; def.

Washington 81-52). GU's back-to-back Pac-12 wins marks the second time in program history the Bulldogs have defeated two-straight Pac-12 opponents. The Zags also accomplished the feat during the 2009-10 season defeating then Pac-10 opponents USC and Washington in back-to-back games on Nov. 19 and Nov. 22. Both of those games were also played at home.

SHARING THE SCORING RESPONSIBILITY

Through the first 10 games, Gonzaga has done well to share the scoring responsibility. In all but two games, the Bulldogs have finished with at least two players in double-figures and have twice finished with five players in double-figures: against Western Kentucky (Nov. 24) and against Washington State (Dec. 9). No one has scored more than 20 points in a single contest, and only one player averages double-figures (Zykeria Rice, 11.1). Only Rice has been the lone leading scoring in consecutive games (vs. Notre Dame, 11/22; vs. Rutgers, 11/23); otherwise a new player has claimed top scoring honors every game.

OWNING THE BOARDS

Since losing the rebounding battle in two of their first five games, including a lopsided 50-33 advantage in favor of Notre Dame, Gonzaga has dominated the glass. As of Dec. 10, nn their previous five games, the Bulldogs have posted a +11.0 rebounding margin, winning all five games on the glass. Gonzaga has limited four of its last five opponents to under 30 rebounds, including a season-low 24 against Stanford on Dec. 2.

BULLDOGS KEEP CLIMBING THE POLLS

With its second-straight Pac-12 win, Gonzaga moved up three spots to No. 21 in the AP Poll (Dec. 10). The Zags also jumped in the USA Today Coaches Poll, moving up one spot to No. 21. It's the highest ranking for the Zags in both polls since March 2014. Gonzaga was ranked No. 18/16 March 11-23.

ZAGS CRACK AP TOP 25

Gonzaga found itself inside the Associated Press Top 25 for the first time since 2016 as they were voted No. 24 on Dec. 3 in the Week 5 poll. The Bulldogs received 93 votes after defeating then No. 8/7 Stanford 79-73 Sunday afternoon in the McCarthy Athletic Center.

SMITH PICKS UP WCC PLAYER OF THE WEEK

- Chandler Smith picked up her first career WCC Player of the Week honor following her 20-point performance against Stanford on Dec. 2. Eight of her 20 points came in the final 3:56 of the fourth quarter including a clutch jumper and two free throws to seal the win in the final 13 seconds. The Brewster, Wash., native went 6-of-10 from the floor and 8-of-9 from the charity stripe to finish with a game-high 20 points, her second 20-point effort of the season. Smith added three boards, three assists, one block and one steal in the win.

SHOOTING FOR THE WIN

Gonzaga posted its best shooting performance of the season against Stanford, sinking 26-of-48 attempts as a squad to shoot 54.2 percent. It was the first time this season that a team shot over 50 percent against

the Cardinal and only the third time since the 2016-17 season.

TIDBITS FROM THE TOP 10 WIN

Gonzaga's win over then No. 8/7 Stanford marked the:

- 15th win in program history over a ranked opponent
- Fifth win over a Top 10 program in history
- Highest-ranked opponent the Bulldogs have defeated; the previously highest-ranked opponent the Zags had defeated was No. 8/9 Miami on March 19, 2012 in the NCAA Second Round.
- First win over a ranked opponent since Nov. 18, 2016. Coincidentally, that win was also over Stanford; the Bulldogs defeated the No. 11/8 Cardinal 68-63 in Stanford, Calif., marking just the eighth loss at home for Stanford since 2007.

CAPITALIZING AT THE LINE

Following GU's win over No. 8/7 Stanford, the Bulldogs were one of the best free-throw shooting teams in the nation as it ranked 20th overall shooting 77.5 percent from the charity stripe through the first nine games. The Bulldogs ranked second in the WCC in free throw percentage but led the conference in free throws made (117) and ranked second in free throws attempted (151). Laura Stockton leads the WCC with a spectacular 95.2 percent shooting (20-for-21). Following GU's win over Stanford, Stockton had made 10-straight free throws, the longest streak on the squad.

ATTENDANCE CAPACITY AMONG NATION'S BEST

Through nine games, Gonzaga ranks second in the entire nation in attendance capacity at 89.92 percent. The Bulldogs trail only Notre Dame as the Fighting Irish are averaging 93.23 percent capacity this season. UConn (73.28 percent), Iowa State (66.73 percent) and Mississippi State (66.14 percent) round out the top five.

CAMPBELL WITH THE HOT HAND

Through the first nine games, Katie Campbell is shooting 55 percent from long range to lead the Zags. Her average has more than doubled from last season as she finished 12-for-50 from long range to shoot 24 percent in 2017-18. Currently, she's 22-for-40 from long range. Campbell's 55 percent ranks second in the West Coast Conference and 10th in the nation. She also ranks 11th in the WCC in field goal percentage at 50.8.

ZYKERA CONTROLLING THE PAINT

Zykera Rice has been a force for the Zags inside, averaging a team-best 8.4 rebounds per game while leading the Zags with 12.1 points per game. Currently, she ranks fourth in the WCC in rebounds per contest, and she's 18th in the league in scoring. Rice's dominance inside has helped the Zags post a 254-210 points in the paint advantage through eight games.

JENN WIRTH RETURNS

After sitting out the first seven games with a broken finger sustained during the preseason, Jenn Wirth returned to the lineup Wednesday against Colorado State. The sophomore finished with two points and four rebounds in 12 minutes of play.

STARTING STRONG

With a 6-1 record to start this season, the Zags are off to their best start in Lisa Fortier's tenure. The last time the Bulldogs opened the season 6-1 was during the 2013-14 season. That year, Gonzaga posted an 8-1 record before suffering their second loss, a 73-45 loss at No. 6/4 Stanford. That season, Gonzaga collected wins against Big 10 foes Ohio State and Wisconsin in addition to wins over Idaho, UT-Martin, EWU, Colgate, Fairfield and Portland State.

CONSISTENT-Z

- Zykera Rice has been a consistent contributor for the Zags during the Vancouver Showcase. The senior has averaged 16.0 points per game, 6.0 rebounds, 2.0 assists and 2.0 steals through two games.
- Against both Notre Dame and Rutgers, Rice was hot for the Zags. Thursday against the Fighting Irish, the senior netted eight straight points, helping the Bulldogs to an 8-4 lead. Friday against the Scarlet Knights, Rice had seven of GU's first 10 points.

MELODY THE MACHINE

Melody Kempton has been the team workhorse inside the key. The freshman has tallied 25 boards on the season for an even 5.0 per game, and she's been a defensive force on the inside. She leads the Bulldogs with seven blocks in the season; three of those came against Notre Dame.

STOCKTON DISHING IT OUT

- Laura Stockton currently ranks tied for 36th in the nation with 24 total assists on the season. She's recorded at least five assists in three games so far this season and dished out seven assists two consecutive games: at UNLV and vs. Notre Dame.
- Stockton continues to move up the all-time career assists list. Following GU's 81-65 loss to No. 1 Notre Dame, Stockton ranks sixth all-time with 356 career assists.

TLC VANCOUVER SHOWCASE:

- This will be the event's first year, featuring four men's teams and eight women's teams competing Nov. 18-24 in the first regular-season NCAA Division I basketball tournament in Canada.
- The eight-team women's field includes: No. 1 Notre Dame, No. 9 Oregon State, No. 13 South Carolina, (RV) Drake, Rutgers, East Tennessee State, Western Kentucky and Gonzaga.
- The entire tournament will take place at the Vancouver Convention Center, located in the heart of downtown Vancouver.
- LIVE STREAMING: All 12 games will be streamed online for a streaming fee at VanShowcase.com.

RECORD AGAINST No. 1's

- This will be the fourth time in program history that Gonzaga has faced an opponent ranked No. 1. So far, the Zags are 0-3 all-time against No. 1's, starting with a 79-65 loss to then No. 2/1 Tennessee on Nov. 25, 2005 at a neutral site game in the U.S. Virgin Islands as part of the Paradise Jam tournament. The Bulldogs also fell 96-73 to No. 1 Tennessee on Dec. 16, 2007 in Knoxville. The last time the Zags face a No. 1 was against Stanford on Dec. 2, 2012. The Bulldogs fell to

the Cardinal 69-41 in Spokane.

REBOUNDING IS KEY

Head women's basketball coach Lisa Fortier has challenged her team to improve its rebounding. At UNLV, a team that boasts eight players six-foot or taller, Gonzaga won the rebounding battle 37-36, and Fortier said she thought it was a much better effort from her team.

"When you watch the film [vs. UNLV], a lot of times we have people double-teaming rebounders, trying to make sure that even if they don't get the rebound, someone on our team will tip it to themselves or go clean it up," Fortier said. "That's an area that we need to continue to work on, especially as we play this week; there are going to be bigger teams with more post players and more physicality. That was an area of growth that we needed to make. I thought we did a nice job there; we only beat them by one on the glass, but I thought a much better effort."

Through Nov. 19, Gonzaga has four players rank among the top 16 in rebounding in the WCC, with three players in the top 10. Zykera Rice leads the rebounding effort with 8.3 per game (4th in WCC), while Chandler Smith and Jill Townsend are tied for 10th with an even 6.0 per game. Melody Kempton rounds out the top 16 with 5.3 rebounds per contest. As a squad, the Zags rank second in the WCC in rebounding offense with 40.2 boards per contest; in addition, they also rank second in offensive rebounds with 13.8 per game.

TURNOVER CHAIN

So far this season, the Zags have been relentless in forcing turnovers. Between their full-court press to their scrappy half-court defense, the Bulldogs collect an average of 12.7 steals per game while forcing an average of 21.33 turnovers per game. Through three games, the Zags lead the WCC in turnover margin (+7.7) and rank fourth in steals.

DOWN LOW DOMINANCE

Gonzaga has been nearly unstoppable inside, outscoring its first three opponents 102-62 in the key. That's an average of 13.3 points per game. The Bulldogs have also asserted themselves on the glass, posting a +3.7 rebounding margin through the first three games.

BENCHIN' IT

The Bulldogs have been seeing a lot of production from their bench so far this season. GU's bench has outscored its opponent every game by an average of 21.6 points per game. Jill Townsend and Katie Campbell have both been sparks off the bench for the Zags, averaging 11.0 and 10.3 points per game, respectively, while Melody Kempton has shown her ability inside with 4.3 rebounds per game and 1.0 blocks per contest. Louise Forsyth has showcased her range for the Zags, coming in against Eastern Washington to hit a deep baseline three to spark a second-half run. She's shooting 42 percent from the floor so far this season.

TOWNSEND ON THE RISE:

- Sophomore Jill Townsend has had a strong start to her sophomore campaign. The Okanogan, Wash., native is

GAME NOTES CONTINUED

averaging 12.0 points per game through two contests and 8.0 rebounds; both marks are above her previous career-highs of 11 points and six rebounds. Against Eastern Washington, Townsend came off the bench to post a double-double of 10 points and 10 rebounds. She's the first Zag to come off the bench and post a double-double since teammate Zykeria Rice in 2016. Rice came off the bench to score 16 points and grab 10 rebounds in GU's 102-38 win over UC Irvine on Nov. 13, 2016.

DEFENSIVE PROWESS:

The Bulldogs are setting the defensive standard early. The Zags lead the West Coast Conference and rank 27th in the nation in steals with 28, and the Bulldogs rank second in the conference in field goal percentage defense at 32.5. GU also ranks second in the WCC in turnovers forced with 22.5 per contest. Both Katie Campbell and Chandler Smith lead the squad and share the WCC lead with seven steals each, good for 3.5 per contest. Defense was key in Gonzaga's recent 63-51 road win at Eastern Washington as the Zags forced 24 turnovers including three in the final 3:40 to seal the win.

SHARING THE RESPONSIBILITY:

Though Gonzaga has just one official game under its belt this season, it has become clear early that the Bulldogs are embracing the idea of team basketball. Four Zags scored in double-figures in their season-opener: Jill Townsend (14); Katie Campbell (13); Laura Stockton (13) and Zykeria Rice (11). The Bulldogs are also sharing the rebounding effort as every Zag that played at least 15 minutes had two boards. Rice led the rebounding effort with nine while Chandler Smith and Townsend each has six. Another shared stat is minutes played; no Zag saw the floor more than 29 minutes on Wednesday, with Jessie Loera logging a team-high 29. Having a deep bench and solid reserves will help the Zags maintain their endurance throughout the season.

NATIONALLY RANKED ATTENDANCE:

- Following Gonzaga's home-opener against Montana on Nov. 7 that saw 5,472 strong in the McCarthy Athletic Center, the Zags rank sixth nationally in average attendance.

1. Pittsburgh	ACC	9,657
2. Baylor	Big 12	9,444
3. Montana State	Big Sky	6,772
4. Mississippi State	SEC	6,373
5. Purdue	Big Ten	6,185
6. Gonzaga	WCC	5,472

HOME OPENERS: A LOOK BACK

- The Zags are 27-5 all-time in regular-season home openers and have won the last 13.
- The Bulldogs last loss in a home opener was in 2003, a 73-57 loss to Oregon. The Zags have never lost a home opener inside the McCarthy Athletic Center.
- The Zags have never faced Montana in their regular-season home opener.

EXHIBITION EXCITEMENT

After over four weeks of practice facing just each

other, the Bulldogs finally had a chance to stretch their legs against an opponent other than themselves in an actual game environment. In front of 5,370 strong, the Bulldogs rolled Carroll 86-43 on Nov. 2 in the McCarthy Athletic Center. Gonzaga shot 55.7 percent from the floor and a staggering 46.7 percent from long range while scoring nearly at will inside with a 32-18 advantage in the paint. The Zags were relentless on defense, forcing 21 turnovers with 13 steals for a 35-9 advantage in points off turnovers. Five Zags finished in double-figures led by Chandler Smith's 23. Katie Campbell finished with 13, Jill Townsend added 12 and Zykeria Rice chipped in 11. Freshman Melody Kempton nearly finished with a double-double in her first appearance as a Zag as she finished with 10 points and a game-high nine rebounds, five of which were offensive.

BULLDOGS PICKED TO REPEAT AS WCC CHAMPS:

For the sixth straight season, Gonzaga was selected as the favorite to win the 2018-19 WCC crown. The Zags, which have won 13 of the last 14 regular-season WCC title and set the WCC record with 17 conference wins a season ago, received seven of 10 first place votes for 79 points. Saint Mary's was selected second while BYU rounded out the top three in third place.

TRIO OF ZAGS NAMED PRESEASON ALL-WCC:

- Seniors Chandler Smith, Zykeria Rice and Laura Stockton were all named Preseason All-WCC. Smith and Rice earned the honor for the first time while Stockton picked up her second-straight Preseason All-WCC nod.
- Smith appeared and started in all 33 games for the Zags a season ago, averaging 9.4 points per game to rank third on the team. She also led GU and was fifth in the league with 1.9 steals per game. Smith earned Second Team All-WCC last season.
- Rice is the top returning scorer for the Zags as she averaged 11.7 points a season ago (second on team, 17th in WCC). Rice also led the squad in field goal percentage at 49.7 percent. Rice was also named Second Team All-WCC in addition to being named WCC All-Tournament.
- Stockton has led the Bulldogs in assists each of the last two seasons and ranked eighth in the WCC in assists last year with 3.8 per game. She also carried a 1.6 assist-to-turnover ratio last season, good for seventh in the conference.

A LOOK AT THE SCHEDULE:

- The Bulldogs' upcoming slate features two NCAA tournament teams, five WNIT teams, seven opponents with at least 20 wins and a 30+ win opponent. Gonzaga will be tested early with a matchup against defending national champions Notre Dame and a rematch against the Stanford Cardinal who defeated the Zags 82-68 in the NCAA First Round last season.
- Nonconference foes UNLV, Missouri State, Colorado State and Idaho all advanced to the WNIT, as did WCC opponent Saint Mary's.

A LOOK AT THE ROSTER:

- The Zags return three starters and eight letter winners from last season's squad that finished 27-6 overall with a conference record 17-1 mark in WCC play. Rice, Smith and Stockton return as starters for the Bulldogs, and all three were named Preseason All-WCC.

- The Bulldogs also add 6-5 transfer Anamaria Virjoghe and freshmen Melody Kempton and Kylee Griffen. Virjoghe will redshirt the 2018-19 season per NCAA transfer rules.

- Gonzaga features a sizeable frontcourt with Jenn and LeeAnne Wirth, each at 6-3, who return for their sophomore campaigns. Rice, who stands at 6-1, will look to replace some of the lost scoring power from Jill Barta; Barta elected to forego her senior season and was selected as the 32nd overall pick in the 2018 WNBA Draft.

- There are seven players on the current roster that appeared in 30 or more games a season ago; Rice (33), Smith (33), Loera (32), Townsend (32), Wirth, J. (32), Wirth, L. (30) and Stockton (29).

MCCARTHEY'S NEW SECURITY MEASURES

- In order to provide its fans with the safest venue environment, Gonzaga Athletics is implementing additional security measures at events at the McCarthy Athletic Center beginning this upcoming season.

- Security measures include metal detection technology at all entrances and a clear bag policy, which both keep safety and security a priority. These security measures will be in effect beginning with Kraziness in the Kennel.

- With the entry process possibly increasing the time it takes to enter the building, Gonzaga Athletics encourages all fans to arrive early or utilize the designated express lanes that are intended for patrons that don't have any bags or large metals items such as cameras or tablets.

- People entering the arena will be screened via walk-through metal detectors or by utilization of hand wands when needed.

HISTORY

Seasons of Basketball.....38
 First Season.....1980
 All-time Record 548-397 (.579)
 NCAA Tournament Appearances 10
 Record.....10-10
 Last (Round) 2018 (First Round)
 Consecutive 2 (2017-present)
 NCAA Sweet 16 Appearances (last).....4 (2015)
 NCAA Elite Eight Appearances (last)1 (2011)
 NIT Appearances (last).....5 (2016)
 WCC Championships (last) 14 (2018)
 WCC Tournament titles (last)8 (2018)
 Highest Ranking in Program History: No. 14 (3/14/10)

TEAM INFORMATION

2017-18 Record27-6
 Home.....12-2
 Away.....11-2
 Neutral4-2
 WCC Record17-1
 Home.....8-1
 Away.....9-0
 Finish.....First
 Tournament Champions
 NCAA Tournament.....0-1 (First Round)
 Associated Press Final Ranking.....Receiving Votes
 USA Today Final Ranking.....Not Ranked
 Starters Returning/Lost.....3/2
 Letterwinners Returning/Lost11/3

COACHES AND STAFF

Head CoachLisa Fortier
 Alma Mater.....Cal State-Monterey Bay '04
 Record at Gonzaga.....114-36 (4)
 Overall Record Same
 Season on staffFifth
 Assistant Coach.....Jordan Green
 Alma Mater.....George Fox '01
 Season on staffFifth
 Assistant Coach.....Stacy Clinesmith
 Alma Mater.....UC Santa Barbara '00
 Season on staffFifth
 Assistant Coach.....Craig Fortier
 Alma Mater.....Cal State-Monterey Bay '03
 Season on staffFifth
 Director of Operations.....Shannon Donegan
 Alma Mater.....Temple '12
 Season on staffSecond
 Coordinator of VideoA'Jae Foster
 Alma Mater.....Humbolt State '17
 Season on staffFirst
 Coordinator of AnalyticsTed Kim
 Alma Mater.....Illinois '15
 Season on staffFirst as COA; Third overall
 Strength and Conditioning CoachTravis Knight
 Alma Mater.....Gonzaga '00
 Season on staff15th
 Athletic Trainer.....Kendall Gallop
 Alma Mater.....Oregon State '12
 Season on staffSecond
 Academic Support Services.....Amanda Flores
 Administrative Assistant.....Sonja Steele
 Basketball Office Phone.....(509) 313-4201

2018-19 GONZAGA WOMEN'S BASKETBALL ROSTER

NUMERICAL ROSTER

No.	Name	Pos.	Ht.	Yr.	Hometown/High School/College
00	Zykera Rice	F	6-1	Sr.	Tacoma, WA / Clover Park
1	Anamaria Virjoghe	F	6-5	So.	Targoviste, Romania / Voievodul Mercea / Northwest Christian
3	Jenn Wirth	F	6-3	So.	Chandler, AZ / Seton Catholic
4	LeeAnne Wirth	F	6-3	So.	Chandler, AZ / Seton Catholic
5	Louise Forsyth	G	6-0	So.	Langley, BC / Brookwood Secondary
10	Gillian Barfield	F	6-1	So.	Phoenix, AZ / Phoenix Country Day School
11	Laura Stockton	G	5-8	Sr.	Spokane, WA / Gonzaga Prep
15	Jessie Loera	G	5-6	Jr.	Moses Lake, WA / Moses Lake
24	Katie Campbell	G	5-10	Jr.	Oxnard, CA / Oaks Christian / Ventura College
30	Chandler Smith	G	6-0	R-Sr.	Brewster, WA / Brewster / Nebraska
32	Jill Townsend	G	5-11	So.	Okanogan, WA / Okanogan
33	Melody Kempton	F	6-1	Fr.	Post Falls, Idaho / Post Falls
44	Kylee Griffen	G	6-2	Fr.	Marysville, Wash. / Lake Stevens

ALPHABETICAL ROSTER

No.	Name	Pos.	Ht.	Wt.	Yr.	Exp.	Hometown/High School/College
10	Gillian Barfield	F	6-1	So.	Phoenix, AZ / Phoenix Country Day School		
24	Katie Campbell	G	5-10	Jr.	Oxnard, CA / Oaks Christian / Ventura College		
5	Louise Forsyth	G	6-0	So.	Langley, BC / Brookwood Secondary		
44	Kylee Griffen	G	6-2	Fr.	Marysville, Wash. / Lake Stevens		
33	Melody Kempton	F	6-1	Fr.	Post Falls, Idaho / Post Falls		
15	Jessie Loera	G	5-6	Jr.	Moses Lake, WA / Moses Lake		
00	Zykera Rice	F	6-1	Sr.	Tacoma, WA / Clover Park		
30	Chandler Smith	G	6-0	R-Sr.	Brewster, WA / Brewster / Nebraska		
11	Laura Stockton	G	5-8	Sr.	Spokane, WA / Gonzaga Prep		
32	Jill Townsend	G	5-11	So.	Okanogan, WA / Okanogan		
1	Anamaria Virjoghe	F	6-5	So.	Targoviste, Romania / Voievodul Mercea / Northwest Christian		
3	Jenn Wirth	F	6-3	So.	Chandler, AZ / Seton Catholic		
4	LeeAnne Wirth	F	6-3	So.	Chandler, AZ / Seton Catholic		

COACHING STAFF

Head Coach: Lisa Fortier (Fifth Season) Cal State-Monterey Bay '04
 Assistant Coach: Jordan Green (Fifth Season) George Fox '01
 Assistant Coach: Stacy Clinesmith (Fifth Season) UC Santa Barbara '00
 Assistant Coach: Craig Fortier (Fifth Season) Cal State-Monterey Bay '03
 Director of Operations: Shannon Donegan (Second Season) Temple '12
 Coordinator of Video: A'Jae Foster (First Season) Humbolt State '17
 Athletic Trainer: Kendall Gallop (Second Season) Oregon State '12
 Strength and Conditioning Coach: Travis Knight (15th Season) Gonzaga '00

PRONUNCIATION GUIDE

Zykera Rice – Zigh-keer-ah Rice
 Anamaria Virjoghe – Awn-ah Veer-joe-gay
 Louise Forsyth – Lou-weese Fore-sigh-th
 Jessie Loera – Jessie Low-ett-a
 Jill Townsend – Town-Send
 Lisa Fortier – Lisa For-tee-ay
 Shannon Donegan – Done-uh-gon (like again)
 A'Jae Foster – Ah-jay

ROSTER BREAKDOWN BY LOCATION

Washington (6): Loera, Rice, Smith, Stockton, Townsend, Griffen
 California (1): Campbell
 British Columbia (1): Forsyth
 Arizona (3): Barfield, Wirth, Wirth
 Idaho (1): Kempton
 Romania (1): Virjoghe

ROSTER BREAKDOWN BY CLASS

Senior (3): Rice, Smith, Stockton
 Junior (2): Campbell, Loera
 Sophomore (6): Barfield, Forsyth, Townsend, Wirth, Wirth, Virjoghe
 Freshman (2): Griffen, Kempton

HEAD COACH - LISA FORTIER

FORTIER YEAR-BY-YEAR

YEAR	OVERALL		CONFERENCE	
	W	L	W	L
2014-15	26	8	16	2
2015-16	19	14	10	8
2016-17	26	7	14	4
2017-18	27	6	17	1
2018-19	16	1	5	0
TOTAL	114	36	62	15

After spending much of the last decade as a member of the Gonzaga University women's basketball staff, including seven as an assistant, Lisa Fortier was named the program's head coach on April 14, 2014, and has rattled off a series of firsts in her first four seasons at the helm.

In 2017-18, Fortier took a young group with just one senior on the court, and posted the winningest season in her tenure at 27-6, the program's 10th 25-win season in 11 years. The Zags went 17-1 in conference play, the first WCC team ever to do that, claiming the regular-season crown. Fortier was named WCC Coach of the Year for the third time in her first four years, the first coach to do that in conference history. GU won the WCC Tournament as well, advancing to the NCAA Tournament for the 10th time, the third time in coach Fortier's tenure, also the first coach to do that in program history. WNBA Draft pick Jill Barta became only the third Zag to be named First Team All-WCC three times in her first three seasons.

In her third season, 2016-17, Fortier's Zags swept the West Coast Conference regular-season and tournament championships, becoming the fastest coach in program history to 50 wins en route. At 26-7, they advanced to the NCAA Tournament for the eighth time in nine years, and ninth time overall. Her 2016-17 squad set program records in three-pointers made with 224 and free throw percentage at 77.4 percent, along with breaking the single-game made three-pointers mark three times, finally settling at 17. Barta became only the second sophomore in the Division I era to score 1000 points at GU.

In her first season as a head coach in 2014-15, Fortier oversaw one of the nation's more efficient offenses. The Bulldogs outscored opponents by 10.0 points per game. As a team, the Zags broke seven team records, including a program-best 77.4 percent from the free-throw line that season, which was also fourth-best in the country. GU made 534 free-throws and 211 three-pointers that season, both new program records.

Fortier was the 2015 recipient of the WBCA Division I Rookie Coach of the Year Award. Fortier had the best first season any head coach in Gonzaga women's basketball history has ever had. Her 26 wins and 76.5 winning percentage were both top of the list among first year finishes for any GU women's basketball coach.



Fortier led Gonzaga to a 26-8 finish and its seventh-straight NCAA Tournament appearance. GU made its fourth appearance in the Sweet 16, after a pair of upsets in the first and second rounds as an 11-seed.

Fortier was named the West Coast Conference co-Coach of the Year after guiding the Zags to their 11th straight conference regular season title. During the season, Gonzaga won 16 straight games, the fifth-longest win streak in program history.

Gonzaga advanced to the postseason for the 10th consecutive year during Fortier's second season. The Zags ended their schedule in the second round of the Women's National Invitation Tournament. Jill Barta became the first freshman to be named First Team All-West Coast Conference in eight years.

Fortier first came to Gonzaga in 2004, spending two years as the coordinator of basketball operations. She then spent one season as an assistant coach at the University of Northern Colorado before returning to GU in 2007.

FORTIER VERSUS ...

(Alphabetical Order)

School	W	L	School	W	L
Air Force	1	0	Oregon State	1	0
American	0	1	Pacific*	7	3
Belmont	0	1	Pepperdine*	9	1
Brigham Young*	6	3	Portland*	9	0
Colgate	2	0	Portland State	2	0
Colorado State*	1	1	Presbyterian	1	0
Dayton	2	0	Rutgers*	1	0
DePaul	0	1	Saint Francis	1	0
Eastern Washington*	5	0	Saint Mary's*	7	3
Florida State	0	1	San Diego*	6	3
George Washington	1	0	San Francisco*	8	2
Grand Canyon	1	0	Santa Clara*	7	2
Idaho*	1	0	Southern Utah	1	0
Idaho State*	2	0	Southern California	0	1
Iowa	0	1	Stanford*	2	3
Kent State	1	0	Tennessee	0	1
Loyola Marymount*	10	0	UC Irvine	1	0
Michigan	0	1	UC Riverside	1	0
Missouri State*	1	0	UNLV*	1	1
Montana*	3	0	Utah	0	1
Montana State	2	0	Washington State*	3	2
Nicholls State	1	0	West Virginia	1	0
Northwestern	1	1	Western Illinois	1	0
North Carolina	0	1	Western Kentucky*	1	0
Notre Dame*	0	1	Winthrop	1	0
Oklahoma	0	1	Wyoming	2	0

* 2018-19 Opponents

In her seven years as a Gonzaga assistant, the Bulldogs produced an overall record of 196-43. The Zags dominated the West Coast Conference during that span, compiling a 98-8 mark to go with seven consecutive WCC regular-season championships and five WCC Tournament titles.

After a second-round appearance in the WNIT in Fortier's first season as an assistant, the Zags qualified for the NCAA Tournament the next six years, which included a stretch of three straight Sweet Sixteens from 2010-12. The highlight was an Elite Eight run in 2011, in which the Bulldogs upset three higher-seeded teams.

In addition to serving as Gonzaga's recruiting coordinator, Fortier has been responsible for coordinating GU's defense. She also spent time coaching Gonzaga's guards. She has mentored two WNBA draftees in Courtney Vandersloot and Katelan Redmon as well as Haiden Palmer, a 2014 draft hopeful. She also coached Taelor Karr, the 2012-13 WCC Player of the Year.

A native of Grass Valley, Calif., Fortier played collegiate basketball at Butte (Calif.) Community College before transferring to Cal State Monterey Bay. At CSUMB, she earned Honorable Mention All-Cal-Pac Conference honors as a junior and was an NAIA Academic All-American in 2003. She also earned the 2004 CSUMB Female Scholar Athlete of the Year.

Fortier graduated Magna Cum Laude from CSUMB in 2004 with a bachelor's degree in human communications. Fortier earned her master's degree in sport and athletic administration from Gonzaga in 2006.

Fortier, who spent two years as the Assistant Coaches Representative on the WBCA Board of Directors, is married to Craig Fortier, who joined the Gonzaga staff as an assistant coach in May of 2014, after previously serving as the associate head men's basketball coach at Eastern Washington University. They welcomed their first son, Marcus, in 2010. Their second son, Calvin, was born in 2012, and they welcomed a daughter, Quincy, in July, 2014.

ASSISTANT COACH - JORDAN GREEN

Jordan Green was hired as an assistant women's basketball coach in April of 2014. Green was the first member of Lisa Fortier's new staff.



In his first season with the Zags, Green helped guide GU to its fourth Sweet 16 appearance and 11th straight WCC title. He was instrumental in a Gonzaga defense that allowed only 61.8 points per game, second in the WCC. In 2016-17 the Zags returned to the NCAA Tournament and swept the WCC Regular-Season and Tournament Championships, only allowing 58.3 points per game, first in the conference. The Bulldogs were dominant on defense once again in 2017-18, finishing second in the conference allowing 59.5 points per game and collecting 17 wins when holding their opponent under 59 points.

The native of Cashmere, Wash., closed out his third season on the Idaho coaching staff in 2013-14 and first as the associate head coach. The Vandals had a three-year overall record of 54-45 with Green on the bench, including a 32-16 mark in the Western Athletic Conference (WAC). Idaho also earned NCAA Tournament berths in both 2012-13 and 2013-14 after winning the WAC Tournament Championship.

Prior to his time at Idaho, Green worked at Idaho State from 2004-11. During his tenure, Idaho State won two Big Sky Championships and made a splash in the post-season three times; one NCAA Tournament appearance and two appearances in the WNIT.

Green started his coaching career as an assistant coach for the men's basketball program at Seattle University in 2003-04.

Green played basketball collegiately at George Fox University, where he was a three-time captain and a NAIA All-America Honorable Mention. On the all-time statistical charts at George Fox, he ranked third in steals (253), seventh in points (1,468), and 10th in assists (373).

ASSISTANT COACH - CRAIG FORTIER

Craig Fortier was hired on the Gonzaga University women's basketball staff on May 5, 2014.



Working primarily with the posts, he has tutored 18 all-conference players including 13 first team selections. He coached Jill Barta, who was a three-time First Team All-WCC selection in three seasons, just the third Zag in program history to do that. Under his tutelage, Kiara Kudron was also selected First Team All-WCC in 2017 and finished 10th all-time at Gonzaga with 651 career rebounds.

Prior to Gonzaga, Fortier acted as associate head coach of Eastern Washington's men's basketball program, and he helped direct the Eagles' defense, which, in 2013-14, finished in the top three in the Big Sky in three different categories, including blocked shots (1st; 4.3), field goal percentage defense (2nd; 44.6) and three-point field goal percentage defense (3rd; 34.5). The Eagles also had the top three seasons in school history in lowest turnovers per game, averaging 12.0 in 2013-14, 13.4 in 2012-13 and a school-best 11.8 in 2011-12.

He also coached three Big Sky All-Conference players while at Eastern Washington, including the 2011-12 Newcomer of the Year.

Prior to his time at EWU, Fortier spent four seasons as an assistant men's basketball coach at Whitworth University. During his four years with Whitworth, the Pirates won 98 of 116 games for a winning rate of 84.5 percent. He helped develop 10 all-conference performers, three conference Player of the Year winners and one National Player of the Year. All four seasons the Pirates advanced to the NCAA Tournament and won the Northwest Conference Tournament title.

Fortier's experience also includes a one-year stint as an administrative assistant for the men's basketball team at Colorado State University and a one-year stint as the assistant men's basketball coach for his alma mater, Cal State Monterey Bay.

ASSISTANT COACH - STACY CLINESMITH

Stacy Clinesmith, former WNBA veteran and Spokane native, was hired as an assistant women's basketball coach, on May 2, 2014.



In her first season with the Zags, she helped Elle Tinkle and Keani Albanez receive postseason WCC honors.

In 2016-17 she tutored All-WCC selection Laura Stockton at point guard who finished with 144 assists, 10th on the single-season GU lists. The Zags ranked first in the conference in assist/turnover ratio at 1.06. In 2017-18 she oversaw three guards, Stockton, Jessie Loera, and Chandler Smith, who all averaged over 2.7 assists per game and scored at least 6.2 points per game. Smith was Second Team All-WCC and shooting guard Emma Stach was WCC All-Tournament.

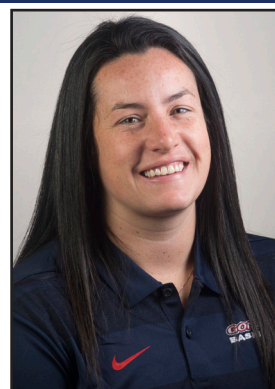
Clinesmith came to Gonzaga after three seasons as an assistant coach at Santa Clara University. During her time with the Broncos, she coached two All-WCC honorees, an All-Freshman team player and five WCC All-Academic honorees.

Clinesmith began her career in the collegiate ranks serving as Oregon State's Director of Basketball Operations in 2008-09 and went on to become the assistant coach at Central Washington University in 2010-11.

Before hitting the coaching ranks, Clinesmith enjoyed a record-setting basketball career. She was tabbed the Washington State 3A Player of the Year while at Mead and went on to become one of the most accomplished guards to ever play at UC Santa Barbara. She finished her college career second in UC Santa Barbara history in assists (647) and fourth in scoring (1,565 points).

DIRECTOR OF OPERATIONS - SHANNON DONEGAN

Shannon Donegan joined Gonzaga in the summer of 2017 and came most recently from fellow WCC-member Saint Mary's College, where she had served as the Gaels' Director of Basketball Operations and Video Coordinator since 2013.



She is originally from Pennsylvania and was the Girls Varsity head coach at Germantown Friends High School in Philadelphia from 2011 to 2013. During that time, she also served as a sports instructor at the YMCA in Berwyn, Pennsylvania.

While at Saint Mary's she handled the day-to-day operations of the program, along with organizing all logistics, including travel, for the team. She communicated with visiting teams and booked times at opposing facilities for practices and shoot rounds. She coordinated special events for the program, including alumni events and hosted boosters. Donegan was active with the team's social media accounts, and created and edited videos for the team's use.

She submitted many of the required reporting documents to the compliance office, managed game film for the Gaels, and assisted with recruiting visits.

Donegan completed her bachelor's in athletic training from Temple University in Philadelphia in 2012 and received her master's in sport management from the University of San Francisco in 2015.

WEST COAST CONFERENCE

Standings	WCC	Pct.	Overall	Pct.	Streak
Gonzaga	4-0	1.000	15-1	0.938	W11
Brigham Young	4-0	1.000	12-3	0.800	W6
Pacific	2-1	0.667	9-4	0.692	L1
Pepperdine	2-2	0.500	8-6	0.571	W1
Loyola Marymount	2-2	0.500	9-7	0.563	L1
Saint Mary's	1-2	0.333	8-6	0.571	W1
Santa Clara	1-2	0.333	8-6	0.571	L2
San Francisco	1-1	0.500	5-8	0.385	W1
San Diego	1-3	0.250	8-7	0.533	L2
Portland	0-4	0.000	8-7	0.533	L4

This week ...

(All times are Pacific)

J. 10	San Diego at Saint Mary's	6:30 p.m.
	San Francisco at Loyola Marymount	7 p.m.
	BYU at Pacific	7 p.m.
	Santa Clara at Pepperdine	7 p.m.
J. 12	Santa Clara at Loyola Marymount	1 p.m.
	San Diego at Pacific	2 p.m.
	BYU at Saint Mary's	2 p.m.
	San Francisco at Pepperdine	2 p.m.
	Portland at Gonzaga	2 p.m.

2018-19 Preseason Poll

1. Gonzaga (7)	79
2. Saint Mary's (2)	73
3. BYU (1)	66
4. Loyola Marymount	52
5. San Diego	49
6. Santa Clara	35
7. Pacific	32
8. San Francisco	31
9. Pepperdine	24
10. Portland	9

(First place votes)

2018-19 All-WCC Preseason Team

Name	Institution
Brenna Chase	BYU
Gabby Green	Loyola Marymount
Sara Hamson	BYU
Megan McKay	Saint Mary's
Myah Pace	San Diego
Sydney Raggio	Saint Mary's
Zykera Rice	Gonzaga
Yasmine Robinson-Bacote	Pepperdine
Chandler Smith	Gonzaga
Laura Stockton	Gonzaga

Player of the Week

Jan. 14 - Paisley Johnson, SO., G, BYU

Paisley guided Brigham Young to a perfect 6-0-league record, scoring at least 20-plus points in both road wins this week. At Pacific, she tied for game highs with 24 points along with three assists, two rebounds and one steal in 38 minutes. She went 2-of-4 from 3-point range and 6-of-8 from the free throw line. In the one-point, 74-73, win at Saint Mary's, she recorded a career- and game-high 25 points along with two rebounds, two steals and one assist in 36 minutes and shot over 60 percent from the field, behind the arc and from the charity stripe.

For the week, Johnson averaged 24.5 points and 2.0 rebounds a game. She shot 63 percent from the field, 60 percent from the 3-point line and 69.2 percent

Also Nominated: *Laura Stockton, Gonzaga;* Ameela Li, Pacific; Malia Bambrick, Pepperdine; Megan McKay, Saint Mary's; Tia Hay, Santa Clara

The Last Time Out

GONZAGA 97, Portland 71

Game 17 * Jan. 12 * Spokane, Wash. * McCarthy Athletic Center

SPOKANE, Wash. -- The No. 14/15 Gonzaga women's basketball team defeated visiting Portland 97-71 Saturday afternoon at the McCarthy Athletic Center.

Gonzaga (16-1, 5-0 WCC) was led by Zykera Rice with a career-high 28 points off 11-of-13 from the floor to go along with seven boards and three assists. Laura Stockton added a career-high of her own with 19 points to go along with six boards and six assist to move into fourth all-time in program history for career assists with 401. Jill Townsend and Melody Kempton rounded out the double-figure scoring with 11 and 10, respectively.

The Bulldogs dominated Portland (8-8, 0-5 WCC) inside with a 42-26 advantage in the paint while owning the glass with a season-high 58 rebounds including 22 offensive boards. The Zags finished with 23 second-chance points while forcing 16 turnovers on the Pilots.

Gonzaga opened the first quarter on a tear, shooting 65 percent from the floor for 29 points. The Zags had 10 assists on 13 field goals in the opening period; LeeAnne Wirth led the Zags with eight points off a perfect 4-of-4 from the floor. The Bulldogs held the Pilots to 31.3 percent shooting in the opening period and outscored them 10-4 in the paint while forcing seven turnovers to lead 29-13.

"We did get the first quarter that we wanted; we wanted to come out with lots of energy," head women's basketball coach Lisa Fortier said. "[Portland] is an energetic team and they can score in a variety of different ways...So we wanted to set the tone early."

The Bulldogs opened the second on a 4-0 run to extend their lead to 18 (33-15), but Portland battle back, capping a 10-4 run to cut GU's lead to 12 (37-25) with 4:29 to go. The Zags closed the period with a 12-7 run, including a buzzer-beating jumper from Townsend, to lead 49-32 heading into the break.

In the second half, the Bulldogs outscored Portland 48-40, shooting 48.7 from the floor. Gonzaga led by as many as 28 in the fourth quarter and nearly broke the 100-point barrier, finishing with a final 97-72 win.

Portland was led by Jayce Gorzeman and Julie Spencer with 15 points each while Darian Slaga and Haylee Andrews added 14 and 10 points, respectively.

Week 11 AP Top 25

(Jan. 14)		PTS	PVS	REC
1	Notre Dame***	736	1	16-1
T2	Baylor	706	4	13-1
T2	Connecticut	706	3	14-1
4	Louisville	652	2	15-1
5	Oregon	621	5	15-1
6	Stanford***	615	6	14-1
7	Mississippi State	571	7	15-1
8	NC State	542	8	17-0
9	Maryland	505	9	15-1
10	Oregon State	482	10	14-2
11	Texas	452	11	14-2
12	Syracuse	427	12	14-2
13	GONZAGA	369	14	16-1
14	Marquette	352	15	14-3
15	South Carolina	273	21	12-4
16	Kentucky	243	16	15-3
17	Michigan State	217	23	12-3
18	Iowa State	202	20	13-3
19	Arizona State	192	19	12-4
T20	Tennessee	394	13	12-4
T20	Rutgers	163	NR	13-3
22	Iowa	146	17	11-4
23	Minnesota	76	18	12-3
24	DePaul	57	NR	12-5
25	Indiana	56	25	15-2

Also receiving votes: Florida State (54); Utah (36); Butler (20); Texas A&M (20); Missouri (19); California (17); Georgia (17); Central Michigan (12); Drake (9); South Dakota (7); Auburn (4); UCF (4); Purdue (3); Clemson (3); Arizona (1)

*** 2018-19 GU Opponent

Records when ...

2018-19

Overall	16-1
At McCarthy Athletic Center	9-0
On the road	5-0
At a neutral site	2-1
vs. West Coast Conference:	5-0
vs. WCC home game	3-0
vs. WCC away game	2-0
After a win	14-1
After a loss	1-0
Ahead at the half:	14-0
Behind at the half:	1-1
Tied at the half:	1-0
Ahead at start of 4th quarter	16-0
Trailing at start of 4th quarter	0-1
Tied at the start of 4th quarter	0-0
In overtime	0-0
More rebounds than opponent	14-0
Fewer rebounds than opponent	2-1
Equal rebounds	0-0
More turnovers than opponent	3-0
Fewer turnovers than opponent	12-1
Equal turnovers	1-0
More fouls than opponent	5-0
Fewer fouls than opponent	9-1
Equal fouls	2-0
Shoots 50 percent or higher	5-0
Opponent shoots 50 percent or higher	0-0
Shoots less than 50 percent	11-1
Opponent shoots less than 50 percent	16-1
GU shoots better than opponent	16-0
Opponent shoots better than GU	0-1
Equal shooting percentage	0-0
GU has more free throw attempts	11-0
Opponent has more free throw attempts	4-1
Equal free throw attempts	1-0
GU bench outscores opponent bench	15-1
Opponent bench outscores GU bench	1-0
Equal bench contribution	0-0
GU makes 10 or more three-pointers	0-0
GU makes 9 or fewer three-pointers	14-1
GU shoots above 75 percent at the line	8-0
GU shoots below 75 percent at the line	8-1
Games decided by 1-5 points	1-0
Games decided by 6-10 points	1-0
Games decided by 11-15 points	4-0
Games decided by 16 or more points	10-1
Scores 50 or less	1-0
Scores between 51-59	1-0
Scores between 60-69	1-1
Scores between 70-79	10-0
Scores between 80-89	2-0
Scores between 90-99	1-0
Scores 100 or more	0-0
Opponent scores 50 or less	2-0
Opponent scores 51-59	9-0
Opponent scores 60-69	3-0
Opponent scores 70-79	2-0
Opponent scores 80-89	0-1
Opponent scores 90-99	0-0
Opponent scores 100 or more	0-0
Vs. Top 25 Team	0-0
Vs. Top 10 Team	1-1
Day game	11-1
Night game	5-0
On Sunday	4-0
On Monday	1-0
On Tuesday	1-0
On Wednesday	2-0
On Thursday	2-1
On Friday	1-0
On Saturday	5-0
In November:	7-1
In December	6-0
In January	3-0
In February	0-0
In March	0-0

THE LAST TIME ...

Scored 100 Points

Zags: 102, UC Irvine, 11/13/16
Opponent: 105, at Stanford, 11/29/09

Scored 95 Points

Zags: 97, Portland, 1/12/19
Opponent: 105, at Stanford, 11/29/09

Scored 90 Points

Zags: 97, Portland, 1/12/19
Opponent: 92, Utah, 3/21/16

Scored 50 Points in a Half

Zags: 55, at Loyola Marymount, 12/29/18
Opponent: 50, Rutgers, 3/17/12

Scored 25 Points in all four Quarters

Zags: 25, 25, 26, 26, UC Irvine, 11/13/16
Opponent: never happened

Scored 30 Points in a Quarter

Zags: 34, 2nd quarter, Pacific, 1/5/18
Opponent: 32, vs. Stanford, 12/2/18

Shot 65 Percent From The Field:

Zags: 67.3, (37-55), Whitworth, 12/15/02
Opponent: none since 1999

Shot 60 Percent From Three:

Zags: 66.7, (6-9), at Washington State, 12/6/17
Opponent: 66.7, (4-6), Pepperdine, 2/6/14

Shot 100 Percent From The Foul Line:

Zags: 16-16, vs. San Diego, 3/6/18
Opponent: 11-11, at Saint Mary's, 1/14/17

Did Not Score 20+ Points in a Half

Zags: 17, vs. Colorado State, 11/28/18
Opponent: 19, Idaho, 12/20/18

Did Not Score 5 Points in a Quarter

Zags: never happened (lowest 5, at Eastern Washington, 11/11/18; vs. Colorado State, 11/28/18)
Opponent: 4, Idaho, 12/20/18

Grabbed 60 Rebounds

Zags: 61, Western Illinois, 12/21/17
Opponent: 64, Saint Mary's, 1/20/00

Grabbed 55 Rebounds

Zags: 58, Portland, 1/12/19
Opponent: 56, at Loyola Marymount, 1/11/03

Made 35 Field Goals

Zags: 41, (41-79), Portland, 1/12/19
Opponent: 36, (36-67), Florida State, 11/26/16

Attempted 80 Field Goals

Zags: 86, (32-86), Western Illinois, 12/21/17
Opponent: 85, (27-85), Virginia, 11/30/08

Attempted 70 Field Goals

Zags: 79, (41-79), Portland, 1/12/19
Opponent: 71, (27-71), Saint Francis, 12/17/17

Made 12 3-Pointers

Zags: 17, (17-25), BYU, 2/2/17
Opponent: 17, (17-30), DePaul, 11/25/17

Made 10 3-Pointers

Zags: 17, (17-25), BYU, 2/2/17
Opponent: 11, (11-22), Stanford, 3/17/18

Attempted 30 3-Pointers

Zags: 34, (15-34), Pepperdine, 1/28/17
Opponent: 33, (7-33), Idaho, 12/20/18

Attempted 25 3-Pointers

Zags: 25, (8-25), BYU, 2/24/18
Opponent: 25, (5-25), Portland, 1/12/19

Made 25 Free Throws

Zags: 25, (25-32), at Loyola Marymount, 2/15/18
Opponent: 27, (27-32), San Francisco, 2/7/15

Made 20 Free Throws

Zags: 20, (20-27), Idaho, 12/20/18
Opponent: 20, (20-27), Portland, 1/12/19

Attempted 45 Free Throws

Zags: 48, (37-48), Idaho State, 11/18/14
Opponent: 49, (34-49), at Oklahoma, 11/14/13

Had 30 Assists

Zags: 31, Idaho, 12/20/12
Opponent: none since 1999

Had 20 Assists

Zags: 27, Portland, 1/12/19
Opponent: 21, at Saint Mary's, 1/14/17

Had 15 Steals

Zags: 17, at Loyola Marymount, 12/29/18
Opponent: 16, San Diego, 1/16/16

Had 10 Blocks

Zags: 10, Wyoming, 12/3/15
Opponent: 11, Oklahoma, 3/18/17

Overcame a 15-Point Halftime Deficit

Zags: 32-47 (81-78), at Loyola Marymount, 2/19/09
Opponent: none since 1999

Overcame a 10-Point Halftime Deficit

Zags: 22-33 (75-65), Dayton, 11/16/14
Opponent: 32-22, BYU, 3/9/15

Had Five Players Score in Double Figures in Same Game

Zags: Zykeria Rice (16), Jenn Wirth (12), Jessie Loera (11), Chandler Smith (11), Katie Campbell (10) vs. Idaho (12/20/18)
Opponent: Arike Ogunbowale (21), Brianna Turner (16), Jessica Shepard (15), Jackie Young (14) and Katlyn Gilber (14) vs. Notre Dame (11/22/18)

Had Two Players record Double-Doubles in Same Game

Zags: Jill Barta (15 pts, 10 rbs) and Chandler Smith (10 rbs, and 10 ast) at Pacific (12/28/17)
Opponent: Hannah Tvrdy (10 pts, 10 rbs) and Annie Brady (11 pts, 15 rbs) at Colorado State (11/13/17)

Did Not Have a Player Score in Double Figures

Zags: vs. Louisville, 11/21/12
Opponent: San Francisco, 1/5/17

Had Two Players Score 20+ Points in Same Game

Zags: Jill Barta (30) and Zykeria Rice (20) Portland State (12/2/17)
Opponent: Alanna Smith (20) and Kiana Williams (21), Stanford (3/17/18)

The Zags Were Ranked:

No. 13 (1/14/19)

Top 25 Associated Press

Top 15 USA Today

No. 15 (2/15/14)

The Zags Beat a Ranked Opponent: AP 8/USA Today 7, vs. Stanford, 69-63, (12/3/18)

PLAYER CAPSULES

#00 ZYKERA RICE

6-1 • SR • F • Tacoma, Wash.

- 2017-2018: Second on team averaging 11.7 points per game ... led team with a 49.7 field goal percentage, sixth in the league and seventh all-time at GU... averaged 5.2 rebounds per game, third on the team.
- 2016-2017: Averaged 4.4 points and 2.9 rebounds per game... second among reserves in rebounds per game and fifth on team...shot 44 percent (48-of-108) from the field, third on the team.
- 2015-2016: Appeared in 17 games ... averaged 6.6 minutes per game... totaled six blocks in the season ... made 60 percent (24-of-40) from the field.
- High School: Attended Clover Park High School in Tacoma, Wash... tabbed second team All-League after her junior season in 2014... averaged 17 points, 13 rebounds, five blocks, three assists, and two steals per game in 2014.

#1 ANAMARIA VIRJOGHE

6-5 • SO • F • Targoviste, Romania

- Northwest Christian: NAIA Honorable Mention All-American, first in school history ... Cascade Collegiate Conference Freshman of the Year and First Team All-CCC ... averaged 15.4 points per game while also averaging 6.5 rebounds and 2.3 blocks per contest.
- Romanian: Attended Voievodul Mercea school in Targoviste, Dambovita, Romania ... member of the Romania U18 National Team...MVP of the u18 National Championships.

#3 JENN WIRTH

6-3 • SO • F • Chandler, Ariz.

- 2017-2018: Played in all 33 games, starting in two of them ... averaged 18.1 minutes per game and 4.6 points per game, both tops among newcomers... shot 48.9 percent from the field, second on the team ... snagged 3.2 rebounds per game, fourth on the team... named to the WCC All-Freshman Team.
- High School: Attended Seton Catholic High School where she was selected 2016-17 AIA First Team All-Section VI, AIA First Team All-Division II... led her team to two Arizona State Championships ... in her career averaged 10.1 points per game, including a career-high 12.5 ppg her senior season.

#4 LEEANNE WIRTH

6-3 • SO • F • Chandler, Ariz.

- 2017-2018: Averaged 13.2 minutes per game, third among non-starters ... scored 4.2 points per game, scoring in double figures three times... averaged 2.8 rebounds per game ... had a career-high six rebounds on two separate occasions.
- High School: Attended Seton Catholic High School where she was selected 2016-17 AIA First Team All-Section VI, AIA First Team All-Division II... led her team to two Arizona State Championships ... averaged 8.2 points per game and 5.9 rebounds per game in her career...was a career 47 percent shooter, shooting 47 percent from three during her junior season.

#5 LOUISE FORSYTH

6-0 • SO • G • Langley, BC

- 2017-2018: Played in 13 games ... scored six points against Portland, going two-of-two from three in the game ... went two-for-two from the line against Pepperdine.
- High School: Attended Brookwood Secondary... in 2017 she was the British Columbia Baden Player of the Year and the Brookwood Female Athlete of the Year... averaged 31 points per game, 14 rebounds per game, and five assists per game.

#10 GILLIAN BARFIELD

6-1 • SO • G • Phoenix, Ariz.

- 2017-2018: Played in seven games ... had assists against Pepperdine and Portland State.
- High School: Attended Phoenix Country Day School... in her hoops career averaged 15.1 points per game, 1.9 assists per game, 10 rebounds per game, two steals per game, and three blocks per game...voted First Team All-State her senior year.

#11 LAURA STOCKTON

5-8 • SR • G • Spokane, Wash.

- 2017-2018: Appeared in 29 games, starting in 28 of them ... led team with 3.8 assists per game, eighth in the WCC... scored 6.6 points per game and shot 41.1 percent from the field ... finished season seventh all-time in assists with 335 ... named Preseason All-WCC.
- 2016-2017: Started in all 33 games ... led the team averaging 4.4 assists per game ... had 144 assists, third in the WCC and 10th all-time in a season at GU... averaged eight points per game... shot 43.4 percent (105-of-242) from the field... All-WCC Honorable Mention ... WCC All-Tournament.
- 2015-2016: Appeared in all 33 games ... averaged 18.2 minutes per game... averaged 6.7 points per game ... scored a season-high 14 points in four games ... her 82 assists in the season were second-most on the team.
- High School: Attended Gonzaga Prep in Spokane, Wash. ... scored 1,308 career points with 414 assists ... helped lead the Bulldogs to the WIAA Class 4A state title in 2014 and 2015 ... was named the Seattle Times State Player of the Year following her senior season.

#15 JESSIE LOERA

5-6 • JR • G • Moses Lake, Wash.

- 2017-2018: Played in all 33 games, starting in seven ... was second in the league and 56th in the nation with a 2.2 assist to turnover ratio... scored 6.2 points per game... had five or more assists 10 times, best on the team.
- 2016-2017: Appeared in 30 games for Gonzaga, averaging 11.3 minutes per game... averaged 2.4 points per game... shot 32.7 percent (17-of-52) from three.
- High School: Had a phenomenal career at Moses Lake High School ... named the Columbia Basin Big Nine Offensive Player of the Year and co-Defensive Player of the Year ... her senior year she was named First Team All-State 4A.

#24 KATIE CAMPBELL

5-10 • JR • G • Oxnard, Calif.

- 2017-2018: Played in 29 games ... made 12 threes ... was six-of-six from the free throw line... Academic All-WCC Honorable Mention.
- Ventura College : Averaged 18.4 points per game in 33 games... shot 41.3 percent from the field in her lone season there, going 32.2 percent from three and 77.3 percent from the line.
- High School: Attended Oaks Christian High School... was a McDonald's All-American nominee and two-time All-Area First Team, All-State... finished as the career leader in steals at school, and second in points and three-pointers made.

#30 CHANDLER SMITH

6-0 • RS SR • G • Brewster, Wash.

- 2017-2018: Appeared and started in all 33 games ... second on the team and 17th in the WCC at 5.7 rebounds per game ... averaged 9.4 points per game... Second Team All-WCC ... First Team Academic All-District ... Academic All-WCC.
- 2016-2017: Appeared in 33 games for Gonzaga ... Averaged 4.7 points per game ... shot 38.5 percent (55-of-143) from the field... named Honorable Mention Academic All-Conference.
- 2015-2016: Redshirted per NCAA transfer rules.
- Nebraska: In 18 total games as a freshman, she averaged 1.8 points, 1.9 rebounds and 0.8 assists in 10.8 minutes per game.
- High School: Named the Washington Class 1A Player of the Year in both 2013 and 2014, while capturing First Team All-State honors for the third consecutive season... Smith powered Brewster to a WIAA Class 1A state championship as a junior in 2013.

#32 JILL TOWNSEND

5-11 • SO • G • Okanogan, Wash.

- 2017-2018: Appeared in all 33 games ... averaged 13.2 minutes per game... scored 4.2 points per game... snagged 1.4 offensive rebounds per game.
- High School: Attended Okanogan High School where she was selected the 2017 Cariboo Trail League 1A Co-MVP, 1A Player of the Year... she averaged 21.8 points per game

in her career, averaging over 20 points per game all four seasons and scored 2097 career points.

#33 MELODY KEMPTON

6-1 • FR • F • Post Falls, Idaho

- High School: Attended Post Falls High School ... was the four-time 5A Inland Empire League Player of the Year leading her team to the state championship her senior year... Post Falls HS all-time leading scorer (1,486) , rebounder (892), and shot blocker (211) ... was named the Gatorade Player of the Year and a McDonald's All-American Game nominee her senior season.

#44 KYLEE GRIFFEN

6-2 • FR • G • Marysville, Wash.

- High School: Attended Lake Stevens High School... had 13 double-doubles and averaged 20.9 points, 10.5 rebounds, and three assists per game her final season ... scored over 1300 career points ... scored 42 points in a game her senior year, a school record.

GONZAGA CAREER AND 2018-19 SEASON HIGHS



SEASON	28, Portland, 1/12/19	Points	28, Portland, 1/12/19	CAREER
	11, vs. Western Kentucky, 11/24/18	Rebounds	13, Western Illinois, 12/21/17	
	5, at Pepperdine, 12/31/18	Assists	5, at Pepperdine, 12/31/18	
	3, vs. Notre Dame, 11/22/18	Steals	3, 3x, last vs. Notre Dame, 11/22/18	
	2, 2x, last at LMU, 12/29/18	Blocks	4, UC Irvine, 11/13/16	
	30, Idaho State, 11/13/18	Minutes	31, at Washington State, 12/6/17	

00 **ZYKERA RICE** SR|F|6-1|Tacoma, Wash.|Clover park



SEASON		Points		CAREER
		Rebounds		
		Assists		
		Steals		
		Blocks		
		Minutes		

1 **ANAMARIA VIRJOGHE** SO|F|6-5|Targoviste, Romania|Northwest Christian



SEASON	16, Pacific 1/5/19	Points	16, Pacific, 1/5/19	CAREER
	10, Idaho, 12/20/18	Rebounds	11, Saint Francis, 12/17/17	
	2, 2x, last Portland, 1/12/19	Assists	3, 3x, last, BYU, 2/24/18	
	1, 5x, last Portland, 1/12/19	Steals	4, Santa Clara, 1/20/18	
	4, Idaho, 12/20/18	Blocks	4, Idaho, 12/20/18	
	24, Pacific, 1/5/19	Minutes	26, Saint Francis, 12/17/17	

3 **JENN WIRTH** SO|F|6-3|Chandler, Ariz.|Seton Catholic



SEASON	12, Washington State, 12/9/18	Points	12, Washington State, 12/9/18	CAREER
	8, 2x, last Pacific, 1/5/19	Rebounds	8, Idaho, 12/20/18	
	3, Idaho, 12/20/18	Assists	3, Idaho, 12/20/18	
	2, 3x, last vs. Rutgers, 11/13/18	Steals	2, 6x, last vs. Rutgers, 11/23/18	
	2, at Eastern Wash., 11/11/18	Blocks	2, 3x, last, at Eastern Wa. 11/11/18	
	30, vs. Western Kentucky, 11/24/18	Minutes	30, vs. Western Kentucky, 11/24/18	

4 **LEEANNE WIRTH** SO|F|6-3|Chandler, Ariz.|Seton Catholic



SEASON	5, 2x, last Idaho, 12/20/18	Points	6, Portland, 1/25/18	CAREER
	2, 2x, last vs. Rutgers, 11/23/18	Rebounds	2, 2x, last at Rutgers, 11/23/18	
		Assists	1, Pepperdine, 1/4/18	
		Steals	3, Idaho, 12/20/18	
		Blocks		
	14, vs. Notre Dame, 11/22/18	Minutes	14, vs. Notre Dame, 11/22/18	

5 **LOUISE FORSYTH** SO|G|6-0|Langley, BC|Brookwood Secondary



SEASON	1, at Pepperdine, 12/31/18	Points	1, at Pepperdine, 12/31/18	CAREER
		Rebounds	1, at Pepperdine, 12/31/18	
		Assists	1, 2x, last, Pepperdine, 1/4/18	
		Steals		
		Blocks		
	3, Montana, 11/7/18	Minutes	3, Montana, 11/7/18	

10 **GILLIAN BARFIELD** SO|F|6-1|Phoenix, Ariz.|Phoenix Country Day School



SEASON	19, Portland 1/12/19	Points	19, Portland, 1/12/19	CAREER
	7, vs. Western Kentucky, 11/24/18	Rebounds	8, at Pepperdine, 2/17/18	
	7, 2x, last vs. Notre Dame, 11/22/18	Assists	9, 2x, last, at Pepperdine, 2/17/18	
	4, 2x, last Saint Mary's, 1/3/19	Steals	5, at Saint Mary's, 1/14/17	
	1, Pacific, 1/5/19	Blocks	2, Pacific, 2/8/18	
	34, 2x, last Stanford, 12/2/18	Minutes	40, Michigan, 11/24/16	

11 **LAURA STOCKTON** SR|G|5-8|Spokane, Wash.|Gonzaga Prep



SEASON	11, 2x, last Idaho, 12/20/18	Points	15, San Francisco, 1/13/18	CAREER
	5, Portland, 1/12/19	Rebounds	5, 5x, last, Portland, 1/12/19	
	9, Portland, 1/12/19	Assists	9, 2x, last, Portland, 1/12/19	
	3, 2x, Saint Mary's, 1/3/19	Steals	5, vs. Kent State, 11/24/17	
	1, at Missouri State, 12/16/18	Blocks	1, 3x, last at Missouri State 12/16/18	
	29, Montana, 11/7/18	Minutes	33, vs. DePaul, 11/25/17	

15 **JESSIE LOERA** JR|G|5-6|Moses Lake, Wash.|Moses Lake

CAREER SUPERLATIVES			
GAMES PLAYED/STARTED	2018-19	CAREER	STREAK
Zykeria Rice	17-17	94-49	21
LeeAnne Wirth	17-17	47-17	17
Laura Stockton	17-17	112-78	37
Chandler Smith	17-17	83-50	50
Katie Campbell	17-9	45-9	9
Jessie Loera	15-8	77-15	0
Jill Townsend	17-0	49-0	0
Jenn Wirth	9-0	42-2	0
Louise Forsyth	14-0	27-0	0
Gillian Barfield	11-0	18-0	0
Melody Kempton	17-0	17-0	0

DOUBLE-DIGIT SCORING			
2018-19	CAREER	STREAK	
Zykeria Rice	15	43	8
Katie Campbell	9	9	0
Laura Stockton	6	30	1
Jill Townsend	8	11	3
Chandler Smith	6	20	0
Jenn Wirth	4	6	0
LeeAnne Wirth	2	2	0
Jessie Loera	2	9	0
Melody Kempton	2	2	1

DOUBLE-DIGIT REBOUNDS			
2018-19	CAREER	STREAK	
Zykeria Rice	3	7	0
Chandler Smith	1	6	0
Jill Townsend	1	1	0
Jenn Wirth	1	2	0
Melody Kempton	1	1	0

20+ POINTS			
2018-19	CAREER	STREAK	
Chandler Smith	3	3	0
Zykeria Rice	2	4	1

8+ REBOUNDS			
2018-19	CAREER	STREAK	
Zykeria Rice	6	14	0
Melody Kempton	2	2	0
Chandler Smith	2	12	0
Jill Townsend	1	1	0
Jenn Wirth	1	3	0
LeeAnne Wirth	2	2	1
Laura Stockton	0	1	0

5+ ASSISTS			
2018-19	CAREER	STREAK	
Laura Stockton	6	35	2
Jessie Loera	5	16	3
Chandler Smith	2	10	0
Jill Townsend	1	1	0
Zykeria Rice	1	1	0

3+ BLOCKS			
2018-19	CAREER	STREAK	
Chandler Smith	1	2	0
Melody Kempton	2	2	0
Zykeria Rice	0	2	0

3+ STEALS			
2018-19	CAREER	STREAK	
Laura Stockton	5	16	1
Chandler Smith	3	19	0
Zykeria Rice	1	3	0
Jessie Loera	1	7	0
Jill Townsend	1	1	0
Jenn Wirth	0	1	0
Katie Campbell	1	1	0



SEASON
24

15, Stanford, 12/2/18
7, 2x, last, Portland, 1/12/19
3, Portland, 1/12/19
4, 2x, last Idaho, 12/20/18
1, 2x, last at LMU, 12/29/18
25, at LMU, 12/29/18

Points 15, Stanford, 12/2/18
Rebounds 7, 2x, last, Portland, 1/12/19
Assists 3, Portland, 1/12/19
Steals 4, 2x, last Idaho, 12/20/18
Blocks 3, Western Illinois, 12/21/17
Minutes 25, at LMU, 12/29/18

CAREER

KATIE CAMPBELL JR|G|5-10|Oxnard, Calif.|Ventura College



SEASON
30

20, 2x, last Stanford, 11/2/18
10, at Missouri State, 12/16/18
6, 2x, last Washington St., 12/9/18
6, at LMU, 12/29/18
3, at Eastern Wash., 11/11/18
34, 2x, last at Missouri St., 12/16/18

Points 20, 2x, last Stanford, 12/2/18
Rebounds 11, 2x, last, Western Illinois, 12/21/17
Assists 10, at Pacific, 12/28/17
Steals 6, at LMU, 12/29/18
Blocks 3, 2x, last, at Eastern Wash., 11/11/18
Minutes 38, at Washington State, 12/6/17

CAREER

CHANDLER SMITH RS-SR|G|6-0|Brewster, Wash.|Nebraska



SEASON
32

15, Stanford, 11/2/18
10, at Eastern Wash., 11/11/18
5, Idaho, 12/20/18
3, Montana, 11/7/18
2, vs. Notre Dame, 11/22/18
25, at Pepperdine, 12/31/18

Points 15, Stanford, 11/2/18
Rebounds 10, at Eastern Wash., 11/11/18
Assists 5, Idaho, 12/20/18
Steals 3, Montana, 11/7/18
Blocks 2, vs. Notre Dame, 11/22/18
Minutes 25, 2x, last at Pepperdine 12/31/18

CAREER

JILL TOWNSEND SO|G|5-11|Okanogan, Wash.|Okanogan



SEASON
33

14, vs. Notre Dame, 11/22/18
10, Washington State, 12/9/18
2, Pacific, 1/5/19
2, 2x, last, Portland, 1/12/19
3, 2x, last at Pepperdine, 12/31/18
22, Montana, 11/7/18

Points 14, vs. Notre Dame, 11/22/18
Rebounds 10, Washington State, 12/9/18
Assists 2, Pacific, 1/5/19
Steals 2, 2x, last, Portland, 1/12/19
Blocks 3, 2x, last at Pepperdine, 12/31/18
Minutes 22, Montana, 11/7/18

CAREER

MELODY KEMPTON FR|F|6-1|Post Falls, Idaho|Post Falls



SEASON
44

Points
Rebounds
Assists
Steals
Blocks
Minutes

CAREER

KYLEE GRIFFEN FR|G|6-2|Marysville, Wash.|Lake Stevens

DOUBLE-DOUBLE TRACKER

	2018-19	CAREER
Zykeria Rice	2	5
12 points/11 rebounds vs. Colorado State (11/28/18)		
10 points/11 rebounds vs. Western Kentucky (11/24/18)		
14 points/13 rebounds vs. Western Illinois (12/21/17)		
Jill Townsend	1	1
10 points/10 rebounds, at Eastern Washington (11/11/18)		

Chandler Smith	1	1
15 points/10 rebounds, at Missouri State (12/16/18)		

Jenn Wirth	1	1
12 points/10 rebounds, Idaho (12/20/18)		

CURRENT STREAKS

Consecutive Made Free Throws (active streak)

Laura Stockton	11
Louise Forsyth	2
Melody Kempton	1
LeeAnne Wirth	1
Jessie Loera	1

Consecutive Games with a Three-Point Field Goal

Katie Campbell	15
Jill Townsend	4
Laura Stockton	1
Louise Forsyth	1

Gonzaga Team High/Low Analysis (as of Jan 15, 2019)
All games

Gonzaga - TEAM GAME HIGHS

POINTS	97	PORTLAND (01/12/19)
	88	PACIFIC (01/05/19)
	88	IDAHO (12/20/18)
	79	at Pepperdine (12/31/18)
	79	STANFORD (12/02/18)
FIELD GOALS MADE	41	PORTLAND (01/12/19)
	34	PACIFIC (01/05/19)
FIELD GOAL ATTEMPTS	79	PORTLAND (01/12/19)
	69	MONTANA (11/07/18)
FIELD GOAL PERCENTAGE	.542 (26-48)	STANFORD (12/02/18)
	.540 (34-63)	PACIFIC (01/05/19)
3 PT FIELD GOALS MADE	8	IDAHO (12/20/18)
	8	STANFORD (12/02/18)
3 PT FG ATTEMPTS	22	COLORADO STATE (11/28/18)
	20	at UNLV (11/17/18)
3 PT FG PERCENTAGE	.615 (8-13)	STANFORD (12/02/18)
	.500 (2-4)	WASHINGTON STATE (12/09/18)
FREE THROWS MADE	21	vs Rutgers (11/23/18)
	20	IDAHO (12/20/18)
FREE THROW ATTEMPTS	27	IDAHO (12/20/18)
	26	vs Rutgers (11/23/18)
FREE THROW PERCENTAGE	.882 (15-17)	IDAHO STATE (11/13/18)
	.864 (19-22)	STANFORD (12/02/18)
REBOUNDS	58	PORTLAND (01/12/19)
	53	IDAHO (12/20/18)
ASSISTS	27	PORTLAND (01/12/19)
	24	PACIFIC (01/05/19)
STEALS	17	at LMU (12/29/18)
	14	IDAHO (12/20/18)
	14	at Eastern Washington (11/11/18)
	14	MONTANA (11/07/18)
BLOCKED SHOTS	7	IDAHO (12/20/18)
	7	vs Notre Dame (11/22/18)
TURNOVERS	23	STANFORD (12/02/18)
	17	at LMU (12/29/18)
FOULS	24	PORTLAND (01/12/19)
	20	at Missouri State (12-16-18)
	20	vs Notre Dame (11/22/18)
	20	IDAHO STATE (11/13/18)

Gonzaga High/Low Analysis (as of Jan 15, 2019)
All games

Opponent - GAME HIGHS

POINTS	81	vs Notre Dame (11/22/18)
	73	STANFORD (12/02/18)
	71	PORTLAND (01/12/19)
	67	at Missouri State (12-16-18)
	65	PACIFIC (01/05/19)
FIELD GOALS MADE	30	vs Notre Dame (11/22/18)
	25	STANFORD (12/02/18)
FIELD GOAL ATTEMPTS	66	vs Notre Dame (11/22/18)
	64	PORTLAND (01/12/19)
FIELD GOAL PERCENTAGE	.455 (30-66)	vs Notre Dame (11/22/18)
	.439 (25-57)	STANFORD (12/02/18)
3 PT FIELD GOALS MADE	9	STANFORD (12/02/18)
	9	at Eastern Washington (11/11/18)
3 PT FG ATTEMPTS	33	IDAHO (12/20/18)
	27	at Eastern Washington (11/11/18)
3 PT FG PERCENTAGE	.409 (9-22)	STANFORD (12/02/18)
	.400 (6-15)	at Pepperdine (12/31/18)
	.400 (4-10)	IDAHO STATE (11/13/18)
FREE THROWS MADE	20	PORTLAND (01/12/19)
	20	at Missouri State (12-16-18)
	20	vs Notre Dame (11/22/18)
FREE THROW ATTEMPTS	27	PORTLAND (01/12/19)
	27	vs Notre Dame (11/22/18)
FREE THROW PERCENTAGE	.889 (8-9)	at Pepperdine (12/31/18)
	.889 (8-9)	WASHINGTON STATE (12/09/18)
REBOUNDS	50	vs Notre Dame (11/22/18)
	49	at Eastern Washington (11/11/18)
ASSISTS	17	SAINT MARY'S (01/03/19)
	17	MONTANA (11/07/18)
STEALS	13	PACIFIC (01/05/19)
	12	STANFORD (12/02/18)
BLOCKED SHOTS	6	STANFORD (12/02/18)
	6	at Eastern Washington (11/11/18)
	6	MONTANA (11/07/18)
TURNOVERS	25	at LMU (12/29/18)
	24	at Eastern Washington (11/11/18)
FOULS	22	IDAHO (12/20/18)
	22	at Missouri State (12-16-18)

Gonzaga Player High/Low Analysis (as of Jan 15, 2019)
All games

Gonzaga - INDIVIDUAL GAME HIGHS

Points	28		RICE, Zykeria vs Portland (01/12/19)
	23		RICE, Zykeria at Pepperdine (12/31/18)
	21		RICE, Zykeria vs Pacific (01/05/19)
	20		SMITH, Chandler vs STANFORD (12/02/18)
	20		SMITH, Chandler at Eastern Washington (11/11/18)
Field Goals Made	11		RICE, Zykeria vs Portland (01/12/19)
	11		RICE, Zykeria at Pepperdine (12/31/18)
Field Goal Att.	16		STOCKTON, Laura vs Portland (01/12/19)
	16		RICE, Zykeria vs Pacific (01/05/19)
FG Pct (min 5 made)	.917	(11-12)	RICE, Zykeria at Pepperdine (12/31/18)
	.857	(6-7)	WIRTH, Jenn vs Pacific (01/05/19)
	.857	(6-7)	WIRTH, LeeAnne vs Washington State (12/09/18)
3-Point FG Made	5		CAMPBELL, Katie vs STANFORD (12/02/18)
	4		CAMPBELL, Katie vs Western Kentucky (11/24/18)
3-Point FG Att.	7		LOERA, Jessie vs Colorado State (11/28/18)
	7		CAMPBELL, Katie vs Colorado State (11/28/18)
	7		CAMPBELL, Katie vs Western Kentucky (11/24/18)
3-Pt FG Pct (min 2 made)	1.000	(2-2)	CAMPBELL, Katie vs Pacific (01/05/19)
	1.000	(2-2)	CAMPBELL, Katie vs Rutgers (11/23/18)
Free Throws Made	8		RICE, Zykeria vs Idaho (12/20/18)
	8		SMITH, Chandler vs STANFORD (12/02/18)
Free Throw Att.	11		RICE, Zykeria vs Idaho (12/20/18)
	9		SMITH, Chandler vs STANFORD (12/02/18)
FT Pct (min 3 made)	1.000	(5-5)	STOCKTON, Laura at Eastern Washington (11/11/18)
	1.000	(4-4)	CAMPBELL, Katie vs Pacific (01/05/19)
	1.000	(4-4)	WIRTH, Jenn vs Pacific (01/05/19)
	1.000	(4-4)	RICE, Zykeria vs Saint Mary's (01/03/19)
	1.000	(4-4)	STOCKTON, Laura at LMU (12/29/18)
	1.000	(4-4)	CAMPBELL, Katie vs Washington State (12/09/18)
	1.000	(4-4)	WIRTH, LeeAnne vs Western Kentucky (11/24/18)
	1.000	(4-4)	SMITH, Chandler vs Rutgers (11/23/18)
	1.000	(4-4)	RICE, Zykeria vs Notre Dame (11/22/18)
	1.000	(4-4)	SMITH, Chandler vs Idaho State (11/13/18)
Rebounds	1.000	(3-3)	TOWNSEND, Jill at LMU (12/29/18)
	1.000	(3-3)	TOWNSEND, Jill vs Idaho State (11/13/18)
	11		RICE, Zykeria vs Colorado State (11/28/18)
Assists	11		RICE, Zykeria vs Western Kentucky (11/24/18)
	9		LOERA, Jessie vs Portland (01/12/19)
Steals	8		LOERA, Jessie vs Pacific (01/05/19)
	6		SMITH, Chandler at LMU (12/29/18)
Blocked Shots	4		STOCKTON, Laura vs Saint Mary's (01/03/19)
	4		STOCKTON, Laura at LMU (12/29/18)
	4		CAMPBELL, Katie vs Idaho (12/20/18)
	4		SMITH, Chandler at Eastern Washington (11/11/18)
	4		CAMPBELL, Katie vs Montana (11/07/18)
	4		WIRTH, Jenn vs Idaho (12/20/18)
	3		KEMPTON, Melody at Pepperdine (12/31/18)
Turnovers	3		KEMPTON, Melody vs Notre Dame (11/22/18)
	3		SMITH, Chandler at Eastern Washington (11/11/18)
	6		STOCKTON, Laura vs STANFORD (12/02/18)
Fouls	6		RICE, Zykeria vs Montana (11/07/18)
	5		TOWNSEND, Jill vs Portland (01/12/19)
	5		STOCKTON, Laura at Missouri State (12-16-18)

	5	RICE, Zykeria vs STANFORD (12/02/18)
	5	FORSYTH, Louise vs Notre Dame (11/22/18)
	5	KEMPTON, Melody vs Idaho State (11/13/18)
	5	RICE, Zykeria at Eastern Washington (11/11/18)
Minutes	35	STOCKTON, Laura at UNLV (11/17/18)
	34	SMITH, Chandler at Missouri State (12-16-18)
	34	STOCKTON, Laura vs STANFORD (12/02/18)
	34	SMITH, Chandler at Eastern Washington (11/11/18)
	33	SMITH, Chandler vs Saint Mary's (01/03/19)

Gonzaga Points-Rebounds-Assists (as of Jan 15, 2019)
All games

Opponent	Date	Score	00		03		04		05		10		11		15	
			RICE,ZYKE	WIRTH,JEN	WIRTH,LEE	FORSYTH,L	BARFIELD,	STOCKTON,	LOERA,JES							
MONTANA	11/07/18	76-52 w	11-9-2	DNP	4-3-1	5-0-0	0-0-0	13-3-4	4-2-5							
at Eastern Washington	11/11/18	63-51 w	4-10-0	DNP	6-4-0	3-2-0	DNP	13-6-5	1-1-1							
IDAHO STATE	11/13/18	70-51 w	17-7-1	DNP	8-3-0	0-0-0	0-0-0	4-3-1	3-1-3							
at UNLV	11/17/18	70-59 w	11-7-3	DNP	6-6-0	0-1-0	DNP	6-4-7	11-1-2							
vs Notre Dame	11/22/18	65-81 L	16-7-3	DNP	6-2-1	3-0-0	0-0-0	8-0-7	7-1-4							
vs Rutgers	11/23/18	57-40 w	16-5-1	DNP	6-5-0	0-2-0	0-1-0	3-4-2	6-1-0							
vs Western Kentucky	11/24/18	76-55 w	10-11-0	DNP	10-7-0	3-2-0	2-2-0	10-4-3	7-3-6							
COLORADO STATE	11/28/18	50-39 w	12-11-2	2-4-0	4-7-2	0-0-0	DNP	8-3-3	6-2-1							
STANFORD	12/02/18	79-73 w	4-6-1	8-6-0	4-3-1	DNP	DNP	7-5-5	DNP							
WASHINGTON STATE	12/09/18	76-53 w	10-1-2	8-2-2	12-2-0	0-1-0	0-0-0	10-2-2	DNP							
at Missouri State	12-16-18	70-67 w	13-8-0	14-3-0	5-2-0	DNP	DNP	6-0-3	8-2-2							
IDAHO	12/20/18	88-51 w	16-6-0	12-10-0	7-8-3	5-1-0	0-0-0	9-2-4	11-4-3							
at LMU	12/29/18	78-53 w	15-8-1	10-4-0	2-2-0	0-0-0	0-0-0	10-5-4	8-0-4							
at Pepperdine	12/31/18	79-54 w	23-6-5	9-3-0	4-1-1	3-1-0	0-1-0	4-3-4	7-4-4							
SAINT MARY'S	01/03/19	74-62 w	16-0-0	4-3-1	7-2-1	DNP	DNP	6-2-4	8-3-6							
PACIFIC	01/05/19	88-65 w	21-7-1	16-7-0	6-8-2	2-1-0	0-0-1	7-3-5	3-0-8							
PORTLAND	01/12/19	97-71 w	28-7-3	5-5-2	9-5-1	3-0-0	0-0-0	19-6-6	3-5-9							

Opponent	Date	Score	24		30		32		33	
			CAMPBELL,	SMITH,CHA	TOWNSEND	KEMPTON,				
MONTANA	11/07/18	76-52 w	13-2-1	8-6-1	14-6-1	4-5-0				
at Eastern Washington	11/11/18	63-51 w	4-1-1	20-4-1	10-10-0	2-3-1				
IDAHO STATE	11/13/18	70-51 w	14-3-1	8-8-6	9-7-0	7-5-0				
at UNLV	11/17/18	70-59 w	10-1-0	7-6-1	11-1-1	8-8-1				
vs Notre Dame	11/22/18	65-81 L	3-0-1	4-5-0	4-7-0	14-4-0				
vs Rutgers	11/23/18	57-40 w	8-5-0	8-4-2	5-2-1	5-3-0				
vs Western Kentucky	11/24/18	76-55 w	12-1-1	10-3-3	8-6-1	4-4-1				
COLORADO STATE	11/28/18	50-39 w	9-1-0	5-4-2	4-3-1	0-2-1				
STANFORD	12/02/18	79-73 w	15-7-1	20-3-3	15-3-2	6-1-1				
WASHINGTON STATE	12/09/18	76-53 w	11-4-2	8-6-6	13-5-2	4-10-1				
at Missouri State	12-16-18	70-67 w	3-1-2	15-10-3	6-5-2	0-5-0				
IDAHO	12/20/18	88-51 w	10-2-0	11-4-3	5-8-5	2-4-0				
at LMU	12/29/18	78-53 w	10-4-2	9-8-4	9-5-1	5-2-0				
at Pepperdine	12/31/18	79-54 w	6-2-0	8-5-1	9-7-0	6-1-0				
SAINT MARY'S	01/03/19	74-62 w	5-6-1	17-6-1	10-6-1	1-1-0				
PACIFIC	01/05/19	88-65 w	10-4-0	5-1-3	13-2-2	5-3-2				
PORTLAND	01/12/19	97-71 w	4-7-3	5-7-0	11-4-2	10-6-1				

Gonzaga Season Schedule/Results & Leaders (as of Jan 15, 2019)
All games

RECORD:	OVERALL	HOME	AWAY	NEUTRAL
ALL GAMES	16-1	9-0	5-0	2-1
CONFERENCE	5-0	3-0	2-0	0-0
NON-CONFERENCE	11-1	6-0	3-0	2-1

Date	Opponent	Score	Att.	High Points	High Rebounds
11/07/18	MONTANA	w 76-52	5472	(14)TOWNSEND, Jill	(9)RICE, Zykeria
11/11/18	at Eastern Washington	w 63-51	1472	(20)SMITH, Chandler	(10)TOWNSEND, Jill (10)RICE, Zykeria
11/13/18	IDAHO STATE	w 70-51	5019	(17)RICE, Zykeria	(8)SMITH, Chandler
11/17/18	at UNLV	w 70-59	1373	(11)TOWNSEND, Jill (11)RICE, Zykeria (11)LOERA, Jessie	(8)KEMPTON, Melody
11/22/18	vs Notre Dame	65-81 L	1018	(16)RICE, Zykeria	(7)RICE, Zykeria (7)TOWNSEND, Jill
11/23/18	vs Rutgers	w 57-40	1022	(16)RICE, Zykeria	(5)CAMPBELL, Katie (5)WIRTH, LeeAnne (5)RICE, Zykeria
11/24/18	vs Western Kentucky	w 76-55	722	(12)CAMPBELL, Katie	(11)RICE, Zykeria
11/28/18	COLORADO STATE	w 50-39	5065	(12)RICE, Zykeria	(11)RICE, Zykeria
12/02/18	STANFORD	w 79-73	6000	(20)SMITH, Chandler	(7)CAMPBELL, Katie
12/09/18	WASHINGTON STATE	w 76-53	5571	(13)TOWNSEND, Jill	(10)KEMPTON, Melody
12-16-18	at Missouri State	w 70-67	2066	(15)SMITH, Chandler	(10)SMITH, Chandler
12/20/18	IDAHO	w 88-51	5795	(16)RICE, Zykeria	(10)WIRTH, Jenn
12/29/18	*at LMU	w 78-53	381	(15)RICE, Zykeria	(8)RICE, Zykeria (8)SMITH, Chandler
12/31/18	*at Pepperdine	w 79-54		(23)RICE, Zykeria	(7)TOWNSEND, Jill
01/03/19	*SAINT MARY'S	w 74-62	5861	(17)SMITH, Chandler	(6)CAMPBELL, Katie (6)SMITH, Chandler (6)TOWNSEND, Jill
01/05/19	*PACIFIC	w 88-65	5807	(21)RICE, Zykeria	(8)WIRTH, LeeAnne
01/12/19	*PORTLAND	w 97-71	5697	(28)RICE, Zykeria	(7)SMITH, Chandler (7)CAMPBELL, Katie (7)RICE, Zykeria

* - Conference game

Attendance Summary	Games	Attend	Avg/Game
Home	9	50287	5587
Away	5	5292	1058
Neutral	3	2762	921
Total	17	58341	3432

Gonzaga Category Leaders (as of Jan 15, 2019)
All games

Points	G	Pts	Pts/G	Scoring Average	G	Pts	Avg/G
RICE, Zykeria	17	243	14.3	RICE, Zykeria	17	243	14.3
SMITH, Chandler	17	168	9.9	SMITH, Chandler	17	168	9.9
TOWNSEND, Jill	17	156	9.2	TOWNSEND, Jill	17	156	9.2
CAMPBELL, Katie	17	147	8.6	WIRTH, Jenn	10	88	8.8
STOCKTON, Laura	17	143	8.4	CAMPBELL, Katie	17	147	8.6
WIRTH, LeeAnne	17	106	6.2	STOCKTON, Laura	17	143	8.4
LOERA, Jessie	15	93	6.2	WIRTH, LeeAnne	17	106	6.2
WIRTH, Jenn	10	88	8.8	LOERA, Jessie	15	93	6.2
KEMPTON, Melody	17	83	4.9	KEMPTON, Melody	17	83	4.9
FORSYTH, Louise	14	27	1.9	FORSYTH, Louise	14	27	1.9
BARFIELD, Gillian	11	2	0.2	BARFIELD, Gillian	11	2	0.2

FG Percentage	FG	Att	Pct	Field Goal Attempts	G	Att	Att/G
WIRTH, Jenn	34	56	.607	RICE, Zykeria	17	186	10.9
TOWNSEND, Jill	60	111	.541	SMITH, Chandler	17	161	9.5
RICE, Zykeria	96	186	.516	STOCKTON, Laura	17	134	7.9
KEMPTON, Melody	34	75	.453	TOWNSEND, Jill	17	111	6.5
CAMPBELL, Katie	47	106	.443	WIRTH, LeeAnne	17	106	6.2
WIRTH, LeeAnne	44	106	.415	CAMPBELL, Katie	17	106	6.2
STOCKTON, Laura	53	134	.396	Field Goals Made	G	Made	Made/G
SMITH, Chandler	61	161	.379	RICE, Zykeria	17	96	5.6
LOERA, Jessie	33	89	.371	SMITH, Chandler	17	61	3.6
FORSYTH, Louise	9	28	.321	TOWNSEND, Jill	17	60	3.5
BARFIELD, Gillian	1	6	.167	STOCKTON, Laura	17	53	3.1
				CAMPBELL, Katie	17	47	2.8

3-Point Percentage	3FG	Att	Pct	3-Point FG Attempts	G	Att	Att/G
CAMPBELL, Katie	34	71	.479	CAMPBELL, Katie	17	71	4.2
TOWNSEND, Jill	11	23	.478	LOERA, Jessie	15	45	3.0
FORSYTH, Louise	6	18	.333	SMITH, Chandler	17	40	2.4
LOERA, Jessie	15	45	.333	TOWNSEND, Jill	17	23	1.4
WIRTH, LeeAnne	1	4	.250	STOCKTON, Laura	17	21	1.2
STOCKTON, Laura	5	21	.238	3-Point FG Made	G	Made	Made/G
SMITH, Chandler	8	40	.200	CAMPBELL, Katie	17	34	2.0
				LOERA, Jessie	15	15	1.0
				TOWNSEND, Jill	17	11	0.6
				SMITH, Chandler	17	8	0.5
				FORSYTH, Louise	14	6	0.4

Free Throw Percent	FG	Att	Pct	Free Throw Attempts	G	Att	Att/G
FORSYTH, Louise	3	3	1.000	RICE, Zykeria	17	73	4.3
CAMPBELL, Katie	19	20	.950	SMITH, Chandler	17	48	2.8
STOCKTON, Laura	32	34	.941	TOWNSEND, Jill	17	35	2.1
SMITH, Chandler	38	48	.792	STOCKTON, Laura	17	34	2.0
WIRTH, LeeAnne	17	23	.739	WIRTH, Jenn	10	30	3.0
TOWNSEND, Jill	25	35	.714	Free Throws Made	G	Made	Made/G
RICE, Zykeria	51	73	.699	RICE, Zykeria	17	51	3.0
KEMPTON, Melody	15	22	.682	SMITH, Chandler	17	38	2.2
WIRTH, Jenn	20	30	.667	STOCKTON, Laura	17	32	1.9
LOERA, Jessie	12	20	.600	TOWNSEND, Jill	17	25	1.5
				WIRTH, Jenn	10	20	2.0

Gonzaga Category Leaders (as of Jan 15, 2019)
All games

Rebounds	G	Reb	Reb/G	Assists	G	No.	Ast/G
RICE, Zykeria	17	116	6.8	STOCKTON, Laura	17	69	4.1
SMITH, Chandler	17	90	5.3	LOERA, Jessie	15	58	3.9
TOWNSEND, Jill	17	87	5.1	SMITH, Chandler	17	40	2.4
WIRTH, LeeAnne	17	70	4.1	RICE, Zykeria	17	25	1.5
KEMPTON, Melody	17	67	3.9	TOWNSEND, Jill	17	22	1.3
Rebound Average	G	Reb	Avg/G	Steals	G	No.	Stl/G
RICE, Zykeria	17	116	6.8	STOCKTON, Laura	17	35	2.1
SMITH, Chandler	17	90	5.3	CAMPBELL, Katie	17	26	1.5
TOWNSEND, Jill	17	87	5.1	SMITH, Chandler	17	24	1.4
WIRTH, Jenn	10	47	4.7	LOERA, Jessie	15	19	1.3
WIRTH, LeeAnne	17	70	4.1	TOWNSEND, Jill	17	16	0.9
Offensive Rebounds	G	No.	Avg/G	Blocked Shots	G	No.	Blk/G
RICE, Zykeria	17	40	2.4	KEMPTON, Melody	17	16	0.9
KEMPTON, Melody	17	40	2.4	RICE, Zykeria	17	16	0.9
WIRTH, LeeAnne	17	33	1.9	WIRTH, Jenn	10	9	0.9
TOWNSEND, Jill	17	32	1.9	SMITH, Chandler	17	9	0.5
WIRTH, Jenn	10	20	2.0	WIRTH, LeeAnne	17	9	0.5
Defensive Rebounds	G	No.	Avg/G	Minutes	G	No.	Min/G
RICE, Zykeria	17	76	4.5	SMITH, Chandler	17	477	28.1
SMITH, Chandler	17	75	4.4	STOCKTON, Laura	17	476	28.0
TOWNSEND, Jill	17	55	3.2	RICE, Zykeria	17	411	24.2
STOCKTON, Laura	17	44	2.6	WIRTH, LeeAnne	17	383	22.5
CAMPBELL, Katie	17	42	2.5	CAMPBELL, Katie	17	371	21.8
Fouls	G	No.	Per/G	Turnovers	G	No.	TO/G
TOWNSEND, Jill	17	38	2.2	STOCKTON, Laura	17	36	2.1
STOCKTON, Laura	17	37	2.2	SMITH, Chandler	17	36	2.1
WIRTH, LeeAnne	17	35	2.1	RICE, Zykeria	17	32	1.9
RICE, Zykeria	17	33	1.9	LOERA, Jessie	15	31	2.1
KEMPTON, Melody	17	29	1.7	WIRTH, LeeAnne	17	26	1.5
Foulsouts	G	No.					
RICE, Zykeria	17	2					
STOCKTON, Laura	17	1					
FORSYTH, Louise	14	1					
KEMPTON, Melody	17	1					
TOWNSEND, Jill	17	1					

Gonzaga Season/Career Statistics (as of Jan 15, 2019)
All games

SEASON STATISTICS

CAREER STATISTICS

SUMMARY	SEASON STATISTICS										CAREER STATISTICS									
	gp-gs	min/g	fg%	3fg%	ft%	r/g	a/g	stl	blk	pts/g	gp-gs	min/g	fg%	3fg%	ft%	r/g	a/g	stl	blk	pts/g
RICE, Zykeria	17-17	24.2	.516	.000	.699	6.8	1.5	15	16	14.3	94-49	16.0	.499	.000	.684	4.1	0.6	56	55	8.4
SMITH, Chandler	17-17	28.1	.379	.200	.792	5.3	2.4	24	9	9.9	83-50	23.5	.381	.281	.752	4.4	2.1	112	40	7.6
TOWNSEND, Jill	17-0	21.4	.541	.478	.714	5.1	1.3	16	4	9.2	49-0	16.0	.486	.286	.738	3.6	0.9	31	9	5.9
WIRTH, Jenn	10-0	18.3	.607	.000	.667	4.7	0.5	5	9	8.8	42-2	18.0	.530	.000	.662	3.6	0.8	21	23	5.6
CAMPBELL, Katie	17-9	21.8	.443	.479	.950	3.0	0.9	26	2	8.6	45-9	12.8	.375	.380	.962	2.0	0.5	37	2	4.4
STOCKTON, Laura	17-17	28.0	.396	.238	.941	3.2	4.1	35	1	8.4	112-78	24.2	.414	.244	.776	2.5	3.6	149	16	7.2
WIRTH, LeeAnne	17-17	22.5	.415	.250	.739	4.1	0.8	14	9	6.2	47-17	15.4	.436	.429	.556	2.8	0.4	28	19	4.6
LOERA, Jessie	15-8	23.2	.371	.333	.600	2.0	3.9	19	1	6.2	77-15	18.6	.370	.299	.638	1.7	2.8	88	7	4.7
KEMPTON, Melody	17-0	15.9	.453	.000	.682	3.9	0.5	14	16	4.9	17-0	15.9	.453	.000	.682	3.9	0.5	14	16	4.9
FORSYTH, Louise	14-0	7.1	.321	.333	1.000	0.8	0.0	6	0	1.9	27-0	5.1	.308	.308	1.000	0.4	0.0	7	0	1.4
BARFIELD, Gillian	11-0	1.6	.167	.000	.000	0.4	0.1	0	0	0.2	18-0	1.5	.143	.000	.000	0.2	0.2	0	0	0.1
SCORING	fg-fga	fg%	3fg-fga	3fg%	ft-fta	ft%	pts	pts/g	fg-fga	fg%	3fg-fga	3fg%	ft-fta	ft%	pts	pts/g				
RICE, Zykeria	96-186	.516	0-0	.000	51-73	.699	243	14.3	310-621	.499	0-6	.000	173-253	.684	793	8.4				
SMITH, Chandler	61-161	.379	8-40	.200	38-48	.792	168	9.9	228-598	.381	59-210	.281	112-149	.752	627	7.6				
TOWNSEND, Jill	60-111	.541	11-23	.478	25-35	.714	156	9.2	106-218	.486	16-56	.286	62-84	.738	290	5.9				
WIRTH, Jenn	34-56	.607	0-0	.000	20-30	.667	88	8.8	97-183	.530	0-3	.000	43-65	.662	237	5.6				
CAMPBELL, Katie	47-106	.443	34-71	.479	19-20	.950	147	8.6	63-168	.375	46-121	.380	25-26	.962	197	4.4				
STOCKTON, Laura	53-134	.396	5-21	.238	32-34	.941	143	8.4	310-748	.414	38-156	.244	152-196	.776	810	7.2				
WIRTH, LeeAnne	44-106	.415	1-4	.250	17-23	.739	106	6.2	88-202	.436	3-7	.429	35-63	.556	214	4.6				
LOERA, Jessie	33-89	.371	15-45	.333	12-20	.600	93	6.2	132-357	.370	55-184	.299	44-69	.638	363	4.7				
KEMPTON, Melody	34-75	.453	0-0	.000	15-22	.682	83	4.9	34-75	.453	0-0	.000	15-22	.682	83	4.9				
FORSYTH, Louise	9-28	.321	6-18	.333	3-3	1.000	27	1.9	12-39	.308	8-26	.308	5-5	1.000	37	1.4				
BARFIELD, Gillian	1-6	.167	0-0	.000	0-0	.000	2	0.2	1-7	.143	0-0	.000	0-0	.000	2	0.1				
TOTALS	o-reb	d-reb	t-reb	pf	fo	ast	to	a/to	o-reb	d-reb	t-reb	pf	fo	ast	to	a/to				
RICE, Zykeria	40	76	116	33	2	25	32	0.8	148	241	389	150	3	60	129	0.5				
SMITH, Chandler	15	75	90	18	0	40	36	1.1	90	273	363	83	0	177	126	1.4				
TOWNSEND, Jill	32	55	87	38	1	22	18	1.2	75	102	177	93	1	44	43	1.0				
WIRTH, Jenn	20	27	47	19	0	5	14	0.4	64	89	153	72	1	32	38	0.8				
CAMPBELL, Katie	9	42	51	28	0	16	17	0.9	14	77	91	47	0	24	26	0.9				
STOCKTON, Laura	11	44	55	37	1	69	36	1.9	51	231	282	221	2	401	245	1.6				
WIRTH, LeeAnne	33	37	70	35	0	13	26	0.5	61	69	130	55	0	18	41	0.4				
LOERA, Jessie	3	27	30	13	0	58	31	1.9	24	107	131	85	0	217	122	1.8				
KEMPTON, Melody	40	27	67	29	1	9	18	0.5	40	27	67	29	1	9	18	0.5				
FORSYTH, Louise	4	7	11	13	1	0	4	0.0	4	8	12	14	1	1	7	0.1				
BARFIELD, Gillian	1	3	4	2	0	1	3	0.3	1	3	4	3	0	3	4	0.8				

Official Basketball Box Score -- Game Totals -- Final Statistics
No. 8/7 Stanford vs Gonzaga
12/02/18 2:00 PM at Spokane, WA (McCarthy Athletic Center)

No. 8/7 Stanford 73 • 6-1

Table with columns for Player, FG-FGA, 3-Ptr, FT-FTA, Rebounds (Off Def Tot), PF, TP, A TO Blk Stl, and Min. Includes totals for Stanford and game statistics.

Gonzaga 79 • 8-1

Table with columns for Player, FG-FGA, 3-Ptr, FT-FTA, Rebounds (Off Def Tot), PF, TP, A TO Blk Stl, and Min. Includes totals for Gonzaga and game statistics.

Officials: Lisa Jones, Michael Price, Richard Waters
Technical fouls: No. 8/7 Stanford-None. Gonzaga-None.
Attendance: 6000

Score by periods table for Stanford vs Gonzaga game.

Last FG - STAN 4th-00:37, GON 4th-00:13.
Largest lead - STAN by 5 1st-08:43, GON by 18 3rd-02:00.
STAN led for 03:57. GON led for 34:47. Game was tied for 00:46.

Score tied - 2 times.
Lead changed - 3 times.

Official Basketball Box Score -- Game Totals -- Final Statistics
Washington State vs Gonzaga
12/09/18 2:00 PM at Spokane, WA (McCarthy Athletic Center)

Washington State 53 • 4-5

Table with columns for Player, FG-FGA, 3-Ptr, FT-FTA, Rebounds (Off Def Tot), PF, TP, A TO Blk Stl, and Min. Includes totals for Washington State and game statistics.

Gonzaga 76 • 9-1

Table with columns for Player, FG-FGA, 3-Ptr, FT-FTA, Rebounds (Off Def Tot), PF, TP, A TO Blk Stl, and Min. Includes totals for Gonzaga and game statistics.

Officials: Brenda Pantoja, InFini Robinson, Kimberly Hobbs
Technical fouls: Washington State-None. Gonzaga-None.
Attendance: 5571

Score by periods table for Washington State vs Gonzaga game.

Last FG - WSU 4th-01:04, GON 4th-00:55.
Largest lead - WSU by 7 1st-02:32, GON by 28 4th-06:09.
WSU led for 07:42. GON led for 29:13. Game was tied for 03:05.

Score tied - 5 times.
Lead changed - 2 times.

Official Basketball Box Score -- Game Totals -- Final Statistics
Gonzaga vs Missouri State
12-16-18 2:05 p.m. at Springfield, Mo. (JQH Arena)

Gonzaga 70 • 10-1

Table with columns for Player, FG-FGA, 3-Ptr, FT-FTA, Rebounds (Off Def Tot), PF, TP, A TO Blk Stl, and Min. Includes totals for Gonzaga and game statistics.

Missouri State 67 • 1-7

Table with columns for Player, FG-FGA, 3-Ptr, FT-FTA, Rebounds (Off Def Tot), PF, TP, A TO Blk Stl, and Min. Includes totals for Missouri State and game statistics.

Officials: Missy Brooks, Michelle Kramer, Marcus Barnett
Technical fouls: Gonzaga-None. Missouri State-None.
Attendance: 2066
Franklin (MSU) fouls out at 3:56 of 4th. Stockton (GU) fouls out at 0:33 of 4th. Gitzen fouls out at 0:01 of 4th.

Score by periods table for Gonzaga vs Missouri State game.

Last FG - GON 4th-00:52, MSU 4th-00:03.
Largest lead - GON by 14 2nd-00:41, MSU by 1 1st-05:53.
GON led for 37:41. MSU led for 00:19. Game was tied for 01:17.

Score tied - 1 time.
Lead changed - 2 times.

Official Basketball Box Score -- Game Totals -- Final Statistics
Idaho vs No. 21/21 Gonzaga
12/20/18 6:00 PM at Spokane, WA (McCarthy Athletic Center)

Idaho 51 • 3-6

Table with columns for Player, FG-FGA, 3-Ptr, FT-FTA, Rebounds (Off Def Tot), PF, TP, A TO Blk Stl, and Min. Includes totals for Idaho and game statistics.

No. 21/21 Gonzaga 88 • 11-1

Table with columns for Player, FG-FGA, 3-Ptr, FT-FTA, Rebounds (Off Def Tot), PF, TP, A TO Blk Stl, and Min. Includes totals for Gonzaga and game statistics.

Officials: Anita Ortega, Irefywna (Ify) Seales, Ashley Ellis
Technical fouls: Idaho-None. No. 21/21 Gonzaga-None.
Attendance: 5795

Score by periods table for Idaho vs Gonzaga game.

Last FG - IDAHO 4th-00:29, GON 4th-00:43.
Largest lead - IDAHO None, GON by 39 4th-00:43.
IDAHO led for 00:00. GON led for 39:45. Game was tied for 00:15.

Score tied - 0 times.
Lead changed - 0 times.

Official Basketball Box Score -- Game Totals -- Final Statistics
Portland vs No. 14/15 Gonzaga
01/12/19 2:00 PM at Spokane, WA (McCarthy Athletic Center)

Portland 71 • 8-8, 0-5

##	Player	Total			3-Ptr			Rebounds			PF	TP	A	TO	Blk	Stl	Min
		FG-FGA	FG-FGA	FT-FTA	FG-FGA	FG-FGA	FT-FTA	Off	Def	Tot							
14	GORZEMAN, Jayce	f	5-8	2-4	3-4	0	1	1	1	15	0	1	0	2	28		
23	SPENCER, Julie	f	5-11	2-6	3-4	1	5	6	4	15	0	1	0	1	29		
01	ANDERSEN, Kate	g	1-6	0-1	0-0	1	2	3	4	2	1	4	0	1	17		
03	MATZ, Josie	g	0-5	0-3	4-4	0	2	2	0	4	1	3	0	1	23		
32	SLAGA, Darian	g	5-13	0-5	3-3	0	1	1	2	13	0	3	0	2	36		
02	KAITU'U, Liana		4-6	0-0	1-5	1	1	2	5	9	0	2	0	1	22		
10	ANDREWS, Haylee		2-8	0-1	6-7	1	4	5	2	10	2	2	0	1	23		
15	MUHLHEIM, Maddie		1-5	1-4	0-0	1	2	3	2	3	2	0	0	1	18		
22	WOOLDRIDGE, Kristina		0-0	0-0	0-0	0	0	0	0	0	0	0	0	0	1		
24	ALAI, Elena		0-1	0-1	0-0	1	1	2	0	0	0	0	1	0	1		
35	PARKER, Shasta		0-0	0-0	0-0	0	0	0	0	0	0	0	0	0	1		
44	WALKER, Lauren		0-1	0-0	0-0	1	0	1	0	0	0	0	0	0	1		
Team						2	2	4									
Totals			23-64	5-25	20-27	9	21	30	20	71	6	16	1	10	200		

1st - FG %: 5-16 31.3% 2nd: 7-15 46.7% 3rd: 6-14 42.9% 4th: 5-19 26.3% Game: 23-64 35.9% Deadball
 3FG %: 1-4 25.0% 1-6 16.7% 3-8 37.5% 0-7 0.0% 5-25 20.0% Rebounds
 FT %: 2-2 100.0% 4-6 66.7% 5-8 62.5% 9-11 81.8% 20-27 74.1% 3

No. 14/15 Gonzaga 97 • 16-1, 5-0

##	Player	Total			3-Ptr			Rebounds			PF	TP	A	TO	Blk	Stl	Min
		FG-FGA	FG-FGA	FT-FTA	FG-FGA	FG-FGA	FT-FTA	Off	Def	Tot							
00	RICE, Zykeria	f	11-13	0-0	6-7	5	2	7	2	28	3	3	1	1	23		
04	WIRTH, LeeAnne	f	4-8	0-0	1-2	1	4	5	3	9	1	0	0	0	21		
11	STOCKTON, Laura	g	9-16	1-3	0-0	2	4	6	1	19	6	3	0	2	27		
24	CAMPBELL, Katie	g	1-4	1-4	1-2	1	6	7	3	4	3	1	0	1	22		
30	SMITH, Chandler	g	2-5	0-0	1-2	3	4	7	2	5	0	2	0	0	20		
03	WIRTH, Jenn		2-5	0-0	1-3	3	2	5	3	5	2	1	1	1	13		
05	FORSYTH, Louise		1-3	1-3	0-0	0	0	0	2	3	0	0	0	0	6		
10	BARFIELD, Gillian		0-1	0-0	0-0	0	0	0	1	0	0	1	0	0	2		
15	LOERA, Jessie		1-8	0-3	1-2	0	5	5	1	3	9	4	0	1	27		
32	TOWNSEND, Jill		5-8	1-3	0-2	1	3	4	5	11	2	0	0	1	18		
33	KEMPTON, Melody		5-8	0-0	0-0	4	2	6	1	10	1	0	0	2	21		
Team						2	4	6			1						
Totals			41-79	4-16	11-20	22	36	58	24	97	27	16	2	9	200		

1st - FG %: 13-20 65.0% 2nd: 9-20 45.0% 3rd: 9-19 47.4% 4th: 10-20 50.0% Game: 41-79 51.9% Deadball
 3FG %: 1-4 25.0% 0-4 0.0% 1-3 33.3% 2-5 40.0% 4-16 25.0% Rebounds
 FT %: 2-5 40.0% 2-2 100.0% 4-6 66.7% 3-7 42.9% 11-20 55.0% 4

Officials: Kenneth Nash, Alecia Murray, Alex Carroll
 Technical fouls: Portland-None. No. 14/15 Gonzaga-None.
 Attendance: 5697

Score by periods	1st	2nd	3rd	4th	Total
Portland	13	19	20	19	71
No. 14/15 Gonzaga	29	20	23	25	97

Points	In	Off	2nd	Fast	Bench
	Paint	T/O	Chance	Break	
POR	26	9	5	6	22
GON	42	26	23	4	32

Last FG - POR 4th-01:41, GON 4th-01:23.
 Largest lead - POR by 2 1st-09:25, GON by 28 4th-01:52.
 POR led for 00:29. GON led for 38:21. Game was tied for 01:10.

Score tied - 1 time.
 Lead changed - 1 time.

Gonzaga Combined Team Statistics (as of Jan 12, 2019)
Conference games

RECORD:	OVERALL	HOME	AWAY	NEUTRAL
ALL GAMES	5-0	3-0	2-0	0-0
CONFERENCE	5-0	3-0	2-0	0-0
NON-CONFERENCE	0-0	0-0	0-0	0-0

##	Player	gp-gs	min	avg	Total		3-Point		F-Throw		Rebounds				pf	dq	a	to	blk	stl	pts	avg
					fg-fga	fg%	3fg-fga	3fg%	ft-fta	ft%	off	def	tot	avg								
00	RICE, Zykeria	5-5	119	23.8	45-67	.67	0-0	.00	13-18	.72	16	12	28	5.6	5	0	10	11	4	5	103	20.6
32	TOWNSEND, Jill	5-0	111	22.2	21-36	.58	4-9	.44	6-11	.54	6	18	24	4.8	11	1	6	6	0	5	52	10.4
11	STOCKTON, Laur	5-5	124	24.8	18-41	.43	1-4	.25	9-9	1.000	4	15	19	3.8	9	0	23	6	1	12	46	9.2
30	SMITH, Chandler	5-5	130	26.0	16-39	.41	4-9	.44	8-11	.72	4	23	27	5.4	6	0	9	7	2	8	44	8.8
03	WIRTH, Jenn	5-0	90	18.0	18-30	.60	0-0	.00	8-12	.66	6	16	22	4.4	13	0	3	9	4	3	44	8.8
24	CAMPBELL, Katie	5-5	111	22.2	10-27	.37	8-22	.36	7-8	.87	5	18	23	4.6	7	0	6	10	1	6	35	7.0
15	LOERA, Jessie	5-0	108	21.6	10-28	.35	2-9	.22	7-9	.77	1	11	12	2.4	4	0	31	11	0	9	29	5.8
04	WIRTH, LeeAnne	5-5	107	21.4	12-28	.42	0-0	.00	4-5	.80	7	11	18	3.6	10	0	5	7	2	3	28	5.6
33	KEMPTON, Melod	5-0	72	14.4	12-20	.60	0-0	.00	3-6	.50	8	5	13	2.6	7	0	3	4	5	4	27	5.4
05	FORSYTH, Louise	4-0	21	5.3	2-7	.28	2-6	.33	2-2	1.000	1	1	2	0.5	3	0	0	1	0	1	8	2.0
10	BARFIELD, Gillian	4-0	7	1.8	0-3	.00	0-0	.00	0-0	.00	1	0	1	0.3	1	0	1	1	0	0	0	0.0
Team											8	10	18				1					
Total.....		5	1000		164-326	.50	21-59	.35	67-91	.73	67	140	207	41.4	76	1	97	74	19	56	416	83.2
Opponents.....		5	1000		106-285	.37	28-96	.29	65-87	.74	45	105	150	30.0	85	-	54	93	12	44	305	61.0

TEAM STATISTICS	GON	OPP	Date	Opponent	Score	Att.
SCORING	416	305	* 12/29/18	at LMU	w 78-53	381
Points per game	83.2	61.0	* 12/31/18	at Pepperdine	w 79-54	0
Scoring margin	+22.2	-	* 01/03/19	SAINT MARY'S	w 74-62	5861
FIELD GOALS-ATT	164-326	106-285	* 01/05/19	PACIFIC	w 88-65	5807
Field goal pct	.503	.372	* 01/12/19	PORTLAND	w 97-71	5697
3 POINT FG-ATT	21-59	28-96	* - Conference game			
3-point FG pct	.356	.292				
3-pt FG made per gam	4.2	5.6				
FREE THROWS-ATT	67-91	65-87				
Free throw pct	.736	.747				
F-Throws made per ga	13.4	13.0				
REBOUNDS	207	150				
Rebounds per game	41.4	30.0				
Rebounding margin	+11.4	-				
ASSISTS	97	54				
Assists per game	19.4	10.8				
TURNOVERS	74	93				
Turnovers per game	14.8	18.6				
Turnover margin	+3.8	-				
Assist/turnover ratio	1.3	0.6				
STEALS	56	44				
Steals per game	11.2	8.8				
BLOCKS	19	12				
Blocks per game	3.8	2.4				
ATTENDANCE	17365	381				
Home games-Avg/Gam	3-5788	2-190				
Neutral site-Avg/Game	-	0-0				

Score by Periods	1st	2nd	3rd	4th	Totals
Gonzaga	93	99	122	102	416
Opponents	84	74	74	73	305

Gonzaga Combined Team Statistics (as of Jan 12, 2019)
All games

RECORD:	OVERALL	HOME	AWAY	NEUTRAL
ALL GAMES	16-1	9-0	5-0	2-1
CONFERENCE	5-0	3-0	2-0	0-0
NON-CONFERENCE	11-1	6-0	3-0	2-1

#	Player	gp-gs	Total			3-Point		F-Throw		Rebounds				pf	dq	a	to	blk	stl	pts	avg	
			min	avg	fg-fga	fg%	3fg-fga	3fg%	ft-fga	ft%	off	def	tot									avg
30	RICE, Zykeria	17-17	411	24.2	96-186	.51	0-0	.00	51-73	.69	40	76	116	6.8	33	2	25	32	16	15	243	14.3
30	SMITH, Chandler	17-17	477	28.1	61-161	.37	8-40	.20	38-48	.79	15	75	90	5.3	18	0	40	36	9	24	168	9.9
32	TOWNSEND, Jill	17-0	363	21.4	60-111	.54	11-23	.47	25-35	.71	32	55	87	5.1	38	1	22	18	4	16	156	9.2
33	WIRTH, Jenn	10-0	183	18.3	34-56	.60	0-0	.00	20-30	.66	20	27	47	4.7	19	0	5	14	9	5	88	8.8
24	CAMPBELL, Katie	17-9	371	21.8	47-106	.44	34-71	.47	19-20	.95	9	42	51	3.0	28	0	16	17	2	26	147	8.6
11	STOCKTON, Laur	17-17	476	28.0	53-134	.39	5-21	.23	32-34	.94	11	44	55	3.2	37	1	69	36	1	35	143	8.4
34	WIRTH, LeeAnne	17-17	383	22.5	44-106	.41	1-4	.25	17-23	.73	33	37	70	4.1	35	0	13	26	9	14	106	6.2
15	LOERA, Jessie	15-8	348	23.2	33-89	.37	15-45	.33	12-20	.60	3	27	30	2.0	13	0	58	31	1	19	93	6.2
33	KEMPTON, Melod	17-0	271	15.9	34-75	.45	0-0	.00	15-22	.68	40	27	67	3.9	29	1	9	18	16	14	83	4.9
35	FORSYTH, Louise	14-0	99	7.1	9-28	.32	6-18	.33	3-3	1.000	4	7	11	0.8	13	1	0	4	0	6	27	1.9
10	BARFIELD, Gillian	11-0	18	1.6	1-6	.16	0-0	.00	0-0	.00	1	3	4	0.4	2	0	1	3	0	0	2	0.2
Team											33	30	63									8
Total.....		17	3400	472-105		.44	80-222	.362	232-308	.75	241	450	691	40.6	265	6	258	243	67	174	125	73.9
Opponents.....		17	3400	346-946		.36	86-308	.271	199-277	.71	179	375	554	32.6	278	-	183	302	52	120	977	57.5

TEAM STATISTICS	GON	OPP	Date	Opponent	Score	Att.
SCORING	1256	977	11/07/18	MONTANA	w 76-52	5472
Points per game	73.9	57.5	11/11/18	at Eastern Washington	w 63-51	1472
Scoring margin	+16.4	-	11/13/18	IDAHO STATE	w 70-51	5019
FIELD GOALS-ATT	472-1058	346-946	11/17/18	at UNLV	w 70-59	1373
Field goal pct	.446	.366	11/22/18	vs Notre Dame	L 65-81	1018
3 POINT FG-ATT	80-222	86-308	11/23/18	vs Rutgers	w 57-40	1022
3-point FG pct	.360	.279	11/24/18	vs Western Kentucky	w 76-55	722
3-pt FG made per gam	4.7	5.1	11/28/18	COLORADO STATE	w 50-39	5065
FREE THROWS-ATT	232-308	199-277	12/02/18	STANFORD	w 79-73	6000
Free throw pct	.753	.718	12/09/18	WASHINGTON STATE	w 76-53	5571
F-Throws made per ga	13.6	11.7	12-16-18	at Missouri State	w 70-67	2066
REBOUNDS	691	554	12/20/18	IDAHO	w 88-51	5795
Rebounds per game	40.6	32.6	* 12/29/18	at LMU	w 78-53	381
Rebounding margin	+8.1	-	* 12/31/18	at Pepperdine	w 79-54	0
ASSISTS	258	183	* 01/03/19	SAINT MARY'S	w 74-62	5861
Assists per game	15.2	10.8	* 01/05/19	PACIFIC	w 88-65	5807
TURNOVERS	243	302	* 01/12/19	PORTLAND	w 97-71	5697
Turnovers per game	14.3	17.8				
Turnover margin	+3.5	-	* - Conference game			
Assist/turnover ratio	1.1	0.6				
STEALS	174	120				
Steals per game	10.2	7.1				
BLOCKS	67	52				
Blocks per game	3.9	3.1				
ATTENDANCE	50287	8054				
Home games-Avg/Gam	9-5587	5-1058				
Neutral site-Avg/Game	-	3-921				

Score by Periods	1st	2nd	3rd	4th	Totals
Gonzaga	294	313	341	308	1256
Opponents	234	225	255	263	977

INDIVIDUAL TOP TENS

SEASON

POINTS

- Courtney Vandersloot 712 (2010-11)
- Maria Stack 707 (1984-85)
- Heather Bowman 641 (2008-09)
- Kayla Standish 617 (2010-11)
- Katelan Redmon 600 (2010-11)
- Tammy Tibbles 597 (1986-87)
- Heather Bowman 584 (2007-08)
- Kayla Standish 557 (2011-12)
- Jill Barta 554 (2016-17)
- Courtney Vandersloot 524 (2008-09)

FIELD GOALS MADE

- Maria Stack 264 (1984-85)
- Kayla Standish 261 (2010-11)
- Katelan Redmon 258 (2010-11)
- Courtney Vandersloot 254 (2010-11)
- Tammy Tibbles 240 (1986-87)
- Heather Bowman 237 (2008-09)
- Heather Bowman 217 (2007-08)
- Tammy Tibbles 215 (1984-85)
- Lisa Vestal 215 (1985-86)
- Kayla Standish 214 (2011-12)

FIELD GOAL PERCENTAGE
(minimum two fgm/game)

- Sheri McNeal .576 (98-170) 1984-85
- Kayla Standish .560 (261-466) 2010-11
- Tammy Tibbles .540 (213-398) 1984-85
- Ashley Burke .537 (166-309) 2004-05
- Katelan Redmon .531 (153-288) 2009-10
- Claire Raap .531 (86-162) 2010-11
- Katelan Redmon .530 (258-487) 2010-11
- Heather Bowman .529 (217-540) 2007-08
- Ashley Burke .529 (163-308) 2003-04
- Kelli Howell .529 (120-227) 1993-94

3-POINT FIELD GOALS MADE

- Jessica Malone 90 (2001-02)
- Jessica Malone 78 (1999-00)
- Jessica Malone 77 (2000-01)
- Shannon Mathews 72 (2002-03)
- Taelor Karr 69 (2012-13)
- Ivy Safranski 65 (1993-94)
- Keani Albanez 64 (2014-15)
- Tiffanie Shives 64 (2009-10)
- Keani Albanez 60 (2013-14)
- Shannon Mathews 57 (2004-05)

3-POINT FIELD GOALS ATTEMPTED

- Jessica Malone 226 (2001-02)
- Jessica Malone 225 (2000-01)
- Jessica Malone 215 (1999-00)
- Shannon Mathews 202 (2002-03)
- Keani Albanez 181 (2014-15)
- Keani Albanez 169 (2013-14)
- Shannon Mathews 178 (2004-05)
- Taelor Karr 158 (2012-13)
- Lindsay Sherbert 158 (2013-14)
- Ivy Safranski 155 (1993-94)
- Jessica Malone 155 (1998-99)

FREE THROWS MADE

- Maria Stack 179 (1984-85)
- Heather Bowman 166 (2008-09)
- Courtney Vandersloot 162 (2010-11)
- Heather Bowman 150 (2007-08)
- Lisa Nichols 150 (1990-91)
- Jill Barta 149 (2016-17)**
- Jill Barta 138 (2015-16)
- Stephanie Hawk 135 (2006-07)
- Courtney Vandersloot 129 (2008-09)
- Ashley Burke 127 (2004-05)
- Kayla Standish 127 (2011-12)

FREE THROW PERCENTAGE
(min. 2 FT attempted per game)

- Jennifer Mountain .866 (71-82) 1989-90
- Keani Albanez .859 (85-99) 2014-15
- Ivy Safranski .852 (92-108) 1994-95
- Triana Allen .850 (34-40) 2000-01
- Chelsea Herman .846 (77-91) 1995-96
- Lisa Nichols .843 (91-108) 1989-90
- Ivy Safranski .843 (70-83) 1991-92
- Katelan Redmon .835 (71-85) 2010-11
- Carla Curfman .835 (86-103) 1988-89
- Shannon Mathews .833 (45-54) 2001-02

REBOUNDS

- Kayla Standish 304 (2010-11)
- Lisa Vestal 292 (1984-85)
- Juanita Rivera 289 (1993-94)
- Lisa Vestal 288 (1985-86)
- Shelby Cheslek 283 (2015-16)
- Kay Koppelman 282 (1990-91)
- Shelby Cheslek 279 (2014-15)
- Juanita Rivera 276 (1991-92)
- Stephanie Hawk 272 (2006-07)
- Kay Koppelman 267 (1989-90)

ASSISTS

- Courtney Vandersloot 367 (2010-11)
- Courtney Vandersloot 321 (2009-10)
- Courtney Vandersloot 239 (2008-09)
- Maria Stack 207 (1984-85)
- Shannon Mathews 197 (2004-05)
- Courtney Vandersloot 191 (2007-08)
- Shannon Mathews 162 (2002-03)
- Taelor Karr 152 (2011-12)
- Amy Simpson 149 (1985-86)
- Shannon Mathews 141 (2003-04)

STEALS

- Courtney Vandersloot 121 (2009-10)
- Courtney Vandersloot 114 (2010-11)
- Haiden Palmer 105 (2012-13)
- Haiden Palmer 103 (2013-14)
- Maria Stack 96 (1984-85)
- Keani Albanez 80 (2014-15)
- Haiden Palmer 78 (2011-21)
- Ivy Safranski 73 (1994-95)
- Courtney Vandersloot 69 (2008-09)
- Vivian Frieson 66 (2008-09)
- Tammy Tibbles 66 (1984-85)
- Jasmine Redmon 66 (2013-14)

BLOCKED SHOTS

- Stephanie Hawk 77 (2006-07)
- Janet Robertson 70 (1981-82)
- Shelby Cheslek 65 (2015-16)
- Kayla Standish 59 (2010-11)
- Vivian Frieson 56 (2008-09)
- Shelby Cheslek 53 (2014-15)
- Juanita Rivera 53 (1991-92)
- Shelby Cheslek 50 (2012-13)
- Kayla Standish 50 (2011-12)
- Kayla Standish 49 (2009-10)

CAREER

GAMES PLAYED

- Elle Tinkle 143 (2012-17)
- Kelly Bowen 138 (2008-12)
- Kayla Standish 138 (2008-12)
- Courtney Vandersloot 136 (2007-11)
- Sunny Greinacher 135 (2011-15)
- Janelle Bekkering 135 (2007-11)
- Shelby Cheslek 134 (2012-16)
- Haiden Palmer 134 (2010-14)
- Keani Albanez 132 (2011-15)
- Heather Bowman 129 (2006-10)

POINTS

- Heather Bowman 2,165 (2006-10)
- Courtney Vandersloot 2,073 (2007-11)
- Tammy Tibbles 2,011 (1984-88)
- Jessica Malone 1,703 (1998-02)
- Ivy Safranski 1,702 (1991-95)
- Ashley Burke 1,631 (2002-05)
- Jill Barta 1,620 (2015-18)
- Kayla Standish 1,583 (2008-12)
- Jennifer Mountain 1,422 (1987-91)
- Katelan Redmon 1,412 (2009-12)

FIELD GOALS MADE

- Tammy Tibbles 828 (1984-88)
- Heather Bowman 822 (2006-10)
- Courtney Vandersloot 736 (2007-11)
- Kayla Standish 630 (2008-12)
- Ashley Burke 606 (2002-05)
- Katelan Redmon 595 (2009-12)
- Ivy Safranski 580 (1991-95)
- Jessica Malone 568 (1998-02)
- Amy Simpson 552 (1982-86)
- Haiden Palmer 550 (2010-14)

FIELD GOAL PERCENTAGE

- Katelan Redmon .517 (515-1151) 2009-12
- Ashley Burke .516 (606-1174) 2002-05
- Heather Bowman .512 (822-1606) 2006-10
- Sheri McNeal .507 (152-300) 1982-85
- Sunny Greinacher .502 (541-1077) 2011-15
- Ashley Anderson .498 (332-666) 2003-06
- Lisa Vestal .491 (401-817) 1983-86
- Colleen Palmer .489 (161-329) 1983
- Kayla Standish .488 (630-1290) 2008-12
- Joy Pauley .485 (212-437) 1992-96

3-POINT FIELD GOALS MADE

- Jessica Malone 298 (1998-02)
- Shannon Mathews 208 (2002-05)
- Ivy Safranski 181 (1991-95)
- Keani Albanez 164 (2011-15)
- Courtney Vandersloot 146 (2007-11)
- Emma Stach 141 (2014-18)
- Raeanna Jewell 138 (2002-05)
- Tiffanie Shives 135 (2007-10)
- Holly Bruno 123 (1997-00)
- Janelle Bekkering 121 (2007-11)

3-POINT FIELD GOALS ATTEMPTED

- Jessica Malone 821 (1998-02)
- Shannon Mathews 636 (2002-05)
- Ivy Safranski 499 (1991-95)
- Keani Albanez 478 (2011-15)
- Raeanna Jewell 457 (2002-05)
- Courtney Vandersloot 408 (2007-11)
- Janelle Bekkering 378 (2007-11)
- Holly Bruno 366 (1997-00)
- Haiden Palmer 364 (2010-14)
- Tiffanie Shives 337 (2007-10)

FREE THROWS MADE

- Heather Bowman 520 (2006-10)
- Courtney Vandersloot 455 (2007-11)
- Jill Barta 442 (2015-18)
- Ashley Burke 386 (2002-05)
- Ivy Safranski 361 (1991-95)
- Stephanie Hawk 328 (2004-07)
- Tammy Tibbles 316 (1984-88)
- Lisa Nichols 298 (1987-91)
- Kayla Standish 289 (2008-12)
- Amy Simpson 282 (1982-86)

FREE THROW PERCENTAGE

- Shannon Mathews .840 (210-250) 2002-05
- Ivy Safranski .828 (255-308) 1991-95
- Lisa Nichols .826 (298-361) 1989-91
- Joy Pauley .816 (93-114) 1992-96
- Keani Albanez .806 (174-216) 2011-15
- Raeanna Jewell .804 (152-189) 2002-05
- Heather Bowman .802 (520-648) 2006-10
- Chelsea Herman .798 (174-218) 1992-97
- Katelan Redmon .796 (195-245) 2009-12
- Sunny Greinacher .786 (232-295) 2011-15

REBOUNDS

- Kay Koppelman 983 (1987-91)
- Shelby Cheslek 932 (2012-16)
- Heather Bowman 874 (2006-10)
- Vivian Frieson 832 (2006-10)
- Juanita Rivera 820 (1991-94)
- Kayla Standish 809 (2008-12)
- Ashley Burke 697 (2002-05)
- Stephanie Hawk 684 (2004-07)
- Loretta O'Brien 679 (1980-86)
- Kelly Bowen 648 (2008-12)

ASSISTS

- Courtney Vandersloot 1118 (2007-11)
- Shannon Mathews 600 (2002-05)
- Amy Simpson 439 (1982-86)
- Laura Stockton 401 (2015-19)**
- Jasmine Redmon 400 (2010-14)
- Carla Curfman 393 (1985-89)
- Robin Allen 355 (1984-88)
- Ivy Safranski 291 (1991-95)
- Rachel Kane 285 (2004-08)
- Jessica Malone 284 (1998-02)

STEALS

- Courtney Vandersloot 366 (2007-11)
- Haiden Palmer 286 (2011-14)
- Amy Simpson 235 (1982-86)
- Ivy Safranski 221 (1991-95)
- Shannon Mathews 217 (2002-05)
- Jasmine Redmon 211 (2010-14)
- Tammy Tibbles 205 (1984-88)
- Elle Tinkle 188 (2012-17)
- Keani Albanez 180 (2011-15)
- Raeanna Jewell 177 (2002-05)

BLOCKED SHOTS

- Shelby Cheslek 213 (2012-16)
- Kayla Standish 176 (2008-12)
- Stephanie Hawk 167 (2004-07)
- Janet Robertson 152 (1980-84)
- Vivian Frieson 132 (2006-10)
- Juanita Rivera 130 (1991-94)
- Kelli Howell 110 (1991-95)
- Kay Koppelman 101 (1987-91)
- Anne Bickelhaupt 101 (2000-04)
- Melanie Tipps 90 (1997-02)

TV/RADIO ROSTER



00

Zykeria Rice
F | 6-1 | Sr.
Tacoma, Wash.



1

Anamaria Virjoghe
F | 6-5 | So.
Targoviste, Romania



3

Jenn Wirth
F | 6-3 | So.
Chandler, Ariz.



4

LeeAnne Wirth
F | 6-3 | So.
Chandler, Ariz.



5

Louise Forsyth
G | 6-0 | So.
Langley, B.C.



10

Gillian Barfield
F | 6-1 | So.
Phoenix, Ariz.



11

Laura Stockton
G | 5-8 | Sr.
Spokane, Wash.



15

Jessie Loera
G | 5-6 | Jr.
Moses Lake, Wash.



24

Katie Campbell
G | 5-10 | Jr.
Oxnard, Calif.



30

Chandler Smith
G | 6-0 | RSr.
Brewster, Wash.



32

Jill Townsend
G | 5-11 | Fr.
Okanogan, Wash.



33

Melody Kempton
F | 6-1 | Fr.
Post Falls, Idaho



44

Kylee Griffen
G | 6-2 | Fr.
Marysville, Wash.



HC

Lisa Fortier
Head Coach
Fifth Season



AC

Jordan Green
Assistant Coach
Fifth Season



AC

Stacy Clinesmith
Assistant Coach
Fifth Season



AC

Craig Fortier
Assistant Coach
Fifth Season



DO

Shannon Donegan
Dir. of Basketball Ops
Second Season



VC

A'Jae Foster
Video Coordinator
First Season