

BYU VOLLEYBALL

@BYUWVOLLEYBALL



WOMEN'S VOLLEYBALL CONTACT
 Braden Taylor | braden.taylor@byu.edu
 @bradenjtaylor | 385-230-4088

HIGHEST DIVISION I WINNING PERCENTAGE IN THE LAST FIVE SEASONS (.889, 144-18) | THIRD-MOST WINS IN NCAA HISTORY (1,314)

2020-21 SCHEDULE

H 4-0 | A 3-0 | N 0-0

JANUARY

26	at Portland	W	3-0
27	at Portland	W	3-0

FEBRUARY

2	Santa Clara	PPD	
3	Santa Clara	PPD	
4	at Utah Valley	W	3-1
9	Gonzaga	W	3-1
10	Gonzaga	W	3-0
16	Loyola Marymount	W	3-0
17	Loyola Marymount	W	3-0
23	at Pepperdine	WCCN	7 p.m.
24	at Pepperdine	WCCN	7 p.m.

MARCH

5	at San Francisco	TBA	12 p.m.
6	at San Francisco	TBA	12 p.m.
12	Pacific	BYUtv	1 p.m.
13	Pacific	BYUtv	1 p.m.
19	at #18 San Diego	WCCN	1 p.m.
20	#18 San Diego	BYUtv	1 p.m.
26	at Saint Mary's	WCCN	4 p.m.
27	at Saint Mary's	WCCN	3 p.m.

APRIL

4	NCAA Tournament Selections		
---	----------------------------	--	--

All times local to site

WCC games in bold

#12 BYU

COUGARS

7-0 OVERALL 6-0 WCC

#12 BYU VS. PEPPERDINE

FEB. 23-24, 2021
 FIRESTONE FIELDHOUSE
 MALIBU, CALIFORNIA

PEPPERDINE

WAVES

6-0 OVERALL 6-0 WCC

QUICK HITS

- No. 12 BYU will face Pepperdine in a battle between undefeated teams Feb. 23-24 at the Firestone Fieldhouse in Malibu, California. The Cougars are 28-9 all-time against the Waves and have won the last 16 matches, having not lost to Pepperdine since 2011. The Waves currently sit four spots outside the AVCA Top 25.
- The Cougars remained at No. 12 in the AVCA national poll for the third week in a row. BYU has now been ranked for 111-consecutive weeks dating back to Oct. 7, 2013. Under Heather Olmstead, the Cougars have never ranked lower than No. 17 nationally.
- Last week, BYU swept LMU in consecutive matches to improve to 7-0 overall and 6-0 in WCC play. The Cougars are one of 30 undefeated teams in the NCAA Division I.
- Sophomore setter Whitney Bower currently ranks 14th in the NCAA with an average of 11.43 assists per set while sophomore opposite Kate Grimmer is 26th on the leaderboard with a .415 hitting percentage.
- As a team, BYU is 3rd in the NCAA in assists per set (14.35), 7th in hitting percentage (.329), 11th in kills per set (14.87) and 21st in aces per set (2.04).
- BYU leads the WCC in assists per set (14.35), hitting percentage (.329) and kills per set (12.87).
- Senior outside hitter Taylen Ballard-Nixon leads the league with 4.74 points per set and sophomore setter Whitney Bower leads the conference with 11.43 assists per set.
- True freshman libero Madi Allen has been named the WCC Defensive Player of the Week two times this season (Feb. 1, Feb. 15). Allen currently leads the team with 4.52 digs per set (104 total) and has recorded double-digit digs in six of the seven matches this season.
- Three Cougars were selected to the 2020-21 All-WCC Preseason Team: senior middle blocker Kennedy Eschenberg, senior outside hitter Taylen Ballard-Nixon and sophomore setter Whitney Bower. BYU was picked to finish second in the league by the WCC head coaches.
- BYU reached the second round of the NCAA Tournament last season, claiming its eighth-straight NCAA Tournament berth. The Cougars ended the season with a 26-5 overall record and finished No. 17 in the final AVCA poll.
- BYU head coach Heather Olmstead and her staff bring a .889 winning percentage (144-18) over the last five seasons, the highest of any Division I program in the nation (min. of two completed seasons). The 2018 AVCA National Coach of the Year, Olmstead is the third-fastest Division I women's volleyball coach in history to reach 100 wins, doing so in just 111 matches.

STAT COMPARISON

	BYU	W/L	PP
7-0	W/L		6-0
23	SETS		23
342	K		316
87	E		86
775	TA		815
.329	HIT%		.282
.210	OPP%		.152
14.87	K/S		13.74
330	ASTS		296
14.35	ASTS/S		12.87
47	SA		24
59	SE		62
2.04	SA/S		1.04
350	DIGS		379
15.22	DIGS/S		16.48
4	BS		11
77	BA		97
42.5	TBLK		59.5
1.85	BLK/S		2.59
431.5	PTS		399.5

LAST 5 MATCHES (5-0)

TOP OFFENSIVE PERFORMERS

	HIT%	K	E	TA	A	SA	PTS
Taylen Ballard-Nixon	.295	71	22	166	5	4	79
Whitney Bower	.472	20	3	36	197	8	31
Kate Grimmer	.448	61	9	116	2	0	65.5
Leilani Dodson	.241	34	13	87	3	6	48.5
Erin Livingston	.242	36	13	95	0	0	39.5

TOP DEFENSIVE PERFORMERS

	Digs	BS	BA	TOTB
Madi Allen	77	0	0	0
Whitney Bower	56	0	6	6
Leilani Dodson	7	2	13	15
Taylen Ballard-Nixon	35	0	8	8
Kennedy Eschenberg	1	1	8	9

LAST 7 MATCHES (7-0)

TOP OFFENSIVE PERFORMERS

	HIT%	K	E	TA	A	SA	PTS
Taylen Ballard-Nixon	.283	94	30	226	5	10	109
Whitney Bower	.426	24	4	47	263	10	37.5
Kate Grimmer	.411	79	14	158	3	0	84.5
Leilani Dodson	.241	49	17	133	4	6	64
Kennedy Eschenberg	.532	36	3	62	2	0	43

TOP DEFENSIVE PERFORMERS

	Digs	BS	BA	TOTB
Madi Allen	104	0	0	0
Whitney Bower	82	0	7	7
Leilani Dodson	12	2	14	16
Taylen Ballard-Nixon	47	0	10	10
Kennedy Eschenberg	3	2	10	12



2021 QUICK FACTS

GENERAL INFORMATION

School: Brigham Young University
 Location: Provo, Utah
 Founded: 1875
 Enrollment: 33,615
 Nickname: Cougars
 Colors: Navy Blue and White
 Conference: West Coast Conference
 President: Kevin J. Worthen
 Athletics Director: Tom Holmoe

ARENA INFORMATION

Home Court: Smith Fieldhouse
 Capacity: 5,000
 Surface: Taraflex

ATHLETIC COMMUNICATIONS

Media Relations Director Braden Taylor
 Email braden_taylor@byu.edu
 Phone 385-230-4088
 Twitter @bradenjtaylor
 Assoc. AD/Communications: Jon McBride
 Email jonathanmcbride@byu.edu
 BYU Athletics Website byucougars.com
 BYU Volleyball Twitter & Instagram @BYUWVolleyball

TEAM INFORMATION

2019 Record 26-5 (.839)
 2019 Final Ranking 17th
 2019 Postseason Finish 1-1, NCAA Second Round
 2019 WCC Record 16-2, 2nd

COACHING FAMILY TREE

Head coach Heather Olmstead comes from a family of volleyball coaches. Her father, Rick, is a well-known high school and club coach in California who coached U.S. star and current National Team head coach Karch Kiraly at Santa Barbara High.

Heather's sister, Laci, played setter for the Cougars from 1994-95.

Heather's brother, Shawn, has been the BYU men's volleyball coach the last five seasons, winning three MPSF titles. Previously, Shawn and Heather worked together on the women's team for four seasons with Shawn as the head coach, helping BYU to two conference titles and three trips to the NCAA Tournament, including a 2014 national runner-up finish.

Both Heather and Shawn have both been named AVCA National Coach of the Year as the head coaches of the BYU women's program, the only two coaches to do so in program history.

ALL-TIME GREAT COACHES

Three BYU coaches are found among the winningest in the history of NCAA women's volleyball. BYU is the only program with three coaches win an .800 or higher winning percentage.

Elaine Michaelis (886-219-5, .800) is ninth in the NCAA history in career win percentage and 10th in career victories after coaching from 1969-01. When she retired, Michaelis was second on the career victories list and first among any woman in collegiate volleyball. She is an AVCA Founders Award and USA Volleyball All-Time Great Coach honoree. The Cougars' home court is also named after her.

Shawn Olmstead (103-25, .805) is 17th in NCAA history in career win percentage among coaches with four or more seasons. The 2014 AVCA National Coach of the Year, Olmstead led BYU to its first national title game that same season. He now coaches the BYU men's volleyball team.

Heather Olmstead (151-18, .894) is the third-fastest Division I women's volleyball coach in history to reach 100 wins, doing so in just 111 matches. The 2018 AVCA National Coach of the Year, Olmstead currently holds the highest winning percentage of any women's volleyball coach in NCAA Division I history (min. two completed seasons) and second-highest in any division (min. three seasons).

WINNING STATISTICS

BYU has a number of different active winning streaks, including when the Cougars:

Stat	Wins	Last Loss
Record a higher hit %	125	LMU, 9/29/15
Record more kills	87	at Portland, 10/13/16
Record more digs	76	Utah, 9/15/16
Hit .300 or higher	57	at San Diego, 9/30/16
Outblocking opponent	27	at LMU, 11/20/18

BYU'S RECORD IN 2021 WHEN...

Overall7-0
 Conference6-0
 Nonconference1-0

Home4-0
 Away3-0
 Neutral0-0

Day3-0
 Night4-0

Playing ranked opponents0-0
 Playing unranked opponents7-0

In three sets5-0
 In four sets2-0
 In five sets0-0

Winning the first set7-0
 Winning the second set5-0
 Winning the third set7-0
 Winning the fourth set2-0

Losing the first set0-0
 Losing the second set2-0
 Losing the third set0-0
 Losing the fourth set0-0

Hitting .250 or better5-0
 Hitting .249 or worse2-0
 Opponent hitting .250 or better3-0
 Opponent hitting .249 or worse4-0

Outblocking opponent4-0
 Getting outblocked3-0

Monday0-0
 Tuesday3-0
 Wednesday3-0
 Thursday1-0
 Friday0-0
 Saturday0-0

ALPHABETICAL ROSTER

#	NAME	HT	POS	CLASS
18	Madi Allen	5-8	L	Fr.
1	Taylen Ballard-Nixon	6-3	OH	Sr.
3	Morgan Bower	5-7	L	So.
7	Whitney Bower	5-9	S	So.
11	Abbey Dayton	6-1	OH	So.
4	Leilani Dodson	6-1	OH	Fr.
24	Kennedy Eschenberg	6-5	MB	Sr.
12	Kate Grimmer	6-0	OPP	So.
16	Allie Hakes	6-4	MB	Fr.
8	Taylor Hifo	5-8	S	Jr.
13	Morgan Johnson	5-11	OH	Fr.
10	Erin Livingston	6-0	OH	Fr.
21	Whitney Llarenas	6-3	MB	Jr.
14	Makayla Tolman	6-3	OPP	Fr.
17	Grace Wee	5-5	L	So.

COACHING STAFF

Head Coach:	Heather Olmstead (Utah State '01) 6th season, 151-18 record
Associate Head Coach:	David Hyte (BYU '04)
Assistant Coach:	Jonny Neeley (BYU, '11)
Volunteer Coach:	Gil Fellingham (Occidental '71)

PRONUNCIATIONS

Bower	Bau-er
Eschenberg	Esh-en-burg
Hifo	hee-foe
Leilani	Lay-lah-nee
Llarenas	Lair-en-ess

2020-21 BRIGHAM YOUNG UNIVERSITY NUMERICAL ROSTER

#	NAME	POSITION	CLASS	HEIGHT	HOMETOWN/HIGH SCHOOL (PREVIOUS SCHOOL)
1	Taylen Ballard-Nixon	OH	Sr.	6-3	Clovis, California (Clovis HS)
3	Morgan Bower	L	So.	5-7	Nampa, Idaho (Skyview HS)
4	Leilani Dodson	OH	Fr.	6-1	La Grange, Illinois (Nazareth Academy)
7	Whitney Bower	S	So.	5-9	Nampa, Idaho (Skyview HS)
8	Taylor Hifo	S	Jr.	5-8	American Fork, Utah (American Fork HS)
10	Erin Livingston	OH	Fr.	6-0	Corona, California (Santiago HS)
11	Abbey Dayton	OH	So.	6-1	Ladera Ranch, California (San Juan Hills HS)
12	Kate Grimmer	OPP	So.	6-0	Queen Creek, Arizona (Queen Creek HS)
13	Morgan Johnson	OH	Fr.	5-11	Temecula, California (Chaparral HS)
14	Makayla Tolman	OPP	Fr.	6-3	Burley, Idaho (Burley HS)
16	Allie Hakes	MB	Fr.	6-4	Folsom, California (Folsom HS)
17	Grace Wee	L	So.	5-5	Kaneohe, Hawaii (Iolani HS)
18	Madi Allen	L	Fr.	5-8	Temecula, California (Great Oaks HS)
21	Whitney Llarenas	MB	Jr.	6-3	Bountiful, Utah (Woods Cross HS)
24	Kennedy Eschenberg	MB	Sr.	6-5	Bountiful, Utah (Bountiful HS)

BY POSITION

Libero (3)

Madi Allen	Fr.
Morgan Bower	So.
Grace Wee	So.

Middle Blocker (3)

Kennedy Eschenberg	Sr.
Allie Hakes	Fr.
Whitney Llarenas	Jr.

Opposite Hitter (2)

Kate Grimmer	So.
Makayla Tolman	Fr.

Outside Hitter (5)

Taylen Ballard-Nixon	Sr.
Abbey Dayton	So.
Leilani Dodson	Fr.
Morgan Johnson	Fr.
Erin Livingston	Fr.

Setter (2)

Whitney Bower	So.
Taylor Hifo	Jr.

BY CLASS

Senior (2)

Taylen Ballard-Nixon	OH
Kennedy Eschenberg	MB

Junior (2)

Taylor Hifo	S
Whitney Llarenas	MB

Sophomore (5)

Morgan Bower	L
Whitney Bower	S
Abbey Dayton	OH
Kate Grimmer	OPP
Grace Wee	L

Freshman (6)

Madi Allen	L
Leilani Dodson	OH
Allie Hakes	MB
Morgan Johnson	OH
Erin Livingston	OH
Makayla Tolman	OPP

BY HOMETOWN

Arizona (1)

Kate Grimmer	Queen Creek
--------------	-------------

California (6)

Madi Allen	Temecula
Taylen Ballard-Nixon	Clovis
Abbey Dayton	Ladera Ranch
Allie Hakes	Folsom
Morgan Johnson	Temecula
Erin Livingston	Corona

Hawaii (1)

Grace Wee	Kaneohe
-----------	---------

Idaho (3)

Morgan Bower	Nampa
Whitney Bower	Nampa
Makayla Tolman	Burley

Illinois (1)

Leilani Dodson	La Grange
----------------	-----------

Utah (3)

Kennedy Eschenberg	Bountiful
Taylor Hifo	American Fork
Whitney Llarenas	Bountiful



HEATHER OLMSTEAD

HEAD COACH

COACHING HISTORY

2015-present	Head Coach, BYU
2011-14	Assistant Coach, BYU
2006-10	Assistant Coach, Utah
2003-05	Assistant Coach, Utah State

PLAYING EXPERIENCE

2002-03	United States Professional Volleyball Team
1998-01	Utah State

YEAR-BY-YEAR

YEAR	RECORD	PCT.	WCC	PCT.	PLACE	NCAA
2015	28-4	.875	16-2	.889	1st	2-1
2016	29-4	.879	12-2	.889	1st	2-1
2017	30-3	.909	17-1	.944	1st	2-1
2018	31-2	.939	17-1	.944	1st	4-1
2019	26-5	.839	16-2	.889	2nd	1-1
2020-21	7-0	1.00	6-0	1.00	-	-
TOTALS	151-18	.894	88-8	.917	4 titles	11-5

OLMSTEAD CAREER HIGHLIGHTS

AS BYU HEAD COACH

- Record in six seasons of 151-18 (.894) overall and 88-8 (.917) in the WCC
- Holds the highest winning percentage of any women's volleyball coach in NCAA Division I history (min. two completed seasons) and the second-highest regardless of division (min. three seasons)
- Third-fastest coach all-time to reach 100 Division I wins (111 matches)
- AVCA National Coach of the Year (2018)
- AVCA Pacific South Region Coach of the Year (2018)
- 2-time West Coach Conference Coach of the Year (2015, 18)
- 1 NCAA Final Four finish (2018)
- 3 NCAA Sweet 16 finishes (2015, 16, 17)
- 4 West Coach Conference championships (2015, 16, 17, 18)
- Top 25 ranking ever week as head coach, including ranking No. 1 for 11-straight weeks in 2018 and no rank lower than No. 17
- 18 wins over Top 25 opponents, including 14-6 regular season record and 18-11 overall
- 13-2 record against in-state opponents
- Undefeated against five of nine WCC programs
- 1 AVCA National Freshman of the Year (Heather Gneiting)
- 1 AVCA National Player of the Year Finalist (Roni Jones-Perry)
- 16 AVCA All-America citations
- 1 Region Player of the Year
- 2 Region Freshman of the Year
- 19 All-Region citations
- 24 All-West Coast Conference citations
- 3 WCC Players of the Year
- 3 WCC Freshmen of the Year
- 4 WCC Defensive Players/Liberos of the Year
- 2 Academic All-Americans
- 8 Academic All-District citations
- 16 Academic All-WCC citations
- Top five cumulative home attendance seasons in program history and eight of the top 10 home attendance matches in program history
- Head coach of the 2019 U.S. Collegiate National Team - Japan
- Assistant coach of the gold medal-winning U.S. team at the 2015 Pan American Games

AS BYU ASSISTANT COACH

- Helped Cougars advance to the National Championship match in 2014 and two other Sweet 16 appearances in 2012 and 2013
- Helped BYU win two WCC titles (2012, 14)

BEFORE BYU

- Utah State women's volleyball assistant coach (2003-05), helping the Aggies to an NCAA Tournament appearance in 2005
- Utah women's volleyball assistant coach (2006-10)
- Helped Utah to a MWC title and two NCAA Tournament appearances, including a Sweet 16 in 2008
- Coached the Intermountain Volleyball Association High Performance team at the Global Challenge in Maribor, Slovenia (2006)
- Served as head coach of the IVA HP Select Team in Florida (2010)

PLAYING CAREER

- Started four seasons as a libero at Utah State (1998-01)
- Ranks No. 9 at USU in career digs
- Set the USU single season digs record
- Advanced to two NCAA Tournaments with a pair of Top 25 rankings
- Played for the U.S. Professional Volleyball Team (2002-03) and in the European Professional Volleyball League (2003)

OLMSTEAD VS. ALL OPPONENTS

OPPONENT	W-L	H	A	N
American	1-0	1-0	-	-
Arkansas-Pine Bluff	1-0	-	-	1-0
Baylor	0-1	-	-	0-1
Boise State	3-0	1-0	1-0	1-0
Cal Poly	1-0	1-0	-	-
Chicago State	1-0	-	-	1-0
CSUN	1-0	1-0	-	-
Duke	2-0	-	2-0	-
Florida	1-0	1-0	-	-
Gonzaga	12-0	7-0	5-0	-
Hawai'i	1-0	1-0	-	-
Idaho State	2-0	1-0	1-0	-
Kentucky	0-1	-	0-1	-
LIU	2-0	1-0	-	1-0
LMU	10-2	7-0	3-2	-
Marquette	1-1	0-1	1-0	-
Missouri	2-0	-	-	2-0
Nebraska	0-1	-	-	0-1
Nevada	1-0	-	-	1-0
New Mexico State	1-0	1-0	-	-
North Carolina	1-0	-	-	1-0
Ohio	1-0	1-0	-	-
Ohio State	2-0	1-0	1-0	-
Oregon	1-0	1-0	-	-
Oregon State	2-0	2-0	-	-
Pacific	10-0	5-0	5-0	-
Pepperdine	10-0	5-0	5-0	-
Portland	11-1	5-0	6-1	-
Princeton	1-0	1-0	-	-
Purdue	1-0	-	-	1-0
Rice	1-0	1-0	-	-
Sacramento State	1-0	-	-	1-0
Saint Louis	2-0	1-0	1-0	-
Saint Mary's	10-0	5-0	5-0	-
Sam Houston State	1-0	1-0	-	-
San Diego	6-4	3-2	3-2	-
San Francisco	10-0	5-0	5-0	-
Santa Clara	9-1	5-0	4-1	-
Stanford	2-1	1-0	1-0	0-1
Stony Brook	1-0	1-0	-	-
Syracuse	1-0	-	-	1-0
Texas	2-1	1-0	1-0	0-1
UNLV	2-0	2-0	-	-
USC	1-1	-	0-1	1-0
Utah	5-2	2-2	3-0	-
Utah Valley	5-0	2-0	3-0	-
UTRGV	1-0	1-0	-	-
VCU	-	-	-	1-0
Weber State	3-0	2-0	1-0	-
West Virginia	1-0	1-0	-	-
Western Kentucky	1-0	1-0	-	-
Wichita State	2-0	1-0	1-0	-
Wyoming	1-0	-	-	1-0
Totals	151-18	79-5	58-9	14-4

Bold signifies 2020-21 opponent

MATCH-BY-MATCH STARTING LINEUPS

DATE	OPPONENT	SETTER	OPPOSITE	OUTSIDE HITTER	MIDDLE BLOCKER	MIDDLE BLOCKER	LIBERO	VARIED
1/26	at Portland	W. Bower	Grimmer	Ballard-Nixon	Eschenberg	Llarenas	Allen	Dayton
1/27	at Portland	W. Bower	Grimmer	Ballard-Nixon	Eschenberg	Llarenas	Allen	Dayton
2/4	at Utah Valley	W. Bower	Grimmer	Ballard-Nixon	Eschenberg	Llarenas	Allen	Wee
2/9	Gonzaga	W. Bower	Grimmer	Ballard-Nixon	Hakes	Llarenas	Allen	Wee
2/10	Gonzaga	W. Bower	Grimmer	Ballard-Nixon	Dodson	Llarenas	Allen	Livingston
2/16	LMU	W. Bower	Grimmer	Ballard-Nixon	Eschenberg	Dodson	Allen	Livingston
2/17	LMU	W. Bower	Grimmer	Ballard-Nixon	Eschenberg	Dodson	Allen	Livingston

MATCH-BY-MATCH TEAM STATISTICAL LEADERS

DATE	OPPONENT	KILLS	ATTEMPTS	HIT% (MIN. 10 ATT)	ASSISTS	ACES	DIGS	BLOCKS	POINTS
1/26	at Portland	Ballard-Nixon, 14	Ballard-Nixon, 28	Ballard-Nixon, 14/3/28, .393	W. Bower, 32	Ballard-Nixon, 2	W. Bower, 18	Two players, 1	Ballard-Nixon, 16.5
1/27	at Portland	Eschenberg, 11	Ballard-Nixon, 32	Eschenberg, 11/2/19, .474	W. Bower, 34	Ballard-Nixon, 4	Wee, 11	Three players, 1	Ballard-Nixon, 13.5
2/4	at Utah Valley	Ballard-Nixon, 19	Two players, 35	Livingston, 6/0/15, .400	W. Bower, 47	Dodson, 3	Allen, 21	Two players, 4	Ballard-Nixon, 21.0
2/9	Gonzaga	Ballard-Nixon, 19	Ballard-Nixon, 36	Llarenas, 7/0/10, .700	W. Bower, 43	W. Bower, 2	Two players, 18	Dodson, 6	Ballard-Nixon, 18
2/10	Gonzaga	Grimmer, 13	Ballard-Nixon, 41	Grimmer, 13/3/26, .385	W. Bower, 34	Ballard-Nixon, 2	Allen, 16	Dodson, 5	Ballard-Nixon, 15.5
2/16	LMU	Grimmer, 12	Ballard-Nixon, 21	Grimmer, 12/0/18, .667	W. Bower, 37	Hifo, 4	Allen, 9	Eschenberg, 6	Eschenberg, 13.5
2/17	LMU	Ballard-Nixon, 16	Ballard-Nixon, 33	Grimmer, 10/1/16, .562	W. Bower, 36	Hifo, 4	Allen, 13	Eschenberg, 3	Ballard-Nixon, 17



#1 TAYLEN BALLARD NIXON

6-3
SENIOR
OUTSIDE HITTER
CLOVIS, CALIFORNIA
CLOVIS HS

SEASON HIGHS

Kills: 19 at Utah Valley, 2/4/21
Attempts: 41 vs. Gonzaga, 2/10/21
Aces: 4 at Portland, 1/27/21
Assists: 2 vs. Gonzaga, 2/9/21
Digs: 13 at Utah Valley, 2/4/21
Block assists: 3 vs. Gonzaga, 2/10/21
Block solos:
Total blocks: 3 vs. Gonzaga, 2/10/21
Points: 21 at Utah Valley, 2/4/21

CAREER HIGHS

Kills: 19 at Utah Valley, 2/4/21
Attempts: 41 vs. Gonzaga, 2/10/21
Aces: 4 at Portland, 1/27/21
Assists: 2 vs. Gonzaga, 2/9/21
Digs: 13 at Utah Valley, 2/4/21
Block assists: 10 at LMU, 10/25/19
Block solos: 2 vs. Portland, 11/21/19
Total blocks: 11 at LMU, 10/25/19
Points: 29 at Stanford, 4/13/19



#3 MORGAN BOWER

5-7
SOPHOMORE
LIBERO
NAMPA, IDAHO
SKYVIEW HS

SEASON HIGHS

Kills:
Attempts:
Aces:
Assists:
Digs:
Block assists:
Block solos:
Total blocks:
Points:

CAREER HIGHS

Kills:
Attempts: 1, three times
Aces:
Assists: 2 at LMU, 10/24/19
Digs: 7 at San Francisco, 11/9/19
Block assists:
Block solos:
Total blocks:
Points:



#4 LEILANI DODSON

6-1
FRESHMAN
OUTSIDE HITTER
LA GRANGE, ILLINOIS
NAZARETH ACADEMY

SEASON HIGHS

Kills: 13 vs. Gonzaga, 2/9/21
Attempts: 29 at Utah Valley, 2/4/21
Aces: 3 at Utah Valley, 2/4/21
Assists: 2 vs. LMU, 2/17/21
Digs: 5 at Portland, 1/27/21
Block assists: 6 vs. Gonzaga, 2/9/21
Block solos: 1, two times
Total blocks: 6 vs. Gonzaga, 2/9/21
Points: 16 vs. Gonzaga, 2/9/21

CAREER HIGHS

Kills: 13 vs. Gonzaga, 2/9/21
Attempts: 29 at Utah Valley, 2/4/21
Aces: 3 at Utah Valley, 2/4/21
Assists: 2 vs. LMU, 2/17/21
Digs: 5 at Portland, 1/27/21
Block assists: 6 vs. Gonzaga, 2/9/21
Block solos: 1, two times
Total blocks: 6 vs. Gonzaga, 2/9/21
Points: 16 vs. Gonzaga, 2/9/21



#7 WHITNEY BOWER

5-9
SOPHOMORE
SETTER
NAMPA, IDAHO
SKYVIEW HS

SEASON HIGHS

Kills: 6 vs. Gonzaga, 2/9/21
Attempts: 11 vs. Gonzaga, 2/9/21
Aces: 3 vs. LMU, 2/17/21
Assists: 47 at Utah Valley, 2/4/21
Digs: 18, two times
Block assists: 2, two times
Block solos:
Total blocks: 2, two times
Points: 9 vs. Gonzaga, 2/9/21

CAREER HIGHS

Kills: 7 at Saint Mary's, 10/5/19
Attempts: 11, two times
Aces: 5, two times
Assists: 51 at Wichita State, 9/12/19
Digs: 18, three times
Block assists: 7 at Portland, 9/28/19
Block solos: 1 at Santa Clara, 11/7/19
Total blocks: 7 at Portland, 9/28/19
Points: 9.5 vs. LMU, 10/1/19



#8 TAYLER HIFO

5-8
JUNIOR
SETTER
AMERICAN FORK, UTAH
AMERICAN FORK HS

SEASON HIGHS

Kills:
Attempts:
Aces: 4, two times
Assists: 1 vs. LMU, 2/17/21
Digs: 2, three times
Block assists:
Block solos:
Total blocks:
Points: 4, two times

CAREER HIGHS

Kills:
Attempts:
Aces: 4, two times
Assists: 3 vs. West Virginia, 8/30/18
Digs: 4 at Pacific, 10/3/19
Block assists:
Block solos:
Total blocks:
Points: 4, two times



#10 ERIN LIVINGSTON

6-1
FRESHMAN
OUTSIDE HITTER
CORONA, CALIFORNIA
SANTIAGO HS

SEASON HIGHS

Kills: 12 vs. Gonzaga, 2/9/21
Attempts: 26 vs. Gonzaga, 2/9/21
Aces:
Assists:
Digs: 3 vs. Gonzaga, 2/9/21
Block assists: 3, two times
Block solos:
Total blocks: 3, two times
Points: 13.5 vs. Gonzaga, 2/9/21

CAREER HIGHS

Kills: 12 vs. Gonzaga, 2/9/21
Attempts: 26 vs. Gonzaga, 2/9/21
Aces:
Assists:
Digs: 3 vs. Gonzaga, 2/9/21
Block assists: 3 two times
Block solos:
Total blocks: 3, two times
Points: 13.5 vs. Gonzaga, 2/9/21



#11 ABBEY DAYTON

6-1
SOPHOMORE
OUTSIDE HITTER
LADERA RANCH, CALIFORNIA
SAN JUAN HILLS HS

SEASON HIGHS

Kills:
Attempts: 1 at Utah Valley, 2/4/21
Aces: 1, two times
Assists: 2, three times
Digs: 9 vs. Gonzaga, 2/10/21
Block assists:
Block solos:
Total blocks:
Points: 1, two times

CAREER HIGHS

Kills:
Attempts: 1, four times
Aces: 1, five times
Assists: 2, five times
Digs: 10 vs. Boise State, 8/30/19
Block assists:
Block solos:
Total blocks:
Points: 1, five times



#12 KATE GRIMMER

6-0
SOPHOMORE
OPPOSITE HITTER
QUEEN CREEK, ARIZONA
QUEEN CREEK HS

SEASON HIGHS

Kills: 15 at Utah Valley, 2/4/21
Attempts: 35 at Utah Valley, 2/4/21
Aces:
Assists: 1, three times
Digs: 6 vs. Gonzaga, 2/10/21
Block assists: 2, five times
Block solos:
Total blocks: 2, five times
Points: 16 at Utah Valley, 2/4/21

CAREER HIGHS

Kills: 15 at Utah Valley, 2/4/21
Attempts: 35 at Utah Valley, 2/4/21
Aces: 3 vs. Santa Clara, 10/12/19
Assists: 1, five times
Digs: 6 vs. Gonzaga, 2/10/21
Block assists: 6, two times
Block solos:
Total blocks: 6 vs. Boise State, 8/30/19
Points: 16 at Utah Valley, 2/4/21



#13 MORGAN JOHNSON

5-11
FRESHMAN
OUTSIDE
TEMECULA, CALIFORNIA
CHAPARRAL HS

SEASON HIGHS

Kills:
Attempts:
Aces:
Assists:
Digs:
Block assists:
Block solos:
Total blocks:
Points:

CAREER HIGHS

Kills:
Attempts:
Aces:
Assists:
Digs:
Block assists:
Block solos:
Total blocks:
Points:



#14 MAKAYLA TOLMAN

6-3
FRESHMAN
OPPOSITE HITTER
BURLEY, IDAHO
BURLEY HS

SEASON HIGHS

Kills:
Attempts:
Aces:
Assists:
Digs:
Block assists:
Block solos:
Total blocks:
Points:

CAREER HIGHS

Kills:
Attempts:
Aces:
Assists:
Digs:
Block assists:
Block solos:
Total blocks:
Points:



#16 ALLIE HAKES

6-4
FRESHMAN
MIDDLE BLOCKER
FOLSOM, CALIFORNIA
FOLSOM HS

SEASON HIGHS

Kills: 3 at Utah Valley, 2/4/21
Attempts: 7 at Utah Valley, 2/4/21
Aces:
Assists:
Digs: 1 vs. Gonzaga, 2/9/21
Block assists: 4 at Utah Valley, 2/4/21
Block solos:
Total blocks: 4 at Utah Valley, 2/4/21
Points: 5 at Utah Valley, 2/4/21

CAREER HIGHS

Kills: 3 at Utah Valley, 2/4/21
Attempts: 7 at Utah Valley, 2/4/21
Aces:
Assists:
Digs: 1 vs. Gonzaga, 2/9/21
Block assists: 4 at Utah Valley, 2/4/21
Block solos:
Total blocks: 4 at Utah Valley, 2/4/21
Points: 5 at Utah Valley, 2/4/21



#17 GRACE WEE

5-5
SOPHOMORE
LIBERO
KANEHOHI, HAWAII
'IOLANI HS

SEASON HIGHS

Kills: 1 at Portland 1/27/21
Attempts: 1, two times
Aces:
Assists: 1, three times
Digs: 11 at Portland 1/27/21
Block assists:
Block solos:
Total blocks:
Points: 1 at Portland 1/27/21

CAREER HIGHS

Kills: 1 at Portland 1/27/21
Attempts: 1 at Saint Mary's, 10/5/19
Aces: 2 at Saint Mary's, 10/5/19
Assists: 2 at Pacific, 10/3/19
Digs: 11 at Portland 1/27/21
Block assists:
Block solos:
Total blocks:
Points: 2 at Saint Mary's, 10/5/19



#18 MADI ALLEN

5-8
FRESHMAN
LIBERO
TEMECULA, CALIFORNIA
GREAT OAKS HS

SEASON HIGHS

Kills: 1 at Utah Valley, 2/4/21
Attempts: 1 at Utah Valley, 2/4/21
Aces: 2 at Portland 1/27/21
Assists: 13 vs. Gonzaga, 2/9/21
Digs: 21 at Utah Valley, 2/4/21
Block assists:
Block solos:
Total blocks:
Points: 2, two times

CAREER HIGHS

Kills: 1 at Utah Valley, 2/4/21
Attempts: 1 at Utah Valley, 2/4/21
Aces: 2 at Portland 1/27/21
Assists: 13 vs. Gonzaga, 2/9/21
Digs: 21 at Utah Valley, 2/4/21
Block assists:
Block solos:
Total blocks:
Points: 2, two times



#21 WHITNEY LLARENAS

6-3
JUNIOR
MIDDLE BLOCKER
BOUNTIFUL, UTAH
WOODS CROSS HS

SEASON HIGHS

Kills: 7 vs. Gonzaga, 2/9/21
Attempts: 12 at Utah Valley, 2/4/21
Aces: 1 at Portland 1/27/21
Assists: 1, two times
Digs: 2 at Portland 1/26/21
Block assists: 4, two times
Block solos:
Total blocks: 4, two times
Points: 9 vs. Gonzaga, 2/9/21

CAREER HIGHS

Kills: 7 vs. Gonzaga, 2/9/21
Attempts: 12 at Utah Valley, 2/4/21
Aces: 1 at Portland 1/27/21
Assists: 1, two times
Digs: at Portland 1/26/21
Block assists: 4, two times
Block solos:
Total blocks: 4, two times
Points: 9 vs. Gonzaga, 2/9/21



#24 KENNEDY ESCHENBERG

6-5
SENIOR
MIDDLE BLOCKER
BOUNTIFUL, UTAH
BOUNTIFUL HS

SEASON HIGHS

Kills: 11 at Portland 1/27/21
Attempts: 19 at Portland 1/27/21
Aces:
Assists: 2 at Portland 1/26/21
Digs: 3 vs. LMU, 2/17/21
Block assists: 5 vs. LMU, 2/16/21
Block solos: 1, two times
Total blocks: 6 vs. LMU, 2/16/21
Points: 13.5 vs. LMU, 2/16/21

CAREER HIGHS

Kills: 13, two times
Attempts: 24 vs. Saint Mary's, 11/4/17
Aces:
Assists: 1, 18 times
Digs: 3, two times
Block assists: 10 vs. Saint Mary's, 9/22/18
Block solos: 3 at Marquette, 9/8/18
Total blocks: 11 vs Saint Mary's, 9/22/18
Points: 15.5, two times



#1 Taylen Ballard-Nixon



#3 Morgan Bower



#4 Leilani Dodson



#7 Whitney Bower



#8 Tayler Hifo



#10 Erin Livingston



#11 Abbey Dayton



#12 Kate Grimmer



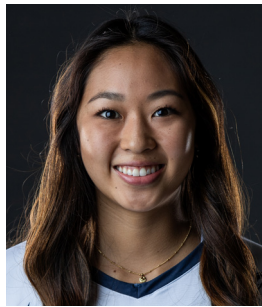
#13 Morgan Johnson



#14 Makayla Tolman



#16 Allie Hakes



#17 Grace Wee



#18 Madi Allen



#21 Whitney Llarenas



#24 Kennedy Eschenberg



Heather Olmstead



David Hyte



Jonny Neeley



**2020-21 BYU Women's Volleyball
Combined Team Statistics
All games**

Game Records

Overall	Conference	Home	Away	Neutral
7 - 0	6 - 0	4 - 0	3 - 0	0 - 0

Team Box Score

#	Player	SP	Attack					Set		Serve			Dig			Blocking					PTS	
			K	K/S	E	TA	PCT	A	A/S	SA	SE	SA/S	RE	DIG	DIG/S	BS	BA	TOT/S	BLK/S	BE		BHE
1	Ballard-Nixon, Taylen	23	94	4.09	30	226	.283	5	0.22	10	14	0.43	14	47	2.04	0	10	10	0.43	0	0	109.0
3	Bower, Morgan	2	0	0.00	0	0	.000	0	0.00	0	0	0.00	0	0	0.00	0	0	0	0.00	0	0	0.0
4	Dodson, Leilani	23	49	2.13	17	133	.241	4	0.17	6	11	0.26	1	12	0.52	2	14	16	0.70	0	0	64.0
7	Bower, Whitney	23	24	1.04	4	47	.426	263	11.43	10	7	0.43	1	82	3.57	0	7	7	0.30	0	1	37.5
8	Tausinga Hifo, Tayler	23	0	0.00	0	0	.000	1	0.04	12	11	0.52	0	6	0.26	0	0	0	0.00	0	0	12.0
10	Livingston, Erin	15	36	2.40	13	95	.242	0	0.00	0	0	0.00	0	8	0.53	0	7	7	0.47	1	0	39.5
11	Dayton, Abbey	23	0	0.00	0	1	.000	8	0.35	2	2	0.09	2	35	1.52	0	0	0	0.00	0	0	2.0
12	Grimmer, Kate	23	79	3.43	14	158	.411	3	0.13	0	2	0.00	2	16	0.70	0	11	11	0.48	0	0	84.5
16	Hakes, Allie	5	3	0.60	0	7	.429	0	0.00	0	0	0.00	0	1	0.20	0	4	4	0.80	0	0	5.0
17	Wee, Grace	23	1	0.04	0	2	.500	3	0.13	0	0	0.00	5	30	1.30	0	0	0	0.00	0	0	1.0
18	Allen, Madi	23	1	0.04	0	1	1.000	39	1.70	6	11	0.26	7	104	4.52	0	0	0	0.00	0	0	7.0
21	Llarenas, Whitney	17	19	1.12	6	43	.302	2	0.12	1	1	0.06	0	6	0.35	0	14	14	0.82	0	0	27.0
24	Eschenberg, Kennedy	12	36	3.00	3	62	.532	2	0.17	0	0	0.00	0	3	0.25	2	10	12	1.00	0	0	43.0
BYU		23	342	14.87	87	775	.329	330	14.35	47	59	2.04	35	350	15.22	4	77	42.5	1.85	1	1	431.5
Opponents		23	275	11.96	113	772	.210	262	11.39	35	51	1.52	47	307	13.35	2	46	25	1.09	22	10	335.0

Team statistics

	BYU	OPP
ATTACK		
Kills	342	275
Errors	87	113
Total Attacks	775	772
Attack Pct	.329	.210
Kills/Set	14.9	12
SET		
Assists	330	262
Attempts	808	814
Assist Pct	.408	.322
Assists/Set	14.3	11.4
SERVE		
Aces	47	35
Errors	59	51
Attempts	562	469
Serve Pct	.895	.891
Aces/Set	2	1.5
SERVE RECEPTIONS		
Errors	35	47
Errors/Set	1.5	2
Attempts	418	503
Reception Pct	.916	.996
DEFENSE		
Digs	350	307
Digs/Set	15.2	13.3
BLOCKING		
Block solo	4	2
Block Assist	77	46
Total Blocks	42.5	25
Blocks/Set	1.8	1.1
Block Errors	1	22
Ball handling errors	1	10
ATTENDANCE		
Total	600	260
Dates/Avg Per Date	4/150	3/87
Neutral Site #/Avg	0/0	-
Current win streak	0	-
Home win streak	0	-

Team Results

Date	Opponent	Score	Score-by-set	Att.
* 01/26/2021	at Portland	W 3-0	25-9,25-22,25-17	0
* 01/27/2021	at Portland	W 3-0	25-23,26-24,25-22	0
02/04/2021	at Utah Valley	W 3-1	25-17,22-25,25-20,25-20	260
* 02/09/2021	Gonzaga	W 3-1	25-17,23-25,25-12,25-17	150
* 02/10/2021	Gonzaga	W 3-0	25-19,25-22,25-22	150
* 02/16/2021	LMU (CA)	W 3-0	25-21,25-20,25-19	150
* 02/17/2021	LMU (CA)	W 3-0	25-17,27-25,25-23	150



Volleyball Box Score
2021 Portland Women's Volleyball
#16 BYU vs Portland (Jan 26, 2021 at Portland, Ore.)

#	BYU	S	Attack				Pct	Ast	Serve			Block				Pts
			K	E	TA	Pct			SA	SE	RE	Dig	BS	BA	BE	
1	Ballard-Nixon,Taylen	3	14	3	28	.393	0	2	2	0	7	0	1	0	0	-
7	Bower,Whitney	3	4	1	8	.375	32	1	0	18	0	0	0	0	0	-
11	Dayton,Abbey	3	0	0	0	.000	1	1	1	0	5	0	0	0	0	-
12	Grimmer,Kate	3	10	2	23	.348	1	0	0	1	0	0	0	0	0	-
21	Llarenas,Whitney	3	1	0	4	.250	0	0	0	2	0	2	0	0	0	-
24	Eschenberg,Kennedy	3	6	0	9	.667	2	0	0	0	1	0	0	0	0	-
4	Dodson,Lailani	3	9	2	22	.318	1	0	1	0	0	1	0	0	0	-
8	Tausinga Hifo,Taylor	3	0	0	0	.000	0	2	0	0	0	0	0	0	0	-
17	Wee,Grace	3	0	0	1	.000	1	0	0	3	0	0	0	0	0	-
18	Allen,Madi	3	0	0	0	.000	6	1	1	2	17	0	0	0	0	-
Team																
Totals		3	44	8	95	.379	44	5	7	5	53	1	4	0	0	-

Team Attack By Set

Set	K	E	TA	Pct
1	13	0	26	.500
2	13	5	34	.235
3	18	3	35	.429

SET SCORES
 BYU (3) 25 25 25 1-0
 Portland (0) 9 22 17 0-1

TOTAL TEAM BLOCKS: 3.0

Volleyball Box Score
2020-21 Portland Volleyball
#16 BYU vs Portland (Jan 27, 2021 at Portland, Ore.)

#	BYU	S	Attack				Pct	Ast	Serve			Block				Pts
			K	E	TA	Pct			SA	SE	RE	Dig	BS	BA	BE	
1	Ballard-Nixon,Taylen	3	9	5	32	.125	0	4	3	2	5	0	1	0	0	13.5
7	Bower,Whitney	3	0	0	3	.000	34	1	0	0	8	0	1	0	1	1.5
11	Dayton,Abbey	3	0	0	0	.000	0	0	0	3	0	0	0	0	0	0.0
12	Grimmer,Kate	3	8	3	19	.263	0	0	0	1	0	2	0	0	0	9.0
21	Llarenas,Whitney	3	4	1	8	.375	0	1	1	0	1	0	2	0	0	6.0
24	Eschenberg,Kennedy	3	11	2	19	.474	0	0	0	0	0	2	0	0	0	12.0
4	Dodson,Lailani	3	6	2	24	.167	0	2	0	5	0	0	0	0	0	6.0
8	Tausinga Hifo,Taylor	3	0	0	0	.000	0	1	1	0	0	0	0	0	0	1.0
17	Wee,Grace	3	1	0	1	.000	1	0	0	11	0	0	0	0	0	1.0
18	Allen,Madi	3	0	0	0	.000	3	2	2	1	10	0	0	0	0	2.0
Totals		3	39	13	106	.245	38	9	9	3	44	0	8	0	1	52.0

Team Attack By Set

Set	K	E	TA	Pct
1	14	4	28	.357
2	11	4	34	.206
3	14	5	44	.205

SET SCORES
 BYU (3) 25 26 25 2-0, 2-0 WCC
 Portland (0) 23 24 22 0-2, 0-2 WCC

TOTAL TEAM BLOCKS: 4.0

#	Portland	S	Attack				Pct	Ast	Serve			Block				Pts
			K	E	TA	Pct			SA	SE	RE	Dig	BS	BA	BE	
1	HARRIS, Jayde	3	9	3	22	.273	0	1	1	0	5	0	0	0	0	-
3	BRAY, Nevaeh	3	2	1	9	.111	0	0	1	0	0	0	2	0	0	-
7	WESLEY, Mia	3	8	5	29	.103	0	4	0	5	7	0	0	1	0	-
8	REICH, Liz	3	3	5	22	-.091	0	0	0	0	1	0	1	1	0	-
10	HUGHES, Kellie	3	0	0	0	.000	11	0	2	0	5	0	0	2	0	-
11	HARMON, Chelsea	3	1	1	5	.000	0	0	0	2	0	0	0	0	0	-
1	LAWSON, Jiana	3	5	2	15	.200	0	0	0	0	0	1	0	0	0	-
5	HELM, Noelani	3	0	0	0	.000	14	0	1	0	3	0	0	0	1	-
6	ZILBERT, Grace	3	0	0	0	.000	0	0	0	0	0	0	0	0	0	-
16	WILLIAMS, Carey	3	0	0	0	.000	2	0	1	0	14	0	0	0	1	-
Totals		3	28	17	102	.108	27	5	6	5	40	0	4	4	1	-

Team Attack By Set

Set	K	E	TA	Pct
1	5	6	29	-.034
2	14	5	35	.257
3	9	6	38	.079

SET SCORES
 Site: Portland, Ore. (Chiles Center)
 Date: Jan 26, 2021 Attend: Time: 1:32
 Referees: Marcia Costley, Paula Martin
 Line judges: Gregory Clark, Thomas Hurst

TOTAL TEAM BLOCKS: 2.0

#	Portland	S	Attack				Pct	Ast	Serve			Block				Pts
			K	E	TA	Pct			SA	SE	RE	Dig	BS	BA	BE	
1	HARRIS, Jayde	3	10	4	31	.194	0	0	0	0	1	0	0	0	0	10.0
3	BRAY, Nevaeh	3	4	1	7	.429	0	0	3	0	1	0	2	0	1	5.0
7	WESLEY, Mia	3	17	4	30	.433	0	0	1	6	7	0	1	1	0	17.5
8	REICH, Liz	3	5	1	14	.286	0	0	0	0	0	0	1	0	1	5.0
10	HUGHES, Kellie	3	0	0	0	.000	18	0	0	0	5	0	0	0	0	0.0
11	HARMON, Chelsea	3	2	0	3	.667	0	1	2	0	4	1	3	0	0	5.5
1	LAWSON, Jiana	3	5	1	16	.250	0	1	0	0	0	4	1	0	0	8.0
5	HELM, Noelani	3	0	1	1	-.000	19	0	1	0	3	0	0	0	4	0.0
6	ZILBERT, Grace	3	0	0	0	.000	1	1	0	0	6	0	0	0	0	1.0
16	WILLIAMS, Carey	3	0	0	0	.000	2	0	3	3	23	0	0	0	0	0.0
Totals		3	43	12	102	.304	40	3	10	9	50	1	10	3	5	52.0

Team Attack By Set

Set	K	E	TA	Pct
1	12	3	25	.360
2	16	6	33	.303
3	15	3	44	.273

SET SCORES
 Site: Portland, Ore. (Chiles Center)
 Date: Jan 27, 2021 Attend: Time: 1:49
 Referees: Paula Martin, Marcia Costley
 Line judges: Alicia Provost, Thomas Hurst

TOTAL TEAM BLOCKS: 6.0

Tie scores
 1 2 3 Total
 9 8 9 26
Lead change
 4 6 4 14

Volleyball Box Score
2020-21 Women's Volleyball
#14 BYU vs Utah Valley (02/04/2021 at Lockhart Arena)

#	#14 BYU	S	Attack				Pct	Ast	Serve			Block				Pts
			K	E	TA	Pct			SA	SE	RE	Dig	BS	BA	BE	
1	Ballard-Nixon, Taylen	4	19	6	35	.371	1	2	5	0	12	1	0	0	21.0	
4	Dodson, Lailani	4	8	5	29	.103	2	0	3	1	23	9	1	2	13.0	
7	Bower, Whitney	4	4	1	8	.500	47	1	0	6	4	4	2	2	7.0	
8	Tausinga Hifo, Taylor	4	1	1	3	.333	2	1	1	9	9	0	0	0	9.0	
10	Livingston, Erin	4	6	1	15	.400	1	0	0	0	0	0	0	0	6.0	
11	Dayton, Abbey	4	1	1	1	.000	2	6	3	3	16	1	3	4	0.0	
12	Grimmer, Kate	4	15	3	35	.343	1	1	0	0	5	1	0	2	16.0	
16	Hakes, Allie	4	3	7	7	.429	1	0	0	0	0	0	4	5	0.0	
17	Wee, Grace	4	1	0	1	.000	1	3	3	3	13	2	8	3	0.0	
18	Allen, Madi	4	1	1	1	.000	6	2	0	30	15	3	8	21	2.0	
21	Llarenas, Whitney	4	4	3	12	.083	1	4	2	5	15	10	0	1	4	6.0
TEAM																
Totals		4	60	17	143	.301	58	1	46	39	70	7	9	16	78.0	

Attack By Set

Set	K	E	TA	Pct	Sidout	Pct
1	16	2	27	.519	11-18	61%
2	17	9	48	.354	12-24	50%
3	15	4	38	.395	11-21	52%
4	12	2	30	.400	13-20	60%

SET SCORES
 #14 BYU 1 2 3 4
 Utah Valley (1) 17 25 20 20 2-1, 2-0

TOTAL TEAM BLOCKS: 9.0

#	Utah Valley	S	Attack				Pct	Ast	Serve			Block				Pts
			K	E	TA	Pct			SA	SE	RE	Dig	BS	BA	BE	
1	Sedrick, Ke'liani	4	1	1	1	.000	1	1	0	0	0	0	0	0	0.0	
2	Dorius, Tori	4	14	5	33	.273	1	0	0	1	5	1	0	0	17.0	
4	Miller, Abbie	4	2	4	5	.000	17	2	6	24	2	1	4	9	4.0	
6	Jardine, Seren	4	1	1	1	.000	3	11	2	13	8	3	5	8	1.0	
8	Vincent, Abbie	4	1	1	1	.000	1	1	0	0	0	0	0	0	0.0	
9	Tanusava, Kazna	4	18	4	36	.389	1	0	0	1	3	8	2	6	16.0	
11	Hanson, Sadie	4	2	2	8	.250	1	0	0	4						

Volleyball Box Score
2020-21 BYU Women's Volleyball
 Gonzaga vs BYU (02/10/2021 at Smith Fieldhouse)

Volleyball Box Score
2020-21 Women's Volleyball
 LMU (CA) vs BYU (02/16/2021 at Smith Fieldhouse)

#	Gonzaga	S	Attack			Set			Serve			Reception			Block			Pts					
			K	E	TA	Pct	Ass	Err	TA	Pct	SA	SE	TA	Pct	O	RE	Pct		Dig	BS	BA	BE	BHE
1	Andaya, Tia	■	2	5	400	26	3	92	283	3	9	667	0	0	0	0	0	0	1	1	1	2.5	
2	Kim, Alisa	□	3	1	1000	1	1	1000	2	2	14	857	0	0	0	0	0	0	0	0	0	2.0	
3	Thiros, Zoe	■	3	3	13	154	0	0	0	1	3	667	5	0	0	0	0	0	3	0	0	3.0	
4	Hughes, Alyssa	■	3	5	2	11	273	0	0	0	0	0	0	0	0	0	0	0	3	1	1	6.5	
5	Croft, Kennedy	■	3	11	2	19	474	4	0	0	2	11	816	8	0	0	0	0	14	0	0	11.0	
6	Rudel, Gretchen	□	3	0	0	0	0	0	0	0	2	6	667	1	0	0	0	0	4	0	0	1.0	
7	Penner, Sarah	■	3	6	4	30	667	1	0	0	2	13	1000	33	2	943	4	0	3	1	0	9.5	
10	Oppio, Katelyn	□	1	0	0	0	0	0	0	0	0	0	0	0	0	0	0	0	0	0	0	0.0	
11	Gray, Chapin	□	2	5	4	18	556	0	0	0	0	0	0	0	0	0	0	0	0	0	5.5		
15	Russell, Juliette	■	3	2	2	11	000	0	0	0	1	2	500	1	0	0	0	0	0	0	0	3.0	
20	Talarico, Julia	L L L	3	0	0	0	0	0	0	0	1	7	857	14	0	1000	14	0	0	0	0	0.0	
TEAM			1	0	0	0	0	0	0	0	0	0	0	0	0	0	0	0	0	0	0	0.0	
Totals			3	34	15	107	178	32	3	114	281	4	12	65	815	64	3	955	48	10	6	2	43.0

Attack By Set			TOTAL TEAM BLOCKS			
Set	K	E	TA	Pct	Sidout	Pct
1	11	5	39	154	12-24	50%
2	12	6	34	176	15-25	60%
3	11	4	34	206	13-24	54%

SET SCORES			Team records:		
1	2	3	Gonzaga	BYU	
1	2	3	(0)	19	22
2	2	2	(3)	25	25
3	2	2			

#	BYU	S	Attack			Set			Serve			Reception			Block			Pts					
			K	E	TA	Pct	Ass	Err	TA	Pct	SA	SE	TA	Pct	O	RE	Pct		Dig	BS	BA	BE	BHE
1	Ballard-Nixon, Taylen	■	3	12	6	41	146	0	0	0	2	3	12	750	14	2	875	3	0	0	0	15.5	
4	Dodson, Leilani	■	3	5	2	13	231	0	0	0	0	7	1000	1	0	0	0	0	1	4	0	8.0	
7	Bower, Whitney	■	3	1	1	7	000	34	1	96	395	0	0	0	0	0	0	0	0	0	0	1.5	
8	Tausinga Hifo, Tayler	□	3	0	0	0	0	0	0	0	1	18	1000	0	0	0	0	0	0	0	0	1.0	
10	Livingston, Erin	■	3	6	4	19	105	0	0	0	0	0	0	0	0	0	0	0	0	0	0	6.0	
11	Dayton, Abbey	□	3	0	0	0	0	0	0	0	1	3	667	9	0	1000	9	0	0	0	0.0		
12	Grimmer, Kate	■	3	13	3	26	385	1	0	0	0	7	1000	4	0	1000	6	0	2	0	0	14.0	
17	Wee, Grace	□	3	0	0	0	0	0	0	0	0	0	0	0	0	0	0	0	0	0	0	0.0	
18	Allen, Madi	L L L	3	0	0	0	0	0	0	0	2	14	857	10	1	900	16	0	0	0	0	0.0	
21	Llarenas, Whitney	■	3	2	9	0	0	0	0	0	0	0	0	0	0	0	0	0	0	0	0	4.0	
TEAM			1	0	0	0	0	0	0	0	0	0	0	0	0	0	0	0	0	0	0	0.0	
Totals			3	40	18	115	191	37	1	113	327	3	6	73	918	49	4	925	52	1	12	0	50.0

Attack By Set			TOTAL TEAM BLOCKS			
Set	K	E	TA	Pct	Sidout	Pct
1	13	3	38	263	13-20	65%
2	15	8	39	170	15-22	68%
3	12	7	38	132	14-23	60%

SET SCORES			Team records:		
1	2	3	LMU (CA)	BYU	
1	2	3	(0)	17	25
2	2	2	(3)	25	27
3	2	2			

Tie Scores			Lead changes		
1	2	3	Total		
9	12	3	24		
5	1	2	8		

#	LMU (CA)	S	Attack			Set			Serve			Reception			Block			Pts					
			K	E	TA	Pct	Ass	Err	TA	Pct	SA	SE	TA	Pct	O	RE	Pct		Dig	BS	BA	BE	BHE
4	Bareford, Isabella	■	3	1	1	5	000	35	1	76	461	1	2	13	846	0	0	0	0	0	0	2.0	
7	Geissberger, Kari	■	3	14	4	29	345	0	0	0	0	0	0	0	0	0	0	0	0	0	0	14.0	
8	Bartley, Sierra	■	3	4	1	10	300	0	0	0	0	0	0	0	0	0	0	0	0	0	0	4.0	
11	Shroll, Mary	L L L	3	0	0	0	0	0	0	0	0	0	0	0	0	0	0	0	0	0	0	0.0	
13	Booth, Rose	■	3	7	8	25	000	0	0	0	0	3	000	1	0	11	1000	20	3	870	6	8.0	
15	Boehle, Ella	□	3	0	0	0	0	0	0	0	0	0	0	0	0	0	0	0	0	0	0	0.0	
17	Walters, Emmelyn	■	3	6	1	8	625	0	0	0	0	0	0	0	0	0	0	0	0	0	0	6.0	
22	Klemp, Audrey	□	3	8	1	14	500	0	0	0	0	0	0	0	0	0	0	0	0	0	0	8.0	
28	Pirrotta, Annabella	□	3	0	0	0	0	0	0	0	0	0	0	0	0	0	0	0	0	0	0	1.0	
TEAM			1	0	0	0	0	0	0	0	0	0	0	0	0	0	0	0	0	0	0	0.0	
Totals			3	40	16	91	264	40	1	96	417	3	4	62	935	56	8	875	32	0	4	1	43.0

Attack By Set			TOTAL TEAM BLOCKS			
Set	K	E	TA	Pct	Sidout	Pct
1	13	4	30	300	12-24	50%
2	13	7	27	222	15-25	60%
3	14	5	34	265	14-24	58%

SET SCORES			Team records:		
1	2	3	LMU (CA)	BYU	
1	2	3	(0)	21	20
1	2	2	(3)	25	25
1	2	2			

#	BYU	S	Attack			Set			Serve			Reception			Block			Pts					
			K	E	TA	Pct	Ass	Err	TA	Pct	SA	SE	TA	Pct	O	RE	Pct		Dig	BS	BA	BE	BHE
1	Ballard-Nixon, Taylen	■	3	7	4	21	143	1	0	0	2	500	1	1	10	900	16	1	941	8	0	7.5	
4	Dodson, Leilani	■	3	6	1	10	500	0	0	0	0	0	0	0	0	0	0	0	0	0	0	7.5	
7	Bower, Whitney	■	3	4	4	1000	37	70	529	1	2	13	846	0	0	0	0	0	0	0	0	5.5	
8	Tausinga Hifo, Tayler	□	3	0	0	0	0	0	0	0	0	0	0	0	0	0	0	0	0	0	0	4.0	
10	Livingston, Erin	■	3	6	2	20	200	0	0	0	0	0	0	0	0	0	0	0	0	0	0	7.5	
11	Dayton, Abbey	□	3	0	0	0	0	0	0	0	0	0	0	0	0	0	0	0	0	0	0	1.0	
12	Grimmer, Kate	■	3	12	18	667	0	0	0	0	0	0	0	0	0	0	0	0	0	0	0	13.0	
17	Wee, Grace	□	3	0	0	0	0	0	0	0	0	0	0	0	0	0	0	0	0	0	0	0.0	
18	Allen, Madi	L L L	3	0	0	0	0	0	0	0	0	0	0	0	0	0	0	0	0	0	0	0.0	
24	Eschenberg, Kennedy	■	3	10	1	16	562	0	0	0	0	2	000	0	0	0	0	0	0	0	0	13.5	
TEAM			1	0	0	0	0	0	0	0	0	0	0	0	0	0	0	0	0	0	0	0.0	
Totals			3	45	8	89	416	42	96	438	6	9	73	877	55	3	948	31	1	13	0	0	60.5

Attack By Set			TOTAL TEAM BLOCKS			
Set	K	E	TA	Pct	Sidout	Pct
1	13	4	30	379	13-22	59%
2	14	3	28	393	15-20	75%
3	18	3	32	469	15-20	75%

SET SCORES			Team records:		
1	2	3			