

UTAH STATE



WOMEN'S BASKETBALL

2020-21 SCHEDULE

1-1 Overall, 0-0 MW

1-0 Home / 0-1 Away / 0-0 Neutral

November (1-1)

25 **MONTANA** W, 81-74
28 at Idaho State L, 61-85

December (0-0)

3 at Seattle 2 p.m.
7 **BYU** 6 p.m.
13 **UTEP** 2 p.m.
21 at San José State* TBA
23 at San José State* TBA
31 **AIR FORCE*** TBA

January (0-0)

2 **AIR FORCE*** TBA
7 **NEW MEXICO*** TBA
9 **NEW MEXICO*** TBA
14 at San Diego State* TBA
16 at San Diego State* TBA
20 at Colorado State* TBA
22 at Colorado State* TBA
25 **UNLV*** TBA
27 **UNLV*** TBA

February (0-0)

4 **FRESNO STATE*** TBA
6 **FRESNO STATE*** TBA
11 at Wyoming* TBA
13 at Wyoming* TBA
18 **BOISE STATE*** TBA
20 **BOISE STATE*** TBA
25 at Nevada* TBA
27 at Nevada* TBA

2020-21 Mountain West Championship Las Vegas, Nev.

March 7 First Round TBA
March 8 Quarterfinals TBA
March 9 Semifinals TBA
March 10 Finals TBA

* Mountain West game
Home games in **BOLD CAPS**
All times Mountain

FOLLOW THE AGGIES



/USUWBB @USUWBasketball @USUWBasketball

GAME THREE



1-1 Overall
0-0 MW

Utah State at Seattle
Thursday, December 3
2 p.m. (MT)
Redhawk Center
Seattle, Wash.



0-2 Overall
0-0 WAC

WAC Digital Network | 92.3 KBLU |
stats.statbroadcast.com/statmonitr/?id=320532

TEAM INFORMATION

Location..... Seattle, Wash.
Enrollment..... 7,291
Conference..... WAC
2020-21 Record..... 0-2
2019-20 Record..... 13-16, 6-9 WAC
Head Coach..... Suzy Barcomb
School Record/Years..... 49-76 (4)
Career Record/Years..... 345-183 (22)

THE SERIES

All-Time..... Series tied, 2-2
First Meeting..... 1/3/80
In Logan..... 2-0
In Seattle..... 0-1
Neutral..... 0-1
Current Win Streak..... USU W2
Last Meeting..... 11/9/19

GAME FOUR



1-1 Overall
0-0 WCC

BYU at Utah State
Monday, December 7
6 p.m. (MT)
Dee Glen Smith Spectrum
Logan, Utah



1-1 Overall
0-0 MW

MWN | 92.3 KBLU |
utahstateaggies.com/sidearmstats/wbball/media

TEAM INFORMATION

Location..... Provo, Utah
Enrollment..... 33,633
Conference..... West Coast
2020-21 Record..... 1-1
2019-20 Record..... 18-11, 13-5 WCC
Head Coach..... Jeff Judkins
School Record/Years..... 411-194 (19)
Career Record/Years..... Same

THE SERIES

All-Time..... BYU leads, 37-4
First Meeting..... 1/8/74
In Logan..... 2-16
In Provo..... 2-18
Neutral..... 0-3
Current Win Streak..... BYU W2
Last Meeting..... 11/26/19

AGGIE TIP-OFF

Utah State women's basketball (1-1, 0-0 MW) continues its 2020-21 campaign with a pair of games this week as the Aggies take on Seattle (0-2, 0-0 WAC) on Thursday, Dec. 3, at 2 p.m., at the Redhawk Center in Seattle, Wash., then return home to host BYU (1-1, 0-0 WCC) on Monday, Dec. 7, inside the Dee Glen Smith Spectrum.

HOW TO FOLLOW

Radio coverage for both of this week's games will be provided by 92.3 KBLU-LP with **Jaden Johnson** on the call. Thursday's game will be broadcast by the WAC Digital Network, while Monday's contest can be seen on The Mountain West Network. Live stats and play-by-play information will be available through Statbroadcast for Thursday's game and Sidearm for Monday's contest. Links to each option will be available online prior to the game.

Media Relations Contact: Jaden Johnson

Office: (435) 797-8584

Cell: (435) 754-4409

Email: jaden.johnson@usu.edu

utahstateaggies.com

2020-21 ROSTER

UTAH STATE AGGIES

No.	Name	Pos.	Ht.	Yr.	Exp.	Hometown (High School/Last School)
0	Faith Brantley	G	5-7	So.	1L	Tacoma, Wash. (Garfield HS)
1	Kamalu Kamakawiwo'ole	G	5-11	So.	1L	Honolulu, Hawaii (Kalani HS)
2	Meagan Mendazona	G	5-9	Fr.	HS	Monmouth, Ore. (Central HS)
3	Elli Emrich	G	5-11	So.	1L	Bonn, Germany (Schloss Hagerhof)
4	Jessica Chatman	F	6-0	Gr.	TR	Ridgefield, Wash. (Union HS / BYU / Southern Utah)
5	Kinley Falslev	G	5-8	Fr.	FR	Benson, Utah (Green Canyon HS)
10	Emmie Harris	G	5-10	Sr.	3L	Danville, Ky. (Boyle County HS)
11	Amit Lustgarten	G	5-5	Fr.	HS	Salt Lake City, Utah (Skyline HS)
13	Paris Williams	G	5-8	Jr.	TR	St. Petersburg, Fla. (Lakewood High School / Daytona State College)
14	Monique Pruitt	G/F	5-9	Jr.	TR	Chicago, Ill. (Montverde Academy / Miami Dade College / Wabash Valley College)
22	Jocelyn Polansky	G	5-10	So.	1L	Wallingford, Conn. (Choate Rosemary Hall)
23	Shyla Latone	G	5-4	R-So.	RS	San Diego, Calif. (Bonita Vista HS / Cleveland State)
24	Bre Matthews	F	6-0	Jr.	TR	Garland, Texas (Lakeview Centennial HS / New Mexico / Ranger College)
25	Halle Nelson	G/F	6-1	Fr.	HS	American Fork, Utah (American Fork HS)
42	Taylor Franson	F	6-1	Jr.	2L	American Fork, Utah (American Fork HS)
44	Emily Jarrell	F	6-2	Fr.	HS	Sanford, Fla. (Seminole HS)

Coaching Staff

Head Coach: Kayla Ard (Southeastern Louisiana University, '10), First Year

Assistant Coach/Recruiting Coordinator: Karlie Burris (Portland, '09), First Year

Assistant Coaches: Jeanne Kenney (LSU, '14), First Year

Jauwan Scaife (Ball State, '12), First Year

Director of Operations: Taylor Ignoto (Washburn, '15), First Ye

PRONUNCIATIONS

Elli Emrich = Em-rick

Kinley Falslev = False-lev

Kamalu Kamakawiwo'ole = Kuh-mall-oooh Kuh-maw-kuh-vee-voe-olay

Shyla Latone = Shy-luh Luh-tone

Amit Lustgarten = Uhh-meet Lust-garden

Meagan Mendazona = Mend-uh-zone-uh

Jocelyn Polansky = Puh-lan-ski

Kayla Ard = Rhymes with 'hard'

Jauwan Scaife = Juh-wahn Skay-f

Jeanne Kenney = Pronounced like genre without the 're'

Taylor Ignoto = Ig-no-toe

POSITION BREAKDOWN

Forwards (4) – Jessica Chatman, Bre Matthews, Taylor Franson, Emily Jarrell

Guard/Forwards (2) – Monique Pruitt, Halle Nelson

Guards (10) – Faith Brantley, Kamalu Kamakawiwo'ole, Meagan Mendazona, Elli Emrich, Kinley Falslev, Emmie Harris, Amit Lustgarten, Paris Williams, Jocelyn Polansky, Shyla Latone

HEIGHT BREAKDOWN

6-1 (1) – Emily Jarrell

6-1 (2) – Taylor Franson, Halle Nelson

6-0 (2) – Jessica Chatman, Bre Matthews

5-11 (2) – Kamalu Kamakawiwo'ole, Elli Emrich

5-10 (2) – Emmie Harris, Jocelyn Polansky

5-9 (2) – Meagan Mendazona, Monique Pruitt

5-8 (2) – Kinley Falslev, Paris Williams

5-7 (1) – Faith Brantley

5-5 (1) – Amit Lustgarten

5-4 (1) – Shyla Latone

CLASS BREAKDOWN

Graduate Student (1) – Jessica Chatman

Senior (1) – Emmie Harris

Juniors (4) – Taylor Franson, Bre Matthews, Monique Pruitt, Paris Williams

Sophomores (5) – Shyla Latone, Faith Brantley, Elli Emrich, Kamalu Kamakawiwo'ole, Jocelyn Polansky

Freshmen (5) – Kinley Falslev, Emily Jarrell, Amit Lustgarten, Meagan Mendazona, Halle Nelson

PROJECTED STARTERS



10 Emmie Harris

G - 5-10 - Sr.
Danville, Ky.
11.0 ppg - 7.5 rpg - 3.0 apg
.263 FG% - .000 3FG% - .923 FT%



25 Halle Nelson

G/F - 6-1 - Fr.
American Fork, Utah
3.0 ppg - 5.0 rpg - 0.0 apg
.375 FG% - .000 3FG% - .000 FT%



0 Faith Brantley

G - 5-7 - So.
Tacoma, Wash.
8.0 ppg - 3.5 rpg - 3.0 apg
.500 FG% - .429 3FG% - .750 FT%



2 Meagan Mendazona

G - 5-9 - Fr.
Monmouth, Ore.
17.0 ppg - 6.5 rpg - 2.5 apg
.565 FG% - .600 3FG% - .833 FT%



4 Jessica Chatman

F - 6-0 - Gr.
Ridgefield, Wash.
12.0 ppg - 7.0 rpg - 1.0 apg
.563 FG% - .667 3FG% - .500 FT%

USU BENCH

#	Name	Yr.	Pos.	Ht.	ppg.	rpg.	FG%	3FG%	FT%
1	Kamalu Kamakawiwo'ole	So.	G	5-11	1.0	1.5	.167	.000	--
3	Elli Emrich	So.	G	5-11	4.0	1.0	.667	--	.000
5	Kinley Falslev	Fr.	G	5-8	1.5	0.0	.250	.333	--
11	Amit Lustgarten	Fr.	G	5-5	0.0	0.0	--	--	--
13	Paris Williams	Jr.	G	5-8	1.0	0.5	.143	.000	--
14	Monique Pruitt	Jr.	G/F	5-9	5.5	2.5	.286	.333	1.000
22	Jocelyn Polansky	So.	G	5-10	--	--	--	--	--
23	Shyla Latone	RS-So.	G	5-4	1.5	1.0	.167	.200	--
24	Bre Matthews	Jr.	F	6-0	--	--	--	--	--
42	Taylor Franson	Jr.	F	6-1	5.5	2.0	.667	--	.600
44	Emily Jarrell	Fr.	F	6-2	--	--	--	--	--

KAYLA ARD – HEAD COACH



Southeastern Louisiana University, '10
First Year
Utah State Record: 1-1
Career Record: 1-1

Kayla Ard (rhymes with hard) has been named Utah State University's ninth head women's basketball coach in its 32 seasons after being hired on March 23, 2020.

Ard brings 10 years of collegiate experience with her to Utah State, serving as an assistant coach and recruiting coordinator at Denver, Dayton, Clemson, Troy and Pensacola State. In all, she has coached one WNBA draft pick and 17 players that have played professionally overseas.

Known for her strong recruiting, Ard immediately made her mark at Denver as the Pioneers signed the top-ranked recruiting class in the Summit League in her first season, according to ASGR Basketball. Ard also helped Dayton sign the 19th ranked recruiting class in the nation in 2016, according to ESPN. While at Clemson, the Tigers signed six of the top 43 recruits in the nation at their position, per ESPN. During her time at Troy, the Trojans signed four NJCAA All-Americans and five of the top 31 recruits in the nation at their position, per ESPN. And at Pensacola State, Ard helped recruit and coach eight All-Americans.

Ard comes to Utah State after spending the past three seasons as the associate head coach, recruiting coordinator and offensive coordinator at the University of Denver under Jim Turgeon, as she helped the Pioneers to three-straight non-losing seasons with a 49-43 (.533) overall record and a 26-20 (.565) mark in the Summit League. Prior to Ard's arrival at DU, the Pioneers had suffered through five-straight losing seasons, which included single-digit wins in each of their previous four years.

During the 2019-20 season, Ard spent the last 11 games as the team's interim head coach, leading the Pioneers to a 7-4 record and a third-seed in the Summit League Championships. As interim head coach, Ard led DU to its first road win of the season with a 91-81 win at North Dakota and six straight wins to end the regular season, which included a 72-62 victory at South Dakota State, a program that advanced to the Sweet 16 of the NCAA Tournament a year ago. That six-game winning streak for Denver was its longest in eight years, while its win at SDSU was its first since 2015.

Denver finished the 2019-20 season by setting a school record with a free throw percentage of 77.1, while posting the fourth-highest scoring average in program history at 77.6 points per game. In fact, its 2,328 points this past season are the second-most in school history as the Pioneers went 15-15 overall, including a 9-7 record in league play.

Individually, Ard helped Madison Nelson earn first-team all-Summit League honors as she set program records for single-season points (592), rebounds (343) and scoring average (19.7). Nelson also became the first player in Denver's Division I era to average a double-double with 19.7 points and 11.4 rebounds per game.

Ard also mentored Lauren Loven to second-team all-Summit League honors this past season as she finished her career second in conference history with 341 made 3-pointers and 832 3-point attempts, and eighth all-time in scoring with 1,453 points.

In Ard's third and final season at Denver, the Pioneers finished third in the nation in free throws made (504), 14th in free throw attempts (654), 18th in scoring offense (77.6) and 19th in free throw percentage (77.1). In league play, DU was first in free throw percentage (77.1), first in free throws made (504), first in total rebounds (1,264), first in rebounds per game (42.1), second in scoring offense (77.6), second in steals per game (9.3), second in free throw attempts (654), third in 3-pointers made per game (7.2) and third in 3-point percentage (33.7).

During the 2018-19 season, Denver posted an 18-14 overall record and a 10-6 mark in the Summit League, its most overall and league wins in seven seasons. DU also advanced to the Women's National Invitation Tournament for the second time in school history and secured its first-ever postseason win with an 83-75 victory at New Mexico in the opening round.

The Pioneers' offense produced at historic levels throughout the year, resulting in the best offensive numbers in the program's Division I era. DU's 80.3 scoring average not only was the best in school history, but ranked 11th in all of Division I that season. The Pioneers were especially deadly from beyond the arc, ranking third in the country in 3-point percentage (38.6 percent), third in 3-pointers made per game (9.3) and 17th in total 3-pointers made (297). Those 297 treys made also set a school record. Defensively, Denver also ranked 19th in the nation in blocked shots with 161.

Ard helped pioneer the new-age offense by continuing to develop Nelson, Loven and Samantha Romanowski into all-league selections. Nelson, a second-team honoree, finished third in the league in scoring (16.3 points per game) and first in rebounding average (8.9). Loven, an honorable-mention pick, finished seventh in all of the NCAA in 3-pointers made with 111 and led the Summit League in 3-point shooting percentage at 44.4 percent, also good for eighth in the country. Romanowski also earned honorable mention honors after taking on the point-guard duties, finishing 11th in the country in assists per game with a 6.0 average.

During her first season at Denver, Ard helped the Crimson and Gold to a 16-14 record, which was a 10-win improvement from the previous season and its first winning record in six years. That 10-win improvement tied for the highest turnaround by a first-year staff in the country that season.

In her first season with the Pioneers, Ard successfully implemented a fast-pace offense that saw DU finish the season ranked 27th in 3-pointers made per game (8.5), 40th in 3-point field-goals made (256), 48th in 3-point field-goal percentage (.359) and 72nd in scoring offense (70.6 ppg).

Individually, Claire Gritt earned Summit League Freshman of the Year honors, along with being named to the Newcomer Team and honorable mention team, along with Jordyn Alt.

Prior to her role at Denver, Ard spent two seasons at the University of Dayton, where she served as the assistant coach and recruiting coordinator. While at Dayton, Ard coached a class that was ranked in the top 20 in the nation in 2015 and also worked with the 2015 A-10 Rookie of the Year.

Prior to her time at Dayton, Ard was an assistant coach at Clemson for two years, helping guide the team to compete in the always-tough Atlantic Coast Conference.

Ard also coached at Troy under Chanda Rigby, whom she followed from Pensacola State before the 2012-13 season. Ard was instrumental in putting together Troy's eight-member 2013 signing class, which included three National Junior College Athletic Association (NJCAA) All-Americans.

Ard was a standout recruiter and assistant coach at Pensacola State College in Florida during the 2010-11 and 2011-12 seasons, helping the Pirates earn back-to-back appearances in the NJCAA National Semifinals.

As recruiting coordinator at Pensacola State, Ard signed three WBCA All-Americans and coached the players to 13 all-conference honors. Her players moved on to earn scholarships in the Big East, SEC, Pac-12 and Colonial Athletic Conference.

A native of Hammond, La., Ard was highly recruited out of Loranger High School after averaging over 26.0 points a game, earning all-district honors three consecutive years and leading her team to three final four appearances, including a state championship in 2000 under the direction of Rigby.

Ard's collegiate career began on the junior college level at Chipola (Fla.) Junior College. After playing one season there, she transferred to Southeastern Louisiana where she played from 2004-06, including an all-Southland Conference selection in 2005.

Ard graduated from Southeastern Louisiana University in 2010 with a bachelor's degree in general studies. She then earned her master's degree in psychology from the University of Phoenix in 2013.



MATCHUP



Kayla Ard
1-1
Same

HEAD COACH
School Record
Career Record

Suzy Barcomb
49-76
345-183

TEAM LEADERS

Meagan Mendazona (17.0 ppg)	Points	McKenzi Williams (20.0 ppg)
Emmie Harris (7.0 rpg)	Rebounds	Chinwe Ezeonu (5.0 rpg)
Faith Brantley/Emmie Harris (6)	Assists	Bree Calhoun (11)
Meagan Mendazona (4)	Steals	Bree Calhoun (7)
Meagan Mendazona (4)	Blocks	Bree Calhoun (2)

TEAM COMPARISON

71.0	Points Per Game	60.5
79.5	Points Allowed	99.0
-8.5	Scoring Margin	-38.5
40.8	Field Goal %	34.4
6.5	Threes Per Game	3.0
28.3	Three-Point FG %	16.7
75.0	Free Throw %	70.5
41.0	Rebounds Per Game	26.0
12.5	Assists Per Game	11.0
16.5	Turnovers Per Game	15.0
7.5	Steals Per Game	7.5
4.0	Blocks Per Game	2.0

SERIES HISTORY

Logan: USU leads, 2-0 Away: USU trails, 0-1 Neutral: USU trails, 0-1

Last 10 Meetings:

11/9/19	H	W	70-63
2/2/13	H	W	67-62
1/3/13	A	L	68-71 (OT)
1/3/80	N	L	74-81



MATCHUP



Kayla Ard
1-1
Same

HEAD COACH
School Record
Career Record

Jeff Judkins
411-194
Same

TEAM LEADERS

Meagan Mendazona (17.0 ppg)	Points	Shaylee Gonzales (17.5 ppg)
Emmie Harris (7.0 rpg)	Rebounds	Lauren Gustin (12.0 rpg)
Faith Brantley/Emmie Harris (6)	Assists	Maria Albiero (6)
Meagan Mendazona (4)	Steals	Lauren Gustin (5)
Meagan Mendazona (4)	Blocks	Malli Perri (2)

TEAM COMPARISON

71.0	Points Per Game	57.5
79.5	Points Allowed	64.0
-8.5	Scoring Margin	-6.5
40.8	Field Goal %	38.6
6.5	Threes Per Game	9.0
28.3	Three-Point FG %	40.9
75.0	Free Throw %	90.5
41.0	Rebounds Per Game	27.0
12.5	Assists Per Game	12.0
16.5	Turnovers Per Game	17.5
7.5	Steals Per Game	7.0
4.0	Blocks Per Game	1.5

SERIES HISTORY

Logan: USU trails, 2-16 Away: USU trails, 2-18 Neutral: USU trails, 0-3

Last 10 Meetings:

11/26/19	A	L	50-67	12/22/14	H	L	58-62 (2OT)
11/20/18	H	L	57-62 (OT)	12/21/13	A	L	74-84
12/6/17	A	W	76-69	12/4/12	A	L	77-81
12/17/16	H	L	40-60	12/17/11	H	L	65-73
11/24/15	A	L	69-81	3/19/11	A	L	63-102

SCOUTING THE REDHAWKS

The all-time series is tied, 2-2, with the most recent meeting between the two teams coming in the 2019-20 season when Utah State defeated Seattle in Logan, 70-63. The Redhawks finished the 2019-20 campaign with a 13-16 overall mark, and a 6-9 record in league play to finish the season eighth in the WAC.

This season, Seattle is averaging 60.5 points per game, shooting 34.4 percent (42-of-122) from the field, 16.7 percent (6-of-36) from behind the 3-point line and 70.5 percent (31-of-44) at the free throw line. Redshirt junior guard **McKenzi Williams** leads Seattle's scorers, averaging 20.0 points per game. Redshirt junior forward **Chinwe Ezeonu** leads all players on the glass with 5.0 rebounds per game.

Defensively, the Redhawks have allowed 99.0 points per game this season, with opponents shooting 51.5 percent (70-of-136) from the field, 33.3 percent (19-of-57) from behind the arc and 73.6 percent (39-of-53) at the free throw line. Junior guard **Bree Calhoun** leads the team in both steals (7) and blocks (2).

SCOUTING THE COUGARS

BYU leads the all-time series, 37-4, with the most recent contest coming last season in Provo, where BYU earned a 67-50 victory. The Cougars finished the 2019-20 campaign with a 18-11 overall mark, and a 13-5 record in league play to finish third in the West Coast Conference.

This season, BYU is averaging 57.5 points per game, shooting 38.6 percent (39-of-101) from the field, 40.9 percent (18-of-44) from behind the 3-point line and 90.5 percent (19-of-21) at the free throw line. Sophomore guard **Shaylee Gonzales** leads BYU's scorers, averaging 17.5 points per game. Sophomore forward **Lauren Gustin** leads all BYU players on the glass with 12.0 rebounds per game, while senior guard **Maria Albiero** leads the squad with six assists.

Defensively, the Cougars have allowed 64.0 points per game this season, with opponents shooting 41.3 percent (45-of-109) from the field, 32.6 percent (15-of-46) from behind the arc and 69.7 percent (23-of-33) at the free throw line. **Gustin** leads the team in steals with five, while junior forward **Malli Perri** leads the squad with two blocks.

ARD AT WORK

On March 23, 2020, Utah State University Vice President and Director of Athletics John Hartwell officially introduced **Kayla Ard** as the ninth head women's basketball coach in its 32 seasons. Ard, a native of Hammond, La., comes to Utah State after spending the past three seasons as the associate head coach, recruiting coordinator and offensive coordinator at the University of Denver under Jim Turgeon.

Ard brings 10 years of collegiate experience with her to Utah State, serving as an assistant coach and recruiting coordinator at Denver, Dayton, Clemson, Troy and Pensacola State.

STARTING OUT STRONG

With an 81-74 win over Montana on Nov. 25, **Ard** became just the third head coach in program history to win their first game at the helm. She was the first coach to accomplish this feat since Cindy Perkins in 1978-79. Fern Gardner (1974-75) is the only other Aggie coach to do so.

YOU'RE HIRED!

Along with a new head coach, Utah State also welcomes in an entirely new coaching staff this season. **Karlie Burris**, joins USU as an assistant coach and recruiting coordinator after spending the past three seasons in the same role at Cal State Fullerton. **Jauwan Scaife** and **Jeanne Kenney** join the staff as assistant coaches after their most recent stops at Murray State and St. Michael (Baton Rouge, La.) High School, respectively. **Taylor Ignoto** was brought on as the director of basketball operations and special assistant to the head coach.

SHE'S A FRESHMAN?

Through two games, freshman guard **Meagan Mendazona** leads the Aggies in scoring with 17.0 points per contest. The Monmouth, Ore., native made a splash in her collegiate debut, going for 18 points, seven rebounds, five assists, four blocks and four steals while shooting 8-of-13 from the field against Montana.

SHE'S A FRESHMAN? - PART II

Mendazona's 18 points against Idaho State was the most by a USU freshman in their debut since Katie Toole scored 22 against Sacramento State in 2015-16.

JUST KEEP SCORING

Utah State's 81 points against Montana marked just the second time in as many seasons that the Aggies have scored 80-plus points in regulation against a Division I opponent. USU's only 80-point performance last season came in the first round of the Mountain West Championships, an 81-79 overtime win over San Diego State.

GUARDS CAN REBOUND, TOO

In USU's 61-85 loss to Idaho State, senior guard **Emmie Harris** led the team with a career-high 11 rebounds, crushing her previous career-high of six, a mark which she hit three times.

STARTING NEWCOMERS

In each of the first two games of this season, Utah State has included three newcomers in its starting lineup. **Harris** and sophomore guard **Faith Brantley** are joined by **Mendazona**, graduate guard/forward **Jessica Chatman** and freshman guard/forward **Halle Nelson**.

AGGIES VS THE WAC

USU will face Seattle on Thursday, a member of the Western Athletic Conference. Historically, the Aggies are 29-28 against teams that currently play in the WAC.

AGGIES VS THE WCC

Utah State will face BYU on Monday, a member of the West Coast Conference. Historically, the Aggies are 17-57 against teams that currently play in the WCC.

AGGIE RETURNERS

Utah State returns six letterwinners from the 2019-20 squad, including two starters. Headlining the returners are senior guard **Emmie Harris**, who averaged 3.8 points per game and totaled 54 assists while making 22 starts during the 2019-20 season, and junior forward **Taylor Franson**, who averaged 2.0 points and 4.6 rebounds per game last season, while also recording 21 blocks.

AGGIE RETURNERS - PART II

Other returners for Utah State include sophomore guards **Faith Brantley**, **Kamala Kamakawiwo'ole**, **Elli Emrich** and **Jocelyn Polansky**. In 2019-20, Brantley started 10 games and averaged 2.2 points per game while dishing out 60 assists, and Kamakawiwo'ole averaged 2.3 points and 1.3 rebounds per contest. Emrich averaged 1.0 points and 0.6 rebounds per game, while Polansky had 0.7 points and 0.2 rebounds per game.

QUICK FACTS

Location	Logan, Utah
Nickname	Aggies
Colors	Navy Blue, White, Pewter Grey
Conference.....	Mountain West
Founded	1888
Enrollment.....	27,210
President	Noelle E. Cockett
VP & Athletics Director.....	John Hartwell
Arena.....	Dee Glen Smith Spectrum
Capacity.....	10,270
Program Record	360-528
Home Record	189-181*
Road Record	118-293*
Neutral Record	19-43*
*Information from 1972-73 seasons unavailable	
2019-20 Record	8-23, 2-16 MW
Starters Returning/Lost.....	2/3
Letterwinners Returning/Lost	6/5
Newcomers.....	9

BASKETBALL STAFF

Head Coach.....	Kayla Ard
Alma Mater	Southeastern Louisiana, '10
Record at Utah State	1-1, First Year
Career Record	1-1, First Year
Assistant Coach	Karlie Burris, First year
Assistant Coach	Jeanne Kenney, First year
Assistant Coach	Jauwan Scaife, First year
Director of Operations.....	Taylor Ignoto, First year
Office Phone	(435) 797-8156

MEDIA RELATIONS

Associate Athletics Director for	
Media Relations	Doug Hoffman
Assistant Athletics Director for	
Media Relations.....	Kyle Cottam
Assistant Media Relations	
Coordinator.....	Megan McCuiston
Assistant Media Relations	
Coordinator	Wade Denniston
Media Relations	
Graduate Assistant.....	Jaden Johnson
Office Phone	(435) 797-8584
Cell Phone	(435) 754-4409
Email.....	jaden.johnson@usu.edu
Media Relations Fax.....	(435) 797-2615
Courtside Phone.....	(435) 797-3443
Website.....	UtahStateAggies.com
Mailing Address	7400 Old Main Hill
.....	Logan, Utah 84322-7400

AROUND THE LEAGUE



2020-21 STANDINGS

	Conference			Overall		
	W	L	Pct.	W	L	Pct.
Colorado State	0	0	.000	2	0	1.000
Nevada	0	0	.000	1	0	1.000
San José State	0	0	.000	1	0	1.000
Fresno State	0	0	.000	1	1	.500
San Diego State	0	0	.000	1	1	.500
Utah State	0	0	.000	1	1	.500
Boise State	0	0	.000	0	0	.000
New Mexico	0	0	.000	0	0	.000
Wyoming	0	0	.000	0	0	.000
UNLV	0	0	.000	0	1	.000
Air Force	0	0	.000	0	2	.000

THIS WEEK'S GAMES

All times Mountain
Winning teams in bold

Tuesday, December 1

Omaha at Air Force 5 p.m.
San Francisco at San José State 7 p.m.

Wednesday, December 2

Cal Baptist at San Diego State 3 p.m.
UNLV at CSU Fullerton 6 p.m.
Nevada at Cal Poly TBA

Thursday, December 3

Utah State at Seattle 2 p.m.
Colorado State at Fresno State 6 p.m.

Friday, December 4

Nevada at Air Force 4 p.m.
Colorado State at Fresno State 6 p.m.
College of Idaho at Boise State TBA

Saturday, November 5

UNLV at Utah Valley 2 p.m.
San Diego State at San Diego 3 p.m.
Denver at Wyoming TBA

Sunday, December 6

Nevada at Air Force 1 p.m.
Weber State at Boise State TBA

Monday, December 7

BYU at Utah State 6 p.m.

2020-21 PRESEASON POLL

Rk.	Team (First-Place Votes)	Points
1	Fresno State (22)	266
2	San José State (2)	239
3	Boise State (1)	221
4	San Diego State (1)	185
5	Wyoming	173
6	New Mexico	145
7	Air Force	120
8	Colorado State	117
9	UNLV	111
10	Nevada	95
11	Utah State	44

FRESH(MEN) FACES

Utah State welcomes in five freshmen to the 2020-21 roster in guards **Meagan Mendazona** (Monmouth, Ore.), **Kinley Falslev** (Benson, Utah) and **Amit Lustgarten** (Salt Lake City, Utah), as well as guard/forward **Halle Nelson** (American Fork, Utah) and forward **Emily Jarrell** (Stanford, Fla.).

WELCOME ABOARD

Along with the five incoming freshmen, Utah State also brings in four transfer players with immediate eligibility. Junior guard **Paris Williams** (St. Petersburg, Fla./Daytona State College), junior guard/forward **Monique Pruitt** (Chicago, Ill./Wabash Valley College) and junior forward **Bre Matthews** (Garland, Texas/Ranger College) all join the squad as junior college transfers. Graduate student **Jessica Chatman** (Ridgefield, Wash./Southern Utah) comes to USU as a graduate transfer.

BACK IN ACTION

Redshirt sophomore guard **Shyla Latone** will be back in action this season after redshirting due to NCAA transfer rules in 2019-20. Latone started her career at Cleveland State.

HOME GROWN

Utah State has four players from the state of Utah in freshman guard **Kinley Falslev** (Benson, Utah), freshman guard **Amit Lustgarten** (Salt Lake City, Utah), freshman guard/forward **Halle Nelson** (American Fork, Utah) and junior forward **Taylor Franson** (American Fork, Utah).

MAKING HISTORY

USU made history by becoming the first 11-seed to ever win a game and advance at the Mountain West Championships, when the Aggies defeated 6-seed San Diego State in overtime, 81-79, back in March.

2020-21 MOUNTAIN WEST STATISTICS

TEAM	All	Conference Only
Rebounds Per Game.....	3rd (41.0)	N/A
Blocks Per Game.....	4th (4.0)	N/A
Steals Per Game.....	4th (7.5)	N/A
Field Goal %.....	4th (.408)	N/A
Scoring.....	4th (71.0)	N/A
3-Pt. Field Goal %.....	5th (.283)	N/A
Free Throw %.....	6th (.750)	N/A
Field Goal % Def.....	6th (.432)	N/A
Turnover Margin.....	6th (-2.00)	N/A
3-Pt. Field Goal % Def.....	6th (.356)	N/A
Assist/Turnover.....	6th (0.76)	N/A
Assists.....	6th (12.5)	N/A
Scoring Margin.....	7th (-8.5)	N/A
Scoring Defense.....	7th (79.5)	N/A

INDIVIDUAL	All	Conference Only
Assists		
Faith Brantley.....	10th (3.0 apg)	N/A
Emmie Harris.....	10th (3.0 apg)	N/A
Blocked Shots		
Meagan Mendazona.....	3rd (2.0 bpg)	N/A
Monique Pruitt.....	8th (1.0 bpg)	N/A
Double Doubles		
Emmie Harris.....	t-1st (1)	N/A
Field Goal Percentage		
Meagan Mendazona.....	3rd (.565)	N/A
Free Throw Percentage		
Emmie Harris.....	5th (.923)	N/A
Meagan Mendazona.....	9th (.833)	N/A
Points		
Meagan Mendazona.....	5th (17.0 ppg)	N/A
Rebounds		
Emmie Harris.....	7th (7.5 rpg)	N/A
Steals		
Meagan Mendazona.....	7th (2.0 spg)	N/A
Three-Point Field Goals		
Jessica Chatman.....	3rd (2.0)	N/A
Three-Point Percentage		
Jessica Chatman.....	2nd (.667)	N/A

THE LAST TIME...

THE LAST TIME UTAH STATE...

BEAT AN OPPONENT BY 15+: 72-53 at Colorado State on 1/19/19
BEAT AN OPPONENT BY 20+: 79-57 Nevada on 1/13/18
BEAT AN OPPONENT BY 30+: 82-49 San José State on 1/16/19
BEAT AN OPPONENT BY 40+: 100-58 Loyola Marymount on 11/13/13
BEAT AN OPPONENT BY 50+: 106-35 NNMCM on 11/9/18
SCORED 80+: 81-74 Montana on 11/25/20
SCORED 90+: 92-72 Dixie State on 11/14/17
SCORED 100+: 106-35 NNMCM on 11/9/18
SCORED 100+ IN BACK-TO-BACK GAMES:
103-46 Black Hills State (11/9/13) and 100-58 Loyola Marymount (11/13/13)
MADE 30+ FIELD GOALS: 32 Montana on 11/25/20
MADE 35+ FIELD GOALS: 35 San José State on 2/27/18
MADE 40+ FIELD GOALS: 41 at Sacramento State on 12/19/14
MADE 45+ FIELD GOALS: 45 NNMCM on 11/9/18
ATTEMPTED 65+ FIELD GOALS: 66 Montana on 11/25/20
HAD 10+ STEALS: 12 Montana on 11/25/20
HAD 10+ BLOCKS: 14 BYU on 12/17/16
HAD 15+ ASSISTS: 19 Montana on 11/25/20
HAD 20+ ASSISTS: 20 vs. San Diego State on 3/1/20
HAD 15+ TURNOVERS: 20 Montana on 11/25/20
HAD 20+ TURNOVERS: 20 Montana on 11/25/20
DID NOT HIT A 3-POINTER: at Wyoming on 2/13/19
HAD TWO PLAYERS RECORD A DOUBLE-DOUBLE:
Hailey Bassett (18/12) and Shannon Dufficy (14/12)
at Colorado State on 1/19/19
HAD THREE PLAYERS RECORD A DOUBLE-DOUBLE:
Elise Nelson (10/13), Jennifer Schlott (26/10 assists)
and Franny Vaalu (13/13) College of Idaho on 12/28/13
HAD TWO PLAYERS SCORE A 20+: Lindsey Jensen-Baker (32) and Hailey
Bassett (21) on 12/16/19
HAD AT LEAST FIVE PLAYERS SCORE IN DOUBLE FIGURES:
Hailey Bassett (18), Olivia West (17), Steph Gorman (14),
Marlene Aniambossou (12), Rachel Brewster (12)
Shannon Dufficy (12) NNMCM on 11/9/18

THE LAST TIME A UTAH STATE PLAYER...

RECORDED A DOUBLE-DOUBLE: Emmie Harris (10/11) at Idaho State (11/28/20)
RECORDED A DOUBLE-DOUBLE WITH ASSISTS:
Jennifer Schlott (20/11) vs. Colorado State (3/11/14)
RECORDED A DOUBLE-DOUBLE WITH STEALS:
Alice Coddington (13/13) Weber State (12/21/09)
RECORDED A TRIPLE-DOUBLE: N/A
LED USU IN POINTS, REBOUNDS AND ASSISTS:
Devyn Christensen (19/11/6) at Nevada (2/3/11)
LED USU IN POINTS, REBOUNDS, ASSISTS AND STEALS:
Ashlee Brown (21/10/3/3) Northern Arizona (12/19/11)
LED USU IN POINTS, REBOUNDS, ASSISTS AND BLOCKS:
Ashlee Brown (15/9/4/2) at Idaho State (12/10/11)
LED USU IN POINTS, REBOUNDS, BLOCKS AND STEALS:
Meagan Mendazona (18/7/4/4) Montana (11/25/20)
(one other with seven rebounds)
LED USU IN POINTS, REBOUNDS, ASSISTS, STEALS AND BLOCKS:
Shannon Dufficy (14/15/3/2/3) at Fresno State (1/9/19)
(two others with two steals)
SCORED 20+ POINTS: Hailey Bassett (23) Fresno State (2/15/20)
SCORED 25+ POINTS: Hailey Bassett (29) vs. San Diego State (3/1/20)
SCORED 30+ POINTS: Lindsey Jensen-Baker (32) North Texas (12/16/19)
SCORED 35+ POINTS: Funda Nakkasoglu (37) Pacific (11/21/15)
SCORED 40+ POINTS: Jennifer Schlott (44) at UC Santa Barbara (12/19/13)
NON-STARTER 20+ POINTS: Ashlee Brown (22) at Fresno State (2/12/11)
RECORDED 15+ REBOUNDS: Shannon Dufficy (15) vs. Colorado State (3/10/19)
RECORDED 20+ REBOUNDS: Sharon Epps (22) Colorado State (2/21/83)
RECORDED 10+ ASSISTS: Eliza West (11) at San Diego State (2/27/19)
RECORDED 5+ BLOCKS: Hailey Bassett (5) UNLV (1/1/20)
RECORDED 5+ STEALS: Steph Gorman (5) Boise State (1/18/20)
RECORDED 10+ STEALS: Alice Coddington (13) Weber State (12/21/09)
MADE 10+ FIELD GOALS: Hailey Bassett (10) UNLV (1/1/20)
MADE 15+ FIELD GOALS: Mary Danielson (15) at Alaska-Anchorage (2/26/82)
ATTEMPTED 15+ FIELD GOALS: Steph Gorman (17) vs. San Diego State (3/1/20)
ATTEMPTED 20+ FIELD GOALS: Hailey Bassett (21) New Mexico (2/27/20)
MADE 5+ 3-POINT FIELD GOALS: Lindsey Jensen-Baker (5) North Texas (12/16/19)
ATTEMPTED 5+ 3-POINT FIELD GOALS: Emmie Harris (6) vs. Wyoming (3/2/20)
ATTEMPTED 10+ 3-POINT FIELD GOALS: Steph Gorman (11) vs. SDSU (3/1/20)
PLAYED 40+ MINUTES: Emmie Harris (45) and Steph Gorman (44)
vs. San Diego State (3/1/20)
PLAYED 50+ MINUTES: Elise Nelson (50) BYU (12/22/14)

THE LAST TIME A USU OPPONENT...

SCORING AND MARGIN OF VICTORY
Scored 90+: 94 vs. Oregon State on 12/2/17
Scored 100+: 109 at No. 1 Oregon on 11/13/19
Beat USU by 20+: Idaho State 81, Utah State 65 on 11/28/20
Beat USU by 30+: SJSU 76, Utah State 38 on 2/24/20
Beat USU by 40+: Boise State 80, Utah State 38 on 1/24/06
Beat USU by 50+: No. 1 Oregon 109, Utah State 52 on 11/13/19

SHOOTING PERCENTAGES

Shot over .500 field goals: .529 at San Diego State on 1/4/20
Shot over .550 field goals: .565 at No. 1 Oregon on 11/13/19
Shot over .600 field goals: .600 at San José State on 12/28/17
Held USU under .300 field goals: .273 New Mexico on 2/27/20
Held USU under .250 field goals: .226 at San José State on 2/24/20

ASSISTS, TURNOVERS, BLOCKS, STEALS

Had 20+ assists: 20 Montana on 11/25/20
Had 25+ assists: 31 at No. 1 Oregon on 11/13/19
Had 15+ turnovers: 20 Montana on 11/25/20
Had 20+ turnovers: 20 Montana on 11/25/20
Had 10+ blocks: 10 at No. 4 Oregon State on 12/14/19
Had 0 blocks: 0 at Idaho State on 11/23/20
Had 10+ steals: 11 New Mexico on 2/27/20
Had 0 steals: 0 Colorado State on 3/4/19

THE LAST TIME A USU OPPONENT...

Scored 30+ points: Kamira Sanders (30) Seattle U on 11/9/19
Recorded a double-double: Jordan Hosey (15/13) New Mexico on 2/27/20
Made 10+ field goals: Dora Goles (10) at Idaho State on 11/28/20
Made 5+ three-point field goals: Riley Lupfer (5) at Boise State on 2/8/20
Made 10+ free throws: Marta Gomez (10) at Wyoming on 2/13/19
Had 15+ rebounds: Rodjanae Wade (15) UNLV on 1/1/20
Had 5+ steals: Emily Conroe (6) Air Force on 1/8/20
Had 5+ blocks: Sara Hamson (6) at BYU on 11/26/19
Had 10+ assists: Tommi Olson (10) at Wyoming on 2/19/20



0 FAITH BRANTLEY

SOPHOMORE | GUARD | 5-7
TACOMA, WASH. | GARFIELD HS

BRANTLEY'S CAREER STATISTICS

	GP-GS	Min	Avg	FG-FGA	Pct	3FG-FGA	Pct	FT-FTA	Pct	Off-Def-Tot	Avg	PF	FO	A	TO	Blk	Stl	Pts	Avg
2019-20 (Fr.)	31-10	724	23.4	21-90	.233	9-37	.243	17-23	.739	7-58-65	2.1	55	0	60	48	0	33	68	2.2
2020-21 (So.)	2-2	57	28.5	5-10	.500	3-7	.429	3-4	.750	1-6-7	3.5	4	0	6	7	0	2	16	8.0
Total	33-12	781	23.7	26-100	.260	12-44	.273	20-27	.741	8-64-72	2.2	59	0	66	55	0	35	84	2.5

BRANTLEY GAME-BY-GAME IN 2020-21

Opponent	MIN	FG	3FG	FT	O-D-T	PF	A	TO	B	S	TP
Montana	^33	3-6	2-5	3-4	1-3-4	1	6	6	0	2	11
at Idaho State	^24	2-4	1-2	0-0	0-3-3	3	0	1	0	0	5

BRANTLEY GAME-BY-GAME IN 2019-20

Opponent	MIN	FG	3FG	FT	O-D-T	PF	A	TO	B	S	TP
Portland	^28	3-7	1-3	0-0	1-1-2	2	5	1	0	3	7
Seattle	^28	0-7	0-3	2-2	1-4-5	1	1	1	0	1	2
at Oregon	^30	2-5	0-2	1-2	0-3-3	3	1	2	0	1	5
at Long Beach State	^39	2-5	0-1	0-0	1-3-4	2	4	1	0	1	4
at Cal State Fullerton	^30	1-5	1-4	0-0	0-2-2	2	3	1	0	1	3
at BYU	^33	0-2	0-1	0-0	0-1-1	2	2	2	0	3	0
Dixie State	^36	1-4	1-2	0-0	1-7-8	1	3	1	0	2	3
San José State*	^34	1-1	0-0	0-0	0-2-2	2	2	3	0	1	2
at Fresno State*	^19	0-0	0-0	2-2	0-2-2	3	1	5	0	1	2
at Oregon State	23	1-3	0-1	0-0	0-3-3	3	2	1	0	1	2
North Texas	28	0-2	0-0	0-0	0-2-2	1	4	4	0	0	0
Idaho State	24	2-4	2-4	2-4	1-0-1	2	2	1	0	1	8
at Utah Valley	31	4-6	3-4	3-3	0-0-0	2	3	2	0	2	14
UNLV*	34	0-3	0-2	0-0	0-3-3	4	3	4	0	1	0
at San Diego State*	17	0-2	0-0	0-0	0-0-0	3	0	1	0	1	0
Air Force*	31	0-1	0-0	0-0	0-2-2	2	1	1	0	3	0
at Nevada*	21	0-1	0-0	0-0	0-3-3	0	3	3	0	0	0
Boise State*	18	0-0	0-0	0-0	0-3-3	1	1	0	0	0	0
at Air Force*	26	0-0	0-0	0-2	0-3-3	3	4	2	0	3	0
at Colorado State*	5	0-1	0-0	0-0	0-2-2	1	0	0	0	0	0
Wyoming*	15	2-5	0-0	0-0	0-2-2	0	1	1	0	0	4
San Diego State*	^21	0-2	0-0	2-2	1-1-2	1	3	0	0	2	2
at UNLV*	25	0-4	0-2	0-0	0-1-1	0	0	1	0	1	0
at Boise State*	22	1-3	0-1	2-2	0-3-3	1	3	1	0	3	4
Colorado State*	13	0-1	0-0	0-0	0-1-1	3	1	1	0	0	0
Fresno State*	12	0-1	0-1	0-0	0-0-0	1	2	1	0	1	0
at Wyoming*	17	0-5	0-2	2-2	0-1-1	1	0	0	0	0	2
at San José State*	22	0-2	0-1	1-2	0-2-2	1	1	1	0	0	1
New Mexico*	8	0-0	0-0	0-0	0-1-1	3	1	2	0	0	0
vs San Diego State#	19	0-1	0-0	0-0	1-0-1	2	1	3	0	0	0
vs Wyoming#	15	1-5	1-3	0-0	0-0-0	2	2	1	0	0	3

^ Starter
* Mountain West game
MW Championships

2019-20 (FR): Appeared in 31 games, making 10 starts... Averaged 2.2 points and 2.1 rebounds per game... Finished second on the team in assists with 60... Dished out a season-high five assists in the season-opener against Portland (Nov. 7)... Scored a season-high 14 points at Utah Valley (Dec. 21)... Collected a season-high eight rebounds against Dixie State (Dec. 2)... Shot 23.3 percent (21-of-90) from the field, 24.3 percent (9-of-37) from behind the arc and 73.9 percent (17-of-23) at the free throw line... Was also a Joe E. and Elma Whitesides Scholar-Athlete Award recipient.

BRANTLEY'S	SEASON HIGHS	CAREER HIGHS	SUPERLATIVES	SEASON	CAREER
Points	11 Montana (11/25/20)	14 at Utah Valley (12/21/19)	Double-Figure Scoring:	1 time	2 times
Rebounds	4 Montana (11/25/20)	8 Dixie State (12/2/19)	20-Plus Points:	---	---
Assists	6 Montana (11/25/20)	6 Montana (11/25/20)	30-Plus Points:	---	---
Steals	2 Montana (2/25/20)	3 (5) at Boise State (2/8/20)	5-Plus Rebounds:	---	2 times
Blocks	---	---	5-Plus Assists:	1 time	2 times
Minutes	33 Montana (11/25/20)	39 at Long Beach St. (11/18/19)	Double-Doubles:	---	---



KAMALU KAMAKAWIWO'OLE

SOPHOMORE | GUARD | 5-II

HONOLULU, HAWAII | KALANI HS

KAMAKAWIWO'OLE'S CAREER STATISTICS

	GP-GS	Min	Avg	FG-FGA	Pct	3FG-FGA	Pct	FT-FTA	Pct	Off-Def-Tot	Avg	PF	FO	A	TO	Blk	Stl	Pts	Avg
2019-20 (Fr.)	30-1	360	12.0	19-64	.297	8-29	.276	22-35	.629	13-41-54	1.8	48	1	27	24	9	9	68	2.3
2020-21 (So.)	2-0	18	9.0	1-6	.167	0-2	.000	0-0	.000	1-2-3	1.5	2	0	1	2	0	1	2	1.0
Total	32-1	378	11.8	20-70	.286	8-31	.258	22-35	.629	14-43-57	1.8	50	1	28	26	9	10	70	2.2

KAMAKAWIWO'OLE GAME-BY-GAME IN 2020-21

Opponent	MIN	FG	3FG	FT	O-D-T	PF	A	TO	B	S	TP
Montana	10	1-5	0-2	0-0	1-2-3	2	0	1	0	0	2
at Idaho State	9	0-1	0-0	0-0	0-0-0	0	1	1	0	1	0

KAMAKAWIWO'OLE GAME-BY-GAME IN 2019-20

Opponent	MIN	FG	3FG	FT	O-D-T	PF	A	TO	B	S	TP
Portland	11	0-0	0-0	0-0	0-0-0	2	0	0	0	0	0
Seattle	7	0-1	0-1	0-0	0-2-2	2	1	1	1	0	0
at Oregon	8	0-3	0-1	0-0	1-0-1	2	1	0	0	0	0
at Long Beach State	2	0-1	0-0	0-0	0-0-0	0	1	0	0	0	0
at Cal State Fullerton	6	0-2	0-1	0-0	1-0-1	0	1	0	0	0	0
at BYU	7	0-0	0-0	1-3	0-3-3	3	1	2	0	0	1
Dixie State	DNP										
San José State*	10	1-5	1-1	0-0	1-1-2	0	0	0	1	0	3
at Fresno State*	13	5-8	2-2	3-4	3-2-5	3	2	2	0	0	15
at Oregon State	11	1-2	0-1	0-0	0-1-1	0	0	0	1	0	2
North Texas	11	0-1	0-1	1-2	0-1-1	1	0	1	0	0	1
Idaho State	10	0-2	0-2	2-2	0-4-4	1	1	0	0	0	1
at Utah Valley	^13	1-2	1-2	1-2	0-2-2	3	0	1	0	0	4
UNLV*	11	1-2	0-1	0-0	0-0-0	1	0	2	0	1	2
at San Diego State*	14	1-4	1-2	0-0	0-4-4	1	3	0	0	0	3
Air Force*	19	1-4	0-2	0-0	0-1-1	1	2	1	1	1	2
at Nevada*	16	0-0	0-0	2-2	0-2-2	2	2	2	0	0	2
Boise State*	4	0-0	0-0	0-0	0-0-0	0	0	0	0	0	0
at Air Force*	10	0-2	0-0	1-2	1-1-2	1	0	2	0	1	1
at Colorado State*	14	0-1	0-1	0-0	0-2-2	3	1	4	0	0	0
Wyoming*	16	1-1	0-0	3-4	1-2-3	2	0	1	1	1	5
San Diego State*	22	0-1	0-0	0-0	1-1-2	5	2	1	0	1	0
at UNLV*	8	0-2	0-1	0-0	0-2-2	2	0	1	1	1	0
at Boise State*	17	0-0	0-0	0-0	0-1-1	2	0	0	2	0	0
Colorado State*	24	4-6	2-4	2-2	1-5-6	2	4	1	0	1	12
Fresno State*	8	0-3	0-1	0-0	1-1-2	2	0	0	0	0	0
at Wyoming*	15	0-1	0-0	0-2	0-1-1	1	0	0	1	0	0
at San José State*	20	1-5	0-2	6-10	1-0-1	3	1	1	0	0	8
New Mexico*	18	2-3	1-1	0-0	1-1-2	1	2	0	0	0	5
vs San Diego State#	13	0-2	0-2	0-0	0-1-1	1	2	1	0	1	0
vs Wyoming#	2	0-0	0-0	0-0	0-0-0	1	0	0	0	0	0

^ Starter
 * Mountain West game
 # MW Championships

2019-20 (FR): Appeared in 30 games, starting in one... Averaged 2.3 points and 1.8 rebounds per game... Scored in double figures twice, including a season-high 15 points at Fresno State (Dec. 7)... Recorded season-highs in rebounds and assists against Colorado State (Feb. 12) with six and four, respectively... Shot 29.7 percent (19-of-64) from the field, 27.6 percent (8-of-29) from behind the arc and 62.9 percent (22-of-35) at the free throw line.

KAMAKAWIWO'OLE'S	SEASON HIGHS	CAREER HIGHS	SUPERLATIVES	SEASON	CAREER
Points	2 Montana (11/25/20)	15 at Fresno State (12/7/19)	Double-Figure Scoring:	---	2 times
Rebounds	3 Montana (11/25/20)	6 Colorado State (2/12/20)	20-Plus Points:	---	---
Assists	1 at Idaho State (11/28/20)	4 Colorado State (2/12/20)	30-Plus Points:	---	---
Steals	1 at Idaho State (11/28/20)	1 (9) vs. San Diego State (3/1/20)	5-Plus Rebounds:	---	2 times
Blocks	---	2 at Boise State (2/8/20)	5-Plus Assists:	---	---
Minutes	10 Montana (11/25/20)	24 Colorado State (2/12/20)	Double-Doubles:	---	---



2 MEAGAN MENDAZONA

FRESHMAN | GUARD | 5-9
MONMOUTH, ORE. | CENTRAL HS

MENDAZONA'S CAREER STATISTICS

	GP-GS	Min	Avg	FG-FGA	Pct	3FG-FGA	Pct	FT-FTA	Pct	Off-Def-Tot	Avg	PF	FO	A	TO	Blk	Stl	Pts	Avg
2020-21 (Fr.)	2-2	52	26.0	13-23	.565	3-5	.600	5-6	.833	1-12-13	6.5	3	0	5	1	4	4	34	17.0

MENDAZONA GAME-BY-GAME IN 2020-21

Opponent	MIN	FG	3FG	FT	O-D-T	PF	A	TO	B	S	TP
Montana	^28	8-13	2-3	0-0	0-7-7	1	5	1	4	4	18
at Idaho State	^24	5-10	1-2	5-6	1-5-6	2	0	0	0	0	16

^ Starter

* Mountain West game

MW Championships

HIGH SCHOOL: Was a four-year letterwinner at Central High School in Independence, Ore.... Was named the 5A State Player of the Year as a senior in 2019-20... Was also named the Mid-Willamette Conference Player of the Year and first team all-state as a senior... Earned first-team all-Mid-Willamette Conference honors as a senior... Averaged 19.0 points, 11.4 rebounds, 5.0 steals and 1.6 blocks per game her senior year... Helped the Panthers place sixth in the state championship in the 2017-18 season...Earned first- and second-team all-Mid-Willamette Conference honors... Named second-team all-state as a sophomore... Competed on the Oregon Elite club team.

MENDAZONA'S SEASON HIGHS	CAREER HIGHS	SUPERLATIVES	SEASON	CAREER	
Points	18 Montana (11/25/20)	18 Montana (11/25/20)	Double-Figure Scoring:	2 times	2 times
Rebounds	7 Montana (11/25/20)	7 Montana (11/25/20)	20-Plus Points:	---	---
Assists	5 Montana (11/25/20)	5 Montana (11/25/20)	30-Plus Points:	---	---
Steals	4 Montana (11/25/20)	4 Montana (11/25/20)	5-Plus Rebounds:	2 times	2 times
Blocks	4 Montana (11/25/20)	4 Montana (11/25/20)	5-Plus Assists:	1 time	1 time
Minutes	28 Montana (11/25/20)	28 Montana (11/25/20)	Double-Doubles:	---	---



3

ELLI EMRICH

SOPHOMORE | GUARD | 5-11
 BONN, GERMANY | SCHLOSS HAGERHOF

EMRICH'S CAREER STATISTICS

	GP-GS	Min	Avg	FG-FGA	Pct	3FG-FGA	Pct	FT-FTA	Pct	Off-Def-Tot	Avg	PF	FO	A	TO	Blk	Stl	Pts	Avg
2019-20 (Fr.)	26-0	150	5.8	9-23	.391	1-3	.333	7-10	.700	4-11-15	0.6	15	0	17	15	4	3	26	1.0
2020-21 (So.)	2-0	31	15.5	4-6	.667	0-0	.000	0-2	.000	0-2-2	1.0	1	0	2	3	0	0	8	4.0
Total	28-0	181	6.5	13-29	.448	1-3	.333	7-12	.583	4-13-17	0.6	16	0	19	18	4	3	34	1.2

EMRICH GAME-BY-GAME IN 2020-21

Opponent	MIN	FG	3FG	FT	O-D-T	PF	A	TO	B	S	TP
Montana	14	3-4	0-0	0-0	0-1-1	0	2	2	0	0	6
at Idaho State	17	1-2	0-0	0-2	0-1-1	1	0	1	0	0	2

EMRICH GAME-BY-GAME IN 2019-20

Opponent	MIN	FG	3FG	FT	O-D-T	PF	A	TO	B	S	TP
Portland	6	0-0	0-0	0-0	1-1-2	1	0	0	0	1	0
Seattle	6	0-1	0-0	0-0	0-1-1	1	0	2	0	0	0
at Oregon	8	0-1	0-0	0-0	0-0-0	0	0	1	0	0	0
at Long Beach State	3	0-0	0-0	0-0	0-0-0	1	0	0	0	0	0
at Cal State Fullerton	9	0-0	0-0	1-2	1-0-1	1	1	2	0	0	1
at BYU	3	0-1	0-0	0-0	0-1-1	0	0	0	0	0	0
Dixie State	5	0-0	0-0	2-2	0-1-1	0	0	0	0	0	2
San José State*	2	0-0	0-0	0-0	0-0-0	0	0	0	0	0	0
at Fresno State*	1	0-0	0-0	0-0	0-0-0	0	0	0	0	0	0
at Oregon State	3	0-0	0-0	0-0	0-0-0	1	1	0	0	0	0
North Texas	DNP										
Idaho State	0	0-0	0-0	0-0	0-0-0	0	0	0	0	0	0
at Utah Valley	DNP										
UNLV*	DNP										
at San Diego State*	DNP										
Air Force*	2	0-0	0-0	0-0	0-0-0	0	0	0	0	0	0
at Nevada*	2	0-0	0-0	0-0	0-0-0	0	1	0	0	0	0
Boise State*	6	0-1	0-0	0-0	1-2-3	1	4	1	0	0	0
at Air Force*	4	0-0	0-0	0-0	0-0-0	0	1	1	0	0	0
at Colorado State	DNP										
Wyoming*	4	0-0	0-0	0-0	0-0-0	0	1	0	0	0	0
San Diego State*	11	1-3	0-0	0-0	0-0-0	3	1	1	0	0	2
at UNLV*	8	1-2	0-0	0-0	0-0-0	0	0	2	0	0	2
at Boise State*	6	0-0	0-0	0-0	0-0-0	1	1	1	0	0	0
Colorado State*	2	0-0	0-0	0-0	0-0-0	0	0	0	1	0	0
Fresno State*	5	0-2	0-1	0-0	1-2-3	0	0	0	0	1	0
at Wyoming*	11	1-2	0-0	0-0	0-0-0	0	0	0	0	0	2
at San José State*	11	1-3	0-0	3-4	0-2-2	1	1	2	0	1	5
New Mexico*	1	0-0	0-0	0-0	0-0-0	0	0	1	0	0	0
vs San Diego State#	12	2-4	1-2	1-2	0-1-1	1	2	0	0	0	6
vs Wyoming#	19	3-3	0-0	0-0	0-0-0	3	3	1	3	0	6

^ Starter
 * Mountain West game
 # MW Championships

2019-20 (FR): Saw action in 26 games... Averaged 1.0 point and 0.6 rebounds per game... Had a season-high six points against both San Diego State (March 1) and Wyoming (March 2) in the Mountain West Championships... Recorded a season-high four assists against Boise State (Jan. 18)... Had a season-high three blocks against Wyoming in the quarterfinals of the MW Championships (March 2)... Shot 39.1 percent (9-of-23) from the floor, 33.3 percent (1-of-3) from behind the 3-point line and 70.0 percent (7-of-10) at the free throw line.

EMRICH'S	SEASON HIGHS	CAREER HIGHS	SUPERLATIVES	SEASON	CAREER
Points	6 Montana (11/25/20)	6 (3) vs. Montana (11/25/20)	Double-Figure Scoring:	---	---
Rebounds	1 (2) at Idaho State (11/28/20)	3 (2) Fresno State (2/15/20)	20-Plus Points:	---	---
Assists	2 Montana (11/25/20)	4 Boise State (1/18/20)	30-Plus Points:	---	---
Steals	---	1 (3) at San José State (2/24/20)	5-Plus Rebounds:	---	---
Blocks	---	3 vs. Wyoming (3/2/20)	5-Plus Assists:	---	---
Minutes	17 at Idaho State (11/28/20)	19 vs. Wyoming (3/2/20)	Double-Doubles:	---	---



4 JESSICA CHATMAN

GRADUATE STUDENT | GUARD/FORWARD | 6-0
 RIDGEFIELD, WASH. | UNION HS / BYU / SOUTHERN UTAH

	GP-GS	Min	Avg	FG-FGA	Pct	3FG-FGA	Pct	FT-FTA	Pct	Off-Def-Tot	Avg	PF	FO	A	TO	Blk	Stl	Pts	Avg	
2016-17 (Fr. - BYU)	0-19	62	3.3	4-12	.333	1-2	.500	3-8	.375	2-6-8	0.4	8	0	3	6	0	3	12	0.6	
2017-18 (RS - SUU)																				
2018-19 (R-So.)	13-23	564	24.5	55-150	.367	14-44	.318	34-51	.667	38-58-96	4.2	50	1	16	31	2	19	158	6.9	
2019-20 (Jr.)	24-31	701	22.6	65-164	.396	14-44	.318	53-70	.757	55-96-151	4.9	60	1	18	42	6	19	197	6.4	
2020-21 (GS - USU)	2-2	30	30.0	9-16	.563	4-6	.667	2-4	.500	5-9-14	7.0	6	0	3	4	1	2	24	12.0	
Total	39-75	1357	18.1	133-342	.389	33-96	.344	92-133	.692	100-169-269	3.6	124	2	40	55	9	43	391	5.2	

CHATMAN GAME-BY-GAME IN 2020-21

Opponent	MIN	FG	3FG	FT	O-D-T	PF	A	TO	B	S	TP
Montana	^32	5-8	3-5	1-2	3-4-7	2	1	0	1	2	14
at Idaho State	^28	4-8	1-1	1-2	2-5-7	4	2	4	0	0	10

^ Starter
 * Mountain West game
 # MW Championships

PREVIOUS SCHOOLS: Spent three years at Southern Utah... Appeared in all 31 games as a junior in the 2019-20 season, including 23 starts... Averaged 6.4 points and 4.9 rebounds per game... Saw action in 23 games as a redshirt sophomore in the 2018-19 season, making 13 starts... Averaged 6.9 points and 4.2 rebounds per outing... Redshirted the 2017-18 season due to NCAA transfer rules... Played for BYU as a freshman in 2016-17, appearing in 19 games and averaging 3.3 minutes per contest.

CHATMAN'S	SEASON HIGHS	CAREER HIGHS	SUPERLATIVES	SEASON	CAREER
Points	14 Montana (11/25/20)	22 at Sacramento State (1/19/19)	Double-Figure Scoring:	2 times	21 times
Rebounds	7 (2) at Idaho State (11/28/20)	13 (2) at Idaho (2/29/20)	20-Plus Points:	---	1 time
Assists	2 at Idaho State (11/28/20)	3 at Portland State (2/8/20)	30-Plus Points:	---	---
Steals	2 Montana (11/25/20)	2 (10) Montana (11/25/20)	5-Plus Rebounds:	2 times	23 times
Blocks	1 Montana (11/25/20)	1 (9) Montana (11/25/20)	5-Plus Assists:	---	---
Minutes	32 Montana (11/25/20)	38 (2) Sacramento State (2/14/19)	Double-Doubles:	---	4 times



5

KINLEY FALSLEV

FRESHMAN | GUARD | 5-8

BENSON, UTAH | GREEN CANYON HS

FALSLEV'S CAREER STATISTICS

	GP-GS	Min	Avg	FG-FGA	Pct	3FG-FGA	Pct	FT-FTA	Pct	Off-Def-Tot	Avg	PF	FO	A	TO	Blk	Stl	Pts	Avg
2020-21 (Fr.)	2-0	11	5.5	1-4	.250	1-3	.333	0-0	.000	0-0-0	0	0	0	0	1	0	0	3	1.5

FALSLEV GAME-BY-GAME IN 2020-21

Opponent	MIN	FG	3FG	FT	O-D-T	PF	A	TO	B	S	TP
Montana	2	0-2	0-1	0-0	0-0-0	0	0	0	0	0	0
at Idaho State	9	1-2	1-2	0-0	0-0-0	0	0	1	0	0	3

^ Starter

* Mountain West game

MW Championships

HIGH SCHOOL: Was a four-year letterwinner at Green Canyon High School in North Logan, Utah... Averaged 12.0 points, 3.0 rebounds, 2.5 assists and 1.8 steals per game as a senior... Was a second-team all-state and a first-team all-region honoree as a senior... Made 69 3-pointers as a junior while averaging 11.7 points, 2.7 rebounds, 1.8 assists and 1.2 steals per game... Scored 214 points as a sophomore, including 43 threes, had 53 rebounds, 31 assists and 19 steals... Ranks second in the UHSAA record book for most 3-pointers made in a game with 10... Earned Northern Utah Player of the Week honors... Earned academic all-state honors as a team in 2019... Played at the club level with the Utah Flash.

FALSLEV'S	SEASON HIGHS	CAREER HIGHS	SUPERLATIVES	SEASON	CAREER
Points	3 at Idaho State (11/28/20)	3 at Idaho State (11/28/20)	Double-Figure Scoring:	---	---
Rebounds	---	---	20-Plus Points:	---	---
Assists	---	---	30-Plus Points:	---	---
Steals	---	---	5-Plus Rebounds:	---	---
Blocks	---	---	5-Plus Assists:	---	---
Minutes	9 at Idaho State (11/28/20)	9 at Idaho State (11/28/20)	Double-Doubles:	---	---



10 EMMIE HARRIS

SENIOR | GUARD | 5-10
DANVILLE, KY. | BOYLE COUNTY HS

HARRIS'S CAREER STATISTICS

	GP-GS	Min	Avg	FG-FGA	Pct	3FG-FGA	Pct	FT-FTA	Pct	Off-Def-Tot	Avg	PF	FO	A	TO	Blk	Stl	Pts	Avg
2017-18 (Fr.)	25-0	192	7.7	12-49	.245	3-18	.167	17-23	.739	5-11-16	0.6	20	0	2	19	2	6	44	1.8
2018-19 (So.)	33-7	376	11.4	30-84	.357	17-47	.362	16-24	.667	12-37-49	1.5	20	0	25	23	4	20	93	2.8
2019-20 (Jr.)	31-22	666	21.5	35-130	.269	15-63	.238	32-44	.727	6-59-65	2.1	41	0	54	49	4	33	117	3.8
2020-21 (Sr.)	2-2	58	29.0	5-19	.263	0-8	.000	12-13	.923	1-14-15	7.5	3	0	6	5	0	0	22	11.0
Total	91-31	1292	14.2	82-282	.291	35-136	.257	77-104	.740	24-121-145	1.6	84	0	87	96	10	59	276	3.0

FALSLEV GAME-BY-GAME IN 2020-21

Opponent	MIN	FG	3FG	FT	O-D-T	PF	A	TO	B	S	TP
Montana	^29	3-10	0-4	6-7	0-4-4	1	4	2	0	0	12
at Idaho State	^29	2-9	0-4	6-6	1-10-11	2	2	3	0	0	10

HARRIS GAME-BY-GAME IN 2019-20

Opponent	MIN	FG	3FG	FT	O-D-T	PF	A	TO	B	S	TP
Portland	29	1-8	1-4	0-0	0-2-2	1	4	0	0	3	3
Seattle	15	0-2	0-2	1-2	0-2-2	3	1	1	1	2	1
at Oregon	21	0-4	0-3	0-0	0-0-0	0	1	1	0	0	0
at Long Beach State	20	0-3	0-2	1-4	1-2-3	1	2	3	0	1	1
at Cal State Fullerton	10	0-3	0-3	0-0	0-0-0	2	0	3	1	1	0
at BYU	11	2-5	1-4	0-0	0-0-0	3	2	0	0	0	5
Dixie State	9	0-2	0-1	0-0	0-0-0	0	0	0	0	0	0
San José State*	5	0-1	0-0	0-0	0-0-0	1	0	1	0	1	0
at Fresno State*	14	1-2	1-2	0-0	0-2-2	0	2	1	0	0	3
at Oregon State	^23	0-2	0-1	0-0	1-0-1	2	3	3	0	1	0
North Texas	^15	1-3	0-1	0-0	0-2-2	1	0	0	0	1	2
Idaho State	^18	2-4	0-1	1-1	0-0-0	0	0	2	0	3	5
at Utah Valley	^22	1-6	0-1	4-4	1-1-2	2	1	2	0	2	6
UNLV*	^7	0-0	0-0	0-0	0-0-0	0	1	1	0	0	0
at San Diego State*	^22	0-2	0-1	1-2	0-2-2	3	5	0	1	0	1
Air Force*	^12	0-3	0-2	2-2	0-0-0	2	0	2	0	0	2
at Nevada*	^18	2-4	1-2	0-0	0-2-2	0	4	2	0	0	5
Boise State*	^27	2-4	0-2	1-2	0-2-2	3	1	1	0	0	5
at Air Force*	^18	3-5	1-3	0-0	0-5-5	0	2	3	0	1	7
at Colorado State*	^31	2-5	0-3	3-4	0-5-5	2	3	2	0	1	7
Wyoming*	^21	0-6	0-0	2-2	1-3-4	0	4	0	0	0	2
San Diego State*	^33	3-6	1-2	0-0	1-3-4	2	1	1	0	2	7
at UNLV*	^18	2-5	0-0	2-3	0-1-1	0	1	1	0	0	6
at Boise State*	^24	1-2	0-0	4-4	0-2-2	1	2	2	0	1	6
Colorado State*	^18	1-4	1-1	1-2	0-3-3	0	0	0	0	0	4
Fresno State*	^27	2-6	1-3	2-2	0-1-1	3	3	2	0	0	7
at Wyoming*	^31	2-8	2-5	0-0	0-6-6	1	0	3	0	3	6
at San José State*	^29	0-3	0-2	0-0	0-6-6	0	1	3	0	1	0
New Mexico*	^35	0-2	0-2	5-6	0-2-2	3	4	5	0	4	5
vs San Diego State#	^45	3-8	2-4	0-0	0-2-2	3	4	2	1	3	8
vs Wyoming#	^38	4-12	3-6	2-4	1-3-4	2	2	2	0	2	13

^ Starter
* Mountain West game
MW Championships

2019-20 (JR): Appeared in all 31 games, including 22 starts... Averaged 3.8 points and 2.1 rebounds per game... Recorded a career-high 13 points against Wyoming in the quarterfinals of the Mountain West Championships (March 2)... Had a career-high-tying six rebounds at Wyoming (Feb. 19) and at San José State (Feb. 24)... Dished out a career high of five assists at San Diego State (Jan. 4)... Shot 26.9 percent (35-of-130) from the field, 23.8 percent (15-of-63) from behind the arc and 72.7 percent (32-of-44) at the free throw line... Was also a Joe E. and Elma Whitesides Scholar-Athlete Award recipient.

2018-19 (SO): Appeared in all 33 games, including seven starts... Her 33 appearances tie for first on the single-season games played list... Averaged 2.8 points and 1.5 rebounds per game... Recorded a season-high 11 points against USC (Nov. 23)... Recorded seven points, six rebounds and four assists against Northern New Mexico College

(Nov. 9)... Recorded multiple steals in six games, including a season-high three twice... Shot 35.7 percent (30-of-84) from the floor, 36.2 percent (17-of-47) from behind the arc and 66.7 percent (16-of-24) at the free throw line... Earned academic all-Mountain West honors and was a MW Scholar-Athlete... Was also a Joe E. and Elma Whitesides Scholar-Athlete Award recipient.

2017-18 (FR): Appeared in 25 games during the season... Recorded a season-high eight points against Idaho State (Nov. 27)... Recorded 44 points, 20 rebounds, 17 steals and 12 assists on the season... Averaged 7.7 minutes per game, playing a season-high 18 minutes against Idaho State (Nov. 27)... Shot 24.5 percent (12-of-49) from the floor, 16.7 percent (3-of-18) from the 3-point line and 73.9 percent (17-of-23) from the free throw line... Named a Mountain West Scholar-Athlete and was a Joe E. and Elma Whitesides Scholar-Athlete Award recipient.

HARRIS'S	SEASON HIGHS	CAREER HIGHS	SUPERLATIVES	SEASON	CAREER
Points	12 Montana (11/25/20)	13 vs. Wyoming (3/2/20)	Double-Figure Scoring:	2 times	4 times
Rebounds	11 at Idaho State (11/28/20)	11 at Idaho State (11/28/20)	20-Plus Points:	---	---
Assists	4 Montana (11/25/20)	5 at San Diego State (1/4/20)	30-Plus Points:	---	---
Steals	---	4 New Mexico (2/27/20)	5-Plus Rebounds:	1 time	6 times
Blocks	---	1 (9) at San Diego State (1/4/20)	5-Plus Assists:	---	1 time
Minutes	29 at Idaho State (11/28/20)	45 vs. San Diego State (3/1/20)	Double-Doubles:	1 time	1 time



AMIT LUSTGARTEN

FRESHMAN | GUARD | 5-5

SALT LAKE CITY, UTAH | SKYLINE HS

LUSTGARTEN'S CAREER STATISTICS

	GP-GS	Min	Avg	FG-FGA	Pct	3FG-FGA	Pct	FT-FTA	Pct	Off-Def-Tot	Avg	PF	FO	A	TO	Blk	Stl	Pts	Avg	
2020-21 (Fr.)	1-0	2	2.0	0-0	.000	0-0	.000	0-0	.000	0-0-0	0.0	0	0	0	0	0	0	0	0	0.0

LUSTGARTEN GAME-BY-GAME

Opponent	MIN	FG	3FG	FT	O-D-T	PF	A	TO	B	S	TP
Montana	DNP-C										
@ Idaho State	2	0-0	0-0	0-0	0-0-0	1	0	0	0	0	0

^ Starter

* Mountain West game

MW Championships

HIGH SCHOOL: Was a four-year letterwinner at Green Canyon High School in North Logan, Utah... Averaged 12.0 points, 3.0 rebounds, 2.5 assists and 1.8 steals per game as a senior... Was a second-team all-state and a first-team all-region honoree as a senior... Made 69 3-pointers as a junior while averaging 11.7 points, 2.7 rebounds, 1.8 assists and 1.2 steals per game... Scored 214 points as a sophomore, including 43 threes, had 53 rebounds, 31 assists and 19 steals... Ranks second in the UHSAA record book for most 3-pointers made in a game with 10... Earned Northern Utah Player of the Week honors... Earned academic all-state honors as a team in 2019... Played at the club level with the Utah Flash.

LUSTGARTEN'S SEASON HIGHS	CAREER HIGHS	SUPERLATIVES	SEASON	CAREER
Points	---	Double-Figure Scoring:	---	---
Rebounds	---	20-Plus Points:	---	---
Assists	---	30-Plus Points:	---	---
Steals	---	5-Plus Rebounds:	---	---
Blocks	---	5-Plus Assists:	---	---
Minutes	2 at Idaho State (11/28/20)	Double-Doubles:	---	---



13

PARIS WILLIAMS

JUNIOR | GUARD | 5-8

ST. PETERSBURG, FLA. |

LAKWOOD HS / DAYTONA STATE COLLEGE

WILLIAMS'S CAREER STATISTICS

	GP-GS	Min	Avg	FG-FGA	Pct	3FG-FGA	Pct	FT-FTA	Pct	Off-Def-Tot	Avg	PF	FO	A	TO	Blk	Stl	Pts	Avg
2020-21 (Jr.)	2-0	16	8.0	1-7	.143	0-3	.000	0-0	.000	0-1-1	0.5	5	0	1	1	0	1	2	1.0

WILLIAMS GAME-BY-GAME IN 2020-21

Opponent	MIN	FG	3FG	FT	O-D-T	PF	A	TO	B	S	TP
Montana	7	1-3	0-2	0-0	0-1-1	2	0	1	0	1	2
@ Idaho State	9	0-4	0-1	0-0	0-0-0	3	1	0	0	0	0

^ Starter

* Mountain West game

MW Championships

JUNIOR COLLEGE: Played the first two seasons of her collegiate career at Daytona State College in Daytona Beach, Fla.... Was ranked 20th in her position and 72nd overall in the 2020 class by Collegiate Girls Basketball Report and espnW Hoopgurlz... Helped the Falcons to a 21-10 record as a freshman and a 18-12 mark as a sophomore.... Appeared in all 61 games while at Daytona State, including 59 starts... Averaged 12.0 points, 5.4 assists, 4.0 rebounds and 1.6 steals per game as a sophomore... Averaged 10.0 points, 3.5 rebounds, 3.0 assists and 1.6 steals per game as a freshman... Named first-team all-Mid Florida Conference in both of her seasons with the Falcons.. Was a first-team all-region VIII honoree in 2019... Named Daytona State College Co-Outstanding Player of the Year in 2019... Was a NJCAA junior college top-40 all-star in 2019.

WILLIAMS'	SEASON HIGHS	CAREER HIGHS	SUPERLATIVES	SEASON	CAREER
Points	2 Montana (11/25/20)	2 Montana (11/25/20)	Double-Figure Scoring:	---	---
Rebounds	1 Montana (11/25/20)	1 Montana (11/25/20)	20-Plus Points:	---	---
Assists	1 at Idaho State (11/28/20)	1 at Idaho State (11/28/20)	30-Plus Points:	---	---
Steals	1 Montana (11/25/20)	1 Montana (11/25/20)	5-Plus Rebounds:	---	---
Blocks	---	---	5-Plus Assists:	---	---
Minutes	9 at Idaho State (11/28/20)	9 at Idaho State (11/28/20)	Double-Doubles:	---	---



14 MONIQUE PRUITT

JUNIOR | GUARD | 5-9
 CHICAGO, ILL. | MONTVERDE ACADEMY
 MIAMI DADE COLLEGE / WABASH VALLEY COLLEGE

PRUITT'S CAREER STATISTICS

	GP-GS	Min	Avg	FG-FGA	Pct	3FG-FGA	Pct	FT-FTA	Pct	Off-Def-Tot	Avg	PF	FO	A	TO	Blk	Stl	Pts	Avg
2020-21 (Jr.)	2-0	27	1.5	4-14	.286	1-3	.333	2-2	1.000	1-4-5	2.5	4	0	1	2	2	1	11	5.5

PRUITT GAME-BY-GAME IN 2020-21

Opponent	MIN	FG	3FG	FT	O-D-T	PF	A	TO	B	S	TP
Montana	12	3-7	0-1	0-0	1-3-4	2	1	1	1	0	6
@ Idaho State	15	1-7	1-2	2-2	0-1-1	2	0	1	1	1	5

^ Starter
 * Mountain West game
 # MW Championships

JUNIOR COLLEGE: Played her sophomore season at Wabash Valley College in Mount Carmel, Ill.... Ranked by two recruiting services in the JUCO national rankings as she was ranked 41st by World Exposure and 86th by ASGR... Helped the Warriors to a 30-2 record in 2019-20 as she appeared in 29 games with nine starts, while averaging 13.3 points, 5.7 rebounds, 1.8 steals, 1.2 assists and 0.8 blocks per game... Played her freshman season at Miami Dade College, where she averaged 7.0 points, 2.5 rebounds, 1.5 steals and 0.5 blocks per game in two game appearances.

PRUITT'S	SEASON HIGHS	CAREER HIGHS	SUPERLATIVES	SEASON	CAREER
Points	6 Montana (11/25/20)	6 Montana (11/25/20)	Double-Figure Scoring:	---	---
Rebounds	4 Montana (11/25/20)	4 Montana (11/25/20)	20-Plus Points:	---	---
Assists	1 Montana (11/25/20)	1 Montana (11/25/20)	30-Plus Points:	---	---
Steals	1 at Idaho State (11/28/20)	1 at Idaho State (11/28/20)	5-Plus Rebounds:	---	---
Blocks	1 (2) at Idaho State (11/28/20)	1 (2) at Idaho State (11/28/20)	5-Plus Assists:	---	---
Minutes	15 at Idaho State (11/28/20)	15 at Idaho State (11/28/20)	Double-Doubles:	---	---



22 JOCELYN POLANSKY

SOPHOMORE | GUARD | 5-10
WALLINGFORD, CONN. | CHOATE ROSEMARY HALL

POLANSKY'S CAREER STATISTICS

	GP-GS	Min	Avg	FG-FGA	Pct	3FG-FGA	Pct	FT-FTA	Pct	Off-Def-Tot	Avg	PF	FO	A	TO	Blk	Stl	Pts	Avg	
2019-20 (Fr.)	18-0	73	4.1	4-20	.200	4-16	.250	0-0	.000	0-4-4	0.2	5	0	4	8	0	7	12	0.7	
2020-21 (So.)																				
Total	18-0	73	4.1	4-20	.200	4-16	.250	0-0	.000	0-4-4	0.2	5	0	4	8	0	7	12	0.7	

POLANSKY GAME-BY-GAME IN 2020-21

Opponent	MIN	FG	3FG	FT	O-D-T	PF	A	TO	B	S	TP
Montana	DNP-I										
@ Idaho State	DNP-I										

POLANSKY GAME-BY-GAME IN 2019-20

Opponent	MIN	FG	3FG	FT	O-D-T	PF	A	TO	B	S	TP
Portland	4	1-1	1-1	0-0	0-0-0	0	0	0	0	0	3
Seattle	7	1-1	1-1	0-0	0-1-1	0	1	0	0	1	3
at Oregon	8	0-2	0-1	0-0	0-0-0	1	0	1	0	0	0
at Long Beach State	3	0-0	0-0	0-0	0-0-0	1	0	1	0	0	0
at Cal State Fullerton	10	1-5	1-5	0-0	0-2-2	2	1	0	0	2	3
at BYU	2	1-1	1-1	0-0	0-0-0	0	0	0	0	0	3
Dixie State	3	0-0	0-0	0-0	0-0-0	0	0	0	0	0	0
San José State*	6	0-0	0-0	0-0	0-0-0	0	0	2	0	0	0
at Fresno State*	1	0-0	0-0	0-0	0-0-0	0	0	0	0	0	0
at Oregon State	4	0-1	0-0	0-0	0-0-0	0	0	0	0	1	0
North Texas	DNP										
Idaho State	DNP										
at Utah Valley	DNP										
UNLV*	DNP										
at San Diego State*	DNP										
Air Force*	2	0-2	0-1	0-0	0-0-0	0	0	1	0	2	0
at Nevada*	2	0-0	0-0	0-0	0-0-0	0	0	0	0	0	0
Boise State*	DNP										
at Air Force*	DNP										
at Colorado State*	DNP										
Wyoming*	4	0-1	0-1	0-0	0-0-0	0	1	1	0	1	0
San Diego State*	0	0-0	0-0	0-0	0-0-0	0	0	0	0	0	0
at UNLV*	5	0-2	0-1	0-0	0-0-0	1	0	0	0	0	0
at Boise State*	DNP										
Colorado State*	2	0-1	0-1	0-0	0-0-0	0	0	1	0	0	0
Fresno State*	3	0-1	0-1	0-0	0-1-1	0	1	1	0	0	0
at Wyoming*	DNP										
at San José State*	7	0-2	0-2	0-0	0-0-0	0	0	0	0	0	0
New Mexico*	DNP										
vs San Diego State#	DNP										
vs Wyoming#	DNP										

^ Starter

* Mountain West game

MW Championships

2019-20 (FR): Appeared in 18 games... Averaged 0.7 points and 0.2 rebounds per game... Had 12 points, seven steals, four rebounds and four assists during the season... Averaged 4.1 minutes per game... Shot 20.0 percent (4-of-20) from the field and 25.0 percent (4-of-16) from behind the arc... Was also a Joe E. and Elma Whitesides Schol-ar-Athlete Award recipient.

POLANSKY'S	SEASON HIGHS	CAREER HIGHS	SUPERLATIVES	SEASON	CAREER
Points	---	3 (4) at BYU (11/26/19)	Double-Figure Scoring:	---	---
Rebounds	---	2 at Cal St. Fullerton (11/20/19)	20-Plus Points:	---	---
Assists	---	1 (4) Fresno State (2/15/20)	30-Plus Points:	---	---
Steals	---	2 (2) Air Force (1/8/20))	5-Plus Rebounds:	---	---
Blocks	---	---	5-Plus Assists:	---	---
Minutes	---	10 at Cal St. Fullerton (11/20/19)	Double-Doubles:	---	---



23

SHYLA LATONE

REDSHIRT-SOPHOMORE | GUARD | 5-4

SAN DIEGO, CALIF. | BONITA VISTA HS / CLEVELAND STATE

LATONE'S CAREER STATISTICS

	GP-GS	Min	Avg	FG-FGA	Pct	3FG-FGA	Pct	FT-FTA	Pct	Off-Def-Tot	Avg	PF	FO	A	TO	Blk	Stl	Pts	Avg	
2018-19	14-0	99	7.1	10-30	.333	3-16	.188	2-3	.667	3-3-6	0.4	5	0	7	8	0	6	25	1.8	
(Fr. - CS)																				
2019-20 (RS - USU)																				
2020-21 (R-So.)	2-0	15	7.5	1-6	.167	1-5	.200	0-0	.000	0-2-2	1.0	2	0	0	1	0	0	3	1.5	
Total	16-0	114	7.1	11-36	.301	4-21	.190	2-3	.667	3-5-8	0.5	7	0	7	9	0	6	28	1.8	

LATONE GAME-BY-GAME IN 2020-21

Opponent	MIN	FG	3FG	FT	O-D-T	PF	A	TO	B	S	TP
Montana	7	0-2	0-2	0-0	0-0-0	1	0	1	0	0	0
@ Idaho State	8	1-4	1-3	0-0	0-2-2	1	0	0	0	0	3

^ Starter

* Mountain West game

MW Championships

2019-20 (RS): Redshirted the season... Was a Joe E. and Elma Whitesides Scholar-Athlete Award recipient.

PREVIOUS SCHOOL: Played in 14 games at Cleveland State during the 2018-19 season... Averaged 1.8 points, 0.5 assists, 0.4 rebounds and 0.4 steals per game.

LATONE'S	SEASON HIGHS	CAREER HIGHS	SUPERLATIVES	SEASON	CAREER
Points	3 at Idaho State (11/28/20)	8 at IUPUI (2/10/19)	Double-Figure Scoring:	---	---
Rebounds	2 at Idaho State (11/28/20)	3 at IUPUI (2/10/19)	20-Plus Points:	---	---
Assists	---	2 (2) at Northern Kentucky (2/24/19)	30-Plus Points:	---	---
Steals	---	2 (2) at Northern Kentucky (2/24/19)	5-Plus Rebounds:	---	---
Blocks	---	---	5-Plus Assists:	---	---
Minutes	8 at Idaho State (11/28/20)	28 at IUPUI (2/10/19)	Double-Doubles:	---	---



24 BRE MATHEWS

JUNIOR | GUARD / FORWARD | 6-0
GARLAND, TEXAS | LAKEVIEW CENTENNIAL HS /
NEW MEXICO / RANGER COLLEGE

MATHEWS'S CAREER STATISTICS

	GP-GS	Min	Avg	FG-FGA	Pct	3FG-FGA	Pct	FT-FTA	Pct	Off-Def-Tot	Avg	PF	FO	A	TO	Blk	Stl	Pts	Avg	
2018-19 (Fr. - NM)	13-0	70	5.4	7-17	.412	0-1	.000	8-14	.571	13-17-30	2.3	8	0	1	2	1	4	22	1.7	
2019-20 (So. - JUCO)																				
2020-21 (Jr. - USU)																				
Total	13-0	70	5.4	7-17	.412	0-1	.000	8-14	.571	13-17-30	2.3	8	0	1	2	1	4	22	1.7	

MATHEWS GAME-BY-GAME IN 2020-21

Opponent	MIN	FG	3FG	FT	O-D-T	PF	A	TO	B	S	TP
Montana	DNP-C										
@ Idaho State	DNP-C										

^ Starter
* Mountain West game
MW Championships

PREVIOUS SCHOOLS: Played at New Mexico as a freshman and at Ranger (Texas) College as a sophomore... Was nationally ranked 33rd overall and third in her position by ESPNW HoopGurlz, 27th overall by World Exposure and 45th overall by ASGR after the 2019-20 season... Earned Northern Texas Junior College Athletic Conference honorable mention honors during her sophomore campaign... Appeared in 25 games with the Rangers, including 15 starts, while averaging 16.3 points, 7.0 rebounds, 2.2 assists and 1.6 steals per game... Was the leading scorer for the Rangers after scoring in double figures in 19 games, including nine double-double outings... Appeared in 13 games as a freshman for the Lobos, averaging 2.3 rebounds and 1.7 points per game.

MATHEWS'S	SEASON HIGHS	CAREER HIGHS	SUPERLATIVES	SEASON	CAREER
Points	---	6 Northern Arizona (12/8/18)	Double-Figure Scoring:	---	---
Rebounds	---	6 Northern Arizona (12/8/18)	20-Plus Points:	---	---
Assists	---	1 Stephen F. Austin (12/20/18)	30-Plus Points:	---	---
Steals	---	1 (3) San Jose State (2/27/19)	5-Plus Rebounds:	---	1 time
Blocks	---	---	5-Plus Assists:	---	---
Minutes	---	9 San Jose State (2/27/19)	Double-Doubles:	---	---



25

HALLE NELSON

FRESHMAN | GUARD / FORWARD | 6-1
AMERICAN FORK, UTAH | AMERICAN FORK HS

NELSON'S CAREER STATISTICS

	GP-GS	Min	Avg	FG-FGA	Pct	3FG-FGA	Pct	FT-FTA	Pct	Off-Def-Tot	Avg	PF	FO	A	TO	Blk	Stl	Pts	Avg
2020-21 (Fr.)	2-2	31	15.5	3-8	.375	0-4	.000	0-0	.000	2-8-10	5.0	6	0	0	5	1	3	6	3.0

NELSON GAME-BY-GAME IN 2020-21

Opponent	MIN	FG	3FG	FT	O-D-T	PF	A	TO	B	S	TP
Montana	^18	3-4	0-1	0-0	1-5-6	2	0	4	1	3	6
@ Idaho State	^13	0-4	0-3	0-0	1-3-4	4	0	1	0	0	0

^ Starter

* Mountain West game

MW Championships

HIGH SCHOOL: Was a four-year letterwinner at American Fork (Utah) High School... Averaged 12.2 points, 9.3 rebounds, 2.6 steals and 1.9 assists per game as a senior... Named second-team all-state by the Desert News as a junior and senior... Averaged 14.0 points, 7.0 rebounds, 2.7 steals, 1.2 assists and 1.0 blocks per game as a junior... Named Player of the Year for American Fork girls' basketball... Helped her team win the Utah 5A state championship along with a region championship as a freshman... Played club basketball with Colorado Premier EYBL.

NELSON'S	SEASON HIGHS	CAREER HIGHS	SUPERLATIVES	SEASON	CAREER
Points	6 Montana (11/25/20)	6 Montana (11/25/20)	Double-Figure Scoring:	---	---
Rebounds	6 Montana (11/25/20)	6 Montana (11/25/20)	20-Plus Points:	---	---
Assists	---	---	30-Plus Points:	---	---
Steals	3 Montana (11/25/20)	3 Montana (11/25/20)	5-Plus Rebounds:	1 time	1 time
Blocks	1 Montana (11/25/20)	1 Montana (11/25/20)	5-Plus Assists:	---	---
Minutes	18 Montana (11/25/20)	18 Montana (11/25/20)	Double-Doubles:	---	---



42 TAYLOR FRANISON

JUNIOR | GUARD / FORWARD | 6-1
AMERICAN FORK, UTAH | AMERICAN FORK HS

FRANISON'S CAREER STATISTICS

	GP-GS	Min	Avg	FG-FGA	Pct	3FG-FGA	Pct	FT-FTA	Pct	Off-Def-Tot	Avg	PF	FO	A	TO	Blk	Stl	Pts	Avg	
2017-18 (Fr.)	23-1	154	6.7	6-11	.545	0-0	.000	2-4	.500	9-24-33	1.4	13	0	5	13	5	1	14	0.6	
2018-19 (RS)																				
2019-20 (R-So.)	31-20	519	16.7	30-72	.417	0-2	.000	2-4	.500	63-81-144	4.6	26	0	12	38	21	10	62	2.0	
2020-21 (Jr.)	2-0	20	10.0	4-6	.667	0-0	.000	3-5	.600	2-2-4	2.0	3	0	0	1	0	1	11	5.5	
Total	56-21	693	12.4	40-89	.449	0-2	.000	7-13	.538	74-107-181	3.2	42	0	17	52	26	12	87	1.6	

NELSON GAME-BY-GAME IN 2020-21

Opponent	MIN	FG	3FG	FT	O-D-T	PF	A	TO	B	S	TP
Montana	8	2-2	0-0	0-0	1-1-2	2	0	1	0	0	4
@ Idaho State	13	2-4	0-0	3-5	1-1-2	1	0	0	0	1	7

FRANISON GAME-BY-GAME IN 2019-20

Opponent	MIN	FG	3FG	FT	O-D-T	PF	A	TO	B	S	TP
Portland	10	0-1	0-0	0-0	1-1-2	0	1	1	0	0	0
Seattle	16	0-0	0-0	0-0	3-2-5	0	0	1	1	1	0
at Oregon	9	0-0	0-0	1-2	0-1-1	0	0	0	0	0	1
at Long Beach State	^2	0-0	0-0	0-0	0-0-0	0	0	0	0	0	0
at Cal State Fullerton	12	1-2	0-0	0-0	3-1-4	0	0	1	0	0	2
at BYU	10	0-1	0-0	0-0	2-2-4	3	1	0	0	0	0
Dixie State	17	3-6	0-0	0-0	3-3-6	0	0	2	0	2	6
San José State*	2	0-1	0-0	0-0	1-0-1	0	0	0	0	0	0
at Fresno State*	13	1-1	0-0	0-0	2-2-4	1	0	0	0	0	2
at Oregon State	8	0-3	0-0	0-0	3-1-4	1	0	1	0	0	0
North Texas	17	0-2	0-0	0-0	3-4-7	2	1	1	0	1	0
Idaho State	^20	2-2	0-0	0-0	1-0-1	0	1	0	0	0	4
at Utah Valley	^26	0-2	0-0	0-0	1-6-7	0	1	2	0	0	0
UNLV*	^17	1-2	0-1	0-0	1-2-3	0	0	1	1	0	2
at San Diego State*	^28	0-3	0-0	0-0	3-7-10	2	0	3	2	0	0
Air Force*	^20	0-1	0-0	0-0	2-1-3	1	0	2	0	1	0
at Nevada*	^26	1-1	0-0	0-0	2-6-8	2	1	1	1	1	2
Boise State*	^26	1-4	0-1	0-0	2-2-4	3	0	3	1	1	2
at Air Force*	^17	1-4	0-0	0-0	2-3-5	0	0	2	0	0	2
at Colorado State*	^15	2-2	0-0	0-0	1-2-3	2	0	1	0	0	4
Wyoming*	^20	3-3	0-0	0-0	4-0-4	2	1	0	0	1	6
San Diego State*	^21	1-2	0-0	0-0	4-3-7	0	1	1	2	0	2
at UNLV*	20	1-3	0-0	0-0	1-4-5	0	0	1	3	0	2
at Boise State*	^18	1-3	0-0	0-0	3-3-6	4	0	2	0	0	2
Colorado State*	^13	0-1	0-0	0-0	1-3-4	0	0	0	0	0	0
Fresno State*	^19	1-3	0-0	0-0	4-3-7	0	0	2	3	0	2
at Wyoming*	^7	0-0	0-0	0-0	1-0-1	0	2	1	0	0	0
at San José State*	^15	1-4	0-0	0-0	1-4-5	0	0	3	2	0	2
New Mexico*	^28	4-7	0-0	0-0	5-7-12	0	0	3	2	2	8
vs San Diego State#	^30	3-6	0-0	1-2	2-7-9	2	2	2	1	0	7
vs Wyoming#	^17	2-2	0-0	0-0	1-1-2	1	0	1	2	0	4

^ Starter

* Mountain West game

MW Championships

2019-20 (RS SO): Appeared in 31 games, including 20 starts... Averaged 4.6 rebounds and 2.0 points per game... Scored a career-high eight points against New Mexico (Feb. 27)... Collected five-plus rebounds 14 times, including double figure rebounds twice... Had a career-high 12 rebounds against New Mexico (Feb. 27)... Recorded multiple blocks seven times, including a career-high three at UNLV (Feb. 5) and against Fresno State (Feb. 15)... Shot 41.7 percent (30-of-72) from the field and 50.0 percent (2-of-4) at the free throw line... Was also a Joe E. and Elma Whitesides Scholar-Athlete Award recipient.

2018-19 (RS): Redshirted the season... Was a Joe E. and Elma Whitesides Scholar-Athlete Award recipient.

2017-18 (FR): Saw action in 23 games, making one start... Recorded 14 points, nine rebounds, five blocks, five assists and one steal on the season... Had a season-high four points against Air Force (March 5)... Posted a season-high five rebounds against Wyoming (Feb. 7)... Averaged 6.7 minutes per game, playing a season-high 17 minutes against Air Force (March 5)... Shot 54.5 percent (6-of-11) from the floor and 50.0 percent from the free throw line (2-of-4)... Earned academic all-Mountain West honors and was a Joe E. and Elma Whitesides Scholar-Athlete Award recipient.

FRANISON'S	SEASON HIGHS	CAREER HIGHS	SUPERLATIVES	SEASON	CAREER
Points	7 at Idaho State (11/28/20)	8 New Mexico (2/27/20)	Double-Figure Scoring:	---	---
Rebounds	2 (2) at Idaho State (11/28/20)	12 New Mexico (2/27/20)	20-Plus Points:	---	---
Assists	---	2 (4) vs. San Diego State (3/1/20)	30-Plus Points:	---	---
Steals	1 at Idaho State (11/28/20)	2 (2) New Mexico (2/27/20)	5-Plus Rebounds:	---	15 times
Blocks	---	3 (2) Fresno State (2/15/20)	5-Plus Assists:	---	---
Minutes	13 at Idaho State (11/28/20)	30 vs. San Diego State (3/1/20)	Double-Doubles:	---	---



44

EMILY JARRELL

FRESHMAN | FORWARD / CENTER | 6-2
SANFORD, FLA. | SEMINOLE HS

JARRELL'S CAREER STATISTICS

	GP-GS	Min	Avg	FG-FGA	Pct	3FG-FGA	Pct	FT-FTA	Pct	Off-Def-Tot	Avg	PF	FO	A	TO	Blk	Stl	Pts	Avg	
2020-21 (Fr.)																				

JARRELL GAME-BY-GAME IN 2020-21

Opponent	MIN	FG	3FG	FT	O-D-T	PF	A	TO	B	S	TP
Montana	DNP-I										
@ Idaho State	DNP-I										

^ Starter
* Mountain West game
MW Championships

HIGH SCHOOL: Was a four-year letterwinner at Seminole High School in Sanford, Fla.... Averaged 11.7 points, 9.9 rebounds, 4.1 blocks and 1.2 steals per game as a senior... Helped the Noles to the 2018-19 district championship and the team was district runner-ups for the 2017-18 season.... Earned the 'Come Back Strong' Award and was named the Defensive Player of the Year as a junior... Helped her club team, DME Platinum, to be the silver championship winners in Louisville, Ky.

JARRELL'S	SEASON HIGHS	CAREER HIGHS	SUPERLATIVES	SEASON	CAREER
Points	---	---	Double-Figure Scoring:	---	---
Rebounds	---	---	20-Plus Points:	---	---
Assists	---	---	30-Plus Points:	---	---
Steals	---	---	5-Plus Rebounds:	---	---
Blocks	---	---	5-Plus Assists:	---	---
Minutes	---	---	Double-Doubles:	---	---

2020-21 TRENDS

Overall Record	1-1, 0-0 MW
When the Aggiesthey are	
Play day games.....	1-1
Play night games	0-0
Lead at halftime	0-0
Trail at halftime	1-1
Are tied at halftime	0-0
Shoot better from the field than opponent	1-0
Shoot worse from the field than opponent	0-1
Shoot the same from the field as opponent	0-0
Shoot better from three than opponent	0-0
Shoot worse from three than opponent	1-1
Shoot the same from three as opponent	0-0
Shoot better from the FT line than opponent	1-1
Shoot worse from the FT line than opponent	0-0
Shoot the same from the FT line as opponent	0-0
Out-rebound opponent	1-0
Are out-rebounded by opponent	0-1
Are even in rebounds with opponent	0-0
Commit fewer fouls than opponent	1-0
Commit more fouls than opponent	0-0
Commit same number of fouls	0-1
Have more assists than opponent	0-0
Have fewer assists than opponent	1-1
Have same number of assists	0-0
Have fewer turnovers than opponent	0-0
Have more turnovers than opponent	0-1
Have same number of turnovers	1-0

Utah State's Points Scored/Allowed Summary

Record When Scoring		Record When Allowing
0-0	30-39	0-0
0-0	40-49	0-0
0-0	50-59	0-0
0-1	60-69	0-0
0-0	70-79	1-0
1-0	80-89	0-1
0-0	90-99	0-0
0-0	100+	0-0

Record When the Scoring Margin is...

1 (pt.)	2	3	4	5	6
0-0	0-0	0-0	0-0	0-0	0-0
7	8	9	10-15	16-20	21+
1-0	0-0	0-0	0-0	0-0	0-1

Record By Month

Nov.	Dec.	Jan.	Feb.	March
1-1	0-0	0-0	0-0	0-0

Utah State's Record By Day Of The Week

Sun.	Mon.	Tues.	Wed.	Thurs.	Fri.	Sat.
0-0	0-0	0-0	1-0	0-0	0-0	0-1

2020-21 Production Summary

	Starters Total/% Team	Bench Total/% Team
Minutes	0 / 0	0 / 0
Points	0 / 0	0 / 0
Rebounds	0 / 0	0 / 0

2020-21 Miscellaneous Statistics

	Double Figure Games Scoring	20-Pt. Figure Games	Double Figure Reb/Ast	Double Doubles	
Brantley	2	1	0	0/0	0
Chatman	2	2	0	0/0	0
Emrich	2	0	0	0/0	0
Falslev	2	0	0	0/0	0
Franson	2	0	0	0/0	0
Harris	2	2	0	1/0	1
Jarrell	0	0	0	0/0	0
Kamakawiwo'ole	2	0	0	0/0	0
Latone	2	0	0	0/0	0
Lustgarten	1	0	0	0/0	0
Mathews	0	0	0	0/0	0
Mendazona	2	2	0	0/0	0
Nelson	2	0	0	0/0	0
Polansky	0	0	0	0/0	0
Pruitt	2	0	0	0/0	0
Williams	2	0	0	0/0	0



2019-20 TRENDS

Overall Record 8-23, 2-16 MW

When the Aggiesthey are
 Play day games..... 1-11
 Play night games 7-12

Lead at halftime 5-3
 Trail at halftime 2-19
 Are tied at halftime 1-1

Shoot better from the field than opponent 7-2
 Shoot worse from the field than opponent 1-21
 Shoot the same from the field as opponent 0-0

Shoot better from three than opponent 4-7
 Shoot worse from three than opponent 4-13
 Shoot the same from three as opponent 0-3

Shoot better from the FT line than opponent 3-7
 Shoot worse from the FT line than opponent 5-16
 Shoot the same from the FT line as opponent 0-0

Out-rebound opponent 4-9
 Are out-rebounded by opponent 4-13
 Are even in rebounds with opponent 0-1

Commit fewer fouls than opponent 4-8
 Commit more fouls than opponent 4-13
 Commit same number of fouls 0-2

Have more assists than opponent 4-3
 Have fewer assists than opponent 3-18
 Have same number of assists 1-2

Have fewer turnovers than opponent 3-6
 Have more turnovers than opponent 4-15
 Have same number of turnovers 1-2



Utah State's Points Scored/Allowed Summary

Record When Scoring		Record When Allowing
0-1	30-39	0-0
0-6	40-49	2-0
3-8	50-59	3-4
3-8	60-69	2-11
1-0	70-79	1-6
1-0	80-89	0-1
0-0	90-99	0-0
0-0	100+	0-1

Record When the Scoring Margin is...

1 (pt.)	2	3	4	5	6
1-1	2-1	0-0	0-1	0-1	0-3
7	8	9	10-15	16-20	21+
1-0	2-2	0-1	2-4	0-4	0-5

Record By Month

Nov.	Dec.	Jan.	Feb.	March
2-4	3-4	1-7	1-7	1-1

Utah State's Record By Day Of The Week

Sun.	Mon.	Tues.	Wed.	Thurs.	Fri.	Sat.
1-0	3-2	0-1	1-9	1-2	0-0	2-9

2019-20 Production Summary

	Starters Total/% Team	Bench Total/% Team
Minutes	4,403 / 70.7	1,822 / 29.3
Points	1,383 / 78.8	372 / 21.2
Rebounds	663 / 62.7	394 / 37.3

2019-20 Miscellaneous Statistics

	Double Figure	20-Pt. Games	Double Figure Reb/Ast	Double Doubles	
Aniambossou	28	15	0	0/0	0
Bassett	31	25	7	5/0	5
Brantley	31	1	0	0/0	0
Daulton	28	0	0	0/0	0
Dougherty	7	0	0	0/0	0
Dudley	7	0	0	0/0	0
Emrich	26	0	0	0/0	0
Franson	31	0	0	2/0	0
Gorman	30	17	2	0/0	0
Harris	31	1	0	0/0	0
Jensen-Baker	31	20	3	2/0	1
Kamakawiwo'ole	30	2	0	0/0	0
Latone	Redshirted the 2019-20 Season				
Polansky	18	0	0	0/0	0
Williamson	Redshirted the 2019-20 Season				

2020-21 COMBINED STATISTICS

RECORD:	OVERALL	HOME	AWAY	NEUTRAL
ALL GAMES	1-1	1-0	0-1	0-0
CONFERENCE	0-0	0-0	0-0	0-0
NON-CONFERENCE	1-1	1-0	0-1	0-0

No.	Player	GP-GS	Min	Avg	FG-FGA	Pct	3FG-FGA	Pct	FT-FTA	Pct	Off	Def	Tot	Avg	PF	FO	A	TO	Blk	Stl	Pts	Avg
02	MENDAZONA, Meagan	2-2	52	26.0	13-23	.565	3-5	.600	5-6	.833	1	12	13	6.5	3	0	5	1	4	4	34	17.0
04	CHATMAN, Jessica	2-2	60	30.0	6-16	.563	4-6	.667	2-4	.500	5	9	14	7.0	6	0	3	4	1	2	24	12.0
10	HARRIS, Emmie	2-2	58	29.0	5-19	.263	0-8	.000	12-13	.923	1	14	15	7.5	3	0	6	5	0	0	22	11.0
00	BRANTLEY, Faith	2-2	57	28.5	5-10	.500	3-7	.429	3-4	.750	1	6	7	3.5	4	0	6	7	0	2	16	8.0
14	PRUITT, Monique	2-0	27	13.5	4-14	.286	1-3	.333	2-2	1.000	1	4	5	2.5	4	0	1	2	2	1	11	5.5
42	FRANSON, Taylor	2-0	21	10.5	4-6	.667	0-0	.000	3-5	.600	2	2	4	2.0	3	0	0	1	0	1	11	5.5
03	EMRICH, Elli	2-0	31	15.5	4-6	.667	0-0	.000	0-2	.000	0	2	2	1.0	1	0	2	3	0	0	8	4.0
25	NELSON, Halle	2-2	31	15.5	3-8	.375	0-4	.000	0-0	.000	2	8	10	5.0	6	0	0	5	1	3	6	3.0
23	LATONE, Shyla	2-0	15	7.5	1-6	.167	1-5	.200	0-0	.000	0	2	2	1.0	2	0	0	1	0	0	3	1.5
05	FALSLEV, Kinley	2-0	11	5.5	1-4	.250	1-3	.333	0-0	.000	0	0	0	0.0	0	0	0	1	0	0	3	1.5
01	KAMAKAWIWO'OLE, K.	2-0	19	9.5	1-6	.167	0-2	.000	0-0	.000	1	2	3	1.5	2	0	1	2	0	1	2	1.0
13	WILLIAMS, Paris	2-0	16	8.0	1-7	.143	0-3	.000	0-0	.000	0	1	1	0.5	5	0	1	1	0	1	2	1.0
11	LUSTGARTEN, Amit	1-0	2	2.0	0-0	.000	0-0	.000	0-0	.000	0	0	0	0.0	1	0	0	0	0	0	0	0.0
TM	TEAM.....										25	32	57	3.2	0			17			0	
	Total.....	2	400		51-125	.408	13-46	.283	27-36	.750	18	64	80	41.0	40	0	25	33	8	15	142	71.0
	Opponents.....	2	400		57-132	.432	16-45	.356	29-41	.707	16	59	75	37.5	43	-	34	29	3	14	159	79.5

	USU	OPP	DATE	OPPONENT	W/L	SCORE	ATTEND
SCORING	142	159	11/25/20	MONTANA	W	81-74	65
Points per game	71.0	79.5	11/28/20	at Idaho St.	L	61-85	0
Scoring margin	-8.5	-	* - Denotes Mountain West Conference game				
FIELD GOALS-ATT	51-125	57-132	% - Denotes Mountain West Basketball Tournament				
Field goal pct	.408	.432					
3 POINT FG-ATT	13-46	16-45					
3-point FG pct	.283	.356					
3-pt FG made per game	6.5	8.0					
FREE THROWS-ATT	27-36	29-41					
Free throw pct	.750	.707					
F-Throws made per game	13.5	14.5					
REBOUNDS	82	75					
Rebounds per game	41.0	37.5					
Rebounding margin	+3.5	-					
ASSISTS	25	34					
Assists per game	12.5	17.0					
TURNOVERS	33	29					
Turnovers per game	16.5	14.5					
Turnover margin	-2.0	-					
Assist/turnover ratio	0.8	1.2					
STEALS	15	14					
Steals per game	7.5	7.0					
BLOCKS	8	3					
Blocks per game	4.0	1.5					
ATTENDANCE	65	0					
Home games-Avg/Game	1-65	1-0					
Neutral site-Avg/Game	-	0-0					
SCORE BY PERIODS:							
	1st	2nd	3rd	4th	Total		
Utah State	29	31	41	41	142		
Opponents	40	37	46	36	159		

2019-20 COMBINED STATISTICS

RECORD:	OVERALL	HOME	AWAY	NEUTRAL
ALL GAMES	8-23	4-10	3-12	1-1
CONFERENCE	2-16	0-9	2-7	0-0
NON-CONFERENCE	6-7	4-1	1-5	1-1

No.	Player	GP-GS	Min	Avg	FG-FGA	Pct	3FG-FGA	Pct	FT-FTA	Pct	Off	Def	Tot	Avg	PF	FO	A	TO	Blk	Stl	Pts	Avg
12	BASSETT, Hailey	31-30	962	31.0	170-382	.445	15-31	.484	73-106	.689	52	124	176	5.7	81	1	28	61	41	22	428	13.8
11	JENSEN-BAKER, L.	31-31	932	30.1	118-300	.393	42-123	.341	85-120	.708	47	90	137	4.4	49	1	38	96	3	30	363	11.7
04	GORMAN, Steph	30-30	1067	35.6	109-368	.296	68-210	.324	35-46	.761	15	95	110	3.7	41	1	85	64	5	59	321	10.7
24	ANIAMBOSSOU, M.	28-11	577	20.6	101-224	.451	2-3	.667	59-74	.797	69	81	150	5.4	90	3	13	69	6	23	263	9.4
10	HARRIS, Emmie	31-22	666	21.5	35-130	.269	15-63	.238	32-44	.727	6	59	65	2.1	41	0	54	49	4	33	117	3.8
01	KAMAKAWIWO'OLE, K.	30-1	360	12.0	19-64	.297	8-29	.276	22-35	.629	13	41	54	1.8	48	1	27	24	9	9	68	2.3
00	BRANTLEY, Faith	31-10	724	23.4	21-90	.233	9-37	.243	17-23	.739	7	58	65	2.1	55	0	60	48	0	33	68	2.2
42	FRANSON, Taylor	31-20	519	16.7	30-72	.417	0-2	.000	2-4	.500	63	81	144	4.6	26	0	12	38	21	10	62	2.0
14	DUDLEY, Emma	7-0	67	9.6	5-17	.294	0-1	.000	1-2	.500	6	12	18	2.6	9	0	2	5	1	0	11	1.6
03	EMRICH, Elli	26-0	150	5.8	9-23	.391	1-3	.333	7-10	.700	4	11	15	0.6	15	0	17	15	4	3	26	1.0
20	DOUGHERTY, Leah	7-0	14	2.0	2-5	.400	1-2	.500	0-0	.000	1	1	2	0.3	1	0	0	2	0	1	5	0.7
22	POLANSKY, Jocelyn	18-0	73	4.1	4-20	.200	4-16	.250	0-0	.000	0	4	4	0.2	5	0	4	8	0	7	12	0.7
15	DAULTON, Laura	28-0	114	4.1	3-22	.136	0-1	.000	5-8	.625	11	6	17	0.6	10	0	4	6	2	3	11	0.4
TM	TEAM.....										48	52	100	3.2	0			22			0	
	Total.....	31			626-1717	.365	165-521	.317	338-472	.716	342	715	1057	34.1	471	7	344	507	96	233	1755	56.6
	Opponents.....	31			755-1767	.427	212-618	.343	329-430	.765	333	806	1139	36.7	452	-	441	458	93	259	2051	66.2

	USU	OPP	DATE	OPPONENT	W/L	SCORE	ATTEND
SCORING	1,755	2,051	11/7/19	PORTLAND	L	64-70	2,600
Points per game	56.6	66.2	11/9/19	SEATTLE U	W	70-63	457
Scoring margin	-9.5	-	11/13/19	at No. 1 Oregon	L	52-109	8,334
FIELD GOALS-ATT	626-1,717	755-1,767	11/18/19	at Long Beach St.	W	56-48	469
Field goal pct	.365	.427	11/20/19	at Cal St. Fullerton	L	62-83	321
3 POINT FG-ATT	165-521	212-618	11/26/19	at BYU	L	50-67	5,804
3-point FG pct	.317	.343	12/2/19	DIXIE STATE	W	61-49	467
3-pt FG made per game	5.3	6.8	12/4/19	SAN JOSÉ STATE*	L	61-76	423
FREE THROWS-ATT	338-472	329-430	12/7/19	at Fresno State*	L	64-76	1,997
Free throw pct	.716	.765	12/14/19	at No. 4 Oregon St.	L	46-75	5,038
F-Throws made per game	10.9	10.6	12/16/19	NORTH TEXAS	W	66-55	250
REBOUNDS	1,057	1,139	12/19/19	IDAHO STATE	W	69-61	306
Rebounds per game	34.1	36.7	12/21/19	at Utah Valley	L	49-57	462
Rebounding margin	-2.6	-	1/1/20	UNLV*	L	46-60	410
ASSISTS	344	441	1/4/20	at San Diego State*	L	62-66	678
Assists per game	11.1	14.2	1/8/20	AIR FORCE*	L	45-62	330
TURNOVERS	507	458	1/11/20	at Nevada*	L	60-69	844
Turnovers per game	16.4	14.8	1/18/20	BOISE STATE*	L	59-65	388
Turnover margin	-1.6	-	1/22/20	at Air Force*	W	53-52	252
Assist/turnover ratio	0.7	1.0	1/25/20	at Colorado State*	L	55-56	1,587
STEALS	233	259	1/29/20	WYOMING*	L	54-65	437
Steals per game	7.5	8.4	2/1/20	SAN DIEGO STATE*	L	51-59	409
BLOCKS	96	93	2/5/20	at UNLV*	L	45-69	1,704
Blocks per game	3.1	3.0	2/8/20	at Boise State*	W	58-56	1,560
ATTENDANCE	7,951	35,239	2/12/20	COLORADO STATE*	L	61-67	691
Home games-Avg/Game	14-568	15-2,170	2/15/20	FRESNO STATE*	L	61-79	395
Neutral site-Avg/Game	-	2-1343	2/19/20	at Wyoming*	L	45-64	2,430
			2/24/20	at San Jose State*	L	38-76	1,073
			2/27/20	NEW MEXICO*	L	52-54	388
			3/1/20	vs. No. 6 San Diego State%	W,OT	81-79	1,320
			3/2/20	vs. No. 3 Wyoming%	L	59-64	1,366

SCORE BY PERIODS:

	1st	2nd	3rd	4th	OT	Total
Utah State	427	421	447	446	14	1,755
Opponents	506	480	516	537	12	2,051

* - Denotes Mountain West Conference game
 % - Denotes Mountain West Basketball Tournament

2020-21 TEAM COMPARISON

Opponent	1st	2nd	OT	Score	Mar	Total FG	FG Pct	3-Pointers	3FG Pct	Free Throws	FT Pct	Rebounds	Mar	Assist	TOver	Block	Steal	Fouls
MONTANA	37/39	44/35	---	81-74	+7	32-66/27-64	.485/.422	7-26/8-21	.269/.381	10-13/12-17	.769/.706	42/33	+9	19/20	20/20	7/3	12/8	16/19
Idaho St.	23/38	38/47	---	61-85	-24	19-59/30-68	.322-.441	6-20/8-24	.300/.333	17-23/17-24	.739/.708	40/42	-2	6/14	13/9	1/0	3/6	24/24

2020-21 GAME-BY-GAME STATISTICS

Opponent	Points In Paint	Points Off TO	2nd Chance Points	Fastbreak Points	Bench Points	Largest Lead
MONTANA	26/34	19/21	4/5	0/6	27/20	10
at Idaho St.	22/36	7/16	4/5	5/4	20/32	3
TOTAL	48/70	26/37	8/10	5/10	47/52	---

2020-21 GAME HIGHS

Opponent	Date	Score	W/L	POINTS	REBOUNDS	ASSISTS	STEALS	BLOCKED SHOTS
MONTANA	11/25/20	81-74	W	18-MENDAZONA, Meagan	7-CHATMAN, Jessica Mendazona, Meagan	6-Brantley, Faith	4-Mendazona, Meagan	4-Mendazona, Meagan
at Idaho State	11/28/20	61-85	L	16-MENDAZONA, Meagan	11-HARRIS, Emmie	2-HARRIS, Emmie CHATMAN, Jessica	1-PRUITT, Monique KAMAKAWIWO'OLE, K. FRANSON, Taylor	1-PRUITT, Monique

2020-21 INDIVIDUAL POINTS-REBOUNDS-ASSISTS

Opponent	Date	00	01	02	03	04	04	10	11
		BRANTLEY	KAMAKAWIWO'	MENDAZON	EMRICH	CHATMAN	FALSLEV	HARRIS	LUSTGARTEN
MONTANA	11/25/20	11-4-6	2-3-0	18-7-5	6-1-2	14-7-1	0-0-0	12-4-4	DNP-C
at Idaho St.	11/28/20	5-3-0	0-0-1	16-6-0	2-1-0	10-7-2	3-0-0	10-11-2	0-0-0

Opponent	Date	13	14	22	23	24	25	42	44
		WILLIAMS	PRUITT	POLANSKY	LATONE	MATHEWS	NELSON	FRANSON	JARRELL
MONTANA	11/25/20	2-1-0	6-4-1	DNP-I	0-0-0	DNP-C	6-6-0	4-2-0	DNP-I
at Idaho St.	11/28/20	0-0-1	5-1-0	DNP-I	3-2-0	DNP-C	0-4-0	7-2-0	DNP-I

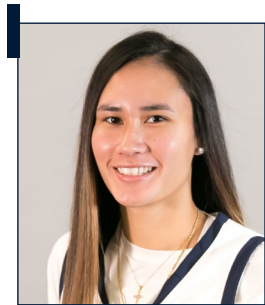
DNP-C - COACH'S DECISION | DNP-I - INJURED | DNP-RS - REDSHIRT





FAITH BRANTLEY

So. • Guard • 5-7 • 1L
Tacoma, Wash.



KAMALU KAMAKAWIWO'OLE

So. • Guard • 5-11 • 1L
Honolulu, Hawaii



MEAGAN MENDAZONA

Fr. • Guard • 5-9 • HS
Monmouth, Ore.



ELLI EMRICH

So. • Guard • 5-11 • 1L
Bonn, Germany



JESSICA CHATMAN

GS • Guard/Forward • 6-0 • TR
Ridgefield, Wash.



KINLEY FALSLEV

Fr. • Guard • 5-8 • HS
Benson, Utah



EMMIE HARRIS

Sr. • Guard • 5-10 • 3L
Danville, Ky.



AMIT LUSTGARTEN

Fr. • Guard • 5-5 • HS
Salt Lake City, Utah



PARIS WILLIAMS

Jr. • Guard • 5-8 • JC
St. Petersburg, Fla.



MONIQUE PRUITT

Jr. • Guard • 5-9 • JC
Chicago, Ill.



JOCELYN POLANSKY

So. • Guard • 5-10 • 1L
Wallingford, Conn.



SHYLA LATONE

R-So. • Guard • 5-4 • RS
San Diego, Calif.



BRE MATHEWS

Jr. • Guard/Forward • 6-0 • JC
Garland, Texas



HALLE NELSON

Fr. • Guard/Forward • 6-1 • HS
American Fork, Utah



TAYLOR FRANSON

Jr. • Guard/Forward • 6-1 • 2L
American Fork, Utah



EMILY JARRELL

Fr. • Forward/Center • 6-2 • HS
Sanford, Fla.



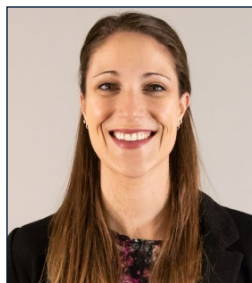
KAYLA ARD

Head Coach



KARLIE BURRIS

Assistant Coach /
Recruiting Coordinator



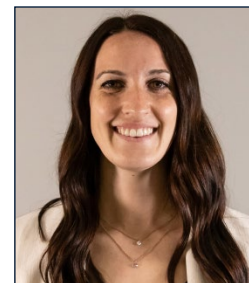
JEANNE KENNEY

Assistant Coach



JAUWAN SCAIFE

Assistant Coach



TAYLOR IGNOTO

Director of Basketball Operations /
Special Assistant to the Head Coach