



# BYU BASKETBALL

Norma Bertoch, BYU Athletic Communications | O: (801) 422-4908 | C: (801) 372-0989 | norma\_bertoch@byu.edu | www.byucougars.com

## BYU 2018-19 SCHEDULE

| Date            | Opponent               | Time/Result | R & TV      |
|-----------------|------------------------|-------------|-------------|
| <b>NOVEMBER</b> |                        |             |             |
| Tue. 11/6       | Dixie State (Exh)      | W 83-56     | W.tv        |
| Fri. 11/9       | UC Riverside           | W 72-70 OT  | BYUtv       |
| Tu. 11/13       | Cal                    | L 70-52     | W.tv        |
| Sat. 11/17      | Eastern Wash.          | W 80-65     | W.tv        |
| Tue. 11/20      | @ Utah State           | W 62-57 OT. | MTN West    |
| Fri. 11/23      | vs. TCU @ SDSU         | W 61-58     |             |
| Sat. 11/24      | vs. Cal Baptist @ SDSU | W 76-69     |             |
| Tu. 11/27       | @ Southern Utah        | L 64-67     | Pluto TV    |
| Thu. 11/29      | @ Utah Valley U.       | W 77-51     | WAC Digital |
| <b>DECEMBER</b> |                        |             |             |
| Sat. 12/8       | @ Utah                 | L 67-78     | Pac-12      |
| Sat. 12/15      | Colorado State         | W 51-42     | BYUtv       |
| Fri. 12/21      | Northern Colorado      | W 70-50     | W.tv        |
| Sat. 12/29      | @ Santa Clara*         | W 54-44     | W.tv        |
| Mon. 12/31      | @ San Francisco*       | W 67-59     | W.tv        |
| <b>JANUARY</b>  |                        |             |             |
| Thu. 1/3        | Pepperdine*            | W 83-58     | BYUtv       |
| Sat. 1/5        | LMU*                   | W 55-44     | BYUtv       |
| Thu. 1/10       | @ Pacific*             | W 77-74     | W.tv        |
| Sat. 1/12       | @ St. Mary's*          | W 74-73     | W.tv        |
| Thu. 1/17       | Gonzaga *              | W 70-68     | BYUtv       |
| Sat. 1/19       | Portland *             | W 79-71     | BYUtv       |
| Sat. 1/26       | @ San Diego*           | W 65-56     | W.tv        |
| Thu. 1/31       | @ LMU*                 | L 58-61     | W.tv        |
| <b>FEBRUARY</b> |                        |             |             |
| Sat. 2/2        | @ Pepperdine*          | L 65-79     | W.tv        |
| Thu. 2/7        | St. Mary's*            | L 75-78     | BYUtv       |
| Sat. 2/9        | Pacific*               | W 75-49     | BYUtv       |
| Thu. 2/14       | @ Portland*            | W 70-69     | W.tv        |
| Sat. 2/16       | @ No.12/13Gonzaga*     | W 66-64     | W.tv        |
| Sat. 2/23       | San Diego*             | W 80-68     | BYUtv       |
| Thu. 2/28       | San Francisco*         | W 82-59     | W.tv        |
| <b>MARCH</b>    |                        |             |             |
| Sat. 3/2        | Santa Clara*           | W 69-64     | BYUtv       |
| Th-Tu 7-12      | @ WCC Champs.          | TBA         | TBA         |
| Mon. 3/11       | vs. Pepperdine         | W 68-63     | BYUtv       |
| Tues. 3/12      | vs. Gonzaga            | 1 p.m.      | ESPNU       |

All times local to site  
**Home games in bold**  
 \* indicates West Coast Conference game



### GONZAGA (28-3)

Head Coach . . . . . Lisa Fortier  
 Career Record . . . . . 125-38 (4th)  
 Record at GON. . . . . Same



### BYU (24-6)

Head Coach . . . . . Jeff Judkins  
 Career Record . . . . . 390-182 (18th)  
 Record at BYU. . . . . Same

### GAME INFORMATION

Live Television: . . . . . ESPNU  
 . . . . . Dan Hughes and Elise Woodward, talent  
 Live Radio: . . . . . BYU Radio  
 . . . . . Greg Wrubell and Kristen Kozlowski, talent  
 Live Stats: . . . . . byucougars.com

### SERIES HISTORY

GONZAGA leads . . . . . 15-11  
 BYU at H/A/N . . . . . 6-4/3-9/2-2  
 BYU under Judkins. . . . . 8-14  
 Last Meeting . . . . . BYU won 66-64 on 2/16/19 in Spokane

### BYU STORY LINES

- No. 2 seed BYU enters the WCC Championship title game on a seven-game win streak after a 68-63 win over No. 3 seed Pepperdine. BYU had an 11-game win streak from Dec. 15 to Jan. 26.
- The Cougars are in the WCC Championships title game for the fourth time since joining the WCC. They won the league championship in 2012 and 2015.
- BYU received votes (9) in the AP Top 25 Poll on March 11. They entered the AP Poll on Jan. 28 and fell out of the top 25 the week of Feb. 4.
- On the year, BYU has a 17-1 record when leading at the half; is 21-3 when making at least 5 treys; is 14-2 when dishing out more assists; and is 14-1 when it pulls down more rebounds than its opponents.
- **Key Players:** #1 B. Chase: steals leader (2.2); 2nd in assists (3.9); 3rd in scoring (12.3); 20 double-digit point games #2 S. Gonzales: points & assists leader (16.4) & (4.2); 2ndT in rebounds (5.5); scored double digit points in 28 games #3 S. Salmon: 4th in rebounds (4.2); 5th in points (5.8); 3rd in blocks with 16 on the year #13 P. Johnson: 2nd in points (14.7); 3rd in assists (3.0), in steals (1.4) & rebounds (4.3); 10+points in 26 games #22 S. Hamson: 1st in rebounds (5.8) & in blocks (2.8); best FG% - 57.7; averages 4.6 points per game #33 J. Moody: 2ndT in rebounds (5.5); 2nd best FG% - 53.5; 4th in scoring (5.9); four 10+points games., last vs. SMC

### PROBABLE STARTERS (BASED ON PREVIOUS GAME)



**#1 | Brenna Chase**  
 Guard | 5-9 | Jr.  
 Thornton, CO  
 Broomfield HS

| GP/GS | MPG  | Pts  | Reb | Ast | Stl | FG%  | 3PT% | FT%  |
|-------|------|------|-----|-----|-----|------|------|------|
| 30/30 | 35.8 | 12.3 | 2.8 | 3.9 | 2.2 | .365 | .344 | .658 |

**Last Game:** Scored 10 points ... tied for game highs in assists with five ... pulled down 3 rebounds ... played 37 minutes ... went 4 of 11 from the field  
**Notes:** 2nd in assists (3.9) ... 1st in steals (2.2) ... plays most minutes ... recorded double digit points in 20 games ... 3rd in scoring (12.3)



**#2 | Shaylee Gonzales**  
 Guard | 5-9 | Fr.  
 Gilbert, AZ | Mesquite HS

| GP/GS | MPG  | Pts  | Reb | Ast | Stl | FG%  | 3PT% | FT%  |
|-------|------|------|-----|-----|-----|------|------|------|
| 30/23 | 34.4 | 16.4 | 5.5 | 4.2 | 2.0 | .449 | .348 | .727 |

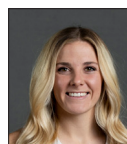
**Last Game:** 28th game with double digit points (17) ... 2 assists ... one block ... one steal ... grabbed a team best eight rebounds ... shot 8 of 16 from the field  
**Notes:** Leads the team in points (16.4) ... 1st in assists (4.2) ... ties for second in rebounds (5.5) ... 2nd in steals (2.0) ... 2nd best FT % (.727)



**#13 | Paisley Johnson**  
 Guard | 5-9 | So.  
 Everett, WA  
 Glacier Peak HS

| GP/GS | MPG  | PTS  | Reb | Ast | Stl | FG%  | 3PT% | FT%  |
|-------|------|------|-----|-----|-----|------|------|------|
| 30/30 | 34.1 | 14.7 | 4.3 | 3.0 | 1.4 | .418 | .336 | .737 |

**Last Game:** Game-high 20 points ... tied for game bests in assists with five ... 4 rebounds ... went 3 of 3 from 3-point range and 8 of 17 from the field ... played 38 minutes  
**Notes:** Best FT% (.737) ... 2nd in scoring with a 14.7 average ... plays 3rd most minutes ... ranks 3rd in assists (3.0) & steals (1.4) ... double-digit points in 26 games and last 17



**#12 | Caitlyn Alldredge**  
 Guard | 5-10 | Sr.  
 Centerville, UT | Viewmont HS

| GP/GS | MPG | Pts | Reb | Ast  | Stl  | FG%  | 3PT% | FT%  |
|-------|-----|-----|-----|------|------|------|------|------|
| 23/9  | 9.8 | 2.1 | 1.5 | 0.74 | 0.17 | .475 | .435 | .333 |

**Last Game:** 2 points ... 3 rebounds ... 1 assist ... 1 block ... played 20 minutes  
**Notes:** Started in her 9th game on the year vs. PEP ... 8 rebounds vs. SCU on March 2 for career bests ... played in 23 games ... is averaging almost 10 minutes of playing time



**#22 | Sara Hamson**  
 Center | 6-7 | So.  
 Lindon, UT/Pleasant Grove HS

| GP/GS | MPG  | Pts | Reb | Ast  | Stl  | FG%  | 3PT% | FT%  |
|-------|------|-----|-----|------|------|------|------|------|
| 28/8  | 19.1 | 4.6 | 5.8 | 0.79 | 0.71 | .577 | .000 | .552 |

**Last Game:** Game-high 6 blocks ... scored 10 points ... grabbed 5 rebounds ... shot 5 of 7 from the field ... missed both free throws attempted ... played 32 minutes, the most to date  
**Notes:** 1st in rebounding (5.8 rpg) & blocks (2.8 bpg) ... has started last 8 straight contests ... scored in double figures in 4 games ... has best FG% (.577)

### 2018-19 OFF THE BENCH (BASED ON PREVIOUS GAME)

| No. | Name              | Pos. | Ht.  | Yr. | Pts. | Reb. | Hometown              | Last Game  |
|-----|-------------------|------|------|-----|------|------|-----------------------|--|
| 3   | Shalae Salmon     | C    | 6-3  | Jr. | 5.8  | 4.2  | Porirua, New Zealand  | 6 points, 1 rebound, went 3 of 4 from the field, played 8 minutes                      |
| 5   | Maria Albiero     | G    | 5-9  | Fr. | 3.3  | 1.8  | Londrina, Brazil      | Played 7 minutes, shot 0 of 1 from the field, has played in all games                  |
| 10  | Abby Mangum       | F    | 6-0  | Fr. | 0.9  | 0.5  | Eagle, Idaho          | DNP  |
| 11  | Kaylee Smiler     | G    | 5-6  | Fr. | -    | -    | Hamilton, New Zealand | DNP  |
| 14  | Babalu Ugwu       | F    | 6-1  | Fr. | 3.6  | 3.0  | Jundai, Brazil        | Played 3 minutes, went 0 of 1 from the field, dished out 1 assist                      |
| 15  | Malli Valgardson  | C    | 6-5  | Fr. | 1.1  | 0.9  | Pleasant Grove, Utah  | DNP  |
| 21  | Khaedin Taito     | G    | 5-11 | Jr. | 0.0  | 0.0  | Hastings, New Zealand | DNP  |
| 24  | Ashley Beckstrand | G    | 5-7  | Fr. | 1.7  | 0.6  | St. George, Utah      | DNP  |
| 32  | Signe Glantz      | F    | 6-1  | Fr. | 0.4  | 0.6  | Ostersund, Sweden     | DNP  |
| 33  | Jasmine Moody     | F    | 6-2  | Sr. | 5.9  | 5.5  | Honolulu, HI          | 3 points, 2 rebounds, went 1 of 3 from the field & 1 of 1 from FT line, played 13 min. |

**NO. 2 SEED BYU TAKES ON NO. 1 SEED GONZAGA IN WCC TITLE GAME**

With a (24-6) record, No. 2 seed BYU women's basketball will play No. 1 seed Gonzaga (28-3) Tuesday, March 12, at 1 p.m. PST at the Orleans Arena for its third WCC Championship trophy. The game will be carried live on ESPNU. It will also air live on BYU Radio.

**ABOUT BYU**

- The Cougars are making their fourth appearance in the title game of the league tournament since joining the WCC. BYU has two WCC crowns under its belt, winning in 2012 and 2015.
- The Cougars received votes (9) in the Associated Press Top 25 Poll as of March 11. They entered the AP Poll on Jan. 28 and fell out of the top 25 the week of Feb. 4.
- On the year, BYU has a 17-1 record when leading at the half; is 21-3 when making at least 5 treys; is 15-2 when dishing out more assists; and is 14-1 when it pulls down more rebounds than its opponents.
- Freshman Shaylee Gonzales, who has scored in double-digits in 28 games, leads the team in scoring and assists with 16.4 and 4.2 averages, respectively. Sophomore Paisley Johnson contributes 14.7 points while junior Brenna Chase puts up 12.3 points a contest. Chase leads in steals (2.2 spg). Sophomore center Sara Hamson leads the team in rebounding (5.8) and blocks (2.8). Senior forward Jasmine Moody ties for second place in rebounding with Gonzales, averaging 5.5 boards a game.
- The Cougars are averaging 68.8 points and 38.1 rebounds a game. They are holding opponents to just 62.6 points per contest. BYU is shooting 42.6 percent from the field, 33.8 percent from behind the arc and 69.7 percent from the free-throw line.
- For the first time in the history of the series between BYU and Gonzaga, the Cougars swept the Bulldogs. In the first matchup in Provo, BYU beat Gonzaga 70-68 on Jan. 17. In Spokane, the Cougars recorded their first win there, a 66-64 victory on Feb. 16.
- In the WCC Championships, these two teams have met four times compiling a 2-2 record. They battled twice in the semifinals. In 2013, Gonzaga won 62-43 on 3/9/13 and in 2015, BYU won 61-55 on 3/19/15. In the finals, they met in 2012 where BYU won 78-66 on 3/5/12 and in 2014 where Gonzaga won 71-57 on 3/11/14.

**ABOUT GONZAGA**

- The Bulldogs advanced to the WCC Championship game after a one-point, 78-77 double overtime win over No. 4 seed St. Mary's.
- Gonzaga is averaging 73.9 points and 38.8 rebounds per game. They shoot 45.8 percent from the field and 75.9 percent from the free-throw line.

**UP NEXT FOR BYU**

The winner of the WCC championships gets an automatic bid into the 2019 NCAA Championships.

**TEAM COMPARISON**

| BYU  | CATEGORY    | GON  |
|------|-------------|------|
| 24-6 | W-L         | 28-3 |
| 8-2  | Last 10     | 9-1  |
| 5-0  | Last 5      | 5-0  |
| 68.2 | PPG         | 73.9 |
| .424 | FG%         | 45.8 |
| .337 | 3FG%        | 37.8 |
| .700 | FT%         | 75.9 |
| 38.4 | RPG         | 38.8 |
| 15.6 | Assist/Game | 15.9 |
| 14.2 | TO/Game     | 13.4 |
| 8.4  | Steals/Game | 9.6  |
| 4.7  | Blocks/Game | 3.4  |

**BYU STAT LEADERS**

| CATEGORY            | PLAYER              |
|---------------------|---------------------|
| Scoring: 16.4 ppg   | #2 Shaylee Gonzales |
| Rebounding: 5.8 rpg | #22 Sara Hamson     |
| Assists: 4.2 apg    | #2 Shaylee Gonzales |
| Steals: 2.2 spg     | #1 Brenna Chase     |
| Blocks: 2.8 bpg     | #22 Sara Hamson     |

**GONZAGA STAT LEADERS**

| CATEGORY            | PLAYER              |
|---------------------|---------------------|
| Scoring: 14.5 ppg   | # 00 Zykeria Rice   |
| Rebounding: 5.9 rpg | # 00 Zykeria Rice   |
| Assists: 4.2 apg    | # 11 Laura Stockton |
| Steals: 1.8 spg     | # 11 Laura Stockton |
| Blocks: .84 bpg     | # 00 Zykeria Rice   |

**NATIONAL RANKINGS**

**Associated Press Top 25 - Week 19  
March 11, 2019).**

| Rank | School            | Record  |
|------|-------------------|---------|
| 1.   | Baylor            | (30-1)  |
| 2.   | UConn             | (30-2)  |
| 3.   | Notre Dame        | (30-3)  |
| 4.   | Mississippi State | (30-2)  |
| 5.   | Louisville        | (29-3)  |
| 6.   | Stanford          | (28-4)  |
| 7.   | Oregon            | (29-4)  |
| 8.   | Iowa              | (26-6)  |
| 9.   | Maryland          | (28-4)  |
| 10.  | NC State          | (26-5)  |
| 11.  | Oregon State      | (24-7)  |
| 12.  | Gonzaga*          | (27-3)  |
| 13.  | Marquette         | (24-8)  |
|      | Iowa State        | (25-7)  |
| 15.  | Syracuse          | (24-8)  |
| 16.  | South Carolina    | (21-9)  |
| 17.  | Texas A&M         | (24-7)  |
| 18.  | Kentucky          | (24-7)  |
| 19.  | Miami             | (24-8)  |
| 20.  | UCLA              | (20-12) |
| 21.  | Drake             | (25-5)  |
| 22.  | Texas             | (23-9)  |
| 23.  | Arizona State     | (20-10) |
| 24.  | Rice              | (25-3)  |
| 25.  | Florida State     | (23-8)  |

Others receiving votes: DePaul 34, South Dakota State 33, South Dakota 22, Missouri 13, Florida Gulf Coast 10, **BYU\* 9**, Kansas State 8, UCF 3, Quinnipiac 1, Rutgers 1, Wright State 1, Boise State 1

\*Denotes BYU opponent

**Brigham Young University**  
**BYU Combined Team Statistics (as of Mar 11, 2019)**  
**All games**

| RECORD:        | OVERALL | HOME | AWAY | NEUTRAL |
|----------------|---------|------|------|---------|
| ALL GAMES      | 24-6    | 12-2 | 9-4  | 3-0     |
| CONFERENCE     | 15-3    | 8-1  | 7-2  | 0-0     |
| NON-CONFERENCE | 9-3     | 4-1  | 2-2  | 3-0     |

| ##             | Player             | gp-gs | min  | Total |          |      | 3-Point |      | F-Throw |       | Rebounds |     |      |      | pf  | dq | a   | to  | blk | stl | pts  | avg  |  |
|----------------|--------------------|-------|------|-------|----------|------|---------|------|---------|-------|----------|-----|------|------|-----|----|-----|-----|-----|-----|------|------|--|
|                |                    |       |      | avg   | fg-fga   | fg%  | 3fg-fga | 3fg% | ft-fga  | ft%   | off      | def | tot  | avg  |     |    |     |     |     |     |      |      |  |
| 02             | GONZALES, Shaylee  | 30-23 | 1032 | 34.4  | 173-385  | .449 | 49-141  | .348 | 96-132  | .727  | 50       | 114 | 164  | 5.5  | 45  | 1  | 126 | 80  | 10  | 59  | 491  | 16.4 |  |
| 13             | JOHNSON, Paisley   | 30-30 | 1024 | 34.1  | 147-352  | .418 | 46-137  | .336 | 101-137 | .737  | 25       | 105 | 130  | 4.3  | 71  | 1  | 91  | 62  | 3   | 42  | 441  | 14.7 |  |
| 01             | CHASE, Brenna      | 30-30 | 1074 | 35.8  | 134-367  | .365 | 77-224  | .344 | 25-38   | .658  | 11       | 74  | 85   | 2.8  | 56  | 1  | 117 | 61  | 17  | 67  | 370  | 12.3 |  |
| 33             | MOODY, Jasmine     | 30-8  | 647  | 21.6  | 68-127   | .535 | 2-3     | .667 | 40-59   | .678  | 43       | 121 | 164  | 5.5  | 56  | 1  | 10  | 35  | 5   | 11  | 178  | 5.9  |  |
| 03             | SALMON, Shalae     | 26-22 | 506  | 19.5  | 69-141   | .489 | 0-0     | .000 | 14-30   | .467  | 38       | 72  | 110  | 4.2  | 67  | 5  | 18  | 47  | 16  | 4   | 152  | 5.8  |  |
| 22             | HAMSON, Sara       | 28-8  | 534  | 19.1  | 56-97    | .577 | 0-0     | .000 | 16-29   | .552  | 65       | 96  | 161  | 5.8  | 65  | 0  | 22  | 35  | 78  | 20  | 128  | 4.6  |  |
| 14             | UGWU, Babalu       | 28-13 | 307  | 11.0  | 43-105   | .410 | 0-1     | .000 | 14-17   | .824  | 30       | 53  | 83   | 3.0  | 52  | 1  | 7   | 28  | 3   | 17  | 100  | 3.6  |  |
| 05             | ALBIERO, Maria     | 30-7  | 473  | 15.8  | 37-121   | .306 | 12-43   | .279 | 14-19   | .737  | 10       | 43  | 53   | 1.8  | 23  | 0  | 49  | 26  | 0   | 13  | 100  | 3.3  |  |
| 12             | ALLDREDGE, Caitlyn | 23-9  | 225  | 9.8   | 19-40    | .475 | 10-23   | .435 | 1-3     | .333  | 7        | 27  | 34   | 1.5  | 25  | 0  | 17  | 8   | 5   | 4   | 49   | 2.1  |  |
| 24             | BECKSTRAND, Ashley | 15-0  | 62   | 4.1   | 9-18     | .500 | 1-4     | .250 | 6-8     | .750  | 3        | 6   | 9    | 0.6  | 8   | 0  | 3   | 8   | 0   | 4   | 25   | 1.7  |  |
| 15             | VALGARDSON, Malli  | 18-0  | 85   | 4.7   | 6-29     | .207 | 5-20    | .250 | 2-2     | 1.000 | 6        | 11  | 17   | 0.9  | 11  | 0  | 4   | 6   | 5   | 1   | 19   | 1.1  |  |
| 10             | MANGUM, Abby       | 8-0   | 28   | 3.5   | 1-5      | .200 | 1-4     | .250 | 4-4     | 1.000 | 0        | 4   | 4    | 0.5  | 3   | 0  | 1   | 1   | 0   | 2   | 7    | 0.9  |  |
| 32             | GLANTZ, Signe      | 10-0  | 38   | 3.8   | 2-5      | .400 | 0-1     | .000 | 0-0     | .000  | 3        | 3   | 6    | 0.6  | 8   | 0  | 1   | 2   | 1   | 0   | 4    | 0.4  |  |
| 21             | TAITO, Khaedin     | 3-0   | 8    | 2.7   | 0-0      | .000 | 0-0     | .000 | 0-0     | .000  | 0        | 0   | 0    | 0.0  | 1   | 0  | 0   | 1   | 0   | 0   | 0    | 0.0  |  |
| Team           |                    |       |      |       |          |      |         |      |         |       | 60       | 62  | 122  |      | 1   |    | 16  |     |     |     |      |      |  |
| Total.....     |                    | 30    | 6043 |       | 764-1792 | .426 | 203-601 | .338 | 333-478 | .697  | 351      | 791 | 1142 | 38.1 | 492 | 10 | 466 | 416 | 143 | 244 | 2064 | 68.8 |  |
| Opponents..... |                    | 30    | 6050 |       | 665-1788 | .372 | 207-654 | .317 | 341-483 | .706  | 393      | 742 | 1135 | 37.8 | 462 | -  | 406 | 465 | 79  | 220 | 1878 | 62.6 |  |

| TEAM STATISTICS        | BYU      | OPP      | Date        | Opponent              | Score     | Att. |
|------------------------|----------|----------|-------------|-----------------------|-----------|------|
| SCORING                | 2064     | 1878     | 11/09/18    | UC RIVERSIDE          | Wot 72-70 | 1575 |
| Points per game        | 68.8     | 62.6     | 11/13/18    | CALIFORNIA            | L 52-70   | 425  |
| Scoring margin         | +6.2     | -        | 11/17/18    | EASTERN WASH.         | w 80-65   | 762  |
| FIELD GOALS-ATT        | 764-1792 | 665-1788 | 11/20/18    | at Utah State         | Wot 62-57 | 730  |
| Field goal pct         | .426     | .372     | 11-23-18    | vs TCU                | w 61-58   | 703  |
| 3 POINT FG-ATT         | 203-601  | 207-654  | 11-24-18    | vs California Baptist | w 76-69   | 0    |
| 3-point FG pct         | .338     | .317     | 11/27/18    | at Southern Utah      | L 64-67   | 1021 |
| 3-pt FG made per game  | 6.8      | 6.9      | 11/29/18    | at Utah Valley        | w 77-51   | 1605 |
| FREE THROWS-ATT        | 333-478  | 341-483  | 12/08/18    | at Utah               | L 67-78   | 6106 |
| Free throw pct         | .697     | .706     | 12/15/18    | COLORADO ST.          | w 51-42   | 500  |
| F-Throws made per game | 11.1     | 11.4     | 12/21/18    | NORTHERN COLO.        | w 70-50   | 681  |
| REBOUNDS               | 1142     | 1135     | ** 12/29/18 | at Santa Clara        | w 54-44   | 351  |
| Rebounds per game      | 38.1     | 37.8     | * 12/31/18  | at San Francisco      | w 67-59   | 263  |
| Rebounding margin      | +0.2     | -        | * 01/03/19  | PEPPERDINE            | w 83-58   | 679  |
| ASSISTS                | 466      | 406      | * 01/05/19  | LOYOLA MARYMOUNT      | w 55-44   | 852  |
| Assists per game       | 15.5     | 13.5     | * 1/10/19   | at Pacific            | w 77-74   | 515  |
| TURNOVERS              | 416      | 465      | * 1/12/19   | at Saint Mary's (CA)  | w 74-73   | 531  |
| Turnovers per game     | 13.9     | 15.5     | * 01/17/19  | GONZAGA               | w 70-68   | 1341 |
| Turnover margin        | +1.6     | -        | * 01/19/19  | PORTLAND              | w 79-71   | 1177 |
| Assist/turnover ratio  | 1.1      | 0.9      | * 1/26/19   | at San Diego          | w 65-56   | 433  |
| STEALS                 | 244      | 220      | * 1/31/19   | at LMU                | L 58-61   | 246  |
| Steals per game        | 8.1      | 7.3      | * 02/02/19  | at Pepperdine         | L 65-79   | 0    |
| BLOCKS                 | 143      | 79       | * 02/07/19  | SAINT MARY'S (CA)     | L 75-78   | 3981 |
| Blocks per game        | 4.8      | 2.6      | * 02/09/19  | PACIFIC               | w 75-49   | 959  |
| ATTENDANCE             | 15852    | 24521    | * 02/14/19  | at Portland           | w 70-69   | 506  |
| Home games-Avg/Game    | 14-1132  | 13-1408  | * 02/16/19  | at No. 13/12 Gonzaga  | w 66-64   | 6000 |
| Neutral site-Avg/Game  | -        | 3-2071   | * 02/23/19  | SAN DIEGO             | w 80-68   | 1225 |
|                        |          |          | * 02/28/19  | SAN FRANCISCO         | w 82-59   | 556  |
|                        |          |          | * 03/02/19  | SANTA CLARA           | w 69-64   | 1139 |
|                        |          |          | 03-11-19    | vs Pepperdine         | w 68-63   | 5511 |

\* = Conference game

**Brigham Young University**  
**BYU Points-Rebounds-Assists (as of Mar 11, 2019)**  
**All games**

| Opponent              | Date     | Score |   | 01         | 02         | 03         | 05         | 10         | 12         | 13         |
|-----------------------|----------|-------|---|------------|------------|------------|------------|------------|------------|------------|
|                       |          |       |   | CHASE,BREN | GONZALES,S | SALMON,SHA | ALBIERO,MA | MANGUM,ABB | ALLDREDGE, | JOHNSON,PA |
| UC RIVERSIDE          | 11/09/18 | 72-70 | w | 18-4-7     | 16-3-1     | 4-9-2      | 10-7-3     | DNP        | 0-0-0      | 18-12-2    |
| CALIFORNIA            | 11/13/18 | 52-70 | L | 8-1-5      | 13-5-4     | 2-6-2      | 2-1-1      | 0-0-0      | 0-0-0      | 14-7-1     |
| EASTERN WASH.         | 11/17/18 | 80-65 | w | 17-2-10    | 16-0-2     | 14-3-0     | 4-3-4      | 0-0-0      | 0-0-0      | 10-6-4     |
| at Utah State         | 11/20/18 | 62-57 | w | 13-3-3     | 20-5-3     | 7-9-1      | 4-2-0      | DNP        | DNP        | 10-4-1     |
| vs TCU                | 11-23-18 | 61-58 | w | 18-2-2     | 12-4-3     | 8-5-1      | 0-2-3      | DNP        | DNP        | 10-4-6     |
| vs California Baptist | 11-24-18 | 76-69 | w | 11-2-4     | 22-10-8    | 19-7-1     | 0-2-1      | DNP        | DNP        | 20-4-3     |
| at Southern Utah      | 11/27/18 | 64-67 | L | 14-4-0     | 13-6-6     | 10-5-0     | 6-3-1      | DNP        | DNP        | 11-5-4     |
| at Utah Valley        | 11/29/18 | 77-51 | w | 4-3-7      | 23-5-4     | 7-10-0     | 4-5-4      | 0-2-1      | 2-6-0      | 8-5-1      |
| at Utah               | 12/08/18 | 67-78 | L | 17-4-3     | 11-2-5     | 6-2-0      | 0-2-0      | DNP        | 5-2-1      | 17-3-2     |
| COLORADO ST.          | 12/15/18 | 51-42 | w | 0-2-2      | 29-9-4     | 0-4-1      | 10-1-2     | DNP        | DNP        | 9-11-1     |
| NORTHERN COLO.        | 12/21/18 | 70-50 | w | 15-1-3     | 14-6-5     | 4-7-0      | 2-1-4      | DNP        | 3-0-0      | 12-2-6     |
| at Santa Clara        | 12/29/18 | 54-44 | w | 10-3-4     | 13-7-2     | 6-6-0      | 0-1-3      | DNP        | 0-0-1      | 10-6-2     |
| at San Francisco      | 12/31/18 | 67-59 | w | 13-5-5     | 19-10-2    | 5-1-0      | 0-0-0      | DNP        | DNP        | 9-4-2      |
| PEPPERDINE            | 01/03/19 | 83-58 | w | 23-2-7     | 22-7-7     | 2-1-0      | 0-0-1      | 0-1-0      | 0-0-0      | 24-5-2     |
| LOYOLA MARYMOUNT      | 01/05/19 | 55-44 | w | 14-1-4     | 13-2-7     | 8-5-1      | 0-3-1      | DNP        | 0-1-0      | 10-2-2     |
| at Pacific            | 1/10/19  | 77-74 | w | 5-1-2      | 24-9-3     | 6-2-4      | 4-0-2      | DNP        | 0-0-0      | 24-2-3     |
| at Saint Mary's (CA)  | 1/12/19  | 74-73 | w | 12-6-3     | 20-5-5     | 4-2-0      | 3-2-3      | DNP        | DNP        | 25-2-1     |
| GONZAGA               | 01/17/19 | 70-68 | w | 14-1-4     | 17-5-2     | 3-1-0      | 8-3-2      | DNP        | 0-0-0      | 12-0-2     |
| PORTLAND              | 01/19/19 | 79-71 | w | 13-3-3     | 11-5-10    | 2-3-1      | 16-2-0     | DNP        | 3-2-0      | 15-2-3     |
| at San Diego          | 1/26/19  | 65-56 | w | 8-3-3      | 17-4-2     | 8-6-0      | 3-1-5      | DNP        | 0-1-0      | 13-1-1     |
| at LMU                | 1/31/19  | 58-61 | L | 8-5-5      | 5-2-4      | 4-4-1      | 2-3-0      | DNP        | 0-0-0      | 16-3-6     |
| at Pepperdine         | 02/02/19 | 65-79 | L | 7-5-2      | 6-7-3      | 13-6-2     | 4-2-1      | 0-0-0      | 2-2-0      | 11-0-2     |
| SAINT MARY'S (CA)     | 02/07/19 | 75-78 | L | 9-2-6      | 13-4-4     | DNP        | 0-1-2      | DNP        | 11-4-3     | 20-3-3     |
| PACIFIC               | 02/09/19 | 75-49 | w | 13-2-3     | 18-6-3     | DNP        | 2-4-1      | 0-1-0      | 3-1-2      | 17-5-4     |
| at Portland           | 02/14/19 | 70-69 | w | 24-7-2     | 19-9-6     | DNP        | 0-1-1      | DNP        | 0-0-2      | 16-6-7     |
| at No. 13/12 Gonzaga  | 02/16/19 | 66-64 | w | 14-3-5     | 19-3-3     | DNP        | 2-0-1      | DNP        | 8-1-3      | 12-4-4     |
| SAN DIEGO             | 02/23/19 | 80-68 | w | 19-2-4     | 19-3-6     | 0-1-0      | 4-0-2      | 0-0-0      | 2-1-0      | 16-6-5     |
| SAN FRANCISCO         | 02/28/19 | 82-59 | w | 13-1-1     | 16-3-3     | 2-2-1      | 10-1-1     | 7-0-0      | 0-2-2      | 15-3-4     |
| SANTA CLARA           | 03/02/19 | 69-64 | w | 6-2-3      | 14-10-7    | 2-2-0      | 0-0-0      | DNP        | 8-8-2      | 17-9-2     |
| vs Pepperdine         | 03-11-19 | 68-63 | w | 10-3-5     | 17-8-2     | 6-1-0      | 0-0-0      | DNP        | 2-3-1      | 20-4-5     |

| Opponent              | Date     | Score |   | 14         | 15         | 21         | 22         | 24         | 32         | 33         |
|-----------------------|----------|-------|---|------------|------------|------------|------------|------------|------------|------------|
|                       |          |       |   | UGWU,BABAL | VALGARDSON | TAITO,KHAE | HAMSON,SAR | BECKSTRAND | GLANTZ,SIG | MOODY,JASM |
| UC RIVERSIDE          | 11/09/18 | 72-70 | w | DNP        | 0-0-0      | DNP        | DNP        | DNP        | DNP        | 6-8-0      |
| CALIFORNIA            | 11/13/18 | 52-70 | L | DNP        | 5-1-0      | DNP        | DNP        | 0-0-0      | DNP        | 8-4-0      |
| EASTERN WASH.         | 11/17/18 | 80-65 | w | 7-2-0      | 3-0-1      | DNP        | 0-3-2      | 2-0-0      | 0-0-0      | 7-1-0      |
| at Utah State         | 11/20/18 | 62-57 | w | 0-3-0      | 0-0-0      | DNP        | 2-1-0      | DNP        | DNP        | 6-5-2      |
| vs TCU                | 11-23-18 | 61-58 | w | 3-5-0      | 0-1-1      | DNP        | 4-8-2      | DNP        | DNP        | 6-10-0     |
| vs California Baptist | 11-24-18 | 76-69 | w | 2-3-1      | 0-0-0      | DNP        | 0-2-0      | 0-1-0      | DNP        | 2-5-0      |
| at Southern Utah      | 11/27/18 | 64-67 | L | 5-2-0      | 3-2-0      | DNP        | 2-4-1      | 0-0-0      | 0-1-0      | 0-3-0      |
| at Utah Valley        | 11/29/18 | 77-51 | w | 6-3-0      | 0-0-0      | DNP        | 8-6-0      | 6-2-1      | 2-0-1      | 7-4-0      |
| at Utah               | 12/08/18 | 67-78 | L | 3-3-1      | DNP        | DNP        | 4-5-0      | DNP        | 0-0-0      | 4-3-0      |
| COLORADO ST.          | 12/15/18 | 51-42 | w | 0-5-0      | 0-4-0      | DNP        | 0-6-1      | 0-0-0      | DNP        | 3-5-0      |
| NORTHERN COLO.        | 12/21/18 | 70-50 | w | 10-6-0     | 0-1-0      | DNP        | 0-6-0      | 0-1-0      | 0-0-0      | 10-6-2     |
| at Santa Clara        | 12/29/18 | 54-44 | w | 4-6-0      | 0-0-0      | DNP        | 4-6-0      | 0-1-0      | DNP        | 7-1-1      |
| at San Francisco      | 12/31/18 | 67-59 | w | 6-0-0      | 3-1-1      | DNP        | 4-5-1      | DNP        | DNP        | 8-7-1      |
| PEPPERDINE            | 01/03/19 | 83-58 | w | 0-0-1      | 0-1-1      | DNP        | 2-10-2     | 4-0-0      | DNP        | 6-8-0      |
| LOYOLA MARYMOUNT      | 01/05/19 | 55-44 | w | 4-7-0      | DNP        | DNP        | 4-5-0      | 0-0-0      | DNP        | 2-7-0      |
| at Pacific            | 1/10/19  | 77-74 | w | 0-2-0      | DNP        | DNP        | 6-3-1      | DNP        | DNP        | 8-9-0      |
| at Saint Mary's (CA)  | 1/12/19  | 74-73 | w | 4-5-0      | DNP        | DNP        | 2-4-2      | 0-0-0      | DNP        | 4-5-0      |
| GONZAGA               | 01/17/19 | 70-68 | w | 4-0-0      | DNP        | DNP        | 6-6-3      | DNP        | DNP        | 6-10-1     |
| PORTLAND              | 01/19/19 | 79-71 | w | 8-2-1      | DNP        | DNP        | 3-6-0      | DNP        | DNP        | 8-6-0      |
| at San Diego          | 1/26/19  | 65-56 | w | 1-2-1      | DNP        | DNP        | 2-9-2      | DNP        | DNP        | 13-12-0    |
| at LMU                | 1/31/19  | 58-61 | L | 4-0-0      | DNP        | DNP        | 6-11-0     | DNP        | DNP        | 13-6-2     |
| at Pepperdine         | 02/02/19 | 65-79 | L | 10-3-0     | 5-1-0      | DNP        | 2-6-1      | 1-1-2      | 0-1-0      | 4-1-0      |
| SAINT MARY'S (CA)     | 02/07/19 | 75-78 | L | 6-7-0      | 0-0-0      | DNP        | 4-0-0      | DNP        | 0-0-0      | 12-7-0     |
| PACIFIC               | 02/09/19 | 75-49 | w | 5-8-0      | 0-3-0      | 0-0-0      | 7-3-0      | 8-1-0      | 2-2-0      | 0-3-0      |
| at Portland           | 02/14/19 | 70-69 | w | 0-2-1      | DNP        | DNP        | 2-8-1      | DNP        | DNP        | 9-7-0      |
| at No. 13/12 Gonzaga  | 02/16/19 | 66-64 | w | 2-2-0      | DNP        | DNP        | 5-9-0      | DNP        | DNP        | 4-3-0      |
| SAN DIEGO             | 02/23/19 | 80-68 | w | 4-3-0      | 0-0-0      | 0-0-0      | 12-5-0     | 2-0-0      | 0-0-0      | 2-5-1      |
| SAN FRANCISCO         | 02/28/19 | 82-59 | w | 2-2-0      | 0-2-0      | 0-0-0      | 9-12-1     | 2-2-0      | 0-2-0      | 6-6-0      |
| SANTA CLARA           | 03/02/19 | 69-64 | w | 0-0-0      | DNP        | DNP        | 18-7-2     | DNP        | DNP        | 4-5-0      |
| vs Pepperdine         | 03-11-19 | 68-63 | w | 0-0-1      | DNP        | DNP        | 10-5-0     | DNP        | DNP        | 3-2-0      |