

Career Highlights

- 346-132 overall record (second all-time at BYU in wins) for a BYU record .724 winning percentage
- Seventh among active coaches in the NCAA in career winning percentage
- Reached 300 career victories in his 407th game as a head coach, tied for 25th fastest in NCAA history
- Reached 200 career victories in his 259th game as a head coach, 15th fastest in NCAA history
- With 329 victories through 13 seasons is sixth all-time for best career starts by wins in NCAA history
- With 305 victories through 12 seasons is sixth all-time for best career starts by wins in NCAA history
- With 283 victories through 11 seasons is tied for fifth all-time for best career starts by wins in NCAA history
- With 257 victories through 10 seasons is sixth all-time for best career starts by wins in NCAA history
- With 232 victories through nine seasons is fifth all-time for best career starts by wins in NCAA history
- With 209 victories through first eight seasons is fourth all-time for best career starts by wins in NCAA history
- With 185 victories through first seven seasons is fourth all-time for best career starts by wins in NCAA history
- Streak of 13-consecutive 20-win seasons is tied for sixth all-time in NCAA history and the fifth longest current streak
- Four Mountain West Conference regular season titles, a BYU record
- Three-time MWC Coach of the Year (2006, 2007, 2011)
- Two-time USBWA District VIII Coach of the Year (2006, 2011)
- Naismith Coach of the Year Finalist (2011)
- Honorable Mention for National Coach of the Year by Scout.com (2006)
- Eight trips to the NCAA tournament (a BYU record), including six-consecutive trips from 2007 to 2012 (a BYU record) and back-to-back appearances in 2014 and 2015
- Six-consecutive 25-win seasons (2006-11), 13-consecutive 20-win seasons and 13-straight trips to the postseason (NCAA or NIT), all BYU records
- Holds top two spots for wins in a season in BYU history with 32 in 2010-11 and 30 in 2009-10
- Took BYU to the Sweet 16 in 2011 for the first time since 1981
- Coached Jimmer Fredette, the 2011 Consensus National Player of the Year
- Coached five conference players of the year (Keena Young, Lee Cummond, Jimmer Fredette, Tyler Haws, Kyle Collinsworth)
- Inducted into the Dixie State Athletics Hall of Fame on Sept. 14, 2013



Coaching Experience

- BYU Head Coach (2005-present)
- BYU Associate Head Coach (2000-2005)
- BYU Assistant Coach (1997-2000)
- Dixie State Head Coach (1990-1997)
- Dixie State Assistant Coach (1987-1990)
- Assistant coach at Pine View High School (1986-1987)
- Head coach at Millard High School (1983-1986)

Service

- Won the 2018 ESPN INFINITI Coaches' Charity Challenge to raise more than \$100,000 for the BYU Simmons Center for Cancer Research, which created the David and Cheryl Rose Family Student Cancer Research Endowment, a fellowship for BYU students conducting cancer research
- A member of the National Coaches vs. Cancer Council
- NABC Game Pillar Award for Service in 2008
- 63rd recipient of the Dale Rex Memorial Award
- Honorary Chair of the Mac's Gift Children's Cancer Foundation
- Lobbied before Congress for more funding for cancer research in September 2010

Education

- Houston (1983, B.A.)

Playing Career

- Played baseball and basketball at Dixie State College
- Played for Houston from 1980-83 (played in 1980-81 and 82-83, redshirted in 1981-82)
- Co-captain on the famous "Phi Slama Jama" team that featured Hakeem (then Akeem) Olajuwon and Clyde Drexler
- Helped Houston achieve a No. 1 ranking and reach the national championship game in 1983

Mission

- Manchester England (1977-79)

Personal/Family

- Wife: Cheryl
- Children: Daughter Chanell and husband Brock Reichner, son Garrett and wife Brooke, daughter Taylor and husband William
- Dave and Cheryl Rose have eight grandchildren

ROSE'S BYU COACHING LEDGER

Season	Overall	Pct.	Home	Pct.	Away	Pct.	Neutral	Pct.	Conf.	Pct.	Tourney	NCAA/NIT
05-06	20-9	.690	14-1	.933	5-7	.417	1-1	.500	12-4	.750	0-1	0-1 NIT
06-07	25-9	.735	17-0	1.000	6-7	.462	2-2	.500	13-3	.813	2-1	0-1 NCAA
07-08	27-8	.771	16-0	1.000	8-5	.615	3-3	.500	14-2	.875	2-1	0-1 NCAA
08-09	25-8	.758	14-2	.875	9-3	.750	2-3	.400	12-4	.750	1-1	0-1 NCAA
09-10	30-6	.833	15-1	.938	10-4	.714	5-1	.833	13-3	.813	1-1	1-1 NCAA
10-11	32-5	.865	13-1	.929	10-1	.909	9-3	.750	14-2	.875	2-1	2-1 NCAA
11-12	26-9	.743	13-3	.813	8-3	.727	5-3	.625	12-4	.750	1-1	1-1 NCAA
12-13	24-12	.667	15-3	.833	7-5	.583	2-4	.333	10-6	.625	0-1	3-1 NIT
13-14	23-12	.657	14-1	.933	5-8	.385	4-3	.571	13-5	.722	2-1	0-1 NCAA
14-15	25-10	.714	13-3	.813	8-3	.727	4-4	.500	13-5	.722	2-1	0-1 NCAA
15-16	26-11	.703	16-2	.889	6-6	.500	4-3	.571	13-5	.722	1-1	3-1 NIT
16-17	22-12	.647	14-4	.778	5-4	.556	3-4	.429	12-6	.667	1-1	0-1 NIT
17-18	24-11	.686	13-3	.813	7-6	.538	4-2	.667	11-7	.611	2-1	0-1 NIT
18-19	17-10	.630	12-2	.857	4-7	.363	1-1	.500	9-3	.750	—	—
Totals	346-132	.724	199-26	.884	98-69	.587	49-37	.570	171-59	.743	18-13	10-13

CURRENT MOST CONSECUTIVE DIVISION I 20-WIN SEASONS

Coach, School	Years	No.
Mike Krzyzewski, Duke	1997-2018	22
Bill Self, Tulsa, Illinois, Kansas	1999-2018	20
Mark Few, Gonzaga	2000-2018	19
Roy Williams, North Carolina	2005-2018	14
Dave Rose, BYU	2006-2018	13

BEST CAREER STARTS BY WINS, 13 SEASONS

Coach, School	Date	W	L	Pct.
Roy Williams, Kansas	1989-01	355	89	.800
Thad Matta, Butler, Xavier, OSU	2001-13	352	104	.772
Mark Few, Gonzaga	2000-12	342	90	.792
Sean Miller, Xavier, Arizona	2005-17	340	113	.751
Jamie Dixon, Pittsburgh	2004-16	328	123	.727
Dave Rose, BYU	2006-18	329	122	.729
Everett Case, NC State	1947-59	320	81	.798
Denny Crum, Louisville	1972-84	319	89	.782
Jim Boeheim, Syracuse	1977-89	317	101	.758
Tubby Smith, Tulsa, Georgia, Kentucky	1992-04	315	114	.734

ROSE'S MILESTONE VICTORIES

Win	Date	Opponent	Score	Record
25	12/06/06	San Jose State	81-69	25-11 (.694)
50	11/23/07	vs. No. 6 Louisville	78-76	50-18 (.735)
75	11/20/08	North Florida	74-41	75-26 (.743)
100	11/20/09	at Hawaii	83-65	100-34 (.746)
125	03/06/10	at TCU	107-77	125-38 (.767)
150	02/09/11	at Air Force	90-52	150-42 (.781)
175	01/16/12	at San Diego	82-63	175-49 (.781)
200	01/19/13	San Diego	74-57	200-59 (.772)
225	02/06/14	Santa Clara	89-76	225-75 (.750)
250	02/07/15	at Loyola Marymount	87-68	250-86 (.744)
275	02/11/16	at San Francisco	114-89	275-96 (.741)
300	02/04/17	Portland	73-62	300-107 (.737)
325	02/10/18	San Francisco	75-73 (OT)	325-118 (.734)

QUICK FACTS

University Information

Location: Provo, Utah 84602
 Elevation: 4,553 feet
 Enrollment: 33,517 (Daytime)
 Founded: October 15, 1875
 Owned: The Church of Jesus Christ of Latter-day Saints
 Nickname: Cougars
 Mascot: Cosmo
 Colors: Blue and White
 Arena (capacity): Marriott Center (18,987)
 Conference: West Coast Conference
 President: Kevin J Worthen (BYU, 1979)
 Athletic Director: Tom Holmoe (BYU, 1983)
 Athletic Website: BYUcougars.com
 Tickets: (801) 422-BYU1 or (800) 322-BYU1

2018-19 Preview

Lettermen Returning/Lost: 10/4
 Newcomers: 3
 Returning Redshirts: 2
 Starters Returning/Lost: 5/1
 Returning Scoring: 71.2% (1,850 of 2,600)
 Returning Rebounding: 67.2% (769 of 1,145)
 Returning Assists: 82.0% (437 of 533)
 Returning Blocks: 75.2% (100 of 133)
 Returning Minutes: 78.7% (5,568 of 7,075)

2017-18 Review

Overall Record: 24-11
 H/A/N Record: 13-3/7-6/4-2
 Conference Record/Finish: 11-7 (3rd)
 2018 Postseason: (0-1 in the NIT)
 First Round: at Stanford – L, 83-86
 2018 Final National Ranking: NR/NR

BYU Coaching Staff

Head Coach: Dave Rose
 Alma Mater (year): Houston (1983)
 Record at School (years): 346-132 (14th year)
 Career Division I Record (years): same
 Assistant Head Coach
 Tim LaComb (Utah, 2006)
 Assistant Coach
 Quincy Lewis (Wagner, 1993)
 Assistant Coach
 Lee Cummard (BYU, 2009)
 Dir. of Basketball Operations: Andrew May (BYU, 2010)

BYU History

First Year of Basketball: 1903
 All-Time Record: 1826-1093 (.625)
 Winning Seasons: 91 (last 2017-18)
 Regular Season Conf. Championships: 29 (last 2010-11)
 Postseason Appearances (record): 43 (33-44)
 Total NCAA Appearances (record): 29 (15-32)
 Last NCAA Appearance: 2015
 First Round: L vs. No. 11 seed Ole Miss, 90-94
 Total NIT Appearances (Record): 14 (18-11)
 Last NIT Appearance: 2018
 First Round: L at No. 3 seed Stanford, 86-89

Media Relations

Men's Basketball Contact: Kyle Chilton
 Cell Phone: 801-372-2080
 Office Phone: 801-422-4909
 Email: kyle_chilton@byu.edu

Media Information

Radio Station: BYU Sports Network
 BYU Radio – Sirius XM 143/89.1 FM HD2
 KSL 102.7 FM and 1160 AM
 Play-By-Play Announcer: Greg Wrubell
 Beat Writers: Jeff Call, Deseret News
 Darnell Dickson, Daily Herald
 Jay Drew, Salt Lake Tribune

2018-19 BYU STARTING LINEUPS

Opponent	(1)	(2)	(3)	(4)	(5)
at Nevada	Jahshire Hardnett	TJ Haws	Zac Seljaas	Yoeli Childs	Dalton Nixon
Utah Valley	Jahshire Hardnett	TJ Haws	Zac Seljaas	Yoeli Childs	Luke Worthington
Northwestern State	Jahshire Hardnett	TJ Haws	Zac Seljaas	Yoeli Childs	Dalton Nixon
Oral Roberts	Jahshire Hardnett	TJ Haws	Zac Seljaas	Yoeli Childs	Dalton Nixon
Alabama A&M	Jahshire Hardnett	TJ Haws	Zac Seljaas	Yoeli Childs	Dalton Nixon
Rice	Jahshire Hardnett	TJ Haws	Zac Seljaas	Yoeli Childs	Dalton Nixon
Houston	Jahshire Hardnett	TJ Haws	Zac Seljaas	Yoeli Childs	Dalton Nixon
at Illinois State	Jahshire Hardnett	TJ Haws	Zac Seljaas	Yoeli Childs	Dalton Nixon
at Weber State	Jahshire Hardnett	TJ Haws	Zac Seljaas	Yoeli Childs	Dalton Nixon
Utah State	Jahshire Hardnett	TJ Haws	Zac Seljaas	McKay Cannon	Yoeli Childs
vs. Utah	Jahshire Hardnett	TJ Haws	Zac Seljaas	Yoeli Childs	Connor Harding
Portland State	Jahshire Hardnett	TJ Haws	Zac Seljaas	Yoeli Childs	Connor Harding
vs. UNLV	Jahshire Hardnett	TJ Haws	Zac Seljaas	Yoeli Childs	Connor Harding
at San Diego State	Jahshire Hardnett	TJ Haws	Zac Seljaas	Yoeli Childs	Connor Harding
at Mississippi State	Jahshire Hardnett	TJ Haws	Zac Seljaas	Yoeli Childs	Connor Harding
at Pacific	TJ Haws	McKay Cannon	Connor Harding	Yoeli Childs	Luke Worthington
at Saint Mary's	TJ Haws	McKay Cannon	Connor Harding	Yoeli Childs	Luke Worthington
Portland	TJ Haws	McKay Cannon	Connor Harding	Yoeli Childs	Luke Worthington
Santa Clara	TJ Haws	McKay Cannon	Connor Harding	Yoeli Childs	Luke Worthington
at Pepperdine	TJ Haws	McKay Cannon	Connor Harding	Yoeli Childs	Luke Worthington
at San Francisco	TJ Haws	McKay Cannon	Connor Harding	Yoeli Childs	Luke Worthington
Saint Mary's	TJ Haws	McKay Cannon	Connor Harding	Yoeli Childs	Luke Worthington
Gonzaga	TJ Haws	McKay Cannon	Connor Harding	Yoeli Childs	Luke Worthington
Loyola Marymount	TJ Haws	McKay Cannon	Connor Harding	Yoeli Childs	Gavin Baxter
at Portland	TJ Haws	McKay Cannon	Nick Emery	Yoeli Childs	Gavin Baxter
Pacific	TJ Haws	McKay Cannon	Nick Emery	Yoeli Childs	Gavin Baxter
at San Diego	TJ Haws	McKay Cannon	Nick Emery	Yoeli Childs	Gavin Baxter
at Loyola Marymount					
San Francisco					
at Gonzaga					
San Diego					
Won-Loss Records	(1)	(2)	(3)	(4)	(5)
4-4	Jahshire Hardnett	TJ Haws	Zac Seljaas	Yoeli Childs	Dalton Nixon
1-0	Jahshire Hardnett	TJ Haws	Zac Seljaas	McKay Cannon	Yoeli Childs
1-0	Jahshire Hardnett	TJ Haws	Zac Seljaas	Yoeli Childs	Luke Worthington
2-3	Jahshire Hardnett	TJ Haws	Zac Seljaas	Yoeli Childs	Connor Harding
5-3	TJ Haws	McKay Cannon	Connor Harding	Yoeli Childs	Luke Worthington
1-0	TJ Haws	McKay Cannon	Connor Harding	Yoeli Childs	Gavin Baxter
3-0	TJ Haws	McKay Cannon	Nick Emery	Yoeli Childs	Gavin Baxter

GAMES PLAYED (RECORD)

	2018-19	Career
Luke Worthington	27 (17-10)	126 (86-40)
Zac Seljaas	27 (17-10)	97 (65-32)
Nick Emery	18 (12-6)	88 (59-29)
TJ Haws	27 (17-10)	96 (63-33)
Yoeli Childs	27 (17-10)	95 (62-33)
Dalton Nixon	22 (13-9)	72 (48-24)
Jahshire Hardnett	20 (11-9)	55 (35-20)
McKay Cannon	27 (17-10)	56 (37-19)
Rylan Bergersen	24 (15-9)	48 (30-18)
Evan Troy	10 (8-2)	22 (18-4)
Gavin Baxter	26 (16-10)	26 (16-10)
Connor Harding	27 (17-10)	27 (17-10)
Kolby Lee	15 (11-4)	15 (11-4)
Taylor Maughan	12 (9-3)	12 (9-3)

GAMES STARTED (RECORD)

	2018-19	Career
TJ Haws	27 (17-10)	96 (63-33)
Nick Emery	3 (3-0)	68 (47-21)
Yoeli Childs	27 (17-10)	87 (56-31)
Luke Worthington	9 (5-4)	62 (43-19)
Jahshire Hardnett	16 (9-7)	48 (31-17)
Zac Seljaas	15 (8-7)	27 (17-10)
Dalton Nixon	8 (4-4)	10 (5-5)
McKay Cannon	13 (10-3)	13 (10-3)
Connor Harding	14 (8-6)	14 (8-6)
Gavin Baxter	4 (4-0)	4 (4-0)

STREAKS

	2018-19	Overall
Streak		
Current won/loss streak	4 wins	same
At home	2 wins	same
On the road	2 wins	same
On a neutral floor	1 loss	same
At home vs. Nonconference	2 wins	same
At home vs. WCC	2 wins	same
On the road vs. Nonconference	5 losses	6 losses
On the road vs. WCC	2 wins	same
On a neutral floor vs. Nonconference	1 loss	same
On a neutral floor vs. WCC	–	1 loss
At regular season tournament	1 loss	same
At WCC Tournament	–	2 wins
NCAA Tournament	–	3 losses
At NIT	–	3 losses
Games with a 3-point make	27 games	180 games
Vs. in-state teams	2 wins	same
At home vs. in-state teams	2 wins	4 wins
On the road vs. in-state teams	1 loss	same
On a neutral floor vs. in-state teams	1 win	6 wins

LEADS AND DEFICITS, BYU'S BIGGEST...

Halftime lead	22 (46-24 vs. Alabama A&M, 11/17/18)
Halftime lead lost in defeat	9 (40-31 at Illinois State, 11/28/18)
Halftime deficit	17 (vs. UNLV, vs. Gonzaga)
Halftime deficit erased in victory	9 (30-39 at San Diego, 02/14/19)
Overall lead	40 (89-49 vs. Alabama A&M, 11/17/18)
Margin of victory	35 (83-48 at Portland, 02/09/19)
Margin of defeat	30 (63-93 vs. Gonzaga, 01/31/19)
Lead lost in defeat	14 (52-38 at Illinois State, 11/28/18)
Overall deficit	36 (64-100 at Miss. State, 12/29/18)
Deficit overcome in victory	14 (37-51 at San Diego, 02/14/19)

Rose vs. the state

BYU basketball coach Dave Rose has compiled a record of 43-11 vs. in-state opponents (3-1 in 2018-19) since taking over in 2005-06, good for a win percentage of 79.6. This season, the Cougars won at home against Utah Valley and Utah State, defeated Utah at Vivint Smart Home Arena and lost at Weber State.

Opponent	W	L	Opponent	W	L	Opponent	W	L
Utah	14	6	Weber State	13	1	Utah Valley	3	1
Utah State	10	3	Southern Utah	3	0			

AWARDS CANDIDATES

Yoeli Childs

- Has 14 double-doubles, 15 20-point games and three 30-point games in 2018-19
- Named the Dec. 10 WCC Player of the Week and NCAA.com March Madness Player of the Week
- Named the Jan. 14 WCC Player of the Week
- Named to the mid-season watch lists for the Lute Olson Player of the Year and the Lou Henson Mid-Major Player of the Year awards
- Named to the Men Against Breast Cancer Cougar Cup All-Tournament Team
- Named to the Preseason All-WCC Team
- One of 10 candidates for the 2019 Karl Malone Power Forward of the Year Award
- Scored 31 points in three-straight games (Weber State, Utah State and Utah), the first Cougar to do so since Jimmer Fredette scored 30-plus in the final five games of the 2010-11 season
- Scored in double figures in 29-straight games – the last six of 2017-18 and first 23 of 2018-19
- Has season highs of 31 points, 16 rebounds, 6 assists, 5 steals and 3 blocks

TJ Haws

- Has led BYU in assists 20 times, has scored in double figures 20 times and has totaled 20-plus points eight times in 2018-19
- Scored a career-high 34 points at Pepperdine while adding seven rebounds, eight assists and two steals
- Hit 18 of 22 from the free-throw line at Pepperdine, the second most makes and second most attempts in a single game in BYU history
- Scored 30 points on 9 of 15 shooting from the field, 5 of 10 from 3-point range vs. Portland State
- Season highs of 34 points, 8 rebounds, 8 assists, 3 steals and 2 blocks
- Has posted five-plus assists 15 times
- Received All-WCC Honorable Mention in 2017-18
- Named to the WCC All-Academic Team
- Received Bronze Honors on the WCC Commissioner's Honor Roll
- Received the Playmaker Award at the end of season banquet

Cougars sign three to NLI's

During the November signing period, the Cougars signed three players to National Letters of Intent: Da Silva, Nate Hansen and Shengzhe Li.

A 6-foot-9 forward from Brazil, Da Silva plays for Dave Evans at Wasatch Academy in Mount Pleasant, Utah. In 2017-18, he helped lead the Tigers to a 24-2 record, including a 12-game win streak to end the season. Da Silva also plays for the Utah Mountain Stars, coached by former Cougars Marty Haws and Kevin Nixon. During the summer of 2018, he averaged 14.8 points, 8.9 rebounds and 2.3 blocks.

Hansen hails from Provo, Utah, and plays for former Cougar Kevin Santiago at Timpview High School. In 2017-18, the 6-foot-3 guard helped lead the T-Birds to a record of 17-7 overall and 8-2 in region play while averaging 15.1 points and draining 53 3-pointers. He scored in double figures 18 times, had 20-plus points six times and registered season highs of 30 points, nine assists, eight steals and six 3-point field goals. Hansen plays for the Utah Mountain Stars and plans to serve a mission following high school.

Originally from Shanghai, China, Li plays for former BYU assistant Jeff Reinert at Santa Margarita Catholic in Santa Margarita, California. A 6-foot-10 center, Li averaged 6.8 points and 5.6 rebounds while helping Santa Margarita to a record of 20-10 in 2017-18. Prior to playing for Santa Margarita, Li played two years in Spain for the Canarias Basketball Academy in Las Palmas. He also plays for the Pump N Run club during the AAU season.

NOTES AND STORYLINES

Dave Rose

BYU head coach Dave Rose has led the Cougars to one of the most successful eras in program history since taking over in 2005. His career record of 346-132 ranks him second in BYU history in total victories and first in winning percentage (.724). Rose has been named conference coach of the year three times, led the Cougars to four conference titles, eight NCAA tournament appearances, five NIT appearances, eight 25-win seasons and 13 20-win seasons. On Nov. 6, 2018, BYU announced Rose signed a contract extension through the 2020-21 season.

Rose wins off the court

Rose won the 2018 ESPN INFINITI Coaches' Charity Challenge, raising more than \$100,000 for the BYU Simmons Center for Cancer Research. The Simmons Center in turn created the David and Cheryl Rose Family Student Cancer Research Endowment, a fellowship for BYU students conducting cancer research.

Rose among the nation's best

Dave Rose is seventh in career win percentage among active NCAA Division I head coaches (as of 2/14/19).

Rk	Coach	Yrs.	W	L	Pct.	Rk	Coach	Yrs.	W	L	Pct.
1	Mark Few, Gonzaga	20	559	120	.8233	9	Tom Izzo, Michigan State	24	594	230	.7209
2	Roy Williams, North Carolina	31	861	232	.7877	10	Greg Marshall, Wichita State	21	492	192	.7193
3	John Calipari, Kentucky	27	698	206	.7721	11	Tony Bennett, Virginia	13	309	121	.7186
4	Mike Krzyzewski, Duke	44	1122	340	.7674	12	Bruce Pearl, Auburn	24	548	215	.7182
5	Bill Self, Kansas	26	673	207	.7648	13	Jim Boeheim, Syracuse	43	943	379	.7133
6	Sean Miller, Arizona	15	381	132	.7427	14	Jamie Dixon, TCU	16	390	157	.7130
7	Dave Rose, BYU	14	346	132	.7238	15	Bob Huggins, West Virginia	37	855	355	.7066
8	Ray Harper, Jacksonville State	19	395	151	.7234						

Missions

Ten of BYU's players and five members of the coaching staff have served missions for The Church of Jesus Christ of Latter-day Saints. See the list below:

Players	Players	Coaches
Gavin Baxter: Washington, D.C.	Taylor Maughan: Oklahoma	Dave Rose: England
McKay Cannon: Chile	Dalton Nixon: Massachusetts	Tim LaComb: Massachusetts
Nick Emery: Germany	Zac Seljaas: Iowa	Andrew May: Washington, D.C.
Connor Harding: Georgia	Jesse Wade: France	Lee Cummond: Tennessee
TJ Haws: France	Luke Worthington: Chile	Nate Austin: Texas

Childs star all grown up

In two years with the Cougars, Yoeli Childs has made his mark on the BYU record book. He is currently climbing the rankings in points scored, blocks per game, total blocks, field goal percentage, total rebounds and rebounds per game. See complete rankings on page 6.

Four star additions

BYU added four players to the roster that were four star recruits coming out of high school. Gavin Baxter (class of 2016), Connor Harding (2016) and Kolby Lee (2017) are all freshmen who were all ranked four-star recruits by ESPN.com. Baxter and Harding are coming off two-year missions while Lee was a redshirt in 2017-18. The Cougars also welcome sophomore Jesse Wade, who was a four-star recruit in the class of 2015. He served a mission before playing his freshman season at Gonzaga in 2017-18. Wade will sit out this season due to NCAA transfer rules.

Cougars with 1,000 points

In 2016-17, junior guard Nick Emery became the 50th player in Cougar history to score 1,000 career points. He also joined Tyler Haws, Danny Ainge and Eric Mika as the only BYU players to reach 1,000 career points as sophomores. Junior Yoeli Childs reached the milestone on Nov. 15 in BYU's win over Oral Roberts, becoming the 51st player in BYU history and 15th under Dave Rose to reach the milestone. TJ Haws became the 52nd Cougar and 16th under Rose to reach 1,000 career points at Illinois State on Nov. 28. The 16 players who have reached 1,000 points under Rose include the all-time leading scorer in Tyler Haws and the No. 2 scorer in Jimmer Fredette.

Tyler (2,720 points) and TJ Haws (1,323) are the third set of brothers to both reach 1,000 career points, joining Jackson (1,235) and Nick Emery (1,135) and Fred (1,841) and Ken Roberts (1,652). The Haws brothers are joined by their father Marty (1,337), who was also a 1,000-point scorer at BYU.

100 career 3-pointers

Junior guard TJ Haws reached 100 career 3-pointers in BYU's win at San Francisco last season, becoming the 23rd Cougar to reach the milestone. Junior guard Nick Emery was the 22nd Cougar to reach 100 3-pointers. Haws was fourth fastest to 100 career 3s in terms of games played while Emery is second. Junior Zac Seljaas hit a season-best five 3-pointers against Alabama A&M to reach 100 career 3s in 75 games, 12th fastest in BYU history.

Rk	Name	Years	Career 3FG	Games to 100
1	Chase Fischer	2014-16	215	34
2	Nick Emery	2015-17, 18-19	193	38
3	Terrell Lyday	1999-01	127	49
4	TJ Haws	2016-19	175	50
5	Nick Sanderson	1991-93	129	51
6	Elijah Bryant	2016-18	100	53
7	Mark Bigelow	1998-99, 01-04	213	55
8	Jonathan Tavernari	2006-10	265	57
9	Matt Carlino	2011-14	157	64
10	Mike Rose	2003-07	163	69
11	Jimmer Fredette	2007-11	296	72
12	Zac Seljaas	2015-16, 17-19	128	75
13	Jackson Emery	2005-06, 08-11	230	79
14	Todd Christensen	1995-96, 98-00	104	80
15	Lee Cummond	2005-09	153	90

#Smith and Toolson played their freshman seasons (29 games) before the NCAA instituted the 3-point shot.



2018-19 WCC Standings (as of 2/14/19)

	Overall	Pct	WCC	Pct
Gonzaga	24-2	.923	11-0	1.000
BYU	17-10	.630	9-3	.750
San Francisco	19-6	.760	7-4	.636
Saint Mary's	16-10	.615	7-4	.636
San Diego	16-10	.615	5-6	.555
Loyola Marymount	17-9	.654	5-7	.417
Santa Clara	13-13	.500	5-7	.417
Pepperdine	12-14	.462	5-7	.417
Pacific	13-13	.500	3-8	.273
Portland	7-19	.269	0-11	.000

2018-19 WCC Players of the Week

Nov. 12	Rui Hachimura, Gonzaga
Nov. 19	James Batemon, Loyola Marymount
Nov. 26	Rui Hachimura, Gonzaga
Dec. 3	Josh Perkins, Gonzaga
Dec. 10	Yoeli Childs, BYU
Dec. 17	Anthony Townes, Pacific
Dec. 24	Trey Wertz, Santa Clara
Dec. 31	Ajare Sanni, Pacific
Jan. 7	Jade' Smith, Pepperdine
Jan. 14	Yoeli Childs, BYU
Jan. 21	Frankie Ferrari, San Francisco
Jan. 28	Colbey Ross, Pepperdine
Feb. 4	Rui Hachimura, Gonzaga
Feb. 11	Brandon Clarke, Gonzaga

2018-19 Preseason All-WCC Team

Player	School	Yr.	Pos.
James Batemon	Loyola Marymount	Sr.	G
Yoeli Childs	BYU	Jr.	F
KJ Feagin	Santa Clara	Sr.	G
Frankie Ferrari	San Francisco	Sr.	G
Jordan Ford	Saint Mary's	Jr.	G
Rui Hachimura	Gonzaga	Jr.	F
Zach Norvell Jr.	Gonzaga	So.	G
Josh Perkins	Gonzaga	Sr.	G
Isaiah Pineiro	San Diego	Sr.	F
Killian Tillie	Gonzaga	Jr.	F

2018-19 WCC Preseason Poll

Team (First Place Votes)	Points
1. Gonzaga (9)	81
2. Saint Mary's	68
3. BYU (1)	67
4. San Francisco	57
5. San Diego	52
6. Pacific	39
7. Loyola Marymount	31
8. Pepperdine	22
9. Santa Clara	18
10. Portland	15

TEAM	All	Conf
WCC Stats (as of 2/14/19)		
Scoring Offense	2	2
Scoring Defense	10	6
Scoring Margin	6	2
FT Percentage	7	7
FG Percentage	3	3
FG Percentage Defense	5	6
3FG Percentage	8	3
3FG Percentage Defense	9	9
3-Point FG Made/Game	7	4
Rebounding Offense	3	5
Rebounding Defense	9	8
Rebounding Margin	8	7
Blocked Shots	5	6
Assists	2	4
Steals	4	3
Turnover Margin	3	2
Assist/Turnover Ratio	2	2
Offensive Rebounds	7	T5
Defensive Rebounds	1	4
Defensive Reb Pct	6	7
Offensive Reb Pct	9	T6
NCAA Stats (as of 2/10/19)	Rank	Actual
Won-Lost Percentage	105	61.5
Scoring Offense	36	80.2
Scoring Defense	267	75.4
Scoring Margin	110	4.8
Field-Goal Percentage	51	47.3
Field-Goal Percentage Defense	160	43.4
Three-Point FGs Per Game	237	7.1
Three-Point FG Percentage	277	32.5
Three-Point FG Defense	263	35.7
Free-Throw Percentage	98	72.6
Rebound Margin	241	-1.0
Assists Per Game	47	15.5
Assist Turnover Ratio	16	1.43
Blocked Shots Per Game	196	3.1
Steals Per Game	188	6.3
Turnovers Per Game	23	10.9
Turnover Margin	72	2.1
Personal Fouls Per Game	289	19.6
Fewest Turnovers	66	283
Offensive Rebounds Per Game	275	8.77
Defensive Rebounds per Game	64	26.96
Turnovers Forced	212	13.0

INDIVIDUAL	Top BYU player - All	Rank	Top BYU player - Conf	Rank
WCC (as of 2/14/19)				
Scoring	Yoeli Childs	2	Yoeli Childs	2
Rebounding	Yoeli Childs	1	Yoeli Childs	2
FG Percentage	Yoeli Childs	10	—	—
Assists	TJ Haws	4	TJ Haws	4
FT Percentage	TJ Haws	4	TJ Haws	5
Steals	—	—	McKay Cannon	T4
3FG Percentage	—	—	McKay Cannon	1
3FG Made/Game	TJ Haws	10	TJ Haws	T15
Blocked Shots	Yoeli Childs	T6	Gavin Baxter	5
Assist/TO Ratio	TJ Haws	4	TJ Haws	2
Offensive Rebounds	Yoeli Childs	5	Yoeli Childs	6
Defensive Rebounds	Yoeli Childs	1	Yoeli Childs	2
Minutes Played	TJ Haws	9	Yoeli Childs	8
NCAA Stats (as of 2/10/19)	BYU Player	Rank	Actual	
Points Per Game	Yoeli Childs	32	21.0	
	TJ Haws	136	17.0	
Field-Goal Percentage	Yoeli Childs	86	52.0	
Free-Throw Percentage	TJ Haws	56	85.6	
Rebounds Per Game	Yoeli Childs	26	9.7	
Assists Per Game	TJ Haws	65	5.0	
Assist Turnover Ratio	TJ Haws	61	2.32	
Double-Doubles	Yoeli Childs	13	14	

No.	Name	Pos.	Ht.	Wt.	Yr.	Hometown (Previous School)
0	Jahshire Hardnett	G	6-0	185	Jr.	Gulfport, Mississippi (Chipola)
1	Rylan Bergersen	G	6-6	200	So.	Boise, Idaho (Link Year)
2	Zac Seljaas	G	6-7	215	Jr.	Bountiful, Utah (Bountiful HS)
4	Nick Emery	G	6-2	185	Jr.	Alpine, Utah (Lone Peak HS)
10	Jesse Wade	G	6-1	175	So.	Kaysville, Utah (Gonzaga)
13	Taylor Maughan	G	6-4	200	Jr.	Fullerton, California (BYU-Hawaii)
21	Evan Troy	G	6-5	180	Jr.	Longview, Washington (Mark Morris HS)
23	Yoeli Childs	F	6-8	225	Jr.	South Jordan, Utah (Bingham HS)
24	McKay Cannon	G	6-0	185	Sr.	Shelley, Idaho (Weber State)
25	Gavin Baxter	F	6-9	210	Fr.	Provo, Utah (Timpview HS)
30	TJ Haws	G	6-4	170	Jr.	Alpine, Utah (Lone Peak HS)
33	Dalton Nixon	F	6-7	215	Jr.	Orem, Utah (Orem HS)
40	Kolby Lee	F	6-9	240	Fr.	Meridian, Idaho (Rocky Mountain HS)
41	Luke Worthington	F	6-10	235	Sr.	Mequon, Wisconsin (Homestead HS)
44	Connor Harding	G	6-6	185	Fr.	Pocatello, Idaho (Highland HS)

Pronunciations
 YOELI CHILDS
 YO-lee
 JAHSIRE HARDNETT
 jaw-SHEER
 TAYLOR MAUGHAN
 MAWN
 ZAC SELJAAS
 SELL-yus
 LEE CUMMARD
 cuh-MAHRD
 ROBERT RAMOS
 RAY-mus
 ERICK SCHORK
 SH-ork

Head Coach: Dave Rose, 14th year (Houston, 1983)
 Assistant Head Coach: Tim LaComb (Utah, 2006)
 Assistant Coach: Quincy Lewis (Wagner, 1993)
 Assistant Coach: Lee Cummard (BYU, 2009)
 Graduate Assistant: Nate Austin (BYU, 2016)
 Director of Basketball Operations: Andrew May (BYU, 2010)
 Coordinator of Player Development: Garrett Faucette (BYU, 2008)
 Athletic Trainer: Robert Ramos (BYU, 1995)
 Strength and Conditioning Coach: Erick Schork (Springfield, 1995)

2018-19 SEASON AND CAREER HIGH					
#	Player		Points	Rebounds	Assists
0	Jahshire Hardnett	Season	24 at Weber State	4 (3x) last at Weber State	4 (2x) last vs. Oral Roberts
		Career	Same	8 (2x) last vs. Pacific (2017-18)	5 (2x) last at Santa Clara (2017-18)
1	Rylan Bergersen	Season	8 vs. Alabama A&M	4 vs. Portland State	3 vs. Rice
		Career	Same	4 (2x) last vs. Portland State (2018-19)	Same
2	Zac Seljaas	Season	15 vs. Alabama A&M	10 at Pepperdine	4 (2x) last at Illinois State
		Career	25 vs. Central Michigan (2015-16)	Same	5 (3x) last vs. Idaho State (2017-18)
4	Nick Emery	Season	17 vs. Loyola Marymount	4 (3x) last at Portland	6 vs. Portland State
		Career	37 vs. Utah Valley (2016-17)	9 vs. San Diego (2015-16)	7 vs. Mississippi Valley State (2015-16)
13	Taylor Maughan	Season	2 at Portland	1 (2x) last vs. Portland State	1 at San Diego State
		Career	—	Same	Same
21	Evan Troy	Season	2 vs. Oral Roberts	2 (2x) last at Portland	1 at Portland
		Career	2 (4x) last vs. Oral Roberts (2018-19)	Same	1 (3x) last at Portland (2018-19)
23	Yoeli Childs	Season	31 (3x) last vs. Utah	16 (2x) last at Illinois State	6 at Illinois State
		Career	33 vs. Saint Mary's (2018 WCC)	17 at San Francisco (2016-17)	8 at Santa Clara (2017-18)
24	McKay Cannon	Season	11 vs. Portland	4 vs. Portland	7 vs. Loyola Marymount
		Career	17 at Utah State (2017-18)	4 (2x) last vs. Portland (2018-19)	Same
25	Gavin Baxter	Season	25 vs. Loyola Marymount	10 vs. Loyola Marymount	3 vs. Pacific
		Career	Same	Same	Same
30	TJ Haws	Season	35 at San Diego	8 (2x) last at Illinois State	8 (3x) last at Pepperdine
		Career	Same	Same	8 (4x) last at Pepperdine (2018-19)
33	Dalton Nixon	Season	15 vs. Northwestern State	7 (2x) last at Illinois State	4 vs. Houston
		Career	15 (2x) last vs. Northwestern State (2018-19)	8 vs. UT Arlington (2017-18)	4 (3x) last vs. Houston (2018-19)
40	Kolby Lee	Season	5 (2x) last at San Diego State	2 (3x) last at San Diego State	1 vs. Oral Roberts
		Career	Same	Same	—
41	Luke Worthington	Season	13 vs. Santa Clara	6 (2x) last at Mississippi State	2 at Saint Mary's
		Career	16 at Gonzaga (2017-18)	6 (4x) last at Mississippi State (2018-19)	3 at Santa Clara (2017-18)
44	Connor Harding	Season	14 vs. Utah State	7 (2x) last vs. Rice	4 vs. Santa Clara
		Career	Same	Same	Same

GEOGRAPHIC BREAKDOWN	
California	Taylor Maughan
Idaho	Rylan Bergersen McKay Cannon Connor Harding Kolby Lee
Mississippi	Jahshire Hardnett
Utah	Gavin Baxter Yoeli Childs Nick Emery TJ Haws Dalton Nixon Zac Seljaas Jesse Wade
Washington	Evan Troy
Wisconsin	Luke Worthington

CLASS BREAKDOWN			
Seniors	Juniors	Sophomores	Freshmen
McKay Cannon Luke Worthington	Yoeli Childs Nick Emery Jahshire Hardnett TJ Haws Taylor Maughan Dalton Nixon Zac Seljaas Evan Troy	Rylan Bergersen Jesse Wade	Gavin Baxter Connor Harding Kolby Lee

#4 • NICK EMERY
6-2 • 185 • JR • GUARD



ALPINE, UTAH
LONE PEAK HS

2018-19 SEASON HIGHS

Table listing season highs for PTS (17 vs. Loyola Marymount), 1st H (6 vs. Utah State), 2nd H (14 vs. Loyola Marymount), REB (4 (2x) last at Pacific), AST (6 vs. Portland State), BLK (-), STL (4 vs. Loyola Marymount), FGM (6 vs. Loyola Marymount), FGA (10 vs. Loyola Marymount), 3PM (5 vs. Loyola Marymount), 3PA (6 at Portland), FTM (5 at Saint Mary's), FTA (6 at Saint Mary's), MIN (27 vs. Loyola Marymount).

CAREER HIGHS

Table listing career highs for PTS (37 (2x) last vs. Utah Valley), 1st H (20 (2x) last vs. Utah Valley), 2nd H (18 at Colorado), REB (9 vs. San Diego), AST (7 vs. MVSU), BLK (2 vs. Valparaiso), STL (5 (2x) last at Saint Mary's), FGM (15 vs. Utah Valley), FGA (28 vs. Utah Valley), 3PM (10 at San Francisco), 3PA (12 (2x) last vs. Utah Valley), FTM (7 (2x) last vs. LMU), FTA (8 at San Diego), MIN (40 vs. Gonzaga).

MISCELLANEOUS

Table listing miscellaneous stats: Double-Figure Points (3 (2-1) 55 (38-17)), 20-plus Points (- 19 (15-4)), Double-Figure Reb (- 0 (0-0)), Double-Doubles (- 0 (0-0)), 3-plus Steals (2 (2-0) 17 (11-6)), 3-plus Blocks (- 0 (0-0)), 3-plus 3-point FG (2 (2-0) 35 (22-13)), Scoring Leader (- 18 (13-5)), Rebound Leader (- 2 (2-0)), Assist Leader (2 (2-0) 11 (8-3)).

CAREER STATISTICS (ALL GAMES)

Table with 23 columns (Year, GP, GS, Min, Avg, FG, FGA, Pct, 3FG, FGA, Pct, FT, FTA, Pct, Off, Def, TR, Avg, PF, FO, A, TO, Blk, Stl, Pts, Avg) showing career totals for 2015-16, 2016-17, 2018-19, and TOTAL.

CAREER STATISTICS (CONFERENCE GAMES)

Table with 23 columns (Year, GP, GS, Min, Avg, FG, FGA, Pct, 3FG, FGA, Pct, FT, FTA, Pct, Off, Def, TR, Avg, PF, FO, A, TO, Blk, Stl, Pts, Avg) showing conference totals for 2015-16, 2016-17, 2018-19, and TOTAL.

2018-19 SEASON — PPG: 6.2 RPG: 1.5 APG: 1.7 BPG: 0.1 SPG: 1.1 FG%: .398 3FG%: .375 FT%: .727

2016-17 • Sophomore

- Named an NSCA Strength and Conditioning All-American Athlete of the Year
Received the Outstanding Defensive Player and Best Conditioned Perimeter Player Awards at the end of season banquet
A team captain
Became the fourth BYU player to reach 1,000 career points as a sophomore
Set a BYU record by hitting at least one 3-point field goal in 32-straight games from 2/20/16 to 1/28/17
Nationally was 93rd in total steals, 108th in steals per game, 136th in 3-point field goal attempts, 144th in 3-point field goals made and 204th in 3-point field goals per game
In the WCC was 2nd in free-throw percentage, 2nd in steals, 5th in 3-point field goals per game, T-14th in scoring and 15th in assists
Posted season highs of 37 points (Utah Valley), 8 rebounds (Princeton), 6 assists (Weber State), 5 steals (at Saint Mary's) and 5 3-point field goals (4 times)
Scored in double figures 20 times and had 20-plus points 8 times
Had 3-plus steals 8 times and 3-plus 3-pointers 13 times
Led the team in scoring 7 times and assists 4 times

- Nationally was 23rd in 3-point field goal attempts, 25th in 3-point field goals made, 45th in field goal attempts
Tied the BYU single-game record for 3-point field goals with 10 at San Francisco
Finished the 2015-16 season 4th all-time in 3-pointers in a single season at BYU, 3rd in games with 3-plus 3-pointers
Set the BYU freshman records for points in a single game, 3-pointers in a single game, games scoring in double figures, 3-point field goals and 3-point field goals per game

Before BYU

- A four-year starter for Quincy Lewis at Lone Peak High School
As a senior, helped lead Lone Peak to 26-1 record, the 2012-13 MaxPreps.com National Title and the 5A Utah state title
Averaged 17.9 points, 3.8 rebounds, 3.7 assists, 2.9 steals as a senior
Named a third-team All-American by MaxPreps.com
Named the 2012-13 Mr. Basketball by the Deseret News, the 5A MVP by the Salt Lake Tribune and the Utah Gatorade Player of the Year
As a junior averaged 21.6 points, 3.4 threes, 4.0 rebounds, 2.3 assists and 2.4 steals and led Lone Peak to a 22-3 record, the 5A state title

Personal

- Parents are Derek and Patti Emery
Has two brothers, Alex and Jackson, and one sister, Annie
Brother Jackson played at BYU (2005-06, 08-11) and is the program's all-time steals leader
Served a mission for The Church of Jesus Christ of Latter-day Saints in Germany

2015-16 • Freshman

- Named to the All-West Coast Conference Second Team and the All-WCC Freshman Team
Named the WCC Player of the Week (Feb. 15)
Named to the WCC All-Tournament Team
The College Sports Madness All-High Major Freshman of the Year

2018-19 GAME-BY-GAME

Large table listing game-by-game stats for 2018-19 season, including columns for Opponent, Date, GS, Min, FG, FGA, Pct, 3FG, FGA, Pct, FT, FTA, Pct, Off, Def, TR, Avg, PF, FO, A, TO, Blk, Stl, Pts, Avg.

#23 • YOELI CHILDS
6-8 • 225 • JR • FORWARD



SOUTH JORDAN, UTAH
BINGHAM HS

2018-19 SEASON — PPG: 21.2 RPG: 9.8 APG: 2.1 BPG: 1.0 SPG: 1.0 FG%: .514 3FG%: .321 FT%: .705

2018-19 • Junior

- Scored 31 points in three-straight games (Weber State, Utah State Utah), the first Cougar to score 30-plus in three-straight games since Jimmer Fredette in the final five games of the 2010-11 season
- Named the Dec. 10 WCC Player of the Week and NCAA.com March Madness Player of the Week
- Named the Jan. 14 WCC Player of the Week
- Named to the mid-season watch lists for the Lute Olson Player of the Year and the Lou Henson Mid-Major Player of the Year awards
- Named to the Preseason All-WCC Team
- A preseason candidate for the 2019 Karl Malone Power Forward of the Year Award
- Named to the Men Against Breast Cancer Cougar Cup All-Tournament Team

2017-18 • Sophomore

- Named to the All-WCC First Team
- Named to the USBWA All-District VIII Team
- Named to the NABC All-District 9 First Team
- Earned a spot on the WCC All-Tournament Team
- Named to the Barclays Center Classic All-Tournament Team
- Named the Jan. 15, 2018, WCC Player of the Week
- Received the Male Crowd Pleaser Award at the 2018 Y Awards
- Received the Most Outstanding Player Award at the end of season banquet
- Nationally was 20th in double-doubles, 41st in defensive rebounds per game, 59th in field-goal percentage, 61st in blocked shots per game
- Scored in double figures 33 times and had 20-plus points 14 times
- Had 15 double-doubles
- Led the team in scoring 14 times, rebounds 23 times, assists seven times

2016-17 • Freshman

- Named to the All-WCC Freshman Team
- Received Bronze Honors on the WCC Commissioner's Honor Roll
- Received the Most Improved Player Award at the end of season banquet
- Nationally was 53rd in defensive rebounds per game, 85th in total rebounds, 93rd in rebounds per game, 105th in total blocks
- Nationally among freshmen was 3rd in rebounds per game, 3rd in defensive rebounds per game, 15th in blocks per game
- In the WCC was 2nd in defensive rebounds, 3rd in rebounding, 5th in field goal percentage, 5th in blocked shots, 5th in double-doubles
- First all-time among BYU freshmen in rebounds and second in rebounds per game, blocks, blocks per game and field goal percentage.

Before BYU

- Played for Jake Schroeder at Bingham High School
- As a senior in 2015-16 averaged 18.5 points, 10.7 rebounds and 2.4 assists and led Bingham to a record of 24-2 overall and 12-0 in district play and the 5A state title
- Named the 5A MVP by the Deseret News and first-team all-state by the Salt Lake Tribune in 2016
- As a junior in 2014-15 averaged 16.4 points, 10.7 rebounds and 2.4 assists and led Bingham to a record of 20-4 overall
- Named 5A first-team all-state by the Deseret News and the Salt Lake Tribune in 2015

Personal

- Wife Megan plays volleyball at Utah Valley
- Mother is Kara Childs
- Has one brother

2018-19 SEASON HIGHS

PTS	31 (3x) last vs. Utah – 12/08/18
1st H	16 (2x) last vs. Santa Clara – 01/12/19
2nd H	20 vs. Portland – 01/10/19
REB	16 (2x) last at Illinois State – 11/28/18
AST	6 at Illinois State – 11/28/18
BLK	3 vs. Portland State – 12/12/18
STL	5 vs. Utah State – 12/05/18
FGM	13 (3x) last vs. Utah – 12/08/18
FGA	24 (2x) last at San Diego – 02/14/19
3PM	3 (3x) last at San Diego – 02/14/19
3PA	6 at San Diego – 02/14/19
FTM	8 (2x) last vs. Portland – 01/10/19
FTA	9 (2x) last at San Francisco – 01/19/19
MIN	44 vs. UNLV – 12/15/18

CAREER HIGHS

PTS	33 vs. Saint Mary's – 03/05/18
1st H	18 vs. Saint Mary's – 03/05/18
2nd H	20 (2x) last vs. Portland – 01/10/19
REB	17 at San Francisco – 02/11/17
AST	8 at Santa Clara – 01/13/18
BLK	5 (2x) last vs. LMU – 01/18/18
STL	5 vs. Utah State – 12/05/18
FGM	13 (4x) last vs. Utah – 12/08/18
FGA	24 vs. Saint Mary's – 01/24/19
3PM	3 (5x) last at San Diego – 02/14/19
3PA	6 at San Diego – 02/14/19
FTM	8 (3x) last vs. Portland – 01/10/19
FTA	13 vs. CSU Bakersfield – 12/22/16
MIN	45 vs. San Francisco – 02/10/18

MISCELLANEOUS

	18-19	Career
Double-Figure Points	26 (16-10)	72 (50-22)
20-plus Points	16 (10-6)	31 (22-9)
Double-Figure Reb	15 (11-4)	41 (31-10)
Double-Doubles	15 (11-4)	35 (26-9)
3-plus Steals	1 (1-0)	3 (3-0)
3-plus Blocks	1 (1-0)	16 (13-3)
3-plus 3-point FG	3 (2-1)	5 (3-2)
Scoring Leader	15 (9-6)	30 (20-10)
Rebound Leader	23 (15-8)	58 (40-18)
Assist Leader	5 (0-5)	13 (6-7)

CAREER STATISTICS (ALL GAMES)

Year	GP	GS	Min	Avg	FG	FGA	Pct	3FG	FGA	Pct	FT	FTA	Pct	Off	Def	TR	Avg	PF	FO	A	TO	Blk	Stl	Pts	Avg
2016-17	33	26	854	25.9	122	222	.550	0	2	.000	62	106	.585	62	210	272	8.2	80	3	41	57	46	19	306	9.3
2017-18	35	34	1191	34.0	246	455	.541	15	48	.313	117	182	.643	70	231	301	8.6	79	3	77	76	63	30	624	17.8
2018-19	27	27	903	33.4	221	430	.514	27	84	.321	103	146	.705	60	205	265	9.8	71	4	56	73	27	26	572	21.2
TOTAL	95	87	2948	31.0	589	1107	.532	42	134	.313	282	434	.650	192	646	838	8.8	230	10	174	206	136	75	1502	15.8

CAREER STATISTICS (CONFERENCE GAMES)

Year	GP	GS	Min	Avg	FG	FGA	Pct	3FG	FGA	Pct	FT	FTA	Pct	Off	Def	TR	Avg	PF	FO	A	TO	Blk	Stl	Pts	Avg
2016-17	17	16	452	26.6	68	130	.523	0	2	.000	34	57	.596	37	103	140	8.2	47	3	20	26	23	10	170	10.0
2017-18	18	17	613	34.1	126	224	.563	5	21	.238	65	97	.670	33	126	159	8.8	45	2	50	41	29	11	322	17.9
2018-19	12	12	411	34.2	87	188	.463	15	43	.349	49	73	.671	26	88	114	9.5	31	2	16	33	10	13	238	19.8
TOTAL	47	45	1476	31.4	281	542	.518	20	66	.303	148	227	.652	96	317	413	8.8	123	7	86	100	62	34	730	15.5

#25 • GAVIN BAXTER
6-9 • 210 • FR • FORWARD



PROVO, UTAH
TIMPVIEW HS

2018-19 SEASON — PPG: 4.1 RPG: 2.6 APG: 0.2 BPG: 0.8 SPG: 0.1 FG%: .616 3FG%: .333 FT%: .483

Before BYU

- Played for Kevin Santiago at Timpvie High School
- As a senior in 2015-16 averaged 15.7 points and 6.4 rebounds and led Timpvie to a 21-6, 11-1 record of and a trip to the 4A state title game
- Named 4A first-team all-state by the Salt Lake Tribune and Deseret News
- As a junior in 2014-15 averaged 15.5 points and led Timpvie to a record of 15-9, 8-4 and a trip to the 4A quarterfinals
- Named 4A second-team all-state by the Deseret News in 2015
- As a sophomore in 2013-14 averaged 11.4 points and 6.2 rebounds while helping Timpvie to a 19-6, 10-2 record and a trip to the 4A quarterfinals
- Named 4A third-team all-state by the Deseret News in 2014
- Named a four star recruit by ESPN, Scout and Rivals
- Ranked No. 21 nationally among small forwards by ESPN
- Named the No. 5 recruit in Utah by ESPN
- Also recruited by Arizona State, California, Oregon, Oregon State, UCLA and Utah State
- Played for the Utah Prospects AAU team coached by Tim Davis

- Father Kurt Baxter played basketball for BYU
- Sister Lauren Baxter ran track at BYU

Personal

- Parents are Kurt and Angela Baxter
- Has four siblings
- Served a mission for The Church of Jesus Christ of Latter-day Saints in Washington, D.C.
- Mother Angela Baxter ran track for BYU and was an All-American sprinter

2018-19 SEASON HIGHS

PTS	25 vs. Loyola Marymount – 02/02/19
1st H	8 vs. Loyola Marymount – 02/02/19
2nd H	17 vs. Loyola Marymount – 02/02/19
REB	10 vs. Loyola Marymount – 02/02/19
AST	3 vs. Pacific – 02/09/19
BLK	4 vs. Northwestern State – 11/13/18
STL	1 (3x) last vs. Loyola Marymount – 02/02/19
FGM	10 vs. Loyola Marymount – 02/02/19
FGA	14 vs. Loyola Marymount – 02/02/19
3PM	2 vs. Loyola Marymount – 02/02/19
3PA	3 vs. Loyola Marymount – 02/02/19
FTM	3 (2x) last vs. Loyola Marymount – 02/02/19
FTA	4 vs. Loyola Marymount – 02/02/19
MIN	32 vs. Loyola Marymount – 02/02/19

MISCELLANEOUS

	18-19	Career
Double-Figure Points	3 (3-0)	3 (3-0)
20-plus Points	1 (1-0)	1 (1-0)
Double-Figure Reb	1 (1-0)	1 (1-0)
Double-Doubles	1 (1-0)	1 (1-0)
3-plus Steals	–	–
3-plus Blocks	2 (2-0)	2 (2-0)
3-plus 3-point FG	–	–
Scoring Leader	1 (1-0)	1 (1-0)
Rebound Leader	1 (1-0)	1 (1-0)
Assist Leader	–	–

2018-19 GAME-BY-GAME

Opponent	Date	GS	Min	FG	FGA	Pct	3FG	FGA	Pct	FT	FTA	Pct	Off	Def	TR	Avg	PF	FO	A	TO	Blk	Stl	Pts	Avg
at Nevada	11/06/18		15	2	2	1.000	0	0	.000	0	1	.000	2	2	4	4.0	4	0	1	0	1	0	4	4.0
Utah Valley	11/09/18		11	1	1	1.000	0	0	.000	0	0	.000	2	4	6	5.0	1	0	0	0	1	0	2	3.0
Northwestern State	11/13/18		16	1	4	.250	0	0	.000	2	3	.667	0	1	1	3.7	2	0	0	0	4	0	4	3.3
Oral Roberts	11/15/18		14	1	2	.500	0	0	.000	2	2	1.000	2	1	3	3.5	3	0	0	0	0	0	4	3.5
Alabama A&M	11/17/18												DNP											
Rice	11/21/18		12	1	3	.333	0	1	.000	0	0	.000	0	2	2	3.2	1	0	1	0	0	0	2	3.2
Houston	11/24/18		5	0	1	.000	0	0	.000	0	0	.000	0	0	0	2.7	0	0	0	1	0	0	0	2.7
at Illinois State	11/28/18		10	4	4	1.000	0	0	.000	0	3	.000	0	2	2	2.6	1	0	0	0	1	0	8	3.4
at Weber State	12/01/18		5	0	0	.000	0	0	.000	0	0	.000	0	0	0	2.3	3	0	0	1	0	0	0	3.0
Utah State	12/05/18		3	0	0	.000	0	0	.000	0	0	.000	0	0	0	2.0	1	0	0	0	0	0	0	2.7
vs. Utah	12/08/18		3	0	2	.000	0	1	.000	0	0	.000	0	0	0	1.8	0	0	0	0	0	0	0	2.4
Portland State	12/12/18		2	0	0	.000	0	0	.000	0	0	.000	0	0	0	1.6	0	0	0	0	0	0	0	2.2
vs. UNLV	12/15/18		2	0	0	.000	0	0	.000	0	3	.000	1	1	2	1.7	0	0	0	0	0	0	0	2.0
at San Diego State	12/22/18		3	0	0	.000	0	0	.000	0	0	.000	0	1	1	1.6	0	0	0	0	0	0	0	1.8
at Mississippi State	12/29/18		16	1	2	.500	0	0	.000	0	1	.000	0	1	1	1.6	3	0	0	2	1	0	2	1.9
at Pacific	01/03/19		1	0	0	.000	0	0	.000	0	0	.000	0	0	0	1.5	0	0	0	0	0	0	0	1.7
at Saint Mary's	01/05/19		4	2	2	1.000	0	0	.000	0	0	.000	0	0	0	1.4	0	0	0	0	0	0	4	1.9
Portland	01/10/19		10	1	3	.333	0	0	.000	1	2	.500	1	0	1	1.4	2	0	0	1	0	1	3	1.9
Santa Clara	01/12/19		4	2	4	.500	0	0	.000	1	3	.333	3	1	4	1.5	2	0	0	0	1	0	5	2.1
at Pepperdine	01/17/19		23	5	5	1.000	0	0	.000	3	3	1.000	0	6	6	1.7	3	0	0	0	3	0	13	2.7
at San Francisco	01/19/19		16	1	3	.333	0	0	.000	0	0	.000	2	2	4	1.9	0	0	0	2	2	0	2	2.7
Saint Mary's	01/24/19		27	5	6	.833	0	1	.000	0	0	.000	3	2	5	2.0	4	0	0	0	2	1	10	3.0
Gonzaga	01/31/19		25	2	4	.500	0	0	.000	0	0	.000	1	3	4	2.1	1	0	1	0	1	0	4	3.0
Loyola Marymount	02/02/19	*	32	10	14	.714	2	3	.667	3	4	.750	4	6	10	2.4	3	0	0	1	2	1	25	4.0
at Portland	02/07/19	*	21	2	3	.667	0	0	.000	1	2	.500	1	6	7	2.6	2	0	0	1	1	0	5	4.0
Pacific	02/09/19	*	26	4	6	.667	0	0	.000	1	2	.500	2	1	3	2.6	2	0	3	1	2	0	9	4.2
at San Diego	2/14/19	*	20	0	2	.000	0	0	.000	0	0	.000	0	1	1	2.6	5	1	0	0	0	0	0	4.1
at Loyola Marymount	02/16/19																							
San Francisco	02/21/19																							
at Gonzaga	02/23/19																							
San Diego	03/02/19																							
Totals			4	326	45	.73	2	6	.333	14	29	.483	24	43	67	2.6	43	1	6	10	22	3	106	4.1

CAREER STATISTICS (ALL GAMES)

Year	GP	GS	Min	Avg	FG	FGA	Pct	3FG	FGA	Pct	FT	FTA	Pct	Off	Def	TR	Avg	PF	FO	A	TO	Blk	Stl	Pts	Avg
2018-19	26	4	326	12.5	45	73	.616	2	6	.333	14	29	.483	24	43	67	2.6	43	1	6	10	22	3	106	4.1
TOTAL	26	4	326	12.5	45	73	.616	2	6	.333	14	29	.483	24	43	67	2.6	43	1	6	10	22	3	106	4.1

CAREER STATISTICS (CONFERENCE GAMES)

Year	GP	GS	Min	Avg	FG	FGA	Pct	3FG	FGA	Pct	FT	FTA	Pct	Off	Def	TR	Avg	PF	FO	A	TO	Blk	Stl	Pts	Avg
2018-19	12	4	209	17.4	34	52	.654	2	4	.500	10	16	.625	17	28	45	3.8	24	1	4	6	14	3	80	6.7
TOTAL	12	4	209	17.4	34	52	.654	2	4	.500	10	16	.625	17	28	45	3.8	24	1	4	6	14	3	80	6.7

#33 • DALTON NIXON
6-7 • 215 • SO • FORWARD



OREM, UTAH
OREM HS

2018-19 SEASON HIGHS

Table with 2 columns: Stat and Opponent/Date. Rows include PTS, 1st H, 2nd H, REB, AST, BLK, STL, FGM, 3PM, 3PA, FTM, FTA, MIN.

CAREER HIGHS

Table with 2 columns: Stat and Opponent/Date. Rows include PTS, 1st H, 2nd H, REB, AST, BLK, STL, FGM, 3PM, 3PA, FTM, FTA, MIN.

MISCELLANEOUS

Table with 3 columns: Stat, 18-19, Career. Rows include Double-Figure Points, 20-plus Points, Double-Figure Reb, Double-Doubles, 3-plus Steals, 3-plus Blocks, 3-plus 3-point FG, Scoring Leader, Rebound Leader, Assist Leader.

CAREER STATISTICS (ALL GAMES)

Large table with 26 columns: Year, GP, GS, Min, Avg, FG, FGA, Pct, 3FG, FGA, Pct, FT, FTA, Pct, Off, Def, TR, Avg, PF, FO, A, TO, Blk, Stl, Pts, Avg. Includes totals for 2014-15, 2017-18, 2018-19, and overall.

CAREER STATISTICS (CONFERENCE GAMES)

Table with 26 columns: Year, GP, GS, Min, Avg, FG, FGA, Pct, 3FG, FGA, Pct, FT, FTA, Pct, Off, Def, TR, Avg, PF, FO, A, TO, Blk, Stl, Pts, Avg. Includes totals for 2014-15, 2017-18, 2018-19, and overall.

2018-19 SEASON — PPG: 3.6 RPG: 2.9 APG: 0.9 BPG: 0.2 SPG: 0.5 FG%: .439 3FG%: .063 FT%: .724

2017-18 • Freshman

- Played in 23 games, missed 12 due to injury
Received the Best Conditioned Post Player Award at the end of season banquet
Posted season highs of 15 points (UT Arlington), 8 rebounds (UT Arlington), 4 assists (Saint Mary's), 1 block (5 times), 2 steals (twice) and 2 3-point field goals (at Portland)

2014-15 • Freshman

- Played in 27 games and started 2
Posted season highs of 10 points (Southern Virginia), 4 rebounds (4 times), 4 assists (San Francisco), 2 blocks (Santa Clara) and 1 steal (4 times)

Before BYU

- A four-year letterman playing for Golden Holt at Orem High School

- Orem's all-time leading scorer with 1,367 points and a three-time first-team all-state honoree
As a senior averaged 20.2 points, 8.9 rebounds, 1.7 assists and 1.1 steals as Orem finished 18-9 overall, 10-2 in region play and advanced to the 4A state championship game

Personal

- Parents are Kevin and Stephanie Nixon
Has two sisters
His father Kevin Nixon played at BYU from 1991-93

2018-19 GAME-BY-GAME

Large table with 26 columns: Opponent, Date, GS, Min, FG, FGA, Pct, 3FG, FGA, Pct, FT, FTA, Pct, Off, Def, TR, Avg, PF, FO, A, TO, Blk, Stl, Pts, Avg. Lists games against Nevada, Utah Valley, Northwestern State, Oral Roberts, Alabama A&M, Rice, Houston, at Illinois State, at Weber State, Utah State, vs. Utah, Portland State, vs. UNLV, at San Diego State, at Mississippi State, at Pacific, at Saint Mary's, Portland, Santa Clara, at Pepperdine, at San Francisco, Saint Mary's, Gonzaga, Loyola Marymount, at Portland, Pacific, at San Diego, at Loyola Marymount, San Francisco, at Gonzaga, San Diego, and Totals.

#40 • KOLBY LEE
6-9 • 240 • FR • FORWARD



**MERIDIAN, IDAHO
ROCKY MOUNTAIN HS**

2018-19 SEASON — PPG: 1.3 RPG: 0.9 APG: 0.1 BPG: 0.0 SPG: 0.0 .400 .389 3FG%: .250 FT%: .300

Before BYU

- Played for Dane Roy at Rocky Mountain High School
- As a senior led Rocky Mountain High School to a record of 26-1 and the school's first state title
- Averaged 16.6 points, 9.3 rebounds and 2.6 blocks per game
- Named the 2017 Idaho Gatorade Player of the Year
- Named the 5A Pct of the Year by the Idaho Statesman
- As a junior led Rocky Mountain High School to a record of 19-7 and the consolation title in the 5A state tournament
- Averaged 14.8 points, 8.9 rebounds and 1.0 block as a junior
- Named to the 5A All-Idaho Second Team by the Idaho Statesman
- As a sophomore led Rocky Mountain to a 21-6 record, a district title and the consolation title in the 5A state tournament
- Averaged 13.7 points and 7.0 rebounds as a sophomore
- As a freshman helped Rocky Mountain to an 18-8 record and a trip to semifinals of 5A state tournament
- Competed in the 2016 NBPA Top 100 High School Camp at University of Virginia
- Named a four star recruit by ESPN.com
- Named the No. 1 recruit in the state of Idaho for the class of 2017
- Played AAU for Hoop Dreams Idaho and Team Fast
- Also recruited by Iowa, Oregon State, Washington State, Purdue, Utah State, Boise State, Richmond, Portland, Kent State, Depaul, UC Davis

Personal

- Parents are Brian and Jill Lee
- Has one older sister

2018-19 SEASON HIGHS

PTS	5 (2x) last at San Diego State – 12/22/18
1st H	3 at San Diego State – 12/22/18
2nd H	5 vs. Rice – 11/21/18
REB	2 (3x) last at San Diego State – 12/22/18
AST	1 vs. Oral Roberts – 11/15/18
BLK	–
STL	–
FGM	2 (2x) last at San Diego State – 12/22/18
FGA	3 (3x) last vs. Rice – 11/21/18
3PM	1 at San Diego State – 12/22/18
3PA	1 (4x) last at San Diego State – 12/22/18
FTM	1 (3x) last vs. Portland State – 12/12/18
FTA	2 (5x) last at Portland – 02/07/19
MIN	7 vs. Oral Roberts – 11/15/18

MISCELLANEOUS

	18-19	Career
Double-Figure Points	–	–
20-plus Points	–	–
Double-Figure Reb	–	–
Double-Doubles	–	–
3-plus Steals	–	–
3-plus Blocks	–	–
3-plus 3-point FG	–	–
Scoring Leader	–	–
Rebound Leader	–	–
Assist Leader	–	–

2018-19 GAME-BY-GAME

Opponent	Date	GS	Min	FG	FGA	Pct	3FG	FGA	Pct	FT	FTA	Pct	Off	Def	TR	Avg	PF	FO	A	TO	Blk	Stl	Pts	Avg
at Nevada	11/06/18		4	1	1	1.000	0	0	.000	0	0	.000	1	1	2	2.0	0	0	0	0	0	0	2	2.0
Utah Valley	11/09/18		1	0	2	.000	0	1	.000	0	0	.000	0	0	0	1.0	0	0	0	0	0	0	0	1.0
Northwestern State	11/13/18		5	1	3	.333	0	0	.000	1	2	.500	1	0	1	1.0	1	0	0	0	0	0	3	1.7
Oral Roberts	11/15/18		7	0	1	.000	0	1	.000	0	0	.000	0	2	2	1.3	2	0	1	1	0	0	0	1.3
Alabama A&M	11/17/18		6	0	3	.000	0	1	.000	0	0	.000	0	1	1	1.2	2	0	0	0	0	0	0	1.0
Rice	11/21/18		3	2	3	.667	0	0	.000	1	2	.500	1	0	1	1.2	1	0	0	0	0	0	5	1.7
Houston	11/24/18																							
at Nevada	11/28/18																							
at Weber State	12/01/18																							
Utah State	12/05/18																							
vs. Utah	12/08/18		1	0	0	.000	0	0	.000	0	0	.000	0	1	1	1.1	0	0	0	0	0	0	0	1.4
Portland State	12/12/18		3	0	1	.000	0	0	.000	1	2	.500	0	0	0	1.0	1	0	0	0	0	0	1	1.4
vs. UNLV	12/15/18																							
at San Diego State	12/22/18		5	2	2	1.000	1	1	1.000	0	0	.000	0	2	2	1.1	2	0	0	0	0	0	5	1.8
at Mississippi State	12/29/18																							
at Pacific	01/03/19		0	0	0	.000	0	0	.000	0	0	.000	0	1	1	1.1	0	0	0	0	0	0	0	1.6
at Saint Mary's	01/05/19		2	0	0	.000	0	0	.000	0	2	.000	0	1	1	1.1	0	0	0	0	0	0	0	1.5
Portland	01/10/19		3	0	1	.000	0	0	.000	0	0	.000	0	0	0	1.0	1	0	0	0	0	0	0	1.3
Santa Clara	01/10/19																							
at Pepperdine	01/17/19																							
at San Francisco	01/19/19																							
Saint Mary's	01/24/19																							
Gonzaga	01/31/19		1	1	1	1.000	0	0	.000	0	0	.000	0	0	0	0.9	0	0	0	0	0	0	2	1.4
Loyola Marymount	02/02/19		0+	0	0	.000	0	0	.000	0	0	.000	0	0	0	0.9	0	0	0	0	0	0	0	1.3
at Portland	02/07/19		3	1	2	.500	0	0	.000	0	2	.000	1	0	1	0.9	0	0	0	0	0	0	2	1.3
Pacific	02/09/19																							
at San Diego	02/14/19																							
at Loyola Marymount	02/16/19																							
San Francisco	02/21/19																							
at Gonzaga	02/23/19																							
San Diego	03/02/19																							
Totals			0	44	8	.400	1	4	.250	3	10	.300	4	9	13	0.9	10	0	1	1	0	0	20	1.3

CAREER STATISTICS (ALL GAMES)

Year	GP	GS	Min	Avg	FG	FGA	Pct	3FG	FGA	Pct	FT	FTA	Pct	Off	Def	TR	Avg	PF	FO	A	TO	Blk	Stl	Pts	Avg
2018-19	15	0	44	2.9	8	20	.400	1	4	.250	3	10	.300	4	9	13	0.9	10	0	1	1	0	0	20	1.3
TOTAL	15	0	44	2.9	8	20	.400	1	4	.250	3	10	.300	4	9	13	0.9	10	0	1	1	0	0	20	1.3

CAREER STATISTICS (CONFERENCE GAMES)

Year	GP	GS	Min	Avg	FG	FGA	Pct	3FG	FGA	Pct	FT	FTA	Pct	Off	Def	TR	Avg	PF	FO	A	TO	Blk	Stl	Pts	Avg
2018-19	6	0	9	1.5	2	4	.500	0	0	.000	0	4	.000	1	2	3	0.5	1	0	0	0	0	0	4	0.7
TOTAL	6	0	9	1.5	2	4	.500	0	0	.000	0	4	.000	1	2	3	0.5	1	0	0	0	0	0	4	0.7

#44 • CONNOR HARDING
6-6 • 185 • FR • GUARD



POCATELLO, IDAHO
HIGHLAND HS

2018-19 SEASON — PPG: 6.5 RPG: 3.0 APG: 1.3 BPG: 0.2 SPG: 0.4 FG%: .484 3FG%: .344 FT%: .653

Before BYU

- Played for Chris Frost at Highland High School
- As a senior in 2015-16 averaged 18.5 points, 6.3 rebounds and 2.3 assists
- Led Highland to a 19-6 record and the 5A state title
- Named the USA Today Idaho Player of the Year, Idaho Gatorade Player of the Year and 5A Idaho Statesman Player of the Year
- As a junior in 2014-15 averaged 16.6 points, 8.5 rebounds and 3.7 assists
- Named to the American Family Insurance ALL-USA Idaho Boys Basketball First Team
- A second-team all-state performer as a sophomore
- Named a four star recruit by ESPN and a three star recruit by Scout and Rivals
- Ranked No. 27 nationally among shooting guards by ESPN
- Named the top recruit in Idaho by ESPN
- Also recruited by Arizona State, California, Davidson, Harvard, Idaho State, Oregon State, Stanford, Utah and Utah State
- Played for the Utah Prospects AAU team coached by Tim Davis

Personal

- Parents are Robert and Robyn and stepmother is Alison
- Has six siblings
- Served a mission for The Church of Jesus Christ of Latter-day Saints in Atlanta

2018-19 SEASON HIGHS

PTS	14 vs. Utah State – 12/05/18
1st H	10 (2x) last vs. Utah State – 12/05/18
2nd H	8 (2x) last at Weber State – 12/03/18
REB	7 (2x) last vs. Rice – 11/21/18
AST	4 vs. Santa Clara – 01/12/19
BLK	2 (2x) last vs. Portland – 01/10/19
STL	2 vs. Oral Roberts – 11/15/18
FGM	5 (2x) last vs. Portland State – 12/12/18
FGA	9 vs. Portland State – 12/12/18
3PM	3 vs. Pacific – 02/09/19
3PA	6 vs. Rice – 11/21/18
FTM	4 vs. Santa Clara – 01/12/19
FTA	5 (2x) last vs. Pacific – 02/09/19
MIN	30 at Saint Mary's – 01/5/19

MISCELLANEOUS

	18-19	Career
Double-Figure Points	4 (4-0)	4 (4-0)
20-plus Points	--	--
Double-Figure Reb	--	--
Double-Doubles	--	--
3-plus Steals	--	--
3-plus Blocks	--	--
3-plus 3-point FG	1 (1-0)	1 (1-0)
Scoring Leader	--	--
Rebound Leader	1 (1-0)	1 (1-0)
Assist Leader	1 (0-1)	1 (0-1)

2018-19 GAME-BY-GAME

Opponent	Date	GS	Min	FG	FGA	Pct	3FG	FGA	Pct	FT	FTA	Pct	Off	Def	TR	Avg	PF	FO	A	TO	Blk	Stl	Pts	Avg	
at Nevada	11/06/18		19	1	5	.200	0	4	.000	3	5	.600	0	3	3	3.0	1	0	1	0	2	0	5	5.0	
Utah Valley	11/09/18		15	2	3	.667	1	1	1.000	1	2	.500	0	2	2	2.5	2	0	2	0	0	1	6	5.5	
Northwestern State	11/13/18		19	4	7	.571	1	2	.500	2	3	.667	0	4	4	3.0	2	0	1	3	0	1	11	7.3	
Oral Roberts	11/15/18		22	4	8	.500	1	3	.333	1	2	.500	2	5	7	4.0	1	0	1	0	0	2	10	8.0	
Alabama A&M	11/17/18		18	3	7	.429	1	4	.250	2	3	.667	0	6	6	4.4	1	0	2	0	0	0	9	8.2	
Rice	11/21/18		16	3	8	.375	1	6	.167	2	3	.667	1	6	7	4.8	1	0	2	0	1	0	9	8.3	
Houston	11/24/18		18	0	2	.000	0	2	.000	1	2	.500	0	1	1	4.3	1	0	0	1	0	0	1	7.3	
at Illinois State	11/28/18		29	1	4	.250	0	3	.000	3	3	1.000	1	3	4	4.3	2	0	0	2	0	0	5	7.0	
at Weber State	12/01/18		17	3	3	1.000	0	0	.000	2	2	1.000	1	4	5	4.3	5	1	1	0	0	0	8	7.1	
Utah State	12/05/18		21	5	6	.833	2	3	.667	2	3	.667	0	1	1	4.0	1	0	1	1	0	0	14	7.8	
vs. Utah	12/08/18	*	24	2	5	.400	1	2	.500	0	0	.000	0	5	5	4.1	4	0	1	1	0	0	5	7.5	
Portland State	12/12/18	*	24	5	9	.556	0	2	.000	1	2	.500	1	2	3	4.0	1	0	3	1	0	1	11	7.8	
vs. UNLV	12/15/18	*	25	2	5	.400	1	2	.500	0	0	.000	0	0	0	3.7	2	0	1	2	0	1	5	7.6	
at San Diego State	12/22/18	*	26	3	3	1.000	2	2	1.000	0	0	.000	0	4	4	3.7	3	0	2	2	0	0	8	7.6	
at Mississippi State	12/29/18	*	18	2	5	.400	1	3	.333	2	3	.667	0	4	4	3.7	0	0	2	1	0	0	7	7.6	
at Pacific	01/03/19	*	24	3	5	.600	1	3	.333	0	1	.000	0	3	3	3.7	4	0	2	2	0	1	7	7.6	
at Saint Mary's	01/05/19	*	30	2	4	.500	1	1	1.000	0	0	.000	0	4	4	3.7	1	0	2	1	1	0	5	7.4	
Portland	01/10/19	*	22	2	5	.400	2	3	.667	2	2	1.000	0	2	2	3.6	1	0	1	1	2	0	8	7.4	
Santa Clara	01/12/19	*	25	1	2	.500	1	2	.500	4	4	1.000	1	3	4	3.6	2	0	4	0	0	0	7	7.4	
at Pepperdine	01/17/19	*	13	0	2	.000	0	1	.000	0	0	.000	0	0	0	3.5	2	0	1	1	0	0	0	7.1	
at San Francisco	01/19/19	*	15	2	4	.500	0	1	.000	1	1	1.000	0	0	0	3.3	2	0	1	0	0	1	5	7.0	
Saint Mary's	01/24/19	*	25	1	3	.333	0	1	.000	0	0	.000	0	2	2	3.2	1	0	3	1	0	1	2	6.7	
Gonzaga	01/31/19	*	21	2	6	.333	0	1	.000	1	2	.500	0	2	2	3.2	0	0	0	1	0	1	5	6.7	
Loyola Marymount	02/02/19	*	9	1	4	.250	0	1	.000	0	1	.000	0	1	1	3.1	0	0	0	1	0	0	2	6.5	
at Portland	02/07/19		13	2	3	.667	1	2	.500	0	0	.000	0	3	3	3.1	1	0	1	0	0	0	5	6.4	
Pacific	02/09/19		26	4	6	.667	3	5	.600	2	5	.400	1	3	4	3.1	1	0	0	0	0	0	13	6.7	
at San Diego	2/14/19		18	1	2	.500	0	1	.000	0	0	.000	0	1	1	3.0	1	0	1	1	0	1	2	6.5	
at Loyola Marymount	02/16/19																								
San Francisco	02/21/19																								
at Gonzaga	02/23/19																								
San Diego	03/02/19																								
Totals			14	552	61	126	.484	21	61	.344	32	49	.653	8	74	82	3.0	43	1	36	23	6	11	175	6.5

CAREER STATISTICS (ALL GAMES)

Year	GP	GS	Min	Avg	FG	FGA	Pct	3FG	FGA	Pct	FT	FTA	Pct	Off	Def	TR	Avg	PF	FO	A	TO	Blk	Stl	Pts	Avg
2018-19	27	14	552	20.4	61	126	.484	21	61	.344	32	49	.653	8	74	82	3.0	43	1	36	23	6	11	175	6.5
TOTAL	27	14	552	20.4	61	126	.484	21	61	.344	32	49	.653	8	74	82	3.0	43	1	36	23	6	11	175	6.5

CAREER STATISTICS (CONFERENCE GAMES)

Year	GP	GS	Min	Avg	FG	FGA	Pct	3FG	FGA	Pct	FT	FTA	Pct	Off	Def	TR	Avg	PF	FO	A	TO	Blk	Stl	Pts	Avg
2018-19	12	9	241	20.1	21	46	.457	9	22	.409	10	16	.625	2	24	26	2.2	16	0	16	9	3	5	61	5.1
TOTAL	12	9	241	20.1	21	46	.457	9	22	.409	10	16	.625	2	24	26	2.2	16	0	16	9	3	5	61	5.1

Official Basketball Box Score -- Game Totals -- Final Statistics
BYU vs UNLV
12-15-18 5:30 PM at T-Mobile Arena (Las Vegas, Nev.)

BYU 90 • 8-5

Table with columns for Player, FG-FGA, 3-Ptr, FT-FTA, Rebounds, PF, TP, A TO Blk Stl, Min. Rows include HARDNETT, Jahshire, SELJAAS, Zac, CHILDS, Yoeli, HAWS, TJ, HARDING, Connor, BERGERSEN, Rylan, EMERY, Nick, CANNON, McKay, BAXTER, Gavin, NIXON, Dalton, WORTHINGTON, Luke, Team.

FG % 1st Half: 14-31 45.2% 2nd half: 19-31 61.3% OT: 3-6 50.0% Game: 36-68 52.9% Deadball Rebounds 1
3FG % 1st Half: 1-4 25.0% 2nd half: 4-11 36.4% OT: 0-1 0.0% Game: 5-16 31.3%
FT % 1st Half: 1-5 20.0% 2nd half: 11-13 84.6% OT: 1-2 50.0% Game: 13-20 65.0%

UNLV 92 • 5-4

Table with columns for Player, FG-FGA, 3-Ptr, FT-FTA, Rebounds, PF, TP, A TO Blk Stl, Min. Rows include Clyburn, Kris, Robotham, Noah, Ntambwe, Joel, Tchamwa Tchatchoua, J, Mbakke Diong, Cheikh, Coupe Jr, Ben, Hardy, Amauri, Hamilton, Bryce, Dembele, Cheickna, Woodbury, Trey, Team.

FG % 1st Half: 15-31 48.4% 2nd half: 9-24 37.5% OT: 2-4 50.0% Game: 26-59 44.1% Deadball Rebounds 1
3FG % 1st Half: 9-16 56.3% 2nd half: 3-10 30.0% OT: 1-1 100.0% Game: 13-27 48.1%
FT % 1st Half: 8-11 72.7% 2nd half: 15-17 88.2% OT: 4-4 100.0% Game: 27-32 84.4%

Officials: Verne Harris, Mike Reed, Winston Smith
Technical fouls: BYU-None. UNLV-None.
Attendance: 5107

Score by periods table with columns: 1st, 2nd, OT, Total. Rows: BYU, UNLV.

Points table with columns: In, Off, 2nd, Fast, Bench. Rows: BYU, UNLV.

Last FG - BYU OT-00:18, UNLV OT-00:00.
Largest lead - BYU by 4 1st-14:52, UNLV by 17 1st-02:30.
BYU led for 10:39. UNLV led for 28:28. Game was tied for 05:53.

Official Basketball Box Score -- Game Totals -- Final Statistics
BRIGHAM YOUNG vs SAN DIEGO STATE
12-22-18 4:10 pm PT at Steve Fisher Court at Viejas Arena

BRIGHAM YOUNG 81 • 8-6

Table with columns for Player, FG-FGA, 3-Ptr, FT-FTA, Rebounds, PF, TP, A TO Blk Stl, Min. Rows include CHILDS, Yoeli, HARDNETT, Jahshire, SELJAAS, Zac, HAWS, TJ, HARDING, Connor, BERGERSEN, Rylan, EMERY, Nick, MAUGHAN, Taylor, CANNON, McKay, BAXTER, Gavin, NIXON, Dalton, LEE, Kolby, WORTHINGTON, Luke, Team.

FG % 1st Half: 14-25 56.0% 2nd half: 17-33 51.5% Game: 31-58 53.4% Deadball Rebounds 1
3FG % 1st Half: 5-12 41.7% 2nd half: 3-9 33.3% Game: 8-21 38.1%
FT % 1st Half: 5-6 83.3% 2nd half: 6-7 85.7% Game: 11-13 84.6%

SAN DIEGO STATE 90 • 7-4

Table with columns for Player, FG-FGA, 3-Ptr, FT-FTA, Rebounds, PF, TP, A TO Blk Stl, Min. Rows include MCDANIELS, Jalen, MITCHELL, Matt, WATSON, Devin, SCHAKEL, Jordan, HEMSLEY, Jeremy, SEIKO, Adam, NARANIN, Nolan, MENSAH, Nathan, Team.

FG % 1st Half: 18-35 51.4% 2nd half: 10-18 55.6% Game: 28-53 52.8% Deadball Rebounds 5
3FG % 1st Half: 9-17 52.9% 2nd half: 3-9 33.3% Game: 12-26 46.2%
FT % 1st Half: 7-11 63.6% 2nd half: 15-21 71.4% Game: 22-32 68.8%

Officials: David Hall, Deldre Carr, Steve Olson
Technical fouls: BRIGHAM YOUNG-None. SAN DIEGO STATE-None.
Attendance: 11321

Score by periods table with columns: 1st, 2nd, Total. Rows: BRIGHAM YOUNG, SAN DIEGO STATE.

Points table with columns: In, Off, 2nd, Fast, Bench. Rows: BYU, SDSU.

Last FG - BYU 2nd-00:33, SDSU 2nd-04:13.
Largest lead - BYU by 2 1st-18:02, SDSU by 20 1st-11:17.
BYU led for 00:21. SDSU led for 38:24. Game was tied for 01:15.

Official Basketball Box Score -- Game Totals -- Final Statistics
BYU vs Mississippi State
12/29/18 11:01 AM at Starkville, Miss. (Humphrey Coliseum)

BYU 81 • 8-7

Table with columns for Player, FG-FGA, 3-Ptr, FT-FTA, Rebounds, PF, TP, A TO Blk Stl, Min. Rows include CHILDS, Yoeli, HARDNETT, Jahshire, SELJAAS, Zac, HAWS, TJ, HARDING, Connor, BERGERSEN, Rylan, EMERY, Nick, CANNON, McKay, BAXTER, Gavin, WORTHINGTON, Luke, Team.

FG % 1st Half: 14-29 48.3% 2nd half: 12-31 38.7% Game: 26-60 43.3% Deadball Rebounds 2
3FG % 1st Half: 2-8 25.0% 2nd half: 3-12 25.0% Game: 5-20 25.0%
FT % 1st Half: 8-9 88.9% 2nd half: 16-20 80.0% Game: 24-29 82.8%

Mississippi State 103 • 12-1

Table with columns for Player, FG-FGA, 3-Ptr, FT-FTA, Rebounds, PF, TP, A TO Blk Stl, Min. Rows include Abdul Ado, Aric Holman, Nick Weatherspoon, Lamar Peters, Q Weatherspoon, Reggie Perry, T.J. Gray, Mitchell Storm, Tate Clayton, Robert Woodard II, KeyShawn Feazell, Tyson Carter, E.J. Datcher, Team.

FG % 1st Half: 19-38 50.0% 2nd half: 19-32 59.4% Game: 38-70 54.3% Deadball Rebounds 0
3FG % 1st Half: 3-13 23.1% 2nd half: 4-8 50.0% Game: 7-21 33.3%
FT % 1st Half: 7-7 100.0% 2nd half: 13-15 86.7% Game: 20-22 90.9%

Officials: Anthony Jordan, Olandis Poole, Rob Rourke
Technical fouls: BYU-EMERY, Nick; HARDNETT, Jahshire; TEAM. Mississippi State-Lamar Peters.
Attendance: 10202

Score by periods table with columns: 1st, 2nd, Total. Rows: BYU, Mississippi State.

Points table with columns: In, Off, 2nd, Fast, Bench. Rows: BYU, MS.

Last FG - BYU 2nd-00:45, MS 2nd-01:43.
Largest lead - BYU by 4 1st-17:04, MS by 36 2nd-03:31.
BYU led for 04:35. MS led for 32:20. Game was tied for 03:05.

Official Basketball Box Score -- Game Totals -- Final Statistics
Brigham Young vs Pacific
01/03/19 8:00 PM at Stockton, CA

Brigham Young 90 • 9-7, 1-0 WCC

Table with columns for Player, FG-FGA, 3-Ptr, FT-FTA, Rebounds, PF, TP, A TO Blk Stl, Min. Rows include CHILDS, Yoeli, WORTHINGTON, Luke, CANNON, McKay, HAWS, TJ, HARDING, Connor, HARDNETT, Jahshire, BERGERSEN, Rylan, SELJAAS, Zac, EMERY, Nick, BAXTER, Gavin, NIXON, Dalton, LEE, Kolby, Team.

FG % 1st Half: 18-30 60.0% 2nd half: 10-24 41.7% Game: 28-54 51.9% Deadball Rebounds 5
3FG % 1st Half: 9-17 52.9% 2nd half: 2-8 25.0% Game: 11-25 44.0%
FT % 1st Half: 4-8 50.0% 2nd half: 19-28 67.9% Game: 23-36 63.9%

Pacific 87 • 10-6, 0-1 WCC

Table with columns for Player, FG-FGA, 3-Ptr, FT-FTA, Rebounds, PF, TP, A TO Blk Stl, Min. Rows include Tripp, Jahliil, Townes, Anthony, Dorsey, Lafayette, McGhee, Brandon, Sanni, Ajare, Gallinat, Roberto, Bailey, Jeremiah, Price Noel, Jahbril, Small, Kendall, Cameron, Zach, Team.

FG % 1st Half: 11-28 39.3% 2nd half: 14-26 53.8% Game: 25-54 46.3% Deadball Rebounds 2
3FG % 1st Half: 1-6 16.7% 2nd half: 5-8 62.5% Game: 6-14 42.9%
FT % 1st Half: 14-17 82.4% 2nd half: 17-21 81.0% Game: 31-38 81.6%

Officials: Gregory Nixon, Shawn Lehigh, Scott Brown
Technical fouls: Brigham Young-None. Pacific-None.
Attendance: 2490

Score by periods table with columns: 1st, 2nd, Total. Rows: Pacific, Brigham Young.

Points table with columns: In, Off, 2nd, Fast, Bench. Rows: BYU, PAC.

Last FG - BYU 2nd-01:30, PAC 2nd-01:08.
Largest lead - BYU by 21 1st-03:36, PAC by 1 2nd-03:12.
BYU led for 36:33. PAC led for 00:20. Game was tied for 03:07.

Official Basketball Box Score -- Game Totals -- Final Statistics

BYU vs Portland

02/07/19 8:00 pm at Portland, Oregon, Chiles Center

BYU 83 • 15-10, 7-3

Box score table for BYU vs Portland, listing players, points, rebounds, and other statistics.

Portland 48 • 7-18, 0-10

Box score table for Portland vs BYU, listing players, points, rebounds, and other statistics.

Officials: Deldre Carr, Kelly Self, Mike Scyphers

Score by periods table for Portland vs BYU.

Last FG - BYU 2nd-00:23, UP 2nd-04:20. Largest lead - BYU by 37 2nd-05:09, UP by 2 1st-19:32.

Official Basketball Box Score -- Game Totals -- Final Statistics

Pacific vs BYU

02/09/19 7:00 pm at Provo, Utah, Marriott Center

Pacific 59 • 13-13

Box score table for Pacific vs BYU, listing players, points, rebounds, and other statistics.

BYU 69 • 16-10

Box score table for BYU vs Pacific, listing players, points, rebounds, and other statistics.

Officials: Mark Fulton, Winston Smith, Tommy Nunez

Score by periods table for BYU vs Pacific.

Last FG - PAC 2nd-07:06, BYU 2nd-03:33. Largest lead - PAC by 6 1st-14:57, BYU by 10 2nd-00:47.

Official Basketball Box Score -- Game Totals -- Final Statistics

Brigham Young vs San Diego

2/14/19 7 p.m. at San Diego, CA (Jenny Craig Pavilion)

Brigham Young 88 • 17-10, 9-3

Box score table for Brigham Young vs San Diego, listing players, points, rebounds, and other statistics.

San Diego 82 • 19-7, 5-6

Box score table for San Diego vs Brigham Young, listing players, points, rebounds, and other statistics.

Officials: Mike Reed (R), Casey McClellan (U1), Ryan McDaniel (U2)

Score by periods table for San Diego vs Brigham Young.

Last FG - BYU OT-01:14, USD 2nd-00:02. Largest lead - BYU by 6 OT-00:13, USD by 14 1st-12:20.

THE STAT CREW SYSTEM
BYU Combined Team Statistics (as of Feb 14, 2019)
All games

RECORD:	OVERALL	HOME	AWAY	NEUTRAL
ALL GAMES	17-10	12-2	4-7	1-1
CONFERENCE	9-3	5-1	4-2	0-0
NON-CONFERENCE	8-7	7-1	0-5	1-1

#	Player	gp-gs	min	Total		3-Point		F-Throw		Rebounds				pf	dq	a	to	blk	stl	pts	avg									
				fg-fga	fg%	3fg-fga	3fg%	ft-fa	ft%	off	def	tot	avg																	
23	CHILDS, Yoeli	27-27	903	33.4	221-430	.514	27-84	.321	103-146	.705	60	205	265	9.8	71	4	56	73	27	26	572	21.2								
30	HAWS, TJ	27-27	904	33.5	150-314	.478	49-138	.355	129-150	.860	7	93	100	3.7	60	1	137	57	8	33	478	17.7								
00	HARDNETT, Jahshire	20-15	475	23.8	67-157	.427	10-45	.222	50-61	.820	7	33	40	2.0	34	0	34	24	0	19	194	9.7								
02	SELJAAS, Zac	27-15	587	21.7	63-151	.417	37-103	.359	31-41	.756	25	68	93	3.4	52	1	35	24	11	20	194	7.2								
44	HARDING, Connor	27-14	552	20.4	61-126	.484	21-61	.344	32-49	.653	8	74	82	3.0	43	1	36	23	6	11	175	6.5								
04	EMERY, Nick	18-3	361	20.1	37-93	.398	21-56	.375	16-22	.727	2	25	27	1.5	46	2	31	15	1	20	111	6.2								
25	BAXTER, Gavin	26-4	326	12.5	45-73	.616	2-6	.333	14-29	.483	24	43	67	2.6	43	1	6	10	22	3	106	4.1								
33	NIXON, Dalton	22-8	295	13.4	29-66	.439	1-16	.063	21-29	.724	22	41	63	2.9	44	1	19	18	4	10	80	3.6								
24	CANNON, McKay	27-13	493	18.3	32-71	.451	19-47	.404	9-17	.529	8	30	38	1.4	40	0	43	14	0	21	92	3.4								
41	WORTHINGTON, Luke	27-9	305	11.3	33-63	.524	0-0	.000	23-36	.639	28	36	64	2.4	63	2	8	9	1	10	89	3.3								
01	BERGERSEN, Rylan	24-0	188	7.8	18-45	.400	7-24	.292	16-27	.593	1	24	25	1.0	18	0	12	9	4	2	59	2.5								
40	LEE, Kolby	15-0	44	2.9	8-20	.400	1-4	.250	3-10	.300	4	9	13	0.9	10	0	1	1	0	0	20	1.3								
21	TROY, Evan	10-0	20	2.0	1-5	.200	0-1	.000	0-2	.000	1	5	6	0.6	2	0	1	3	0	0	2	0.2								
13	MAUGHAN, Taylor	12-0	21	1.8	0-3	.000	0-3	.000	2-2	1.000	0	2	2	0.2	3	0	1	1	0	0	2	0.2								
Team											36	37	73		1		9													
Total.....		27	5474		765-1617	.473	195-588	.332	449-621	.723	233	725	958	35.5	530	13	420	290	84	175	2174	80.5								
Opponents.....		27	5477		707-1619	.437	214-595	.360	414-571	.725	276	714	990	36.7	548	13	363	356	69	143	2042	75.6								

TEAM STATISTICS	BYU	OPP	Date	Opponent	Score	Att.
SCORING	2174	2042	11/06/18	at Nevada	L 70-86	11094
Points per game	80.5	75.6	11/09/18	UTAH VALLEY	w 75-65	14628
Scoring margin	+4.9	-	11/13/18	NORTHWESTERN ST.	w 82-57	10886
FIELD GOALS-ATT	765-1617	707-1619	11/15/18	ORAL ROBERTS	w 85-65	10179
Field goal pct	.473	.437	11/17/18	ALABAMA A&M	w 91-60	12206
3 POINT FG-ATT	195-588	214-595	11/21/18	RICE	w 105-78	11631
3-point FG pct	.332	.360	11/24/18	HOUSTON	L 62-76	10959
3-pt FG made per game	7.2	7.9	11/28/18	at Illinois State	Lot 89-92	6187
FREE THROWS-ATT	449-621	414-571	12/01/18	at Weber State	L 103-113	9731
Free throw pct	.723	.725	12/05/18	UTAH ST.	w 95-80	11377
F-Throws made per game	16.6	15.3	12/08/18	vs Utah	w 74-59	10678
REBOUNDS	958	990	12/12/18	PORTLAND ST.	w 85-66	11563
Rebounds per game	35.5	36.7	12/15/18	vs UNLV	Lot 90-92	5107
Rebounding margin	-1.2	-	12/22/18	at SAN DIEGO STATE	L 81-90	11321
ASSISTS	420	363	12/29/18	at Mississippi State	L 81-103	10202
Assists per game	15.6	13.4	* 01/03/19	at Pacific	w 90-87	2490
TURNOVERS	290	356	* 01/05/19	at Saint Mary's (CA)	L 66-88	3500
Turnovers per game	10.7	13.2	* 01/10/19	PORTLAND	w 79-56	10733
Turnover margin	+2.4	-	* 01/12/19	SANTA CLARA	w 80-74	12709
Assist/turnover ratio	1.4	1.0	* 01/17/19	at Pepperdine	w 87-76	1714
STEALS	175	143	* 01/19/19	at San Francisco	L 63-82	3005
Steals per game	6.5	5.3	* 01/24/19	SAINT MARY'S (CA)	w 71-66	11427
BLOCKS	84	69	* 01/31/19	GONZAGA	L 63-93	15396
Blocks per game	3.1	2.6	* 02/02/19	LOYOLA MARYMOUNT	w 67-49	11643
ATTENDANCE	166743	79461	* 02/07/19	at Portland	w 83-48	2581
Home games-Avg/Game	14-11910	11-5789	* 02/09/19	PACIFIC	w 69-59	11406
Neutral site-Avg/Game	-	2-7892	* 2/14/19	at San Diego	Wot 88-82	1851

Score by Periods	1st	2nd	OT	Totals
BYU	1011	1132	31	2174
Opponents	942	1070	30	2042

* = Conference game

THE STAT CREW SYSTEM
BYU Combined Team Statistics (as of Feb 14, 2019)
Conference games

RECORD:	OVERALL	HOME	AWAY	NEUTRAL
ALL GAMES	9-3	5-1	4-2	0-0
CONFERENCE	9-3	5-1	4-2	0-0
NON-CONFERENCE	0-0	0-0	0-0	0-0

#	Player	gp-gs	min	avg	Total		3-Point		F-Throw		Rebounds			pf	dq	a	to	blk	stl	pts	avg		
					fg-fga	fg%	3fg-fga	3fg%	ft-fa	ft%	off	def	tot									avg	
23	CHILDS, Yoeli	12-12	411	34.2	87-188	.463	15-43	.349	49-73	.671	26	88	114	9.5	31	2	16	33	10	13	238	19.8	
30	HAWS, TJ	12-12	402	33.5	64-136	.471	18-57	.316	73-86	.849	3	34	37	3.1	28	0	62	26	2	17	219	18.3	
25	BAXTER, Gavin	12-4	209	17.4	34-52	.654	2-4	.500	10-16	.625	17	28	45	3.8	24	1	4	6	14	3	80	6.7	
04	EMERY, Nick	12-3	248	20.7	25-63	.397	15-37	.405	14-19	.737	2	17	19	1.6	27	1	19	9	1	13	79	6.6	
02	SELJAAS, Zac	12-0	235	19.6	25-53	.472	14-36	.389	9-14	.643	10	30	40	3.3	24	0	11	8	4	6	73	6.1	
00	HARDNETT, Jahshire	5-0	70	14.0	8-26	.308	2-10	.200	8-9	.889	1	4	5	1.0	7	0	5	4	0	0	26	5.2	
44	HARDING, Connor	12-9	241	20.1	21-46	.457	9-22	.409	10-16	.625	2	24	26	2.2	16	0	16	9	3	5	61	5.1	
24	CANNON, McKay	12-12	310	25.8	19-38	.500	14-27	.519	7-14	.500	6	18	24	2.0	22	0	25	5	0	17	59	4.9	
41	WORTHINGTON, Luke	12-8	164	13.7	18-34	.529	0-0	.000	7-17	.412	16	13	29	2.4	34	1	5	7	0	3	43	3.6	
01	BERGERSEN, Rylan	11-0	64	5.8	5-14	.357	1-5	.200	4-7	.571	1	5	6	0.5	9	0	5	4	2	0	15	1.4	
33	NIXON, Dalton	8-0	50	6.3	2-9	.222	0-1	.000	3-4	.750	1	10	11	1.4	7	0	1	1	1	3	7	0.9	
40	LEE, Kolby	6-0	9	1.5	2-4	.500	0-0	.000	0-4	.000	1	2	3	0.5	1	0	0	0	0	0	4	0.7	
13	MAUGHAN, Taylor	5-0	8	1.6	0-1	.000	0-1	.000	2-2	1.000	0	0	0	0.0	1	0	0	0	0	0	2	0.4	
21	TROY, Evan	3-0	4	1.3	0-0	.000	0-0	.000	0-2	.000	1	1	2	0.7	1	0	1	1	0	0	0	0.0	
Team											10	13	23										
Total.....		12	2425		310-664	.467	90-243	.370	196-283	.693	97	287	384	32.0	232	5	170	119	37	80	906	75.5	
Opponents.....		12	2425		301-654	.460	88-237	.371	170-236	.720	104	305	409	34.1	237	4	145	162	24	55	860	71.7	

TEAM STATISTICS	BYU	OPP	Date	Opponent	Score	Att.
SCORING	906	860	* 01/03/19	at Pacific	w 90-87	2490
Points per game	75.5	71.7	* 01/05/19	at Saint Mary's (CA)	L 66-88	3500
Scoring margin	+3.8	-	* 01/10/19	PORTLAND	w 79-56	10733
FIELD GOALS-ATT	310-664	301-654	* 01/12/19	SANTA CLARA	w 80-74	12709
Field goal pct	.467	.460	* 01/17/19	at Pepperdine	w 87-76	1714
3 POINT FG-ATT	90-243	88-237	* 01/19/19	at San Francisco	L 63-82	3005
3-point FG pct	.370	.371	* 01/24/19	SAINT MARY'S (CA)	w 71-66	11427
3-pt FG made per game	7.5	7.3	* 01/31/19	GONZAGA	L 63-93	15396
FREE THROWS-ATT	196-283	170-236	* 02/02/19	LOYOLA MARYMOUNT	w 67-49	11643
Free throw pct	.693	.720	* 02/07/19	at Portland	w 83-48	2581
F-Throws made per game	16.3	14.2	* 02/09/19	PACIFIC	w 69-59	11406
REBOUNDS	384	409	* 2/14/19	at San Diego	Wot 88-82	1851
Rebounds per game	32.0	34.1				
Rebounding margin	-2.1	-	* = Conference game			
ASSISTS	170	145				
Assists per game	14.2	12.1				
TURNOVERS	119	162				
Turnovers per game	9.9	13.5				
Turnover margin	+3.6	-				
Assist/turnover ratio	1.4	0.9				
STEALS	80	55				
Steals per game	6.7	4.6				
BLOCKS	37	24				
Blocks per game	3.1	2.0				
ATTENDANCE	73314	15141				
Home games-Avg/Game	6-12219	6-2524				
Neutral site-Avg/Game	-	0-0				

Score by Periods	1st	2nd	OT	Totals
BYU	413	480	13	906
Opponents	403	450	7	860



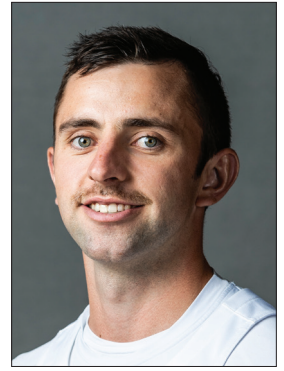
#0 JAHSHIRE HARDNETT
6-0 | 185 | Junior | Guard
Gulfport, Mississippi | Chipola College



#1 RYLAN BERGERSEN
6-6 | 200 | Sophomore | Guard
Boise, Idaho | Link Year



#2 ZAC SELJAAS
6-7 | 215 | Junior | Guard
Bountiful, Utah | Bountiful HS



#4 NICK EMERY
6-2 | 185 | Junior | Guard
Alpine, Utah | Lone Peak HS



#10 JESSE WADE
6-1 | 175 | Sophomore | Guard
Kaysville, Utah | Gonzaga



#13 TAYLOR MAUGHAN
6-4 | 200 | Junior | Guard
Fullerton, California | BYU-Hawaii



#21 EVAN TROY
6-5 | 180 | Junior | Guard
Longview, Washington | Mark Morris HS



#23 YOELI CHILDS
6-8 | 225 | Junior | Forward
South Jordan, Utah | Bingham HS



#24 MCKAY CANNON
6-0 | 185 | Senior | Guard
Shelley, Idaho | Weber State



#25 GAVIN BAXTER
6-9 | 210 | Freshman | Forward
Provo, Utah | Timpview HS



#30 TJ HAWS
6-4 | 170 | Junior | Guard
Alpine, Utah | Lone Peak HS



#33 DALTON NIXON
6-7 | 215 | Junior | Forward
Orem, Utah | Orem HS



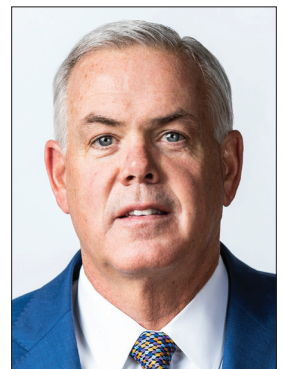
#40 KOLBY LEE
6-9 | 240 | Freshman | Forward
Meridian, Idaho | Rocky Mountain HS



#41 LUKE WORTHINGTON
6-10 | 235 | Senior | Forward
Mequon, Wisconsin | Homestead HS



#44 CONNOR HARDING
6-6 | 185 | Freshman | Guard
Pocatello, Idaho | Highland HS



DAVE ROSE
Head Coach (13th season)