

2018-19 PACIFIC TIGERS

GAME NOTES

GAME 23 - FEBRUARY 9, 2019

PACIFIC TIGERS

15-7 OVERALL • 8-4 WEST COAST (T-3RD)
AP POLL: NR; COACHES POLL: NR; MID-MAJOR POLL: RV
VS.

BYU COUGARS

17-6 OVERALL • 9-3 WEST COAST (2ND)
AP POLL: RV; COACHES POLL: NR; MID-MAJOR POLL: 7TH

SCHEDULE & RESULTS

DAY	DATE	OPPONENT	VIDEO	TIME/SCORE
FRI	Nov. 2	S.F. STATE #		W, 89-41
THU	Nov. 8	WILLIAM JESSUP	THEW.TV	CANCELLED
SUN	Nov. 11	@UC DAVIS		W, 83-80
SUN	Nov 18	@ #23 CALIFORNIA	PAC12	L, 81-69
*MOVED TO STANFORD DUE TO AIR QUALITY				
TIGER TURKEY TIP-OFF (ALEX G. SPANOS CENTER)				
FRI	Nov. 23	NDSU	THEW.TV	W, 75-68
SAT	Nov. 24	WYOMING	THEW.TV	W, 70-64
THUR	Nov. 29	@ SAN JOSE ST.	THEW.TV	W, 91-67
THUR	Dec. 6	SEATTLE	THEW.TV	W, 75-61
SAT	Dec. 8	UCSB	THEW.TV	W, 69-53
MON	Dec. 17	@ UCF	UCFKNIGHTS.TV(\$)	L, 64-57
THU	Dec. 20	@LAMAR	ESPN3	L, 82-66
SAT	Dec. 22	@CSU FULLERTON	BigWest.TV	W, 72-64
MON	Dec. 31	SAINT MARY'S *	THEW.TV	W, 76-67
THU	JAN. 3	@PORTLAND*	THEW.TV	W, 76-66
SAT	JAN. 5	@#17/18GONZAGA *THEW.TV		L, 68-65
THU	JAN. 10	BYU *	THEW.TV	L, 77-74
SAT	JAN. 12	SAN DIEGO *	THEW.TV	W, 79-47
THUR	JAN. 17	@ SANTA CLARA *	THEW.TV	W, 74-70
SAT	JAN. 19	@ SAN FRANCISCO *	THEW.TV	W, 85-75
THUR	JAN. 24	LMU *	THEW.TV	L, 72-67
SAT	JAN. 26	PEPPERDINE*	THEW.TV	W, 78-67
THUR	JAN. 31	#15/#17 GONZAGA *THEW.TV		L, 63-51
SAT	FEB. 2	PORTLAND *	THEW.TV	W, 87-77
THU	FEB. 7	@ SAN DIEGO *	THEW.TV	W, 70-53
SAT	FEB. 9	@BYU*	THEW.TV	1 P.M.
THUR	FEB. 14	SAN FRANCISCO*	THEW.TV	7 P.M.
SAT	FEB. 16	SANTA CLARA *	THEW.TV	2 P.M.
THU	FEB. 21	@PEPPERDINE *	THEW.TV	7 P.M.
SAT	FEB. 23	@LMU *	THEW.TV	2 P.M.
SAT	MAR. 2	@SAINT MARY'S*	THEW.TV	2 P.M.
WCC CHAMPIONSHIP (LAS VEGAS - ORLEANS ARENA)				
THUR	MAR. 7	* FIRST ROUND	THEW.TV	TBD
FRI	MAR. 8	* SECOND ROUND	THEW.TV	TBD
SAT	MAR. 9	* QUARTERFINALS	THEW.TV	TBD
MON	MAR. 11	* SEMIFINALS	THEW.TV	TBD
TUE	MAR. 12	* CHAMPIONSHIP	ESPNU	1:00
ALL TIMES PACIFIC				

PRONUNCIATIONS (& STYLE GUIDE)

#0 Chelsea LidyLydee
 #2 Josephine MillardMee Ard (French pronunciation)
 #5 Sofie TryggedssonTroy ged son
 #10 Savannah Sumson.....Sumshun
 #21 Ameela LiUh ME la Lee
 #23 Lianna Tillman.....Lee On Uh
 #24 Kaylin Randhawa Rond ow Uh
 Please Use: University of the Pacific, Pacific, Tigers
 Please Don't Use: Lady Tigers (ever) or UOP (on first reference/graphics).
 5th Season in West Coast Conference (joined for 2013-14, from Big West)

Tale of the Tape



Head Coach: Bradley Davis (Fourth season)

2018-19

Record.....15-7, (8-4 WCC)
 at home8-3
 on the road7-3
 neutral.....0-1

Individual Leaders

PPG.....Valerie Higgins (16.6)
 RPGValeire Higgins (8.8)
 APGAmeela Li (4.9)
 FG%Brooklyn McDavid (49.3%)

Team Averages

PPG.....73.1
 Rebounds.....38.0
 Assists16.1
 FG%41.7%



Head Coach: Jeff Judkins (17th season)

2018-19

Record.....17-6, (9-3 WCC)
 at home8-2
 on the road7-4
 neutral.....2-0

Individual Leaders

PPG.....Shaylee Gonzalez (16.0)
 RPGJasmine Moody (5.8)
 APGShaylee Gonzalez (4.1)
 FG%Jasmine Moody (53.3%)

Team Averages

PPG.....67.6
 Rebounds.....38.1
 Assists15.5
 FG%41.5%

TIGERS AT A GLANCE

Last time out...

Pacific wrapped up the regular season sweep of the San Diego Toreros with a 70-53 victory at the Jenny Craig Pavilion. Sophomores Brooklyn McDavid and Valerie Higgins both scored 20 points in the game.

Chasing 1,000...

The sun is setting on senior guard Ameela Li's stellar career, but there is still time for the guard to leave her mark. As of today, her career point total stands at 943. She is on pace to surpass the 1,000 point mark before the end of the regular season. When she gets there, she will be the 24th player in program history to score 1,000 points.

Catch her on the court and she's trouble...

Valerie Higgins' first season in the WCC has been impactful to say the least. Higgins has asserted herself as a force on both ends of the floor and as a candidate for All-Conference honors. She's the league leader in steals and double-doubles, free throws made and free throws attempted. She is top-10 in points per game, rebounds per game, assists per game, free throw percentage, blocks, offensive boards and defensive boards. Her 70 steals this season is seventh best in single-season history at Pacific. She is the only player in the league averaging a points and rebounds double-double.

Strong starts...

A key for Pacific this year has been how it starts games. The Tigers have trailed just four times after the first quarter this year and are 11-4 when they take a lead into the second quarter.

Movin' on up...

Pacific head coach Bradley Davis won his 53rd game of his career on Thursday at San Diego, placing him in fifth on Pacific's all-time wins list surpassing Julie Sullivan who coached the Tigers from 1984-88.

Race to 70...

The Tigers are 14-1 when scoring 70+ points this season. The sole loss came against BYU, which got to the 70-point plateau before the Tigers.

League Leaders...

Pacific either leads the league as individuals or as a team in the following categories:

- Assists per game (Ameela Li, 4.9)
- Double doubles (Valerie Higgins, 9)
- Steals per game (Valerie Higgins, 3.3/g)
- Free throws made (Valerie Higgins, 104)
- Free throws attempted (Valerie Higgins, 131)
- Steals (Valerie Higgins, 72)
- Steals per game (Valerie Higgins, 3.3)
- Steals per game (team, 10.0)
- Turnovers forced per game (team, 17.5)

Series history against BYU...

- **Series record:** BYU leads 13-3
- **Last meeting:** 2019, BYU won 77-74
- **First meeting:** 1982, BYU won 93-74
- **Last Tiger win:** 2015, 86-82
- **Last Cougar win:** 2019, 77-74
- **Biggest Tiger win:** 2014, 75-62 (13 points)
- **Biggest Tiger loss:** 1982, 93-74 (19 points)

Scouting the Cougars...

Since the Tigers and Cougars met on Jan. 10, BYU has hit a rough patch. The Cougars cracked the Top-25 last week following a win over Gonzaga, but have fallen back out and are currently on a three-game losing streak to Loyola Marymount, Pepperdine and Saint Mary's. The Tigers can make it four-straight losses for the Cougars on Saturday.

STARTING LINEUPS

Opp	G	G	G	F
1 WMJ	CANCELLED			
2 UCD	Blakeslee	Li	Higgins	King McDavid
3 CAL	Blakeslee	Li	Higgins	King McDavid
4 NDSU	Blakeslee	Li	Higgins	King McDavid
5 WYO	Blakeslee	Li	Higgins	King McDavid
6 SJSU	Blakeslee	Li	Higgins	King McDavid
7 SEA	Blakeslee	Li	Higgins	King McDavid
8 UCSB	Blakeslee	Li	Higgins	King McDavid
9 UCF	Blakeslee	Tillman	Higgins	Newman McDavid
10 LAM	Tillman	Li	Higgins	Newman McDavid
11 CSF	Blakeslee	Li	Higgins	Newman McDavid
12 SMC	Blakeslee	Li	Higgins	Newman McDavid
13 PORT	Blakeslee	Li	Higgins	Newman McDavid
14 ZAGS	Blakeslee	Li	Higgins	Newman McDavid
15 BYU	Blakeslee	Li	Higgins	Newman McDavid
16 USD	Blakeslee	Li	Higgins	Newman McDavid
17 SCU	Blakeslee	Li	Higgins	Newman McDavid
18 USF	Blakeslee	Li	Higgins	Newman McDavid
19 LMU	Blakeslee	Li	Higgins	Newman McDavid
20 PEP	Blakeslee	Li	Higgins	Newman McDavid
21 ZAGS	Blakeslee	Li	Higgins	Newman McDavid
22 PORT	Blakeslee	Li	Higgins	Newman McDavid
23 USD	Blakeslee	Li	Higgins	Newman McDavid
24 BYU				
25 USF				
26 SCU				
27 PEP				
28 LMU				
29 SMC				

BY LINEUPS 2018-19

Gms	W-L	G	G	G	F
12	9-3	Blakeslee	Li	Higgins	Newman McDavid
7	6-1	King	Li	Blakeslee	Higgins McDavid
1	0-1	Tillman	Newman	Blakeslee	Higgins McDavid
1	0-1	Tillman	Newman	Li	Higgins McDavid

BY LINEUPS 2017-18

Gms	W-L	G	G	F	F	
8	4-4	Luauu-Summers	Li	Blakeslee	McDavid	Sumsion
7	4-3	Luauu-Summers	Li	Finnie	Sumsion	Grant
7	2-5	Luauu-Summers	Li	Finnie	McDavid	Grant
4	3-1	Luauu-Summers	Li	Lidy	McDavid	Grant
3	2-1	Luauu-Summers	Li	Blakeslee	McDavid	Grant
2	0-2	Li	Lidy	Finnie	McDavid	Grant
1	0-1	Luauu-Summers	Li	Lidy	McDavid	Sumsion

SERIES RECORDS

2017-18 Opps	Conf	W-L	Last Mtg*	Last Win
William Jessup..	NAIA	2-0	W, 2017-18	W, 2017-18
UC Davis	BWC	14-15	W, 2018-19	W, 2018-19
California	P-12	2-25	L, 2018-19	W, 1996-97
NDSU	SUM	1-0	W, 2018-19	W, 2018-19
Wyoming	MWC	1-0	W, 2018-19	W, 2018-19
San Jose State	MWC	36-13	W, 2018-19	W, 2018-19
Seattle U.	WAC	5-0	W, 2018-19	W, 2018-19
UC Santa Barbara	BWC	21-51	W, 2018-19	W, 2018-19
UCF	AAC	1-1	L, 2018-19	W, 2017-18
Lamar	SOL	2-1	L, 2018-19	W, 2017-18
CSU Fullerton	BWC	40-23	W, 2018-19	W, 2018-19
Saint Mary's	WCC	14-19	W, 2018-19	W, 2018-19
Portland	WCC	13-9	W, 2018-19	W, 2018-19
Gonzaga	WCC	5-9	L, 2018-19	W, 2016-17
BYU	WCC	4-13	L, 2018-19	W, 2017-18
San Deigo	WCC	7-17	W, 2018-19	W, 2018-19
Santa Clara	WCC	24-29	W, 2018-19	W, 2018-19
San Francisco	WCC	17-23	L, 2017-18	W, 2016-17
LMU	WCC	4-8	L, 2018-19	W, 2014-15
Pepperdine	WCC	10-5	W, 2017-18	W, 2017-18

PACIFIC TIGERS ROSTER

#	Player	Ht.	Pos.	Yr	Hometown/High School (Last College)
0	Chelsea Lidy	G	5-9	Sr.	Torrance, Calif. / Bishop Montgomery
1	Anaya Brooklyn	F	6-1	So.	Studio City, Calif. / Bishop Alemany
2	Josephine Millard	G	6-2	Fr.	Nancy, France / Academie De Nancy - Metz
3	Isabel Newman	G	6-0	So.	Simi Valley, Calif. / Chaminademe
5	Sofie Tryggedsson	G/F	6-0	Sr.	Aarhus, Denmark / Colorado State
10	Savannah Sumsion	F	6-2	So.	Springville, Utah / Springville
12	Cassidy Johnson	C	6-5	Fr.	Lehi, Utah / Lehi
14	Jessica Blakeslee	G	5-10	Jr.	Mercer Island, Wash. / Mercer Island
21	Ameela Li	G	5-6	Sr.	Piedmont, Calif. / Piedmont
22	Valerie Higgins	G	6-1	Rs-So.	Granda Hills, Calif. / Chaminade
23	Lianna Tillman	G	5-9	So.	Stockton, Calif. / Lincoln
24	Kaylin Randhawa	G	6-2	Fr.	Turlock, Calif. / Pitman
33	Isabele Parker	F	6-2	So.	Brisbane, Australia / Brisbane State
RS	Callie Kaiser	G	5-10	RS	Broomfield, Colo. / Colorado State
RS	Retta Kakala	C	6-2	RS Fr.	Manteca, Calif. / Louisville
RS	Jordan Cruz	G	5-11	RS Fr.	Sacramento, Calif. / Utah

Head Coach: Bradley Davis (Fourth Season; California, 1995)

Associate Head Coach: Amy Starr (Fourth Season; Washington State, 1997)

Assistant Coach: Amanda Brown (Second Season; Gonzaga, 2009)

Assistant Coach: Lindsey Moore (First Season; Nebraska, 2013)

Director of Women's Operations: Amanda Leland (Sixth Season; Kansas, 2005)

Video Coordinator: Brandon Love (Second Season; Vanderbilt, 2011)

HEAD COACH BRADLEY DAVIS

FOURTH SEASON AS HEAD COACH - CALIFORNIA (1995)

Bradley Davis enters his fourth season as the head coach of the Tigers in 2018-19. He was named the Tigers' 10th Head Coach in program history on Thursday, April 23, 2015. This season marks his 13th season with Pacific with the previous three seasons as the Associate Head Coach under Lynne Roberts.

In his first year as head coach, Davis guided the team through an injury plagued campaign with a 13-17 overall record. Of the Tigers wins in 2015-16, Pacific posted signature victories at North Carolina and at home over Gonzaga. Senior Halie Eackles was named First Team All-West Coast Conference, while Desire Finnie earned All-WCC honorable mention accolades.

In 2016-17, Davis' squad finished with a 10-21 overall mark, advancing to the quarterfinals of the West Coast Conference tournament and pulling off the program's second road win at Gonzaga in the Tigers' four years in the WCC. Guard GeAnna Luauu-Summers was named to the All-West Coast Conference First Team.

2017-18 featured the Tigers deepest run in the WCC Championship tournament since the 2013-14 season when the Tigers reached the semifinals before falling to San Diego. Pacific posted a 15-17 record, which was the second-best win loss record for any Tiger head coach in their third season. Pacific posted a 10-7 record at home with big wins over UCF and BYU. Pacific's run in the WCC Championship helped Luauu-Summers to an All-WCC Tournament selection, the Tigers first since the 2013-14 season. Luauu-Summers also garnered first team All-WCC honors while Ameela Li and Brooklyn McDavid earned honorable mention nods. McDavid also earned the first WCC All-Freshman team selection since Luauu-Summers won on in 2014-15.

During his tenure on the staff, Tigers have earned six first team All-Conference award winners as well as four second team selections, and 11 honorable mention honors. Six Tigers have earned All-Freshmen team honors.

In addition, Davis coaches the Tigers' posts on the practice floor, helping the development of six posts into All-Conference players: Karen Dawkins (Honorable Mention 2007), Kendall Kenyon (Second Team 2013, First Team 2014), Danielle Peacon (Honorable Mention 2011), Kendall Rodriguez (First Team 2012, 2013), Amber Simmons (First Team 2009) and Christina Thompson (Honorable Mention 2010). Thompson also was named the Big West Sixth Woman of the Year in 2010.

While Davis has been with Pacific, the Tigers have been among the top of their conference in scoring offense and transformed into a top contender in the Big West, setting a program record with 27 wins and winning the conference title in 2013. Pacific reached the post season four-straight years with WNIT appearances. The Tigers advanced to the second round in 2012 and the third round in 2013 before moving on to the West Coast Conference.

Outside of the basketball arena, Davis was also the Tigers' academic support coach for its student-athletes, where he helped Pacific with a perfect score of 1,000 out of 1,000 in Academic Progress Rate (APR).

Prior to coming to Pacific, Davis was the varsity girls' head coach at Chico High School in 2005-06, where he coached the Panthers to a Northern Section CIF Division I Championship. From 2003-05, Davis was the head coach at Durham High School, where he went 52-10 over two seasons. Overall, as a head coach, Davis posted a 78-13 (.857) record while advancing to the CIF State Championship tournament all three seasons. Davis also coached eight players that went on to play collegiate basketball including two that played Division I.

In addition to his coaching, Davis spent eight years as an English teacher at Chico High School. He earned his bachelor's degree in English from California in 1995 and his teaching credential from Chico State in 1998.

Originally from Southern California, Davis spent most of his youth overseas with his family, living in Zaire, South Africa, Bahrain and Switzerland, where he graduated from high school in Geneva.

Davis now resides in Stockton, Calif., with his wife, Corrie Nichols Davis. Basketball runs deep throughout the family as the couple met on the sidelines while coaching together. They have two daughters, Genevieve (born in 2005) and Esme (born in 2009).



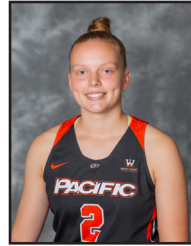
T. V. Roster



#0
Chelsea Lidy
(Ly-dee)
Senior | G
Torrance, Calif.



#1
Brooklyn McDavid
Sophomore | F
Studio City, Calif.



#2
Josephine Millard
Freshman | G
Nancy, France



#3
Isabel Newman
Sophomore | G
Simi Valley, Calif.



#5
Sofie Tryggedsson
(Troy-ged-son)
Senior | G/F
Aarhus, Denmark
Redshirting
Trans. from Colorado St.



#10
Savannah Sumsion
(SUMSHUN)
Sophomore | F
Springville, Utah
On mission trip



#12
Cassidy Johnson
Freshman | C
Lehi, Utah
Redshirting due to injury



#14
Jessica Blakeslee
Junior | G
Mercer Island, Wash.



#21
Ameela Li
(Ah ME lah Lee)
Senior | G
Piedmont, Calif.



#22
Valerie Higgins
Rs. So. | G
Granada Hills, Calif.
Trans. from USC



#23
Lianna Tillman
(Lee On Uh)
Sophomore | G
Stockton, Calif.



#24
Kaylin Randhawa
(Rond How Uh)
Freshman | G
Turlock, Calif.



#33
Isabelle Parker
Sophomore | F
Brisbane, Australia



RS
Callie Kaiser
Rs. Sr. | G
Broomfield, Colo.
Redshirting
Trans. from Colorado St.



RS
Retta Kakala
Rs. Fr. | C
Manteca, Calif.
Redshirting
Trans. from Louisville



RS
Jordan Cruz
Rs. Fr. | G
Sacramento, Calif.
Redshirting
Trans. from Utah

TIGER TRENDS

.....	17-18	18-19
At Spanos Center.....	10-7	8-3
On the Road.....	3-9	7-3
At a Neutral Site.....	2-1	0-1
vs Ranked.....	0-1	0-3
After a Win.....	8-8	9-5
After a Loss.....	8-12	5-2
Game Decided by 1-5 points.....	3-3	2-2
Game Decided by 6-9 points.....	3-2	5-1
Game Decided by 10+ points.....	10-11	8-4
Pacific Scores: 30-39.....	0-0	0-0
Pacific Scores: 40-49.....	0-0	0-0
Pacific Scores: 50-59.....	1-4	0-2
Pacific Scores: 60-69.....	0-5	1-4
Pacific Scores: 70-79.....	2-4	10-1
Pacific Scores: 80-89.....	8-2	3-0
Pacific Scores: 90+.....	3-0	1-0
Pacific Allows: 0-39.....	1-0	0-0
Pacific Allows: 40-49.....	0-0	1-0
Pacific Allows: 50-59.....	2-0	2-0
Pacific Allows: 60-69.....	2-2	8-2
Pacific Allows: 70-79.....	7-6	3-2
Pacific Allows: 80-89.....	0-3	1-3
Pacific Allows: 90+.....	1-5	0-0
Leading after 1 Quarter.....	7-1	11-4
Trailing after 1 Quarter.....	2-11	2-2
Tied after 1 Quarter.....	0-0	2-1
Leading at the Half.....	10-0	12-2
Trailing at the Half.....	2-12	3-5
Tied at the Half.....	0-1	0-0
Leading after 3 Quarters.....	11-0	15-0
Trailing after 3 Quarters.....	2-12	0-7
Tied after 3 Quarters.....	0-0	0-0
Higher FG% than Opponent.....	8-1	7-2
Lower FG% than Opponent.....	3-13	8-5
Equal FG% as Opponent.....	0-0	0-0
Hitting 8+ Three-Pointers.....	3-3	3-2
Shooting 40.0% or better.....	10-5	13-4
More Rebounds than Opponent.....	10-1	11-1
Fewer Rebounds than Opponent.....	2-12	4-5
Same Rebounds as Opponent.....	0-0	0-1
More Points in the Paint than Opponent.....	8-1	11-1
Fewer Points in the Paint than Opponent.....	3-13	3-6
Same Points in the Paint as Opponent.....	1-0	0-0
More Free Throw Att. than Opponent.....	4-3	8-0
Fewer Free Throw Att. than Opponent.....	7-10	6-8
Same Free Throw Att. as Opponent.....	1-1	0-0
Attempting less than 20 free throws.....	4-10	8-6
Attempting 20+ free throws.....	8-3	7-0
More Turnovers than Opponent.....	3-5	0-5
Fewer Turnovers than Opponent.....	9-8	14-2
Same Turnovers as Opponent.....	0-0	0-0
Forcing under 20 Turnovers.....	8-10	7-7
Forcing 20+ Turnovers by Opponent.....	4-2	5-0
More Fastbreak Points than Opponent.....	8-6	7-2
0 player in double figures.....	0-0	0-0
1 player in double figures.....	1-0	0-0
2 players in double figures.....	0-3	3-1
3 players in double figures.....	2-5	9-3
4 players in double figures.....	3-3	4-2
5+ players in double figures.....	6-2	0-0
White Uniforms.....	8-6	9-3
Orange Uniforms.....	0-3	1-2
Black Uniforms.....	3-4	5-2
Pink Uniforms.....	1-0	0-0
Day Games (before 5 pm).....	5-8	9-3
Night Games (5 pm or later).....	7-5	6-4

PACIFIC VS. THE NCAA

(As of 2/7)

Statistic	National Rank	Conference Rank	Value	National Leader	Value	Conference Leader	Value
Assist Turnover Ratio (349 ranked)	65	3	1.02	Oregon	1.87	Gonzaga	1.16
Assists (349 ranked)	105	6	303	Iowa	488	Saint Mary's (CA)	376
Assists Per Game (349 ranked)	95	6	14.4	Baylor	23.2	Saint Mary's (CA)	17.1
Blocked Shots (349 ranked)	201	6	62	Baylor	147	BYU	90
Blocked Shots Per Game (349 ranked)	201	6	3.0	Baylor	7.0	Santa Clara	90
Defensive Rebounds per Game (30 ranked)				Baylor	33	Saint Mary's (CA)	29
Fewest Fouls (345 ranked)	232	8	390	Penn	206	Santa Clara	321
Fewest Turnovers (349 ranked)	56	2	296	Wyoming	204	Pepperdine	270
Field-Goal Percentage (349 ranked)	118	5	41.5	Iowa	52.3	Saint Mary's (CA)	48.5
Field-Goal Percentage Defense (349 ranked)	274	8	41.9	Baylor	31.4	Gonzaga	37.6
Free Throw Attempts (349 ranked)	141	6	384	Sam Houston St.	548	Loyola Marymount	496
Free Throws Made (349 ranked)	71	5	287	Sam Houston St.	390	Gonzaga	313
Free-Throw Percentage (349 ranked)	32	3	74.7	Virginia Tech	79.2	Portland	77.0
Offensive Rebounds per Game (30 ranked)				Troy	22	Loyola Marymount	15
Personal Fouls Per Game (349 ranked)	245	9	18.6	UCConn	11.7	Gonzaga	15.1
Rebound Margin (349 ranked)	163	7	0.8	Baylor	17.3	Saint Mary's (CA)	7.4
Rebounds (349 ranked)	173	8	804	Miami (FL)	1,027	Loyola Marymount	934
Rebounds Per Game (349 ranked)	147	6	38.29	Troy	51.10	Loyola Marymount	40.61
Scoring Defense (349 ranked)	276	6	69.2	Drexel	48.5	Gonzaga	57.5
Scoring Margin (349 ranked)	130	4	4.1	Mississippi St.	33.8	Gonzaga	16.2
Scoring Offense (349 ranked)	58	4	73.3	Oregon	89.6	Saint Mary's (CA)	76.5
Steals (349 ranked)	46	2	211	Hartford	313	Gonzaga	233
Steals Per Game (349 ranked)	47	2	10.0	Lamar University	15.7	Gonzaga	10.1
Three Pt FG Defense (349 ranked)	234	6	32.4	Drexel	22.8	Gonzaga	27.6
Three-Point Field Goals Attempted (148 ranked)				DePaul	777	Portland	562
Three-Point Field Goals Made (349 ranked)	145	4	132	DePaul	258	Saint Mary's (CA)	192
Three-Point Field Goals Per Game (349 ranked)	138	4	6.3	DePaul	11.7	Saint Mary's (CA)	8.7
Three-Point Field-Goal Percentage (349 ranked)	110	4	32.8	Oregon St.	43.0	Saint Mary's (CA)	38.6
Turnover Margin (349 ranked)	47	2	3.29	Lamar University	10.95	Gonzaga	3.87
Turnovers Forced (349 ranked)	111	2	17.38	Lamar University	25.85	Gonzaga	17.61
Turnovers Per Game (349 ranked)	61	3	14.1	Oregon	10.8	Pepperdine	12.9
Won-Lost Percentage (349 ranked)	89	3	66.74	teams tied	95.5	Gonzaga	91.3

Statistic	Player	National Rank	Conference Rank	Value	National Leader	Value	Conference Leader	Value
Assist Turnover Ratio (250 ranked)	Ameela Li	119	6	1.73	Jazzmun Holmes, Mississippi St.	4.44	Barbara Sitanggan, Pepperdine	3.36
Assists (146 ranked)	Ameela Li	80	3	97	Sabrina Ionescu, Oregon	184	Andee Velasco, Loyola Marymount	104
Assists Per Game (250 ranked)	Ameela Li	61	1	4.9	Sabrina Ionescu, Oregon	8.4	Ameela Li, Pacific	4.9
Blocked Shots (141 ranked)					Channon Fluker, CSUN	81	Lauren Yearwood, Santa Clara	54
Blocked Shots Per Game (248 ranked)	Valerie Higgins	161	3	1.19	Channon Fluker, CSUN	3.68	Lauren Yearwood, Santa Clara	2.57
Defensive Rebounds per Game (30 ranked)					Kristine Anigwe, California	10		
Double Doubles (50 ranked)	Valerie Higgins	36	1	9	Kristine Anigwe, California	21	Valerie Higgins, Pacific	9
Field Goal Attempts (143 ranked)	Brooklyn McDavid	113	3	290	Kierra Anthony, Louisiana Tech	410	Yasmine Robinson-Bacote, Pepperdine	340
Field Goals Made (144 ranked)	Brooklyn McDavid	67	2	140	Megan Gustafson, Iowa	245	Yasmine Robinson-Bacote, Pepperdine	152
Field-Goal Percentage (250 ranked)	Brooklyn McDavid	105	2	48.3	Ruthy Hebard, Oregon	71.0	Zykera Rice, Gonzaga	50.8
	Ameela Li	138	4	46.1				
	Valerie Higgins	139	5	46.0				
Final Points (200 ranked)	Valerie Higgins	130	4	346	Megan Gustafson, Iowa	585	Yasmine Robinson-Bacote, Pepperdine	407
	Brooklyn McDavid	177	7	324				
Free Throw Attempts (150 ranked)	Valerie Higgins	23	1	131	Kenisha Bell, Minnesota	196	Valerie Higgins, Pacific	131
Free Throws Made (149 ranked)	Valerie Higgins	21	1	104	Lexi Klabo, North Dakota	139	Valerie Higgins, Pacific	104
Free-Throw Percentage (250 ranked)	Ameela Li	62	2	83.6	Rebekah Hand, Marist	96.4	Barbara Sitanggan, Pepperdine	86.1
	Valerie Higgins	126	5	79.4				
Minutes Played (150 ranked)					Lauren Holden, Fordham	926:33	Brenna Chase, BYU	806:14
Minutes Played Per Game (150 ranked)	Ameela Li	146	4	34.15	Lauren Holden, Fordham	38.61	Brenna Chase, BYU	36.65
Offensive Rebounds per Game (30 ranked)					Teaira McCowan, Mississippi St.	6		
Points Per Game (250 ranked)	Valerie Higgins	117	2	16.5	Megan Gustafson, Iowa	26.6	Yasmine Robinson-Bacote, Pepperdine	19.4
	Brooklyn McDavid	169	7	15.4				
	Ameela Li	203	10	14.9				
Rebounds (150 ranked)	Valerie Higgins	68	2	189	Kristine Anigwe, California	328	Bree Alford, Loyola Marymount	229
Rebounds Per Game (250 ranked)	Valerie Higgins	65	2	9.0	Kristine Anigwe, California	15.6	Bree Alford, Loyola Marymount	10.0
Steals (144 ranked)	Valerie Higgins	12	1	70	Chastadie Barrs, Lamar University	120	Valerie Higgins, Pacific	70
	Ameela Li	41	3	52				
Steals Per Game (245 ranked)	Valerie Higgins	11	1	3.33	Chastadie Barrs, Lamar University	6.00	Valerie Higgins, Pacific	3.33
	Ameela Li	36	2	2.60				
Three-Point Field Goals Attempted (149 ranked)					Shania Johnson, Stony Brook	209	Brenna Chase, BYU	171
Three-Point Field Goals Made (137 ranked)					Lauren Loven, Denver	88	Brenna Chase, BYU	55
Three-Point Field Goals Per Game (249 ranked)					Taylor Pierce, Idaho	4.37	Brenna Chase, BYU	2.50
Three-Point Field-Goal Percentage (204 ranked)					Carmen Tellez, Eastern Ill.	50.6	Katie Campbell, Gonzaga	47.5
Triple Doubles (5 ranked)					Sabrina Ionescu, Oregon	6		

CAREER SUMMARIES - (DIVISION I ONLY)

										THREE-POINT			REBOUNDING				* - AT PREVIOUS SCHOOL TOTAL - PACIFIC TOTALS									
Player	Year	GP	GS	Min	Avg	FG	FGA	Pct	FG	FGA	Pct	FT	FTA	Pct	Off	Def	Tot	Avg	PF	FO	Ast	TO	Blk	Stl	Pts	Avg
BLAKESLEE, Jessica	Year	GP	GS	Min	Avg	FG	FGA	Pct	FG	FGA	Pct	FT	FTA	Pct	Off	Def	Tot	Avg	PF	FO	Ast	TO	Blk	Stl	Pts	Avg
	2016-17	23	0	279	12.1	33	82	.402	25	68	.368	1	2	.500	18	20	38	1.7	25	0	9	2	6	13	92	4.0
	2017-18	28	10	530	18.9	44	128	.344	34	90	.378	13	15	.867	38	36	74	2.6	48	0	17	8	6	16	135	4.8
	2018-19	21	21	669	31.9	60	138	.435	31	87	.356	22	27	.815	40	60	100	4.8	54	1	27	15	9	17	173	8.2
	TOTAL	72	31	1478	20.5	137	348	.394	90	245	.367	36	44	.818	96	116	212	2.9	127	1	53	25	21	46	400	5.6
HIGGINS, Valerie	Year	GP	GS	Min	Avg	FG	FGA	Pct	FG	FGA	Pct	FT	FTA	Pct	Off	Def	Tot	Avg	PF	FO	Ast	TO	Blk	Stl	Pts	Avg
	2016-17*	29	15	574	19.8	48	128	.375	13	37	.351	18	35	.514	21	49	70	2.4	48	0	49	59	10	46	127	4.4
	2017-18	-	-	-	-	-	-	-	-	-	-	-	-	-	-	-	-	-	-	-	-	-	-	-	-	-
	2018-19	22	22	644	29.3	125	267	.468	12	48	.250	104	131	.794	57	137	194	8.8	69	4	73	62	25	72	366	16.6
	TOTAL	22	22	644	29.3	125	267	.468	12	48	.250	104	131	.794	57	137	194	8.8	69	4	73	62	25	72	366	16.6
JOHNSON, Cassidy	Year	GP	GS	Min	Avg	FG	FGA	Pct	FG	FGA	Pct	FT	FTA	Pct	Off	Def	Tot	Avg	PF	FO	Ast	TO	Blk	Stl	Pts	Avg
	2018-19	-	-	-	-	-	-	-	-	-	-	-	-	-	-	-	-	-	-	-	-	-	-	-	-	-
	TOTAL	-	-	-	-	-	-	-	-	-	-	-	-	-	-	-	-	-	-	-	-	-	-	-	-	-
LI, Ameela	Year	GP	GS	Min	Avg	FG	FGA	Pct	FG	FGA	Pct	FT	FTA	Pct	Off	Def	Tot	Avg	PF	FO	Ast	TO	Blk	Stl	Pts	Avg
	2015-16	29	6	384	13.2	30	89	.337	7	30	.233	16	27	.593	10	43	53	1.8	39	0	67	52	7	19	83	2.9
	2016-17	31	5	548	17.7	55	157	.350	25	85	.294	42	59	.712	9	43	52	1.7	63	1	85	53	1	40	177	5.7
	2017-18	31	31	1052	33.9	136	312	.436	43	123	.350	60	75	.800	14	72	2.8	2.8	83	2	2.1	66	3	54	375	12.1
	2018-19	21	21	723	34.4	108	241	.448	39	91	.429	53	63	.841	14	53	67	3.2	59	1	102	56	1	52	308	14.9
	TOTAL	112	63	2707	24.2	329	799	.412	114	329	.347	171	224	.763	47	211	258	2.3	244	4	394	227	12	165	943	8.4
LIDY, Chelsea	Year	GP	GS	Min	Avg	FG	FGA	Pct	FG	FGA	Pct	FT	FTA	Pct	Off	Def	Tot	Avg	PF	FO	Ast	TO	Blk	Stl	Pts	Avg
	2015-16	22	0	151	6.9	22	70	.314	0	8	.000	20	29	.690	11	5	16	0.7	22	1	13	16	1	8	64	2.9
	2016-17	31	16	537	17.3	110	239	.460	13	30	.433	69	92	.750	20	33	53	1.7	56	0	21	60	7	14	302	9.7
	2017-18	30	7	387	12.9	91	202	.450	6	25	.240	39	54	.731	27	26	53	1.8	34	0	23	42	1	14	227	7.6
	2018-19	14	0	70	5.0	11	33	.333	0	4	.000	12	14	.857	4	6	10	0.7	7	0	1	8	0	1	34	2.6
	TOTAL	97	23	1145	11.8	234	544	.430	19	67	.284	140	189	.741	62	70	132	1.4	119	1	58	126	9	37	627	6.5
McDAVID, Brooklyn	Year	GP	GS	Min	Avg	FG	FGA	Pct	FG	FGA	Pct	FT	FTA	Pct	Off	Def	Tot	Avg	PF	FO	Ast	TO	Blk	Stl	Pts	Avg
	2017-18	31	24	768	24.8	135	267	.506	0	0	.000	50	59	.678	86	102	188	6.1	83	2	15	27	15	42	310	10.0
	2018-19	22	22	602	27.4	149	302	.493	0	0	.000	46	74	.622	68	69	137	6.2	66	1	9	37	11	25	344	15.6
	TOTAL	53	46	1370	25.8	284	569	.499	0	0	.000	86	133	.647	154	171	325	6.1	149	3	24	64	26	67	654	12.3
MILLARD, Josephine	Year	GP	GS	Min	Avg	FG	FGA	Pct	FG	FGA	Pct	FT	FTA	Pct	Off	Def	Tot	Avg	PF	FO	Ast	TO	Blk	Stl	Pts	Avg
	2018-19	19	0	210	11.1	10	22	.455	0	2	.000	2	6	.333	14	18	32	1.7	22	0	8	9	0	2	22	1.2
	TOTAL	19	0	210	11.1	10	22	.455	0	2	.000	2	6	.333	14	18	32	1.7	22	0	8	9	0	2	22	1.2
NEWMAN, Isabel	Year	GP	GS	Min	Avg	FG	FGA	Pct	FG	FGA	Pct	FT	FTA	Pct	Off	Def	Tot	Avg	PF	FO	Ast	TO	Blk	Stl	Pts	Avg
	2017-18	26	0	248	9.5	18	67	.269	9	41	.220	6	7	.857	8	23	31	1.2	20	0	12	15	1	6	51	2.0
	2018-19	21	15	491	23.4	27	104	.260	18	72	.250	3	6	.500	17	33	50	2.4	39	0	22	24	1	14	75	3.6
	TOTAL	47	15	739	15.7	45	171	.263	27	113	.239	9	13	.692	25	56	81	1.7	59	0	34	39	2	20	126	2.7
PARKER, Isabelle	Year	GP	GS	Min	Avg	FG	FGA	Pct	FG	FGA	Pct	FT	FTA	Pct	Off	Def	Tot	Avg	PF	FO	Ast	TO	Blk	Stl	Pts	Avg
	2017-18	11	0	70	6.4	5	18	.278	0	0	.000	5	14	.357	7	10	17	1.5	12	0	0	6	1	1	15	1.4
	2018-19	14	0	140	10.0	15	53	.283	0	0	.000	15	21	.714	19	23	42	3.0	20	0	5	16	5	6	45	3.2
	TOTAL	25	0	210	8.4	20	71	.282	0	0	.000	18	33	.571	26	33	59	2.4	32	0	5	21	6	7	60	2.4
RANDHAWA, Kaylin	Year	GP	GS	Min	Avg	FG	FGA	Pct	FG	FGA	Pct	FT	FTA	Pct	Off	Def	Tot	Avg	PF	FO	Ast	TO	Blk	Stl	Pts	Avg
	2018-19	21	0	274	13.0	20	79	.253	4	29	.138	23	31	.742	12	19	31	1.5	30	0	16	24	3	8	67	3.2
	TOTAL	21	0	274	13.0	20	79	.253	4	29	.138	23	31	.742	12	19	31	1.5	30	0	16	24	3	8	67	3.2
SUMSION, Savannah	Year	GP	GS	Min	Avg	FG	FGA	Pct	FG	FGA	Pct	FT	FTA	Pct	Off	Def	Tot	Avg	PF	FO	Ast	TO	Blk	Stl	Pts	Avg
	2017-18	31	15	585	18.9	54	132	.409	1	2	.500	18	31	.581	49	66	115	3.7	92	6	24	60	9	24	127	4.1
	2018-19	-	-	-	-	-	-	-	-	-	-	-	-	-	-	-	-	-	-	-	-	-	-	-	-	-
	TOTAL	31	15	585	18.9	54	132	.409	1	2	.500	18	31	.581	49	66	115	3.7	92	6	24	60	9	24	127	4.1
TILLMAN, Lianna	Year	GP	GS	Min	Avg	FG	FGA	Pct	FG	FGA	Pct	FT	FTA	Pct	Off	Def	Tot	Avg	PF	FO	Ast	TO	Blk	Stl	Pts	Avg
	2017-18	9	0	54	6.0	7	23	.304	3	8	.375	0	0	.000	0	3	3	0.3	1	0	14	4	1	5	17	1.9
	2018-19	21	2	408	19.4	56	143	.392	26	67	.388	10	14	.714	2	39	41	2.0	29	0	49	44	7	17	148	7.0
	TOTAL	29	2	462	15.4	63	166	.380	29	74	.387	10	14	.714	2	39	44	1.5	30	0	63	48	8	22	165	5.5
TRYGGEDSSON, Sofie	Year	GP	GS	Min	Avg	FG	FGA	Pct	FG	FGA	Pct	FT	FTA	Pct	Off	Def	Tot	Avg	PF	FO	Ast	TO	Blk	Stl	Pts	Avg
	2018-19	-	-	-	-	-	-	-	-	-	-	-	-	-	-	-	-	-	-	-	-	-	-	-	-	-
	TOTAL	-	-	-	-	-	-	-	-	-	-	-	-	-	-	-	-	-	-	-	-	-	-	-	-	-

2018-19 SEASON & CAREER HIGHS

	2018-19 SEASON		CAREER DIVISION I ONLY	
#00 - Chelsea Lidy				
Points	8	Pepperdine 1/26/19	24	UC Merced 11/15/17
Rebounds	3	Pepperdine 1/26/19	6	at San Jose St 11/18/16; Gonzaga 12/28/17
Assists	1	SJSU 11/29/18	4	at Gonzaga 1/23/16
Steals	1	Pepperdine 1/26/19	3	at Saint Mary's 2/4/17; at LMU 12/30/17
#1 - Brooklyn McDavid				
Points	28	at Santa Clara 1/17/19	28	at Santa Clara 1/17/19
Rebounds	12	at Portland 1/3/19	12	at Portland 1/3/19
Assists	2	Three Times (Last; USD 1/12/19)	2	Fourtimes (Last; USD 1/12/19)
Steals	4	at Fullerton 12/22/18	4	Gonzaga 12/28/17; at Fullerton 12/22/18
#2 - Josephine Millard				
Points	4	Three times (Last; Port 2/2/19)	4	Three times (Last; Port 2/2/19)
Rebounds	7	at Fullerton 12/22/18	7	at Fullerton 12/22/18
Assists	3	at San Diego 2/7/19	3	at San Diego 2/7/19
Steals	1	NDSU 11/23/18, USD 1/12/19	1	NDSU 11/23/18, USD 1/12/19
#3 - Isabel Newman				
Points	11	at Gonzaga 1/5/19	11	at Gonzaga 1/5/19
Rebounds	5	Three times (Last; LMU 1/24/19)	5	Three times (Last; LMU 1/24/19)
Assists	6	at Portland 1/3/19	6	at Portland 1/3/19
Steals	3	at Gonzaga 1/5/19	3	at Gonzaga 1/5/19
#10 - Savannah Sumsion				
Points	-	-	14	UC Merced 11/15/17
Rebounds	-	-	10	at BYU 1/6/18
Assists	-	-	4	at BYU 1/6/18
Steals	-	-	5	Fullerton 11/13/17
#14 - Jessica Blakeslee				
Points	23	at SJSU 11/23/18	23	at SJSU 11/23/18
Rebounds	9	at SJSU 11/23/18	11	Brown 11/25/17
Assists	3	at San Diego 1/7/19	4	UC Merced 11/15/17
Steals	4	at UCF 12/17/18	4	at UCF 12/17/18
#21 - Ameela Li				
Points	27	UC Davis 11/11/18	27	UC Davis 11/11/18
Rebounds	5	Three times (Most Recently, Fullerton)	8	San Jose State 12/12/15
Assists	9	at SJSU 11/23/18	10	UC Merced 11/15/17
Steals	8	San Diego 1/12/19	8	San Diego 1/12/19
#22 - Valerie Higgins				
Points	34	Portland 2/2/19	34	Portland 2/2/19
Rebounds	15	Pepperdine 1/26/18	15	Pepperdine 1/26/18
Assists	6	Three times (Last, at USD 2/7/19)	6	Three times (Last, at USD 2/7/19)
Steals	6	Three times (Most recently, BYU 1/10/19)	6	Three times (Most recently, BYU 1/10/19)
#23 - Lianna Tillman				
Points	16	vs Loyola Marymount 1/24/19	16	vs Loyola Marymount 1/24/19
Rebounds	6	vs Portland 2/2/19	6	vs Portland 2/2/19
Assists	5	vs Portland 2/2/19	10	UC Merced 11/15/17
Steals	4	at Lamar 12/20/18	4	at Lamar 12/20/18
#24 - Kaylin Randhawa				
Points	11	Portland 2/2/19	11	Portland 2/2/19
Rebounds	5	San Diego 1/12/19, Portland 2/2/19	5	San Diego 1/12/19, Portland 2/2/19
Assists	2	Four times (Last; at USD 2/7/19)	2	Four times (Last; at USD 2/7/19)
Steals	2	UCSB 12/8/18	2	UCSB 12/8/18
#33 - Isabelle Parker				
Points	10	Seattle, 12/6/18	10	Seattle, 12/6/18
Rebounds	6	UCSB 12/8/18; at UCF 12/17/18	6	UCSB 12/8/18; at UCF 12/17/18
Assists	1	Six Times (Last, Portland 1/3/19)	1	Six Times (Last, Portland 1/3/19)
Steals	2	Three times; last at USD 2/7/19	3	vs Portland 3/1/18

DOUBLE-DOUBLES

Player	Career	'19	'18	'17	'16	Strk	Long
Valerie Higgins	9	9	-	-	-	2	3
Brooklyn McDavid	7	5	2	-	-	-	2
Savannah Sumsion	1	-	1	-	-	-	1
Ameela Li	1	-	1	-	-	-	1

DOUBLE-DIGIT SCORING GAMES

Player	Career	'19	'18	'17	'16	Strk	Long
Ameela Li	48	17	22	6	3	2	11
Brooklyn McDavid	35	18	18	-	-	1	11
Chelsea Lidy	28	-	8	15	4	-	3
Valerie Higgins	22	20	-	-	-	4	16
Jessica Blakeslee	14	4	3	2	-	-	3
Lianna Tillman	4	4	-	-	-	1	2
Savannah Sumsion	2	-	2	-	-	-	1
Isabelle Parker	1	1	-	-	-	-	1
Isabel Newman	1	1	-	-	-	-	1
Kaylin Randhawa	1	1	-	-	-	1	1

20-POINT GAMES

Player	Career	'19	'18	'17	'16	Strk	Long
Ameela Li	7	5	2	-	-	-	3
Brooklyn McDavid	6	6	-	-	-	1	3
Chelsea Lidy	5	-	2	3	0	-	1
Valerie Higgins	5	5	-	-	-	2	2
Jessica Blakeslee	1	1	-	-	-	-	1

DOUBLE-DIGIT REBOUNDING

Player	Career	'18	'17	'16	'15	Strk	Long
Valerie Higgins	9	9	-	-	-	-	3
Brooklyn McDavid	7	7	-	-	-	-	2
Savannah Sumsion	1	1	-	-	-	-	1

DOUBLE-DIGIT ASSISTS

Player	Career	'18	'17	'16	'15	Strk	Long
Ameela Li	2	2	-	-	-	-	1
Lianna Tillman	1	1	-	-	-	-	1

AT THE LINE, ON THE LINE

Free Throw performances with under 4:00 remaining in regulation (or in overtime) and the score within eight points.

Player	2018-19			Pacific Career		
	FT	FTA	Pct	FT	FTA	Pct
Jessica Blakeslee	6	7	.857	6	7	.857
Ameela Li	18	20	.900	22	30	.733
Chelsea Lidy	-	-	-	5	9	.545
Sav. Sumsion	-	-	-	0	1	.000
Valerie Higgins	6	6	1.000	6	6	1.000
Lianna Tillman	-	-	-	-	-	-
Brooklyn McDavid	7	9	.777	7	9	.777
Isabel Newman	2	4	.500	2	4	.500
Isabelle Parker	-	-	-	-	-	-
TOTAL	39	46	.847	48	65	.738

RECORD AND MILESTONE WATCH

Career Records

Three point FGs made

1. Erica McKenzie (2009-13).....	271
Selena Ho (1998-02).....	271
11. Eden Palacio (1996-00).....	123
12. Ameela Li (2015-18).....	114
13. Jacklyn O'Connor (1991-93).....	97

Three point FGs attempted

1. Erica McKenzie (2009-13).....	784
11. Charmon Logan (1987-91).....	381
12. Ameela Li (2015-18).....	329

Three point FG percentage

1. Selena Ho (1998-02).....	406
8. Connie Blaisure (1992-96).....	365
9. Tine Freil (1989-93).....	355
10. Hallie Eackles (2011-16).....	350
11. Charmon Logan (1987-91).....	349
13. Ameela Li (2015-18).....	347
Madison Parrish (2103-15).....	347
14. Erica McKenzie (2009-13).....	346

Free throw percentage

1. Selena Ho (1998-02).....	823
6. Jane Romberg (1980-85).....	774
7. Ameela Li (2015-18).....	763
8. Amy VanHollebeke (2007-09).....	758
9. Cathy Lauritzen (1994-98).....	746
9. Kendall Rodriguez (2009-13).....	746
11. Kendall Kenyon (2011-15).....	745
12. Millie Kimpton (1998-01).....	743
13. Sheri Bates (1979-83).....	742
14. Chelsea Lidy (2015-18).....	741
15. Hallie Eackles (2011-16).....	736
16. Corinne Wong (2000-04).....	734
17. Madison Parrish (2013-15).....	730
18. Martha Yarbrough (1996-00).....	727

Offensive Rebounds

1. Kendall Kenyon (2011-15).....	402
14. Sarah Yarbrough (1995-99).....	159
15. Brooklyn McDavid (2017-18).....	154
16. Dolinda Meeker (1998-02).....	152
Connie Blaisure (1992-96).....	152
18. Nancy Dinges (2000-04).....	147
19. Janae Young (2007-09).....	145
20. Tine Freil (1989-93).....	141

Assists

1. Tine Freil (1989-93).....	1,088
5. Geeanna Luaulu-Summers (2014-18).....	429
6. Ameela Li (2015-18).....	394
7. Shellie Linden (1982-86).....	385

Steals

1. Tine Freil (1989-93).....	320
5. G. Luaulu-Summers (2014-18).....	170
6. Ameela Li (2015-19).....	165
7. Dolinda Meeker (1998-02).....	164

Games Played

1. Kristina Johnson (2011-15).....	129
16. Sheri Bates (1979-83).....	112
Ameela Li (2015-18).....	112
18. Charmon Logan (1987-91).....	111
Tine Freil (1989-93).....	111
G. Luaulu-Summers (2014-18).....	111

Coaching Wins

1. Melissa Taketa (1988-98).....	140
4. Mark French (1980-83).....	65
5. Bradley Davis (2015-pres.).....	53
6. Julie Sullivan (1984-1988).....	52

Single-Season Records

Scoring Average

1. Kate McAllister (1995-96).....	18.8
9. Kim McDonald (1977-78).....	17.6
10. Jane Romberg (1981-82).....	17.4
10. Natasha Norris (1991-92).....	17.4
12. Janet Whitney (1983-84).....	17.3
13. Charlene Alden (1990-91).....	17.0
14. Valerie Higgins (2018-19).....	16.6
15. Amber Simmons (2008-09).....	16.4
16. Kiki Moore (2013-14).....	16.4
17. Jane Romberg (1980-81).....	15.9
Kendall Kenyon (2013-14).....	15.9
Sonya Monroe (1978-79).....	15.9

Assists Average

1. Tine Freil (1989-90).....	11.1
10. Shellie Linden (1985-86).....	5.0
Corrine Wong (2002-03).....	5.0
11. Michele Sasaki (1986-87).....	4.9
Ameela Li (2018-19).....	4.9
13. Selena Ho (2001-02).....	4.8
Annette Dirac (1992-93).....	4.8
15. Mary Lary (1983-84).....	4.7
16. Paloma Moriana (1994-95).....	4.6
17. Ameela Li (2017-18).....	4.5
18. Shellie Linden (1984-85).....	4.5
19. G. Luaulu-Summers (2016-17).....	4.4
20. Kiki Moore (2013-14).....	4.4

Three-point FG percentage

1. Tine Freil (1990-91).....	500
1. Corinne Wong (2003-04).....	500
3. Selena Ho (1998-99).....	451
4. Sue Will (1994-95).....	442
5. Tylah King (2016-17).....	431
6. Eden Palacio (1996-97).....	430
7. Ameela Li (2018-19).....	429
8. Connie Blaisure (1994-95).....	423
9. Selena Ho (2000-01).....	409
10. Jacklyn O'Connor (1991-92).....	406
11. Nancy Dinges (2001-02).....	405
12. Charmon Logan (1988-89).....	402
13. Selena Ho (2001-02).....	391
Nancy Dinges (2001-02).....	391
15. Erica McKenzie (2012-13).....	390
16. G. Luaulu-Summers (2017-18).....	389
17. Lianna Tillman (2018-19).....	388
18. Jessica Blakeslee (2017-18).....	387
19. Selena Ho (1999-00).....	385
20. Paloma Moriana (1993-94).....	377
Annette Dirac (1992-93).....	377

Free throws made

1. Kiki Moore (2013-14).....	148
7. Paloma Moriana (1994-95).....	120
8. Kendall Kenyon (2013-14).....	111
9. G. LUULU-SUMMERS (2016-17).....	110
10. Gena Johnson (2012-13).....	109
11. Amber Simmons (2008-09).....	108
12. Tine Freil (1992-93).....	107
13. Kendall Rodriguez (2011-12).....	104
Sheri Bates (1982-83).....	104
Valerie Higgins (2018-19).....	104
16. Eden Palacio (1998-99).....	103
17. Selena Ho (1999-00).....	101
Selena Ho (1998-99).....	101
19. Selena Ho (2000-01).....	100
20. Janet Whitney (1984-85).....	99

Free throw percentage

1. Selena Ho (2000-01).....	901
2. Sandy Kline (1983-84).....	865
3. Janet Otto (1985-86).....	864
4. Debbie Geysler (1986-87).....	853
5. Martha Yarbrough (1998-99).....	844
6. Jennifer Fath (2010-11).....	841
Ameela Li (2018-19).....	841
8. Desire Finnie (2014-15).....	829
9. Kelsey Lavender (2005-06).....	828

Steals

1. Sheri Bates (1981-82).....	104
2. Tine Freil (1989-90).....	97
3. Kiki Moore (2013-14).....	86
4. Erica McKenzie (2012-13).....	84
5. Tine Freil (1992-93).....	79
6. Tine Freil (1991-92).....	75
7. Valerie Higgins (2018-19).....	72
8. Mary Lary (1984-85).....	69
Tine Freil (1990-91).....	69
10. G. Luaulu-Summers (2017-18).....	66

Double Doubles

1. Kendall Kenyon (2013-14).....	16
13. Dana Joy (1981-92).....	9
Janet Otto (1984-85).....	9
Karen Peers (1984-85).....	9
Julie Szukalski (1987-90).....	9
Valerie Higgins (2018-19).....	9

Brooklyn McDavid (2018-19)..... 7

Personal Milestones
(min. 500 pts. 300 reb. 300 ast. 100 games)

Ameela Li

1,000 Points scored.....	943
120 games played.....	112
400 assists.....	394
300 rebounds.....	258

Chelsea Lidy

100 games played.....	97
700 points.....	627

Brooklyn McDavid

700 points scored.....	654
400 rebounds.....	325

Jessica Blakeslee

500 points scored.....	400
300 rebounds.....	212

Valerie Higgins

500 points scored.....	366
------------------------	-----

THE LAST TIME...

Individual Points

Single Game	No.	Name	Opponent, Date
Scored 25+	34	Higgins, Valerie	Portland, 2/2/19
Scored 30+	34	Higgins, Valerie	Portland, 2/2/19
Scored 35+	43	Palacio, Eden	at Long Beach St, 02/28/98
Scored 40+	43	Palacio, Eden	at Long Beach St, 02/28/98
Scored 45+	46	McAllister, Kate	Long Beach St, 2/23/96
Scored 50+		Never	

Games Streaks	No.	Name	Opponent, Date
Scored 10+, 5 gms	11	McDavid, Brooklyn	LU 12/20/18 to PEP 1/26/19
Scored 10+, 10 gms	11	McDavid, Brooklyn	LU 12/20/18 to GON 1/31/19
Scored 10+, 12 gms	15	Higgins, Val	UCD 11/11/18 to USD 1/12/19
Scored 10+, 15 gms	15	Higgins, Val	UCD 11/11/18 to USD 1/12/19
Scored 10+, 20 gms	24	Alden, Charlene	Mont St 11/24/90 to LBSU 2/25/91
Scored 10+, 25 gms	26	Szukalski, Julie	SDSU 1/4 to CPP 12/18/88
Scored 10+, 29 gms	29	Whitney, Janet	SF St 11/19/83 to CP 12/7/85
Scored 20+, 2 gms	2	McDavid, Brooklyn	at SCU 1/17/19 to at USF 1/19/19
Scored 20+, 3 gms	3	Moore, Kiki	GONZ, 3/1 to BYU 3/10/14
Scored 20+, 4 gms	4	Ho, Selena	Cal Poly 2/5 to UCSB 2/14/99
Scored 20+, 5 gms	6	McAllister, Kate	TTU 12/17 to CSF 1/4/96

Double-Doubles

Single Game	Name	Opponent, Date
D-D (Pts/Rebs)	Higgins, Valerie (34p, 13r)	Port 2/2/19
D-D (Pts/Assists)	Luauu-Summers, G (14p 10a)	Portland 1/13/18
D-D (Pts/Steals)	Sasaki, Michele (10p 10s)	at Santa Clara; 11/25/88

Games Streak	No.	Name	Date
D-D, 2 gms in row	3	Higgins, Valerie	CSUF; 12/22/18 to Port 1/3/19
D-D, 5 gms in row	5	Kenyon, Kendall	ARZ, 11/23 to FSU, 12/20/13
D-D, 6 gms in row	6	Szukalski, Julie	LBSU 1/13 to HAW 1/25/90

Triple-Doubles

Single Game	Name	Opponent, Date
Only 3 T-D's	Luauu-Summers, G (18p, 10r, 10a)	Cal, 12/10/17
In Pacific History	Luauu-Summers, G (17p, 11r, 11a)	UC Merced, 11/13/16
	Tine Freil (15p, 10r, 11a)	at BYU, 12/19/92

Individual Rebounds

Single Game	No.	Name	Opponent, Date
11+ Rebounds	13	Higgins, Valerie	Port; 2/2/19
15+ Rebounds	15	Higgins, Valerie	Pep; 1/26/19
20-21 Rebounds	21	Kenyon, Kendall	Sacramento St WNIIT, 3/19/15
22-24 Rebounds	24	Kenyon, Kendall	Cal St Stanislaus; 11/08/13
25+ Rebounds	27	Otto, Janet	vs UC Riverside; 12/02/84

Games Streaks	No.	Name	Opponent, Date
10+ Rebs, 2 gms	3	Higgins, Valerie	CSUF; 12/22/18 to Port 1/3/19
10+ Rebs, 5 gms	5	Kenyon, Kendall	ARZ, 11/23 to FSU, 12/20/13
10+ Rebs, 7 gms	7	Kenyon, Kendall	CSN 1/19 to UCSB 2/9/13

Individual Field Goals

Single Game	No.	Name	Opponent, Date
Hit 10	13	Higgins, Valerie	Port 2/2/19
Hit 11	13	Higgins, Valerie	Port 2/2/19
Hit 12/13	13	Higgins, Valerie	Port 2/2/19
Hit 14/15/16	16	Peacon, Danielle	Sacramento State; 11/12/10
Hit 17/18/19	19	McAllister, Kate	Long Beach State; 2/23/96
Hit 20		Never	

Individual Field Goal Percentage

Hit 100% of	Name	Opponent, Date
8 attempts	Tarsiuk, Alissa (8-8)	UC Riverside; 01/30/03
10 attempts	Lidy, Chelsea (10-10)	UC Merced; 11/15/17
14 attempts	Peets, Karen (14-14) (NCAA 1st*)	USF; 02/14/81

* Tied with Kelly Mago, Missouri St (16-16); Karen Walker, Cornell (15-15), 4 other (14-14) for NCAA Record

Individual Three-Pointers Made

Single Game	No.	Name	Opponent, Date
5 made 3PTS	5	Blakeslee, Jessica (5-7)	at SJSU 11/29/18
6 made 3PTS	6	Luauu-Summers, G. (6-8)	at Gonzaga, 2/8/18
7 made 3PTS	8	McKenzie, Erica	at Northridge; 2/14/13
8 made 3PTS	8	McKenzie, Erica	at Northridge; 2/14/13
9 made 3PTS	9	Palacio, Eden	at Long Beach St; 2/28/98

Individual Three-Pointers Attempted

Single Game	No.	Name	Opponent, Date
10 attempts	11	Luauu-Summers, G.	Saint Mary's, 1/20/18
13 attempts	13	Eackles, Hailie	Santa Clara, 2/27/16
14 attempts	17	Eackles, Hailie	UC Davis; 11/29/14
15 attempts	17	Eackles, Hailie	UC Davis; 11/29/14

Individual Free Throws Made

Single Game	No.	Name	Opponent, Date
10 FT Made	12	Higgins, Val	@USF 1/19/19
15 FT Made	15	Luauu-Summers, G.	BYU 1/27/18
19 FT Made	19	Luauu-Summers, G.	Gardner-Webb 11/28/15

Individual Free Throws Attempted

Single Game	No.	Name	Opponent, Date
15 FT Attempts	19	Higgins, Valerie	at USF, 1/19/19
20 FT Attempts	22	Luauu-Summers, GeAnna	at G-Webb, 11/28/15

Individual Free Throws Percentage

Hit 100% of	No.	Name	Opponent, Date
8 FT Attempts	8	Li, Ameela	GON, 12/28/17
12 FT Attempts	16	Luauu-Summers, GeAnna	USF, 1/14/17
15 FT Attempts	16	Luauu-Summers, GeAnna	USF, 1/14/17

Individual Assists

Single Game	No.	Name	Opponent, Date
8 assists	8	Li, Ameela	at SCU, 1/17/19
9 assists	9	Li, Ameela	at SJSU, 11/29/18
10 assists	10	Luauu-Summers, G.	POR; 1/13/18
11 assists	11	Luauu-Summers, G.	UC Merced, 11/13/16
12 assists	12	Johnson, Kristina	at LMU, 1/31/15
13 assists	13	Randall, Christina	American; 12/03/95
14 to 21 assists	21	Freil, Tine	Fresno State; 3/08/92
22 assists	22	Freil, Tine	Wichita St.; 12/14/90

Game Streaks	No.	Name	Opponent, Date
10+ assists	2	Luauu-Summers, G.	UCM 11/13 to SJSU 11/18/16
	8	Freil, Tine	SDSU 2/17 to LBSU 3/10/90

Individual Steals

Single Game	No.	Name	Opponent, Date
7 steals	8	Li, Ameela	San Diego; 1/12/19
8 steals	8	Li, Ameela	San Diego; 1/12/19
10 steals	10	Bates, Sheri	at BYU; 01/12/82
12 steals	12	Bates, Sheri	Hawai'i; 01/05/82

Individual Blocks

Single Game	No.	Name	Opponent, Date
3 blocks	3	Higgins, Valerie	Portland 2/2/19
4 blocks	4	McDavid, Brooklyn	UC Merced; 11/15/17
5+ blocks	6	Kenyon, Kendall	at USF, 12/27/14

Players In Double-Figure Scoring

No of Players	Opponent / Date
Four	Portland 2/2/19
Five	at SU 12/6/18
Six	vs UC Merced, 11/13/16
	GeAnna Luauu-Summers (17), Tylah King (15), Callie Owens (14)
	Chelsea Lidy (14), Emily Simons (13), Eli Lopez Sagerera (10)
Seven	vs UC Merced; 11/15/17
(Ties School Record)	Chelsea Lidy (24), GeAnna Luauu-Summers (17), Brooklyn McDavid (15), Ameela Li (15), Savannah Sumsion (14), Desiree Finnie (13), Jessica Blakeslee (12)

Team Field Goals Made

Single Game	No.	Opponent, Date
30 FGs made	30	of 67 at USF; 1/19/19
35 FGs made	40	of 79 SJSU; 11/24/17
40 FGs made	40	of 79 SJSU; 11/24/17
45 FGs made	54	of 76 UC Merced; 11/15/17

Team Field Goal Percentage

Single Game	No.	Name	Opponent, Date
Shot 45% or better	.460	(29-of-63)	USD 2/7/19
Shot 50% or better	.557	(34-of-61)	POR 1/13/18
Shot 55% or better	.557	(34-of-61)	POR 1/13/18
Shot 60% or better	.711	(54-of-76)	UC Merced; 11/15/17

Team Three-Pointers Made

Single Game	No.	Opponent, Date
0 3PT Made	0	268 games since (0-5) at UC Irvine 2/14/09
10 3PT made	10	Portland, 2/2/219
12 3PT made	14	William Jessup, 12/21/16
13 3PT made	14	William Jessup, 12/21/16
14 3PT made	14	William Jessup, 12/21/16
15 3PT made	15	at Cal State Northridge; 02/14/13

Team Three-Pointers Attempted

Single Game	No.	Opponent, Date
30+	33	at BYU; 1/6/18
School record	38	at Oregon; 03/20/14

Team Free Throws Made

Single Game	No.	Name	Opponent, Date
20 FT Made	21		Portland, 2/2/219
25 FT Made	25		Pepperdine, 2/3/18
30 FT Made	31		San Diego; 01/30/14
32 FT Made	33		at San Jose St.; 02/27/81

Team Free Throws Attempted

Single Game	No.	Name	Opponent, Date
25 FT Attempted	26		Portland, 2/2/219
30 FT Attempted	32		BYU; 1/27/18
35 FT Attempted	41		Utah State; 12/16/14
40 FT Attempted	41		Utah State; 12/16/14
45 FT Attempted	50		UC Irvine; 02/05/04

Team Free Throws Percentage

Single Game	No.	(MINIMUM 10)	Opponent, Date
100%	100.0	(11-of-11)	at Gonzaga; 1/23/16
90% or Higher	90.9	(20-of-22)	at Saint Mary's; 1/20/18

Team Rebounds

Single Game	No.	Name	Opponent, Date
50 Rebounds	50		at Port; 1/3/19
55 Rebounds	56		San Jose State 12/12/15
65 Rebounds	67		at Chico St.; 12/05/80
70 Rebounds	73		vs UC Riverside; 12/02/84
75 Rebounds	87		at North Texas; 01/10/99

Team Assists

Single Game	No.	Name	Opponent, Date
15 Assists	22		at USD; 2/7/19
20 Assists	22		at USD; 2/7/19
25 Assists	37		UC Merced; 11/15/17
30 Assists	37		UC Merced; 11/15/17

Team Steals

Single Game	No.	Name	Opponent, Date
20 steals	20		Cal Maritime, 12/12/14
30 steals	30		at Long Beach State; 01/30/99
31 steals	31		at UC Santa Barbara; 12/20/80

Team Blocks

Single Game	No.	Name	Opponent, Date
5 blocks	5		Portland, 2/2/19
10 blocks	10		Cal Maritime, 12/12/14
15 blocks	17		vs Sonoma St.; 11/30/84

Team Scoring

Single Game	No.	Name	Opponent, Date
Scored 105	106	W, 106-97	SJSU; 11/24/17
Scored 100	106	W, 106-97	SJSU; 11/24/17
Scored 90	91	W, 91-67	at SJSU; 11/29/18
Scored 85	87	W, 87-77	Portland; 2/2/19
Scored 80	83	W, 83-80	UC Davis; 11/11/18
Held Under 70	66	L, 88-65	at Gonzaga 1/5/19
Held Under 60	51	L, 63-51	Gonzaga, 1/31/19
Held Under 50	43	L, 43-53	Long Beach St.; 12/20/14
Held Under 40	39	L, 39-71	vs Rutgers; 11/26/10

Team Scoring Defense

Single Game	No.	Name	Opponent, Date
Held Opp Under 30	23	W, 70-23	Cal Maritime; 12/12/14
Held Opp Under 40	37	W, 55-37	Santa Clara; 2/1/18
Held Opp Under 50	49	W, 87-38	San Diego; 1/12/19
Held Opp Under 60	53	W, 70-53	USD; 2/7/19
Held Opp Under 70	61	L, 63-51	Gonzaga; 1/31/19
Allowed 80	88	L, 88-65	at Gonzaga, 1/5/19
Allowed 90	96	L, 88-99	at Saint Mary's; 1/20/18
Allowed 100	112	L, 53-112	at #4 Connecticut; 11/15/11

Team Misc

Category	No.	Name	Opponent, Date
Played OT	W, 78-74		UCF 12/20/17
Won OT	W, 78-74		UCF 12/20/17
Played 2 OT	L, 88-96	(2 OT) at Loyola Marymount; 2/11/16	
Won 2 OT	W, 93-89	Cal State Northridge; 3/6/10	
Played 3 OT	L, 95-96	at Cal Poly; 1/12/13	

QUICKIE PACIFIC GAME RECORDS

Individual Points

Rk	No.	Name	Opponent; Date
1.	46	McAllister, Kate	Long Beach St.; 02/23/96
2.	43	Palacio, Eden	at Long Beach St.; 02/28/98
3.	39	Norris, Natasha	Fresno St.; 03/08/92
4.	37	Luaulu-Summers, GeAnna	at Gardner-Webb; 11/28/15

Individual Field Goals Made

Rk	No.	Name	Opponent; Date
1.	19	McAllister, Kate	Long Beach St.; 02/23/96
2.	17	Norris, Natasha	Fresno St.; 03/08/92
3.	16	Peacon, Danielle	Sacramento St.; 11/12/10

Individual Field Goal Percentage

Since 1978-89, minimum 10 made

Rk	No.	Name	Opponent; Date
1.	1.000	Peets, Karen (14-14) (NCAA 1st*)	USF; 02/14/81
	1.000	Lidy, Chelsea (10-10)	UC Merced; 11/15/17
2.	.917	Romberg-Geiger, Jane (11-12)	US International; 12/11/80

* Tied with Kelly Mago, Missouri St (16-16); Karen Walker, Cornell (15-15); 4 other (14-14)

Individual Three-Pointers Made

Rk	No.	Name	Opponent; Date
1.	9	Palacio, Eden	at Long Beach St.; 02/28/98
2.	8	McKenzie, Erica	at Cal St. Northridge; 02/14/13
	8	Ho, Selena	at Gonzaga; 11/24/01
4.	7	McKenzie, Erica	Florida; 12/09/11
	7	Tiernan, Gretchen	Cal St. Northridge; 01/02/09

Individual Three-Point Percentage

Minimum 6 made

Rk	No.	Name	Opponent; Date
1.	.875	McKenzie, Erica (7-8)	Florida; 12/09/11
2.	.818	Palacio, Eden (9-11)	at Long Beach St.; 02/28/98
3.	.800	McKenzie, Erica (8-10)	at Cal St Northridge; 02/14/13

Individual Free Throws Made

Rk	No.	Name	Opponent; Date
1.	19	Luaulu-Summers, GeAnna	at Gardner-Webb; 11/28/15
2.	16	Luaulu-Summers, GeAnna	USF; 1/14/17
3.	15	Parrish, Madison	at Loyola Marymount; 2/25/14
	15	Luaulu-Summers, GeAnna	BYU; 1/27/18

Individual Free Throws Percentage

Since 1978-89, minimum 10 made

Rk	No.	Name	Opponent; Date
1.	1.000	Luaulu-Summers, GeAnna (16-16)	USF; 1/14/17
	1.000	VanHollebeke, Amy (12-12)	Eastern Wash; 12/21/07
	1.000	McAllister, Kate (12-12)	at Cal St. Fullerton; 02/29/96
	1.000	Romberg-Geiger, Jane (12-12)	vs Montana; 01/04/85

Individual Rebounds

Rk	No.	Name	Opponent / Date
1.	27	Otto, Janet	vs UC Riverside; 12/02/84
2.	25	Otto, Janet	vs Sonoma St.; 11/30/84
3.	24	Kenyon, Kendall	vs Cal St. Stanislaus; 11/08/13
	24	Romberg-Geiger, Jane	vs Sonoma St.; 11/30/84

Individual Assists

Rk	No.	Name	Opponent; Date
1.	22	Freil, Tine (NCAA 2nd-one shy)	Wichita St.; 12/14/90
2.	21	Freil, Tine (NCAA 5th)	Fresno St.; 03/08/92
3.	16	Freil, Tine	New Mexico St.; 02/20/91
	16	Freil, Tine	vs Eastern Illinois; 11/30/91

Individual Steals

Rk	No.	Name	Opponent; Date
1.	12	Bates, Sheri	Hawaii; 01/05/82
2.	10	Bates, Sheri	at BYU; 01/12/82
3.	8	Bates, Sheri	Saint Mary's; 02/05/80
3.	8	Li, Ameela	San Diego; 1/12/19

Individual Blocks

Rk	No.	Name	Opponent; Date
1.	8	Kenyon, Kendall	Cal St. Northridge; 01/19/13
2.	7	Cox, Leslie	at Cal St. Fullerton; 02/29/96
	7	Rogers, Jordan	Cal St. Fullerton; 01/02/11

Most Players In Double-Figure Scoring

Rk	No.	Name	Opponent / Date
1	7	CSU Bakersfield	12/31/12
	7	UC Merced	11/15/17
2	6	Cal St. Stanislaus	12/28/78
	6	UC Merced	11/13/16

Team Field Goals Made

Rk	No.	Opponent	Date
1.	54	vs UC Merced	11/15/17
2.	45	vs Sonoma St.	11/30/84
3.	43	at CSU Bakersfield	11/22/11

Team Field Goal Percentage

Rk	No.	Opponent	Date
1.	.711	vs UC Merced	11/15/17
2.	.634	at UC Riverside (26-41)	03/01/03
3.	.627	San Francisco (37-59)	02/14/81

Team Three-Pointers Made

Rk	No.	Opponent	Date
1.	15	at Cal St. Northridge	02/14/13
2.	14	at Gonzaga	11/24/01
	14	William Jessup	12/21/16
3.	13	at BYU	1/2/14
	13	at Saint Mary's	12/20/12

Team Three-Point Percentage

Minimum 10 made

Rk	No.	Opponent	Date
1.	.688	Florida (11-16)	12/09/11
2.	.652	at Cal St. Northridge (15-23)	02/14/13
3.	.579	Bradley (11-19)	12/18/99

Team Free Throws Made

Rk	No.	Opponent	Date
1.	33	at San Jose St.	02/27/81
2.	32	at Nevada	02/17/81
3.	31	Three times	

Team Free Throws Attempted

Rk	No.	Opponent	Date
1.	50	UC Irvine	02/05/04
2.	47	at Nevada	02/17/81
	47	at San Jose St.	02/27/81

Team Free Throws Percentage

Since 1978-89, minimum 10 made

Rk	No.	Opponent	Date
1.	1.000	at Santa Clara (16-16)	12/12/06
	1.000	at Cal St. Fullerton (14-14)	02/29/96
	1.000	at Washington (11-11)	03/24/13
	1.000	Southern Utah (11-11)	12/09/00
	1.000	at Gonzaga (11-11)	1/23/16

Team Rebounds

Rk	No.	Opponent	Date
1.	80	vs Sonoma St.	11/30/84
2.	73	vs UC Riverside	12/02/84
3.	67	at Chico St.	12/05/80

Team Rebound Margin

Rk	No.	Opponent	Date
1.	54	vs Sonoma St.	11/30/84

Team Assists

Rk	No.	Opponent	Date
1.	37	UC Merced	11/15/17
2.	34	at CSU Bakersfield	11/22/11
	34	Wichita St.	12/14/90

Team Steals

Rk	No.	Opponent	Date
1.	31	at UC Santa Barbara	12/20/80
2.	30	at Long Beach St.	01/30/99
3.	28	Saint Mary's	02/05/80

Team Blocks

Rk	No.	Opponent	Date
1.	17	vs Sonoma St.	11/30/84
2.	13	Cal St. Northridge	01/19/13
3.	11	at Idaho	01/02/03
	11	Cal St. Fullerton	01/02/11

Team Turnovers Forced

Rk	No.	Opponent	Date
1	40	Cal St. Stanislaus	12/28/78
2	38	Notre Dame de Namur	11/30/13

Team Fewest Turnovers Committed

Rk	No.	Opponent	Date
1	4	BYU	2/14/15
2	6	Utah (WNIT)	3/28/13
2	6	at UC Santa Barbara	2/18/00
2	6	at Nevada	1/23/00

Team Points

Rk	No.	Opponent	Date
1.	123	UC Merced	11/15/17
2.	111	UC Merced	11/13/16
3.	110	vs Sonoma St.	11/30/84
4.	106	SJSU	11/24/17
5.	105	Cal St. Stanislaus	12/28/78

Team Fewest Points Allowed

Rk	No.	Opponent	Date
1	13	Cal St. Stanislaus (112-13)	12/28/78
2.	23	Cal Maritime (70-23)	12/12/14
3.	28	UC Irvine (82-28)	3/4/90

Team Points, Half

Rk	No.	Opponent	Date
1.	63	vs UC Merced	11/15/17
2.	61	at Loyola Marymount (2nd)	2/15/14
3.	60	Notre Dame de Namur (2nd)	11/30/13

Team Fewest Points Allowed, Half

Rk	No.	Opponent	Date
1.	4	Cal St. Stanislaus (1st)	12/28/78
2.	9	Cal St. Stanislaus (2nd)	12/28/78
3.	10	Cal Maritime (1st)	12/12/14
4.	11	Santa Clara (2nd)	2/1/18

Team Margin of Victory

Rk	No.	Opponent	Date
1.	92	Cal St. Stanislaus (105-13)	12/28/78
2.	67	vs Sonoma St. (110-43)	11/30/84
3.	64	vs UC Merced (123-59)	11/15/17

Team Margin of Victory, vs Div. I

Rk	No.	Opponent	Date
1.	54	UC Irvine* (82-28)	3/04/90
2.	53	at Nevada (90-37)	2/17/81
3.	49	Portland* (87-38)	2/18/16

LAST EIGHT GAMES

Pacific vs Loyola Marymount
1/24/19

Pacific at San Francisco
1/19/19

Official Box Score - Game Totals - Final Statistics
Loyola Marymount vs Pacific
1/24/2019 11:00 a.m. at Stockton, CA

#	Player	FG-FGA	3Pt-FGA	FT-FTA	Off	Def	Reb	PF	TP	A	TO	BK	Stk	Min
00	Chasey Simpson	1-10	2-5	3-7	2	2	2	1	20	5	0	1	5	33
11	Andree Volosoo	2-7	1-3	3-4	0	0	0	2	6	4	3	1	0	34
22	Isabelle Monahan	7-15	1-3	3-6	4	2	6	1	17	2	5	0	0	27
21	Jessica Blakelock	2-10	1-3	1-2	5	10	20	3	6	0	2	1	2	37
33	Carla Belvin	1-4	0-2	4-6	0	3	3	0	6	3	1	0	0	31
01	Bianca Volosoo	0-0	0-0	0-0	0	0	0	2	1	0	0	0	0	0
22	Raychel Stanley	2-5	0-0	1-2	1	2	3	2	5	1	2	0	0	15
32	Rhiney Reed	0-0	0-0	0-0	0	0	0	2	0	0	0	0	0	5
44	Jose Duckertman	1-1	0-0	0-0	0	0	0	0	2	0	0	0	0	4
TEAM														
Totals 25-55 5-14 17-29 12 30 48 10 77 15 15 2 3 200														
FG % 1st Half: 53.3% 2nd Half: 52% 3rd Qtr: 31.3% 4th Qtr: 33.3% Game: 55.6%														
3Pt % 1st Half: 33.3% 2nd Half: 28.6% 3rd Qtr: 33.3% 4th Qtr: 33.3% Game: 33.3%														
FT % 1st Half: 50.0% 2nd Half: 57.1% 3rd Qtr: 50.0% 4th Qtr: 50.0% Game: 50.0%														

#	Player	FG-FGA	3Pt-FGA	FT-FTA	Off	Def	Reb	PF	TP	A	TO	BK	Stk	Min
01	Brodwyn McDavid	1-10	0-2	1-2	3	4	7	4	17	0	2	2	2	32
00	Isabel Newman	1-7	0-5	1-1	1	4	5	4	3	1	0	0	0	29
14	Jessica Blakelock	4-10	4-8	2-2	4	5	7	3	14	1	1	1	1	29
21	Annelle Li	3-12	1-1	1-2	1	1	2	3	5	1	2	0	2	38
22	Valerie Higgins	2-7	1-1	1-1	2	1	3	0	4	1	1	0	1	13
02	Chelsea Lidy	0-4	0-1	2-2	0	0	0	0	2	0	0	0	0	7
00	Josephine Millar	0-0	0-0	0-0	0	2	2	1	0	1	0	0	0	15
23	Lizanne Tilman	6-12	4-8	0-0	0	0	0	2	16	3	1	0	0	21
24	Kaylin Ranchohus	1-4	1-2	0-0	0	1	1	0	0	0	0	0	0	4
33	Isabelle Parker	0-1	0-0	0-0	0	1	1	0	0	0	0	0	0	0
TEAM														
Totals 25-74 10-25 7-10 14 25 58 24 87 12 7 3 8 200														
FG % 1st Half: 37.3% 2nd Half: 33.3% 3rd Qtr: 30.0% 4th Qtr: 33.3% Game: 33.3%														
3Pt % 1st Half: 16.7% 2nd Half: 16.7% 3rd Qtr: 0.0% 4th Qtr: 16.7% Game: 16.7%														
FT % 1st Half: 50.0% 2nd Half: 50.0% 3rd Qtr: 50.0% 4th Qtr: 50.0% Game: 50.0%														

Officials: Shelly Nease, Tyler Herring, Ilonka 'Ivy' Sosis
Technical Fouls: Loyola Marymount-None, Pacific-Two
Alex G. Sparoz Center, Stockton, CA Attendance: 4573

Score by Period	1st	2nd	3rd	4th	Total
Loyola Marymount	22	16	14	20	72
Pacific	19	11	0	26	67

Last FG - LMU 4th-02:28 LMU 4th-00:00
Largest lead - LMU by 14 3rd-05:00, PAC by 6 1st-07:07
LMU led for 35:00, PAC led for 22:11. Game was tied for 01:41.

Official Box Score - Game Totals - Final Statistics
Pacific vs San Francisco (War Memorial at Serrano)

#	Player	FG-FGA	3Pt-FGA	FT-FTA	Off	Def	Reb	PF	TP	A	TO	BK	Stk	Min
01	Brodwyn McDavid	0-11	0-0	3-4	0	0	0	3	21	1	2	0	0	30
00	Isabel Newman	1-6	0-2	0-0	1	1	2	1	0	2	1	0	0	36
11	Jessica Blakelock	3-7	3-6	0-0	0	0	0	2	4	1	2	1	2	32
21	Annelle Li	6-11	3-4	0-0	0	2	2	4	15	1	4	0	2	31
22	Valerie Higgins	4-11	1-2	2-10	6	7	13	4	21	1	3	1	4	31
02	Chelsea Lidy	3-7	0-0	1-2	1	2	3	2	7	1	2	0	0	11
00	Josephine Millar	0-0	0-0	0-0	0	1	1	0	0	0	0	0	0	13
23	Lizanne Tilman	4-11	2-6	0-0	0	0	0	1	10	1	1	1	1	17
24	Kaylin Ranchohus	1-1	0-0	0-0	0	0	0	0	0	0	0	0	0	2
TEAM														
Totals 33-67 9-19 7-20 13 10 24 17 65 12 42 0 12 200														
FG % 1st Half: 38.1% 2nd Half: 37.5% 3rd Qtr: 37.5% 4th Qtr: 37.5% Game: 37.5%														
3Pt % 1st Half: 25.0% 2nd Half: 25.0% 3rd Qtr: 25.0% 4th Qtr: 25.0% Game: 25.0%														
FT % 1st Half: 75.0% 2nd Half: 75.0% 3rd Qtr: 75.0% 4th Qtr: 75.0% Game: 75.0%														

#	Player	FG-FGA	3Pt-FGA	FT-FTA	Off	Def	Reb	PF	TP	A	TO	BK	Stk	Min
12	Mica Lindqvist	0-1	0-0	1-2	0	1	1	1	1	1	0	0	0	6
24	Luzie Kocot	0-0	0-0	1-2	5	1	0	0	0	0	1	2	0	22
00	Abey HANHUN	1-2	0-0	0-0	1	1	2	1	1	1	0	0	0	15
04	Marianna KUMARA	1-4	1-4	0-0	0	2	2	2	2	1	1	0	0	15
33	Shannon POWELL	0-11	2-5	0-0	3	6	9	3	20	1	5	0	3	36
02	Kiara AVIRTA	1-5	1-4	1-2	0	0	0	0	0	0	1	0	0	26
01	Maria GALT	0-0	0-0	0-0	0	1	1	0	0	0	0	0	0	4
32	Julia WILSON	7-13	2-4	2-2	2	3	5	0	0	0	1	0	0	25
TEAM														
Totals 9-24 7-18 16-24 13 20 58 9 75 14 29 9 8 200														
FG % 1st Half: 32.1% 2nd Half: 23.3% 3rd Qtr: 20.0% 4th Qtr: 20.0% Game: 25.4%														
3Pt % 1st Half: 25.0% 2nd Half: 25.0% 3rd Qtr: 25.0% 4th Qtr: 25.0% Game: 25.0%														
FT % 1st Half: 50.0% 2nd Half: 50.0% 3rd Qtr: 50.0% 4th Qtr: 50.0% Game: 50.0%														

Officials: Michele Price, Gail Castro, Gordon Tongue
Technical Fouls: University of San Diego-None, San Francisco-None
Alex G. Sparoz Center, Stockton, CA Attendance: 474

Score by Period	1st	2nd	3rd	4th	Total
Pacific	22	19	20	0	61
San Francisco	22	25	19	5	71

Last FG - PAC 4th-01:54 USF 4th-00:00
Largest lead - PAC by 14 1st-01:11, USF by 11 and 17:28
PAC led for 21:00, USF led for 17:00. Game was tied for 01:51.

Pacific at Santa Clara
1/17/19

Pacific vs San Diego
1/12/19

Official Box Score - Game Totals - Final Statistics
Pacific vs Santa Clara
1/17/2019 7:00 a.m. at Santa Clara, CA

#	Player	FG-FGA	3Pt-FGA	FT-FTA	Off	Def	Reb	PF	TP	A	TO	BK	Stk	Min
01	Brodwyn McDavid	12-18	0-0	4-8	3	9	11	2	28	0	1	0	0	33
00	Isabel Newman	1-4	1-4	0-0	0	2	2	3	3	1	2	0	1	25
11	Jessica Blakelock	0-8	3-6	0-0	1	1	2	1	16	1	2	0	0	42
21	Annelle Li	0-4	1-5	1-2	0	1	1	3	10	0	2	0	1	33
22	Valerie Higgins	2-6	0-1	2-4	0	0	0	0	0	0	2	5	0	33
02	Josephine Millar	2-4	0-0	0-0	1	0	1	4	1	0	0	0	0	17
23	Lizanne Tilman	2-5	2-3	0-0	0	0	0	1	8	3	2	0	1	11
24	Kaylin Ranchohus	0-3	0-1	2-2	1	1	2	1	2	1	0	0	0	12
TEAM														
Totals 26-60 7-16 9-18 11 25 30 19 70 24 13 2 8 200														
FG % 1st Half: 53.3% 2nd Half: 49.0% 3rd Qtr: 50.0% 4th Qtr: 48.3% Game: 50.0%														
3Pt % 1st Half: 44.4% 2nd Half: 30.0% 3rd Qtr: 30.0% 4th Qtr: 20.0% Game: 30.0%														
FT % 1st Half: 66.7% 2nd Half: 50.0% 3rd Qtr: 50.0% 4th Qtr: 50.0% Game: 50.0%														

#	Player	FG-FGA	3Pt-FGA	FT-FTA	Off	Def	Reb	PF	TP	A	TO	BK	Stk	Min
12	Jessica Blakelock	0-0	0-2	0-0	1	3	4	2	0	1	0	1	0	22
02	Antony Henry	0-13	3-6	0-0	1	3	4	2	20	1	1	0	0	38
00	Leah Fritchard	0-0	1-2	0-0	1	0	1	0	7	1	4	0	0	17
11	Tim Hay	0-8	0-8	0-0	0	2	2	3	10	2	2	0	0	36
21	Naomi Jimenez	1-1	0-0	0-0	1	0	1	0	2	0	1	0	0	15
04	Dru Talafous	0-0	0-0	0-0	0	0	0	0	0	0	0	0	0	2
20	Leann Moseman	0-1	0-0	1-2	2	3	5	3	1	2	2	0	0	29
23	Hilary Vasilakis	4-13	3-6	4-5	1	4	5	1	15	4	0	1	1	27
25	Emily Vagstad	0-0	0-0	0-0	0	0	0	0	0	0	0	0	0	2
44	Chelsea Helleway	2-7	1-6	0-0	0	6	6	3	5	0	1	3	2	21
TEAM														
Totals 21-69 11-33 17-21 8 23 31 15 70 16 15 4 8 200														
FG % 1st Half: 50.0% 2nd Half: 49.0% 3rd Qtr: 50.0% 4th Qtr: 48.3% Game: 49.0%														
3Pt % 1st Half: 0.0% 2nd Half: 16.7% 3rd Qtr: 0.0% 4th Qtr: 16.7% Game: 16.7%														
FT % 1st Half: 50.0% 2nd Half: 50.0% 3rd Qtr: 50.0% 4th Qtr: 50.0% Game: 50.0%														

Officials: Arlio Ortega, Cheryl Rivers, Elizabeth Bennett
Technical Fouls: Pacific-None, Santa Clara-None
Levey Center, Santa Clara, CA Attendance: 0

Score by Period	1st	2nd	3rd	4th	Total
Pacific	26	16	23	10	75
Santa Clara	10	10	21	13	54

Last FG - PAC 4th-01:16 SCU 4th-02:59
Largest lead - PAC by 14 1st-05:00, SCU None
PAC led for 33:40, SCU led for 00:00. Game was tied for 00:17

Official Box Score - Game Totals - Final Statistics
University of San Diego vs Pacific
1/12/2019 2:03 p.m. at Stockton, CA

#	Player	FG-FGA	3Pt-FGA	FT-FTA	Off	Def	Reb	PF	TP	A	TO	BK	Stk	Min
00	Kiera Coody	3-8	0-0	0-0	4	5	9	1	6	2	5	0	2	32
11	Melissa Peltus	1-11	0-0	3-4	0	3	3	4	5	1	2	0	1	37
21	Raychel Stanley	1-4	1-1	0-0	0	3	3	1	3	2	0	0	0	34
32	Dydney Hunter	4-10	0-0	0-0	2	0	2	4	0	0	4	0	0	34
04	Patrick Drosserain	1-7	0-1	0-2	1	0	1	5	2	1	3	0	0	23
14	Kiera Martinez	2-0	0-0	0-0	2	2	4	1	1	1	3	0	0	12
15	Londra Seaton	1-19	0-0	1-1	6									

**Category Leaders
All Games**

Points	G	Pts	Pts/G
Valerie Higgins	21	346	16.5
Brooklyn McDavid	21	324	15.4
Ameela LI	20	298	14.9

FG Percentage	FG	Att	Pct
Brooklyn McDavid	140	290	.483
Josephine Millard	9	19	.474
Ameela LI	105	228	.461

3-Point Percentage	3FG	Att	Pct
Ameela LI	37	83	.446
Lianna Tillman	26	67	.388
Jessica Blakeslee	31	84	.369

Free Throw Percentage	FG	Att	Pct
Chelsea Lidy	12	14	.857
Ameela LI	51	61	.836
Jessica Blakeslee	21	26	.808

Free Throw Attempts	G	Att	Att/G
Valerie Higgins	21	131	6.2
Brooklyn McDavid	21	70	3.3
Ameela LI	20	61	3.1

Rebounds Average	G	Reb	Avg/G
Valerie Higgins	21	189	9.0
Brooklyn McDavid	21	132	6.3
Jessica Blakeslee	20	96	4.8

Fouls	G	NO.	Per/G
Valerie Higgins	21	67	3.2
Brooklyn McDavid	21	62	3.0

Foulsouts	G	NO.
Valerie Higgins	21	4
Brooklyn McDavid	21	1
Jessica Blakeslee	20	1

Blocked Shots	G	NO.	Blk/G
Valerie Higgins	21	25	1.2
Brooklyn McDavid	21	11	0.5
Jessica Blakeslee	20	9	0.5

Minutes	G	NO.	Min/G
Ameela LI	20	683	34.2
Jessica Blakeslee	20	634	31.7
Valerie Higgins	21	609	29.0

Scoring Average	G	Pts	Avg/G
Valerie Higgins	21	346	16.5
Brooklyn McDavid	21	324	15.4
Ameela LI	20	298	14.9

Field Goal Attempts	G	Att	Att/G
Brooklyn McDavid	21	290	13.8
Valerie Higgins	21	252	12.0
Ameela LI	20	228	11.4

Field Goals Made	G	Made	Made/G
Brooklyn McDavid	21	140	6.7
Valerie Higgins	21	116	5.5
Ameela LI	20	105	5.3

3-Point FG Attempts	G	Att	Att/G
Jessica Blakeslee	20	84	4.2
Ameela LI	20	83	4.2
Lianna Tillman	21	67	3.2

3-Point FG Made	G	Made	Made/G
Ameela LI	20	37	1.9
Jessica Blakeslee	20	31	1.6
Lianna Tillman	21	26	1.2

Rebounds	G	Reb	Reb/G
Valerie Higgins	21	189	9.0
Brooklyn McDavid	21	132	6.3
Jessica Blakeslee	20	96	4.8

Offensive Rebounds	G	NO.	Avg/G
Brooklyn McDavid	21	66	3.1
Valerie Higgins	21	54	2.6
Jessica Blakeslee	20	38	1.9

Defensive Rebounds	G	NO.	Avg/G
Valerie Higgins	21	135	6.4
Brooklyn McDavid	21	66	3.1
Jessica Blakeslee	20	58	2.9

Assists	G	NO.	Ast/G
Ameela LI	20	97	4.9
Valerie Higgins	21	67	3.2
Lianna Tillman	21	49	2.3

Steals	G	NO.	Stl/G
Valerie Higgins	21	70	3.3
Ameela LI	20	52	2.6
Brooklyn McDavid	21	23	1.1

Turnovers	G	NO.	To/G
Valerie Higgins	21	60	2.9
Ameela LI	20	56	2.8
Lianna Tillman	21	44	2.1

**Pacific Combined Team Statistics
All Games**

RECORD:	OVERALL	HOME	AWAY	NEUTRAL
All Games	15-7	8-3	7-4	0-0
Conference	8-4	4-3	4-1	0-0
Non-conference	7-3	4-0	3-3	0-0

## Player	gp-gs	min	avg	Total		3-Point		F-Throw		Rebounds				pf	dq	a	to	blk	stl	pts	avg
				fg-fga	fg%	3fg-fga	3fg%	ft-fga	ft%	off	def	tot	avg								
22 Valerie Higgins	22-22	644	29.3	125-267	.468	12-48	.250	104-131	.794	57	137	194	8.8	69	4	73	62	25	72	366	16.6
01 Brooklyn McDavid	22-22	602	27.4	149-302	.493	0-0	.000	46-74	.622	68	69	137	6.2	66	1	9	37	11	25	344	15.6
21 Ameela LI	21-21	723	34.4	108-241	.448	39-91	.429	53-63	.841	14	53	67	3.2	59	1	102	56	1	52	308	14.7
14 Jessica Blakeslee	21-21	668	31.8	60-138	.435	31-87	.356	22-27	.815	40	60	100	4.8	54	1	27	15	9	17	173	8.2
23 Lianna Tillman	21-2	408	19.4	56-143	.392	26-67	.388	10-14	.714	2	39	41	2.0	29	0	49	44	7	17	148	7.0
04 Tylah King	7-7	172	24.6	8-32	.250	7-27	.259	4-6	.667	3	14	17	2.4	9	0	13	6	0	5	27	3.9
03 Isabel Newman	21-15	490	23.3	27-104	.260	18-72	.250	3-6	.500	17	33	50	2.4	39	0	22	24	1	14	75	3.6
33 Isabelle Parker	14-0	140	10.0	15-53	.283	0-0	.000	15-21	.714	19	23	42	3.0	20	0	5	15	5	6	45	3.2
24 Kaylin Randhawa	21-0	274	13.0	20-79	.253	4-29	.138	23-31	.742	12	19	31	1.5	30	0	16	24	3	8	67	3.2
00 Chelsea Lidy	14-0	70	5.0	11-33	.333	0-4	.000	12-14	.857	4	6	10	0.7	7	0	1	8	0	1	34	2.4
02 Josephine Millard	19-0	210	11.1	10-22	.455	0-2	.000	2-6	.333	14	18	32	1.7	22	0	8	9	0	2	22	1.2
TM TEAM										57	59	116				7					
Pacific	22	4401		589-1414	.417	137-427	.321	294-393	.748	307	530	837	38.0	404	6	325	307	62	219	1609	73.1
Opponents	22	4400		533-1265	.421	130-404	.322	310-430	.721	257	557	814	37.0	371	8	290	385	58	176	1506	68.5

Team Statistics	PAC	OPP
SCORING	1609	1506
Points per game	73.1	68.5
Scoring margin	+4.6	-
FIELD GOALS-ATT	589-1414	533-1265
Field goal pct	.417	.421
3 POINT FG-ATT	137-427	130-404
3-point FG pct	.321	.322
3-pt FG made per game	6.2	5.9
FREE THROW-ATT	294-393	310-430
Free throw pct	.748	.721
F-Throws made per game	13.4	14.1
REBOUNDS	837	814
Rebounds per game	38.0	37.0
Rebounding margin	+1.0	-
ASSISTS	325	290
Assists per game	14.8	13.2
TURNOVERS	307	385
Turnovers per game	14.0	17.5
Turnover margin	+3.5	-
Assist/turnover ratio	1.1	0.8
STEALS	219	176
Steals per game	10.0	8.0
BLOCKS	62	58
Blocks per game	2.8	2.6
Attendance	15299	11838
Home game-Avg/Game	11-1391	11-1076
Neutral site-Avg/game		0-0

Date	Opponent	Score	Att.
11/29/18	at San Jose State	w 91-67	334
11/18/18	at California	L 69-81	502
11/11/18	at UC Davis	w 83-80	734
11/23/18	NORTH DAKOTA STATE	w 75-68	1663
11/24/18	WYOMING	w 70-64	1630
12/06/18	SEATTLE UNIVERSITY	w 75-61	309
12/08/18	UC SANTA BARBARA	w 69-53	418
12/17/18	at UCF	L 57-64	2411
12/20/18	at Lamar University	L 66-82	933
12/22/18	at Cal State Fullerton	w 72-64	192
* 12/31/18	SAINT MARY'S (CA)	w 76-67	483
* 01/03/19	at Portland	w 76-66	274
* 01/05/19	at GONZAGA	L 65-88	5807
* 01/10/19	BRIGHAM YOUNG	L 74-77	515
* 01/12/19	UNIVERSITY OF SAN DIEGO	w 79-47	409
* 01/17/19	at Santa Clara	w 74-70	
* 01/19/19	at San Francisco	w 85-75	274
* 01/24/19	LOYOLA MARYMOUNT	L 67-72	4373
* 01/26/19	PEPPERDINE	w 78-67	2217
* 01/31/19	GONZAGA	L 51-63	551
* 02/02/19	PORTLAND	w 87-77	2731
* 02/07/19	at University of San Diego	w 70-53	377

Score by periods	1st	2nd	3rd	4th	Total
Opponents	351	387	412	356	1506
Pacific	459	386	389	375	1609

**Pacific Combined Team Statistics
Conference**

RECORD:	OVERALL	HOME	AWAY	NEUTRAL
All Games	8-4	4-3	4-1	0-0
Conference	8-4	4-3	4-1	0-0
Non-conference	0-0	0-0	0-0	0-0

## Player	gp-gs	min	Total		3-Point		F-Throw		Rebounds						pts	avg						
			fg-fga	fg%	3fg-fga	3fg%	ft-fa	ft%	off	def	tot	avg	pf	dq			a	to	blk	stl		
01 Brooklyn McDavid	12-12	338	28.2	87-168	.518	0-0	.000	28-47	.596	42	49	91	7.6	33	1	6	16	6	11	202	16.8	
22 Valerie Higgins	12-12	357	29.8	68-143	.476	9-32	.281	50-66	.758	36	79	115	9.6	35	1	43	30	18	41	195	16.3	
21 Ameela LI	12-12	415	34.6	61-137	.445	24-59	.407	28-32	.875	6	23	29	2.4	33	0	63	32	1	31	174	14.5	
23 Lianna Tillman	11-0	196	17.8	31-82	.378	15-41	.366	4-6	.667	1	17	18	1.6	11	0	29	21	2	8	81	7.4	
14 Jessica Blakeslee	12-12	356	29.7	27-73	.370	16-46	.348	14-17	.824	18	35	53	4.4	36	1	18	11	7	8	84	7.0	
03 Isabel Newman	12-12	321	26.8	17-66	.258	14-50	.280	3-6	.500	10	16	26	2.2	27	0	15	14	1	11	51	4.3	
24 Kaylin Randhawa	11-0	157	14.3	12-43	.279	3-15	.200	14-19	.737	8	14	22	2.0	18	0	9	9	3	4	41	3.7	
00 Chelsea Lidy	8-0	46	5.8	7-22	.318	0-1	.000	8-10	.800	3	3	6	0.8	5	0	0	6	0	1	22	2.8	
33 Isabelle Parker	7-0	48	6.9	7-16	.438	0-0	.000	2-2	1.000	2	9	11	1.6	3	0	2	5	1	3	16	2.3	
02 Josephine Millard	12-0	166	13.8	7-16	.438	0-1	.000	2-4	.500	7	13	20	1.7	17	0	8	8	0	1	16	1.3	
TM TEAM																						
Pacific	12	2400		324-766	.423	81-245	.331	153-209	.732	162	292	454	37.8	218	3	193	158	39	119	882	73.5	
Opponents	12	2400		293-704	.416	64-205	.312	172-236	.729	153	302	455	37.9	211	6	154	196	30	93	822	68.5	

Team Statistics	PAC	OPP
SCORING	882	822
Points per game	73.5	68.5
Scoring margin	+5.0	-
FIELD GOALS-ATT	324-766	293-704
Field goal pct	.423	.416
3 POINT FG-ATT	81-245	64-205
3-point FG pct	.331	.312
3-pt FG made per game	6.8	5.3
FREE THROW-ATT	153-209	172-236
Free throw pct	.732	.729
F-Throws made per game	12.8	14.3
REBOUNDS	454	455
Rebounds per game	37.8	37.9
Rebounding margin	-0.1	-
ASSISTS	193	154
Assists per game	16.1	12.8
TURNOVERS	158	196
Turnovers per game	13.2	16.3
Turnover margin	+3.2	-
Assist/turnover ratio	1.2	0.8
STEALS	119	93
Steals per game	9.9	7.8
BLOCKS	39	30
Blocks per game	3.3	2.5
Attendance	11279	6732
Home game-Avg/Game	7-1611	5-1346
Neutral site-Avg/game		0-0

Date	Opponent	Score	Att.
* 12/31/18	SAINT MARY'S (CA)	W 76-67	483
* 01/03/19	at Portland	W 76-66	274
* 01/05/19	at GONZAGA	L 65-88	5807
* 01/10/19	BRIGHAM YOUNG	L 74-77	515
* 01/12/19	UNIVERSITY OF SAN DIEGO	W 79-47	409
* 01/17/19	at Santa Clara	W 74-70	
* 01/19/19	at San Francisco	W 85-75	274
* 01/24/19	LOYOLA MARYMOUNT	L 67-72	4373
* 01/26/19	PEPPERDINE	W 78-67	2217
* 01/31/19	GONZAGA	L 51-63	551
* 02/02/19	PORTLAND	W 87-77	2731
* 02/07/19	at University of San Diego	W 70-53	377

* Conference game

Score by periods	1st	2nd	3rd	4th	Total
Opponents	214	222	211	175	822
Pacific	256	224	207	195	882