



2016-17 SAINT MARY'S WOMEN'S BASKETBALL

11 Postseason Appearances ('99, '00, '01, '02, '10, '11, '12, '13, '14, '15, '16) | 3-Time WCC Champion

JAN. 5 at PROVO, UTAH | MARRIOTT CENTER



BYU COUGARS

Record: 7-6 (1-1 WCC)
Home: 2-2
Ranking: NR
Coach: Jeff Judkins (16th Season)
At BYU: 338-156
Career Record: Same



SAINT MARY'S GAELS

Record: 6-7 (1-1 WCC)
Road: 4-3
Ranking: NR
Coach: Paul Thomas (11th Season)
At SMC: 201-131
Career Record: 437-289 (25th Season)

GAMEDAY COVERAGE



SAINT MARY'S SNIPPETS

Last-Second Shot Eeks San Diego Past Gaels

Sydney Raggio hit a game-tying 3-pointer from the right wing with six seconds left on the clock Saturday, but San Diego's Cori Woodward dribbled the ball coast to coast and sank an 18-foot jumper as time expired, beating the buzzer and sending the Toreros to a 73-71 win at Jenny Craig Pavilion. It was the second buzzer-beater to down the Gaels this year after UC Davis did it on Dec. 11.

Continued Success In WCC Openers

Thursday's 74-59 win over LMU was Saint Mary's sixth straight WCC opening win. Coincidentally, it was a streak that started exactly five years ago with a win at LMU on Dec. 29, 2011.

Searching For A Leader? Find One In Raggio

When *Sydney Raggio* leads the Gaels statistically this season, they do well. SMC is 5-0 when the sophomore leads in rebounds, 2-0 when she's the leading scorer and 1-0 with her as assists leader.

Improving The Handle

Saint Mary's has improved its ball handling over the last three games. The Gaels have gone three straight games with fewer turnovers than their opponent after only having two such games in their previous 10. Oddly, SMC is only 1-4 this season when holding onto the ball better than its opponent.

Missing McDonald

Fifth-year senior point guard *Samira McDonald* has yet to play in a game this season for the Gaels. McDonald started 28 of 29 games in '15-'16 before missing the final three due to injury. She owns a career assists-to-turnovers ratio of 1.35 and had 96 assists last year. In her absence the Gaels have had seven games of 20 or more turnovers and carry a team ratio of 0.84 (seventh in WCC).

PROBABLE STARTERS



#4 - Devyn Galland
G • 5-8 • R-Sr.
 PPG: 8.6 RPG: 2.0
 FT %: 85.2%



#10 Carly Turner
G • 6-0 • Jr.
 PPG: 9.6 RPG: 5.6
 Blocks: 12



#12 Sydney Raggio
F • 6-1 • So.
 PPG: 11.6 RPG: 7.5
 Steals: 7



#21 Stella Beck
G • 6-0 • Jr.
 PPG: 13.8 RPG: 5.4
 APG: 3.7



#25 Megan McKay
F • 6-3 • So.
 PPG: 11.1 RPG: 7.6
 FG %: 59.8%

2016-17 Schedule (6-7, 0-0 WCC)

	California Nov. 11	McKeon Pavilion L, 67-74
	Washington State Nov. 13	Pullman, Wash. L, 69-85
	Northeastern Nov. 18	Boston W, 77-53
	Boston College Nov. 20	Chestnut Hill, Mass. W, 62-54
Hilton Concord Classic		
	Boise State Nov. 25	McKeon Pavilion L, 78-83
	Utah Nov. 26	McKeon Pavilion L, 62-63
	Cal Poly Dec. 1	San Luis Obispo, Calif. W, 79-71
	San Jose State Dec. 3	San Jose, Calif. W, 85-64
	UC Davis Dec. 11	Davis, Calif. L, 66-68
	Northern Colorado Dec. 16	McKeon Pavilion W, 75-65
	CSUN Dec. 19	McKeon Pavilion L, 61-73
	*Loyola Marymount Dec. 29	McKeon Pavilion W, 74-59
	*San Diego Dec. 31	San Diego L, 71-73
	*BYU Jan. 5	Provo, Utah 6 p.m.
	*San Francisco Jan. 7	McKeon Pavilion 1 p.m.
	*Portland Jan. 12	McKeon Pavilion 6:30 p.m.
	*Gonzaga Jan. 14	McKeon Pavilion 1 p.m.
	*Pacific Jan. 19	Stockton, Calif. 7 p.m.
	*Pepperdine Jan. 21	Malibu, Calif. 1 p.m.
	*San Francisco Jan. 26	San Francisco 7 p.m.
	*Santa Clara Jan. 28	McKeon Pavilion 1 p.m.
	*Pacific Feb. 2	McKeon Pavilion 6:30 p.m.
	*San Diego Feb. 4	McKeon Pavilion 1 p.m.
	*Portland Feb. 9	Portland, Ore. 7 p.m.
	*Gonzaga Feb. 11	Spokane, Wash. TBA
	*Loyola Marymount Feb. 16	Los Angeles Noon
	*BYU Feb. 18	McKeon Pavilion 1 p.m.
	*Pepperdine Feb. 23	McKeon Pavilion 6:30 p.m.
	*Santa Clara Feb. 25	Santa Clara, Calif. 2 p.m.
WCC Championship Tournament		
	First Round March 2	Las Vegas TBA
	Quarterfinals March 3	Las Vegas TBA
	Semifinals March 6	Las Vegas TBA
	Championship March 7	Las Vegas TBA

Contact: Mark Rivera | mtr6@stmarys-ca.edu | O: (925) 631-4950 | C: (415) 914-5509

* WCC game; Bold - Home Game



Alphabetical Roster

No.	Name	Pos.	Ht.	Yr.	Hometown/Previous School
30	Joy Akaegbu-Cleveland	F	6-2	Fr.	Spokane, Wash./Gonzaga Prep
21	Stella Beck	G	6-0	Jr.	Wellington, New Zealand/Hutt Valley
22	Devon Brookshire	F	6-2	R-Sr.	Rancho Palos Verdes, Calif./Northwestern
33	Claire Ferguson	C	6-3	So.	Olathe, Kan./TCU
3	Jasmine Forcadilla	G	5-8	R-Fr.	Terrigal, NSW, Australia/St. Joseph's Cath.
4	Devyn Galland	G	5-8	R-Sr.	Spokane, Wash./Oregon
5	Jordan Hobson	F	5-10	Fr.	Richmond, Calif./Salesian
11	Morgan Malloy	G	5-3	Fr.	Napa, Calif./Justin-Siena
14	Shannon Mauldin	G	5-9	R-Sr.	Emeryville, Calif./Saint Mary's College HS
24	Samira McDonald	G	5-9	R-Sr.	Lacey, Wash./River Ridge
25	Megan McKay	F	6-3	So.	Katanning, Australia/St. Mary's Anglican
13	Tyra Moe	F	6-1	Fr.	Honolulu/Punahou
12	Sydney Raggio	F	6-1	So.	San Bruno, Calif./St. Ignatius
20	Katie Rathbun	G	6-0	So.	Concord, Calif./Carondelet
10	Carly Turner	G	6-0	Jr.	Eltham, Victoria, Australia/Australian Inst. of Sport

Numerical Roster

No.	Name	Pos.	Ht.	Yr.	Hometown/Previous School
3	Jasmine Forcadilla	G	5-8	R-Fr.	Terrigal, NSW, Australia/St. Joseph's Cath.
4	Devyn Galland	G	5-8	R-Sr.	Spokane, Wash./Oregon
5	Jordan Hobson	F	5-10	Fr.	Richmond, Calif./Salesian
10	Carly Turner	G	6-0	Jr.	Eltham, Victoria, Australia/Australian Inst. of Sport
11	Morgan Malloy	G	5-3	Fr.	Napa, Calif./Justin-Siena
12	Sydney Raggio	F	6-1	So.	San Bruno, Calif./St. Ignatius
13	Tyra Moe	F	6-1	Fr.	Honolulu/Punahou
14	Shannon Mauldin	G	5-9	R-Sr.	Emeryville, Calif./Saint Mary's College HS
20	Katie Rathbun	G	6-0	So.	Concord, Calif./Carondelet
21	Stella Beck	G	6-0	Jr.	Wellington, New Zealand/Hutt Valley
22	Devon Brookshire	F	6-2	R-Sr.	Rancho Palos Verdes, Calif./Northwestern
24	Samira McDonald	G	5-9	R-Sr.	Lacey, Wash./River Ridge
25	Megan McKay	F	6-3	So.	Katanning, Australia/St. Mary's Anglican
30	Joy Akaegbu-Cleveland	F	6-2	Fr.	Spokane, Wash./Gonzaga Prep
33	Claire Ferguson	C	6-3	So.	Olathe, Kan./TCU

Pronunciation Guide

Jasmine FORCADILLA	Fork-uh-DEE-uh	Devyn GALLAND	GAL-und
Shannon MAULDIN	Mall-den	MEGAN McKay	MEE-gun Muh-KAY
Tyra MOE	MOY (like "Toy")	Sydney RAGGIO	RAW-jee-oh
Joy AKAEGBU-CLEVELAND	Uh-KEG-boo	Cleveland (like the city)	

Coaches

Lisa O'MEARA	Oh-MARE-uh	Allyson FASNACHT	Faz-nact
--------------	------------	------------------	----------

Roster Breakdown

Letterwinners Returning (8):

Stella Beck (G), Devon Brookshire (F), Devyn Galland (G), Samira McDonald (G), Megan McKay (F), Carly Turner (G), Sydney Raggio (F), Katie Rathbun (G).

Letterwinners Lost (3):

Lisa Janko (G), Hannah Kaser (F), Lauren Nicholson (G)

Other Returnees (2):

Jasmine Forcadilla (G), Shannon Mauldin (G).

Newcomers (5):

Joy Akaegbu-Cleveland (F), Claire Ferguson (C), Jordan Hobson (F), Morgan Malloy (G), Tyra Moe (G).

Class Breakdown:

Freshmen (5), Sophomores (4), Juniors (2), Seniors (4)

State Breakdown:

California (6), Washington (3), Hawaii (1), Kansas (1)

International Breakdown:

Australia (3), New Zealand (1)

Quick Facts

Founded 1863
 Enrollment..... 4,000 (2,750 undergrad)
 Affiliation NCAA Division I
 Conference West Coast
 Nickname..... Gaels
 Colors..... Navy, Red, and Silver
 President James Donahue
 Director of Athletics Mark Orr

Head Coach (Year) Paul Thomas (11th)
 Alma Mater..... Wayne State College, 1986
 Record at SMC..... 201-131 overall, 104-54 WCC
 All-Time Record (Year) 437-289 (25th)
 Office Phone (925) 631-4712

Home Facility (Opened)..... McKeon Pavilion (1978)
 Capacity 3,500
 All-Time Record 356-167 (.681)

All-time Record 662-454 (1978-present)
 All-Time WCC Win-Loss Record 258-163
 Best Record All-Time 26-6 (2000-01)
 WCC Regular Season Titles (Last) 3 (2001)
 Best WCC Finish (Last) 1st (2001)
 NCAA Appearances (Last) 2 (2001)
 WNIT Appearances (Last) 9 (2016)

2015 Record (WCC) 24-8 (14-4)
 2015 WCC Finish 2nd
 2015 Postseason..... WNIT 1st Round

Letterwinners Returning/Lost..... 7/3
 Starters Returning/Lost 4/1
 Newcomers (incl. redshirt freshmen) 6
 Class Breakdown (Fr./So./Jr./Sr.)..... 5/4/2/4

Key Returners

F Sydney Raggio, So.
 11.6 ppg, 7.1 rpg, 2.1 apg, 47.1 FG %, 28 blocks
 2015-16 WCC All-Freshmen Team
 F Devon Brookshire, R-Sr.
 11.0 ppg, 6.1 rpg, 42.5 FG %, 77.5 FT %
 All-WCC Honorable Mention
 G Stella Beck, Jr.
 9.9 ppg, 5.8 rpg, 2.8 apg, 1.04 spg
 '14-'15 WCC Newcomer OTY, All-WCC 2nd Team
 G Devyn Galland, R-Sr.
 7.6 ppg, 3.0 rpg, 1.5 apg, 44.6 3-pt FG %
 G Samira McDonald, R-Sr.
 3.3 apg, 28 steals, 2.5 rpg, 38.1 3-pt FG %

Key Losses

G Lauren Nicholson (Graduated)
 7.6 ppg, 3.0 rpg, 1.5 apg, 44.6 3-pt FG %
 Two-time All-WCC 1st Team ('14-'15 & '15-'16)



2016-17 SAINT MARY'S COLLEGE WOMEN'S BASKETBALL



Jasmine Forcadilla
Guard • 5-8
Freshman
Terrigal, Australia
St. Joseph's Catholic



Devyn Galland
Guard • 5-8
Redshirt Senior
Spokane, Wash.
Oregon



Jordan Hobson
Forward • 5-10
Freshman
Richmond, Calif.
Salesian HS



Carly Turner
Guard • 6-0
Junior
Eltham, Australia
Australia Inst. of Sport



Morgan Malloy
Guard • 5-3
Freshman
Napa, Calif.
Justin-Siena HS



Sydney Raggio
Forward • 6-1
Sophomore
San Bruno, Calif.
St. Ignatius HS



Tyra Moe
Guard • 6-1
Freshman
Honolulu
Punahou



Shannon Mauldin
Guard • 5-9
Redshirt Senior
Emeryville, Calif.
St. Mary's College HS



Katie Rathbun
Guard • 6-0
Sophomore
Concord, Calif.
Carondelet HS



Stella Beck
Guard • 6-0
Junior
Wellington, N. Zealand
Hutt Valley HS



Devon Brookshire
Forward • 6-2
Redshirt Senior
R. Palos Verdes, Calif.
Northwestern



Samira McDonald
Guard • 5-9
Redshirt Senior
Lacey, Wash.
River Ridge HS



Megan McKay
Forward • 6-3
Sophomore
Katanning, Australia
St. Mary's Angelican



Joy Akaegbu-Cleveland
Forward • 6-2
Freshman
Spokane, Wash.
Gonzaga Prep



Claire Ferguson
Center • 6-3
Sophomore
Olathe, Kan.
TCU



Paul Thomas
Head Coach
11th Season
Wayne State College, '86



Tracy Sanders
Associate Head Coach
11th Season
Saint Mary's (CA), '00



Allyson Fasnacht
Assistant Coach
6th Season
Liberty, '07



Lisa O'Meara
Assistant Coach
4th Season
Oregon Tech, '10





SCOUTING REPORT

STATISTICAL COMPARISON

Saint Mary's Record When...

Overall	6-7
WCC.....	1-1
Non-Conference	5-6
Home	2-4
Away	4-3
Neutral.....	0-0
Overtime games	0-0
Games decided by 5 or less	0-4
Games decided by 6-10 pts	3-1
Games decided by 11+ pts	3-2
Leading with 5:00 to play	6-0
Trailing with 5:00 to play	0-7
Tied with 5:00 to play	0-0
Leading with 1:00 to play	6-0
Trailing with 1:00 to play	0-6
Tied with 1:00 to play	0-1
Games after a win	2-4
Games after a loss	4-2
Leading at halftime	6-2
Trailing at halftime	0-5
Tied at halftime	0-0
Leading in rebounds	6-5
Trailing in rebounds	0-1
Tied in rebounds	0-1
Fewer No. of turnovers.....	1-4
More turnovers than opponent.....	5-3
Equal number of turnovers.....	0-0
Shoot higher % than opponent	6-1
Shoot lower % than opponent.....	0-6
Shoot equal % as opponent.....	0-0
Shooting 60% or above.....	1-0
Shooting 50-59%	2-0
Shooting 40-49%	3-5
Shooting 30-39%	0-2
Shooting below 30%	0-0
Holding opponents below 30%.....	0-0
Holding opponents below 40%.....	6-2
Holding opponents below 50%.....	0-5
Holding opponents below 60%.....	0-0
Opponent hitting 60% or better	0-0
When scoring less than 50.....	0-0
When scoring 50-59 points.....	0-0
When scoring 60-69 points.....	1-5
When scoring 70-79 points.....	4-2
When scoring 80+ points.....	1-0
When allowing less than 50.....	0-0
When allowing 50-59 points.....	3-0
When allowing 60-69 points.....	2-2
When allowing 70-79 points.....	1-3
When allowing 80+ points.....	0-2

The Cougars (7-6, 1-1 WCC) were just one first-place vote and one total point behind Gonzaga for the top spot in this season's WCC preseason poll. But that didn't matter Thursday when the Cougars fell 64-63 at Santa Clara. BYU recovered Saturday and beat LMU at home. The Cougars have lost three of their last five but have won two of their last three at home – the lone loss coming versus then-No. 9 Washington.

The Cougars have used the same starting lineup all year. Cassie Broadhead leads the team with 17.1 points per game. Kalani Purcell is just shy of averaging a double-double with 12.1 points and 9.2 rebounds per contest. BYU has been outrebounded this season 39.1 to 35.8. The Cougars' 62.8 points allowed and 37.7 percent opponents FG percentage are second-best in the WCC.

Never Bored On The Boards

Saint Mary's has been as active as can be when it comes to rebounding this season. SMC has outrebounded (or tied) its opponent in 12 of 13 games. The Gaels are 16th in the NCAA in rebounding margin (+10.4) and among the top-105 in both total rebounds (548) and rebounds per game (42.2).

Doing Well With The Strengths...

Saint Mary's has consistently been among the WCC's best this year in a number of categories. The Gaels are the best rebounding team in the conference (42.2 rpg, +15.8 rebounding margin) and the best shooting team (45.6 percent). They also share the ball well at 15.8 assists per game (3rd in WCC).

Need To Work On The Weaknesses...

The Gaels' struggles this year have also been consistent. Saint Mary's ranks at the bottom of the WCC in turnovers per game (18.9) and turnover margin (-4.38). Its 0.84 assists-to-turnovers ratio is seventh in the WCC. The Gaels also rank third-to-last (8th) in free-throw percentage at 67.9 percent.

Mauldin Not Undone In The Clutch

Shannon Mauldin was not fazed by the pressure at the free-throw line Saturday at San Diego. The fifth-year senior put down four straight free throws in the final 46 seconds to keep Saint Mary's close. She also made one from the charity stripe at the 3:47 mark. For the season, Mauldin is 6 for 7 shooting free throws with less than 5 minutes to play, including a perfect 4 for 4 with less than two minutes on the clock.

Paul Thomas Earns 200th SMC Win

With a 75-65 victory over Northern Colorado on Dec. 16, head coach Paul Thomas earned his 200th win at the helm of the Saint Mary's women's basketball program. Thomas began his tenure with the Gaels in the 2006-07 season. Now in his 11th year with Saint Mary's, Thomas' teams have made seven straight postseason appearances, posted six 20-win seasons, and boasted 14 all-WCC awards.

SMC	STAT	BYU
71.2	PPG	64.8
68.1	Opp. PPG	62.8
45.6	FG %	41.5
39.7	Opp. FG %	37.7
33.7	3-pt %	32.6
30.4	Opp. 3-pt %	31.3
67.9	FT %	69.1
42.2	RPG	35.8
15.8	APG	14.5
6.2	SPG	8.5
3.3	BPG	3.9

Know Thy Neighbors

Since 2014-15, SMC has had its most success against California opponents. The Gaels are 35-12 versus schools from the Golden State, including 18-6 on the road.

McKay Goes For Double Double-Doubles

Megan McKay logged back-to-back double-doubles during the Thanksgiving weekend's Hilton Concord Classic, earning All-Tournament honors. She scored a career-high 26 points and tied a career high with 12 rebounds in the opener. The next day she scored 15 and pulled down 10.

Plenty of Experience Returning

On top of returning four of five starters from a year ago, the 2016-17 Saint Mary's roster features five players with a redshirt year under their belt. Redshirt freshman *Jasmine Forcadilla*, and redshirt seniors *Devon Brookshire*, *Devyn Galland*, *Shannon Mauldin* and *Samira McDonald* all have extra training time in their careers.

Saint Mary's Chosen Third In Preseason WCC Poll

After finishing second a year ago with its fifth straight 20-win season, Saint Mary's was selected third in the 2016-17 West Coast Conference Preseason Poll with one first-place vote, and *Stella Beck* was named to the All-WCC Preseason Team.

Saint Mary's earned 66 points in the poll, just nine points behind 2015-16 regular season champion BYU (75 points, four first-place votes). Gonzaga was narrowly chosen as the conference favorite, earning 76 points with five first-place votes.

2016-17 WCC Preseason Poll

1. Gonzaga (5)	76	6. Loyola Marymount	36
2. BYU (4)	75	7. San Francisco	35
3. Saint Mary's (1)	66	8. Pacific	34
4. San Diego	58	t-9. Pepperdine	13
5. Santa Clara	44	t-9. Portland	13

() - First-place votes



Season Facts

Largest Lead:
29 (77-48, 2:36 4th) – at Northeastern, 11/18

Largest WCC Lead:
23 (62-39, 00:39 3rd) – vs. LMU, 12/29

Largest Deficit:
17 (67-84, 3:44 4th) – at Washington St., 11/13

Largest WCC Deficit
7 (10-17, 2:00 1st) – at San Diego, 12/31

Largest Lead in Win:
29 (77-48, 2:36 4th) – at Northeastern, 11/18

Largest Lead in WCC Win:
23 (62-39, 00:39 3rd) – vs. LMU, 12/29

Largest Deficit in Loss:
17 (67-84, 3:44 4th) – at Washington St., 11/13

Largest Deficit in WCC Loss:
7 (10-17, 2:00 1st) – at San Diego, 12/31

Largest Halftime Lead:
16 (52-36) – at San Jose State, 12/3

Largest WCC Halftime Lead:
11 (42-31) – vs. LMU, 12/29

Largest Halftime Deficit:
8 (27-35) – vs. California, 11/11

Largest WCC Halftime Deficit:
-

Largest Deficit Overcome in Win:
6 (0-6, 8:13 1st) – at Cal Poly, 12/1

Largest Deficit Overcome in WCC Win:
-

SAINT MARY'S BY THE NUMBERS



Field Goal %
45.6%

Undefeated (3-0) when shooting 50% or better



Rebounding
42.2 rpg

Top rebounding team in the WCC



Assists-Turnovers
0.8

3 straight games with less turnovers than opponent

Another Banner Year In 2015-16

Saint Mary's is coming off one of its best seasons in program history in 2015-16. The Gaels won 24 games – second-most ever – and set a new program scoring record with 2,388 points. The Gaels finished second in the WCC and earned nine top-100 wins over the likes of nationally ranked Cal, Villanova and Washington State. The Gaels returned to the postseason for the seventh straight time in 2015-16 and won 20 games for the fifth straight year, and sixth in the last seven.

Saint Mary's Standard For Success

Saint Mary's has won 20 or more games for five straight seasons and six in the last seven. The Gaels have also made trips to the postseason in seven straight seasons. Saint Mary's has had multiple players named to WCC All-Conference teams for seven straight years and has had a player on the WCC All-Freshmen Team in five of seven years.

Gaels Sign Two Local Players To NLI's

Two elite, decorated local players with all-around talent will continue their basketball careers as Gaels next season, as Saint Mary's announced on Nov. 10 the signing of *Emily Codding* from Santa Rosa and *Madeline Holland* from San Jose.

Both Codding and Holland have excelled for three varsity seasons on premiere Bay Area girls high school basketball teams. The 6-foot Codding is a two-time first team all-North Bay League player and has led her Santa Rosa High School team to the postseason on two occasions. The 5-foot, 11-inch Holland helped lead her Archbishop Mitty High School team to a state championship in 2014-15 and last year earned numerous Player of the Year awards from the West Catholic Athletic League and local media.

Nicholson Signs With Sydney Uni Flames

Following four years playing college basketball with Saint Mary's, now-departed *Lauren Nicholson* signed with the Brydens Sydney Uni Flames. Nicholson returns to Sydney after a stellar college career at Saint Mary's, where the guard was a two-time All-West Coast Conference first team selection.

Nicholson was part of the Flames squad from 2009-11 before making the move to the United States. After being mentored by current WNBL player and fellow Sutherland junior Kate Gaze for her first two seasons at Saint Mary's, Nicholson emerged as a leader in her own right in her final two years. Averaging 17 points per game in her senior campaign, Nicholson was exceptional at both getting to the line and hitting free throws.

Season and Career Totals

(Saint Mary's Record in such games...)

Double-Figure Scoring

Player	2016-17	Career
Beck	12 (5-7)	41 (31-10)
McKay	8 (3-5)	20 (14-6)
Raggio	7 (4-3)	26 (20-6)
Galland	6 (3-3)	19 (14-5)

Scoring Leader

Player	2016-17	Career
Beck	4 (3-1)	8 (6-2)
Raggio	2 (2-0)	6 (6-0)
Brookshire	0 (0-0)	4 (4-0)

Double-Doubles

Player	2016-17	Career
McKay	5 (0-5)	7 (2-5)
Raggio	1 (1-0)	6 (4-2)
Beck	0 (0-0)	5 (5-0)

Rebounding Leader

Player	2016-17	Career
McKay	5 (0-5)	12 (4-8)
Raggio	5 (5-0)	18 (14-4)
Beck	1 (1-0)	17 (14-3)

20+ Point Games

Player	2016-17	Career
Raggio	1 (1-0)	3 (3-0)
Beck	0 (0-0)	2 (2-0)

15+ Point Games

Player	2016-17	Career
Beck	6 (3-3)	13 (9-4)
Raggio	2 (2-0)	10 (9-1)
Galland	1 (0-1)	8 (6-2)

Assists Leader

Player	2016-17	Career
Beck	6 (4-2)	22 (15-7)
Mauldin	2 (0-2)	19 (12-7)
Raggio	1 (1-0)	8 (6-2)

10+ Rebound Games

Player	2016-17	Career
McKay	5 (0-5)	10 (3-7)
Raggio	1 (1-0)	7 (4-3)
Beck	0 (0-0)	8 (7-1)

WCC/NCAA WEEKLY REPORT (as of Jan. 3)

WCC STANDINGS

	CONF	GB	OVERALL	HOME	AWAY	NEUTRAL	STREAK
San Francisco	2-0	—	8-5	5-1	2-4	1-0	W2
Pacific	2-0	—	6-7	3-5	2-3	0-0	W3
San Diego	1-1	1	7-5	6-2	1-3	0-0	W1
BYU	1-1	1	7-6	2-2	2-3	3-1	W1
Saint Mary's	1-1	1	6-7	2-4	4-3	0-0	L1
Santa Clara	1-1	1	6-7	3-1	1-3	2-3	L1
Pepperdine	1-1	1	3-10	2-5	1-5	0-0	L1
Portland	1-1	1	3-10	1-3	2-6	0-1	W1
Gonzaga	0-2	2	9-4	6-1	2-1	1-2	L2
Loyola Marymount	0-2	2	5-8	2-4	3-4	0-0	L4

THIS WEEK IN THE WCC

Thursday, Jan. 5, 2017:

Saint Mary's at BYU, 6 p.m. PST

San Francisco at Gonzaga, 6 p.m.

Pepperdine at Loyola Marymount, 7 p.m.

Santa Clara at Portland, 7 p.m.

San Diego at Pacific, 7 p.m.

Saturday, Jan. 7, 2017:

San Francisco at Saint Mary's, 1 p.m.

Portland at Gonzaga, 2 p.m.

BYU at Pacific, 2 p.m.

Loyola Marymount at Santa Clara, 2 p.m.

Pepperdine at San Diego, 7 p.m.

Player of the Week for Dec. 26, 2016-Jan. 1, 2017:

Michaela Rakova, San Francisco (16.0 ppg, 12.5 rpg)

Rakova helped lead the Dons to a 2-0 start to WCC play with back-to-back double-doubles. In the Dons' win at San Diego Thursday Rakova shot 5 for 9 from the field en route to an 11-point, 12-rebound night, while also adding three blocks. She followed that up by going 10 for 17 while knocking down her first 3-pointer of the year in leading USF with 21 points and 13 boards in a win over Santa Clara on Saturday.

AP Top-25 Poll (Jan. 2)

School	Record	Pts.	Prev.
1. Connecticut	13-0	825	1
2. Baylor	13-1	781	3
3. Maryland	13-1	739	4
4. Mississippi State	15-0	714	5
5. South Carolina	11-1	691	6
6. Florida State	13-1	654	7
7. Notre Dame	12-2	651	2
8. Louisville	3-2	610	8
9. UCLA	11-2	551	10
10. Stanford	12-2	497	13
11. Ohio State	12-4	440	14
12. Washington	14-2	418	9
13. Duke	12-1	415	15
14. Miami (Fla.)	11-2	405	11
15. Texas	8-4	324	16
16. Oregon State	13-1	304	22
17. West Virginia	13-1	289	12
18. Virginia Tech	13-0	282	19
19. Arizona State	10-3	256	18
t-20. Oklahoma	11-3	160	24
t-20. California	13-1	160	21
22. South Florida	11-1	146	23
23. DePaul	10-4	88	NR
24. Kentucky	9-5	71	17
25. Kansas State	11-3	54	NR

Also Receiving Votes: Tennessee 42, Colorado 38, Syracuse 37, North Carolina State 26, Texas A&M 11, Utah 10, Mississippi 6, Green Bay 5, Michigan 5, Southern Cal 5, **Boise State 5**, Northwestern 4, Marquette 3, Oklahoma State 2, Georgia Tech 1.

() - First-place votes; **Bold** - SMC Opponent

WCC TEAM LEADERS

Scoring Offense	PPG
1. Pacific	78.2
4. Saint Mary's	71.2
Scoring Defense	PPG
1. Gonzaga	57.9
5. Saint Mary's	68.1
Field Goal Percentage	%
1. Saint Mary's	45.6
2. Pacific	44.2
3-Point Percentage	%
1. Pacific	38.0
t-2. Saint Mary's/Gonzaga	33.7
Free-Throw Percentage	%
1. Pacific	76.3
8. Saint Mary's	67.9
Rebounds	RPG
1. Saint Mary's	42.2
2. Gonzaga	41.6
Assists	APG
1. Loyola Marymount	16.2
3. Saint Mary's	15.8
Assist/Turnover Ratio	A/T
1. Gonzaga	1.01
7. Saint Mary's	0.84

WCC INDIVIDUAL LEADERS

Scoring	PPG
1. Maya Hood, San Diego	18.1
7. Stella Beck, Saint Mary's	13.8
Rebounds	RPG
1. Jackie Johnson, LMU	9.9
8. Megan McKay, Saint Mary's	7.6
Field Goal Percentage	%
1. Megan McKay, Saint Mary's	59.8
2. Kiara Kudron, Gonzaga	58.0
3-Point Percentage	%
1. Kalyn Simon, San Francisco	50.0
9. Devyn Galland, Saint Mary's	41.1
Free-Throw Percentage	%
1. Emily Wolph	90.6
4. Devyn Galland, Saint Mary's	85.2
Assists	APG
1. GeAnna Luaulu-Summers, Pacific	5.9
10. Stella Beck, Saint Mary's	3.7
Steals	SPG
1. Maya Hood, San Diego	2.8
--. Stella Beck, Saint Mary's	1.2
Blocks	BPG
1. Jackie Johnson, LMU	2.4
8. Carly Turner, Saint Mary's	0.9

Saint Mary's in the WCC/NCAA



Scoring Offense (71.2)	4	84
Scoring Defense (68.1)	5	-
Scoring Margin (3.2)	4	-
FG % (45.6)	1	31
FG % Defense (39.7)	5	-
3-Pt FG % (33.7)	3	92
3-Pt FG % Defense (30.4)	3	-
Free-Throw % (67.9)	8	-
Total Rebounds (548)	1	104
Rebounds/Game (42.15)	1	57
Rebounding Margin (+10.4)	1	16
Blocks/Game (3.3)	7	-
Steals/Game (6.2)	10	-
Assists/Game (15.8)	3	65
Turnovers/Game (18.9)	10	-
Turnover Margin (-4.38)	10	-
Assist/Turnover Ratio (0.84)	7	-



Paul Thomas

- Head Coach in 11th Season at Saint Mary's
- 201-131 record with the Gaels (.605 winning Pct.)
- 437-289 record in 24+ years of coaching (.602 winning Pct.)
- Graduated from Wayne State College in 1988
- Played college basketball at Midland Lutheran College

Head coach Paul Thomas enters his 11th season at Saint Mary's in 2016-17. Thomas is the eighth head coach in the program's 30-year history.

In his 11 seasons, Thomas has accumulated a 201-131 record at SMC and a career record of 437-289 in 25 years of coaching.

Additionally, the Gaels have been one of the winningest programs in the state of California. Since the 2009-10 season through 2015-16, the Gaels have a seven-year win total of 155 wins, which ranks fourth in the state ahead of notable schools in San Diego (153), UCLA (151), San Diego State (124) and USC (128).

In 2015-16, the Gaels improved upon a successful 2014-15 campaign, finishing second in the WCC and capturing the second most wins in school history with 24. During the record-setting season, SMC advanced to its seventh consecutive postseason appearance as the Gaels competed in the WNIT. Saint Mary's also scored the most points in school history with 2,388 and led the nation in free-throws made with 559.

In 2014-15, Thomas earned the West Coast Conference Co-Coach of the Year Award as the Gaels improved to a third-place finish, despite losing a trio of 1,000 point scorers from the previous year. During the year the Gaels completed their third consecutive 23-win season and advanced to the WNIT Quarterfinals. The Gaels finished the year ranked seventh in the nation in Rebounding Margin.

Since his first season with the Gaels in 2006-07, the Gaels have had 24 WCC All-Conference award winners, including the 2009-10 Defensive Player of the Year in Louella Tomlinson. The Saint Mary's women's basketball record book has numerous of Thomas' student-athletes in various categories. Jackie Nared (2013-14) ranks first in single-season scoring, while Lauren

Nicholson (2014-15, 3rd), Danielle Mauldin (2013-14, 5th), Nared (2012-13, 7th) and Jasmine Smith (2010-11, 10th) all rank in the single-season top-10.

Thomas joined Saint Mary's after serving as head women's coach at Cal Poly Pomona for 12 seasons. Thomas led Cal Poly Pomona to back-to-back NCAA Division II National Championships in 2001 and 2002. While at Cal Poly Pomona, Thomas reached the Sweet Sixteen four out of his last seven seasons, won five California Collegiate Athletic Association championships and was named the NCAA Division II National Coach of the Year and NCAA District 8 Coach of the Year in 2002.

Thomas reached the Division II NCAA Tournament eight out of the 12 seasons with a 14-6 postseason record. He has recruited and coached two National Players of the Year, six First Team Kodak All-Americans, four CCAA Players of the Year and 15 First Team All-Conference players.

Thomas played two years of college basketball at Midland Lutheran College (Fremont, Neb.) before transferring to Wayne State to concentrate on coaching. He played his high school ball at Creighton (Neb.) High School where he was an all-state forward and the team's Most Valuable Player for the Bulldogs.

Paul resides in Concord with his wife Alexis and has three children Jacob, Michaela and Annika.



Thomas vs. 2016-17 Opponents

Opponent	Overall
Boise State	0-1
Boston College	1-0
BYU	
California	0-1
Cal Poly	1-0
CSUN	0-1
Gonzaga	
Loyola Marymount	1-0
Northeastern	1-0
Northern Colorado	1-0
Pacific	
Pepperdine	
Portland	
San Diego	0-1
San Francisco	
San Jose State	1-0
Santa Clara	
UC Davis	0-1
Utah	0-1
Washington State	0-1

Thomas' Milestone Victories

- #1 61-57 vs. St. Mary's (MN) (2/13/89)
- #100 73-62 at San Fran. St. (1/7/00)
- #200 60-59 at UC Davis (2/27/04)
- #300 56-50 vs. Wisconsin (11/27/10)
- #400 53-49 at Pepperdine (1/31/15)

Saint Mary's Milestone Victories

- #1 69-68 vs. Miami (FL) (11/17/06)
- #100 63-60 at Pepperdine (2/25/12)
- #200 75-65 vs. N. Colorado (12/16/16)



3

Jasmine Forcadilla

R-Fr. • G • 5-8
Terrigal, NSW, Australia
St. Joseph's Catholic

Season Highs

Points..... 10 (12/16 vs. N. Colorado)
Rebounds.....3 (3 Times)
Assists..... 7 (12/3 at San Jose State)
3-Pointers 1 (12/16 vs. N. Colorado)
Steals1 (4 Times)
Blocks1 (12/31 at San Diego)

Career Highs

Points..... Same
Rebounds..... Same
Assists..... Same
3-Pointers Same
Steals Same
Blocks Same

AS A FRESHMAN (2016-17):

- Made her collegiate debut in the season opener against California on Nov. 11
- Notched a season-high seven assists in 20 minutes at San Jose State on Dec. 3
- Posted her first double-figure scoring game with 10 points versus Northern Colorado on Dec. 16
- Played a season-high 23 minutes in a 74-59 WCC-opening win over LMU on Dec. 29

CAREER HIGHLIGHTS:

- Led the NSW squad to a fourth-place finish at the 2015 U20 Australian Junior Championships
- In 2014 at the U18s, Forcadilla was the tournament's leading scorer with 25 ppg, 3 rpg and 4 apg
- Had a high of 39 points against QLD South

2016-17 Game-by Game

Opponent	Min.	Pts.	Reb.	3-Pt's	S	A	B
California	3	0	2	0	0	1	0
at Washington State	13	0	0	0	0	1	0
at Northeastern	12	0	2	0	1	3	0
at Boston College	DNP	-	-	-	-	-	-
Boise State	9	1	1	0	1	1	0
Utah	9	4	0	0	0	2	0
at Cal Poly	16	6	3	0	0	1	0
at San Jose State	20	2	3	0	0	7	0
at UC Davis	10	0	0	0	0	1	0
Northern Colorado	18	10	3	1	1	2	0
CSUN	12	0	1	0	0	0	0
Loyola Marymount	23	4	1	0	0	4	0
at San Diego	13	0	0	0	1	0	1
at BYU							
San Francisco							
Portland							
Gonzaga							
at Pacific							
at Pepperdine							
at San Francisco							
Santa Clara							
Pacific							
San Diego							
at Portland							
at Gonzaga							
at Loyola Marymount							
BYU							
Pepperdine							
at Santa Clara							

Career Statistics

Year	GP-GS	Min	FG-FGA	Pct.	3P-3PA	Pct	FT-FTA	Pct	Reb.	Avg	PF	FO	Ast	TO	Blk	Stl	Pts	Avg
2016-17	12-0	158	7-31	.226	1-9	.111	12-16	.750	16	1.3	15	0	23	23	1	4	27	2.3
Total	12-0	158	7-31	.226	1-9	.111	12-16	.750	16	1.3	15	0	23	23	1	4	27	2.3



4

Devyn Galland

R-Sr. • G • 5-8
Spokane, Wash.
Lewis & Clark HS

Season Highs

Points..... 18 (11/13 at Washington State)
Rebounds..... 4 (11/11 vs. California)
Assists 5 (11/11 vs. California)
3-Pointers 4 (11/13 at Washington St.)
Steals3 (11/26 vs. Utah)
Blocks1 (12/11 at UC Davis)

Career Highs

Points...25 (3/17/16 vs. Eastern Michigan)
Rebounds.....6 (3 Times)
Assists..... Same
3-Pointers5 (2 Times)
Steals Same
Blocks1 (4 Times)

AS A REDSHIRT SENIOR (2016-17):

- Scored a season-high 18 points on 5-7 from the floor with four 3-pointers at Washington State
- Scored 14 and 11 in back-to-back wins against Northeastern and Boston College
- Dished 5 assists and came down with 4 rebounds against California

CAREER HIGHLIGHTS:

- Transferred to Saint Mary's in 2013 from Oregon and made her SMC debut as a redshirt sophomore in the 2014-15 season
- Scored a career-high 25 points in an NIT match versus Eastern Michigan on Mar. 17, 2015
- Hit a career-high five three-pointers in a win over Washington State on Dec. 12, 2014

2016-17 Game-by Game

Opponent	Min.	Pts.	Reb.	3-Pt's	S	A	B
California	38*	4	4	1	0	5	0
at Washington State	36*	18	3	4	0	3	0
at Northeastern	30*	14	3	3	0	3	0
at Boston College	40*	11	2	2	0	2	0
Boise State	32*	10	2	2	0	1	0
Utah	24*	5	1	1	3	4	0
at Cal Poly	28*	13	2	1	1	2	0
at San Jose State	21*	9	3	3	0	2	0
at UC Davis	21*	0	0	0	1	1	1
Northern Colorado	15*	3	1	1	1	0	0
CSUN	29*	13	1	2	2	4	0
Loyola Marymount	24*	3	2	1	1	2	0
at San Diego	32*	9	2	2	0	1	0
at BYU							
San Francisco							
Portland							
Gonzaga							
at Pacific							
at Pepperdine							
at San Francisco							
Santa Clara							
Pacific							
San Diego							
at Portland							
at Gonzaga							
at Loyola Marymount							
BYU							
Pepperdine							
at Santa Clara							

Career Statistics

Year	GP-GS	Min	FG-FGA	Pct.	3P-3PA	Pct.	FT-FTA	Pct.	Reb.	Avg	PF	FO	Ast	TO	Blk	Stl	Pts	Avg
2014-15	33-1	363	34-88	.386	13-42	.310	68-79	.861	36	1.1	40	0	19	40	0	7	149	4.5
2015-16	32-14	671	70-183	.383	45-101	.446	57-67	.851	97	3.0	52	0	48	42	3	14	242	7.6
2016-17	13-13	370	33-85	.388	23-56	.411	23-27	.852	26	2.0	29	1	30	25	1	9	112	8.6
Total	78-28	1,398	137-356	.385	81-199	.407	148-173	.855	159	2.0	121	1	97	107	4	30	503	6.4

* - Started game



5

Jordon Hobson

Fr. • F • 5-10
Richmond, Calif.
Salesian

Season Highs

Points.....	0
Rebounds.....	2 (11/13 at Washington St.)
Assists.....	0
3-Pointers.....	0
Steals.....	0
Blocks.....	0

Career Highs

Points.....	0
Rebounds.....	Same
Assists.....	0
3-Pointers.....	0
Steals.....	0
Blocks.....	0

AS A FRESHMAN (2016-17):

- Made her collegiate debut on Nov. 13 against Washington State where she came away with 2 rebounds in 3 minutes
- Pulled down 1 rebound in 2 minutes of action against Northeastern

CAREER HIGHLIGHTS:

- Graduated from Salesian High School where she led her team to a 28-4 record
- They went on to win the NCS division IV section championship, competing in the Open Division in NorCal Regionals
- She averaged 10.7 ppg, 3.9 rpg and 1.6 steals per game as a junior, reaching double figures in 20 games

2016-17 Game-by Game

Opponent	Min.	Pts.	Reb.	3-Pt's	S	A	B
California	DNP	-	-	-	-	-	-
at Washington State	3	0	2	0	0	0	0
at Northeastern	2	0	1	0	0	0	0
at Boston College	DNP	-	-	-	-	-	-
Boise State	DNP	-	-	-	-	-	-
Utah	DNP	-	-	-	-	-	-
at Cal Poly	DNP	-	-	-	-	-	-
at San Jose State	DNP	-	-	-	-	-	-
at UC Davis	DNP	-	-	-	-	-	-
Northern Colorado	DNP	-	-	-	-	-	-
CSUN	DNP	-	-	-	-	-	-
Loyola Marymount	1	0	0	0	0	0	0
at San Diego	DNP	-	-	-	-	-	-
at BYU							
San Francisco							
Portland							
Gonzaga							
at Pacific							
at Pepperdine							
at San Francisco							
Santa Clara							
Pacific							
San Diego							
at Portland							
at Gonzaga							
at Loyola Marymount							
BYU							
Pepperdine							
at Santa Clara							

Career Statistics

Year	GP-GS	Min	FG-FGA	Pct.	3P-3PA	Pct.	FT-FTA	Pct.	Reb.	Avg	PF	FO	Ast	TO	Blk	Stl	Pts	Avg
2016-17	3-0	6	0-2	.000	0-1	.000	0-0	.000	3	1.5	1	0	0	1	0	0	0	0.0
TOTAL	3-0	6	0-2	.000	0-1	.000	0-0	.000	3	1.5	1	0	0	1	0	0	0	0.0



10

Carly Turner

Jr. • G • 6-0
Eltham, Victoria, Australia
Australian Institute of Sport

Season Highs

Points.....	21 (11/11 vs. California)
Rebounds.....	10 (12/16 vs. N. Colorado)
Assists.....	6 (12/11 at UC Davis)
3-Pointers.....	4 (12/11 at UC Davis)
Steals.....	3 (11/13 at Washington St.)
Blocks.....	2 (4 Times)

Career Highs

Points.....	Same
Rebounds.....	10 (4 Times)
Assists.....	6 (2 Times)
3-Pointers.....	Same
Steals.....	Same
Blocks.....	2 (5 Times)

AS A JUNIOR (2016-17):

- Scored her career-high of 21 points on 8-16 shooting and pulled down 8 rebounds in season opener versus California
- Made career-high four 3-pointers with 18 points, 8 rebounds and 6 assists at UC Davis (12/11)
- Posted her first career double-double with 18 points & 10 rebounds versus Northern Colorado

CAREER HIGHLIGHTS:

- As a sophomore in 2015-16, finished the year shooting 45.3 percent from the floor and 40.9 from beyond the arc
- As a freshman, scored a season-high 18 points and eight rebounds against San Francisco on Feb. 26, 2015
- In 2015, scored 15 points in a WNIT first-round win over Hawaii on and 15 again in a WNIT second-round win over Sacramento State on Mar. 26

2016-17 Game-by Game

Opponent	Min.	Pts.	Reb.	3-Pt's	S	A	B
California	33*	21	8	2	2	1	0
at Washington State	22*	5	2	1	3	3	2
at Northeastern	24*	9	4	1	1	2	0
at Boston College	29*	0	2	0	1	5	1
Boise State	28*	0	6	0	1	4	0
Utah	32*	11	7	2	2	2	2
at Cal Poly	26*	11	5	3	2	0	0
at San Jose State	27*	8	6	2	0	4	2
at UC Davis	33*	18	8	4	0	6	1
Northern Colorado	29*	18	10	3	0	4	0
CSUN	32*	2	8	0	0	2	2
Loyola Marymount	27*	12	3	3	1	3	1
at San Diego	31*	10	4	0	0	2	1
at BYU							
San Francisco							
Portland							
Gonzaga							
at Pacific							
at Pepperdine							
at San Francisco							
Santa Clara							
Pacific							
San Diego							
at Portland							
at Gonzaga							
at Loyola Marymount							
BYU							
Pepperdine							
at Santa Clara							

Career Statistics

Year	GP-GS	Min	FG-FGA	Pct.	3P-3PA	Pct.	FT-FTA	Pct.	Reb.	Avg	PF	FO	Ast	TO	Blk	Stl	Pts	Avg
2014-15	33-1	503	54-154	.351	19-71	.268	29-39	.744	123	3.7	19	0	29	37	13	18	156	4.7
2015-16	31-1	498	72-159	.453	27-66	.409	24-30	.800	115	3.7	41	0	50	47	12	10	195	6.3
2016-17	13-13	373	46-121	.380	21-55	.382	12-15	.800	73	5.6	23	1	38	34	12	13	125	9.6
Total	77-15	1,374	172-434	.396	67-192	.349	65-84	.774	311	4.0	83	1	117	118	37	41	476	6.2

* - Started game



11

Morgan Malloy

Fr. • G • 5-3
Napa, Calif.
Justin-Siena

Season Highs

Points.....	0
Rebounds.....	1 (12/3 at San Jose State)
Assists.....	0
3-Pointers.....	0
Steals.....	0
Blocks.....	0

Career Highs

Points.....	0
Rebounds.....	Same
Assists.....	0
3-Pointers.....	0
Steals.....	0
Blocks.....	0

AS A FRESHMAN (2016-17):

- Made her collegiate debut for Saint Mary's at Northeastern on Nov. 18, playing two minutes
- Grabbed her first college rebound on Dec. 3 at San Jose State in an 85-64 win

CAREER HIGHLIGHTS:

- Averaged 15.3 ppg and 3.3 assists per game and was named Player of the Year during her senior year at Justin Siena
- Scored a career high 30 pts as a senior in a win over Arcata HS.
- Helped her team to a birth in the CIF Division 4 State Championship game after winning the NorCal Division 4 Championship in 2014

2016-17 Game-by Game

Opponent	Min.	Pts.	Reb.	3-Pt's	S	A	B
California	DNP	-	-	-	-	-	-
at Washington State	DNP	-	-	-	-	-	-
at Northeastern	2	0	0	0	0	0	0
at Boston College	DNP	-	-	-	-	-	-
Boise State	DNP	-	-	-	-	-	-
Utah	DNP	-	-	-	-	-	-
at Cal Poly	DNP	-	-	-	-	-	-
at San Jose State	1	0	1	0	0	0	0
at UC Davis	DNP	-	-	-	-	-	-
Northern Colorado	DNP	-	-	-	-	-	-
CSUN	DNP	-	-	-	-	-	-
Loyola Marymount	1	0	0	0	0	0	0
at San Diego	DNP	-	-	-	-	-	-
at BYU							
San Francisco							
Portland							
Gonzaga							
at Pacific							
at Pepperdine							
at San Francisco							
Santa Clara							
Pacific							
San Diego							
at Portland							
at Gonzaga							
at Loyola Marymount							
BYU							
Pepperdine							
at Santa Clara							

Career Statistics

Year	GP-GS	Min	FG-FGA	Pct.	3P-3PA	Pct.	FT-FTA	Pct.	Reb	Avg	PF	FO	Ast	TO	Blk	Stl	Pts	Avg
2016-17	3-0	4	0-0	.000	0-0	.000	0-0	.000	1	0.3	0	0	0	0	0	0	0	0.0
Total	3-0	4	0-0	.000	0-0	.000	0-0	.000	1	0.5	0	0	0	0	0	0	0	0.0



12

Sydney Raggio

So. • F • 6-1
San Bruno, Calif.
St. Ignatius

Season Highs

Points.....	22 (11/20 at Boston College)
Rebounds.....	12 (12/3 at San Jose State)
Assists.....	4 (12/1 at Cal Poly)
3-Pointers.....	1 (4 Times)
Steals.....	3 (11/18 at Northeastern)
Blocks.....	3 (12/31 at San Diego)

Career Highs

Points.....	26 (11/15/15 vs. San Jose St.)
Rebounds.....	15 (12/12/15 vs. Wash. St.)
Assists.....	6 (2 Times)
3-Pointers.....	1 (11 Times)
Steals.....	Same
Blocks.....	4 (2 Times)

AS A SOPHOMORE (2016-17):

- Scored a season-high 22 on 11-14 shooting while pulling down 8 rebounds in a win at Boston College
- Logged her first double-double of the season at San Jose State with 12 points & 12 rebounds
- Named Saint Mary's Muscle Milk Student-Athlete of the Week for the week of Nov. 14-20 after averaging 17.0 points and 8.5 rebounds in two wins while shooting 77.8 percent
- Scored 14 points and pulled down 8 boards against Boise State at home on Nov. 25

CAREER HIGHLIGHTS:

- Named to the 2015-16 WCC All-Freshman Team
- Tallied up 15 points and 9 rebounds against CSUN in her first game as a Gaelon Nov. 13, 2015
- Scored a career-high 26 points with 10 rebounds in a win against San Jose State on Nov. 15
- Averaged 47.1 percent from the floor and 46.7 percent from three-point range over her freshman year

2016-17 Game-by Game

Opponent	Min.	Pts.	Reb.	3-Pt's	S	A	B
California	26*	13	7	1	1	0	1
at Washington State	18*	9	6	1	0	0	1
at Northeastern	25*	12	9	0	3	0	1
at Boston College	33*	22	8	0	1	1	1
Boise State	32*	14	8	0	0	2	0
Utah	23*	6	5	0	1	3	0
at Cal Poly	24*	9	9	0	0	4	0
at San Jose State	22*	12	12	0	1	3	1
at UC Davis	30*	12	8	0	0	1	0
Northern Colorado	35*	18	6	0	0	3	0
CSUN	31*	8	9	0	0	2	2
Loyola Marymount	18*	7	8	1	0	2	0
at San Diego	18*	9	2	1	0	0	3
at BYU							
San Francisco							
Portland							
Gonzaga							
at Pacific							
at Pepperdine							
at San Francisco							
Santa Clara							
Pacific							
San Diego							
at Portland							
at Gonzaga							
at Loyola Marymount							
BYU							
Pepperdine							
at Santa Clara							

Career Statistics

Year	GP-GS	Min	FG-FGA	Pct.	3P-3PA	Pct.	FT-FTA	Pct.	Reb	Avg	PF	FO	Ast	TO	Blk	Stl	Pts	Avg
2015-16	31-25	817	153-325	.471	7-15	.467	46-64	.719	221	7.1	72	1	64	70	28	20	359	11.6
2016-17	13-13	335	68-133	.511	4-6	.667	11-24	.458	97	7.5	26	0	21	25	10	7	151	11.6
Total	44-38	1,152	221-458	.483	11-21	.524	57-88	.648	318	7.2	98	1	85	95	38	27	510	11.6

* - Started game



13

Tyra Moe

Fr. • F • 6-1
Honolulu
Punahou

Season Highs

Points.....4 (11/25 vs. Boise State)
Rebounds.....2 (4 Times)
Assists.....1 (2 Times)
3-Pointers.....0
Steals.....0
Blocks.....1 (11/18 at Northeastern)

Career Highs

Points..... Same
Rebounds..... Same
Assists..... Same
3-Pointers..... 0
Steals..... 0
Blocks..... Same

AS A FRESHMAN (2016-17):

- Made her collegiate debut against California on Nov. 11 where she recorded her first points as a Gael
- Played a season-high 14 minutes at San Jose State on Dec. 3 in an 85-64 Gaels win
- Scored a season-high four points versus Boise State in the Hilton Concord Classic on Nov. 25
- Recorded a block in 9 minutes of play at Northeastern on Nov. 18

CAREER HIGHLIGHTS:

- Averaged 13.2 points per game as a senior for Punahou HS with a season high of 24
- Was the IHL (Interscholastic League of Honolulu) Player of the Year in 2014 and 2016
- Was named 2nd Team All-USA Hawaii in 2016
- Led her team to three straight trips to the Hawaii High School Athletic Association State Tournament

Career Statistics

Year	GP-GS	Min	FG-FGA	Pct.	3P-3PA	Pct.	FT-FTA	Pct.	Reb	Avg	PF	FO	Ast	TO	Blk	Stl	Pts	Avg
2016-17	12-0	92	6-11	.545	0-0	.000	2-4	.500	9	0.8	3	0	2	4	1	0	14	1.2
Total	12-0	92	6-11	.545	0-0	.000	2-4	.500	9	0.8	3	0	2	4	1	0	14	1.2

2016-17 Game-by Game

Opponent	Min.	Pts.	Reb.	3-Pt's	S	A	B
California	9	2	0	0	0	1	0
at Washington State	9	0	0	0	0	0	0
at Northeastern	9	0	0	0	0	0	1
at Boston College	DNP	-	-	-	-	-	-
Boise State	8	4	0	0	0	0	0
Utah	10	3	2	0	0	0	0
at Cal Poly	4	0	0	0	0	0	0
at San Jose State	14	2	2	0	0	1	0
at UC Davis	4	0	0	0	0	0	0
Northern Colorado	7	0	2	0	0	0	0
CSUN	6	2	1	0	0	0	0
Loyola Marymount	7	1	2	0	0	0	0
at San Diego	5	0	0	0	0	0	0
at BYU							
San Francisco							
Portland							
Gonzaga							
at Pacific							
at Pepperdine							
at San Francisco							
Santa Clara							
Pacific							
San Diego							
at Portland							
at Gonzaga							
at Loyola Marymount							
BYU							
Pepperdine							
at Santa Clara							



14

Shannon Mauldin

R-Sr. • G • 5-9
Emeryville, Calif.
St. Mary's College HS

Season Highs

Points.....18 (12/31 at San Diego)
Rebounds.....7 (12/31 at San Diego)
Assists.....3 (3 Times)
3-Pointers.....1 (12/19 vs. CSUN)
Steals.....3 (11/11 vs. California)
Blocks.....1 (3 Times)

Career Highs

Points.....32 (3/20/15 vs. Hawaii)
Rebounds.....10 (2 Times)
Assists.....7 (2/12/15 vs. BYU)
3-Pointers.....4 (1/31/15 at Pepperdine)
Steals.....5 (3 Times)
Blocks.....4 (3/26/15 at Sacramento St.)

AS A REDSHIRT SENIOR (2016-17):

- Recorded a season-high 10 points along with 5 rebounds in win at Northeastern
- Tallied up 3 steals against California at home
- Racked up 3 assists along with 7 points at Washington State
- Played a season-high 22 minutes with three assists and four rebounds versus Northern Colo.

CAREER HIGHLIGHTS:

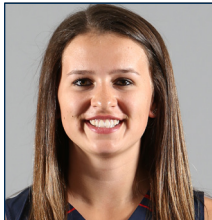
- As a Junior in 2014-15, recorded in a career-high 32 points with 6 rebounds in the WNIT win over Hawaii
- Was named WCC Player of the Week after a BYU/USD home sweep in February of 2015
- Scored 21 points with 5 rebounds and seven assists in the home win over BYU on Feb. 12
- In 2015-16, started the first 5 games of the season before having to sit out the rest of the season due to injury

Career Statistics

Year	GP-GS	Min	FG-FGA	Pct.	3P-3PA	Pct.	FT-FTA	Pct.	Reb	Avg	PF	FO	Ast	TO	Blk	Stl	Pts	Avg
2012-13	22-0	87	5-25	.200	1-5	.200	5-12	.417	13	0.6	14	0	3	4	1	5	16	0.8
2013-14	32-18	685	55-141	.390	12-44	.273	77-104	.740	94	2.9	77	1	42	53	8	24	199	6.2
2014-15	34-34	951	108-310	.348	19-64	.297	132-179	.737	193	5.7	81	3	80	125	30	67	367	10.8
2015-16	5-5	115	14-49	.286	0-10	.000	10-15	.667	16	3.2	8	0	8	16	2	13	38	7.6
2016-17	13-0	230	26-66	.394	1-12	.083	30-42	.714	44	3.4	25	0	20	24	3	12	83	6.4
Total	106-57	2,068	208-591	.352	33-135	.244	254-352	.722	360	3.4	205	4	153	222	44	121	703	6.6

2016-17 Game-by Game

Opponent	Min.	Pts.	Reb.	3-Pt's	S	A	B
California	19	3	1	0	3	1	0
at Washington State	16	7	1	0	0	3	0
at Northeastern	17	10	5	0	0	1	0
at Boston College	12	3	3	0	1	0	0
Boise State	15	5	0	0	1	2	0
Utah	15	4	2	0	2	1	0
at Cal Poly	18	6	5	0	1	1	1
at San Jose State	14	8	6	0	0	2	0
at UC Davis	18	1	2	0	0	2	0
Northern Colorado	22	2	4	0	1	3	1
CSUN	17	7	3	1	0	0	0
Loyola Marymount	18	9	5	0	2	1	0
at San Diego	29	18	7	0	1	3	1
at BYU							
San Francisco							
Portland							
Gonzaga							
at Pacific							
at Pepperdine							
at San Francisco							
Santa Clara							
Pacific							
San Diego							
at Portland							
at Gonzaga							
at Loyola Marymount							
BYU							
Pepperdine							
at Santa Clara							



20

Katie Rathbun

So. • G • 6-0
Concord, Calif.
Carondelet

Season Highs

Points.....3 (12/3 at San Jose State)
Rebounds..... 1 (11/13 at Washington St.)
Assists..... 0
3-Pointers1 (12/3 at San Jose State)
Steals 1 (11/13 at Washington St.)
Blocks 0

Career Highs

Points.....3 (4 Times)
Rebounds.....1 (5 Times)
Assists.. 2 (1/7/16 vs. Loyola Marymount)
3-Pointers1 (4 Times)
Steals1 (3 Times)
Blocks 0

AS A SOPHOMORE (2016-17):

- Recorded 1 rebound and 1 steal in 7 minutes of play at Washington State on Nov. 1
- Tallied up her first 2 points of the season against Boise State on Nov. 25
- Hit her first 3-pointer of the year on Dec. 3 at San Jose State in an 85-64 victory

CAREER HIGHLIGHTS:

- Averaged 4.4 minutes per game in her first season as a Gael
- Hit her first three-pointer of the season against Missouri on Nov. 28
- Led Carondelet HS to a D2 NCS Championship title where she shot 9-16 including 6-9 from beyond the arc in the championship game

2016-17 Game-by Game

Opponent	Min.	Pts.	Reb.	3-Pt's	S	A	B
California	DNP	-	-	-	-	-	-
at Washington State	7	0	1	0	1	0	0
at Northeastern	8	0	0	0	0	0	0
at Boston College	4	0	0	0	0	0	0
Boise State	4	2	0	0	0	0	0
Utah	2	0	0	0	0	0	0
at Cal Poly	DNP	-	-	-	-	-	-
at San Jose State	8	3	0	1	0	0	0
at UC Davis	4	0	0	0	0	0	0
Northern Colorado	3	0	0	0	0	0	0
CSUN	DNP	-	-	-	-	-	-
Loyola Marymount	3	0	0	0	0	0	0
at San Diego	2	0	0	0	0	0	0
at BYU							
San Francisco							
Portland							
Gonzaga							
at Pacific							
at Pepperdine							
at San Francisco							
Santa Clara							
Pacific							
San Diego							
at Portland							
at Gonzaga							
at Loyola Marymount							
BYU							
Pepperdine							
at Santa Clara							

Career Statistics

Year	GP-GS	Min	FG-FGA	Pct.	3P-3PA	Pct.	FT-FTA	Pct.	Reb	Avg	PF	FO	Ast	TO	Blk	Stl	Pts	Avg
2015-16	22-0	96	3-12	.250	3-11	.273	2-2	1.000	4	0.2	6	0	3	8	0	2	11	0.5
2016-17	10-0	45	1-5	.200	1-5	.200	2-2	1.000	1	0.1	3	0	0	4	0	1	5	0.5
Total	32-0	141	4-17	.235	4-16	.250	4-4	1.000	5	0.2	9	0	3	12	0	3	16	0.5



21

Stella Beck

Jr. • G • 6-0
Wellington, New Zealand
Hutt Valley

Season Highs

Points.....18 (2 Times)
Rebounds.....9 (2 Times)
Assists9 (11/25 vs. Boise State)
3-Pointers1 (3 Times)
Steals 4 (12/19 vs. CSUN)
Blocks 2 (12/1 at Cal Poly)

Career Highs

Points.... 27 (2/13/16 at Loyola Marymount)
Rebounds..... 14 (11/24/14 vs. Sac. St.)
Assists..... Same
3-Pointers 3 (11/29/14 vs. Iowa St.)
Steals5 (2/11/16 at Pepperdine)
Blocks 4 (2/13/16 at Loyola Marymount)

AS A JUNIOR (2016-17):

- Led the Gaels with 18 points on 7-19 from the field with 5 rebounds and 4 assists in a win at Northeastern
- Racked up 15 points, 5 rebounds and a career-high 9 assists against Boise State at home
- Missed a double-double by 1 rebound against Utah finishing with 11 points and 9 boards
- Nearly had a triple-double at San Jose State on Dec. 3 with 8 points, 6 rebounds and 7 assists

CAREER HIGHLIGHTS:

- As a sophomore in 2015-16, recorded a career-high 27 points shooting 10-11 in a win against LMU
- Finished 2015-16 in the WCC top-three in field-goal percentage
- As a freshman in 2014-15, recorded 4 double-doubles and led the WCC in field goal percentage shooting at a .550 clip for the year

2016-17 Game-by Game

Opponent	Min.	Pts.	Reb.	3-Pt's	S	A	B
California	28*	11	4	1	2	2	0
at Washington State	24*	17	3	0	0	2	0
at Northeastern	27*	18	5	0	1	4	0
at Boston College	36*	10	5	0	1	5	0
Boise State	32*	15	5	0	0	9	0
Utah	37*	11	9	0	1	2	0
at Cal Poly	31*	17	5	1	1	4	2
at San Jose State	29*	8	6	0	0	7	0
at UC Davis	34*	12	6	0	2	2	0
Northern Colorado	33*	14	9	0	1	3	1
CSUN	29*	15	3	0	4	4	1
Loyola Marymount	30*	18	8	1	1	2	1
at San Diego	29*	14	2	0	2	2	0
at BYU							
San Francisco							
Portland							
Gonzaga							
at Pacific							
at Pepperdine							
at San Francisco							
Santa Clara							
Pacific							
San Diego							
at Portland							
at Gonzaga							
at Loyola Marymount							
BYU							
Pepperdine							
at Santa Clara							

Career Statistics

Year	GP-GS	Min	FG-FGA	Pct.	3P-3PA	Pct.	FT-FTA	Pct.	Reb	Avg	PF	FO	Ast	TO	Blk	Stl	Pts	Avg
2014-15	33-33	921	99-180	.550	7-27	.259	62-110	.564	200	6.1	88	1	63	95	12	33	267	8.1
2015-16	28-23	732	99-177	.559	2-11	.182	77-107	.720	162	5.8	72	1	78	80	16	29	277	9.9
2016-17	13-13	399	66-120	.550	3-14	.214	45-64	.703	70	5.4	37	1	48	44	5	16	180	13.8
Total	74-69	2,055	264-477	.553	12-52	.231	184-281	.655	432	5.8	197	3	189	219	33	78	724	9.8

* - Started game



22

Devon Brookshire
R-Sr. • F • 6-2
Rancho Palos Verdes, Calif.
Northwestern University

Season Highs

Points..... 13 (12/1 at Cal Poly)
Rebounds..... 7 (12/11 at UC Davis)
Assists 2 (3 times)
3-Pointers 2 (12/1 at Cal Poly)
Steals 1 (4 Times)
Blocks 1 (2 Times)

Career Highs

Points..... 23 (11/15/15 vs. San Jose St.)
Rebounds..... 16 (1/16/16 at Pacific)
Assists 4 (11/15/15 vs. San Jose St.)
3-Pointers 4 (11/15/15 vs. San Jose St.)
Steals 3 (1/23/16 at Portland)
Blocks 2 (11/27/15 vs. Fresno St.)

AS A REDSHIRT SENIOR (2016-17):

- Played 26 minutes in season-debut against California scoring 7 points and pulling down 2 rebounds
- Recorded 6 rebounds in 21 minutes in win at Northeastern
- Scored 6 points and pulled down 5 rebounds off the bench in win at Boston College

CAREER HIGHLIGHTS:

- Transferred from Northwestern University and made her Saint Mary's debut as a redshirt junior in 2015-16
- Started all 32 games averaging 42.5 percent shooting from the floor and 43.6 from 3-pt range
- Scored a career-high 23 points and 9 rebounds in a win against San Jose State on Nov. 15
- Recorded 22 points and a career-high 16 rebounds in a win at Pacific on Jan. 16, 2016

2016-17 Game-by Game

Opponent	Min.	Pts.	Reb.	3-Pt's	S	A	B
California	26*	7	2	0	0	2	0
at Washington State	21*	3	1	0	1	1	0
at Northeastern	21*	0	6	0	0	2	1
at Boston College	16	6	5	0	1	1	0
Boise State	14	2	3	0	1	2	0
Utah	15	3	2	1	0	0	0
at Cal Poly	19	13	3	2	0	0	0
at San Jose State	14	7	2	1	1	0	0
at UC Davis	23	10	7	0	0	0	1
Northern Colorado	12	2	1	0	0	1	0
CSUN	14	2	4	0	0	1	0
Loyola Marymount	18	11	5	1	0	0	0
at San Diego	20*	5	3	0	0	0	0
at BYU							
San Francisco							
Portland							
Gonzaga							
at Pacific							
at Pepperdine							
at San Francisco							
Santa Clara							
Pacific							
San Diego							
at Portland							
at Gonzaga							
at Loyola Marymount							
BYU							
Pepperdine							
at Santa Clara							

* - Started game

Career Statistics

Year	GP-GS	Min	FG-FGA	Pct.	3P-3PA	Pct.	FT-FTA	Pct.	Reb	Avg	PF	FO	Ast	TO	Blk	Stl	Pts	Avg
2015-16	32-32	903	121-285	.425	24-55	.436	86-111	.775	195	6.1	51	1	36	64	10	18	352	11.0
2016-17	13-4	233	31-82	.378	5-17	.294	4-8	.500	44	3.4	19	0	10	18	2	4	71	5.5
Total	45-36	1,136	152-367	.414	29-72	.403	90-119	.756	239	5.3	70	1	46	82	12	22	423	9.4



24

Samira McDonald
R-Sr. • G • 5-9
Lacey, Wash.
River Ridge

Season Highs

Points..... N/A
Rebounds..... N/A
Assists N/A
3-Pointers N/A
Steals N/A
Blocks N/A

Career Highs

Points..... 7 (11/23/13 vs. Cal Poly)
Rebounds..... 7 (2 Times)
Assists 8 (2 Times)
3-Pointers 2 (1/23/16 at Portland)
Steals 3 (11/13/15 at CSUN)
Blocks 1 (2/4/16 vs. San Diego)

AS A REDSHIRT SENIOR (2016-17):

- Has yet to play a game this season

CAREER HIGHLIGHTS:

- As a junior in 2015-16, led the team in assists and assists-to-turnover ratio recording a career-high of 8 assists twice against Pacific and LMU
- Played in 29 games and started in 28 of them in 2015-16
- Scored her career-high of 7 points during her freshman year of 2013-14 against Cal Poly

2016-17 Game-by Game

Opponent	Min.	Pts.	Reb.	3-Pt's	S	A	B
California	DNP	-	-	-	-	-	-
at Washington State	DNP	-	-	-	-	-	-
at Northeastern	DNP	-	-	-	-	-	-
at Boston College	DNP	-	-	-	-	-	-
Boise State	DNP	-	-	-	-	-	-
Utah	DNP	-	-	-	-	-	-
at Cal Poly	DNP	-	-	-	-	-	-
at San Jose State	DNP	-	-	-	-	-	-
at UC Davis	DNP	-	-	-	-	-	-
Northern Colorado	DNP	-	-	-	-	-	-
CSUN	DNP	-	-	-	-	-	-
Loyola Marymount	DNP	-	-	-	-	-	-
at San Diego	DNP	-	-	-	-	-	-
at BYU							
San Francisco							
Portland							
Gonzaga							
at Pacific							
at Pepperdine							
at San Francisco							
Santa Clara							
Pacific							
San Diego							
at Portland							
at Gonzaga							
at Loyola Marymount							
BYU							
Pepperdine							
at Santa Clara							

Career Statistics

Year	GP-GS	Min	FG-FGA	Pct.	3P-3PA	Pct.	FT-FTA	Pct.	Reb	Avg	PF	FO	Ast	TO	Blk	Stl	Pts	Avg
2012-13	-	-	-	-	-	-	-	-	-	-	-	-	-	-	-	-	-	-
2013-14	27-1	278	6-32	.188	3-22	.136	6-18	.333	23	0.9	25	0	12	16	0	8	21	0.8
2014-15	29-0	309	6-33	.182	2-16	.125	3-7	.429	23	0.8	14	0	31	29	0	15	17	0.6
2015-16	29-28	704	14-43	.326	8-21	.381	15-23	.652	72	2.5	34	0	96	58	1	21	51	1.8
2016-17	0-0	0	0-0	.000	0-0	.000	0-0	.000	0	0.0	0	0	0	0	0	0	0	0.0
TOTAL	85-29	1,291	26-108	.241	13-59	.220	24-48	.500	118	1.4	73	0	139	103	1	44	89	1.0



25

Megan McKay

So. • F • 6-3
Katanning, Australia
St. Mary's Angelican

Season Highs

Points.....25 (11/25 vs. Boise State)
Rebounds..... 16 (12/19 vs. CSUN)
Assists.....3 (2 Times)
3-Pointers 0
Steals2 (4 Times)
Blocks 2 (12/16 vs. N. Colorado)

Career Highs

Points..... Same
Rebounds..... Same
Assists..... 4 (1/7/16 vs. Loyola Marymount)
3-Pointers 0
Steals3 (2/18/16 vs. Gonzaga)
Blocks3 (3/17/16 vs. Eastern Michigan)

AS A SOPHOMORE (2016-17):

- Tallied up 14 points and 7 rebounds in 21 minutes off the bench in win at Northeastern
- Started her first game of the season against Boise State, recording 25 points and 12 rebounds
- Has team-high four double-doubles this season
- Scored 21 points on 9 for 11 shooting on Dec. 3 at San Jose State in an 85-64 Gaels win

CAREER HIGHLIGHTS:

- In 2015-16, set a Saint Mary's single-season field-goal percentage record at .619
- Scored a then-career-high 18 points in a win at Santa Clara on Fed. 25, 2106
- Tallied a career-high 12 rebounds in an overtime loss to UC Davis on Dec. 3, 2015
- Averaged 7.4 points and almost 6 rebounds including two double-doubles as a freshman

2016-17 Game-by Game

Opponent	Min.	Pts.	Reb.	3-Pt's	S	A	B
California	18	6	3	0	0	2	0
at Washington State	25	10	11	0	1	0	1
at Northeastern	21	14	7	0	2	0	1
at Boston College	30*	10	6	0	0	1	1
Boise State	26*	25	12	0	1	0	0
Utah	31*	15	10	0	2	0	0
at Cal Poly	34*	4	6	0	2	3	1
at San Jose State	24*	21	4	0	0	0	0
at UC Davis	23*	13	11	0	0	2	1
Northern Colorado	26*	8	6	0	1	1	2
CSUN	30*	12	16	0	1	3	0
Loyola Marymount	23*	6	7	0	2	0	0
at San Diego	1	0	0	0	0	0	0
at BYU							
San Francisco							
Portland							
Gonzaga							
at Pacific							
at Pepperdine							
at San Francisco							
Santa Clara							
Pacific							
San Diego							
at Portland							
at Gonzaga							
at Loyola Marymount							
BYU							
Pepperdine							
at Santa Clara							

Career Statistics

Year	GP-GS	Min	FG-FGA	Pct.	3P-3PA	Pct.	FT-FTA	Pct.	Reb	Avg	PF	FO	Ast	TO	Blk	Stl	Pts	Avg
2015-16	32-7	646	96-155	.619	0-1	.000	44-70	.629	189	5.9	65	0	16	58	21	12	236	7.4
2016-17	13-9	312	61-102	.598	0-0	.000	22-38	.579	99	7.6	33	0	12	38	7	12	144	11.1
Total	45-16	958	157-257	.611	0-1	.000	66-108	.611	288	6.4	98	0	28	96	28	24	380	8.4



30

Joy Akaegbu-Cleveland

Fr. • F • 6-2
Spokane, Wash.
Gonzaga Prep

Season Highs

Points.....6 (12/31 at San Diego)
Rebounds.....8 (12/31 at San Diego)
Assists2 (12/31 at San Diego)
3-Pointers 0
Steals1 (2 Times)
Blocks 1 (12/29 vs. Loyola Marymount)

Career Highs

Points..... Same
Rebounds..... Same
Assists..... Same
3-Pointers 0
Steals Same
Blocks Same

AS A FRESHMAN (2016-17):

- Made her collegiate debut at Washington State on 11/13 playing in 6 minutes and pulling down 3 rebounds
- Scored her first career points at San Jose State on Dec. 3, finishing with 5 points & 2 rebounds
- Played 2 minutes at Northeastern, grabbing 1 rebound
- Also played against Utah at home, grabbing another single rebound

CAREER HIGHLIGHTS:

- Helped her undefeated Gonzaga Prep team (27-0) to their second straight Washington 4A State Championship

2016-17 Game-by Game

Opponent	Min.	Pts.	Reb.	3-Pt's	S	A	B
California	DNP	-	-	-	-	-	-
at Washington State	6	0	3	0	0	0	0
at Northeastern	2	0	1	0	0	0	0
at Boston College	DNP	-	-	-	-	-	-
Boise State	DNP	-	-	-	-	-	-
Utah	2	0	1	0	0	0	0
at Cal Poly	DNP	-	-	-	-	-	-
at San Jose State	6	5	2	0	0	0	0
at UC Davis	DNP	-	-	-	-	-	-
Northern Colorado	DNP	-	-	-	-	-	-
CSUN	DNP	-	-	-	-	-	-
Loyola Marymount	7	3	0	0	1	0	1
at San Diego	20	6	8	0	1	2	0
at BYU							
San Francisco							
Portland							
Gonzaga							
at Pacific							
at Pepperdine							
at San Francisco							
Santa Clara							
Pacific							
San Diego							
at Portland							
at Gonzaga							
at Loyola Marymount							
BYU							
Pepperdine							
at Santa Clara							

Career Statistics

Year	GP-GS	Min	FG-FGA	Pct.	FG-FGA	Pct.	FT-FTA	Pct.	Reb	Avg	PF	FO	Ast	TO	Blk	Stl	Pts	Avg
2016-17	6-0	43/7.2	6-12	.500	0-0	.000	2-3	.667	15	2.5	4	0	2	3	1	2	14	2.3
Total	6-0	43/7.2	6-12	.500	0-0	.000	2-3	.667	15	2.5	4	0	2	3	1	2	14	2.3



2016-17 Category Leaders

Points	G	Pts	Pts/G
Stella Beck	13	180	13.8
Sydney Raggio	13	151	11.6
Megan McKay	13	144	11.1

FG Percentage	FG	Att	Pct
Megan McKay	61	102	.598
Stella Beck	66	120	.550
Tyra Moe	6	11	.545

3-Point Percentage	3FG	Att	Pct
Sydney Raggio	4	6	.667
Devyn Galland	23	56	.411
Carly Turner	21	55	.382

Free Throw Percentage	FG	Att	Pct
Katie Rathbun	2	2	1.000
Devyn Galland	23	27	.852
Carly Turner	12	15	.800

Free Throw Attempts	G	Att	Att/G
Stella Beck	13	64	4.9
Shannon Mauldin	13	42	3.2
Megan McKay	13	38	2.9

Rebounds Average	G	Reb	Avg/G
Megan McKay	13	99	7.6
Sydney Raggio	13	97	7.5
Carly Turner	13	73	5.6

Fouls	G	NO.	Per/G
Stella Beck	13	37	2.8
Megan McKay	13	33	2.5

Foulsouts	G	NO.
Devyn Galland	13	1
Carly Turner	13	1
Stella Beck	13	1

Blocked Shots	G	NO.	Blk/G
Carly Turner	13	12	0.9
Sydney Raggio	13	10	0.8
Megan McKay	13	7	0.5

Minutes	G	NO.	Min/G
Stella Beck	13	399	30.7
Carly Turner	13	373	28.7
Devyn Galland	13	370	28.5

Scoring Average	G	Pts	Avg/G
Stella Beck	13	180	13.8
Sydney Raggio	13	151	11.6
Megan McKay	13	144	11.1

Field Goal Attempts	G	Att	Att/G
Sydney Raggio	13	133	10.2
Carly Turner	13	121	9.3
Stella Beck	13	120	9.2

Field Goals Made	G	Made	Made/G
Sydney Raggio	13	68	5.2
Stella Beck	13	66	5.1
Megan McKay	13	61	4.7

3-Point FG Attempts	G	Att	Att/G
Devyn Galland	13	56	4.3
Carly Turner	13	55	4.2
Devon Brookshire	13	17	1.3

3-Point FG Made	G	Made	Made/G
Devyn Galland	13	23	1.8
Carly Turner	13	21	1.6
Devon Brookshire	13	5	0.4

Rebounds	G	Reb	Reb/G
Megan McKay	13	99	7.6
Sydney Raggio	13	97	7.5
Carly Turner	13	73	5.6

Offensive Rebounds	G	NO.	Avg/G
Megan McKay	13	38	2.9
Sydney Raggio	13	30	2.3
Stella Beck	13	30	2.3

Defensive Rebounds	G	NO.	Avg/G
Sydney Raggio	13	67	5.2
Megan McKay	13	61	4.7
Carly Turner	13	56	4.3

Assists	G	NO.	Ast/G
Stella Beck	13	48	3.7
Carly Turner	13	38	2.9
Devyn Galland	13	30	2.3

Steals	G	NO.	Stl/G
Stella Beck	13	16	1.2
Carly Turner	13	13	1.0
Shannon Mauldin	13	12	0.9

Turnovers	G	NO.	To/G
Stella Beck	13	44	3.4
Megan McKay	13	38	2.9
Carly Turner	13	34	2.6





2016-17 Team Game Highs

Points	85	at San Jose State (12/03/16)
	79	at Cal Poly (12/01/16)
	78	BOISE STATE (11/25/16)
	77	at Northeastern (11/18/16)
	74	LOYOLA MARYMOUNT (12/29/16)
Field Goals Made	35	at San Jose State (12/03/16)
	29	at UC Davis (12/11/16)
Field Goal Attempts	67	at UC Davis (12/11/16)
	67	BOISE STATE (11/25/16)
	65	UNIVERSITY OF UTAH (11/26/16)
Field Goal Percentage	.603 (35-58)	at San Jose State (12/03/16)
	.537 (29-54)	at Northeastern (11/18/16)
3 PT Field Goals Made	7	LOYOLA MARYMOUNT (12/29/16)
	7	at Cal Poly (12/01/16)
	7	at San Jose State (12/03/16)
3 PT Field Goals Attempted	5	NORTHERN COLORADO (12/16/16)
	20	CALIFORNIA (11/11/16)
3 PT Field Goal Percentage	17	at San Jose State (12/03/16)
	.556 (5-9)	NORTHERN COLORADO (12/16/16)
Free Throws Made	.429 (6-14)	at Washington State (11/13/16)
	22	at Cal Poly (12/01/16)
	15	at Washington State (11/13/16)
Free Throws Attempted	28	LOYOLA MARYMOUNT (12/29/16)
	26	BOISE STATE (11/25/16)
Free Throw Percentage	.833 (15-18)	at Northeastern (11/18/16)
	.833 (15-18)	at Washington State (11/13/16)
	.800 (12-15)	CALIFORNIA (11/11/16)
Rebounds	49	CSUN (12/19/16)
	49	at San Jose State (12/03/16)
	45	at Northeastern (11/18/16)
	45	LOYOLA MARYMOUNT (12/29/16)
	45	NORTHERN COLORADO (12/16/16)
	44	at Cal Poly (12/01/16)
	44	BOISE STATE (11/25/16)
	44	at UC Davis (12/11/16)
	41	UNIVERSITY OF UTAH (11/26/16)
	41	at Washington State (11/13/16)
Assists	34	CALIFORNIA (11/11/16)
	26	at San Jose State (12/03/16)
Steals	17	NORTHERN COLORADO (12/16/16)
	11	UNIVERSITY OF UTAH (11/26/16)
Blocked Shots	7	at Cal Poly (12/01/16)
	6	at University of San Diego (12/31/16)
Turnovers	4	at Northeastern (11/18/16)
	25	at San Jose State (12/03/16)
Fouls	23	at Cal Poly (12/01/16)
	21	UNIVERSITY OF UTAH (11/26/16)
	21	at University of San Diego (12/31/16)
	21	CSUN (12/19/16)