



UTAH STATE

2016-17 WOMEN'S BASKETBALL

Games 9 & 10

Utah Valley & BYU

2016-17 SCHEDULE

Overall: 6-2 MW: 0-0

Home: 4-1 Away: 1-1 Neutral: 1-0

Date	Opponent	Time/Result
11/6	COLORADO STATE-PUEBLO ^{AW}	63-54
11/11	WESTMINSTER	W, 72-49
11/14	MONTANA STATE	W, 64-56
11/17	UC IRVINE	W, 66-52
11/22	SOUTHERN UTAH	L, 54-70
11/25	vs. Incarnate Word #	W, 79-46
11/27	at Montana #	W, 65-47
12/1	IDAHO STATE	W, 69-56
12/3	at Utah	L, 58-65
12/15	UTAH VALLEY	7 p.m.
12/17	BYU	2 p.m.
12/21	at Arizona	6 p.m.
12/29	at Boise State *	7 p.m.
12/31	AIR FORCE *	2 p.m.
1/4	at New Mexico *	7 p.m.
1/7	at UNLV *	5 p.m.
1/11	WYOMING *	7 p.m.
1/14	SAN DIEGO STATE *	2 p.m.
1/21	at Colorado State *	2 p.m.
1/25	NEW MEXICO *	7 p.m.
1/28	at Fresno State *	3 p.m.
2/1	at Nevada *	7:30 p.m.
2/4	BOISE STATE *	2 p.m.
2/8	COLORADO STATE *	7 p.m.
2/11	at Wyoming *	2 p.m.
2/15	at San Diego State *	7:30 p.m.
2/18	NEVADA *	2 p.m.
2/22	SAN JOSÉ STATE *	7 p.m.
2/25	at Air Force	2 p.m.
2/28	UNLV *	7 p.m.

MOUNTAIN WEST TOURNAMENT Las Vegas, Nev. - March 6-10

3/6	First Round	TBA
3/7	Quarterfinals	TBA
3/8	Semifinals	TBA
3/10	Championship	TBA

Home games in **BOLD**

[^] Exhibition

Lady Griz Classic (Missoula, Mont.)

* Mountain West game

- All times Mountain



Utah State vs. Utah Valley



TEAM INFORMATION

Location	Orem, Utah
Enrollment	34,978
Conference	Western Athletic
2016-17 Record	3-8, 0-0 WAC
2015-16 Record	16-15, 8-6 WAC
Head Coach	Cathy Nixon
School Record/Years	349-297 / 22
Career Record/Years	Same

TEAM LEADERS

Points	Mariah Seals, (Jr., G), 14.1 ppg
Rebounds	Sam Lubcke, (Jr., C), 7.0 rpg
Assists	Mariah Seals, (Jr., G), 5.2 apg
Blocks	Sam Lubcke, (Jr., C), 0.6 bpg
Steals	Taylor Gordon, (Jr., G), 3.5 spg

THE GAME

Date	Dec. 15, 2016
Time	7 p.m. (MT)
Location	Logan, Utah
Arena	Dee Glen
	Smith Spectrum
Broadcast	MWVN
Radio	107.7 FM

THE SERIES

All-Time	USU leads, 7-3
First Meeting	11/23/04
In Logan	USU leads, 4-1
In Orem	USU leads, 3-2
Current Win Streak	USU, 2
Last Meeting	12/10/15

Utah State vs. BYU



TEAM INFORMATION

Location	Provo, Utah
Enrollment	30,243
Conference	West Coast
2016-17 Record	5-4, 0-0 WCC
2015-16 Record	26-7, 16-2 WCC
Head Coach	Jeff Judkins
School Record/Years	336-154 / 16
Career Record/Years	Same

RETURNING TEAM LEADERS

Points	Cassie Broadhead, (Jr., G), 15.2 ppg
Rebounds	Kalani Purcell (Sr., F), 8.9 rpg
Assists	Kalani Purcell (Sr., F), 4.4 apg
Blocks	Cassie Broadhead, (Jr., G), 1.3 bpg
Steals	Kalani Purcell (Sr., F), 2.2 spg

THE GAME

Date	Dec. 17, 2016
Time	2 p.m. (MT)
Location	Logan, Utah
Arena	Dee Glen
	Smith Spectrum
Broadcast	MWVN
Radio	107.7 FM

THE SERIES

All-Time	BYU leads, 34-3
First Meeting	1/18/74
In Logan	BYU leads, 12-2
In Provo	BYU leads, 18-1
Neutral	BYU leads, 4-0
Current Win Streak	BYU, 27
Last Meeting	11/24/15

THIS WEEK'S TIP-OFF

Utah State women's basketball (6-2) returns to the Dee Glen Smith Spectrum this week for a pair of in-state games. The Aggies host Utah Valley (3-8) on Thursday, Dec. 15, at 7 p.m., followed by a 2 p.m. meeting against BYU (5-4) on Saturday, Dec. 17.

FOLLOWING THE AGGIES

All regular-season home and Mountain West games will continue to be broadcast as a USU Athletics Production on the Mountain West Network. Live stats and play-by-play information will be available through GameTracker, while updates will also be provided through the team's social media outlets. Utah State women's basketball games are also broadcast on the radio through KVNU. Games will be played on 107.7 FM in Cache Valley with Craig Hislop on the call. Links to each option will be available online prior to every game. Saturday's game at Utah will be streamed online through Utah Live Stream and the Pac-12 conference.

FOLLOW THE AGGIES



/USUWBB



@USUWBasketball



@UtahStateWBB

Utah State Athletic Media Relations - Megan Allen, Asst. Media Relations Coordinator

Office: (435) 797-5547

Cell: (435) 232-9112

Email: megan.allen@usu.edu

utahstateaggies.com

UTAH STATE QUICK FACTS

Location	Logan, Utah
Nickname	Aggies
Colors	Navy Blue, White, Pewter Grey
Conference.....	Mountain West
Founded	1888
Enrollment	27,622
President	Stan Albrecht
VP & Athletics Director.....	John Hartwell
Arena.....	Dee Glen Smith Spectrum
Capacity	10,270
Program Record	315-455
Home Record	160-155*
Road Record	111-247*
Neutral Record	16-36*
*information from 1972-73 seasons unavailable	
2016-17 Record	6-2, 0-0 MW
2015-16 Record	14-17, 8-10 MW
Starters Returning/Lost.....	2/3
Letterwinners Returning/Lost	8/6
Newcomers.....	6

BASKETBALL STAFF

Head Coach.....	Jerry Finkbeiner
	Fifth year
	Southern Nazarene, '80
Overall Record.....	535-314 (28th year)
Utah State Record.....	61-72 (Fifth year)
Assistant Coach	Ben Finkbeiner (Third year)
Assistant Coach	JC Carter (Third year)
Assistant Coach.....	Kelsie Kruger (First year)
Dir. of Ops.....	Brooke Jackson (First year)
Office Phone	(435) 797-8156

MEDIA RELATIONS

Associate Athletics Director for	
Media Relations	Doug Hoffman
Assistant Athletics Director for	
Communications	Kyle Cottam
Assistant Media Relations	
Coordinator (WBB Contact) ...	Megan Allen
Office Phone	(435) 797-5547
Cell Phone	(435) 232-9112
E-mail	megan.allen@usu.edu
Assistant Media Relations	
Coordinator	Wade Denniston
Media Relations Fax	(435) 797-2615
Courtside Phone.....	(435) 797-3443
Website.....	UtahStateAggies.com
Mailing Address.....	7400 Old Main Hill
	Logan, Utah 84322-7400

HOLIDAY CHEER

For both home games this weekend, Utah State Athletics is sponsoring a holiday toy drive. Fans who bring a new, unwrapped toy to donate will receive \$1 admission to the game.

SCOUTING THE WOLVERINES

Utah Valley comes to Logan for its only game of the week with a 3-8 record. The Wolverines are on a two-game winning streak, having defeated Southern Utah on the road (70-64) and Denver at home (72-58).

Utah Valley returns two starters and six total letterwinners from last season's squad that went 16-15 overall and 8-6 in Western Athletic Conference play. Junior guard Mariah Seals leads the Wolverine offense, averaging 14.1 points per game. Junior forward Sam Lubcke is tops defensively, averaging 7.0 rebounds per game. As a team, Utah Valley is shooting 39.3 percent (234-of-596) from the field, 33.8 percent (71-of-210) from the 3-point line and 67.0 percent (132-of-197) from the free throw line. The Wolverines are averaging 61.0 points per game, while allowing an average of 71.4 points from its opponents. Cathy Nixon has spent the entirety of her 22-year head coaching career at Utah Valley, where she has compiled an overall record of 349-297.

Utah State leads the all-time series against the Wolverines, 7-3, including a 4-1 advantage in games played in Logan. The Aggies have won the last two meetings against Utah Valley, including a 76-72 victory in Orem last season.

SCOUTING THE COUGARS

Like the Wolverines, BYU plays just the Aggies this week. The Cougars make the trip to Logan with a 5-4 record. BYU's last game was at Utah, where the Cougars fell to the Utes, 77-60. This season, BYU has posted wins over Utah Valley (68-50), St. Joseph's (71-56), Tulsa (71-56), UNLV (63-54) and Weber State (73-64).

BYU returns three starters from last year, when the team went 26-7 overall and 16-2 in West Coast Conference play. The Cougars won the WCC title, advancing to the NCAA Tournament, where they fell to Missouri in the first round. Junior guard Cassie Broadhead leads the Cougars offensively, averaging 15.2 points per game. BYU has three players averaging double-digit scoring games. Senior forward Kalani Purcell is the top rebounder for the Cougars, averaging 8.9 boards per game. Overall, BYU is shooting 41.1 percent (206-of-501) from the floor, 28.3 percent (47-of-166) from the 3-point line and 65.0 percent (115-of-177) from the free throw line. Jeff Judkins is in his 16th season as the head coach at BYU, where he has an overall record of 336-154.

The series against BYU dates back to the 1973-74 season, spanning nearly the entire history of the Aggie women's basketball program. The teams spent time in two of the same conferences, playing each other in the Intermountain Athletic Conference and the High Country Athletic Conference. BYU leads the series, 34-3, having won the last 27 meetings. Utah State won the first two meetings in 1974, and has not defeated the Cougars since Dec. 7, 1978.

THEY COME FROM THE LAND DOWN UNDER

Between the three teams competing this weekend, there are six players from Australia and another three from New Zealand. The Aggies have four Australian players on their roster in **Rachel Brewster** (Melbourne, Victoria/Rowville Secondary College), **Shannon Dufficy** (Preston, Victoria/Our Lady of Mercy College), **Eliza West** (Mount Martha, Victoria/The Peninsula School) and **Olivia West** (Launceston, Tasmania/Templestowe College). Utah Valley has two Australia natives on its roster in Sariah Wi Neera (Hastings, Victoria/Helensvale State HS) and Sam Lubcke (Murray Bridge, South Australia/Unity College). BYU has the New Zealand ties with Kalani Purcell (Hamilton/John Paul High School), Shalae Salmon (Porirua/Wellington Girls College) and Khaedin Taito (Hastings/Palm Beach Currumbin).

AGGIES AGAINST THE STATE

This week's games are the fourth and fifth of five games the Aggies will play against in-state opponents this season. USU opened the season in a 72-49 home win over Westminster and fell to Southern Utah at home, 70-54. Last week, the Aggies fell to Utah, 65-58, in the only in-state road game of the season. Additionally, the Aggies played an unofficial closed pre-season scrimmage against Weber State. All-time, Utah State is 38-96 against in-state opponents. The Aggies lead the all-time series against Utah Valley (7-3), Westminster (3-0) and Southern Utah (5-3), while trailing against BYU (3-34), Dixie State (0-1), Weber State (16-23) and Utah (4-32).

LONG-TIME FOES

Through program history, BYU is one of Utah State's most-faced opponents. The Aggies and Cougars have met on the court 37 times, with BYU holding the series advantage, 34-3. Weber State is Utah State's most-played opponent with 39 past meetings. After BYU, the Aggies' longest-running series include 35 meetings against New Mexico State and 30 against Boise State.

START 'EM YOUNG

With three freshmen and two sophomores in the current starting five, Utah State currently has the youngest starting lineup in the country. USU is one of four NCAA teams that has three freshmen in its starting corps right now, joining Air Force, Maine and UAB. Joining the freshmen, UAB starts one sophomore and a junior, Maine has a sophomore and a senior and Air Force adds two juniors. This is the second season in a row that the Utah State has utilized its youth, starting two freshmen, two sophomores and a senior for the majority of its games in the 2015-16 season.

HOLDING STRONG

The Utah State defense has performed particularly well this season, holding opposing teams to the lowest field goal and 3-point field goal percentages in the Mountain West. On the year, the Aggies have forced teams to shoot 34.2 percent (153-of-448) from the floor, including just 27.6 percent (43-of-156) from behind the arc. Additionally, Utah State is ranked second in the league in both blocks and steals, averaging 6.8 and 10.4 per game, respectively.

TELL ME ABOUT THAT RPI

The first RPI and strength of schedule rankings were released this week, including games played through Dec. 11. As a conference, the Mountain West is ranked ninth on both lists. As a team, Utah State is ranked 189th in RPI and 183rd on the strength of schedule list. The SOS ranking is the fifth-highest of any Mountain West program, while the RPI ranking is sixth among conference opponents.

SULTANS OF SWAT

The Utah State defense continues to have a dominant performance this season. The Aggies lead the Mountain West in blocks, averaging 6.8 per game as a team. Individually, four USU players are ranked in the top-15 among conference players. Sophomore center **Deja Mason** ranks second, averaging 2.4 per game. Behind her, freshman forward **Dee Moore** and senior forward **Antoina Robinson** are tied for seventh, averaging 1.1 per game, while freshman guard **Hailey Bassett** is 11th with 0.9 blocks per game. In the game against UC Irvine, the Aggies tallied 13 blocks, just one shy of tying the program record for blocks in a single game. Robinson had a career-high four blocks against the Anteaters, while Mason has had two four-block games, doing so against Montana State and at Montana.

PRESEASON EXPECTATIONS

Utah State women's basketball was picked ninth in the Mountain West women's basketball preseason poll as voted on by a panel of the league's 11 head coaches and media representatives. Colorado State, the 2015-16 regular-season and tournament champion, was picked to finish first in the conference with 283 points, including 17 first-place votes. Boise State was tabbed second with 271 total points and 11 first-place votes, while Fresno State, came in third with 225 points. UNLV was selected fourth with 201 points, followed by San José State (197 points) and New Mexico (176 points). San Diego State was slated seventh (126 points), with Wyoming coming in eighth (123 points). The Aggies held the ninth-place spot with 97 points. Nevada (66 points) and Air Force (28 points) rounded out the poll in 10th and 11th, respectively.

NO PLACE LIKE HOME

Utah State is set to play seven of its 11 non-conference games in the friendly confines of the Dee Glen Smith Spectrum this season. This is the most home games the Aggies have had in the preseason schedule in head coach **Jerry Finkbeiner's** tenure. It also marks the most home games in non-conference play since the 2011-12 season, when USU also had seven home contests during the preseason. The Aggies opened the season with a five-game homestand, not playing a road game until Thanksgiving weekend at the Montana-hosted Lady Griz Classic.

UP NEXT

Utah State will wrap up the non-conference portion of its season on the road next week. The Aggies play at Arizona (6-1) on Wednesday, Dec. 21. The game is the first of a scheduled home-and-home series, with the Wildcats coming to Logan in the 2017-18 season.

MEDIA CREDENTIALS

Credentials for Utah State home women's basketball games will be issued through the Utah State Athletic Media Relations Office for working press only. We urge all members of the media to send their credential requests to Megan Allen, Assistant Media Relations Coordinator well in advance to ensure the availability of credentials. If desired, credentials can be left at the Will Call booth at the main entrance of the Dee Glen Smith Spectrum.

GAME DAY SERVICES

The Utah State University Athletic Media Relations Office provides pregame notes, statistics and scorecards prior to each home game. A complete box score will be available approximately five minutes after the conclusion of each game. Power outlets are located throughout the main working area of press row. Those members of the media with special utility needs should contact the USU Athletic Media Relations Office well in advance in order to complete the arrangements. A courtesy telephone line is available for "official" visiting radio crews on a reciprocal basis. All other stations requesting broadcast space must pay a rights fee to the Utah State University Athletics Department.

MEDIA INFORMATION

Practices are held daily from approximately 3-6 p.m. at the Dee Glen Smith Spectrum. Practice is generally open to the media, but media personnel wishing to attend workouts need to contact Megan Allen at 435-797-5547 or megan.allen@usu.edu, prior to practice.

RADIO INFORMATION

All Utah State women's basketball games can be heard live on 107.7 KLZX in Logan and on the USU website at www.UtahStateAggies.com with Craig Hislop calling the play-by-play.

DIRECTIONS TO LOGAN

Logan, Utah is home to Utah State University and is located approximately 80 miles north of Salt Lake City, Utah. From Salt Lake International Airport: Take I-80 East out of the airport to 215 North, which will run into I-15 North. Follow I-15 North to exit 362 (Highway 89-91) at Brigham City. Follow Highway 89 into Logan, where it becomes Main Street. Stay on Main Street until you reach 1000 North and turn right. Follow 1000 North east until it runs into the campus.

AROUND THE LEAGUE



CURRENT STANDINGS

	Conference			Overall		
	W	L	Pct.	W	L	Pct.
Boise State	0	0	.000	8	1	.889
UNLV	0	0	.000	8	1	.889
UTAH STATE	0	0	.000	6	2	.750
Fresno State	0	0	.000	6	3	.667
Wyoming	0	0	.000	6	3	.667
Colorado State	0	0	.000	6	4	.600
Nevada	0	0	.000	4	5	.444
New Mexico	0	0	.000	4	5	.444
San Diego State	0	0	.000	3	6	.333
Air Force	0	0	.000	2	7	.222
San José State	0	0	.000	2	9	.182

THIS WEEK

Thursday, December 15
Utah Valley at UTAH STATE 7 p.m.

Friday, December 16
UC Santa Barbara at FRESNO STATE 8 p.m.

Saturday, December 17
BYU at UTAH STATE 2 p.m.

- all times Mountain

RECENT RESULTS

Monday, December 12
UNLV 62, UC Irvine 46

Sunday, December 11
South Dakota 84, SAN JOSÉ STATE 69
COLORADO STATE 96, New Mexico Highlands 31
NEW MEXICO 79, UTEP 66
11/11 Washington 92, BOISE STATE 66
SAN DIEGO STATE 84, UC Santa Barbara 70

Saturday, December 10
San Diego 70, NEVADA 54
Northern Colorado 71, AIR FORCE 44
FRESNO STATE 74, Pacific 67

Friday, December 9
Michigan 92, SAN DIEGO STATE 57
UNLV 68, Pepperdine 61
Idaho 74, WYOMING 71
Nebraska 83, SAN JOSÉ STATE 61

PRESEASON POLL

Rk.	Team (First-Place Votes)	Points
1	Colorado State (17)	283
2	Boise State (11)	271
3	Fresno State	225
4	UNLV	201
5	San José State	197
6	New Mexico (1)	176
7	San Diego State	126
8	Wyoming	123
9	UTAH STATE	97
10	Nevada	66
11	Air Force	28

PROBABLE AGGIE STARTERS



1	2	22	5	44
Eliza West	Jessie Geer	Rachel Brewster	Shannon Dufficy	Deja Mason
5-5 • Freshman Mount Martha, Aust.	5-8 • Freshman Gillette, Wyo.	5-11 • Sophomore Melbourne, Aust.	6-2 • Freshman Preston, Aust.	6-4 • Sophomore San Antonio, Texas

Points	8.3	Points	6.4	Points	13.9	Points	8.6	Points	3.5
Rebounds	3.0	Rebounds	2.5	Rebounds	3.4	Rebounds	8.6	Rebounds	5.3
FG%	.391	FG%	.400	FG%	.461	FG%	.407	FG%	.345
3FG%	.333	3FG%	.296	3FG%	.471	3FG%	.400	3FG%	.000
FT%	.625	FT%	.750	FT%	.818	FT%	.571	FT%	.667

STARTER NOTES

FRESHMAN GUARD ELIZA WEST – Averaging 9.7 points over her last three games... Leads the team and the Mountain West in steals, averaging 2.4 per game... Made her collegiate debut and first-career start against Westminster (Nov. 11)... Recorded 10 points, six rebounds, three assists and four steals in her first-career game... Named MVP of the Lady Griz Classic... Shot 50.0 percent (12-of-24) from the field while averaging 12.0 points and not committing any turnovers through the two games of the tournament... Scored a career-best 18 points against Montana (Nov. 27)... Was named the USU Student-Athlete of the Week for the week ending Sunday, Nov. 27... Has scored in double-digits three times this season... Averaging 8.3 points, 3.0 rebounds and 3.7 assists per game... Shooting 39.1 percent (25-of-64) from the field, 33.3 percent (6-of-18) from the 3-point line and 62.5 percent (10-of-16) from the free throw line.

FRESHMAN GUARD JESSIE GEER – Made her collegiate debut against Westminster (Nov. 11)... Recorded five points, two assists and two steals in her first-career game... Made her first-career start against Incarnate Word (Nov. 25)... Had the best game of her young career against UC Irvine (Nov. 17) with nine points, seven assists and four steals... Has scored a career-best nine points twice against UC Irvine and Montana (Nov. 27)... Has had a career-best four rebounds in three games... Averaging 6.4 points and 2.5 rebounds per game... Shooting 40.0 percent (20-of-50) from the field, 29.6 percent (8-of-27) from behind the arc and 75.0 percent (3-of-4) from the free throw line.

SOPHOMORE GUARD RACHEL BREWSTER – Leads the team in scoring, averaging 13.9 points per game... Averaging 14.3 points over her last four games... Has scored in double-figures six times this season and 20 times in her career... Scored a career-high 22 points against Idaho State (Dec. 1), the second 20-point game of her career... Has had a season-best five rebounds twice against UC Irvine (Nov. 17) and at Utah (Dec. 3)... Was named to the all-tournament team at the Lady Griz Classic... Averaging 13.9 points and 3.4 rebounds per game... Shooting 46.1 percent (47-of-102) from the field, 47.1 percent (8-of-17) from the 3-point line and 81.8 percent (9-of-11) from the free throw line.

FRESHMAN FORWARD SHANNON DUFFICY – Leads the team in rebounding, averaging 8.6 boards per game... Averaging 7.8 points and 8.5 rebounds over her last four games... Made her collegiate debut and first-career start against Westminster (Nov. 11)... Was one rebound shy of a double-double against the Griffins with 14 points and nine boards... Has scored in double-digits three times this year... Recorded 14 rebounds twice against Montana State (Nov. 14) and Montana (Nov. 27), the most by a USU freshman since the reinstatement of the program... Was named to the all-tournament team at the Lady Griz Classic... Averaging 8.6 points and 8.6 rebounds per game... Shooting 40.7 percent (24-of-59) from the field, 40.0 percent (4-of-10) from the 3-point line and 57.1 percent (8-of-14) from the free throw line.

SOPHOMORE CENTER DEJA MASON – Averaging 5.3 points and 4.7 rebounds over

her last four games... Leads the team in blocks with 19 on the season, averaging 2.4 per game... Had four blocks against both Montana State (Nov. 14) and Montana (Nov. 27)... Scored a season-high seven points against Montana State... Had a season-best eight rebounds against Incarnate Word (Nov. 25)... Had a career-high two steals at Montana... Averaging 3.5 points and 5.3 rebounds per game... Shooting 34.5 percent (10-of-29) from the field and 66.7 percent (8-of-12) from the free throw line.

THE AGGIE BENCH

No.	Name	Pos.	Ht.	Year	Hometown/High School/Last College
3	Olivia West	G	5-6	Fr.	Launceston, Tasmania, Australia (Templestowe College)
11	Lindsey Jensen	G	5-9	So.	Smithfield, Utah (Sky View HS)
12	Hailey Bassett	G/F	6-2	Fr.	Layton, Utah (Layton HS)
21	Victoria Price	G	5-8	So.	Grand Prairie, Texas (South Grand Prairie HS)
30	Dee Moore	F	6-4	Fr.	Allen, Texas (Allen HS)
31	Katie Toole	G	5-10	So.	Farmington, Utah (Viewmont HS)
32	Taylor Enders	G	5-10	So.	West Linn, Ore. (West Linn HS)
35	Angelica de Paulo	F	6-2	Sr.	São Paulo, Brazil (Escola Estadual Doutour Jose Fornari/New Mexico JC)
41	Antoina Robinson	F	6-2	Sr.	Dallas, Texas (Duncanville HS/New Mexico JC)

BENCH PLAYER NOTES

FRESHMAN GUARD OLIVIA WEST – Made her collegiate debut against Westminster (Nov. 11)... Had a career-best four rebounds against the Griffins... Scored a career-high 15 points against Idaho State (Dec. 1)... Averaging 7.1 points and 1.1 rebounds per game... Shooting 42.0 percent (21-of-50) from the field, 47.6 percent (10-of-21) from the 3-point line and 62.5 percent (5-of-8) from the free throw line.

FRESHMAN GUARD/FORWARD HAILEY BASSETT – Made her collegiate debut against Westminster (Nov. 11)... Scored five points and added seven rebounds in her first appearance as an Aggie... Has scored a career-high six points twice against Incarnate Word (Nov. 25) and at Utah (Dec. 3)... Made her first-career start against UC Irvine (Nov. 17)... Had a career-best six rebounds against the Anteaters... Averaging 4.9 points and 4.0 rebounds per game... Shooting 37.8 percent (14-of-37) from the field, 33.3 percent (2-of-6) from the 3-point line and 75.0 percent (9-of-12) from the free throw line.

FRESHMAN FORWARD DEE MOORE – Made her collegiate debut against Westminster (Nov. 11)... Recorded two points, two rebounds and one assist in the first game of her career... Had two blocks against Montana State (Nov. 14)... Scored a career-best six points against UC Irvine (Nov. 17) and Incarnate Word (Nov. 25)... Had a career-high six rebounds against Idaho State (Dec. 1)... Averaging 3.1 points and 2.3 rebounds per game... Shooting 50.0 percent (10-of-20) from the field and 83.3 percent (5-of-6) from the free throw line.

SOPHOMORE GUARD KATIE TOOLE – Started the first four games of the season... Had her first double-figure game of the season and ninth of her career with 11 points against UC Irvine (Nov. 17)... Averaging 4.4 points and 2.3 rebounds per game... Shooting 48.4 percent (15-of-31) from the field, 33.3 percent (1-of-3) from the 3-point line and 66.7 percent (4-of-6) from the free throw line.

SOPHOMORE GUARD LIZZY KLINKER – Recorded a career-high six points against Westminster (Nov. 11)... Had several career-highs against Montana State (Nov. 14) with three steals and 17 minutes played... Had a career-high four assists against Incarnate Word (Nov. 25)... Averaging 2.3 points and 1.9 rebounds per game... Shooting 31.6 percent (6-of-19) from the field and 60.0 percent (6-of-10) from the free throw line.

SENIOR FORWARD ANTOINA ROBINSON – Averaging 4.7 rebounds over her last three games... Scored a season-high eight points against UC Irvine (Nov. 17)... Also recorded a career-high four blocks against the Anteaters... Had a season-best seven rebounds against Montana State (Nov. 14)... Averaging 4.5 points and 5.0 rebounds per game... Shooting 30.4 percent (14-of-46) from the field and 69.2 percent (9-of-13) from the free throw line.

2016-17 MOUNTAIN WEST STATISTICS

As of Dec. 12, 2016

TEAM	All	Conference Only
Scoring	6th (65.9).....	NA
Scoring Defense	3rd (55.1).....	NA
Scoring Margin	4th (+10.8).....	NA
Field Goal %	5th (.406).....	NA
Field Goal % Def	1st (.342).....	NA
Free Throw %	7th (.679).....	NA
3-Pt. Field Goal %	2nd (.371).....	NA
3-Pt. Field Goal % Def..	1st (.276).....	NA
Rebounding.....	4th (40.1).....	NA
Rebound Margin	6th (+0.9).....	NA
Assists	3rd (15.8).....	NA
Steals	2nd (10.4).....	NA
Blocks	2nd (6.8).....	NA
Turnover Margin.....	2nd (+4.0).....	NA
Assist/Turnover.....	4th (1.0).....	NA

INDIVIDUAL	All	Conference Only
Scoring		
Rachel Brewster.....	9th (13.9 ppg).....	NA

Rebounding		
Shannon Dufficy.....	4th (8.6 rpg).....	NA

Assists		
Eliza West.....	6th (4.1 apg).....	NA
Shannon Dufficy.....	13th (3.1 apg).....	NA

Field Goal Percentage		
Rachel Brewster.....	13th (.461).....	NA

3-Point Field Goal Percentage		
Olivia West.....	2nd (.476).....	NA
Rachel Brewster.....	4th (.471).....	NA

Steals		
Eliza West.....	1st (2.4 spg).....	NA
Jessie Geer.....	11th (1.8 spg).....	NA
Shannon Dufficy.....	13th (1.7 spg).....	NA

Assist-Turnover Ratio		
Eliza West.....	6th (1.5).....	NA
Shannon Dufficy.....	9th (1.2).....	NA

Blocks		
Deja Mason.....	2nd (2.4 bpg).....	NA
Dee Moore.....	T-7th (1.1 bpg).....	NA
Antoina Robinson...	T-7th (1.1 bpg).....	NA
Hailey Bassett.....	11th (0.9 bpg).....	NA

Offensive Rebounds		
Shannon Dufficy.....	5th (3.6 rpg).....	NA

Defensive Rebounds		
Shannon Dufficy.....	9th (5.0 rpg).....	NA

Minutes Played		
Eliza West.....	14th (29.7 mpg).....	NA
Shannon Dufficy.....	27th (27.3 mpg).....	NA

THE LAST TIME OUT

Utah 65, Utah State 58 December 3, 2016

Utah State 69, Idaho State 56 December 1, 2016

Official Basketball Box Score -- Game Totals -- Final Statistics
Utah State vs Utah
12/03/16 2 p.m. MT at Salt Lake City (Huntsman Center)

##	Player	Total	3-Ptr			Rebounds		PF	TP	A	To	Bk	Stl	Min
			FG	FGA	FG%	FT	FTA							
00	DUFFICY, Shannon	15	12	13	0.0	2	1	3	0	11	5	3	1	30
01	ROBINSON, Antoina	7	2	5	0.0	3	3	7	0	0	0	1	20	
02	WEST, Eliza	9	6	9	0.2	1	2	1	9	4	8	0	2	38
03	GEER, Jessie	9	2	7	1.5	0	0	3	2	5	1	1	0	20
12	BREWSTER, Rachel	9	5	8	0.0	1	4	5	10	1	1	0	21	
03	WEST, Olivia	0	0	0	0.0	0	0	4	0	0	0	0	0	25
12	BASSETT, Hailey	2	4	1	0.0	1	2	6	0	1	0	1	11	
30	MOORE, Dee	0	1	0	0.0	0	0	0	0	0	0	0	3	
31	TOOLE, Katie	1	1	1	0.0	0	0	1	2	1	1	0	10	
33	KLINKER, Lizzy	1	1	1	0.0	0	0	0	2	0	1	0	6	
44	MASON, Deja	3	4	0	0.0	0	4	2	6	1	0	0	12	
Team		25	58	21	6-7	8	21	29	58	12	17	3	4	200

1st FG %: 41.0 30.0% 2nd: 41.3 38.0% 3rd: 51.3 38.0% 4th: 51.8 50.0% Game: 25.0 33.0% Double/Points
FT %: 51.7 57.0% 1-2: 50.0% 1-3: 50.0% 1-4: 50.0% 1-5: 50.0% 1-6: 50.0% 1-7: 50.0% 1-8: 50.0% 1-9: 50.0% 1-10: 50.0%

Utah 65 - 7-0

##	Player	Total	3-Ptr			Rebounds		PF	TP	A	To	Bk	Stl	Min
			FG	FGA	FG%	FT	FTA							
12	Potter, Emily	1	4	6	0.0	2	1	7	8	3	10	0	2	5
14	Crozon, Paige	1	4	10	2.6	5	8	1	3	4	2	15	0	2
03	Boclar, Talayya	1	4	10	1.2	5	8	3	4	7	3	14	2	0
03	Nawabine, Malia	1	4	13	2.5	2	4	3	4	7	12	1	1	1
11	Bean, Erica	1	1	4	0.2	0	0	0	1	2	5	5	0	3
08	Moore, Kiara	0	0	2	0.0	0	2	1	0	2	1	0	0	9
10	Jacobs, Megan	3	3	3	0.0	0	0	1	1	2	1	0	0	7
23	Provo, Danaeisha	1	7	0	0.0	2	2	3	2	4	1	2	0	0
24	Clark, Tiaa	0	2	1	0.0	0	1	1	0	0	0	0	0	3
33	Fatusi, Joeseta	1	1	1	0.0	0	0	0	2	0	0	0	0	16
Team		22	58	20	16-24	19	25	44	15	65	11	18	2	13

1st FG %: 43.0 40.0% 2nd: 41.3 38.0% 3rd: 51.3 38.0% 4th: 51.8 50.0% Game: 22.0 33.0% Double/Points
FT %: 51.7 57.0% 1-2: 50.0% 1-3: 50.0% 1-4: 50.0% 1-5: 50.0% 1-6: 50.0% 1-7: 50.0% 1-8: 50.0% 1-9: 50.0% 1-10: 50.0%

Officials: Michael Price, Kenneth Nash, Paul Patterson
Technical fouls: Utah State-None, Utah-None.
Attendance: 1190

Score by periods	1st	2nd	3rd	4th	Total	Points	In	Off	2nd	Fast	Bench
Utah State	19	19	13	14	65	58	40	11	7	4	16
Utah	20	13	14	18	65	58	30	11	13	11	11

Last FG - US 4th-00:42, UTAH 4th-03:37.
Largest lead - US by 7, UTAH by 14, UT 0th-00:36.
US led for 07:39, UTAH led for 31:58. Game was tied for 00:53.

Despite out-shooting the opponent, Utah State was dealt its second loss of the season Saturday, falling to in-state rival Utah, 65-58, at the Jon M. Huntsman Center.

Freshman forward **Shannon Dufficy** led the Aggies with 11 points Saturday. She was joined in double figures by sophomore guard **Rachel Brewster**, who tallied 10 points despite fouling out halfway through the third quarter. Brewster and senior forward **Antoina Robinson** were the top rebounders for the Aggies, adding five apiece. Four of Utah's five starters scored in double-digits to help the team to the win.

Behind career-best performances from sophomore guard **Rachel Brewster** and freshman guard **Olivia West**, Utah State basketball opened its weekend of competition in a 69-56 win over Idaho State.

With the loss, Utah State falls to 6-2 on the season, while Utah remains perfect and improves to 7-0.

The Aggies won the tip and first possession, but it took until the second time with the ball to score. That didn't hold up the team though, as Utah State jumped out to a quick 13-7 lead at the first media timeout. The Utes came out of the timeout strong, going on to take their first lead of the day at the 2:49 mark. The teams traded baskets and the lead over the final minutes of the quarter, with Utah ending the period on top, 20-19, on a last-second putback.

Back on the court after the quarter break, the Utes held all control. While Utah missed four-straight 3-point shots in the early minutes of the quarter, it held the Aggies scoreless until the media stop. Utah State scored its first point of the quarter as freshman guard **Eliza West** went 1-for-2 at the free throw line at the 4:49 mark. The Aggies added a pair of field goals, while holding Utah to just two free throws for the final three-and-a-half minutes. The first half ended with Utah leading, 33-28.

Several Aggie players made contributions early in the third quarter, with five different players scoring before the media timeout. Brewster fouled out early, taking her fifth at the mid-point of the third quarter. Without the team's leading scorer, the Aggies still managed to stay in the game. Utah State closed the quarter on a 5-1 run, with all five points coming from Robinson.

The Aggies refused to give up through the fourth quarter, continually bouncing back any time the Utes built up a lead. A 3-pointer from freshman guard **Jessie Geer** at the 2:24 mark cut the deficit to three points, which would be the closest USU got during the final period. Dufficy had the final basket for the Aggies with 42 seconds to play, but Utah got the last word with a pair of free throws to secured the 65-58 win.

Overall, Utah State shot 43.1 percent (25-of-58) from the field, including 16.7 percent (2-of-12) from the 3-point line, and was 85.7 percent (6-of-7) from the free throw line. Utah shot 37.9 percent (22-of-58) from the field, 25.0 percent (5-of-20) from behind the arc and 66.7 percent (16-of-24) from the free throw line.

Official Basketball Box Score -- Game Totals -- Final Statistics
Idaho State vs Utah State
12/1/16 7:00 pm at Logan, Utah (Dee Glen Smith Spectrum)

##	Player	Total	3-Ptr			Rebounds		PF	TP	A	To	Bk	Stl	Min
			FG	FGA	FG%	FT	FTA							
22	Lindsay Brown	2	6	0	0.0	1	5	6	1	7	1	1	0	31
01	Isabel Vara De Rey	6	5	11	3.7	0	0	1	2	0	13	2	4	1
02	Grace Kenyon	4	4	15	2.2	5	6	11	5	11	4	6	1	33
03	Saylaur Grandon	4	9	1	4	4.4	0	4	3	13	0	4	0	1
10	Freyja Newton	6	1	2	0.0	0	0	0	0	0	0	0	0	17
06	Blanca Thacker	0	1	1	0.0	1	0	1	0	0	0	0	0	8
11	Sai Tappasa	1	2	0	0.0	1	0	1	2	2	1	2	0	23
08	Brittany Kuchenderfer	0	0	0	0.0	0	0	0	0	0	0	0	0	2
15	Irene Vicente	0	0	0	0.0	0	0	0	0	0	0	0	0	2
22	Jenna Morch	0	0	0	0.0	0	0	0	0	0	0	0	0	1
41	Esteliana Oros	1	5	0	0.0	1	5	8	4	7	1	2	3	25
Team		16	53	6	22	14	20	56	11	24	5	6	20	

1st FG %: 41.0 30.0% 2nd: 41.3 38.0% 3rd: 51.3 38.0% 4th: 51.8 50.0% Game: 16.0 22.0% Double/Points
FT %: 51.7 57.0% 1-2: 50.0% 1-3: 50.0% 1-4: 50.0% 1-5: 50.0% 1-6: 50.0% 1-7: 50.0% 1-8: 50.0% 1-9: 50.0% 1-10: 50.0%

Utah State 69 - 6-1

##	Player	Total	3-Ptr			Rebounds		PF	TP	A	To	Bk	Stl	Min
			FG	FGA	FG%	FT	FTA							
00	DUFFICY, Shannon	1	2	0	0.0	2	2	6	1	6	3	3	0	28
44	MASON, Deja	1	4	0	0.0	2	2	3	2	4	1	1	3	20
01	WEST, Eliza	1	3	0	0.0	2	3	8	1	1	1	0	0	29
02	GEER, Jessie	9	2	6	1.3	1	2	1	0	1	0	6	0	20
12	BREWSTER, Rachel	9	9	17	1.2	3	4	4	3	22	2	1	0	34
03	WEST, Olivia	5	11	4	5	1.2	2	0	2	15	0	1	0	18
12	BASSETT, Hailey	2	4	1	0.0	1	1	2	1	1	1	1	1	11
30	MOORE, Dee	0	2	0	0.0	1	2	4	6	2	1	1	0	8
31	TOOLE, Katie	2	3	0	0.0	3	4	1	4	1	7	0	0	11
33	KLINKER, Lizzy	0	2	0	0.0	0	1	1	3	0	0	0	0	8
41	ROBINSON, Antoina	0	4	0	0.0	1	4	5	3	1	0	0	1	13
Team		24	61	7	12	14	24	16	21	37	19	6	14	7

1st FG %: 41.0 30.0% 2nd: 41.3 38.0% 3rd: 51.3 38.0% 4th: 51.8 50.0% Game: 24.0 33.0% Double/Points
FT %: 51.7 57.0% 1-2: 50.0% 1-3: 50.0% 1-4: 50.0% 1-5: 50.0% 1-6: 50.0% 1-7: 50.0% 1-8: 50.0% 1-9: 50.0% 1-10: 50.0%

Officials: R-Lisa Jones, UJ-Michael Price, UJ-Tyler Seales
Technical fouls: Idaho State-TEAM, Utah State-None.
Attendance: 465

Score by periods	1st	2nd	3rd	4th	Total	Points	In	Off	2nd	Fast	Bench
Idaho State	17	7	17	15	56	69	28	23	10	14	29
Utah State	18	14	11	26	69	56	18	11	11	16	19

Last FG - ISU 4th-01:10, USU 4th-00:27.
Largest lead - ISU by 4, USU by 15, US by 13 4th-00:27.
ISU led for 04:52, USU led for 31:36. Game was tied for 03:17.

Brewster led all scorers with 22 points on the night, for the second 20-point game of her career and topping her previous career-high of 20. West was next with 15 points, her second double-digit game of the season. Freshman forward **Shannon Dufficy** led the team with eight rebounds. The Bengals had three players in double figures with two 13-point performances and a double-double from Grace Kenyon with 11 points and 11 rebounds.

With the win, Utah State improves to 6-1 on the season, the first time the Aggie women have done so since the 1978-79 season. Idaho State falls to 2-4 with the loss.

The Aggies started the night with a very balanced offense, as the first five field goals were scored by five different players. Despite getting the early lead at the media timeout, the Aggies were held without a field goal for nearly three minutes. At the end of the first, Utah State got back in the scoring column, where a 3-point shot from freshman guard/forward **Hailey Bassett** gave the Aggies the 18-17 lead to end the quarter.

Idaho State was first to score in the second quarter, taking the lead back momentarily. However, the Bengals would not score again until the 1:05 mark. The Aggies also struggled to score down the stretch, going three-and-a-half minutes without scoring before Brewster ended the skid. Brewster's score added to an 11-0 run for the Aggies before ISU snapped the run with a pair of free throws. A trey from freshman guard **Jessie Geer** gave the Aggies their first double-digit lead of the night, but the Bengals added one last layup before time ran out. Utah State ended the half with a 32-24 lead.

Idaho State opened the second half with back-to-back shots, before Dufficy added the first Aggie points of the quarter at the 6:30 mark. With two free throws, Dufficy was the only Utah State player to score before the media timeout. Sophomore guard **Katie Toole** joined her later, converting a three-point play. The teams traded shots back-and-forth over the remainder of the quarter, but USU held onto its lead, up 43-41.

The Bengals were first to score in the final quarter, seeing their first tie score since the 3:18 mark of the first quarter. Three free throws between Geer and Toole put Utah State back ahead at the final media stop of the night. Directly out of the timeout, both teams combined for seven turnovers before either could score again. West drained four deep 3-pointers over a three-minute period, with the third bringing the Aggies' lead back to double figures momentarily. Despite missing a late free throw, Utah State remained in possession as the final minute started. With a strong performance at the free throw line over the final minutes of play, the Aggies continued to build up their lead. Brewster added one final layup to hit a new career-high, finalizing the score and result for the team.

Overall, Utah State shot 39.3 percent (24-of-61) from the field, including a season-high 58.3 percent (7-of-12) from the 3-point line, and was 58.3 percent (14-of-24) from the free throw line. Idaho State shot 34.0 percent (18-of-53) from the field, 27.3 percent (6-of-22) from behind the arc and 70.0 percent (14-of-20) from the free throw line.

**ASSOCIATED PRESS TOP 25
Week 6**

Rank	Team (1st)	Record	Points
1	Connecticut (33)	9-0	825
2	Notre Dame	9-1	764
3	Baylor	10-1	761
4	Maryland	10-0	742
5	Mississippi State	9-0	676
6	South Carolina	7-1	657
7	Florida State	10-1	625
8	Louisville	8-2	574
9	UCLA	7-1	565
10	Stanford	8-1	520
11	Washington	10-1	490
12	Ohio State	8-3	424
13	Miami	8-1	415
14	West Virginia	10-0	406
15	Colorado	9-0	286
16	Texas	3-4	268
17	DePaul	6-3	225
18	Duke	10-1	217
19	Kentucky	7-3	189
20	Oklahoma	7-2	187
21	Syracuse	8-3	162
22	South Florida	7-0	153
23	Arizona State	6-2	137
24	Virginia Tech	10-0	112
25	Oregon	7-1	75

Also receiving votes: Oregon State 68, Green Bay 49, Kansas State 44, California 29, Florida 23, Oklahoma State 15, Northwestern 10, USC 9, Texas A&M 9, Auburn 7, Gonzaga 4, UNLV 1, Vanderbilt 1, Michigan State 1

Bold= 2016-17 Opponent

**USA TODAY COACHES POLL
Week 6**

Rank	Team (1st)	Record	Points
1	Connecticut (32)	9-0	800
2	Notre Dame	9-1	753
3	Maryland	11-0	725
4	Baylor	10-1	723
5	Mississippi State	9-0	656
6	South Carolina	7-1	644
7	Florida State	10-1	606
8	Louisville	8-2	554
9	UCLA	7-1	553
10	Stanford	8-1	511
11	Washington	10-1	474
12	Miami	8-1	416
13	Ohio State	8-3	409
14	West Virginia	10-0	376
15	Oregon State	6-1	283
16	DePaul	6-3	269
17	Texas	3-4	230
18	Syracuse	8-3	215
19	South Florida	7-0	185
20	Duke	10-1	175
21	Arizona State	6-2	154
22	Oklahoma	7-2	137
23	Kentucky	7-3	124
24	California	9-0	110
25	Virginia Tech	10-0	75

Also receiving votes: Colorado 54, Green Bay 51, Oregon 27, Michigan State 26, Oklahoma State 26, Texas A&M 15, Florida 11, Northwestern 9, Michigan 7, Kansas State 6, Gonzaga 4, Auburn 3, Georgia Tech 2, Penn State 1, Tennessee 1

Bold= 2016-17 Opponent

2016-17 Utah State Starters

Nov. 11	Westminster	E. West	Brewster	Toole	Dufficy	Robinson
Nov. 14	Montana State	E. West	Brewster	Toole	Dufficy	Robinson
Nov. 17	UC Irvine	E. West	Brewster	Toole	Bassett	Robinson
Nov. 22	Southern Utah	E. West	Brewster	Toole	Dufficy	Robinson
Nov. 25	vs. Incarnate Word	E. West	Brewster	Geer	Dufficy	Mason
Nov. 27	at Montana	E. West	Brewster	Geer	Dufficy	Mason
Dec. 1	Idaho State	E. West	Brewster	Geer	Dufficy	Mason
Dec. 3	at Utah	E. West	Brewster	Geer	Dufficy	Robinson
Dec. 15	Utah Valley					
Dec. 17	BYU					
Dec. 21	at Arizona					
Dec. 29	at Boise State					
Dec. 31	Air Force					
Jan. 4	at New Mexico					
Jan. 7	at UNLV					
Jan. 11	Wyoming					
Jan. 14	San Diego State					
Jan. 21	at Colorado State					
Jan. 25	New Mexico					
Jan. 28	at Fresno State					
Feb. 1	at Nevada					
Feb. 4	Boise State					
Feb. 8	Colorado State					
Feb. 11	at Wyoming					
Feb. 15	at San Diego State					
Feb. 18	Nevada					
Feb. 22	San José State					
Feb. 25	at Air Force					
Feb. 28	UNLV					

AGAINST THE COMPETITION - BYU

Last Meeting - Nov. 24, 2015 BYU 81, Utah State 69

STAT COMPARISON

Despite five double digit scorers, Utah State women's basketball opened the road portion of its season Tuesday, falling to in-state rival BYU, 81-69.

With the loss, Utah State falls to 2-2 on the year, while BYU improves to the same record with the victory.

Freshman guard **Rachel Brewster** was the leading scorer for the Aggies Tuesday, with a career-best 17 points. Joining her double figures were freshman guard **Katie Toole** with 12 and freshman guard **Victoria**

Official Basketball Box Score -- Game Totals -- Final Statistics Utah State vs Brigham Young 11/24/15 11:05 a.m. at Provo, Utah (Marriott Center)

Utah State 69 • 2-2

##	Player	c	Total			3-Ptr			Rebounds			PF	TP	A	TO	Blk	Stl	Min
			FG-FGA	FG-FGA	FT-FTA	Off	Def	Tot	Off	Def	Tot							
44	MASON, Deja	c	2-3	0-0	0-2	3	4	7	3	4	1	2	1	1	1	1	14	
01	PRICE, Victoria	g	3-7	0-2	4-6	1	2	3	3	10	6	4	0	0	23			
03	NAKKASOGLU, Funda	g	0-0	0-0	0-0	0	0	0	0	0	2	1	0	1	4			
25	BREWSTER, Rachel	g	6-18	1-4	4-5	1	3	4	2	17	2	3	0	2	34			
31	TOOLE, Katie	g	4-11	1-2	3-3	0	2	2	2	12	0	4	0	2	34			
10	ANCHLING, Julianne	g	1-4	1-4	0-0	0	2	2	4	3	0	1	0	1	12			
11	JENSEN, Lindsey	g	0-2	0-1	1-2	0	1	1	0	1	0	2	0	1	11			
20	MILES, Mariah	g	0-0	0-0	0-4	1	2	3	1	0	0	0	0	0	7			
22	DJUKIC, Tijana	g	3-6	0-1	4-5	2	3	5	2	10	0	2	1	0	20			
23	PECK, Baylee	g	0-0	0-0	0-0	0	0	0	0	0	0	0	0	0	4			
33	KLINKER, Lizzy	g	1-1	0-0	0-0	0	5	5	1	2	0	1	1	0	9			
41	ROBINSON, Antoina	g	5-8	0-1	0-0	2	1	3	1	10	0	1	1	0	28			
Team						4	4	8										
Totals			25-60	3-15	16-27	14	29	43	19	69	11	21	4	8	200			

FG % 1st Half: 14-29 48.3%	2nd half: 11-31 35.5%	Game: 25-60 41.7%	Deadball Rebounds: 6
3FG % 1st Half: 1-5 20.0%	2nd half: 2-10 20.0%	Game: 3-15 20.0%	
FT % 1st Half: 5-10 50.0%	2nd half: 11-17 64.7%	Game: 16-27 59.3%	

Brigham Young 81 • 2-2

##	Player	f	Total			3-Ptr			Rebounds			PF	TP	A	TO	Blk	Stl	Min
			FG-FGA	FG-FGA	FT-FTA	Off	Def	Tot	Off	Def	Tot							
32	PURCELL, Kalani	f	6-16	0-1	2-4	10	11	21	4	14	6	9	0	3	39			
34	ORTON, Micalee	f	3-4	0-0	0-0	1	2	3	0	6	3	0	0	1	21			
03	MAEDA, Kylie	g	3-5	1-2	0-0	0	1	1	4	7	7	1	0	2	34			
21	RYDALCH, Lexi	g	8-23	4-12	8-10	2	3	5	2	28	3	2	0	3	37			
23	PULSIPHER, Makenzi	g	5-16	0-4	0-1	0	3	3	4	10	1	0	0	1	26			
04	WAYMENT, Amanda	g	3-6	0-0	0-0	5	4	9	1	6	0	2	0	1	14			
20	BROADHEAD, Cassie	g	3-4	0-0	1-1	0	1	1	4	7	2	2	0	1	14			
22	NIELSON, Kristine	g	0-1	0-0	1-2	0	1	1	1	1	2	0	0	1	9			
25	ROBINS-HARDY, Alohi	g	0-0	0-0	0-0	0	0	0	0	0	0	0	0	1	1			
33	MOODY, Jasmine	g	1-2	0-0	0-0	0	0	0	0	2	0	0	0	0	5			
Team						2	0	2										
Totals			32-77	5-19	12-18	20	26	46	20	81	24	16	0	13	200			

FG % 1st Half: 21-38 55.3%	2nd half: 11-39 28.2%	Game: 32-77 41.6%	Deadball Rebounds: 2
3FG % 1st Half: 1-5 20.0%	2nd half: 0-6 0.0%	Game: 5-19 26.3%	
FT % 1st Half: 3-3 100.0%	2nd half: 9-15 60.0%	Game: 12-18 66.7%	

Officials: Karen Lasuik, Rick Showers, Paul Patterson
Technical fouls: Utah State-TEAM. Brigham Young-None.
Attendance: 2808

Score by periods	1st	2nd	3rd	4th	Total
Utah State	18	16	15	20	69
Brigham Young	27	23	21	10	81

Price, junior center **Antoina Robinson** and senior forward **Tijana Djukic** with 10 points apiece. Freshman center **Deja Mason** was the top rebounder with seven.

The game opened fairly evenly with the teams trading buckets back-and-forth. Four minutes into action, Nakkasoglu was taken down with an injury. With Nakkasoglu out of the game, the Cougar offense went on a run, finishing the first quarter making six of seven shots. At the end of one, BYU led 27-18.

Nakkasoglu returned to the team bench prior to the start of the second quarter, but did not see any further action. Throughout the early minutes of the second quarter, the Aggies took advantage of BYU turnovers, turning them into points on the other end of the court. A 3:32 scoring drought for the Aggies resulted in a 10-0 run for the Cougars, finding their biggest lead of the half. Junior forward Antoina Robinson ended the scoring skid for the Aggies before cementing the half with a final shot. BYU got the last word of the half, however, sending the game into the halftime break with a 50-34 advantage, the Aggies' biggest halftime deficit of the season.

The Aggies clawed back a bit early in the third quarter, but several stops by the officials slowed momentum. Over a stretch, the Utah State defense held the Cougars to 2-of-13 shots, but roles reversed as the Aggies then hit a scoring skid with several turnovers. A 3-point shot from senior forward **Julianne Anchling** was the final score of the quarter, which concluded in a 71-49 lead for the Cougars.

Utah State kept up the fight through the fourth quarter, led by Brewster and Djukic. The Cougars hit a 2:41 scoring drought, ended only by a free throw. The Aggie defense again held BYU to limited scoring in the final period, as the Cougars shot 2-of-14 in the final 10 minutes. As the clock ticked down, neither team made a field goal for more than four minutes as the teams combined for 12-straight missed attempts. Toole finally ended the skid for both teams with a 3 as time hit the one-minute mark. The Cougars maintained their double-figure lead, however, with a layup scored at the buzzer.

Overall, Utah State shot 41.7 percent (25-of-60) from the field, 20.0 percent (3-of-15) from the 3-point line and 59.3 percent (16-of-27) from the free throw line. BYU shot 41.6 percent (32-of-77) from the field, 26.3 percent (5-of-19) from behind the arc and 66.7 percent (12-of-18) from the free throw line.

USU		BYU
65.9	Points Per Game	63.8
55.1	Points Allowed	63.4
+10.8	Scoring Margin	+0.3
.406	Field Goal %	.411
4.9	Threes Per Game	5.2
.371	Three-Point FG %	.283
.679	Free Throw %	.650
40.1	Rebounds	35.8
15.8	Assists	13.6
10.4	Steals	8.6
6.8	Blocks	4.7
15.4	Turnovers	16.1

UTAH STATE VS. BYU

Utah State trails, 3-34 Logan: 2-12; Provo: 1-18; Neutral: 0-4

1/18/74	Logan	W	48-41
2/9/74	Provo	W	42-33
3/1/75	Provo	L	55-53
2/21/76	Provo	L	77-66
3/6/76	Neutral	L	65-58
12/4/76	Logan	L	67-64
2/12/77	Provo	L	79-75
1/7/78	Neutral	L	71-68
3/3/78	Logan	L	79-71
12/7/78	Logan	W	80-72
1/20/79	Provo	L	111-110
3/6/80	Provo	L	105-85
1/2/81	Provo	L	99-65
11/21/81	Logan	L	108-82
1/23/82	Provo	L	105-64
11/30/82	Provo	L	115-80
12/14/82	Logan	L	92-71
1/8/83	Provo	L	118-63
11/26/83	Logan	L	121-70
2/2/84	Logan	L	89-54
2/9/85	Logan	L	93-80
3/8/85	Provo	L	119-67
2/6/86	Logan	L	91-60
3/4/86	Provo	L	112-59
1/2/87	Neutral	L	105-67
2/3/87	Logan	L	116-66
2/26/87	Provo	L	99-44
12/29/07	Logan	L	70-64
12/13/08	Provo	L	61-60 (2OT)
12/19/09	Logan	L	61-48
11/23/10	Provo	L	84-52
3/19/11	Neutral	L	102-63
12/17/11	Logan	L	73-65
12/4/12	Provo	L	81-77
12/21/13	Provo	L	84-74
12/22/14	Logan	L	62-58 (2OT)
11/24/15	Provo	L	69-81

UTAH STATE VS. THE WCC

BYU	3-34
Gonzaga.....	0-0
Loyola Marymount.....	2-1
Pacific.....	4-5
Pepperdine.....	0-4
Portland.....	2-2
Saint Mary's.....	1-1
San Diego.....	1-2
San Francisco.....	12
Santa Clara.....	1-2
Total	15-53

INDIVIDUAL GAME-BY-GAME STATISTICS



1 ELIZA WEST

5-5, Freshman, Guard
Mount Martha, Victoria, Australia
(The Peninsula School)

PTS	REB	FG%	3FG%	FT%	MIN
8.3	3.0	.391	.333	.625	29.8

WEST GAME-BY-GAME

Opponent	MIN	FG	3FG	FT	O-D-T	PF	A	TO	B	S	TP
Westminster	^ 26	4-11	1-3	1-2	0-6-6	3	3	2	0	4	10
Montana State	^ 33	3-8	0-1	2-4	1-2-3	2	3	6	0	2	8
UC Irvine	^ 28	1-9	0-3	0-0	1-3-4	1	5	0	0	4	2
Southern Utah	^ 29	4-7	3-3	0-0	0-2-2	2	4	2	1	2	11
vs. Incarnate Word	^ 20	0-3	0-0	6-6	0-3-3	1	4	0	0	3	6
at Montana	^ 35	8-14	2-5	0-0	0-3-3	2	3	0	0	2	18
Idaho State	^ 29	1-3	0-1	0-2	0-1-1	1	7	4	0	0	2
at Utah	^ 38	4-9	0-2	1-2	0-2-2	1	4	8	0	2	9
Utah Valley											
BYU											
at Arizona											
at Boise State *											
Air Force *											
at New Mexico *											
at UNLV *											
Wyoming *											
San Diego State *											
at Colorado State *											
New Mexico *											
at Fresno State *											
at Nevada *											
Boise State *											
Colorado State *											
at Wyoming *											
at San Diego State *											
Nevada *											
San José State *											
at Air Force *											
UNLV *											

^ Starter

* Mountain West game

WEST'S SEASON HIGHS

Points	18 vs. Montana (11/27/16)
Rebounds	6 vs. Westminster (11/11/16)
Assists	7 vs. Idaho State (12/1/16)
Steals	4 (2) vs. UC Irvine (11/17/16)
Blocks	1 vs. Southern Utah (11/22/16)
Minutes	38 at Utah (12/3/16)

WEST'S SEASON SUPERLATIVES

Double-Figure Scoring: 3 times
20-Plus Points: ---
30-Plus Points: ---
5-Plus Rebounds: 1 time
5-Plus Assists: 2 times
Double-Doubles: ---



2 JESSIE GEER

5-8, Freshman, Guard
Gillette, Wyoming
(Campbell County HS)

PTS	REB	FG%	3FG%	FT%	MIN
6.4	2.5	.400	.296	.750	20.0

GEER GAME-BY-GAME

Opponent	MIN	FG	3FG	FT	O-D-T	PF	A	TO	B	S	TP
Westminster	19	2-5	1-2	0-0	1-0-1	1	2	2	0	2	5
Montana State	12	3-3	1-1	0-0	1-1-2	1	1	2	0	0	1
UC Irvine	20	4-6	1-3	0-0	0-1-1	1	7	2	0	4	9
Southern Utah	20	2-7	0-4	2-2	3-1-4	1	2	3	0	2	6
vs. Incarnate Word	^ 20	2-6	0-1	0-0	0-4-4	0	1	1	0	0	4
at Montana	^ 26	3-10	3-8	0-0	2-2-4	1	2	0	1	1	9
Idaho State	^ 20	2-6	1-3	1-2	1-0-1	0	0	2	0	1	6
at Utah	^ 20	2-7	1-5	0-0	0-3-3	2	1	1	0	0	5
Utah Valley											
BYU											
at Arizona											
at Boise State *											
Air Force *											
at New Mexico *											
at UNLV *											
Wyoming *											
San Diego State *											
at Colorado State *											
New Mexico *											
at Fresno State *											
at Nevada *											
Boise State *											
Colorado State *											
at Wyoming *											
at San Diego State *											
Nevada *											
San José State *											
at Air Force *											
UNLV *											

^ Starter

* Mountain West game

GEER'S SEASON HIGHS

Points	9 (2) vs. Montana (11/27/16)
Rebounds	4 (3) vs. Montana (11/27/16)
Assists	7 vs. UC Irvine (11/17/16)
Steals	4 vs. UC Irvine (11/17/16)
Blocks	1 vs. Montana (11/27/16)
Minutes	26 vs. Montana (11/27/16)

GEER'S SEASON SUPERLATIVES

Double-Figure Scoring: ---
20-Plus Points: ---
30-Plus Points: ---
5-Plus Rebounds: ---
5-Plus Assists: 1 time
Double-Doubles: ---

INDIVIDUAL GAME-BY-GAME STATISTICS



3

OLIVIA WEST

5-6, Freshman, Guard
Launceston, Tasmania, Australia
(Templestowe College)

PTS	REB	FG%	3FG%	FT%	MIN
7.1	1.1	.420	.476	.625	17.4

WEST GAME-BY-GAME

Opponent	MIN	FG	3FG	FT	O-D-T	PF	A	TO	B	S	TP
Westminster	16	4-8	1-2	0-0	2-2-4	4	4	0	0	2	9
Montana State	6	0-1	0-0	1-2	0-0-0	1	1	2	0	0	1
UC Irvine	11	2-5	2-3	0-0	0-0-0	1	2	4	0	2	6
Southern Utah	23	2-8	1-5	0-0	0-2-2	4	1	0	0	1	5
vs. Incarnate Word	22	5-7	1-3	3-4	0-1-1	4	3	3	0	1	14
at Montana	18	3-4	1-2	0-0	0-0-0	0	4	1	0	0	7
Idaho State	18	5-11	4-5	1-2	2-0-2	2	0	1	0	3	15
at Utah	25	0-6	0-1	0-0	0-0-0	4	0	0	0	0	0
Utah Valley											
BYU											
at Arizona											
at Boise State *											
Air Force *											
at New Mexico *											
at UNLV *											
Wyoming *											
San Diego State *											
at Colorado State *											
New Mexico *											
at Fresno State *											
at Nevada *											
Boise State *											
Colorado State *											
at Wyoming *											
at San Diego State *											
Nevada *											
San José State *											
at Air Force *											
UNLV *											

^ Starter

* Mountain West game

WEST'S SEASON HIGHS

Points	15 vs. Idaho State (12/1/16)
Rebounds	4 vs. Westminster (11/11/16)
Assists	4 (2) vs. Montana (11/27/16)
Steals	3 vs. Idaho State (12/1/16)
Blocks	NA
Minutes	25 at Utah (12/3/16)

WEST'S SEASON SUPERLATIVES

Double-Figure Scoring: 1 time
 20-Plus Points: ---
 30-Plus Points: ---
 5-Plus Rebounds: ---
 5-Plus Assists: ---
 Double-Doubles: ---



5

SHANNON DUFFICY

6-2, Freshman, Forward
Preston, Victoria, Australia
(Our Lady of Mercy College)

PTS	REB	FG%	3FG%	FT%	MIN
8.6	8.6	.407	.400	.571	27.3

DUFFICY GAME-BY-GAME

Opponent	MIN	FG	3FG	FT	O-D-T	PF	A	TO	B	S	TP
Westminster	^ 26	6-15	0-1	2-5	8-1-9	0	3	0	0	3	14
Montana State	^ 32	3-9	0-0	1-2	5-9-14	3	3	2	2	2	7
UC Irvine	DNP										
Southern Utah	^ 19	3-5	1-3	1-1	1-2-3	1	2	5	1	1	8
vs. Incarnate Word	^ 20	3-7	2-2	2-4	2-7-9	1	5	2	0	2	10
at Montana	^ 26	2-6	0-1	0-0	5-9-14	5	1	4	0	1	4
Idaho State	^ 28	2-5	0-0	2-2	2-6-8	1	3	3	0	2	6
at Utah	^ 30	5-12	1-3	0-0	2-1-3	0	5	3	1	1	11
Utah Valley											
BYU											
at Arizona											
at Boise State *											
Air Force *											
at New Mexico *											
at UNLV *											
Wyoming *											
San Diego State *											
at Colorado State *											
New Mexico *											
at Fresno State *											
at Nevada *											
Boise State *											
Colorado State *											
at Wyoming *											
at San Diego State *											
Nevada *											
San José State *											
at Air Force *											
UNLV *											

^ Starter

* Mountain West game

DUFFICY'S SEASON HIGHS

Points	14 vs. Westminster (11/11/16)
Rebounds	14 (2) vs. Montana (11/27/16)
Assists	5 (2) at Utah (12/3/16)
Steals	3 vs. Westminster (11/11/16)
Blocks	2 vs. Montana State (11/14/16)
Minutes	32 vs. Montana State (11/14/16)

DUFFICY'S SEASON SUPERLATIVES

Double-Figure Scoring: 3 times
 20-Plus Points: ---
 30-Plus Points: ---
 5-Plus Rebounds: 5 times
 5-Plus Assists: 2 times
 Double-Doubles: ---

INDIVIDUAL GAME-BY-GAME STATISTICS



12 HAILEY BASSETT

6-2, Freshman, Guard/Forward
Layton, Utah
(Layton HS)

PTS	REB	FG%	3FG%	FT%	MIN
4.9	4.0	.378	.333	.750	12.9

BASSETT GAME-BY-GAME

Opponent	MIN	FG	3FG	FT	O-D-T	PF	A	TO	B	S	TP
Westminster	16	1-5	1-1	2-4	3-4-7	2	0	2	0	0	5
Montana State	8	2-7	0-2	0-0	3-0-3	0	0	0	0	0	4
UC Irvine	15	2-7	0-1	0-0	4-2-6	1	0	0	1	0	4
Southern Utah	13	1-2	0-0	3-4	1-2-3	2	0	2	1	0	5
vs. Incarnate Word	16	3-5	0-0	0-0	2-3-5	2	0	1	2	0	6
at Montana	9	1-3	0-0	2-2	0-4-4	5	0	1	1	0	4
Idaho State	11	2-4	1-1	0-0	1-1-2	1	0	1	1	1	5
at Utah	15	2-4	0-1	2-2	1-1-2	2	0	1	1	0	6
Utah Valley											
BYU											
at Arizona											
at Boise State *											
Air Force *											
at New Mexico *											
at UNLV *											
Wyoming *											
San Diego State *											
at Colorado State *											
New Mexico *											
at Fresno State *											
at Nevada *											
Boise State *											
Colorado State *											
at Wyoming *											
at San Diego State *											
Nevada *											
San José State *											
at Air Force *											
UNLV *											

^ Starter

* Mountain West game

BASSETT'S SEASON HIGHS

Points	6 (2) at Utah (12/3/16)
Rebounds	7 vs. Westminster (11/11/16)
Assists	NA
Steals	1 vs. Idaho State (12/1/16)
Blocks	2 vs. Incarnate Word (11/25/16)
Minutes	16 (2) vs. Incarnate Word (11/25/16)

BASSETT'S SEASON SUPERLATIVES

Double-Figure Scoring: ---
20-Plus Points: ---
30-Plus Points: ---
5-Plus Rebounds: 3 times
5-Plus Assists: ---
Double-Doubles: ---



22 RACHEL BREWSTER

5-11, Sophomore, Guard
Melbourne, Australia
(Rowville Secondary College)

PTS	REB	FG%	3FG%	FT%	MIN
13.9	3.4	.461	.471	.818	26.3

BREWSTER GAME-BY-GAME

Opponent	MIN	FG	3FG	FT	O-D-T	PF	A	TO	B	S	TP
Westminster	21	5-11	1-2	0-0	2-2-4	1	3	2	0	3	11
Montana State	35	7-19	0-1	4-4	2-1-3	4	2	2	0	0	18
UC Irvine	25	7-15	2-5	0-0	1-4-5	4	1	3	0	0	16
Southern Utah	25	4-14	1-4	0-0	1-0-1	3	3	4	0	3	9
vs. Incarnate Word	24	8-12	2-2	0-0	0-2-2	2	1	1	0	0	18
at Montana	26	2-6	1-1	2-3	0-3-3	4	0	2	0	2	7
Idaho State	34	9-17	1-2	3-4	4-0-4	3	2	1	0	1	22
at Utah	21	5-8	0-0	0-0	1-4-5	5	1	1	0	0	10
Utah Valley											
BYU											
at Arizona											
at Boise State *											
Air Force *											
at New Mexico *											
at UNLV *											
Wyoming *											
San Diego State *											
at Colorado State *											
New Mexico *											
at Fresno State *											
at Nevada *											
Boise State *											
Colorado State *											
at Wyoming *											
at San Diego State *											
Nevada *											
San José State *											
at Air Force *											
UNLV *											

^ Starter

* Mountain West game

BREWSTER'S SEASON HIGHS

Points	22 vs. Idaho State (12/1/16)
Rebounds	5 (2) at Utah (12/3/16)
Assists	3 (2) vs. Southern Utah (11/22/16)
Steals	3 vs. Westminster (11/11/16)
Blocks	NA
Minutes	35 vs. Montana State (11/14/16)

BREWSTER'S SEASON SUPERLATIVES

Double-Figure Scoring: 6 times
20-Plus Points: 1 time
30-Plus Points: ---
5-Plus Rebounds: 2 times
5-Plus Assists: ---
Double-Doubles: ---

BREWSTER'S CAREER HIGHS

Points	22 vs. Idaho State (12/1/16)
Rebounds	11 (2) at San Diego State (1/2/16)
Assists	8 vs. Sacramento State (11/14/15)
Steals	5 at Air Force (1/13/16)
Blocks	1 (4) vs. San José State (12/30/15)
Minutes	37 (2) at Colorado State (2/17/16)

BREWSTER'S CAREER SUPERLATIVES

Double-Figure Scoring: 20 times
20-Plus Points: 3 times
30-Plus Points: ---
5-Plus Rebounds: 21 times
5-Plus Assists: 1 time
Double-Doubles: ---

INDIVIDUAL GAME-BY-GAME STATISTICS



30

DEE MOORE

6-4, Freshman, Forward
Allen, Texas
(Allen HS)

PTS	REB	FG%	3FG%	FT%	MIN
3.1	2.3	.500	.000	.833	7.5

MOORE GAME-BY-GAME

Opponent	MIN	FG	3FG	FT	O-D-T	PF	A	TO	B	S	TP
Westminster	9	0-2	0-0	2-2	1-1-2	1	1	0	0	0	2
Montana State	3	1-2	0-0	0-0	0-2-2	0	0	1	2	0	2
UC Irvine	16	3-6	0-1	0-0	1-1-2	1	0	0	4	0	6
Southern Utah	4	1-2	0-0	0-0	1-0-1	0	0	0	0	0	2
vs. Incarnate Word	12	3-3	0-0	2-2	2-3-5	2	0	1	2	0	6
at Montana	5	2-2	0-0	0-0	0-0-0	0	0	1	0	0	4
Idaho State	8	0-2	0-0	1-2	2-4-6	2	1	0	2	0	1
at Utah	3	0-1	0-0	0-0	0-0-0	0	0	0	0	0	0
Utah Valley											
BYU											
at Arizona											
at Boise State *											
Air Force *											
at New Mexico *											
at UNLV *											
Wyoming *											
San Diego State *											
at Colorado State *											
New Mexico *											
at Fresno State *											
at Nevada *											
Boise State *											
Colorado State *											
at Wyoming *											
at San Diego State *											
Nevada *											
San José State *											
at Air Force *											
UNLV *											

^ Starter
* Mountain West game

MOORE'S SEASON HIGHS

Points	6 (2) vs. Incarnate Word (11/25/16)
Rebounds	6 vs. Idaho State (12/1/16)
Assists	1 (2) vs. Idaho State (12/1/16)
Steals	NA
Blocks	4 vs. UC Irvine (11/17/16)
Minutes	16 vs. UC Irvine (11/17/16)

MOORE'S SEASON SUPERLATIVES

Double-Figure Scoring: ---
20-Plus Points: ---
30-Plus Points: ---
5-Plus Rebounds: 2 times
5-Plus Assists: ---
Double-Doubles: ---



31

KATIE TOOLE

5-10, Sophomore, Guard
Farmington, Utah
(Viewmont HS)

PTS	REB	FG%	3FG%	FT%	MIN
4.4	2.3	.484	.333	.667	16.0

TOOLE GAME-BY-GAME

Opponent	MIN	FG	3FG	FT	O-D-T	PF	A	TO	B	S	TP
Westminster	^ 19	3-6	0-1	0-0	1-0-1	1	0	1	0	1	6
Montana State	^ 18	1-3	0-0	0-0	0-2-2	0	1	0	0	1	2
UC Irvine	^ 27	5-10	0-0	1-2	3-1-4	1	3	0	0	2	11
Southern Utah	^ 17	2-5	1-2	0-0	0-0-0	0	1	3	1	1	5
vs. Incarnate Word	18	1-1	0-0	0-0	0-3-3	0	1	1	0	0	2
at Montana	8	0-2	0-0	0-0	0-1-1	1	1	2	0	0	0
Idaho State	11	2-3	0-0	3-4	3-1-4	1	0	0	0	0	7
at Utah	10	1-1	0-0	0-0	1-2-3	1	1	1	0	0	2
Utah Valley											
BYU											
at Arizona											
at Boise State *											
Air Force *											
at New Mexico *											
at UNLV *											
Wyoming *											
San Diego State *											
at Colorado State *											
New Mexico *											
at Fresno State *											
at Nevada *											
Boise State *											
Colorado State *											
at Wyoming *											
at San Diego State *											
Nevada *											
San José State *											
at Air Force *											
UNLV *											

^ Starter
* Mountain West game

TOOLE'S SEASON HIGHS

Points	11 vs. UC Irvine (11/17/16)
Rebounds	4 vs. UC Irvine (11/17/16)
Assists	3 vs. UC Irvine (11/17/16)
Steals	2 vs. UC Irvine (11/17/16)
Blocks	1 vs. Southern Utah (11/22/16)
Minutes	27 vs. UC Irvine (11/17/16)

TOOLE'S SEASON SUPERLATIVES

Double-Figure Scoring: 1 time
20-Plus Points: ---
30-Plus Points: ---
5-Plus Rebounds: ---
5-Plus Assists: ---
Double-Doubles: ---

TOOLE'S CAREER HIGHS

Points	22 vs. Sacramento State (11/14/15)
Rebounds	11 at Northern Colorado (12/1/15)
Assists	4 vs. New Mexico (1/9/16)
Steals	2 (5) at Utah Valley (12/10/15)
Blocks	2 at Nevada (1/30/16)
Minutes	36 (2) at Northern Colorado (12/1/15)

TOOLE'S CAREER SUPERLATIVES

Double-Figure Scoring: 9 times
20-Plus Points: 2 times
30-Plus Points: ---
5-Plus Rebounds: 6 times
5-Plus Assists: ---
Double-Doubles: 1 time

INDIVIDUAL GAME-BY-GAME STATISTICS



33

LIZZY KLINKER

5-10, Sophomore, Guard
Fairfield, Mont.
(Fairfield HS)

PTS	REB	FG%	3FG%	FT%	MIN
2.3	1.9	.316	.000	.600	11.4

KLINKER GAME-BY-GAME

Opponent	MIN	FG	3FG	FT	O-D-T	PF	A	TO	B	S	TP
Westminster	17	2-3	0-0	2-2	2-3-5	1	3	0	0	0	6
Montana State	17	1-5	0-1	2-2	2-2-4	3	3	0	0	3	4
UC Irvine	15	1-5	0-0	0-0	2-0-2	1	1	0	1	1	2
Southern Utah	7	0-1	0-0	0-0	1-1-2	0	0	1	0	0	0
vs. Incarnate Word	13	0-1	0-1	2-4	0-0-0	3	4	0	1	0	2
at Montana	11	1-1	0-0	0-2	0-1-1	1	1	2	1	0	2
Idaho State	8	0-2	0-0	0-0	0-1-1	3	0	1	0	0	0
at Utah	6	1-1	0-0	0-0	0-0-0	0	0	1	0	0	2
Utah Valley											
BYU											
at Arizona											
at Boise State *											
Air Force *											
at New Mexico *											
at UNLV *											
Wyoming *											
San Diego State *											
at Colorado State *											
New Mexico *											
at Fresno State *											
at Nevada *											
Boise State *											
Colorado State *											
at Wyoming *											
at San Diego State *											
Nevada *											
San José State *											
at Air Force *											
UNLV *											

^ Starter
* Mountain West game

KLINKER'S SEASON HIGHS

Points	6 vs. Westminster (11/11/16)
Rebounds	5 vs. Westminster (11/11/16)
Assists	4 vs. Incarnate Word (11/25/16)
Steals	3 vs. Montana State (11/14/16)
Blocks	1 (3) vs. Montana (11/27/16)
Minutes	17 (2) vs. Montana State (11/14/16)

KLINKER'S SEASON SUPERLATIVES

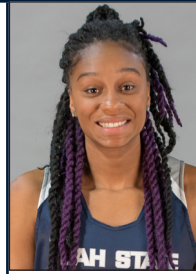
Double-Figure Scoring: ---
20-Plus Points: ---
30-Plus Points: ---
5-Plus Rebounds: 1 time
5-Plus Assists: ---
Double-Doubles: ---

KLINKER'S CAREER HIGHS

Points	6 vs. Westminster (11/11/16)
Rebounds	6 (2) vs. Air Force (3/1/16)
Assists	4 vs. Incarnate Word (11/25/16)
Steals	3 vs. Montana State (11/14/16)
Blocks	1 (4) vs. Montana (11/27/16)
Minutes	17 (2) vs. Montana State (11/14/16)

KLINKER'S CAREER SUPERLATIVES

Double-Figure Scoring: ---
20-Plus Points: ---
30-Plus Points: ---
5-Plus Rebounds: 5 times
5-Plus Assists: ---
Double-Doubles: ---



21

ANGELICA DE PAULO

6-2, Senior, Forward
São Paulo, Brazil
(Escola Estadual Doutor Jose Fornari/New Mexico JC)

PTS	REB	FG%	3FG%	FT%	MIN
---	---	---	---	---	---

DE PAULO GAME-BY-GAME

Opponent	MIN	FG	3FG	FT	O-D-T	PF	A	TO	B	S	TP
Westminster	DNP										
Montana State	DNP										
UC Irvine	DNP										
Southern Utah	DNP										
vs. Incarnate Word	DNP										
at Montana	DNP										
Idaho State	DNP										
at Utah											
Utah Valley											
BYU											
at Arizona											
at Boise State *											
Air Force *											
at New Mexico *											
at UNLV *											
Wyoming *											
San Diego State *											
at Colorado State *											
New Mexico *											
at Fresno State *											
at Nevada *											
Boise State *											
Colorado State *											
at Wyoming *											
at San Diego State *											
Nevada *											
San José State *											
at Air Force *											
UNLV *											

^ Starter
* Mountain West game

DE PAULO'S SEASON HIGHS

Points	
Rebounds	
Assists	
Steals	
Blocks	
Minutes	

DE PAULO'S SEASON SUPERLATIVES

Double-Figure Scoring: ---
20-Plus Points: ---
30-Plus Points: ---
5-Plus Rebounds: ---
5-Plus Assists: ---
Double-Doubles: ---

DE PAULO'S CAREER HIGHS

Points	9 at Montana (12/20/15)
Rebounds	6 (2) vs. Air Force (1/13/16)
Assists	1 (3) at Air Force (1/13/16)
Steals	1 vs. San José State (12/30/15)
Blocks	2 at Utah Valley (12/10/15)
Minutes	23 vs. Utah (12/22/15)

DE PAULO'S CAREER SUPERLATIVES

Double-Figure Scoring: ---
20-Plus Points: ---
30-Plus Points: ---
5-Plus Rebounds: 3 times
5-Plus Assists: ---
Double-Doubles: ---

INDIVIDUAL GAME-BY-GAME STATISTICS



41

ANTOINA ROBINSON

6-2, Senior, Forward
Dallas, Texas
(Duncanville HS/New Mexico JC)

PTS	REB	FG%	3FG%	FT%	MIN
4.6	4.5	.304	.000	.692	18.5

ROBINSON GAME-BY-GAME

Opponent	MIN	FG	3FG	FT	O-D-T	PF	A	TO	B	S	TP
Westminster	^ 22	2-6	0-0	0-0	4-1-5	1	0	0	1	1	4
Montana State	^ 23	1-6	0-0	2-3	3-4-7	2	1	1	0	0	4
UC Irvine	^ 27	3-7	0-0	2-2	1-4-5	5	1	1	4	1	8
Southern Utah	^ 19	1-7	0-0	0-0	1-2-3	1	0	3	0	0	2
vs. Incarnate Word at Montana	13	3-6	0-0	1-1	0-2-2	4	0	3	1	0	7
Idaho State at Utah	11	2-5	0-0	0-0	0-4-4	3	0	2	1	1	4
Utah Valley at Utah	13	0-4	0-0	1-4	0-5-5	3	0	0	1	1	1
BYU at Arizona	^ 20	2-5	0-0	3-3	2-3-5	3	0	0	1	1	7
at Boise State *											
Air Force *											
at New Mexico *											
at UNLV *											
Wyoming *											
San Diego State *											
at Colorado State *											
New Mexico *											
at Fresno State *											
at Nevada *											
Boise State *											
Colorado State *											
at Wyoming *											
at San Diego State *											
Nevada *											
San José State *											
at Air Force *											
UNLV *											

^ Starter
* Mountain West game

ROBINSON'S SEASON HIGHS

Points	8 vs. UC Irvine (11/17/16)
Rebounds	7 vs. Montana State (11/14/16)
Assists	1 (2) vs. UC Irvine (11/14/16)
Steals	1 (5) at Utah (12/3/16)
Blocks	4 vs. UC Irvine (11/17/16)
Minutes	27 vs. UC Irvine (11/17/16)

ROBINSON'S SEASON SUPERLATIVES

Double-Figure Scoring: ---
20-Plus Points: ---
30-Plus Points: ---
5-Plus Rebounds: 5 times
5-Plus Assists: ---
Double-Doubles: ---

ROBINSON'S CAREER HIGHS

Points	13 vs. Tennessee State (12/19/15)
Rebounds	13 vs. Nevada (3/7/16)
Assists	1 (13) vs. UC Irvine (11/27/16)
Steals	4 vs. Haskell (12/4/15)
Blocks	4 vs. UC Irvine (11/17/16)
Minutes	28 at BYU (11/24/15)

ROBINSON'S CAREER SUPERLATIVES

Double-Figure Scoring: 3 times
20-Plus Points: ---
30-Plus Points: ---
5-Plus Rebounds: 12 times
5-Plus Assists: ---
Double-Doubles: 1 time



44

DEJA MASON

6-4, Sophomore, Center
San Antonio, Texas
(Brennan HS)

PTS	REB	FG%	3FG%	FT%	MIN
3.5	5.3	.345	.000	.667	16.5

MASON GAME-BY-GAME

Opponent	MIN	FG	3FG	FT	O-D-T	PF	A	TO	B	S	TP
Westminster	9	0-2	0-0	0-0	0-1-1	1	0	2	0	0	0
Montana State	13	1-5	0-0	5-6	2-4-6	0	1	1	4	0	7
UC Irvine	16	1-4	0-0	0-0	2-4-6	1	0	1	3	0	2
Southern Utah	14	0-2	0-0	1-2	1-6-7	2	0	1	2	0	1
vs. Incarnate Word at Montana	^ 19	1-3	0-0	0-0	0-8-8	0	2	1	3	0	2
Idaho State at Utah	^ 29	3-5	0-0	0-2	3-4-7	4	0	1	4	2	6
Utah Valley at Utah	^ 20	1-4	0-0	2-2	1-2-3	2	1	1	3	3	4
BYU at Arizona	12	3-4	0-0	0-0	0-4-4	2	0	1	0	0	6
at Boise State *											
Air Force *											
at New Mexico *											
at UNLV *											
Wyoming *											
San Diego State *											
at Colorado State *											
New Mexico *											
at Fresno State *											
at Nevada *											
Boise State *											
Colorado State *											
at Wyoming *											
at San Diego State *											
Nevada *											
San José State *											
at Air Force *											
UNLV *											

^ Starter
* Mountain West game

MASON'S SEASON HIGHS

Points	7 vs. Montana State (11/14/16)
Rebounds	8 vs. Incarnate Word (11/25/16)
Assists	2 vs. Incarnate Word (11/25/16)
Steals	3 vs. Idaho State (12/1/16)
Blocks	4 (2) vs. Montana (11/27/16)
Minutes	29 vs. Montana (11/27/16)

MASON'S SEASON SUPERLATIVES

Double-Figure Scoring: ---
20-Plus Points: ---
30-Plus Points: ---
5-Plus Rebounds: 5 times
5-Plus Assists: ---
Double-Doubles: ---

MASON'S CAREER HIGHS

Points	11 (2) vs. Nevada (2/24/16)
Rebounds	10 vs. Nevada (2/24/16)
Assists	2 (2) vs. Incarnate Word (11/25/16)
Steals	3 vs. Idaho State (12/1/16)
Blocks	8 vs. Boise State (2/3/16)
Minutes	31 vs. Nevada (2/24/16)

MASON'S CAREER SUPERLATIVES

Double-Figure Scoring: 3 times
20-Plus Points: ---
30-Plus Points: ---
5-Plus Rebounds: 16 times
5-Plus Assists: ---
Double-Doubles: 1 time

2016-17 TRENDS

Overall Record	6-2, 0-0 MW
<i>When the Aggies..... they are</i>	
Play day games.....	4-0
Play night games	2-2
Lead at halftime	5-0
Trail at halftime.....	1-2
Are tied at halftime	0-0
Shoot better from the field than opponent	5-1
Shoot worse from the field than opponent.....	1-1
Shoot the same from the field as opponent.....	0-0
Shoot better from three than opponent	4-0
Shoot worse from three than opponent.....	2-2
Shoot the same from three as opponent.....	0-0
Shoot better from the FT line than opponent	4-2
Shoot worse from the FT line than opponent.....	2-0
Shoot the same from the FT line as opponent.....	0-0
Out-rebound opponent	4-0
Are out-rebounded by opponent.....	2-2
Are even in rebounds with opponent	0-0
Commit fewer fouls than opponent.....	3-0
Commit more fouls than opponent.....	3-2
Commit same number of fouls.....	0-0
Have more assists than opponent.....	6-1
Have fewer assists than opponent.....	0-1
Have same number of assists.....	0-0
Have more turnovers than opponent.....	1-1
Have fewer turnovers than opponent.....	4-1
Have same number of turnovers.....	1-0



Utah State's Points Scored/Allowed Summary			
Record When Scoring		Record When Allowing	
0-0	30-39	0-0	
0-0	40-49	3-0	
0-2	50-59	2-0	
4-0	60-69	0-1	
2-0	70-79	0-1	
0-0	80-89	0-0	
0-0	90-99	0-0	
0-0	100+	0-0	

Record When the Scoring Margin is...					
1 (pt.)	2	3	4	5	6
0-0	0-0	0-0	0-0	0-0	0-0
7	8	9	10-15	16-20	20+
0-1	1-0	0-0	2-0	1-1	2-0

Record By Month				
Nov.	Dec.	Jan.	Feb.	March
5-1	1-1	0-0	0-0	0-0

Utah State's Record By Day Of The Week						
Sun.	Mon.	Tues.	Wed.	Thurs.	Fri.	Sat.
1-0	1-0	0-1	0-0	2-0	2-0	0-1

2016-17 Production Summary

	Starters	Bench
	Total/% Team	Total/% Team
Minutes	1003 / 62.4	597 / 37.6
Points	326 / 60.6	201 / 39.4
Rebounds	179 / 55.1	142 / 44.9

2016-17 Miscellaneous Statistics

	Double Figure Games Scoring	20-Pt. Games	Double Figure Reb/Ast	Double Doubles
Bassett	8	0	0/0	0
Brewster	8	6	1/0	0
de Paulo	0	0	0/0	0
Dufficy	7	3	2/0	0
Enders	0	0	0/0	0
Geer	8	0	0/0	0
Jensen	0	0	0/0	0
Klinker	8	0	0/0	0
Mason	8	0	0/0	0
Moore	8	0	0/0	0
Price	0	0	0/0	0
Robinson	8	0	0/0	0
Toole	8	1	0/0	0
E. West	8	2	0/0	0
O. West	8	2	0/0	0

2016-17 COMBINED STATISTICS

RECORD:	OVERALL	HOME	AWAY	NEUTRAL
ALL GAMES	6-2	4-1	1-1	1-0
CONFERENCE	0-0	0-0	0-0	0-0
NON-CONFERENCE	6-2	4-1	1-1	1-0

#	Player	gp-gs	min	avg	Total		3-Point		F-Throw		Rebounds				pf	dq	a	to	blk	stl	pts	avg
					fg-fga	fg%	3fg-fga	3fg%	ft-fta	ft%	off	def	tot	avg								
22	BREWSTER, Rachel	8-8	210	26.3	47-102	.461	8-17	.471	9-11	.818	11	16	27	3.4	26	1	13	16	0	9	111	13.9
05	DUFFICY, Shannon	7-7	191	27.3	24-59	.407	4-10	.400	8-14	.571	25	35	60	8.6	11	1	22	19	4	12	60	8.6
01	WEST, Eliza	8-8	238	29.8	25-64	.391	6-18	.333	10-16	.625	2	22	24	3.0	13	0	33	22	1	19	66	8.3
03	WEST, Olivia	8-0	139	17.4	21-50	.420	10-21	.476	5-8	.625	4	5	9	1.1	20	0	15	11	0	9	57	7.1
02	GEER, Jessie	8-4	160	20.0	20-50	.400	8-27	.296	3-4	.750	8	12	20	2.5	7	0	15	12	1	14	51	6.4
12	BASSETT, Hailey	8-1	103	12.9	14-37	.378	2-6	.333	9-12	.750	15	17	32	4.0	15	1	0	8	7	1	39	4.9
41	ROBINSON, Antoina	8-5	148	18.5	14-46	.304	0-0	.000	9-13	.692	11	25	36	4.5	22	1	2	10	9	5	37	4.6
31	TOOLE, Katie	8-4	128	16.0	15-31	.484	1-3	.333	4-6	.667	8	10	18	2.3	5	0	8	8	1	5	35	4.4
44	MASON, Deja	8-3	132	16.5	10-29	.345	0-0	.000	8-12	.667	9	33	42	5.3	12	0	4	9	19	5	28	3.5
30	MOORE, Dee	8-0	60	7.5	10-20	.500	0-1	.000	5-6	.833	7	11	18	2.3	5	0	2	2	9	0	25	3.1
33	KLINKER, Lizzy	8-0	91	11.4	6-19	.316	0-2	.000	6-10	.600	7	8	15	1.9	12	0	12	5	3	4	18	2.3
Team											7	13	20				1					
Total.....		8	1600		206-507	.406	39-105	.371	76-112	.679	114	207	321	40.1	148	4	126	123	54	83	527	65.9
Opponents.....		8	1600		153-448	.342	43-156	.276	92-143	.643	111	203	314	39.2	133	3	91	155	18	57	441	55.1

TEAM STATISTICS	US	OPP	Date	Opponent	Score	Att.
SCORING	527	441	11/11/16	WESTMINSTER	w 72-49	510
Points per game	65.9	55.1	11/14/16	MONTANA STATE	w 64-56	633
Scoring margin	+10.8	-	11/17/16	UC IRVINE	w 66-52	2487
FIELD GOALS-ATT	206-507	153-448	11/22/16	SOUTHERN UTAH	L 54-70	854
Field goal pct	.406	.342	11/25/16	vs Incarnate Word	w 79-46	256
3 POINT FG-ATT	39-105	43-156	11/27/16	at Montana	w 65-47	2506
3-point FG pct	.371	.276	12/1/16	IDAHO STATE	w 69-56	665
3-pt FG made per game	4.9	5.4	12/03/16	at Utah	L 58-65	1190
FREE THROWS-ATT	76-112	92-143	* - Conference game			
Free throw pct	.679	.643				
F-Throws made per game	9.5	11.5				
REBOUNDS	321	314				
Rebounds per game	40.1	39.2				
Rebounding margin	+0.9	-				
ASSISTS	126	91				
Assists per game	15.8	11.4				
TURNOVERS	123	155				
Turnovers per game	15.4	19.4				
Turnover margin	+4.0	-				
Assist/turnover ratio	1.0	0.6				
STEALS	83	57				
Steals per game	10.4	7.1				
BLOCKS	54	18				
Blocks per game	6.8	2.3				
ATTENDANCE	5149	3952				
Home games-Avg/Game	5-1030	2-1848				
Neutral site-Avg/Game	-	1-256				

Score by Periods	1st	2nd	3rd	4th	Totals
Utah State	145	109	138	135	527
Opponents	106	105	109	121	441

2016-17 GAME-BY-GAME LEADERS

RECORD:	OVERALL	HOME	AWAY	NEUTRAL
ALL GAMES	6-2	4-1	1-1	1-0
CONFERENCE	0-0	0-0	0-0	0-0
NON-CONFERENCE	6-2	4-1	1-1	1-0

Date	Opponent	Score	Att.	High Points	High Rebounds
11/11/16	WESTMINSTER	W 72-49	510	(14)DUFFICY, Shannon	(9)DUFFICY, Shannon
11/14/16	MONTANA STATE	W 64-56	633	(18)BREWSTER, Rachel	(14)DUFFICY, Shannon
11/17/16	UC IRVINE	W 66-52	2487	(16)BREWSTER, Rachel	(6)MASON, Deja (6)BASSETT, Hailey
11/22/16	SOUTHERN UTAH	54-70 L	854	(11)WEST, Eliza	(7)MASON, Deja
11/25/16	vs Incarnate Word	W 79-46	256	(18)BREWSTER, Rachel	(9)DUFFICY, Shannon
11/27/16	at Montana	W 65-47	2506	(18)WEST, Eliza	(14)DUFFICY, Shannon
12/1/16	IDAHO STATE	W 69-56	665	(22)BREWSTER, Rachel	(8)DUFFICY, Shannon
12/03/16	at Utah	58-65 L	1190	(11)DUFFICY, Shannon	(5)BREWSTER, Rachel (5)ROBINSON, Antoina

* - Conference game

Attendance Summary	Games	Attend	Avg/Game
Home	5	5149	1030
Away	2	3696	1848
Neutral	1	256	256
Total	8	9101	1138

2016-17 GAME-BY-GAME STATISTICS

TEAM STATISTICS

Opponent	Date	Score	Total		3-Pointers		Free throws		Rebounds				pf	a	t/o	blk	stl	pts	avg
			fg-fga	pct	3fg-fga	pct	ft-fa	pct	off	def	tot	avg							
WESTMINSTER	11/11/16	72-49 W	29-74	.392	5-12	.417	9-15	.600	26	23	49	49.0	16	19	12	1	16	72	72.0
MONTANA STATE	11/14/16	64-56 W	23-68	.338	1-6	.167	17-23	.739	20	29	49	49.0	16	15	16	8	12	64	68.0
UC IRVINE	11/17/16	66-52 W	29-74	.392	5-16	.313	3-4	.750	16	23	39	45.7	17	20	11	13	14	66	67.3
SOUTHERN UTAH	11/22/16	54-70 L	20-60	.333	7-21	.333	7-9	.778	12	21	33	42.5	16	13	24	6	10	54	64.0
vs Incarnate Word	11/25/16	79-46 W	29-54	.537	5-9	.556	16-21	.762	6	38	44	42.8	18	21	13	8	6	79	67.0
at Montana	11/27/16	65-47 W	27-58	.466	7-17	.412	4-9	.444	10	31	41	42.5	26	12	16	8	9	65	66.7
IDAHO STATE	12/1/16	69-56 W	24-61	.393	7-12	.583	14-24	.583	16	21	37	41.7	19	14	14	7	12	69	67.0
at Utah	12/03/16	58-65 L	25-58	.431	2-12	.167	6-7	.857	8	21	29	40.1	20	12	17	3	4	58	65.9
Utah State		527	206-507	.406	39-105	.371	76-112	.679	114	207	321	40.1	148	126	123	54	83	527	65.9
Opponents		441	153-448	.342	43-156	.276	92-143	.643	111	203	314	39.2	133	91	155	18	57	441	55.1

Games played: 8
Points/game: 65.9
FG Pct: 40.6
3FG Pct: 37.1
FT Pct: 67.9

Rebounds/game: 40.1
Assists/game: 15.8
Turnovers/game: 15.4
Assist/turnover ratio: 1.0
Steals/game: 10.4
Blocks/game: 6.8

2016-17 INDIVIDUAL POINTS-REBOUNDS-ASSISTS

Opponent	Date	Score		01 WEST,ELIZA	02 GEER,JESSI	03 WEST,OLIVI	05 DUFFICY,SH	12 BASSETT,HA	22 BREWSTER,R	30 MOORE,DEE
WESTMINSTER	11/11/16	72-49	w	10-6-3	5-1-2	9-4-4	14-9-3	5-7-0	11-4-3	2-2-1
MONTANA STATE	11/14/16	64-56	w	8-3-3	7-2-0	1-0-1	7-14-3	4-3-0	18-3-2	2-2-0
UC IRVINE	11/17/16	66-52	w	2-4-5	9-1-7	6-0-2	DNP	4-6-0	16-5-1	6-2-0
SOUTHERN UTAH	11/22/16	54-70	L	11-2-4	6-4-2	5-2-1	8-3-2	5-3-0	9-1-3	2-1-0
vs Incarnate Word	11/25/16	79-46	w	6-3-4	4-4-1	14-1-3	10-9-5	6-5-0	18-2-1	8-5-0
at Montana	11/27/16	65-47	w	18-3-3	9-4-2	7-0-4	4-14-1	4-4-0	7-3-0	4-0-0
IDAHO STATE	12/1/16	69-56	w	2-1-7	6-1-0	15-2-0	6-8-3	5-2-0	22-4-2	1-6-1
at Utah	12/03/16	58-65	L	9-2-4	5-3-1	0-0-0	11-3-5	6-2-0	10-5-1	0-0-0

Opponent	Date	Score		31 TOOLE,KATI	33 KLINKER,LI	41 ROBINSON,A	44 MASON,DEJA
WESTMINSTER	11/11/16	72-49	w	6-1-0	6-5-3	4-5-0	0-1-0
MONTANA STATE	11/14/16	64-56	w	2-2-1	4-4-3	4-7-1	7-6-1
UC IRVINE	11/17/16	66-52	w	11-4-3	2-2-1	8-5-1	2-6-0
SOUTHERN UTAH	11/22/16	54-70	L	5-0-1	0-2-0	2-3-0	1-7-0
vs Incarnate Word	11/25/16	79-46	w	2-3-1	2-0-4	7-2-0	2-8-2
at Montana	11/27/16	65-47	w	0-1-1	2-1-1	4-4-0	6-7-0
IDAHO STATE	12/1/16	69-56	w	7-4-0	0-1-0	1-5-0	4-3-1
at Utah	12/03/16	58-65	L	2-3-1	2-0-0	7-5-0	6-4-0

2016-17 TEAM COMPARISON

Opponent	1st	2nd	Score	Mar	Total FG	FG Pct	3-Pointers	3FG Pct	Free Throws	FT Pct	Rebounds	Assist	T/Over	Block	Steal	Fouls
WESTMINSTER	39/19	33/30	72-49	+23	29-74/19-49	.392/.388	5-12/7-21	.417/.333	9-15/4-7	.600/.571	49/29 +20	19/12	12/22	1/2	16/4	16/15
MONTANA STATE	25/29	39/27	64-56	+8	23-68/22-62	.338/.355	1-6/4-21	.167/.190	17-23/8-14	.739/.571	49/41 +8	15/10	16/21	8/4	12/6	16/24
UC IRVINE	35/22	31/30	66-52	+14	29-74/19-56	.392/.339	5-16/5-15	.313/.333	3-4/9-14	.750/.643	39/45 (6)	20/10	11/23	13/2	14/7	17/11
SOUTHERN UTAH	23/39	31/31	54-70	(16)	20-60/27-58	.333/.466	7-21/7-16	.333/.438	7-9/9-17	.778/.529	33/43 (10)	13/18	24/20	6/1	10/11	16/14
Incarnate Word	43/24	36/22	79-46	+33	29-54/15-61	.537/.246	5-9/6-26	.556/.231	16-21/10-14	.762/.714	44/33 +11	21/9	13/13	8/0	6/4	18/21
Montana	29/21	36/26	65-47	+18	27-58/11-51	.466/.216	7-17/3-15	.412/.200	4-9/22-33	.444/.667	41/37 +4	12/10	16/14	8/2	9/6	26/13
IDAHO STATE	32/24	37/32	69-56	+13	24-61/18-53	.393/.340	7-12/6-22	.583/.273	14-24/14-20	.583/.700	37/42 (5)	14/11	14/24	7/5	12/6	19/20
Utah	28/33	30/32	58-65	(7)	25-58/22-58	.431/.379	2-12/5-20	.167/.250	6-7/16-24	.857/.667	29/44 (15)	12/11	17/18	3/2	4/13	20/15

Note: Game totals are displayed in the format TEAM/OPPONENT for each category

2016-17 GAME HIGHS

Opponent	Date	Score	Points	Rebounds	Assists	Steals	Blocked shots
WESTMINSTER	11/11/16	72-49	14-DUFFICY, Shanno	9-DUFFICY, Shannon	4-WEST, Olivia	4-WEST, Eliza	1-ROBINSON, Antoin
MONTANA STATE	11/14/16	64-56	18-BREWSTER, Rach	14-DUFFICY, Shanno	3-DUFFICY, Shannon KLINKER, Lizzy WEST, Eliza	4-GEER, Jessie	4-MASON, Deja
UC IRVINE	11/17/16	66-52	16-BREWSTER, Rach	6-BASSETT, Hailey MASON, Deja	7-GEER, Jessie	4-GEER, Jessie WEST, Eliza	4-ROBINSON, Antoin MOORE, Dee
SOUTHERN UTAH	11/22/16	54-70	11-WEST, Eliza	7-MASON, Deja	4-WEST, Eliza	3-BREWSTER, Rach	2-MASON, Deja
vs Incarnate Word	11/25/16	79-46	18-BREWSTER, Rach	9-DUFFICY, Shannon	5-DUFFICY, Shannon	3-WEST, Eliza	3-MASON, Deja
at Montana	11/27/16	65-47	18-WEST, Eliza	14-DUFFICY, Shanno	4-WEST, Olivia	2-WEST, Eliza MASON, Deja BREWSTER, Rache	4-MASON, Deja
IDAHO STATE	12/1/16	69-56	22-BREWSTER, Rach	8-DUFFICY, Shannon	7-WEST, Eliza	3-WEST, Olivia MASON, Deja	3-MASON, Deja
at Utah	12/03/16	58-65	11-DUFFICY, Shanno	5-ROBINSON, Antoin BREWSTER, Rache	5-DUFFICY, Shannon	2-WEST, Eliza	1-BASSETT, Hailey ROBINSON, Antoin DUFFICY, Shannon

2016-17 BOX SCORES

Exhibition Game Utah State 63, CSU-Pueblo 54

Official Basketball Box Score -- Game Totals -- Final Statistics
CSU-Pueblo vs Utah State
11/6/16 2:00 pm at Logan, Utah (Dee Glen Smith Spectrum)

CSU-Pueblo 54 • 0-0

#	Player	Total			3-Ptr			Rebounds			PF	TP	A	TO	Blk	Stl	Min
		FG-FGA	FG-FGA	FT-FTA	FG-FGA	FG-FGA	FT-FTA	Off	Def	Tot							
33	Lauren Heyn	f	1-3	0-0	0-0	2	2	4	1	2	2	2	0	0	0	29	
42	Molly Rohrer	c	4-6	0-0	0-0	1	3	4	2	8	0	5	1	1	23		
05	Katie Cunningham	g	1-3	0-2	2-4	3	6	9	3	4	1	4	0	2	31		
14	Taylor Long	g	2-8	0-2	1-1	0	0	0	2	5	2	2	0	1	18		
32	Tulleisu Anderson	g	2-15	2-9	2-2	1	2	3	2	8	1	7	1	0	27		
04	Jaszymn Johnson	g	3-12	2-6	2-2	2	2	4	3	10	2	2	1	1	28		
11	Ana Gurau	g	1-2	0-1	0-0	0	3	3	1	2	3	3	0	1	14		
12	Maddie Beagley	g	1-2	0-0	0-0	2	1	3	1	2	0	1	0	0	11		
13	Khiya Adams	g	0-0	0-0	0-0	0	0	0	0	0	0	0	0	0	2		
20	Angie Moore	g	5-6	1-1	2-2	2	4	6	1	13	0	0	1	1	17		
34	Katie Jones	g	0-0	0-0	0-0	0	1	1	0	0	0	0	0	0	0+		
	Team					0	1	1									
	Totals		20-57	5-21	9-11	13	25	38	16	54	11	26	4	7	200		

1st FG %:	7-15	46.7%	2nd:	5-13	38.5%	3rd:	2-13	15.4%	4th:	6-16	37.5%	Game:	20-57	35.1%	Deadball	
3FG %:	2-4	50.0%		0-3	0.0%		0-5	0.0%		3-9	33.3%		5-21	23.8%	Rebounds	2
FT %:	1-1	100.0%		0-0	0.0%		6-6	100.0%		2-4	50.0%		9-11	81.8%		

Utah State 63 • 0-0

#	Player	Total			3-Ptr			Rebounds			PF	TP	A	TO	Blk	Stl	Min
		FG-FGA	FG-FGA	FT-FTA	FG-FGA	FG-FGA	FT-FTA	Off	Def	Tot							
05	DUFFICY, Shannon	f	5-12	1-2	0-0	7	3	10	0	11	2	2	1	0	32		
41	ROBINSON, Antoina	f	4-7	0-0	2-2	0	4	4	4	10	0	1	1	4	23		
01	WEST, Eliza	g	4-10	0-1	4-6	1	2	3	1	12	8	7	0	3	35		
22	BREWSTER, Rachel	g	6-18	0-2	0-0	0	3	3	0	12	3	2	0	5	33		
31	TOOLE, Katie	g	4-6	0-1	1-1	0	2	2	2	9	0	2	0	3	19		
02	GEER, Jessie	g	3-4	1-2	0-0	0	2	2	1	7	1	2	0	0	15		
03	WEST, Olivia	g	1-4	0-0	0-0	0	0	0	1	2	0	0	0	0	12		
12	BASSETT, Hailey	g	0-0	0-0	0-0	0	0	0	0	0	0	1	0	0	8		
30	MOORE, Dee	g	0-1	0-0	0-0	1	0	1	0	0	0	0	0	0	4		
33	KLINKER, Lizzy	g	0-1	0-0	0-0	0	1	1	0	0	0	0	0	1	6		
44	MASON, Deja	g	0-1	0-0	0-2	2	4	6	3	0	0	0	2	0	13		
	Team					1	3	4									
	Totals		27-64	2-8	7-11	12	24	36	12	63	14	17	4	16	200		

1st FG %:	3-15	20.0%	2nd:	8-17	47.1%	3rd:	7-21	33.3%	4th:	9-11	81.8%	Game:	27-64	42.2%	Deadball	
3FG %:	0-2	0.0%		0-0	0.0%		1-1	100.0%		1-1	100.0%		2-8	25.0%	Rebounds	4
FT %:	4-8	50.0%		0-0	0.0%		0-0	0.0%		3-3	100.0%		7-11	63.6%		

Officials: R-Rick Thorne, U1-AV Cervantes, U2-Teresa Olsen
Technical fouls: CSU-Pueblo-None. Utah State-None.
Attendance: 4

Score by periods	1st	2nd	3rd	4th	Total
CSU-Pueblo	17	10	10	17	54
Utah State	10	16	15	22	63

Last FG - CSUP 4th-02:36, US 4th-00:38.
Largest lead - CSUP by 7 1st-00:47, US by 9 4th-00:38.
CSUP led for 13:11. US led for 24:45. Game was tied for 02:04.

Score tied - 1 time.
Lead changed - 6 times.

Game 1 Utah State 72, Westminster 49

Official Basketball Box Score -- Game Totals -- Final Statistics
Westminster vs Utah State
11/11/16 12:00 pm at Logan, Utah (Dee Glen Smith Spectrum)

Westminster 49 • 0-0

#	Player	Total			3-Ptr			Rebounds			PF	TP	A	TO	Blk	Stl	Min
		FG-FGA	FG-FGA	FT-FTA	FG-FGA	FG-FGA	FT-FTA	Off	Def	Tot							
05	Syndee Taylor	f	4-7	2-3	1-1	1	5	6	4	11	3	3	0	0	29		
30	Whitni Sryett	f	4-5	1-1	0-0	2	0	2	1	9	0	0	0	0	26		
04	Aubrie Vale	g	3-8	3-6	0-2	1	8	9	0	9	2	2	0	1	32		
13	Riley Reidhead	g	0-5	0-3	0-0	2	0	2	0	0	1	0	0	0	17		
25	Denise Gonzalez	g	4-12	1-4	3-4	1	2	3	3	12	4	6	0	1	27		
12	Scillee Williams	g	1-2	0-1	0-0	0	1	1	0	2	0	2	0	0	11		
15	Lancee Whetman	g	0-1	0-0	0-0	0	1	1	2	0	1	1	0	0	12		
20	Janessa Aukward	g	0-3	0-2	0-0	0	0	0	1	0	0	2	0	0	9		
22	KC Gubler	g	2-3	0-0	0-0	1	1	2	1	4	0	2	1	1	13		
23	Max Shelley	g	1-3	0-1	0-0	0	2	2	3	2	1	2	1	1	22		
24	Elsie Carpenter	g	0-0	0-0	0-0	0	0	0	0	0	0	0	0	0	0+		
32	Hillary Weixler	g	0-0	0-0	0-0	0	0	0	0	0	0	0	0	0	2		
	Team					0	1	1									
	Totals		19-49	7-21	4-7	8	21	29	15	49	12	22	2	4	200		

1st FG %:	5-12	41.7%	2nd:	2-10	20.0%	3rd:	6-15	40.0%	4th:	6-12	50.0%	Game:	19-49	38.8%	Deadball	
3FG %:	2-5	40.0%		1-5	20.0%		3-8	37.5%		1-3	33.3%		7-21	33.3%	Rebounds	2
FT %:	2-2	100.0%		0-2	0.0%		0-0	0.0%		2-3	66.7%		4-7	57.1%		

Utah State 72 • 1-0

#	Player	Total			3-Ptr			Rebounds			PF	TP	A	TO	Blk	Stl	Min
		FG-FGA	FG-FGA	FT-FTA	FG-FGA	FG-FGA	FT-FTA	Off	Def	Tot							
05	DUFFICY, Shannon	f	6-15	0-1	2-5	8	1	9	0	14	3	0	0	3	26		
41	ROBINSON, Antoina	f	2-6	0-0	0-0	4	1	5	1	4	0	0	1	1	22		
01	WEST, Eliza	g	4-11	1-3	1-2	0	6	6	3	10	3	2	0	4	26		
22	BREWSTER, Rachel	g	5-11	1-2	0-0	2	2	4	1	11	3	2	0	3	21		
31	TOOLE, Katie	g	3-6	0-1	0-0	1	0	1	1	6	0	1	0	1	19		
02	GEER, Jessie	g	2-5	1-2	0-0	1	0	1	1	5	2	2	0	2	19		
03	WEST, Olivia	g	4-8	1-2	0-0	2	2	4	4	9	4	0	2	2	16		
12	BASSETT, Hailey	g	1-5	1-1	2-4	3	4	7	2	5	0	2	0	0	16		
30	MOORE, Dee	g	0-2	0-0	0-2	1	1	2	1	2	1	0	0	0	9		
33	KLINKER, Lizzy	g	2-3	0-0	2-2	2	3	5	1	6	3	0	0	0	17		
44	MASON, Deja	g	0-2	0-0	0-0	0	1	1	0	0	0	2	0	0	9		
	Team					2	2	4									
	Totals		29-74	5-12	9-15	26	23	49	16	72	19	12	1	16	200		

1st FG %:	10-17	58.8%	2nd:	7-19	36.8%	3rd:	7-22	31.8%	4th:	5-16	31.3%	Game:	29-74	39.2%	Deadball	
3FG %:	3-4	75.0%		0-3	0.0%		1-2	50.0%		1-3	33.3%		5-12	41.7%	Rebounds	4
FT %:	1-2	50.0%		0-3	0.0%		1-4	25.0%		6-6	100.0%		9-15	60.0%		

Officials: R-Laura Rahe, U1-Ken Sowby, U2-Jenna Rneau
Technical fouls: Westminster-None. Utah State-None.
Attendance: 510

Score by periods	1st	2nd	3rd	4th	Total
Westminster	14	5	15	15	49
Utah State	24	15	16	17	72

Last FG - WC 4th-01:46, US 4th-00:31.
Largest lead - WC None, US by 24 4th-00:31.
WC led for 00:00. US led for 39:04. Game was tied for 00:46.

Score tied - 2 times.
Lead changed - 0 times.

Game 2 Utah State 64, Montana State 56

Official Basketball Box Score -- Game Totals -- Final Statistics
Montana State vs Utah State
11/14/16 8:15 p.m. at Logan, Utah (Dee Glen Smith Spectrum)

Montana State 56 • 0-2

#	Player	Total			3-Ptr			Rebounds			PF	TP	A	TO	Blk	Stl	Min
		FG-FGA	FG-FGA	FT-FTA	FG-FGA	FG-FGA	FT-FTA	Off	Def	Tot							
03	LAI, Annika	f	6-11	0-1	1-3	3	6	9	2	13	2	0	2	0	35		
44	BRAXTON, Blaire	f	4-10	0-0	0-0	0	6	6	3	8	0	1	1	1	34		
02	FERRIS, Peyton	g	4-12	0-2	4-7	4	2	6	4	12	2	5	1	1	27		
12	JUNKERMIER, Delany	g	1-8	0-5	0-0	1	1	2	3	2	0	1	0	2	29		
23	CAUDILL, Hannah	g	2-4	2-4	0-0	0	0	0	5	6	5	1	0	1	26		
10																	

2016-17 BOX SCORES

Game 4

Southern Utah 70, Utah State 54

Official Basketball Box Score -- Game Totals -- Final Statistics
Southern Utah vs Utah State
11/22/16 5:00 pm at Logan, Utah (Dee Glen Smith Spectrum)

Southern Utah 70 • 3-0

#	Player	Total			3-Ptr			Rebounds			PF	TP	A	TO	Blk	Stl	Min
		FG-FGA	FG-FGA	FT-FTA	Off	Def	Tot	Off	Def	Tot							
43	Richardson, Jessica	f	5-9	0-0	0-2	1	4	5	2	10	1	1	0	1	29		
21	Johnson, Whitney	c	1-2	0-0	2-4	3	4	7	4	4	0	1	0	2	26		
02	Cardenas, Rebecca	g	3-7	1-1	5-5	3	4	7	1	12	9	3	0	3	34		
14	Reid, Breanu	g	2-7	1-5	0-2	0	3	3	1	5	2	1	0	2	17		
55	Smith, Jamie	g	8-16	3-8	2-4	0	1	1	0	21	1	2	0	0	27		
15	Johnson, Kiana	g	1-1	0-0	0-0	0	2	2	0	2	0	0	0	0	4		
20	Doman, Skylee	g	3-6	1-1	0-0	0	5	5	3	7	4	0	1	1	32		
22	Dunlap, Tiffany	g	0-3	0-0	0-0	0	0	0	0	0	0	2	0	0	2		
24	McDonald, Tiarra	g	1-2	1-1	0-0	0	1	1	1	3	1	0	0	0	9		
30	Herrud, Maren	g	0-0	0-0	0-0	0	0	0	0	0	0	0	0	0	2		
40	Frandsen, Darri	g	3-5	0-0	0-0	4	4	8	2	6	0	8	0	2	18		
	Team					2	2	4									
	Totals		27-58	7-16	9-17	13	30	43	14	70	18	20	1	11	200		

1st - FG %:	7-15	46.7%	2nd:	9-14	64.3%	3rd:	5-16	31.3%	4th:	6-13	46.2%	Game:	27-58	46.6%	Deadball
3FG %:	3-6	50.0%		1-1	100.0%		0-5	0.0%		7-16	43.8%				Rebounds
FT %:	2-2	100.0%		1-2	50.0%		3-7	42.9%		3-6	50.0%				5

Utah State 54 • 3-1

#	Player	Total			3-Ptr			Rebounds			PF	TP	A	TO	Blk	Stl	Min
		FG-FGA	FG-FGA	FT-FTA	Off	Def	Tot	Off	Def	Tot							
05	DUFFICY, Shannon	f	3-5	1-3	1-1	1	2	3	1	8	2	5	1	1	29		
41	ROBINSON, Antoina	f	1-7	0-0	0-0	1	2	3	1	2	0	3	0	0	19		
01	WEST, Eliza	g	4-7	3-3	0-0	0	2	2	11	4	2	1	2	29			
22	BREWSTER, Rachel	g	4-14	1-4	0-0	1	0	1	3	9	3	4	0	3	25		
31	TOOLE, Katie	g	2-5	1-2	0-0	0	0	0	0	5	1	3	1	1	17		
02	GEER, Jessie	g	2-7	0-4	2-2	3	1	4	1	6	2	3	0	2	20		
03	WEST, Olivia	g	2-8	1-5	0-0	0	2	2	4	5	1	0	0	1	23		
12	BASSETT, Hailey	g	1-2	0-0	3-4	1	2	3	2	5	0	2	1	0	13		
30	MOORE, Dee	g	1-2	0-0	0-0	1	0	1	0	2	0	0	0	0	4		
33	KLINKER, Lizzy	g	0-1	0-0	0-0	1	1	2	0	0	1	0	0	0	7		
44	MASON, Deja	g	0-2	0-0	1-2	1	6	7	2	1	0	1	2	0	14		
	Team					2	3	5									
	Totals		20-60	7-21	7-9	12	21	33	16	54	13	24	6	10	200		

1st - FG %:	4-14	28.6%	2nd:	4-16	25.0%	3rd:	8-18	44.4%	4th:	4-12	33.3%	Game:	20-60	33.3%	Deadball
3FG %:	2-6	33.3%		1-3	33.3%		3-7	42.9%		1-5	20.0%				Rebounds
FT %:	3-4	75.0%		1-1	100.0%		0-0	0.0%		3-4	75.0%				0

Officials: R-Lisa Jones, U1-Kyle Bacon, U2-Michael Price
 Technical fouls: Southern Utah-None. Utah State-None.
 Attendance: 854

Score by periods	1st	2nd	3rd	4th	Total
Southern Utah	19	20	13	18	70
Utah State	13	10	19	12	54

Points	In	Off	2nd	Fast	Bench
Paint	T/O	Chance	Break		
SUU	18	20	1	16	18
US	22	13	8	10	19

Score tied - 1 time.
 Largest lead - SUU by 21 4th-02:05, US by 3 1st-09:43.
 SUU led for 36:45. US led for 01:06. Game was tied for 02:08.

Game 5

Utah State 79, Incarnate Word 46

Official Basketball Box Score -- Game Totals -- Final Statistics
Utah State vs Incarnate Word
11/25/16 2:00 pm at Missoula, Mont. (Dahlberg Arena)

Utah State 79 • 4-1

#	Player	Total			3-Ptr			Rebounds			PF	TP	A	TO	Blk	Stl	Min
		FG-FGA	FG-FGA	FT-FTA	Off	Def	Tot	Off	Def	Tot							
05	DUFFICY, Shannon	f	3-7	2-2	2-4	2	7	9	1	10	5	2	0	2	20		
44	MASON, Deja	c	1-3	0-0	0-0	0	8	8	0	2	2	1	3	0	19		
01	WEST, Eliza	g	0-3	0-0	6-6	0	3	3	1	6	4	0	0	3	20		
02	GEER, Jessie	g	2-6	0-1	0-0	0	4	4	0	4	1	1	0	0	23		
22	BREWSTER, Rachel	g	8-12	2-2	0-0	0	2	2	2	18	1	1	0	0	24		
03	WEST, Olivia	g	5-7	1-3	3-4	0	1	1	4	14	3	3	0	1	22		
12	BASSETT, Hailey	g	3-5	0-0	0-0	0	2	3	5	2	6	0	1	2	16		
30	MOORE, Dee	g	3-3	0-0	2-2	2	3	5	1	8	0	0	1	0	12		
31	TOOLE, Katie	g	1-1	0-0	0-0	0	3	3	0	2	1	1	0	0	18		
33	KLINKER, Lizzy	g	0-1	0-1	2-4	0	0	0	3	2	4	0	1	0	13		
41	ROBINSON, Antoina	g	3-6	0-0	1-1	0	2	2	4	7	0	3	1	0	13		
	Team					0	2	2									
	Totals		29-54	5-9	16-21	6	38	44	18	79	21	13	8	6	200		

1st - FG %:	6-13	46.2%	2nd:	11-15	73.3%	3rd:	6-13	46.2%	4th:	6-13	46.2%	Game:	29-54	53.7%	Deadball
3FG %:	1-2	50.0%		3-5	60.0%		0-0	0.0%		1-2	50.0%				Rebounds
FT %:	3-5	60.0%		2-2	100.0%		4-6	66.7%		7-8	87.5%				2

Incarnate Word 46 • 0-4

#	Player	Total			3-Ptr			Rebounds			PF	TP	A	TO	Blk	Stl	Min
		FG-FGA	FG-FGA	FT-FTA	Off	Def	Tot	Off	Def	Tot							
23	Garcia Paunero, Celia	f	2-11	0-4	0-0	0	4	4	2	4	1	0	0	0	30		
00	Berry, Cheyenne	g	0-3	0-1	1-2	1	0	1	0	1	1	2	0	0	20		
10	Frias, Haley	g	5-12	4-10	0-0	0	6	6	0	14	1	1	0	1	34		
11	Robinson, Imani	g	3-8	1-3	4-4	1	3	4	5	11	3	4	0	1	28		
12	Merritt, Melina	g	1-5	0-2	0-0	0	0	0	4	2	2	1	0	0	17		
02	Ramirez, Cassandra	g	0-4	0-3	0-0	3	3	6	3	0	1	0	0	0	12		
03	Busby-Leija, Alexandr	g	4-9	1-2	1-2	1	1	2	1	2	10	0	2	0	23		
04	Ajeto, Tanjunique	g	0-4	0-1	0-2	1	3	4	1	0	0	1	0	0	13		
02	McBride, Charmaine	g	0-2	0-0	2-2	0	0	0	2	2	0	1	0	1	4		
42	Cook, Courtney	g	0-3	0-0	2-2	2	1	3	2	2	0	1	0	1	19		
	Team					2	1	3									
	Totals		15-61	6-26	10-14	11	22	33	21	46	9	13	0	4	200		

1st - FG %:	3-14	21.4%	2nd:	7-15	46.7%	3rd:	2-12	16.7%	4th:	3-20	15.0%	Game:	15-61	24.6%	Deadball
3FG %:	0-3	0.0%		2-7	28.6%		2-6	33.3%		2-10	20.0%				Rebounds
FT %:	2-2	100.0%		0-0	0.0%		5-6	83.3%		3-6	50.0%				1

Officials: Laura Sundheim, Sydney Mott, Darla Foutz
 Technical fouls: Utah State-None. Incarnate Word-None.
 Attendance: 256

Score by periods	1st	2nd	3rd	4th	Total
Utah State	16	27	16	20	79
Incarnate Word	8	16	11	11	46

Score tied - 1 time.
 Largest lead - US by 33 4th-00:51, UIW None.
 US led for 38:42. UIW led for 00:00. Game was tied for 00:57.

Game 6

Utah State 65, Montana 47

Official Basketball Box Score -- Game Totals -- Final Statistics
Utah State vs Montana
11/27/16 2:00 pm at Missoula, Mont. (Dahlberg Arena)

Utah State 65 • 5-1

#	Player	Total			3-Ptr			Rebounds			PF	TP	A	TO	Blk	Stl	Min
		FG-FGA	FG-FGA	FT-FTA	Off	Def	Tot	Off	Def	Tot							
05	DUFFICY, Shannon	f	2-6	0-1	0-0	5	9	14	5	4	1	4	0	1	26		
44	MASON, Deja	c	3-5	0-0	0-2	3	4	7	4	6	0	1	4	2	29		
01	WEST, Eliza	g	8-14	2-5	0-0	0	3	3	2	18	3	0	0	2	35		
02	GEER, Jessie	g	3-10	3-8	0-0	2	2	4	1	9	2	0	1	1	26		
22	BREWSTER, Rachel	g	2-6	1-1	2-3	0	3	3	4	7	0	2	0	2	25		
03	WEST, Olivia	g	3-4	1-2	0-0	0	0	0	0	7	4	1	0	0	18		
12	BASSETT, Hailey	g	1-3	0-0	2-2	0	4	4	5	4	0	1	1	0	9		
30	MOORE, Dee	g	2-2	0-0	0-0	0	0	0	0	4	0	1	0	0	5		
31	TOOLE, Katie	g	0-2	0-0	0-0	0	1	1	0	1	0	2	0	0	8		
33	KLINKER, Lizzy	g	1-1	0-0	0-2	0	1	1	1	2	1	2	1	0	8		
41	ROBINSON, Antoina	g	2-5	0-0	0-0	0	4	4	3	4	0	2	1	1	11		
	Team					0	0	0									
	Totals		27-58	7-17	4-9	10	31	41	26	65	12	16	8	9	200		

1st - FG %:	8-15	53.3%	2nd:	5-11	45.5%	3rd:	8-18	44.4%	4th:	6-14	42.9%	Game:	27-58	46.6%	Deadball
3FG %:	1-4	25.0%		0-1	0										

2016-17 BOX SCORES

Game 8 Utah 65, Utah State 58

Game 9 Utah State vs. Utah Valley

Official Basketball Box Score -- Game Totals -- Final Statistics Utah State vs Utah 12/03/16 2 p.m. MT at Salt Lake City (Huntsman Center)

Utah State 58 • 6-2

#	Player	Total			3-Ptr			Rebounds			PF	TP	A	TO	Blk	Stl	Min
		FG-FGA	FG-FGA	FT-FTA	FG-FGA	FG-FGA	FT-FTA	Off	Def	Tot							
05	DUFFICY, Shannon	f	5-12	1-3	0-0	2	1	3	0	11	5	3	1	1		30	
41	ROBINSON, Antoina	f	2-5	0-0	3-3	2	3	5	3	7	0	0	1	1		20	
01	WEST, Eliza	g	4-9	0-2	1-2	0	2	2	1	9	4	8	0	2		38	
02	GEER, Jessie	g	2-7	1-5	0-0	0	3	3	2	5	1	1	0	0		20	
22	BREWSTER, Rachel	g	5-8	0-0	0-0	1	4	5	5	10	1	1	0	0		21	
02	WEST, Olivia	g	0-6	0-1	0-0	0	0	0	4	0	0	0	0	0		25	
12	BASSETT, Hailey	g	2-4	0-1	2-2	1	1	2	2	6	0	1	1	0		15	
30	MOORE, Dee	g	0-1	0-0	0-0	0	0	0	0	0	0	0	0	0		3	
31	TOOLE, Katie	g	1-1	0-0	0-0	1	2	3	1	2	1	1	0	0		10	
33	KLINKER, Lizzy	g	1-1	0-0	0-0	0	0	0	0	2	0	1	0	0		6	
44	MASON, Deja	g	3-4	0-0	0-0	0	4	4	2	6	0	1	0	0		12	
Team						1	1	2									
Totals			25-58	2-12	6-7	8	21	29	20	58	12	17	3	4		200	

1st - FG %:	9-18	50.0%	2nd: 4-13	30.8%	3rd: 5-13	38.5%	4th: 7-14	50.0%	Game: 25-58	43.1%	Deadball
3FG %:	1-3	33.3%	0-2	0.0%	0-3	0.0%	1-4	25.0%	2-12	16.7%	Rebounds
FT %:	0-0	0.0%	1-2	50.0%	5-5	100.0%	0-0	0.0%	6-7	85.7%	1

Utah 65 • 7-0

#	Player	Total			3-Ptr			Rebounds			PF	TP	A	TO	Blk	Stl	Min
		FG-FGA	FG-FGA	FT-FTA	FG-FGA	FG-FGA	FT-FTA	Off	Def	Tot							
12	Potter, Emily	f	4-6	0-0	2-2	1	7	8	3	10	0	2	2	5		31	
14	Crozon, Paige	f	4-10	2-6	5-8	1	3	4	2	15	0	2	0	1		33	
32	Bocclair, Tanaeya	f	4-10	1-2	5-8	3	4	7	3	14	2	2	0	1		26	
03	Nawahine, Malia	g	4-13	2-5	2-4	3	4	7	2	12	1	1	0	1		35	
11	Bean, Erika	g	1-4	0-2	0-0	0	0	0	1	2	5	5	0	5		31	
00	Moore, Kiana	g	0-2	0-1	0-0	0	2	2	1	0	2	1	0	0		9	
10	Jacobs, Megan	g	3-3	0-0	0-0	1	0	1	0	6	0	3	0	0		7	
23	Provo, Daneesha	g	1-7	0-3	2-2	3	2	5	2	4	1	2	0	0		16	
24	Clark, Tilar	g	0-2	0-1	0-0	1	0	1	1	0	0	0	0	0		3	
33	Fatuesi, Joeseta	g	1-1	0-0	0-0	1	0	1	0	2	0	0	0	0		9	
Team						5	3	8									
Totals			22-58	5-20	16-24	19	25	44	15	65	11	18	2	13		200	

1st - FG %:	8-20	40.0%	2nd: 4-13	30.8%	3rd: 5-13	38.5%	4th: 5-12	41.7%	Game: 22-58	37.9%	Deadball
3FG %:	2-6	33.3%	0-7	0.0%	2-4	50.0%	1-3	33.3%	5-20	25.0%	Rebounds
FT %:	2-2	100.0%	5-6	83.3%	2-6	33.3%	7-10	70.0%	16-24	66.7%	4

Officials: Michael Price, Kenneth Nash, Paul Patterson
 Technical fouls: Utah State-None. Utah-None.
 Attendance: 1190

Score by periods	1st	2nd	3rd	4th	Total	Points	In	Off	2nd	Fast	Bench
Utah State	19	9	15	15	58	US	40	11	7	4	16
Utah	20	13	14	18	65	UTAH	30	21	13	10	12

Last FG - US 4th-00:42, UTAH 4th-03:37.
 Largest lead - US by 7 1st-07:14, UTAH by 9 2nd-04:36.
 US led for 07:09. UTAH led for 31:58. Game was tied for 00:53.
 Score tied - 0 times.
 Lead changed - 5 times.

Game 10 Utah State vs. BYU

Game 11 Utah State at Arizona

HEAD COACH JERRY FINKBEINER



JERRY FINKBEINER

Head Coach
Fifth Season
Southern Nazarene, '80

USU Record: 61-72 (.462), 5 years
Overall Record: 535-314 (.638), 28 years

Jerry Finkbeiner is in his fifth season as the head women's basketball coach at Utah State.

Finkbeiner (pronounced Fink-by-ner) was named the ninth head coach in USU program history on April 26, 2012. He is the second male coach in Utah State history, joining Bob Corbin, who was the Aggies' coach from 1984-86. Finkbeiner is only the second USU coach since the reinstatement of the program in 2003 when Raegan Pebley took over.

Overall, Finkbeiner has a 529-312 (.629) record in 27 years as a collegiate head coach, including his time at Utah State, Oral Roberts (1996-2013) and Southern Nazarene (1991-96). He also ranks 24th in the nation among active coaches with his 529 career wins.

Finkbeiner coached the 2015-16 squad to a 14-17 record, including an 8-10 Mountain West ledger. The Aggies finished seventh in the league, advancing to the second round of the conference tournament. Guard Funda Nakkasoglu earned first-team all-Mountain West honors, while guard Rachel Brewster was named to the all-Freshman team.

Off the court, seven Aggies earned academic all-Mountain West honors with another six being named Mountain West Scholar-Athletes.

In 2014-15, Finkbeiner coached the Aggies to an 8-23 record, going 5-13 in Mountain West play. That year, Finkbeiner led guard Funda Nakkasoglu to the Mountain West Freshman of the Year award. Additionally, Nakkasoglu earned honorable mention all-conference accolades. At the conclusion of the season, senior forward Franny Vaalu became the second of Finkbeiner's players to sign a professional contract, playing for the Wolfpack in Wolfenbüttel, Germany.

In the classroom, four players earned academic all-Mountain West honors, while three were named Mountain West Scholar-Athletes.

During the summer of 2015, Finkbeiner took the Aggie women on an eight-day trip to the Yucatán Peninsula of Mexico. On the trip, the team played against local club and university teams, hosted coaches and children's clinics

and toured the sights.

In the 2013-14 season, Finkbeiner led the Aggies to a 15-16 overall record, while going 8-10 in league play in their first year in the Mountain West. The team advanced to the quarterfinals of the Mountain West Championships, falling to Colorado State.

That year, Finkbeiner coached guard Jennifer Schlott to several accolades and records. Schlott finished the year third in the nation in scoring with 26.2 points per game. She was named the Mountain West Player of the Year and became USU's first-ever AP All-American, earning honorable mention accolades. She became the all-time leading scorer at Utah State, ending her career with 1,556 points. Schlott was invited to a WNBA training camp with the Indiana Fever, before signing a professional contract to play for Tapiolan Honka in Finland.

Off the court, the 2013-14 Aggies also succeeded academically. Six student-athletes received academic all-Mountain West honors, while two were named Mountain West Scholar-Athletes.

In Finkbeiner's debut season in 2012-13, the Aggies achieved an 18-14 record. USU finished second in the Western Athletic Conference standings for the second-straight season with a 14-4 mark. Under the direction of Finkbeiner, Utah State advanced to the postseason for the third-straight season, as the Aggies played in the Women's Basketball Invitational. USU finished the season second in the nation in free throw percentage with a school and WAC record 80.1 percent. Three players were honored by the WAC as Devyn Christensen earned first-team honors, while Jennifer Schlott and Jenna Johnson earned second and third-team honors, respectively.

The Aggies also found success in the classroom under Finkbeiner as five players earned academic all-WAC honors.

Finkbeiner came to Utah State from Oral Roberts in Tulsa, Okla., where he spent 16 years as head coach. During his tenure at ORU, the Golden Eagles averaged 17 wins per season and advanced to postseason play eight times with five trips to the NCAA Tournament and

three appearances in the WNIT.

As the head coach at Oral Roberts, Finkbeiner led the Golden Eagles to seven Summit League regular season and tournament titles and six 20-win seasons. At ORU, Finkbeiner coached five All-Americans, eight conference players of the year, five conference newcomers of the year and 26 all-conference selections. He was named conference coach of the year twice during his ORU tenure.

In his six years prior to ORU, Finkbeiner led Southern Nazarene to three-straight NAIA national titles and a combined 99-4 record from 1994 to 1996. Finkbeiner posted a 186-20 record in six seasons at SNU. During his career at Southern Nazarene, Finkbeiner coached nine NAIA All-Americans and a two-time NAIA Player of the Year, while five of his players went on to play professional basketball overseas.

During his tenure at Southern Nazarene, Finkbeiner's coaching achievements did not go unnoticed, as he was named the NAIA National Coach of the Year in 1994, 1995 and 1996. He was also named as the College Sports Magazine and Converse National Coach of the Year in 1995. Finkbeiner was named the NAIA District 9 Coach of the Year in 1993 and the Sooner Athletic Conference Coach of the Year from 1992 to 1996.

Finkbeiner, a native of Southern California, attended Southern Nazarene in Oklahoma City, Okla. from 1975-80, where he was a four-year letterwinner. In that time, he was selected as a Christian Collegiate All-American in 1978. Finkbeiner graduated with a bachelor's of science degree in physical education and completed his master's degree in physical education at Northwest Missouri State University. Along with coaching at SNU, Finkbeiner also worked as a professor in the kinesiology and sports management department.

Finkbeiner and his wife, Reva, have five children and two daughters-in-law, Isaac (Angela), Ben (Alycia), Corban (Nathan), Micha (Tommy) and Bethany. His son, Ben, is an assistant coach for the Aggies.

2016-17 AGGIE ROSTER

NUMERICAL ROSTER

<u>NO.</u>	<u>NAME</u>	<u>POS.</u>	<u>HT.</u>	<u>YR.</u>	<u>EXP.</u>	<u>HOMETOWN (HIGH SCHOOL/LAST SCHOOL)</u>
1	Eliza West	G	5-5	Fr.	HS	Mount Martha, Victoria, Australia (The Peninsula School)
2	Jessie Geer	G	5-8	Fr.	HS	Gillette, Wyo. (Campbell County HS)
3	Olivia West	G	5-6	Fr.	HS	Launceston, Tasmania, Australia (Templestowe College)
5	Shannon Dufficy	F	6-2	Fr.	HS	Preston, Victoria, Australia (Our Lady of Mercy College)
11	Lindsey Jensen	G	5-9	So.	1L	Smithfield, Utah (Sky View HS)
12	Hailey Bassett	G/F	6-2	Fr.	HS	Layton, Utah (Layton HS)
21	Victoria Price	G	5-8	So.	1L	Grand Prairie, Texas (South Grand Prairie HS)
22	Rachel Brewster	G	5-11	So.	1L	Melbourne, Victoria, Australia (Rowville Secondary College)
30	Dee Moore	F	6-4	Fr.	HS	Allen, Texas (Allen HS)
31	Katie Toole	G	5-10	So.	1L	Farmington, Utah (Viewmont HS)
32	Taylor Enders	G	5-10	So.	SQ	West Linn, Ore. (West Linn HS)
33	Lizzy Klinker	G	5-10	So.	1L	Fairfield, Mont. (Fairfield HS)
35	Angelica de Paulo	F	6-2	Sr.	1L	São Paulo, Brazil (Escola Estadual Doutour Jose Fornari/New Mexico JC)
41	Antoina Robinson	F	6-2	Sr.	1L	Dallas, Texas (Duncanville HS/New Mexico JC)
44	Deja Mason	C	6-4	So.	1L	San Antonio, Texas (Brennan HS)

Head Coach: Jerry Finkbeiner (Southern Nazarene, '80), Fifth year

Assistant Coaches: Ben Finkbeiner (Oral Roberts, '06), Third year

JC Carter (Southwest Baptist, '02), Third year

Kelsie Kruger (Adams State, '11), First year

Director of Operations: Brooke Jackson (Arizona, '11), First year

PRONUNCIATIONS

Shannon Dufficy = Duff-uh-sea

Finkbeiner = Fink-by-ner

Deja Mason = Day-juh

Antoina Robinson = Ant-wan-uh

HEIGHT BREAKDOWN

6-4 (2) – Deja Mason, Dee Moore

6-2 (4) – Hailey Bassett, Angelica de Paulo, Shannon Dufficy,

Antoina Robinson

5-11 (1) – Rachel Brewster

5-10 (3) – Taylor Enders, Lizzy Klinker, Katie Toole

5-9 (1) – Lindsey Jensen

5-8 (2) – Jessie Geer, Victoria Price

5-6 (1) – Olivia West

5-5 (1) – Eliza West

CLASS BREAKDOWN

Seniors (2) – Angelica de Paulo, Antoina Robinson

Juniors (0) – NA

Sophomores (7) – Rachel Brewster, Taylor Enders, Lindsey Jensen, Lizzy Klinker, Deja Mason, Victoria Price, Katie Toole

Freshmen (6) – Hailey Bassett, Shannon Dufficy, Jessie Geer, Dee Moore, Eliza West, Olivia West

POSITION BREAKDOWN

Centers (1) – Deja Mason

Forwards (4) – Shannon Dufficy, Dee Moore, Angelica de Paulo, Antoina Robinson

Guard/Forward (1) – Hailey Bassett

Guards (9) – Rachel Brewster, Taylor Enders, Jessie Geer, Lindsey Jensen, Lizzy Klinker, Victoria Price, Katie Toole, Eliza West, Olivia West

ALPHABETICAL ROSTER

<u>NO.</u>	<u>NAME</u>	<u>POS.</u>	<u>HT.</u>	<u>YR.</u>	<u>EXP.</u>	<u>HOMETOWN (HIGH SCHOOL/LAST SCHOOL)</u>
12	Hailey Bassett	G/F	6-2	Fr.	HS	Layton, Utah (Layton HS)
22	Rachel Brewster	G	5-11	So.	1L	Melbourne, Victoria, Australia (Rowville Secondary College)
35	Angelica de Paulo	F	6-2	Sr.	1L	São Paulo, Brazil (Escola Estadual Doutour Jose Fornari/New Mexico JC)
5	Shannon Dufficy	F	6-2	Fr.	HS	Preston, Victoria, Australia (Our Lady of Mercy College)
32	Taylor Enders	G	5-10	So.	SQ	West Linn, Ore. (West Linn HS)
2	Jessie Geer	G	5-8	Fr.	HS	Gillette, Wyo. (Campbell County HS)
11	Lindsey Jensen	G	5-9	So.	1L	Smithfield, Utah (Sky View HS)
33	Lizzy Klinker	G	5-10	So.	1L	Fairfield, Mont. (Fairfield HS)
44	Deja Mason	C	6-4	So.	1L	San Antonio, Texas (Brennan HS)
30	Dee Moore	F	6-4	Fr.	HS	Allen, Texas (Allen HS)
21	Victoria Price	G	5-8	So.	1L	Grand Prairie, Texas (South Grand Prairie HS)
41	Antoina Robinson	F	6-2	Sr.	1L	Dallas, Texas (Duncanville HS/New Mexico JC)
31	Katie Toole	G	5-10	So.	1L	Farmington, Utah (Viewmont HS)
1	Eliza West	G	5-5	Fr.	HS	Mount Martha, Victoria, Australia (The Peninsula School)
3	Olivia West	G	5-6	Fr.	HS	Launceston, Tasmania, Australia (Templestowe College)



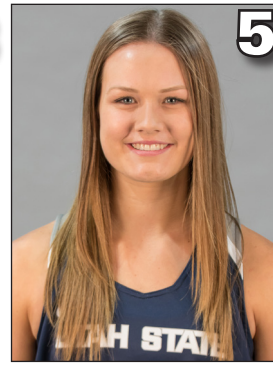
ELIZA WEST
Fr. • Guard • 5-5
Mount Martha, Victoria, Aust.



JESSIE GEER
Fr. • Guard • 5-8
Gillette, Wyo.



OLIVIA WEST
Fr. • Guard • 5-6
Launceston, Tasmania, Aust.



SHANNON DUFFICY
Fr. • Forward • 6-2
Preston, Victoria, Aust.



LINDSEY JENSEN
So. • Guard • 5-9
Smithfield, Utah



HAILEY BASSETT
Fr. • Guard/Forward • 6-2
Layton, Utah



VICTORIA PRICE
So. • Guard • 5-8
Grand Prairie, Texas



RACHEL BREWSTER
So. • Guard • 5-11
Melbourne, Victoria, Aust.



DEE MOORE
Fr. • Forward • 6-4
Allen, Texas



KATIE TOOLE
So. • Guard • 5-10
Farmington, Utah



TAYLOR ENDERS
So. • Guard • 5-10
West Linn, Ore.



LIZZY KLINKER
So. • Guard • 5-10
Fairfield, Mont.



ANGELICA DE PAULO
Sr. • Forward • 6-2
Sao Paulo, Brazil



ANTOINA ROBINSON
Sr. • Forward • 6-2
Dallas, Texas



DEJA MASON
So. • Center • 6-4
San Antonio, Texas



JERRY FINKBEINER
Head Coach
Fifth Season



BEN FINKBEINER
Assistant Coach
Third Year



JC CARTER
Assistant Coach
Third Year



KELSIE KRUGER
Assistant Coach
First Year



BROOKE JACKSON
Director of Operations
First Year

2016-17 Women's Basketball Roster