

SOFTBALL

McKay Perry, BYU Athletic Communications | O: (801) 422-9768 | C: (707) 533-7420 | softball_sid@byu.edu | twitter: @byusoftball

MWC Champions 2001	MWC Champions 2005	MWC Champions 2007	MWC Champions 2009	MWC Champions 2010	MWC Champions 2011	WAC Champions 2012	PCSC Champions 2013	WCC Champions 2014	NCAA Regionals 11 appearances 10 straight from '05-'14
---------------------------------	---------------------------------	---------------------------------	---------------------------------	---------------------------------	---------------------------------	---------------------------------	----------------------------------	---------------------------------	---

BYU 2015 SCHEDULE

Kajikawa Classic (Tempe, Ariz.)

2/5	Thu	Virginia	Win 5-4
2/5	Thu	San Jose State	Loss 9-8
2/6	Fri	New Mexico	Win 2-0
2/6	Fri	California	Loss 12-4 (5)
2/7	Sat	Cal Poly	Loss 3-1

Wilson/DeMarini Desert Classic (Las Vegas, Nevada)

2/12	Thu	Hawai'i	Win 5-4
2/13	Fri	Northwestern	Win 5-1
2/13	Fri	UNLV	Win 6-5
2/14	Sat	UTEP	Win 9-0 (5)
2/14	Sat	Cal State Fullerton	Loss 11-0 (5)

Mary Nutter Collegiate Classic (Cathedral City, Calif.)

2/19	Thu	UC Santa Barbara	Win 16-4
2/19	Thu	Maryland	Loss 2-1
2/20	Fri	Texas A&M	Loss 8-5
2/21	Sat	Indiana	Win 5-3
2/21	Sat	Oregon State	Win 14-5 (5)

Triple Crown College Tournament (Puerto Vallarta, Mexico)

2/26	Thu	Nevada	Win 7-5
2/27	Fri	Northern Colorado	Win 5-4
2/27	Fri	Southern Illinois	Win 8-0
2/28	Sat	Southern Illinois	Win 8-1

University of Tennessee Tournament (Knoxville, Tenn.)

3/5	Thu	North Dakota State	Canceled
3/6	Fri	Northern Iowa	Canceled
3/6	Fri	Indiana State	Canceled
3/7	Sat	Tennessee	Canceled
3/7	Sat	Purdue	Canceled

San Diego Classic II (San Diego, Calif.)

3/12	Thu	Long Beach State	2 p.m. PDT
3/12	Thu	San Diego State	4:30 p.m. PDT
3/13	Fri	Baylor	4:30 p.m. PDT
3/14	Sat	Western Carolina	9 a.m. PDT
3/14	Sat	UConn	11:30 a.m. PDT

3/20	Fri	Oklahoma State	4 p.m. MDT+
3/20	Fri	Oklahoma State	6 p.m. MDT+
3/21	Sat	Oklahoma State	1 p.m. MDT+
3/21	Sat	Utah Valley	3:30 p.m. MDT

3/24	Tue	@Weber State	3 p.m. MDT
3/31	Tue	@Utah State	4 p.m. MDT

4/3	Fri	@Saint Mary's	3 p.m. PDT
4/4	Sat	@Saint Mary's	12 p.m. PDT
4/4	Sat	@Saint Mary's	2 p.m. PDT

4/7	Tue	@Utah Valley	3 p.m. MDT
4/10	Fri	Pacific	5 p.m. MDT+
4/10	Fri	Pacific	7 p.m. MDT+
4/11	Sat	Pacific	1 p.m. MDT+

4/14	Tue	Weber State	6 p.m. MDT+
4/16	Thu	Southern Utah	4 p.m. MDT+
4/16	Thu	Southern Utah	6 p.m. MDT+

4/22	Wed	Utah State	6 p.m. MDT+
4/24	Fri	San Diego	5 p.m. MDT
4/24	Fri	San Diego	7 p.m. MDT
4/25	Sat	San Diego	1 p.m. MDT

5/1	Fri	@Santa Clara	4 p.m. PDT
5/1	Fri	@Santa Clara	6 p.m. PDT
5/2	Sat	@Santa Clara	12 p.m. PDT

5/5	Tue	Utah Valley	5 p.m. MDT+
5/8	Fri	@Loyola Marymount	12 p.m. PDT
5/8	Fri	@Loyola Marymount	2 p.m. PDT
5/9	Sat	@Loyola Marymount	2 p.m. PDT

5/14-5/16	NCAA Regionals	TBA
5/22-5/23	NCAA Super Regionals	TBA
5/27-6/2	Women's College World Series	TBA

+Available on BYUtv

SAN DIEGO CLASSIC II



BYU (13-6)
COUGARS

Head Coach Gordon Eakin
Div. I Career Record 496-229
Record at BYU Same
2014 Record 34-23, 12-2 WCC
Last time out 8-1 win over SIU

	LONG BEACH STATE 49ERS	Record: Last Meeting: 12-3 (6) loss, (3/2/13 @ SDSU)
	SAN DIEGO STATE AZTECS	Record: Last Meeting: 2-0 loss, (2/27/14 @ SDSU)
	BAYLOR BEARS	Record: Last Meeting: Never
	WESTERN CAROLINA CATAMOUNTS	Record: Last Meeting: Never
	UCONN HUSKIES	Record: Last Meeting: 9-1 win, (3/21/03 @ NMSU)

BYU STORYLINES

- **From the circle.** Sophomore ace McKenna Bull fueled the Cougars from the circle again last weekend, helping the team to a 13-6 overall record. She received her third-straight weekly conference honor, anchoring the BYU defense from the circle while upping her record to 13-3 on the season. The Ogden, Utah, native recorded a stifling 0.58 ERA while striking out 21 batters in 24.0 innings pitched. Bull allowed opponents a .182 batting average while giving up three hits or less in each of the final three games of the tournament. She threw three complete games in four starts.
- **Leadoff spot.** Junior Gordy Bravo continues her high-performance season while batting a team-high .492 and team-high OBP of .528. She currently has a 20-game reached base streak dating back to last season which is tied for the 10th-longest in BYU softball history.
- **.400.** In addition to Bravo, McKenzie St. Clair and Lacey Hofstedt are both hitting at least .400 with .419 and .400, respectively.
- **Runs.** Mercedes O'Connor has a team-leading 15 RBI on the year, but BYU has also seen run production out of Ashley Thompson (14 RBI), Bravo (13 RBI) and Sydney Broderick and Lauren Bell with 12 RBI apiece.
- **10-straight NCAA Regionals.** The postseason is the expectation with the Cougars having a total of 11 NCAA appearances and 10-straight from 2005-14. The team reached the NCAA Super Regional in 2010 for a program best.
- **4 in 4 in 4.** BYU softball has won four-consecutive conference championships from four different conferences (WCC '14, PCSC '13, WAC '12, MWC '11). This will be the first time since the 2011 season that the Cougars have played in the same conference two years in a row.

BYU NUMERICAL ROSTER

No.	Name	HT	POS	YR	B/T	Hometown (Previous School)
0	Mercedes O'Connor	5-7	C, OF	So.	R/R	Huntington Beach, CA/Edison HS
1	Lacey Hofstedt	5-6	OF	Sr.	L/R	Folsom, CA/Folsom HS
2	Gordy Bravo	5-2	OF	Jr.	L/R	Corona, CA/Eleanor Roosevelt HS
3	Ashley Thompson	6-2	INF, P	So.	R/R	Connell, WA/Connell HS
4	Sydney Broderick	5-4	C, OF	So.	L/L	Ashburn, VA/Stone Bridge HS
5	McKenna Bull	5-10	P	So.	R/R	Ogden, UT/Weber HS
6	Ashley Godfrey	5-6	INF, OF	Fr.	R/R	Buckeye, AZ/Estrella Foothills HS
7	Arianna Paulson	5-8	INF, P	Fr.	R/R	Payson, AZ/Payson HS
9	Lauren Bell	5-9	INF	So.	L/R	Murray, UT/Murray HS
10	Karli Lehr	5-5	INF	Fr.	L/R	Las Vegas, NV/Arbor View HS
12	Megan Arnold	5-8	C, 1B	Sr.	R/R	Yorba Linda, CA/Espananza HS
13	McKenzie St. Clair	5-5	OF, 2B	So.	R/R	Peoria, AZ/Sunrise Mountain HS
16	Alexa Strid	5-8	INF	Fr.	R/R	Stephens City, VA/Karl Maeser Academy
18	Caitlyn Larsen	5-10	INF	Fr.	R/R	Centerville, UT/Viewmont HS
22	Madison Merrell	5-8	INF, P	Fr.	R/R	Queen Creek, AZ/Queen Creek HS
25	Coco Tauali'i	5-4	INF, OF	Jr.	R/R	Torrance, CA/North HS
27	Brittany Call	5-2	OF	So.	R/R	Mission Viejo, CA/Mater Dei HS
32	Greta Bodine	5-7	OF	Fr.	R/R	Scarsdale, NY/Scarsdale HS

Head Coach: Gordon Eakin (13th year)
Assistant Coach: Pete Meredith (2nd year)
Assistant Coach: Kristin "House" Delahoussaye (2nd year)

PRONUNCIATION GUIDE

Karli Lehr	Leer	Arianna Paulson	AR-ee-awn-Nuh
Coco Tauali'i	Tau-wa-lee-ee	Greta Bodine	BO-deen

2015 QUICK FACTS

BRIGHAM YOUNG UNIVERSITY SCHOOL INFORMATION

Name of School: Brigham Young University
City/Zip: Provo, Utah 84602
Founded: 1875
Enrollment 29,672
Nickname: Cougars
School colors: Blue and White
Home Field/Capacity: Gail Miller Field/2,100
Surface: Grass
Affiliation: Division I
Conference: West Coast Conference
President: Kevin J Worthen, J.D.
Alma Mater, Year: BYU, 1982
Athletic Director: Tom Holmoe
Alma Mater, Year: BYU, 1983
Athletic Department Phone: (801) 422-2096
Ticket Office Phone: (801) 378-2465
Athletic Website: byucougars.com

BYU COACHING STAFF

Head Coach: Gordon Eakin
Record at School (years): 496-229 (13th year)
Career Div. I Record (years): Same
Assistant Coach/Pitching Coach: Pete Meredith (2nd year)
Assistant Coach: Kristin "House" Delahoussaye (2nd year)
Athletic Trainer: Chris Linde (16th year)

BYU HISTORY

First Year of Softball: 2000 (16th season)
Overall All-Time Record: 577-305 (.654)
Home Record: 181-45 (.801)
Winning Seasons: 14 (last 2014)
Conference Championships: 9 (last 2014)
Total NCAA Appearances (record): 11 (15-22)
Last NCAA Appearance: 2014
Result: Win vs. Northwestern, Loss vs. Washington,
Loss vs. Northwestern
In-State Opponent Record: 142-26 (.847)
Record vs. WCC Opponents: 52-11 (.825)

BYU TEAM INFORMATION

2014 Overall Record: 34-23
Conference Record/Finish: 12-2 / 1st
2014 Postseason: NCAA Washington Regional, 1-2 record
2014 Final National Ranking: 71
Starters Returning/Lost: 7/4
Lettermen Returning/Lost: 11/5
Newcomers: 6

SOFTBALL CONTACTS

McKay Perry
Softball Media Relations Director
Office: (801) 422-8999
Cell: (707) 533-7420
Email: softball_sid@byu.edu

Ralph Zobell
Assistant Softball Media Relations
Office: (801) 422-9769; Cell: (801) 367:3554
Email: ralph_zobell@byu.edu

Duff Tittle
Associate AD/Communications
Office: (801) 422-8948; Cell: (801) 372-4401
Email: duff_tittle@byu.edu

Athletic Communications Fax: (801) 422-0633
Mailing Address: 30 SFH, Provo, UT 84602-2239

BYU SOFTBALL BY THE NUMBERS

4 BYU softball has won four consecutive conference titles in four different leagues, taking the crown while as a member of the West Coast Conference, the Pacific Coast Softball Conference, the Western Athletic Conference and the Mountain West Conference. The Cougars have a running streak of finishing atop their conference in the past six seasons.

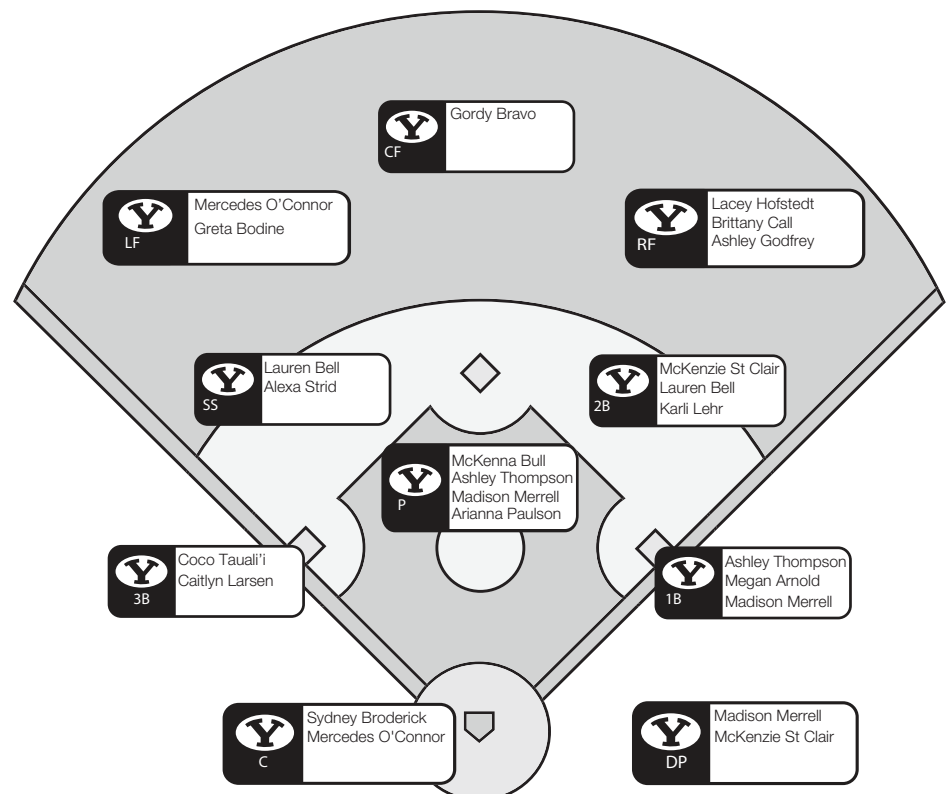
5 The Cougars are 12-2 on the season when scoring at least five runs. They are 7-3 in games decided by two runs or less.

10 With a string of 10-straight NCAA appearances, BYU has amounted 11 total in the program's 16-year history. In the 2014 Washington Regional, the Cougars finished 1-2 with a win over Northwestern and losses to Washington and Northwestern.

298 Sophomore pitcher McKenna Bull struck out 206 batters in 2014. She currently ranks No. 6 all-time at BYU with 298.

496 In his 13th season at the helm of BYU softball, coach Gordon Eakin is eight wins away from 500 with an all-time record of 496-229. At the conclusion of 2014, he was the No. 18 winningest active coach with a .684 winning percentage.

PROBABLE STARTERS



BYU SERIES RECORDS

LONG BEACH STATE

Overall series record: 2-3
 Home vs. LBSU: --
 Away at LBSU: --
 Neutral sites: 2-3
 Under Coach Eakin: 2-3
 Longest win streak: 2
 Longest losing streak: 2
 Largest margin of victory: 2 (3/11/11)
 Largest margin of defeat: 9 (3/2/13)
 Most runs scored: 2 (twice)
 Most runs given up: 12 (3/2/13)

SAN DIEGO STATE

Overall series record: 26-23
 Home vs. SDSU: 9-11
 Away at SDSU: 15-11
 Neutral sites: 2-1
 Under Coach Eakin: 23-14
 Longest win streak: 6
 Longest losing streak: 5
 Largest margin of victory: 6 (4/22/05)
 Largest margin of defeat: 10 (3/31/06)
 Most runs scored: 9 (4/22/05)
 Most runs given up: 11 (twice)

BAYLOR

Overall series record: --
 Home vs. BU: --
 Away at BU: --
 Neutral sites: --
 Under Coach Eakin: --
 Longest win streak: --
 Longest losing streak: --
 Largest margin of victory: --
 Largest margin of defeat: --
 Most runs scored: --
 Most runs given up: --

WESTERN CAROLINA UNIVERSITY

Overall series record: --
 Home vs. WCU: --
 Away at WCU: --
 Neutral sites: --
 Under Coach Eakin: --
 Longest win streak: --
 Longest losing streak: --
 Largest margin of victory: --
 Largest margin of defeat: --
 Most runs scored: --
 Most runs given up: --

UCONN

Overall series record: 1-0
 Home vs. UConn: --
 Away at UConn: --
 Neutral sites: 1-0
 Under Coach Eakin: 1-0
 Longest win streak: 1
 Longest losing streak: 1
 Largest margin of victory: 8 (3/21/03)
 Largest margin of defeat: --
 Most runs scored: 9 (3/21/03)
 Most runs given up: 1 (3/21/03)

LONG BEACH STATE (THURS. 2 P.M. PDT | LIVE STATS)

The 49ers take a 10-16 record into the tournament in San Diego, including a 4-11 record at neutral sites. Most recently Long Beach State went 0-5 at the Judy Garman Classic in Fullerton, California, but the team is capable of pulling off big wins with a resume that includes victories over UCLA and Utah.

Leading LBSU from the plate are Shayna Kimbrough (.364 BA, 4 SB), Julia Lombardi (.321 BA, 2 HR, 13 RBI), Lauren Lombardi (.321 BA, 4 HR, 25 RBI) and Darian Tautalafua (.301 BA, 4 HR, 13 RBI). Pitching duties have been split three ways among Christina Clermont (4-5, 3.11 ERA, 69.2 IP), Christian Carbajal (3-3, 3.57 ERA, 31.1 IP) and Amanda Hansen (3-7, 6.58 ERA, 44.2 IP). BYU is 2-3 all-time against Long Beach State with the last meeting a 12-3 loss in six innings in 2013.

SAN DIEGO STATE (THURS. 4:30 P.M. PDT | LIVE STATS)

The Aztecs are 15-8 with a 7-1 record at home and 7-6 on neutral fields. Most recently San Diego State went 4-1 in the Judy Garman Classic with wins over Pacific, Iowa, Long Beach State and Cal State Fullerton. Its lone loss on the weekend was to No. 3/2 Michigan.

Jordan Kayla (.408 BA, 1 HR, 10 RBI), Lorena Bauer (.356 BA, 4 HR, 23 RBI) and Jenavee Peres (.339 BA, 2 HR, 16 RBI) power SDSU at the plate while pitcher Erica Romero has thrown 110.1 innings with a 13-5 record and a 3.11 ERA.

BAYLOR (FRI. 4:30 P.M. PDT | AUDIO STREAM)

The Bears are 14-5 and coming off a 2014 season in which they advanced to the Women's College World Series. Baylor has wins over Oregon and Arizona with recent losses to Pacific, Michigan and Arizona State. The Cougars face the Bears for the first time in the school's softball history.

From the batter's box, Lindsey Cargill (.500 BA, 1 HR, 7 RBI), Sarah Smith (.387 BA, 3 HR, 12 RBI), Shelby Friundenberg (.366 BA, 5 HR, 15 RBI) and Linsey Hays (.264 BA, 6 HR, 22 RBI) lead Baylor's offensive effort. Pitcher Heather Stearns (5-4, 2.51 ERA, 53 IP) has seen the most action from the circle with Sarah Toben (4-0, 1.05 ERA, 20 IP), Kendall Potts (2-1, 1.81 ERA, 27 IP) and Brooke Seneshen (3-0, 2.52 ERA, 25 IP) all splitting the pitching duties as well.

WESTERN CAROLINA UNIVERSITY (SAT. 9 A.M. PDT)

BYU faces the Catamounts for the first time ever this weekend in San Diego. WCU is 7-10 on the season with a 3-2 mark at the Winthrop Tournament last weekend.

Courtney Price is hitting .298 from the plate with two home runs and 10 RBI. Pitcher Jordan Garrett is 5-4 with a 2.18 ERA in 61 innings.

UCONN (SAT. 11:30 A.M. PDT)

The Huskies are 6-9 with a 2-3 mark at the Mizuno Classic last weekend in Stillwater, Oklahoma. UConn picked up wins against Oklahoma State and Evansville. The Cougars are 1-0 against the Huskies with the lone win back in 2003. Emily O'Donnell (.370 BA, 2 HR, 9 RBI) and Taylor Townsend (.317 BA, 1 HR, 7 RBI) have paced UConn at the plate. From the circle, Lauren Duggan (4-4, 4.66 ERA) and Kayla Doty (2-3, 6.89 ERA) have split the majority of time.

PITCHING

No.	Name	Innings	Strikeouts	No-Hitters
5	McKenna Bull	8.2, Maryland/same	14, MD/14, twice	--/--
7	Arianna Paulson	5.1, SJST/same	5, N. Colo./same	--
22	Madison Merrell	3.2, CSF/same	1, twice/same	--
33	Ashley Thompson	2.2, UCSB/7.0, Fordham '14	1, twice/7, twice	--/--

HITTING

No.	Name	Runs	Hits	RBI
0	Mercedes O'Connor	3, Oregon St./2, three times	4, SIU/same	4, UNR/5, LMU '14
1	Lacey Hofstedt	2, twice/2, four times	2, mult. times/3, twice	2, Oregon St. /4, Oregon '14
2	Gordy Bravo	2, twice/2, multiple times	3, four times/4, Idaho State '13	4, Indiana/same
3	Ashley Thompson	2, SJST/3, Seattle '14	3, Oregon St./3, four times	5, Oregon St./same
4	Sydney Broderick	2, twice/3, LMU '14	2, three times/3, six times	4, SJST/same
6	Ashley Godfrey	2, Texas A&M/same	2, Texas A&M/same	--
9	Lauren Bell	4, UCSB/same	2, three times/3, three times	5, SIU/same
10	Karli Lehr	--	--	--
12	Megan Arnold	-- /2, SUU '13	2, Texas A&M /3, SUU '14	2, Texas A&M/4, UMKC '12
13	McKenzie St. Clair	2, three times/3, East Carolina '14	3, SIU/3, four times	2, UNR/4, Idaho State '14
16	Alexa Strid	2, twice/same	2, twice/same	2, twice/same
18	Caitlyn Larsen	1, SIU/same	1, UCSB/same	1, UCSB/same
22	Madison Merrell	2, SIU/same	1, twice/same	1, SJST/same
25	Coco Tauai'i	2, twice/2, multiple times	2, three times/4, SUU '13	4, UCSB/4, twice
27	Brittany Call	1, SIU/same	1, CSF/same	1, Texas A&M/same
32	Greta Bodine	--	--	--

BYU HITTING STREAKS

PLAYER	SEASON	CURRENT	CAREER
Mercedes O'Connor	6	-	9
Lacey Hofstedt	8	1	8
Gordy Bravo	13	3	13
Ashley Godfrey	1	1	1
Lauren Bell	3	3	9
Karli Lehr	-	-	-
Megan Arnold	2	-	3
McKenzie St. Clair	5	1	6
Alexa Strid	2	1	2
Caitlyn Larsen	1	-	1
Madison Merrell	1	1	1
Coco Tauali'i	6	1	8
Brittany Call	1	-	1
Greta Bodine	-	-	-
Ashley Thompson	3	2	8
Sydney Broderick	6	6	16

BYU ON-BASE STREAKS

PLAYER	SEASON	CURRENT	CAREER
Mercedes O'Connor	11	-	11
Lacey Hofstedt	8	1	8
Gordy Bravo	19	19	20
Ashley Godfrey	1	1	1
Lauren Bell	3	3	15
Karli Lehr	-	-	-
Megan Arnold	2	-	5
McKenzie St. Clair	12	1	17
Alexa Strid	4	1	4
Caitlyn Larsen	1	1	1
Madison Merrell	1	1	1
Coco Tauali'i	6	1	23
Brittany Call	1	-	1
Greta Bodine	-	-	-
Ashley Thompson	9	2	15
Sydney Broderick	8	6	25

HOW MANY GAMES WITH... 2015 CAREER

PERFECT HITTING % (MIN. 3 AB)

Coco Tauali'i	-	1
McKenzie St. Clair	-	1
Sydney Broderick	-	3
Mercedes O'Connor	-	1
Gordy Bravo	1	1
Ashley Thompson	1	1

3+ HITS

Mercedes O'Connor	1	3
Coco Tauali'i	-	2
Lauren Bell	-	3
McKenzie St. Clair	1	4
Ashley Thompson	1	4
Sydney Broderick	-	6
Gordy Bravo	5	10
Lacey Hofstedt	-	5

3+ RBI

Mercedes O'Connor	1	2
Megan Arnold	-	4
Sydney Broderick	1	5
McKenzie St. Clair	-	3
Ashley Thompson	-	4
Lacey Hofstedt	-	1
Gordy Bravo	1	5
Coco Tauali'i	1	5
Lauren Bell	3	3

3+ RUNS

McKenzie St. Clair	-	1
Lauren Bell	1	1
Ashley Thompson	-	1
Lacey Hofstedt	-	1
Gordy Bravo	-	1

2+ STOLEN BASES

Lacey Hofstedt	2	16
Ashley Thompson	1	1

10+ STRIKEOUTS

McKenna Bull	1	3
--------------	---	---

LAST TIME BYU...

Recorded 10-14 hits in a game	13 vs. SIU (2/28/15)
Recorded 15-19 hits in a game	16 vs. Seattle (2/13/14)
Recorded 20+ hits in a game	20 vs. Southern Utah (5/04/10)
Scored 10-14 runs	14 vs. Oregon State (2/21/15)
Scored 15+ runs	16 vs. UCSB (2/19/15)
Scored 10+ runs in an inning	11 vs. Saint Mary's (5/03/13)
Drew eight or more walks	8 vs. UNR (2/26/15)
Stole five or more bases	5 vs. SIU (2/27/15)
Hit five or more homeruns	5 vs. Southern Utah (4/07/10)
Hit 10+ home runs in a game	10 at Utah Valley (4/16/08)
Had 3+ players with 3+ hits	Hofstedt, Broderick, St. Clair vs. Idaho St. (3/29/14)
Struck out 15+ batters	15 at Fresno State (3/05/09)
Defeated a team ranked 11-25	6-4 vs. No. 11 Hawai'i (5/11/12)
Defeated a team ranked 6-10	7-2 vs. No. 9 Cal Berkley (3/19/11)
Defeated a top 5 team	6-5 vs. No. 2/3 Oregon (3/25/14)
Lost to a top 5 team	3-2 vs. No. 2 Oregon (3/12/14)
Lost a non-conference game at home	6-4 vs. Idaho St. (3/28/14)
Lost a conference game at home	2-1 vs. Santa Clara (4/12/14)
Won a run-rule game	14-5 (5) vs. Oregon State (2/21/15)
Lost a run-rule game	11-0 (5) vs. Cal St. Fullerton (2/14/15)
Won an extra inning game	5-4 (8) vs. Utah State (4/02/14)
Lost an extra inning game	1-2 (9) vs. Maryland (2/19/15)
Played an error free game	vs. SIU (2/27/15)
Didn't have a strikeout at the plate	vs. UVU (5/06/14)
Multiple double plays	2 vs. San Jose State (2/05/15)
Triple play	vs. UVa (2/21/14)
Had back-to-back home runs	Coco Tauali'i and Carly Duckworth vs. Seattle (2/13/14)
Had back-to-back-to-back home runs	Fitu, Atagi, Hudson-Shamo vs. UNLV (5/05/11)
Had 3+ players with 3+ RBIs	Willard, Toney, Arnold vs. Utah State (4/13/12)

LAST TIME A BYU PLAYER...

Recorded five or more hits	5, Jess Fitu vs. Cal State Northridge (2/19/11)
Recorded 3 or more hits	3, McKenzie St. Clair & Gordy Bravo vs. SIU (2/28/15)
Hit 1.000 (min. 3 AB)	(3-for-3) Ashley Thompson & Gordy Bravo vs. Oregon State (2/21/15)
Scored four or more runs	4, Lauren Bell vs. UCSB (2/19/15)
Batted in five or more runs	5, Lauren Bell vs. SIU (2/28/15)
Had a multi-home run game	2, Mercedes O'Connor vs. Northern Colo. (2/27/15)
Hit for the cycle	Never Happened
Hit a grand slam	Coco Tauali'i vs. UCSB (2/19/15)
Drew 4+ walks in a game	4, Jessica Dugas at Utah Valley (5/02/12)
Stole 3+ bases in a game	3, Lacey Hofstedt vs. UNR (2/26/15)
Had a walk-off home run	Stacie Toney vs. Utah State (4/14/12)
Had a walk-off hit	Mercedes O'Connor vs. Hawai'i (2/12/15)

LAST TIME A BYU PITCHER...

Struck out 10+ batters	14, McKenna Bull vs. Maryland (2/19/15)
No walks (min. 4 IP)	Bull vs. Oregon State (2/21/15)
Threw a no-hitter	Tori Almond, McKenna Bull and Ashley Thompson at UVU (4/04/14)
Threw a perfect game	Hannah Howell vs. LMU (4/13/13)



2015 WCC STANDINGS (AS OF 3/9)

	WCC	Overall	Streak
BYU	0-0	13-6	W6
Saint Mary's	0-0	7-15	L1
Pacific	0-0	7-16	L1
San Diego	0-0	12-12	W1
Loyola Marymount	0-0	9-14	L1
Santa Clara	0-0	5-17	L4

2015 WCC PLAYERS OF THE WEEK

Week 1	Gianetta France, Santa Clara
Week 2	Nicole Zapotoczny, Pacific
Week 3	Gordy Bravo, BYU
Week 4	Mercedes O'Connor, BYU
Week 5	Alicia Brown, LMU
Week 6	
Week 7	
Week 8	
Week 9	
Week 10	
Week 11	
Week 12	
Week 13	

2015 WCC PITCHERS OF THE WEEK

Week 1	Paige von Sprecken, San Diego
Week 2	McKenna Bull, BYU
Week 3	McKenna Bull, BYU
Week 4	McKenna Bull, BYU
Week 5	Dani Bonnet, Pacific
Week 6	
Week 7	
Week 8	
Week 9	
Week 10	
Week 11	
Week 12	
Week 13	

WCC PLAYERS OF THE WEEK

PROVO, Utah – Sophomores McKenna Bull and Mercedes O'Connor received Pitcher and Player of the Week, the West Coast Conference announced Monday.

The sophomores powered the Cougars to four victories in the first games played outside the U.S. in NCAA softball history.

Bull received her third-straight weekly conference honor, anchoring the BYU defense from the circle while upping her record to 13-3 on the season. The Ogden, Utah, native recorded a stifling 0.58 ERA while striking out 21 batters in 24.0 innings pitched. Bull allowed opponents a .182 batting average while giving up three hits or less in each of the final three games of the tournament. She threw three complete games in four starts.

O'Connor, the outfielder out of Huntington Beach, California, averaged .400 from the plate, hitting 6-for-15 with a double, two home runs, eight RBI and a stolen base. She registered an .867 slugging percentage and batted 3-for-5 with runners in scoring position. O'Connor notched her first multi-home run game of her career, hitting two homers that drove in the final four runs in the 5-4 comeback win over Northern Colorado.

The Cougars continue tournament play this week as they face North Dakota State, Northern Iowa, Indiana State, Tennessee and Purdue in the University of Tennessee Tournament Thursday through Saturday.

PRESEASON POLL

SAN BRUNO, Calif. - Brigham Young University has been tabbed by the league coaches to win the West Coast Conference Softball Championship this spring, it was announced by the league office Wednesday.

BYU earned top billing collecting five of the six first-place votes and totaled 25 points in the poll. The defending WCC Champion is coming off a 39-23, 12-2 WCC record, after capturing its 10th consecutive postseason bid that ended at the NCAA Regional Semifinal. Thirteen-year head coach Gordon Eakin returns 12 players from that squad, including All-American outfielder Gordy Bravo, All-Conference first team selection Tori Almond, and All-Conference second team honoree Ashlee Robinson. Four sophomores are also returning to the Cougars that include catcher/outfielder Sydney Broderick, infielder Lauren Bell, outfielder/second baseman McKenzie St. Clair, and pitcher McKenna Bull all of which were named to this year's preseason All-Conference team.

HEAD COACH GORDON EAKIN

Eakin is entering his 13th season as the Cougars' head coach and his 16th season at BYU overall.

Eakin was named head coach in July 2002 after working as an assistant coach since the softball program's inception in 2000. Since that time he has led the Cougars to five Mountain West Conference championships, one Western Athletic Conference tournament championship, one West Coast Conference championship and 10 NCAA tournament appearances.

The 2014 WCC Coach of the Year has coached 12 All-Americans, eight conference players of the year, four conference freshmen of the year and two MWC Pitchers of the Year during his tenure.

In 2010, Eakin guided the Cougars to 46 wins, the most in school history, as BYU advanced to the NCAA Super Regionals for the first time ever with wins over

East Carolina and host Texas before ending its season at national runner-up Arizona. The Cougars finished second in the country in batting average, seventh in scoring and ninth in slugging percentage as a team.

Known as one of the best hitting coaches in the country, Eakin has helped BYU finish in the top-ten nationally six times in slugging percentage, six times in home runs per game, four times in batting average and four times in scoring.

In addition to his duties at BYU, Eakin was also an assistant coach and hitting coach for the USA National Team in 2009. In the summer of 2010, Eakin helped guide the National Team to a 17-2 record as USA won the World Championship in Venezuela, the World Cup in Oklahoma and the Japan Cup championship in Sendai, Japan.

Before entering the coaching ranks, Eakin was a successful baseball and softball player. After playing collegiate baseball at the University of Utah, Eakin signed with the Oakland Athletics organization where he played for three years.

Eakin went on to join the United States All-Star team, playing in three U.S. Olympic sports festivals in 1986, 1993 and 1994, winning bronze, silver and gold, respectively. While on the team, Eakin was honored on the ISC All-World First Team and was an ASA All-American. He would later go on to play shortstop on the internationally ranked Larry H. Miller Toyota Fast Pitch team, eventually earning induction into the Utah Fast Pitch Hall of Fame in 1998.

Eakin is a native of Holladay, Utah, and graduated from Granite High. He currently resides in Sandy, Utah, and is married to Barbi. They are the parents of three children (Alicia, Ryan & Parker) and have five grandsons.



EAKIN AT A GLANCE

- Record of 496-229 (.684) in his 13th year as head coach
- Former USA National Team hitting coach
- Guided BYU to five Mountain West Conference championships (2005, 2007, 2009, 2010, 2011) while never finishing lower than third in the conference
- Led BYU to the WAC tournament championship in 2012, the 2013 PCSC championship and the 2014 WCC championship
- Five-time coach of the year (MWC: 2009, 2010, 2011, PCSC 2013 & WCC 2014)
- Led BYU to first-ever NCAA Super Regional appearance in 2010 and 10-straight NCAA tournament appearances overall
- Coached 12 All-Americans
- Coached 8 conference players of the year, 4 conference freshmen of the year and 2 MWC Pitchers of the Year
- Coached 23 All-Region performers, 40 all-conference performers
- Guided BYU to top-10 national finishes in slugging percentage six times, home runs per game six times, batting average four times and scoring four times
- Coached two players who would go on to play professionally, including MWC Player of the Year Angeline Quiocho who finished first in the nation in home runs per game and RBI per game in 2010

EAKIN COACHING RECORD

YEAR	Overall Record	CONF.	CONF. FINISH	NCAA
2003	36-17	10-7	3rd/MWC	-
2004	34-18	11-8	3rd/MWC	-
2005	45-14	16-2	1st/MWC	1-2
2006	43-22	15-5	2nd/MWC	1-2
2007	43-20	16-4	1st/MWC	2-2
2008	44-20	14-6	2nd/MWC	1-2
2009	40-18	12-2	1st/MWC	2-2
2010	46-13	12-3	1st/MWC	3-2
2011	40-18	11-2	1st/MWC	2-2
2012	45-15	15-4	1st/WAC	2-2
2013	33-25	19-5	1st/PCSC	0-2
2014	34-23	12-2	1st/WCC	1-2
2015	13-6	--	--	--
TOTAL	496-229 (.684)	163-50	-	15-20
(12 Seasons)				

Assistant Coaches

Pete Meredith

2014-Present

Coaching Experience

The Pitching Academy

Playing Career

- Played professional men's fastpitch for Sportsman Enterprises, Dave Frye Plastering, Farm Tavern, Trans Aire International and Larry Miller Toyota
- Meredith pitched in a record 23 consecutive International Softball Congress World Tournaments
- Set records for most tournament wins (61), no hitters (8), strikeouts in a tournament (100) and strikeouts in a game (21)
- Named to the All-World Team seven times
- Inducted into the International Softball Congress Hall of Fame in 2007
- Holds the record for most wins in ASA national championship play, compiling a 55-27 record before retiring from Major competition in 2002.
- Shares the record for most wins in one Men's Major National Championship with eight in 1988 for Trans-Aire of Elkhart, Ind. and is the record holder for most innings pitched in one national tourney (88) in that same national championship.

Hometown

Dunedin, New Zealand



Kristin Delahoussaye

2014-Present

Coaching Experience

- Assistant Softball and Strength Coordinator
- Dixie State (2013)
- Fifth-Year coach
- BYU (2012)

Playing Career

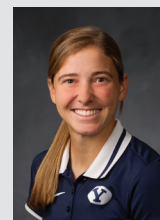
- Four-year starter at second base for BYU (2008-2011)
- Played and started in every game of her career except for one weekend
- Named first-team all-conference and all-region three times
- For her career: second in doubles (45), walks (144), at bats (706) and runs (198) sixth in hits (233) and triples (6) seventh in total bases (347) eighth in stolen bases (31) and slugging percentage(.591) 10th in batting average at BYU

Education

Brigham Young University (2012)

Hometown

Las Vegas



#0 MERCEDES O'CONNOR • 5-7 • SO. • C/OF • HUNTINGTON BEACH, CALIF. • EDISON HS



CAREER STATS																			
Year	GP	GS	AB	R	H	2B	3B	HR	RBI	BB	SO	SB	CS	SF	SH	HBP	AVG	SLG	OBP
2014	41	30	89	18	29	7	1	2	20	12	8	3	1	0	2	2	.326	.494	.417
2015	19	19	48	18	14	2	0	2	15	9	3	2	0	1	5	5	.292	.458	.444
TOTAL	60	49	137	36	43	9	1	4	35	21	11	5	1	1	7	7	.314	.482	.428

- WCC Player of the Week (3/2)
- Hit 4-for-5 in 8-0 win over SIU
- Blasted two home runs for four RBI in 5-4 comeback win over Nevada
- Hit a walk-off single in the 5-4 win over Hawaii
- Currently has a 10-game on-base streak
- Named to the College Sports Madness 2015 West Coast Preseason All-Conference Second Team
- The first two hits of her career were RBI singles.
- Named WCC Player of the Week for Week 12
- Went 3-for-3 with two RBI and a double in the final game of the 2014 season against Northwestern
- As a freshman, finished fourth on the team with a .326 batting average, earning All-WCC First Team

#1 LACEY HOFSTEDT • 5-6 • SR. • OF • FOLSOM, CALIF. • FOLSOM HS



CAREER STATS																			
Year	GP	GS	AB	R	H	2B	3B	HR	RBI	BB	SO	SB	CS	SF	SH	HBP	AVG	SLG	OBP
2011	39	5	18	16	4	0	0	0	2	0	8	14	1	0	0	0	.222	.222	.222
2012	12	6	15	4	4	0	0	0	0	0	5	4	2	0	1	1	.267	.267	.313
2013	49	29	92	25	27	0	0	0	5	1	22	25	1	0	8	0	.293	.293	.301
2014	46	24	74	23	19	0	0	1	4	4	15	11	3	0	6	2	.257	.297	.313
2015	19	19	55	14	22	0	0	0	7	1	6	11	1	0	1	1	.400	.400	.421
TOTAL	165	83	254	82	76	0	0	1	18	6	56	65	8	0	16	4	.299	.311	.326

- Went 2-for-2 with three stolen bases in win over Nevada
- Collected two hits each game for four games in a row in the Mary Nutter Classic
- Hit 1-for-3 with an RBI in the 5-1 win over Northwestern
- Began the season with an eight-game hitting streak
- All-Academic WCC selection in 2014
- Is the all-time stolen base leader at BYU
- Hit an inside-the-park grand slam against No. 2/3 Oregon. It was the first extra base hit of her career and a new career high for RBIs in a game (4).
- Led the team and conference in 2014 with 11 stolen bases

#2 GORDY BRAVO • 5-2 • JR. • OF • CORONA, CALIF. • ELEANOR ROOSEVELT HS



CAREER STATS																			
Year	GP	GS	AB	R	H	2B	3B	HR	RBI	BB	SO	SB	CS	SF	SH	HBP	AVG	SLG	OBP
2013	56	56	180	35	70	10	2	2	43	14	18	9	2	3	12	3	.389	.500	.435
2014	45	43	123	19	38	5	0	1	12	17	12	3	2	3	5	1	.309	.374	.389
2015	19	19	63	14	31	3	1	0	13	6	3	6	1	2	2	1	.492	.571	.528
TOTAL	120	118	366	68	139	18	3	3	68	37	33	18	5	8	19	5	.380	.470	.435

- Hit 8-for-14 in the Puerto Vallarta College Challenge
- Named WCC Player of the Week (2/23)
- Tallied three hits in three different games while going 11-for-19 in the Mary Nutter Classic
- Went 1-for-2 with a double and an RBI in victory over UTEP
- Hit 2-for-4 with two RBI in 6-5 win over UNLV
- Reached base in the first 10 games this season
- Named to the College Sports Madness 2015 West Coast Preseason All-Conference Second Team
- Played with the Mexico National Team over the summer in 2014

#3 ASHLEY THOMPSON • 6-2 • SO. • INF/P • CONNELL, WASH. • CONNELL HS



CAREER STATS																			
Year	GP	GS	AB	R	H	2B	3B	HR	RBI	BB	SO	SB	CS	SF	SH	HBP	AVG	SLG	OBP
2014	49	49	127	26	33	5	0	5	31	37	25	3	1	0	2	1	.260	.417	.430
2015	19	19	49	8	13	1	0	2	14	17	7	5	0	1	0	0	.265	.408	.448
TOTAL	68	68	176	34	46	6	0	7	45	54	32	8	1	1	2	1	.261	.415	.448

CAREER PITCHING STATS																				
Year	GP	GS	W	L	CG	SHO	SV	IP	H	R	ER	BB	SO	2B	3B	HR	AB	HBP	AVG	ERA
2014	51	51	3	4	1	0	0	53	71	59	49	52	42	8	1	6	228	5	.311	6.47
2015	19	19	0	1	0	0	0	4.2	12	10	10	2	2	1	0	3	23	2	.522	15.00
TOTAL	70	70	3	5	1	0	0	57.2	83	69	59	54	44	9	1	9	251	7	.331	7.16

- Hit seventh home run of her career against SIU
- Drove in a career-high five RBI in the win over Oregon State while also hitting 3-for-3 with her first homer of the season. Went 1-for-4 with three walks, two runs scored and one stolen base in first two games of the season
- Named to the College Sports Madness 2015 West Coast Preseason All-Conference Second Team
- In 2014, was No. 30 in the NCAA in walks per game (0.73)
- Fifth in the WCC in on-base percentage (.430) and fourth in RBI (31)
- Hit her first home run to give the Cougars a lead against Oklahoma State in the Mary Nutter Classic.
- Combined with Tori Almond and McKenna Bull for a no-hitter at UVU in 2014

#4 SYDNEY BRODERICK • 5-4 • SO. • C/OF • ASHBURN, VA. • STONE BRIDGE HS



CAREER STATS

Year	GP	GS	AB	R	H	2B	3B	HR	RBI	BB	SO	SB	CS	SF	SH	HBP	AVG	SLG	OBP
2014	57	57	175	37	63	11	2	6	31	23	10	6	0	3	0	6	.360	.549	.444
2015	19	19	55	12	17	4	1	2	12	11	2	0	0	0	1	1	.309	.527	.433
TOTAL	76	76	230	49	80	15	3	8	43	34	12	6	0	3	1	7	.348	.543	.442

- Went 2-for-3 with two home runs and four RBI against San Jose State
- Hit 1-for-3 with two RBI and a triple in win over Northwestern
- Named to the 2015 All-WCC Preseason Softball Team
- Named to the College Sports Madness 2015 West Coast Preseason All-Conference First Team
- Was the No. 79 toughest to strikeout in NCAA in 2014
- As a freshman, top 10 in the WCC in every offensive category including: batting average (3rd), slugging percentage (5th), on-base percentage (4th), runs scored (3rd), hits (1st), RBI (3rd), triples (2nd) and home runs (4th)
- Was a double away from hitting for the cycle against Idaho State going 3-for-3 with 3 RBIs to help lead BYU back from a 10-0 deficit.
- Had a 16-game hitting streak and a 25-game reached base streak going into the last week of the 2014 season, both team highs
- NFCA All-Pacific Region Third Team, All-WCC First Team and Co-WCC Freshman of the Year in 2014

#5 MCKENNA BULL • 5-10 • SO. • P • OGDEN, UTAH • WEBER HS



CAREER STATS

Year	GP	GS	W	L	CG	SHO	SV	IP	H	R	ER	BB	SO	2B	3B	HR	AB	HBP	AVG	ERA
2014	48	32	16	9	10	3	7	173.1	160	99	78	88	206	25	2	14	669	7	.239	3.15
2015	17	14	13	3	10	2	0	92.1	80	40	25	61	92	10	0	4	348	5	.230	1.90
TOTAL	65	46	29	12	20	5	7	265.2	240	139	103	149	298	35	2	18	1017	12	.236	2.71

- Tied a career-high 14 strikeouts in an extra-inning game against Maryland
- Allowed only two hits against Northwestern while pitching a complete game as the Cougars won 5-1
- Threw a shutout against New Mexico, striking out nine
- Struck out nine in the season-opening win over Virginia
- WCC Pitcher of the Week (2/16, 2/23, 3/2)
- Named to the 2015 All-WCC Preseason Softball Team
- Named to the College Sports Madness 2015 West Coast Preseason All-Conference First Team
- Tied a single-game BYU record with 14 strikeouts against Valparaiso in 2014
- Pitched a combined no hitter with teammates Tori Almond and Ashley Thompson against UVU in 2014
- In 2014 Ranked 46th in NCAA in strikeouts (206) and 25th in strikeouts per seven innings (8.3)
- Became the fourth BYU pitcher to strikeout over 200 batters in a single season finishing sixth at BYU with 206 and also breaking BYU's previous freshman record of 134 strikeouts.
- Had a WHIP of 1.47 in 2014

#6 ASHLEY GODFREY • 5-6 • FR. • INF/OF • BUCKEYE, ARIZ. • ESTRELLA HILLS HS



CAREER STATS

Year	GP	GS	AB	R	H	2B	3B	HR	RBI	BB	SO	SB	CS	SF	SH	HBP	AVG	SLG	OBP
2015	7	0	6	3	3	0	0	0	0	0	1	0	0	0	0	0	.500	.500	.500

- Hit 2-for-3 against Texas A&M including two runs scored
- Collected first hit in game against Cal State Fullerton

#7 ARIANNA PAULSON • 5-8 • FR. • INF/P • PAYSON, ARIZ. • PAYSON HS



CAREER PITCHING STATS

Year	GP	GS	W	L	CG	SHO	SV	IP	H	R	ER	BB	SO	2B	3B	HR	AB	HBP	AVG	ERA
2015	9	3	0	2	0	0	0	21.2	27	24	19	28	20	7	0	0	89	3	.303	6.14

#9 LAUREN BELL • 5-9 • SO. • SS • MURRAY, UTAH • MURRAY HS

CAREER STATS																			
Year	GP	GS	AB	R	H	2B	3B	HR	RBI	BB	SO	SB	CS	SF	SH	HBP	AVG	SLG	OBP
2014	53	52	161	33	53	4	0	1	8	12	29	5	1	0	4	2	.329	.373	.383
2015	18	18	52	12	11	2	1	1	12	7	11	1	0	2	3	0	.212	.346	.295
TOTAL	71	70	213	45	64	6	1	2	20	19	40	6	1	2	7	2	.300	.366	.360

- Hit first-career grand slam against SIU and drove in five RBI
- Against UCSB hit 1-for-2 with three RBI
- Went 2-for-2 with four RBI and a double in the 9-0 win over UTEP
- Named to the 2015 All-WCC Preseason Softball Team
- Named to the College Sports Madness 2015 West Coast Preseason All-Conference First Team
- As a freshman, hit .395 in conference play to lead the WCC.
- Had two hitting streaks of nine games during the season while her 53 hits was third best in the WCC in 2014
- Had a hit in every game of the 2014 Mary Nutter Classic and ended with a .556 batting average and three doubles.
- All-WCC First Team 2014

#10 KARLI LEHR • 5-5 • FR. • INF • LAS VEGAS • ARBOR VIEW HS

CAREER STATS																			
Year	GP	GS	AB	R	H	2B	3B	HR	RBI	BB	SO	SB	CS	SF	SH	HBP	AVG	SLG	OBP
2015	1	0	1	0	0	0	0	0	0	0	0	0	0	0	0	0	.000	.000	.000

#12 MEGAN ARNOLD • 5-8 • SR. • C/1B • YORBA LINDA, CALIF. • ESPERANZA HS

CAREER STATS																			
Year	GP	GS	AB	R	H	2B	3B	HR	RBI	BB	SO	SB	CS	SF	SH	HBP	AVG	SLG	OBP
2012	30	8	46	3	9	2	0	2	10	4	15	0	0	0	0	0	.196	.370	.260
2013	33	14	57	6	13	2	0	2	8	6	13	0	0	1	5	0	.228	.368	.297
2014	25	15	53	5	15	0	0	3	9	3	15	0	1	1	0	0	.283	.453	.316
2015	9	4	16	0	3	0	0	0	3	1	9	0	0	0	0	1	.188	.188	.278
TOTAL	97	41	172	14	40	4	0	7	30	14	52	0	1	2	5	1	.233	.378	.291

- Hit 2-for-3 with two RBI against Texas A&M
- As a freshman, she hit a grand slam vs. UMKC for her first-ever hit at Gail Miller Field, becoming the fifth BYU freshman to hit a grand slam and the first since 2003
- One of two seniors on this year's team

#13 MCKENZIE ST. CLAIR • 5-5 • SO. • OF • PEORIA, ARIZ. • SUNRISE MOUNTAIN HS

CAREER STATS																			
Year	GP	GS	AB	R	H	2B	3B	HR	RBI	BB	SO	SB	CS	SF	SH	HBP	AVG	SLG	OBP
2014	56	54	157	36	55	10	2	5	34	29	20	6	1	1	2	1	.350	.535	.452
2015	18	17	43	11	18	0	1	0	8	8	7	1	1	3	2	2	.419	.465	.500
TOTAL	74	71	200	47	73	10	3	5	42	37	27	7	2	4	4	3	.365	.520	.463

- Went 3-for-4 against SIU
- Hit 2-for-3 including a triple in the 5-4 win over Hawaii
- Named to the 2015 All-WCC Preseason Softball Team
- Named to the College Sports Madness 2015 West Coast Preseason All-Conference First Team
- Second on the team and fifth in the WCC with a .350 batting average in 2014
- In 2014 led the team and was third in the conference with .452 on-base percentage
- As a freshman, second on the team and in the WCC in runs (37), hits (55) and RBI (34)
- Named as the first-ever WCC Softball Player of the Week (
- All-WCC First Team and NFCA All-America Scholar Athlete in 2014

#16 ALEXA STRID • 5-8 • FR. • INF • STEPHENS CITY, VA. • KARL MAESER ACADEMY

CAREER STATS																			
Year	GP	GS	AB	R	H	2B	3B	HR	RBI	BB	SO	SB	CS	SF	SH	HBP	AVG	SLG	OBP
2015	16	14	36	8	9	2	0	0	5	2	9	1	0	0	2	2	.250	.306	.325

- Hit 1-for-2 against Northwestern with a double and a run scored
- Drove in two RBI in the 9-0 win over UTEP while going 2-for-3 at the plate

#18 CAITLYN LARSEN • 5-10 • FR. • INF • CENTERVILLE, UTAH • VIEWMONT HS



CAREER STATS																			
Year	GP	GS	AB	R	H	2B	3B	HR	RBI	BB	SO	SB	CS	SF	SH	HBP	AVG	SLG	OBP
2015	8	2	12	1	1	0	0	0	1	1	6	0	0	0	1	0	.083	.083	.154

- Recorded her first hit and RBI against UCSB

#22 MADISON MERRELL • 5-8 • FR. • INF/P • QUEEN CREEK, ARIZ. • QUEEN CREEK HS



CAREER STATS																			
Year	GP	GS	AB	R	H	2B	3B	HR	RBI	BB	SO	SB	CS	SF	SH	HBP	AVG	SLG	OBP
2015	5	4	12	3	2	1	1	0	1	2	4	1	0	0	0	1	.167	.417	.333

CAREER PITCHING STATS																				
Year	GP	GS	W	L	CG	SHO	SV	IP	H	R	ER	BB	SO	2B	3B	HR	AB	HBP	AVG	ERA
2015	6	4	0	0	0	0	0	5	10	7	7	5	2	1	1	2	23	0	.435	9.80

- Registered her first hit against San Jose State, an RBI-triple

#25 COCO TAUALI'I • 5-4 • JR. • INF/OF • TORRANCE, CALIF. • NORTH HS



CAREER STATS																			
Year	GP	GS	AB	R	H	2B	3B	HR	RBI	BB	SO	SB	CS	SF	SH	HBP	AVG	SLG	OBP
2013	48	47	122	21	38	3	0	3	29	20	24	1	1	2	2	6	.311	.410	.427
2014	40	33	100	19	21	3	0	4	12	17	37	1	0	0	3	4	.210	.360	.347
2015	18	18	45	9	14	5	0	1	7	4	12	1	0	1	3	1	.311	.489	.373
TOTAL	106	98	267	49	73	11	0	8	48	41	73	3	1	3	8	11	.273	.404	.388

- Against UCSB collected four RBI on first-career grand slam
- Hit 2-for-2 with two runs scored in the 9-0 win vs. UTEP
- Went 2-for-4 with two doubles and an RBI in the 6-5 win against UNLV
- In 2014, started BYU's second-ever triple play against No. 25 Notre Dame.
- All-WCC Academic Team selection 2014

#27 BRITTANY CALL • 5-2 • SO. • OF • MISSION VIEJO, CALIF. • MATER DEI HS



CAREER STATS																			
Year	GP	GS	AB	R	H	2B	3B	HR	RBI	BB	SO	SB	CS	SF	SH	HBP	AVG	SLG	OBP
2014	8	0	2	0	0	0	0	0	0	1	0	0	0	0	0	0	.000	.000	.333
2015	7	0	7	1	1	0	0	0	1	0	1	0	0	0	0	0	.143	.143	.143
TOTAL	15	0	9	1	1	0	0	0	1	1	1	0	0	0	0	0	.111	.111	.200

- First hit of the season came against Cal State Fullerton, an infield single to the shortstop
- Had sacrifice fly for an RBI against Texas A&M

#32 GRETA BODINE • 5-7 • FR. • SS • MURRAY, UTAH • MURRAY HS



CAREER STATS																			
Year	GP	GS	AB	R	H	2B	3B	HR	RBI	BB	SO	SB	CS	SF	SH	HBP	AVG	SLG	OBP
2015	3	0	1	0	0	0	0	0	0	0	0	0	0	0	0	0	.000	.000	.000

The Automated ScoreBook
Overall Statistics for BYU (as of Feb 28, 2015)
(All games Sorted by Batting avg)

Record: 13-6 Home: 0-0 Away: 1-0 Neutral: 12-6 WCC: 0-0

Player	avg	at-bats	r	h	2b	3b	hr	rbi	ops	obp	slp	bb	so	cs	stl	sb-att	po	a	e	fld%			
2 BRAVO, Gordy	.492	19-19	63	14	31	3	1	0	13	36	.571	6	1	8	0	.528	2	2	6-7	30	0	0	1.000
13 ST. CLAIR, McKenzie	.419	18-17	43	11	18	0	1	0	8	20	.465	8	2	7	0	.500	3	2	1-2	14	7	2	.913
1 HOFSTEDT, Lacey	.400	19-19	55	14	22	0	0	0	7	22	.400	1	1	6	0	.421	0	1	11-12	11	1	0	1.000
25 TAUALI'I, Coco	.311	18-18	45	9	14	5	0	1	7	22	.489	4	1	12	0	.373	1	3	1-1	9	21	8	.789
4 BRÖDERICK, Spence	.309	19-19	55	12	17	4	1	2	12	29	.527	11	1	2	0	.438	0	1	0-0	127	10	6	.958
0 O'CONNOR, Mercedes	.292	19-19	48	18	14	2	0	2	15	22	.458	9	5	3	1	.444	1	5	2-2	16	1	0	1.000
3 THOMPSON, Ashley	.265	19-19	49	8	13	1	0	2	14	20	.408	17	0	7	1	.448	1	0	5-5	88	4	2	.979
16 STRID, Alexa	.250	16-14	36	8	9	2	0	0	5	11	.306	2	2	9	0	.325	0	2	1-1	19	25	5	.898
9 BELL, Lauren	.212	18-18	52	12	11	2	1	1	12	18	.346	7	0	11	0	.296	2	8	1-1	34	32	3	.957
12 ARNOLD, Megan	.188	9-4	16	0	3	0	0	0	3	3	.188	1	1	9	0	.278	0	0	0-0	11	0	1	.917
22 MERRELL, Madison	.167	5-4	12	3	2	1	1	0	1	5	.417	2	1	4	0	.338	0	0	1-1	2	3	0	1.000

5 GODFREY, Ashley	.500	7-0	6	3	3	0	0	0	0	3	.500	0	0	1	0	.500	0	0	0-0	1	0	0	1.000
27 CALL, Brittany	.143	7-0	7	1	1	0	0	0	1	1	.143	0	0	1	0	.143	0	0	0-0	1	0	0	1.000
18 LARSEN, Colbyn	.083	6-2	12	1	1	0	0	0	1	1	.083	1	0	6	0	.154	0	1	0-0	4	4	0	1.000
32 BODINE, Greta	.000	3-0	1	0	0	0	0	0	0	0	.000	0	0	0	0	.000	0	0	0-0	0	0	0	.000
10 LEHR, Karli	.000	1-0	1	0	0	0	0	0	0	0	.000	0	0	0	0	.000	0	0	0-0	0	1	0	1.000
7 PAULSON, Arianna	.000	2-0	0	0	0	0	0	0	0	0	.000	0	0	0	0	.000	0	0	0-0	1	5	0	1.000
Totals	.317	19	501	114	159	20	5	8	99	213	.425	69	15	81	2	.408	10	20	29-32	371	122	29	.944
Opponents	.267	19	483	81	129	19	1	9	74	177	.366	96	10	116	2	.398	2	13	13-17	361	163	33	.941

LOB - Team (143), Opp (154). DPs turned - Team (7), Opp (6). CI - Team (0), Opp (1).

(All games Sorted by Earned run avg)

Player	era	w-l	inn	so	cs	sho	sv	ip	h	r	er	bb	so	2b	3b	hr	b/era	wp	hb	bk	sh	etc
5 BULL, McKenna	1.90	13-8	17	14	10	2/1	0	92.1	80	40	26	61	92	10	0	4	.230	2	6	0	1	9
7 PAULSON, Arianna	6.14	0-2	8	3	0	0/0	0	21.2	27	24	19	28	20	7	0	0	.303	4	3	0	1	3

22 MERRELL, Madison	9.80	0-0	2	0	0	0/0	0	5.0	10	7	7	5	2	1	1	2	.435	0	0	0	0	0
3 THOMPSON, Ashley	15.00	0-1	3	2	0	0/1	0	4.2	12	10	10	2	2	1	0	3	.522	1	2	0	0	1
Totals	3.45	13-6	19	19	10	3/1	0	123.2	129	81	61	96	116	19	1	9	.267	7	10	0	2	13
Opponents	5.18	6-13	19	19	4	1/0	1	120.1	159	114	89	69	81	20	5	8	.317	10	15	13	10	20

PB - Team (3), BRÖDERICK 3, Opp (1). Pickoffs - Team (4), BRÖDERICK 4, Opp (1).

The Automated ScoreBook
Overall Statistics for BYU (as of Feb 28, 2015)
(All games Sorted by Fielding pct)

Player	c	DP	▲	●	TPA%	▲	DP	▲	TPA%	DP	▲
2 BRAVO, Gordy	30	30	0	0	1.000	0	0	0	.000	0	0
0 O'CONNOR, Mercedes	17	16	1	0	1.000	0	0	0	.000	0	0
1 HOFSTEET, Lacey	12	11	1	0	1.000	1	0	0	.000	0	0
18 LARSEN, Caitlyn	8	4	4	0	1.000	0	0	0	.000	0	0
7 PULLSON, Ariana	6	1	5	0	1.000	0	7	1	.875	0	0
22 MERRELL, Madison	5	2	3	0	1.000	0	0	0	.000	0	0
6 GEDFREY, Ashley	1	1	0	0	1.000	0	0	0	.000	0	0
27 CALL, Brittany	1	1	0	0	1.000	0	0	0	.000	0	0
10 LEHR, Karl	1	0	1	0	1.000	1	0	0	.000	0	0
3 THOMPSON, Ashley	94	88	4	2	.979	6	0	0	.000	0	0
4 BRIDGEMAN, Sydney	143	127	10	6	.958	1	13	4	.769	3	0
9 BELL, Lauren	69	34	32	3	.957	5	0	0	.000	0	0
12 ARNOLD, Meagan	12	11	0	1	.917	1	0	0	.000	0	0
13 ST. CLAIR, McKenzie	23	14	7	2	.913	0	0	0	.000	0	0
16 STRID, Alexo	49	19	25	5	.898	1	0	0	.000	0	0
5 BULL, McKenna	13	3	8	2	.846	0	6	3	.667	0	0
25 TAUALTI, Coco	38	9	21	8	.789	0	0	0	.000	0	0
32 BODINE, Greta	0	0	0	0	.000	0	0	0	.000	0	0
Totals	522	371	122	29	.944	7	13	4	.765	3	0
Opponents	557	361	163	33	.941	6	29	3	.906	1	1

Hitting minimums - 1 Games 0.8 TPA/Game
Pitching minimums - 1 Games 0.5 IP/Game

The Automated ScoreBook
Game Results for BYU (as of Feb 28, 2015)
(All games)

Date	Opponent	Score	Inns	Overall	WCC	Pitcher of record	At home	Time
Feb 05, 2015	vs Virginia	w 5-4	7	1-0-0	0-0-0	BULL (W 1-0)	115	2:33
Feb 05, 2016	vs San Jose State	L 8-9	7	1-1-0	0-0-0	PAULSON (L 0-1)	0	2:20
@ Feb 06, 2015	vs New Mexico	w 2-0	7	2-1-0	0-0-0	BULL (W 1-0)	150	1:51
I Feb 06, 2016	vs California	L 4-12	6	2-2-0	0-0-0	THOMPSON (L 0-1)	166	2:15
Feb 07, 2015	vs Cal Poly	L 1-3	7	2-3-0	0-0-0	BULL (L 2-1)	0	2:15
Feb 12, 2016	vs Hawaii	w 5-4	7	3-3-0	0-0-0	BULL (W 3-1)	246	2:30
Feb 13, 2015	vs Northwestern	w 5-1	7	4-3-0	0-0-0	BULL (W 4-1)	0	1:50
Feb 13, 2014	at UNLV	w 6-6	7	5-3-0	0-0-0	BULL (W 5-1)	416	2:50
Feb 14, 2015	vs UTEP	w 9-0	5	6-3-0	0-0-0	BULL (W 6-1)	0	1:25
Feb 14, 2016	vs #25 Cal St. Fullerton	L 0-11	6	6-4-0	0-0-0	PAULSON (L 0-2)	125	1:40
Feb 19, 2015	vs UC Santa Barbara	w 16-4	7	7-4-0	0-0-0	BULL (W)	146	2:36
Feb 19, 2016	vs Maryland	L 1-2	(9)	7-6-0	0-0-0	BULL (L 7-2)	102	2:32
Feb 20, 2015	vs Texas A&M	L 5-8	7	7-6-0	0-0-0	BULL (L 7-3)	0	2:40
Feb 21, 2016	vs Indiana	w 5-8	7	8-6-0	0-0-0	BULL (W 8-3)	103	2:04
Feb 21, 2015	vs Oregon State	w 14-5	5	9-6-0	0-0-0	BULL (W 9-3)	230	1:45
Feb 26, 2016	vs Nevada	w 7-6	7	10-6-0	0-0-0	BULL (W 10-3)	166	2:24
Feb 27, 2015	vs Northern Colorado	w 5-4	7	11-6-0	0-0-0	BULL (W 11-3)	102	2:23
Feb 27, 2016	vs Southern Illinois	w 8-0	7	12-6-0	0-0-0	BULL (W 12-3)	117	2:20
Feb 28, 2015	vs Southern Illinois	w 8-1	7	13-6-0	0-0-0	BULL (W 13-3)	163	1:51

() extra inning game