

BYU SOFTBALL

McKay Perry, BYU Athletic Communications | O: (801) 422-9768 | C: (707) 533-7420 | softball_sid@byu.edu | twitter: @byusoftball

| | | | | | | | | | |
|---------------------------------|---------------------------------|---------------------------------|---------------------------------|---------------------------------|---------------------------------|---------------------------------|----------------------------------|---------------------------------|---|
| MWC Champions 2001 | MWC Champions 2005 | MWC Champions 2007 | MWC Champions 2009 | MWC Champions 2010 | MWC Champions 2011 | WAC Champions 2012 | PCSC Champions 2013 | WCC Champions 2014 | NCAA Regionals 11 appearances 10 straight from '05-'14 |
|---------------------------------|---------------------------------|---------------------------------|---------------------------------|---------------------------------|---------------------------------|---------------------------------|----------------------------------|---------------------------------|---|

BYU 2015 SCHEDULE

| | | | |
|---|------------------------------|---------------------|---------------|
| Kajikawa Classic (Tempe, Ariz.) | | | |
| 2/5 | Thu | Virginia | Win 5-4 |
| 2/5 | Thu | San Jose State | Loss 9-8 |
| 2/6 | Fri | New Mexico | Win 2-0 |
| 2/6 | Fri | California | Loss 12-4 (5) |
| 2/7 | Sat | Cal Poly | Loss 3-1 |
| Wilson/DeMarini Desert Classic (Las Vegas, Nevada) | | | |
| 2/12 | Thu | Hawai'i | Win 5-4 |
| 2/13 | Fri | Northwestern | Win 5-1 |
| 2/13 | Fri | UNLV | Win 6-5 |
| 2/14 | Sat | UTEP | Win 9-0 (5) |
| 2/14 | Sat | Cal State Fullerton | Loss 11-0 (5) |
| Mary Nutter Collegiate Classic (Cathedral City, Calif.) | | | |
| 2/19 | Thu | UC Santa Barbara | Win 16-4 |
| 2/19 | Thu | Maryland | Loss 2-1 |
| 2/20 | Fri | Texas A&M | Loss 8-5 |
| 2/21 | Sat | Indiana | Win 5-3 |
| 2/21 | Sat | Oregon State | Win 14-5 (5) |
| Triple Crown College Tournament (Puerto Vallarta, Mexico) | | | |
| 2/26 | Thu | Nevada | Win 7-5 |
| 2/27 | Fri | Northern Colorado | Win 5-4 |
| 2/27 | Fri | Southern Illinois | Win 8-0 |
| 2/28 | Sat | Southern Illinois | Win 8-1 |
| University of Tennessee Tournament (Knoxville, Tenn.) | | | |
| 3/5 | Thu | North Dakota State | Canceled |
| 3/6 | Fri | Northern Iowa | Canceled |
| 3/6 | Fri | Indiana State | Canceled |
| 3/7 | Sat | Tennessee | Canceled |
| 3/7 | Sat | Purdue | Canceled |
| San Diego Classic II (San Diego, Calif.) | | | |
| 3/12 | Thu | Long Beach State | Win 2-1 |
| 3/12 | Thu | San Diego State | Win 3-1 |
| 3/13 | Fri | #15 Baylor | Loss 1-4 |
| 3/14 | Sat | Western Carolina | Win 3-1 |
| 3/14 | Sat | UCConn | Win 4-1 |
| 3/20 | Fri | Oklahoma State | Win 2-1 |
| 3/20 | Fri | Oklahoma State | Win 10-2 (5) |
| 3/21 | Sat | Oklahoma State | Win 10-2 (6) |
| 3/21 | Sat | Utah Valley | Loss 13-0 (5) |
| 3/24 | Tue | @Weber State | Win 8-0 (5) |
| 3/31 | Tue | @Utah State | Win 13-2 (5) |
| 4/3 | Fri | @Saint Mary's | 3 p.m. PDT |
| 4/4 | Sat | @Saint Mary's | 12 p.m. PDT |
| 4/4 | Sat | @Saint Mary's | 2 p.m. PDT |
| 4/7 | Tue | @Utah Valley | 3 p.m. MDT |
| 4/10 | Fri | Pacific | 5 p.m. MDT+ |
| 4/10 | Fri | Pacific | 7 p.m. MDT+ |
| 4/11 | Sat | Pacific | 1 p.m. MDT+ |
| 4/14 | Tue | Weber State | 6 p.m. MDT+ |
| 4/16 | Thu | Southern Utah | 4 p.m. MDT+ |
| 4/16 | Thu | Southern Utah | 6 p.m. MDT+ |
| 4/22 | Wed | Utah State | 6 p.m. MDT+ |
| 4/24 | Fri | San Diego | 5 p.m. MDT |
| 4/24 | Fri | San Diego | 7 p.m. MDT |
| 4/25 | Sat | San Diego | 1 p.m. MDT |
| 5/1 | Fri | @Santa Clara | 4 p.m. PDT |
| 5/1 | Fri | @Santa Clara | 6 p.m. PDT |
| 5/2 | Sat | @Santa Clara | 12 p.m. PDT |
| 5/5 | Tue | Utah Valley | 5 p.m. MDT+ |
| 5/8 | Fri | @Loyola Marymount | 12 p.m. PDT |
| 5/8 | Fri | @Loyola Marymount | 2 p.m. PDT |
| 5/9 | Sat | @Loyola Marymount | 2 p.m. PDT |
| 5/14-5/16 | NCAA Regionals | | TBA |
| 5/22-5/23 | NCAA Super Regionals | | TBA |
| 5/27-6/2 | Women's College World Series | | TBA |

+Available on BYUtv

AWAY



BYU (22-8)
COUGARS

Head Coach: Gordon Eakin
Div. I Career Record 505-231
Record at BYU Same
2014 Record 34-23, 12-2 WCC
Last time out W 13-2 (5) at USU

GAME INFO
Live Stats smcgaels.com/livestats

SERIES HISTORY
Record 11-0
Home vs. SMC 7-0
Away at SMC 0-0
Neutral sites 4-0
Under Coach Eakin 9-0
Last win 3-0, 5/10/14
Last loss Never

HOME



Saint Mary's (15-21)
GAELS

Head Coach: . . Jessica Hanseth-Rodgers
Div. I Career Record 213-322
Record at SMC Same
2014 Record 16-17
Last time out W 3-0 vs. UMKC

BYU STORYLINES

- **From the circle.** Pitcher McKenna Bull is No. 5 in the NCAA in wins with a 20-5 record while ranking No. 26 in strikeouts with 142. Her 1.94 ERA has helped pace the BYU defense as she helped hold opponents to one run in four of her last five starts.
- **Hitting .400.** Gordy Bravo and Lacey Hofstedt have continued their hot hitting, batting .448 and .424, respectively.
- **At the plate.** Other standouts from the plate include Sydney Broderick with her .373 batting average and McKenzie St. Clair's .342 and Lauren Bell's .313.
- **Runs.** Sydney Broderick has a team-leading 24 RBI on the year, but BYU has also seen run production out of Ashley Thompson (20 RBI), Bravo (17 RBI) and Mercedes O'Connor and Lauren Bell with 21 and 16 RBI, respectively.
- **WCC.** The Cougars are 52-11 against West Coast Conference opponents with an 11-0 mark against Saint Mary's.
- **10-straight NCAA Regionals.** The postseason is the expectation with the Cougars having a total of 11 NCAA appearances and 10-straight from 2005-14. The team reached the NCAA Super Regional in 2010 for a program best.
- **4 in 4 in 4.** BYU softball has won four-consecutive conference championships from four different conferences (WCC '14, PCSC '13, WAC '12, MWC '11). This will be the first time since the 2011 season that the Cougars have played in the same conference two years in a row.

BYU NUMERICAL ROSTER

| No. | Name | HT | POS | YR | B/T | Hometown (Previous School) |
|-----|--------------------|------|---------|-----|-----|---------------------------------------|
| 0 | Mercedes O'Connor | 5-7 | C, OF | So. | R/R | Huntington Beach, CA/Edison HS |
| 1 | Lacey Hofstedt | 5-6 | OF | Sr. | L/R | Folsom, CA/Folsom HS |
| 2 | Gordy Bravo | 5-2 | OF | Jr. | L/R | Corona, CA/Eleanor Roosevelt HS |
| 3 | Ashley Thompson | 6-2 | INF, P | So. | R/R | Connell, WA/Connell HS |
| 4 | Sydney Broderick | 5-4 | C, OF | So. | L/L | Ashburn, VA/Stone Bridge HS |
| 5 | McKenna Bull | 5-10 | P | So. | R/R | Ogden, UT/Weber HS |
| 6 | Ashley Godfrey | 5-6 | INF, OF | Fr. | R/R | Buckeye, AZ/Estrella Foothills HS |
| 7 | Arianna Paulson | 5-8 | INF, P | Fr. | R/R | Payson, AZ/Payson HS |
| 9 | Lauren Bell | 5-9 | INF | So. | L/R | Murray, UT/Murray HS |
| 10 | Karli Lehr | 5-5 | INF | Fr. | L/R | Las Vegas, NV/Arbor View HS |
| 12 | Megan Arnold | 5-8 | C, 1B | Sr. | R/R | Yorba Linda, CA/Esperanza HS |
| 13 | McKenzie St. Clair | 5-5 | OF, 2B | So. | R/R | Peoria, AZ/Sunrise Mountain HS |
| 16 | Alexa Strid | 5-8 | INF | Fr. | R/R | Stephens City, VA/Karl Maeser Academy |
| 18 | Caitlyn Larsen | 5-10 | INF | Fr. | R/R | Centerville, UT/Viewmont HS |
| 22 | Madison Merrell | 5-8 | INF, P | Fr. | R/R | Queen Creek, AZ/Queen Creek HS |
| 25 | Coco Tauali'i | 5-4 | INF, OF | Jr. | R/R | Torrance, CA/North HS |
| 27 | Brittany Bell | 5-2 | OF | So. | R/R | Mission Viejo, CA/Mater Dei HS |
| 32 | Greta Bodine | 5-7 | OF | Fr. | R/R | Scarsdale, NY/Scarsdale HS |

Head Coach: Gordon Eakin (13th year)
Assistant Coach: Pete Meredith (2nd year)
Assistant Coach: Kristin "House" Delahoussaye (2nd year)

PRONUNCIATION GUIDE

| | | | |
|---------------|---------------|-----------------|---------------|
| Karli Lehr | Leer | Arianna Paulson | AR-ee-awn-Nuh |
| Coco Tauali'i | Tau-wa-lee-ee | Greta Bodine | BO-deen |

2015 QUICK FACTS

BRIGHAM YOUNG UNIVERSITY SCHOOL INFORMATION

Name of School: Brigham Young University
 City/Zip: Provo, Utah 84602
 Founded: 1875
 Enrollment 29,672
 Nickname: Cougars
 School colors: Blue and White
 Home Field/Capacity: Gail Miller Field/2,100
 Surface: Grass
 Affiliation: Division I
 Conference: West Coast Conference
 President: Kevin J Worthen, J.D.
 Alma Mater, Year: BYU, 1982
 Athletic Director: Tom Holmoe
 Alma Mater, Year: BYU, 1983
 Athletic Department Phone: (801) 422-2096
 Ticket Office Phone: (801) 378-2465
 Athletic Website: byucougars.com

BYU COACHING STAFF

Head Coach: Gordon Eakin
 Record at School (years): 504-231 (13th year)
 Career Div. I Record (years): Same
 Assistant Coach/Pitching Coach: Pete Meredith (2nd year)
 Assistant Coach: Kristin "House" Delahoussaye (2nd year)
 Athletic Trainer: Chris Linde (16th year)

BYU HISTORY

First Year of Softball: 2000 (16th season)
 Overall All-Time Record: 586-307 (.656)
 Home Record: 185-46 (.801)
 Winning Seasons: 14 (last 2014)
 Conference Championships: 9 (last 2014)
 Total NCAA Appearances (record): 11 (15-22)
 Last NCAA Appearance: 2014
 Result: Win vs. Northwestern, Loss vs. Washington, Loss vs. Northwestern
 In-State Opponent Record: 144-27 (.842)
 Record vs. WCC Opponents: 52-11 (.825)

BYU TEAM INFORMATION

2014 Overall Record: 34-23
 Conference Record/Finish: 12-2 / 1st
 2014 Postseason: NCAA Washington Regional, 1-2 record
 2014 Final National Ranking: 71
 Starters Returning/Lost: 7/4
 Lettermen Returning/Lost: 11/5
 Newcomers: 6

SOFTBALL CONTACTS

McKay Perry
 Softball Media Relations Director
 Office: (801) 422-8999
 Cell: (707) 533-7420
 Email: softball_sid@byu.edu

Ralph Zobel
 Assistant Softball Media Relations
 Office: (801) 422-9769; Cell: (801) 367:3554
 Email: ralph_zobel@byu.edu

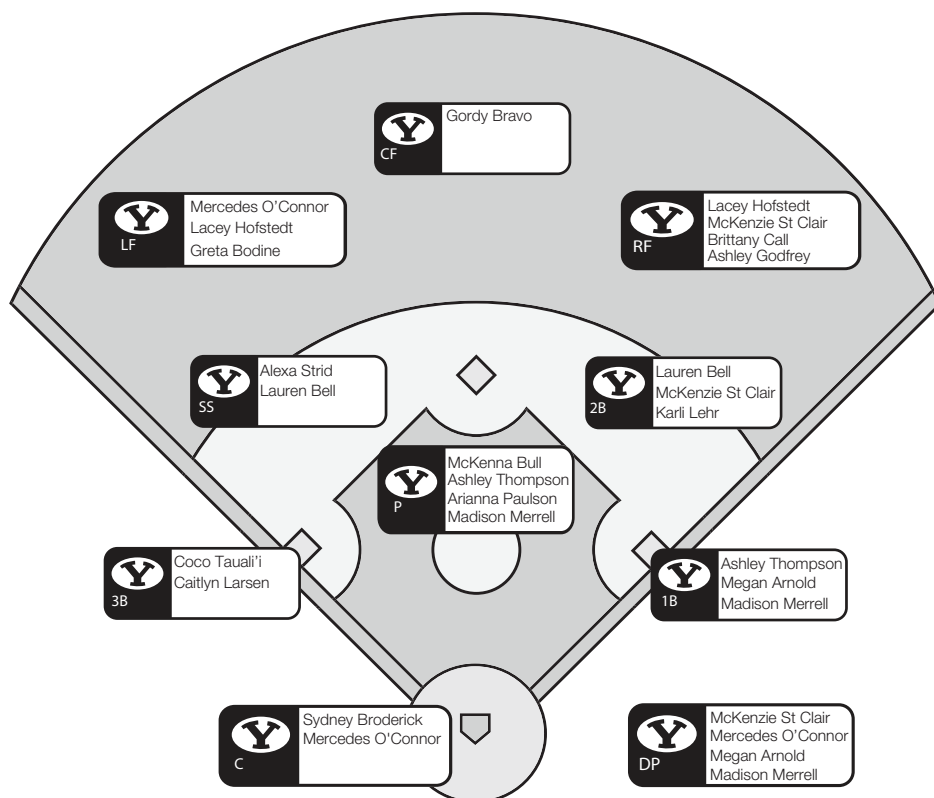
Duff Tittle
 Associate AD/Communications
 Office: (801) 422-8948; Cell: (801) 372-4401
 Email: duff_tittle@byu.edu

Athletic Communications Fax: (801) 422-0633
 Mailing Address: 30 SFH, Provo, UT 84602-2239

BYU SOFTBALL BY THE NUMBERS

- 4** Sophomore pitcher McKenna Bull is tied for fourth in NCAA softball in victories as of March 30. She picked up her 20th win of the season on March 31.
- 5** The Cougars are 13-2 on the season when scoring at least five runs. They are 10-3 in games decided by two runs or less.
- 10** With a string of 10-straight NCAA appearances, BYU has amounted 11 total in the program's 16-year history. In the 2014 Washington Regional, the Cougars finished 1-2 with a win over Northwestern and losses to Washington and Northwestern.
- 26** Bull is tied for No. 26 in the country in strikeouts this season with 140. She has 142.
- 500** In the final game of the San Diego Classic II last weekend, BYU softball clinched the 500th win of head coach Gordon Eakin's career. In his 13th season at the helm of the Cougars, he has an all-time record of 505-231. At the conclusion of 2014, he was the No. 18 winningest active coach with a .684 winning percentage.

PROBABLE STARTERS



BYU SERIES RECORDS**SAINT MARY'S**

Overall series record: 11-0
 Home vs. SMC: 7-0
 Away at SMC: 0-0
 Neutral sites: 4-0
 Under Coach Eakin: 9-0
 Longest win streak: 11
 Last win: 3-0, 5/10/14
 Longest losing streak: --
 Last loss: --
 Largest margin of victory: 12(14-2)
 5/9/14
 Largest margin of defeat: --
 Most runs scored: 14, twice
 Most runs given up: 6, twice

BYU SOFTBALL FACES UTAH STATE, OPENS WCC PLAY AT SAINT MARY'S

PROVO, Utah – After playing only one game last week, BYU softball hits the road for one at Utah State Tuesday and three at Saint Mary's to open up West Coast Conference play this weekend.

The Cougars (21-8) will face the Aggies (11-21) Tuesday at 4 p.m. MDT broadcast live on BYU Radio. The three-game series with the Gaels (15-21) at Moraga, California, begins Friday at 3 p.m. PDT followed by a Saturday doubleheader at noon and 2 p.m.

Last week BYU took an 8-0 decision in five innings at Ogden, Utah, against Weber State. Sophomore McKenna Bull picked up her 19th victory of the season. She leads the team from the circle with an ERA of 1.93 and 140 strikeouts so far this season.

At the plate, Sydney Broderick leads the team with 21 RBI while hitting .367 with a .479 OBP and three home runs. Gordy Bravo leads the team with a .441 batting average and a .491 OBP while Lacey Hofstedt has 14 stolen bases with a .410 average at the plate.

Utah State

The Cougars are 13-1 against Utah State in Logan. The Aggies are led from the circle by Noelle Johnson (9-9, 3.26) while Sarah Chow (.443 BA, .504 OBP), Alleyah Armendariz (.337 BA, 7 HR, 18 RBI) and Hailey Froton (.352 BA, 29 RBI) have helped pace the offense.

Saint Mary's

BYU is 11-0 all-time against Saint Mary's with the last meeting a 3-0 Cougar win in 2014. The two teams have never faced each other at Moraga. The Gaels have seen two pitchers with a majority of the innings in Katie Moss (8-4, 3.92, 78.2 IP) and Lujane Mussadi (5-13, 4.45, 113.1 IP). Andrea Hazel (.326 BA, 2 HR, 13 RBI), Sarah Lira (.210 BA, 8 HR, 18 RBI) and Loralie Fitzpatrick (.250, 4 HR, 16 RBI) have fueled Saint Mary's offense.

Links to live stats, video streaming and radio are available on the softball schedule page.

TEAM STAT RANKINGS (NCAA RANK-CONFERENCE RANK-VALUE)

| Category (#ranked) | BYU | | | SMC | | |
|-----------------------|------|-----|-------|------|-----|-------|
| | NCAA | WCC | Value | NCAA | WCC | Value |
| Batting Average (287) | 48 | 1 | 0.316 | 250 | 5 | 0.247 |
| DP/game (283) | 152 | 6 | 0.28 | 54 | 2 | 0.39 |
| ERA (287) | 74 | 2 | 3.15 | 174 | 4 | 4.59 |
| Fielding % (287) | 215 | 6 | 0.949 | 89 | 3 | 0.964 |
| Scoring (287) | 77 | 1 | 5.41 | 235 | 5 | 3.61 |
| SB/game (287) | 60 | 1 | 1.38 | 235 | 5 | 0.53 |
| W/L % (272) | 42 | 1 | 0.724 | 172 | 4 | 0.417 |

BYU All-Time vs. WCC Opponents

| School | Overall | Home | Away | Neutral | Last Time |
|--------------|--------------|-------------|-------------|-------------|----------------|
| Sain Mary's | 11-0 | 7-0 | 0-0 | 4-0 | W 3-0, 5/10/14 |
| Pacific | 6-1 | 1-0 | 3-0 | 2-1 | W 9-6, 5/3/14 |
| San Diego | 11-4 | 0-0 | 9-3 | 2-1 | W 4-3, 4/5/14 |
| LMU | 14-4 | 4-2 | 1-1 | 9-1 | W 8-1, 4/25/14 |
| Santa Clara | 10-2 | 2-1 | 5-1 | 3-0 | W 5-0, 4/12/14 |
| Total | 52-11 | 14-3 | 18-5 | 20-3 | |

2015 RECORD WHEN

| | |
|-------------------------------|------|
| Overall | 22-8 |
| Conference | 0-0 |
| Non-Conference | 22-8 |
| Home | 3-1 |
| Away | 4-0 |
| Neutral | 15-7 |
| Day games | 20-6 |
| Night games | 2-2 |
| One Run Games | 6-2 |
| Two Run Games | 5-1 |
| Five or more run games | 9-3 |
| Extra Inning games | 0-1 |
| Shutouts | 4-2 |
| Scoring 0-2 runs | 3-5 |
| Scoring 3-5 runs | 8-2 |
| Scoring 6-9 runs | 6-1 |
| Scoring 10+ runs | 5-0 |
| Opponent scores 0-2 runs | 14-1 |
| Opponent scores 3-5 runs | 8-2 |
| Opponent scores 6-9 runs | 0-2 |
| Opponent scores 10+ runs | 0-3 |
| BYU scores 1st inning | 7-2 |
| Opponent scores 1st inning | 5-6 |
| BYU scores first | 16-3 |
| Opponent scores first | 6-5 |
| BYU out-hits opponent | 18-1 |
| Opponent out-hits BYU | 2-7 |
| Equal number of hits | 2-0 |
| BYU hits zero home runs | 13-7 |
| BYU hits one home run | 3-0 |
| BYU hits 2+home runs | 6-1 |
| Opponent hits zero home runs | 18-4 |
| Opponent hits one home run | 4-2 |
| Opponent hits 2+ home runs | 0-2 |
| BYU has no errors | 7-2 |
| BYU has one error | 7-3 |
| BYU has 2+ errors | 8-3 |
| Opponent has no errors | 3-4 |
| Opponent has one error | 8-3 |
| Opponent has 2+ errors | 11-1 |
| Game tied after fifth inning | 3-1 |
| BYU leads after fifth inning | 13-0 |
| BYU trails after fifth inning | 1-4 |
| Game tied after sixth inning | 2-1 |
| BYU leads after sixth inning | 14-0 |
| BYU trails after sixth inning | 0-4 |
| Mercy rule games | 6-3 |
| In February | 13-6 |
| In March | 9-2 |
| In April | 0-0 |
| In May | 0-0 |
| On Tuesday | 2-0 |
| On Wednesday | 0-0 |
| On Thursday | 6-2 |
| On Friday | 7-3 |
| On Saturday | 7-3 |
| vs. left-handed starter | 1-2 |
| vs. right-handed starter | 21-6 |

TEAM GAME HIGHS

| | |
|--------------|----------------------|
| At Bats | 35 vs. UCSB |
| Runs scored | 16 vs. UCSB |
| Hits | 13 vs. SIU, vs. USU |
| RBIs | 13 vs. UCSB, vs. USU |
| Doubles | 4 at UNLV |
| Home runs | 2, seven times |
| Stolen bases | 5, SIU |
| Walks | 7, four times |
| Total Bases | 23 vs. SIU |
| DPs turned | 2 vs. SJSU, vs. OKST |

INDIVIDUAL STAT RANKINGS

| Category (#ranked) | Player | NCAA Rank | WCC Rank | Value |
|-----------------------------|--------------------|-----------|----------|-------|
| Batting Average (147) | Gordy Bravo | 52 | 1 | 0.441 |
| | Lacey Hofstedt | 124 | 2 | 0.413 |
| ERA (150) | McKenna Bull | 59 | 2 | 1.93 |
| Sac Files (47) | McKenzie St. Clair | 29 | 2 | 3 |
| | Lauren Bell | 29 | 2 | 3 |
| | Gordy Bravo | 116 | 4 | 2 |
| Sac Hits per game (133) | Mercedes O'Connor | 19 | 1 | 0.32 |
| Stolen Bases (150) | Lacey Hofstedt | 61 | 1 | 0.50 |
| Strikeouts (30) | McKenna Bull | 26 | 1 | 140 |
| Ks/7 innings (150) | McKenna Bull | 101 | 2 | 6.9 |
| | Arianna Paulson | 126 | 3 | 6.5 |
| Toughest to strikeout (150) | Sydney Broderick | 35 | 2 | 26.3 |
| Victories (40) | McKenna Bull | 5 | 1 | 19 |
| Walks (134) | Ashley Thompson | 81 | 1 | 0.68 |

THROUGH 30 GMS: 2014 VS. 2015

| Category | 2014 | 2015 |
|-----------------------|-------|------|
| Record | 11-19 | 22-8 |
| Home Runs | 23 | 17 |
| Doubles | 35 | 29 |
| Triples | 1 | 8 |
| Batting Avg. | .265 | .321 |
| RBI | 112 | 149 |
| Hits | 214 | 247 |
| Stolen Bases | 23 | 40 |
| Errors | 33 | 41 |
| Hits Allowed | 223 | 187 |
| Earned Runs | 122 | 86 |
| Strikeouts | 191 | 179 |
| Home Runs Allowed | 18 | 10 |
| Doubles Allowed | 37 | 23 |
| Triples Allowed | 2 | 1 |
| Opponent Batting Avg. | .280 | .256 |
| Double Plays | 8 | 11 |

INDIVID. 2014 TOTAL VS. CURRENT 2015

| Player | Batting Avg. | | Runs | | RBI | |
|--------------------|--------------|------|------|------|------|------|
| | 2014 | 2015 | 2014 | 2015 | 2014 | 2015 |
| Gordy Bravo | .309 | .448 | 19 | 23 | 12 | 17 |
| Lauren Bell | .329 | .313 | 33 | 19 | 8 | 16 |
| Sydney Broderick | .360 | .373 | 37 | 17 | 31 | 24 |
| Lacey Hofstedt | .247 | .424 | 23 | 18 | 4 | 13 |
| Mercedes O'Connor | .326 | .260 | 18 | 22 | 20 | 21 |
| McKenzie St. Clair | .350 | .342 | 36 | 18 | 34 | 11 |
| Coco Tauali'i | .210 | .258 | 19 | 16 | 12 | 11 |
| Ashley Thompson | .260 | .278 | 19 | 12 | 31 | 20 |

| Player | IP | ERA | | Hits | | Ks | | |
|--------------|-------|-------|------|------|------|------|------|-----|
| | | 2014 | 2015 | 2014 | 2015 | 2014 | 2015 | |
| McKenna Bull | 173.1 | 144.1 | 3.15 | 1.94 | 160 | 121 | 206 | 142 |

SEASON/CAREER BESTS

HITTING

| No. | Name | Runs | Hits | RBI |
|-----|--------------------|----------------------------------|----------------------------------|-----------------------------|
| 0 | Mercedes O'Connor | 3, Oregon St./2, three times | 4, SIU/same | 4, UNR/5, LMU '14 |
| 1 | Lacey Hofstedt | 2, three times/2, four times | 3, Baylor/3, three times | 5, USU/same |
| 2 | Gordy Bravo | 2, three/2, multiple times | 3, five times/4, Idaho State '13 | 4, Indiana/same |
| 3 | Ashley Thompson | 2, twice/3, Seattle '14 | 3, Oregon St./3, four times | 5, Oregon St./same |
| 4 | Sydney Broderick | 2, three times/3, LMU '14 | 2, multiple/3, six times | 4, twice/same |
| 6 | Ashley Godfrey | 2, Texas A&M/same | 2, Texas A&M/same | -- |
| 9 | Lauren Bell | 4, UCSB/same | 3, WSU/3, four times | 5, SIU/same |
| 10 | Karli Lehr | -- | -- | -- |
| 12 | Megan Arnold | --/2, SUU '13 | 2, twice/3, SUU '14 | 2, twice/4, UMKC '12 |
| 13 | McKenzie St. Clair | 3, USU/3, twice | 3, twice/3, five times | 2, twice/4, Idaho State '14 |
| 16 | Alexa Strid | 2, three times/same | 2, three times/same | 2, three times/same |
| 18 | Caitlyn Larsen | 1, twice/same | 1, twice/same | 1, UCSB/same |
| 22 | Madison Merrell | 2, SIU/same | 1, twice/same | 1, SJST/same |
| 25 | Coco Tauali'i | 2, three times/2, multiple times | 2, three times/4, SUU '13 | 4, UCSB/4, twice |
| 27 | Brittany Call | 1, twice/same | 1, CSF/same | 1, Texas A&M/same |
| 32 | Greta Bodine | 1, UConn/same | -- | -- |

PITCHING

| No. | Name | Innings | Strikeouts | No-Hitters |
|-----|-----------------|----------------------------|------------------|------------|
| 5 | McKenna Bull | 8.2, Maryland/same | 14, MD/14, twice | --/-- |
| 7 | Arianna Paulson | 6.0, OKST/same | 5, N. Colo./same | -- |
| 22 | Madison Merrell | 3.2, CSF/same | 1, twice/same | -- |
| 33 | Ashley Thompson | 5.0, OKST/7.0, Fordham '14 | 4, OKST/7, twice | --/-- |

BYU HITTING STREAKS

| PLAYER | SEASON | CURRENT | CAREER |
|--------------------|--------|---------|--------|
| Mercedes O'Connor | 6 | 5 | 9 |
| Lacey Hofstedt | 9 | 1 | 9 |
| Gordy Bravo | 13 | 3 | 13 |
| Ashley Godfrey | 1 | - | 1 |
| Lauren Bell | 10 | 2 | 10 |
| Karli Lehr | - | - | - |
| Megan Arnold | 2 | - | 3 |
| McKenzie St. Clair | 5 | 1 | 6 |
| Alexa Strid | 2 | 2 | 2 |
| Caitlyn Larsen | 1 | - | 1 |
| Madison Merrell | 1 | - | 1 |
| Coco Tauali'i | 6 | - | 8 |
| Brittany Call | 1 | - | 1 |
| Greta Bodine | - | - | - |
| Ashley Thompson | 3 | 2 | 8 |
| Sydney Broderick | 14 | 2 | 16 |

BYU ON-BASE STREAKS

| PLAYER | SEASON | CURRENT | CAREER |
|--------------------|--------|---------|--------|
| Mercedes O'Connor | 11 | 5 | 11 |
| Lacey Hofstedt | 9 | 1 | 9 |
| Gordy Bravo | 24 | 5 | 25 |
| Ashley Godfrey | 1 | - | 1 |
| Lauren Bell | 10 | 2 | 15 |
| Karli Lehr | - | - | - |
| Megan Arnold | 2 | - | 5 |
| McKenzie St. Clair | 12 | 1 | 17 |
| Alexa Strid | 4 | 2 | 4 |
| Caitlyn Larsen | 2 | - | 2 |
| Madison Merrell | 2 | 2 | 2 |
| Coco Tauali'i | 6 | 2 | 23 |
| Brittany Call | 1 | - | 1 |
| Greta Bodine | - | - | - |
| Ashley Thompson | 9 | 6 | 15 |
| Sydney Broderick | 17 | 17 | 25 |

HOW MANY GAMES WITH... 2015 CAREER

PERFECT HITTING % (MIN. 3 AB)

| | | |
|--------------------|---|---|
| Coco Tauali'i | - | 1 |
| McKenzie St. Clair | - | 1 |
| Sydney Broderick | - | 3 |
| Mercedes O'Connor | - | 1 |
| Gordy Bravo | 1 | 1 |
| Lauren Bell | 1 | 1 |
| Ashley Thompson | 2 | 2 |

3+ HITS

| | | |
|--------------------|---|----|
| Mercedes O'Connor | 1 | 3 |
| Coco Tauali'i | - | 2 |
| Lauren Bell | 1 | 4 |
| McKenzie St. Clair | 2 | 5 |
| Ashley Thompson | 2 | 5 |
| Sydney Broderick | - | 6 |
| Gordy Bravo | 5 | 10 |
| Lacey Hofstedt | 1 | 6 |

3+ RBI

| | | |
|--------------------|---|---|
| Mercedes O'Connor | 2 | 3 |
| Megan Arnold | - | 4 |
| Sydney Broderick | 3 | 7 |
| McKenzie St. Clair | - | 3 |
| Ashley Thompson | 1 | 5 |
| Lacey Hofstedt | 1 | 2 |
| Gordy Bravo | 1 | 5 |
| Coco Tauali'i | 1 | 5 |
| Lauren Bell | 3 | 3 |

2+ STOLEN BASES

| | | |
|-----------------|---|----|
| Lacey Hofstedt | 2 | 16 |
| Ashley Thompson | 1 | 1 |

10+ STRIKEOUTS

| | | |
|--------------|---|---|
| McKenna Bull | 2 | 4 |
|--------------|---|---|

LAST TIME BYU...

Recorded 10-14 hits in a game 13 vs. Utah State (3/31/15)
 Recorded 15-19 hits in a game 16 vs. Seattle (2/13/14)
 Recorded 20+ hits in a game 20 vs. Southern Utah (5/04/10)
 Scored 10-14 runs 13 vs. Utah State (3/31/15)
 Scored 15+ runs. 16 vs. UCSB (2/19/15)
 Scored 10+ runs in an inning 11 vs. Saint Mary's (5/03/13)
 Drew eight or more walks 8 vs. UNR (2/26/15)
 Stole five or more bases 5 vs. SIU (2/27/15)
 Hit five or more home runs 5 vs. Southern Utah (4/07/10)
 Hit 10+ home runs in a game 10 at Utah Valley (4/16/08)
 Had 3+ players with 3+ hits Hofstedt, Broderick, St. Clair vs. Idaho St. (3/29/14)
 Struck out 15+ batters 15 at Fresno State (3/05/09)
 Defeated a team ranked 11-25 6-4 vs. No. 11 Hawai'i (5/11/12)
 Defeated a team ranked 6-10. 7-2 vs. No. 9 Cal Berkley (3/19/11)
 Defeated a top 5 team 6-5 vs. No. 2/3 Oregon (3/25/14)
 Lost to a top 5 team 3-2 vs. No. 2 Oregon (3/12/14)
 Lost a non-conference game at home 13-0 vs. UVU (3/21/15)
 Lost a conference game at home 2-1 vs. Santa Clara (4/12/14)
 Won a run-rule game 13-2 (5) vs. Utah State (3/31/15)
 Lost a run-rule game 13-0 (5) vs. UVU (3/21/15)
 Won an extra inning game 5-4 (8) vs. Utah State (4/02/14)
 Lost an extra inning game 1-2 (9) vs. Maryland (2/19/15)
 Played an error free game. vs. Weber State (3/24/15)
 Didn't have a strikeout at the plate vs. Oklahoma State (3/21/15)
 Multiple double plays 2 vs. Oklahoma State (3/21/15)
 Triple play vs. UVa (2/21/14)
 Had back-to-back home runs. Coco Tauali'i and Carly Duckworth vs. Seattle (2/13/14)
 Had back-to-back-to-back home runs Fitu, Atagi, Hudson-Shamo vs. UNLV (5/05/11)
 Had 3+ players with 3+ RBIs Willard, Toney, Arnold vs. Utah State (4/13/12)

LAST TIME A BYU PLAYER...

Recorded five or more hits 5, Jess Fitu vs. Cal State Northridge (2/19/11)
 Recorded 3 or more hits 3, McKenzie St. Clair vs. Utah State (3/31/15)
 Hit 1.000 (min. 3 AB) (3-for-3) Ashley Thompson and Lauren Bell vs. Weber State (3/24/15)
 Scored four or more runs 4, Lauren Bell vs. UCSB (2/19/15)
 Batted in five or more runs 5, Lacey Hofstedt vs. Utah State (3/31/15)
 Had a multi-home run game 2, Mercedes O'Connor vs. Northern Colo. (2/27/15)
 Hit for the cycle Never Happened
 Hit a grand slam Coco Tauali'i vs. UCSB (2/19/15)
 Drew 4+ walks in a game 4, Jessica Dugas at Utah Valley (5/02/12)
 Stole 3+ bases in a game 3, Lacey Hofstedt vs. UNR (2/26/15)
 Had a walk-off home run Ashley Thompson vs. Oklahoma State (3/21/15)
 Had a walk-off hit Mercedes O'Connor vs. Hawai'i (2/12/15)

LAST TIME A BYU PITCHER...

Struck out 10+ batters 10, McKenna Bull vs. WCU (3/14/15)
 No walks (min. 4 IP) Bull vs. Oregon State (2/21/15)
 Threw a no-hitter Tori Almond, McKenna Bull and Ashley Thompson at UVU (4/04/14)
 Threw a perfect game. Hannah Howell vs. LMU (4/13/13)

IN THE RECORD BOOKS

Season Wins

| Player | Season | Wins |
|----------------------|-------------|-----------|
| 1. Paige Affleck | 2010 | 32 |
| 2. Paige Affeck | 2011 | 26 |
| Summer Tobias | 2006 | 26 |
| 4. Christie Zinanti | 2009 | 21 |
| 5. Tori Almond | 2012 | 20 |
| Hannah Howell | 2012 | 20 |
| Christie Zinanti | 2007 | 20 |
| McKenna Bull | 2015 | 20 |
| 8. Paige Affleck | 2009 | 19 |
| Christina Gwyn Trice | 2008 | 19 |
| Summer Tobias | 2005 | 19 |

Career Strikeouts

| Player | Seasons | Total |
|------------------------|-------------------|------------|
| 1 Paige Affleck | 2008-11 | 803 |
| 2 Christie Zinanti | 2007-10 | 524 |
| 3 Tori Almond | 2011-14 | 504 |
| 4 Christina Gwyn Trice | 2007-08 | 419 |
| 5 Hannah Howell | 2010-13 | 357 |
| 6 McKenna Bull | 2014-pres. | 348 |



2015 WCC STANDINGS (AS OF 3/31)

| | WCC | Overall |
|------------------|-----|---------|
| BYU | 0-0 | 22-8 |
| Saint Mary's | 0-0 | 15-21 |
| Pacific | 0-0 | 10-26 |
| San Diego | 0-0 | 21-16 |
| Loyola Marymount | 0-0 | 18-21 |
| Santa Clara | 0-0 | 10-23 |

2015 WCC PLAYERS OF THE WEEK

| | |
|---------|--------------------------------|
| Week 1 | Gianetta France, Santa Clara |
| Week 2 | Nicole Zapotoczny, Pacific |
| Week 3 | Gordy Bravo, BYU |
| Week 4 | Mercedes O'Connor, BYU |
| Week 5 | Alicia Brown, Loyola Marymount |
| Week 6 | Kailey Hill, San Diego |
| Week 7 | Sydney Broderick, BYU |
| Week 8 | Sydney Broderick, BYU |
| Week 9 | |
| Week 10 | |
| Week 11 | |
| Week 12 | |
| Week 13 | |

2015 WCC PITCHERS OF THE WEEK

| | |
|---------|-------------------------------|
| Week 1 | Paige von Sprecken, San Diego |
| Week 2 | McKenna Bull, BYU |
| Week 3 | McKenna Bull, BYU |
| Week 4 | McKenna Bull, BYU |
| Week 5 | Dani Bonnet, Pacific |
| Week 6 | Paige von Sprecken, San Diego |
| Week 7 | Paige von Sprecken, San Diego |
| Week 8 | Katie Moss, Saint Mary's |
| Week 9 | |
| Week 10 | |
| Week 11 | |
| Week 12 | |
| Week 13 | |

STAT RANKINGS: INDIVIDUAL AND TEAM

| Category (#ranked) | Player | NCAA Rank | WCC Rank | Value |
|-----------------------------|--------------------|-----------|----------|-------|
| Batting Average (147) | Gordy Bravo | 52 | 1 | 0.441 |
| | Lacey Hofstedt | 124 | 2 | 0.413 |
| ERA (150) | McKenna Bull | 59 | 2 | 1.93 |
| Sac Flies (47) | McKenzie St. Clair | 29 | 2 | 3 |
| | Lauren Bell | 29 | 2 | 3 |
| | Gordy Bravo | 116 | 4 | 2 |
| Sac Hits per game (133) | Mercedes O'Connor | 19 | 1 | 0.32 |
| Stolen Bases (150) | Lacey Hofstedt | 61 | 1 | 0.50 |
| Strikeouts (30) | McKenna Bull | 26 | 1 | 140 |
| Ks/7 innings (150) | McKenna Bull | 101 | 2 | 6.9 |
| | Arianna Paulson | 126 | 3 | 6.5 |
| Toughest to strikeout (150) | Sydney Broderick | 35 | 2 | 26.3 |
| Victories (40) | McKenna Bull | 5 | 1 | 19 |
| Walks (134) | Ashley Thompson | 81 | 1 | 0.68 |

WCC PLAYERS OF THE WEEK

SAN BRUNO, Calif.-- Brigham Young University catcher Sydney Broderick and Saint Mary's College Kate Moss have been respectively named the West Coast Conference Player and Pitcher of the Week in the sport of softball, the conference office announced Monday.

Broderick led the Cougars' offense in an 8-0, five-inning win at Weber State. The catcher out of Ashburn, Virginia, hit 2-for-3 with a home run and four RBI in the game to help BYU improve to 21-8 on the season as they snapped the Wildcats' (22-11) seven-game win streak. In the bottom of the third and with runners on first and second, Broderick smashed a three-run homer over the center-field fence for her third of the season. It was also the sixth time in her career that she recorded three or more RBI in a single game. Broderick collects her second weekly nod of the season, as she earned the honor last week.

Moss led the Gaels to a 3-1 record in wins over Brown and Missouri-Kansas City. She began the week taking a no-hitter into the seventh inning against the Bears. The Gaels won the game 1-0 in 8 innings as Moss went the distance. Her final line was 8.0 innings, one hit, no runs and eight strikeouts in the complete game. The following day, Moss took the circle again against UMKC and earned another complete game victory. This time she fanned 7.0 innings, allowed three hits, one run and struck out eight. For the week, Moss tossed two complete games in 15.1 inning, allowed just four hits, one run and struck out 17, while earning a 0.46 ERA. The sophomore Cupertino, California, native collects her second WCC Pitcher of the Week honor, as she first won the accolade on April 28, 2014.

Also nominated...Hailey Sparacino, Saint Mary's pitchers... McKenna Bull, BYU

PRESEASON POLL

SAN BRUNO, Calif. - Brigham Young University has been tabbed by the league coaches to win the West Coast Conference Softball Championship this spring, it was announced by the league office Wednesday.

BYU earned top billing collecting five of the six first-place votes and totaled 25 points in the poll. The defending WCC Champion is coming off a 39-23, 12-2 WCC record, after capturing its 10th consecutive postseason bid that ended at the NCAA Regional Semifinal. Thirteen-year head coach Gordon Eakin returns 12 players from that squad, including All-American outfielder Gordy Bravo, All-Conference first team selection Tori Almond, and All-Conference second team honoree Ashlee Robinson. Four sophomores are also returning to the Cougars that include catcher/outfielder Sydney Broderick, infielder Lauren Bell, outfielder/second baseman McKenzie St. Clair, and pitcher McKenna Bull all of which were named to this year's preseason All-Conference team.

HEAD COACH GORDON EAKIN

Eakin is entering his 13th season as the Cougars' head coach and his 16th season at BYU overall.

Eakin was named head coach in July 2002 after working as an assistant coach since the softball program's inception in 2000. Since that time he has led the Cougars to five Mountain West Conference championships, one Western Athletic Conference tournament championship, one West Coast Conference championship and 10 NCAA tournament appearances.

The 2014 WCC Coach of the Year has coached 12 All-Americans, eight conference players of the year, four conference freshmen of the year and two MWC Pitchers of the Year during his tenure.

In 2010, Eakin guided the Cougars to 46 wins, the most in school history, as BYU advanced to the NCAA Super Regionals for the first time ever with wins over East Carolina and host Texas before ending its season at national runner-up Arizona. The Cougars finished second in the country in batting average, seventh in scoring and ninth in slugging percentage as a team.

Known as one of the best hitting coaches in the country, Eakin has helped BYU finish in the top-ten nationally six times in slugging percentage, six times in home runs per game, four times in batting average and four times in scoring.

In addition to his duties at BYU, Eakin was also an assistant coach and hitting coach for the USA National Team in 2009. In the summer of 2010, Eakin helped guide the National Team to a 17-2 record as USA won the World Championship in Venezuela, the World Cup in Oklahoma and the Japan Cup championship in Sendai, Japan.

Before entering the coaching ranks, Eakin was a successful baseball and softball player. After playing collegiate baseball at the University of Utah, Eakin signed with the Oakland Athletics organization where he played for three years.

Eakin went on to join the United States All-Star team, playing in three U.S. Olympic sports festivals in 1986, 1993 and 1994, winning bronze, silver and gold, respectively. While on the team, Eakin was honored on the ISC All-World First Team and was an ASA All-American. He would later go on to play shortstop on the internationally ranked Larry H. Miller Toyota Fast Pitch team, eventually earning induction into the Utah Fast Pitch Hall of Fame in 1998.

Eakin is a native of Holladay, Utah, and graduated from Granite High. He currently resides in Sandy, Utah, and is married to Barbi. They are the parents of three children (Alicia, Ryan & Parker) and have five grandsons.



EAKIN AT A GLANCE

- Record of 504-231 (.#) in his 13th year as head coach
- Former USA National Team hitting coach
- Guided BYU to five Mountain West Conference championships (2005, 2007, 2009, 2010, 2011) while never finishing lower than third in the conference
- Led BYU to the WAC tournament championship in 2012, the 2013 PCSC championship and the 2014 WCC championship
- Five-time coach of the year (MWC: 2009, 2010, 2011, PCSC 2013 & WCC 2014)
- Led BYU to first-ever NCAA Super Regional appearance in 2010 and 10-straight NCAA tournament appearances overall
- Coached 12 All-Americans
- Coached 8 conference players of the year, 4 conference freshmen of the year and 2 MWC Pitchers of the Year
- Coached 23 All-Region performers, 40 all-conference performers
- Guided BYU to top-10 national finishes in slugging percentage six times, home runs per game six times, batting average four times and scoring four times
- Coached two players who would go on to play professionally, including MWC Player of the Year Angeline Quiocho who finished first in the nation in home runs per game and RBI per game in 2010

EAKIN COACHING RECORD

| YEAR | Overall Record | CONF. | CONF. FINISH | NCAA |
|---------------|----------------|--------|--------------|-------|
| 2003 | 36-17 | 10-7 | 3rd/MWC | - |
| 2004 | 34-18 | 11-8 | 3rd/MWC | - |
| 2005 | 45-14 | 16-2 | 1st/MWC | 1-2 |
| 2006 | 43-22 | 15-5 | 2nd/MWC | 1-2 |
| 2007 | 43-20 | 16-4 | 1st/MWC | 2-2 |
| 2008 | 44-20 | 14-6 | 2nd/MWC | 1-2 |
| 2009 | 40-18 | 12-2 | 1st/MWC | 2-2 |
| 2010 | 46-13 | 12-3 | 1st/MWC | 3-2 |
| 2011 | 40-18 | 11-2 | 1st/MWC | 2-2 |
| 2012 | 45-15 | 15-4 | 1st/WAC | 2-2 |
| 2013 | 33-25 | 19-5 | 1st/PCSC | 0-2 |
| 2014 | 34-23 | 12-2 | 1st/WCC | 1-2 |
| 2015 | 22-8 | -- | -- | -- |
| TOTAL | 505-231 (.736) | 163-50 | - | 15-20 |
| (13th Season) | | | | |

Assistant Coaches

Pete Meredith

2014-Present

Coaching Experience

The Pitching Academy

Playing Career

- Played professional men's fastpitch for Sportsman Enterprises, Dave Frye Plastering, Farm Tavern, Trans Aire International and Larry Miller Toyota
- Meredith pitched in a record 23 consecutive International Softball Congress World Tournaments
- Set records for most tournament wins (61), no hitters (8), strikeouts in a tournament (100) and strikeouts in a game (21)
- Named to the All-World Team seven times
- Inducted into the International Softball Congress Hall of Fame in 2007
- Holds the record for most wins in ASA national championship play, compiling a 55-27 record before retiring from Major competition in 2002.
- Shares the record for most wins in one Men's Major National Championship with eight in 1988 for Trans-Aire of Elkhart, Ind. and is the record holder for most innings pitched in one national tourney (88) in that same national championship.

Hometown

Dunedin, New Zealand



Kristin Delahoussaye

2014-Present

Coaching Experience

- Assistant Softball and Strength Coordinator
- Dixie State (2013)
- Fifth-Year coach
- BYU (2012)

Playing Career

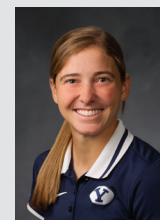
- Four-year starter at second base for BYU (2008-2011)
- Played and started in every game of her career except for one weekend
- Named first-team all-conference and all-region three times
- For her career: second in doubles (45), walks (144), at bats (706) and runs (198) sixth in hits (233) and triples (6) seventh in total bases (347) eighth in stolen bases (31) and slugging percentage(.591) 10th in batting average at BYU

Education

Brigham Young University (2012)

Hometown

Las Vegas



| No. | Name | Pos. | B/T | Ht. | Yr. | Hometown (Previous School) |
|-----|---------------------------------|---------|-----|------|-----|---------------------------------------|
| 12 | Megan Arnold | C, 1B | R/R | 5-8 | Sr. | Yorba Linda, CA/Esperanza HS |
| 9 | Lauren Bell | INF | L/R | 5-9 | So. | Murray, UT/Murray HS |
| 32 | Greta Bodine (BO-deen) | OF | R/R | 5-7 | Fr. | Scarsdale, NY/Scarsdale HS |
| 2 | Gordy Bravo | OF | L/R | 5-2 | Jr. | Corona, CA/Eleanor Roosevelt HS |
| 4 | Sydney Broderick | C, OF | L/L | 5-4 | So. | Ashburn, VA/Stone Bridge HS |
| 5 | McKenna Bull | P | R/R | 5-10 | So. | Ogden, UT/Weber HS |
| 27 | Brittany Call | OF | R/R | 5-2 | So. | Mission Viejo, CA/Mater Dei HS |
| 6 | Ashley Godfrey | INF, OF | R/R | 5-6 | Fr. | Buckeye, AZ/Estrella Foothills HS |
| 1 | Lacey Hofstedt | OF | L/R | 5-6 | Sr. | Folsom, CA/Folsom HS |
| 18 | Caitlyn Larsen | INF | R/R | 5-10 | Fr. | Centerville, UT/Viewmont HS |
| 10 | Karli Lehr (Leer) | INF | L/R | 5-5 | Fr. | Las Vegas, NV/Arbor View HS |
| 22 | Madison Merrell | INF, P | R/R | 5-8 | Fr. | Queen Creek, AZ/Queen Creek HS |
| 0 | Mercedes O'Connor | OF, C | R/R | 5-7 | So. | Huntington Beach, CA/Edison HS |
| 7 | Arianna (AR-ee-awn-Nuh) Paulson | P, INF | R/R | 5-8 | Fr. | Payson, AZ/Payson HS |
| 13 | McKenzie St. Clair | 2B, OF | R/R | 5-5 | So. | Peoria, AZ/Sunrise Mountain HS |
| 16 | Alexa Strid | INF | R/R | 5-8 | Fr. | Stephens City, VA/Karl Maeser Academy |
| 25 | Coco Tauali'i (Tau-wa-lee-ee) | INF, OF | R/R | 5-4 | Jr. | Torrance, CA/North HS |
| 3 | Ashley Thompson | INF, P | R/R | 6-2 | So. | Connell, WA/Connell HS |

Head Coach: Gordon Eakin (13th year)

Assistant Coach: Pete Meredith (2nd year)

Assistant Coach: Kristin Delahoussaye (2nd year)

Student Coach: Katie Manuma (1st year)

Athletic Trainer: Chris Linde (16th year)

SENIORS

Lacey Hofstedt
Megan Arnold

JUNIORS

Gordy Bravo
Coco Tauali'i

SOPHOMORES

Sydney Broderick
Mercedes O'Connor
Ashley Thompson
McKenzie St. Clair
Lauren Bell
McKenna Bull
Brittany Call

FRESHMEN

Arianna Paulson
Alexa Strid
Madison Merrell
Ashley Godfrey
Greta Bodine
Caitlyn Larsen
Karli Lehr

MARRIED

Lacey Hofstedt

PITCHERS (4)

McKenna Bull
Ashley Thompson
Arianna Paulson
Madison Merrell

CATCHERS (3)

Megan Arnold
Sydney Broderick
Mercedes O'Connor

INFIELDERS (11)

Coco Tauali'i
Lauren Bell
McKenzie St. Clair
Ashley Thompson
Alexa Strid
Madison Merrell
Ashley Godfrey
Arianna Paulson
Karli Lehr
Megan Arnold
Caitlyn Larsen

OUTFIELDERS (9)

Gordy Bravo
Lacey Hofstedt
McKenzie St. Clair
Brittany Call
Mercedes O'Connor
Sydney Broderick
Ashley Godfrey
Coco Tauali'i
Greta Bodine

ARIZONA

Ashley Godfrey
Arianna Paulson
McKenzie St. Clair
Madison Merrell

CALIFORNIA

Lacey Hofstedt
Mercedes O'Connor
Gordy Bravo
Megan Arnold
Coco Tauali'i
Brittany Call

NEVADA

Karli Lehr

NEW YORK

Greta Bodine

UTAH

McKenna Bull
Lauren Bell
Caitlyn Larsen

VIRGINIA

Sydney Broderick
Alexa Strid

WASHINGTON

Ashley Thompson