

# BYU BASKETBALL

Norma Collett. BYU Athletic Communications | O: (801) 422-4908 | C: (801) 372-0989 | norma\_collett@byu.edu |

## BYU 2012-13 SCHEDULE

N1	Thu	Chadron State (Exh)	W 89-51	BYUtv
N2	Fri	Dixie State (Exh)	W 79-57	BYUtv
N9	Fri	Weber State	W 80-55	BYUtv
N13	Tue	at Dartmouth	W 58-57	BYU R
N15	Thu	at Boston College	L 56-62	BYU R
N16	Fri	at Harvard	L 65-71	BYU R
N20	Tue	at Arizona	W 62-48	BYU R
N24	Sat	at Washington State	L 67-52	
N28	Wed	Creighton*	L 65-62ot	BYUtv

D4	Tue	Utah State	W 81-77	BYUtv
D8	Sat	at Utah	W 53-48	BYU R
D15	Sat	Tulsa	2 p.m.	BYUtv
D18	Tue	UC Santa Barbara	2 p.m.	BYUtv
D20	Thu	Seattle University	3 p.m.	BYUtv
D29	Sat	Western New Mexico	4 p.m.	BYUtv

J5	Sat	San Francisco^	2 p.m.	BYUtv
J10	Thu	at San Diego^	7 p.m.	
J12	Sat	Pepperdine^	2 p.m.	
J17	Thu	at Gonzaga^	6 p.m.	BYU R
J24	Thu	Loyola Marymount^	7 p.m.	BYUtv
J26	Sat	at San Francisco^	2 p.m.	BYU R
J31	Thu	Saint Mary's^	7 p.m.	BYUtv

F2	Sat	at Santa Clara^	2 p.m.	BYU R
F7	Thu	San Diego^	7 p.m.	BYUtv
F9	Sat	at Saint Mary's^	2 p.m.	BYU R
F14	Thu	Santa Clara^	7 p.m.	BYUtv
F16	Sat	at Pepperdine^	2 p.m.	BYU R
F21	Thu	Portland^	7 p.m.	BYUtv
F23	Sat	Gonzaga^	2 p.m.	BYUtv
F28	Thu	at Loyola Marymount^	7 p.m.	

M2	Sat	at Portland^	2 p.m.	BYU R
M6	Wed	at WCC Champs	TBA	TBA
M7	Thu	at WCC Champs	TBA	TBA
M8	Fri	at WCC Champs	TBA	TBA
M9	Sat	at WCC Champs	TBA	TBA
M11	Mon	at WCC Champs	TBA	TBA

\*at EnergySolutions Arena  
^ West Coast Conference game

BYU	CATEGORY	TULSA
5-4	W-L	3-5
0-0	Last 10	0-0
3-2	Last 5	3-2
63.2	PPG	63.6
.392	FG%	.379
.318	3FG%	.282
.735	FT%	.660
38.0	RPG	39.6
15.8	Assist/Game	12.9
15.3	TO/Game	18.4
7.2	Steals/Game	9.0
3.6	Blocks/Game	2.5



BYU (5-4, 0-0 WCC)  
**COUGARS**

Head Coach: Jeff Judkins  
Alma Mater: Utah, 1978  
Career Record: 236-119 (12th)  
Record at BYU: Same

## GAME INFORMATION

TV: BYUtv  
TV Talent: Robbie Bullough (play-by-play)  
Kristen Kozlowski (analyst)  
Live Video: byutvsports.com  
Live Stats: byucougars.com



## SERIES HISTORY

**TULSA**  
BYU leads: 6-0  
BYU at home: 2-0  
BYU in Tulsa: 3-0  
BYU in Neutral Site: 1-0  
BYU under Judkins: 1-0  
Last Meeting: BYU won 64-61 in 2011

UNIV. OF TULSA (3-5, 0-0)  
**GOLDEN HURRICANES**

Head Coach: Matilda Mossman  
Alma Mater: W. Kentucky, 1979  
Career Record: 160-108  
Record at Tulsa: 13-15

## BYU STORYLINES

- The Cougars return 10 letterwinners including three starters
- Junior Jennifer Hamson leads the team in points and rebounds averaging 14.0 ppg and 9.5 rpg (has only played in 2 games to date) ... Kim Beeston, who has played in all games, averages 10.4 ppg while Morgan Bailey, who also has played in all games averages 6.1 rpg) ...Haley Steed is the team's assists and steals leader averaging 7.4 apg and 2.2 spg
- In 5 of the 9 games played to date, BYU had 3 players score in double digits
- Since the season began, coach Judkins has had 5 different starting lineups ... in the game at Utah, sophomore Xojian Harry started for Lexi Eaton who is out the rest of the season due to an ACL injury

## BYU PROJECTED STARTING LINEUP



**#33 | Haley Steed**  
Guard | 5-4 | GS.  
Syracuse, UT  
Clearfield HS

GP/GS	MPG	Pts	Reb	Ast	Stl	FG%	3PT%	FT%
9/9	36.0	9.1	3.9	7.4	2.2	.289	.321	.867

**Last Game:** Tied her season-high in points with 22 while getting 6 rebounds, 3 assists and 1 steal

**Notes:** With the 22 points at Utah, Steed reached 1,000-points and becomes the 23rd player to reach the exclusive club... Her 1,014 total puts her in 21st place overall



**#4 | Kim Parker Beeston**  
Guard | 5-11 | Jr.  
Heber City, UT  
Wasatch HS

GP/GS	MPG	Pts	Reb	Ast	Stl	FG%	3PT%	FT%
9/9	33.3	10.4	4.6	2.0	0.9	.397	.379	.714

**Last Game:** Tallied 6 points, 3 rebounds, and 1 assist in 36 minutes of playing time ... all 6 points were from 3-point range

**Notes:** Has made the most 3-pointers on the team with 22 ... has 3rd best free throw percentage .714 (10-14) ... ranks 1st in 3-point field goal percentage .379 (22-58)



**#11 | Xojian Harry**  
Guard | 5-11 | So.  
Bountiful, UT  
Woods Cross HS

GP/GS	MPG	Pts	Reb	Ast	Stl	FG%	3PT%	FT%
9/1	16.0	3.6	1.2	0.4	0.6	.394	.333	.400

**Last Game:** Started in her first game ever ... put up 3 points, 1 block and grabbed 3 rebounds

**Notes:** Averages 16 minutes of playing time ... has grabbed a total of 11 rebounds, nine of which are defensive



**#41 | Morgan Bailey**  
Forward | 6-2 | So.  
Orem, UT  
Timpanogogs HS

GP/GS	MPG	Pts	Reb	Ast	Stl	FG%	3PT%	FT%
9/6	22.3	8.3	6.1	0.7	0.8	.493	.000	.700

**Last Game:** Led the team in rebounds with 8 while scoring 3 points

**Notes:** Ranks 2nd on the team in rebounds averaging 6.1 boards per contest ... has most blocks on the team with 9 ... has 2nd best field goal percentage at .493 (34-69)



**#45 | Keilani Unga**  
Forward | 6-2 | Sr.  
Warrenville, IL  
Weaton Warrenville HS

GP/GS	MPG	Pts	Reb	Ast	Stl	FG%	3PT%	FT%
9/9	26.2	5.9	4.4	0.8	0.8	.375	.000	.647

**Last Game:** Grabbed 3 defensive rebounds and dished out 1 assists ... played 21 minutes after getting 4 fouls

**Notes:** Selected team co-captain ... ranks 5th in rebounding with a 4.4 average ... ties for 3rd in steals with a .8 average ... in 2009-10 ranked fifth in total assists with 36

## OFF THE BYU BENCH

No.	Name	Pos.	Ht.	Yr.	Pts.	Reb.	Hometown (Previous School)	Notes
2	Stephanie Rovetti	G	5-6	So.	2.4	0.9	Reno, NV (Reno HS)	Suffered season ending injury to left knee
3	Ashley Garfield	G	5-11	So.	3.6	4.7	Morgan, UT (Morgan HS)	Ranks 3rd in rebound average 4.7
5	Jennifer Hamson	C	6-7	Jr.	14.0	9.5	Lindon, UT (Pleasant Grove HS)	Joins basketball after volleyball finished
12	Stephanie V. Seaborn	G/F	6-0	Jr.	3.9	3.1	Airdrie, Alb.CAN (Bert Church HS)	Averages 17.3 minutes of playing time
15	Kylie Maeda	G	5-5	Fr.	1.4	0.8	Honolulu, HI (Iolani HS)	Played in all games, averaging 8.1 min.
21	Lexi Eaton	G	5-10	So.	15.6	4.0	Mapleton, UT (Springville HS)	Season-ending ACL to right knee vs. USU
30	Kylie Brown	G	5-7	So.	0.0	0.0	Grangeville, ID (Grangeville HS)	Played two minutes at Washington State
01	Carly Stratton	G	5-7	Fr.	0.0	0.0	St. George, UT (Hurricane HS)	Played one minute vs. Weber State
50	Brooke Romney	F	6-1	Fr.	0.0	0.0	Dallas, TX (Woodrow Wilson/ASFM)	Played one minute vs. Weber State

**UNIVERSITY INFORMATION**

Location . . . . . Provo, Utah 84602  
 Elevation. . . . . 4,553 feet  
 Enrollment . . . . . 33,278  
 Founded. . . . . October 15, 1875  
 Owned . . . . . LDS Church  
 Nickname . . . . . Cougars  
 Mascot. . . . . Cosmo the Cougar  
 Colors . . . . . Dark blue and white  
 Conference . . . . . West Coast Conference  
 Arena . . . . . Marriott Center (20,900)  
 BYU President . . . . . Cecil O. Samuelson (Utah, 1970)  
 Athletic Director . . . . . Tom Holmoe (BYU, 1983)  
 Head Coach. . . . . Jeff Judkins (Utah, 1978)  
 Office Phone . . . . . 801-422-8035  
 Assist. Coaches . . . . . Chris Boettcher (BYU, 1994)  
 . . . . . Melinda Bendall (BYU, 2007)  
 . . . . . Ray Stewart (UJU, 2000)  
 Judkins Record at BYU . . . . . 236-119  
 2011-12 Record . . . . . 26-7  
 2011-12 WCC Record . . . . . 12-4, T2nd  
 2011-12 NCAA . . . . . First Round  
 2011-12 Final Ranking . . . . . n/a  
 Starters Returning/Lost . . . . . 3/2  
 Letterwinners Returning/Lost . . . . . 10/4  
 Newcomers . . . . . 4

**RETURNING STARTERS (3)**

Kim Parker Beeston	Jr.	9.5 ppg	3.1 rpg
Lexi Eaton	So.	10.5 ppg	3.1 rpg
Haley Steed	GS.	8.8 ppg	4.8 rpg

**STARTERS LOST (2)**

Dani Peterson	Sr.	4.0 ppg	3.1 rpg
Kristen Riley	Sr.	8.9 ppg	5.4 rpg

**RETURNING LETTERWINNERS (10)**

Morgan Bailey	So.	1.8 ppg	1.4 rpg
Kim Parker Beeston	Jr.	9.5 ppg	3.1 rpg
Lexi Eaton	So.	10.5 ppg	3.1 rpg
Ashley Garfield	So.	2.0 ppg	1.0 rpg
Jennifer Hamson	Jr.	9.5 ppg	5.7 rpg
Xojian Harry	So.	2.3 ppg	0.6 rpg
Stephanie Rovetti	So.	2.4 ppg	0.4 rpg
Stephanie Vermont Seaborn	Jr.	6.5 ppg	2.2 rpg
Haley Steed	GS.	8.8 ppg	4.8 rpg
Keilani Unga	Sr.	4.4 ppg	2.2 rpg*

\* Stats are from the 2009-10 season

**LETTERWINNERS LOST (4)**

Alexis Kaufusi	1.3 ppg	1.1 rpg
MacKenzie Nielson	1.8 ppg	1.4 rpg
Dani Peterson	4.0 ppg	3.1 rpg
Kristen Riley	8.9 ppg	5.4 rpg

**NEWCOMERS (4)**

Kristine Fuller	5-11 Fr.	G
Kylie Maeda	5-5 Fr.	G
Makenzi Morrison	5-8 Fr.	G
Micaelee Orton	6-2 Fr.	F

**2012 -13 BYU BASKETBALL ROSTER**

**2012-13 NUMERICAL ROSTER**

No.	Name	Pos.	Ht.	Cl.	Exp.	Hometown (Previous School)
1	Carley Stratton*	G	5-7	FR	HS	St. George, Utah (Hurricane HS)
2	Stephanie Rovetti+	G	5-6	SO	1V	Reno, Nev. (Reno HS)
3	Ashley Garfield	G	5-11	SO	1V	Morgan, Utah (Morgan HS)
4	Kim Parker Beeston	G	5-11	JR	2V	Heber City, Utah (Wasatch HS)
5	Jennifer Hamson	C	6-7	JR	2V	London, Utah (Pleasant Grove HS)
11	Xojian Harry	G	5-11	SO	1V	Bountiful, Utah (Viewmont/Woods Cross HS)
12	Stephanie Vermont Seaborn	G/F	6-0	JR	2V	Airdrie, Alberta, Canada (Bert Church HS)
15	Kylie Maeda	G	5-5	FR	HS	Honolulu, Hawai'i (Iolani HS)
21	Lexi Eaton+	G/F	5-10	SO	1V	Mapleton, Utah (Springville HS)
22	Kristine Fuller#	G	5-11	FR	HS	Crystal Beach, Fla. (Palm Harbor University HS)
23	Makenzi Morrison#	G	5-8	FR	HS	Draper, Utah (Alta HS)
30	Kylie Brown*	G	5-7	SO	1V	Grangeville, Idaho (Grangeville HS)
33	Haley Steed	G	5-4	GS	4V	Syracuse, Utah (Clearfield HS)
34	Micaelee Orton#	F	6-2	FR	HS	Kearns, Utah (Kearns HS)
41	Morgan Bailey	F	6-2	SO	1V	Orem, Utah (Timpanogos HS)
45	Keilani Unga	F	6-2	SR	3V	Warrenville, Ill. (Weaton Warrenville HS)
50	Brooke Romney*	F	6-1	FR	HS	Dallas, Texas (Woodrow Wilson/ASFM HS)

- + Suffered season-ending cartilage injury to left knee in practice
- + Suffered season-ending ACL injury to right knee in the home game vs. Utah State
- # Will redshirt the 2012-13 season
- \* Denotes walk-on for 2012-13 season

**Head Coach:** Jeff Judkins (Utah 1978) – 12th Season

**Assistant Coaches:** Chris Boettcher, Melinda Bendall, Ray Stewart

**Director of Basketball Operations:** Wendy Anae

**Athletic Trainer:** Jaime Carpenter

**PRONUNCIATION GUIDE**

- No. 11 Xojian Harry (Zoh-Zohn)
- No. 15 Kylie Maeda (Mah-eh-dah)
- No. 34 Micaelee Orton (Mah-kay-lee)
- No. 45 Keilani Unga (Kay-law-nee Oon-gah)

**Co-Team Captains**

Graduate student Haley Steed and senior Keilani Unga have been chosen by their teammates as co-captains for the 2012-13 season. This is Steed's fifth straight co-captain selection.

**Player Injury Report**

- Sophomore guard Lexi Eaton suffered a season-ending ACL injury to her right knee during the home game vs. Utah State. She will not return to play this year. Eaton had scored in double figures in the first eight games of the season.
- Sophomore guard Stephanie Rovetti suffered a cartilage injury to her left knee in a team practice. She will not be able to play this season.

2012-13 BYU Starting Lineup	
Starters	Record
Beeston, Eaton, Steed, Bailey, Unga	3-2
Beeston, Eaton, Steed, Garfield, Unga	0-1
Beeston, Eaton, Steed, Hamson, Unga	1-0
Beeston, Eaton, Steed, Seaborn, Unga	0-1
Beeston, Harry, Steed, Bailey, Unga*	1-0

\*Indicates most recent starting lineup

## BYU Capsule

With wins over in-state rivals Utah State and Utah, the Cougar women's basketball team improved its record to 5-4 on the season. BYU is set to play the next five games at home.

The Cougars host Tulsa (3-5) on Saturday, at 2 p.m.MST The game can be seen live on BYUtv and online at byutvsports.com.

On the season, BYU has outrebounded its opponents in five of the games played, including the last three. In all but two contests the Cougars have dished out more assists than their opponents. BYU has enjoyed a halftime lead in all but one game to date.

- Head coach: Jeff Judkins (Utah, '78), enters his 12th season
- Team's leading scorer: #5 Jennifer Hamson, 14.0 ppg\*
- Team's leading rebounder: #5 Hamson, 9.5 rpg
- Team's assist leader: #33 Haley Steed, 7.4 apg
- Team's steals leader: #33 Steed, 2.2 spg

\* Has only played in two games, rejoins the team now after the volleyball season concluded. Kim Parker Beeston and Morgan Bailey have played in all games and they average 10.4 ppg and 6.1 rpg

## TULSA Capsule

The Golden Hurricane enter the week with a 3-5 record and a three-game win streak with victories over Utah Valley, Nebraska Omaha and Colorado State. Three players are scoring in double digits to date. Tulsa returns seven letterwinners including three starters. Last season it compiled a 13-15 overall mark finishing sixth in Conference USA play with a 8-8 record.

- Head coach: Matilda Mossman is in her second year at Tulsa
- Team's leading scorer: #12 Taleya Mayberry, 20.1 ppg
- Team's leading rebounder: #31 Tiffani Couisnard, 10.4 rpg
- Team's assist leader: #12 Mayberry, 3.8 apg

### Series History

BYU leads the series 6-0

Head coach Jeff Judkins is 1-0 against Tulsa

### Last Meeting

These two teams played last season with BYU getting the road win 64-61. Haley Steed led all scorers with a career-high 24 points, three rebounds, three assists and one block.

Of the total 24 points, 18 were from 3-point range. Stephanie Rovetti came off the bench to pick up career highs as well with 12 points. She went 8-for-10 from the free throw line. Senior Kristen Riley picked up game highs in rebounds with 12.

The Cougars shot 40 percent from the field, 47 percent from behind the arc and 56 percent at the line.

BYU outrebounded the Golden Hurricane 41-38 and dished out more assists, 16-eight. It also recorded more blocks and steals with five and nine, respectively.

For Tulsa, Taylor Hooker led her team with 16 points, four rebounds, one block and three steals. Taleya Mayberry also put up double digits in points with 11 while tying for team highs in the rebound category with six.

The Golden Hurricane finished the game shooting 38 percent from the field, 36 percent from beyond the arc and 65 percent at the free throw line.

## USA TODAY/ESPN Top 25 Coaches Poll Dec. 11, 2012

Rank	School (Record)
1.	Stanford (8-0)
2.	Connecticut (8-0)
3.	Baylor (7-1)
4.	Duke (8-0)
5.	Notre Dame (6-1)
6.	Kentucky (8-1)
7.	Georgia (10-0)
8.	Louisville (9-1)
9.	Maryland (6-2)
10.	Penn State (7-2)
11.	California (7-1)
12.	Tennessee (6-1)
13.	Oklahoma (8-1)
14.	Purdue (9-1)
15.	Oklahoma State (7-0)
16.	Dayton (10-0)
17.	UCLA (7-1)
18.	South Carolina (10-0)
19.	Ohio State (6-2)
20.	Texas (5-1)
21.	Kansas (8-1)
22.	West Virginia (6-2)
23.	Miami, (Fla.) (7-1)
24.	Nebraska (7-3)
25.	Texas A&M (5-3)
25.	St. John's (4-2)

Receiving Votes: Gonzaga\*

\* Denotes BYU Opponent

### Poll Watching

Last year the Cougars began receiving votes in December and were ranked as high as No. 23 in February.

### 2012-13 NCAA Ranking Summary - (12/9/12)

Category - Team	Rank
Assist Turnover Ratio	28th
Category - Player	
Assists Per Game - H. Steed	3rd
Assist Turnover Ratio - H. Steed	24th

**BYU RECORDS**

**2012-13 BYU Records When...**

BYU leads at the half .....	5-3
Opponent leads at the half .....	0-1
Score is tied at the half .....	0-0
Games goes into overtime .....	0-1
BYU shoots 50% or better .....	0-0
Opponent shoots 50% or better .....	0-1
BYU makes five or more 3-pointers .....	4-2
Opponent makes five or more 3-pointers .....	2-3
BYU outrebounds opponent .....	3-2
Opponent outrebounds BYU .....	2-2
Rebounds are equal .....	0-0
BYU has 16 and under turnovers.....	4-3
Opponent has 16 and uner turnovers .....	2-3
BYU has 17-20 turnovers .....	1-0
Opponent has 17-20 turnovers.....	2-1
BYU has more than 20 turnovers.....	0-1
Opponent has more than 20 turnovers .....	1-0
BYU dishes out more assists .....	5-2
Opponent dishes out more assists.....	0-2
BYU has more blocks.....	4-2
Opponent has more blocks .....	0-2
BYU records more steals .....	2-2
Opponent records more steals .....	1-3
In November.....	3-4
In December.....	2-0
In January .....	0-0
In February .....	0-0
In March .....	0-0
In April .....	0-0
Last five games .....	3-2
Longest win streak .....	2-0
Playing on Monday .....	0-0
Playing on Tuesday .....	3-0
Playing on Wednesday .....	0-1
Playing on Thursday .....	0-1
Playing on Friday .....	1-1
Playing on Saturday.....	1-1
Facing ranked opponents.....	0-0
Facing unranked opponents .....	0-0

**2012-13 BYU TEAM HIGHS**

<b>POINTS</b>	<b>FG PERCENTAGE</b>
(81).....vs. Utah St. (12/4)	(.492).....vs. Weber St. (11/9)
<b>REBOUNDS</b>	<b>3-PT FG PERCENTAGE</b>
(48)..... vs. Creighton (11/28)	(.429).....vs. Utah St.(12/4)
<b>3-POINTERS</b>	<b>FT PERCENTAGE</b>
(13).....vs. Utah St. (12/4)	(.857).....at Arizona (11/20)
<b>ASSISTS</b>	
(25).....vs. Utah St. (12/4)	
<b>BLOCKS</b>	
(7).....vs.Weber St. (11/9)	
<b>STEALS</b>	
(12).....vs. Weber St. (11/9)	

**2012-13 BYU INDIVIDUAL HIGHS**

<b>POINTS</b>	
(24).....L. Eaton vs. Web. St. (11/9)	
(23).....J. Hamson at Arizona (11/20)	
(22), 1 more, last.....H. Steed at Utah (12/8)	
(19).....K. Beeston at Harvard (11/16)	
(19).....L. Eaton at Dartmouth (11/13)	
(18).....L. Eaton vs. Creighton (11/28)	
<b>REBOUNDS</b>	
(16).....A. Garfield vs. Utah St. (12/4)	
(14).....J. Hamson at Arizona (11/20)	
(10).....M. Bailey at Dartmouth (11/13)	
(9).....M. Bailey vs. Utah St. (12/4)	
(9).....L. Eaton vs. Creighton (11/28)	
(9).....K.Unga at Boston College (11/15)	
(8).....M. Bailey at Utah (12/8)	
(8).....K. Beeston at WashingtonSt. (11/24)	
(7).....M. Bailey vs. Web. St. (11/9)	
(7).....K. Beeston vs. Web.St. (11/9)	
(6).....S. Seaborn vs. Web.St. (11/9)	
(6).....H. Steed at Utah (12/8)	
<b>3-POINTERS</b>	
(6).....H. Steed vs. Utah St. (12/4)	
(5).....K. Beeston at Harvard (11/16)	
(3), 2 more, last .....	K. Beeston vs. Creighton (11/28)
(3), 1 more, last.....	H. Steed at Utah (12/9)
<b>ASSISTS</b>	
(12), 1 more, last.....	H. Steed vs. Utah St. (12/4)
(9).....	H. Steed vs. Web. St. (11/9)
(8), 1 more, last .....	H. Steed at AZ (11/20)
(6).....	H. Steed at Darmouth (11/13)
<b>BLOCKS</b>	
(5).....	J. Hamson at Arizona (11/20)
<b>STEALS</b>	
(4), 1 more, last.....	H. Steed at Arizona (11/20)
(4).....	K. Maeda vs. Web. St. (11/9)
(3).....	K. Beeston at Arizona (11/20)
(3).....	X. Harry vs. Creighton (11/28)
(3).....	K. Unga at Dartmouth (11/13)

**TRACKING RECORDS (as of 12/10/12)**

**CAREER**

**Assists**

1. Haley Steed - 626 (2006-present)
2. Valerie Cravens - 613 (1980-84)

**Steals**

- 1T. Valerie Cravens - 323 (1980-84)
- 1T. Kathy Denton - 323 (1981-1985)
3. Thais Kidd - 273 (1991-95)
4. Jackie Beene McBride - 240 (1979-82)
- 4T. Haley Steed - 240 (2006-present)

**3-pointers**

1. Erin Thorn - 391 (1999-03)
2. Mallary Gillespie Carling - 294 (2004-08)
3. Haley Steed - 207 (2006-present)

**Blocks**

1. Tresa Spaulding Hamson -4 94 (1983-87)
2. Debbie Dimond - 199 (1991-95)
3. Lori Vreeken - 138 (1980-84)
4. Jennifer Hamson - 127 (2010-present)

**1,000-Point Club**

2. Tresa Spaulding Hamson - 2,309 (1983-87)
17. Danielle Cheesman - 1,159 (2001-05)
18. Behka Stafford - 1,123 (1992-96)
19. Kimberly Talbot - 1,038 (1987-92)
20. Scarlett Overly - 1,022 (1987-89)
21. Haley Steed - 1,014 (2006-present)

**WEST COAST CONFERENCE INFO****Current WCC Standings - 12/11/12**

Place	Team	Conference	Overall
1.	Gonzaga	0-0	9-2
2.	San Diego	0-0	6-2
3.	Saint Mary's	0-0	6-2
4.	BYU	0-0	5-4
5.	San Francisco	0-0	5-4
6.	Loyola Marymount	0-0	5-5
7.	Santa Clara	0-0	4-4
8.	Pepperdine	0-0	2-5
9.	Portland	0-0	2-7

**2012-13 WCC Team Stats - 12/11/12**

Team Stats	All	Conf
Scoring Offense	6th	
Scoring Defense	4th	
Scoring Margin	4th	
Free Throw %	1st	
Field Goal %	5th	
Field Goal % Defense	4th	
3-Point FG %	4th	
3-Point FG % Defense	7th	
Rebounding Offense	5th	
Rebounding Defense	5th	
Rebounding Margin	5th	
Blocked Shots	6th	
Assists	3rd	
Steals	8th	
Turnover Margin	5th	
Assist/Turnover Ratio	1st	
Offensive Rebounds	8th	
Defensive Rebounds	4th	
Defensive Reb. %	1st	
Offensive Reb. %	8th	
3-Point FG Made	1st	

**2012-13 WCC Ind. Stats - 12/11/12**

Ind. Overall Stats	Player/Place
Scoring	Beeston/14th
	Steed/19th
	Bailey/24thT
Rebounding	Bailey/13th
Field Goal Percentage	Bailey/6th
Assists	Steed/1st
Steals	Steed/10th
3-Point Field Goal Percentage	Beeston/7th
	Steed/12thT
3-Point Field Goals Made	Beeston/2nd
	Steed/6th
Blocked Shots	Bailey/6thT
Assist/Turnover Ratio	Steed/2nd
Defensive Rebounds	Bailey/9th

**2012-13 WCC PRESEASON POLL****Preseason Coaches' Poll**

Place	Team	Points
1.	Brigham Young Univ. (5)	61
2.	Gonzaga (4)	60
3.	Saint Mary's	48
4.	Univ. of San Diego	36
5.	Pepperdine	33
6.	Santa Clara	27
7.	Loyola Marymount	25
8.	Portland	24
9.	San Francisco	10

**Preseason All-WCC Team**

Player (Yr.)	School	Pos.
Alex Cowling (Sr.)	LMU	G/F
Lexi Eaton (So.)	BYU	G
Megan Fulps (Sr.)	SCU	G
Jennifer Hamson (Jr.)	BYU	C
Amy Kame (Jr.)	SD	G
Taelor Karr (Sr.)	GON	G
Danielle Maulding (Jr.)	SMC	F
Jackie Nared (Jr.)	SMC	G
Haiden Palmer (Jr.)	GON	G
Haley Steed (Gr.)	BYU	G

## HEAD COACH JEFF JUDKINS

**Overall Record:** 236-119/11

**2012-13:** 5-4

**2011-12:** 26-7, 12-4/T2nd



### Career Achievements

- Six 20-plus win seasons – most wins (26) twice in 2005-06 and in 2011-12
- Five NCAA Tournament appearances - best finish, Sweet Sixteen 2001-02, most recent 2012 First Round
- Three WNIT postseason tournament appearances – best finish, Quarterfinal Round (Elite Eight) 2010-11
- Three conference coach of the year awards – 2010-11, 2006-07, 2005-06 - MWC
- Two conference regular season titles – MWC (2005-06 and 2006-07)
- Two conference tournament crowns – MWC (2001-02); WCC (2011-12)
- Coached three All-Americans – Erin Thorn, Ambrosia Anderson, Kristen Riley
- Coached three conference players of the year – Ambrosia Anderson, Dani Kubik Wright, Kristen Riley
- Coached one conference defensive player of the year –Mindy Bonham
- Coached two conference sixth player of the year – Coriann Fraughton, Kristen Riley
- Became BYU's women's basketball all-time winningest coach with his 220th career win when the Cougars defeated Pepperdine, 80-56 on Jan. 12, 2012

### Coaching Experience

- Assistant Coach (men) – University of Utah (1989-99)
- Assistant Coach (women)– BYU (2000-01)

### Playing Career

- NBA with Boston Celtics, Portland Trailblazers, Detroit Pistons, Utah Jazz – Drafted in the second round by the Boston Celtics in 1978, the same year the Celtics selected Larry Bird with the sixth pick overall
- University of Utah – 1974-78 leading Utah to one conference championship and two berths in the NCAA tournament
- While at Utah was a second team Academic All-American, a three-time District VII academic selection and a three-time First Team All-WAC honoree
- Member of the 1977 United States World Games team that captured the gold medal

### Education

University of Utah - Physical and Health Education bachelor's degree, 1978

### Personal

- Married to Mary Kay
- Has five children and four grandchildren

Judkins Coaching Record			
School	Yrs.	Rec.	Postseason
BYU	2001-02	24-9	NCAA Sweet 16
BYU	2002-03	19-12	NCAA 1st Round
BYU	2003-04	15-14	DNC
BYU	2004-05	19-11	WNIT 1st Round
BYU	2005-06	26-6	NCAA 2nd Round
BYU	2006-07	23-10	NCAA 1st Round
BYU	2007-08	13-16	DNC
BYU	2008-09	18-11	DNC
BYU	2009-10	23-10	WNIT Quarterfinals
BYU	2010-11	25-9	WNIT Third Round
BYU	2011-12	26-7	NCAA 1st Round
Record:		231-115 (.668)	

**2 — STEPHANIE ROVETTI**

5-6 • SOPHOMORE • GUARD • RENO, NEVADA (RENO HS)

**In 2012-13**

- Suffered season-ending cartilage injury to left knee in practice

**In 2011-12**

- Played in 31 of the 33 total games
- Averaged 7.5 minutes of playing time
- Posted season highs of 12 points, 6 rebounds, 4 assists and 4 steals
- Averaged 2.4 points per game
- Shot 45 percent from the field and 76 percent from the free throw line
- Recorded her first ever double figure game with 12 points at Tulsa on 11/14/11

**2011-12 SEASON HIGHS**

PTS	12, at Tulsa – 11/11/11
REB	6, at BYU-H – 11/29/11
AST	4, vs. SUU – 12/8/11
STL	4, vs. SUU – 12/8/11
BLK	—
FGM	4, at Seattle U – 1/25/12
FGA	4, three, last at Seattle U - 1/25/12
3PM	—
3PA	1, three, last vs. Portland – 1/21/12
FTM	8, twice, last vs. SUU – 12/8/11
FTA	10, at Tulsa – 11/11/11

**In 2010-11**

- Redshirt

**Personal**

- Parents are David and Diana
- Has one brother and three sisters
- Sister Morgan played on the BYU Rugby Team and the U-20 Women's National Rugby Team
- Majoring in dietetics

**CAREER HIGHS**

PTS	12, at Tulsa – 11/11/11
REB	6, at BYU-H – 11/29/11
AST	4, vs. SUU – 12/8/11
STL	4, vs. SUU – 12/8/11
BLK	—
FGM	4, at Seattle U – 1/25/12
FGA	4, three, last at Seattle U - 1/25/12
3PM	—
3PA	1, three, last vs. Portland – 1/21/12
FTM	8, twice, last vs. SUU – 12/8/11
FTA	10, at Tulsa – 11/11/11

**MISCELLANEOUS**

	11-12	Career
Double-Figure PTS	1	1
10-plus Pts	1	1
Double-Doubles	0	0
3-plus AST	4	4
3-plus STL	3	3
3-plus 3-point FG	0	0
Scoring Leader	0	0
Rebound Leader	0	0
Assist Leader	0	0

**ROVETTI CAREER STATISTICS (ALL GAMES)**

Year	GP	GS	Min	Avg	FG	FGA	Pct	3FG	FGA	Pct	FT	FTA	Pct	Off	Def	TR	Avg	PF	FO	A	TO	Blk	Stl	Pts	Avg
2011-12	31	0	233	7.5	17	38	.447	0	3	.000	41	54	.759	9	20	29	0.9	28	0	28	35	1	19	75	2.4
<b>TOTAL</b>	<b>31</b>	<b>0</b>	<b>233</b>	<b>7.5</b>	<b>17</b>	<b>38</b>	<b>.447</b>	<b>0</b>	<b>3</b>	<b>.000</b>	<b>41</b>	<b>54</b>	<b>.759</b>	<b>9</b>	<b>20</b>	<b>29</b>	<b>0.9</b>	<b>28</b>	<b>0</b>	<b>28</b>	<b>35</b>	<b>1</b>	<b>19</b>	<b>75</b>	<b>2.4</b>

**ROVETTI CAREER STATISTICS (CONFERENCE GAMES)**

Year	GP	GS	Min	Avg	FG	FGA	Pct	3FG	FGA	Pct	FT	FTA	Pct	Off	Def	TR	Avg	PF	FO	A	TO	Blk	Stl	Pts	Avg
2011-12	15	0	80	5.3	7	14	.500	0	1	.000	7	11	.636	2	4	6	0.4	13	0	8	11	1	4	21	1.4
<b>TOTAL</b>	<b>15</b>	<b>0</b>	<b>80</b>	<b>5.3</b>	<b>7</b>	<b>14</b>	<b>.500</b>	<b>0</b>	<b>1</b>	<b>.000</b>	<b>7</b>	<b>11</b>	<b>.636</b>	<b>2</b>	<b>4</b>	<b>6</b>	<b>0.4</b>	<b>13</b>	<b>0</b>	<b>8</b>	<b>11</b>	<b>1</b>	<b>4</b>	<b>21</b>	<b>1.4</b>

**3 — ASHLEY GARFIELD**

5-11 • SOPHOMORE • GUARD • MORGAN, UTAH (MORGAN HS)



**In 2012-13**

- Grabbed career highs in rebounds with 16 vs. Utah State and in points with 9 ... the boards were game highs
- Scored 8 points at Washington State while grabbing 3 rebounds, 2 assists and 1 steal in 19 minutes of playing time ... the assists were also season highs
- Started in her first college game at Harvard grabbing 4 rebounds, 2 points, 2 assists and 1 block
- Came off the bench for 4 minutes scoring 2 points at Boston College
- Grabbed a career high 5 rebounds in the home opener vs. Weber State
- Played 11 minutes while scoring 2 points vs. Weber St.

**In 2011-12**

- Played in 27 of the 33 total games
- Averaged 5.9 minutes of playing time
- Posted season highs of 8 points, 4 rebounds, 4 assists and 2 steals
- Averaged 2.0 points and 1.0 rebounds per game
- Shot 44 percent from the field, 45 percent from 3-point range and 73 percent from the free throw line
- Saw five minutes of action in her first collegiate game at Tulsa on 11/14/11

**Personal**

- Parents are Doug and Kathy
- Has one brother and one sisters
- Majoring in health education

**2012-13 SEASON HIGHS**

PTS	9, vs. Utah State – 12/4/12
REB	16, vs. Utah State – 12/4/12
AST	2, twice, last vs. Utah State – 12/4/12
STL	1, at Washington State – 11/24/12
BLK	–
FGM	2, twice, last at Wash. St. – 11/24/12
FGA	8, at Washington State – 11/24/12
3PM	–
3PA	1, vs. Weber St. – 11/9/12
FTM	7, vs. Utah State – 12/4/12
FTA	8, vs. Utah State – 12/4/12

**CAREER HIGHS**

PTS	9, vs. Utah State – 12/4/12
REB	16, vs. Utah State – 12/4/12
AST	4, vs. SUU – 12/8/11
STL	2, twice, last vs. St. Mary's – 2/4/12
BLK	1, three, last vs. Santa Clara – 2/23/12
FGM	3, twice, last vs. St. Mary's – 2/4/12
FGA	8, at Washington State – 11/24/12
3PM	1, four, last vs. San Diego – 3/3/12
3PA	1, nine, last vs. San Diego – 3/3/12
FTM	7, vs. Utah State – 12/4/12
FTA	8, vs. Utah State – 12/4/12

**MISCELLANEOUS**

	12-13	Career
Double-Figure PTS	0	0
10-plus Pts	0	0
Double-Doubles	0	0
3-plus AST	0	2
3-plus STL	0	3
3-plus 3-point FG	0	0
Scoring Leader	0	0
Rebound Leader	1	1
Assist Leader	0	0

**GARFIELD CAREER STATISTICS (ALL GAMES)**

Year	GP	GS	Min	Avg	FG	FGA	Pct	3FG	FGA	Pct	FT	FTA	Pct	Off	Def	TR	Avg	PF	FO	A	TO	Blk	Stl	Pts	Avg
2011-12	27	0	160	5.9	14	32	.438	4	9	.444	22	30	.733	9	18	27	1.0	9	0	18	12	3	7	54	2.0
2012-13	9	1	113	12.6	8	24	.333	0	2	.000	16	20	.800	13	29	42	4.7	10	0	9	10	1	3	32	3.6
<b>TOTAL</b>																									

**GARFIELD CAREER STATISTICS (CONFERENCE GAMES)**

Year	GP	GS	Min	Avg	FG	FGA	Pct	3FG	FGA	Pct	FT	FTA	Pct	Off	Def	TR	Avg	PF	FO	A	TO	Blk	Stl	Pts	Avg
2011-12	14	0	65	4.6	7	14	.500	1	3	.333	10	14	.714	1	8	9	0.6	4	0	5	3	2	3	25	1.8
2012-13																									
<b>TOTAL</b>	14	0	65	4.6	7	14	.500	1	3	.333	10	14	.714	1	8	9	0.6	4	0	5	3	2	3	25	1.8





**4 — KIM PARKER BEESTON**

5-10 • JUNIOR • GUARD • HEBER CITY, UTAH (WASATCH HS)

**In 2012-13**

- Scored 15 points vs. Utah State recording her 5th game putting up double digits in scoring this year ... also tied her season-best in assists with 5
- At Washington State led the team in rebounds with 8 for season and career bests in that category
- At Arizona had a season-best 3 steals
- Led all scorers with 19 points marking her third double figure game of the year at Harvard ... 15 of the points were from 3-point range ... the 5 made treys were season highs as were the points ... was also perfect from the free throw line going 4-for-4
- Recorded her first double figure game in points of the year with 13 vs. Weber State on 11/9/12
- Tied team highs in rebounds grabbing 7 vs. Weber State

**2012-13 SEASON HIGHS**

PTS	19, at Harvard – 11/16/12
REB	8, at Washington State – 11/24/12
AST	5, twice, last vs. Utah State – 12/4/12
STL	3, at Arizona – 11/20/12
BLK	1, vs. Weber State – 11/9/12
FGM	5, vs. Weber State – 11/9/12
FGA	11, vs. Weber State – 11/9/12
3PM	5, at Harvard – 11/16/12
3PA	7, twice, last at Harvard – 11/16/12
FTM	4, at Harvard – 11/16/12
FTA	4, at Harvard – 11/16/12

**In 2011-12**

- Started all games averaging 27.7 minutes of playing time
- Averaged 9.5 points and 3.1 rebounds per game
- Posted season highs of 25 points, 6 rebounds, 10 assists and 5 steals
- Ranked third on the team in scoring, second in assists and in steals and had team's best free throw percentage .846 (55-65)
- Shot 44 percent from the field, 45 percent from 3-point range and 73 percent from the free throw line
- Named to the WCC All-Academic team
- Garnered two WCC Player of the Week honors
- Recorded double figures in points in 17 games
- In the WCC ranked fourth in assists and in assist/turnover ratio, 15th in blocks and 24th in scoring
- Started her first collegiate game vs. No. 8 Duke on 11/11/11 leading the Cougar team with 14 points, 6 rebounds, 2 assists and 2 steals

**CAREER HIGHS**

PTS	25, vs. Arizona – 12/1/11
REB	8, at Washington State – 11/24/12
AST	10, vs. Gonzaga – 3/5/12
STL	5, vs. St. Mary's – 2/4/12
BLK	2, four, last vs. San Diego – 3/3/12
FGM	9, vs. Arizona – 12/1/11
FGA	16, vs. Portland – 1/21/12
3PM	4, vs. Arizona – 12/1/11
3PA	11, at Utah State – 12/17/11
FTM	6, at Santa Clara – 1/28/12
FTA	6, twice, last at Santa Clara – 1/28/12

**Personal**

- Parents are Lindsay and Vicki Parker
- Has three sisters and two brothers
- Husband is Spencer Beeston
- Majoring in school health education

**MISCELLANEOUS**

	12-13	Career
Double-Figure PTS	4	26
20-plus Pts	0	2
Double-Doubles	0	0
3-plus AST	0	30
3-plus STL	0	6
3-plus 3-point FG	2	9
Scoring Leader	1	6
Rebound Leader	1	1
Assist Leader	0	2

**BEESTON CAREER STATISTICS (ALL GAMES)**

Year	GP	GS	Min	Avg	FG	FGA	Pct	3FG	FGA	Pct	FT	FTA	Pct	Off	Def	TR	Avg	PF	FO	A	TO	Blk	Stl	Pts	Avg
2009-10	8	0	102	12.8	8	19	.421	4	11	.364	4	7	.571	7	11	18	2.3	11	0	5	10	1	5	24	3.0
2010-11	33	0	508	15.4	54	131	.412	31	79	.392	26	31	.839	44	39	83	2.5	59	1	49	35	4	24	165	5.0
2011-12	33	33	915	27.7	108	290	.372	43	152	.283	55	65	.846	33	68	101	3.1	56	1	109	62	16	44	314	9.5
2012-13	9	9	300	33.3	31	78	.397	22	58	.379	10	14	.714	6	35	41	4.6	21	0	18	26	3	8	94	10.4
<b>TOTAL</b>																									

**BEESTON CAREER STATISTICS (CONFERENCE GAMES)**

Year	GP	GS	Min	Avg	FG	FGA	Pct	3FG	FGA	Pct	FT	FTA	Pct	Off	Def	TR	Avg	PF	FO	A	TO	Blk	Stl	Pts	Avg
2009-10	0	0	0	0	0	0	0	0	0	0	0	0	0	0	0	0	0	0	0	0	0	0	0	0	0
2010-11	16	0	241	15.1	27	55	.491	16	35	.457	10	11	.909	15	15	30	1.9	27	0	17	14	2	6	80	5.0
2011-12	16	16	452	28.3	39	138	.283	16	76	.211	31	33	.939	10	38	48	3.0	23	0	49	34	5	23	125	7.8
2012-13																									
<b>TOTAL</b>	32	16	693	21.7	66	193	.342	32	111	.288	41	44	.932	25	53	78	2.4	50	0	66	48	7	29	205	6.4

5 — JENNIFER HAMSON

6-7 • JUNIOR • CENTER • LINDON, UTAH (PLEASANT GROVE HS)



In 2012-13

- Played in the road game at Utah grabbing 5 rebounds, scoring 5 points and getting 1 assist, 1 block and 1 steal
- Started in her first game of the season at Arizona recording career bests in points with 23 and in rebounds with 14 while picking up her 4th double double in her career
- Had 5 blocks for season bests in that category, the blocks propelled her to 4th place all-time in blocks with 126 in the road game against the Wildcats

In 2011-12

- Played in 31 of the 33 total games averaging 17.8 minutes of playing time
- Averaged 9.5 points and 5.7 rebounds per game
- Posted season highs of 21 points, 11 rebounds and 6 blocks
- Ranked third on the team in scoring, second in rebounds and first in blocks
- Had the team's best field goal percentage .579 (114-197)
- Recorded three double doubles on the year and 14 games tallying double digits in points
- Named to the WCC All-Academic team
- Named to the 2012 WCC All-Tournament Team
- In the WCC ranked first in free throw percentage and in blocks, placed 12th in rebounding, 13th in free throw percentage, offensive rebounds and defensive rebounds, ranked 23rd in scoring
- Is a dual sport student-athlete also competing on the women's volleyball team

Personal

- Parents are David and Tresa
- Has two brothers and two sisters
- Mother is the former BYU All-American Tresa Spaulding, who holds numerous school records in basketball
- Majoring in exercise science

2012-13 SEASON HIGHS

PTS	23, at Arizona – 11/20/12
REB	14, at Arizona – 11/20/12
AST	–
STL	1, at Arizona – 11/20/12
BLK	5, at Arizona – 11/20/12
FGM	9, at Arizona – 11/20/12
FGA	17, at Arizona – 11/20/12
3PM	–
3PA	–
FTM	5, at Arizona – 11/20/12
FTA	6, at Arizona – 11/20/12

CAREER HIGHS

PTS	23, at Arizona – 11/20/12
REB	14, at Arizona – 11/20/12
AST	2, twice, last vs. Portland – 1/21/12
STL	2, twice, last at San Diego – 1/14/12
BLK	9, at UNLV – 2/5/11
FGM	9, twice, last at Arizona – 11/20/12
FGA	14, vs. Air Force – 2/9/11
3PM	–
3PA	1, at Portland – 1/2/12
FTM	9, vs. Eastern Washington – 11/26/11
FTA	11, vs. Eastern Washington – 11/26/11

MISCELLANEOUS

	12-13	Career
Double-Figure PTS	1	25
20-plus Pts	1	1
Double-Doubles	1	4
3-plus AST	0	0
3-plus STL	0	0
3-plus 3-point FG	0	0
Scoring Leader	3	4
Rebound Leader	3	7
Assist Leader	0	0

HAMSON CAREER STATISTICS (ALL GAMES)

Year	GP	GS	Min	Avg	FG	FGA	Pct	3FG	FGA	Pct	FT	FTA	Pct	Off	Def	TR	Avg	PF	FO	A	TO	Blk	Stl	Pts	Avg
2010-11	30	20	455	15.2	90	161	.559	0	0	.000	51	69	.739	58	96	154	5.1	51	1	4	27	45	7	231	7.7
2011-12	31	0	553	17.8	114	197	.579	0	1	.000	67	89	.753	63	115	178	5.7	52	1	17	31	76	17	295	9.5
2012-13	2	1	48	24.0	11	21	.524	0	0	.000	6	8	.750	5	14	19	9.5	6	0	1	3	6	2	28	14.0
<b>TOTAL</b>																									

HAMSON CAREER STATISTICS (CONFERENCE GAMES)

Year	GP	GS	Min	Avg	FG	FGA	Pct	3FG	FGA	Pct	FT	FTA	Pct	Off	Def	TR	Avg	PF	FO	A	TO	Blk	Stl	Pts	Avg
2010-11	16	16	271	16.9	56	97	.577	0	0	.000	27	36	.750	36	52	88	5.5	31	0	2	19	31	4	139	8.7
2011-12	16	0	289	18.1	61	108	.565	0	1	.000	36	49	.735	36	59	95	5.9	27	1	8	14	40	9	158	9.9
<b>TOTAL</b>	32	16	560	17.5	117	205	.571	0	1	.000	63	85	.742	1	8	9	0.6	58	1	10	33	71	13	297	9.3



**11 — XOJIAN HARRY**

5-11 • SOPHOMORE • GUARD • BOUNTIFUL, UTAH (WOODS CROSS HS)

**In 2012-13**

- Started in her first college game at Utah where she contributed 3 points, grabbed 3 rebounds and had 1 block playing 26 minutes
- In the game vs. Utah State scored 9 points for season bests to date and tie for career highs
- Had 3 steals in game vs. Creighton for season highs in that category, the steals tie for career highs
- Played 21 minutes at Washington State tallying 5 points and 2 rebounds
- In 16 minutes of playing time grabbed 3 rebounds and had 1 steal at Boston College, 11/15/12
- Played 16 minutes in the first game of the year vs. Weber State scoring 6 points, 1 assist and 1 block

**In 2011-12**

- Played in 32 of the 33 total games
- Averaged 7.8 minutes of playing time
- Shot 40 percent from the field, 27 percent from 3-point range and 43 percent at the free throw line
- Averaged 2.3 points and 0.6 rebounds per game
- Posted season highs of 9 points, 3 rebounds, 2 3-pointers, 2 assists and 3 steals
- Played in her first ever collegiate game vs. No. 8 Duke on 11/11/11 recording 8 points and dishing out 1 assists in 11 minutes of action

**Personal**

- Parents are Carl and Susan
- Has three brothers and one sister
- Majoring in exercise science

**2012-13 SEASON HIGHS**

PTS	9, vs. Utah State – 12/5/12
REB	3, at Boston College – 11/15/12
AST	1, three, last vs. Creighton – 11/28/12
STL	3, vs. Creighton – 11/28/12
BLK	1, vs. Weber State – 11/9/12
FGM	3, twice, last vs. Utah State – 12/4/12
FGA	7, vs. Utah State – 12/4/12
3PM	2, vs. Utah State – 12/4/12
3PA	2, vs. Utah State – 12/4/12
FTM	2, vs. Utah State – 12/4/12
FTA	2, vs. Utah State – 12/4/12

**CAREER HIGHS**

PTS	9, twice, last vs. Utah State – 12/4/12
REB	3, twice, last at BC – 11/15/12
AST	1, eight, last vs. Creighton – 11/28/12
STL	3, twice, last vs. Creighton – 11/28/12
BLK	2, vs. Portland – 1/21/12
FGM	4, twice, last at BYU-Hawaii – 11/29/11
FGA	9, at BYU-Hawaii – 11/29/11
3PM	2, twice, last at Portland – 1/2/12
3PA	4, vs. Duke – 11/11/11
FTM	2, twice, last vs. Utah State – 12/4/12
FTA	4, vs. Portland – 1/21/12

**MISCELLANEOUS**

	12-13	Career
Double-Figure PTS	0	0
10-plus Pts	0	0
Double-Doubles	0	0
3-plus AST	0	0
3-plus STL	3	3
3-plus 3-point FG	0	0
Scoring Leader	0	0
Rebound Leader	0	0
Assist Leader	0	0

**HARRY CAREER STATISTICS (ALL GAMES)**

Year	GP	GS	Min	Avg	FG	FGA	Pct	3FG	FGA	Pct	FT	FTA	Pct	Off	Def	TR	Avg	PF	FO	A	TO	Blk	Stl	Pts	Avg
2011-12	32	0	251	7.8	31	78	.397	10	37	.270	3	7	.429	5	14	19	0.6	21	0	6	14	3	14	75	2.3
2012-13	9	1	144	16.0	13	33	.394	4	12	.333	2	5	.400	2	9	11	1.2	15	0	4	9	3	5	32	3.6
<b>TOTAL</b>																									

**HARRY CAREER STATISTICS (CONFERENCE GAMES)**

Year	GP	GS	Min	Avg	FG	FGA	Pct	3FG	FGA	Pct	FT	FTA	Pct	Off	Def	TR	Avg	PF	FO	A	TO	Blk	Stl	Pts	Avg
2011-12	16	0	126	7.9	12	27	.444	6	14	.429	2	4	.500	1	8	9	0.6	10	0	4	9	2	6	32	2.0
2012-13																									
<b>TOTAL</b>	16	0	126	7.9	12	27	.444	6	14	.429	2	4	.500	1	8	9	0.6	10	0	4	9	2	6	32	2.0

**12 — STEPHANIE VERMUNT SEABORN** 6-0 • JUNIOR • GUARD • AIRDRIE, ALB. (BERT CHURCH HS)



**In 2012-13**

- Recorded her first double figure game in points with a season-high 12 in the game at Utah after leading all scorers in the first half with 9 ... was perfect from the charity stripe going 4-for-4 ... grabbed 4 rebounds and dished out 1 assist
- Started her first game at Washington State grabbing 3 rebounds and 2 assists
- Tallied 8 points, 6 rebounds, 1 assist and 1 steal at Boston College, 11/15/12
- Came off the bench playing 10 minutes at Dartmouth while grabbing 4 rebounds and 1 steal
- Played 20 minutes in the first game of the year vs. Weber State on 11/9/12 grabbing 6 rebounds

**In 2011-12**

- Played in all 33 games
- Averaged nearly 17 minutes of playing time
- Had the team's best 3-point shooting percentage .467 (49-105)
- Tallied the second most 3-pointers made with 49
- Averaged 6.5 points, 2.2 rebounds and 1.1 assists per game
- In the WCC ranked first in 3-point field goal percentage and 11th in 3-point field goals made
- Posted season highs of 14 points, 6 rebounds, 4 3-pointers, 4 assists and 3 steals
- Recorded six games putting up double figures in points

**Personal**

- Parents are Carl and Sue Vermunt
- Has four sisters and three brother-in-laws
- Husband is Travis Seaborn
- Majoring in family studies

**2012-13 SEASON HIGHS**

PTS	12, at Utah – 12/8/12
REB	6, twice, last, at BC – 11/15/12
AST	1, twice, last, at Utah – 12/8/12
STL	2, vs. Weber State – 11/9/12
BLK	–
FGM	3, twice, last, at Utah – 12/8/12
FGA	7, at Utah – 12/8/12
3PM	2, at Utah – 12/8/12
3PA	5, at Utah – 12/8/12
FTM	4, at Utah – 12/8/12
FTA	4, at Utah – 12/8/12

**CAREER HIGHS**

PTS	17, vs. Washington – 11/20/10
REB	7, vs. Utah State – 11/23/10
AST	4, twice, last at San Diego – 1/14/12
STL	3, at Weber State – 11/19/11
BLK	2, twice, last vs. San Fran. – 2/16/12
FGM	6, vs. Utah State – 11/23/10
FGA	13, vs. Utah State – 11/23/10
3PM	4, five, last vs. Utah State – 11/23/10
3PA	6, three, last vs. DePaul – 3/17/12
FTM	4, at Utah – 12/8/12
FTA	4, twice, last, at Utah – 12/8/12

**MISCELLANEOUS**

	12-13	Career
Double-Figure PTS	1	10
10-plus Pts	1	10
Double-Doubles	0	0
3-plus AST	0	0
3-plus STL	0	1
3-plus 3-point FG	0	7
Scoring Leader	0	1
Rebound Leader	0	0
Assist Leader	0	0

**SEABORN CAREER STATISTICS (ALL GAMES)**

Year	GP	GS	Min	Avg	FG	FGA	Pct	3FG	FGA	Pct	FT	FTA	Pct	Off	Def	TR	Avg	PF	FO	A	TO	Blk	Stl	Pts	Avg	
2009-10	0	0	0	0	0	0	0	0	0	0	0	0	0	0	0	0	0	0	0	0	0	0	0	0	0	
2010-11	29	0	301	10.4	35	118	.297	18	68	.265	12	22	.545	18	25	43	1.5	29	0	11	21	4	11	100	3.4	
2011-12	33	0	554	16.8	79	182	.434	49	105	.467	7	12	.583	17	56	73	2.2	38	0	36	29	9	13	214	6.5	
2012-13	9	1	156	17.3	10	38	.263	7	33	.212	8	8	1.00	8	20	28	3.1	13	0	8	9	1	4	35	3.9	
<b>TOTAL</b>																										

**SEABORN CAREER STATISTICS (CONFERENCE GAMES)**

Year	GP	GS	Min	Avg	FG	FGA	Pct	3FG	FGA	Pct	FT	FTA	Pct	Off	Def	TR	Avg	PF	FO	A	TO	Blk	Stl	Pts	Avg	
2009-10	0	0	0	0	0	0	0	0	0	0	0	0	0	0	0	0	0	0	0	0	0	0	0	0	0	
2010-11	12	0	81	6.8	8	26	.308	5	16	.313	5	9	.556	4	3	7	0.6	11	0	1	9	2	2	26	2.2	
2011-12	16	0	268	16.8	31	90	.344	22	60	.367	2	4	.500	8	28	36	2.3	16	0	17	13	6	4	86	5.4	
2012-13																										
<b>TOTAL</b>	28	0	349	11.8	39	116	.336	27	76	.356	7	13	.538	12	31	43	1.5	27	0	18	22	8	6	112	4.0	



21 — LEXI EATON

5-10 • SOPHOMORE • GUARD • MAPLETON, UTAH (SPRINGVILLE HS)



In 2012-13

- Suffered season-ending ACL injury to right knee during the home game vs. Utah State
- Had team highs in points and in rebounds with 18 and 9 respectively vs. Creighton, the points mark the 7th time on the year that she's finished the game in double figure points, the rebounds were season and career bests
- Led the team in points with 13 at Washington State marking her 6th straight double figure outing in points
- Finished the game at Arizona with 12 points for her 5th straight double figure contest while going 6-for-6 from the free throw line
- Led all scorers with 17 points at Boston College while grabbing 5 boards and 3 assists
- Recorded second straight double figure outing in points at Dartmouth with 19 leading all scorers
- In the game at Dartmouth shot .833, 5-6 from the charity stripe
- Led all scorers with 24 points in the home opener vs. Weber State while dishing out 4 assists and getting 1 block

2012-13 SEASON HIGHS

PTS	24, vs. Weber State – 11/9/12
REB	9, vs. Creighton at ESA – 11/28/12
AST	4, vs. Weber State – 11/9/12
STL	1, at Arizona – 11/20/12
BLK	1, vs. Weber State – 11/9/12
FGM	9, vs. Weber State – 11/9/12
FGA	17, at Washington State – 11/24/12
3PM	2, at Dartmouth – 11/13/12
3PA	4, at Dartmouth – 11/13/12
FTM	6, twice, last vs. Creighton – 11/28/12
FTA	8, twice, last vs. Creighton – 11/28/12

CAREER HIGHS

PTS	26, vs. San Diego – 3/3/12
REB	9, vs. Creighton – 11/28/12
AST	5, vs. Portland – 1/21/12
STL	4 vs. Nevada – 12/22/11
BLK	2, three, last at San Diego – 1/14/12
FGM	10, vs. San Diego – 3/3/12
FGA	20, vs. Duke – 11/11/11
3PM	3, twice, last vs. San Diego – 3/3/12
3PA	5, vs. San Diego – 3/3/12
FTM	6, three, last vs. Creighton – 11/28/12
FTA	8, twice, last vs. Creighton – 11/28/12

MISCELLANEOUS

	12-13	Career
Double-Figure PTS	7	27
20-plus Pts	1	2
Double-Doubles	0	0
3-plus AST	3	12
3-plus STL	0	4
3-plus 3-point FG	0	2
Scoring Leader	4	9
Rebound Leader	1	1
Assist Leader	0	0

In 2011-12

- Started in all 33 games as a freshman
- Team's second leading scorer averaging 10.5 points per game
- Ranked fourth in field goal percentage .458 (131-286)
- Scored in double digits in 20 games
- Named WCC Co-Newcomer of the Year and made the WCC All-Freshman Team
- Was named the Female Rookie of the Year by the Cougar Club
- In the WCC ranked seventh in field goal percentage and 18th in scoring
- Posted season highs of 26 points, 8 rebounds, 2 3-pointers, 5 assists, 4 steals and 2 blocks
- The 26 points vs. San Diego in the WCC Championships were the most scored by any BYU player on the year
- Is a dual-sport student-athlete competing as a high jumper on the women's track and field team

Personal

- Parents are Alan and Aleisa
- Has six siblings
- Majoring in psychology

EATON CAREER STATISTICS (ALL GAMES)

Year	GP	GS	Min	Avg	FG	FGA	Pct	3FG	FGA	Pct	FT	FTA	Pct	Off	Def	TR	Avg	PF	FO	A	TO	Blk	Stl	Pts	Avg
2011-12	33	33	752	22.8	131	286	.458	21	60	.350	63	82	.768	49	52	101	3.1	67	1	60	95	13	39	346	10.5
2012-13	8	8	225	28.1	45	98	.459	5	15	.333	30	44	.682	16	16	32	4.0	19	0	13	16	3	4	125	15.6
<b>TOTAL</b>																									

EATON CAREER STATISTICS (CONFERENCE GAMES)

Year	GP	GS	Min	Avg	FG	FGA	Pct	3FG	FGA	Pct	FT	FTA	Pct	Off	Def	TR	Avg	PF	FO	A	TO	Blk	Stl	Pts	Avg
2011-12	16	16	371	23.2	65	139	.468	14	36	.389	32	44	.727	26	23	49	3.1	37	0	27	51	10	13	176	11.0
2012-13																									
<b>TOTAL</b>	16	16	371	23.2	65	139	.468	14	36	.389	32	44	.727	26	23	49	3.1	37	0	27	51	10	13	176	11.0



**33 — HALEY STEED**

5-4 • GRAD. STUDENT • GUARD • SYRACUSE, UTAH (CLEARFIELD HS)

**In 2012-13**

- On Tuesday, Dec. 11 was honored as the WCC Player of the Week, ESPN Women's Basketball Player of the Week and named High Major Conference Player of the Week by CollegeSportsMadness.com
- Led all scorers with 22 points in the road game at Utah ... the points tied for season bests and mark the 3rd time this year she's put up double digits in points ... with the 22 points she becomes BYU's 23rd player to reach BYU's exclusive 1,000-point Club
- Tied her season high in assists with 12 vs. Utah State, making her BYU's all-time assist leader with 623 ... led all scorers with 22 points, 18 of them were from 3-point range ... the 6 treys were the most made on the year and tie for career highs ... was perfect at the free throw line going 4-4 ... the points and assists give her the first double-double of the year and the 4th of her career
- In the game vs. Creighton at EnergySolutions Arena recorded season bests in rebounds and in assists with 8 and 12 respectively ... the assists were game highs
- At Washington State had 4 assists and 3 steals, the most on the team in both
- Picked up first double figure game in points with 11 at Boston College while dishing out a game-high 5 assists, 3 steals and a season-best 3 rebounds
- For the second straight game, led all players in assists with 6 at Dartmouth
- Dished out a game-high 9 assists in the home opener vs. Weber State ... put in two 3-pointers vs. Weber State

**2012-13 SEASON HIGHS**

PTS	22, twice, last, at Utah – 12/8/12
REB	12, vs. Creighton at ESA – 11/28/12
AST	12, twice, last vs. Utah St. – 12/4/12
STL	4, at Arizona – 11/20/12
BLK	1, vs. Weber State – 11/9/12
FGM	7, at Utah – 12/8/12
FGA	15, at Utah – 12/8/12
3PM	6, vs. Utah State – 12/4/12
3PA	12, vs. Utah State – 12/4/12
FTM	5, at Utah – 12/8/12
FTA	6, at Utah – 12/8/12

**CAREER HIGHS**

PTS	24, twice, last at Tulsa – 11/24/11
REB	15, vs. Duke – 11/11/11
AST	14, vs. Pepperdine – 1/12/12
STL	7 at Arizona State – 3/23/10
BLK	2, four, last vs. SUU – 12/8/11
FGM	9, at Utah – 1/30/10
FGA	17, at Tulsa – 11/24/11
3PM	6, four, last vs. Utah State – 12/4/12
3PA	12, twice, last vs. Utah St. – 12/4/12
FTM	6, at Portland State – 11/14/08
FTA	6, three, last at Utah – 12/8/12

**MISCELLANEOUS**

	12-13	Career
Double-Figure PTS	3	44
20-plus Pts	2	5
Double-Doubles	1	4
3-plus AST	7	96
3-plus STL	3	37
3-plus 3-point FG	3	22
Scoring Leader	2	14
Rebound Leader	0	7
Assist Leader	9	57

**In 2011-12**

- Finished the year ranked third nationally in assist turnover ratio and fourth in assists per game
- Was a finalist for the Nancy Lieberman Award given to the best female college point guard in the nation
- Made the most 3-pointers on the team with 57
- Ranked second in defensive rebounds with 135 for a 4.1 average
- Played the most minutes on the team averaging 34.1 per game
- Led the team in total assists and steals with 237 and 72 respectively
- Finished ranked eighth all-time in steals with 220
- Finished ranked fourth in career 3-pointers made with 190
- Concluded the season ranked second all-time in career assists with 559, while holding the all-time single season record for assists with 237
- Tallied 13 games where she scored in double figures
- Recorded two double doubles on the season
- Named the 2012 WCC Champs MVP
- Was named to the WCC All-Conference Team
- Name team co-captain, third straight such selection

**Personal**

- Parents are Dorne and Kristen Hall

**STEED CAREER STATISTICS (ALL GAMES)**

Year	GP	GS	Min	Avg	FG	FGA	Pct	3FG	FGA	Pct	FT	FTA	Pct	Off	Def	TR	Avg	PF	FO	A	TO	Blk	Stl	Pts	Avg	
2006-07	8	0	173	21.6	15	40	.375	9	20	.450	5	8	.625	4	9	13	1.6	19	0	17	19	1	6	44	5.5	
2008-09	1	1	31	31.0	2	9	.222	1	3	.333	6	6	1.000	1	2	3	3.0	1	0	4	5	0	4	11	11.0	
2009-10	33	33	1117	33.8	112	297	.377	58	162	.358	20	28	.714	30	86	116	3.5	77	0	133	73	5	76	296	8.9	
2010-11	34	34	1134	33.4	102	301	.339	65	199	.327	22	28	.786	16	96	112	3.3	72	0	168	64	11	62	289	8.3	
2011-12	33	33	1126	34.1	96	282	.340	57	170	.335	43	55	.782	23	135	158	4.8	63	1	237	89	6	72	292	8.6	
2012-13	9	9	324	36.0	26	90	.289	17	53	.321	13	15	.867	5	30	35	3.9	20	0	67	28	3	20	82	9.1	
<b>TOTAL</b>																										

**STEED CAREER STATISTICS (CONFERENCE GAMES)**

Year	GP	GS	Min	Avg	FG	FGA	Pct	3FG	FGA	Pct	FT	FTA	Pct	Off	Def	TR	Avg	PF	FO	A	TO	Blk	Stl	Pts	Avg
2006-07	0	0	0	0	0	0	0	0	0	0	0	0	0	0	0	0	0	0	0	0	0	0	0	0	0
2008-09	0	0	0	0	0	0	0	0	0	0	0	0	0	0	0	0	0	0	0	0	0	0	0	0	0
2009-10	16	16	548	34.2	56	151	.371	29	81	.358	9	12	.750	18	51	69	4.3	39	1	65	35	5	35	150	9.4
2010-11	16	16	528	33.0	51	141	.362	33	94	.351	12	14	.857	8	45	53	3.3	33	0	80	25	7	25	147	9.2
2011-12	16	16	568	35.5	49	138	.355	31	82	.378	19	23	.826	5	61	66	4.1	29	1	124	47	3	36	148	9.3
2012-13																									
<b>TOTAL</b>	48	48	1644	34.2	156	430	.363	93	257	.362	40	49	.816	31	157	188	3.9	101	2	269	107	15	96	445	9.3



**41 — MORGAN BAILEY**

6-2 • SOPHOMORE • FORWARD • OREM, UTAH (TIMPANOGOS HS)

**In 2012-13**

- Grabbed a team-best 8 rebounds in the road game at Utah
- Picked up her 4th double figure game in points of the year with 12 vs. Utah State while grabbing 9 rebounds and shooting .500 (5-10) from the field ... the points tied for season and career bests
- In the game at Washington State scored 12 points marking her third double digit outing in points which also tied for season and career highs and got 2 blocks
- Had 2 blocks in the game at Washington State tying her season and career bests in that category
- Saw 14 minutes of action tallying 6 points, 4 rebounds and 1 block in the road game at Arizona
- Recorded her first career double double with 12 points and 10 rebounds at Dartmouth ... the boards were game highs ... the points and rebounds were both season and career highs
- Started in her first college game vs. Weber State tallying 11 points, 7 rebounds while getting career highs in assists with 3 and in steals with 3

**2012-13 SEASON HIGHS**

PTS	12, three, last vs. Utah St. – 12/4/12
REB	10, at Dartmouth – 11/13/12
AST	3, vs. Weber State – 11/9/12
STL	3, vs. Weber State – 11/9/12
BLK	2, twice, last at Wash. St. – 11/24/12
FGM	6, at Dartmouth – 11/13/12
FGA	12, at Dartmouth – 11/13/12
3PM	–
3PA	–
FTM	2, twice, last vs. Utah State – 12/4/12
FTA	2, four, last vs. Utah State – 12/4/12

**In 2011-12**

- Saw action in a total of 25 games
- Averaged 5.5 minutes of playing time
- Played in her first collegiate game at Tulsa where she tallied 5 points, 4 rebounds and 2 blocks in 11 minutes of action
- Averaged 1.8 points and 1.4 rebounds in all games
- Saw action in 13 WCC games on the year averaging 1.2 points and 1.0 rebounds per contest
- Picked up season highs with 7 points, 4 rebounds, 1 assist, 2 blocks and 2 steals

**In 2010-11**

- Redshirt

**Personal**

- Parents are Roxanne Bailey and Carl Bailey
- Has one brother and one sister
- Born in Alexandria, Virginia
- Uncle is Thurl Bailey

**CAREER HIGHS**

PTS	12, three, last vs. Utah St. – 12/4/12
REB	10, at Dartmouth – 11/13/12
AST	3, vs. Weber State – 11/9/12
STL	3, vs. Weber State – 11/9/12
BLK	2, four, last at Wash. St. – 11/24/12
FGM	6, at Dartmouth – 11/13/12
FGA	12, at Dartmouth – 11/13/12
3PM	1, twice, last vs. Portland – 1/21/12
3PA	1, ten, last vs. Santa Clara – 2/23/12
FTM	3, at BYU-H – 11/29/11
FTA	4, at BYU-H – 11/29/11

**MISCELLANEOUS**

	12-13	Career
Double-Figure PTS	3	3
10-plus Pts	3	3
Double-Doubles	1	1
3-plus AST	1	1
3-plus STL	1	1
3-plus 3-point FG	0	0
Scoring Leader	0	0
Rebound Leader	2	2
Assist Leader	0	0

**BAILEY CAREER STATISTICS (ALL GAMES)**

Year	GP	GS	Min	Avg	FG	FGA	Pct	3FG	FGA	Pct	FT	FTA	Pct	Off	Def	TR	Avg	PF	FO	A	TO	Blk	Stl	Pts	Avg
2011-12	25	0	137	5.5	17	50	.340	2	10	.200	8	14	.571	17	19	36	1.4	13	0	5	16	4	5	44	1.8
2012-13	9	6	201	22.3	34	69	.493	0	1	.000	7	10	.700	12	43	55	6.1	15	0	6	14	9	7	75	8.3
<b>TOTAL</b>																									

**BAILEY CAREER STATISTICS (CONFERENCE GAMES)**

Year	GP	GS	Min	Avg	FG	FGA	Pct	3FG	FGA	Pct	FT	FTA	Pct	Off	Def	TR	Avg	PF	FO	A	TO	Blk	Stl	Pts	Avg
2011-12	13	0	51	3.9	7	21	.333	1	4	.250	1	2	.500	7	6	13	1.0	4	0	3	7	2	3	16	1.2
2012-13																									
<b>TOTAL</b>	13	0	51	3.9	7	21	.333	1	4	.250	1	2	.500	7	6	13	1.0	4	0	3	7	2	3	16	1.2





**45 — KEILANI UNGA**

6-2 • SENIOR • FORWARD • WARRENVILLE, IL (WEATON WARRENVILLE HS)

**In 2012-13**

- Scored 11 points vs. Creighton for her second double figure game of the year and the 13th overall
- Picked up season highs in points with 14 to go along with 4 rebounds, 1 assist and 1 steal at Harvard, the points are the first double digit outing in points on the year and the 12th of her career
- Led the team in rebounds with 9 at Boston College for season and career highs in that category
- Tallied 9 points and season highs in rebounds with 5 and in steals with 3 at Dartmouth
- Shot .833, 5-6 from the free throw line at Dartmouth
- Started in the first game of the year vs. Weber State putting up 9 points

**From 2007-2010**

- Has started in 67 of 91 total games in three previous seasons
- Enters her final year averaging 4.4 points and 2.6 rebounds per game
- During her junior season finished ranked fifth in assists with 36
- Has recorded double digit scoring in 11 games
- In her sophomore season had the most blocks on the team with 19 and ranked third in field goal percentage .406 (63-155)
- As a freshman she averaged 20 minutes of playing time
- In her junior season she started in all games averaging 17.3 minutes of playing time
- Career highs include 19 points, 8 rebounds, 3 assists, 3 blocks and 3 steals
- Picked up season highs with 7 points, 4 rebounds, 1 assist, 2 blocks and 2 steals

**Personal**

- Parents are Sione and Lose Moeaki
- Has three brothers and two sisters
- Husband's name is Harvey Unga, played football at BYU from 2006 to 2010 as a running back
- They have two children, Jackson (2) and Lei La (1)
- Born in Winfield, Illinois
- Majoring in public health

**2012-13 SEASON HIGHS**

PTS	14, at Harvard – 11/16/12
REB	9, at Boston College – 11/15/12
AST	2, vs. Weber State – 11/9/12
STL	3, at Dartmouth – 11/13/12
BLK	1, vs. Weber State – 11/9/12
FGM	5, vs. Creighton at ESA – 11/28/12
FGA	11, twice, last vs. Creighton –11/28/12
3PM	–
3PA	–
FTM	5, at Dartmouth – 11/13/12
FTA	6, at Dartmouth – 11/13/12

**CAREER HIGHS**

PTS	19, vs. Hartford – 11/20/07
REB	9, at Boston College – 11/15/12
AST	3, six, last at Cal – 3/27/10
STL	3, six, last at Dartmouth – 11/13/12
BLK	3, vs. Wyoming – 2/20/10
FGM	6, three, last vs. UVU – 11/13/09
FGA	11, twice, last vs. Creighton –11/28/12
3PM	1, twelve, last vs. CSU – 2/17/10
3PA	3, vs. CSU – 2/17/10
FTM	7, vs. Hartford – 11/20/07
FTA	10, vs. Hartford – 11/20/07

**MISCELLANEOUS**

	12-13	Career
Double-Figure PTS	2	13
10-plus Pts	2	13
Double-Doubles	0	0
3-plus AST	0	6
3-plus STL	1	3
3-plus 3-point FG	0	0
Scoring Leader	0	2
Rebound Leader	1	2
Assist Leader	0	1

**UNGA CAREER STATISTICS (ALL GAMES)**

Year	GP	GS	Min	Avg	FG	FGA	Pct	3FG	FGA	Pct	FT	FTA	Pct	Off	Def	TR	Avg	PF	FO	A	TO	Blk	Stl	Pts	Avg	
2007-08	29	9	476	16.4	39	90	.433	1	2	.500	26	40	.650	33	51	84	2.9	53	0	26	70	7	8	105	3.6	
2008-09	29	25	580	20.0	63	155	.406	4	17	.235	24	37	.649	40	41	81	2.8	57	0	18	64	19	22	154	5.3	
2009-10	33	33	571	17.3	57	133	.429	7	18	.389	24	38	.632	33	39	72	2.2	53	0	34	52	8	13	145	4.4	
2012-13	9	9	236	26.2	21	56	.375	0	0	.000	11	17	.647	12	28	40	4.4	20	0	7	16	2	7	53	5.9	
<b>TOTAL</b>																										

**UNGA CAREER STATISTICS (CONFERENCE GAMES)**

Year	GP	GS	Min	Avg	FG	FGA	Pct	3FG	FGA	Pct	FT	FTA	Pct	Off	Def	TR	Avg	PF	FO	A	TO	Blk	Stl	Pts	Avg	
2007-08	16	4	227	14.2	8	28	.286	1	2	.500	9	14	.643	15	22	37	2.3	23	0	11	31	2	6	26	1.6	
2008-09	16	12	305	19.1	35	88	.398	3	7	.429	11	18	.611	15	18	33	2.1	34	0	8	35	10	11	84	5.3	
2009-10	16	16	263	16.4	23	56	.411	3	7	.429	12	16	.750	6	20	26	1.6	24	0	15	20	6	6	61	3.8	
2012-13																										
<b>TOTAL</b>	48	32	795	16.5	66	172	.384	7	16	.438	32	48	.667	36	60	96	2.0	81	0	34	86	18	23	171	3.6	

## Walk-on Bios

**1 — CARLY STRATTON**

5-7 • FRESHMAN • GUARD • ST. GEORGE, UTAH (HURRICANE HS)

**Before BYU**

- Four-year letterwinner in basketball
- Two-time team captain
- Team MVP
- Three-time First Team All-Region
- Averaged 9.7 points, 5.3 rebounds, 5.0 assists and 3.7 steals her senior year
- Played on the Red Rocks Raider Basketball Club
- Four-year letterwinner in soccer garnering Region MVP and First Team All-Region
- Four-year letterwinner in softball garnering First Team All-Region honors
- Four-year Honor Roll, National Honor Society and four-time Top Scholar award

**Personal**

- Parents are Craig and Connie
- Has five siblings
- Born in St. George, Utah

**30 — KYLIE BROWN**

5-7 • SOPHOMORE • GUARD • GRANGEVILLE, ID (GRANGEVILLE HS)

**In 2011-12**

- Saw action in nine games
- Averaged 2.5 minutes of playing time
- Shot 22 percent from the field and 14 percent from 3-point range
- Scored a total of 7 points, 1 steal and 1 assist during her freshman campaign
- Played in four West Coast Conference games

**Personal**

- Parents are Joel and Brandy
- Has two brothers and two sisters
- Born in West Lake, California

**50 — BROOKE ROMNEY** 6-1 • FRESHMAN • FORWARD • DALLAS, TX (WOODROW WILSON & ASFM HS)**Before BYU**

- Four-year letterwinner in basketball
- Two-time Spirit Award recipient in 2011 and 2012 at ASFM
- Team captain in 2012
- Leading scorer at ASFM in 2012, averaging 15.0 points per game
- Newcomer of the Year in 2008 at Woodrow Wilson HS
- Letterwinner in volleyball, softball and track and field
- Received the Steve Fordham Award at ASFM
- Four-year Honor Roll
- National Honor Society

**Personal**

- Parents are Brent and Ella
- Has five siblings
- Born in Dallas, Texas

**Brigham Young University Combined Team Statistics (as of Dec 08, 2012)**  
**All games**

<b>RECORD:</b>	<b>OVERALL</b>	<b>HOME</b>	<b>AWAY</b>	<b>NEUTRAL</b>
ALL GAMES	5-4	2-0	3-3	0-1
CONFERENCE	0-0	0-0	0-0	0-0
NON-CONFERENCE	5-4	2-0	3-3	0-1

##	Player	gp-gs	min	Total		3-Point		F-Throw		Rebounds				pf	dq	a	to	blk	stl	pts	avg		
				fg-fga	fg%	3fg-fga	3fg%	ft-fga	ft%	off	def	tot	avg										
21	EATON, Lexi	8-8	225	28.1	45-98	.459	5-15	.333	30-44	.682	16	16	32	4.0	19	0	13	16	3	4	125	15.6	
05	HAMSON, Jennifer	2-1	48	24.0	11-21	.524	0-0	.000	6-8	.750	5	14	19	9.5	6	0	1	3	6	2	28	14.0	
04	BEESTON, Kim	9-9	300	33.3	31-78	.397	22-58	.379	10-14	.714	6	35	41	4.6	21	0	18	26	3	8	94	10.4	
33	STEED, Haley	9-9	324	36.0	26-90	.289	17-53	.321	13-15	.867	5	30	35	3.9	20	0	67	28	3	20	82	9.1	
41	BAILEY, Morgan	9-6	201	22.3	34-69	.493	0-1	.000	7-10	.700	12	43	55	6.1	15	0	6	14	9	7	75	8.3	
45	UNGA, Keilani	9-9	236	26.2	21-56	.375	0-0	.000	11-17	.647	12	28	40	4.4	20	0	7	16	2	7	53	5.9	
12	SEABORN, Stephanie	9-1	156	17.3	10-38	.263	7-33	.212	8-8	1.000	8	20	28	3.1	13	0	8	9	1	4	35	3.9	
03	GARFIELD, Ashley	9-1	113	12.6	8-24	.333	0-2	.000	16-20	.800	13	29	42	4.7	10	0	9	10	1	3	32	3.6	
11	HARRY, Xojian	9-1	144	16.0	13-33	.394	4-12	.333	2-5	.400	2	9	11	1.2	15	0	4	9	3	5	32	3.6	
15	MAEDA, Kylie	9-0	73	8.1	3-8	.375	2-5	.400	5-6	.833	2	5	7	0.8	7	0	9	6	1	5	13	1.4	
30	BROWN, Kylie	2-0	3	1.5	0-0	.000	0-0	.000	0-0	.000	0	0	0	0.0	0	0	0	0	0	0	0	0.0	
50	ROMNEY, Brooke	1-0	1	1.0	0-0	.000	0-0	.000	0-0	.000	0	1	1	1.0	0	0	0	0	0	0	0	0.0	
01	STRATTON, Carly	1-0	1	1.0	0-0	.000	0-0	.000	0-0	.000	0	0	0	0.0	1	0	0	1	0	0	0	0.0	
Team											12	19	31										
Total.....		9	1825		202-515	.392	57-179	.318	108-147	.735	93	249	342	38.0	147	0	142	139	32	65	569	63.2	
Opponents.....		9	1825		194-509	.381	42-126	.333	120-166	.723	97	241	338	37.6	125	-	101	144	21	75	550	61.1	

<b>TEAM STATISTICS</b>	<b>BY</b>	<b>OPP</b>	<b>Date</b>	<b>Opponent</b>	<b>Score</b>	<b>Att.</b>
SCORING	569	550	11/9/12	WEBER STATE	W 80-55	1120
Points per game	63.2	61.1	11/13/12	at Dartmouth	W 58-57	642
Scoring margin	+2.1	-	11/15/12	at Boston College	L 56-62	670
FIELD GOALS-ATT	202-515	194-509	11/16/12	at HARV	L 65-71	631
Field goal pct	.392	.381	11/20/12	at Arizona	W 62-48	3375
3 POINT FG-ATT	57-179	42-126	11/24/12	at Washington State	L 52-67	0
3-point FG pct	.318	.333	11/28/12	vs Creighton	Lot 62-65	325
3-pt FG made per game	6.3	4.7	12/4/12	UTAH STATE	W 81-77	449
FREE THROWS-ATT	108-147	120-166	12/08/12	at Utah	W 53-48	1925
Free throw pct	.735	.723	* = Conference game			
F-Throws made per game	12.0	13.3				
REBOUNDS	342	338				
Rebounds per game	38.0	37.6				
Rebounding margin	+0.4	-				
ASSISTS	142	101				
Assists per game	15.8	11.2				
TURNOVERS	139	144				
Turnovers per game	15.4	16.0				
Turnover margin	+0.6	-				
Assist/turnover ratio	1.0	0.7				
STEALS	65	75				
Steals per game	7.2	8.3				
BLOCKS	32	21				
Blocks per game	3.6	2.3				
ATTENDANCE	1569	7568				
Home games-Avg/Game	2-784	6-1207				
Neutral site-Avg/Game	-	1-325				

<b>Score by Periods</b>	<b>1st</b>	<b>2nd</b>	<b>OT</b>	<b>Totals</b>
Brigham Young Univer	285	278	6	569
Opponents	235	306	9	550

# 2012-2013 BYU BASKETBALL RADIO/TV ROSTER



**CARLY STRATTON**  
FRESHMAN, 5-7, GUARD



**STEPHANIE ROVETTI**  
SOPHOMORE, 5-6, GUARD



**ASHLEY GARFIELD**  
SOPHOMORE, 5-11, GUARD



**KIM PARKER BEESTON**  
JUNIOR, 5-11, GUARD



**JENNIFER HAMSON**  
JUNIOR, 6-7, CENTER



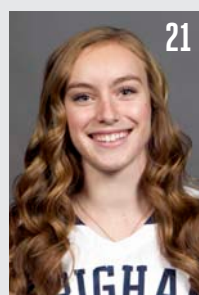
**XOJIAN HARRY**  
SOPHOMORE, 5-11, GUARD



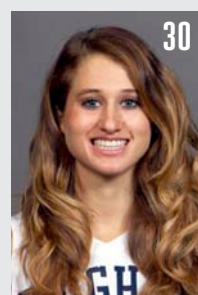
**STEPHANIE SEABORN**  
JUNIOR, 6-0, FORWARD/GUARD



**KYLIE MAEDA**  
FRESHMAN, 5-5, GUARD



**LEXI EATON**  
SOPHOMORE, 6-0,  
FORWARD/GUARD



**KYLIE BROWN**  
SOPHOMORE, 5-7, GUARD



**HALEY STEED**  
GRADUATE, 5-4, GUARD



**MORGAN BAILEY**  
SOPHOMORE, 6-2, CENTER



**KEILANI UNGA**  
SENIOR, 6-2, FORWARD



**BROOKE ROMNEY**  
FRESHMAN, 6-1, FORWARD



**JEFF JUDKINS**  
HEAD COACH



**CHRIS BOETTCHER**  
ASSISTANT COACH



**MELINDA BENDALL**  
ASSISTANT COACH



**RAY STEWART**  
ASSISTANT COACH

