



BASKETBALL

Norma Collett. BYU Athletic Communications | O: (801) 422-4908 | C: (801) 372-0989 | norma_collett@byu.edu |

BYU 2012-13 SCHEDULE

N1	Thu	Chadron State (Exh)	W 89-51	BYUtv
N2	Fri	Dixie State (Exh)	W 79-57	BYUtv
N9	Fri	Weber State	W 80-55	BYUtv
N13	Tue	at Dartmouth	W 58-57	BYU R
N15	Thu	at Boston College	L 56-62	BYU R
N16	Fri	at Harvard	L 65-71	BYU R
N20	Tue	at Arizona	W 62-48	BYU R
N24	Sat	at Washington State	L 67-52	
N28	Wed	Creighton*	L 65-62ot	BYUtv

D4	Tue	Utah State	W 81-77	BYUtv
D8	Sat	at Utah	W 53-48	BYU R
D15	Sat	Tulsa	W 70-48	BYUtv
D18	Tue	UC Santa Barbara	W 67-39	BYUtv
D20	Thu	Seattle University	W 70-62	BYUtv
D29	Sat	Western New Mexico	W 72-31	BYUtv

J5	Sat	San Francisco^	W 80-58	BYUtv
J10	Thu	at San Diego^	W 57-54ot	
J12	Sat	Pepperdine^	W 68-42	
J17	Thu	at Gonzaga^	L 74-59	BYU R
J24	Thu	Loyola Marymount^	W 72-53	BYUtv
J26	Sat	at San Francisco^	L 65-56	BYU R
J31	Thu	Saint Mary's^	W 66-58	BYUtv

F2	Sat	at Santa Clara^	W 65-48	BYU R
F7	Thu	San Diego^	6 p.m.	BYUtv
F9	Sat	at Saint Mary's^	2 p.m.	BYU R
F14	Thu	Santa Clara^	7 p.m.	BYUtv
F16	Sat	at Pepperdine^	2 p.m.	BYU R
F21	Thu	Portland^	7 p.m.	BYUtv
F23	Sat	Gonzaga^	2 p.m.	BYUtv
F28	Thu	at Loyola Marymount^	7 p.m.	

M2	Sat	at Portland^	2 p.m.	BYU R
M6	Wed	at WCC Champs	TBA	TBA
M7	Thu	at WCC Champs	TBA	TBA
M8	Fri	at WCC Champs	TBA	TBA
M9	Sat	at WCC Champs	TBA	TBA
M11	Mon	at WCC Champs	TBA	TBA

*at EnergySolutions Arena
^ West Coast Conference game

BYU	CATEGORY	USD
15-6, 6-2	W-L	15-7, 7-3
8-2	Last 10	7-3
3-2	Last 5	4-1
65.3	PPG	68.0
.419	FG%	.439
.340	3FG%	.300
.717	FT%	.628
39.0	RPG	42.9
16.9	Assist/Game	15.7
15.3	TO/Game	18.6
7.2	Steals/Game	10.0
4.0	Blocks/Game	5.4



BYU (15-6, 6-2) COUGARS

Head Coach.....Jeff Judkins
Alma Mater.....Utah, 1978
Career Record.....246-121 (12th)
Record at BYU.....Same

GAME INFORMATION

TV:.....BYUtv
TV Talent: Robbie Bullough (play-by-play)
.....Kristen Kozlowski (analyst)
Live Video:.....byutvsports.com
Live Stats:.....byucougars.com



SAN DIEGO (15-7, 7-3) TOREROS

Head Coach.....Cindy Fisher
Alma Mater.....Arizona State '88
Career Record.....179-172
Record at SD.....126-91

SERIES HISTORY

SAN DIEGO
BYU leads.....5-0
BYU at home.....2-0
BYU in San Diego.....2-0
BYU in Neutral Site.....2-0
BYU under Judkins.....5-0
Last Meeting..BYU won 57-54 on 1/13/13

BYU STORYLINES

- On the season, BYU has outrebounded its opponents in 13 of the games played
- In all but 4 contests (at USF, at Gonzaga, at Boston College and at Washington State) the Cougars have dished out more assists than their opponents
- BYU has enjoyed a halftime lead in all but 5 game to date (vs. SMC, at USF, at Gonzaga, vs. Seattle and at Washington State)
- In 3 games to date BYU had 4 players score in double figures (vs. Pepperdine, vs. Tulsa & vs. UCSB)
- In 10 of the 20 games played to date, BYU has had 3 players score in double digits

BYU PROJECTED STARTING LINEUP



#33 | Haley Steed
Guard | 5-4 | GS.
Syracuse, UT
Clearfield HS

GP/GS	MPG	Pts	Reb	Ast	Stl	FG%	3PT%	FT%
21/21	34.4	10.1	4.1	7.7	2.3	.344	.372	.857

Last Game: Had game highs in points (17), in assists (6) and in steals (4), along with 3 rebounds

Notes: Team leader in assists and in steals with 162 and 44 respectively ... has team's best free throw percentage .857 (24-28) ... plays most minutes



#4 | Kim Parker Beeston
Guard | 5-11 | Jr.
Heber City, UT
Wasatch HS

GP/GS	MPG	Pts	Reb	Ast	Stl	FG%	3PT%	FT%
21/21	30.7	10.7	3.9	2.1	1.0	.396	.375	.744

Last Game: Tallied 9 points, 4 rebounds, 1 assist, 1 block, 1 steal

Notes: Has made the most 3-pointers on the team with 48 ... ranks first in 3-point field goal percentage .375 (48-128)



#12 | Stephanie V. Seaborn
G/F | 6-0 | Jr.
Airdrie, Alb. CAN
Bert Church HS

GP/GS	MPG	Pts	Reb	Ast	Stl	FG%	3PT%	FT%
21/5	20.9	6.6	2.5	1.4	0.4	.355	.303	.821

Last Game: Dished out career highs in assists with 5, scored 9 points and grabbed 5 rebounds

Notes: Has team's second best free throw percentage .821 (23-28) ... ranks fourth in assists with a total of 29



#5 | Jennifer Hamson
Center | 6-7 | Jr.
London, UT
Pleasant Grove HS

GP/GS	MPG	Pts	Reb	Ast	Stl	FG%	3PT%	FT%
13/12	23.8	9.8	7.5	0.5	1.0	.479	.000	.625

Last Game: Grabbed 5 rebounds, tallied 2 points and dished out a season-best 2 assists

Notes: Has scored in double figures in 8 of the 113 games she's played in ... has most blocks on the team with 34... has 2nd best field goal percentage at .479 (56-117)



#45 | Keilani Unga
Forward | 6-2 | Sr.
Warrenville, IL
Weaton Warrenville HS

GP/GS	MPG	Pts	Reb	Ast	Stl	FG%	3PT%	FT%
21/21	24.2	6.3	4.2	0.4	0.6	.468	.250	.659

Last Game: Scored 13 points, grabbed a team-best 5 rebounds and got 2 blocks

Notes: Selected team co-captain ... ranks 4th in rebounding with a 4.2 average ... has 3rd most blocks with 11 ... in 2009-10 ranked fifth in total assists with 36

OFF THE BYU BENCH

No.	Name	Pos.	Ht.	Yr.	Pts.	Reb.	Hometown (Previous School)	Notes
2	Stephanie Rovetti	G	5-6	So.	2.4	0.9	Reno, NV (Reno HS)	Suffered season ending injury to left knee
3	Ashley Garfield	G	5-11	So.	4.9	5.1	Morgan, UT (Morgan HS)	3rd in rebounds 5.1 rpg, 1 double-double
11	Xojian Harry	G	5-11	So.	3.8	1.6	Bountiful, UT (Woods Cross HS)	Averages 16.5 minutes of playing time
15	Kylie Maeda	G	5-5	Fr.	1.4	1.0	Honolulu, HI (Iolani HS)	Plays in all games, 3rd in assists with 31
21	Lexi Eaton	G	5-10	So.	15.6	4.0	Mapleton, UT (Springville HS)	Season-ending ACL to right knee vs. USU
30	Kylie Brown	G	5-7	So.	0.6	0.4	Grangeville, ID (Grangeville HS)	Played in 8 games, last vs. LMU
41	Morgan Bailey	F	6-2	So.	9.2	5.5	Orem, UT (Timpanogos HS)	2nd in rebounds 5.5, 2 double-doubles
01	Carly Stratton	G	5-7	Fr.	0.3	0.3	St. George, UT (Hurricane HS)	Played in 7 games, last vs. LMU
50	Brooke Romney	F	6-1	Fr.	0.0	1.6	Dallas, TX (Woodrow Wilson/ASFM)	Played in 7 games, last vs. LMU

UNIVERSITY INFORMATION

Location Provo, Utah 84602
 Elevation. 4,553 feet
 Enrollment 33,278
 Founded. October 15, 1875
 Owned LDS Church
 Nickname Cougars
 Mascot. Cosmo the Cougar
 Colors Dark blue and white
 Conference West Coast Conference
 Arena Marriott Center (20,900)
 BYU President Cecil O. Samuelson (Utah, 1970)
 Athletic Director Tom Holmoe (BYU, 1983)
 Head Coach. Jeff Judkins (Utah, 1978)
 Office Phone 801-422-8035
 Assist. Coaches Chris Boettcher (BYU, 1994)
 Melinda Bendall (BYU, 2007)
 Ray Stewart (UJU, 2000)
 Judkins Record at BYU 246-121
 2011-12 Record 26-7
 2011-12 WCC Record 12-4, T2nd
 2011-12 NCAA First Round
 2011-12 Final Ranking n/a
 Starters Returning/Lost 3/2
 Letterwinners Returning/Lost 10/4
 Newcomers 4

RETURNING STARTERS (3)

Kim Parker Beeston	Jr.	9.5 ppg	3.1 rpg
Lexi Eaton	So.	10.5 ppg	3.1 rpg
Haley Steed	GS.	8.8 ppg	4.8 rpg

STARTERS LOST (2)

Dani Peterson	Sr.	4.0 ppg	3.1 rpg
Kristen Riley	Sr.	8.9 ppg	5.4 rpg

RETURNING LETTERWINNERS (10)

Morgan Bailey	So.	1.8 ppg	1.4 rpg
Kim Parker Beeston	Jr.	9.5 ppg	3.1 rpg
Lexi Eaton	So.	10.5 ppg	3.1 rpg
Ashley Garfield	So.	2.0 ppg	1.0 rpg
Jennifer Hamson	Jr.	9.5 ppg	5.7 rpg
Xojian Harry	So.	2.3 ppg	0.6 rpg
Stephanie Rovetti	So.	2.4 ppg	0.4 rpg
Stephanie Vermont Seaborn	Jr.	6.5 ppg	2.2 rpg
Haley Steed	GS.	8.8 ppg	4.8 rpg
Keilani Unga	Sr.	4.4 ppg	2.2 rpg*

* Stats are from the 2009-10 season

LETTERWINNERS LOST (4)

Alexis Kaufusi	1.3 ppg	1.1 rpg
Mackenzie Nielson	1.8 ppg	1.4 rpg
Dani Peterson	4.0 ppg	3.1 rpg
Kristen Riley	8.9 ppg	5.4 rpg

NEWCOMERS (4)

Kristine Fuller	5-11 Fr.	G
Kylie Maeda	5-5 Fr.	G
Makenzi Morrison	5-8 Fr.	G
Micaelee Orton	6-2 Fr.	F

2012 -13 BYU BASKETBALL ROSTER

2012-13 NUMERICAL ROSTER

No.	Name	Pos.	Ht.	Cl.	Exp.	Hometown (Previous School)
1	Carley Stratton*	G	5-7	FR	HS	St. George, Utah (Hurricane HS)
2	Stephanie Rovetti+	G	5-6	SO	1V	Reno, Nev. (Reno HS)
3	Ashley Garfield	G	5-11	SO	1V	Morgan, Utah (Morgan HS)
4	Kim Parker Beeston	G	5-11	JR	2V	Heber City, Utah (Wasatch HS)
5	Jennifer Hamson	C	6-7	JR	2V	London, Utah (Pleasant Grove HS)
11	Xojian Harry	G	5-11	SO	1V	Bountiful, Utah (Viewmont/Woods Cross HS)
12	Stephanie Vermont Seaborn	G/F	6-0	JR	2V	Airdrie, Alberta, Canada (Bert Church HS)
15	Kylie Maeda	G	5-5	FR	HS	Honolulu, Hawai'i (Iolani HS)
21	Lexi Eaton+	G/F	5-10	SO	1V	Mapleton, Utah (Springville HS)
22	Kristine Fuller#	G	5-11	FR	HS	Crystal Beach, Fla. (Palm Harbor University HS)
23	Makenzi Morrison#	G	5-8	FR	HS	Draper, Utah (Alta HS)
30	Kylie Brown*	G	5-7	SO	1V	Grangeville, Idaho (Grangeville HS)
33	Haley Steed	G	5-4	GS	4V	Syracuse, Utah (Clearfield HS)
34	Micaelee Orton#	F	6-2	FR	HS	Kearns, Utah (Kearns HS)
41	Morgan Bailey	F	6-2	SO	1V	Orem, Utah (Timpanogos HS)
45	Keilani Unga	F	6-2	SR	3V	Warrenville, Ill. (Weaton Warrenville HS)
50	Brooke Romney*	F	6-1	FR	HS	Dallas, Texas (Woodrow Wilson/ASFM HS)

+ Suffered season-ending cartilage injury to left knee in practice

+ Suffered season-ending ACL injury to right knee in the home game vs. Utah State

Will redshirt the 2012-13 season

* Denotes walk-on for 2012-13 season

Head Coach: Jeff Judkins (Utah 1978) – 12th Season

Assistant Coaches: Chris Boettcher, Melinda Bendall, Ray Stewart

Director of Basketball Operations: Wendy Anae

Athletic Trainer: Jaime Carpenter

PRONUNCIATION GUIDE

No. 11 Xojian Harry (Zoh-Zohn)

No. 15 Kylie Maeda (Mah-eh-dah)

No. 34 Micaelee Orton (Mah-kay-lee)

No. 45 Keilani Unga (Kay-law-nee Oon-gah)

Co-Team Captains

Graduate student Haley Steed and senior Keilani Unga have been chosen by their teammates as co-captains for the 2012-13 season. This is Steed's fifth straight co-captain selection.

Player Injury Report

- Sophomore guard Lexi Eaton suffered a season-ending ACL injury to her right knee during the home game vs. Utah State. She will not return to play this year. Eaton had scored in double figures in the first eight games of the season.
- Sophomore guard Stephanie Rovetti suffered a cartilage injury to her left knee in a team practice. She will not be able to play this season.

2012-13 BYU Starting Lineup

Starters	Record
Beeston, Eaton, Steed, Bailey, Unga	3-2
Beeston, Eaton, Steed, Garfield, Unga	0-1
Beeston, Eaton, Steed, Hamson, Unga	1-0
Beeston, Eaton, Steed, Seaborn, Unga	0-1
Beeston, Harry, Steed, Bailey, Unga	2-0
Beeston, Harry, Steed, Hamson, Unga	6-1
Beeston, Seaborn, Steed, Hamson, Unga	3-1*

*Indicates most recent starting lineup

BYU Capsule

With a 15-6 record and a 6-2 mark in West Coast Conference action, BYU women's basketball resumes league play this week with two contests.

This Thursday, the Cougars host San Diego (15-7, 7-3) in an early 6 p.m., MST tip off. The game will air live on BYUtv.

BYU then travels to Moraga, Calif., to battle Saint Mary's (14-6, 6-2) on Saturday at 2 p.m., PST. Cougar fans can listen to the game live on BYU Radio, Sirius XM 143 and online at byuradio.org.

The Cougar team has outrebounded its opponents in 13 of the games played. The BYU bench has outscored the opponent's bench 412-254. When comparing points in the paint, the Cougars have scored 540 points to 464 from opponents.

BYU has enjoyed a halftime lead in all but five games to date (vs. SMC, at USF, at Gonzaga, vs. Seattle and at Washington State). In only four contests (at USF, at Gonzaga, at Boston College and at Washington State) the Cougars did not record more assists than their opponents. Balanced scoring has added to the team's success this year. To date, three players have put up double figures in points in 10 games and four players finished with double-digit scoring in three games.

- Head coach: Jeff Judkins (Utah, '78), enters his 12th season
- Team's leading scorer: #4 Kim Beeston, 10.7 ppg
- Team's leading rebounder: #5 Jennifer Hamson, 7.5 rpg
- Team's assists leader: #33 Haley Steed, 7.7 apg
- Team's steals leader: #33 Steed, 2.3 spg

San Diego Capsule

Entering the week, the University of San Diego has compiled a 7-3 mark in WCC play and is 15-7 overall. The Toreros's three conference losses have been to Gonzaga, twice and to BYU in San Diego. USD returns nine letterwinners and two starters from last year's team that finished the year with a 26-9, 12-4 record (tied for second with BYU in WCC action) and went to the Final Four of the WNIT.

- Head coach: Cindy Fisher is in her 7th year at San Diego
- Team's leading scorer: #10 Amy Kame, 16.8 ppg
- Team's leading rebounder: #21 Klara Wischer, 7.6 rpg
- Team's assists leader: #10 Kame, 4.0 apg
- Team's steals leader: #10 Kame, 2.6 spg

Series History

The Cougars lead the series 5-0.

Last Meeting

These two teams met once already this season on Jan. 10 in San Diego. In that closely fought game, the Cougars came away with the three-point 57-54 win in overtime. Three Cougars scored in double figures, with Stephanie Vermunt Seaborn leading the way scoring 16. She shot 6 for 9 from the field and 3 for 5 from beyond the arc. Jennifer Hamson put up 13 points and Kim Beeston had 10, including two 3-pointers of her own. Hamson also led on the boards with nine. Haley Steed dished out 10 assists.

BYU shot 47.1 percent from 3-point land, 38.5 percent overall, and held the Toreros to shooting 31.3 percent. San Diego outrebounded BYU 47-34.

The Toreros were led in scoring by Amy Kame who had a game-best 25 points along with eight rebounds and five steals. Felicia Wijensberg also put up double digits in points with 14.

USA TODAY/ESPN Top 25 Coaches Poll Feb. 4, 2013

Rank	School (Record)
1.	Baylor (20-1)
2.	Connecticut (20-1)
3.	Notre Dame (20-1)
4.	Duke (20-1)
5.	Stanford (20-2)
6.	California (19-2)
7.	Maryland (18-3)
8.	Kentucky (19-3)
9.	Penn State (18-3)
10.	Georgia (19-3)
11.	Louisville (19-4)
12.	South Carolina (19-3)
13.	Tennessee (17-5)
14.	Purdue (18-4)
15.	Dayton (19-1)
16.	Texas A&M (18-5)
17.	UCLA (17-4)
18.	North Carolina (20-3)
19.	Oklahoma (16-5)
20.	Florida State (18-4)
21.	Oklahoma State (15-5)
22.	Syracuse (18-3)
23.	Delaware (18-3)
24.	Iowa State (15-5)
25.	Colorado (16-5)

Receiving Votes: *

* Denotes BYU Opponent

Poll Watching

Last year the Cougars began receiving votes in December and were ranked as high as No. 23 in February.

2012-13 NCAA Ranking Summary - (2/4/13)

Category - Team	Rank
Assists Per Game	16th
Assist Turnover Ratio	22nd
3-point FG's Made	30thT
3-point FG Percentage	47th
Category - Player	
Assists Per Game - H. Steed	1st
Assist Turnover Ratio - H. Steed	3rd

BYU RECORDS

2012-13 BYU Records When...

BYU leads at the half.....	13-3
Opponent leads at the half.....	2-3
Score is tied at the half.....	0-0
Games goes into overtime.....	1-1
BYU shoots 50% or better.....	2-0
Opponent shoots 50% or better.....	1-2
BYU makes five or more 3-pointers.....	13-4
Opponent makes five or more 3-pointers.....	2-4
BYU outrebounds opponent.....	10-2
Opponent outrebounds BYU.....	5-3
Rebounds are equal.....	0-0
BYU has 16 and under turnovers.....	9-5
Opponent has 16 and under turnovers.....	8-5
BYU has 17-20 turnovers.....	4-0
Opponent has 17-20 turnovers.....	4-1
BYU has more than 20 turnovers.....	2-1
Opponent has more than 20 turnovers.....	3-0
BYU dishes out more assists.....	15-2
Opponent dishes out more assists.....	0-4
BYU has more blocks.....	12-2
Opponent has more blocks.....	0-4
BYU records more steals.....	7-2
Opponent records more steals.....	4-5
In November.....	3-4
In December.....	6-0
In January.....	5-2
In February.....	1-0
In March.....	0-0
In April.....	0-0
Last five games.....	3-2
Longest win streak.....	9-0
Playing on Monday.....	0-0
Playing on Tuesday.....	4-0
Playing on Wednesday.....	0-1
Playing on Thursday.....	4-2
Playing on Friday.....	1-1
Playing on Saturday.....	6-2
Facing ranked opponents.....	0-0
Facing unranked opponents.....	0-0

2012-13 BYU TEAM HIGHS

POINTS	FG PERCENTAGE
(81)..... vs. Utah St. (12/4)	(.600)..... vs. Seattle (12/20)
REBOUNDS	3-PT FG PERCENTAGE
(49)..... vs. USF (1/5)	(.471)..... at San Diego (1/10)
3-POINTERS	FT PERCENTAGE
(13)..... vs. Utah St. (12/4)	(1.000)..... vs. USF (1/5)
ASSISTS	
(26)..... vs. USF (1/5)	
BLOCKS	
(8)..... vs. PEP (1/12)	
STEALS	
(12)..... at San Diego (1/10)	

2012-13 BYU INDIVIDUAL HIGHS

POINTS	
(24)..... L. Eaton vs. Web. St. (11/9)	
(23)..... J. Hamson at Arizona (11/20)	
(22), 1 more, last..... H. Steed at Utah (12/8)	
(19)..... H. Steed at USF (1/26)	
(19)..... K. Beeston at Harvard (11/16)	
(19)..... L. Eaton at Dartmouth (11/13)	
(18)..... L. Eaton vs. Creighton (11/28)	
(18), 1 more, last..... H. Steed at GON (1/17)	
(18)..... M. Bailey at GON (1/17)	
(17)..... H. Steed at Santa Clara (2/2)	
(16)..... S. Seaborn at San Diego (1/10)	
(15), 1 more, last..... K. Beeston at USF (1/26)	
REBOUNDS	
(16)..... A. Garfield vs. Utah St. (12/4)	
(14)..... J. Hamson at Arizona (11/20)	
(12)..... J. Hamson vs. Tulsa (12/15)	
(13)..... M. Bailey vs. USF (1/5)	
(10)..... A. Garfield vs. USF (1/5)	
(10)..... M. Bailey at Dartmouth (11/13)	
(9)..... K. Beeston vs. LMU (1/24)	
(9), twice, last..... J. Hamson vs. PEP (1/12)	
(9)..... M. Bailey vs. Utah St. (12/4)	
(9)..... L. Eaton vs. Creighton (11/28)	
(9)..... K. Unga at Boston College (11/15)	
(8)..... A. Garfield at USF (1/26)	
(8), 1 more, last..... J. Hamson vs. SMC (1/31)	
(8)..... M. Bailey at Utah (12/8)	
(8)..... K. Beeston at WashingtonSt. (11/24)	
(7)..... K. Unga at Santa Clara (2/2)	
(7)..... A. Garfield at GON (1/17)	
(7)..... M. Bailey vs. Web. St. (11/9)	
(7)..... K. Beeston vs. Web.St. (11/9)	
3-POINTERS	
(6)..... H. Steed vs. Utah St. (12/4)	
(5), 1 more, last..... K. Beeston vs. LMU (1/24)	
(4)..... K. Beeston vs. West.N.M. (12/29)	
(4), 1 more, last..... H. Steed vs. SMC (1/31)	
(3)..... S. Seaborn at San Diego (1/10)	
(3), 3 more, last..... K. Beeston vs. PEP (1/12)	
(3) more, last..... H. Steed at Santa Clara (2/2)	
ASSISTS	
(13)..... H. Steed vs. LMU (1/24)	
(12), 1 more, last..... H. Steed vs. Utah St. (12/4)	
(11)..... H. Steed vs. UCSB (12/18)	
(10)..... H. Steed at San Diego (1/10)	
(9), 3 more, last..... H. Steed vs. SMC(1/31)	
(8), 2 more, last..... H. Steed vs. USF(1/5)	
(8)..... K. Beeston vs. USF (1/5)	
(7)..... H. Steed vs. Seattle (12/20)	
(6)..... H. Steed at Santa Clara (2/2)	
BLOCKS	
(5), 3 more, last..... J. Hamson vs. PEP (1/12)	
(2)..... K. Unga at Santa Clara (2/2)	
STEALS	
(5), 2 more, last..... H. Steed vs. SMC (1/31)	
(4), 2 more, last..... H. Steed at SCU(2/2)	
(4)..... K. Maeda vs. Web. St. (11/9)	
(3), 1 more, last..... K. Beeston vs. USF (1/5)	
(3)..... X. Harry vs. Creighton (11/28)	
(3)..... K. Unga at Dartmouth (11/13)	
(3), 1 more..... M. Bailey vs. PEP (1/23)	

TRACKING RECORDS (as of 2/4/13)

CAREER Assists	Blocks
1. Haley Steed - 721 (2006-present)	1. Tresa Spaulding Hamson-494 (1983-87)
Steals	2. Debbie Dimond - 199 (1991-95)
1T. Valerie Cravens - 323 (1980-84)	3. Jennifer Hamson - 155 (2010-present)
1T. Kathy Denton - 323 (1981-1985)	1,000-Point Club
3. Thais Kidd - 273 (1991-95)	2. Tresa Spaulding Hamson - 2,309 (1983-87)
4. Haley Steed - 268 (2006-present)	16. Ambrosia Anderson - 1,285 (2002-06)
3-pointers	17. Danielle Cheesman - 1,159 (2001-05)
1. Erin Thorn - 391 (1999-03)	18. Haley Steed - 1,145 (2006-present)
2. Mallary Gillespie Carling - 294 (2004-08)	Games Played
3. Haley Steed - 235 (2006-present)	1T. Jennie Keele - 130 (2002-2007)
	1T. Haley Steed - 130 (2006-present)

WEST COAST CONFERENCE INFO**Current WCC Standings - 2/4/13**

Place	Team	Conference	Overall
1.	Gonzaga	8-1	18-5
2.	BYU	6-2	15-6
3.	Saint Mary's	6-2	14-6
4.	San Diego	7-3	15-7
5.	Santa Clara	4-5	12-10
6.	Portland	4-5	9-13
7.	San Francisco	2-7	9-13
8.	Loyola Marymount	2-7	8-14
9.	Pepperdine	1-8	4-16

2012-13 WCC Team Stats - 2/4/13

Team Stats	All	Conf
Scoring Offense	5th	4th
Scoring Defense	2nd	2nd
Scoring Margin	2nd	same
Free Throw %	2nd	same
Field Goal %	3rd	same
Field Goal % Defense	1st	same
3-Point FG %	3rd	same
3-Point FG % Defense	5th	1st
Rebounding Offense	6th	5th
Rebounding Defense	2nd	4th
Rebounding Margin	4th	same
Blocked Shots	4th	same
Assists	1st	2nd
Steals	8th	same
Turnover Margin	4th	6th
Assist/Turnover Ratio	2nd	same
Offensive Rebounds	8th	6th
Defensive Rebounds	3rd	2nd
Defensive Reb. %	1st	4th
Offensive Reb. %	7th	4th
3-Point FG Made	1st	same

2012-13 WCC Ind. Stats - 2/4/13

Ind. Overall Stats	Player/Place
Scoring	Beeston/13th
	Steed/16th
	Bailey/23rd
Rebounding	Bailey/15th
	Garfield/18th
Field Goal Percentage	Bailey/3rd
Assists	Steed/1st
Steals	Steed/4th
3-Point Field Goal Percentage	Beeston/3rd
	Steed/6th
	Seaborn/13th
3-Point Field Goals Made	Beeston/2nd
	Steed/3rd
	Seaborn/11th
Assist/Turnover Ratio	Steed/1st
Defensive Rebounds	Bailey/13th

2012-13 WCC Ind. Stats - 2/4/13

Ind. Conference Stats	Player/Place
Scoring	Steed/9th
	Beeston/14th
	Bailey/25th
	Seaborn/27th
Rebounding	Hamson/12th
	Garfield/16th
	Bailey/19th
Field Goal Percentage	Bailey/9th
Assists	Steed/1st
Free Throw Percentage	Unga/10th
Steals	Steed/2th
3-Point Field Goal Percentage	Steed/4th
	Beeston/11th
	Seaborn/14th
3-Point Field Goals Made	Steed/2nd
	Beeston/3rd
	Seaborn/8th
Blocked Shots	Hamson/2nd
Assist/Turnover Ratio	Steed/1st
Defensive Rebounds	Hamson/9th
	Garfield/15th

2012-13 WCC PRESEASON POLL**Preseason Coaches' Poll**

Place	Team	Points
1.	Brigham Young Univ. (5)	61
2.	Gonzaga (4)	60
3.	Saint Mary's	48
4.	Univ. of San Diego	36
5.	Pepperdine	33
6.	Santa Clara	27
7.	Loyola Marymount	25
8.	Portland	24
9.	San Francisco	10

Preseason All-WCC Team

Player (Yr.)	School	Pos.
Alex Cowling (Sr.)	LMU	G/F
Lexi Eaton (So.)	BYU	G
Megan Fulps (Sr.)	SCU	G
Jennifer Hamson (Jr.)	BYU	C
Amy Kame (Jr.)	SD	G
Taelor Karr (Sr.)	GON	G
Danielle Maulding (Jr.)	SMC	F
Jackie Nared (Jr.)	SMC	G
Haiden Palmer (Jr.)	GON	G
Haley Steed (Gr.)	BYU	G

HEAD COACH JEFF JUDKINS

Overall Record: 246-121/11

2012-13: 15-6, 6-2

2011-12: 26-7, 12-4/T2nd



Career Achievements

- Six 20-plus win seasons – most wins (26) twice in 2005-06 and in 2011-12
- Five NCAA Tournament appearances - best finish, Sweet Sixteen 2001-02, most recent 2012 First Round
- Three WNIT postseason tournament appearances – best finish, Quarterfinal Round (Elite Eight) 2010-11
- Three conference coach of the year awards – 2010-11, 2006-07, 2005-06 - MWC
- Two conference regular season titles – MWC (2005-06 and 2006-07)
- Two conference tournament crowns – MWC (2001-02); WCC (2011-12)
- Coached three All-Americans – Erin Thorn, Ambrosia Anderson, Kristen Riley
- Coached three conference players of the year – Ambrosia Anderson, Dani Kubik Wright, Kristen Riley
- Coached one conference defensive player of the year –Mindy Bonham
- Coached two conference sixth player of the year – Coriann Fraughton, Kristen Riley
- Became BYU's women's basketball all-time winningest coach with his 220th career win when the Cougars defeated Pepperdine, 80-56 on Jan. 12, 2012

Coaching Experience

- Assistant Coach (men) – University of Utah (1989-99)
- Assistant Coach (women)– BYU (2000-01)

Playing Career

- NBA with Boston Celtics, Portland Trailblazers, Detroit Pistons, Utah Jazz – Drafted in the second round by the Boston Celtics in 1978, the same year the Celtics selected Larry Bird with the sixth pick overall
- University of Utah – 1974-78 leading Utah to one conference championship and two berths in the NCAA tournament
- While at Utah was a second team Academic All-American, a three-time District VII academic selection and a three-time First Team All-WAC honoree
- Member of the 1977 United States World Games team that captured the gold medal

Education

University of Utah - Physical and Health Education bachelor's degree, 1978

Personal

- Married to Mary Kay
- Has five children and four grandchildren

Judkins Coaching Record			
School	Yrs.	Rec.	Postseason
BYU	2001-02	24-9	NCAA Sweet 16
BYU	2002-03	19-12	NCAA 1st Round
BYU	2003-04	15-14	DNC
BYU	2004-05	19-11	WNIT 1st Round
BYU	2005-06	26-6	NCAA 2nd Round
BYU	2006-07	23-10	NCAA 1st Round
BYU	2007-08	13-16	DNC
BYU	2008-09	18-11	DNC
BYU	2009-10	23-10	WNIT Quarterfinals
BYU	2010-11	25-9	WNIT Third Round
BYU	2011-12	26-7	NCAA 1st Round
Record:		231-115 (.668)	

**2 — STEPHANIE ROVETTI**

5-6 • SOPHOMORE • GUARD • RENO, NEVADA (RENO HS)

In 2012-13

- Suffered season-ending cartilage injury to left knee in practice

In 2011-12

- Played in 31 of the 33 total games
- Averaged 7.5 minutes of playing time
- Posted season highs of 12 points, 6 rebounds, 4 assists and 4 steals
- Averaged 2.4 points per game
- Shot 45 percent from the field and 76 percent from the free throw line
- Recorded her first ever double figure game with 12 points at Tulsa on 11/14/11

2011-12 SEASON HIGHS

PTS	12, at Tulsa – 11/11/11
REB	6, at BYU-H – 11/29/11
AST	4, vs. SUU – 12/8/11
STL	4, vs. SUU – 12/8/11
BLK	—
FGM	4, at Seattle U – 1/25/12
FGA	4, three, last at Seattle U - 1/25/12
3PM	—
3PA	1, three, last vs. Portland – 1/21/12
FTM	8, twice, last vs. SUU – 12/8/11
FTA	10, at Tulsa – 11/11/11

In 2010-11

- Redshirt

Personal

- Parents are David and Diana
- Has one brother and three sisters
- Sister Morgan played on the BYU Rugby Team and the U-20 Women's National Rugby Team
- Majoring in dietetics

CAREER HIGHS

PTS	12, at Tulsa – 11/11/11
REB	6, at BYU-H – 11/29/11
AST	4, vs. SUU – 12/8/11
STL	4, vs. SUU – 12/8/11
BLK	—
FGM	4, at Seattle U – 1/25/12
FGA	4, three, last at Seattle U - 1/25/12
3PM	—
3PA	1, three, last vs. Portland – 1/21/12
FTM	8, twice, last vs. SUU – 12/8/11
FTA	10, at Tulsa – 11/11/11

MISCELLANEOUS

	11-12	Career
Double-Figure PTS	1	1
10-plus Pts	1	1
Double-Doubles	0	0
3-plus AST	4	4
3-plus STL	3	3
3-plus 3-point FG	0	0
Scoring Leader	0	0
Rebound Leader	0	0
Assist Leader	0	0

ROVETTI CAREER STATISTICS (ALL GAMES)

Year	GP	GS	Min	Avg	FG	FGA	Pct	3FG	FGA	Pct	FT	FTA	Pct	Off	Def	TR	Avg	PF	FO	A	TO	Blk	Stl	Pts	Avg
2011-12	31	0	233	7.5	17	38	.447	0	3	.000	41	54	.759	9	20	29	0.9	28	0	28	35	1	19	75	2.4
TOTAL	31	0	233	7.5	17	38	.447	0	3	.000	41	54	.759	9	20	29	0.9	28	0	28	35	1	19	75	2.4

ROVETTI CAREER STATISTICS (CONFERENCE GAMES)

Year	GP	GS	Min	Avg	FG	FGA	Pct	3FG	FGA	Pct	FT	FTA	Pct	Off	Def	TR	Avg	PF	FO	A	TO	Blk	Stl	Pts	Avg
2011-12	15	0	80	5.3	7	14	.500	0	1	.000	7	11	.636	2	4	6	0.4	13	0	8	11	1	4	21	1.4
TOTAL	15	0	80	5.3	7	14	.500	0	1	.000	7	11	.636	2	4	6	0.4	13	0	8	11	1	4	21	1.4

21 — LEXI EATON

5-10 • SOPHOMORE • GUARD • MAPLETON, UTAH (SPRINGVILLE HS)



In 2012-13

- Suffered season-ending ACL injury to right knee during the home game vs. Utah State
- Had team highs in points and in rebounds with 18 and 9 respectively vs. Creighton, the points mark the 7th time on the year that she's finished the game in double figure points, the rebounds were season and career bests
- Led the team in points with 13 at Washington State marking her 6th straight double figure outing in points
- Finished the game at Arizona with 12 points for her 5th straight double figure contest while going 6-for-6 from the free throw line
- Led all scorers with 17 points at Boston College while grabbing 5 boards and 3 assists
- Recorded second straight double figure outing in points at Dartmouth with 19 leading all scorers
- In the game at Dartmouth shot .833, 5-6 from the charity stripe
- Led all scorers with 24 points in the home opener vs. Weber State while dishing out 4 assists and getting 1 block

2012-13 SEASON HIGHS

PTS	24, vs. Weber State – 11/9/12
REB	9, vs. Creighton at ESA – 11/28/12
AST	4, vs. Weber State – 11/9/12
STL	1, at Arizona – 11/20/12
BLK	1, vs. Weber State – 11/9/12
FGM	9, vs. Weber State – 11/9/12
FGA	17, at Washington State – 11/24/12
3PM	2, at Dartmouth – 11/13/12
3PA	4, at Dartmouth – 11/13/12
FTM	6, twice, last vs. Creighton – 11/28/12
FTA	8, twice, last vs. Creighton – 11/28/12

In 2011-12

- Started in all 33 games as a freshman
- Team's second leading scorer averaging 10.5 points per game
- Ranked fourth in field goal percentage .458 (131-286)
- Scored in double digits in 20 games
- Named WCC Co-Newcomer of the Year and made the WCC All-Freshman Team
- Was named the Female Rookie of the Year by the Cougar Club
- In the WCC ranked seventh in field goal percentage and 18th in scoring
- Posted season highs of 26 points, 8 rebounds, 2 3-pointers, 5 assists, 4 steals and 2 blocks
- The 26 points vs. San Diego in the WCC Championships were the most scored by any BYU player on the year
- Is a dual-sport student-athlete competing as a high jumper on the women's track and field team

CAREER HIGHS

PTS	26, vs. San Diego – 3/3/12
REB	9, vs. Creighton – 11/28/12
AST	5, vs. Portland – 1/21/12
STL	4 vs. Nevada – 12/22/11
BLK	2, three, last at San Diego – 1/14/12
FGM	10, vs. San Diego – 3/3/12
FGA	20, vs. Duke – 11/11/11
3PM	3, twice, last vs. San Diego – 3/3/12
3PA	5, vs. San Diego – 3/3/12
FTM	6, three, last vs. Creighton – 11/28/12
FTA	8, twice, last vs. Creighton – 11/28/12

Personal

- Parents are Alan and Aleisa
- Has six siblings
- Majoring in psychology

MISCELLANEOUS

	12-13	Career
Double-Figure PTS	7	27
20-plus Pts	1	2
Double-Doubles	0	0
3-plus AST	3	12
3-plus STL	0	4
3-plus 3-point FG	0	2
Scoring Leader	4	9
Rebound Leader	1	1
Assist Leader	0	0

EATON CAREER STATISTICS (ALL GAMES)

Year	GP	GS	Min	Avg	FG	FGA	Pct	3FG	FGA	Pct	FT	FTA	Pct	Off	Def	TR	Avg	PF	FO	A	TO	Blk	Stl	Pts	Avg
2011-12	33	33	752	22.8	131	286	.458	21	60	.350	63	82	.768	49	52	101	3.1	67	1	60	95	13	39	346	10.5
2012-13	8	8	225	28.1	45	98	.459	5	15	.333	30	44	.682	16	16	32	4.0	19	0	13	16	3	4	125	15.6
TOTAL																									

EATON CAREER STATISTICS (CONFERENCE GAMES)

Year	GP	GS	Min	Avg	FG	FGA	Pct	3FG	FGA	Pct	FT	FTA	Pct	Off	Def	TR	Avg	PF	FO	A	TO	Blk	Stl	Pts	Avg
2011-12	16	16	371	23.2	65	139	.468	14	36	.389	32	44	.727	26	23	49	3.1	37	0	27	51	10	13	176	11.0
2012-13																									
TOTAL	16	16	371	23.2	65	139	.468	14	36	.389	32	44	.727	26	23	49	3.1	37	0	27	51	10	13	176	11.0

Walk-on Bios

**1 — CARLY STRATTON**

5-7 • FRESHMAN • GUARD • ST. GEORGE, UTAH (HURRICANE HS)

Before BYU

- Four-year letterwinner in basketball
- Two-time team captain
- Team MVP
- Three-time First Team All-Region
- Averaged 9.7 points, 5.3 rebounds, 5.0 assists and 3.7 steals her senior year
- Played on the Red Rocks Raider Basketball Club
- Four-year letterwinner in soccer garnering Region MVP and First Team All-Region
- Four-year letterwinner in softball garnering First Team All-Region honors
- Four-year Honor Roll, National Honor Society and four-time Top Scholar award

Personal

- Parents are Craig and Connie
- Has five siblings
- Born in St. George, Utah

**30 — KYLIE BROWN**

5-7 • SOPHOMORE • GUARD • GRANGEVILLE, ID (GRANGEVILLE HS)

In 2011-12

- Saw action in nine games
- Averaged 2.5 minutes of playing time
- Shot 22 percent from the field and 14 percent from 3-point range
- Scored a total of 7 points, 1 steal and 1 assist during her freshman campaign
- Played in four West Coast Conference games

Personal

- Parents are Joel and Brandy
- Has two brothers and two sisters
- Born in West Lake, California

**50 — BROOKE ROMNEY** 6-1 • FRESHMAN • FORWARD • DALLAS, TX (WOODROW WILSON & ASFM HS)**Before BYU**

- Four-year letterwinner in basketball
- Two-time Spirit Award recipient in 2011 and 2012 at ASFM
- Team captain in 2012
- Leading scorer at ASFM in 2012, averaging 15.0 points per game
- Newcomer of the Year in 2008 at Woodrow Wilson HS
- Letterwinner in volleyball, softball and track and field
- Received the Steve Fordham Award at ASFM
- Four-year Honor Roll
- National Honor Society

Personal

- Parents are Brent and Ella
- Has five siblings
- Born in Dallas, Texas

Brigham Young University Combined Team Statistics (as of Feb 02, 2013)
All games

RECORD:	OVERALL	HOME	AWAY	NEUTRAL
ALL GAMES	15-6	10-0	5-5	0-1
CONFERENCE	6-2	4-0	2-2	0-0
NON-CONFERENCE	9-4	6-0	3-3	0-1

##	Player	gp-gs	min	Total		3-Point		F-Throw		Rebounds				pf	dq	a	to	blk	stl	pts	avg			
				fg-fga	fg%	3fg-fga	3fg%	ft-fa	ft%	off	def	tot	avg											
21	EATON, Lexi	8-8	225	28.1	45-98	.459	5-15	.333	30-44	.682	16	16	32	4.0	19	0	13	16	3	4	125	15.6		
04	BEESTON, Kim	21-21	645	30.7	72-182	.396	48-128	.375	32-43	.744	15	67	82	3.9	48	1	45	48	5	20	224	10.7		
33	STEED, Haley	21-21	722	34.4	72-209	.344	45-121	.372	24-28	.857	13	74	87	4.1	36	0	162	59	4	48	213	10.1		
05	HAMSON, Jennifer	13-12	309	23.8	56-117	.479	0-0	.000	15-24	.625	23	74	97	7.5	34	2	6	31	34	13	127	9.8		
41	BAILEY, Morgan	21-7	448	21.3	85-161	.528	4-7	.571	19-33	.576	29	86	115	5.5	42	1	16	28	14	14	193	9.2		
12	SEABORN, Stephanie	21-5	439	20.9	44-124	.355	27-89	.303	23-28	.821	16	37	53	2.5	24	0	29	24	1	8	138	6.6		
45	UNGA, Keilani	21-21	509	24.2	52-111	.468	1-4	.250	27-41	.659	26	62	88	4.2	47	0	17	42	11	13	132	6.3		
03	GARFIELD, Ashley	21-1	325	15.5	33-71	.465	2-11	.182	35-43	.814	33	74	107	5.1	21	0	22	18	2	11	103	4.9		
11	HARRY, Xojian	21-9	346	16.5	30-85	.353	10-39	.256	10-17	.588	8	25	33	1.6	36	0	11	19	7	10	80	3.8		
15	MAEDA, Kylie	21-0	210	10.0	10-26	.385	4-12	.333	5-6	.833	4	17	21	1.0	17	0	31	21	2	8	29	1.4		
30	BROWN, Kylie	8-0	25	3.1	2-7	.286	1-5	.200	0-0	.000	0	3	3	0.4	0	0	1	3	0	2	5	0.6		
01	STRATTON, Carly	7-0	25	3.6	1-3	.333	0-1	.000	0-0	.000	0	2	2	0.3	4	0	1	4	0	1	2	0.3		
50	ROMNEY, Brooke	7-0	22	3.1	0-4	.000	0-0	.000	0-0	.000	6	5	11	1.6	2	0	1	3	1	0	0	0.0		
Team											42	46	88											
Total.....		21	4250	502-1198		.419	147-432	.340	220-307	.717	231	588	819	39.0	330	4	355	322	84	152	1371	65.3		
Opponents.....		21	4250	429-1187		.361	78-256	.305	246-360	.683	236	513	749	35.7	277	-	237	317	45	161	1182	56.3		

TEAM STATISTICS	BY	OPP	Date	Opponent	Score	Att.	
SCORING	1371	1182	11/9/12	WEBER STATE	W 80-55	1120	
Points per game	65.3	56.3	11/13/12	at Dartmouth	W 58-57	642	
Scoring margin	+9.0	-	11/15/12	at Boston College	L 56-62	670	
FIELD GOALS-ATT	502-1198	429-1187	11/16/12	at HARV	L 65-71	631	
Field goal pct	.419	.361	11/20/12	at Arizona	W 62-48	3375	
3 POINT FG-ATT	147-432	78-256	11/24/12	at Washington State	L 52-67	0	
3-point FG pct	.340	.305	11/28/12	vs Creighton	Lot 62-65	325	
3-pt FG made per game	7.0	3.7	12/4/12	UTAH STATE	W 81-77	449	
FREE THROWS-ATT	220-307	246-360	12/08/12	at Utah	W 53-48	1925	
Free throw pct	.717	.683	12/15/12	TULSA	W 70-48	439	
F-Throws made per game	10.5	11.7	12/18/12	UC SANTA BARBARA	W 67-39	289	
REBOUNDS	819	749	12/20/12	SEATTLE UNIVERSITY	W 70-62	425	
Rebounds per game	39.0	35.7	12/29/12	WESTERN NEW MEXICO	W 72-31	787	
Rebounding margin	+3.3	-	* 01/05/13	SAN FRANCISCO	W 80-58	719	
ASSISTS	355	237	* 1/10/13	at San Diego	Wot 57-54	352	
Assists per game	16.9	11.3	* 1/12/13	PEPPERDINE UNIVERSIT	W 68-42	784	
TURNOVERS	322	317	* 01/17/13	at GONZAGA BULLDOGS	L 59-74	6000	
Turnovers per game	15.3	15.1	* 01/24/13	LOYOLA MARYMOUNT	W 72-53	854	
Turnover margin	-0.2	-	* 01/26/13	at San Francisco Dons	L 56-65	557	
Assist/turnover ratio	1.1	0.7	* 01/31/13	SAINT MARY'S	W 66-58	682	
STEALS	152	161	* 02/02/13	at Santa Clara	W 65-48	0	
Steals per game	7.2	7.7					
BLOCKS	84	45					
Blocks per game	4.0	2.1					
ATTENDANCE	6548	14477					
Home games-Avg/Game	10-655	10-1415					
Neutral site-Avg/Game	-	1-325					

* = Conference game

Score by Periods	1st	2nd	OT	Totals
Brigham Young Univer	663	694	14	1371
Opponents	545	623	14	1182

Brigham Young University Combined Team Statistics (as of Feb 02, 2013)
Conference games

RECORD:	OVERALL	HOME	AWAY	NEUTRAL
ALL GAMES	6-2	4-0	2-2	0-0
CONFERENCE	6-2	4-0	2-2	0-0
NON-CONFERENCE	0-0	0-0	0-0	0-0

##	Player	gp-gs	min	avg	Total		3-Point		F-Throw		Rebounds					a	to	blk	stl	pts	avg			
					fg-fga	fg%	3fg-fga	3fg%	ft-fa	ft%	off	def	tot	avg	pf							dq		
33	STEED, Haley	8-8	282	35.2	36-92	.391	23-50	.460	6-7	.857	6	29	35	4.4	14	0	63	19	0	20	101	12.6		
04	BEESTON, Kim	8-8	249	31.1	30-78	.385	18-51	.353	12-16	.750	8	23	31	3.9	16	0	19	15	2	8	90	11.3		
41	BAILEY, Morgan	8-1	178	22.3	30-65	.462	2-4	.500	9-15	.600	14	29	43	5.4	19	1	8	11	5	5	71	8.9		
12	SEABORN, Stephanie	8-4	211	26.4	22-62	.355	13-40	.325	11-15	.733	5	11	16	2.0	9	0	14	12	0	3	68	8.5		
45	UNGA, Keilani	8-8	180	22.5	20-37	.541	1-3	.333	16-22	.727	9	26	35	4.4	20	0	1	14	7	4	57	7.1		
05	HAMSON, Jennifer	7-7	160	22.9	21-54	.389	0-0	.000	4-6	.667	9	35	44	6.3	23	2	2	20	16	9	46	6.6		
03	GARFIELD, Ashley	8-0	146	18.3	17-30	.567	1-5	.200	13-16	.813	14	31	45	5.6	8	0	10	4	0	5	48	6.0		
11	HARRY, Xojian	8-4	130	16.3	11-33	.333	5-20	.250	3-6	.500	2	10	12	1.5	12	0	3	5	2	4	30	3.8		
15	MAEDA, Kylie	8-0	73	9.1	4-9	.444	2-6	.333	0-0	.000	2	5	7	0.9	9	0	12	9	1	0	10	1.3		
01	STRATTON, Carly	3-0	7	2.3	1-3	.333	0-1	.000	0-0	.000	0	2	2	0.7	1	0	0	1	0	0	2	0.7		
30	BROWN, Kylie	3-0	5	1.7	0-2	.000	0-2	.000	0-0	.000	0	1	1	0.3	0	0	1	1	0	0	0	0.0		
50	ROMNEY, Brooke	3-0	4	1.3	0-1	.000	0-0	.000	0-0	.000	2	0	2	0.7	1	0	0	1	0	0	0	0.0		
Team											21	21	42						5					
Total.....		8	1625		192-466	.412	65-182	.357	74-103	.718	92	223	315	39.4	132	3	133	117	33	58	523	65.4		
Opponents.....		8	1625		164-462	.355	26-97	.268	98-147	.667	102	196	298	37.2	104	-	96	109	17	48	452	56.5		

TEAM STATISTICS	BY	OPP	Date	Opponent	Score	Att.
SCORING	523	452	* 01/05/13	SAN FRANCISCO	w 80-58	719
Points per game	65.4	56.5	* 1/10/13	at San Diego	Wot 57-54	352
Scoring margin	+8.9	-	* 1/12/13	PEPPERDINE UNIVERSIT	w 68-42	784
FIELD GOALS-ATT	192-466	164-462	* 01/17/13	at GONZAGA BULLDOGS	L 59-74	6000
Field goal pct	.412	.355	* 01/24/13	LOYOLA MARYMOUNT	w 72-53	854
3 POINT FG-ATT	65-182	26-97	* 01/26/13	at San Francisco Dons	L 56-65	557
3-point FG pct	.357	.268	* 01/31/13	SAINT MARY'S	w 66-58	682
3-pt FG made per game	8.1	3.3	* 02/02/13	at Santa Clara	w 65-48	0
FREE THROWS-ATT	74-103	98-147	* = Conference game			
Free throw pct	.718	.667				
F-Throws made per game	9.3	12.3				
REBOUNDS	315	298				
Rebounds per game	39.4	37.2				
Rebounding margin	+2.1	-				
ASSISTS	133	96				
Assists per game	16.6	12.0				
TURNOVERS	117	109				
Turnovers per game	14.6	13.6				
Turnover margin	-1.0	-				
Assist/turnover ratio	1.1	0.9				
STEALS	58	48				
Steals per game	7.3	6.0				
BLOCKS	33	17				
Blocks per game	4.1	2.1				
ATTENDANCE	3039	6909				
Home games-Avg/Game	4-760	4-1727				
Neutral site-Avg/Game	-	0-0				

Score by Periods	1st	2nd	OT	Totals
Brigham Young Univer	233	282	8	523
Opponents	219	228	5	452

2012-2013 BYU BASKETBALL RADIO/TV ROSTER



CARLY STRATTON
FRESHMAN, 5-7, GUARD



STEPHANIE ROVETTI
SOPHOMORE, 5-6, GUARD



ASHLEY GARFIELD
SOPHOMORE, 5-11, GUARD



KIM PARKER BEESTON
JUNIOR, 5-11, GUARD



JENNIFER HAMSON
JUNIOR, 6-7, CENTER



XOJIAN HARRY
SOPHOMORE, 5-11, GUARD



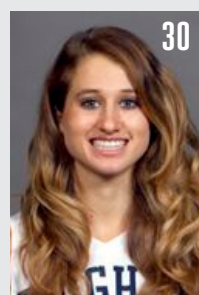
STEPHANIE SEABORN
JUNIOR, 6-0, FORWARD/GUARD



KYLIE MAEDA
FRESHMAN, 5-5, GUARD



LEXI EATON
SOPHOMORE, 6-0,
FORWARD/GUARD



KYLIE BROWN
SOPHOMORE, 5-7, GUARD



HALEY STEED
GRADUATE, 5-4, GUARD



MORGAN BAILEY
SOPHOMORE, 6-2, CENTER



KEILANI UNGA
SENIOR, 6-2, FORWARD



BROOKE ROMNEY
FRESHMAN, 6-1, FORWARD



JEFF JUDKINS
HEAD COACH



CHRIS BOETTCHER
ASSISTANT COACH



MELINDA BENDALL
ASSISTANT COACH



RAY STEWART
ASSISTANT COACH

