



BASKETBALL

Norma Collett. BYU Athletic Communications | O: (801) 422-4908 | C: (801) 372-0989 | norma_collett@byu.edu |

BYU 2012-13 SCHEDULE

N1	Thu	Chadron State (Exh)	W 89-51	BYUtv
N2	Fri	Dixie State (Exh)	W 79-57	BYUtv
N9	Fri	Weber State	W 80-55	BYUtv
N13	Tue	at Dartmouth	W 58-57	BYU R
N15	Thu	at Boston College	L 56-62	BYU R
N16	Fri	at Harvard	L 65-71	BYU R
N20	Tue	at Arizona	W 62-48	BYU R
N24	Sat	at Washington State	L 67-52	
N28	Wed	Creighton*	L 65-62ot	BYUtv
D4	Tue	Utah State	W 81-77	BYUtv
D8	Sat	at Utah	W 53-48	BYU R
D15	Sat	Tulsa	W 70-48	BYUtv
D18	Tue	UC Santa Barbara	W 67-39	BYUtv
D20	Thu	Seattle University	W 70-62	BYUtv
D29	Sat	Western New Mexico	W 72-31	BYUtv
J5	Sat	San Francisco^	W 80-58	BYUtv
J10	Thu	at San Diego^	W 57-54ot	
J12	Sat	Pepperdine^	W 68-42	
J17	Thu	at Gonzaga^	L 74-59	BYU R
J24	Thu	Loyola Marymount^	W 72-53	BYUtv
J26	Sat	at San Francisco^	L 65-56	BYU R
J31	Thu	Saint Mary's^	W 66-58	BYUtv
F2	Sat	at Santa Clara^	W 65-48	BYU R
F7	Thu	San Diego^	W 53-48	BYUtv
F9	Sat	at Saint Mary's^	L 64-52	BYU R
F14	Thu	Santa Clara^	W 65-42	BYUtv
F16	Sat	at Pepperdine^	W 67-44	BYU R
F21	Thu	Portland^	W 79-64	BYUtv
F23	Sat	Gonzaga^	L 66-55	BYUtv
F28	Thu	at Loyola Marymount^	7 p.m.	
M2	Sat	at Portland^	2 p.m.	BYU R
M6	Wed	at WCC Champs	TBA	TBA
M7	Thu	at WCC Champs	TBA	TBA
M8	Fri	at WCC Champs	TBA	TBA
M9	Sat	at WCC Champs	TBA	TBA
M11	Mon	at WCC Champs	TBA	TBA

*at EnergySolutions Arena
^ West Coast Conference game

BYU	CATEGORY	LMU
19-8, 10-4	W-L	23-5, 13-1
7-3	Last 10	3-7
3-2	Last 5	2-3
64.5	PPG	65.3
.424	FG%	.372
.344	3FG%	.278
.693	FT%	.686
39.1	RPG	39.7
17.1	Assist/Game	13.4
15.4	TO/Game	15.9
6.8	Steals/Game	11.3
4.6	Blocks/Game	2.9



BYU (19-8, 10-4) COUGARS

Head Coach: Jeff Judkins
Alma Mater: Utah, 1978
Career Record: 250-123 (12th)
Record at BYU: Same

GAME INFORMATION

Live Video: byucougars.com
Live Stats: byucougars.com



LMU (10-17, 4-10) LIONS

Head Coach: Charity Elliott
Alma Mater: S. W. Missouri St. '92
Career Record: 182-123
Record at LMU: 1st Season

SERIES HISTORY LOYOLA MARYMOUNT

BYU leads: 5-0
BYU at home: 2-0
BYU in Los Angeles: 1-0
BYU in Neutral Site: 2-0
BYU under Judkins: 3-0
Last Meeting: BYU won 72-53 on 1/24/13

BYU STORYLINES

- On the season, BYU has outrebounded its opponents in 17 of the 27 games played
- In all but 5 contests (vs. Gonzaga, at USF, at Gonzaga, at Boston College and at Washington State) the Cougars have dished out more assists than their opponents
- BYU has been ahead at halftime in all but 7 games to date (vs. Gonzaga, vs. SD, vs. SMC, at USF, at Gonzaga, vs. Seattle and at Washington State)
- In 4 games to date BYU had 4 players score in double figures (at PEP, vs. PEP, vs. Tulsa & vs. UCSB)
- In 12 of the 27 games played to date, BYU has had 3 players score in double digits

BYU PROJECTED STARTING LINEUP



#33 | Haley Steed
Guard | 5-4 | GS.
Syracuse, UT
Clearfield HS

GP/GS	MPG	Pts	Reb	Ast	Stl	FG%	3PT%	FT%
27/27	34.7	10.7	3.9	7.8	2.2	.366	.382	.867

Last Game: Scored 14 points, dished out 9 assists, had 2 steals and pulled down 5 rebounds

Notes: Has most assists and steals with 211 and 58 respectively ... has best free throw percentage .867 (26-30) and best 3-point field goal percentage .382 (60-157)



#4 | Kim Parker Beeston
Guard | 5-11 | Jr.
Heber City, UT
Wasatch HS

GP/GS	MPG	Pts	Reb	Ast	Stl	FG%	3PT%	FT%
27/27	30.4	10.0	4.0	2.4	0.9	.388	.375	.735

Last Game: Dished out 3 assists, grabbed 1 rebound and scored 2 points

Notes: Has 2nd most 3-pointers on the team with 57 ... ranks 2nd in 3-point field goal percentage .375 (57-152) ... is 2nd on the team in assists (64) and steals (23)



#12 | Stephanie V. Seaborn
G/F | 6-0 | Jr.
Airdrie, Alb. CAN
Bert Church HS

GP/GS	MPG	Pts	Reb	Ast	Stl	FG%	3PT%	FT%
27/11	21.5	6.1	2.6	1.5	0.4	.344	.304	.821

Last Game: Grabbed 3 rebounds, scored 3 points, had 1 assist and 1 steal

Notes: Has team's 2nd best free throw percentage .821 (23-28) ... ranks third in assists with 41



#5 | Jennifer Hamson
Center | 6-7 | Jr.
London, UT
Pleasant Grove HS

GP/GS	MPG	Pts	Reb	Ast	Stl	FG%	3PT%	FT%
19/18	23.8	10.4	7.9	0.6	0.9	.515	.000	.568

Last Game: Had game-highs in points, rebounds and blocks with 20, 8 and 4 respectively, also had 1 steal

Notes: Has scored in double figures in 12 of the 19 games she's played in including the last 4 ... has most blocks with 50 ... has best field goal percentage at .515 (86-167)



#45 | Keilani Unga
Forward | 6-2 | Sr.
Warrenville, IL
Weaton Warrenville HS

GP/GS	MPG	Pts	Reb	Ast	Stl	FG%	3PT%	FT%
27/27	24.8	7.3	4.4	0.9	0.7	.503	.250	.698

Last Game: Put up 7 points, pulled down 3 rebounds and had 1 assist while shooting 75 percent from the free throw line

Notes: Selected team co-captain ... ranks 4th in rebounding with a 4.4 average ... has 3rd most blocks with 18 ... has 3rd best field goal percentage at .503 (79-157)

OFF THE BYU BENCH

No.	Name	Pos.	Ht.	Yr.	Pts.	Reb.	Hometown (Previous School)	Notes
2	Stephanie Rovetti	G	5-6	So.	2.4	0.9	Reno, NV (Reno HS)	Suffered season ending injury to left knee
3	Ashley Garfield	G	5-11	So.	4.7	5.0	Morgan, UT (Morgan HS)	3rd in rebounds 5.0 rpg, 1 double-double
11	Xojian Harry	G	5-11	So.	3.8	1.5	Bountiful, UT (Woods Cross HS)	Averages 16.0 minutes of playing time
15	Kylie Maeda	G	5-5	Fr.	1.3	1.0	Honolulu, HI (Iolani HS)	Plays in all games, 4th in assists with 34
21	Lexi Eaton	G	5-10	So.	15.6	4.0	Mapleton, UT (Springville HS)	Season-ending ACL to right knee vs. USU
30	Kylie Brown	G	5-7	So.	0.5	0.3	Grangeville, ID (Grangeville HS)	Played in 10 games, last vs. Portland
41	Morgan Bailey	F	6-2	So.	8.8	5.5	Orem, UT (Timpanogos HS)	2nd in rebounds 5.5, 2 double-doubles
01	Carly Stratton	G	5-7	Fr.	0.2	0.3	St. George, UT (Hurricane HS)	Played in 10 games, last vs. Portland
50	Brooke Romney	F	6-1	Fr.	0.0	1.2	Dallas, TX (Woodrow Wilson/ASFM)	Played in 9 games, last vs. Portland

UNIVERSITY INFORMATION

Location Provo, Utah 84602
 Elevation. 4,553 feet
 Enrollment 33,278
 Founded. October 15, 1875
 Owned LDS Church
 Nickname Cougars
 Mascot. Cosmo the Cougar
 Colors Dark blue and white
 Conference West Coast Conference
 Arena Marriott Center (20,900)
 BYU President Cecil O. Samuelson (Utah, 1970)
 Athletic Director Tom Holmoe (BYU, 1983)
 Head Coach. Jeff Judkins (Utah, 1978)
 Office Phone 801-422-8035
 Assist. Coaches Chris Boettcher (BYU, 1994)
 Melinda Bendall (BYU, 2007)
 Ray Stewart (UJU, 2000)
 Judkins Record at BYU 250-123
 2011-12 Record 26-7
 2011-12 WCC Record 12-4, T2nd
 2011-12 NCAA First Round
 2011-12 Final Ranking n/a
 Starters Returning/Lost 3/2
 Letterwinners Returning/Lost 10/4
 Newcomers 4

RETURNING STARTERS (3)

Kim Parker Beeston	Jr.	9.5 ppg	3.1 rpg
Lexi Eaton	So.	10.5 ppg	3.1 rpg
Haley Steed	GS.	8.8 ppg	4.8 rpg

STARTERS LOST (2)

Dani Peterson	Sr.	4.0 ppg	3.1 rpg
Kristen Riley	Sr.	8.9 ppg	5.4 rpg

RETURNING LETTERWINNERS (10)

Morgan Bailey	So.	1.8 ppg	1.4 rpg
Kim Parker Beeston	Jr.	9.5 ppg	3.1 rpg
Lexi Eaton	So.	10.5 ppg	3.1 rpg
Ashley Garfield	So.	2.0 ppg	1.0 rpg
Jennifer Hamson	Jr.	9.5 ppg	5.7 rpg
Xojian Harry	So.	2.3 ppg	0.6 rpg
Stephanie Rovetti	So.	2.4 ppg	0.4 rpg
Stephanie Vermont Seaborn	Jr.	6.5 ppg	2.2 rpg
Haley Steed	GS.	8.8 ppg	4.8 rpg
Keilani Unga	Sr.	4.4 ppg	2.2 rpg*

* Stats are from the 2009-10 season

LETTERWINNERS LOST (4)

Alexis Kaufusi	1.3 ppg	1.1 rpg
Mackenzie Nielson	1.8 ppg	1.4 rpg
Dani Peterson	4.0 ppg	3.1 rpg
Kristen Riley	8.9 ppg	5.4 rpg

NEWCOMERS (4)

Kristine Fuller	5-11 Fr.	G
Kylie Maeda	5-5 Fr.	G
Makenzi Morrison	5-8 Fr.	G
Micaelee Orton	6-2 Fr.	F

2012 -13 BYU BASKETBALL ROSTER

2012-13 NUMERICAL ROSTER

No.	Name	Pos.	Ht.	Cl.	Exp.	Hometown (Previous School)
1	Carley Stratton*	G	5-7	FR	HS	St. George, Utah (Hurricane HS)
2	Stephanie Rovetti+	G	5-6	SO	1V	Reno, Nev. (Reno HS)
3	Ashley Garfield	G	5-11	SO	1V	Morgan, Utah (Morgan HS)
4	Kim Parker Beeston	G	5-11	JR	2V	Heber City, Utah (Wasatch HS)
5	Jennifer Hamson	C	6-7	JR	2V	London, Utah (Pleasant Grove HS)
11	Xojian Harry	G	5-11	SO	1V	Bountiful, Utah (Viewmont/Woods Cross HS)
12	Stephanie Vermont Seaborn	G/F	6-0	JR	2V	Airdrie, Alberta, Canada (Bert Church HS)
15	Kylie Maeda	G	5-5	FR	HS	Honolulu, Hawai'i (Iolani HS)
21	Lexi Eaton+	G/F	5-10	SO	1V	Mapleton, Utah (Springville HS)
22	Kristine Fuller#	G	5-11	FR	HS	Crystal Beach, Fla. (Palm Harbor University HS)
23	Makenzi Morrison#	G	5-8	FR	HS	Draper, Utah (Alta HS)
30	Kylie Brown*	G	5-7	SO	1V	Grangeville, Idaho (Grangeville HS)
33	Haley Steed	G	5-4	GS	4V	Syracuse, Utah (Clearfield HS)
34	Micaelee Orton#	F	6-2	FR	HS	Kearns, Utah (Kearns HS)
41	Morgan Bailey	F	6-2	SO	1V	Orem, Utah (Timpanogos HS)
45	Keilani Unga	F	6-2	SR	3V	Warrenville, Ill. (Weaton Warrenville HS)
50	Brooke Romney*	F	6-1	FR	HS	Dallas, Texas (Woodrow Wilson/ASFM HS)

- + Suffered season-ending cartilage injury to left knee in practice
- + Suffered season-ending ACL injury to right knee in the home game vs. Utah State
- # Will redshirt the 2012-13 season
- * Denotes walk-on for 2012-13 season

Head Coach: Jeff Judkins (Utah 1978) – 12th Season

Assistant Coaches: Chris Boettcher, Melinda Bendall, Ray Stewart

Director of Basketball Operations: Wendy Anae

Athletic Trainer: Jaime Carpenter

PRONUNCIATION GUIDE

- No. 11 Xojian Harry (Zoh-Zohn)
- No. 15 Kylie Maeda (Mah-eh-dah)
- No. 34 Micaelee Orton (Mah-kay-lee)
- No. 45 Keilani Unga (Kay-law-nee Oon-gah)

Co-Team Captains

Graduate student Haley Steed and senior Keilani Unga have been chosen by their teammates as co-captains for the 2012-13 season. This is Steed's fifth straight co-captain selection.

Player Injury Report

- Sophomore guard Lexi Eaton suffered a season-ending ACL injury to her right knee during the home game vs. Utah State. She will not return to play this year. Eaton had scored in double figures in the first eight games of the season.
- Sophomore guard Stephanie Rovetti suffered a cartilage injury to her left knee in a team practice. She will not be able to play this season.

2012-13 BYU Starting Lineup

Starters	Record
Beeston, Eaton, Steed, Bailey, Unga	3-2
Beeston, Eaton, Steed, Garfield, Unga	0-1
Beeston, Eaton, Steed, Hamson, Unga	1-0
Beeston, Eaton, Steed, Seaborn, Unga	0-1
Beeston, Harry, Steed, Bailey, Unga	2-0
Beeston, Harry, Steed, Hamson, Unga	6-1
Beeston, Seaborn, Steed, Hamson, Unga	7-3*

*Indicates most recent starting lineup

BYU Capsule

Entering the last week of West Coast Conference action, BYU women's basketball finishes league play with two road games. The Cougar women (19-8, 10-4) are in third place in the latest conference standings, one game behind San Diego. BYU is in Los Angeles Thursday night battling LMU (10-17, 4-10) in a 7 p.m. PST tip off. The Lions are in seventh place in league play.

On Saturday BYU travels to the northwest to take on league foe Portland (10-17, 5-9) who is in sixth place entering this week's final games. The contest between the Cougars and the Pilots tips off at 2 p.m. PST and airs live on BYU Radio.

The Cougar team has outrebounded its opponents in 17 of the 27 games played. The BYU bench has outscored the opponent's bench 503-344. When comparing points in the paint, the Cougars have scored 712 points to 568 from opponents.

BYU has had a halftime lead in all but seven games to date (vs. Gonzaga, vs. SD, vs. SMC, at USF, at Gonzaga, vs. Seattle and at Washington State).

In only five contests (vs. Gonzaga, at USF, at Gonzaga, at Boston College and at Washington State) the Cougars did not record more assists than their opponents.

Balanced scoring has added to the team's success this year.

To date, three players have put up double figures in points in 12 games and four players finished with double-digit scoring in four games (at PEP, vs. PEP, vs. Tulsa, vs. UCSB)

- Head coach: Jeff Judkins (Utah, '78), enters his 12th season
- Team's leading scorer: #33 Haley Steed, 10.7 ppg
- Team's leading rebounder: #5 Jennifer Hamson, 7.9 rpg
- Team's assists leader: #33 Steed, 7.8 apg
- Team's steals leader: #33 Steed, 2.2 spg

LMU Capsule

In seventh place in the latest WCC standings with a 4-10 mark, LMU has recorded league victories over San Francisco, Santa Clara and swept the series vs. Pepperdine. LMU returns 10 letterwinners including three starters. At home, the Lions are 3-4 in league action. They are coming off a 70-57 loss at Saint Mary's.

- Head coach: Charity Elliott is in her first season at LMU
- Team's leading scorer: #3 Alex Cowling, 15.4 ppg
- Team's leading rebounder: #35 Mackenzie Kerins, 7.5 rpg
- Team's assists leader: #4 Hazel Ramirez, 4.9 apg
- Team's steals leader: #3 Cowling, 2.0 spg

Series History

BYU leads the series 5-0.

Last Meeting

In the first game between these two conference foes on Jan. 24 in Provo, the Cougars picked up the 74-53 win. In the contest three players scored in double figures led by 15 from Kim Parker Beeston, all from behind the arc. Jennifer Hamson and Morgan Bailey each scored 10 points in the winning effort with Beeston pulling down a game-best nine rebounds. Teammate Haley Steed dished out a season-best 13 assists. BYU shot 50 percent from the field and held LMU to 33 percent shooting from the field. The Cougars outrebounded the Lions 46-28 and scored 38 points in the paint to LMU's 18.

USA TODAY/ESPN Top 25 Coaches Poll Feb. 26, 2013

Rank	School (Record)
1.	Baylor (27-1)
2.	Notre Dame (25-1)
3.	Connecticut (25-2)
4.	Duke (26-1)
5.	Stanford (26-2)
6.	California (25-2)
7.	Penn State (23-3)
8.	Tennessee (22-5)
9.	Maryland (22-5)
10.	Kentucky (23-4)
11.	Georgia (23-4)
12.	Dayton (24-1)
13.	South Carolina (22-5)
14.	Louisville (22-6)
15.	Texas A&M (21-7)
16.	UCLA (21-6)
17.	North Carolina (25-4)
18.	Delaware (24-3)
19.	Colorado (22-5)
20.	Syracuse (22-4)
21.	Iowa State (19-6)
22.	Purdue (20-7)
23.	Wisconsin-Green Bay (22-2)
24.	Florida State (20-7)
25.	Nebraska (21-6)

Receiving Votes: Gonzaga (1)*

* Denotes BYU Opponent

Poll Watching

Last year the Cougars began receiving votes in December and were ranked as high as No. 23 in February.

2012-13 NCAA Ranking Summary - (2/25/13)

Category - Team	Rank
Assists Per Game	12th
Assist Turnover Ratio	20th
3-point FG's Per Game	31st
3-point FG Percentage	35th

Category - Player

Assists Per Game - H. Steed	1st
Assist Turnover Ratio - H. Steed	2nd

BYU RECORDS

2012-13 BYU Records When...

BYU leads at the half.....	16-4
Opponent leads at the half.....	3-4
Score is tied at the half.....	0-0
Games goes into overtime.....	1-1
BYU shoots 50% or better.....	3-0
Opponent shoots 50% or better.....	1-2
BYU makes five or more 3-pointers.....	16-5
Opponent makes five or more 3-pointers.....	3-4
BYU outrebounds opponent.....	14-2
Opponent outrebounds BYU.....	5-5
Rebounds are equal.....	0-0
BYU has 16 and under turnovers.....	13-5
Opponent has 16 and under turnovers.....	12-7
BYU has 17-20 turnovers.....	4-2
Opponent has 17-20 turnovers.....	4-1
BYU has more than 20 turnovers.....	2-1
Opponent has more than 20 turnovers.....	3-0
BYU dishes out more assists.....	20-2
Opponent dishes out more assists.....	0-5
BYU has more blocks.....	18-3
Opponent has more blocks.....	0-4
BYU records more steals.....	9-2
Opponent records more steals.....	6-7
In November.....	3-4
In December.....	6-0
In January.....	5-2
In February.....	5-2
In March.....	0-0
In April.....	0-0
Last five games.....	3-2
Longest win streak.....	9-0
Playing on Monday.....	0-0
Playing on Tuesday.....	4-0
Playing on Wednesday.....	0-1
Playing on Thursday.....	7-2
Playing on Friday.....	1-1
Playing on Saturday.....	7-4
Facing ranked opponents.....	0-0
Facing unranked opponents.....	0-0

2012-13 BYU TEAM HIGHS

POINTS	
(81)..... vs. Utah St. (12/4)	FG PERCENTAGE
	(.600)..... vs. Seattle (12/20)
REBOUNDS	
(49)..... vs. USF (1/5)	3-PT FG PERCENTAGE
at PEP (2/16)	(.471)..... at San Diego (1/10)
3-POINTERS	
(13)..... vs. Utah St. (12/4)	FT PERCENTAGE
	(1.000)..... vs. USF (1/5)
ASSISTS	
(26)..... vs. USF (1/5)	
BLOCKS	
(10)..... vs. POR (2/21)	
STEALS	
(12)..... at San Diego (1/10)	

2012-13 BYU INDIVIDUAL HIGHS

POINTS

(24).....	L. Eaton vs. Web. St. (11/9)
(23), 1 more.....	J. Hamson vs. Portland (2/21)
(23).....	H. Steed vs. Portland (2/21)
(22), 1 more, last.....	H. Steed at Utah (12/8)
(20).....	J. Hamson vs. GON (2/23)
(19).....	H. Steed at USF (1/26)
(19).....	K. Beeston at Harvard (11/16)
(19).....	L. Eaton at Dartmouth (11/13)
(18).....	L. Eaton vs. Creighton (11/28)
(18), 2 more, last.....	H. Steed at SMC (2/9)
(18).....	M. Bailey at GON (1/17)
(17).....	K. Unga vs. San Diego (2/7)
(17).....	H. Steed at Santa Clara (2/2)
(16).....	K. Beeston at Pepperdine (2/16)
(16).....	S. Seaborn at San Diego (1/10)

REBOUNDS

(16).....	J. Hamson vs. Santa Clara (2/14)
(16).....	A. Garfield vs. Utah St. (12/4)
(14).....	J. Hamson at Arizona (11/20)
(12).....	J. Hamson vs. Tulsa (12/15)
(13).....	M. Bailey vs. USF (1/5)
(10).....	A. Garfield vs. USF (1/5)
(10).....	M. Bailey at Dartmouth (11/13)
(9), 2 more, last.....	K. Beeston at PEP (2/16)
(9), 4 more, last.....	J. Hamson vs. Port. (2/21)
(9).....	M. Bailey vs. Utah St. (12/4)
(9).....	L. Eaton vs. Creighton (11/28)
(9), 2 more, last.....	K. Unga at PEP (2/16)
(8).....	A. Garfield at USF (1/26)
(8), 2 more, last.....	J. Hamson vs. GON (2/23)
(8), 1 more, last.....	M. Bailey at PEP (2/16)
(8).....	K. Beeston at WashingtonSt. (11/24)
(7).....	K. Unga at Santa Clara (2/2)
(7).....	A. Garfield at GON (1/17)
(7).....	M. Bailey vs. Web. St. (11/9)
(7), 1 more, last.....	K. Beeston at SMC (2/9)

3-POINTERS

(6), 1 more, last.....	H. Steed at SMC (2/9)
(5), 2 more, last.....	K. Beeston at PEP (2/16)
(5).....	H. Steed vs. Portland (2/21)
(4).....	K. Beeston vs. West.N.M. (12/29)
(4), 1 more, last.....	H. Steed vs. SMC (1/31)
(3), 1 more, last.....	S. Seaborn at SMC (2/9)
(3), 3 more, last.....	K. Beeston vs. PEP (1/12)

ASSISTS

(13).....	H. Steed vs. LMU (1/24)
(12), 1 more, last.....	H. Steed vs. Utah St. (12/4)
(11).....	H. Steed vs. UCSB (12/18)
(10), 1 more.....	H. Steed vs. Santa Clara (2/14)
(9), 4 more, last.....	H. Steed vs. GON(2/23)
(8), 2 more, last.....	H. Steed vs. USF(1/5)
(8).....	K. Beeston vs. USF (1/5)
(7), 4 more, last.....	H. Steed vs. Port. (2/21)

BLOCKS

(5), 3 more, last.....	J. Hamson vs. PEP (1/12)
(4), 1 more, last.....	J. Hamson vs. GON (2/23)
(3).....	J. Hamson at PEP (2/16)
(3).....	M. Bailey vs. Port. (2/21)

STEALS

(5), 2 more, last.....	H. Steed vs. SMC (1/31)
(4), 2 more, last.....	H. Steed at SCU(2/2)
(4).....	K. Maeda vs. Web. St. (11/9)
(3).....	H. Steed vs. Santa Clara (2/14)
(3), 1 more, last.....	K. Beeston vs. USF (1/5)
(3).....	X. Harry vs. Creighton (11/28)
(3).....	K. Unga at Dartmouth (11/13)

TRACKING CAREER RECORDS (as of 2/25/13)

Assists	Blocks
1. Haley Steed - 770 (2006-present)	1. Tresa Spaulding Hamson-494 (1983-87)
Steals	2. Debbie Dimond - 199 (1991-95)
1T. Valerie Cravens - 323 (1980-84)	3. Jennifer Hamson - 171 (2010-present)
1T. Kathy Denton - 323 (1981-1985)	1,000-Point Club
3. Jackie Beene McBride - 293 (1978-82)	2. Tresa Spaulding Hamson - 2,309 (1983-87)
4. Haley Steed - 278 (2006-present)	15. Mindy Nielson Bonham - 1,322 (2007-11)
3-pointers	16. Ambrosia Anderson - 1,285 (2002-06)
1. Erin Thorn - 391 (1999-03)	17. Haley Steed - 1,220 (2006-present)
2. Mallary Gillespie Carling - 294 (2004-08)	Games Played
3. Haley Steed - 250 (2006-present)	1. Haley Steed - 136 (2006-present)

WEST COAST CONFERENCE INFO

Current WCC Standings - 2/25/13

Place	Team	Conference	Overall
1.	Gonzaga	14-1	24-5
2.	San Diego	11-4	19-8
3.	BYU	10-4	19-8
4.	Saint Mary's	10-4	18-8
5.	Santa Clara	6-8	14-13
6.	Portland	5-9	10-17
7.	Loyola Marymount	4-10	10-17
8.	San Francisco	3-11	10-17
9.	Pepperdine	1-13	4-21

2012-13 WCC Team Stats - 2/25/13

Team Stats	All	Conf
Scoring Offense	5th	3rd
Scoring Defense	2nd	same
Scoring Margin	2nd	same
Free Throw %	3rd	6th
Field Goal %	3rd	same
Field Goal % Defense	1st	same
3-Point FG %	2nd	same
3-Point FG % Defense	1st	same
Rebounding Offense	5th	4th
Rebounding Defense	4th	same
Rebounding Margin	4th	same
Blocked Shots	2nd	1st
Assists	1st	2nd
Steals	8th	9th
Turnover Margin	6th	8th
Assist/Turnover Ratio	2nd	same
Offensive Rebounds	8th	same
Defensive Rebounds	2nd	1st
Defensive Reb. %	1st	3rd
Offensive Reb. %	7th	6th
3-Point FG Made	1st	same

2012-13 WCC Ind. Stats - 2/25/13

Ind. Overall Stats	Player/Place
Scoring	Steed/13th
	Beeston/19th
	Bailey/24th
	Unga/29th
Rebounding	Bailey/14th
	Garfield/18th
Field Goal Percentage	Bailey/4th
Assists	Steed/1st
Steals	Steed/5thT
3-Point Field Goal Percentage	Steed/3rd
	Beeston/4th
	Seaborn/14th
3-Point Field Goals Made	Steed/1st
	Beeston/4th
	Seaborn/11thT
Blocked Shots	Bailey/7th
	Unga/15thT
Assist/Turnover Ratio	Steed/1st
Defensive Rebounds	Bailey/12th

2012-13 WCC Ind. Stats - 2/25/13

Ind. Conference Stats	Player/Place
Scoring	Steed/9th
	Beeston/20th
	Hamson/23rd
	Unga/24thT
	Bailey/29th
Rebounding	Hamson/7th
	Bailey/17th
	Garfield/18th
Field Goal Percentage	Unga/1st
	Hamson/5th
	Bailey/9th
	Steed/14th
Assists	Steed/1st
	Beeston/13th
Steals	Steed/2nd
3-Point Field Goal Percentage	Steed/3rd
	Beeston/9th
	Seaborn/12th
3-Point Field Goals Made	Steed/2nd
	Beeston/3rd
	Seaborn/10thT
Blocked Shots	Hamson/1st
	Unga/6thT
	Bailey/6thT
Assist/Turnover Ratio	Steed/1st
Offensive Rebounds	Hamson/14th
Defensive Rebounds	Hamson/3rd
	Bailey/15th

2012-13 WCC PRESEASON POLL

Preseason Coaches' Poll

Place	Team	Points
1.	Brigham Young Univ. (5)	61
2.	Gonzaga (4)	60
3.	Saint Mary's	48
4.	Univ. of San Diego	36
5.	Pepperdine	33
6.	Santa Clara	27
7.	Loyola Marymount	25
8.	Portland	24
9.	San Francisco	10

Preseason All-WCC Team

Player (Yr.)	School	Pos.
Alex Cowling (Sr.)	LMU	G/F
Lexi Eaton (So.)	BYU	G
Megan Fulps (Sr.)	SCU	G
Jennifer Hamson (Jr.)	BYU	C
Amy Kame (Jr.)	SD	G
Taelor Karr (Sr.)	GON	G
Danielle Maulding (Jr.)	SMC	F
Jackie Nared (Jr.)	SMC	G
Haiden Palmer (Jr.)	GON	G
Haley Steed (Gr.)	BYU	G

HEAD COACH JEFF JUDKINS

Overall Record: 250-123/11

2012-13: 19-8, 10-4

2011-12: 26-7, 12-4/T2nd



Career Achievements

- Six 20-plus win seasons – most wins (26) twice in 2005-06 and in 2011-12
- Five NCAA Tournament appearances - best finish, Sweet Sixteen 2001-02, most recent 2012 First Round
- Three WNIT postseason tournament appearances – best finish, Quarterfinal Round (Elite Eight) 2010-11
- Three conference coach of the year awards – 2010-11, 2006-07, 2005-06 - MWC
- Two conference regular season titles – MWC (2005-06 and 2006-07)
- Two conference tournament crowns – MWC (2001-02); WCC (2011-12)
- Coached three All-Americans – Erin Thorn, Ambrosia Anderson, Kristen Riley
- Coached three conference players of the year – Ambrosia Anderson, Dani Kubik Wright, Kristen Riley
- Coached one conference defensive player of the year –Mindy Bonham
- Coached two conference sixth player of the year – Coriann Fraughton, Kristen Riley
- Became BYU's women's basketball all-time winningest coach with his 220th career win when the Cougars defeated Pepperdine, 80-56 on Jan. 12, 2012

Coaching Experience

- Assistant Coach (men) – University of Utah (1989-99)
- Assistant Coach (women)– BYU (2000-01)

Playing Career

- NBA with Boston Celtics, Portland Trailblazers, Detroit Pistons, Utah Jazz – Drafted in the second round by the Boston Celtics in 1978, the same year the Celtics selected Larry Bird with the sixth pick overall
- University of Utah – 1974-78 leading Utah to one conference championship and two berths in the NCAA tournament
- While at Utah was a second team Academic All-American, a three-time District VII academic selection and a three-time First Team All-WAC honoree
- Member of the 1977 United States World Games team that captured the gold medal

Education

University of Utah - Physical and Health Education bachelor's degree, 1978

Personal

- Married to Mary Kay
- Has five children and four grandchildren

Judkins Coaching Record			
School	Yrs.	Rec.	Postseason
BYU	2001-02	24-9	NCAA Sweet 16
BYU	2002-03	19-12	NCAA 1st Round
BYU	2003-04	15-14	DNC
BYU	2004-05	19-11	WNIT 1st Round
BYU	2005-06	26-6	NCAA 2nd Round
BYU	2006-07	23-10	NCAA 1st Round
BYU	2007-08	13-16	DNC
BYU	2008-09	18-11	DNC
BYU	2009-10	23-10	WNIT Quarterfinals
BYU	2010-11	25-9	WNIT Third Round
BYU	2011-12	26-7	NCAA 1st Round
Record:		231-115 (.668)	

**2 — STEPHANIE ROVETTI**

5-6 • SOPHOMORE • GUARD • RENO, NEVADA (RENO HS)

In 2012-13

- Suffered season-ending cartilage injury to left knee in practice

In 2011-12

- Played in 31 of the 33 total games
- Averaged 7.5 minutes of playing time
- Posted season highs of 12 points, 6 rebounds, 4 assists and 4 steals
- Averaged 2.4 points per game
- Shot 45 percent from the field and 76 percent from the free throw line
- Recorded her first ever double figure game with 12 points at Tulsa on 11/14/11

2011-12 SEASON HIGHS

PTS	12, at Tulsa – 11/11/11
REB	6, at BYU-H – 11/29/11
AST	4, vs. SUU – 12/8/11
STL	4, vs. SUU – 12/8/11
BLK	—
FGM	4, at Seattle U – 1/25/12
FGA	4, three, last at Seattle U - 1/25/12
3PM	—
3PA	1, three, last vs. Portland – 1/21/12
FTM	8, twice, last vs. SUU – 12/8/11
FTA	10, at Tulsa – 11/11/11

In 2010-11

- Redshirt

Personal

- Parents are David and Diana
- Has one brother and three sisters
- Sister Morgan played on the BYU Rugby Team and the U-20 Women's National Rugby Team
- Majoring in dietetics

CAREER HIGHS

PTS	12, at Tulsa – 11/11/11
REB	6, at BYU-H – 11/29/11
AST	4, vs. SUU – 12/8/11
STL	4, vs. SUU – 12/8/11
BLK	—
FGM	4, at Seattle U – 1/25/12
FGA	4, three, last at Seattle U - 1/25/12
3PM	—
3PA	1, three, last vs. Portland – 1/21/12
FTM	8, twice, last vs. SUU – 12/8/11
FTA	10, at Tulsa – 11/11/11

MISCELLANEOUS

	11-12	Career
Double-Figure PTS	1	1
10-plus Pts	1	1
Double-Doubles	0	0
3-plus AST	4	4
3-plus STL	3	3
3-plus 3-point FG	0	0
Scoring Leader	0	0
Rebound Leader	0	0
Assist Leader	0	0

ROVETTI CAREER STATISTICS (ALL GAMES)

Year	GP	GS	Min	Avg	FG	FGA	Pct	3FG	FGA	Pct	FT	FTA	Pct	Off	Def	TR	Avg	PF	FO	A	TO	Blk	Stl	Pts	Avg
2011-12	31	0	233	7.5	17	38	.447	0	3	.000	41	54	.759	9	20	29	0.9	28	0	28	35	1	19	75	2.4
TOTAL	31	0	233	7.5	17	38	.447	0	3	.000	41	54	.759	9	20	29	0.9	28	0	28	35	1	19	75	2.4

ROVETTI CAREER STATISTICS (CONFERENCE GAMES)

Year	GP	GS	Min	Avg	FG	FGA	Pct	3FG	FGA	Pct	FT	FTA	Pct	Off	Def	TR	Avg	PF	FO	A	TO	Blk	Stl	Pts	Avg
2011-12	15	0	80	5.3	7	14	.500	0	1	.000	7	11	.636	2	4	6	0.4	13	0	8	11	1	4	21	1.4
TOTAL	15	0	80	5.3	7	14	.500	0	1	.000	7	11	.636	2	4	6	0.4	13	0	8	11	1	4	21	1.4

21 — LEXI EATON

5-10 • SOPHOMORE • GUARD • MAPLETON, UTAH (SPRINGVILLE HS)



In 2012-13

- Suffered season-ending ACL injury to right knee during the home game vs. Utah State
- Had team highs in points and in rebounds with 18 and 9 respectively vs. Creighton, the points mark the 7th time on the year that she's finished the game in double figure points, the rebounds were season and career bests
- Led the team in points with 13 at Washington State marking her 6th straight double figure outing in points
- Finished the game at Arizona with 12 points for her 5th straight double figure contest while going 6-for-6 from the free throw line
- Led all scorers with 17 points at Boston College while grabbing 5 boards and 3 assists
- Recorded second straight double figure outing in points at Dartmouth with 19 leading all scorers
- In the game at Dartmouth shot .833, 5-6 from the charity stripe
- Led all scorers with 24 points in the home opener vs. Weber State while dishing out 4 assists and getting 1 block

2012-13 SEASON HIGHS

PTS	24, vs. Weber State – 11/9/12
REB	9, vs. Creighton at ESA – 11/28/12
AST	4, vs. Weber State – 11/9/12
STL	1, at Arizona – 11/20/12
BLK	1, vs. Weber State – 11/9/12
FGM	9, vs. Weber State – 11/9/12
FGA	17, at Washington State – 11/24/12
3PM	2, at Dartmouth – 11/13/12
3PA	4, at Dartmouth – 11/13/12
FTM	6, twice, last vs. Creighton – 11/28/12
FTA	8, twice, last vs. Creighton – 11/28/12

In 2011-12

- Started in all 33 games as a freshman
- Team's second leading scorer averaging 10.5 points per game
- Ranked fourth in field goal percentage .458 (131-286)
- Scored in double digits in 20 games
- Named WCC Co-Newcomer of the Year and made the WCC All-Freshman Team
- Was named the Female Rookie of the Year by the Cougar Club
- In the WCC ranked seventh in field goal percentage and 18th in scoring
- Posted season highs of 26 points, 8 rebounds, 2 3-pointers, 5 assists, 4 steals and 2 blocks
- The 26 points vs. San Diego in the WCC Championships were the most scored by any BYU player on the year
- Is a dual-sport student-athlete competing as a high jumper on the women's track and field team

CAREER HIGHS

PTS	26, vs. San Diego – 3/3/12
REB	9, vs. Creighton – 11/28/12
AST	5, vs. Portland – 1/21/12
STL	4 vs. Nevada – 12/22/11
BLK	2, three, last at San Diego – 1/14/12
FGM	10, vs. San Diego – 3/3/12
FGA	20, vs. Duke – 11/11/11
3PM	3, twice, last vs. San Diego – 3/3/12
3PA	5, vs. San Diego – 3/3/12
FTM	6, three, last vs. Creighton – 11/28/12
FTA	8, twice, last vs. Creighton – 11/28/12

Personal

- Parents are Alan and Aleisa
- Has six siblings
- Majoring in psychology

MISCELLANEOUS

	12-13	Career
Double-Figure PTS	7	27
20-plus Pts	1	2
Double-Doubles	0	0
3-plus AST	3	12
3-plus STL	0	4
3-plus 3-point FG	0	2
Scoring Leader	4	9
Rebound Leader	1	1
Assist Leader	0	0

EATON CAREER STATISTICS (ALL GAMES)

Year	GP	GS	Min	Avg	FG	FGA	Pct	3FG	FGA	Pct	FT	FTA	Pct	Off	Def	TR	Avg	PF	FO	A	TO	Blk	Stl	Pts	Avg
2011-12	33	33	752	22.8	131	286	.458	21	60	.350	63	82	.768	49	52	101	3.1	67	1	60	95	13	39	346	10.5
2012-13	8	8	225	28.1	45	98	.459	5	15	.333	30	44	.682	16	16	32	4.0	19	0	13	16	3	4	125	15.6
TOTAL																									

EATON CAREER STATISTICS (CONFERENCE GAMES)

Year	GP	GS	Min	Avg	FG	FGA	Pct	3FG	FGA	Pct	FT	FTA	Pct	Off	Def	TR	Avg	PF	FO	A	TO	Blk	Stl	Pts	Avg
2011-12	16	16	371	23.2	65	139	.468	14	36	.389	32	44	.727	26	23	49	3.1	37	0	27	51	10	13	176	11.0
2012-13																									
TOTAL	16	16	371	23.2	65	139	.468	14	36	.389	32	44	.727	26	23	49	3.1	37	0	27	51	10	13	176	11.0

Walk-on Bios

**1 — CARLY STRATTON**

5-7 • FRESHMAN • GUARD • ST. GEORGE, UTAH (HURRICANE HS)

Before BYU

- Four-year letterwinner in basketball
- Two-time team captain
- Team MVP
- Three-time First Team All-Region
- Averaged 9.7 points, 5.3 rebounds, 5.0 assists and 3.7 steals her senior year
- Played on the Red Rocks Raider Basketball Club
- Four-year letterwinner in soccer garnering Region MVP and First Team All-Region
- Four-year letterwinner in softball garnering First Team All-Region honors
- Four-year Honor Roll, National Honor Society and four-time Top Scholar award

Personal

- Parents are Craig and Connie
- Has five siblings
- Born in St. George, Utah

**30 — KYLIE BROWN**

5-7 • SOPHOMORE • GUARD • GRANGEVILLE, ID (GRANGEVILLE HS)

In 2011-12

- Saw action in nine games
- Averaged 2.5 minutes of playing time
- Shot 22 percent from the field and 14 percent from 3-point range
- Scored a total of 7 points, 1 steal and 1 assist during her freshman campaign
- Played in four West Coast Conference games

Personal

- Parents are Joel and Brandy
- Has two brothers and two sisters
- Born in West Lake, California

**50 — BROOKE ROMNEY** 6-1 • FRESHMAN • FORWARD • DALLAS, TX (WOODROW WILSON & ASFM HS)**Before BYU**

- Four-year letterwinner in basketball
- Two-time Spirit Award recipient in 2011 and 2012 at ASFM
- Team captain in 2012
- Leading scorer at ASFM in 2012, averaging 15.0 points per game
- Newcomer of the Year in 2008 at Woodrow Wilson HS
- Letterwinner in volleyball, softball and track and field
- Received the Steve Fordham Award at ASFM
- Four-year Honor Roll
- National Honor Society

Personal

- Parents are Brent and Ella
- Has five siblings
- Born in Dallas, Texas

Brigham Young University
Brigham Young University Combined Team Statistics (as of Feb 23, 2013)
All games

RECORD:	OVERALL	HOME	AWAY	NEUTRAL
ALL GAMES	19-8	13-1	6-6	0-1
CONFERENCE	10-4	7-1	3-3	0-0
NON-CONFERENCE	9-4	6-0	3-3	0-1

##	Player	gp-gs	min	avg	Total		3-Point		F-Throw		Rebounds				pf	dq	a	to	blk	stl	pts	avg		
					fg-fga	fg%	3fg-fga	3fg%	ft-fa	ft%	off	def	tot	avg										
21	EATON, Lexi	8-8	225	28.1	45-98	.459	5-15	.333	30-44	.682	16	16	32	4.0	19	0	13	16	3	4	125	15.6		
33	STEED, Haley	27-27	936	34.7	101-276	.366	60-157	.382	26-30	.867	13	92	105	3.9	46	0	211	76	7	58	288	10.7		
05	HAMSON, Jennifer	19-18	452	23.8	86-167	.515	0-0	.000	25-44	.568	39	111	150	7.9	44	2	12	43	50	17	197	10.4		
04	BEESTON, Kim	27-27	821	30.4	88-227	.388	57-152	.375	36-49	.735	22	86	108	4.0	60	1	64	62	5	23	269	10.0		
41	BAILEY, Morgan	27-7	554	20.5	102-201	.507	6-10	.600	20-44	.455	35	110	145	5.4	55	1	20	39	23	17	230	8.5		
45	UNGA, Keilani	27-27	669	24.8	79-157	.503	1-4	.250	37-53	.698	37	81	118	4.4	60	0	23	54	18	14	196	7.3		
12	SEABORN, Stephanie	27-11	581	21.5	53-154	.344	35-115	.304	23-28	.821	17	53	70	2.6	28	0	41	29	1	12	164	6.1		
03	GARFIELD, Ashley	27-1	418	15.5	41-90	.456	3-13	.231	43-53	.811	43	91	134	5.0	28	0	27	28	4	12	128	4.7		
11	HARRY, Xojian	27-9	433	16.0	38-110	.345	12-51	.235	14-23	.609	8	33	41	1.5	52	1	14	23	9	14	102	3.8		
15	MAEDA, Kylie	27-0	279	10.3	13-36	.361	5-15	.333	5-6	.833	5	22	27	1.0	22	0	34	27	2	10	36	1.3		
30	BROWN, Kylie	10-0	27	2.7	2-7	.286	1-5	.200	0-0	.000	0	3	3	0.3	0	0	1	4	0	2	5	0.5		
01	STRATTON, Carly	10-0	31	3.1	1-3	.333	0-1	.000	0-0	.000	0	3	3	0.3	5	0	1	5	0	1	2	0.2		
50	ROMNEY, Brooke	9-0	24	2.7	0-4	.000	0-0	.000	0-0	.000	6	5	11	1.2	3	0	1	3	1	0	0	0.0		
Team											51	59	110											
Total.....		27	5450	649-1530		.424	185-538	.344	259-374	.693	292	765	1057	39.1	422	5	462	417	123	184	1742	64.5		
Opponents.....		27	5450	547-1543		.355	99-338	.293	317-458	.692	310	651	961	35.6	346	-	306	382	60	197	1510	55.9		

TEAM STATISTICS	BY	OPP	Date	Opponent	Score	Att.
SCORING	1742	1510	11/9/12	WEBER STATE	w 80-55	1120
Points per game	64.5	55.9	11/13/12	at Dartmouth	w 58-57	642
Scoring margin	+8.6	-	11/15/12	at Boston College	L 56-62	670
FIELD GOALS-ATT	649-1530	547-1543	11/16/12	at HARV	L 65-71	631
Field goal pct	.424	.355	11/20/12	at Arizona	w 62-48	3375
3 POINT FG-ATT	185-538	99-338	11/24/12	at Washington State	L 52-67	0
3-point FG pct	.344	.293	11/28/12	vs Creighton	Lot 62-65	325
3-pt FG made per game	6.9	3.7	12/4/12	UTAH STATE	w 81-77	449
FREE THROWS-ATT	259-374	317-458	12/08/12	at Utah	w 53-48	1925
Free throw pct	.693	.692	12/15/12	TULSA	w 70-48	439
F-Throws made per game	9.6	11.7	12/18/12	UC SANTA BARBARA	w 67-39	289
REBOUNDS	1057	961	12/20/12	SEATTLE UNIVERSITY	w 70-62	425
Rebounds per game	39.1	35.6	12/29/12	WESTERN NEW MEXICO	w 72-31	787
Rebounding margin	+3.6	-	* 01/05/13	SAN FRANCISCO	w 80-58	719
ASSISTS	462	306	* 1/10/13	at San Diego	Wot 57-54	352
Assists per game	17.1	11.3	* 1/12/13	PEPPERDINE UNIVERSIT	w 68-42	784
TURNOVERS	417	382	* 01/17/13	at GONZAGA BULLDOGS	L 59-74	6000
Turnovers per game	15.4	14.1	* 01/24/13	LOYOLA MARYMOUNT	w 72-53	854
Turnover margin	-1.3	-	* 01/26/13	at San Francisco Dons	L 56-65	557
Assist/turnover ratio	1.1	0.8	* 01/31/13	SAINT MARY'S	w 66-58	682
STEALS	184	197	* 02/02/13	at Santa Clara	w 65-48	0
Steals per game	6.8	7.3	* 02/07/13	SAN DIEGO	w 53-48	528
BLOCKS	123	60	* 02/09/13	at Saint Mary's (CA)	L 52-64	562
Blocks per game	4.6	2.2	* 02/14/13	SANTA CLARA	w 65-42	617
ATTENDANCE	9787	15251	* 2/16/13	at Pepperdine	w 67-44	212
Home games-Avg/Game	14-699	12-1244	* 02/21/13	UNIV. OF PORTLAND	w 79-64	664
Neutral site-Avg/Game	-	1-325	* 02/23/13	GONZAGA	L 55-66	1430

* = Conference game

Score by Periods	1st	2nd	OT	Totals
Brigham Young Univer	815	913	14	1742
Opponents	681	815	14	1510

Brigham Young University
Brigham Young University Combined Team Statistics (as of Feb 23, 2013)
Conference games

RECORD:	OVERALL	HOME	AWAY	NEUTRAL
ALL GAMES	10-4	7-1	3-3	0-0
CONFERENCE	10-4	7-1	3-3	0-0
NON-CONFERENCE	0-0	0-0	0-0	0-0

##	Player	gp-gs	min	Total		3-Point		F-Throw		Rebounds				pf	dq	a	to	blk	stl	pts	avg	
				fg-fga	fg%	3fg-fga	3fg%	ft-fa	ft%	off	def	tot	avg									
33	STEED, Haley	14-14	496	35.4	65-159	.409	38-86	.442	8-9	.889	6	47	53	3.8	24	0	112	36	3	30	176	12.6
04	BEESTON, Kim	14-14	425	30.4	46-123	.374	27-75	.360	16-22	.727	15	42	57	4.1	28	0	38	29	2	11	135	9.6
05	HAMSON, Jennifer	13-13	303	23.3	51-104	.490	0-0	.000	14-26	.538	25	72	97	7.5	33	2	8	32	32	13	116	8.9
45	UNGA, Keilani	14-14	340	24.3	47-83	.566	1-3	.333	26-34	.765	20	45	65	4.6	33	0	7	26	14	5	121	8.6
41	BAILEY, Morgan	14-1	284	20.3	47-105	.448	4-7	.571	10-26	.385	20	53	73	5.2	32	1	12	22	14	8	108	7.7
12	SEABORN, Stephanie	14-10	353	25.2	31-92	.337	21-66	.318	11-15	.733	6	27	33	2.4	13	0	26	17	0	7	94	6.7
03	GARFIELD, Ashley	14-0	239	17.1	25-49	.510	2-7	.286	21-26	.808	24	48	72	5.1	15	0	15	14	2	6	73	5.2
11	HARRY, Xojjan	14-4	217	15.5	19-58	.328	7-32	.219	7-12	.583	2	18	20	1.4	28	1	6	9	4	8	52	3.7
15	MAEDA, Kylie	14-0	142	10.1	7-19	.368	3-9	.333	0-0	.000	3	10	13	0.9	14	0	15	15	1	2	17	1.2
01	STRATTON, Carly	6-0	13	2.2	1-3	.333	0-1	.000	0-0	.000	0	3	3	0.5	2	0	0	2	0	0	2	0.3
30	BROWN, Kylie	5-0	7	1.4	0-2	.000	0-2	.000	0-0	.000	0	1	1	0.2	0	0	1	2	0	0	0	0.0
50	ROMNEY, Brooke	5-0	6	1.2	0-1	.000	0-0	.000	0-0	.000	2	0	2	0.4	2	0	0	1	0	0	0	0.0
Team											30	34	64				7					
Total.....		14	2825		339-798	.425	103-288	.358	113-170	.665	153	400	553	39.5	224	4	240	212	72	90	894	63.9
Opponents.....		14	2825		282-818	.345	47-179	.263	169-245	.690	176	334	510	36.4	173	-	165	174	32	84	780	55.7

TEAM STATISTICS	BY	OPP	Date	Opponent	Score	Att.
SCORING	894	780	* 01/05/13	SAN FRANCISCO	w 80-58	719
Points per game	63.9	55.7	* 1/10/13	at San Diego	Wot 57-54	352
Scoring margin	+8.1	-	* 1/12/13	PEPPERDINE UNIVERSIT	w 68-42	784
FIELD GOALS-ATT	339-798	282-818	* 01/17/13	at GONZAGA BULLDOGS	L 59-74	6000
Field goal pct	.425	.345	* 01/24/13	LOYOLA MARYMOUNT	w 72-53	854
3 POINT FG-ATT	103-288	47-179	* 01/26/13	at San Francisco Dons	L 56-65	557
3-point FG pct	.358	.263	* 01/31/13	SAINT MARY'S	w 66-58	682
3-pt FG made per game	7.4	3.4	* 02/02/13	at Santa Clara	w 65-48	0
FREE THROWS-ATT	113-170	169-245	* 02/07/13	SAN DIEGO	w 53-48	528
Free throw pct	.665	.690	* 02/09/13	at Saint Mary's (CA)	L 52-64	562
F-Throws made per game	8.1	12.1	* 02/14/13	SANTA CLARA	w 65-42	617
REBOUNDS	553	510	* 2/16/13	at Pepperdine	w 67-44	212
Rebounds per game	39.5	36.4	* 02/21/13	UNIV. OF PORTLAND	w 79-64	664
Rebounding margin	+3.1	-	* 02/23/13	GONZAGA	L 55-66	1430
ASSISTS	240	165				
Assists per game	17.1	11.8				
TURNOVERS	212	174				
Turnovers per game	15.1	12.4				
Turnover margin	-2.7	-				
Assist/turnover ratio	1.1	0.9				
STEALS	90	84				
Steals per game	6.4	6.0				
BLOCKS	72	32				
Blocks per game	5.1	2.3				
ATTENDANCE	6278	7683				
Home games-Avg/Game	8-785	6-1280				
Neutral site-Avg/Game	-	0-0				

* = Conference game

Score by Periods	1st	2nd	OT	Totals
Brigham Young Univer	385	501	8	894
Opponents	355	420	5	780

2012-2013 BYU BASKETBALL RADIO/TV ROSTER



CARLY STRATTON
FRESHMAN, 5-7, GUARD



STEPHANIE ROVETTI
SOPHOMORE, 5-6, GUARD



ASHLEY GARFIELD
SOPHOMORE, 5-11, GUARD



KIM PARKER BEESTON
JUNIOR, 5-11, GUARD



JENNIFER HAMSON
JUNIOR, 6-7, CENTER



XOJIAN HARRY
SOPHOMORE, 5-11, GUARD



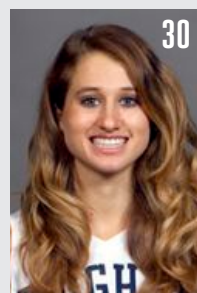
STEPHANIE SEABORN
JUNIOR, 6-0, FORWARD/GUARD



KYLIE MAEDA
FRESHMAN, 5-5, GUARD



LEXI EATON
SOPHOMORE, 6-0,
FORWARD/GUARD



KYLIE BROWN
SOPHOMORE, 5-7, GUARD



HALEY STEED
GRADUATE, 5-4, GUARD



MORGAN BAILEY
SOPHOMORE, 6-2, CENTER



KEILANI UNGA
SENIOR, 6-2, FORWARD



BROOKE ROMNEY
FRESHMAN, 6-1, FORWARD



JEFF JUDKINS
HEAD COACH



CHRIS BOETTCHER
ASSISTANT COACH



MELINDA BENDALL
ASSISTANT COACH



RAY STEWART
ASSISTANT COACH

