



# BASKETBALL

Norma Collett. BYU Athletic Communications | O: (801) 422-4908 | C: (801) 372-0989 | norma\_collett@byu.edu |

## BYU 2012-13 SCHEDULE

N1	Thu	Chadron State (Exh)	W 89-51	BYUtv
N2	Fri	Dixie State (Exh)	W 79-57	BYUtv
N9	Fri	Weber State	W 80-55	BYUtv
N13	Tue	at Dartmouth	W 58-57	BYU R
N15	Thu	at Boston College	L 56-62	BYU R
N16	Fri	at Harvard	L 65-71	BYU R
N20	Tue	at Arizona	W 62-48	BYU R
N24	Sat	at Washington State	L 52-67	
N28	Wed	Creighton*	L 62-65ot	BYUtv
D4	Tue	Utah State	W 81-77	BYUtv
D8	Sat	at Utah	W 53-48	BYU R
D15	Sat	Tulsa	W 70-48	BYUtv
D18	Tue	UC Santa Barbara	W 67-39	BYUtv
D20	Thu	Seattle University	W 70-62	BYUtv
D29	Sat	Western New Mexico	W 72-31	BYUtv
J5	Sat	San Francisco^	W 80-58	BYUtv
J10	Thu	at San Diego^	W 57-54ot	
J12	Sat	Pepperdine^	W 68-42	
J17	Thu	at Gonzaga^	L 59-74	BYU R
J24	Thu	Loyola Marymount^	W 72-53	BYUtv
J26	Sat	at San Francisco^	L 56-65	BYU R
J31	Thu	Saint Mary's^	W 66-58	BYUtv
F2	Sat	at Santa Clara^	W 65-48	BYU R
F7	Thu	San Diego^	W 53-48	BYUtv
F9	Sat	at Saint Mary's^	L 52-64	BYU R
F14	Thu	Santa Clara^	W 65-42	BYUtv
F16	Sat	at Pepperdine^	W 67-44	BYU R
F21	Thu	Portland^	W 79-64	BYUtv
F23	Sat	Gonzaga^	L 55-66	BYUtv
F28	Thu	at Loyola Marymount^	L 55-68	
M2	Sat	at Portland^	W 73-63	BYU R
M8	Wed	at WCC Champs	TBA	TBA
M8		Quarterfinal game vs. LMU	W 69-57	BYUtv
M9		Semifinal game vs. Gonzaga	L 62-43	BYUtv/R
M20	Wed	vs. ISU, WNIT 1st Rd	W 69-54	BYUtv
M23	Sat	vs. SDSU, WNIT 2nd Rd	W 69-58	BYUtv
M26	Wed	vs. SMC, WNIT 3rd Rd.	TBA	BYUtv

\*at EnergySolutions Arena

^ West Coast Conference game

BYU	CATEGORY	SMC
23-10	W-L	22-10
7-3	Last 10	6-4
4-1	Last 5	3-2
64.2	PPG	64.8
.418	FG%	.391
.349	3FG%	.326
.705	FT%	.732
39.2	RPG	42.9
16.8	Assist/Game	11.4
15.6	TO/Game	17.8
6.8	Steals/Game	6.2
4.5	Blocks/Game	3.0



## BYU (23-10) COUGARS

Head Coach.....Jeff Judkins  
Alma Mater.....Utah, 1978  
Career Record.....254-125 (12th)  
Record at BYU.....Same

## GAME INFORMATION

TV:.....BYUtv  
TV Talent: Robbie Bullough (play-by-play)  
.....Kristen Kozlowski (analyst)  
Live Video:.....byutvsports.com  
Live Stats:.....byucougars.com



## SAINT MARY'S (22-10) GAELS

Head Coach.....Paul Thomas  
Alma Mater.....Wayne St. College '88  
Career Record.....352-248  
Record at SMC.....119-90

## SERIES HISTORY

**SAINT MARY'S**  
Series is tied.....2-2  
BYU at home.....2-0  
BYU in Moraga.....0-2  
BYU in Neutral Site.....n/a  
BYU under Judkins.....2-2  
Last Meeting...SMC won 64-52 on 2/9/13

## BYU STORYLINES

- BYU has outrebounded its opponents in 21 of the 33 games played, last time vs. SDSU
- In all but 5 gms.(vs. GON, at USF, at GON, at Boston Co. & at Wash. St.) BYU dished out more assists than its opponents
- BYU has been ahead at halftime in all but 8 games (vs. GON @WCC Champs.,vs. GON vs. SD, vs. SMC, at USF, at GON, vs. Seattle & at Wash.St.)
- In 6 gms., 4 players score in double digits (vs. SDSU, at POR, at PEP, vs. PEP, vs.Tulsa & vs. UCSB)
- In 13 of the 33 games played, BYU has had 3 players score in double digits

## BYU PROJECTED STARTING LINEUP



**#33 | Haley Steed**  
Guard | 5-4 | GS.  
Syracuse, UT  
Clearfield HS

GP/GS	MPG	Pts	Reb	Ast	Stl	FG%	3PT%	FT%
33/33	35.5	10.6	4.2	7.4	2.2	.359	.370	.857

**Last Game:** Played all 40 minutes contributing 13 points, 5 rebounds, a team-best 6 assists and 3 steals

**Notes:** Has most assists and steals with 245 and 71 respectively ... has best free throw percentage .857 (36-42) and 2nd best 3-point field goal percentage .370 (71-192)



**#4 | Kim Parker**  
Beeston  
Guard | 5-11 | Jr.  
Heber City, UT  
Wasatch HS

GP/GS	MPG	Pts	Reb	Ast	Stl	FG%	3PT%	FT%
33/33	31.1	10.0	4.0	2.4	1.0	.391	.385	.758

**Last Game:** Tied for game highs in points with 17 to go along with 4 rebounds and was perfect from the charity stripe, going 6 for 6

**Notes:** Has most 3-pointers on the team with 72 ... ranks 1st in 3-point field goal percentage .385 (72-187) ... is 2nd on the team in assists (74) and steals (32)



**#12 | Stephanie V. Seaborn**  
G/F | 6-0 | Jr.  
Airdrie, Alb. CAN  
Bert Church HS

GP/GS	MPG	Pts	Reb	Ast	Stl	FG%	3PT%	FT%
33/17	22.9	6.9	2.8	1.7	0.5	.356	.329	.818

**Last Game:** Scored 12 points (9 from 3-point range), pulled down 3 assists, dished out 4 assists had 1 block and 1 steal

**Notes:** Has team's 2nd best free throw percentage .818 (27-33) ... ranks third in assists with 57



**#5 | Jennifer Hamson**  
Center | 6-7 | Jr.  
London, UT  
Pleasant Grove HS

GP/GS	MPG	Pts	Reb	Ast	Stl	FG%	3PT%	FT%
25/24	25.2	11.1	8.7	0.7	0.8	.509	.000	.639

**Last Game:** Recorded double-double with game and career highs in rebounds with 17 along with 10 points, 2 assists and a game-high 5 blocks

**Notes:** Has scored in double figures in 16 of the 24 games she's played in ... has most blocks (66) and rebounds (217) ... has best field goal percentage at .509 (116-228)



**#45 | Keilani Unga**  
Forward | 6-2 | Sr.  
Warrenville, IL  
Weaton Warrenville HS

GP/GS	MPG	Pts	Reb	Ast	Stl	FG%	3PT%	FT%
33/33	25.1	7.3	4.6	1.1	0.5	.490	.200	.727

**Last Game:** Tallied 8 points, dished out 4 assists, grabbed 4 rebounds and had 1 block

**Notes:** Selected team co-captain ... ties for 3rd on team in rebounding with a 4.6 average ... has 3rd most blocks with 20 ... has 3rd best field goal percentage at .490 (96-196)

## OFF THE BYU BENCH

No.	Name	Pos.	Ht.	Yr.	Pts.	Reb.	Hometown (Previous School)	Notes
2	Stephanie Rovetti	G	5-6	So.	2.4	0.9	Reno, NV (Reno HS)	Suffered season ending injury to left knee
3	Ashley Garfield	G	5-11	So.	4.4	4.6	Morgan, UT (Morgan HS)	3rd in rebounds 4.6 rpg, 1 double-double
11	Xojian Harry	G	5-11	So.	3.3	1.5	Bountiful, UT (Woods Cross HS)	Averages 15.5 minutes of playing time
15	Kylie Maeda	G	5-5	Fr.	1.5	1.0	Honolulu, HI (Iolani HS)	Played in 28 games, 4th in assists
21	Lexi Eaton	G	5-10	So.	15.6	4.0	Mapleton, UT (Springville HS)	Season-ending ACL to right knee vs. USU
30	Kylie Brown	G	5-7	So.	0.5	0.3	Grangeville, ID (Grangeville HS)	Played in 11 games, last vs. Idaho State
41	Morgan Bailey	F	6-2	So.	7.9	5.0	Orem, UT (Timpanogos HS)	2nd in rebounds 5.0, 2 double-doubles
01	Carly Stratton	G	5-7	Fr.	0.2	0.2	St. George, UT (Hurricane HS)	Played in 14 games, last vs. San Diego State
50	Brooke Romney	F	6-1	Fr.	0.0	1.1	Dallas, TX (Woodrow Wilson/ASFM)	Played in 10 games, last vs. Idaho State

**UNIVERSITY INFORMATION**

Location . . . . . Provo, Utah 84602  
 Elevation. . . . . 4,553 feet  
 Enrollment . . . . . 33,278  
 Founded. . . . . October 15, 1875  
 Owned. . . . . LDS Church  
 Nickname. . . . . Cougars  
 Mascot. . . . . Cosmo the Cougar  
 Colors . . . . . Dark blue and white  
 Conference . . . . . West Coast Conference  
 Arena . . . . . Marriott Center (20,900)  
 BYU President . . . . . Cecil O. Samuelson (Utah, 1970)  
 Athletic Director . . . . . Tom Holmoe (BYU, 1983)  
 Head Coach. . . . . Jeff Judkins (Utah, 1978)  
 Office Phone . . . . . 801-422-8035  
 Assist. Coaches . . . . . Chris Boettcher (BYU, 1994)  
 . . . . . Melinda Bendall (BYU, 2007)  
 . . . . . Ray Stewart (UJU, 2000)  
 Judkins Record at BYU . . . . . 254125  
 2011-12 Record . . . . . 26-7  
 2011-12 WCC Record . . . . . 12-4, T2nd  
 2011-12 NCAA . . . . . First Round  
 2011-12 Final Ranking . . . . . n/a  
 Starters Returning/Lost . . . . . 3/2  
 Letterwinners Returning/Lost . . . . . 10/4  
 Newcomers . . . . . 4

**RETURNING STARTERS (3)**

Kim Parker Beeston	Jr.	9.5 ppg	3.1 rpg
Lexi Eaton	So.	10.5 ppg	3.1 rpg
Haley Steed	GS.	8.8 ppg	4.8 rpg

**STARTERS LOST (2)**

Dani Peterson	Sr.	4.0 ppg	3.1 rpg
Kristen Riley	Sr.	8.9 ppg	5.4 rpg

**RETURNING LETTERWINNERS (10)**

Morgan Bailey	So.	1.8 ppg	1.4 rpg
Kim Parker Beeston	Jr.	9.5 ppg	3.1 rpg
Lexi Eaton	So.	10.5 ppg	3.1 rpg
Ashley Garfield	So.	2.0 ppg	1.0 rpg
Jennifer Hamson	Jr.	9.5 ppg	5.7 rpg
Xojjian Harry	So.	2.3 ppg	0.6 rpg
Stephanie Rovetti	So.	2.4 ppg	0.4 rpg
Stephanie Vermunt Seaborn	Jr.	6.5 ppg	2.2 rpg
Haley Steed	GS.	8.8 ppg	4.8 rpg
Keilani Unga	Sr.	4.4 ppg	2.2 rpg*

\* Stats are from the 2009-10 season

**LETTERWINNERS LOST (4)**

Alexis Kaufusi	1.3 ppg	1.1 rpg
Mackenzie Nielson	1.8 ppg	1.4 rpg
Dani Peterson	4.0 ppg	3.1 rpg
Kristen Riley	8.9 ppg	5.4 rpg

**NEWCOMERS (4)**

Kristine Fuller	5-11 Fr.	G
Kylie Maeda	5-5 Fr.	G
Makenzi Morrison	5-8 Fr.	G
Micaelee Orton	6-2 Fr.	F

**2012 -13 BYU BASKETBALL ROSTER**

**2012-13 NUMERICAL ROSTER**

No.	Name	Pos.	Ht.	Cl.	Exp.	Hometown (Previous School)
1	Carley Stratton*	G	5-7	FR	HS	St. George, Utah (Hurricane HS)
2	Stephanie Rovetti+	G	5-6	SO	1V	Reno, Nev. (Reno HS)
3	Ashley Garfield	G	5-11	SO	1V	Morgan, Utah (Morgan HS)
4	Kim Parker Beeston	G	5-11	JR	2V	Heber City, Utah (Wasatch HS)
5	Jennifer Hamson	C	6-7	JR	2V	Lindon, Utah (Pleasant Grove HS)
11	Xojjian Harry	G	5-11	SO	1V	Bountiful, Utah (Viewmont/Woods Cross HS)
12	Stephanie Vermunt Seaborn	G/F	6-0	JR	2V	Airdrie, Alberta, Canada (Bert Church HS)
15	Kylie Maeda	G	5-5	FR	HS	Honolulu, Hawaii (Iolani HS)
21	Lexi Eaton+	G/F	5-10	SO	1V	Mapleton, Utah (Springville HS)
22	Kristine Fuller#	G	5-11	FR	HS	Crystal Beach, Fla. (Palm Harbor University HS)
23	Makenzi Morrison#	G	5-8	FR	HS	Draper, Utah (Alta HS)
30	Kylie Brown*	G	5-7	SO	1V	Grangeville, Idaho (Grangeville HS)
33	Haley Steed	G	5-4	GS	4V	Syracuse, Utah (Clearfield HS)
34	Micaelee Orton#	F	6-2	FR	HS	Kearns, Utah (Kearns HS)
41	Morgan Bailey	F	6-2	SO	1V	Orem, Utah (Timpanogos HS)
45	Keilani Unga	F	6-2	SR	3V	Warrenville, Ill. (Weaton Warrenville HS)
50	Brooke Romney*	F	6-1	FR	HS	Dallas, Texas (Woodrow Wilson/ASFM HS)

+ Suffered season-ending cartilage injury to left knee in practice  
 + Suffered season-ending ACL injury to right knee in the home game vs. Utah State  
 # Will redshirt the 2012-13 season  
 \* Denotes walk-on for 2012-13 season

**Head Coach:** Jeff Judkins (Utah 1978) – 12th Season

**Assistant Coaches:** Chris Boettcher, Melinda Bendall, Ray Stewart

**Director of Basketball Operations:** Wendy Anae

**Athletic Trainer:** Jaime Carpenter

**Team Manager:** Mackenzie Nielson

**PRONUNCIATION GUIDE**

- No. 11 Xojjian Harry (Zoh-Zohn)
- No. 15 Kylie Maeda (Mah-eh-dah)
- No. 34 Micaelee Orton (Mah-kay-lee)
- No. 45 Keilani Unga (Kay-law-nee Oon-gah)

**Co-Team Captains**

Graduate student Haley Steed and senior Keilani Unga have been chosen by their teammates as co-captains for the 2012-13 season. This is Steed's fifth straight co-captain selection.

**Player Injury Report**

- Freshman point guard Kylie Maeda injured her right knee in the road game at LMU. She is out the rest of the season. Maeda had played in all games averaging 1.5 ppg, 1.0 rpg and ranked fourth in assists with 35.
- Sophomore guard Lexi Eaton suffered a season-ending ACL injury to her right knee during the home game vs. Utah State. She will not return to play this year. Eaton had scored in double figures in the first eight games of the season.
- Sophomore guard Stephanie Rovetti suffered a cartilage injury to her left knee in a team practice. She will not be able to play this season.

**2012-13 BYU Starting Lineup**

Starters	Record
Beeston, Eaton, Steed, Bailey, Unga	3-2
Beeston, Eaton, Steed, Garfield, Unga	0-1
Beeston, Eaton, Steed, Hamson, Unga	1-0
Beeston, Eaton, Steed, Seaborn, Unga	0-1
Beeston, Harry, Steed, Bailey, Unga	2-0
Beeston, Harry, Steed, Hamson, Unga	6-1
Beeston, Seaborn, Steed, Hamson, Unga	12-4*

\*Indicates most recent starting lineup

## 2013 WNIT

The Women's National Invitation Tournament consists of 64 Division I women's basketball teams who compete at participating schools including the semifinals and the championships. Every round is single elimination.

The Postseason WNIT features 32 first-round games, followed by 16 second-round games, eight third-round games, four quarterfinal games, two semifinal games and the championship. All games are played at campus sites. The title game is scheduled for Saturday, April 6 and will air live on CBS Sports Network.

BYU along with San Diego and Saint Mary's are the three teams from the West Coast Conference who received invitations to play in this year's WNIT. The Toreros were the automatic qualifier from the league, while the Cougars and Gaels received at-large berths.

In the WNIT, the Cougars have compiled an 8-6 overall record in six appearances.

This will be the seventh time that the BYU women's basketball team has been selected to compete in the postseason tourney. The team's last appearance in the WNIT was during the 2010-11 campaign where they advanced to the third round with wins over Denver and Utah State before falling to runner-up USC. During the 2009-10 season the Cougars advanced to the Quarterfinals, losing to eventual champion Cal.

Under head coach Jeff Judkins, the women's basketball program has participated in four postseason WNIT tourneys and five NCAA tournaments.

### BYU against 2013 WNIT participants

Team	Record in 2012-13
San Diego	2-0
Seattle	1-0
Utah	1-0
UCSB	1-0
Saint Mary's	1-1
Harvard	0-1

### BYU In WNIT - Year-by-Year

Year	Record	Result	Of Note
1981-82	24-13	2-1	Beat DePaul - 72-69 Lost to Florida St. - 71-75 Beat Illinois St. - 78-73
1998-99	16-13	0-1	Lost to Colorado - 53-70
2000-01	19-13	1-1	Beat Oregon St. - 78-73 Lost at Hawaii - 73-77(ot)
2004-05	19-11	0-1	Lost at Gonzaga - 57-71
2009-10	23-10	3-1	Beat Pepperdine - 62-58 Beat ASU at Tempe - 61-53 Beat Wyoming at Laramie - 67-63 Lost to Cal at Berkeley - 50-76
2010-11	25-9	2-1	Beat Denver - 75-60 Beat Utah State - 102-63 Lost to USC - 50-62
<b>Total</b>		8-6	

## BYU Capsule

BYU women's basketball continues its run in the 2013 WNIT this week. The Cougars (23-10), advanced to the third round of the postseason tournament with a 69-58 win over SDSU Saturday. In the third round, BYU will host WCC foe Saint Mary's (22-10) Wed. March 27 at 3 p.m. MDT in the Marriott Center. The Gaels advanced in the tournament with a 68-58 road win at Northern Colorado. The game will air live on BYUtv.

The Cougar team has outrebounded its opponents in 21 games. The BYU bench has outscored the opponent's bench 566-438.

When comparing points in the paint, the Cougars have scored 834 points to 684 from opponents.

BYU has had a halftime lead in all but eight games to date (vs. Gonzaga at WCC semifinals, vs. Gonzaga, vs. SD, vs. SMC, at USF, at Gonzaga, vs. Seattle and at Washington State).

In only six contests (vs. Gonzaga at WCC semifinals, vs. Gonzaga, at USF, at Gonzaga, at Boston College and at Washington State) the Cougars did not record more assists than their opponents.

Balanced scoring has added to the team's success this year. To date, three players have put up double figures in points in 13 games and four players finished with double-digit scoring in six games (vs. SDSU, at POR, at PEP, vs. PEP, vs. Tulsa, vs. UCSB)

- Head coach: Jeff Judkins (Utah, '78), is in his 12th season
- Team's leading scorer: #5 Jennifer Hamson, 11.2 ppg
- Team's leading rebounder: #5 Hamson, 8.3 rpg
- Team's assists leader: #33 Steed, 7.5 apg
- Team's steals leader: #33 Steed, 2.1 spg

## SAINT MARY'S Capsule

The Gaels have compiled a 22-10 record after a 68-58 road win over Northern Colorado, Sunday in the second round of the postseason WNIT. Saint Mary's is making its fourth straight appearance in the WNIT advancing to the second round last year.

- Head coach: Paul Thomas is in his seventh year with Saint Mary's
- Team's leading scorer: #3 Jackie Nared, 16.8 ppg
- Team's leading rebounder: #54 Danielle Maulding, 10.8 rpg
- Team's assists leader: #24 Morgan Hatten, 3.3 apg
- Team's steals leader: #54 Maulding, 1.3 spg

### Series History

The series between these two WCC foes is tied 2-2.

In Provo, BYU has a 2-0 record over the Gaels.

Head coach Jeff Judkins is 2-2 against Saint Mary's.

### Last Meeting

These two West Coast Conferences foes split the series this season with each team winning on its home court.

On January 31, in Provo, BYU picked up the 66-58 victory behind 14 points each from Kim Parker Beeston and Haley Steed. Keilani Unga also finished with double digits in scoring with 13. Jennifer Hamson led the Cougar team in the rebound category with eight. Steed dished out a game-high nine assists to go along with five steals.

For the game, BYU shot 38 percent from the field, 40 percent from behind the arc and 72 percent from the free throw line.

The Gaels shot 34 percent from the field, 29 percent from 3-point range and 67 percent from the line. Jackie Nared finished the game with a double-double from 18 points and 11 boards. Danielle Mauldin and Kate Gaze scored 10 points apiece.

In Moraga, on Feb. 8, SMC captured the 64-52 win. Steed led BYU with 18 points on six 3-pointers. She also had seven assists and four rebounds. Unga contributed 12 points and five rebounds while Jennifer Hamson led the way in blocks with four. The Cougars shot 40 percent from the field and 46 percent from the free throw line.

Danielle Mauldin recorded a double-double with 12 points and 10 rebounds to lead the Gaels. Kate Gaze tallied 10 points in the win. SMC shot 38 percent from the field and 72 percent from the charity stripe.

The Gaels outscored the Cougar bench 22-10 and got 18 points off of BYU miscues.

## USA TODAY/ESPN Top 25 Coaches Poll March 18, 2013

Rank	School (Record)
1.	Baylor (32-1)
2.	Notre Dame (31-1)
3.	Connecticut (29-4)
4.	Stanford (31-2)
5.	Duke (30-2)
6.	California (28-3)
7.	Kentucky (27-5)
8.	Penn State (25-5)
9.	Tennessee (24-7)
10.	Maryland (24-7)
11.	Texas A&M (24-9)
12.	UCLA (25-7)
13.	Georgia (25-6)
14.	South Carolina (24-7)
15.	Dayton (27-2)
16.	Delaware (30-3)
17.	Louisville (24-8)
18.	North Carolina (28-6)
19.	Colorado (25-6)
20.	Wisconsin-Green Bay (29-2)
21.	Purdue (24-8)
22.	Syracuse (24-7)
23.	Iowa State (23-8)
24.	Florida State (22-9)
25.	Nebraska (23-8)

Receiving Votes: Gonzaga (4)\*

\* Denotes BYU Opponent

### 2012-13 NCAA Ranking Summary - (3/18/13)

Category - Team	Rank
Assists Per Game	13th
Assist Turnover Ratio	24th
3-point FG's Per Game	27th
3-point FG Percentage	28th

### Category - Player

Assists Per Game - H. Steed	2nd
Assist Turnover Ratio - H. Steed	4th

### 2012-13

#### Player Honors

#### Haley Steed

- WCC Player of the Week - 12/11/12
- High Major Conference Player of the Week, CollegeSportsMadness.com (CSM.com) - 12/11/12
- ESPN Women's Basketball Player of the Week - 12/11/12
- High Major Conference Player of the Week, (CSM.com) - 12/24/12
- Madness WCC Women's Basketball Player of the Week, (CSM.com) - 2/4/13
- West Coast Conference All-Academic Honorable Mention - 3/1/13
- All-West Coast Conference Team - 3/5/13

#### Jennifer Hamson

- West Coast Conference All-Academic Team - 3/1/13
- All-West Coast Conference Team - 3/5/13

#### Kim Parker Beeston

- West Coast Conference All-Academic Team - 3/1/13

#### Keilani Unga

- All-West Coast Conference Honorable Mention - 3/5/13

#### Ashley Garfield

- West Coast Conference All-Academic Honorable Mention - 3/1/13

#### Xojian Harry

- West Coast Conference All-Academic Honorable Mention - 3/1/13

**BYU RECORDS**

**2012-13 BYU Records When...**

BYU leads at the half.....	20-5
Opponent leads at the half.....	3-5
Score is tied at the half.....	0-0
Games goes into overtime.....	1-1
BYU shoots 50% or better.....	3-0
Opponent shoots 50% or better.....	1-2
BYU makes five or more 3-pointers.....	20-6
Opponent makes five or more 3-pointers.....	5-4
BYU outrebounds opponent.....	17-3
Opponent outrebounds BYU.....	6-6
Rebounds are equal.....	0-0
BYU has 16 and under turnovers.....	15-5
Opponent has 16 and under turnovers.....	15-9
BYU has 17-20 turnovers.....	6-3
Opponent has 17-20 turnovers.....	5-1
BYU has more than 20 turnovers.....	2-2
Opponent has more than 20 turnovers.....	3-0
BYU dishes out more assists.....	24-3
Opponent dishes out more assists.....	0-6
BYU has more blocks.....	22-4
Opponent has more blocks.....	0-4
BYU records more steals.....	11-2
Opponent records more steals.....	8-9
In November.....	3-4
In December.....	6-0
In January.....	5-2
In February.....	5-3
In March.....	4-1
In April.....	0-0
Last five games.....	4-1
Longest win streak.....	9-0
Playing on Monday.....	0-0
Playing on Tuesday.....	4-0
Playing on Wednesday.....	1-1
Playing on Thursday.....	7-3
Playing on Friday.....	1-1
Playing on Saturday.....	9-5

**2012-13 BYU TEAM HIGHS**

<b>POINTS</b>	<b>STEALS</b>
(81)..... vs. Utah St. (12/4)	(13)..... vs. Idaho State (3/20)
<b>REBOUNDS</b>	<b>FG PERCENTAGE</b>
(49)..... vs. USF (1/5) at PEP (2/16)	(.600)..... vs. Seattle (12/20)
<b>3-POINTERS</b>	<b>3-PT FG PERCENTAGE</b>
(13)..... vs. Utah St. (12/4) vs. LMU-WCC Q (3/8)	(.471)..... at San Diego (1/10)
<b>ASSISTS</b>	<b>FT PERCENTAGE</b>
(26)..... vs. USF (1/5)	(1.000)..... vs. USF (1/5)
<b>BLOCKS</b>	
(10)..... vs. POR (2/21)	

**2012-13 BYU INDIVIDUAL HIGHS**

**POINTS**

(25).....	J. Hamson vs. Idaho St. (3/20)
(24).....	L. Eaton vs. Web. St. (11/9)
(23), 1 more.....	J. Hamson vs. Portland (2/21)
(23).....	H. Steed vs. Portland (2/21)
(22), 1 more, last.....	H. Steed at Utah (12/8)
(21).....	S. Seaborn vs. LMU WCC Qs (3/8)
(20).....	J. Hamson vs. GON (2/23)
(19).....	H. Steed at USF (1/26)
(19).....	K. Beeston at Harvard (11/16)
(19).....	L. Eaton at Dartmouth (11/13)
(18).....	L. Eaton vs. Creighton (11/28)
(18), 2 more, last.....	H. Steed at SMC (2/9)
(18).....	M. Bailey at GON (1/17)
(17).....	K. Unga vs. San Diego (2/7)
(17).....	H. Steed at Santa Clara (2/2)
(16).....	K. Beeston at Pepperdine (2/16)
(16) 1 more.....	S. Seaborn at LMU (2/28)

**REBOUNDS**

(17).....	J. Hamson vs. San Diego St. (3/23)
(16).....	J. Hamson vs. Santa Clara (2/14)
(16).....	A. Garfield vs. Utah St. (12/4)
(14).....	J. Hamson at Arizona (11/20)
(13).....	J. Hamson vs. LMU WCC Qs (3/8)
(13).....	M. Bailey vs. USF (1/5)
(12) 1 more.....	J. Hamson vs. Idaho St. (3/20)
(11).....	J. Hamson at LMU (2/28)
(10).....	A. Garfield vs. USF (1/5)
(10).....	M. Bailey at Dartmouth (11/13)
(9), 2 more, last.....	K. Beeston at PEP (2/16)
(9), 5 more, last.....	J. Hamson at POR (3/2)
(9).....	M. Bailey vs. Utah St. (12/4)
(9).....	L. Eaton vs. Creighton (11/28)
(9), 2 more, last.....	K. Unga at PEP (2/16)
(8).....	A. Garfield at USF (1/26)
(8), 2 more, last.....	J. Hamson vs. GON (2/23)
(8), 1 more, last.....	M. Bailey at PEP (2/16)
(8).....	K. Beeston at Washington St. (11/24)
(7), 1 more, last.....	K. Unga vs. GON (3/9)
(7).....	A. Garfield at GON (1/17)
(7).....	M. Bailey vs. Web. St. (11/9)
(7), 2 more, last.....	K. Beeston at POR (3/2)

**3-POINTERS**

(7).....	S. Seaborn vs. LMU WCC Qs (3/8)
(6), 1 more, last.....	H. Steed at SMC (2/9)
(6).....	S. Seaborn at LMU (2/28)
(5), 2 more, last.....	K. Beeston at PEP (2/16)
(5).....	H. Steed vs. POR (2/21)
(4).....	K. Beeston vs. West.N.M. (12/29)
(4), 1 more, last.....	H. Steed vs. SMC (1/31)
(3).....	H. Steed vs. Idaho St. (3/20)
(3), 1 more, last.....	S. Seaborn at SMC (2/9)
(3), 3 more, last.....	K. Beeston vs. PEP (1/12)

**ASSISTS**

(13).....	H. Steed vs. LMU (1/24)
(12), 1 more, last.....	H. Steed vs. Utah St. (12/4)
(11).....	H. Steed vs. UCSB (12/18)
(10), 1 more.....	H. Steed vs. Santa Clara (2/14)
(9), 5 more, last.....	H. Steed vs. ISU (3/20)
(8), 3 more, last.....	H. Steed at POR (3/2)
(8).....	K. Beeston vs. USF (1/5)

**BLOCKS**

(5), 5 more, last.....	J. Hamson vs. SDSU (3/23)
(4), 1 more, last.....	J. Hamson vs. GON (2/23)
(3).....	J. Hamson at PEP (2/16)
(3).....	M. Bailey vs. POR (2/21)

**STEALS**

(5), 3 more, last.....	H. Steed vs. LMU WCC Qs (3/8)
(5).....	K. Beeston vs. Idaho St. (3/20)
(4), 2 more, last.....	H. Steed at SCU (2/2)
(4).....	K. Maeda vs. Web. St. (11/9)
(3).....	H. Steed vs. Santa Clara (2/14)
(3), 2 more, last.....	K. Beeston at POR (3/2)

**TRACKING CAREER RECORDS (as of 3/24/13)**

<b>Assists</b>	<b>Blocks</b>
1. Haley Steed - 804 (2006-present)	1. Tresa Spaulding Hamson-494 (1983-87)
<b>Steals</b>	2. Debbie Dimond - 199 (1991-95)
1T. Valerie Cravens - 323 (1980-84)	3. Jennifer Hamson - 187 (2010-present)
1T. Kathy Denton - 323 (1981-1985)	<b>1,000-Point Club</b>
3. Jackie Beene McBride - 293 (1978-82)	2. Tresa Spaulding Hamson - 2,309 (1983-87)
4. Haley Steed - 291 (2006-present)	15. Mindy Nielson Bonham - 1,322 (2007-11)
<b>3-pointers</b>	16. Ambrosia Anderson - 1,285 (2002-06)
1. Erin Thorn - 391 (1999-03)	17. Haley Steed - 1,283 (2006-present)
2. Mallary Gillespie Carling - 294 (2004-08)	<b>Games Played</b>
3. Haley Steed - 261 (2006-present)	1. Haley Steed - 142 (2006-present)

## WEST COAST CONFERENCE INFO

## Current WCC Standings - 3/26/13

Place	Team	Conference	Overall
1.	Gonzaga	15-1	27-6
2.	San Diego	12-4	22-10
3.	BYU	11-5	23-10
3.	Saint Mary's	11-5	22-10
5.	Santa Clara	6-10	14-16
6.	Loyola Marymount	6-10	13-18
7.	Portland	5-11	11-20
8.	San Francisco	4-12	12-19
9.	Pepperdine	2-14	5-23

## 2012-13 WCC Team Stats - 3/26/13

Team Stats	All	Conf
Scoring Offense	5th	3rd
Scoring Defense	2nd	same
Scoring Margin	2nd	same
Free Throw %	2nd	6th
Field Goal %	3rd	same
Field Goal % Defense	1st	same
3-Point FG %	2nd	same
3-Point FG % Defense	3rd	1st
Rebounding Offense	5th	4th
Rebounding Defense	4th	same
Rebounding Margin	4th	same
Blocked Shots	2nd	1st
Assists	1st	1st
Steals	8th	9th
Turnover Margin	6th	8th
Assist/Turnover Ratio	2nd	same
Offensive Rebounds	9th	8th
Defensive Rebounds	2nd	1st
Defensive Reb. %	2nd	same
Offensive Reb. %	7th	6th
3-Point FG Made	1st	same

## 2012-13 WCC Ind. Stats - 3/26/13

Ind. Overall Stats	Player/Place
Scoring	Hamson/11th
	Steed/14th
	Beeston/19th
	Bailey/27th
Rebounding	Hamson/3rd
	Bailey/18th
Field Goal Percentage	Hamson/4th
	Bailey/5th
Assists	Steed/1st
Steals	Steed/4th
3-Point Field Goal Percentage	Beeston/2nd
	Steed/4th
	Seaborn/11th
3-Point Field Goals Made	Beeston/2nd
	Steed/3rd
	Seaborn/8th
Blocked Shots	Hamson/1st
	Bailey/12th
Assist/Turnover Ratio	Steed/1st
Offensive Rebounds	Hamson/7th
Defensive Rebounds	Hamson/3rd

## 2012-13 WCC Ind. Stats - 3/5/13

Ind. Conference Stats	Player/Place
Scoring	Steed/10th
	Beeston/19th
	Hamson/23rd
	Unga/26th
Rebounding	Hamson/5th
	Unga/18th
Field Goal Percentage	Unga/1st
	Hamson/6th
	Bailey/12th
Assists	Steed/1st
	Beeston/13th
Steals	Steed/6thT
3-Point Field Goal Percentage	Steed/2nd
	Beeston/5th
	Seaborn/10th
3-Point Field Goals Made	Steed/2nd
	Beeston/3rd
	Seaborn/5th
Blocked Shots	Hamson/1st
	Unga/9thT
	Bailey/9thT
Assist/Turnover Ratio	Steed/1st
Offensive Rebounds	Hamson/11thT
	Unga/14thT
Defensive Rebounds	Hamson/4th
	Steed/15th

## 2012-13 WCC PRESEASON POLL

## Preseason Coaches' Poll

Place	Team	Points
1.	Brigham Young Univ. (5)	61
2.	Gonzaga (4)	60
3.	Saint Mary's	48
4.	Univ. of San Diego	36
5.	Pepperdine	33
6.	Santa Clara	27
7.	Loyola Marymount	25
8.	Portland	24
9.	San Francisco	10

## Preseason All-WCC Team

Player (Yr.)	School	Pos.
Alex Cowling (Sr.)	LMU	G/F
Lexi Eaton (So.)	BYU	G
Megan Fulps (Sr.)	SCU	G
Jennifer Hamson (Jr.)	BYU	C
Amy Kame (Jr.)	SD	G
Taelor Karr (Sr.)	GON	G
Danielle Maulding (Jr.)	SMC	F
Jackie Nared (Jr.)	SMC	G
Haiden Palmer (Jr.)	GON	G
Haley Steed (Gr.)	BYU	G

## HEAD COACH JEFF JUDKINS

**Overall Record:** 254-125/11

**2012-13:** 23-10, 11-5

**2011-12:** 26-7, 12-4/T2nd



### Career Achievements

- Six 20-plus win seasons – most wins (26) twice in 2005-06 and in 2011-12
- Five NCAA Tournament appearances - best finish, Sweet Sixteen 2001-02, most recent 2012 First Round
- Three WNIT postseason tournament appearances – best finish, Quarterfinal Round (Elite Eight) 2010-11
- Three conference coach of the year awards – 2010-11, 2006-07, 2005-06 - MWC
- Two conference regular season titles – MWC (2005-06 and 2006-07)
- Two conference tournament crowns – MWC (2001-02); WCC (2011-12)
- Coached three All-Americans – Erin Thorn, Ambrosia Anderson, Kristen Riley
- Coached three conference players of the year – Ambrosia Anderson, Dani Kubik Wright, Kristen Riley
- Coached one conference defensive player of the year –Mindy Bonham
- Coached two conference sixth player of the year – Coriann Fraughton, Kristen Riley
- Became BYU's women's basketball all-time winningest coach with his 220th career win when the Cougars defeated Pepperdine, 80-56 on Jan. 12, 2012

### Coaching Experience

- Assistant Coach (men) – University of Utah (1989-99)
- Assistant Coach (women)– BYU (2000-01)

### Playing Career

- NBA with Boston Celtics, Portland Trailblazers, Detroit Pistons, Utah Jazz – Drafted in the second round by the Boston Celtics in 1978, the same year the Celtics selected Larry Bird with the sixth pick overall
- University of Utah – 1974-78 leading Utah to one conference championship and two berths in the NCAA tournament
- While at Utah was a second team Academic All-American, a three-time District VII academic selection and a three-time First Team All-WAC honoree
- Member of the 1977 United States World Games team that captured the gold medal

### Education

University of Utah - Physical and Health Education bachelor's degree, 1978

### Personal

- Married to Mary Kay
- Has five children and four grandchildren

Judkins Coaching Record			
School	Yrs.	Rec.	Postseason
BYU	2001-02	24-9	NCAA Sweet 16
BYU	2002-03	19-12	NCAA 1st Round
BYU	2003-04	15-14	DNC
BYU	2004-05	19-11	WNIT 1st Round
BYU	2005-06	26-6	NCAA 2nd Round
BYU	2006-07	23-10	NCAA 1st Round
BYU	2007-08	13-16	DNC
BYU	2008-09	18-11	DNC
BYU	2009-10	23-10	WNIT Quarterfinals
BYU	2010-11	25-9	WNIT Third Round
BYU	2011-12	26-7	NCAA 1st Round
Record:		231-115 (.668)	

**2 — STEPHANIE ROVETTI**

5-6 • SOPHOMORE • GUARD • RENO, NEVADA (RENO HS)

**In 2012-13**

- Suffered season-ending cartilage injury to left knee in practice

**In 2011-12**

- Played in 31 of the 33 total games
- Averaged 7.5 minutes of playing time
- Posted season highs of 12 points, 6 rebounds, 4 assists and 4 steals
- Averaged 2.4 points per game
- Shot 45 percent from the field and 76 percent from the free throw line
- Recorded her first ever double figure game with 12 points at Tulsa on 11/14/11

**2011-12 SEASON HIGHS**

PTS	12, at Tulsa – 11/11/11
REB	6, at BYU-H – 11/29/11
AST	4, vs. SUU – 12/8/11
STL	4, vs. SUU – 12/8/11
BLK	—
FGM	4, at Seattle U – 1/25/12
FGA	4, three, last at Seattle U - 1/25/12
3PM	—
3PA	1, three, last vs. Portland – 1/21/12
FTM	8, twice, last vs. SUU – 12/8/11
FTA	10, at Tulsa – 11/11/11

**In 2010-11**

- Redshirt

**Personal**

- Parents are David and Diana
- Has one brother and three sisters
- Sister Morgan played on the BYU Rugby Team and the U-20 Women's National Rugby Team
- Majoring in dietetics

**CAREER HIGHS**

PTS	12, at Tulsa – 11/11/11
REB	6, at BYU-H – 11/29/11
AST	4, vs. SUU – 12/8/11
STL	4, vs. SUU – 12/8/11
BLK	—
FGM	4, at Seattle U – 1/25/12
FGA	4, three, last at Seattle U - 1/25/12
3PM	—
3PA	1, three, last vs. Portland – 1/21/12
FTM	8, twice, last vs. SUU – 12/8/11
FTA	10, at Tulsa – 11/11/11

**MISCELLANEOUS**

	11-12	Career
Double-Figure PTS	1	1
10-plus Pts	1	1
Double-Doubles	0	0
3-plus AST	4	4
3-plus STL	3	3
3-plus 3-point FG	0	0
Scoring Leader	0	0
Rebound Leader	0	0
Assist Leader	0	0

**ROVETTI CAREER STATISTICS (ALL GAMES)**

Year	GP	GS	Min	Avg	FG	FGA	Pct	3FG	FGA	Pct	FT	FTA	Pct	Off	Def	TR	Avg	PF	FO	A	TO	Blk	Stl	Pts	Avg
2011-12	31	0	233	7.5	17	38	.447	0	3	.000	41	54	.759	9	20	29	0.9	28	0	28	35	1	19	75	2.4
<b>TOTAL</b>	<b>31</b>	<b>0</b>	<b>233</b>	<b>7.5</b>	<b>17</b>	<b>38</b>	<b>.447</b>	<b>0</b>	<b>3</b>	<b>.000</b>	<b>41</b>	<b>54</b>	<b>.759</b>	<b>9</b>	<b>20</b>	<b>29</b>	<b>0.9</b>	<b>28</b>	<b>0</b>	<b>28</b>	<b>35</b>	<b>1</b>	<b>19</b>	<b>75</b>	<b>2.4</b>

**ROVETTI CAREER STATISTICS (CONFERENCE GAMES)**

Year	GP	GS	Min	Avg	FG	FGA	Pct	3FG	FGA	Pct	FT	FTA	Pct	Off	Def	TR	Avg	PF	FO	A	TO	Blk	Stl	Pts	Avg
2011-12	15	0	80	5.3	7	14	.500	0	1	.000	7	11	.636	2	4	6	0.4	13	0	8	11	1	4	21	1.4
<b>TOTAL</b>	<b>15</b>	<b>0</b>	<b>80</b>	<b>5.3</b>	<b>7</b>	<b>14</b>	<b>.500</b>	<b>0</b>	<b>1</b>	<b>.000</b>	<b>7</b>	<b>11</b>	<b>.636</b>	<b>2</b>	<b>4</b>	<b>6</b>	<b>0.4</b>	<b>13</b>	<b>0</b>	<b>8</b>	<b>11</b>	<b>1</b>	<b>4</b>	<b>21</b>	<b>1.4</b>





**3 — ASHLEY GARFIELD**

5-11 • SOPHOMORE • GUARD • MORGAN, UTAH (MORGAN HS)

**In 2012-13**

- Pulled down 9 rebounds, scored 5 points, dished out a season-best 4 assists and had 1 steal in the home game vs. Idaho State in the first round of the WNIT
- Scored 7 points, grabbed 6 rebounds, shot 5-of-6 from the free throw line in the home game vs. Portland and had 2 blocks for season bests in that category
- Picked up 10 points and 7 rebounds vs. Santa Clara marking her 4th double digit outing in points on the year
- Grabbed 5 rebounds in 9 minutes of playing time in the home game vs. San Diego
- Came off the bench to grab a team-best eight rebounds in the game at USF while dishing out 3 assists for season bests to date
- Picked up her first career double-double with 14 points and 10 rebounds vs. USF and was perfect 3-for-3 shooting from the free throw line, the points tied for game highs and marked her second double digit outing in points on the year
- Grabbed career highs in rebounds with 16 vs. Utah State and in points with 9 ... the boards were game highs
- Scored 8 points at Washington State while grabbing 3 rebounds, 2 assists and 1 steal in 19 minutes of playing time ... the assists were also season highs
- Started in her first college game at Harvard grabbing 4 rebounds, 2 points, 2 assists and 1 block
- Came off the bench for 4 minutes scoring 2 points at Boston College
- Played 11 minutes while scoring 2 points vs. Weber St.

**2012-13 SEASON HIGHS**

PTS	14, vs. USF – 1/5/13
REB	16, vs. Utah State – 12/4/12
AST	4, vs. Idaho State – 3/20/13
STL	2, twice, last at San Diego – 1/10/13
BLK	2, vs. Portland – 2/21/13
FGM	5, vs. USF – 1/5/13
FGA	8, at Washington State – 11/24/12
3PM	1, three, last vs. SCU – 2/14/13
3PA	2, twice, last vs. PEP – 1/12/13
FTM	7, vs. Utah State – 12/4/12
FTA	8, vs. Utah State – 12/4/12

**CAREER HIGHS**

PTS	14, vs. USF – 1/5/13
REB	16, vs. Utah State – 12/4/12
AST	4, twice, last vs. Idaho St. – 3/20/13
STL	2, four, last at San Diego – 1/10/13
BLK	1, three, last vs. Santa Clara – 2/23/12
FGM	5, vs. USF – 1/5/13
FGA	8, at Washington State – 11/24/12
3PM	1, six, last vs. SCU – 2/14/13
3PA	2, twice, last vs. PEP – 1/12/13
FTM	7, vs. Utah State – 12/4/12
FTA	8, vs. Utah State – 12/4/12

**In 2011-12**

- Played in 27 of the 33 total games
- Averaged 5.9 minutes of playing time
- Posted season highs of 8 points, 4 rebounds, 4 assists and 2 steals
- Averaged 2.0 points and 1.0 rebounds per game
- Shot 44 percent from the field, 45 percent from 3-point range and 73 percent from the free throw line
- Saw five minutes of action in her first collegiate game at Tulsa on 11/14/11

**Personal**

- Parents are Doug and Kathy
- Has one brother and one sisters
- Majoring in health education

**MISCELLANEOUS**

	12-13	Career
Double-Figure PTS	4	4
10-plus Pts	4	4
Double-Doubles	1	1
3-plus AST	3	5
3-plus STL	0	3
3-plus 3-point FG	0	0
Scoring Leader	0	0
Rebound Leader	2	2
Assist Leader	0	0

**GARFIELD CAREER STATISTICS (ALL GAMES)**

Year	GP	GS	Min	Avg	FG	FGA	Pct	3FG	FGA	Pct	FT	FTA	Pct	Off	Def	TR	Avg	PF	FO	A	TO	Blk	Stl	Pts	Avg
2011-12	27	0	160	5.9	14	32	.438	4	9	.444	22	30	.733	9	18	27	1.0	9	0	18	12	3	7	54	2.0
2012-13	33	1	502	15.2	46	104	.442	3	13	.231	49	63	.778	46	105	151	4.6	37	0	33	37	5	15	144	4.4
<b>TOTAL</b>																									

**GARFIELD CAREER STATISTICS (CONFERENCE GAMES)**

Year	GP	GS	Min	Avg	FG	FGA	Pct	3FG	FGA	Pct	FT	FTA	Pct	Off	Def	TR	Avg	PF	FO	A	TO	Blk	Stl	Pts	Avg
2011-12	14	0	65	4.6	7	14	.500	1	3	.333	10	14	.714	1	8	9	0.6	4	0	5	3	2	3	25	1.8
2012-13	16	0	260	16.3	25	53	.472	2	7	.286	23	30	.767	25	51	76	4.8	17	0	16	14	2	6	75	4.7
<b>TOTAL</b>																									



**4 — KIM PARKER BEESTON**

5-10 • JUNIOR • GUARD • HEBER CITY, UTAH (WASATCH HS)

**In 2012-13**

- Recorded her 19th double digit outing in points with 17 vs. SDSU in the WNIT second round while grabbing 4 rebounds and going 6 for 6 from the charity stripe, the points were team highs and tied for game highs
- Had a team and season best 5 steals in the home game vs. Idaho State in the WNIT first round
- Scored 13 points (12 were treys) and grabbed 8 rebounds in the tournament game vs. LMU, the points mark the 18th time this season that she's put up double digits in points
- Tallied a game-high 17 points (15 from 3-point range) in the road game at Portland while pulling down 7 boards, dishing out 4 assists and getting 3 steals, the points are the 17th time this year she's put up double digits in points, the steals tied for season highs as did the 5 treys
- Had game highs in points with 16 at Pepperdine for her 16th game putting up double figures in points, 15 of the points were treys, pulled down 9 rebounds which tied for game and career highs
- Picked up her 15th double digit outing in points with 14 vs. San Diego while grabbing 2 rebounds and dishing out 2 assists
- Recorded game highs in points with 15, (all were from 3-point range) in the home win over LMU, the 5 treys tied for career highs as well
- Dished out 8 assists which tied for game and season highs, had 3 steals for team highs and tied for season bests in the game vs. USF
- At Washington State led the team in rebounds with 8 for season and career bests in that category
- At Arizona had a season-best 3 steals
- Led all scorers with 19 points marking her third double figure game of the year at Harvard ... 15 of the points were from 3-point range ... the 5 made treys were season highs as were the points ... was also perfect from the free throw line going 4 for 4
- Recorded her first double figure game in points of the year with 13 vs. Weber State on 11/9/12
- Tied team highs in rebounds grabbing 7 vs. Weber State

**In 2011-12**

- Started all games averaging 27.7 minutes of playing time
- Averaged 9.5 points and 3.1 rebounds per game
- Posted season highs of 25 points, 6 rebounds, 10 assists and 5 steals
- Ranked third on the team in scoring, second in assists and in steals and had team's best free throw percentage .846 (55-65)
- Shot 44 percent from the field, 45 percent from 3-point range and 73 percent from the free throw line
- Named to the WCC All-Academic team
- Garnered two WCC Player of the Week honors
- Recorded double figures in points in 17 games
- In the WCC ranked fourth in assists and in assist/turnover ratio, 15th in blocks and 24th in scoring
- Started her first collegiate game vs. No. 8 Duke on 11/11/11 leading the Cougar team with 14 points, 6 rebounds, 2 assists and 2 steals

**Personal**

- Parents are Lindsay and Vicki Parker
- Has three sisters and two brothers
- Husband is Spencer Beeston
- Majoring in school health education

**2012-13 SEASON HIGHS**

PTS	19, at Harvard – 11/16/12
REB	9, at Pepperdine – 2/16/13
AST	8, vs. USF – 1/5/13
STL	5, vs. Idaho State – 3/20/13
BLK	1, twice, last vs. Idaho St. – 3/20/13
FGM	6, at USF – 1/26/13
FGA	14, vs. SMC – 1/31/13
3PM	5, four, last, at POR – 3/2/13
3PA	10, at POR – 3/2/13
FTM	8, vs. Seattle – 12/20/12
FTA	10, vs. Seattle – 12/20/12

**CAREER HIGHS**

PTS	25, vs. Arizona – 12/1/11
REB	9, at Pepperdine – 2/16/13
AST	10, vs. Gonzaga – 3/5/12
STL	5, vs. St. Mary's – 2/4/12
BLK	2, four, last vs. San Diego – 3/3/12
FGM	9, vs. Arizona – 12/1/11
FGA	16, vs. Portland – 1/21/12
3PM	5, four, last, at POR – 3/2/13
3PA	11, at Utah State – 12/17/11
FTM	8, vs. Seattle – 12/20/12
FTA	10, vs. Seattle – 12/20/12

**MISCELLANEOUS**

	12-13	Career
Double-Figure PTS	19	40
20-plus Pts	0	2
Double-Doubles	0	0
3-plus AST	9	39
3-plus STL	4	10
3-plus 3-point FG	6	13
Scoring Leader	5	10
Rebound Leader	2	2
Assist Leader	1	3

**BEESTON CAREER STATISTICS (ALL GAMES)**

Year	GP	GS	Min	Avg	FG	FGA	Pct	3FG	FGA	Pct	FT	FTA	Pct	Off	Def	TR	Avg	PF	FO	A	TO	Blk	Stl	Pts	Avg	
2009-10	8	0	102	12.8	8	19	.421	4	11	.364	4	7	.571	7	11	18	2.3	11	0	5	10	1	5	24	3.0	
2010-11	33	0	508	15.4	54	131	.412	31	79	.392	26	31	.839	44	39	83	2.5	59	1	49	35	4	24	165	5.0	
2011-12	33	33	915	27.7	108	290	.372	43	152	.283	55	65	.846	33	68	101	3.1	56	1	109	62	16	44	314	9.5	
2012-13	33	33	1025	31.1	106	271	.391	72	187	.385	47	62	.758	27	105	132	4.0	72	1	74	79	7	32	331	10.0	
<b>TOTAL</b>																										

**BEESTON CAREER STATISTICS (CONFERENCE GAMES)**

Year	GP	GS	Min	Avg	FG	FGA	Pct	3FG	FGA	Pct	FT	FTA	Pct	Off	Def	TR	Avg	PF	FO	A	TO	Blk	Stl	Pts	Avg	
2009-10	0	0	0	0	0	0	0	0	0	0	0	0	0	0	0	0	0	0	0	0	0	0	0	0	0	
2010-11	16	0	241	15.1	27	55	.491	16	35	.457	10	11	.909	15	15	30	1.9	27	0	17	14	2	6	80	5.0	
2011-12	16	16	452	28.3	39	138	.283	16	76	.211	31	33	.939	10	38	48	3.0	23	0	49	34	5	23	125	7.8	
2012-13	16	16	496	31.0	54	139	.388	34	89	.382	16	22	.727	17	49	66	4.1	33	0	44	37	2	14	158	9.9	
<b>TOTAL</b>																										

5 — JENNIFER HAMSON

6-7 • JUNIOR • CENTER • LINDON, UTAH (PLEASANT GROVE HS)



In 2012-13

- Tallied her second straight and 6th season double-double with 10 points and a career-high 17 rebounds vs. SDSU in the second round of the WNIT, the rebounds were game highs as were the 5 blocks
- Had a career-best 25 points along with 12 rebounds tallying her 5th double-double of the year in the home game vs. ISU in the first round of the WNIT, also had a game-high 5 blocks and went 7 of 8 from the free throw line
- Recorded her 4th double-double game of the season with 19 points and a game-high 13 rebounds in the tournament game vs. LMU, the points are the 14th time on the season that she's put up double figures in points
- Picked up her 13th game scoring in double figures with 14 in the road game at Portland while grabbing a game-best 9 rebounds, was perfect at the free throw line going 6 for 6
- Named WCC Player of the Week on Feb. 25 for her performance during the week that saw her score 43 points, 16 rebounds, 6 blocks and 3 steals
- Recorded game highs in points, rebounds and blocks with 20, 8 and 4, respectively in the home game vs. Gonzaga while shooting 80 percent from the field, 8 of 10 for career highs in that category, the points marked the fourth straight time she's put up double digits in scoring and the 12 on the year
- Tied her career high in points with 23 in the home game vs. Portland while pulling down a game-high 8 rebounds along with 2 blocks and 2 assists, the points mark the 11th time this season that she's scored in double digits
- Tallied 10 points for her 8th double figure game in points in the home game vs. LMU while grabbing 5 rebounds, got 2 blocks (game highs) and 2 steals for season bests in that category
- Had 2 blocks for team bests in the game vs. Western New Mexico which moved her up to third place all-time in career blocks at BYU with 139 as of 12/29/12
- Picked up her second double-double of the year and the 5th of her career with 10 points and 12 rebounds in the game vs. Tulsa ... also tied her season high in blocks with 5 ... the boards were team bests
- Started in her first game of the season at Arizona recording career bests in points with 23 and in rebounds with 14 while picking up her 4th double-double in her career

2012-13 SEASON HIGHS

PTS	25, vs. Idaho State – 3/20/13
REB	17, vs. SDSU, – 3/23/13
AST	2, five, last, vs. SDSU – 3/23/13
STL	2, twice, last at USF – 1/26/13
BLK	5, six, last vs. SDSU – 3/23/13
FGM	10, vs. Portland – 2/21/13
FGA	17, at Arizona – 11/20/12
3PM	–
3PA	–
FTM	7, vs. Idaho State – 3/20/13
FTA	8, vs. Idaho State – 3/20/13

CAREER HIGHS

PTS	25, vs. Idaho State – 3/20/13
REB	17, vs. SDSU – 3/23/13
AST	2, seven, last, vs. SDSU – 3/23/13
STL	2, four, last, at USF – 1/26/13
BLK	9, at UNLV – 2/5/11
FGM	10, vs. Portland – 2/21/13
FGA	14, vs. Air Force – 2/9/11
3PM	–
3PA	1, at Portland – 1/2/12
FTM	9, vs. Eastern Washington – 11/26/11
FTA	11, vs. Eastern Washington – 11/26/11

In 2011-12

- Played in 31 of the 33 total games averaging 17.8 minutes of playing time
- Averaged 9.5 points and 5.7 rebounds per game
- Posted season highs of 21 points, 11 rebounds and 6 blocks
- Ranked third on the team in scoring, second in rebounds and first in blocks
- Had the team's best field goal percentage .579 (114-197)
- Recorded three double doubles on the year and 14 games tallying double digits in points
- Named to the WCC All-Academic team
- Named to the 2012 WCC All-Tournament Team
- In the WCC ranked first in free throw percentage and in blocks, placed 12th in rebounding, 13th in free throw percentage, offensive rebounds and defensive rebounds, ranked 23rd in scoring
- Is a dual sport student-athlete also competing on the women's volleyball team

Personal

- Parents are David and Tresa
- Has two brothers and two sisters
- Mother is the former BYU All-American Tresa Spaulding, who holds numerous school records in basketball
- Majoring in exercise science
- Is a two-sport student-athlete, also playing volleyball

MISCELLANEOUS

	12-13	Career
Double-Figure PTS	16	40
20-plus Pts	4	4
Double-Doubles	6	9
3-plus AST	0	0
3-plus STL	0	0
3-plus 3-point FG	0	0
Scoring Leader	4	6
Rebound Leader	15	19
Assist Leader	0	0

HAMSON CAREER STATISTICS (ALL GAMES)

Year	GP	GS	Min	Avg	FG	FGA	Pct	3FG	FGA	Pct	FT	FTA	Pct	Off	Def	TR	Avg	PF	FO	A	TO	Blk	Stl	Pts	Avg
2010-11	30	20	455	15.2	90	161	.559	0	0	.000	51	69	.739	58	96	154	5.1	51	1	4	27	45	7	231	7.7
2011-12	31	0	553	17.8	114	197	.579	0	1	.000	67	89	.753	63	115	178	5.7	52	1	17	31	76	17	295	9.5
2012-13	25	24	629	25.2	116	228	.509	0	0	.000	46	72	.639	62	155	217	8.7	62	3	18	55	66	20	278	11.1
<b>TOTAL</b>																									

HAMSON CAREER STATISTICS (CONFERENCE GAMES)

Year	GP	GS	Min	Avg	FG	FGA	Pct	3FG	FGA	Pct	FT	FTA	Pct	Off	Def	TR	Avg	PF	FO	A	TO	Blk	Stl	Pts	Avg
2010-11	16	16	271	16.9	56	97	.577	0	0	.000	27	36	.750	36	52	88	5.5	31	0	2	19	31	4	139	8.7
2011-12	16	0	289	18.1	61	108	.565	0	1	.000	36	49	.735	36	59	95	5.9	27	1	8	14	40	9	158	9.9
2012-13	15	15	359	23.9	59	126	.468	0	0	.000	20	34	.588	30	87	117	7.8	40	3	11	34	35	14	138	9.2
<b>TOTAL</b>																									



**11 — XOJIAN HARRY**

5-11 • SOPHOMORE • GUARD • BOUNTIFUL, UTAH (WOODS CROSS HS)

**In 2012-13**

- Picked up career highs in points with 11 vs. USF for her first double figure game in points of her career
- Grabbed career highs in rebounds with 6 vs. Western New Mexico while also picking up career bests in assists with 3
- Had 3 steals in game vs. Creighton for season highs in that category, the steals tie for career highs
- Played 21 minutes at Washington State tallying 5 points and 2 rebounds
- In 16 minutes of playing time grabbed 3 rebounds and had 1 steal at Boston College, 11/15/12
- Played 16 minutes in the first game of the year vs. Weber State scoring 6 points, 1 assist and 1 block

**2012-13 SEASON HIGHS**

PTS	11, vs. USF – 1/5/13
REB	6, vs. Western N.M. – 12/29/12
AST	3, vs. Western N.M. – 12/29/12
STL	3, twice, last at San Diego – 1/10/13
BLK	1, four, last vs. LMU – 1/24/13
FGM	4, twice, last vs. LMU – 1/24/13
FGA	9, vs. USF – 1/5/13
3PM	2, vs. Utah State – 12/4/12
3PA	5, vs. USF – 1/5/13
FTM	3, vs. Western N.M. – 12/29/12
FTA	4, vs. Western N.M. – 12/29/12

**In 2011-12**

- Played in 32 of the 33 total games
- Averaged 7.8 minutes of playing time
- Shot 40 percent from the field, 27 percent from 3-point range and 43 percent at the free throw line
- Averaged 2.3 points and 0.6 rebounds per game
- Posted season highs of 9 points, 3 rebounds, 2 3-pointers, 2 assists and 3 steals
- Played in her first ever collegiate game vs. No. 8 Duke on 11/11/11 recording 8 points and dishing out 1 assists in 11 minutes of action

**Personal**

- Parents are Carl and Susan
- Has three brothers and one sister
- Majoring in exercise science

**CAREER HIGHS**

PTS	11, vs. USF – 1/5/13
REB	6, vs. Western N.M. – 12/29/12
AST	3, vs. Western N.M. – 12/29/12
STL	3, three, last at San Diego – 1/10/13
BLK	2, vs. Portland – 1/21/12
FGM	4, four, last vs. LMU – 1/24/13
FGA	9, twice, last vs. USF – 1/5/13
3PM	2, three, last vs. USF – 1/5/13
3PA	5, twice, last vs. USF – 1/5/13
FTM	3, vs. Western N.M. – 12/29/12
FTA	4, twice last vs. West. N.M. – 12/29/12

**MISCELLANEOUS**

	12-13	Career
Double-Figure PTS	1	1
10-plus Pts	1	1
Double-Doubles	0	0
3-plus AST	1	1
3-plus STL	4	4
3-plus 3-point FG	0	0
Scoring Leader	0	0
Rebound Leader	0	0
Assist Leader	0	0

**HARRY CAREER STATISTICS (ALL GAMES)**

Year	GP	GS	Min	Avg	FG	FGA	Pct	3FG	FGA	Pct	FT	FTA	Pct	Off	Def	TR	Avg	PF	FO	A	TO	Blk	Stl	Pts	Avg
2011-12	32	0	251	7.8	31	78	.397	10	37	.270	3	7	.429	5	14	19	0.6	21	0	6	14	3	14	75	2.3
2012-13	33	9	511	15.5	40	128	.313	14	62	.226	16	25	.640	12	37	49	1.5	61	1	19	33	10	15	110	3.3
<b>TOTAL</b>																									

**HARRY CAREER STATISTICS (CONFERENCE GAMES)**

Year	GP	GS	Min	Avg	FG	FGA	Pct	3FG	FGA	Pct	FT	FTA	Pct	Off	Def	TR	Avg	PF	FO	A	TO	Blk	Stl	Pts	Avg
2011-12	16	0	126	7.9	12	27	.444	6	14	.429	2	4	.500	1	8	9	0.6	10	0	4	9	2	6	32	2.0
2012-13	16	4	237	14.8	19	63	.302	7	35	.200	9	14	.643	3	20	23	1.4	31	1	6	11	4	9	54	3.4
<b>TOTAL</b>																									

**12 — STEPHANIE VERMUNT SEABORN** 6-0 • JUNIOR • GUARD • AIRDRIE, ALB. (BERT CHURCH HS)



**In 2012-13**

- Tallied her 9th game scoring in double figures with 12 vs. SDSU in the WNIT second round (9 were from 3-point range), pulled down 3 boards, dished out 4 assists, had 1 block and 1 steal
- Recorded career highs in points with 21, in 3-pointers made with 7, and attempted with 13 in the tournament game vs. LMU, the points, treys made and treys attempted were all game highs, the points mark the 8th time on the season that she's finished the game scoring in double digits
- For the 7th time this year recorded double digits in points with 12 in the road game at Portland while grabbing 3 boards, 2 assists and 2 blocks
- Led the team in points with 16 (12 were from 3-point range) in the road game at LMU marking the sixth time she's recorded double digits in points, the 4 treys were career bests, dished out game and career highs in assists with 6, the points tied for season bests
- Tied her career high in assists with 5 in the home game vs. Portland while scoring 5 points, grabbing 3 boards and getting 1 steal
- Dished out five assists in the road game at Santa Clara for career highs in that category
- Started her second game of the season vs. LMU on 1/24/13 contributing 8 points (six were from 3-point range), grabbed 2 rebounds and was perfect from the free throw line going 2 for 2
- Picked up season and team highs in points with 16 coming off the bench in the game at San Diego for her 5th double figure game in points, 9 of the points were treys
- Dished out a season-best 3 assists vs. USF
- Tied her season high in points with 12 vs. Tulsa marking her second double digit outing on the year
- Recorded her first double figure game in points with a season-high 12 in the game at Utah after leading all scorers in the first half with 9 ... was perfect from the charity stripe going 4 for 4 ... grabbed 4 rebounds and dished out 1 assist
- Started her first game at Washington State grabbing 3 rebounds and 2 assists
- Tallied 8 points, 6 rebounds, 1 assist and 1 steal at Boston College, 11/15/12
- Came off the bench playing 10 minutes at Dartmouth while grabbing 4 rebounds and 1 steal
- Played 20 minutes in the first game of the year vs. Weber State on 11/9/12 grabbing 6 rebounds

**2012-13 SEASON HIGHS**

PTS	21, vs. LMU at WCCChamps.– 3/8/13
REB	6, twice, last, at BC – 11/15/12
AST	6, at LMU – 2/28/13
STL	2, vs. Weber State – 11/9/12
BLK	2, at Portland – 3/2/13
FGM	7, vs. LMU at WCCChamps.– 3/8/13
FGA	14, vs. LMU at WCCChamps.– 3/8/13
3PM	7, vs. LMU at WCCChamps.– 3/8/13
3PA	13, vs. LMU at WCCChamps.– 3/8/13
FTM	4, at Utah – 12/8/12
FTA	5, at Gonzaga – 1/17/13

**CAREER HIGHS**

PTS	21, vs. LMU at WCCChamps.– 3/8/13
REB	7, vs. Utah State – 11/23/10
AST	6, at LMU – 2/28/13
STL	3, at Weber State – 11/19/11
BLK	2, three, last, at POR – 3/2/13
FGM	7 vs. LMU at WCCChamps.– 3/8/13
FGA	14, vs. LMU at WCCChamps.– 3/8/13
3PM	7, vs. LMU at WCCChamps.– 3/8/13
3PA	13, vs. LMU at WCCChamps.– 3/8/13
FTM	4, at Utah – 12/8/12
FTA	5, at Gonzaga – 1/17/13

**In 2011-12**

- Played in all 33 games
- Averaged nearly 17 minutes of playing time
- Had the team's best 3-point shooting percentage .467 (49-105)
- Tallied the second most 3-pointers made with 49
- Averaged 6.5 points, 2.2 rebounds and 1.1 assists per game
- In the WCC ranked first in 3-point field goal percentage and 11th in 3-point field goals made
- Posted season highs of 14 points, 6 rebounds, 4 3-pointers, 4 assists and 3 steals
- Recorded six games putting up double figures in points

**MISCELLANEOUS**

	12-13	Career
Double-Figure PTS	9	18
10-plus Pts	8	17
Double-Doubles	0	0
3-plus AST	6	6
3-plus STL	0	1
3-plus 3-point FG	5	12
Scoring Leader	3	4
Rebound Leader	0	0
Assist Leader	1	1

**Personal**

- Parents are Carl and Sue Vermunt
- Has four sisters and three brother-in-laws
- Husband is Travis Seaborn
- Majoring in family studies

**SEABORN CAREER STATISTICS (ALL GAMES)**

Year	GP	GS	Min	Avg	FG	FGA	Pct	3FG	FGA	Pct	FT	FTA	Pct	Off	Def	TR	Avg	Pf	FO	A	TO	Blk	Stl	Pts	Avg
2009-10	0	0	0	0	0	0	0	0	0	0	0	0	0	0	0	0	0	0	0	0	0	0	0	0	0
2010-11	29	0	301	10.4	35	118	.297	18	68	.265	12	22	.545	18	25	43	1.5	29	0	11	21	4	11	100	3.4
2011-12	33	0	554	16.8	79	182	.434	49	105	.467	7	12	.583	17	56	73	2.2	38	0	36	29	9	13	214	6.5
2012-13	33	17	756	22.9	74	208	.356	53	161	.329	27	33	.818	19	72	91	2.8	44	0	57	37	4	16	228	6.9
<b>TOTAL</b>																									

**SEABORN CAREER STATISTICS (CONFERENCE GAMES)**

Year	GP	GS	Min	Avg	FG	FGA	Pct	3FG	FGA	Pct	FT	FTA	Pct	Off	Def	TR	Avg	Pf	FO	A	TO	Blk	Stl	Pts	Avg
2009-10	0	0	0	0	0	0	0	0	0	0	0	0	0	0	0	0	0	0	0	0	0	0	0	0	0
2010-11	12	0	81	6.8	8	26	.308	5	16	.313	5	9	.556	4	3	7	0.6	11	0	1	9	2	2	26	2.2
2011-12	16	0	268	16.8	31	90	.344	22	60	.367	2	4	.500	8	28	36	2.3	16	0	17	13	6	4	86	5.4
2012-13	16	12	416	26.0	40	114	.351	28	84	.333	14	19	.737	7	32	39	2.4	18	0	34	21	2	8	122	7.6
<b>TOTAL</b>																									

15 — KYLIE MAEDA

5-5 • FRESHMAN • GUARD • HONOLULU, HAWAII (IOLANI HS)



In 2012-13

- In the road game at LMU suffered a season-ending ACL knee injury after playing 8 minutes and scoring 6 points (all from 3-point range), the points tied for career bests
- Grabbed 4 rebounds vs. Western New Mexico which tie for season and career bests in that category
- Was perfect from the free throw line going 4 for 4 in the game at Washington State where she picked up season highs in points with 6
- In the road game at Arizona played 5 minutes ... grabbed 4 rebounds for season bests while dishing out 1 assist
- Saw 3 minutes of action in the road contest at Dartmouth
- Played in her first college game vs. Weber State on 11/9/12 in the home opener recording a game-high 4 steals and dished out season bests in assists with 4

2012-13 SEASON HIGHS

PTS	6, twice, last, at LMU – 2/28/13
REB	4, twice, last vs. W.N.M. – 12/29/12
AST	5, vs. USF – 1/5/13
STL	4, vs. Weber State – 11/9/12
BLK	1, vs. Weber State – 11/9/12
FGM	–
FGA	–
3PM	2, at LMU – 2/28/13
3PA	3, at LMU – 2/28/13
FTM	4, at Washington State – 11/24/12
FTA	4, at Washington State – 11/24/12

Before BYU

- Four-year letterwinner in basketball
- Team was 2012 Interscholastic League of Honolulu Champion
- Two-time ILHL Player of the Year in 2011 and 2012 (in 2011 was co-player)
- Named to the state tournament first team
- Ranked No. 3 in Fabulous 15 of Hawaii in 2012
- Two-time Iolani Classic All-Tournament Team in 2010 and 2011
- Garnered Headmasters Award in 2012 (3.5 GPA and above)
- Honor Roll with a 3.0 GPA in 2011
- Played on the Kaiakaua Basketball Club
- Named to the End of Oregon Trail All-Tournament Team in 2011

CAREER HIGHS

PTS	6, at Washington State – 11/24/12
REB	4, twice, last vs. W.N.M. – 12/29/12
AST	5, vs. USF – 1/5/13
STL	4, vs. Weber State – 11/9/12
BLK	1, vs. Weber State – 11/9/12
FGM	–
FGA	–
3PM	2, at LMU – 2/28/13
3PA	3, at LMU – 2/28/13
FTM	4, at Washington State – 11/24/12
FTA	4, at Washington State – 11/24/12

Personal

- Parents are Lance and Eydie
- Has two brothers and two sisters
- Born in Honolulu

MISCELLANEOUS

	12-13	Career
Double-Figure PTS	0	0
10-plus Pts	0	0
Double-Doubles	0	0
3-plus AST	5	5
3-plus STL	1	1
3-plus 3-point FG	0	0
Scoring Leader	0	0
Rebound Leader	0	0
Assist Leader	0	0

MAEDA CAREER STATISTICS (ALL GAMES)

Year	GP	GS	Min	Avg	FG	FGA	Pct	3FG	FGA	Pct	FT	FTA	Pct	Off	Def	TR	Avg	PF	FO	A	TO	Blk	Stl	Pts	Avg
2012-13	28	0	287	10.3	15	39	.385	7	18	.389	5	6	.833	5	22	27	1.0	22	0	35	27	2	10	42	1.5
<b>TOTAL</b>																									

MAEDA CAREER STATISTICS (CONFERENCE GAMES)

Year	GP	GS	Min	Avg	FG	FGA	Pct	3FG	FGA	Pct	FT	FTA	Pct	Off	Def	TR	Avg	PF	FO	A	TO	Blk	Stl	Pts	Avg
2012-13	15	0	150	10.0	9	22	.409	5	12	.417	0	0	.000	3	10	13	0.9	14	0	16	15	1	2	23	1.5
<b>TOTAL</b>																									

21 — LEXI EATON

5-10 • SOPHOMORE • GUARD • MAPLETON, UTAH (SPRINGVILLE HS)



In 2012-13

- Suffered season-ending ACL injury to right knee during the home game vs. Utah State
- Had team highs in points and in rebounds with 18 and 9 respectively vs. Creighton, the points mark the 7th time on the year that she's finished the game in double figure points, the rebounds were season and career bests
- Led the team in points with 13 at Washington State marking her 6th straight double figure outing in points
- Finished the game at Arizona with 12 points for her 5th straight double figure contest while going 6-for-6 from the free throw line
- Led all scorers with 17 points at Boston College while grabbing 5 boards and 3 assists
- Recorded second straight double figure outing in points at Dartmouth with 19 leading all scorers
- In the game at Dartmouth shot .833, 5-6 from the charity stripe
- Led all scorers with 24 points in the home opener vs. Weber State while dishing out 4 assists and getting 1 block

In 2011-12

- Started in all 33 games as a freshman
- Team's second leading scorer averaging 10.5 points per game
- Ranked fourth in field goal percentage .458 (131-286)
- Scored in double digits in 20 games
- Named WCC Co-Newcomer of the Year and made the WCC All-Freshman Team
- Was named the Female Rookie of the Year by the Cougar Club
- In the WCC ranked seventh in field goal percentage and 18th in scoring
- Posted season highs of 26 points, 8 rebounds, 2 3-pointers, 5 assists, 4 steals and 2 blocks
- The 26 points vs. San Diego in the WCC Championships were the most scored by any BYU player on the year
- Is a dual-sport student-athlete competing as a high jumper on the women's track and field team

Personal

- Parents are Alan and Aleisa
- Has six siblings
- Majoring in psychology

2012-13 SEASON HIGHS

PTS	24, vs. Weber State – 11/9/12
REB	9, vs. Creighton at ESA – 11/28/12
AST	4, vs. Weber State – 11/9/12
STL	1, at Arizona – 11/20/12
BLK	1, vs. Weber State – 11/9/12
FGM	9, vs. Weber State – 11/9/12
FGA	17, at Washington State – 11/24/12
3PM	2, at Dartmouth – 11/13/12
3PA	4, at Dartmouth – 11/13/12
FTM	6, twice, last vs. Creighton – 11/28/12
FTA	8, twice, last vs. Creighton – 11/28/12

CAREER HIGHS

PTS	26, vs. San Diego – 3/3/12
REB	9, vs. Creighton – 11/28/12
AST	5, vs. Portland – 1/21/12
STL	4 vs. Nevada – 12/22/11
BLK	2, three, last at San Diego – 1/14/12
FGM	10, vs. San Diego – 3/3/12
FGA	20, vs. Duke – 11/11/11
3PM	3, twice, last vs. San Diego – 3/3/12
3PA	5, vs. San Diego – 3/3/12
FTM	6, three, last vs. Creighton – 11/28/12
FTA	8, twice, last vs. Creighton – 11/28/12

MISCELLANEOUS

	12-13	Career
Double-Figure PTS	7	27
20-plus Pts	1	2
Double-Doubles	0	0
3-plus AST	3	12
3-plus STL	0	4
3-plus 3-point FG	0	2
Scoring Leader	4	9
Rebound Leader	1	1
Assist Leader	0	0

EATON CAREER STATISTICS (ALL GAMES)

Year	GP	GS	Min	Avg	FG	FGA	Pct	3FG	FGA	Pct	FT	FTA	Pct	Off	Def	TR	Avg	PF	FO	A	TO	Blk	Stl	Pts	Avg
2011-12	33	33	752	22.8	131	286	.458	21	60	.350	63	82	.768	49	52	101	3.1	67	1	60	95	13	39	346	10.5
2012-13	8	8	225	28.1	45	98	.459	5	15	.333	30	44	.682	16	16	32	4.0	19	0	13	16	3	4	125	15.6
<b>TOTAL</b>																									

EATON CAREER STATISTICS (CONFERENCE GAMES)

Year	GP	GS	Min	Avg	FG	FGA	Pct	3FG	FGA	Pct	FT	FTA	Pct	Off	Def	TR	Avg	PF	FO	A	TO	Blk	Stl	Pts	Avg
2011-12	16	16	371	23.2	65	139	.468	14	36	.389	32	44	.727	26	23	49	3.1	37	0	27	51	10	13	176	11.0
2012-13																									
<b>TOTAL</b>	16	16	371	23.2	65	139	.468	14	36	.389	32	44	.727	26	23	49	3.1	37	0	27	51	10	13	176	11.0



**33 — HALEY STEED**

5-4 • GRAD. STUDENT • GUARD • SYRACUSE, UTAH (CLEARFIELD HS)

**In 2012-13**

- Scored 13 points and dished out a team-best 6 assists while pulling down 5 rebounds and getting 3 steals in the game vs. SDSU in the WNIT second round, the points mark the 15th time this year that she's put up double figures in points
- Recorded her 14th double figure scoring game with 20 points vs. Idaho State in the first round of the WNIT while dishing out a game-high 9 assists, and had 4 steals, the 9 assists gave her a season total of 239 surpassing her own all-time single season record in total assists with 237 she recorded last year
- Tallied 11 points in the road game at LMU recording the 14th time and the third straight she's put up double digits in points
- Tallied a season-best 23 points in the home game vs. Portland while dishing out a game-high 9 assists and getting 1 block and 2 steals, the points are the 12th time this year that she's scored double digits in points and are the third time this season that she's put up 20-plus points
- Picked up her second double-double of the year with 10 points and 10 assists in the home game vs. Santa Clara, the assists were game highs while the points mark her 11th outing putting up double digits in points
- On 2/4/13 named Madness West Coast Women's Basketball Player of the Week by College Sports Madness
- Picked up 7th game scoring in double digits with a team-best 19 (15 were treys) in the road game at USF, dished out 3 assists and tied her season bests in steals with 5
- Recorded season bests in assists with a game-high 13 in the home win vs. LMU
- On Dec. 24 named High Major Conference Player of the Week by CollegeSportsMadness.com., the second such honor this year
- On Tuesday, Dec. 11 was honored as the WCC Player of the Week, ESPN Women's Basketball Player of the Week and named High Major Conference Player of the Week by CollegeSportsMadness.com
- Led all scorers with 22 points in the road game at Utah ... the points tied for season bests and mark the 3rd time this year she's put up double digits in points ... with the 22 points she becomes BYU's 23rd player to reach BYU's exclusive 1,000-point Club
- Tied her season high in assists with 12 vs. Utah State, making her BYU's all-time assist leader with 623 ... led all scorers with 22 points, 18 of them were from 3-point range ... the 6 treys were the most made on the year and tie for career highs ... was perfect at the free throw line going 4-4 ... the points and assists give her the first double-double of the year and the 4th of her career

**2012-13 SEASON HIGHS**

PTS	23, vs. Portland – 2/21/13
REB	8, twice, last vs. USF – 1/5/13
AST	13, vs. LMU – 1/24/13
STL	5, three, last, vs. SMC – 1/31/13
BLK	1, vs. Weber State – 11/9/12
FGM	9, vs. Portland – 2/21/13
FGA	17, at USF – 1/26/13
3PM	6, twice, last, at SMC – 2/9/13
3PA	12, vs. Utah State – 12/4/12
FTM	5, twice, last vs. Seattle – 12/20/12
FTA	6, twice, last vs. Seattle – 12/20/12

**CAREER HIGHS**

PTS	24, twice, last at Tulsa – 11/24/11
REB	15, vs. Duke – 11/11/11
AST	14, vs. Pepperdine – 1/12/12
STL	7 at Arizona State – 3/23/10
BLK	2, four, last vs. SUU – 12/8/11
FGM	9, twice, last, vs. Portland – 2/21/13
FGA	17, twice, last, at USF – 1/26/13
3PM	6, five, last at SMC – 2/9/13
3PA	12, twice, last vs. Utah St. – 12/4/12
FTM	6, at Portland State – 11/14/08
FTA	6, four, last vs. Seattle – 12/20/12

**In 2011-12**

- Finished the year ranked third nationally in assist turnover ratio and fourth in assists per game
- Was a finalist for the Nancy Lieberman Award given to the best female college point guard in the nation
- Made the most 3-pointers on the team with 57
- Ranked second in defensive rebounds with 135 for a 4.1 average
- Played the most minutes on the team averaging 34.1 per game
- Led the team in total assists and steals with 237 and 72 respectively
- Dished out a total of 237 assists holding the all-time single season record for assists
- Recorded two double doubles on the season
- Named the 2012 WCC Champs MVP
- Was named to the WCC All-Conference Team
- Name team co-captain, third straight such selection

**Personal**

- Parents are Dome and Kristen Hall
- Has three siblings
- Husband's name is Bo Steed
- Has degree in exercise and wellness

**MISCELLANEOUS**

	12-13	Career
Double-Figure PTS	16	57
20-plus Pts	4	7
Double-Doubles	2	5
3-plus AST	33	123
3-plus STL	10	44
3-plus 3-point FG	9	27
Scoring Leader	6	18
Rebound Leader	0	7
Assist Leader	32	79

**STEED CAREER STATISTICS (ALL GAMES)**

Year	GP	GS	Min	Avg	FG	FGA	Pct	3FG	FGA	Pct	FT	FTA	Pct	Off	Def	TR	Avg	PF	FO	A	TO	Blk	Stl	Pts	Avg	
2006-07	8	0	173	21.6	15	40	.375	9	20	.450	5	8	.625	4	9	13	1.6	19	2	17	20	1	6	44	5.5	
2008-09	1	1	31	31.0	2	9	.222	1	3	.333	6	6	1.000	1	2	3	3.0	1	0	4	5	0	4	11	11.0	
2009-10	33	33	1084	32.8	109	288	.378	58	162	.358	20	28	.714	30	86	116	3.5	75	2	133	73	5	76	296	9.0	
2010-11	34	34	1125	32.8	101	298	.339	65	199	.327	22	28	.786	16	96	112	3.3	71	1	168	64	11	62	289	8.5	
2011-12	33	33	1126	34.1	96	282	.340	57	170	.335	43	55	.782	23	135	158	4.8	63	1	237	89	6	72	292	8.6	
2012-13	33	33	1171	35.5	122	340	.359	71	192	.370	36	42	.857	19	118	137	4.2	57	0	245	93	7	71	351	10.6	
<b>TOTAL</b>																										

**STEED CAREER STATISTICS (CONFERENCE GAMES)**

Year	GP	GS	Min	Avg	FG	FGA	Pct	3FG	FGA	Pct	FT	FTA	Pct	Off	Def	TR	Avg	PF	FO	A	TO	Blk	Stl	Pts	Avg	
2006-07	0	0	0	0	0	0	0	0	0	0	0	0	0	0	0	0	0	0	0	0	0	0	0	0	0	
2008-09	0	0	0	0	0	0	0	0	0	0	0	0	0	0	0	0	0	0	0	0	0	0	0	0	0	
2009-10	16	16	548	34.2	56	151	.371	29	81	.358	9	12	.750	18	51	69	4.3	39	1	65	35	5	35	150	9.4	
2010-11	16	16	528	33.0	51	141	.362	33	94	.351	12	14	.857	8	45	53	3.3	33	0	80	25	7	25	147	9.2	
2011-12	16	16	568	35.5	49	138	.355	31	82	.378	19	23	.826	5	61	66	4.1	29	1	124	47	3	36	148	9.3	
2012-13	16	16	576	36.0	71	177	.401	43	99	.434	10	11	.909	7	57	64	4.0	29	0	123	43	3	31	195	12.2	
<b>TOTAL</b>																										





**41 — MORGAN BAILEY**

6-2 • SOPHOMORE • FORWARD • OREM, UTAH (TIMPANOGOS HS)

**In 2012-13**

- Tallied a team-high 12 points in the semifinal game vs. Gonzaga at the WCC championships getting her 13th game scoring in double digits
- Had 3 blocks in the home game vs. Portland for career highs in that category
- Came off the bench to score 12 points and grab 8 boards in the road game at Pepperdine, the points are the 12th double digit scoring outing of the season and are the fifth in league play
- Tied for game highs in points with 18 at Gonzaga while grabbing 5 rebounds, the points are season bests
- Picked up her second double-double of her career with 14 points and 13 rebounds in the home game vs. San Francisco, the rebounds were game and career bests while the points tied for game highs and they marked the 8th double digit outing in points to date
- Tied her career high in points with 15 vs. Western New Mexico, the points were the 7th double figure outing in points on the year and were team bests, a first this season
- Grabbed a team-best 8 rebounds in the road game at Utah
- Had 2 blocks in the game at Washington State tying her season and career bests in that category
- Saw 14 minutes of action tallying 6 points, 4 rebounds and 1 block in the road game at Arizona
- Recorded her first career double-double with 12 points and 10 rebounds at Dartmouth ... the boards were game highs
- Started in her first college game vs. Weber State tallying 11 points, 7 rebounds while getting career highs in assists with 3 and in steals with 3

**2012-13 SEASON HIGHS**

PTS	18, at Gonzaga – 1/17/13
REB	13, vs. San Francisco – 1/5/13
AST	3, twice, last, vs. SD – 2/7/13
STL	3, three, last, vs. SD – 2/7/13
BLK	3, vs. Portland – 2/21/13
FGM	7, vs. Western New Mex. – 12/29/12
FGA	13, twice, last, at PEP – 2/16/13
3PM	1, vs. Western New Mex. – 12/29/12
3PA	1, vs. Western New Mex. – 12/29/12
FTM	3, at Gonzaga – 1/17/13
FTA	4, twice, last, vs. Portland – 2/21/13

**CAREER HIGHS**

PTS	18, at Gonzaga – 1/17/13
REB	13, vs. San Francisco – 1/5/13
AST	3, twice, last, vs. SD – 2/7/13
STL	3, three, last, vs. SD – 2/7/13
BLK	3, vs. Portland – 2/21/13
FGM	7, vs. Western New Mex. – 12/29/12
FGA	13, twice, last, at PEP – 2/16/13
3PM	1, three, last, vs. West. N.M. – 12/29/12
3PA	1, three last, vs. West. N.M. – 12/29/12
FTM	3, two, last, at Gonzaga – 1/17/13
FTA	4, six, last, vs. Portland – 2/21/13

**In 2011-12**

- Saw action in a total of 25 games
- Averaged 5.5 minutes of playing time
- Played in her first collegiate game at Tulsa where she tallied 5 points, 4 rebounds and 2 blocks in 11 minutes of action
- Averaged 1.8 points and 1.4 rebounds in all games
- Saw action in 13 WCC games on the year averaging 1.2 points and 1.0 rebounds per contest
- Picked up season highs with 7 points, 4 rebounds, 1 assist, 2 blocks and 2 steals

**In 2010-11**

- Redshirt

**Personal**

- Parents are Roxanne Bailey and Carl Bailey
- Has one brother and one sister
- Born in Alexandria, Virginia
- Uncle is Thurl Bailey

**MISCELLANEOUS**

	12-13	Career
Double-Figure PTS	13	13
10-plus Pts	13	13
Double-Doubles	2	2
3-plus AST	2	2
3-plus STL	3	3
3-plus 3-point FG	0	0
Scoring Leader	3	3
Rebound Leader	4	4
Assist Leader	0	0

**BAILEY CAREER STATISTICS (ALL GAMES)**

Year	GP	GS	Min	Avg	FG	FGA	Pct	3FG	FGA	Pct	FT	FTA	Pct	Off	Def	TR	Avg	PF	FO	A	TO	Blk	Stl	Pts	Avg
2011-12	25	0	137	5.5	17	50	.340	2	10	.200	8	14	.571	17	19	36	1.4	13	0	5	16	4	5	44	1.8
2012-13	33	7	626	19.0	115	234	.491	7	12	.583	25	53	.472	42	123	165	5.0	62	1	22	47	24	20	262	7.9
<b>TOTAL</b>																									

**BAILEY CAREER STATISTICS (CONFERENCE GAMES)**

Year	GP	GS	Min	Avg	FG	FGA	Pct	3FG	FGA	Pct	FT	FTA	Pct	Off	Def	TR	Avg	PF	FO	A	TO	Blk	Stl	Pts	Avg
2011-12	13	0	51	3.9	7	21	.333	1	4	.250	1	2	.500	7	6	13	1.0	4	0	3	7	2	3	16	1.2
2012-13	16	1	307	19.2	49	112	.438	4	8	.500	12	30	.400	23	55	78	4.9	33	1	13	24	14	9	114	7.1
<b>TOTAL</b>																									

**45 — KEILANI UNGA**

6-2 • SENIOR • FORWARD • WARRENVILLE, IL (WEATON WARRENVILLE HS)



**In 2012-13**

- Tied her season best 4 assists in the game vs. SDSU in the WNIT second round to go along with 8 points and 1 block
- For the 8th time on the season recorded double digits in point with 12 in the road game at Portland while grabbing 8 rebounds and going 4 for 4 from the charity stripe
- Put up 14 points in the game at Pepperdine for her 7th double figure game in points while grabbing 9 rebounds which tie for season bests and were game highs
- Scored a team-best 17 points while grabbing 7 rebounds, getting 2 blocks and 1 steal in the home game vs. SD, the points were season highs and marked the 5th game that she's finished with double figures in points
- Recorded her 4th double digit outing in points with 13 in the road game at Santa Clara while going 5 for 5 from the free throw line and grabbing a team-best 7 boards
- Shot a perfect 1.000 going 4 for 4 from the field for 8 points in the game vs. Seattle
- Tied her career high assists with 4 vs. UCSB
- Dished out career bests in assists with 4 vs. Tulsa
- Picked up season highs in points with 14 to go along with 4 rebounds, 1 assist and 1 steal at Harvard, the points are the first double digit outing in points on the year and the 12th of her career
- Led the team in rebounds with 9 at Boston College for season and career highs in that category
- Tallied 9 points and season highs in rebounds with 5 and in steals with 3 at Dartmouth
- Started in the first game of the year vs. Weber State putting up 9 points

**2012-13 SEASON HIGHS**

PTS	17, vs. San Diego – 2/7/13
REB	9, twice, last, at PEP – 2/16/13
AST	4, three, last vs. SDSU – 3/23/13
STL	3, at Dartmouth – 11/13/12
BLK	3, vs. Pepperdine – 1/12/13
FGM	8, vs. San Diego – 2/7/13
FGA	15, vs. San Diego – 2/7/13
3PM	–
3PA	–
FTM	5, twice, last at SCU – 2/2/13
FTA	6, at Dartmouth – 11/13/12

**CAREER HIGHS**

PTS	19, vs. Hartford – 11/20/07
REB	9, twice, last, at PEP – 2/16/13
AST	4, five, last vs. SDSU – 3/23/13
STL	3, six, last at Dartmouth – 11/13/12
BLK	3, twice, last vs. Pepperdine – 1/12/13
FGM	8, vs. San Diego – 2/7/13
FGA	15, vs. San Diego – 2/7/13
3PM	1, twelve, last vs. CSU – 2/17/10
3PA	3, vs. CSU – 2/17/10
FTM	7, vs. Hartford – 11/20/07
FTA	10, vs. Hartford – 11/20/07

**From 2007-2010**

- Has started in 67 of 91 total games in three previous seasons
- Enters her final year averaging 4.4 points and 2.6 rebounds per game
- During her junior season finished ranked fifth in assists with 36
- Has recorded double digit scoring in 11 games
- In her sophomore season had the most blocks on the team with 19 and ranked third in field goal percentage .406 (63-155)
- As a freshman she averaged 20 minutes of playing time
- In her junior season she started in all games averaging 17.3 minutes of playing time
- Career highs include 19 points, 8 rebounds, 3 assists, 3 blocks and 3 steals
- Picked up season highs with 7 points, 4 rebounds, 1 assist, 2 blocks and 2 steals

**Personal**

- Parents are Sione and Lose Moeaki
- Has three brothers and two sisters
- Husband's name is Harvey Unga, played football at BYU from 2006 to 2010 as a running back
- They have two children, Jackson (2) and Lei La (1)
- Born in Winfield, Illinois
- Majoring in public health

**MISCELLANEOUS**

	12-13	Career
Double-Figure PTS	8	19
10-plus Pts	8	19
Double-Doubles	0	0
3-plus AST	5	11
3-plus STL	1	3
3-plus 3-point FG	0	0
Scoring Leader	1	3
Rebound Leader	1	2
Assist Leader	0	1

**UNGA CAREER STATISTICS (ALL GAMES)**

Year	GP	GS	Min	Avg	FG	FGA	Pct	3FG	FGA	Pct	FT	FTA	Pct	Off	Def	TR	Avg	PF	FO	A	TO	Blk	Stl	Pts	Avg	
2007-08	29	9	476	16.4	39	90	.433	1	2	.500	26	40	.650	33	51	84	2.9	53	0	26	70	7	8	105	3.6	
2008-09	29	25	580	20.0	63	155	.406	4	17	.235	24	37	.649	40	41	81	2.8	57	0	18	64	19	22	154	5.3	
2009-10	33	33	571	17.3	57	133	.429	7	18	.389	24	38	.632	33	39	72	2.2	53	0	34	52	8	13	145	4.4	
2012-13	33	33	828	25.1	96	196	.490	1	5	.200	48	66	.727	57	94	151	4.6	73	0	36	68	20	17	241	7.3	
<b>TOTAL</b>																										

**UNGA CAREER STATISTICS (CONFERENCE GAMES)**

Year	GP	GS	Min	Avg	FG	FGA	Pct	3FG	FGA	Pct	FT	FTA	Pct	Off	Def	TR	Avg	PF	FO	A	TO	Blk	Stl	Pts	Avg	
2007-08	16	4	227	14.2	8	28	.286	1	2	.500	9	14	.643	15	22	37	2.3	23	0	11	31	2	6	26	1.6	
2008-09	16	12	305	19.1	35	88	.398	3	7	.429	11	18	.611	15	18	33	2.1	34	0	8	35	10	11	84	5.3	
2009-10	16	16	263	16.4	23	56	.411	3	7	.429	12	16	.750	6	20	26	1.6	24	0	15	20	6	6	61	3.8	
2012-13	16	16	398	24.9	55	99	.556	1	3	.333	30	38	.789	31	50	81	5.1	38	0	10	31	14	5	141	8.8	
<b>TOTAL</b>																										

## Walk-on Bios

**1 — CARLY STRATTON**

5-7 • FRESHMAN • GUARD • ST. GEORGE, UTAH (HURRICANE HS)

**Before BYU**

- Four-year letterwinner in basketball
- Two-time team captain
- Team MVP
- Three-time First Team All-Region
- Averaged 9.7 points, 5.3 rebounds, 5.0 assists and 3.7 steals her senior year
- Played on the Red Rocks Raider Basketball Club
- Four-year letterwinner in soccer garnering Region MVP and First Team All-Region
- Four-year letterwinner in softball garnering First Team All-Region honors
- Four-year Honor Roll, National Honor Society and four-time Top Scholar award

**Personal**

- Parents are Craig and Connie
- Has five siblings
- Born in St. George, Utah

**30 — KYLIE BROWN**

5-7 • SOPHOMORE • GUARD • GRANGEVILLE, ID (GRANGEVILLE HS)

**In 2011-12**

- Saw action in nine games
- Averaged 2.5 minutes of playing time
- Shot 22 percent from the field and 14 percent from 3-point range
- Scored a total of 7 points, 1 steal and 1 assist during her freshman campaign
- Played in four West Coast Conference games

**Personal**

- Parents are Joel and Brandy
- Has two brothers and two sisters
- Born in West Lake, California

**50 — BROOKE ROMNEY** 6-1 • FRESHMAN • FORWARD • DALLAS, TX (WOODROW WILSON & ASFM HS)**Before BYU**

- Four-year letterwinner in basketball
- Two-time Spirit Award recipient in 2011 and 2012 at ASFM
- Team captain in 2012
- Leading scorer at ASFM in 2012, averaging 15.0 points per game
- Newcomer of the Year in 2008 at Woodrow Wilson HS
- Letterwinner in volleyball, softball and track and field
- Received the Steve Fordham Award at ASFM
- Four-year Honor Roll
- National Honor Society

**Personal**

- Parents are Brent and Ella
- Has five siblings
- Born in Dallas, Texas

**Brigham Young University**  
**Brigham Young University Combined Team Statistics (as of Mar 23, 2013)**  
**All games**

<b>RECORD:</b>	<b>OVERALL</b>	<b>HOME</b>	<b>AWAY</b>	<b>NEUTRAL</b>
ALL GAMES	23-10	15-1	7-7	1-2
CONFERENCE	11-5	7-1	4-4	0-0
NON-CONFERENCE	12-5	8-0	3-3	1-2

##	Player	gp-gs	min	Total		3-Point		F-Throw		Rebounds				pf	dq	a	to	blk	stl	pts	avg		
				fg-fga	fg%	3fg-fga	3fg%	ft-fa	ft%	off	def	tot	avg										
21	EATON, Lexi	8-8	225	28.1	45-98	.459	5-15	.333	30-44	.682	16	16	32	4.0	19	0	13	16	3	4	125	15.6	
05	HAMSON, Jennifer	25-24	629	25.2	116-228	.509	0-0	.000	46-72	.639	62	155	217	8.7	62	3	18	55	66	20	278	11.1	
33	STEED, Haley	33-33	1171	35.5	122-340	.359	71-192	.370	36-42	.857	19	118	137	4.2	57	0	245	93	7	71	351	10.6	
04	BEESTON, Kim	33-33	1025	31.1	106-271	.391	72-187	.385	47-62	.758	27	105	132	4.0	72	1	74	79	7	32	331	10.0	
41	BAILEY, Morgan	33-7	626	19.0	115-234	.491	7-12	.583	25-53	.472	42	123	165	5.0	62	1	22	47	24	20	262	7.9	
45	UNGA, Keilani	33-33	828	25.1	96-196	.490	1-5	.200	48-66	.727	57	94	151	4.6	73	0	36	68	20	17	241	7.3	
12	SEABORN, Stephanie	33-17	756	22.9	74-208	.356	53-161	.329	27-33	.818	19	72	91	2.8	44	0	57	37	4	16	228	6.9	
03	GARFIELD, Ashley	33-1	502	15.2	46-104	.442	3-13	.231	49-63	.778	46	105	151	4.6	37	0	33	37	5	15	144	4.4	
11	HARRY, Xojian	33-9	511	15.5	40-128	.313	14-62	.226	16-25	.640	12	37	49	1.5	61	1	19	33	10	15	110	3.3	
15	MAEDA, Kylie	28-0	287	10.3	15-39	.385	7-18	.389	5-6	.833	5	22	27	1.0	22	0	35	27	2	10	42	1.5	
30	BROWN, Kylie	11-0	28	2.5	2-7	.286	1-5	.200	0-0	.000	0	3	3	0.3	0	0	1	5	0	2	5	0.5	
01	STRATTON, Carly	14-0	36	2.6	1-3	.333	0-1	.000	1-2	.500	0	3	3	0.2	5	0	1	7	0	1	3	0.2	
50	ROMNEY, Brooke	10-0	26	2.6	0-4	.000	0-0	.000	0-0	.000	6	5	11	1.1	3	0	1	4	1	0	0	0.0	
Team											56	70	126										
Total.....		33	6650		778-1860	.418	234-671	.349	330-468	.705	367	928	1295	39.2	517	6	555	516	149	223	2120	64.2	
Opponents.....		33	6650		673-1901	.354	135-446	.303	391-561	.697	390	787	1177	35.7	425	-	384	456	71	253	1872	56.7	

<b>TEAM STATISTICS</b>	<b>BY</b>	<b>OPP</b>	<b>Date</b>	<b>Opponent</b>	<b>Score</b>	<b>Att.</b>		
SCORING	2120	1872	11/9/12	WEBER STATE	W 80-55	1120		
Points per game	64.2	56.7	11/13/12	at Dartmouth	W 58-57	642		
Scoring margin	+7.5	-	11/15/12	at Boston College	L 56-62	670		
FIELD GOALS-ATT	778-1860	673-1901	11/16/12	at HARV	L 65-71	631		
Field goal pct	.418	.354	11/20/12	at Arizona	W 62-48	3375		
3 POINT FG-ATT	234-671	135-446	11/24/12	at Washington State	L 52-67	0		
3-point FG pct	.349	.303	11/28/12	vs Creighton	Lot 62-65	325		
3-pt FG made per game	7.1	4.1	12/4/12	UTAH STATE	W 81-77	449		
FREE THROWS-ATT	330-468	391-561	12/08/12	at Utah	W 53-48	1925		
Free throw pct	.705	.697	12/15/12	TULSA	W 70-48	439		
F-Throws made per game	10.0	11.8	12/18/12	UC SANTA BARBARA	W 67-39	289		
REBOUNDS	1295	1177	12/20/12	SEATTLE UNIVERSITY	W 70-62	425		
Rebounds per game	39.2	35.7	12/29/12	WESTERN NEW MEXICO	W 72-31	787		
Rebounding margin	+3.6	-	* 01/05/13	SAN FRANCISCO	W 80-58	719		
ASSISTS	555	384	* 1/10/13	at San Diego	Wot 57-54	352		
Assists per game	16.8	11.6	* 1/12/13	PEPPERDINE UNIVERSIT	W 68-42	784		
TURNOVERS	516	456	* 01/17/13	at GONZAGA BULLDOGS	L 59-74	6000		
Turnovers per game	15.6	13.8	* 01/24/13	LOYOLA MARYMOUNT	W 72-53	854		
Turnover margin	-1.8	-	* 01/26/13	at San Francisco Dons	L 56-65	557		
Assist/turnover ratio	1.1	0.8	* 01/31/13	SAINT MARY'S	W 66-58	682		
STEALS	223	253	* 02/02/13	at Santa Clara	W 65-48	0		
Steals per game	6.8	7.7	* 02/07/13	SAN DIEGO	W 53-48	528		
BLOCKS	149	71	* 02/09/13	at Saint Mary's (CA)	L 52-64	562		
Blocks per game	4.5	2.2	* 02/14/13	SANTA CLARA	W 65-42	617		
ATTENDANCE	10716	32193	* 2/16/13	at Pepperdine	W 67-44	212		
Home games-Avg/Game	16-670	14-1148	* 02/21/13	UNIV. OF PORTLAND	W 79-64	664		
Neutral site-Avg/Game	-	3-5372	* 02/23/13	GONZAGA	L 55-66	1430		
Score by Periods	1st	2nd	OT	Totals	* 02/28/13	at Loyola Marymount	L 55-68	587
Brigham Young Univer	1004	1102	14	2120	* 03/02/13	at Portland	W 73-63	563
Opponents	856	1002	14	1872	3/08/13	vs LMU	W 69-57	7896
					03/09/13	vs Gonzaga	L 43-62	7896
					03/20/13	IDAHO STATE UNIV.	W 69-54	459
					03/23/13	SAN DIEGO STATE	W 69-58	470

\* = Conference game

# 2012-2013 BYU BASKETBALL RADIO/TV ROSTER



**CARLY STRATTON**  
FRESHMAN, 5-7, GUARD



**STEPHANIE ROVETTI**  
SOPHOMORE, 5-6, GUARD



**ASHLEY GARFIELD**  
SOPHOMORE, 5-11, GUARD



**KIM PARKER BEESTON**  
JUNIOR, 5-11, GUARD



**JENNIFER HAMSON**  
JUNIOR, 6-7, CENTER



**XOJIAN HARRY**  
SOPHOMORE, 5-11, GUARD



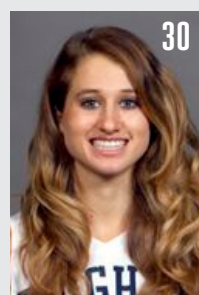
**STEPHANIE SEABORN**  
JUNIOR, 6-0, FORWARD/GUARD



**KYLIE MAEDA**  
FRESHMAN, 5-5, GUARD



**LEXI EATON**  
SOPHOMORE, 6-0,  
FORWARD/GUARD



**KYLIE BROWN**  
SOPHOMORE, 5-7, GUARD



**HALEY STEED**  
GRADUATE, 5-4, GUARD



**MORGAN BAILEY**  
SOPHOMORE, 6-2, CENTER



**KEILANI UNGA**  
SENIOR, 6-2, FORWARD



**BROOKE ROMNEY**  
FRESHMAN, 6-1, FORWARD



**JEFF JUDKINS**  
HEAD COACH



**CHRIS BOETTCHER**  
ASSISTANT COACH



**MELINDA BENDALL**  
ASSISTANT COACH



**RAY STEWART**  
ASSISTANT COACH





**Championship at TBA  
3 p.m. ET Sat. April 6  
CBS Sports Network**

**2013  
Postseason WNIT**



**CHAMPIONS**

*All game times are according to  
host school's time zone.*



**Round 1  
March 20-22**  
Washington 65 20T  
7 PT Fri. 3/22  
@ Washington  
E. Washington 60  
Pacific 69  
7 PT Fri. 3/22  
@ Pacific  
UALR 65  
Long Beach St. 49  
7 PT Wed. 3/20  
@ Long Beach St.  
Utah 56  
San Diego 61  
6 PT Thur. 3/21  
@ San Diego  
Hawaii 49  
San Diego St. 69  
7 PT Wed. 3/20  
@ San Diego St.  
UCSB 46  
BYU 69  
7 MT Wed. 3/20  
@ BYU  
Idaho St. 54  
St. Mary's 68  
7 PT Thur. 3/21  
@ St. Mary's  
Seattle 51  
Wyoming 63  
7 MT Thur. 3/21  
@ Wyoming  
Northern Colo. 71  
Minnesota 51  
7 CT Fri. 3/22  
@ Minnesota  
Ball St. 54  
Marquette 59  
7 CT Fri. 3/22  
@ Marquette  
Northern Iowa 61  
Kansas St. 72  
7 CT Thur. 3/21  
@ Kansas St.  
Texas Southern 44  
Illinois St. 63  
7:05 CT Thur. 3/21  
@ Illinois St.  
IUPUI 47  
Toledo 63  
7 ET Thur. 3/21  
@ Toledo  
Butler 49  
Youngstown St. 63  
7:05 ET Thur. 3/21  
@ Youngstown St.  
Indiana St. 51  
Missouri 58  
7 CT Wed. 3/20  
@ Missouri  
Eastern Illinois 60  
Illinois 73  
7 CT Thur. 3/21  
@ Illinois  
Miami (OH) 60

**Round 2  
March 23-25**  
Washington 78  
2 PT Sun. 3/24  
at Washington  
Pacific 85  
Utah 61  
7 MT Mon. 3/25  
@ Utah  
San Diego 50  
San Diego St. 58  
2 MT Sat. 3/23  
@ BYU  
BYU 69  
St. Mary's 68  
2 MT Sun. 3/24  
@ Northern Colo.  
Northern Colo. 58  
Ball St. 53  
2 ET Sun. 3/24  
@ Ball State  
Northern Iowa 48  
Kansas St. 57  
7 CT Mon. 3/25  
@ Kansas St.  
Illinois St. 48  
Toledo 61  
2 ET Sat. 3/23  
@ Toledo  
Youngstown St. 43  
Eastern Illinois 54  
7 CT Mon. 3/25  
@ Illinois  
Illinois 62

**Round 3  
March 27-29**  
Pacific  
Utah  
BYU  
St. Mary's  
Ball St.  
Kansas St.  
Toledo  
Illinois

**Quarterfinals  
March 30-Apr 1**  
7 PT Thur. 3/28  
@ Pacific  
7 MT Mon. 3/25  
@ Utah  
time TBA Wed.  
3/27 @ BYU  
7 CT Thur. 3/28  
@ Kansas St.  
7 ET Thur. 3/28  
@ Toledo

**Semifinals  
April 3-4**

**Championship  
April 6**

**2013  
Postseason WNIT  
CHAMPIONS**

**Semifinals  
April 3-4**

**Quarterfinals  
March 30-Apr 1**

**Round 3  
March 27-29**  
Auburn  
6 CT Wed. 3/27  
@ Auburn  
Tulane  
2 CT Sun. 3/24  
@ Arkansas  
Drexel  
7 ET Sat. 3/23  
@ Drexel  
Harvard 72  
7 ET Thur. 3/28  
@ BGSU  
Bowling Green  
5 ET Sat. 3/23  
@ BGSU  
Duquesne 54

**Round 2  
March 23-25**  
W. Kentucky 66  
2 CT Sun. 3/24  
@ Auburn  
Auburn 84  
Arkansas 48  
2 CT Sun. 3/24  
@ Arkansas  
Tulane 60  
Drexel 82  
7 ET Sat. 3/23  
@ Drexel  
Harvard 72  
Bowling Green 61  
5 ET Sat. 3/23  
@ BGSU  
Duquesne 54

**Round 1  
March 20-22**  
W. Kentucky 88 OT  
7 CT Thur. 3/21  
@ WKU  
East Carolina 77 OT  
Auburn 80  
6 CT Wed. 3/20  
@ Auburn  
UAB 57  
Arkansas 67  
7 CT Thur. 3/21  
@ Arkansas  
Memphis 57  
Tulane 65  
7 CT Thur. 3/21  
@ Tulane  
Sam Houston St. 57  
Drexel 59  
7 ET Thur. 3/21  
@ Drexel  
Iona 50  
Hartford 57  
7 ET Thur. 3/21  
@ Hartford  
Harvard 61  
Bowling Green 76  
7 ET Thur. 3/21  
@ BGSU  
SMU 70  
Duquesne 71  
7 ET Thur. 3/21  
@ Duquesne  
Akron 66  
Boston 61  
7 ET Thur. 3/21  
@ Boston  
Sacred Heart 49  
Fordham 55  
7 ET Thur. 3/21  
@ Fordham  
Army 46  
James Madison 77  
7 ET Thur. 3/21  
@ JMU  
NC A&T 64  
NC State 60  
7 ET Thur. 3/21  
@ NC St.  
Richmond 55  
Old Dominion 73  
7 ET Thur. 3/21  
@ Old Dominion  
Davidson 82  
Charlotte 79  
7 ET Thur. 3/21  
@ Charlotte  
Appalachian St. 61  
Florida Int'l 68  
7 ET Thur. 3/21  
@ Florida Int'l  
Florida 75  
7 ET Mon. 3/25  
@ Winthrop  
Winthrop 53  
7:05 ET Thur. 3/21  
@ FGCU  
Winthrop 65

**Round 2  
March 23-25**  
Auburn 80  
6 CT Wed. 3/20  
@ Auburn  
UAB 57  
Arkansas 67  
7 CT Thur. 3/21  
@ Arkansas  
Memphis 57  
Tulane 65  
7 CT Thur. 3/21  
@ Tulane  
Sam Houston St. 57  
Drexel 59  
7 ET Thur. 3/21  
@ Drexel  
Iona 50  
Hartford 57  
7 ET Thur. 3/21  
@ Hartford  
Harvard 61  
Bowling Green 76  
7 ET Thur. 3/21  
@ BGSU  
SMU 70  
Duquesne 71  
7 ET Thur. 3/21  
@ Duquesne  
Akron 66  
Boston 61  
7 ET Thur. 3/21  
@ Boston  
Sacred Heart 49  
Fordham 55  
7 ET Thur. 3/21  
@ Fordham  
Army 46  
James Madison 77  
7 ET Thur. 3/21  
@ JMU  
NC A&T 64  
NC State 60  
7 ET Thur. 3/21  
@ NC St.  
Richmond 55  
Old Dominion 73  
7 ET Thur. 3/21  
@ Old Dominion  
Davidson 82  
Charlotte 79  
7 ET Thur. 3/21  
@ Charlotte  
Appalachian St. 61  
Florida Int'l 68  
7 ET Thur. 3/21  
@ Florida Int'l  
Florida 75  
7 ET Mon. 3/25  
@ Winthrop  
Winthrop 53  
7:05 ET Thur. 3/21  
@ FGCU  
Winthrop 65