



Cougar Basketball

CONTACT INFORMATION

Basketball Media Relations Contact: Brett Pyne
 Office Phone: (801) 422-4912
 Cell Phone: (801) 367-1631
 Home Phone: (801) 796-6867
 Email: brett_pyne@byu.edu
 Assoc. AD/Media Relations Director: Duff Tittle
 Office Phone: (801) 422-8948
 Home Phone: (801) 227-0746
 Email: duff_tittle@byu.edu
 Media Relations Fax: (801) 422-0633
 Pressrow Phone: (801) 378-3675
 Mailing Address: 30 SFH, Provo, UT 84602-2239

2002-03 BYU SCHEDULE

NOVEMBER 2002

Nov. 5 EA Sports All-Stars (Exb) 89-84 W
 Nov. 13 Dominican Republic (Exb) 92-55 W
 Nov. 22-25 Paradise Jam @ U.S. Virgin Islands
 Nov 22 v. Toledo 71-56 W
 Nov 23 v. Kansas State 73-64 W
 Nov 25 v. St. Bonaventure 66-57 W
 Nov. 30 Rice 95-56 W

DECEMBER 2002

Dec. 4 @ Arizona State (FSN) 64-60 W
 Dec. 7 @ Creighton 2:00 p.m.
 Dec. 11 San Diego 7:00 p.m.
 Dec. 14 Utah State (SWP) 7:00 p.m.
 Dec. 21 UC Santa Barbara 5:00 p.m.
 Dec. 23 @ San Francisco 7:00 p.m.
 Dec. 28 Southern Utah 7:00 p.m.

JANUARY 2003

Jan. 2 Pepperdine 7:00 p.m.
 Jan. 4 Touchstone Energy All-College Classic
 in Oklahoma City
 v. Oklahoma State (ESPN2) 5:30 p.m.
 Jan. 8 @ Weber State 7:00 p.m.
 Jan. 11 Idaho State 7:00 p.m.
 Jan. 16 UNLV (SWP) 7:00 p.m.
 Jan. 20 @ San Diego State (SWP) 7:00 p.m.
 Jan. 25 UTAH (ESPN+Plus) 1:00 p.m.

FEBRUARY 2003

Feb. 1 New Mexico (ESPN+Plus) 1:00 p.m.
 Feb. 3 Air Force 8:30 p.m.
 Feb. 8 @ Wyoming (ESPN+Plus) 1:00 p.m.
 Feb. 10 @ Colorado State 7:00 p.m.
 Feb. 14 @ UNLV (SWP) 7:30 p.m.
 Feb. 17 San Diego State (SWP) 8:30 p.m.
 Feb. 24 @ Utah (ESPN) 10:00 p.m.

MARCH 2003

Mar. 1 @ Air Force (SWP) 4:00 p.m.
 Mar. 3 @ New Mexico (SWP) 7:00 p.m.
 Mar. 6 Wyoming (SWP) 7:00 p.m.
 Mar. 8 Colorado State (SWP) 7:00 p.m.
 Mar. 12-15 MWC Tournament @ Las Vegas

*Game times are local to site
 SWP - SportsWest Productions
 FSA - Fox SportsNet Arizona

GAME # 6 FAST FACTS

BYU (5-0, 0-0 MWC) @ CREIGHTON (5-0, 0-0 MVC)

Saturday, Dec. 7, 2002
 Omaha Civic Auditorium (9,377)
 Omaha, Nebraska
 2 p.m. CST (1 p.m. MST)

Coaches: .BYU, Steve Cleveland (90-69 in sixth year; same overall)
 Creighton, Dana Altman (151-95 in ninth year; 234-162 in 14th year overall)

Series: . . .BYU leads, 5-2
 Last Meeting: BYU won 61-52 in Provo last year on Dec. 8, 2001

TV:None

Radio: . . .KSL Newsradio 1160 AM (Cougar Sports Network)
 Pregame Air Time: 1 p.m. CST (Noon MST)
 Play-by-Play: Greg Wrubell
 Game Analyst: Mark Durrant

Web: . . .Live audio link available at byucougars.com/basketball_m/ (select 2002-03 schedule)

BYU'S PROBABLE STARTERS:

POS.	#	NAME	HT.	WT.	YR.	PPG	RPG
F	3	Mark Bigelow	6-7	195	Jr.	13.2	2.6 2.4 apg
F	52	Jared Jensen	6-9	250	So.	11.4	4.6
C	55	Rafael Araujo	6-11	265	Jr.	6.4	7.6
G	2	Travis Hansen	6-6	210	Sr.	17.0	5.4 3.0 apg
G	24	Kevin Woodberry	6-0	170	Jr.	5.6	2.0 2.0 apg

BYU RESERVES:

POS.	#	NAME	HT.	WT.	YR.	PPG	RPG
G	14	Ricky Bower	6-4	185	Jr.	5.2	2.4
F	15	John Allen	6-7	215	So.	5.0	2.4
G	10	Terry Nashif	5-10	165	Fr.	3.6	2.2 1.6 apg
C	40	Dan Howard	7-0	225	Jr.	3.0	1.2
F	32	Bart Jepsen	6-9	235	Jr.	1.8	0.5
G	4	Luiz Lemes	6-3	180	Jr.	1.4	0.8
F	5	Jake Shoff	6-9	265	Jr.	1.0	2.3

BYU CONTINUES ROAD TRIP AT NO. 26 CREIGHTON SATURDAY

Off to its best start since the 1991-92 season, BYU (5-0) travels to face Creighton (5-0) Saturday in a 2 p.m. CST (1 p.m. MST) start. Both teams are coming off road wins Wednesday, with BYU defeating the Pac-10's Arizona State while Creighton won its Missouri Valley Conference opener at Northern Iowa. Saturday's game is not being televised. The radio broadcast can be heard on KSL Newsradio 1160 and the Cougar Sports Network, beginning at 1 p.m. CST (Noon MST) with a one-hour pregame show. KSL's Greg Wrubell will call the play-by-play action with Mark Durrant providing game analysis. A live internet audio link is available on the basketball page of the official BYU athletics website, byucougars.com.

The Cougars are coming off a 64-60 victory at Arizona State that ended the Cougars' 11-game road losing streak. BYU opened last season with a road win at San Diego but lost its final 11 road games of the year. BYU returns eight lettermen and three starters from last year's 18-12 NIT team, led by second-team All-Mountain West Conference guard Travis Hansen. The Cougars currently own the nation's longest homecourt winning streak at 37 games. BYU opened this season with three wins at the Paradise Jam in the U.S. Virgin Islands to claim the 2002 title. BYU's current four-game winning streak away from the Marriott Center is the team's longest since winning five straight on the road in March 2001.

Creighton is ranked 26th nationally in both polls and is coming off a 65-52 win at Northern Iowa on Wednesday after defeating Notre Dame on Nov. 26 to win the Guardians Classic in Kansas City, Mo.



SERIES BREAKDOWN

Overall Series Record: BYU leads 5-2
 BYU Record in Provo: 2-0
 BYU Record at Creighton: 2-2
 BYU Record at Neutral Sites: 1-0
 BYU Record under Steve Cleveland: 1-0
 BYU Record in Overtime Games: N/A
 Longest BYU Win Streak: 4 (1934-71)
 Longest Creighton Win Streak: 1 (twice)
 Largest BYU Margin of Victory: 35, 109-74 in 1964
 Largest Creighton Margin of Victory: 13, 99-86 in 1973
 Most Points Scored by BYU: 109 in 1964
 Most Points Scored by Creighton: 99 in 1973

Date	Opponent	Score	W/L
12-19-31	at Creighton	36-41	L
12-20-34	at Creighton	48-38	W
12-19-35	at Creighton	43-36	W
12-28-64	vs. Creighton*	109-74	W
	* All College Tournament		
12-11-71	Creighton	96-68	W
12-17-73	at Creighton @ Omaha	86-99	L
12-8-01	Creighton	61-52	W

CREIGHTON GENERAL INFO

Location: Omaha, Neb.
 Founded: 1878
 Enrollment: 6,297
 Nickname: Bluejays
 Colors: Blue and White
 Home Arena: Omaha Civic Auditorium (9,377)
 Conference: Missouri Valley
 Athletic Director: Bruce Rasmussen

BASKETBALL INFO

Head Coach: Dana Altman
 Alma Mater: Eastern New Mexico (1980)
 Best time to call: Weekday mornings
 Office Phone: (402) 280-1795
 Overall Record (Years): 234-162 (14th)
 Record at School (Years): 151-95 (9th)
 Assistant Coaches: Greg Gensing, Len Gordy, Darian DeVries

2001-2002

Overall Record: 23-9
 Conf. Record/Finish: 14-4/Tie-1st (1st in MVC tourney)
 Final Ranking/Post Season Finish: N/A, 2nd Round NCAA Tournament

2002-2003

Letterman Returning/Lost: 10/2
 Starters Returning/Lost: 5/0

RETURNING STARTERS

Kyle Korver, 6-7, 210, Sr., F (15.1 ppg, 5.5 rpg)
 Brody Deren, 6-8, 245, Jr., F (9.9 ppg 5.1 rpg)
 Larry House, 6-4, 205, Sr., G (6.8 ppg, 5.6 rpg)
 Michael Lindeman, 6-6, 190, Jr., F (6.7, 3.5 rpg)
 Tyler McKinney, 6-2, 175, So., G (4.3 ppg, 1.8 rpg)

MEDIA RELATIONS

Basketball Contact: Rob Anderson
 Office: (402) 280-5544
 Home: (402) 935-1807
 Email: robert.anderson@creighton.edu
 Fax: (402) 280-2495
 Press Row: (402) 444-3208
 Web Site: www.gocreighton.com

CREIGHTON BLUEJAYS

Creighton (5-0) returns 10 of 12 lettermen and all five starters from last season's 23-9 team that reached the second round of the NCAA Tournament. The Bluejays have made the NCAA tournament the past four seasons. Last year Creighton knocked off No.17 Western Kentucky during the regular season and No.14 Florida in the first round of the NCAA Tournament before falling to No. 16 Illinois in the second round with virtually the same team it has this year. Dana Altman was named MVC Coach of the Year, Kyle Korver was named MVC Player of the Year and Terrell Taylor was named the MVC's Sixth Man of the Year. Taylor, who scored 12.6 ppg, is the team's biggest loss. The Jays have been picked to win their third consecutive Missouri Valley Conference title this season, led by the senior trio of DeAnthony Bowden, Larry House and Korver. Korver, Joe Dabbert, Brody Deren, Mike Grimes and Michael Lindeman give CU plenty of returning depth in the frontcourt, while Nate Funk, Tyler McKinney, Kellen Miliner and Brandon Sims all share time on the perimeter with House and Bowden. Creighton crushed its first three opponents with easy wins over Texas-Arlington (106-50) and Furman (82-57) at home and IUPUI (99-52) at the Guardians Classic in Kansas City, Mo. The Jays claimed the Guardians Classic championship, defeating Notre Dame 80-75 in the final. Korver won MVP honors after a career-best seven three-pointers and a season-high 24 points against Notre Dame. Though Notre Dame came within two on five occasions, they never led in the second half. Tyler McKinney made three clutch plays down the stretch and finished with a career-best 14 points for CU. Notre Dame went on to clobber No. 10 Marquette in its next game. After an eight-day layoff, the Jays opened their conference season at Northern Iowa Wednesday, winning 65-52 with House scoring a game-high 20 points. Korver leads CU on the year at 18.0 ppg, followed by House at 10.4 and Deren at 9.2. Deren pulls down a team-leading 6.6 rebounds per game while Korver adds 4.4. Five players have double-digit assists this year as the Jays spread it around averaging 18.2 assists as a team. Korver hit five or more treys in each of the first four games and was 2-4 at Northern Iowa Wednesday, despite scoring only eight points. On the year he is shooting an incredible 65.8 percent on threes (25-38), having taken more three attempts than any other Jays player has attempted field goals, except House who has taken 49 shots, second to Korver's 52. Korver is shooting 57.7 percent overall and is 5-6 from the line. In the first four games, the Jays shot an incredible 58 percent from the floor, including 56 percent from three-point range. Overall, CU is shooting 54.3 percent, including 50.9 percent on threes, in its five wins. While they are hot from the floor, they are only shooting 59.2 percent from the free throw line. Creighton's Dana Altman (Eastern New Mexico, 1980) is in his ninth year as head coach of the Bluejays. He owns a 150-95 (.612) mark at CU and a career record of 233-162 (.590) in his 14th year as an NCAA Division I head coach. Altman has been named conference coach of the year eight times in his 17 years as a head coach, including recognition in 2001 and 2002 from the Missouri Valley Conference. Altman has led Creighton to four consecutive NCAA Tournaments and his teams have played in the postseason in eight of the past 11 years.

CREIGHTON'S PROBABLE STARTERS

POS.	#	NAME	HT.	WT.	YR.	PPG	RPG	OTHER
F	22	Michael Lindeman	6-6	190	Jr.	8.2	3.8	37 straight starts
F	25	Kyle Korver	6-7	210	Sr.	18.0	4.4	66% on threes
C	43	Brody Deren	6-8	245	Jr.	9.2	6.6	all-Guardians team
G	24	Tyler McKinney	6-2	175	So.	6.8	2.0	12.0 in last two games
G	20	Larry House	6-4	205	Sr.	10.4	2.8	Career 20 pts at N.Iowa

SERIES TIDBITS

This will be the eighth meeting between the two teams. BYU leads the series 5-2 and has five of the last six games after defeating Creighton in Provo last year. Last year's game was the first meeting since 1973 when Creighton won for the last time, 99-86, at home. BYU is 2-2 at Creighton and 2-0 at home with a 1-0 neutral court mark. Steve Cleveland is 1-0 against Creighton. The overall series dates back to 1931. The teams met three times between 1931 and 1935 before the next meeting in 1964, followed by games in 1971 and 1973 prior to last year's contest in Provo.

QUOTING BYU COACH STEVE CLEVELAND

"This is a very challenging road trip, playing at Arizona State and then at Creighton. Both are very good teams. I fully expect Creighton to end up in the top-20 rankings. They have good players and are well coached. Coach Altman is a class act. He has good depth and he has some great shooters. They are tough to play anywhere but it will be especially tough playing them at home. I like the way our guys are competing right now and with our added depth this year it gives us a better chance to be competitive on the road. In order for us to be a good team we have to win on the road. We went up against a quality team in ASU Wednesday. It was nice to get a win, but we know this isn't the end of our work by a long shot. We've got the toughest preseason schedule we've had since I've been at BYU and the Mountain West Conference will be the strongest it has ever been. And Creighton may be the best team on our preseason schedule."

UP NEXT

After Saturday's game at Creighton, BYU will fly home that evening. The Cougars' next opponent is the University of San Diego. That game will be played in the Marriott Center on Wednesday at 7 p.m. MST. The Toreros are currently 3-1, including a win at preseason nationally ranked UCLA.



2002-03 BYU NUMERICAL ROSTER

NO.	NAME	POS.	HT.	WT	YR.	EXP.	HOMETOWN (PREVIOUS SCHOOL)	PLAYER NOTE
2	Travis Hansen	G/F	6-6	210	Sr.	2L	Orem, Utah (Utah Valley State College)	BYU's leading scorer (17.0) had season-high 23 at ASU
3	Mark Bigelow	F/G	6-7	195	Jr.	2L	Olympia, Wash. (Olympia HS)	Second-leading scorer (13.2) has team-best 7 treys
4	Luiz Lemes	G	6-3	180	Jr.	TR	Sao Paulo, Brazil (E. Oklahoma State)	JC Transfer shot 47 percent at Eastern Oklahoma State
5	Jake Shoff	F/C	6-9	265	Jr.	TR	Alpine, Utah (Weber State)	Played has been limited after missing time with back injury
10	Terry Nashif	G	5-10	165	So.	1L	Vancouver, Wash. (Evergreen HS)	Had career bests of 10 points, 5 rebounds, 5 assists vs. Rice
14	Ricky Bower	G	6-4	185	Jr.	TR	Meridian, Idaho (Wisconsin)	His 21.2 minutes is tops among Cougar reserves; has 1 start
15	John Allen	F	6-7	215	So.	1L	Houston, Texas (Mayde HS)	Returned missionary is playing significant role off the bench
24	Kevin Woodberry	G	6-0	170	Jr.	TR	Phoenix, Ariz. (Dixie State College)	JC Transfer helped Dixie State to NJCAA title last year
32	Bart Jepsen	F	6-9	235	Jr.	2L	Roswell, N.M. (Roswell HS)	Played every game last year, tied career high 7 pts vs. Rice
40	Dan Howard	C	7-0	225	Jr.	2L	Kaysville, Utah (Davis HS)	Played key role late last year; career-best 11 pts vs. Toledo
52	Jared Jensen	F/C	6-9	250	So.	1L	West Haven, Utah (Fremont HS)	MWC Co-Freshman of the Year averaged 16.5 last week
55	Rafael Araujo	C	6-11	265	Jr.	TR	Sao Paulo, Brazil (Arizona Western College)	JC Transfer was NJCAA All-American at Arizona Western

PLANNING TO REDSHIRT

12	Marc Roberts	G	6-3	205	So.	1L	Provo, Utah (Timpview HS)	Returned missionary plans to redshirt this season
13	Austin Ainge	G	6-1	175	Fr.	HS	Gilbert, Ariz. (Highland HS)	Returned missionary plans to redshirt / out - broken thumb
34	Jermaine Odjegba	G	6-5	190	Fr.	HS	Lake Park, Fla. (Palm Beach Gardens HS)	True freshman plans to redshirt

Head Coach: Steve Cleveland , UC Irvine, 1976 (sixth season)

Associate Head Coach: Dave Rose, Houston, 1983

Assistant Coaches: Andy Toolson, BYU, 1990; John Wardenburg, BYU, 1986

Director of Basketball Operations: Nate Call, BYU, 1993

BYU PLAYER SEASON/CAREER HIGHS

#	PLAYER	POINTS	REBOUNDS	ASSISTS (^ BLOCKS)
2	HANSEN, Travis Career:	23 at Arizona State 30 at Pepperdine (2002)	12 vs. St. Bonaventure 17 at Pepperdine (2002)	5 vs. Toledo same (three times)
3	BIGELOW, Mark Career:	18 vs. Kansas State 33 at Washington State (1998-99)	5 vs. Toledo 14 (twice- 1998-99)	4 vs. Kansas State 6 (twice-1998-99)/(9 steals, BYU record)
4	LEMES, Luiz Career:	7 vs. Rice same	2 vs. Rice same	2 vs. Rice same
5	SHOFF, Jake Career:	2 vs. St. Bonaventure same	4 vs. Kansas State same	1 at Arizona State same
10	NASHIF, Terry Career:	10 vs. Rice same	5 vs. Rice same	5 vs. Rice same
12	ROBERTS, Marc Career:	- 6 at CSU (1999-00)	- 2 vs. CSU (1999-00)	- 2 at Wyoming (1999-00)
14	BOWER, Ricky Career:	10 vs. Toledo same	5 vs. St. Bonaventure same	2 vs. Kansas State, at Arizona State same
15	ALLEN, John Career:	8 at Arizona State 10 at Notre Dame (1999-00)	4 vs. St. Bonaventure same	1 vs. Toledo, Rice, at Arizona State same (four times) / ^ 1 vs. So. Ill. (99-00)
24	WOODBERRY, Kevin Career:	10 vs. Rice same	4 at Arizona State same	4 at Arizona State / (3 steals vs. Rice) same
32	JEPSEN, Bart Career:	7 vs. Rice same (three times)	2 vs. Rice 9 vs. Washington (1997-98)	- 2 - twice / ^ 3 vs. UTEP (1998-99)
40	HOWARD, Dan Career:	11 vs. Toledo same	2 vs. Toledo, Kansas St., at ASU 7 at SDSU (2002)	1 vs. Kansas State same (twice) / ^ 2 - twice (2002)
52	JENSEN, Jared Career:	18 vs. Rice 20 at Air Force (2002)	6 vs. St. Bonaventure, at ASU 10 vs. Creighton, CSUN (2002)	1 at Arizona State 2 vs. Creighton / ^ 2 (3 times)
55	ARAUJO, Rafael Career:	9 vs. Kansas St., at Arizona St. same	11 at Arizona State same	3 v. Rice, at ASU / ^ 3 at ASU / (3 steals v. Rice) same



2002-03 BYU STARTING LINEUPS

Opp.	PG	SG	SF	PF	C
v. Toledo	Woodberry	Hansen	Bigelow	Jensen	Araujo
v. KSU	Woodberry	Hansen	Bigelow	Jensen	Araujo
v. SBU	Woodberry	Bower	Bigelow	Hansen	Araujo
RICE	Woodberry	Hansen	Bigelow	Jensen	Araujo
@ASU	Woodberry	Hansen	Bigelow	Jensen	Araujo

BYU STARTING LINEUP RECORD

Woodberry, Hansen, Bigelow, Jensen, Araujo	4-0
Woodberry, Bower, Bigelow, Hansen, Araujo	1-0

BREAKDOWN BY CLASS

SENIORS (1)

Travis Hansen	G/F	6-6
---------------	-----	-----

JUNIORS (8)

Kevin Woodberry	G	6-0
Luiz Lemes	G	6-3
Ricky Bower	G	6-4
Mark Bigelow	F/G	6-7
Jake Shoff	F	6-9
Bart Jepsen	F	6-9
Rafael Araujo	C	6-11
Dan Howard	C	7-0

SOPHOMORES (4)

Terry Nashif	G	5-10
Marc Roberts	G	6-3
John Allen	F	6-7
Jared Jensen	F/C	6-9

FRESHMAN (2)

Austin Ainge	G	6-1
Jermaine Odjegba	G	6-5

BREAKDOWN BY GEOGRAPHY

UTAH (5)

Travis Hansen	Orem
Jake Shoff	Alpine
Dan Howard	Kaysville
Jared Jensen	West Haven
Marc Roberts	Provo

ARIZONA (2)

Kevin Woodberry	Phoenix
Austin Ainge	Gilbert

BRAZIL (2)

Luiz Lemes	Sao Paulo
Rafael Araujo	Sao Paulo

WASHINGTON (2)

Mark Bigelow	Olympia
Terry Nashif	Vancouver

FLORIDA (1)

Jermaine Odjegba	Lake Park
------------------	-----------

IDAHO (1)

Ricky Bower	Meridian
-------------	----------

NEW MEXICO (1)

Bart Jepsen	Roswell
-------------	---------

TEXAS (1)

John Allen	Houston
------------	---------

2002-03 ROSTER BREAKDOWN

STARTERS RETURNING (3)

Travis Hansen	G/F	6-6	(15.6 ppg, 6.2 rpg)
Mark Bigelow	F/G	6-7	(14.9 ppg, 2.7 rpg)
Jared Jensen	F/C	6-9	(8.6 ppg, 3.5 rpg)

STARTERS LOST (2)

Eric Nielsen	F	Sr.	(10.0 ppg, 5.1 rpg)
Matt Montague	G	Sr.	(6.2 ppg, 4.2 rpg, 7.2 apg)

LETTERWINNERS RETURNING (8)

Travis Hansen	G/F	6-6	(15.6 ppg, 6.2 rpg)
Mark Bigelow	F/G	6-7	(14.9 ppg, 2.7 rpg)
Jared Jensen	F/C	6-9	(8.6 ppg, 3.5 rpg)
Dan Howard	C	7-0	(1.8 ppg, 2.2 rpg)
Bart Jepsen	F	6-9	(0.9 ppg, 1.4 rpg)
Terry Nashif	G	5-10	(0.5 ppg, 0.4 rpg, 0.5 apg)
John Allen	F	6-7	(1.9 ppg, 1.2 rpg in 1999-2000)
Marc Roberts	G	6-2	(1.4 ppg, 0.5 rpg in 1999-2000)

LETTERWINNERS LOST (7)

Eric Nielsen	F	Sr.	(10.0 ppg, 5.1 rpg)
Matt Montague	G	Sr.	(6.2 ppg, 4.2 rpg, 7.2 apg)
Daniel Bobik	G	So.	(6.8 ppg, 2.2 rpg)
Jon Carlisle	C	So.	(2.4 ppg, 1.6 rpg)
Jimmy Balderson	G	Fr.	(4.0 ppg, 1.5 rpg)
Shawn Oponui	G	Fr.	(1.5 ppg, 1.0 rpg, 2.8 apg)
Jesse Pinegar	F	Fr.	(0.6 ppg, 0.4 rpg)

REDSHIRTS RETURNING (2)

Ricky Bower	G	6-4	Jr.	(Sat out last year after transferring from Wisconsin)
Jake Shoff	F/C	6-9	Jr.	(Sat out last year after transferring from Weber State)

NEWCOMERS (5)

Austin Ainge	G	6-1	Fr.	(Enrolling after serving mission right after high school)
Rafael Araujo	C	6-11	Jr.	(Signed out of Arizona Western College)
Luiz Lemes	G	6-3	Jr.	(Signed out of Eastern Oklahoma State College)
Kevin Woodberry	G	6-0	Jr.	(Signed out of Dixie State College)
Jermaine Odjegba	G	6-5	Fr.	(Joined team out of Palm Beach Gardens HS, Fla.)

RETURNING FROM LDS CHURCH MISSIONS (3)

Austin Ainge	G	6-1	160	Fr.	HS	(Served mission in Dominican Republic)
John Allen	F	6-7	210	So.	1L	(Served mission in El Salvador)
Marc Roberts	G	6-2	185	So.	1L	(Served mission in Argentina)

ON LDS CHURCH MISSIONS (4)

Garner Meads	F	6-8	Fr.	Serving mission in Edmonton, Alberta (returns for 2003-04 season)
Derek Dawes	C	6-11	So.	Serving mission in New Hampshire (returns for 2003-04 season)
Jimmy Balderson	G	6-6	So.	Serving mission in Micronesia, Guam (returns for 2004-05 season)
Sam Burgess	G	6-3	So.	Serving mission in Spokane, Wash. (returns for 2004-05 season)

NATIONAL POLLS

BYU received votes in the national polls (Nov. 25) for the first time since last season's eight-game winning streak that included a win over No. 13 Stanford. BYU received four votes (T-41st) in the latest ESPN/USA Today Coaches Poll. BYU received two votes (49th) in the latest Associated Press Poll. Creighton is rated just out of the top-25 in both polls, ranking 26th with 64 votes in the coaches poll and 26th in the AP poll with 125 votes.

SAGARIN RATINGS

BYU is rated 17th nationally in the latest Sagarin ratings, updated after Wednesday's results. The Cougars are the top-rated Mountain West Conference school with an 86.61 rating. UNLV is rated 39th (83.37), Wyoming 64th (81.12) and Utah 68th (80.91). Creighton is rated fifth in the nation in the latest Sagarin system with an 89.15 rating. The Mountain West is rated eighth as a league while the Missouri Valley is ranked 11th.



BYU MARGIN OF VICTORY/DEFEAT	
WINS	LOSSES
1 point	
2 points	
3 points	
4 points	.1
5 points	
6 points	
7 points	
8 points	
9 points	.2
10 points	
11 points	
12 points	
13 points	
14 points	
15 points	.1
16-19 points	
20-24 points	
25-29 points	
30-plus points	.1 (39)

BYU'S 2002-03 RECORD WHEN ...	
At home	.1-0
On the road	.1-0
On a neutral floor	.3-0
BYU scores 100 or more points	.0-0
BYU scores between 90-99 points	.1-0
BYU scores between 80-89 points	.0-0
BYU scores between 70-79 points	.2-0
BYU scores between 60-69 points	.2-0
BYU scores below 60 points	.0-0
Opponent scores 90 or more points	.0-0
Opponent scores between 80-89 points	.0-0
Opponent scores between 70-79 points	.0-0
Opponent scores between 60-69 points	.2-0
Opponent scores between 50-59 points	.3-0
Opponent scores below 50 points	.0-0
BYU leads at half	.3-0
Opponent leads at half	.2-0
Score tied at half	.0-0
BYU leads with 5 minutes left	.5-0
Opponent leads with 5 min. left	.0-0
BYU leads with 1 minute left	.5-0
Opponent leads with 1 min. left	.0-0
Score tied with 1 minute left	.0-0
Game goes into overtime	.0-0
BYU shoots 50 % or better	.2-0
Opponent shoots 50 % or better	.0-0
BYU out shoots opponent	.5-0
Opponent out shoots BYU	.0-0
BYU out rebounds opponent	.5-0
Opponent out rebounds BYU	.0-0
BYU and opponent tie in rebounds	.0-0
vs. top-25 ranked opponent	.0-0
vs. 2002 conference champions	.0-0
vs. 2002 postseason teams	.2-0

MORE POINTS ON POINTS ...

WHEN BYU SCORES: (CLEVELAND ERA)	
Points	Record
100 or above	2-0 (1.000)
90-99	6-0 (1.000)
80-89	23-4 (.852)
70-79	31-15 (.674)
60-69	25-23 (.521)

WHEN BYU ALLOWS: (CLEVELAND ERA)	
Points	Record
40-49	15-0 (1.000)
50-59	30-3 (.909)
60-69	27-12 (.692)
70-79	16-30 (.348)

BEST START SINCE 1991-92

After starting the season 2-0 for the fourth straight year, BYU was able to win its third contest for the first time since the 1991-92 season. At 5-0, BYU is off to its best start since the 1991-92 team won seven straight out of the gate. That team, like this year's team, was picked to finish fourth in the conference. The 1991-92 team went on to win the Western Athletic Conference title and finish 25-7 after losing to LSU and Shaquille O'Neal in the NCAA tournament.

STREAKING

BYU has won its last four games away from the Marriott Center, the team's best streak since BYU's 2001 NCAA team won five consecutive games (2 away, 3 at the MWC tournament) in March 2001. The Cougars have won five straight games overall, the longest overall streak since the Cougars won eight straight games last year during its preseason schedule. BYU defeated Creighton at home last year in the second game of the streak, which was highlighted by an upset victory over No. 13 Stanford at the Las Vegas Showdown. BYU's streak came to an end in an overtime loss at Pepperdine.

COUGARS CRUISE IN WIN OVER RICE IN HOME OPENER

Scoring 95 points against Rice Saturday, BYU improved to 8-0 under Steve Cleveland when the Cougars have scored 90 or more points. BYU defeated Rice 95-56 thanks to an 18-1 first-half run that blew the game open. Saturday's 39 point victory over Rice is the largest win for the Cougars since BYU defeated Fort Lewis College by 49 points on Dec. 12, 2001.

HANSEN STARTS SENIOR SEASON STRONG

BYU's lone senior, guard Travis Hansen, is off to a strong start in his final campaign. He leads BYU in scoring (17.0 ppg) and assists (3.0 apg) and is second in rebounding (5.4 rpg), despite being ejected with 8:48 to go in BYU's win over Kansas State. Hansen is shooting 54.2 percent (26-48) from the floor, 50 percent (5-10) from behind the three-point line (which was extended to the experimental rules distance of 20 feet, 6 inches at the Paradise Jam), and 82.4 percent (28-34) from the free throw line. He scored a season-high 23 points at ASU Wednesday, including several big shots late to help the Cougars to the win.

RECORD DEFENSE

BYU set the Paradise Jam tournament record for fewest average points allowed by giving up only 59 points per game in its three tournament wins. The previous record was LaSalle's 62.7 points allowed over three tournament games last year. In the championship game, BYU held St. Bonaventure, who came into the title showdown having scored 91 and 89 points in its first two games, to 57 points and 28 percent shooting. BYU held Toledo to 34.6 percent shooting and 56 points and allowed only 40.4 percent shooting and 64 points by Kansas State. Combined, BYU's Paradise Jam opponents shot 33.9 percent from the floor, including 31.8 percent on threes.

MORE DEFENSE

BYU has all five opponents below 42 percent shooting, and has held three of its five opponents below 35 percent shooting (ASU .413, Kansas State .404). BYU held its first four opponents below 30 percent shooting in the second half this year. ASU shot 48.5 percent in the final 20 minutes Wednesday but only 33.3 percent in the first half. BYU has held four of its five opponents this year to 60 points or less (Kansas State scored 64). BYU is 45-3 under Steve Cleveland when holding its opponents below 60 points. Against Rice Saturday, BYU held 2002 WAC Freshman of the Year forward Michael Harris, who came in averaging 13.7 points and 10.3 rebounds, including a 14-point, 10-rebound night on 7-10 shooting at Stanford, to 11 points and four boards. ASU's freshman sensation Ike Diogu was held five points below his season average.

PLAYER PERSONNEL

BYU coach Steve Cleveland is expected to play a larger rotation this year with a deeper bench available. With junior forward Jake Shoff seeing his first playing time of the year against Kansas State, all 12 players who are expected to play this year have already received playing time. Shoff hadn't played in any of BYU's exhibition contests or the opening game with Toledo due to back problems. He has had limited practice time as well since practices started in October. Sophomore guard Marc Roberts and guards Austin Ainge and Jermaine Odjegba are planning to use the season to redshirt. Ainge broke his thumb during practice three days before BYU's season opener. He had surgery in Phoenix and isn't expected to practice for another 4-6 weeks.

FROM BEHIND ARC

Prior to Wednesday's ASU game, BYU had shot 50 percent or better from three-point range in three of its first four games this year. At ASU, BYU hit only one three while attempting a season-low seven treys. All eight players to attempt a three have connected, with six players making 50 percent or better. Among those six, Mark Bigelow is 7-13, Travis Hansen 5-10, John Allen 4-6, Ricky Bower 3-5, Luiz Lemes 1-2 and Bart Jepsen 1-1. Kevin Woodberry is 4-19 and Terry Nashif 2-5 from three point range. BYU played at the experimental three-point distance of 20 feet, six inches during the Paradise Jam. BYU is shooting 44.3 percent (27-61) as a team on threes.



MEDIA RELATIONS INFORMATION

Basketball Contact: Brett Pyne
 Office Phone: (801) 422-4912
 Cell Phone: (801) 367-1631
 Home Phone: (801) 796-6867
 E-Mail: brett_pyne@byu.edu
 Assoc. AD/Director: Duff Tittle
 Office Phone: (801) 422-8948
 Home Phone: (801) 227-0746
 Email: duff_tittle@byu.edu
 Media Relations Fax: (801) 422-0633
 Pressrow Phone: (801) 378-3675
 Mailing Address: 30 SFH, Provo, UT 84602-2239

UNIVERSITY INFO

Location: Provo, Utah (84602)
 Founded: Oct. 15, 1875
 Elevation: 4,553 feet
 Enrollment: 32,122 (daytime)
 Nickname: Cougars
 Mascot: Cosmo
 Colors: Dark Blue, White and Tan
 Arena (Capacity): Marriott Center (22,700)
 Affiliation: NCAA Division I
 Conference: Mountain West Conference
 President: Merrill J. Bateman (Utah, 1960)
 Men's Athletics Director: O. Val Hale (BYU, 1981)
 Athletic Website: byucougars.com
 Tickets: 378-BYU1 or 1-800-322-BYU1

COACHING STAFF

Head Coach: Steve Cleveland
 Alma Mater (year): UC-Irvine (1976)
 Record at school (years): 90-69 (6th year)
 Career record (years): (same)
 Office phone for head coach: 801-378-3612
 Best time/day to reach coach: Call SID
 Basketball Office Fax: (801) 378-5965
 Assistant coaches (Alma Mater/year)
 Dave Rose (Houston, 1983)
 Andy Toolson (BYU, 1990)
 John Wardenburg (BYU, 1986)
 Director of Basketball Operations:
 Nate Call (BYU, 1993)

TEAM INFO

2001-2002 Overall Record: 18-12
 Conference record/finish: 7-7 (T-4th)
 2002 Postseason: (1-1)
 NIT second round - lost at Memphis
 2002 Final Ranking: N/A
 Starters Returning/Lost: 3/2
 Lettermen Returning/Lost: 8/7
 Redshirts Returning: 2
 Newcomers: 5

HISTORY – CELEBRATING 100 YEARS

First Year of Basketball: 1903
 Overall All-Time Record: 1429-922 (.608)
 Conference Championships: 25 (last 2001)
 Postseason Appearances (record): 28 (23-29)
 Total NCAA Appearances (Record): 19 (11-22)
 Last NCAA Appearance: 2001
 Result: (0-1) Lost, NCAA First Round in San Diego vs. Cincinnati, 84-59
 Total NIT Appearances (Record): 9 (12-7)
 Last NIT Appearance: 2002
 Result: (1-1) Def. UC Irvine, 78-53
 Lost, at Memphis, 80-69

COUGARS BOAST STRONG SCHEDULE

Seventeen games against teams who qualified for postseason play last year and spots in the University of The Virgin Islands Paradise Jam (U.S. Virgin Islands) and Touchstone Energy All-College Classic (Oklahoma City) highlight BYU's 2002-03 men's basketball schedule. BYU's non-conference schedule includes teams from 10 different conferences. Overall, 12 teams earned post-season bids last season, seven advancing to the NCAA tournament and five playing in the NIT. Six teams earned a conference regular season or league tournament title and 12 placed in the top three in their league standings. In all, the schedule includes a total of 29 regular season games and two exhibitions. The Cougars will play 14 regular season games in the Marriott Center, where BYU owns the nation's longest active home-court victory streak at 36 games. Excluding the MWC Tournament, BYU plays 15 road games, including 11 away contests and four neutral site games. The 2003 MWC Tournament takes place March 12-15 at the Thomas and Mack Center in Las Vegas. The Pac-10, Big 12, Atlantic 10, Big Sky, Big West, Mid-American, Mid-Continent, Missouri Valley, West Coast and Western Athletic are represented on the non-league schedule. Nine teams -- Arizona State, Creighton, San Diego, UC Santa Barbara, San Francisco, Utah State, Southern Utah, Weber State and Pepperdine -- were also on last year's nonconference schedule. BYU earned a 6-3 record in those games, losing at UCSB and dropping overtime games at both Utah State and Pepperdine.

"This year's preseason and conference schedule will be the toughest and most challenging we've encountered since my arrival at BYU. All of our games in the preseason will be against veteran teams, many with postseason experience, and eight of those games will be on the road. This is definitely the strongest and most competitive the Mountain West has been since its formation."
 - BYU Coach Steve Cleveland

BYU ON TELEVISION

The Cougars will be featured in 15 television broadcasts in 2002-03, including five times as part of the Mountain West Conference television package with ESPN. BYU will appear on ESPN2 vs. Oklahoma State in the Touchstone Energy All-College Classic in Oklahoma City on Jan. 4 and on ESPN "Big Monday" at Utah on Feb. 24. BYU appears three times on ESPN+Plus, hosting Utah Jan. 25 and New Mexico Feb. 1 before facing reigning MWC champion Wyoming in Laramie on Feb. 8. BYU will also be featured in nine SportsWest Production telecasts and on Fox Sports Net Arizona. The Mountain West Conference television agreement with ESPN will provide 32 national and regional television broadcasts on ABC, ESPN, ESPN2 and ESPN+Plus in 2002-03, including 14 appearances on ESPN, two on ESPN2, two on ABC and 12 on ESPN+Plus as the featured "Mountain West Conference Game of the Week". ESPN+Plus games in Utah are aired on KJZZ-TV, channel 14. An additional 20 MWC games are scheduled to be aired on SportsWest as point-to-point broadcasts by local affiliates, while local institutional packages will add a minimum of another 19 games in 2002-03. For the fourth consecutive season every game of the EAS Mountain West Conference Men's Basketball Championship will be televised by ESPN or ESPN+Plus.

HOME WINNING STREAK

BYU has a 37-game home court winning streak. The streak, which is a school record topping the 24 straight won between March 1994 and January 1996, is the longest current streak in the nation. BYU went 16-0 at home last season and was 15-0 the prior year. BYU has had a perfect home record seven times since the Marriott Center opened for the 1971-72 season. The past two years, however, marks the first time it has happened in back-to-back seasons. Last year's team tied the BYU single-season record with 16 home wins and was only the fourth Cougar squad to win more than 14 home games in a season. The 1987-88 Ladell Andersen squad went 16-2 in the Marriott Center. BYU's last home loss was on Feb. 17, 2000 when New Mexico edged the Cougars 78-74. BYU has won 17 straight at home over MWC teams. BYU has defeated 28 straight nonconference opponents in the Marriott Center. The last non-league foe to win in Provo was the California Bears, who edged BYU 71-70 on Dec. 19, 1998.

BREAKING THROUGH ON THE ROAD

While BYU entered this season with the nation's longest active home winning streak at 36 games (now 37), the Cougars also finished last season having lost their last 10 games away from the Marriott Center and their last 11 straight games on an opponent's home court, including three in overtime. This year, BYU has snapped both losing streaks. With its three wins at the Paradise Jam -- BYU's first win streak away from home since the end of the 2001 season, BYU ended the 10-game skid and with BYU's victory at ASU Wednesday the Cougars got the 11-game road losing streak off their backs. Last year BYU won only twice away from home. Last year's road wins were a neutral court 81-76 upset over No. 13 Stanford at the Las Vegas Showdown on Dec. 22, 2001 and a season-opening win at San Diego, 70-59, on Nov. 17.

NEUTRAL RECORD

BYU is 12-7 on a neutral court under Steve Cleveland. Last year BYU was 1-1 on a neutral floor. Prior to the Paradise Jam, BYU's last neutral court game was a 62-51 loss to San Diego State at the 2002 MWC Tournament. BYU's prior neutral win was over No. 13 Stanford, 81-76, at the Las Vegas Showdown. The Cougars have won seven of their last nine neutral court contests.



THE LAST TIME BYU HAD ...

4 PLAYERS SCORE IN DOUBLE FIGURES

11/30/02 vs. Rice Bigelow (19),
Jensen (18), Woodberry (10), Nashif (10)

5 PLAYERS SCORE IN DOUBLE FIGURES

12/28/00 at Weber State Wesley (18), Whiting
(15), Lyday (14), Hansen (12), Nielsen (12)

A PLAYER RECORD A DOUBLE-DOUBLE

11/25/02 vs. St. Bonaventure
Travis Hansen 12 points, 12 rebounds

TWO PLAYERS RECORD A DOUBLE-DOUBLE

1/23/99 vs. CS Northridge
Mark Bigelow 23 points, 11 rebounds
Nathan Cooper 15 points, 10 rebounds

TWO DOUBLE-DIGIT REBOUNDERS

11/25/02 vs. St. Bonaventure (at Paradise Jam)
Travis Hansen-12, Rafael Araujo-10

TWO PLAYERS FOULED OUT

11/22/02 vs. Toledo
Jared Jensen and Rafael Araujo

THREE PLAYERS FOULED OUT

12/22/00 vs. Iowa State (@Laie, Hawaii)
Nate Knight , Mekeli Wesley, Trent Whiting

A PLAYER EJECTED FROM THE GAME

11/23/02 vs. Kansas State
Travis Hansen (2 technical fouls)

TWO PLAYERS SCORED 20+ POINTS

12/1/01 at Utah State
Travis Hansen-26; Mark Bigelow-21

TWO PLAYERS SCORED 25+ POINTS

3/1/01 at New Mexico
Terrell Lyday-26; Mekeli Wesley-25

A PLAYER SCORED 30+ POINTS

1/5/02 at Pepperdine
Travis Hansen-30

A PLAYER WITH 5 STEALS

1/2/02 vs. San Francisco – Matt Montague

A PLAYER HAD DOUBLE-DIGIT ASSISTS

3/14/02 vs. UC Irvine
Matt Montague-12

A PLAYER 100% AT FT LINE (MIN. 8 ATTS)

3/2/02 at Colorado St. - Jared Jensen (8-8)

A PLAYER 100% FROM FLOOR (MIN. 5 ATTS)

11/30/02 vs. Rice
Jared Jensen (6-6)

A PLAYER 100% ON TREYS (MIN. 3 ATTS)

3/20/02 at Memphis – Daniel Bobik (4-4)

CELEBRATING 100 YEARS OF BASKETBALL

BYU is celebrating 100 years of basketball. Since the first season of BYU basketball in 1903, BYU entered this season having achieved a 1432-922 (.608) overall record with 21 different coaches at the helm. The combined efforts of these men have provided the Cougars with 80 winning seasons in 100 years. BYU has won 25 conference titles and made 28 postseason tournament appearances with 19 NCAA bids and nine NIT berths. The Cougars won the 1951 and 1966 NIT titles and advanced to the Elite Eight of the NCAA tournament in 1981, highlighted by Danny Ainge's length-of-the-court dash to defeat Notre Dame at the buzzer. Ainge was named the nation's top player as the John Wooden Award and Eastman Award winner. Twenty-three players have received All-America recognition while NBA teams have selected a Cougar 41 times in its annual draft. BYU has the nation's 11th longest rivalry, dating back to 1909, against the University of Utah. BYU and Utah have the 10th longest rivalry in terms of games played with 232 contests. Amazingly, the series is tied at 116-116. For more information on BYU's 100-year history, please consult the 2002-03 BYU media guide.

HANSEN, BIGELOW EARN PARADISE JAM AWARDS

Leading BYU to the University of the Virgin Islands Paradise Jam title, Travis Hansen and Mark Bigelow were named to the Paradise Jam All Tournament Team. Others selected to the team were Pervis Pasco of Kansas State, Nick Moore of Toledo, Terry Taylor of Virginia Tech and tournament MVP Marques Green of St. Bonaventure.

PARADISE JAM OFFERED OFF COURT MEMORIES

During their week in the Virgin Islands, the Cougars were able to do more than just win three games to claim the Paradise Jam title. While the coaches and players weren't able to fully take advantage of the beautiful beaches and other opportunities available on St. Thomas, the team was able to go on a Catamaran Tour, that included snorkeling, the day before its first game. One of the highlights of the trip was on Sunday. With BYU not practicing or playing that day, the entire team and extended traveling party attended church services at the local branch of the Church of Jesus Christ of Latter-day Saints. The Cougar contingency helped boost the branch attendance from its usual 20-25 to 138. It was the largest group to ever attend church services in the branch. Later that evening, the entire team returned to participate in a church fireside. During the day, BYU coach Steve Cleveland, Travis Hansen, Mark Bigelow, Dan Howard, Terry Nashif and Ricky Bower all spoke and the entire team mingled and spent time with the local members. Many church members attended BYU's games during the week, giving the Cougars a nice fan base in the 3,000-seat Sports and Fitness Center. BYU, along with the other teams in the Paradise Jam, participated in the Paradise Jam Dockside Jamboree on the evening before the tournament began. The festival, located near the dock where cruise ships come to port, included local bands, steel drum bands, mocko jumbies, local food, arts, crafts and shopping. The players had opportunities to sign autographs and Coach Cleveland was able to talk about the team and university on a live radio program being broadcast remotely from the event.

BYU VS. ITS CONFERENCE PEERS

BYU is picked to finish fourth this year in the Mountain West Conference. BYU has won 58 percent (418-299) of its games vs. its MWC opponents. As an overall athletic program, BYU has dominated the Mountain West, winning 63 percent of the titles in the league's first three seasons.

COUGARS SIGN COMBO GUARD MICHAEL ROSE

During the early signing period in November, BYU signed Michael Rose, a 6-foot-1 combo guard out of Spring Woods High School in Houston Texas. A four-year starter, Rose averaged 16.3 points, five rebounds and three assists playing shooting guard as a junior. A preseason All Greater Houston First Team selection, Rose will play point guard his senior season. He has earned first-team All-District 21 5A honors the past two seasons and was the team MVP in 2002. He has helped his team to second-place District 21 finishes the past two years. In his first season, he was named District 21 Freshman of the Year. Rose has played four years on the Houston Hoops summer AAU team that also features top-five recruits Ndidi Eby and Kendrick Perkins. As the team's starting shooting guard, Rose averaged 14 points and helped the team earn a No. 1 national rating for much of the summer. The team placed second at two of the nation's larger invitational tournaments, finishing as the runner-up at both the Nike Peach Jam in Augusta, Ga., and Nike Super Showcase in Orlando, Fla. A great shooter, Rose is one of the 16 finalists still alive in Cuttino Mobley's Clutch City Shootout. Sponsored by the Houston Rockets and generating more than 300 participants, the Shootout allows Houston-area 4A and 5A high school basketball players the opportunity to compete in a series of three-point shooting contests. Rose is scheduled to shoot at halftime of the Rockets' Jan. 13 game. Earlier this month, he connected on 14 consecutive three-point shots during a scrimmage while scoring 56 points. Rose possesses a strong academic resume, ranking second in his class of 365 seniors. He was recruited by Houston, St. Louis, Utah State, Colorado State, Texas Christian, Texas A&M, Tennessee and Illinois. With guard Travis Hansen being the only senior on this year's roster, Rose is expected to be the only player to sign with BYU during the early signing period. He is the nephew of BYU Associate Head Coach Dave Rose.



KEVIN WOODBERRY / 6-0 • 170 • junior • point guard

CAPSULE: Kevin Woodberry is a true point guard and strong defender who helped Dixie State College (St. George, Utah) to a 34-3 record and the 2002 NJCAA National Championship ... A second-team All-Scenic West Athletic Conference selection, he led the Rebels in assists (3.6), steals (2.0), three-point field goals (73) and free throw percentage (.815) ... He played at Portland as a freshman.

2002-03: Kevin has started at the point in all five games ... He had a season-high 10 points in BYU's win over Rice ... He had a season-high 4 rebounds and 4 assists at ASU Wednesday, playing a season-high 31 minutes in his hometown ... He had a season-high 3 steals vs. Rice but did not have an assist for the first game this year.



Opponent	Date	GS	Min	TOTAL		3-PTS		Pct	FT	FTA	Pct	REBOUNDS			PF	FO	A	TO	Blk	Stl	Pts	Avg		
				FG	FGA	FGA	FGA					Off	Def	Tot										
vs Toledo	11/22/02	*	29	2	7	286	1	4	250	0	0	.000	1	2	3	3.0	1	0	1	2	0	2	5	5.0
vs Kansas State	11/23/02	*	25	0	3	000	0	3	.000	2	4	.500	0	0	0	1.5	3	0	3	3	0	0	2	3.5
vs St. Bonaventure	11/25/02	*	29	3	13	231	1	7	143	1	2	.500	0	1	1	1.3	2	0	2	3	1	2	8	5.0
RICE	11/30/02	*	19	3	6	500	2	2	1,000	2	2	1,000	0	2	2	1.5	1	0	0	2	1	3	10	6.3
at Arizona State	12-04-02	*	31	1	5	.200	0	3	.000	1	5	.200	0	4	4	2.0	2	0	4	5	1	1	3	5.6
Totals			5	133	9	34	.265	4	19	.211	6	.462	1	9	10	2.0	9	0	10	15	3	8	28	5.6

Games played: 5
Points/game: 5.6
FG Pct: .265
3FG Pct: .211
FT Pct: .462

Rebounds/game: 2.0
Assists/game: 2.0
Turnovers/game: 3.0
Assist/turnover ratio: 0.7
Steals/game: 1.6
Blocks/game: 0.6

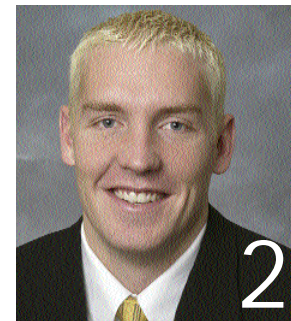
CAREER HIGHS:

POINTS: 10 vs. Rice
FG MADE: 3 vs. SBU, Rice
FG ATT: 13 vs. St. Bonaventure
FG%: .500 (3-6) vs. Rice
3FG MADE: 2 vs. Rice
3FG ATT: 7 vs. St. Bonaventure
3FG%: 1.000 (2-2) vs. Rice
FT MADE: 2 vs. Kansas State, Rice
FT ATT: 5 at Arizona State
FT %: 1.000 (2-2) vs. Rice
REB: 4 at Arizona State
ASSISTS: 3 vs. Kansas State
STEALS: 3 vs. Rice
BLOCKS: 1 vs. SBU, Rice, at ASU
MINUTES: 31 at Arizona State

TRAVIS HANSEN / 6-6 • 210 • senior • guard/forward

CAPSULE: Hansen is an MWC Player of the Year candidate entering his final season ... BYU's lone senior, he was the team's best player last year when he led the Cougars in scoring (15.6) and rebounding (6.2) ... He earned second-team All-MWC honors ... At 6-foot-6, he is an extremely athletic player who can create his own shot or knock down the three ... His explosiveness was evidenced by game highs of 30 points and 17 rebounds last year ... He is effective when slashing to the basket and has range from the three-point arc ... He shot 42.2 percent from three-point range last season ... His first season with the Cougars in 2000-01 he played a supporting role (5.5 ppg, 3.0 rpg) primarily due to a broken foot he suffered after earning a starting assignment ... He played his freshman year at Utah Valley State College before going on an LDS Church mission ... He sat out a year as a redshirt before joining the Cougars in 2000-2001.

2002-03: Hansen leads BYU in scoring (17.0) and assists (3.0) and is second in rebounding (5.4) ... He has had two of his top-five assist games this season with four assists vs. Rice and a career-tying 5 assists vs. Toledo ... He had 3 assists at ASU ... Taking only seven shots and two free throw attempts, he failed to score in double figures for the first time this year with 9 points vs. Rice, ending 11 straight double-digit games dating back to last season ... He made big plays, especially late, and responded by going 8-for-11 at ASU for a season-high 23 points ... He has reach double figures in 28 of his last 35 games ... His one rebound at ASU is the lowest single-game rebounding total since his sophomore season when he had no boards against New Mexico in 13 minutes of BYU's MWC tournament title victory over New Mexico ... Hansen had 2 boards only twice last year while averaging a team-high 6.3 rebounds per game.



Opponent	Date	GS	Min	TOTAL		3-PTS		Pct	FT	FTA	Pct	REBOUNDS			PF	FO	A	TO	Blk	Stl	Pts	Avg		
				FG	FGA	FGA	FGA					Off	Def	Tot										
vs Toledo	11/22/02	*	32	7	12	583	2	3	.667	6	6	1,000	4	4	8	8.0	3	0	5	2	0	0	22	22.0
vs Kansas State	11/23/02	*	28	6	11	545	2	2	1,000	5	8	.625	1	1	2	5.0	2	0	2	1	0	0	19	20.5
vs St. Bonaventure	11/25/02	*	35	2	7	286	0	2	.000	8	10	.800	6	6	12	7.3	1	0	1	8	1	1	12	17.7
RICE	11/30/02	*	21	3	7	429	1	1	1,000	2	2	1,000	2	2	4	6.5	2	0	4	1	1	1	9	15.5
at Arizona State	12-04-02	*	30	8	11	.727	0	2	.000	7	8	.875	0	1	1	5.4	3	0	3	5	0	0	23	17.0
Totals			5	146	26	48	.542	5	10	.500	28	.824	13	14	27	5.4	11	0	15	17	2	2	85	17.0

Games played: 5
Points/game: 17.0
FG Pct: .542
3FG Pct: .500
FT Pct: .824

Rebounds/game: 5.4
Assists/game: 3.0
Turnovers/game: 3.4
Assist/turnover ratio: 0.9
Steals/game: 0.4
Blocks/game: 0.4

CAREER HIGHS:

POINTS: 30 at Pepperdine
FG MADE: 10 at Utah St, Pepp.
FG ATT: 19 at Pepperdine
FG%: .857 (6-7) at Weber St.
3FG MADE: 3 at USU, v. SDSU
3FG ATT: 6 vs. ASU
3FG%: 1.000 (2-2) v. Wyoming, at Memphis (2002), vs. K-State
FT MADE: 10 at Pepperdine
FT ATT: 15 at San Diego
FT %: 1.000 (10-10) at Pepp.
REB: 17 at Pepperdine
ASSISTS: 5 vs. UNLV, at Memphis (2002), vs. Toledo
STEALS: 3 vs. UC Irvine, at Memphis
BLOCKS: 2 at U. San Diego
MINUTES: 43 at CSU



MARK BIGELOW / 6-7 • 195 • junior • forward/guard

CAPSULE: Bigelow is an all-conference candidate and with player-of-the-year abilities ... Despite being hampered last season by conditioning in first year back from a two-year mission layoff, Bigelow showed signs of why he was BYU's best player prior to his mission ... He put on a 31-point performance in a win over Arizona State while averaging 14.9 points and earning honorable mention All-MWC recognition in 2001-02 ... Bigelow was BYU's leading scorer (15.0) and rebounder (6.3) and WAC Pacific Division Freshman of the Year and All-WAC Second Team in 1998-99 before going on a two-year LDS Church mission to Ft. Lauderdale, Fla. ... A threat from long range, Bigelow led the Cougars last year in three-pointers made with 65 on 42.2 percent shooting and set the BYU record for consecutive games with a trey (22) ... He is an excellent shooter and extremely intelligent player ... A gifted offensive player with a great mid-range game ... He moves well without the ball.

2002-03: Bigelow reached double digits the first four games and is second on the team at 13.2 ppg... He is second on the team in assists with 12 ... He has made a team-high seven threes, including two games with multiple treys ... He had connected from long range in 11 straight games dating back to last season prior to Wednesday's victory at ASU when Bigelow did not attempt a three for the first time in his career ... He took only six shots on the night as ASU, as the Sun Devils remembered the 31 points he scored on them last year.



Mark Bigelow – 2002-03 Game-by-Game

Opponent	Date	GS	Min	TOTAL		Pct	3-PTS		Pct	FT	FTA	Pct	REBOUNDS			Avg	PF	FO	A	TO	Blk	Stl	Pts	Avg
				FG	FGA		3FG	FGA					Off	Def	Tot									
vs Toledo	11/22/02	*	33	2	6	.333	1	1	1.000	7	10	.700	0	5	5	5.0	2	0	3	3	0	1	12	12.0
vs Kansas State	11/23/02	*	35	6	12	.500	3	5	.600	3	4	.750	0	3	3	4.0	1	0	4	2	1	3	18	15.0
vs St. Bonaventure	11/25/02	*	24	4	7	.571	1	3	.333	2	2	1.000	0	2	2	3.3	4	0	2	1	1	1	11	13.7
RICE	11/30/02	*	22	7	10	.700	2	4	.500	3	4	.750	0	1	1	2.8	2	0	2	0	0	0	19	15.0
at Arizona State	12-04-02	*	30	2	6	.333	0	0	.000	2	2	1.000	0	2	2	2.6	2	0	1	1	1	1	6	13.2
Totals			5	144	21	41	.512	7	13	.538	17	.773	0	13	13	2.6	11	0	12	7	3	6	66	13.2

Games played: 5
Points/game: 13.2
FG Pct: .512
3FG Pct: .538
FT Pct: .773

Rebounds/game: 2.6
Assists/game: 2.4
Turnovers/game: 1.4
Assist/turnover ratio: 1.7
Steals/game: 1.2
Blocks/game: 0.6

CAREER HIGHS:

POINTS: 33 at Washington St.
FG MADE: 11 at Washington St.
FG ATT: 20 at Wash. St., CSUN
FG%: .800 (8-10) vs. UTEP
3FG MADE: 5 vs. La Tech, SUU
3FG ATT: 10 vs. CSUN
3FG%: .750 (3-4) at Wash. St.
FT MADE: 11 (twice)
FT ATT: 11 (twice)
FT %: 1.000 (11-11) (twice)
REB: 14 (twice)
ASSISTS: 6 (twice)
STEALS: 9 vs. Arizona (BYU record)
BLOCKS: 3 at UCSB, v. Creighton
MINUTES: 42 vs. Arizona

JARED JENSEN / 6-9 • 250 • sophomore • forward/center

CAPSULE: Jensen enters his sophomore season as a viable all-conference candidate ... He came to BYU as the most prized high school recruit from the state of Utah and proved why while earning MWC Co-Freshman of the Year honors in 2001-02 ... He is a talented offensive player in the low-post who can also score with his jumper ... He finished first in the Mountain West Conference with a team-leading 59.1 field goal percentage last year and was fourth on the team in scoring and rebounding at 8.6 points per game and 3.5 rebounds per contest ... He had season highs of 20 points and 10 rebounds while starting in 25 games ... With a year under his belt he should play a bigger role for the Cougars in 2002-03 ... At Fremont High School he earned the 2001 Deseret News Mr. Basketball Award, scoring 25.8 points and pulling down 13 rebounds per game.

2002-03: Last week Jensen shot 76.9 percent from the floor, making 10-of-13 attempts, and made 81.3 percent of his free throw attempts, going 13-for-16 from the line, to average a team-leading 16.5 points per game in BYU's victories over St. Bonaventure and Rice ... He didn't start vs. St. Bonaventure due to their guard-oriented pressing defense, but scored a team-high 15 minutes with 6 rebounds, including many key plays in the final minutes ... He returned to the starting lineup last Saturday vs. Rice and had 18 points in 18 minutes on 6-for-6 shooting while grabbing 5 boards ... He scored seven straight points to give BYU a 13 point lead as part of an 18-1 first-half run that blew open the game for the Cougars ... The last time a Cougar was perfect from the field with at least six attempts was Eric Nielsen on Feb. 24, 2001 at Utah when he also went 6-6 from the field ... He had his fourth straight double-digit scoring game at ASU and got BYU going early with 10 first-half points ... He has made 12 of his last 15 attempts from the floor and is shooting 65.5 percent on the year.



Jared Jensen – 2002-03 Game-by-Game

Opponent	Date	GS	Min	TOTAL		Pct	3-PTS		Pct	FT	FTA	Pct	REBOUNDS			Avg	PF	FO	A	TO	Blk	Stl	Pts	Avg
				FG	FGA		3FG	FGA					Off	Def	Tot									
vs Toledo	11/22/02	*	8	1	3	.333	0	0	.000	0	0	.000	0	1	1	1.0	5	1	0	1	0	0	2	2.0
vs Kansas State	11/23/02	*	20	2	4	.500	0	0	.000	6	8	.750	0	5	5	3.0	4	0	0	0	1	0	10	6.0
vs St. Bonaventure	11/25/02	*	21	4	7	.571	0	0	.000	7	8	.875	1	5	6	4.0	2	0	2	0	0	15	9.0	
RICE	11/30/02	*	18	6	6	1.000	0	0	.000	6	8	.750	1	4	5	4.3	1	0	0	1	0	1	18	11.3
at Arizona State	12-04-02	*	28	6	9	.667	0	0	.000	0	0	.000	1	5	6	4.6	4	0	1	3	0	1	12	11.4
Totals			4	95	19	29	.655	0	0	.000	19	.792	3	20	23	4.6	16	1	1	7	1	2	57	11.4

Games played: 5
Points/game: 11.4
FG Pct: .655
FT Pct: .792

Rebounds/game: 4.6
Assists/game: 0.2
Turnovers/game: 1.4
Assist/turnover ratio: 0.1
Steals/game: 0.4
Blocks/game: 0.2

CAREER HIGHS:

POINTS: 20 at Air Force (2002)
FG MADE: 6 (5 times) last at ASU
FG ATT: 10 vs. USF, at AFA
FG%: 1.000 (6-6) vs. Rice
3FG MADE: --
3FG ATT: --
3FG%: --
FT MADE: 9 vs. SDSU
FT ATT: 12 vs. SDSU
FT %: 1.000 (8-8) vs. AFA, at CSU (2002)
REB: 10 vs. Creighton, CSUN (2002)
ASSISTS: 2 vs. Creighton (2002)
STEALS: 2 vs. (four times)
BLOCKS: 2 (three times)
MINUTES: 32 at UCSB (2002)



RAFAEL ARAUJO / 6-11 • 265 • junior • center

CAPSULE: One of the top-10 junior college players in the country last year, Rafael Araujo earned second-team NJCAA All-America honors in 2001-02 at Arizona Western College ... He averaged 17.9 points and 10.7 rebounds ... He is a strong athlete with great leaping ability ... He runs the floor well and has range on the perimeter ... He played on the Brazilian National Team at the World Basketball Championships in Indianapolis.

2002-03: After a slow start in his first game, BYU's big center shown some good signs with nine points vs. Kansas State, 10 boards vs. St. Bonaventure and three assists and three steals vs. Rice ... He had his best game of the year at ASU Wednesday, setting or equaling personal bests with 9 points, 11 rebounds, 3 blocks and 3 assistsHe leads the team with 7.6 rebounds per game and is averaging 9.7 boards over the last three games.



Opponent	Date	GS	Min	TOTAL			3-PTS			REBOUNDS			Avg	PF	FO	A	TO	Blk	Stl	Pts	Avg				
				FG	FGA	Pct	3FG	FGA	Pct	FT	FTA	Pct										Off	Def	Tot	
vs Toledo	11/22/02	*	10	0	5	.000	0	0	.000	1	2	.500	2	3	5	5.0	5	1	0	4	1	0	1	1.0	
vs Kansas State	11/23/02	*	18	4	5	.800	0	0	.000	1	2	.500	0	4	4	4.5	5	1	0	3	0	1	9	5.0	
vs St. Bonaventure	11/25/02	*	18	3	5	.600	0	0	.000	1	1	1.000	3	7	10	6.3	4	0	1	0	2	0	7	5.7	
RICE	11/30/02	*	25	3	4	.750	0	0	.000	0	0	.000	1	7	8	6.8	4	0	3	3	0	3	6	5.8	
at Arizona State	12-04-02	*	27	2	6	.333	0	0	.000	5	6	.833	2	9	11	7.6	4	0	3	3	3	1	9	6.4	
Totals			5	98	12	25	.480	0	0	.000	8	11	.727	8	30	38	7.6	22	2	7	13	6	5	32	6.4

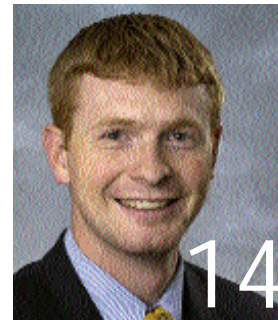
Games played: 5
Points/game: 6.4
FG Pct: 48.0
FT Pct: 72.7
Rebounds/game: 7.6
Assists/game: 1.4
Turnovers/game: 2.6
Assist/turnover ratio: 0.5
Steals/game: 1.0
Blocks/game: 1.2

CAREER HIGHS:
POINTS: 9 vs. Kansas St., at ASU
FG MADE: 4 vs. Kansas State
FG ATT: 6 at Arizona State
FG%: .800 (4-5) vs. Kansas State
3FG MADE: --
3FG ATT: --
3FG%: --
FT MADE: 5 at Arizona State
FT ATT: 6 at Arizona State
FT %: .833 (5-6) at Arizona St.
REB: 11 at Arizona State
ASSISTS: 3 vs. Rice, at ASU
STEALS: 3 vs. Rice
BLOCKS: 3 at Arizona State
MINUTES: 27 at Arizona State

RICKY BOWER / 6-4 • 185 • junior • combo guard

CAPSULE: Bower could play a key role at the point and shooting guard positions in 2002-03 ... He is a transfer from the University of Wisconsin who sat out last season as a redshirt because of NCAA transfer rules ... He is an excellent three-point shooter with good point guard skills ... He shot 44 percent from three-point range and 81 percent from the line at Wisconsin ... Despite not being allowed to play last year, he was a valuable contributor to the team with his leadership ability in practice and efforts on the scout team ... He has nice size when playing the point and has good leadership skills.

2002-03: Slowed by preseason injuries that limited his practice time, Bower has played primarily at the shooting guard position ... He played a key role in his only start vs. St. Bonaventure, helping handle the Bonnies pressure defense ... He is a primary reserve on the perimeter ... He is shooting 50 percent from the floor, including 3-5 threes, and 86.7 percent from the line ... He played a season-low 16 minutes at ASU, but hit a big shot in the corner during a BYU run.



Opponent	Date	GS	Min	TOTAL			3-PTS			REBOUNDS			Avg	PF	FO	A	TO	Blk	Stl	Pts	Avg				
				FG	FGA	Pct	3FG	FGA	Pct	FT	FTA	Pct										Off	Def	Tot	
vs Toledo	11/22/02		23	2	3	.667	2	2	1.000	4	4	1.000	1	2	3	3.0	2	0	1	2	0	0	10	10.0	
vs Kansas State	11/23/02		19	0	0	.000	0	0	.000	7	8	.875	0	4	4	3.5	1	0	2	2	0	1	7	8.5	
vs St. Bonaventure	11/25/02	*	31	1	2	.500	1	1	1.000	1	2	.500	0	5	5	4.0	2	0	1	1	0	0	4	7.0	
RICE	11/30/02		17	1	3	.333	0	1	.000	1	1	1.000	0	0	0	3.0	2	0	0	1	0	0	3	6.0	
at Arizona State	12-04-02		16	1	2	.500	0	1	.000	0	0	.000	0	0	0	2.4	3	0	2	1	0	2	2	5.2	
Totals			1	106	5	10	.500	3	5	.600	13	15	.867	1	11	12	2.4	10	0	6	7	0	3	26	5.2

Games played: 5
Points/game: 5.2
FG Pct: 50.0
3FG Pct: 60.0
FT Pct: 86.7
Rebounds/game: 2.4
Assists/game: 1.2
Turnovers/game: 1.4
Assist/turnover ratio: 0.9
Steals/game: 0.6

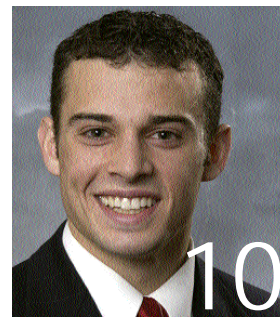
CAREER HIGHS:
POINTS: 10 vs. Toledo
FG MADE: 2 vs. Toledo
FG ATT: 3 vs. Toledo, Rice
FG%: .667 (2-3) vs. Toledo
3FG MADE: 2 vs. Toledo
3FG ATT: 2 vs. Toledo
3FG%: 1.000 (2-2) v. Toledo
FT MADE: 7 vs. Kansas State
FT ATT: 8 vs. Kansas State
FT %: .875 (7-8) vs. Kansas State
REB: 5 vs. St. Bonaventure
ASSISTS: 2 vs. Kansas St., at ASU
STEALS: 2 at Arizona State
BLOCKS: --
MINUTES: 31 vs. St. Bonaventure



TERRY NASHIF / 5-10 • 165 • sophomore • point guard

CAPSULE: Nashif appeared in 21 of 30 games last year as a freshman, averaging 2.9 minutes at the point as a reserve behind senior starter Matt Montague ... A smart player and good distributor of the ball, he has a nice shot from three-point range ... He averaged 0.5 points, 0.4 rebounds and 0.5 assists per game last year while playing one minute or less in nine of his 21 appearances ... He served a mission for the Church of Jesus Christ of Latter-day Saints after his senior year in 1999 at Evergreen High School in Vancouver, Wash.

2002-03: Reserve point guard Terry Nashif played more minutes in each of the first four games this year than he did in any game last season when he played a season high of 10 minutes twice ... He played a career-best 23 minutes vs. St. Bonaventure and had a key steal and bucket to help BYU claim the Paradise Jam title ... He also had a steal for a lay-in on the other end against Rice ... He had a career night vs. Rice, setting personal bests with 10 points, five rebounds and five assists and two steals in 19 minutes.



Terry Nashif – 2002-03 Game-by-Game

Opponent	Date	GS	Min	TOTAL		3-PTS		Pct	FT	FTA	Pct	REBOUNDS			Avg	PF	FO	A	TO	Blk	Stl	Pts	Avg		
				FG	FGA	FG	FGA					Off	Def	Tot											
vs Toledo	11/22/02	11	1	2	.500	1	1	1.000	0	0	.000	1	2	3	3.0	0	0	1	0	0	2	3	3.0		
vs Kansas State	11/23/02	12	1	2	.500	1	2	.500	0	0	.000	0	0	0	1.5	0	0	0	0	0	0	3	3.0		
vs St. Bonaventure	11/25/02	23	1	4	.250	0	1	.000	0	0	.000	0	1	1	1.3	4	0	2	1	0	2	2	2.7		
RICE	11/30/02	19	2	4	.500	0	1	.000	6	6	1.000	0	5	5	2.3	1	0	5	1	0	2	10	4.5		
at Arizona State	12-04-02	9	0	2	.000	0	0	.000	0	0	.000	0	2	2	2.2	1	0	0	2	0	1	0	3.6		
Totals			0	74	5	14	.357	2	5	.400	6	6	1.000	1	10	11	2.2	6	0	8	4	0	7	18	3.6

Games played: 5
Points/game: 3.6
FG Pct: 35.7
3FG Pct: 40.0
FT Pct: 100.0

Rebounds/game: 2.2
Assists/game: 1.6
Turnovers/game: 0.8
Assist/turnover ratio: 2.0
Steals/game: 1.4

CAREER HIGHS:

POINTS: 10 vs. Rice
FG MADE: 2 vs. Rice
FG ATT: 4 vs. SBU, Rice
FG%: .500 (2-4) vs. Rice
3FG MADE: 1 vs. Toledo, Kansas State
3FG ATT: 2 vs. Kansas State
3FG%: 1.000 (1-1) vs. Toledo
FT MADE: 6 vs. Rice
FT ATT: 6 vs. CSUN (2002), Rice
FT %: 1.000 (6-6) vs. Rice
REB: 5 vs. Rice
ASSISTS: 5 vs. Rice
STEALS: 2 vs. Toledo, St. Bonaventure, Rice
BLOCKS: --
MINUTES: 23 vs. St. Bonaventure

LUIZ LEMES / 6-4 • 180 • junior • guard

CAPSULE: A combo guard and outstanding outside shooter, Lemes enters his junior year at BYU in 2002-03 with three years to play two after transferring from Eastern Oklahoma State College in Wilburton, Okla. ... He earned first-team NJCAA All-Region 2 honors last season at EOSC ... He led the Mountaineers to back-to-back Region 2 Tournament runner-up finishes with records of 23-8 and 25-7 ... Played point guard as a freshman before being moved to the wing because of his great shooting ability ... He made 66 threes last season from the wing.

2002-03: Lemes saw limited time in BYU's first three games, without attempting a shot ... He played 20 minutes last Saturday vs. Rice, scoring his first points as a Cougar with 7 points on 3-4 shooting ... He sparked BYU's decisive first-half run vs. Rice when he stole a Rice pass and took the length of the court for a lay-up for his first bucket ... On the next offensive possession, he connected on his first three-point attempt of the year giving the Cougars a 23-17 lead ... He played four minutes at ASU.



Luiz Lemes – 2002-03 Game-by-Game

Opponent	Date	GS	Min	TOTAL		3-PTS		Pct	FT	FTA	Pct	REBOUNDS			Avg	PF	FO	A	TO	Blk	Stl	Pts	Avg	
				FG	FGA	FG	FGA					Off	Def	Tot										
vs Toledo	11/22/02	6	0	0	.000	0	0	.000	0	0	.000	0	1	1	1.0	0	0	0	0	0	0	0	0.0	
vs Kansas State	11/23/02	3	0	0	.000	0	0	.000	0	0	.000	0	1	1	1.0	0	0	1	0	0	0	0	0.0	
vs St. Bonaventure	11/25/02	2	0	0	.000	0	0	.000	0	0	.000	0	0	0	0.7	1	0	0	1	0	0	0	0.0	
RICE	11/30/02	20	3	4	.750	1	2	.500	0	2	.000	0	2	2	1.0	0	0	2	1	0	1	7	1.8	
at Arizona State	12-04-02	4	0	0	.000	0	0	.000	0	0	.000	0	0	0	0.8	0	0	0	0	0	0	0	1.4	
Totals			0	35	3	4	.750	1	2	.500	0	2	.000	0	4	4	0.8	1	0	3	2	0	7	1.4

Games played: 5
Points/game: 1.4
FG Pct: 75.0
3FG Pct: 50.0
FT Pct: 0.0

Rebounds/game: 0.8
Assists/game: 0.6
Turnovers/game: 0.4
Assist/turnover ratio: 1.5
Steals/game: 0.2

CAREER HIGHS:

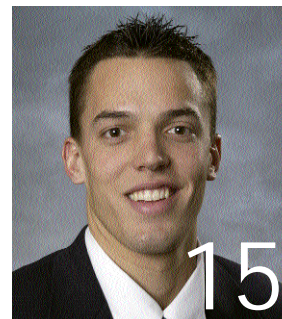
POINTS: 7 vs. Rice
FG MADE: 3 vs. Rice
FG ATT: 4 vs. Rice
FG%: .750 vs. Rice
3FG MADE: 1 vs. Rice
3FG ATT: 2 vs. Rice
3FG%: .500 (1-2) vs. Rice
FT MADE: --
FT ATT: 2 vs. Rice
FT %: .000 (0-2) vs. Rice
REB: 2 vs. Rice
ASSISTS: 2 vs. Rice
STEALS: 1 vs. Rice
BLOCKS: --
MINUTES: 20 vs. Rice



JOHN ALLEN / 6-7 • 215 • sophomore • forward

CAPSULE: Returns from two-year mission in El Salvador ... He is a good shooter who can play on the perimeter and has a nice feel inside ... He played in 18 games as a freshman at BYU in 1999-2000, averaging 1.9 points and 1.2 rebounds ... He gained more playing time as the season progressed ... He made 65 threes as team MVP at Mayde Creek High School in Houston.

2002-03: Played a career-high 23 minutes in BYU's season-opening win over Toledo ... He has also played more than his previous high of 14 minutes (vs. Notre Dame in 2000 NITquarterfinals) in the last three games ... He has scored in every game, including a season-high 8 points at ASU ... He is 4-6 on threes and hit a big three after coming in once Travis Hansen was ejected with BYU trailing vs. Kansas State ... He hit BYU's only three at ASU, going 3-4 from the floor and hitting his only trey.



John Allen – 2002-03 Game-by-Game

Opponent	Date	GS	Min	TOTAL			3-PTS			REBOUNDS			Avg	PF	FO	A	TO	Blk	Stl	Pts	Avg		
				FG	FGA	Pct	3FG	3FGA	Pct	FT	FTA	Pct										Off	Def
vs Toledo	11/22/02	23	2	4	500	1	2	500	0	0	0	0	0	0	0	0	0	0	0	0	5	5.0	
vs Kansas State	11/23/02	7	2	2	1,000	1	1	1,000	0	0	0	0	0	0	0	0	0	0	0	0	5	5.0	
vs St. Bonaventure	11/25/02	14	1	3	333	1	1	1,000	2	2	1,000	1	3	4	2.0	2	0	0	0	0	5	5.0	
RICE	11/30/02	17	0	2	000	0	1	000	2	2	1,000	1	2	3	2.3	4	0	1	2	0	2	4.3	
at Arizona State	12-04-02	19	3	4	750	1	1	1,000	1	1	1,000	0	3	3	2.4	2	0	1	0	0	8	5.0	
Totals		0	80	8	15	.533	4	6	.667	5	5	1,000	2	10	12	2.4	15	0	3	2	0	25	5.0

Games played: 5
Points/game: 5.0
FG Pct: 53.3
3FG Pct: 66.7
FT Pct: 100.0

Rebounds/game: 2.4
Assists/game: 0.6
Turnovers/game: 0.4
Assist/turnover ratio: 1.5

CAREER HIGHS:

POINTS: 10 at Notre Dame (3-22-00)
FG MADE: 4 at Notre Dame (3-22-00)
FG ATT: 5 at Notre Dame (3-22-00)
FG%: .800 (4-5) at Notre Dame (3-22-00)
3FG MADE: 2 at Notre Dame (3-22-00)
3FG ATT: 3 at Notre Dame (3-22-00)
3FG%: .667 (2-3) at Notre Dame (3-22-00)
FT MADE: 2 (four times) last vs. Rice
FT ATT: 2 (seven times) last vs. Rice
FT %: 1.000 (2-2) at Wyo, vs. SBU, vs. Rice
REB: 4 vs. St. Bonaventure
ASSISTS: 1 (four times) last at ASU
STEALS: 1 at Fla. Intl. (12-23-99)
BLOCKS: 1 vs. So. Illinois (3-20-00)
MINUTES: 23 vs. Toledo

BART JEPSEN / 6-9 • 235 • junior • forward

CAPSULE: Jepsen was a key reserve who was one of seven players to appear in all 30 games last year ... The redshirt junior has valuable experience and excellent athletic ability ... He is a solid rebounder and defender who runs the floor extremely well for a big man ... He averaged 0.9 points and 1.4 rebounds in 7.8 minutes per game last year and 1.2 points and 2.1 rebounds in 11.9 minutes as a freshman in Steve Cleveland's first season in 1997-98 while playing in 27 of 30 games, including nine starts.

2002-03: Jepsen missed his first game since his freshman season vs. St. Bonaventure due to the Bonnies guard-oriented pressing defense the entire game ... He had played in 32 straight games since not playing vs. Tulsa in the 1998 WAC Tournament in Las Vegas ... He saw limited action in BYU's first two games before playing a season-high 12 minutes vs. Rice, going a career-best 3-3 and tying his career high with 7 points ... He made the second three-pointer of his career and his first since his freshmen season in 1997-98 when he connected on his only attempt vs. Rice ... He took only one three pointer last year and is now 2-11 on threes for his career.



Bart Jepsen – 2002-03 Game-by-Game

Opponent	Date	GS	Min	TOTAL			3-PTS			REBOUNDS			Avg	PF	FO	A	TO	Blk	Stl	Pts	Avg			
				FG	FGA	Pct	3FG	3FGA	Pct	FT	FTA	Pct										Off	Def	Tot
vs Toledo	11/22/02	4	0	1	000	0	0	000	0	0	0	0	0	0	0	0	0	0	0	0	0	0.0		
vs Kansas State	11/23/02	3	0	0	000	0	0	000	0	0	0	0	0	0	0	0	0	0	0	0	0	0.0		
RICE	11/30/02	12	3	3	1,000	1	1	1,000	0	0	0	0	0	0	0.7	1	0	0	1	0	7	2.3		
at Arizona State	12-04-02	2	0	0	000	0	0	000	0	0	0	0	0	0	0.5	0	0	0	0	0	0	1.8		
Totals		0	21	3	4	.750	1	1	1,000	0	0	.000	1	1	2	0.5	2	0	0	2	0	1	7	1.8

Games played: 4
Points/game: 1.8
FG Pct: 75.0
3FG Pct: 100.0

Rebounds/game: 0.5
Turnovers/game: 0.5
Steals/game: 0.3

CAREER HIGHS:

POINTS: 7 at UNLV (98), v. SDSU (2002), vs. Rice
FG MADE: 3 at UNLV (98), v. SDSU (02), v. Rice
FG ATT: 8 at UNLV
FG%: 1.000 (3-3) vs. Rice
3FG MADE: 1 at UNLV, vs. Rice
3FG ATT: 4 at UNLV (98)
3FG%: 1.000 (1-1) vs. Rice
FT MADE: 4 vs. Air Force (98)
FT ATT: 4 vs. Air Force (98)
FT %: 1.000 (4-4) v. Air Force(98)
REB: 9 vs. Washington
ASSISTS: 2 (twice)
STEALS: 2 (twice)
BLOCKS: 3 vs. UTEP (98)
MINUTES: 35 at Tulsa (98)



JAKE SHOFF / 6-9 • 265 • junior • forward/center

CAPSULE: Shoff is a transfer from Weber State University (Ogden, Utah) who sat out last season as a redshirt because of NCAA transfer rules ... A strong physical player inside, he was third in the nation in average rebounds per minute played in 2000-01 at Weber State ... Despite not being allowed to play last year, he was able to contribute to the team's success as an effective post presence in practices and as a scout team player.

2002-03: Shoff did not practice or play for the better part of the practice season due to back problems ... He saw his first action vs. Kansas State and was active, pulling down four rebounds in his 13 minutes ... played only two minutes against the smaller, pressing defense of St. Bonaventure and was the only Cougar to not play vs. Rice ... he played on two minutes at ASU but contributed with 2 rebounds, one on the offensive end, and had 1 point.



Jake Shoff – 2002-03 Game-by-Game

Opponent	Date	GS	Min	TOTAL			3-PTS			REBOUNDS			PF	FO	A	TO	Blk	Stl	Pts	Avg			
				FG	FGA	Pct	3FG	3FGA	Pct	FT	FTA	Pct									Off	Def	Tot
vs Kansas State	11/23/02		13	0	2	.000	0	0	.000	0	0	.000	2	2	4	4.0	1	0	0	0	0	0.0	
vs St. Bonaventure	11/25/02		2	1	2	.500	0	0	.000	0	0	.000	1	0	1	2.5	0	0	0	0	2	1.0	
at Arizona State	12-04-02		2	0	0	.000	0	0	.000	1	2	.500	1	1	2	2.3	0	0	1	0	0	1.0	
Totals			0	17	1	4	.250	0	0	.000	1	2	.500	4	3	7	2.3	1	0	1	0	3	1.0

Games played: 3
Points/game: 1.0
FG Pct: 25.0
FT Pct: 50.0

Rebounds/game: 2.3
Assists/game: 0.3
Assist/turnover ratio: 99.9

CAREER HIGHS:

POINTS: 2 vs. St. Bonaventure
FG MADE: 1 vs. St. Bonaventure
FG ATT: 2 vs. St. Bonaventure
FG%: .500 (1-2) vs. SBU
3FG MADE: --
3FG ATT: --
3FG%: --
FT MADE: 1 at Arizona State
FT ATT: 2 at Arizona State
FT %: -.500 (1-2) at Arizona St.
REB: 4 vs. Kansas State
ASSISTS: 1 at Arizona State
STEALS: --
BLOCKS: --
MINUTES: 13 vs. Kansas State

DAN HOWARD / 7-0 • 225 • junior • center

CAPSULE: Howard played a key role in the second half of the season in 2001-02 and should continue to be a key contributor in the post in 2002-03 ... He appeared in 21 games, including four starts, averaging 1.8 points and 2.2 rebounds in 9.5 minutes per game last year after playing in 14 games as a freshman in limited action ... The tallest player on the roster, he plays with energy and has been a valuable defensive and rebounding presence ... He has a nice touch for a big man, shooting a career 21-33 (.636) from the floor in his two seasons, including 13-22 (.591) last year when he shared top field goal percentage honors with Jared Jensen ... Last year was his first real extended playing time since playing for Davis High School in 1996.

2002-03: Howard played a key role vs. Toledo, coming off the bench to give BYU a solid post effort with a career-high 11 points with starters Jared Jensen and Rafael Araujo both in foul trouble and ineffective ... In the first two games, Howard set or equaled career bests in seven different categories (points, field goals, field goals attempted, free throws, free throws attempted, assists and blocked shots) ... He went 2-4 vs. Rice, including a dunk, to score 4 points in his 10 minutes ... played two minutes at ASU with 2 rebounds, one on the offensive glass.



Dan Howard – 2002-03 Game-by-Game

Opponent	Date	GS	Min	TOTAL			3-PTS			REBOUNDS			PF	FO	A	TO	Blk	Stl	Pts	Avg					
				FG	FGA	Pct	3FG	3FGA	Pct	FT	FTA	Pct									Off	Def	Tot	Avg	
vs Toledo	11/22/02		21	4	6	.667	0	0	.000	3	5	.600	0	2	2	2.0	3	0	0	2	0	11	11.0		
vs Kansas State	11/23/02		17	0	3	.000	0	0	.000	0	0	.000	1	1	2	2.0	4	0	1	1	3	0	5.5		
vs St. Bonaventure	11/25/02		1	0	0	.000	0	0	.000	0	0	.000	0	0	0	1.3	1	0	0	1	0	0	3.7		
RICE	11/30/02		10	2	4	.500	0	0	.000	0	0	.000	0	0	0	1.0	1	0	0	1	1	0	4	3.8	
at Arizona State	12-04-02		2	0	0	.000	0	0	.000	0	0	.000	1	1	2	1.2	1	0	0	0	0	0	3.0		
Totals			0	51	6	13	.462	0	0	.000	3	5	.600	2	4	6	1.2	10	0	1	5	4	1	15	3.0

Games played: 5
Points/game: 3.0
FG Pct: 46.2
FT Pct: 60.0

Rebounds/game: 1.2
Assists/game: 0.2
Turnovers/game: 1.0
Assist/turnover ratio: 0.2
Steals/game: 0.2
Blocks/game: 0.8

CAREER HIGHS:

POINTS: 11 vs. Toledo
FG: 4 vs. Toledo
FGA: 6 vs. Toledo
FG%: 1.000 (3-3) v. UCR (99-00), at SDSU
3FG MADE: --
3FG ATT: --
3FG%: ---
FT MADE: 3 vs. Toledo
FT ATT: 5 vs. Toledo
FT %: 1.000 (2-2) (three times)
REB: 7 at SDSU (2002)
ASSISTS: 1 at CSU (2002), vs. Kansas State
STEALS: 1 (five times)
BLOCKS: 3 vs. Kansas State
MINUTES: 22 at CSU, v.UCI (2002)



MARK ROBERTS / 6-3 • 205 • sophomore • guard

CAPSULE: Returns from a two-year mission in Argentina ... He could redshirt while getting back in playing condition after missionary service ... He is an athletic player who has one of the best vertical leaps on the team ... He excited fans as a freshman with his slashing dunks ... He is a good defender on the perimeter ... He played in 21 games as a freshman with one start, while playing a limited 4.3 minutes per game ... He was Utah 4A Player of the Year out of Provo's Timpview High School.

2002-03: He had his knee scoped in October ... At this point, Roberts is most likely to redshirt this season.



CAREERHIGHS:

POINTS: 6 at CSU (2-24-00)
 FG MADE: 2 (twice) last vs. So. Illinois (3-20-00)
 FG ATT: 3 vs. UNLV (3-11-00)
 FG%: 1.000 (2-2) twice – last vs. So. Illinois (3-20-00)
 3FG MADE: --
 3FG ATT: 1 (twice) last at UNLV (3-11-00)
 3FG%: --
 FT MADE: 3 vs. Bowling Green (3-15-00)
 FT ATT: 4 (twice) last vs. Bowling Green (3-15-00)
 FT %: .750 (3-4) vs. Bowling Green (3-15-00)
 REB: 2 vs. CSU (1-22-00)
 ASSISTS: 2 at Wyoming (2-26-00)
 STEALS: 1 (twice) last vs. So. Illinois (3-20-00)
 BLOCKS: 1 vs. South Carolina St (12-18-99)
 MINUTES: 11 at UNLV (3-11-00)

AUSTIN AINGE / 6-1 • 175 • freshman • point guard

CAPSULE: Ainge returned from a two-year mission for the Church of Jesus Christ of Latter-day Saints in August A smart player and good leader, he is an outstanding three-point shooter with a crafty Jeff Hornacek-like runner in the lane ... He is a point guard who has a total understanding of the game and the unique ability to distribute the ball to teammates when they are ready to score ... He is the son of former BYU and NBA great and former Phoenix Suns coach Danny Ainge ... he prepped at Highland High Schol in Gilbert, Ariz., prior to serving his mission.

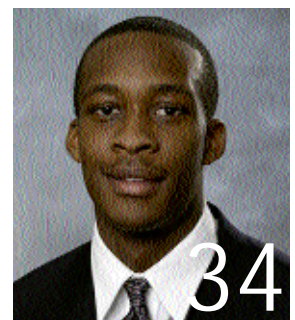
2002-03: Ainge will redshirt this year ... He broke his thumb the day before the team departed for the Paradise Jam ... He had surgery in Phoenix and will be out another four to six weeks.



JERMAINE ODJEGBA / 6-6 • 210 • junior • guard/forward

CAPSULE: Jermaine Odjegba is a true freshman who prepped at Palm Beach Gardens High School in 2001-02 ... A 6-foot-5 shooting guard, he averaged 18 points, 8 rebounds and 5 assists while earning first-team all-conference and honorable mention all-state honors.

2002-03: Odjegba will redshirt this year.

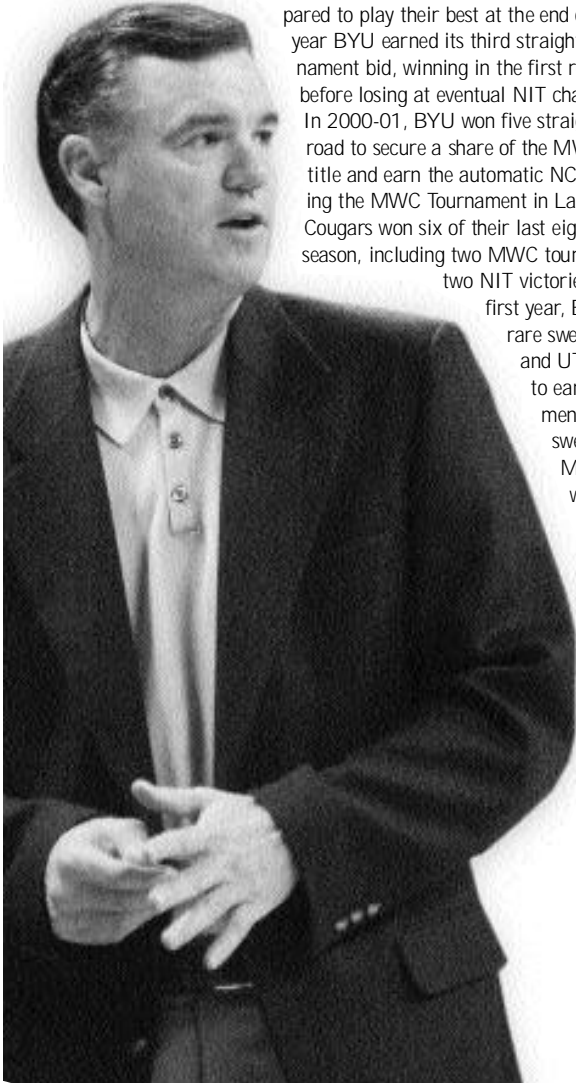


Steve Cleveland enters his sixth year at the helm of the Cougars. In his five seasons at BYU, Cleveland has proven to be a first-rate recruiter, an excellent coach and player developer, and above all, a winner.

Last year Cleveland guiding BYU to its third postseason tournament appearance in the last three years, advancing to the second round of the NIT before losing at eventual champion Memphis. In 2001, Cleveland guided BYU to its first NCAA tournament bid since 1995, its first conference regular season title since 1993 and its first conference tournament championship since 1992. While rebuilding a program that finished 1-25 before his arrival, he has posted records of 9-21, 12-16, 22-11, 24-9 and 18-12. Last year's team earned a victory over No. 13 Stanford and advanced to the NIT despite having lost four starters, six of its top seven players and 75 percent of its point production from the year before.

The 1999-2000 and 2000-2001 seasons both rank among of the school's best years ever in terms of wins. In fact, since BYU's first season in 1903, only five BYU teams have ever recorded more wins than the 24-9 team in 2000-01 and only seven have improved upon the 22-11 record in 1999-2000.

Cleveland has brought the magic of the Marriott Center back in Provo. The Cougars enter the 2002-03 season with the nation's longest home victory streak at 36 games, including back-to-back unbeaten seasons of 15-0 and 16-0. Cleveland's teams have traditionally been prepared to play their best at the end of the season. Last year BYU earned its third straight postseason tournament bid, winning in the first round of the NIT before losing at eventual NIT champion Memphis. In 2000-01, BYU won five straight games on the road to secure a share of the MWC regular season title and earn the automatic NCAA bid by claiming the MWC Tournament in Las Vegas. The Cougars won six of their last eight games the prior season, including two MWC tournament wins and two NIT victories. In Cleveland's first year, BYU completed a rare sweep of New Mexico and UTEP on the road to earn a WAC tournament berth. The road sweep of New Mexico and UTEP was the first for BYU since 1990-91 and the 83-62 upset of No.15-ranked New Mexico in the Pit ended the Lobos' 41-



game home winning streak. In Cleveland's second season the Cougars had a blowout win over UTEP before a 90-74 conference tournament upset victory over TCU to achieve BYU's first conference tournament win since 1994.

Cleveland's teams have advanced to the finals of the MWC tournament in two of the three seasons the event has been played, winning the title in 2001.

As a recruiter, Cleveland has made a similar impact on BYU's program. Cleveland's recruits have proven they are not only committed to Cleveland's vision but also are the kind of players to help make that vision a reality in Provo. Cleveland and his staff have been able to attract top talent from Utah and beyond.

Cleveland has a string of top conference newcomers. Six players have earned conference newcomer honors in Cleveland's five years as the Cougar coach, including four who have been singled out as either the conference newcomer or freshman of the year.

- Jared Jensen (2001-2002 MWC Co-Freshman of the Year)
- Trent Whiting (2000-2001 MWC Newcomer Team, 2nd Team All-MWC)
- Terrell Lyday (1999-2000 MWC Newcomer of the Year, All-Tournament Team)
- Mark Bigelow (1998-99 WAC Freshman of the Year, Newcomer Team, 2nd Team All-WAC)
- Mekeli Wesley (1997-98 WAC Newcomer Team)
- Ron Selleaze (1997-98 WAC Newcomer of the Year, Newcomer Team, 2nd Team All-WAC)

In October 2001, Cleveland signed a multi-year contract extension with BYU. Before taking the helm with the Cougars on March 11, 1997, Cleveland compiled a 157-77 record at Fresno City College in Fresno, Calif. Cleveland was named coach of the year two times while at FCC and led the Rams to post-season playoffs in each of his seven seasons in Fresno. Cleveland coached 10 years at Fresno's Clovis West High School, compiling a 180-70 record.

PLAYING CAREER

Cleveland played college basketball at UC Irvine and was the Anteaters' MVP and leading scorer his senior season in 1975-76. Prior to attending UC Irvine, Cleveland was Fresno City College's Most Outstanding Player in 1973-74. Cleveland received a B.A. degree in social science from UC Irvine in 1976, and received a Master's in education administration from Fresno Pacific in 1979.

PERSONAL

Cleveland, 50, was born in the Los Angeles area and spent most of his life in Fresno, Calif. He served a full-time mission for the Church of Jesus Christ of Latter-day Saints to England from 1971-73. Cleveland was the first head basketball or football coach at BYU to have served a church mission. Cleveland and his wife Kip have three children: sons Casey (24) and Skyler (21) and daughter Katie (12).

CLEVELAND'S BYU LEDGER

BRIGHAM YOUNG UNIVERSITY

Year	W	L	Pct.	Conf.	Conf. Tourney	NCAA/NIT
2002-2003	5	0	1.000	-	-	-
2001-2002	18	12	.600	7-7 (T-4th MWC)	0-1	1-1 NIT
2000-2001	24	9	.727	10-4 (T-1st)	3-0	0-1 NCAA
1999-2000	22	11	.667	7-7 (sixth MWC)	2-1	2-1 NIT
1998-1999	12	16	.429	6-8 (fifth WAC)	1-1	
1997-1998	9	21	.300	4-10 (sixth WAC)	0-1	
Totals	90	69	.566	34-36 (.486)	6-4 (.600)	3-3 (.500)



Individual Game Box Scores

2002-03 BYU Men's Basketball

BYU vs. Toledo @ Paradise Jam - Game #1

11/22/02 8:55 p.m.AST at St. Thomas, U.S. Virgin Islands

VISITORS: Toledo 0-1

Box score table for BYU vs Toledo, listing player stats for each team.

Summary statistics for BYU vs Toledo game, including totals and percentages.

HOME TEAM: BYU 1-0

Box score table for HOME TEAM: BYU 1-0, listing player stats.

Summary statistics for HOME TEAM: BYU 1-0 game.

Officials: (R) Karl Hess, (U) Tony Greene, Pat Adams

Technical fouls: Toledo-TEAM, BYU-None.

Attendance: 2153

Score by Periods table for BYU vs Toledo.

2002 Paradise Jam Basketball Tournament, presented by Basketball Travelers.

Points in the paint-TOL22,BY20. Points off turnovers-TOL10,BY17.

2nd chance points-TOL7,BY13. Fast break points-TOL6,BY2.

Bench points-TOL9,BY29. Score tied-1 time. Lead changes-5 times.

BYU vs. Kansas St. @ Paradise Jam - Game #2

11/23/02 6:15 p.m.AST at St. Thomas, U.S. Virgin Islands

VISITORS: BYU 2-0

Box score table for BYU vs Kansas St., listing player stats.

Summary statistics for BYU vs Kansas St. game.

HOME TEAM: Kansas State 0-1

Box score table for HOME TEAM: Kansas State 0-1, listing player stats.

Summary statistics for HOME TEAM: Kansas State 0-1 game.

Officials: (R) Mike Wood (U) Manny Upton, Keith Maxwell

Technical fouls: BYU-HANSEN, Travis, Kansas State-None.

Attendance: 13323

Score by Periods table for BYU vs Kansas St.

2002 Paradise Jam Basketball Tournament, Presented by Basketball Travelers

BYU--#2 Travis Hansen ejected at 8:48 in the second half.

Points in the paint-BY16,KANST 30. Points off turnovers-BY9,KANST 15.

2nd chance points-BY3,KANST 9. Fast break points-BY9,KANST 9.

Bench points-BY15,KANST 37. Score tied-7 times. Lead changes-4 times.



BYU vs. St. Bonaventure @ Paradise Jam - Game #3

11/25/02 8:15 p.m.AST at St. Thomas, U.S. Virgin Islands

VISITORS: St. Bonaventure 2-1

Box score table for BYU vs St. Bonaventure, listing player stats.

Summary statistics for BYU vs St. Bonaventure game.

HOME TEAM: BYU 3-0

Box score table for HOME TEAM: BYU 3-0, listing player stats.

Summary statistics for HOME TEAM: BYU 3-0 game.

Officials: (R) Karl Hess, (U) Tony Greene, Pat Adams

Technical fouls: St. Bonaventure-None, BYU-None.

Attendance: 2473

Score by Periods table for BYU vs St. Bonaventure.

Points in the paint-STBON 16,BY32. Points off turnovers-STBON 14,BY14.

2nd chance points-STBON 15,BY15. Fast break points-STBON 2,BY4.

Bench points-STBON 17,BY24. Score tied-5 times. Lead changes-7 times.

BYU vs. Rice - Game #4

11/30/02 7:05 pm at Marriott Center, Provo, UT

VISITORS: RICE 2-2

Box score table for BYU vs Rice, listing player stats.

Summary statistics for BYU vs Rice game.

HOME TEAM: BRIGHAM YOUNG Cougars 4-0

Box score table for HOME TEAM: BRIGHAM YOUNG Cougars 4-0, listing player stats.

Summary statistics for HOME TEAM: BRIGHAM YOUNG Cougars 4-0 game.

Officials: Bill Grace, Bobby McRoy, Kelly Self

Technical fouls: RICE-None, BRIGHAM YOUNG Cougars-None.

Attendance: 13323

Score by Periods table for BYU vs Rice.

Points in the paint-RICE 8,BY26. Points off turnovers-RICE 10,BY30.

2nd chance points-RICE 13,BY8. Fast break points-RICE 0,BY0.

Bench points-RICE 17,BY33. Score tied-5 times. Lead changes-4 times.

BYU @ Arizona State - Game #5

Brigham Young vs Arizona State

12-04-02 7 p.m. MST at Ned Wick Court/Wells Fargo Arena

VISITORS: Brigham Young 5-0

Box score table for BYU @ Arizona State, listing player stats.

Summary statistics for BYU @ Arizona State game.

HOME TEAM: Arizona State 4-2

Box score table for HOME TEAM: Arizona State 4-2, listing player stats.

Summary statistics for HOME TEAM: Arizona State 4-2 game.

Officials: Dave Libbey, Michael Eggers, Brian Harrison

Technical fouls: Brigham Young-None, Arizona State-None.

Attendance: 7105

Score by Periods table for BYU @ Arizona State.

Points in the paint-BY10,ASU 18. Points off turnovers-BY13,ASU 16.

2nd chance points-BY8,ASU 11. Fast break points-BY0,ASU 0.

Bench points-BY 11,ASU 18. Score tied-8 times. Lead changes-4 times.