



MEN'S VOLLEYBALL

THREE TIME NATIONAL CHAMPIONS '99, '01, '04

Athletic Communications • 30 Smith Fieldhouse • Provo, Utah • 84602 • 801-422-8948 • fax 801-422-0633

BYU Record

2005: 6-3 overall, 2-2 conference
 (2-2 home, 2-1 away, 2-0 neutral)
 All-time : 262-151 (.630) (since 1990)
 Coach Peterson: 58-14 at BYU (.814)
 310-144 career (.684)

2005 Schedule/Results

Date	Opp/Event	Time/Results
1/5	vs. Lewis @ Outrigger Tournament	W, 3-1
1/6	vs. Penn State @ Outrigger Tournament	W, 3-2
1/7	vs. Hawai'i @ Outrigger Tournament	W, 3-1
1/14	CALIFORNIA BAPTIST	L, 2-3
1/15	CALIFORNIA BAPTIST	W, 3-0
1/21	@ UC Santa Barbara*	L, 1-3
1/22	@ UC Santa Barbara*	W, 3-0
1/28	UCLA*	W, 3-1
1/29	UCLA*	L, 0-3
2/4	vs. Ball State @ Hall of Fame Classic	6 p.m.
2/5	vs. TBA @ Hall of Fame Classic	TBA
2/11	@ Pepperdine*	7 p.m.
2/12	@ Pepperdine*	7 p.m.
2/25	UC IRVINE*	7 p.m.
2/26	UC IRVINE*	7 p.m.
3/4	@ USC*	7 p.m.
3/5	@ USC*	7 p.m.
3/11	@ Pacific*	7 p.m.
3/12	@ Pacific*	7 p.m.
3/18	HAWAII*	7 p.m.
3/19	HAWAII*	7 p.m.
3/25	LONG BEACH STATE*	7 p.m.
3/26	LONG BEACH STATE*	7 p.m.
4/1	@ CS Northridge*	7 p.m.
4/2	@ CS Northridge*	7 p.m.
4/8	UC SAN DIEGO*	7 p.m.
4/9	UC SAN DIEGO*	7 p.m.
4/15	@ Stanford*	7 p.m.
4/16	@ Stanford*	7 p.m.
4/23	MPSF First Round	TBA
4/28	MPSF Semi-finals	TBA
4/30	MPSF Finals	TBA

* MPSF Opponents

**HOME MATCHES IN CAPS

Media Relations Information

Volleyball contact: Kyle Chilton
 E-mail: mvolleyball_sid@byu.edu
 Phone: (801) 422-8999

BYU COUGARS (6-3, 2-2 MPSF) at Hall of Fame Classic in Springfield, Mass.

vs. Ball State



Friday

6 p.m.

vs. Penn State or
 Springfield College



Saturday

6 or 8 p.m.

Hall of Fame Classic Next For BYU

PROVO, Utah (Feb. 1, 2005) – Coming off a split with the No. 1 ranked UCLA Bruins, the No. 4 ranked BYU Cougars will head to Springfield, Mass. for the Hall of Fame-Morgan Classic Friday and Saturday.

This marks the Cougar's first trip to the Classic, a tournament in its 18th year. BYU will play the Ball State Cardinals at 6 p.m. EST on Friday in the first round while the Penn State Nittany Lions will play the host Springfield College Pride at 8 p.m. EST. The winners will play Saturday at 8 p.m. while the losers will play in the consolation match at 6 p.m.

Ball State started the 2005 season at 3-0 but has fallen on hard times, losing three straight to Lewis, Penn State and George Mason. Outside hitter Nick Meyer leads the Cardinals with a 3.88 kills per game average. As a team, Ball State is hitting .219 on the season.

The Cougars face the possibility of playing Penn State for the second time this season. BYU defeated the No. 6 ranked Nittany Lions in a come-from-behind, five-game thriller at the Outrigger Tournament in Honolulu. Penn State is now on a five-match win streak since the loss to the Cougars.

Alex Gutor is leading the way for the Nittany Lions, averaging 3.87 kills per game. Matt Proper is not far behind, registering 3.59 kills per contest.

Springfield College, the tournament host, is the only Division III team in the pool. While the Pride has started the season at 1-4, they have been one of the dominant teams at the Division III level, winning the championship in 2002 and 2003. Brandon Mueller has averaged 5.70 kills per game in Springfield's last three matches.

Junior outside hitter is leading the way for BYU, averaging 4.20 kills per game. Senior middle blocker Michael Burke has been consistent all season, contributing 2.66 kills per game and leading the team with a .446 hitting percentage and a 1.40 blocks per game average. Against UCLA on Friday Jan. 28, he registered a career high 10 blocks, three of which were solos.

BYU will be looking to gain some momentum before jumping back into the Mountain Pacific Sports Federation race. At 6-3 overall and 2-2 in league play, the Cougars are in the middle of the pack but in good position to get to the top after a split with the No. 1 ranked UCLA Bruins.

BYU Quick Facts

Location: Provo, Utah 84602
 Enrollment: 32,122 (Daytime)
 Founded: Oct. 15, 1875, by The Church of Jesus Christ of Latter-day Saints
 Colors: Blue and White
 Nickname: Cougars
 Mascot: Cosmo (the Cougar)
 Affiliation: NCAA Division I
 Conference: Mountain Pacific Sports Federation
 Arena: Smith Fieldhouse (5,000)
 President: Cecil O. Samuelson
 Ticket Office Phone: (801) 422-BYU1 or 1-800-322-BYU1

Volleyball Staff:

Head Coach: Tom Peterson (BYU, 1978)
 BYU Record / Years: 58-14 / 3rd season
 Office Phone: (801) 422-8291
 Career Record / Years: 310-144 / 13 years
 Assistant Coaches:
 Grayson DuBose (BYU, 1993)
 Shawn Patchell (BYU, 1993)
 Volunteer Coach:
 Greg Jorgenson (Utah State, 2002)
 Trainer: Blain Empey

Volleyball Facts:

2004 Overall Record: 29-4
 Conference Record/Finish: 20-2 / 1st in MPSF
 Final National Ranking: 1st
 Record vs Top-10 teams: 16-2
 All-Time Record in NCAA Tournament Play: 7-1
 All-Time Record in MPSF Tournament Play: 15-8

2004 All-MPSF Performers:

Carlos Moreno (First Team)
 Fernando Pessoa (Second Team)
 Michael Burke (Third Team)
 Victor Batista (Honorable Mention)
 Joe Hillman (Honorable Mention)
 Jon Alleman (Honorable Mention)

2004 All-America Performers:

Carlos Moreno (First Team)
 Fernando Pessoa (First Team)
 Victor Batista (Second Team)
 Joe Hillman (Second Team)

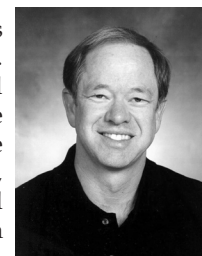
After the Hall of Fame Classic, BYU will travel to Malibu, Calif. and play No. 2 Pepperdine University, Friday and Saturday, Feb. 11 and 12. Friday's match will begin at 7 p.m. PST while Saturday's will begin at 3 p.m. PST.

BYU Numerical Roster

Num.	Name	Ht.	Wt.	Pos.	Class	Hometown
2	Bryan Stewart	6-4	190	OPP/MB	So.	Sandy, Utah
3	Michael Burke	6-8	230	MB	Sr.	Salt Lake City, Utah
4	Rob Congelliere	6-5	215	OH/LIB	Sr.	Newbury Park, Calif.
5	Brain Congelliere	6-2	190	S	Fr.	Newbury Park, Calif.
6	Matt Heyes	6-5	195	OH	So.	Salt Lake City, Utah
7	Brian Rowley	6-0	170	LIB	Jr.	Orem, Utah
8	Ivan Perez	6-4	190	OH	Fr.	Mayaguez, Puerto Rico
9	Casey Patterson	6-6	190	S/OPP	Sr.	Newbury Park, Calif.
10	Josh Edlinger	6-5	200	OPP/MB	Fr.	Lafayette, Calif.
11	Russell Holmes	6-8	185	MB	Fr.	Fountain Valley, Calif.
14	Rob Neilson	6-3	180	S	Jr.	Pacific Palisades, Calif.
15	Victor Batista	6-5	165	MB	Jr.	Tamayo, Dominican Rep.
17	Taylor Evans	6-2	175	OH/OPP	Jr.	Orem, Utah

The Peterson File

Tom Peterson, BYU alum and the 1994 NCAA Coach of the Year, enters his third year as the head coach of the Cougar men's volleyball program. Peterson led the Cougars to a 29-4 record last season and the team's third National Championship. Under his guidance, the 2004 team also won the MPSF regular season and post-season tournament, becoming only the second team in Cougar history to win both titles in the same year. In 2003, he guided BYU to second place finishes at the national championship and the MPSF regular season and a first place finish in the MPSF post-season tournament.



Peterson's career record currently stands at 309-143 with stints coaching the Penn State men's team and the women's teams at Salt Lake Community College, Utah State, and New Mexico. Before his NCAA coaching career, Peterson also coached the BYU men's club team from 1984-88.

Peterson came to BYU in 2002 with over 20 years of volleyball coaching experience, including 17 years of collegiate head-coaching experience. He is the only coach to win a National Championship at two different schools (Penn State, 1994 and BYU, 2004).

The Rankings Game

The Cougars fell from No. 3 to No. 4 in the USA Today / CSTV Top 15 Division I-II Men's Coaches Poll after splitting two home matches with MPSF foe and No. 1 ranked UCLA. BYU will potentially play the No. 6 team in the nation, Penn State, for the second time this season in the Hall of Fame Classic in Springfield, Mass.

Just Call Him the Wall

Senior middle blocker Michael Burke was a force at the net against UCLA, averaging two blocks per game, raising his average to 1.40. In Friday's win, he had a career-best 10 blocks, including another career-high three solo blocks.

Cougars Play Role of Spoiler

On Friday, Jan. 28, the No. 3 ranked BYU Cougars handed the No. 1 ranked UCLA Bruins their first loss of the season. The Cougars defeated the Bruins 3-1 in front of 5,629 fans

USA Today/CSTV Top 15 Division I-II

Rank	School (First-Place Votes)
1	UCLA (15)
2	Pepperdine (1)
3	Hawaii
4	BYU
5	Long Beach State
6	Penn State
7	UC Santa Barbara
8	Cal State Northridge
9	Pacific
10	Stanford
11	UC Irvine
12	Ohio State
13	Lewis
14	Southern California
15	George Mason

2004 BYU Men's Volleyball Team Stats

Overall record: 6-3

Conf: 2-2 Home: 2-2 Away: 2-1 Neutral: 2-0

TEAM STATISTICS	BYU	OPP				
ATTACK						
Kills	566	516				
Errors	212	199				
Total Attacks	1127	1104				
Attack Pct	.314	.287				
Kills/Game	16.2	14.7				
SET						
Assists	535	482				
Assists/Game	15.3	13.8				
SERVE						
Aces	47	45				
Errors	133	147				
Aces/Game	1.3	1.3				
SERVE RECEPTIONS						
Errors	45	47				
Errors/Game	1.3	1.3				
DEFENSE						
Digs	311	288				
Digs/Game	8.9	8.2				
BLOCKING						
Block Solo	29	26				
Block Assist	137	119				
Total Blocks	97.5	85.5				
Blocks Per Game	2.8	2.4				
Block Errors	30	28				
BALL HANDLING ERRORS						
Total	20	16				
ATTENDANCE						
Total	19,061	5,366				
Dates/Avg Per Date	4/4,765	3/1,789				
Current Win Streak	0	0				
Current Home win streak	0	0				
MATCH WINS BY #GAMES						
	3	4	5	Total		
Brigham Young	2	3	1	6		
Opponents	1	1	1	3		
GAMES WON BY GAME						
	1	2	3	4	5	Total
Brigham Young	5	4	6	4	1	20
Opponents	4	5	3	1	1	14

BYU vs BALL STATE (7-4) 3 games 4 games 5 games

Overall	1-2	3-1	3-1
In Provo	1-0	3-1	2-0
At Ball State	0-1	0-0	1-0

BYU vs PENN STATE (5-5) 3 games 4 games 5 games

Overall	0-0	4-3	1-2
Neutral	0-0	3-1	1-0
In Provo	0-0	1-1	0-2

BYU vs SPRINGFIELD COLLEGE FIRST MEETING

in the Smith Fieldhouse. BYU took the first two games before dropping the third. The Cougars fell behind in the fourth but stormed back in the end to take the match. UCLA was 7-0 and had earned the No. 1 ranking for the first time of the season earlier in the week. Saturday's loss ended BYU's six-match home win streak against the Bruins.

Evans Making the Most of Playing Time

Taylor Evans, a junior outside/opposite hitter, made the most of his return to the starting lineup by smashing a career-high 17 kills in the Cougar's Friday win and eight in the Saturday loss. He also had six digs on Friday and made several key kills to help BYU earn the win.

BYU vs. Ball State

The Cardinals and Cougars have played 11 times since BYU earned NCAA status. Ball State won the first three meetings while BYU has won seven of the last eight. The Cardinals have won the only two neutral meetings between the teams, with the last win coming March 22, 1996. Ball State started the 2005 season at 3-0 but has fallen on hard times, losing three straight to Lewis, Penn State, and George Mason. Outside hitter Nick Meyer leads the Cardinals with a 3.88 kills per game average. As a team, Ball State is hitting .219 on the season.

Penn State and Springfield

The Cougars will face either Penn State or Springfield College in the championship or consolation match of the Hall of Fame Classic. The potential matchup with the Nittany Lions would be the second meeting between the teams in 2005. BYU defeated Penn State in the Outrigger Tournament at the beginning of the season. The Lions jumped out to a 2-0 lead before the Cougars stormed back to win in five. Penn State is now on a five-match win streak since the loss to BYU. Alex Gutor is leading the way for the Nittany Lions, averaging 3.87 kills per game. Matt Proper is not far behind, registering 3.59 kills per contest. Should the Cougars meet the Pride, it would be the first meeting between the schools.



BALL STATE

Head Coach: Joel Walton

Career Record: 112-64/6

Ball State Record: same

Assistant Coach: Kevin Furnish

2004 Record: 22-9

2004 MIVA Record: 12-4

2004 Post Season: Lost to Lewis 3-2 in MIVA Final



PENN STATE

Head Coach: Mark Pavlik

Career Record: 236-79/10

Ball State Record: same

Assistant Coach: Dennis Hohenschelt

2004 Record: 23-7

2004 EIVA Record: 11-1

2004 Post Season: Lost to Long Beach State 3-2 in NCAA Semifinals



SPRINGFIELD COLLEGE

Head Coach: Charlie Sullivan

Career Record: 84-67/6

Ball State Record: same

Assistant Coach: James Seitelman, Tucker Short

2004 Record: 7-16

2004 EIVA Record: 4-8

2004 Post Season: Lost to Juniata 3-1 in EIVA Quarterfinals

**MPSF STANDINGS
(as of Feb. 1)**

TEAM	MPSF			OVERALL		
	W	L	Pct.	W	L	Pct.
Hawai'i	4	0	1.000	6	1	.857
Pepperdine	5	1	.833	5	1	.833
UC Santa Barbara	5	1	.833	5	4	.555
UCLA	4	1	.800	8	1	.889
BYU	2	2	.500	6	3	.667
Long Beach State	4	2	.667	6	3	.667
Pacific	3	3	.500	7	4	.636
CS Northridge	2	4	.333	4	5	.444
Stanford	2	4	.333	3	6	.333
UC Irvine	1	4	.200	3	7	.300
USC	1	5	.167	2	7	.222
UC San Diego	0	6	.000	0	7	.000

2005 SEASON OUTLOOK

The BYU men's volleyball team enters its third season under Tom Peterson on top of the collegiate volleyball world. The Cougars claimed the 2004 National Championship, BYU's third in six years, by defeating Long Beach State in five games. The team showed great composure in the championship match, coming back from a 10-6 deficit and two Long Beach match points in the final game to claim the match.

Even with the loss of three All-Americans and two other starters, the Cougars have reloaded and are ready to make their third straight trip to the NCAA Final Four. BYU return second team All-American Victor Batista and highly regarded middle blocker Michael Burke. With the return of two stars and a great group of young talent to replace the departed seniors, the Cougars should be able to continue their championship tradition in 2005.

The following is a position-by-position breakdown of the 2005 BYU Cougars:

OUTSIDE HITTER

Despite the loss of two starters, BYU will be strong at the outside hitter position. Victor Batista, who earned All-America honors at the middle blocker position in 2004, will be joined by a large group of players that are brimming with potential, including redshirt freshman Ivan Perez, junior Taylor Evans, senior Casey Patterson, and junior Matt Heyes. Batista led the team in blocks per game at 1.24 and total blocks with 129. He hit a career-high 18 kills on three different occasions and a recorded a career high of nine total blocks twice.

OPPOSITE

The opposite-side hitter position will be very deep for the Cougars. Evans is one of many players competing for the starting position at opposite-side hitter. He hit for a career high 15 kills last season against George Mason. Patterson returns to BYU after sitting out the 2004 season. He can also play setter and provide power on the outside.

MIDDLE BLOCKER

The middle blocker position will be thin in numbers but having a healthy Michael Burke will make the middle strong for BYU. Burke was a major contributor in 2004, leading the Cougars with a .506 hitting percentage and finishing second on the team in blocks per game at 1.17. He also earned Third-team All-MPSF honors. Redshirt freshman Russell Holmes and sophomore Bryan Stewart, a transfer student from Utah Valley State College, will join Burke in the middle.

SETTER

Junior Rob Neilson will step into the starting role vacated by AVCA National Player of the Year Carlos Moreno, who completed his athletic eligibility in 2004. Peterson is more than confident that Neilson is capable of directing the team. Neilson was the backup in 2004. In preseason action during the fall of 2004, Neilson looked confident and capable of helping preserve BYU's tradition of excellence.

LIBERO

Junior Brian Rowley, who saw limited playing time last season, will step in as the new libero. Despite limited playing time, he practiced everyday against the National Champions and performed very well. Joining Rowley will be senior Rob Congelliere.

Despite the loss of several key contributors, the Cougars will again be a very deep squad. The coaching staff will have the option of choosing from several athletes who can play more than one position to field a competitive team every match. With Burke, Batista, and Neilson having been key contributors in the National Championship run, they will be a steady influence for Cougars.

"This team has a lot of potential," Peterson said. "It will depend a lot on ball control, especially passing. If we can get some of the same magic, the same concept of team, and work hard as a team, not just as individuals, we could go a long way."



2005 Season Stats

##	STATS SUMMARY	ATTACK						SET		SERVE			DIG			BLOCKING						
		G	K	K/G	E	TA	Pct	A	A/G	SA	SE	SA/G	RE	DIG	D/G	BS	BA	Total	B/G	BE	BHE	Points
2	STEWART, Bryan	11	1	0.09	0	2	.500	0	0.00	1	2	0.09	0	0	0.00	0	0	0	0.00	0	0	2.0
3	BURKE, Michael	35	93	2.66	19	166	.446	7	0.20	5	15	0.14	0	26	0.74	9	40	49	1.40	6	1	127.0
11	HOLMES, Russell	35	60	1.71	15	111	.405	1	0.03	1	14	0.03	1	5	0.14	6	23	29	0.83	3	0	78.5
14	NEILSON, Rob	35	36	1.03	13	59	.390	478	13.66	4	17	0.11	1	51	1.46	5	19	24	0.69	2	9	54.5
15	BATISTA, Victor	35	147	4.20	64	293	.283	9	0.26	10	22	0.29	12	52	1.49	4	22	26	0.74	10	4	172.0
9	PATTERSON, Casey	33	74	2.24	32	154	.273	16	0.48	5	18	0.15	6	37	1.12	2	10	12	0.36	4	1	86.0
8	PEREZ, Ivan	33	88	2.67	38	190	.263	8	0.24	10	24	0.30	11	47	1.42	2	20	22	0.67	5	3	110.0
7	ROWLEY, Brian	35	2	0.06	1	4	.250	7	0.20	0	0	0.00	6	67	1.91	0	0	0	0.00	0	0	2.0
17	EVANS, Taylor	31	65	2.10	30	148	.236	7	0.23	9	16	0.29	3	22	0.71	1	3	4	0.13	0	1	76.5
5	CONGELLIERE, Brian	2	0	0.00	0	0	.000	2	1.00	0	0	0.00	0	1	0.50	0	0	0	0.00	0	1	0.0
6	HEYES, Matt	16	0	0.00	0	0	.000	0	0.00	2	4	0.12	0	3	0.19	0	0	0	0.00	0	0	2.0
4	CONGELLIERE, Robert	5	0	0.00	0	0	.000	0	0.00	0	1	0.00	0	0	0.00	0	0	0	0.00	0	0	0.0
TEAM																						
	BRIGHAM YOUNG COUGAR	35	566	16.17	212	1127	.314	535	15.29	47	133	1.34	45	311	8.89	29	137	97.5	2.79	30	20	710.5
	Opponents.....	35	516	14.74	199	1104	.287	482	13.77	45	147	1.29	47	288	8.23	26	119	85.5	2.44	28	16	646.5

Victor Batista • 6-6 • Opp • Junior • Tamayo, Dominican Rep.

- Punished UCSB with 23 kills in just three games while hitting .656 (23-2-32)
- Named to the Outrigger All-Tournament Team
- Starter on the 2004 National Championship team
- Second on the team with a .458 hitting percentage in 2004
- First on the team in blocks with a 1.24 per game average in 2004
- Earned Second Team All-America and All-MPSF Honorable mention honors in 2004



Season and Career Highs

Kills:
Season: 23 at UCSB, 1/22/05
Career: 23 at UCSB, 1/22/05

Attempts:
Season: 45 at UCSB, 1/21/05
Career: 45 at UCSB, 1/21/05

Hitting Percentage:
Season: .656 at UCSB, 1/22/05
Career: .857 vs. CS Northridge, 1/17/04

Digs:
Season: 9 vs. Cal Baptist, 1/14/05
Career: 9 vs. Cal Baptist, 1/14/05

Block Solos
Season: 1 (four times)
Career: 2 (four times)

Block Assists
Season: 6 at UCSB, 1/21/05
Career: 8 (twice) 4/24/04, 5/1/04

Total Blocks
Season: 6 at UCSB, 1/21/05
Career: 9 (twice) 1/24/04, 4/2/04

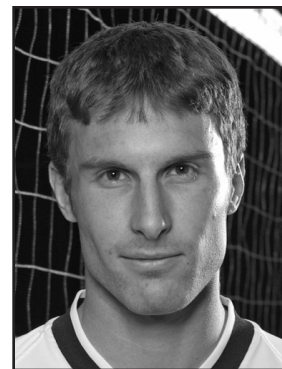
Aces:
Season: 3 at UCSB, 1/21/05
Career: 3 (twice)

#15 Victor Batista 2005 Match-by-Match Statistics

Date	Opponent	GP	ATTACK				SET	SERVE			PASS	DIG	BLOCK			Total	GEN Points
			K	E	TA	PCT		A	SA	SE			RE	BS	BA		
Jan 5, 2005	@ Outrigger Tourn (Lewis)	4	18	12	42	.143	1	1	4	0	7	0	2	0	2	20.0	
Jan 6, 2005	@ Outrigger Tourn (Penn St.)	5	15	8	42	.167	1	2	4	1	7	1	2	1	3	19.0	
Jan 7, 2005	@ Outrigger Tourn (Hawai'i)	4	21	9	37	.324	1	0	2	1	6	1	3	2	4	23.5	
Jan 14, 2005	California Baptist	5	17	6	33	.333	0	2	4	1	9	0	4	2	4	21.0	
Jan 15, 2005	California Baptist	3	11	3	16	.5001	1	0	0	0	3	0	1	0	1	11.5	
Jan 21, 2005	@ UC Santa Barbara	4	17	15	45	.044	2	3	0	1	6	0	6	0	6	23.0	
Jan 22, 2005	@ UC Santa Barbara	3	23	2	32	.656	2	2	2	2	8	1	2	1	3	27.0	
Jan 28, 2005	UCLA	4	10	5	23	.217	1	0	3	2	0	0	2	4	2	11.0	
Jan 29, 2005	UCLA	3	15	4	23	.478	0	0	3	4	6	1	0	0	1	16.0	
Feb 11, 2005	@ Pepperdine																
Feb 12, 2005	@ Pepperdine																
Feb 18, 2005	@ Hall of Fame Tourn (Ball St.)																
Feb 19, 2005	@ Hall of Fame Tourn (TBA)																
Feb 25, 2005	UC Irvine																
Feb 26, 2005	UC Irvine																
Mar 4, 2005	@ USC																
Mar 5, 2005	@ USC																
Mar 11, 2005	@ Pacific																
Mar 12, 2005	@ Pacific																
Mar 18, 2005	Hawai'i																
Mar 19, 2005	Hawai'i																
Mar 25, 2005	Long Beach State																
Mar 26, 2005	Long Beach State																
Apr 1, 2005	@ CS Northridge																
Apr 2, 2005	@ CS Northridge																
Apr 8, 2005	UC San Diego																
Apr 9, 2005	UC San Diego																
Apr 15, 2005	Stanford																
Apr 16, 2005	Stanford																
Apr 23, 2005	MPSF First Round																
Apr 28, 2005	MPSF Second Round																
Apr 30, 2005	MPSF Finals																
Totals		35	147	64	293	.283	9	10	22	12	52	4	22	10	26	172.0	

Michael Burke • 6-8 • MB • Senior • Salt Lake City, Utah

- Leads the team with .487 hitting percentage
- Named MVP of the Outrigger Tournament in Honolulu to start the 2005 season
- Led the team with a .506 hitting percentage in 2004
- Second on the team in blocks with a 1.17 per game average
- Named Third Team All-MPSF in 2004
- Hit career best .923 (12-0-13) against USC in 2004



Season and Career Highs

Kills:
Season: 16 (twice)
Career: 17 (twice) 1/21/03, 3/15/03

Attempts:
Season: 32 vs. Lewis, 1/5/05
Career: 32 vs. Lewis, 1/5/05

Hitting Percentage:
Season: .667 vs. Cal Baptist, 1/15/05
Career: .923 vs. USC, 4/15/04

Digs:
Season: 7 at Hawai'i, 1/7/05
Career: 7 at Hawai'i, 1/7/05

Block Solos
Season: 3 vs. UCLA, 1/28/05
Career: 3 vs. UCLA, 1/28/05

Block Assists
Season: 6 at Hawai'i, 1/7/05
Career: 9 vs. Penn State, 3/7/03

Total Blocks
Season: 10 vs. UCLA, 1/28/05
Career: 10 vs. UCLA, 1/28/05

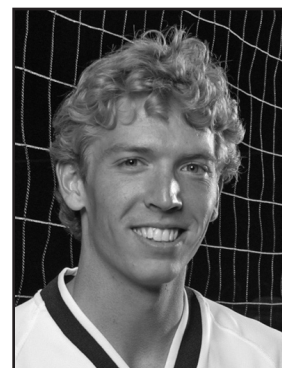
Aces:
Season: 2 vs. Cal Baptist, 1/15/05
Career: 2 (four times)

#3 Michael Burke 2005 Match-by-Match Statistics

Date	Opponent	GP	ATTACK				SET	SERVE			PASS	DIG	BLOCK			Total	GEN Points
			K	E	TA	PCT		A	SA	SE			RE	BS	BA		
Jan 5, 2005	@ Outrigger Tourn (Lewis)	4	16	4	32	.375	0	1	4	0	5	2	3	0	5	20.5	
Jan 6, 2005	@ Outrigger Tourn (Penn St.)	5	16	3	26	.500	1	1	0	0	3	0	4	1	4	19.0	
Jan 7, 2005	@ Outrigger Tourn (Hawai'i)	4	12	1	24	.458	2	0	2	0	7	0	6	0	6	15.0	
Jan 14, 2005	California Baptist	5	14	2	21	.571	0	2	1	0	0	1	5	1	6	19.5	
Jan 15, 2005	California Baptist	3	8	0	12	.667	0	1	1	0	1	2	3	0	5	12.5	
Jan 21, 2005	@ UC Santa Barbara	4	7	1	13	.462	1	0	2	0	0	0	4	0	4	9.0	
Jan 22, 2005	@ UC Santa Barbara	3	3	1	6	.333	0	0	0	0	5	1	4	0	5	6.0	
Jan 28, 2005	UCLA	4	13	4	20	.450	1	0	3	0	4	3	7	1	10	19.5	
Jan 29, 2005	UCLA	3	4	3	12	.083	2	0	2	0	1	0	4	3	4	6.0	
Feb 11, 2005	@ Pepperdine																
Feb 12, 2005	@ Pepperdine																
Feb 18, 2005	@ Hall of Fame Tourn (Ball St.)																
Feb 19, 2005	@ Hall of Fame Tourn (TBA)																
Feb 25, 2005	UC Irvine																
Feb 26, 2005	UC Irvine																
Mar 4, 2005	@ USC																
Mar 5, 2005	@ USC																
Mar 11, 2005	@ Pacific																
Mar 12, 2005	@ Pacific																
Mar 18, 2005	Hawai'i																
Mar 19, 2005	Hawai'i																
Mar 25, 2005	Long Beach State																
Mar 26, 2005	Long Beach State																
Apr 1, 2005	@ CS Northridge																
Apr 2, 2005	@ CS Northridge																
Apr 8, 2005	UC San Diego																
Apr 9, 2005	UC San Diego																
Apr 15, 2005	Stanford																
Apr 16, 2005	Stanford																
Apr 23, 2005	MPSF First Round																
Apr 28, 2005	MPSF Second Round																
Apr 30, 2005	MPSF Finals																
Totals		35	93	19	166	.446	7	5	15	0	26	9	40	6	49	127.0	

Taylor Evans • 6-2 • OH/OPP • Junior • Orem, Utah

- Saw action in 44 games in 2004
- Set a career high of 15 kills against George Mason March 27, 2004
- Went for 10 kills in the third game of BYU's win over Cal Baptist



Season and Career Highs

Kills:
Season: 17 vs. UCLA, 1/28/05
Career: 17 vs. UCLA, 1/28/05

Attempts:
Season: 39 vs. UCLA, 1/28/05
Career: 39 vs. UCLA, 1/28/05

Hitting Percentage:
Season: .571 vs. Cal Baptist, 1/15/05
Career: .571 vs. Cal Baptist, 1/15/05

Digs:
Season: 6 vs. UCLA, 1/28/05
Career: 6 vs. UCLA, 1/28/05

Block Solos
Season: 1 vs. UCLA, 1/28/05
Career: 1 (twice)

Block Assists
Season: 1 (three times)
Career: 1 (three times)

Total Blocks
Season: 2 vs. UCLA, 1/28/05
Career: 2 (twice)

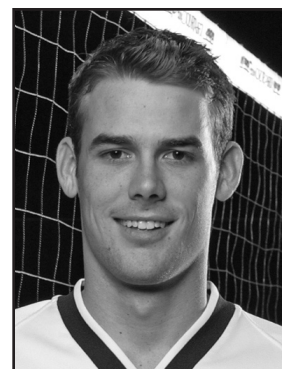
Aces:
Season: 4 vs. Lewis, 1/5/05
Career: 4 vs. Lewis, 1/5/05

#17 Taylor Evans 2005 Match-by-Match Statistics

Date	Opponent	GP	ATTACK				SET	SERVE			PASS	DIG	BLOCK			Total	GEN Points
			K	E	TA	PCT		A	SA	SE			RE	BS	BA		
Jan 5, 2005	@ Outrigger Tourn (Lewis)	4	8	5	25	.120	2	4	3	0	4	0	0	0	0	12.0	
Jan 6, 2005	@ Outrigger Tourn (Penn St.)	2	4	7	16	-.188	0	0	1	0	5	0	1	0	1	4.5	
Jan 7, 2005	@ Outrigger Tourn (Hawai'i)	4	0	0	0	.000	0	0	1	0	0	0	0	0	0	0.0	
Jan 14, 2005	California Baptist	5	0	3	9	-.333	0	0	2	1	2	0	0	0	0	0.0	
Jan 15, 2005	California Baptist	3	10	2	14	.571	0	0	1	0	2	0	1	0	1	10.5	
Jan 21, 2005	@ UC Santa Barbara	3	5	1	6	.667	1	1	2	1	1	0	0	0	0	6.0	
Jan 22, 2005	@ UC Santa Barbara	3	13	3	22	.455	2	3	2	1	1	0	0	0	0	16.0	
Jan 28, 2005	UCLA	4	17	6	39	.282	1	1	3	0	6	1	1	0	2	19.5	
Jan 29, 2005	UCLA	3	8	3	17	.294	1	0	1	0	1	0	0	0	0	8.0	
Feb 11, 2005	@ Pepperdine																
Feb 12, 2005	@ Pepperdine																
Feb 18, 2005	@ Hall of Fame Tourn (Ball St.)																
Feb 19, 2005	@ Hall of Fame Tourn (TBA)																
Feb 25, 2005	UC Irvine																
Feb 26, 2005	UC Irvine																
Mar 4, 2005	@ USC																
Mar 5, 2005	@ USC																
Mar 11, 2005	@ Pacific																
Mar 12, 2005	@ Pacific																
Mar 18, 2005	Hawai'i																
Mar 19, 2005	Hawai'i																
Mar 25, 2005	Long Beach State																
Mar 26, 2005	Long Beach State																
Apr 1, 2005	@ CS Northridge																
Apr 2, 2005	@ CS Northridge																
Apr 8, 2005	UC San Diego																
Apr 9, 2005	UC San Diego																
Apr 15, 2005	Stanford																
Apr 16, 2005	Stanford																
Apr 23, 2005	MPSF First Round																
Apr 28, 2005	MPSF Second Round																
Apr 30, 2005	MPSF Finals																
Totals		31	65	30	148	.236	7	9	16	3	22	1	3	0	4	76.5	

Russell Holmes • 6-8 • MB • Freshman • Fountain Valley, Calif.

- Sat out 2004 as a redshirt
- Set a career-high of 14 kills in win over Penn State at the Outrigger Tournament
- Hit for a career-high .538 (9-2-13) hitting percentage against Cal Baptist (Jan. 14, 2005)



Season and Career Highs

Kills:
Season: 14 vs. Penn State, 1/6/05
Career: 14 vs. Penn State, 1/6/05

Attempts:
Season: 30 vs. Penn State, 1/6/05
Career: 30 vs. Penn State, 1/6/05

Hitting Percentage:
Season: .818 at UCSB, 1/21/05
Career: .818 at UCSB, 1/21/05

Digs:
Season: 2 vs. Cal Baptist, 1/14/05
Career: 2 vs. Cal Baptist, 1/14/05

Block Solos
Season: 3 at UCSB, 1/22/05
Career: 3 at UCSB, 1/22/05

Block Assists
Season: 4 (twice)
Career: 4 (twice)

Total Blocks
Season: 5 (twice)
Career: 5 (twice)

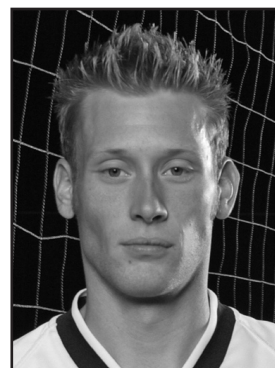
Aces:
Season: 1 vs. Lewis, 1/5/05
Career: 1 vs. Lewis, 1/5/05

#11 Russell Holmes 2005 Match-by-Match Statistics

Date	Opponent	GP	ATTACK				SET	SERVE			PASS	DIG	BLOCK			Total	GEN Points
			K	E	TA	PCT		A	SA	SE			RE	BS	BA		
Jan 5, 2005	@ Outrigger Tourn (Lewis)	4	9	2	14	.500	1	1	2	0	0	0	2	0	2	11.0	
Jan 6, 2005	@ Outrigger Tourn (Penn St.)	5	14	4	30	.333	0	0	4	0	1	0	3	0	3	15.5	
Jan 7, 2005	@ Outrigger Tourn (Hawai'i)	4	5	3	12	.167	0	0	1	0	0	1	4	0	5	8.0	
Jan 14, 2005	California Baptist	5	9	2	13	.538	0	0	0	1	1	1	2	0	3	11.0	
Jan 15, 2005	California Baptist	3	1	1	5	.000	0	0	0	0	2	0	4	1	4	3.0	
Jan 21, 2005	@ UC Santa Barbara9	4	9	0	11	.818	0	0	1	0	0	0	3	0	3	10.5	
Jan 22, 2005	@ UC Santa Barbara	3	4	0	6	.667	0	0	4	0	1	3	2	0	5	8.0	
Jan 28, 2005	UCLA	4	6	2	14	.286	0	0	1	0	0	0	1	1	1	6.5	
Jan 29, 2005	UCLA	3	3	1	6	.333	0	0	1	0	0	1	2	1	3	5.0	
Feb 11, 2005	@ Pepperdine																
Feb 12, 2005	@ Pepperdine																
Feb 18, 2005	@ Hall of Fame Tourn (Ball St.)																
Feb 19, 2005	@ Hall of Fame Tourn (TBA)																
Feb 25, 2005	UC Irvine																
Feb 26, 2005	UC Irvine																
Mar 4, 2005	@ USC																
Mar 5, 2005	@ USC																
Mar 11, 2005	@ Pacific																
Mar 12, 2005	@ Pacific																
Mar 18, 2005	Hawai'i																
Mar 19, 2005	Hawai'i																
Mar 25, 2005	Long Beach State																
Mar 26, 2005	Long Beach State																
Apr 1, 2005	@ CS Northridge																
Apr 2, 2005	@ CS Northridge																
Apr 8, 2005	UC San Diego																
Apr 9, 2005	UC San Diego																
Apr 15, 2005	Stanford																
Apr 16, 2005	Stanford																
Apr 23, 2005	MPSF First Round																
Apr 28, 2005	MPSF Second Round																
Apr 30, 2005	MPSF Finals																
Totals		35	60	15	111	.405	1	1	14	1	5	6	23	3	29	78.5	

Casey Patterson • 6-6 • Setter • Senior • Newbury Park, Calif.

- Set career highs of 19 kills, a .457 hitting percentage, and 10 digs against Hawai'i in the Outrigger Tournament, Jan. 7, 2005
- Named to the Outrigger All-Tournament Team
- Played for the Cougars in 2002 and 2003 and sat out the 2004 season
- Can play setter, outside hitter, and opposite side hitter



Season and Career Highs

Kills:
Season: 19 at Hawai'i, 1/7/05
Career: 19 at Hawai'i, 1/7/05

Hitting Percentage:
Season: .457 at Hawai'i, 1/7/05
Career: .457 at Hawai'i, 1/7/05

Assists
Season: 5 at Hawai'i, 1/7/05
Career: 15 vs. Concordia, 3/5/03

Digs:
Season: 10 at Hawai'i, 1/7/05
Career: 10 at Hawai'i, 1/7/05

Block Solos
Season: 1 (twice)
Career: 1 (twice)

Block Assists
Season: 3 (twice)
Career: 3 (twice)

Total Blocks
Season: 3 (twice)
Career: 3 (twice)

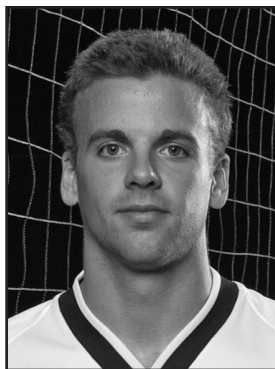
Aces:
Season: 3 vs. Penn State, 1/6/05
Career: 3 vs. Penn State, 1/6/05

#9 Casey Patterson 2005 Match-by-Match Statistics

Date	Opponent	GP	ATTACK				PCT	SET			SERVE			PASS			BLOCK				Total	GEN Points
			K	E	TA			A	SA	SE	RE	DIG	BS	BA	BE							
Jan 5, 2005	@ Outrigger Tourn (Lewis)	3	6	3	13	.231	2	0	3	1	6	0	2	0	2	0	2	0	0	0	2	8.0
Jan 6, 2005	@ Outrigger Tourn (Penn St.)	5	15	6	29	.310	3	3	2	3	5	0	0	0	0	0	0	0	0	0	18.0	
Jan 7, 2005	@ Outrigger Tourn (Hawai'i)	4	19	3	35	.457	5	1	3	0	10	0	3	2	3	2	3	2	3	2	21.5	
Jan 14, 2005	California Baptist	5	10	5	26	.192	3	0	1	2	4	1	1	0	2	1	1	0	2	2	11.5	
Jan 15, 2005	California Baptist	3	6	3	12	.250	2	0	2	0	5	0	3	1	3	7.5					7.5	
Jan 21, 2005	@ UC Santa Barbara	4	9	7	19	.105	1	1	2	0	3	1	0	0	1	11.0					11.0	
Jan 22, 2005	@ UC Santa Barbara	3	0	0	0	.000	0	0	2	0	0	0	0	0	0	0.0					0.0	
Jan 28, 2005	UCLA	4	4	2	7	.286	0	0	2	0	3	0	0	0	0	4.0					4.0	
Jan 29, 2005	UCLA	3	5	3	13	.154	0	0	1	0	1	0	1	0	1	5.5					5.5	
Feb 11, 2005	@ Pepperdine																					
Feb 12, 2005	@ Pepperdine																					
Feb 18, 2005	@ Hall of Fame Tourn (Ball St.)																					
Feb 19, 2005	@ Hall of Fame Tourn (TBA)																					
Feb 25, 2005	UC Irvine																					
Feb 26, 2005	UC Irvine																					
Mar 4, 2005	@ USC																					
Mar 5, 2005	@ USC																					
Mar 11, 2005	@ Pacific																					
Mar 12, 2005	@ Pacific																					
Mar 18, 2005	Hawai'i																					
Mar 19, 2005	Hawai'i																					
Mar 25, 2005	Long Beach State																					
Mar 26, 2005	Long Beach State																					
Apr 1, 2005	@ CS Northridge																					
Apr 2, 2005	@ CS Northridge																					
Apr 8, 2005	UC San Diego																					
Apr 9, 2005	UC San Diego																					
Apr 15, 2005	Stanford																					
Apr 16, 2005	Stanford																					
Apr 23, 2005	MPSF First Round																					
Apr 28, 2005	MPSF Second Round																					
Apr 30, 2005	MPSF Finals																					
Totals		33	74	32	154	.273	16	5	18	6	37	2	10	4	12	86.0						

Rob Neilson • 6-3 • Setter • Junior • Pacific Palisades, Calif.

- Had a career-high 68 assists versus Penn State Jan. 6, 2005 in the Outrigger Tournament
- Had nine digs in back-to-back matches against Hawai'i and Cal Baptist
- Played in 104 games in 2004, mostly as a serving and defensive specialist
- Started two matches, one against Ohio State and the other against George Mason
- Will start at setter in 2005



Season and Career Highs

Kills:
Season: 7 vs. Penn State, 1/6/05
Career: 7 vs. Penn State, 1/6/05

Hitting Percentage:
Season: .500 vs. Penn State, 1/6/05
Career: .571 at Ohio State, 1/23/04

Assists:
Season: 68 vs. Penn State, 1/6/05
Career: 68 vs. Penn State, 1/6/05

Digs:
Season: 9 at Hawai'i, 1/7/05
Career: 9 at Hawai'i, 1/7/05

Block Solos
Season: 2 vs. Lewis, 1/5/05
Career: 2 vs. Lewis, 1/5/05

Block Assists
Season: 4 (twice)
Career: 4 (twice)

Total Blocks
Season: 4 (three times)
Career: 4 (three times)

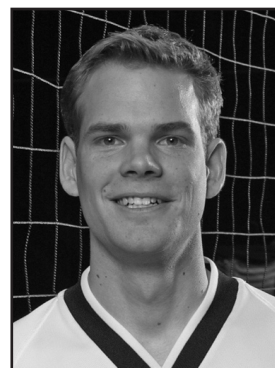
Aces:
Season: 3 at UCSB, 1/21/05
Career: 3 at UCSB, 1/21/05

#14 Rob Neilson 2005 Match-by-Match Statistics

Date	Opponent	GP	ATTACK				PCT	SET			SERVE			PASS			BLOCK				Total	GEN Points
			K	E	TA			A	SA	SE	RE	DIG	BS	BA	BE							
Jan 5, 2005	@ Outrigger Tourn (Lewis)	4	5	2	7	.429	51	0	2	0	7	2	1	0	3	7.5					7.5	
Jan 6, 2005	@ Outrigger Tourn (Penn St.)	5	7	1	12	.500	68	0	3	0	6	0	3	0	3	8.5					8.5	
Jan 7, 2005	@ Outrigger Tourn (Hawai'i)	4	6	2	9	.444	58	0	2	0	9	0	4	0	4	8.0					8.0	
Jan 14, 2005	California Baptist	5	3	3	7	.000	61	0	1	0	9	0	1	1	1	3.5					3.5	
Jan 15, 2005	California Baptist	3	2	0	3	.667	44	0	0	0	2	1	1	0	2	3.5					3.5	
Jan 21, 2005	@ UC Santa Barbara	4	2	1	4	.250	59	3	1	0	6	0	1	0	1	5.5					5.5	
Jan 22, 2005	@ UC Santa Barbara	3	2	0	3	.667	45	1	3	0	4	0	4	0	4	5.0					5.0	
Jan 28, 2005	UCLA	4	6	3	9	.333	56	0	4	0	7	1	3	1	4	8.5					8.5	
Jan 29, 2005	UCLA	3	3	1	5	.400	36	0	1	1	1	1	1	1	2	4.5					4.5	
Feb 11, 2005	@ Pepperdine																					
Feb 12, 2005	@ Pepperdine																					
Feb 18, 2005	@ Hall of Fame Tourn (Ball St.)																					
Feb 19, 2005	@ Hall of Fame Tourn (TBA)																					
Feb 25, 2005	UC Irvine																					
Feb 26, 2005	UC Irvine																					
Mar 4, 2005	@ USC																					
Mar 5, 2005	@ USC																					
Mar 11, 2005	@ Pacific																					
Mar 12, 2005	@ Pacific																					
Mar 18, 2005	Hawai'i																					
Mar 19, 2005	Hawai'i																					
Mar 25, 2005	Long Beach State																					
Mar 26, 2005	Long Beach State																					
Apr 1, 2005	@ CS Northridge																					
Apr 2, 2005	@ CS Northridge																					
Apr 8, 2005	UC San Diego																					
Apr 9, 2005	UC San Diego																					
Apr 15, 2005	Stanford																					
Apr 16, 2005	Stanford																					
Apr 23, 2005	MPSF First Round																					
Apr 28, 2005	MPSF Second Round																					
Apr 30, 2005	MPSF Finals																					
Totals		35	36	13	59	.390	478	4	17	1	51	5	19	2	24	54.5						

Brian Rowley • 6-0 • LIB • Junior • Orem, Utah

- Set a career high with 12 digs against Cal Baptist, Jan. 14, 2005
- Has not had a service reception error since the first match of the season, a streak of four matches, 17 games, and 106 receptions



Season and Career Highs

Kills:
 Season: 1 (twice)
 Career: 1 (twice)

Attempts:
 Season: 1 (twice)
 Career: 1 (twice)

Hitting Percentage:
 Season: 1.000 (twice)
 Career: 1.000 (twice)

Digs:
 Season: 12 vs. Cal Baptist, 1/14/05
 Career: 12 vs. Cal Baptist, 1/14/05

Block Solos
 Season: N/A
 Career: N/A

Block Assists
 Season: N/A
 Career: N/A

Total Blocks
 Season: N/A
 Career: N/A

Aces:
 Season: N/A
 Career: N/A

#7 Brian Rowley		2005 Match-by-Match Statistics															
Date	Opponent	GP	ATTACK				SET	SERVE			PASS	DIG	BLOCK			Total	GEN Points
			K	E	TA	PCT		A	SA	SE			RE	BS	BA		
Jan 5, 2005	@ Outrigger Tourn (Lewis)	4	0	0	1	.000	1	0	0	2	7	0	0	0	0	0	0.0
Jan 6, 2005	@ Outrigger Tourn (Penn St.)	5	1	0	1	1.000	3	0	0	0	10	0	0	0	0	1.0	
Jan 7, 2005	@ Outrigger Tourn (Hawai'i)	4	0	0	0	.000	1	0	0	0	9	0	0	0	0	0.0	
Jan 14, 2005	California Baptist	5	0	1	1	-1.000	1	0	0	0	12	0	0	0	0	0.0	
Jan 15, 2005	California Baptist	3	0	0	0	.000	0	0	0	0	6	0	0	0	0	0.0	
Jan 21, 2005	@ UC Santa Barbara	4	1	0	1	1.000	1	0	0	2	6	0	0	0	0	1.0	
Jan 22, 2005	@ UC Santa Barbara	3	0	0	0	.000	0	0	0	1	1	0	0	0	0	0.0	
Jan 28, 2005	UCLA	4	0	0	0	.000	0	0	0	1	9	0	0	0	0	0.0	
Jan 29, 2005	UCLA	3	0	0	0	.000	0	0	0	0	7	0	0	0	0	0.0	
Feb 11, 2005	@ Pepperdine																
Feb 12, 2005	@ Pepperdine																
Feb 18, 2005	@ Hall of Fame Tourn (Ball St.)																
Feb 19, 2005	@ Hall of Fame Tourn (TBA)																
Feb 25, 2005	UC Irvine																
Feb 26, 2005	UC Irvine																
Mar 4, 2005	@ USC																
Mar 5, 2005	@ USC																
Mar 11, 2005	@ Pacific																
Mar 12, 2005	@ Pacific																
Mar 18, 2005	Hawai'i																
Mar 19, 2005	Hawai'i																
Mar 25, 2005	Long Beach State																
Mar 26, 2005	Long Beach State																
Apr 1, 2005	@ CS Northridge																
Apr 2, 2005	@ CS Northridge																
Apr 8, 2005	UC San Diego																
Apr 9, 2005	UC San Diego																
Apr 15, 2005	Stanford																
Apr 16, 2005	Stanford																
Apr 23, 2005	MPSF First Round																
Apr 28, 2005	MPSF Second Round																
Apr 30, 2005	MPSF Finals																
Totals		35	2	1	4	.250	7	0	0	6	67	0	0	0	0	2.0	

Ivan Perez • 6-4 • OH • Freshman • Mayaguez, Puerto Rico

- Had 15 and 12 kills in two matches versus Cal Baptist with 15 being a career high
- Hit .435 (27-7-46) against Cal Baptist



Season and Career Highs

Kills:
 Season: 17 at UCSB, 1/21/05
 Career: 17 at UCSB, 1/21/05

Attempts:
 Season: 36 at UCSB, 1/21/05
 Career: 36 at UCSB, 1/21/05

Hitting Percentage:
 Season: .450 vs. Cal Baptist, 1/15/05
 Career: .450 vs. Cal Baptist, 1/15/05

Digs:
 Season: 13 at UCSB, 1/21/05
 Career: 13 at UCSB, 1/21/05

Block Solos
 Season: 1 (twice)
 Career: 1 (twice)

Block Assists
 Season: 4 vs. UCLA, 1/28/05
 Career: 4 vs. UCLA, 1/28/05

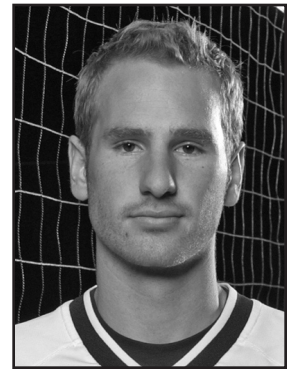
Total Blocks
 Season: 4 (twice)
 Career: 4 (twice)

Aces:
 Season: 2 (three times)
 Career: 2 (three times)

#8 Ivan Perez		2005 Match-by-Match Statistics															
Date	Opponent	GP	ATTACK				SET	SERVE			PASS	DIG	BLOCK			Total	GEN Points
			K	E	TA	PCT		A	SA	SE			RE	BS	BA		
Jan 5, 2005	@ Outrigger Tourn (Lewis)	2	3	4	9	-.111	1	1	2	1	2	0	1	0	1	4.5	
Jan 6, 2005	@ Outrigger Tourn (Penn St.)	5	9	2	19	.368	1	1	3	0	7	0	3	0	3	11.5	
Jan 7, 2005	@ Outrigger Tourn (Hawai'i)	4	9	4	24	.208	0	2	3	2	6	1	3	0	4	13.5	
Jan 14, 2005	California Baptist	5	15	4	26	.423	2	1	5	0	3	1	1	3	2	17.5	
Jan 15, 2005	California Baptist	3	12	3	20	.450	0	0	1	1	0	0	2	1	2	13.0	
Jan 21, 2005	@ UC Santa Barbara	4	17	4	36	.361	0	2	4	2	13	0	1	1	1	19.5	
Jan 22, 2005	@ UC Santa Barbara	3	7	4	14	.214	0	2	1	2	4	0	2	0	2	10.0	
Jan 28, 2005	UCLA	4	11	7	24	.167	3	0	3	1	4	0	3	0	3	13.5	
Jan 29, 2005	UCLA	3	5	6	18	-.056	1	0	2	2	3	0	4	0	4	7.0	
Feb 11, 2005	@ Pepperdine																
Feb 12, 2005	@ Pepperdine																
Feb 18, 2005	@ Hall of Fame Tourn (Ball St.)																
Feb 19, 2005	@ Hall of Fame Tourn (TBA)																
Feb 25, 2005	UC Irvine																
Feb 26, 2005	UC Irvine																
Mar 4, 2005	@ USC																
Mar 5, 2005	@ USC																
Mar 11, 2005	@ Pacific																
Mar 12, 2005	@ Pacific																
Mar 18, 2005	Hawai'i																
Mar 19, 2005	Hawai'i																
Mar 25, 2005	Long Beach State																
Mar 26, 2005	Long Beach State																
Apr 1, 2005	@ CS Northridge																
Apr 2, 2005	@ CS Northridge																
Apr 8, 2005	UC San Diego																
Apr 9, 2005	UC San Diego																
Apr 15, 2005	Stanford																
Apr 16, 2005	Stanford																
Apr 23, 2005	MPSF First Round																
Apr 28, 2005	MPSF Second Round																
Apr 30, 2005	MPSF Finals																
Totals		33	88	38	190	.263	8	10	24	11	47	2	20	5	22	110.0	

Matt Heyes • 6-5 • OH • Sophomore • Salt Lake City, Utah

- Saw first action of his career vs. Lewis in the Outrigger Tournament at the start of the 2005 season
- Served an ace in each of his first two matches of career



Season and Career Highs

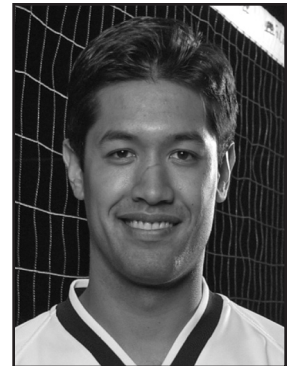
- Kills:**
Season: N/A
Career: N/A
- Attempts:**
Season: N/A
Career: N/A
- Hitting Percentage:**
Season: N/A
Career: N/A
- Digs:**
Season: 1 (three times)
Career: 1 (three times)
- Block Solos**
Season: N/A
Career: N/A
- Block Assists**
Season: N/A
Career: N/A
- Total Blocks**
Season: N/A
Career: N/A
- Aces:**
Season: 1 (twice)
Career: 1 (twice)

#6 Matt Heyes 2005 Match-by-Match Statistics

Date	Opponent	GP	ATTACK				PCT	SET			SERVE	PASS	DIG	BLOCK			Total	GEN Points
			K	E	TA	TA		A	SA	SE				RE	BS	BA		
Jan 5, 2005	@ Outrigger Tourn (Lewis)	1	0	0	0	.000	0	1	1	0	0	1	0	0	0	0	1	1
Jan 6, 2005	@ Outrigger Tourn (Penn St)	5	0	0	0	.000	0	1	2	0	0	0	0	0	0	0	1	1
Jan 7, 2005	@ Outrigger Tourn (Hawai'i)	DNP																
Jan 14, 2005	California Baptist	1	0	0	0	.000	0	0	0	0	0	1	0	0	0	0	0	0.0
Jan 15, 2005	California Baptist	1	0	0	0	.000	0	0	0	0	0	0	0	0	0	0	0	0.0
Jan 21, 2005	@ UC Santa Barbara	3	0	0	0	.000	0	0	1	0	0	0	0	0	0	0	0	0.0
Jan 22, 2005	@ UC Santa Barbara	DNP																
Jan 28, 2005	UCLA	2	0	0	0	.000	0	0	0	0	0	1	0	0	0	0	0	0.0
Jan 29, 2005	UCLA	3	0	0	0	.000	0	0	0	0	0	0	0	0	0	0	0	0.0
Feb 11, 2005	@ Pepperdine																	
Feb 12, 2005	@ Pepperdine																	
Feb 18, 2005	@ Hall of Fame Tourn (Ball St)																	
Feb 19, 2005	@ Hall of Fame Tourn (TBA)																	
Feb 25, 2005	UC Irvine																	
Feb 26, 2005	UC Irvine																	
Mar 4, 2005	@ USC																	
Mar 5, 2005	@ USC																	
Mar 11, 2005	@ Pacific																	
Mar 12, 2005	@ Pacific																	
Mar 18, 2005	Hawai'i																	
Mar 19, 2005	Hawai'i																	
Mar 25, 2005	Long Beach State																	
Mar 26, 2005	Long Beach State																	
Apr 1, 2005	@ CS Northridge																	
Apr 2, 2005	@ CS Northridge																	
Apr 8, 2005	UC San Diego																	
Apr 9, 2005	UC San Diego																	
Apr 15, 2005	Stanford																	
Apr 16, 2005	Stanford																	
Apr 23, 2005	MPSF First Round																	
Apr 28, 2005	MPSF Second Round																	
Apr 30, 2005	MPSF Finals																	
Totals		16	0	0	0	.000	0	2	4	0	3	0	0	0	0	0	0	2.0

Rob Congelliere • 6-4 • OH • Senior • Newbury Park, Calif.

- Saw first action of career against Lewis at the Outrigger Tournament



Season and Career Highs

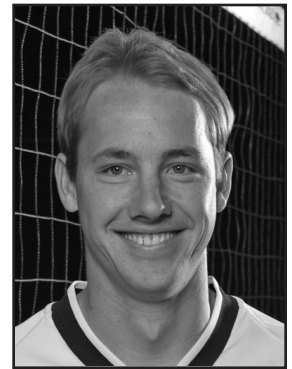
- Kills:**
Season:
Career:
- Attempts:**
Season:
Career:
- Hitting Percentage:**
Season:
Career:
- Digs:**
Season:
Career:
- Block Solos**
Season:
Career:
- Block Assists**
Season:
Career:
- Total Blocks**
Season:
Career:
- Aces:**
Season:
Career:

#4 Rob Congelliere 2005 Match-by-Match Statistics

Date	Opponent	GP	ATTACK				PCT	SET			SERVE	PASS	DIG	BLOCK			Total	GEN Points
			K	E	TA	TA		A	SA	SE				RE	BS	BA		
Jan 5, 2005	@ Outrigger Tourn (Lewis)	1	0	0	0	.000	0	0	1	0	0	0	0	0	0	0	0	0.0
Jan 6, 2005	@ Outrigger Tourn (Penn St)	DNP																
Jan 7, 2005	@ Outrigger Tourn (Hawai'i)	1	0	0	0	.000	0	0	0	0	0	0	0	0	0	0	0	0.0
Jan 14, 2005	California Baptist	DNP																
Jan 15, 2005	California Baptist	2	0	0	0	.000	0	0	0	0	0	0	0	0	0	0	0	0.0
Jan 21, 2005	@ UC Santa Barbara	DNP																
Jan 22, 2005	@ UC Santa Barbara	1	0	0	0	.000	0	0	0	0	0	0	0	0	0	0	0	0.0
Jan 28, 2005	UCLA	DNP																
Jan 29, 2005	UCLA	DNP																
Feb 11, 2005	@ Pepperdine																	
Feb 12, 2005	@ Pepperdine																	
Feb 18, 2005	@ Hall of Fame Tourn (Ball St)																	
Feb 19, 2005	@ Hall of Fame Tourn (TBA)																	
Feb 25, 2005	UC Irvine																	
Feb 26, 2005	UC Irvine																	
Mar 4, 2005	@ USC																	
Mar 5, 2005	@ USC																	
Mar 11, 2005	@ Pacific																	
Mar 12, 2005	@ Pacific																	
Mar 18, 2005	Hawai'i																	
Mar 19, 2005	Hawai'i																	
Mar 25, 2005	Long Beach State																	
Mar 26, 2005	Long Beach State																	
Apr 1, 2005	@ CS Northridge																	
Apr 2, 2005	@ CS Northridge																	
Apr 8, 2005	UC San Diego																	
Apr 9, 2005	UC San Diego																	
Apr 15, 2005	Stanford																	
Apr 16, 2005	Stanford																	
Apr 23, 2005	MPSF First Round																	
Apr 28, 2005	MPSF Second Round																	
Apr 30, 2005	MPSF Finals																	
Totals		5	0	0	0	.000	0	0	1	0	0	0	0	0	0	0	0	0.0

Bryan Stewart • 6-5 • OH • Sophomore • Sandy, Utah

• Played first match of career against Lewis and registered a kill



Season and Career Highs

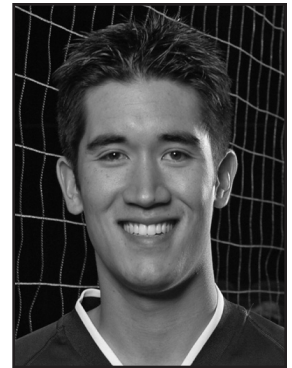
Kills:
 Season: 1 vs. Lewis, 1/5/05
 Career: 1 vs. Lewis, 1/5/05
Attempts:
 Season: 1 vs. Lewis, 1/5/05
 Career: 1 vs. Lewis, 1/5/05
Hitting Percentage:
 Season:
 Career:
Digs:
 Season:
 Career:
Block Solos
 Season:
 Career:
Block Assists
 Season:
 Career:
Total Blocks
 Season:
 Career:
Aces:
 Season: 1 vs. UCLA, 1/29/05
 Career: 1 vs. UCLA, 1/29/05

#2 Bryan Stewart 2005 Match-by-Match Statistics

Date	Opponent	GP	ATTACK				SET	SERVE			PASS	DIG	BLOCK			Total	GEN Points
			K	E	TA	PCT		A	SA	SE			RE	BS	BA		
Jan 5, 2005	@ Outrigger Tourn (Lewis)	1	1	0	1	1.000	0	0	1	0	0	0	0	0	0	0	1.0
Jan 6, 2005	@ Outrigger Tourn (Penn St.)	DNP															
Jan 7, 2005	@ Outrigger Tourn (Hawai'i)	2	0	0	0	.000	0	0	0	0	0	0	0	0	0	0	0.0
Jan 14, 2005	California Baptist	2	0	0	1	.000	0	0	0	0	0	0	0	0	0	0	0.0
Jan 15, 2005	California Baptist	2	0	0	0	.000	0	0	0	0	0	0	0	0	0	0	0.0
Jan 21, 2005	@ UC Santa Barbara	DNP															
Jan 22, 2005	@ UC Santa Barbara	1	0	0	0	.000	0	0	0	0	0	0	0	0	0	0	0.0
Jan 28, 2005	UCLA	1	0	0	0	.000	0	0	0	0	0	0	0	0	0	0	0.0
Jan 29, 2005	UCLA	2	0	0	0	.000	0	1	1	0	0	0	0	0	0	0	1.0
Feb 11, 2005	@ Pepperdine																
Feb 12, 2005	@ Pepperdine																
Feb 18, 2005	@ Hall of Fame Tourn (Ball St.)																
Feb 19, 2005	@ Hall of Fame Tourn (TBA)																
Feb 25, 2005	UC Irvine																
Feb 26, 2005	UC Irvine																
Mar 4, 2005	@ USC																
Mar 5, 2005	@ USC																
Mar 11, 2005	@ Pacific																
Mar 12, 2005	@ Pacific																
Mar 18, 2005	Hawai'i																
Mar 19, 2005	Hawai'i																
Mar 25, 2005	Long Beach State																
Mar 26, 2005	Long Beach State																
Apr 1, 2005	@ CS Northridge																
Apr 2, 2005	@ CS Northridge																
Apr 8, 2005	UC San Diego																
Apr 9, 2005	UC San Diego																
Apr 15, 2005	Stanford																
Apr 16, 2005	Stanford																
Apr 23, 2005	MPSF First Round																
Apr 28, 2005	MPSF Second Round																
Apr 30, 2005	MPSF Finals																
Totals		11	1	0	2	.500	0	1	2	0	0	0	0	0	0	0	2.0

Brian Congelliere • 6-2 • S • Freshman • Newbury Park, Calif.

• Saw first action of career against Cal Baptist



Season and Career Highs

Kills:
 Season:
 Career:
Hitting Percentage:
 Season:
 Career:
Assists:
 Season: 2 at UCSB, 1/22/05
 Career: 2 at UCSB, 1/22/05
Digs:
 Season: 1 at UCSB, 1/22/05
 Career: 1 at UCSB, 1/22/05
Block Solos
 Season:
 Career:
Block Assists
 Season:
 Career:
Total Blocks
 Season:
 Career:
Aces:
 Season:
 Career:

#5 Brian Congelliere 2005 Match-by-Match Statistics

Date	Opponent	GP	ATTACK				SET	SERVE			PASS	DIG	BLOCK			Total	GEN Points
			K	E	TA	PCT		A	SA	SE			RE	BS	BA		
Jan 5, 2005	@ Outrigger Tourn (Lewis)	DNP															
Jan 6, 2005	@ Outrigger Tourn (Penn St.)	DNP															
Jan 7, 2005	@ Outrigger Tourn (Hawai'i)	DNP															
Jan 14, 2005	California Baptist	DNP															
Jan 15, 2005	California Baptist	1	0	0	0	.000	0	0	0	0	0	0	0	0	0	0	0.0
Jan 21, 2005	@ UC Santa Barbara	DNP															
Jan 22, 2005	@ UC Santa Barbara	1	0	0	0	.000	2	0	0	0	1	0	0	0	0	0	0.0
Jan 28, 2005	UCLA																
Jan 29, 2005	UCLA																
Feb 11, 2005	@ Pepperdine																
Feb 12, 2005	@ Pepperdine																
Feb 18, 2005	@ Hall of Fame Tourn (Ball St.)																
Feb 19, 2005	@ Hall of Fame Tourn (TBA)																
Feb 25, 2005	UC Irvine																
Feb 26, 2005	UC Irvine																
Mar 4, 2005	@ USC																
Mar 5, 2005	@ USC																
Mar 11, 2005	@ Pacific																
Mar 12, 2005	@ Pacific																
Mar 18, 2005	Hawai'i																
Mar 19, 2005	Hawai'i																
Mar 25, 2005	Long Beach State																
Mar 26, 2005	Long Beach State																
Apr 1, 2005	@ CS Northridge																
Apr 2, 2005	@ CS Northridge																
Apr 8, 2005	UC San Diego																
Apr 9, 2005	UC San Diego																
Apr 15, 2005	Stanford																
Apr 16, 2005	Stanford																
Apr 23, 2005	MPSF First Round																
Apr 28, 2005	MPSF Second Round																
Apr 30, 2005	MPSF Finals																
Totals		2	0	0	0	.000	2	0	0	0	1	0	0	0	0	0	0.0