



BYU Women's Basketball

Athletic Communications • 30 Smith Fieldhouse • Provo, Utah • 84602
 801-422-8948 office • 801-422-0633 fax • website: www.byucougars.com

Women's Basketball Contact: Norma Collett • 801-422-4908 office • 801-372-0989 cell • email: norma_collett@byu.edu

BYU Women's Basketball

Game #23: BYU (16-6, 6-4) @ UNM (17-6, 6-4) - 02/17/09; 6 p.m. MST

Game #24: BYU (16-6, 6-4) vs. UNLV (10-13, 3-8) - 02/21/09; 2 p.m. MST

2008-09 SCHEDULE/Results

Date	Opponent	Time/Results
Nov. 5	Western Oregon (exh.)	W 79-51
Nov. 8	Dixie State Co (exh.)	W 77-40
Nov. 14	@ Portland State	L 64-73
Nov. 18	@ Nevada	W 81-63
Nov. 21	Oregon	W 67-45
Nov. 25	UCONN (BYUTV)	L 96-47
Nov. 28	Southern Utah	W 70-64
Dec. 5	vs. Wright St. (Hukilau Inv.)	W 56-50
Dec. 6	vs. USC (Hukilau Inv.)	W 65-64
Dec. 10	Weber State (BYUTV)	W 76-69
Dec. 13	Utah State (BYUTV)	W 61-60 2ot
Dec. 20	@ Long Beach State	W 66-49
Dec. 30	Arkansas State (BYUTV)	W 49-39
Jan. 3	@ Portland	W 65-37
Jan. 10	CSU* (BYUTV)	W 61-43
Jan. 13	@ TCU* (Mtn.)	W 62-46
Jan. 17	UNM*	L 61-57
Jan. 21	@ UNLV*	W 67-62
Jan. 24	@ SDSU*	L 36-56
Jan. 28	Utah* (BYUTV)	L 55-63
Jan. 31	@ Wyoming*	W 58-45
Feb. 4	Air Force* (BYUTV)	W 60-41
Feb. 11	@ CSU*	W 53-51
Feb. 14	TCU* (BYUTV)	L 55-75
Feb. 17	@ UNM* (Mtn.)	6 p.m.
Feb. 21	UNLV* (CBSCS)	2 p.m.
Feb. 25	SDSU* (BYUTV)	7 p.m.
Feb. 28	@ Utah* (Mtn.)	1:30 p.m.
Mar. 4	Wyoming* (BYUTV)	7 p.m.
Mar. 7	@ Air Force*	2 p.m.
Mar. 11-14	@ MWC Champs	TBA
Mar. 18-21	@ NCAA 1st/2nd Round	TBA
Mar. 25-28	@ NCAA Regionals	TBA

All Times Local to Site

*Indicates MWC Games

2008-09 BASKETBALL STAFF

Head Coach: Jeff Judkins (Utah '78)
 Office Phone: 801-422-8035
 Best time to call: 9-10 a.m. daily
 Current Record at BYU/Yrs: 155-84/7
 Career Record: Same
 Assistant Coach: Alli Bills (Utah, '98)
 Office Phone: 801-422-1548
 Assistant Coach: Jonas Chatterton (Utah '99)
 Office Phone: 801-422-8155
 Assistant Coach: Stacy Jensen (BYU '02)
 Office Phone: 801-422-7682

LEAGUE PLAY CONTINUES WITH AWAY AND HOME GAME

The Cougar women (16-6, 6-4) get set to return to winning in MWC play this week. They are at UNM (17-6, 6-4) on Tues., Feb. 17 in at 6 p.m.

BYU returns home to host UNLV (10-13, 3-8) on Sat., Feb. 21 at 2 p.m. The contest with the Rebels is part of the nationwide WBCA Pink Zone campaign to raise breast cancer awareness.

Game Information

When: 2/17/09 **Where:** @ UNM **Tip:** 6 p.m. MST **Arena:** The Pit

When: 2/21/09 **Where:** vs. UNLV **Tip:** 2 p.m. MST **Arena:** Marriott Ctr.

Broadcast Plans

Television: The BYU at UNM game is live on The Mtn with Andrea Lloyd and Tracy Warren calling the action. The contest between BYU and UNLV on Feb. 21 airs live on CBS College Sports. Ann Schatz and Tammy Blackburn will call the game.

Internet: Live audio streaming is available for both games on the internet at BYU Radio with Jay Mosen calling the action. A link is available by going to http://www.byucougars.com/basketball_w/

Stats: Live stats through GameTracker are available as well. A link is available by logging on to the BYU women's basketball home page at http://www.byucougars.com/basketball_w/

BYU Probable Starters

No.	Name	Pos.	Ht.	Yr.	PPG	RPG
03	Jazmine Foreman	G	5-5	So	7.2	4.0
22	Mindy Nielson	G	5-10	So	10.7	4.0
32	Shawnee Slade	F	5-11	Sr	9.9	4.2
45	Keilani Moeaki	F	6-2	So	6.0	3.4
54	Cassie King	C	6-3	Sr	7.4	5.9

Off the Bench

No.	Name	Pos.	Ht.	Yr.	PPG	RPG
23	Coriann Wood	F	6-1	So	7.2	5.0
35	Kristen Riley	C	6-3	Fr	3.8	3.5
14	Sarah Hostetter	G/F	5-11	Sr	3.0	0.8
21	Stephanie Buhler	F	6-1	Fr (rs)	2.0	0.1
24	Dani Peterson	F	6-1	Fr	1.7	1.7
55	Megan Marks	F	6-3	So	1.4	1.4
13	Jaime Judkins	G	5-6	Jr	1.1	0.2
01	Jenteal Jackson	G	5-7	Fr	0.9	0.6

BYU 2008-09 Quick Facts

University Information

Location: Provo, Utah
 Founded: Oct. 15, 1875
 Elevation: 4,553 feet
 Enrollment: 33,278
 Nickname: Cougars
 Mascot Cosmo
 Colors: Dark Blue and White

Team Information

2008-09 Record: 16-6, 6-4
 2007-08 Record: 13-16
 2007-08 MWC Record: 7-9
 Postseason: n/a
 Letterwinners Return/Lost: 12/4
 Starters Return/Lost: 2/3
 Newcomers: 6

Roster Breakdown

Letterwinners Returning: (12)

Cassie King: 6-3 Sr. C (4.7 ppg; 2.8 rpg)
 Sarah Red-Hostetter: 5-11 Sr. G/F (2.3 ppg; 0.4 rpg)
 Shawnee Slade: 5-11 Sr. F (7.4 ppg; 5.5 rpg)
 Jaime Judkins: 5-6 Jr. G (0.7 ppg; 0.5 rpg)
 Jazmine Foreman: 5-5 So. G (1.7 ppg; 1.0 rpg)
 Megan Marks: 6-2 So. F (0.6 ppg; 0.1 rpg)
 Keilani Moeaki: 6-2 So. F (3.6 ppg; 2.9 rpg)
 Mindy Nielson: 5-10 So. G (7.3 ppg; 2.9 rpg)
 Coriann Wood: 6-1 So. F (3.4 ppg; 2.3 rpg)
 Marie Beck: 5-8 So. G (played in three games)
 Marianne Bell: 6-1 So. F (played in four games)
 Haley Hall: 5-4 So. G (played in 7 games in 2006-07)*

Letterwinners Lost: (4)

Mallary Carling: (13.7 ppg; 3.5 rpg)
 Lauren Varley: (7.0 ppg; 8.4 rpg)
 Ashley Cheesman: (2.7 ppg; 2.6 rpg)
 Lauren Nichols: (0.3 ppg; 0.1 rpg)

Starters Returning: (2)

Shawnee Slade: 5-11 Sr. F (7.4 ppg; 5.5 rpg)
 Mindy Nielson: 5-10 So. G (7.3 ppg; 2.9 rpg)

Starters Lost: (3)

Mallary Carling: (13.7 ppg; 3.5 rpg)
 Lauren Varley: (7.0 ppg; 8.4 rpg)
 Ashley Cheesman: (2.7 ppg; 2.6 rpg)

Newcomers: (6)

Jenteal Jackson: 5-7 G (SLC, UT/Skyline HS)
 Alexis Kaufusi: 6-1 F (Provo, UT/Timpview HS)
 Dani Peterson: 6-1 F (SLC, UT/Skyline HS)
 Kristen Riley: 6-3 F (San Clemente, CA/ San Clemente HS)
 Haley Hall: 5-4 G (Syracuse, UT/Clearfield HS)*
 Stephanie Buhler: 6-0 F (Oregon City, OR/Oregon City HS)^

* Played in six games in 2006-07 prior to torn ACL injury. Reinjured it in 2007-08.

^ 2007-08 Redshirt

2008-09 Cougar Stats Summary –

- ✓ Shooting from the field: (.382, 501-1310)
- ✓ Shooting from the free-throw line: (.709, 217-306)
- ✓ Shooting from three-point line: (.279, 112-402)
- ✓ Average points per game: 60.5
- ✓ Average assists per game: 13.7
- ✓ Average steals per game: 9.6
- ✓ Average blocks per game: 3.6
- ✓ Average turnovers per game: 17.3

Team Summary for 2008-09



The Cougars return 12 letterwinners and two starters.

- ❑ Three seniors: Shawnee Slade, Cassie King and Sarah Red Hostetter. Slade, who started in every game last year, was second on the team in both scoring and rebounding averaging 7.4 points and 5.5 rebounds per game. King, a 6-3 center played in all games with an average of 4.7 points and 2.7 boards per contest. Red-Hostetter played in 21 games last year and averaged 2.7 points per game.
- ❑ Key returners include Mindy Nielson and Haley Hall. Nielson started in 19 games last year and averaged 7.3 points, 2.9 rebounds, and led the team in assists with a total of 80 for an 2.8 average. Point-guard Haley Hall is out the rest of this season after suffering a torn ACL to her right knee at the Portland State game on 11/14/08. Hall played in seven games during the 2006-07 season before an ACL injury ended the season. After a year of rehabilitation, Hall was set to return to her point-guard spot in 2007-08, but reinjured the same knee and did not play last year.
- ❑ Jaime Judkins is the lone junior on the squad. She will be relied on to continue her hard working attitude and strong play this year.
- ❑ Also back for their second collegiate season are four additional sophomores: Jazmine Foreman, Megan Marks, Keilani Moeaki and Coriann Wood. The four return after playing significant minutes as freshmen and learning to compete at the college level.
- ❑ The six newcomers include Stephanie Buhler, a 6-0 freshman forward who redshirted last season.
- ❑ 2008-09 Freshman Class:
 Jenteal Jackson, a 5-7 guard from Salt Lake City and Skyline HS
 Alexis Kaufusi, a 6-1 forward from Provo and Timpview HS
 Dani Peterson, a 6-1 forward from Salt Lake City and Skyline HS
 Kristen Riley, a 6-3 forward from San Clemente, CA and San Clemente HS. Riley's older sister Lauren played four seasons on the BYU program, graduating in 2008.

Last Game

Despite recording a season-high nine three-pointers, the BYU women's basketball team dropped a 75-55 contest to TCU. Freshman Stephanie Buhler led BYU with a career-high nine points, all three-point shot attempts. Sophomore point guard Jazmine Foreman brought down nine rebounds to lead the Cougars. The BYU bench contributed 27 of the team's total points,

USA Today ESPN Div. I Top 25 Coaches Poll -- Preseason Poll (02/10/09)

Rk. School

1. Connecticut (23-0)*
2. Oklahoma (20-2)
3. California (20-2)
4. Auburn (23-1)
5. Stanford (19-4)
6. Baylor (19-3)
7. North Carolina (21-3)
8. Texas A&M (18-4)
9. Maryland (19-4)
10. Duke (19-3)
11. Florida (22-2)
12. Louisville (21-3)
13. Ohio State (19-4)
14. Texas (17-5)
15. Virginia (19-5)
16. Kansas State (19-3)
17. Florida State (20-5)
18. Tennessee (17-6)
19. Xavier (20-4)
20. Iowa St. (18-4)
21. South Dakota State (23-2)
22. Notre Dame (17-5)
23. Pittsburgh (17-4)
24. Vanderbilt (18-6)
25. DePaul (18-6)

*Denotes 08-09 Opponent.

2008-09 BYU's record when...

BYU leads at half	9-1
Opponent leads at half	6-4
Score is tied at the half	1-1
Game goes into overtime	1-0
BYU shoots 50 % or better	1-0
Opponent shoots 50 % or better	0-1
BYU makes five or more 3-pointers	13-4
Opponent makes 5 or more 3-pointers	3-3
BYU outrebounds opponent	10-0
Opponent outrebounds BYU	6-5
Rebounds are equal	0-0
BYU has 16 and under turnovers	10-2
Opponent has 16 and under	0-2
BYU has 17-20 turnovers	4-3
Opponent has 17-20 turnovers	8-3
BYU has more than 20 turnovers	2-1
Opponent has more than 20 turnovers	8-1
Cougars play at home	7-4
Cougars play on the road	7-2
Cougars play at neutral site	2-0

compared to TCU's 14 bench points. Both teams battled back-and-forth, with six lead changes before the halftime break. A make from beyond-the-arc by Coriann Wood with 1:45 to play in the half put the Cougars up 29-28. However, two TCU field goals with less than a minute remaining sent the team into the locker room with the Horned Frogs up 32-29.

SPECIAL GAME PROMOTIONS FOR Feb. 21 vs. UNLV - WBCA PINK ZONE GAME

Anyone wearing pink will get in FREE to the game. Breast cancer survivors will be recognized at halftime. Pink BYU apparel and other special prizes will be given away throughout the game.

Injury Report

Sophomore point-guard Haley Hall suffered a season ending torn ACL injury to her right knee at Portland St. Hall has had two other ACL injuries both on her left knee prior to the 2008-09 campaign.

TEAM NOTABLES

- The 41 points against the Falcons on 2/4/09 in the first 20 minutes marked the highest first-half point total in MWC play and second highest on the year. BYU previously scored 48 points in the first half against Nevada on 11/18/08. Air Force's 15 points in the first half were a season low for all BYU opponents this season. The previous low was held by Long Beach St., with 17 points.
- In the Utah game on 1/28/09, the Cougar bench scored 23 points to the Utes 10. At Wyoming on 1/31/09, 21 total points were scored by the BYU bench to Wyoming's 17, while at Portland, they had 36 to the Pilots 19. The bench had 23 points vs. AF on 2/4/09.
- The 45.5 (5-11) shooting from three-point range vs. Wyoming on 1/31/09 marked the best 3-point FG percentage in league play for the Cougars so far this year.
- In the road win at Wyoming, BYU shot .415 (22-53) from the field, the second best in league competition to date.
- The Cougar women's 10-game winning streak came to a stop with the four-point, 61-57 loss to UNM on 1/17/09. The last time BYU went 10-0 was during the 1976-77 season. The team's best start in school history was in 1992-93 where they had 15-0. The next best start was a 12-0 record to begin the 1978-79 campaign. Under coach Judkins, this year's 10-0 start is his second best, after going 11-0 during the 2005-06 season after a 67-65 loss to NC St., on 11/21/05.
- Grabbed a season high 55 rebounds vs. Utah St., tying for second place in the programs history. Last time BYU had 55 rebounds was vs. CS Northridge on 12/9/06.
- The overtime win against USU broke a five-season long overtime losing streak. BYU's last overtime win came against USC on 11/29/01. BYU is now 4-1 overall when playing two overtime periods.
- In the game vs. Weber St., shot 49.2 percent (29-49) from the field; and shot 49.0 percent (24-49) against USC in Hawaii on 12/6/08, tying for the second best field goal percentages of the season. The best field goal percentage to date is 50.0 (20-40) on 12/5/08 vs. Wright State.
- Four players scored in double figures in the win over Weber St., making it the first time this season four players scored in double digits in back-to-back games. The team had four score in double figures vs. USC.
- Had six blocks at Long Beach Weber St., on 12/20/08 for the second best total of the season. Had a season-high seven blocks vs. Oregon on 11/21/08.

TEAM (cont.)

- ◆ Dished out 19 assists at Portland on 01/03/08 and vs. USC on 12/6/08 for season bests. Had 18 in the home win vs. Weber St., on 12/10/08 as well as vs. SUU on 11/28/08 and vs. Oregon on 11/21/08.
- ◆ With the 65-64 win over USC in Hawaii, BYU improved to 2-0 against Pac-10 schools this year. Head Coach Jeff Judkins is 9-4 overall against the Pac-10.
- ◆ Had 14 steals vs. SUU for season bests, and 13 vs. Long Beach St., marking its second-best defensive effort.
- ◆ With the 65-64 win over USC in Hawaii, BYU improved to 2-0 against Pac-10 schools this year. Head Coach Jeff Judkins is 9-4 overall against the Pac-10.
- ◆ In the game vs. UConn, BYU went 7-8 from the free-throw line (87 percent), the second best of the year
- ◆ When the nation's No. 1 ranked UConn Huskies were in town on 11/25/08, they were the highest ranked women's basketball team to ever play in the Marriott Center and the highest ranked team that BYU has ever played.
- ◆ In the victory at Nevada, BYU was perfect from the line in the first half going 9-9, and finished the game making 17 of 18, the team's best to date.
- ◆ With the 67-45 victory over Oregon on Fri., Nov. 21, coach Jeff Judkins improved to 7-1 in home openers.
- ◆ There were 3,109 fans in attendance at the UConn game, the highest crowd of the season.
- ◆ Has the second-youngest squad in the nation this season. The Cougars have 14 underclassmen filling out their 2008-09 roster. They are the second-youngest to Northwestern St., who has 15 underclassmen.
- ◆ With the 60-41 win over Air Force on 2/4/09, the team has scored 60 points or more in 13 games this season, winning all but one (vs. Portland St.).
- ◆ Shot 44 percent from the field vs. UNM on 1/17/09, the second straight game they have shot at least 43 percent.
- ◆ New Mexico was ranked 25th nationally coming into the game in Provo on 1/17/09. They are the second Top-25 team the Cougars have faced at the Marriott Center this season.
- ◆ Had just nine turnovers at UNLV on 1/21/09 for season bests in that category.
- ◆ Shot .833 (10-12) from the charity stripe in the win at UNLV on 1/21/09 for the fourth best of the season and the best to date in league play.

PLAYER NOTABLES

Shawnee Slade:

- grabbed eight boards at CSU on 2/11/09 for the third time this year.
- scored 18 points vs. SUU on 11/28/08 for new season highs.
- led the team in scoring with 16 points in the win over CSU on 1/10/09 marking her eighth double digit performance of the season and 28th overall.
- is second on the team in scoring with 9.9 points and third in rebounds grabbing 4.2 per game.

Mindy Nielson:

- had a team and game high four steals in the road game at Wyoming on 1/31/09.
- recorded her eighth double digit game of the year and 15th overall with 21 points to lead the team in the win at UNLV on 1/21/09.
- had season and career highs in steals with six in the road win at UNLV on 1/21/09.
- grabbed a season and career high eight boards vs. UNM on 1/17/09
- had season highs in blocks with three at Long Beach St., on 12/20/08
- in the victory over Weber St., dished out a season-high seven assists.
- picked up new season and career highs in points with 27 at Nevada on 11/18/08 and went 9-10 from the line.
- ranks first on the team in points and in steals with 10.7 points and a total of 45 steals on the year.
- places second on the team in assists dishing out a total of 73 to date.

Cassie King:

- led all scorers with 15 points in the MWC game at CSU for her seventh double figure contest this year and her 12th career.
- posted her first double-double of her career with 19 points and 13 rebounds in the win at UNLV on 1/21/09. The points and boards were season and career highs, while the points mark the 11th career and sixth season double digit performance.
- had back-to-back double figure outings with the 10 points vs UNM on 1/17/09 and the 19 at UNLV on 1/21/09.
- grabbed a team and game high nine boards in the win over Arkansas St., on 12/30/08.
- tops the list in the rebound category grabbing 5.9 boards a game and is third in scoring contributing 7.4 points.

PLAYER NOTABLES (cont.)

Jazmine Foreman:

- scored 10 points for team highs in the home game vs. AFA on 2/4/09, and has recorded five double-digit scoring games this year and career.
- grabbed six boards in back-to-back league games vs. Utah on 1/28/09 and at Wyoming on 1/31/09.
- led the team and game with 16 points in the home league game vs. UNM on 1/17/09, recording her fourth double digit output this year and in her career.
- grabbed a season and career high nine rebounds at TCU, on 01/13/09. The nine boards were a team high also.
- scored a season and career high 19 points vs. USC on 12/6/08 and went 4-4 from the free-throw line, two of those sealed the win in the final seconds of the contest.
- dished out eight assists vs. Wright St., on 12/5/08 for new season highs.
- leads the team in assists dishing out a total of 83 to date, is second on the team in steals with 32 and ranks fourth in scoring with 7.2 points.
- picked up new season and career high four steals vs. Weber St., on 12/10/08.

Keilani Moeaki:

- had back-to-back double figure performances in the two league games this week, tallying 12 vs. Utah and scored a team and game high 13 at Wyoming on 1/31/09. The 13 points were just one shy of her season high 14 points and the most in MWC games to date. The 13 points also mark her fifth double figure contest of the season and eighth overall.
- had two steals vs. Long Beach State, tying for season and career bests in that category.
- grabbed eight rebounds which mark a new career best vs. Utah St. on 12/13/08.

Coriann Wood:

- brought down a season and career-high nine rebounds vs. AFA on 2/04/09
- grabbed six boards in back-to-back league games vs. Utah on 1/28/09 and at Wyoming on 1/31/09.
- led the team in points with 13 in the home game vs. Utah on 1/28/09 marking her seventh double figure performance this year and her eighth overall. Also dished out new season and career highs in assists with three.
- had two blocks in the Long Beach win for new season and career highs in the category.
- scored 13 points vs. Utah St., on 12/13/08, her fifth double digit game of the year and sixth overall, the points also mark three back-to-back double figure performances on the year.
- tallied a season and career high 15 points vs. Weber St., on 12/10/08 for her fourth this season and fifth double digit performance of her career. The 15 points are just one more than her 14 points scored before fouling out of the game against USC on 12/6/08.
- is tied for fourth place in points with a 7.2 average, and second in the rebound category grabbing 5.0 boards

Kristen Riley:

- set a new career high nine points, vs. SUU and was 4-6 from the field.
- grabbed eight rebounds in the road loss at SDSU on 1/24/09 for season and career highs in that category.
- recorded three blocks in the road loss at SDSU on 1/24/09 which were season and career highs.

Megan Marks:

- eight points vs. SUU were new career highs and was perfect 4-4 from the field.
- grabbed six rebounds in the contest at Portland on 01/03 for new season and career highs.

Jenteal Jackson:

- scored five points in the home game vs. UNM on 1/17/09 for season and career highs.
- recorded a season and career-high two steals vs. AFA on 2/4/09.

Stephanie Buhler:

- recorded new season and career high in points with nine vs. TCU on 2/14/09 all coming from three-point range.
- scored three treys in the game vs. TCU on 2/13/09 for new season and career highs in that category.

Jaime Judkins:

- scored seven points at Portland on 01/03/09 for new season and career highs.

Dani Peterson:

- picked up new season and career high in rebounds with five in the game at Portland on 01/03.
- tied her season and career in points with four in the road loss at SDSU on 1/24/09.

2008-09 GAME BY GAME DOUBLE FIGURE SCORING

<u>Opponent</u>	<u>How Many</u>	<u>Players (points)</u>
at Portland St.	(3)	Slade (15), Foreman (12), Hall (11)
at Nevada	(5)	Nielson (27), Moeaki (14), King (11), Foreman (10), Wood (10)
vs. Oregon	(2)	Slade (17), Hostetter (13)
vs. UConn	(2)	Nielson (14), Moeaki (10)
vs. SUU	(2)	Slade (18), Wood (10)
vs. Wright St. @ HI	(2)	Nielson (19), Slade (15)
vs. USC @ HI	(4)	Foreman (19), Wood (14), King (14), Slade (13)
vs. Weber St.	(4)	Slade (16), Wood (15), King (12), Nielson (11)
vs. Utah St.	(2)	King (14), Wood (13)
@ Long Beach St	(3)	Slade (14), Nielson (12), Wood (10)
vs. Colorado St.	(2)	Slade (16), Moeaki (10)
vs. UNM	(2)	Foreman (16), King (10)
@ UNLV	(2)	Nielson (21), King (19)
vs. Utah	(2)	Wood (13), Moeaki (12)

2008-09 Mountain West Conference

2008-09 Preseason Poll

BYU's women's basketball team was picked to finish fifth in the league race by the MWC Preseason Coaches and Media Poll. Freshman Kristen Riley was tabbed as the MWC Preseason Freshman of the Year.

2008-09 Mountain West Conference Preseason Poll

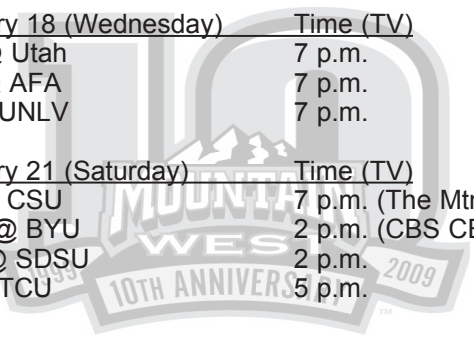
Rk.	Team (1st Place votes)	Points
1.	Utah (16)	206
2.	San Diego State (6)	184
3.	TCU (2)	161
4.	New Mexico (2)	148
5.	BYU	117
6.	Wyoming	113
7.	UNLV	80
8.	Colorado State	44
9.	Air Force	36

THIS WEEK AROUND THE MWC

February 17 (Tuesday) Time (TV)
 BYU @ UNM 6 p.m. (The Mtn.)

February 18 (Wednesday) Time (TV)
 CSU @ Utah 7 p.m.
 TCU @ AFA 7 p.m.
 WY @ UNLV 7 p.m.

February 21 (Saturday) Time (TV)
 AFA @ CSU 7 p.m. (The Mtn.)
 UNLV @ BYU 2 p.m. (CBS CB)
 UNM @ SDSU 2 p.m.
 WY @ TCU 5 p.m.



2008-09 MWC Women's Basketball Standings		
02/15/09		
Team (Rank)	Conf. Games	All Games
Utah	10-1	17-7
SDSU	8-3	17-6
TCU	8-3	16-8
New Mexico	6-4	17-6
BYU	6-4	16-6
Wyoming	4-6	12-11
UNLV	3-8	10-14
CSU	3-8	8-16
Air Force	0-11	4-20

2008-09 MWC Statistics BYU as of 02/15/09

<u>Team Stats</u>	<u>All Gms</u>	<u>MWC Gms</u>
Scoring Offense	7th	8th
Scoring Defense	4th	4th
Scoring Margin	5th	5th
Free Throw %	5th	7th
Field Goal %	6th	6th
Field Goal % Defense	3rd	2nd
3-PT Field Goal %	9th	8th
3-PT Field Goal % Defense	2nd	2nd
Rebounding Offense	5th	5th
Rebounding Defense	5th	6th
Rebounding Margin	4th	5th
Blocked Shots	5th	4th
Assists	5th	5th
Steals	2nd	2nd
Turnover Margin	2nd	3rd
Assist/Turnover Ratio	5th	6th
Offensive Rebounds	3rd	2nd
Defensive Rebounds	7th	6th
3-PT Field Goals Made	7th	7th

<u>Individual Stats</u>	<u>All Gms</u>	<u>MWC Gms</u>
Scoring	16th Nielson (10.7)	15th (10.0)
.....	22nd Slade (9.9)	27th (7.5)
.....	n/a	29th King (7.4)
.....	n/a	30th Foreman (7.3)
Rebounding	14th King (5.9)	10th (6.4)
.....	19th Wood (5.0)	19th (5.1)
Field Goal %	1st King (.588, 70-119)	3rd King (.550, 33-60)
Assists	4th Foreman (3.77)	3rd (3.90)
.....	7th Nielson (3.32)	12th (2.80)
Steals	5th Nielson (2.05)	1st (2.90)
.....	10th Foreman (1.45)	n/a
3-PT Field Goal %	5th Wood (.397, 25-63)	8th (.370, 10-27)
3-PT Field Goal Made	n/a	14th Slade (1.10)
Blocked Shots	10th Moeaki (0.82)	7th (0.90)
.....	15th Nielson (0.59)	n/a
.....	n/a	15th King (0.60)
Assist/Turnover Ratio	3rd Foreman (1.41)	3rd (1.44)
.....	5th Nielson (1.38)	n/a
Offensive Rebounds	12th King (2.00)	11th (2.40)
.....	14th Slade (1.91)	n/a
Defensive Rebounds	15th King (3.91)	14th (4.00)



Head Coach - Jeff Judkins

Overall Record: 155-84

2008-09: 16-6, 6-4

Jeff Judkins begins his eighth year as head coach of the women's basketball program, after garnering back-to-back MWC Coach of the Year honors in 2006 and 2007. Prior

to heading up the women's program, he served one year (1999-2000) as Director of Basketball Operations for the BYU men's team. In (2000-2001) he was an assistant coach on the women's team.

In five of the last seven seasons, the Cougar team has participated in postseason tournaments including back-to-back NCAA tournament appearances in 2006 and 2007. This past season BYU compiled a 13-16, 7-9 record on the year with senior co-captain Mallary Carling garnering MWC Second Team accolades while senior center Lauren Varley, the other co-captain, picking up MWC Honorable-Mention honors. Most recently, the Cougar team recorded back-to-back MWC Regular Season Titles in 2006 and 2007 with players Ambrosia Anderson and Dani Wright being named MWC Co-Players of the Year those same seasons.

During Judkins' fifth season, the 2005-06 campaign, the Cougar squad compiled its best finish in school history with a 26-6 record, clinched its first MWC regular season title since 1992 and received a no. 7 seed in the NCAA tournament, the highest seed for any BYU program.

For the first time since the 2002-03 season, the 2005-06 squad and its 13-1 record to start the year, broke into the women's basketball collegiate polls, ranked no. 23 by the AP Poll and the USA Today/ESPN/WBCA Coaches Poll. They would move up the poll to as high as 18 and 16 in the two respective polls, finishing the year at no. 20. In that same season Judkins picked up his 100th win, a 69-67 victory over CSU on Mar. 2, the same time the team clinched the league's regular season title.

Under Judkins tutelage the women's basketball program has had consistent success with four postseason appearances including three NCAA Championships, guiding the team to its first ever Sweet Sixteen finish in 2002. In 2005, the 19-11 team played in the first round of the WNIT. Judkins has also coached two All-Americans in Erin Thorn and Ambrosia Anderson. Both have gone on to play in the WNBA. Thorn has been with the New York Liberty team for five years while Anderson completed one season with the Liberty team.

The longtime University of Utah coach and player came to Provo with a proven record of success dating back to his high school days at Highland High School in Salt Lake City.

An all-state selection in basketball, football and baseball, Judkins went on to play for the University of Utah from 1974-78.

While playing at Utah, Judkins helped lead the Utes to one conference championship and two berths in the NCAA tournament. He was a second-team academic All-American and three-time District VII academic selection. He also earned three First Team All-WAC honors and was a member of the 1977 United States World Games team that captured the gold medal.

Judkins also played five years in the National Basketball Association for the Boston Celtics, Portland Trailblazers, Detroit Pistons and Utah Jazz. He was a second-round pick of the Celtics in 1978, the same year the Celtics selected Larry Bird with the sixth pick overall.

After his NBA career, he returned to Utah in 1989 and was an instrumental part of the program's success during his 10 years with the program, recruiting such players as Keith Van Horn, Andre Miller, Mike Doleac, Hanno Mottola, Alex Jensen, Trent Whiting, Garner Meads, Jeff Johnsen and Britton Johnsen.

Judkins, graduated from the University of Utah in 1978 with a degree in health and physical education.

He and his wife Mary Kaye are the parents of five children: Jessica (28), {married to Paul}, Jordan (26), Jenna (24), {married to Whitney Neves who is a pole vaulter on the BYU men's track & field team} Jaime (21), and Jaxson (18). Jenna played four years on the volleyball team at BYU.

Hobbies: waterskiing, horseback riding, hunting, golf, softball, listening to music, and watching ESPN.

Judkins Coaching Record

School	Yrs.	Rec.	Postseason
BYU	2001-02	24-9	NCAA Sweet 16
BYU	2002-03	19-12	NCAA 1st Round
BYU	2003-04	15-14	DNC
BYU	2004-05	19-11	WNIT 1st Round
BYU	2005-06	26-6	NCAA 2nd Round
BYU	2006-07	23-10	NCAA 1st Round
BYU	2007-08	13-16	DNC

Totals: 139-78

THIS WEEK'S MWC OPPONENTS**New Mexico (Feb. 17, 2009) in Albuquerque, NM - 6 p.m. (MST)**

Heading into Tuesday's matchup, the Lobos and Cougars have identical league records at 6-4. New Mexico also has a 17-6 overall record and is 3-2 in conference games at home. Amy Beggin and Angela Hartill are scoring in double digits for the Lobos with 15.1 points and 10.7 respectively. Amanda Adamson is grabbing a team-high 6.3 boards per game while Beggin leads in the assist and steals category dishing out 88 assists and getting 46 steals on the year. This is head coach Don Flanagan's 14th season at the helm of the New Mexico program.

New Mexico Probable Starters

No.	Name	Pos.	Ht.	Yr.	PPG	RPG
03	Eileen Weissmann	F	6-0	Jr	6.1	4.3
44	Angela Hartill	C	6-3	Sr	10.7	4.5
32	Amanda Best	F/G	6-0	So	7.9	6.3
20	Sara Halasz	F/G	6-0	Fr.	5.6	2.4
10	Amy Beggin	G	5-6	Jr	15.1	4.7

Stat Comparison

Category	BYU	UNM
Points:	60.5	67.4
FG:	.382	.403
FT:	.709	.749
3FG:	.279	.336
Reb:	38.1	41.1

Series Information

Record: BYU leads the series 38-25

Last Meeting: The Lobos beat the Cougars in Provo by a 61-57 score in the first meeting between these w o MWC foes. At the Marriott Center, New Mexico has compiled a 6-22 record with their last win just last season when the Lobos grabbed a 55-45 victory on Feb. 26, 2008.

First Meeting in 2009 - Provo, Utah on 1/17/09

Score: 61-57 in favor of UNM

The BYU women's basketball team snapped its 10-game winning streak with a 61-57 loss to No. 25 New Mexico. Jazmine Foreman led BYU with 16 points and 7 assists. Cassie King was the only other Cougar in double-digits with 10 points. The visiting team was able to withstand a second-half comeback from BYU by going to the free-throw line in the final minutes of the contest.

Key Stats in 1st Game	BYU	UNM
Field Goal Percentage	25-of-60 (41%)	(19-of-50) 38%
Free-Throw Percentage	4-of-9 (44%)	21-of-31 (67%)
Three-point Percentage	3-of-9 (33%)	2-of-8 (25%)
Rebounds	36	38

UNLV (Feb. 21, 2009) in Provo, UT - 2 p.m. (MST)

UNLV has compiled a 10-14, 3-8 record heading into this week's league games. They host Wyoming on Wednesday before making the trip to Provo. Three players are putting up double digit numbers in scoring for the Rebels led by Shamela Hampton's 14.4 points and 8.7 rebounds per game. Freshman Jamie Smith contributes 10.7 points and grabs a team high 9.0 boards per game. Erica Helms follows with 10.6 points and 2.2 boards, while Helms tops the list in assists dishing out a total of 70 to date with Smith getting a record 36 steals on the year. Head coach Kathy Olivier is in her first season with UNLV.

UNLV Probable Starters

No.	Name	Pos.	Ht.	Yr.	PPG	RPG
11	Jamie Smith	F	6-0	Fr	10.7	9.0
24	Shamela Hampton	C	6-3	Sr	14.4	8.7
01	Dominique Harris	G	5-10	Sr	6.6	4.1
05	Brittany Halberg	G	5-7	Sr	8.0	2.0
15	Erica Helms	G	5-7	So	10.6	2.2

Stat Comparison

Category	BYU	UNLV
Points:	60.8	64.8
FG:	.386	.384
FT:	.708	.680
3FG:	.280	.317
Reb:	38.0	40.0

Series Information

Record: BYU leads the series 22-11

Last Meeting: In the first time these two MWC foes played, the Cougars grabbed the 67-62 victory in Las Vegas on 1/21/09. When playing at the Marriott Center, the Rebels have a 2-12 record, winning last in Provo on March 6, 2004 a 67-59 UNLV victory.

First Meeting in 2009 - Las Vegas, NV on 1/21/09

Score: 67-62 in favor of BYU

Cassie King's career-high 19 points and 13 rebounds helped the Cougars come from behind after trailing most of the second half to defeat UNLV 67-62. The double-double was King's first of her career. BYU's tough defense held UNLV without a bucket for nearly four minutes down the stretch, from the 4:22 mark to the 0:42 mark of the contest. Nielson hit a three-point shot to put the Cougars up three, 63-60, with 1:24 left. The lead was BYU's first of the second half.

Key Stats in 1st game	BYU	UNLV
Field Goal Percentage	26-of-71 (37%)	(23-of-54) 43%
Free-Throw Percentage	10-of-12 (83%)	12-of-19 (63%)
Three-point Percentage	5-of-19 (26%)	4-of-13 (31%)
Rebounds	44	39

TRAVEL ITINERARY

Team flight: Mon. Feb. 16 - Delta #4777 departs Salt Lake City at 4:40 p.m, arrives in Albuquerque at 6:18 p.m.

Team flight: Wed. Feb. 18 - Delta #4509 departs Albuquerque at 7 a.m., arrives in Salt Lake City 8:49 a.m.

Team Hotel: Marriott Albuquerque, 2101 Louisiana Blvd., N.E., 505-881-6800, 505-888-2982, fax.

WHAT'S NEXT

Following the Sat., Feb., 21 game vs. UNLV, the Cougar team hosts SDSU on Wed., Feb. 24 before traveling to Salt Lake City to take on instate rival Utah on Sat., Feb. 28.

2008-09 BYU Numerical Roster

No.	Name	Pos.	Ht.	Cl.	Exp.	Hometown/Previous School
1	Jenteal Jackson	G	5-7	Fr	HS	Salt Lake City, UT/Skyline HS
3	Jazmine Foreman	G	5-5	So	1V	Vancouver, WA/Hudson's Bay HS
10	Alexis Kaufusi*	F	6-1	Fr	HS	Provo, UT/Timpview HS
13	Jaime Judkins	G	5-6	So	1V	Salt Lake City, UT/Skyline HS
14	Sarah Red-Hostetter	G/F	5-11	Sr	1V	Provo, UT/Timpview HS/Utah
21	Stephanie Buhler	F	6-0	Fr	HS	Oregon City, OR/Oregon City HS
22	Mindy Neilson	G	5-10	So	1V	Centennial, CO/Regis Jesuit HS
23	Coriann Wood	F	6-1	So	1V	Basin City, WA/Connell HS
24	Dani Peterson	F	6-1	Fr	HS	Salt Lake City, UT/Skyline HS
32	Shawnee Slade	G/F	5-11	Sr	3V	Taylorsville, UT/Taylorsville HS
33	Haley Hall	G	5-4	So	1V	Syracuse, UT/Clearfield HS
35	Kristen Riley	F	6-3	Fr	HS	San Clemente, CA/San Clemente HS
45	Keilani Moeaki	F	6-2	So	1V	Warrenville, IL/Wheaton Warrenville South HS
54	Cassie King	C	6-3	Sr	3V	Provo, UT/Provo HS
55	Megan Marks	F	6-2	So	1V	South Jordan, UT/Bingham HS

Walkons

25	Ailine Fonua	G	5-9	Fr	HS	Rancho Cucamonga, CA/Rancho Cucamonga HS
31	Marie Beck	G	5-8	So	1V	Oxnard, CA/Channel Islands HS
34	Marianne Bell	F	6-1	So	1V	Ashburn, VA/Stone Bridge/Bruton HS

* Redshirt 2008-09

Head Coach: Jeff Judkins

Assistant Coaches: Alli Bills, Jonas Chatterton, Stacy Jensen

Director of Basketball Operations: Dan Nielson

Athletic Trainer: Carolyn Billings

Team Manager: Erica Eyestone

2008-09 KEY RETURNERS (BY CLASS)

Shawnee Slade
5-11 Senior Guard/Forward
Taylorsville, UT/Taylorsville HS

#32



At BYU

SENIOR - (2008-09): Has started in all games to date ... grabbed eight boards at CSU on 2/11/09 for the third time this year ... scored a team high 16 points vs. CSU on 1/10/09, marking her eighth double figure outing of the year and 28th overall ... had four straight double digit point performances with the 16 vs. Weber St., on 12/10/08 which brought her season and career double digit scoring total to six and 26 respectively ... contributed 13 points in the win over USC marking her fifth double figure game this year and 25th overall ... is second on the list in points on the team with 9.9 points and is in third place on the team in rebounds grabbing 4.2 boards per game ... recorded her third double digit performance of the year with a season high 18 points vs. SUU on 11/28/08 ... had a team and game high 17 points in the home opener vs. Oregon on 11/21 ... has had back-to-back double digit performances with 15 @ Portland St., on 11/14/08 and the 17 vs. Oregon.

JUNIOR - (2007-2008): Final player notes: started in all games ... in league action finished ranked 28th in scoring (7.4), and 16th in rebounding (5.5) per game, as well as 14th in defensive rebounds (3.83) in the TCU game on 3/8/08 picked up her third career double double with game highs in points (20) and in rebounds (10), her point total marked her second best and 20th double digit contest in her career, ninth this year and fifth in MWC action ... the 20 points in the TCU game on 3/8/08 marked season highs as did the eight field goals made ... led the team in total points scored in six games, grabbed team highs in rebounds in eight games, dished out team highs in assists in four games and in steals in three contests ... scored 10 points at AF on 3/1/08 for her 19th career, eighth season and fourth in MWC action ... picked up her 18th career and seventh season double figure game with 11 points at UNLV on 2/16/08 ... in the home victory over CSU on 2/13/08 tallied her 17th career and sixth season double digit contest with a team and game high 14 points ... ranks second on the team in points and in rebounds with 7.4 points and 5.5 boards per contest ... grabbed 12 boards in the contest against No.15 Wyoming on 2/2/08 for new season and career highs ... in the road game at UNM on 1/26/08 scored 12 points marking her 16th career double digit game, her fifth of the year and her first in MWC play ... grabbed 11 rebounds vs. New Mexico St. on 12/5/07 ... tallied 10 points vs. UCLA on 12/15/07 for her 15th career double figure game and the fourth this season ... finished her junior season in second place in a total of six categories: three-point field goals attempted 92 (3.2) and made 27 (0.9), field goal attempted .258 (8.9), in total rebounds 160 (5.5), offensive boards with 49 (1.7) and defensive boards 111 (3.8) ... ended the year third in two stat categories: field goals made with 89 (3.1), and in steals 25 (0.9) ... placed fifth in three-point field goal percentage .293 (17-58) and eighth in field goal percentage .345 (89-258).

Slade	Season Highs	Career Highs
Points:	18 vs. SUU, 11/28/08	22 vs. SCU, 11/22/06
Rebounds:	8 @ CSU, 2/11/09, twice more	12 vs. Wyoming, 2/2/08
3-PT FG's Made:		4 @ UNM, 01/10/07
Assists:	5 vs. CSU, 1/10/09, once more	same
Steals:	3 @ Long Beach St. 12/20/08, once more	same, five more
Blocks:		2 vs. SDSU, 02/24/07

Slade Statistics										
Yr	G/GS	FG-FGA %	FT-FTA %	3-pts %	Pts.	Reb.	A.	St.	Bl.	To.
06	32/0	38-101 .376	21-29 .724	6-17 .353	103	70	19	16	1	22
07	32/7	99-278 .356	29-53 .547	22-76 .289	249	147	67	35	9	63
08	29/29	89-258 .345	11-23 .478	27-92 .293	216	160	47	25	7	55
09	22/22	85-233 .365	23-39 .590	24-72 .333	217	92	35	25	10	36

Cassie King
Center
6-3, Senior
Provo, UT - Provo HS

#54



At BYU

SENIOR - (2008-2009): Has started in all games ... led all scorers with 15 points in the MWC game at CSU for her seventh double figure contest this year and her 12th career ... recorded her first ever double-double with 19 points and 13 rebounds in the road win at UNLV on 1/21/09... the 19 points in that same game mark her sixth double digit output on the year and her 11 overall, while the 13 boards were also season and career highs ... grabbed a team and game high nine boards in the game vs. Arkansas St., on 12/30/08 ... tied her season and career high with 14 points vs. Utah St., which were team highs and mark her fourth and ninth season and career double figure performance respectively ... in the Utah St., game was perfect at the line going 8-8 ... recorded 14 points vs. USC on 12/6/08 ... grabbed a game high 10 boards vs. Oregon on 11/21/08 ... in that same game, had three blocks which are new season and career highs ... ranks first on the team in the rebound category grabbing 5.8 boards per game ... has the team's best free throw percentage at .833 (20-24), and the best field goal percentage at .583 (67-115) ... is tied for third place in scoring with 7.4 points per contest ... scored 11 points at Nevada on 11/18/08 for her first double figure contest of the 2008-09 campaign.

JUNIOR - (2007-2008): Final player notes: played in all 29 games, starting in three ... picked up an MWC Scholar Athlete Award ... named Academic All-MWC for the third straight time ... scored 10 points in the AF game on 3/1/08 for her fourth double digit scoring performance and the second in league action ... grabbed a new season high in boards with eight in the game at UNLV on 2/16/08 ... picked up 10 points vs. Wyoming on 2/2/08 marking her third double digit output of the year, and was perfect from the field 5-5 ... grabbed season highs in rebounds with eight @ UNLV on 2/16/08 and was perfect from the free throw line 3-3 ... picked up new season and career highs in points with 13 vs. UCLA on 12/15/07 ... had 10 points at Weber State on 12/12/07 ... led the team in points in two games, in steals in one and in blocks in six total games on the year ... finished first on the team in field goal percentage .538 (50-93) ... ranked third in three categories: free throw attempts 42 (1.4) and free throws made 31 (1.1), and in blocked shots with 15 (0.5) ... placed fourth in two categories: free throw percentage .738 (31-42) and offensive rebounds with 30 (1.0) ... averages 4.7 points and 2.8 rebounds and played 13.5 minutes per game.

King	Season Highs	Career Highs
Points:	19 @ UNLV, 01/21/09	same
Rebounds:	13 @ UNLV, 01/21/09	same
Assists:	4 @ UNLV, 01/21/09	same
Steals:	3 vs. Arkansas St., 12/30/08	same
Blocks:	3 vs. Oregon, 11/21/08	same

King Stats										
Yr	G/GS	FG-FGA %	FT-FTA %	3-pts %	Pts.	Reb.	A.	Bl.	St.	To.
06	23/0	7-22 .318	9-12 .750	0-1 .000	23	30	1	7	2	6
07	32/0	45-95 .474	16-27 .600	5-18 .297	111	84	12	14	7	36
08	29/3	50-93 .538	31-42 .738	4-6 .667	135	81	15	15	10	31
09	22/22	70-119 .588	22-26 .846	1-3 .333	163	130	12	11	23	37

Sarah Red Hostetter
Guard/Forward
5-11, Senior
Provo, UT - Timpview HS

#14



At BYU

SENIOR - (2008-2009): Has played in all games to date this year ... scored season and career highs in points with 13 vs. Oregon on 11/21/08 ... in that same game had season and career highs in assists (2) and steals (2) ... tallied nine points in the league game at SDSU on 1/24/09 to mark the highest scoring performance in MWC action to date ... recorded seven points in the road game at Wyoming on 1/31/09.

JUNIOR - (2007-2008): Final player notes: got her first start on 2/19/08 in the league game at Utah and played in 21 of the 29 games on the year ... in the home game vs. CSU on 2/13/08 grabbed a season and career high three boards ... picked up season and career highs in points with seven at SDSU on 01/23/08 ... finished the season ranked third in two categories: field goal percentage .450 (18-40) and in three-point field goal percentage with .471 (8-17) ... placed fifth in two categories: three-point field goals made 8 (0.4) and in free throw percentage .714 (5-7) ... averaged 5.8 minutes and 2.3 points per game.

SOPHOMORE – (2006-2007): REDSHIRT

Other College

At University of Utah:

Freshman (2004-05): Played in eight games for an average of 3.6 minutes ... of those games four were on the road ... picked up a season high three points @ AF on 01/20/05 ... finished the season with an 12.5 field goal percentage and 50.0 free throw percentage.

Red Hostetter

Points:

Rebounds:

3-PT FG's made:

Assists:

Steals:

Blocks:

Season Highs

13 vs. Oregon, 11/21/08

2 vs. Weber St., 12/10/08

2 vs. SUU, 11/28/08, once more

2 vs. SUU, 11/28/08, once more

Career Highs

same

3 vs CSU, 2/13/08

2 @ UNLV, 2/16/08

same

same

2 vs. UNM, 03/12/08

Red Hostetter Stats										
Yr	G/GS	FG-FGA %	FT-FTA %	3-pts %	Pts.	Reb.	A.	Bl.	St.	To.
08	21/1	18-40 .450	5-7 .714	8-17 .471	49	8	3	2	7	7
09	22/0	24-74 .324	9-14 .643	8-34 .235	65	18	17	4	11	19

Jaime Judkins
Guard
5-6, Junior
Salt Lake City, UT - Skyline HS

#13



At BYU

JUNIOR - (2008-2009): Has played in 15 games so far this season ... was perfect from the line 2-2 for her two points vs. CSU on 1/10/09 ... picked up new season and career highs in points with seven in the game at Portland on 01/03/09 ... is averaging 5.0 minutes of playing time.

SOPHOMORE - (2007-2008): Final player notes: played in 26 of the 29 games to date, starting in the game at Sacred Heart on 12/01/07 ... averaged 0.7 points and 0.5 rebounds per game ... picked up season and career highs in points and in rebounds in the game at UCSB on 11/9/07 with five points and three boards ... dished out season highs in assists with three in the contest at Weber State on 12/12/07 ... played an average of 7.0 minutes per game ... named Academic All-MWC.

FRESHMAN - (2006-2007): Final player notes: Played in a total of 23 games averaging 3.1 minutes of playing time ... of those 23 contests, eight were against conference opponents and she also saw action in the NCAA first round game vs. Louisville on 03/17/07 ... picked up a season high in points with three in the first game of the year vs. ISU on 11/10/06 ... grabbed a season and career high rebounds with three @ Baylor on 11/16/06 ... dished out a season and career high three assists vs. AF on 02/08/07, and in that same game played a new season and career high 13 minutes.

Judkins

Points:

Rebounds:

3-PT FG's made:

Assists:

Steals:

Season Highs

7 @ Portland, 01/03/09

Career Highs

same

3 @ UCSB, 11/09/07, once more

1 @ SDSU, 1/23/08, three more

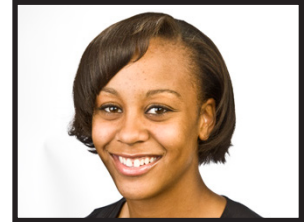
3 vs. AF, 02/08/07, once more

1 @ AF, 3/1/08, four more

Judkins Stats										
Yr	G/GS	FG-FGA %	FT-FTA %	3-pts %	Pts.	Reb.	A.	Bl.	St.	To.
07	23/0	1-6 .167	2-5 .400	1-4 .250	5	13	7	0	2	11
08	26/1	5-26 .192	4-4 1.000	4-22 .182	18	14	18	0	5	17
09	15/0	4-10 .400	6-7 .857	3-7 .429	17	3	5	0	3	3

Jazmine Foreman
Guard
5-5, Sophomore
Vancouver, WA - Hudson's Bay HS

#3



At BYU

SOPHOMORE - (2008-2009): Has started in all but the first game of the year ... led the team in points with 10 vs. AFA on 2/4/09 marking her fifth double-digit scoring performance of the season and career ... had back-to-back league games where she grabbed six rebounds, vs. Utah on 1/28/09 and at Wyoming on 1/31/09 ... led the team and game in points with 16 vs. UNM on 1/17/09 marking her fourth double digit performance of the year and career ... grabbed a team, season, and career high nine boards in the road win at TCU on 1/13/09 ... scored a season and career high 19 points vs. USC on 12/6/08 to lead all scorers, she also had a team and game high six assists and she was perfect from the free-throw line 4-4, two of those points sealed the Cougar victory over the Trojans in the final seconds of the contest ... the 19 points marked her third double figure performance of the season... dished out eight assists vs. Wright St., on 12/5/08 for new season highs and grabbed four boards for new season and career highs in that category ... is in first place in the assist category with 83 and is second in steals with 32 to date, four of those coming vs. Weber St., on 12/10/08 for season and career highs ... has the team's third best free throw percentage at .765 (26-34) ... had back-to-back double digit scoring performances, 12 at Portland St., and 10 at Nevada.

FRESHMAN - (2007-2008): Final player notes: started in nine of the 29 games, and played in all games ... averaged 1.7 points and 1.0 rebounds and finished fourth best in assists dishing out 43 on the season ... tallied season and career highs in points with eight vs. Fresno St., on 11/17/07 ... in rebounds with three @ Ark. St., on 11/13/07 ... picked up season highs in assists with eight vs. Utah Valley State on 12/08/07 and in free throw percentage going 3-3 ... led the team in assists in four games and one in steals with three vs. Seton Hall on 11/23/07 ... ranks fourth on the team in assists with 43 (1.5) ... fifth in two categories: three-point field goals attempted 36 (1.2), and in steals with 11 (0.4) ... placed sixth in three-point field goals made with eight (0.3) ... seventh in three-point field goal percentage .222 (8-36) ... and eighth in the free throw percentage category .55 (8-16) ... named Academic All-MWC.

Foreman	Season Highs	Career Highs
Points:	19 vs USC, 12/06/08	same
Rebounds:	9 @ TCU on 1/13/09	same
3-PT FG's made:	3 vs. USC, 12/6/08	same
Assists:	8 vs. Wright St., 12/5/08 @ HI	same, once more
Steals:	4 vs. Weber St., 12/10/08	same

Statistics		Foreman Stats									
Yr	G/GS	FG-FGA %	FT-FTA %	3-pts %	Pts.	Reb.	A.	Bl.	St.	To.	
08	29/9	17-75 .227	8-16 .500	8-36 .222	50	28	43	0	11	50	
09	22/21	57-164 .348	26-34 .765	18-68 .265	158	88	83	0	32	59	

Megan Marks
Forward
6-2, Sophomore
South Jordan, UT - Bingham HS

#55



At BYU

SOPHOMORE - (2008-2009): Has played in 14 games to date ... grabbed new season and career highs in the rebound category with six at Portland on 01/03/09 ... scored eight points in the game vs. SUU on 11/28/08 for new season and career highs in that category, and was a perfect 4-4 from the field ... with the eight points she surpassed last year's total points by two to 10 ... is averaging 4.8 minutes of playing time. During her freshman season she had a total of eight points after playing in 14 games.

FRESHMAN - (2007-2008): Final player notes: played in 14 of the 29 games on the year ... averaged 3.9 minutes of playing time ... picked up season and career high in points with three in the game at Wyoming on 3/5/08 ... grabbed four rebounds in two games, at Wyoming on 3/5/08 and vs. Fresno State on 11/17/07 ... had a season and career high two blocks @ Utah on 2/19/08 ... played the most minutes (17) @ Wyoming on 3/5/08 ... named Academic All-MWC.

Marks

Points:

Rebounds:

3-PT FG's made:

Assists:

Steals:

Blocks:

Season Highs

8 vs. SUU, 11/28/08

6 @ Portland, 01/03/09

Career Highs

same

same

1 @ Wyoming, 03/05/08

1 vs. Fresno St, 11/17/07

none

2 @ Utah, 02/19/08

Marks Stats

Yr	G/GS	FG-FGA %	FT-FTA %	3-pts %	Pts.	Reb.	A.	Bl.	St.	To.
08	14/0	3-13 .231	1-3 .333	1-6 .167	8	14	1	4	0	2
09	14/0	8-16 .500	3-6 .500	1-3 .333	20	20	3	1	2	11

Keilani Moeaki
Forward
6-2, Sophomore
Warrenville, IL - Weaton Warrenville HS

#45



At BYU

SOPHOMORE - (2008-2009): Has started in all games ... with a team and game high 13 points in the road game at Wyoming on 1/31/09 she now has five double digit contests this season and eight in her career ... recorded 12 points in the home game vs. Utah for her fourth this year and her seventh overall double digit performance ... grabbed eight boards vs. Utah St., which mark new season and career bests ... picked up 14 points at Nevada for new season highs ... ranks sixth in the rebound category grabbing 3.4 boards per contest.

FRESHMAN - (2007-2008): Final player notes: played in all 29 games and started in nine ... averaged 16.4 minutes of playing time per game ... picked up a season and career high 19 points and seven rebounds vs. Hartford on 11/20/07, in that same game was .700 (7-10) from the free throw line, and had three steals for season and career highs ... finished ranked sixth in scoring on the team with 3.6 points and tied for fourth place in the rebound category, grabbing 2.9 boards per contest ... was perfect from the free throw line 4-4 at USU on 12/29/07 ... ranked third in offensive rebounds with 33 (1.1) ... placed fourth in three categories on the team: field goal percentage .433 (39-90), free throw attempts 40 (1.4) and free throws made 20 (0.9) ... ranked seventh on the team at the end of the year in free throw percentage .650 (26-40).

Moeaki

Points:

Rebounds:

3-PT FG's made:

Assists:

Steals:

Blocks:

Season Highs

14 @ Nevada, 11/18/08

8 vs. Utah St., 12/13/08

3 vs. USC @ HI

2 @ TUC, 01/13/09, twice more

2 vs. AFA, 2/4/09, three more

Career Highs

19 vs. Hartford, 11/20/07

same

1 vs. Utah, 1/19/08

same, twice more

same, three more

same, three more

Moeaki Stats

Yr	G/GS	FG-FGA %	FT-FTA %	3-pts %	Pts.	Reb.	A.	Bl.	St.	To.
08	29/9	39-90 .433	26-40 .650	1-2 .500	105	84	26	7	8	70
09	22/22	54-126 .429	21-33 .636	4-16 .250	133	74	15	18	18	54

Mindy Nielson

Guard

5-10, Sophomore

Centennial, CO - Regis Jesuit HS

#22



At BYU

SOPHOMORE - (2008-2009): Has started in all game ... tallied a team and game high four steals in the road game at Wyoming on 1/31/09 ... had new season and career highs in steals with six in the road win at UNLV on 1/21/09 ... in that same game posted 21 points to lead all scorers, and mark her eighth double figure game of the year and 15th career ... grabbed eight boards in the home game vs. UNM on 1/17/09 for new season and career highs in that category ... scored a team and game high 22 points in the road win at TCU on 1/13/09 for the second best scoring performance of the season and career ... the 22 points also marked her seventh and 14th career double digit output ... led the team and game in scoring with 13 vs. Arkansas St., on 12/30/08 for her sixth double digit contest of the year and the 13th in her career ... grabbed a total of seven boards for new season highs and tied her career high as well in the home win vs. CSU ... tallied 12 points in the game at Long Beach St., for her fifth double figure game of the year and 12th career ... tied her season best seven assists vs. Utah St., ... contributed 11 points in the home win against Weber St., on 12/10/08 marking her fourth double figure contest of the year and 11th overall ... scored 20 points vs. Wright State for her third double digit output of the season and her 10th overall ... tallied new season and career highs in points with 27 at Nevada ... the 27 points were game and team highs as well ... was 9-10 from the free throw line in that same game ... leads the team in scoring and in steals with 10.7 points and a total of 45 steals ... is second in assists dishing out 73 this year.

FRESHMAN - (2007-2008): Final player notes: in league action finished the year ranked 29th in scoring (7.3) points per game, eighth in assists dishing out (2.76) per MWC game and 11th in steals (1.59) per game, and was tied in 14th place in blocked shots (0.69) per contest ... started in the last 19 games beginning with the game vs. UCLA on 12/15/07, and played in all games with an average of 27.9 minutes of playing time ... tallied a new season and career high in points with 16 at UNLV on 2/16/08 ... in the home game vs. CSU on 02/13/08 dished out new season and career highs in assists with nine ... had back-to-back games where she scored in double figures with 15 in the game vs. UCLA on 12/15/07 and 15 points at Weber St., on 12/12/07 ... in the game vs. UCLA also picked up season highs in rebounds with seven and in assists with six and was perfect from the free throw line going 6-6 ... picked up season and career highs in steals (5), and blocks (5) vs. Utah Valley on 12/08/07 ... scored in double figures in seven games, including four in league action ... led the team in points in three games ... topped the list in assists in 14 games and in steals in 10 contests on the year ... finished the season ranked first in three categories: free throws attempted 65 (2.2), in assists with 80 (2.8) and in steals with a total of 46 (1.6) ... places second in two stat categories: free throws made 46 (1.6), and in blocked shots with 20 (0.7) ... placed third in three categories: in three point field goals attempted 58 (2.0), in three-point field goals made with 17 (0.6) and in field goals attempted 200 (6.9) ... in three other categories finished in fourth place: field goals made 74 (2.6), in rebounds with a total of 85 (2.9) and in defensive boards with 72 (2.5) ... is in sixth place in free throw percentage .708 (46-65) and in three-point field goal percentage .293 (17-58) ... places in seventh on the team in the field goal percentage category with a .370 percentage (74-200) ... ranks third on the team in scoring with an average of 7.3 points per game ... is the team's assists leader with 80 on the season.

Nielson

Points:

Rebounds:

3-PT FG's made:

Assists:

Steals:

Blocks:

Season Highs

27 @ Nevada, 11/18/08

8 vs. UNM, 1/17/09

7 vs. Utah St. 12/13/08, once more

6 @ SDSU, 1/24/09, once more

Career Highs

same

same

3 @ UNLV, 2/16/08, once more

9 vs. CSU, 02/13/08

same, once more

5 vs. Utah Valley, 12/08/07

Nielson Stats

Yr	G/GS	FG-FGA	%	FT-FTA	%	3-pts	%	Pts.	Reb.	A.	Bl.	St.	To.
08	29/19	74-200	.370	46-65	.708	17-58	.293	211	85	80	20	46	95
09	22/22	93-241	.386	35-45	.778	15-67	.224	236	87	73	13	45	53

Coriann Wood
Forward
6-1, Sophomore
Basin City, WA - Cornell HS

#23



At BYU

SOPHOMORE - (2008-2009): Has played in all games ... grabbed nine boards for team, season, and career-highs vs. AF on 2/4/09 ... tallied six rebounds in each of the last two MWC games, vs. Utah on 1/28/09 and at Wyoming on 1/31/09 ... recorded a team high 13 points in the home game vs. Utah for her seventh double digit contest of the year and her eighth overall, and in that same game dished out new season and career highs in assists with three ... tied season highs in both assists and steals with two each vs. CSU on 1/10/09 ... had two blocks for new season and career highs in that category in the home win vs. CSU on 01/10/09 ... grabbed new season and career highs in the rebound category with eight vs. USC ., on 12/06/08 ... recorded her sixth double figure game of the year and seventh career with 10 points in the game at Long Beach St., ... has a total of five double digit scoring performances on the year and six overall with the 13 points scored vs. Utah St., on 12/13/08 ... the points mark three back-to-back double figure games with the 15 vs. Weber St., (which were season and career highs) and 14 vs. USC ... in the home game vs. SUU on 11/28/08 scored 10 points which at that time tied her season high ... in the game at Nevada on 11/18/08 tied her career highs in rebounds with five ... in the home game vs. UConn was perfect from the line 4-4 ... is in second place on the team in rebounds grabbing 5.0 boards per contest ... ties for fourth place on the team in points scoring 7.2 per contest.

FRESHMAN - (2007-2008): Final player notes: played in 27 of the 29 games on the year and started in one, at Sacred Heart on 12/01/07 ... averaged of 10.6 minutes of playing time ... scoring 3.6 points and 2.3 boards per game ... picked up a season high in points with 13, in three-pointers made with three and in blocks with two at CSU on 01/12/08 ... grabbed a season high in rebounds with five at UConn on 11/29/07 ... was perfect from the free throw line 4-4 at Sacred Heart on 12/1/07 ... finished the year in second on the team free throw percentage .909 (20-22) ... placed fourth in three-point field goals attempted 47 (1.7) ... fifth in field goals attempted 47 (1.7), and in free throws made 20 (0.7) ... eighth in three-point field goal percentage .213 (10-47) ... and ninth in field goal percentage .330 (31-94) ... named Academic All-MWC.

Wood	Season Highs	Career Highs
Points:	15 vs. Weber St., 12/10/08	same
Rebounds:	9 vs. AFA, 02/04/09	same
3-PT FG's made:		3 @ CSU, on 01/12/08
Assists:	3 vs. Utah, 01/28/09	same
Steals:	2 vs. CSU, 01/10/09, once more	same
Blocks:	2 @ UNLV, 01/21/09, once more	same

Wood Stats										
Yr	G/GS	FG-FGA %	FT-FTA %	3-pts %	Pts.	Reb.	A.	Bl.	St.	To.
08	27/1	31-94 .330	20-22 .909	10-47 .213	92	63	7	5	7	29
09	22/0	52-141 .369	29-42 .690	25-63 .397	158	109	16	7	18	31

Haley Hall **#33**
Guard
5-4, Sophomore
Syracuse, UT - Clearfield HS

#33



At BYU

SOPHOMORE - (2008-2009): Started in the first game of the year at Portland St., on 11/14/08, tallying 11 points and was 6-6 at the free throw line ... suffered a season-ending ACL injury to her right knee with a minute left in the same game ... will not play the rest of the season.

(2007-08): Injury redshirt

FRESHMAN - (2006-2007): Final player notes: Suffered season ending injury with a torn ACL to her left knee in the game @ New Mexico State on 12/06/06 ... Had played in all games to date ... picked up a season and career 15 points @ No. 4 Stanford on 11/10/06 to lead all scores in that game ... had four three-pointers in the same game ... scored in double figures in two games to date (15) @ Stanford, (10) @ Harvard.

Hall	Season Highs	Career Highs
Points:	11 @ Portland St., 11/14/08	15 @ Stanford, 11/10/06
Rebounds:	3 @ Portland St., 11/14/08	same, once more
3-PT FG's made:		4 @ Stanford, 11/10/06
Assists:	4 @ Portland St., 11/14/08	same, once more
Steals:	4 @ Portland St., 11/14/08	same

Yr	G/GS	Hall Stats				Pts.	Reb.	A.	Bl.	St.	To.
		FG-FGA %	FT-FTA %	3-pts %	%						
07	7/0	15-39 .385	5-8 .625	9-20 .450	44	12	17	1	6	19	
09	1/1	2-9 .222	6-6 1.000	1-3 .333	11	3	4	0	4	5	

Stephanie Buhler
Forward
6-0, Freshman
Oregon City, OR - Oregon City HS

#21



At BYU

FRESHMAN - (2008-2009): Has played in 15 games to date ... recorded new season and career highs in points with nine vs. TCU on 2/14/09, all coming from three-point range ... scored three treys in the game vs. TCU on 2/13/09 for new season and career highs in that category ... picked up six points in the game at Portland on 01/03/09 ... in that same game had two steals for season and career highs as well ... scored two points in the game at Long Beach St., ... is averaging 5.3 minutes of playing time.

FRESHMAN - (2007-2008): Redshirt

Before BYU

Four-year letterwinner in basketball ... competed one year at Sandy HS where she garnered Honorable Mention honors. At Oregon City HS ...team was Three Rivers League Champions all three seasons ... named Second Team All-League her senior year ... ranks third all time in three-point shooting ... is also tops in the free throw category ... garnered Second Team All League honors during the 2006-07 season ... ranks second in state as a three-point shooter ... two-time Honorable Mention All State ... named Oregonian Athlete of the Week ... named to the All-Tournament Team at the Delaware and the Gillett, Wyoming Classics ... in state high school competition, the 2004-05 team finished third ... in 2005-06 team finished second and in 2006-07 team ended the year in sixth place ... Played on two club teams (Triple Threat Oregon two years) ... and on (Clutch Players for three years)

Buhler	Season Highs	Career Highs
Points:	9 vs. TCU, 02/14/09	same
Rebounds:	1 @ Long Beach St., 12/20/08	same
3-PT FG's made:	3 vs. TCU, 02/14/09	same
Assists:	1 vs. UConn on 11/25/08	same
Steals:	2 @ Portland, 01/03/09	same

Buhler Stats									
Yr	G/GS	FG-FGA %	FT-FTA %	3-pts %	Pts.	Reb. A.	Bl.	St.	To.
09	15/0	10-28 .357	3-3 1.000	7-25 .280	30	1 7	2	5	8

Jenteal Jackson
Guard
5-7, Freshman
Salt Lake City, UT - Skyline HS

#1



At BYU

FRESHMAN - (2008-2009): Has played in 21 games to date ... had two steals vs. AF on 2/4/09 for new season and career-highs ... scored five points in the home game vs. UNM on 1/17/09 for new season and career highs in that category ... tied her season and career highs in rebounds and in assists with three at Long Beach St., on 12/20/08 ... in the home game vs. Weber St., scored four points for season and career highs in that category ... is averaging 7.7 minutes of playing time per game, playing a season high nine minutes vs. Weber St., on 12/10/08 ... dished out three assists and three rebounds vs. Oregon on 11/21/08 for season and career highs in both categories.

Before BYU: Four-year letterwinner in basketball ... Region MVP in 2008 ... played on team that took First Place in Region 2004-2008, and was undefeated in Region in 2007 and 2008 ... First Team All-State in 2007 and 2008 ... named Salt Lake Tribune and Deseret News First Team All-State ... 2008 Deseret News Ms. Basketball ... 2008 Salt Lake Tribune 5A MVP ... Nominated to McDonald's All-American Team ... participated in Adidas Top Ten Camp ... four-year letterwinner in golf ... five-time Utah Jr. Golf State Amateur Champion ... academic high school Honor Roll ... played for Utah Flight Club Team in 2007 ... will also play on BYU's women's golf team.

Jackson	Season Highs	Career Highs
Points:	5 vs. UNM 01/17/09	same
Rebounds:	3 @ LB St., 12/20/08, once more	same
3-PT FG's made:		
Assists:	3 @ LB St., 12/20/08, once more	same
Steals:	2 vs. AFA, 02/04/09	same

		Jackson Stats								
Yr	G/GS	FG-FGA %	FT-FTA %	3-pts %	Pts.	Reb.	A.	Bl.	St.	To.
09	21/0	7-35 .200	3-4 .750	2-21 .095	19	13	17	0	7	19

Alexis Kaufusi
Forward
6-1, Freshman
Provo, UT - Timpview HS

#10



Before BYU: Four-year letterwinner in basketball ... Region Champs in 2007 and 2008 and was undefeated in 2008 ... two-time team MVP ... team captain ... two-time All-Region honoree ... two-time All-Valley accolades ... First Team All-State in 2007 and 2008 ... named state MVP... two-year letterwinner in soccer ... one year letterwinner in softball ... academic high school Honor Roll ... played three years for the Salt Lake Metro Club Team, 2006-2008.

Kaufusi	Season Highs	Career Highs
Points:		
Rebounds:		
3-PT FG's made:		
Assists:		
Steals:		

Kaufusi Stats										
Yr	G/GS	FG-FGA %	FT-FTA %	3-pts %	Pts.	Reb.	A.	Bl.	St.	To.
09										

Dani Peterson
Forward
6-1, Freshman
Salt Lake City, UT - Skyline HS

#24



At BYU

FRESHMAN - (2008-2009): Has played in 13 games to date ... scored four points for her fourth four-point performance of the year at SDSU on 01/24/09 ... grabbed a new season and career high five boards at Portland on 1/03/09 ... tied her season best four points at Long Beach St., on 12/20/08 ... picked up four points and four in the home opener against Oregon on 11/21/08 ... is averaging 6.2 minutes of playing time.

Before BYU: Four-year letterwinner in basketball ... two-time team MVP ... four-year starter ... team captain in 2007-08 ... named 2008 Utah Gatorade Player of the Year ... team won 5A Championship in 2006 and 2008 and finished second in 2007 ... named 5A Tournament MVP ... current state record-holder in individual field goal percentage with 64.8 (140-216) in 2006-07 season ... three-time Salt Lake Tribune 5A First Team All State ... two-time 5A All Tournament Team ... 2008 Deseret Morning News 5A MVP ... two-time Deseret Morning News Second Team All State ... 2008 McDonald's All-America nominee ... 2007 End of the Trail All-Tournament Team ... 2007 Adidas All-American Camp All-Star ... 2005 Pacific Coast Shootout All-Tournament Team ... played for the Salt Lake Metro Basketball Club in 2006 and 2007 and with the Utah Storm Basketball Club in 2005 ... three-year letterwinner in soccer ... team captain in 2007-08 season.

Peterson

Points:

Rebounds:

3-PT FG's made:

Assists:

Steals:

Season Highs

4 @ SDSU, 01/24/09, three more

5 @ Portland, 01/03/09

Career Highs

same, three more

same

Peterson Stats													
Yr	G/GS	FG-FGA	%	FT-FTA	%	3-pts	%	Pts.	Reb.	A.	Bl.	St.	To.
09	13/0	6-27	.222	8-10	.800	0-2	.000	20	20	0	3	3	5

Kristen Riley
Forward/Center
6-3, Freshman
San Clemente, CA - San Clemente HS

#35



At BYU

FRESHMAN - (2008-2009): Has played in all games to date ... at TCU on 1/13/09 tied a season high in assists with two ... grabbed a team high eight rebounds @ SDSU on 1/24/09 for new season and career highs ... seven boards at Portland on 01/03/09 ... has had four games where she has grabbed five rebounds ... in the home game vs. SUU on 11/28/08 scored nine points for new season and career highs, was 4-6 from the field ... in the home game vs. Oregon on 11/21/08 scored four points.

Before BYU: Four-year letterwinner in basketball ... team was South Coast League Champs from 2005-2008 and CIF Southern Section Div. 1AA Champs in 2007 ... three-time MVP for South Coast League (2006-2008) ... two-time team captain 2007 and 2008 ... named to the All CIF Div. 1AA Southern Section First Team in 2007 and 2008 ... garnered Orange County Register All County First Team honors in 2007 and Orange County Register Player of the Year in 2008 ... was a four-time All South Coast League Selection ... had the San Clemente HS single game rebound record (25) and the season rebound record in 2007 (379) ... named Division 1 All-State ... nominated to the Mc Donald's All-America Team.

Riley	Season Highs	Career Highs
Points:	9 vs. SUU, 11/28/08	same
Rebounds:	8 @ SDSU, 01/24/09	same
3-PT FG's made:		
Assists:	2 @ TCU, 01/13/09, twice more	same
Steals:	2 @ SDSU, 01/24/09	same
Blocks:	3 @ SDSU, 01/24/09	same

Riley Stats										
Yr	G/GS	FG-FGA	%	FT-FTA	%	3-pts	%	Pts.	Reb. A.	Bl. St. To.
09	22/0	29-86	.337	22-35	.629	3-17	.176	83	76 14	11 15 36

2008-09 WALKONS

Marie Beck
Guard
5-8, Sophomore
Oxnard, CA - Channel Islands HS

#31**AT BYU:**

SOPHOMORE - (2008-09): Played in her first game of the season at Long Beach St., on 12/20/08 picking up one point and one rebound.

FRESHMAN - (2007-08): Saw action in three games on the year ... received an MWC Scholar Athlete Award.

BEFORE BYU

School Valedictorian, Ventura County Star Athlete ... AP Scholar ... Top Honors Scholar ... Three-year letterwinner in basketball ... MVP in 2007 ... Athlete of the Year in 2007 ... Second Team All League in 2006 ... First Team All League 2007 ... Second Team All County 2007 ... four-year letterwinner in softball ... three time softball MVP 2005-2007.

Marianne Bell
Forward
6-1, Sophomore
Ashburn, VA - Stone Bridge HS

#34**BEFORE BYU**

National Honor Society ... Athletic Honor Roll ... four-year letterwinner in basketball (three at Stone Bridge HS and one at Bruton HS) ... Co-MVP in 2006 ... MVP in 2007 ... holds school (Stone Bridge) record for most points scored in a season and career ... hold record for most rebounds in a season and career ... Second Team All District (2005 and 2006) ... First Team All-District in 2007 ... First Team All-Region in 2007 ... two-year letterwinner in volleyball ... First Team All- District and Region in 2007... Second Team All-District 2006 ... Honorable Mention All-State 2007 ... one-year letterwinner in tennis ... played one season for Potomac Valley Vogues ... team finished ninth at the AAU nationals in 2006.

Brigham Young University
Brigham Young Combined Team Statistics (as of Feb 14, 2009)
All games

Overall record: 16-6 Conf: 6-4 Home: 7-4 Away: 7-2 Neutral: 2-0

##	Player	gp-gs	min	avg	Total		3-Point		F-Throw		Rebounds				pf	dq	a	to	blk	stl	pts	avg
					fg-fga	fg%	3fg-fga	3fg%	ft-fa	ft%	off	def	tot	avg								
22	NIELSON, Mindy	22-22	699	31.8	93-241	.386	15-67	.224	35-45	.778	22	65	87	4.0	47	0	73	53	13	45	236	10.7
32	SLADE, Shawnee	22-22	658	29.9	85-233	.365	24-72	.333	23-39	.590	42	50	92	4.2	41	0	35	36	10	25	217	9.9
54	KING, Cassie	22-22	468	21.3	70-119	.588	1-3	.333	22-26	.846	44	86	130	5.9	49	1	12	37	11	23	163	7.4
03	FOREMAN, Jazmine	22-21	676	30.7	57-164	.348	18-68	.265	26-34	.765	19	69	88	4.0	56	2	83	59	0	32	158	7.2
23	WOOD, Coriann	22-0	419	19.0	52-141	.369	25-63	.397	29-42	.690	31	78	109	5.0	56	2	16	31	7	18	158	7.2
45	MOEAKI, Keilani	22-22	453	20.6	54-126	.429	4-16	.250	21-33	.636	33	41	74	3.4	49	0	15	54	18	18	133	6.0
35	RILEY, Kristen	22-0	298	13.5	29-86	.337	3-17	.176	22-35	.629	32	44	76	3.5	41	0	14	36	11	15	83	3.8
14	HOSTETTER, Sarah R	22-0	282	12.8	24-74	.324	8-34	.235	9-14	.643	10	8	18	0.8	24	0	17	19	4	11	65	3.0
21	BUHLER, Stephanie	15-0	79	5.3	10-28	.357	7-25	.280	3-3	1.000	0	1	1	0.1	5	0	7	8	2	5	30	2.0
24	PETERSON, Dani	13-0	80	6.2	6-27	.222	0-2	.000	8-10	.800	9	11	20	1.5	11	0	0	5	3	3	20	1.5
55	MARKS, Megan	14-0	65	4.6	8-16	.500	1-3	.333	3-6	.500	3	17	20	1.4	14	0	3	11	1	2	20	1.4
01	JACKSON, Jenteal	21-0	162	7.7	7-35	.200	2-21	.095	3-4	.750	4	9	13	0.6	20	0	17	19	0	7	19	0.9
13	JUDKINS, Jaime	15-0	74	4.9	4-10	.400	3-7	.429	6-7	.857	2	1	3	0.2	4	0	5	3	0	3	17	1.1
31	BECK, Marie	2-0	4	2.0	0-1	.000	0-1	.000	1-2	.500	0	1	1	0.5	0	0	0	0	0	0	1	0.5
34	BELL, Marianne	1-0	2	2.0	0-0	.000	0-0	.000	0-0	.000	0	0	0	0.0	0	0	0	0	0	0	0	0.0
Team											51	52	103				4					
Total.....		22	4450		501-1310	.382	112-402	.279	217-306	.709	303	535	838	38.1	418	5	301	380	80	211	1331	60.5
Opponents.....		22	4451		429-1182	.363	90-326	.276	304-433	.702	298	552	850	38.6	327	-	243	444	55	148	1252	56.9

TEAM STATISTICS	BY	OPP	Date	Opponent	Score	Att.	
SCORING	1331	1252	11/14/08	at PSU	L	64-73	626
Points per game	60.5	56.9	11/18/08	at Nevada	w	81-63	426
Scoring margin	+3.6	-	11-21-08	OREGON	w	67-45	502
FIELD GOALS-ATT	501-1310	429-1182	11-25-08	UCONN HUSKIES	L	47-96	3109
Field goal pct	.382	.363	11-28-08	SOUTHERN UTAH TBIRDS	w	70-64	762
3 POINT FG-ATT	112-402	90-326	12/5/08	vs WSU	w	56-50	89
3-point FG pct	.279	.276	12/06/08	vs Univ. of Southern California	w	65-64	300
3-pt FG made per game	5.1	4.1	12-10-08	WEBER STATE UNIVERSITY	w	76-69	443
FREE THROWS-ATT	217-306	304-433	12-13-08	UTAH STATE AGGIES	wot	61-60	604
Free throw pct	.709	.702	12/20/08	at Long Beach State	w	66-49	458
F-Throws made per game	9.9	13.8	12/30/08	ARKANSAS STATE UNIVERSITY	w	49-39	514
REBOUNDS	838	850	1/3/09	at Portland	w	65-37	420
Rebounds per game	38.1	38.6	* 01-10-09	COLORADO STATE UNIVERSITY	w	61-43	672
Rebounding margin	-0.5	-	* 01/13/09	at TCU	w	62-46	2423
ASSISTS	301	243	* 01-17-09	NEW MEXICO	L	57-61	661
Assists per game	13.7	11.0	* 01/21/09	at UNLV	w	67-62	638
TURNOVERS	380	444	* 1-24-09	at San Diego State	L	36-56	2792
Turnovers per game	17.3	20.2	* 01-28-09	UNIVERSITY OF UTAH	L	55-63	1731
Turnover margin	+2.9	-	* 1/31/09	at Wyoming	w	58-45	3649
Assist/turnover ratio	0.8	0.5	* 02-04-09	AIR FORCE ACADEMY	w	60-41	540
STEALS	211	148	* 02/11/09	at Colorado State University	w	53-51	1136
Steals per game	9.6	6.7	* 02/14/09	TCU	L	55-75	977
BLOCKS	80	55					
Blocks per game	3.6	2.5					
ATTENDANCE	10515	12957					
Home games-Avg/Game	11-956	9-1396					
Neutral site-Avg/Game	-	2-194					

* = Conference game

Score by Periods	1st	2nd	OT	OT2	Totals
Brigham Young	638	675	8	10	1331
Opponents	598	637	8	9	1252

Brigham Young University
Brigham Young Combined Team Statistics (as of Feb 14, 2009)
Conference games

RECORD:	OVERALL	HOME	AWAY	NEUTRAL
ALL GAMES	6-4	2-3	4-1	0-0
CONFERENCE	6-4	2-3	4-1	0-0
NON-CONFERENCE	0-0	0-0	0-0	0-0

##	Player	gp-gs	min	Total		3-Point		F-Throw		Rebounds				pf	dq	a	to	blk	stl	pts	avg		
				fg-fga	fg%	3fg-fga	3fg%	ft-fga	ft%	off	def	tot	avg										
22	NIELSON, Mindy	10-10	318	31.8	39-101	.386	5-21	.238	17-20	.850	14	34	48	4.8	21	0	28	22	4	29	100	10.0	
32	SLADE, Shawnee	10-10	288	28.8	29-97	.299	11-34	.324	6-14	.429	17	23	40	4.0	21	0	13	12	4	9	75	7.5	
54	KING, Cassie	10-10	216	21.6	33-60	.550	0-1	.000	8-11	.727	24	40	64	6.4	24	0	9	19	6	10	74	7.4	
03	FOREMAN, Jazmine	10-10	318	31.8	29-86	.337	8-33	.242	7-11	.636	13	36	49	4.9	23	1	39	27	0	12	73	7.3	
45	MOEAKI, Keilani	10-10	197	19.7	28-63	.444	3-6	.500	8-14	.571	10	18	28	2.8	26	0	5	26	9	7	67	6.7	
23	WOOD, Coriann	10-0	200	20.0	15-59	.254	10-27	.370	12-17	.706	12	39	51	5.1	22	1	10	15	5	11	52	5.2	
35	RILEY, Kristen	10-0	122	12.2	15-41	.366	2-7	.286	6-7	.857	14	19	33	3.3	19	0	8	20	4	6	38	3.8	
14	HOSTETTER, Sarah R	10-0	126	12.6	10-31	.323	4-14	.286	7-8	.875	2	3	5	0.5	11	0	3	6	1	2	31	3.1	
21	BUHLER, Stephanie	9-0	46	5.1	7-20	.350	5-18	.278	3-3	1.000	0	0	0	0.0	2	0	5	2	2	2	22	2.4	
01	JACKSON, Jenteal	10-0	73	7.3	4-21	.190	2-13	.154	1-2	.500	0	2	2	0.2	8	0	6	9	0	5	11	1.1	
13	JUDKINS, Jaime	5-0	34	6.8	2-6	.333	2-5	.400	2-3	.667	1	0	1	0.2	2	0	1	1	0	2	8	1.6	
24	PETERSON, Dani	5-0	30	6.0	2-8	.250	0-1	.000	4-4	1.000	1	3	4	0.8	5	0	0	4	1	1	8	1.6	
55	MARKS, Megan	6-0	28	4.7	1-3	.333	0-0	.000	3-6	.500	1	8	9	1.5	4	0	1	3	1	0	5	0.8	
31	BECK, Marie	1-0	2	2.0	0-1	.000	0-1	.000	0-0	.000	0	0	0	0.0	0	0	0	0	0	0	0	0.0	
34	BELL, Marianne	1-0	2	2.0	0-0	.000	0-0	.000	0-0	.000	0	0	0	0.0	0	0	0	0	0	0	0	0.0	
Team											23	32	55										
Total.....		10	2000		214-597	.358	52-181	.287	84-120	.700	132	257	389	38.9	188	2	128	170	37	96	564	56.4	
Opponents.....		10	2001		176-518	.340	42-150	.280	149-209	.713	121	268	389	38.9	145	-	98	198	30	63	543	54.3	

TEAM STATISTICS	BY	OPP	Date	Opponent	Score	Att.
SCORING	564	543	* 01-10-09	COLORADO STATE UNIVERSITY	w 61-43	672
Points per game	56.4	54.3	* 01/13/09	at TCU	w 62-46	2423
Scoring margin	+2.1	-	* 01-17-09	NEW MEXICO	L 57-61	661
FIELD GOALS-ATT	214-597	176-518	* 01/21/09	at UNLV	w 67-62	638
Field goal pct	.358	.340	* 1-24-09	at San Diego State	L 36-56	2792
3 POINT FG-ATT	52-181	42-150	* 01-28-09	UNIVERSITY OF UTAH	L 55-63	1731
3-point FG pct	.287	.280	* 1/31/09	at Wyoming	w 58-45	3649
3-pt FG made per game	5.2	4.2	* 02-04-09	AIR FORCE ACADEMY	w 60-41	540
FREE THROWS-ATT	84-120	149-209	* 02/11/09	at Colorado State University	w 53-51	1136
Free throw pct	.700	.713	* 02/14/09	TCU	L 55-75	977
F-Throws made per game	8.4	14.9				
REBOUNDS	389	389	* = Conference game			
Rebounds per game	38.9	38.9				
Rebounding margin	+0.0	-				
ASSISTS	128	98				
Assists per game	12.8	9.8				
TURNOVERS	170	198				
Turnovers per game	17.0	19.8				
Turnover margin	+2.8	-				
Assist/turnover ratio	0.8	0.5				
STEALS	96	63				
Steals per game	9.6	6.3				
BLOCKS	37	30				
Blocks per game	3.7	3.0				
ATTENDANCE	4581	10638				
Home games-Avg/Game	5-916	5-2128				
Neutral site-Avg/Game	-	0-0				

Score by Periods	1st	2nd	Totals
Brigham Young	260	304	564
Opponents	247	296	543

Brigham Young University
Brigham Young Overall/Conference Statistics (as of Feb 14, 2009)
All games

SUMMARY	Overall Statistics										Conference Statistics									
	gp-gs	min/g	fg%	3fg%	ft%	r/g	a/g	stl	blk	pts/g	gp-gs	min/g	fg%	3fg%	ft%	r/g	a/g	stl	blk	pts/g
NIELSON, Mindy	22-22	31.8	.386	.224	.778	4.0	3.3	45	13	10.7	10-10	31.8	.386	.238	.850	4.8	2.8	29	4	10.0
SLADE, Shawnee	22-22	29.9	.365	.333	.590	4.2	1.6	25	10	9.9	10-10	28.8	.299	.324	.429	4.0	1.3	9	4	7.5
KING, Cassie	22-22	21.3	.588	.333	.846	5.9	0.5	23	11	7.4	10-10	21.6	.550	.000	.727	6.4	0.9	10	6	7.4
FOREMAN, Jazmine	22-21	30.7	.348	.265	.765	4.0	3.8	32	0	7.2	10-10	31.8	.337	.242	.636	4.9	3.9	12	0	7.3
WOOD, Coriann	22-0	19.0	.369	.397	.690	5.0	0.7	18	7	7.2	10-0	20.0	.254	.370	.706	5.1	1.0	11	5	5.2
MOEAKI, Keilani	22-22	20.6	.429	.250	.636	3.4	0.7	18	18	6.0	10-10	19.7	.444	.500	.571	2.8	0.5	7	9	6.7
RILEY, Kristen	22-0	13.5	.337	.176	.629	3.5	0.6	15	11	3.8	10-0	12.2	.366	.286	.857	3.3	0.8	6	4	3.8
HOSTETTER, Sarah R.	22-0	12.8	.324	.235	.643	0.8	0.8	11	4	3.0	10-0	12.6	.323	.286	.875	0.5	0.3	2	1	3.1
BUHLER, Stephanie	15-0	5.3	.357	.280	1.000	0.1	0.5	5	2	2.0	9-0	5.1	.350	.278	1.000	0.0	0.6	2	2	2.4
PETERSON, Dani	13-0	6.2	.222	.000	.800	1.5	0.0	3	3	1.5	5-0	6.0	.250	.000	1.000	0.8	0.0	1	1	1.6
MARKS, Megan	14-0	4.6	.500	.333	.500	1.4	0.2	2	1	1.4	6-0	4.7	.333	.000	.500	1.5	0.2	0	1	0.8
JACKSON, Jenteal	21-0	7.7	.200	.095	.750	0.6	0.8	7	0	0.9	10-0	7.3	.190	.154	.500	0.2	0.6	5	0	1.1
JUDKINS, Jaime	15-0	4.9	.400	.429	.857	0.2	0.3	3	0	1.1	5-0	6.8	.333	.400	.667	0.2	0.2	2	0	1.6
HALL, Haley	1-1	31.0	.222	.333	1.000	3.0	4.0	4	0	11.0										
BECK, Marie	2-0	2.0	.000	.000	.500	0.5	0.0	0	0	0.5	1-0	2.0	.000	.000	.000	0.0	0.0	0	0	0.0
BELL, Marianne	1-0	2.0	.000	.000	.000	0.0	0.0	0	0	0.0	1-0	2.0	.000	.000	.000	0.0	0.0	0	0	0.0
Totals	22		.382	.279	.709	38.1	13.7	211	80	60.5	10		.358	.287	.700	38.9	12.8	96	37	56.4
Opponent	22		.363	.276	.702	38.6	11.0	148	55	56.9	10		.340	.280	.713	38.9	9.8	63	30	54.3

SCORING	Overall Statistics										Conference Statistics									
	fg-fga	fg%	3fg-fga	3fg%	ft-fga	ft%	pts	pts/g	fg-fga	fg%	3fg-fga	3fg%	ft-fga	ft%	pts	pts/g				
NIELSON, Mindy	93-241	.386	15-67	.224	35-45	.778	236	10.7	39-101	.386	5-21	.238	17-20	.850	100	10.0				
SLADE, Shawnee	85-233	.365	24-72	.333	23-39	.590	217	9.9	29-97	.299	11-34	.324	6-14	.429	75	7.5				
KING, Cassie	70-119	.588	1-3	.333	22-26	.846	163	7.4	33-60	.550	0-1	.000	8-11	.727	74	7.4				
FOREMAN, Jazmine	57-164	.348	18-68	.265	26-34	.765	158	7.2	29-86	.337	8-33	.242	7-11	.636	73	7.3				
WOOD, Coriann	52-141	.369	25-63	.397	29-42	.690	158	7.2	15-59	.254	10-27	.370	12-17	.706	52	5.2				
MOEAKI, Keilani	54-126	.429	4-16	.250	21-33	.636	133	6.0	28-63	.444	3-6	.500	8-14	.571	67	6.7				
RILEY, Kristen	29-86	.337	3-17	.176	22-35	.629	83	3.8	15-41	.366	2-7	.286	6-7	.857	38	3.8				
HOSTETTER, Sarah R.	24-74	.324	8-34	.235	9-14	.643	65	3.0	10-31	.323	4-14	.286	7-8	.875	31	3.1				
BUHLER, Stephanie	10-28	.357	7-25	.280	3-3	1.000	30	2.0	7-20	.350	5-18	.278	3-3	1.000	22	2.4				
PETERSON, Dani	6-27	.222	0-2	.000	8-10	.800	20	1.5	2-8	.250	0-1	.000	4-4	1.000	8	1.6				
MARKS, Megan	8-16	.500	1-3	.333	3-6	.500	20	1.4	1-3	.333	0-0	.000	3-6	.500	5	0.8				
JACKSON, Jenteal	7-35	.200	2-21	.095	3-4	.750	19	0.9	4-21	.190	2-13	.154	1-2	.500	11	1.1				
JUDKINS, Jaime	4-10	.400	3-7	.429	6-7	.857	17	1.1	2-6	.333	2-5	.400	2-3	.667	8	1.6				
HALL, Haley	2-9	.222	1-3	.333	6-6	1.000	11	11.0												
BECK, Marie	0-1	.000	0-1	.000	1-2	.500	1	0.5	0-1	.000	0-1	.000	0-0	.000	0	0.0				
BELL, Marianne	0-0	.000	0-0	.000	0-0	.000	0	0.0	0-0	.000	0-0	.000	0-0	.000	0	0.0				
Totals	501-1310	.382	112-402	.279	217-306	.709	1331	60.5	214-597	.358	52-181	.287	84-120	.700	564	56.4				
Opponent	429-1182	.363	90-326	.276	304-433	.702	1252	56.9	176-518	.340	42-150	.280	149-209	.713	543	54.3				

TOTALS	Overall Statistics										Conference Statistics									
	o-reb	d-reb	total	pf	fo	a	to	a/to	hi pts	o-reb	d-reb	total	pf	fo	a	to	a/to	hi pts		
NIELSON, Mindy	22	65	87	47	0	73	53	1.4	27	14	34	48	21	0	28	22	1.3	22		
SLADE, Shawnee	42	50	92	41	0	35	36	1.0	18	17	23	40	21	0	13	12	1.1	16		
KING, Cassie	44	86	130	49	1	12	37	0.3	19	24	40	64	24	0	9	19	0.5	19		
FOREMAN, Jazmine	19	69	88	56	2	83	59	1.4	19	13	36	49	23	1	39	27	1.4	16		
WOOD, Coriann	31	78	109	56	2	16	31	0.5	15	12	39	51	22	1	10	15	0.7	13		
MOEAKI, Keilani	33	41	74	49	0	15	54	0.3	14	10	18	28	26	0	5	26	0.2	13		
RILEY, Kristen	32	44	76	41	0	14	36	0.4	9	14	19	33	19	0	8	20	0.4	6		
HOSTETTER, Sarah R.	10	8	18	24	0	17	19	0.9	13	2	3	5	11	0	3	6	0.5	9		
BUHLER, Stephanie	0	1	1	5	0	7	8	0.9	9	0	0	0	2	0	5	2	2.5	9		
PETERSON, Dani	9	11	20	11	0	0	5	0.0	4	1	3	4	5	0	4	0.0	4			
MARKS, Megan	3	17	20	14	0	3	11	0.3	8	1	8	9	4	0	1	3	0.3	3		
JACKSON, Jenteal	4	9	13	20	0	17	19	0.9	5	0	2	2	8	0	6	9	0.7	5		
JUDKINS, Jaime	2	1	3	4	0	5	3	1.7	7	1	0	1	2	0	1	1	1.0	3		
HALL, Haley	1	2	3	1	0	4	5	0.8	11											
BECK, Marie	0	1	1	0	0	0	0	0.0	1	0	0	0	0	0	0	0	0.0	0		
BELL, Marianne	0	0	0	0	0	0	0	0.0	0	0	0	0	0	0	0	0	0.0	0		
Totals	303	535	838	418	5	301	380	0.8	81	132	257	389	188	2	128	170	0.8	67		
Opponent	298	552	850	327	-	243	444	0.5	96	121	268	389	145	-	98	198	0.5	75		

Brigham Young University
Brigham Young Extended Season Box Score (as of Feb 14, 2009)
All games

RECORD:	OVERALL	HOME	AWAY	NEUTRAL
ALL GAMES	16-6	7-4	7-2	2-0
CONFERENCE	6-4	2-3	4-1	0-0
NON-CONFERENCE	10-2	5-1	3-1	2-0

##	Player	gp-gs	min	avg	Total		3-Point		F-Throw		Rebounds					a	a/g	to	to/g	a/to	blk	blk/g	stl	stl/g	pts	avg	
					fg-fga	fg%	3fg-fga	3fg%	ft-fa	ft%	off	def	tot	avg	pf												dq
22	NIELSON, Mindy	22-22	699	31.8	93-241	.386	15-67	.224	35-45	.778	22	65	87	4.0	47	0	73	3.32	53	2.41	1.38	13	0.59	45	2.05	236	10.7
32	SLADE, Shawnee	22-22	658	29.9	85-233	.365	24-72	.333	23-39	.590	42	50	92	4.2	41	0	35	1.59	36	1.64	0.97	10	0.45	25	1.14	217	9.9
54	KING, Cassie	22-22	468	21.3	70-119	.588	1-3	.333	22-26	.846	44	86	130	5.9	49	1	12	0.55	37	1.68	0.32	11	0.50	23	1.05	163	7.4
03	FOREMAN, Jazmine	22-21	676	30.7	57-164	.348	18-68	.265	26-34	.765	19	69	88	4.0	56	2	83	3.77	59	2.68	1.41	0	0.00	32	1.45	158	7.2
23	WOOD, Coriann	22-0	419	19.0	52-141	.369	25-63	.397	29-42	.690	31	78	109	5.0	56	2	16	0.73	31	1.41	0.52	7	0.32	18	0.82	158	7.2
45	MOEAKI, Keilani	22-22	453	20.6	54-126	.429	4-16	.250	21-33	.636	33	41	74	3.4	49	0	15	0.68	54	2.45	0.28	18	0.82	18	0.82	133	6.0
35	RILEY, Kristen	22-0	298	13.5	29-86	.337	3-17	.176	22-35	.629	32	44	76	3.5	41	0	14	0.64	36	1.64	0.39	11	0.50	15	0.68	83	3.8
14	HOSTETTER, Sarah R.	22-0	282	12.8	24-74	.324	8-34	.235	9-14	.643	10	8	18	0.8	24	0	17	0.77	19	0.86	0.89	4	0.18	11	0.50	65	3.0
21	BUHLER, Stephanie	15-0	79	5.3	10-28	.357	7-25	.280	3-3	1.000	0	1	1	0.1	5	0	7	0.47	8	0.53	0.88	2	0.13	5	0.33	30	2.0
24	PETERSON, Dani	13-0	80	6.2	6-27	.222	0-2	.000	8-10	.800	9	11	20	1.5	11	0	0	0.00	5	0.38	0.00	3	0.23	3	0.23	20	1.5
55	MARKS, Megan	14-0	65	4.6	8-16	.500	1-3	.333	3-6	.500	3	17	20	1.4	14	0	3	0.21	11	0.79	0.27	1	0.07	2	0.14	20	1.4
01	JACKSON, Jenteal	21-0	162	7.7	7-35	.200	2-21	.095	3-4	.750	4	9	13	0.6	20	0	17	0.81	19	0.90	0.89	0	0.00	7	0.33	19	0.9
13	JUDKINS, Jaime	15-0	74	4.9	4-10	.400	3-7	.429	6-7	.857	2	1	3	0.2	4	0	5	0.33	3	0.20	1.67	0	0.00	3	0.20	17	1.1
31	BECK, Marie	2-0	4	2.0	0-1	.000	0-1	.000	1-2	.500	0	1	1	0.5	0	0	0	0.00	0	0.00	0.00	0	0.00	0	0.00	1	0.5
34	BELL, Marianne	1-0	2	2.0	0-0	.000	0-0	.000	0-0	.000	0	0	0	0.0	0	0	0	0.00	0	0.00	0.00	0	0.00	0	0.00	0	0.0
Total.....		22	4450		501-1310	.382	112-402	.279	217-306	.709	303	535	838	38.1	418	5	301	13.68	380	17.27	0.79	80	3.64	211	9.59	1331	60.5
Opponents.....		22	4451		429-1182	.363	90-326	.276	304-433	.702	298	552	850	38.6	327	-	243	11.05	444	20.18	0.55	55	2.50	148	6.73	1252	56.9

Score by Periods	1st	2nd	OT	OT2	Totals
Brigham Young	638	675	8	10	1331
Opponents	598	637	8	9	1252

Brigham Young University
Brigham Young Game-by-Game Highs (as of Feb 14, 2009)
All games

Opponent	Date	Score	Points	Rebounds	Assists	Steals	Blocked shots
at PSU	11/14/08	64-73	15-SLADE, Shawnee	7-MOEAKI, Keilani	4-NIELSON, Mindy HALL, Haley	4-HALL, Haley	2-MOEAKI, Keilani
at Nevada	11/18/08	81-63	27-NIELSON, Mindy	9-KING, Cassie	5-NIELSON, Mindy	4-NIELSON, Mindy	1-SLADE, Shawnee
OREGON	11-21-08	67-45	17-SLADE, Shawnee	10-KING, Cassie	3-FOREMAN, Jazmin JACKSON, Jenteal	3-SLADE, Shawnee	3-KING, Cassie
UCONN HUSKIES	11-25-08	47-96	14-NIELSON, Mindy	4-SLADE, Shawnee	6-FOREMAN, Jazmin	1-PETERSON, Dani FOREMAN, Jazmin BUHLER, Stephanie NIELSON, Mindy	1-KING, Cassie RILEY, Kristen HOSTETTER, Sara
SOUTHERN UTAH TBIRDS	11-28-08	70-64	18-SLADE, Shawnee	5-RILEY, Kristen WOOD, Coriann SLADE, Shawnee	6-NIELSON, Mindy	3-FOREMAN, Jazmin	2-NIELSON, Mindy RILEY, Kristen
vs WSU	12/5/08	56-50	19-NIELSON, Mindy	6-SLADE, Shawnee	8-FOREMAN, Jazmin	3-NIELSON, Mindy	1-RILEY, Kristen MOEAKI, Keilani
vs Univ. of Southern Californ	12/06/08	65-64	19-FOREMAN, Jazmi	8-WOOD, Coriann	6-FOREMAN, Jazmin	2-HOSTETTER, Sara KING, Cassie	1-SLADE, Shawnee HOSTETTER, Sara MOEAKI, Keilani
WEBER STATE UNIVERSIT	12-10-08	76-69	16-SLADE, Shawnee	7-KING, Cassie	7-NIELSON, Mindy	4-FOREMAN, Jazmin	2-NIELSON, Mindy
UTAH STATE AGGIES	12-13-08	61-60	14-KING, Cassie	8-MOEAKI, Keilani SLADE, Shawnee FOREMAN, Jazmin	7-NIELSON, Mindy	3-FOREMAN, Jazmin	1-MOEAKI, Keilani RILEY, Kristen SLADE, Shawnee NIELSON, Mindy
at Long Beach State	12/20/08	66-49	14-SLADE, Shawnee	7-KING, Cassie	3-SLADE, Shawnee JACKSON, Jenteal	3-SLADE, Shawnee	3-NIELSON, Mindy
ARKANSAS STATE UNIVE	12/30/08	49-39	13-NIELSON, Mindy	9-KING, Cassie	4-SLADE, Shawnee	3-KING, Cassie	2-MOEAKI, Keilani
at Portland	1/3/09	65-37	9-SLADE, Shawnee	7-RILEY, Kristen	5-NIELSON, Mindy	2-RILEY, Kristen BUHLER, Stephanie FOREMAN, Jazmin	1-MOEAKI, Keilani RILEY, Kristen
COLORADO STATE UNIVE	01-10-09	61-43	16-SLADE, Shawnee	8-KING, Cassie	5-SLADE, Shawnee	2-WOOD, Coriann NIELSON, Mindy SLADE, Shawnee	2-MOEAKI, Keilani
at TCU	01/13/09	62-46	22-NIELSON, Mindy	9-FOREMAN, Jazmin	6-FOREMAN, Jazmin	2-NIELSON, Mindy MOEAKI, Keilani	1-MOEAKI, Keilani
NEW MEXICO	01-17-09	57-61	16-FOREMAN, Jazmi	8-NIELSON, Mindy	7-FOREMAN, Jazmin	2-NIELSON, Mindy	2-KING, Cassie
at UNLV	01/21/09	67-62	21-NIELSON, Mindy	13-KING, Cassie	4-KING, Cassie NIELSON, Mindy	6-NIELSON, Mindy	2-WOOD, Coriann
at San Diego State	1-24-09	36-56	9-HOSTETTER, Sara	8-RILEY, Kristen	2-FOREMAN, Jazmin	6-NIELSON, Mindy	3-RILEY, Kristen
UNIVERSITY OF UTAH	01-28-09	55-63	13-WOOD, Coriann	6-FOREMAN, Jazmin WOOD, Coriann	4-FOREMAN, Jazmin	3-NIELSON, Mindy	1-SLADE, Shawnee NIELSON, Mindy
at Wyoming	1/31/09	58-45	13-MOEAKI, Keilani	6-FOREMAN, Jazmin WOOD, Coriann RILEY, Kristen	2-NIELSON, Mindy FOREMAN, Jazmin	4-NIELSON, Mindy	1-KING, Cassie
AIR FORCE ACADEMY	02-04-09	60-41	10-FOREMAN, Jazmi	9-WOOD, Coriann	5-FOREMAN, Jazmin	3-NIELSON, Mindy	2-MOEAKI, Keilani
at Colorado State University	02/11/09	53-51	15-KING, Cassie	8-KING, Cassie SLADE, Shawnee	4-FOREMAN, Jazmin	2-FOREMAN, Jazmin WOOD, Coriann	2-KING, Cassie
TCU	02/14/09	55-75	9-BUHLER, Stephani	9-FOREMAN, Jazmin	7-NIELSON, Mindy	3-KING, Cassie	2-WOOD, Coriann

Brigham Young University
Brigham Young Points-Rebounds-Assists (as of Feb 14, 2009)
All games

Opponent	Date	Score		01	03	13	14	21	22	23
				JACKSON,JE	FOREMAN,JA	JUDKINS,JA	HOSTETTER,	BUHLER,STE	NIELSON,MI	WOOD,CORIA
at PSU	11/14/08	64-73	L	DNP	12-2-3	0-0-0	2-0-1	0-0-0	9-2-4	2-2-0
at Nevada	11/18/08	81-63	w	0-2-0	10-3-3	0-0-0	0-1-1	0-0-0	27-3-5	10-5-1
OREGON	11-21-08	67-45	w	2-3-3	0-3-3	2-1-1	13-1-2	0-0-1	7-4-2	6-4-2
UCONN HUSKIES	11-25-08	47-96	L	0-0-1	6-3-6	0-0-1	0-2-0	0-0-1	14-1-0	9-3-0
SOUTHERN UTAH TBIRDS	11-28-08	70-64	w	2-0-0	8-3-3	0-0-0	0-1-2	DNP	7-3-6	10-5-1
vs WSU	12/5/08	56-50	w	0-0-0	2-4-8	DNP	1-1-0	DNP	19-4-1	5-5-0
vs Univ. of Southern Ca	12/06/08	65-64	w	0-0-1	19-2-6	DNP	0-0-1	DNP	4-1-4	14-8-1
WEBER STATE UNIVERSIT	12-10-08	76-69	w	4-1-1	8-4-6	0-0-0	2-2-1	DNP	11-2-7	15-5-0
UTAH STATE AGGIES	12-13-08	61-60	w	0-0-0	8-8-2	0-0-0	0-1-0	DNP	7-7-7	13-6-0
at Long Beach State	12/20/08	66-49	w	0-3-3	0-1-0	0-1-1	6-1-1	2-1-0	12-4-1	10-5-0
ARKANSAS STATE UNIVE	12/30/08	49-39	w	0-1-0	4-5-2	0-0-0	5-1-1	DNP	13-5-3	7-6-0
at Portland	1/3/09	65-37	w	0-1-2	8-1-2	7-0-1	5-2-4	6-0-0	6-3-5	5-4-1
COLORADO STATE UNIVE	01-10-09	61-43	w	0-0-1	7-3-2	2-0-0	2-1-1	0-0-0	3-7-3	9-3-2
at TCU	01/13/09	62-46	w	0-0-0	9-9-6	DNP	0-1-0	6-0-0	22-6-4	3-4-1
NEW MEXICO	01-17-09	57-61	L	5-0-0	16-5-7	DNP	0-1-1	DNP	8-8-2	3-2-1
at UNLV	01/21/09	67-62	w	0-0-0	9-2-3	DNP	0-0-0	0-0-0	21-6-4	0-7-2
at San Diego State	1-24-09	36-56	L	1-0-0	0-1-2	0-0-1	9-0-0	3-0-1	6-3-0	0-3-1
UNIVERSITY OF UTAH	01-28-09	55-63	L	2-0-0	3-6-4	DNP	3-0-0	0-0-0	9-5-2	13-6-3
at Wyoming	1/31/09	58-45	w	0-1-1	7-6-2	0-0-0	7-0-1	2-0-0	9-5-2	6-6-0
AIR FORCE ACADEMY	02-04-09	60-41	w	0-1-2	10-3-5	3-1-0	3-1-0	0-0-3	8-4-3	7-9-0
at Colorado State Unive	02/11/09	53-51	w	0-0-0	4-5-4	DNP	4-1-0	2-0-0	8-2-1	8-6-0
TCU	02/14/09	55-75	L	3-0-2	8-9-4	3-0-0	3-0-0	9-0-1	6-2-7	3-5-0

Opponent	Date	Score		24	31	32	33	34	35	45
				PETERSON,D	BECK,MARIE	SLADE,SHAW	HALL,HALEY	BELL,MARIA	RILEY,KRIS	MOEAKI,KEI
at PSU	11/14/08	64-73	L	0-0-0	DNP	15-6-0	11-3-4	DNP	4-3-0	6-7-0
at Nevada	11/18/08	81-63	w	0-0-0	DNP	7-6-2	DNP	DNP	2-3-0	14-2-0
OREGON	11-21-08	67-45	w	4-4-0	DNP	17-2-2	DNP	DNP	4-5-2	4-2-0
UCONN HUSKIES	11-25-08	47-96	L	0-0-0	DNP	3-4-2	DNP	DNP	0-2-0	10-1-0
SOUTHERN UTAH TBIRDS	11-28-08	70-64	w	0-2-0	DNP	18-5-3	DNP	DNP	9-5-1	0-2-1
vs WSU	12/5/08	56-50	w	DNP	DNP	15-6-3	DNP	DNP	7-2-2	3-5-1
vs Univ. of Southern Ca	12/06/08	65-64	w	DNP	DNP	13-7-1	DNP	DNP	1-2-1	0-3-3
WEBER STATE UNIVERSIT	12-10-08	76-69	w	0-2-0	DNP	16-1-2	DNP	DNP	1-3-0	7-5-0
UTAH STATE AGGIES	12-13-08	61-60	w	DNP	DNP	8-8-0	DNP	DNP	3-2-0	8-8-1
at Long Beach State	12/20/08	66-49	w	4-3-0	1-1-0	14-2-3	DNP	DNP	4-4-0	7-4-2
ARKANSAS STATE UNIVE	12/30/08	49-39	w	DNP	DNP	7-1-4	DNP	DNP	6-5-0	5-3-0
at Portland	1/3/09	65-37	w	4-5-0	DNP	9-4-0	DNP	DNP	4-7-0	2-4-2
COLORADO STATE UNIVE	01-10-09	61-43	w	2-0-0	DNP	16-7-5	DNP	DNP	4-0-2	10-5-1
at TCU	01/13/09	62-46	w	DNP	DNP	9-8-0	DNP	DNP	0-0-2	5-4-1
NEW MEXICO	01-17-09	57-61	L	DNP	DNP	6-2-1	DNP	DNP	4-1-0	5-2-1
at UNLV	01/21/09	67-62	w	DNP	DNP	8-3-0	DNP	DNP	4-5-0	6-2-0
at San Diego State	1-24-09	36-56	L	4-1-0	DNP	3-4-0	DNP	DNP	6-8-1	4-0-1
UNIVERSITY OF UTAH	01-28-09	55-63	L	DNP	DNP	6-3-1	DNP	DNP	5-3-2	12-4-0
at Wyoming	1/31/09	58-45	w	0-1-0	DNP	6-2-1	DNP	DNP	4-6-0	13-5-0
AIR FORCE ACADEMY	02-04-09	60-41	w	2-2-0	0-0-0	8-1-2	DNP	0-0-0	5-2-0	7-3-1
at Colorado State Unive	02/11/09	53-51	w	DNP	DNP	8-8-3	DNP	DNP	0-2-0	4-1-0
TCU	02/14/09	55-75	L	0-0-0	DNP	5-2-0	DNP	DNP	6-6-1	1-2-0

Brigham Young University
Brigham Young Points-Rebounds-Assists (as of Feb 14, 2009)
All games

Opponent	Date	Score		54	55
				KING,CASSI	MARKS,MEGA
at PSU	11/14/08	64-73	L	3-2-0	0-0-0
at Nevada	11/18/08	81-63	w	11-9-0	0-0-0
OREGON	11-21-08	67-45	w	8-10-0	0-2-0
UCONN HUSKIES	11-25-08	47-96	L	3-3-0	2-1-0
SOUTHERN UTAH TBIRDS	11-28-08	70-64	w	8-3-0	8-0-1
vs WSU	12/5/08	56-50	w	4-2-0	DNP
vs Univ. of Southern Ca	12/06/08	65-64	w	14-6-1	DNP
WEBER STATE UNIVERSIT	12-10-08	76-69	w	12-7-1	DNP
UTAH STATE AGGIES	12-13-08	61-60	w	14-4-0	0-0-0
at Long Beach State	12/20/08	66-49	w	6-7-0	0-2-0
ARKANSAS STATE UNIVE	12/30/08	49-39	w	2-9-0	DNP
at Portland	1/3/09	65-37	w	4-4-1	5-6-1
COLORADO STATE UNIVE	01-10-09	61-43	w	6-8-1	0-1-0
at TCU	01/13/09	62-46	w	8-6-1	DNP
NEW MEXICO	01-17-09	57-61	L	10-7-1	0-1-0
at UNLV	01/21/09	67-62	w	19-13-4	DNP
at San Diego State	1-24-09	36-56	L	0-3-0	0-3-1
UNIVERSITY OF UTAH	01-28-09	55-63	L	2-4-0	DNP
at Wyoming	1/31/09	58-45	w	2-4-0	2-0-0
AIR FORCE ACADEMY	02-04-09	60-41	w	4-3-1	3-4-0
at Colorado State Unive	02/11/09	53-51	w	15-8-1	DNP
TCU	02/14/09	55-75	L	8-8-0	0-0-0

Brigham Young University
Brigham Young Category Leaders (as of Feb 14, 2009)
All games

Points	G	Pts	Pts/G	Scoring Average	G	Pts	Avg/G
NIELSON, Mindy	22	236	10.7	HALL, Haley	1	11	11.0
SLADE, Shawnee	22	217	9.9	NIELSON, Mindy	22	236	10.7
KING, Cassie	22	163	7.4	SLADE, Shawnee	22	217	9.9
FOREMAN, Jazmine	22	158	7.2	KING, Cassie	22	163	7.4
WOOD, Coriann	22	158	7.2	FOREMAN, Jazmine	22	158	7.2
MOEAKI, Keilani	22	133	6.0	WOOD, Coriann	22	158	7.2
RILEY, Kristen	22	83	3.8	MOEAKI, Keilani	22	133	6.0
HOSTETTER, Sarah R.	22	65	3.0	RILEY, Kristen	22	83	3.8
BUHLER, Stephanie	15	30	2.0	HOSTETTER, Sarah R.	22	65	3.0
PETERSON, Dani	13	20	1.5	BUHLER, Stephanie	15	30	2.0
MARKS, Megan	14	20	1.4	PETERSON, Dani	13	20	1.5
JACKSON, Jenteal	21	19	0.9	MARKS, Megan	14	20	1.4

FG Percentage	FG	Att	Pct	Field Goal Attempts	G	Att	Att/G
KING, Cassie	70	119	.588	NIELSON, Mindy	22	241	11.0
MARKS, Megan	8	16	.500	SLADE, Shawnee	22	233	10.6
MOEAKI, Keilani	54	126	.429	FOREMAN, Jazmine	22	164	7.5
JUDKINS, Jaime	4	10	.400	WOOD, Coriann	22	141	6.4
NIELSON, Mindy	93	241	.386	MOEAKI, Keilani	22	126	5.7
WOOD, Coriann	52	141	.369	Field Goals Made	G	Made	Made/G
SLADE, Shawnee	85	233	.365	NIELSON, Mindy	22	93	4.2
BUHLER, Stephanie	10	28	.357	SLADE, Shawnee	22	85	3.9
FOREMAN, Jazmine	57	164	.348	KING, Cassie	22	70	3.2
RILEY, Kristen	29	86	.337	FOREMAN, Jazmine	22	57	2.6
HOSTETTER, Sarah R.	24	74	.324	MOEAKI, Keilani	22	54	2.5
PETERSON, Dani	6	27	.222				
HALL, Haley	2	9	.222				

3-Point Percentage	3FG	Att	Pct	3-Point FG Attempts	G	Att	Att/G
JUDKINS, Jaime	3	7	.429	SLADE, Shawnee	22	72	3.3
WOOD, Coriann	25	63	.397	FOREMAN, Jazmine	22	68	3.1
KING, Cassie	1	3	.333	NIELSON, Mindy	22	67	3.0
MARKS, Megan	1	3	.333	WOOD, Coriann	22	63	2.9
HALL, Haley	1	3	.333	HOSTETTER, Sarah R.	22	34	1.5
SLADE, Shawnee	24	72	.333	3-Point FG Made	G	Made	Made/G
BUHLER, Stephanie	7	25	.280	WOOD, Coriann	22	25	1.1
FOREMAN, Jazmine	18	68	.265	SLADE, Shawnee	22	24	1.1
MOEAKI, Keilani	4	16	.250	FOREMAN, Jazmine	22	18	0.8
HOSTETTER, Sarah R.	8	34	.235	NIELSON, Mindy	22	15	0.7
NIELSON, Mindy	15	67	.224	HOSTETTER, Sarah R.	22	8	0.4
RILEY, Kristen	3	17	.176				

Free Throw Percent	FG	Att	Pct	Free Throw Attempts	G	Att	Att/G
HALL, Haley	6	6	1.000	NIELSON, Mindy	22	45	2.0
BUHLER, Stephanie	3	3	1.000	WOOD, Coriann	22	42	1.9
JUDKINS, Jaime	6	7	.857	SLADE, Shawnee	22	39	1.8
KING, Cassie	22	26	.846	RILEY, Kristen	22	35	1.6
PETERSON, Dani	8	10	.800	FOREMAN, Jazmine	22	34	1.5
NIELSON, Mindy	35	45	.778	Free Throws Made	G	Made	Made/G
FOREMAN, Jazmine	26	34	.765	NIELSON, Mindy	22	35	1.6
JACKSON, Jenteal	3	4	.750	WOOD, Coriann	22	29	1.3
WOOD, Coriann	29	42	.690	FOREMAN, Jazmine	22	26	1.2
HOSTETTER, Sarah R.	9	14	.643	SLADE, Shawnee	22	23	1.0
MOEAKI, Keilani	21	33	.636	KING, Cassie	22	22	1.0
RILEY, Kristen	22	35	.629	RILEY, Kristen	22	22	1.0

Brigham Young University
Brigham Young Category Leaders (as of Feb 14, 2009)
All games

Rebounds	G	Reb	Reb/G
KING, Cassie	22	130	5.9
WOOD, Coriann	22	109	5.0
SLADE, Shawnee	22	92	4.2
FOREMAN, Jazmine	22	88	4.0
NIELSON, Mindy	22	87	4.0

Rebound Average	G	Reb	Avg/G
KING, Cassie	22	130	5.9
WOOD, Coriann	22	109	5.0
SLADE, Shawnee	22	92	4.2
FOREMAN, Jazmine	22	88	4.0
NIELSON, Mindy	22	87	4.0

Offensive Rebounds	G	No.	Avg/G
KING, Cassie	22	44	2.0
SLADE, Shawnee	22	42	1.9
MOEAKI, Keilani	22	33	1.5
RILEY, Kristen	22	32	1.5
WOOD, Coriann	22	31	1.4

Defensive Rebounds	G	No.	Avg/G
KING, Cassie	22	86	3.9
WOOD, Coriann	22	78	3.5
FOREMAN, Jazmine	22	69	3.1
NIELSON, Mindy	22	65	3.0
SLADE, Shawnee	22	50	2.3

Fouls	G	No.	Per/G
FOREMAN, Jazmine	22	56	2.5
WOOD, Coriann	22	56	2.5
KING, Cassie	22	49	2.2
MOEAKI, Keilani	22	49	2.2
NIELSON, Mindy	22	47	2.1

Foulsouts	G	No.
FOREMAN, Jazmine	22	2
WOOD, Coriann	22	2
KING, Cassie	22	1

Assists	G	No.	Ast/G
FOREMAN, Jazmine	22	83	3.8
NIELSON, Mindy	22	73	3.3
SLADE, Shawnee	22	35	1.6
HOSTETTER, Sarah R.	22	17	0.8
JACKSON, Jenteal	21	17	0.8

Steals	G	No.	Stl/G
NIELSON, Mindy	22	45	2.0
FOREMAN, Jazmine	22	32	1.5
SLADE, Shawnee	22	25	1.1
KING, Cassie	22	23	1.0
MOEAKI, Keilani	22	18	0.8
WOOD, Coriann	22	18	0.8

Blocked Shots	G	No.	Blk/G
MOEAKI, Keilani	22	18	0.8
NIELSON, Mindy	22	13	0.6
KING, Cassie	22	11	0.5
RILEY, Kristen	22	11	0.5
SLADE, Shawnee	22	10	0.5

Minutes	G	No.	Min/G
NIELSON, Mindy	22	699	31.8
FOREMAN, Jazmine	22	676	30.7
SLADE, Shawnee	22	658	29.9
KING, Cassie	22	468	21.3
MOEAKI, Keilani	22	453	20.6

Turnovers	G	No.	TO/G
FOREMAN, Jazmine	22	59	2.7
MOEAKI, Keilani	22	54	2.5
NIELSON, Mindy	22	53	2.4
KING, Cassie	22	37	1.7
RILEY, Kristen	22	36	1.6
SLADE, Shawnee	22	36	1.6

Brigham Young University
Brigham Young Team Game-by-Game (as of Feb 14, 2009)
All games

TEAM STATISTICS

Opponent	Date	Score		Total		3-Pointers		Free throws		Rebounds				pf	a	t/o	blk	stl	pts	avg
				fg-fga	pct	3fg-fga	pct	ft-fa	pct	off	def	tot	avg							
at PSU	11/14/08	64-73	L	22-62	.355	6-19	.316	14-20	.700	12	19	31	31.0	23	12	15	3	12	64	64.0
at Nevada	11/18/08	81-63	W	28-60	.467	8-17	.471	17-18	.944	15	23	38	34.5	19	12	17	1	8	81	72.5
OREGON	11-21-08	67-45	W	29-67	.433	5-16	.313	4-9	.444	13	30	43	37.3	25	18	15	7	9	67	70.7
UCONN HUSKIES	11-25-08	47-96	L	17-60	.283	6-19	.316	7-8	.875	11	16	27	34.8	20	11	20	3	4	47	64.8
SOUTHERN UTAH TBIRD	11-28-08	70-64	W	28-67	.418	3-23	.130	11-18	.611	17	14	31	34.0	21	18	12	4	14	70	65.8
vs WSU	12/5/08	56-50	W	20-40	.500	5-15	.333	11-16	.688	10	21	31	33.5	21	15	32	2	10	56	64.2
vs Univ. of Southern Califor	12/06/08	65-64	W	24-49	.490	8-21	.381	9-15	.600	7	26	33	33.4	15	19	21	3	6	65	64.3
WEBER STATE UNIVERSI	12-10-08	76-69	W	29-59	.492	3-9	.333	15-17	.882	11	21	32	33.2	15	18	16	5	12	76	65.8
UTAH STATE AGGIES	12-13-08	61-60	Wot	20-71	.282	1-30	.033	20-25	.800	27	28	55	35.7	22	10	16	4	8	61	65.2
at Long Beach State	12/20/08	66-49	W	26-66	.394	6-22	.273	8-11	.727	21	23	44	36.5	17	11	15	6	13	66	65.3
ARKANSAS STATE UNIVE	12/30/08	49-39	W	18-53	.340	3-13	.231	10-16	.625	9	29	38	36.6	16	10	12	3	8	49	63.8
at Portland	1/3/09	65-37	W	26-59	.441	6-17	.353	7-13	.538	18	28	46	37.4	16	19	19	2	11	65	63.9
COLORADO STATE UNIV	01-10-09	61-43	W	22-57	.386	6-18	.333	11-14	.786	8	32	40	37.6	18	18	16	4	10	61	63.7
at TCU	01/13/09	62-46	W	25-62	.403	5-24	.208	7-10	.700	15	28	43	38.0	17	15	18	1	9	62	63.6
NEW MEXICO	01-17-09	57-61	L	25-60	.417	3-9	.333	4-9	.444	10	26	36	37.9	25	14	18	4	4	57	63.1
at UNLV	01/21/09	67-62	W	26-71	.366	5-19	.263	10-12	.833	15	24	39	37.9	18	13	9	5	9	67	63.4
at San Diego State	1-24-09	36-56	L	12-51	.235	1-10	.100	11-14	.786	10	23	33	37.6	16	8	24	6	13	36	61.8
UNIVERSITY OF UTAH	01-28-09	55-63	L	20-61	.328	5-16	.313	10-13	.769	15	21	36	37.6	19	12	16	2	12	55	61.4
at Wyoming	1/31/09	58-45	W	22-53	.415	5-11	.455	9-12	.750	11	29	40	37.7	21	7	20	1	11	58	61.2
AIR FORCE ACADEMY	02-04-09	60-41	W	23-61	.377	8-20	.400	6-11	.545	12	29	41	37.8	18	17	15	7	11	60	61.2
at Colorado State Universit	02/11/09	53-51	W	20-61	.328	5-20	.250	8-14	.571	18	24	42	38.0	18	9	15	3	8	53	60.8
TCU	02/14/09	55-75	L	19-60	.317	9-34	.265	8-11	.727	18	21	39	38.1	18	15	19	4	9	55	60.5
Brigham Young		1331		501-1310	.382	112-402	.279	217-306	.709	303	535	838	38.1	418	301	380	80	211	1331	60.5
Opponents		1252		429-1182	.363	90-326	.276	304-433	.702	298	552	850	38.6	327	243	444	55	148	1252	56.9

Games played: 22
Points/game: 60.5
FG Pct: 38.2
3FG Pct: 27.9
FT Pct: 70.9

Rebounds/game: 38.1
Assists/game: 13.7
Turnovers/game: 17.3
Assist/turnover ratio: 0.8
Steals/game: 9.6
Blocks/game: 3.6

Brigham Young University
Brigham Young Team Game-by-Game Comparison (as of Feb 14, 2009)
All games

Opponent	1st	2nd	Score	Mar	Total FG	FG Pct	3-Pointers	3FG Pct	Free Throws	FT Pct	Rebounds	Assist	T/Over	Block	Steal	Fouls
PSU	29/36	35/37	64-73	(9)	22-62/26-57	.355/.456	6-19/5-16	.316/.313	14-20/16-22	.700/.727	31/44 (13)	12/17	15/23	3/1	12/5	23/14
Nevada	48/31	33/32	81-63	+18	28-60/24-64	.467/.375	8-17/2-14	.471/.143	17-18/13-19	.944/.684	38/38 -	12/12	17/17	1/2	8/8	19/13
OREGON	38/24	29/21	67-45	+22	29-67/13-52	.433/.250	5-16/2-14	.313/.143	4-9/17-26	.444/.654	43/41 +2	18/3	15/21	7/1	9/4	25/14
UCONN HUSKIES	29/47	18/49	47-96	(49)	17-60/38-63	.283/.603	6-19/12-23	.316/.522	7-8/8-12	.875/.667	27/46 (19)	11/26	20/17	3/6	4/5	20/16
SOUTHERN UTAH TBIRDS	31/35	39/29	70-64	+6	28-67/23-49	.418/.469	3-23/3-10	.130/.300	11-18/15-23	.611/.652	31/42 (11)	18/11	12/25	4/1	14/3	21/17
WSU	29/29	27/21	56-50	+6	20-40/17-50	.500/.340	5-15/3-13	.333/.231	11-16/13-19	.688/.684	31/30 +1	15/11	32/26	2/0	10/12	21/16
Univ. of Southern California	28/34	37/30	65-64	+1	24-49/24-62	.490/.387	8-21/6-18	.381/.333	9-15/10-14	.600/.714	33/36 (3)	19/15	21/19	3/1	6/6	15/13
WEBER STATE UNIVERSITY	32/33	44/36	76-69	+7	29-59/24-58	.492/.414	3-9/7-21	.333/.333	15-17/14-17	.882/.824	32/35 (3)	18/15	16/20	5/0	12/6	15/15
UTAH STATE AGGIES	24/22	19/21	61-60	+1	20-71/19-56	.282/.339	1-30/3-16	.033/.188	20-25/19-29	.800/.655	55/41 +14	10/8	16/18	4/2	8/9	22/19
Long Beach State	38/17	28/32	66-49	+17	26-66/17-51	.394/.333	6-22/3-13	.273/.231	8-11/12-16	.727/.750	44/33 +11	11/8	15/20	6/4	13/9	17/16
ARKANSAS STATE UNIVERSIT	22/23	27/16	49-39	+10	18-53/15-53	.340/.283	3-13/2-9	.231/.222	10-16/7-12	.625/.583	38/44 (6)	10/10	12/19	3/1	8/8	16/17
Portland	30/20	35/17	65-37	+28	26-59/13-49	.441/.265	6-17/0-9	.353/.000	7-13/11-15	.538/.733	46/31 +15	19/9	19/21	2/6	11/10	16/12
COLORADO STATE UNIVERSI	23/20	38/23	61-43	+18	22-57/13-50	.386/.260	6-18/5-18	.333/.278	11-14/12-17	.786/.706	40/36 +4	18/7	16/23	4/1	10/3	18/14
TCU	28/24	34/22	62-46	+16	25-62/11-49	.403/.224	5-24/3-16	.208/.188	7-10/21-27	.700/.778	43/35 +8	15/7	18/20	1/2	9/7	17/12
NEW MEXICO	29/28	28/33	57-61	(4)	25-60/19-50	.417/.380	3-9/2-8	.333/.250	4-9/21-31	.444/.677	36/38 (2)	14/8	18/15	4/4	4/8	25/13
UNLV	28/34	39/28	67-62	+5	26-71/23-54	.366/.426	5-19/4-13	.263/.308	10-12/12-19	.833/.632	39/44 (5)	13/11	9/20	5/2	9/2	18/12
San Diego State	15/27	21/29	36-56	(20)	12-51/23-55	.235/.418	1-10/4-14	.100/.286	11-14/6-13	.786/.462	33/43 (10)	8/15	24/24	6/6	13/10	16/18
UNIVERSITY OF UTAH	27/27	28/36	55-63	(8)	20-61/21-54	.328/.389	5-16/5-19	.313/.263	10-13/16-19	.769/.842	36/40 (4)	12/14	16/17	2/4	12/5	19/16
Wyoming	23/20	35/25	58-45	+13	22-53/13-49	.415/.265	5-11/3-16	.455/.188	9-12/16-21	.750/.762	40/32 +8	7/8	20/19	1/6	11/7	21/14
AIR FORCE ACADEMY	41/15	19/26	60-41	+19	23-61/15-51	.377/.294	8-20/3-14	.400/.214	6-11/8-17	.545/.471	41/42 (1)	17/7	15/23	7/1	11/6	18/15
Colorado State University	17/20	36/31	53-51	+2	20-61/16-47	.328/.340	5-20/4-13	.250/.308	8-14/15-19	.571/.789	42/35 +7	9/8	15/21	3/3	8/5	18/17
TCU	29/32	26/43	55-75	(20)	19-60/22-59	.317/.373	9-34/9-19	.265/.474	8-11/22-26	.727/.846	39/44 (5)	15/13	19/16	4/1	9/10	18/14

Note: Game totals are displayed in the format TEAM/OPPONENT for each category