



# BYU Women's Basketball

Athletic Communications • 30 Smith Fieldhouse • Provo, Utah • 84602  
 801-422-8948 office • 801-422-0633 fax • website: [www.byucougars.com](http://www.byucougars.com)

Women's Basketball Contact: Norma Collett • 801-422-4908 office • 801-372-0989 cell • email: [norma\\_collett@byu.edu](mailto:norma_collett@byu.edu)

## BYU Women's Basketball Information (Jan. 21, 2009)

Game Notes - Game #17: BYU (12-4, 3-1) vs. San Diego State (12-5, 4-1)

### 2009-10 SCHEDULE/Results

Date	Opponent	Time/Results
Nov. 6	Westminster, Exh.	W 85-58
Nov. 7	Chadron St., Exh.	W 107-55
Nov. 13	Utah Valley Univ.	W 73-51
Nov. 18	@ Washington	L 66-67
Nov. 20	@ Montana State	W 79-54
Nov. 24	@ SUU	W 72-39
Nov. 27	Kansas State	L 62-65
Dec. 4	vs. San Fran (@Hukilau Inv.)	W 72-60
Dec. 5	vs. Hawaii (@ Hukilau Inv.)	W 81-44
Dec. 9	@ Weber State	L 61-62 (2ot)
Dec. 12	@ CS Fullerton	W 75-72
Dec. 19	@ Utah State	W 61-48
Dec. 31	Portland	W 69-57
Jan. 2	Nevada	W 61-41
Jan. 6	@ UNLV*	W 71-61
Jan. 13	Air Force Academy* (BYU TV)	W 77-46
Jan. 16	@ CSU*	W 67-58
Jan. 19	@ Wyoming* (The Mtn.)	L 54-69
Jan. 23	SDSU*	2 p.m.
Jan. 27	UNM* (BYU TV)	7 p.m.
Jan. 30	@ Utah*	3 p.m.
Feb. 3	@ TCU*	6:30 p.m.
Feb. 6	UNLV* (BYU TV)	2 p.m.
Feb. 13	@ Air Force Academy*	2 p.m.
Feb. 17	CSU* (BYU TV)	7 p.m.
Feb. 20	Wyoming* (BYU TV)	2 p.m.
Feb. 24	@ SDSU*	7 p.m.
Feb. 27	@ UNM*(CBS C)	4 p.m.
Mar. 3	Utah* (BYU TV)	7 p.m.
Mar. 6	TCU*	2 p.m.
Mar. 10-13	@ MWC Tournament	TBA
Mar. 20-23	@ NCAA 1st/2nd Round	TBA
Mar. 27-30	@ NCAA Regionals	TBA

### SAN DIEGO STATE COMES TO PROVO SATURDAY

#### GAME #17 INFORMATION - vs. San Diego State 01/23/10

Tip Off: 2 p.m. MST  
 Site: Marriott Center  
 Live Internet Audio: BYU Radio (Jay Mosen & Kristen Kozlowski)  
 Live Stats: [www.byucougars.com](http://www.byucougars.com)  
 The Series: BYU leads 25-12  
 Last Meeting: San Diego State won 59-47 in Provo, Utah (Feb. 25, 2009)

### BACK HOME TO HOST SAN DIEGO STATE -

With a 3-2 record in the MWC, the BYU women's basketball team is tied for second place in the current standings. The team returns home to continue MWC action.

The Cougars (12-4, 3-1) host league leading San Diego State (12-5, 4-1) on Sat. Jan. 23 at 2 p.m.

#### BYU Probable Starters

No.	Name	Pos.	Ht.	Yr.	PPG	RPG
03	Jazmine Foreman	G	5-5	Jr	10.1	3.3
22	Mindy Bonham (Nielsen)	G	5-10	Jr	11.4	3.9
33	Haley Hall	G	5-4	Jr	8.1	3.3
45	Keilani Moeaki	F	6-2	Jr	5.2	2.6
35	Kristen Riley	C	6-3	So	8.5	5.1

#### Off the Bench

No.	Name	Pos.	Ht.	Yr.	PPG	RPG
23	Coriann Wood	F	6-1	Jr	10.4	5.9
10	Alexis Kaufusi	F	6-1	Fr	7.4	5.4
32	Dani Peterson	F	6-1	So	3.5	2.3
13	Jaime Judkins	G	5-6	Sr	1.8	1.0
21	Stephanie Buhler-Bates	F	6-1	So	0.8	0.6
55	Megan Leach	F	6-3	So	0.3	1.5
31	Marie Beck	G	5-8	Jr	0.6	0.5

Home Games played at Marriott Center  
 All Times Local to Site  
 \*Indicates MWC Games

### 2009-10 BASKETBALL STAFF

Head Coach: Jeff Judkins (Utah '78)  
 Office Phone: 801-422-8035  
 Best time to call: 9-10 a.m.daily  
 Assistant Coach: Alli Bills (Utah, '98)  
 Office Phone: 801-422-1548  
 Assistant Coach: Stacy Jensen (BYU '02)  
 Office Phone: 801-422-7682  
 Assistant Coach: Chris Boettcher (BYU '94)  
 Office Phone: 801-422-8155



### BYU 2009-10 Quick Facts

#### University Information

Location: ..... Provo, Utah  
 Founded: ..... Oct. 15, 1875  
 Elevation: ..... 4,553 feet  
 Enrollment: ..... 33,278  
 Nickname: ..... Cougars  
 Mascot ..... Cosmo  
 Colors: ..... Dark Blue and White

#### Team Information

2009-10 Record: 12-4, 3-1  
 Coach Judkins Record: (11 / 25 / 09) 169-93  
 2008-09 Overall Record: 18-11  
 2008-09 Conf. Record: 8-8 / 5th (t)  
 Letterwinners R/L: 12 / 3  
 Starters R/L: 3 / 2  
 Newcomers: 3

#### Roster Breakdown

##### Letterwinners Returning: (12)

Jaime Judkins: 5-6 Sr. G (0.9 ppg; 0.3 rpg)  
 Marie Beck: 5-8 Jr. G (Played in three games)  
 Jazmine Foreman: 5-5 Jr. G (6.8 ppg; 4.0 rpg)  
 Megan Marks: 6-2 Jr. F (1.4 ppg; 1.6 rpg)  
 Keilani Moeaki: 6-2 Jr. F (5.3 ppg; 2.8 rpg)  
 Mindy Nielson: 5-10 Jr. G (10.4 ppg; 3.9 rpg)  
 Coriann Wood: 6-1 Jr. F (6.4 ppg; 4.8 rpg)  
 Stephanie Buhler: 6-0, So F (2.4 ppg, 0.2 rpg)  
 Jenteal Jackson: 5-7, So G (1.0 ppg, 0.7 rpg)  
 Kristen Riley: 6-3, So. F (3.3 ppg, 3.6 rpg)  
 Dani Peterson: 6-1, So. F (2.0 ppg, 1.5 rpg)  
 Haley Hall: 5-4 Jr. G (played in 7 games in 2006-07)\*

##### Letterwinners Lost: (3)

Sarah Hostetter: (2.6 ppg; 1.0 rpg)  
 Cassie King: (7.9 ppg; 6.0 rpg)  
 Shawnee Slade: (9.8 ppg; 4.0 rpg)

##### Starters Returning: (3)

Mindy Nielson: 5-10 Jr. G (10.4 ppg; 3.9 rpg)  
 Jazmine Foreman: 5-5 Jr. G (6.8 ppg; 4.0 rpg)  
 Keilani Moeaki: 6-2 Jr. F (5.3 ppg; 2.8 rpg)

##### Starters Lost: (2)

Cassie King: (7.9 ppg; 6.0 rpg)  
 Shawnee Slade: (9.8 ppg; 4.0 rpg)

##### Newcomers: (3)

Alexis Kaufusi: 6-1 F (Provo, UT / Timpview HS)^  
 Kim Parker: 5-11 G/F (Heber City, UT / Wasatch HS)  
 Stephanie Vermunt: 6-0 F (Airdrie, Alb., Can / Bert Church HS)

\* Played in six games in 2006-07 prior to torn ACL injury. Reinjured it in 2007-08. ACL injury 2008-09  
 ^ 2008-09 Redshirt

### 2009-10 STATS SUMMARY

- ✓ Shooting from field: (.440, 418-949)
- ✓ Shooting from three-point line: (.362, 112-309)
- ✓ Shooting from free-throw line: (.624, 153-245)
- ✓ Average points per game: 68.8
- ✓ Average rebounds per game: 39.2
- ✓ Average assists per game: 16.9
- ✓ Average steals per game: 10.4
- ✓ Average blocks per game: 3.4
- ✓ Average turnovers per game: 17.7

### PLAYER INJURY REPORT

Freshman guard Kim Parker suffered a season ending injury in the game at Weber State. She has torn ligaments in her left foot.

Sophomore guard Jenteal Jackson will apply for a medical redshirt for this year due to an on-going back problem.

### FRESHMAN TO REDSHIRT

Stephanie Vermunt, a 6-0 freshman guard/forward from Airdrie, Alberta, Canada will redshirt the 2009-10 season.

### TEAM CAPTAINS

Senior guard Jaime Judkins and junior guard Haley Hall have been selected by their teammates as co-captains for the 2009-10 season.

### PREVIOUS GAME - AT WYOMING (1/19/10)

The BYU Cougars shot an amazing 90 percent from the charity stripe but couldn't quite keep the lead in its first loss in conference play against the Wyoming Cowgirls with a 54-69 ending score.

"We didn't execute our game plan," said BYU head coach Jeff Judkins. "We missed some easy shots that we should've made. We need to learn to play better offensively and defensively."

The Cougars started the first half strong shooting 83 percent in the first five minutes, missing only one field goal, compared to Wyoming's 38 percent to take a 5-point lead.

Tough three-point shooting plagued the Cougars as they went 1-12 from the line compared to the Cowgirls' 12-27. The Cowgirls currently lead the MWC in 3-point shooting percentage.

The Cowgirls took their first lead of the game after just two minutes of play in the second half after a free-throw from Randi Richardson. Richardson finished with seven points and two rebounds.

In every game this season, at least two BYU players have scored in double-figures. Against Wyoming, two Cougars scored in double-figures. Haley Hall and Alexis Kaufusi both finished with 11 points.

### USA Today ESPN Div. I Top 25 Coaches Poll -- (1/19/10) - Week 10

#### Rk. School

1. Connecticut (18-0)
2. Stanford (15-1)
3. Tennessee (16-1)
4. Ohio State (19-1)
5. Notre Dame (15-1)
6. Nebraska (16-0)
7. Duke (15-3)
8. Georgia (17-1)
9. Texas A&M (14-2)
10. Xavier (12-3)
11. West Virginia (17-1)
12. Baylor (14-3)
13. Oklahoma (12-4)
14. Wisconsin-Green Bay (16-0)
15. North Carolina (14-3)
16. Florida State (16-3)
17. Oklahoma State (15-2)
18. Georgetown (15-2)
19. LSU (13-3)
20. Vanderbilt (13-5)
21. Iowa State (13-3)
22. Virginia (12-5)
23. Texas (12-5)
24. TCU (13-4)\*
25. Kentucky (14-3)

\* 09-10 Opponent

### 2009-10 BYU's record when...

BYU leads at half . . . . .	10-1
Opponent leads at half . . . . .	2-3
Score is tied at the half . . . . .	0-0
Game goes into overtime. . . . .	0-1
BYU shoots 50 % or better . . . . .	2-1
Opponent shoots 50 % or better. . . . .	0-0
BYU makes five or more 3-pointers. . . . .	12-2
Opponent makes 5 or more 3-pointers . . . . .	3-2
BYU outrebounds opponent . . . . .	7-2
Opponent outrebounds BYU . . . . .	3-1
Rebounds are equal . . . . .	0-0
BYU has 16 and under turnovers . . . . .	4-1
Opponent has 16 and under . . . . .	3-1
BYU has 17-20 turnovers . . . . .	5-1
Opponent has 17-20 turnovers . . . . .	4-1
BYU has more than 20 turnovers . . . . .	3-2
Opponent has more than 20 turnovers . . . . .	5-2
Cougars play at home . . . . .	4-1
Cougars play on the road . . . . .	6-3
Cougars play at neutral site . . . . .	2-0

### 2008-09 SEASON REVIEW

Highlights of the 2008-09 season included a 10-game win streak that spanned from the end of November to the middle of January marking another winning campaign for BYU's women's basketball program.

The team compiled an impressive 18-11 overall record and finished in fifth place in the Mountain West Conference with an 8-8 mark.

Along the way, the Cougars recorded impressive wins over two Pac-10 schools, USC and Oregon, as well as convincing victories over Wright State, Long Beach State, Arkansas State, Nevada and the University of Portland. They also captured wins against instate foes Utah State, Southern Utah and Weber State.

Other highlights included tallying an 11-1 record when leading at the half, going 12-1 when outrebounding opponents and 13-7 when making at least five three pointers in a game. The team also grabbed a season-best 55 boards vs. Utah State in December, tying for second place in the program's history. They also had season bests in assists with 19 at Portland and in steals with 13 at San Diego State. In the win at Nevada, the team scored a season high 81 points. The team scored 60 points or more in 13 games winning all but one, and they had at least two players score in double figures in a total of 18 contests while capturing 12 wins. The deep bench on the BYU squad also played a vital role in the success of the season. There were a total of 17 games where the Cougar bench outscored the opponent bench, and of those the team won 11 of those contests.

As in years past, BYU achieved success during the 2009 MWC race sweeping the series against Colorado State, UNLV, and the Air Force Academy, splitting the series against Wyoming and TCU. The Cougars were the only team in league play to get a road win vs. the Horned Frogs.

With an 8-8 MWC record, the Cougars finished tied for fifth place with Wyoming, but went into the tournament as the sixth seed team because of tie breaking policies. In the league tournament played in Las Vegas at the Thomas & Mack Center, the Cougars faced UNLV and despite an strong come from behind effort, fell to the Rebels 58-66 in first round action. UNLV advanced into the semifinals before losing to San Diego State 63-71.

For the first time in the school's history, Cougar fans got a chance to see the nation's No. 1 ranked team play in the Marriott Center. Connecticut, who went on to win the 2009 NCAA Championships, played on the court on Nov. 25, 2008. On that night there were 3,109 fans in attendance making it the largest home crowd on the year, and the highest ranked basketball opponent men or women to ever play at the Marriott Center. When New Mexico played in Provo on Jan. 17, it was ranked 25th nationally, and was the second top-25 ranked team to make an appearance in Provo during the season.

The Cougar squad finished the year with an 8-6 record at home including a 67-45 victory over Oregon on Nov. 21 which improved coach Jeff Judkins' home opener record to 7-1 in his seven seasons.

BYU ended the year going 8-5 on the road and 2-0 when playing at neutral sites.

### 2009-10 BYU Numerical Roster

No.	Name	Pos.	Ht.	Cl.	Exp.	Hometown/Previous School
1	Jenteal Jackson	G	5-7	So	1V	Salt Lake City, UT/Skyline HS
3	Jazmine Foreman	G	5-5	Jr	2V	Vancouver, WA/Hudson's Bay HS
4	Kim Parker	G	5-11	Fr	HS	Heber City, UT/Wasatch HS
10	Alexis Kaufusi	F/C	6-1	Fr/RS	HS	Provo, UT/Timpview HS
12	Stephanie Vermunt	G/F	6-0	Fr	HS	Airdrie, Alberta, Canada/Bert Church HS
13	Jaime Judkins	G	5-6	Sr	3V	Salt Lake City, UT/Skyline HS
21	Stephanie Buhler Bates	F	6-0	So	1V	Oregon City, OR/Oregon City HS
22	Mindy Bonham (Nielson)	G	5-10	Jr	2V	Centennial, CO/Regis Jesuit HS
23	Coriann Wood	F	6-1	Jr	2V	Basin City, WA/Connell HS
31	Marie Beck	G	5-8	Jr	2V	Oxnard, CA/Channel Islands HS
32	Dani Peterson	F	6-1	So	1V	Salt Lake City, UT/Skyline HS
33	Haley Hall^	G	5-4	Jr	1V	Syracuse, UT/Clearfield HS
35	Kristen Riley	F	6-3	So	1V	San Clemente, CA/San Clemente HS
45	Keilani Moeaki	F	6-2	Jr	2V	Warrenville, IL/Wheaton Warrenville South HS
55	Megan Marks Leach	F	6-2	Jr	2V	South Jordan, UT/Bingham HS

^ Did not compete in 2008-09 due to third ACL injury at the beginning of the year

**Head Coach:** Jeff Judkins

**Assistant Coaches:** Alli Bills, Stacy Jensen, Chris Boettcher

**Director of Basketball Operations:** Dan Doerflein

**Athletic Trainer:** Carolyn Billings

**Team Manager:** Erica Eyestone

### TEAM HIGHLIGHTS (2009-10)

- Team's best field goal percentage, nonconference: (.500, 30-60) vs. Hawaii, 12/5/09
- Team's best field goal percentage, in league play: (.600, 33-55), vs. Air Force, 1/13/10
- Team's best 3-point field goal percentage, nonconference: (.571, 8-14) at Montana State, 11/20/09
- Team's best 3-point field goal percentage, in league play: (.500, 8-16), at Colorado State, 1/16/10
- Team's best free throw percentage, nonconference: (.800, 12-15), vs. Nevada, 1/2/10
- Team's best free throw percentage, in league play: (.900, 9-10), at Wyoming, 1/19/10
- Most assists in nonconference: 23 vs. Hawaii, 12/5/09
- Most assists in league play: 29 vs. Air Force, 1/13/10
- Most blocks in nonconference: 7 at SUU, 11/24/09
- Most blocks in league play: 8 vs. Air Force, 1/13/10
- Most steals in nonconference: 20 at SUU, 11/24/09
- Most steals in league play: 18 vs. Air Force, 1/13/10
- Least number of turnovers, nonconference: 6 vs. Portland, 12/31/09
- Least number of turnovers, in league play: 11 at Wyoming, 1/19/10 and at UNLV, 1/6/10
- Most rebounds in league play: 40 vs. UNLV, 1/6/10
- The 50 rebounds BYU had in the win at Montana State on 11/20/09 tie for 10th place in the team's all-time records for boards per game and as of 12/20/09 are the most to date
- The 37 point margin of victory in the win over Hawaii is the most this season and the 81 points scored are season highs. The last time the Cougars scored over 80 points was on Dec. 10, 2005 where they beat NAU 82-48 at home. In that same game BYU went into the locker room at halftime up 48-16, a 32-point advantage which is the biggest first half lead by the team so far this year.
- The team scored 77 points in the win against the Air Force Academy on 1/13/09 for the third best scoring output of the season and the best in league play to date.
- All 14 players on the Cougar roster played in the contest at SUU.
- As of Jan.20 at least two BYU players have scored in double-figures in every game. In the last game at Wyoming two players had double digit performances for the fourth time this season and the second in league play.
- In the game vs. the University of San Francisco nine of the 11 players scored and all of them contributed in rebounds.
- In the home game vs. Portland, BYU picked up a 69-57 victory over Portland making it the second time this year that the team has put up less than 70 points and won.
- In the road game at Utah State, BYU won 61-48 marking the first time this season that the team has scored under 70 points and captured a win.
- Head Coach Jeff Judkins improved to 8-1 in home openers with the 73-51 victory over Utah Valley University on Nov. 13

---

### PLAYER HIGHLIGHTS (2009-10) STARTERS/RESERVES

#### STARTERS

##### Jazmine Foreman:

- picked up her sixth double digit contest of the year with 12 points in the road win at CSU on 1/16/10 which is also her 12th career double figure outing, in the same game dished out a team and game high six assists which also tie for season highs
- scored in double figures for the fifth time this season and 11th career with 19 points in the league win over the Air Force Academy on 1/13/10, 15 of them were from making five 3-pointers and the total points were team and game highs
- led all scorers with 19 points in the league win at UNLV on 1/6/10 recording her fourth double figure game of the season and her 10th in her career
- with the six assists in the win vs. Nevada on 1/2/10 she ties the number of assists (43) she had tallied her freshman season
- for the second straight game, dished out six assists, this time vs. Portland on 12/31/09 which tie for season highs
- dished out a total of six assists in the game at Utah State on 12/19/09 for new season highs
- had 11 points in the game at Weber State on 12/9/09 for her third double figure game of the year and ninth in her career and also tallied six steals for new season and career highs in that category
- scored a season and career high 21 points in the win over Hawaii on 12/5/09. The points were team and game highs and marked her eighth career double figure outing and her second this season
- of the 21 points scored vs. Hawaii, 12 were from three-point range while the four treys were also season and career highs in three-pointers made in a game
- In the game vs. Hawaii she led the team in steals with five for new season and career highs in that category. The five steals were also team and game highs
- dished out five assists in the win over San Francisco on 12/4/09 for season highs and were also team and game highs
- recorded 11 points in the home game vs. Kansas St., on 11/27/09 for her first double digit outing of the season and her seventh overall
- grabbed five boards in the home game vs. Kansas State on 11/27/09 for season highs

##### Haley Hall:

- scored 11 points in the game at Wyoming on 1/19/10 for her sixth season and 10th career double figure game
- playing in her third MWC game of the 2010 campaign, picked up five points, five rebounds and five assists in the road win at CSU on 1/16/10
- scored 11 points in the home win vs. Nevada for her fifth double figure contest of the season and her ninth overall and in that same game grabbed new season and career highs in rebounds with six
- dished out a total of six assists and five rebounds in the home win over Portland on 12/31/09 tying season highs in both of those categories
- recorded her fourth double digit game of the year and seventh career with 10 points vs. Portland on 12/31/09
- tied her season and career highs in rebounds with five at Utah State on 12/19/09
- scored 10 points vs. Kansas State for her third time scoring in double-figures this season and her sixth time in her career
- in the road game at Southern Utah on 11/24/09, she tallied five steals for new season and career highs
- for the second straight time scored in double digits with 12 at Montana State on 11/20/09 for her fifth career outing
- led the team in points with 14 including four treys in the road game at Washington on 11/18/09, the points are just one shy of her career high 15 she scored in the road game at Stanford on 11/13/06
- in the first game of the year dished out a career high eight assists which also ended up being team and game highs

---

### Keilani Moeaki:

- picked up 11 points at Weber State on 12/9/09 recording her third season and 11th career double figure outing, also had seven rebounds for new season highs
- with 11 points in the first road game of the season at Washington on 11/18/09, she has back-to-back games in which she's scored in double digits, marking her 10th career and second this year
- had her first double figure performances in the win over UVU with 14 points, marking her ninth career outing
- grabbed four offensive rebounds vs. UVU on 11/13/09

### Mindy Bonham (Nielson):

- recorded her 11th season and 30th career double digit performance with 11 points in the road win at CSU on 1/16/10
- dished out a team and game high nine assists for the second straight time in the home win against the Air Force on 1/13/09, the assists were also team and game highs
- scored 11 points and dished out nine assists in the win over the Rebels on 1/6/10 for her 10th double digit performance of the year and her 29th overall, and the nine assists are new season highs and tie for career highs
- tallied 13 points recording her fourth straight, ninth season and 28th overall double figure contest in the home win over Portland on 12/31/09
- recorded her third straight game in which she has scored in double figures with 12 at Utah State on 12/19/09 marking her eighth double digit contest of the season and 27th overall, also dished out seven assist for season highs in that category
- picked up a season high 24 points at CS Fullerton on 12/12/09 for her seventh double figure game of the season and her 26th overall, the 24 points were team highs and tied for game highs, also dished out four assists for season highs in that category
- led all scorers with 18 points at Weber State on 12/9/09 for her sixth double digit game this year and 25th in her career
- scored 14 points vs. San Francisco on 12/4/09 recording her fifth season and 24th overall double figure outing
- tied her career-high with eight rebounds and led the team with 13 points vs Kansas State. It was her fourth time scoring in double-figures this season and 23rd time in her career
- for a third straight time has scored in double figures with 11 points at Montana State on 11/20/09 making it her 22nd overall
- had her second consecutive game where she's put up double digit numbers with 10 points at Washington on 11/18/09 for her 21st overall and second this season.
- recorded her first double digit game of the year and 20th overall with 14 points in the season opener victory over UVU.
- had a team and game high three steals in the win over UVU on 11/13/09

### Kristen Riley:

- led the team in rebounds for the second straight time with seven in the road game at Wyoming on 1/19/10
- tied her season and career high in rebounds grabbing nine in the road win at CSU on 1/16/10 which were also team highs
- recorded her sixth season and career double figure contest with 17 points in the win vs. Air Force on 1/13/10, the points were also new season and career highs, and also tied her season high in steals with three
- picked up 10 points in the home win vs. Nevada for her fifth season and career double digit performance, and the points also increase her overall points on the year to 98 which surpasses the 97 point total in her freshman year
- led the team in rebounds with nine in the game at Utah State on 12/19/09 for new season and career highs and also tallied 11 points for her fourth season and career double figure outing
- scored 10 points at Weber State on 12/9/09 for her third season and career double digit contest
- picked up season and career highs in points with a team and game high 15 points vs. San Francisco on 12/4/09, marking her second double digit performance of the season and her career
- dished out three assists vs. Kansas State on 11/27/09 for season and career highs
- recorded three steals in the road win at SUU on 11/24/09 for season and career highs in that category

- had 12 points at Montana State on 11/20/09, also grabbed six rebounds and went (.750, 6-8) from the free throw line
- scored eight points in the home opener vs. UVU on 11/13/09 for her second best overall in her career
- grabbed six rebounds in the game vs. Utah Valley which tie for third place in her career in that category

### RESERVES

#### Coriann Wood:

- led all scorers and picked up new season and career highs in points with 21 in the road win at CSU on 1/16/10 for her ninth season and 18th career double digit outing
- recorded her second double double of the season and her career with 17 points and 10 rebounds, has now scored in double figures in a total of eight games this year, 17 overall and five straight, and the total boards were team and game highs
- had team and game highs in points with 12 vs. Nevada on 1/2/09 marking her seventh double figure game of the year and her 16th overall, and in the same game was perfect from the free throw line (2-2) and from behind the arc (2-2)
- picked up new season and career highs in points with 17 in the home win over Portland on 12/31/09 ... the double digit output is her sixth this year and 15th in her career, the points were team and game highs and she had tallied 15 of the 17 points in the first half of the game
- had her second consecutive game in which she has scored in double figures with 12 at Utah State on 12/19/09 while the points mark her fifth season and 14th career double digit performance ... in the same game was perfect from the free throw line (1.000, 6-6)
- recorded her first ever double double with a season and career high 16 points and 10 boards in the game at CS Fullerton on 12/12/09 ... the 10 rebounds were team and game highs ... the points mark her fourth double digit performance of the season and 13th overall and of the total points scored, nine were from three-point range which are season highs in that category
- in the road game at CS Fullerton dished out two assists for season highs
- led all players grabbing 11 boards in the game at Weber on 12/5/09 for season and career highs in the rebound category
- tied her career- and-season record with two blocks in the game vs. Kansas State and also had two steals for season and career highs
- tied in team and game highs in points with 12 at SUU on 11/24/09 marking her third double figure game of the season and 12th overall
- in the game at Washington on 11/18/09 tied for a team high five rebounds
- scored in double digits for the second straight time with 11 points in the game at Washington on 11/18/09 making it her 11th in her career
- picked up her first double figure game in the 2009-10 season in the game vs. UVU on 11/13/09 scoring 10 points off the bench, marking her 10th overall
- grabbed eight boards in the win vs. Utah Valley on 11/13/09 which were team and game highs in that category

#### Alexis Kaufusi

- recorded her sixth season and career double digit outing with 11 points in the road game at Wyoming on 1/19/10
- playing in her first ever MWC game at UNLV on 1/6/10 scored 10 points for her fifth double figure game of the season and career
- in the game at CS Fullerton scored 12 points for her fourth double digit outing of the season and her career
- had three steals in the game vs. San Francisco on 12/4/09 for new season and career highs
- picked up her third double figure scoring game of the season with 12 points vs. San Francisco on 12/4/09
- recorded her first double double of her career and of the season with 12 points and 11 rebounds at SUU on 11/24/09, the points tied for game and team highs as well
- scored 12 points and grabbed nine boards in the game at Montana State on 11/20/09 recording season and career highs in both categories
- came off the bench recording four points on 11/13/09 vs. UVU, in her first collegiate game of her career after red shirting last season



Dani Peterson:

- grabbed season and career highs in rebounds with nine at Montana State on 11/20/09 and also scored eight points after coming off the bench for 13 minutes of playing time
- in the first game of the 2009-10 campaign recorded career highs in points with 10 coming off the bench

Kim Parker: (suffered foot injury in the game at Weber State on 12/09/09 and will redshirt rest of season)

- dished out two assists in the game vs. Hawaii on 12/5/09 for season and career highs
- scored five points in the win over Hawaii which tie for season and career highs and also grabbed five rebounds for season and career highs in that category
- tied her season and career high in points with five at SUU on 11/24/09
- scored three points in the road game at Montana State on 11/20/09 and also grabbed four rebounds for season and career highs in that category
- came off the bench to score five points and grabbed one offensive rebound in the road game at Washington on 11/18/09, marking her first points scored in her college career

Jaime Judkins:

- had four steals for new season and career highs in that category in the win vs. Air Force on 1/13/10
- with the four points scored in the home win vs. Nevada on 1/2/10, has tallied a total of 21 points which are the most she has scored in her four year career
- dished out four assists in the win over Hawaii on 12/5/09 for season and career highs
- scored six points all from three-point range in the road game at Montana State on 11/20/09

Jenteal Jackson: (will apply for a medical redshirt year due to an ongoing back injury)

- had two steals at SUU on 11/24/09 which tie for career highs in that category, they are also season highs to date

### 2009-10 Game-by-Game Double Figure Scoring

Opponent	Date	How Many	Player (Points)
vs. Utah Valley	11/13/09	(4)	Nielson (14), Moeaki (14), Peterson (10), Wood (10)
@ Washington	11/18/09	(4)	Hall (14), Moeaki (11), Wood (11), Nielson (10)
@ Montana State	11/20/09	(4)	Hall (12), Riley (12), Kaufusi (12), Nielson (11)
@ Southern Utah	11/24/09	(2)	Wood (12), Kaufusi (12)
vs. Kansas State	11/27/09	(3)	Nielson (13), Foreman (11), Hall (10)
vs. San Francisco	12/4/09	(3)	Riley (15), Nielson (14), Kaufusi (12)
vs. Hawai'i	12/5/09	(2)	Foreman (21), Wood (11)
@ Weber State	12/9/09	(4)	Nielson (18), Moeaki (11), Foreman (11), Riley (10)
@ CS Fullerton	12/12/09	(3)	Nielson (24), Wood (16), Kaufusi (12)
@ Utah State	12/19/09	(3)	Nielson (12), Wood (12), Riley (11)
vs. Portland	12/31/09	(3)	Wood (17), Bonham (13), Hall (10)
vs. Nevada	01/02/10	(3)	Wood (12), Hall (11), Riley (10)
@ UNLV	01/06/10	(4)	Foreman (19), Wood (17), Bonham (11), Hall (10)
vs. Air Force Academy	01/13/10	(2)	Foreman (19), Riley (17)
@ Colorado State	01/16/10	(3)	Wood (21), Foreman (12), Bonham (11)
@ Wyoming	01/19/10	(2)	Hall (11), Kaufusi (11)

**Note: During the 2008-09 season**

- in two games four players scored in double digits;
- in a total of four games three players tallied double digits;
- in 11 games two players had double figures;
- in just one game, five players scored in double figures

**TRACKING BYU BENCH (AS OF 1/20/10)**

📖 The Cougar bench continues to play a key role on the team this season. In points, the BYU bench has scored a total of 208 points to opponents 111. In the rebound category, the Cougar reserves have grabbed a total of 321 boards compared with 210 for the opponents.

📖 In the nonconference games, the most points scored by the BYU bench were 18 vs. SUU on 11/24/09. In that game the Thunderbirds bench scored seven points. In the steals category, the Cougar bench had seven while SUU had none.

📖 In nonconference contests, the Cougar bench grabbed 37 rebounds vs. Hawaii on 12/5/09. The Rainbow Wahine bench grabbed 17, and in that same game BYU had seven assists to Hawaii's five.

📖 After four league games, the BYU reserves have scored 92 points to 39 for conference foes. In the rebound category, the Cougars grabbed 45 to 29 boards.

### 2009-10 Mountain West Conference

#### 2009-10 Preseason Poll

BYU's women's basketball team was picked to finish sixth in the league race by the MWC Preseason Coaches and Media Poll.

#### 2009-10 Mountain West Conference Preseason Poll

Rk.	Team (1st Place votes)	Points
1.	San Diego State (25)	240
2.	TCU (3)	216
3.	Utah	185
4.	New Mexico	168
5.	Wyoming	121
<b>6.</b>	<b>BYU</b>	<b>109</b>
7.	UNLV	97
8.	Colorado State	57
9.	Air Force	31

#### 2009-10 MWC Women's Basketball Weekly Schedule

Jan. 19 (Tuesday)	Time (TV)
BYU at Wyoming	6 p.m. (The Mtn.)
Jan. 20 (Wednesday)	Time (TV)
AFA at UNM	7 p.m.
CSU at UNLV	7 p.m.
SDSU vs. Utah	8 p.m. (CBS C)
Jan. 23 (Saturday)	Time (TV)
AFA vs. Utah	2 p.m.
BYU vs. SDSU	2 p.m.
CSU vs. UNM	2 p.m.
TCU at UNLV	3 p.m.

#### 2009-10 MWC Women's Basketball Standings (01/21/10)

Team (Rank)	Conf. Games	All Games
SDSU	4-1	12-5
TCU (22/rv)	3-1	13-4
BYU	3-1	12-4
Wyoming	3-2	12-5
New Mexico (rv/nr)	3-2	11-6
CSU	2-2	10-7
Utah	1-3	10-7
UNLV	1-4	8-11
Air Force	0-4	3-14

### 2009-10 MWC Statistics - BYU in the league - 01/21/10

<b>Team Stats</b>	<b>All Gms</b>	<b>MWC Gms</b>
Scoring Offense.....	3rd.....	2nd
Scoring Defense.....	2nd.....	5th
Scoring Margin.....	2nd.....	3rd
Free Throw %.....	9th.....	4th
Field Goal %.....	1st.....	1st
Field Goal % Defense.....	4th.....	7th
3-PT Field Goal %.....	2nd.....	3rd
3-PT Field Goal % Defense.....	3th.....	8th
Rebounding Offense.....	3rd.....	9th
Rebounding Defense.....	2nd.....	4th
Rebounding Margin.....	1st.....	6th(t)
Blocked Shots.....	6th.....	8th
Assists.....	1st.....	1st
Steals.....	2nd.....	2nd
Turnover Margin.....	4th.....	2nd
Assist/Turnover Ratio.....	4th.....	1st
Offensive Rebounds.....	2nd.....	6th
Defensive Rebounds.....	5th.....	8th
Offensive Rebound %.....	2nd.....	6th
Defensive Rebound %.....	4th.....	6th
3-PT Field Goals Made.....	3rd.....	3rd

<b>Individual Stats</b>	<b>All Gms</b>	<b>MWC Gms</b>
Scoring.....	15th Bonham (11.4).....	18th (9.5)
.....	20th Wood (10.4).....	12th (11.5)
.....	n/a.....	Foreman, 6th (14.5)
Rebounding.....	12th Wood (5.9).....	15th(t) (5.5)
.....	16th Kaufusi (5.4).....	n/a
.....	19th Riley (5.2).....	14th (5.8)
Field Goal %.....	4th Foreman (.505, 56-111).....	3rd(t) (.556, 20-36)
.....	5th Kaufusi (.500, 48-96).....	3rd(t) (.556, 15-27)
.....	8th Bonham (.477, 74-155).....	n/a
.....	9th Riley(.473, 53-112).....	8th (.485, 16-33)
Assists.....	4th Hall (4.6).....	3rd (5.3)
.....	8th Bonham (3.6).....	2nd (5.8)
.....	9th Foreman (3.6).....	11th(t) (3.5)
Steals.....	2nd Hall (2.5).....	8th(t) (2.0)
.....	5th Foreman (2.1).....	3rd (2.5)
.....	9th Bonham (1.9).....	13th(t) (1.8)
.....	n/a.....	Riley, 13th(t) (1.8)
3-PT Field Goal %.....	1st Foreman (.510, 25-49).....	2nd (.526, 10-19)
.....	7th Hall (.372, 29-78).....	10th (.333, 6-18)
.....	n/a.....	Wood, 6th(t) (.400, 6-15)
3-PT Field Goal Made.....	10th Hall (1.8).....	10th(t) (1.5)
.....	14th Foreman (1.6).....	2nd (2.5)
.....	n/a.....	Wood, 10th(t) (1.5)
Blocked Shots.....	15th Wood (2.0).....	n/a
Assist/Turnover Ratio.....	2nd Hall (2.6).....	2nd (2.3)
.....	6th Foreman (1.4).....	6th (1.8)
.....	8th Bonham (1.3).....	3rd (2.3)
Offensive Rebounds.....	13th Wood (2.0).....	13th(t) (2.0)
.....	n/a.....	Riley, 10th (2.5)
Defensive Rebounds.....	15th Wood (3.9).....	15th(t) (3.5)
.....	n/a.....	Kaufusi, 15th(t) (3.5)



**Head Coach - Jeff Judkins**

**Overall Record:** 169-93

**2009-10:** 12-4, 3-1

Jeff Judkins begins his ninth year as head coach of the women's basketball program, after garnering back-to-back MWC Coach of the Year honors in 2006 and 2007. Prior

to heading up the women's program, he served one year (1999-2000) as Director of Basketball Operations for the BYU men's team. In (2000-2001) he was an assistant coach on the women's team.

In five of the last eight seasons, the Cougar team has participated in postseason tournaments including back-to-back NCAA tournament appearances in 2006 and 2007. This past season BYU compiled a 18-11, 8-8 (t-fifth) record on the year with junior Mindy Nielson garnering two MWC honors on the All-Conference Third Team and on the All-Defensive Team. Graduating seniors and co-captains Shawnee Slade and Cassie King were named Honorable Mention All-MWC. King was also named to the CoSIDA ESPN The Magazine Academic District 8 University Second Team.

The Cougar team recorded back-to-back MWC Regular Season Titles in 2006 and 2007 with players Ambrosia Anderson and Dani Wright being named MWC Co-Players of the Year those same seasons.

During Judkins' fifth season, the 2005-06 campaign, the Cougar squad compiled its best finish in school history with a 26-6 record, clinched its first MWC regular season title since 1992 and received a no. 7 seed in the NCAA tournament, the highest seed for any BYU program.

For the first time since the 2002-03 season, the 2005-06 squad and its 13-1 record to start the year, broke into the women's basketball collegiate polls, ranked no. 23 by the AP Poll and the USA Today/ESPN/WBCA Coaches Poll. They would move up the poll to as high as 18 and 16 in the two respective polls, finishing the year at no. 20. In that same season Judkins picked up his 100th win, a 69-67 victory over CSU on Mar. 2, the same time the team clinched the league's regular season title.

Under Judkins tutelage the women's basketball program has had consistent success with four postseason appearances including three NCAA Championships, guiding the team to its first ever Sweet Sixteen finish in 2002. In 2005, the 19-11 team played in the first round of the WNIT. Judkins has also coached two All-Americans in Erin Thorn and Ambrosia Anderson. Both have gone on to play in the WNBA. Thorn has been with the New York Liberty team for five years while Anderson completed one season with the Liberty team.

The longtime University of Utah coach and player came to Provo with a proven record of success dating back to his high school days at Highland High School in Salt Lake City.

An all-state selection in basketball, football and baseball, Judkins went on to play for the University of Utah from 1974-78.

While playing at Utah, Judkins helped lead the Utes to one conference championship and two berths in the NCAA tournament. He was a second-team academic All-American and three-time District VII academic selection. He also earned three First Team All-WAC honors and was a member of the 1977 United States World Games team that captured the gold medal.

Judkins also played five years in the National Basketball Association for the Boston Celtics, Portland Trailblazers, Detroit Pistons and Utah Jazz. He was a second-round pick of the Celtics in 1978, the same year the Celtics selected Larry Bird with the sixth pick overall.

After his NBA career, he returned to Utah in 1989 and was an instrumental part of the program's success during his 10 years with the program, recruiting such players as Keith Van Horn, Andre Miller, Mike Doleac, Hanno Mottola, Alex Jensen, Trent Whiting, Garner Meads, Jeff Johnsen and Britton Johnsen.

Judkins, graduated from the University of Utah in 1978 with a degree in health and physical education.

He and his wife Mary Kaye are the parents of five children: Jessica (29), {married to Paul}, Jordan (27), Jenna (25), {married to Whitney Neves who was a pole vaulter on the BYU men's track & field team} Jaime (22), and Jaxson (19). Jenna played four years on the volleyball team at BYU.

Hobbies: waterskiing, horseback riding, hunting, golf, softball, listening to music, and watching ESPN.

Judkins Coaching Record			
School	Yrs.	Rec.	Postseason
BYU	2001-02	24-9	NCAA Sweet 16
BYU	2002-03	19-12	NCAA 1st Round
BYU	2003-04	15-14	DNC
BYU	2004-05	19-11	WNIT 1st Round
BYU	2005-06	26-6	NCAA 2nd Round
BYU	2006-07	23-10	NCAA 1st Round
BYU	2007-08	13-16	DNC
BYU	2008-09	18-11	DNC
BYU	2009-10	12-4	

### SATURDAY'S MWC COUGAR OPPONENT

#### SAN DIEGO STATE - SAT. JAN. 23 AT 2 P.M. MST (PROVO, UT) - MARRIOTT CENTER

San Diego State comes to Provo this weekend at the top of the MWC standings with a 4-1 league record and 12-5 overall. The Aztecs lone conference loss was to No. 22 TCU. Currently, three players are scoring in double digits for SDSU led by seniors Jene Morris and Quenese Davis. Morris tops the list with 15.3 points, 3.0 steals and averages 2.5 rebounds while Davis contributes 12.7 points, 5.2 rebounds and a team high 4.8 assists per contest. Junior center Paris Johnson rounds out the double figure scoring with 10.8 points and 6.5 boards. Jessika Bradley leads the way in rebounds grabbing 7.6 boards per game. Head coach Beth Burns is in her 13th season with the Aztecs women's basketball program.

#### SDSU Probable Starters

No.	Name	Pos.	Ht.	Yr.	PPG	RPG
01	Jessika Bradley	F	6-3	Jr	8.2	7.6
32	Paris Johnson	C	6-4	Jr	10.8	6.5
02	Coco Davis	G	5-9	Jr	5.0	4.2
03	Quenese Davis	G	5-10	Sr	12.7	5.2
05	Jene Morris	G	5-9	Sr	15.3	2.5

#### Stat Comparison

Category	BYU	SDSU
FG:	.440	.440
3FG:	.362	.354
FT:	.624	.695
Points:	68.8	64.1
Reb:	39.2	37.5

#### Series Information

Overall Series Record: BYU leads 25-12

BYU Record in Provo: 14-3

BYU Record in San Diego: 10-9

BYU Record in Neutral Sites: 1-0

BYU Record under Jeff Judkins: 13-3

BYU Record in Overtime Games: N/A

Longest BYU Win Streak: 13 (2001-2007)

Longest SDSU Win Streak: 3 (twice, '95-'96; '81-'91)

Largest BYU Margin of Victory: 32, 82-50 in 2004

Largest SDSU Margin of Victory: 26, 85-59 in 1996

#### A Look Back at the Series during the 2009 MWC Race

During last season's league games the Aztecs swept the series winning both contests. San Diego State has compiled a 3-14 record when playing in the Marriott Center with their last win coming on Feb. 25, 2009, a 59-47 victory for the Aztecs.

First meeting in 2009 — San Diego, CA on 01/24/09 Score: 56-36 for the Aztecs

Bad shooting plagued the matchup for the Cougars as they fell to the Aztecs for their second conference loss. Sarah Red-Hostetter led the Cougars with nine points, and Kristen Riley put up a career-high eight rebounds and three blocks.

#### Key Stats in 1st game

	BYU	San Diego State
Field Goal Percentage	12-51 (23.5%)	23-55 (41.8%)
Three-Point Percentage	1-10 (10%)	4-14 (28.6%)
Free-Throw Percentage	11-14 (78.6%)	6-13 (46.2%)
Rebounds	33	43

Second meeting in 2009 — Provo, UT on 02/25/09 Score: 59-47 for the Aztecs

Despite outrebounding their opponent, BYU fell to the Aztecs for the second time in the 08-09 season. Freshman Kristen Riley led BYU with six rebounds on the night, while three Cougars scored a team-high six points—Mindy Nielson, Jenteal Jackson and Keilani Moeaki.

### Key Stats in 2nd game

Field Goal Percentage	17-54 (31.5%)
Three-Point Percentage	4-12 (33.3%)
Free-Throw Percentage	9-17 (52.9%)
Rebounds	42

### BYU

### San Diego State

Field Goal Percentage	22-59 (37.3%)
Three-Point Percentage	8-20 (40%)
Free-Throw Percentage	7-15 (46.7%)
Rebounds	41

### WHAT'S NEXT

BYU remains at home for one more league game. The Cougars host the University of New Mexico on Wed., Jan. 27 at 7 p.m. That game can be seen live on BYU TV. The team then takes a short drive to Salt Lake City to battle instate rival and MWC foe Utah on Sat. Jan. 30. Tip off is at 3 p.m.

### 2009-10 RETURNING PLAYERS

**Jaime Judkins**

**Guard**

**5-6, Senior**

**Salt Lake City, UT - Skyline HS**

**#13**



**At BYU**

**SENIOR - (2009-2010):** had four steals for new season and career highs in that category in the win vs. Air Force on 1/13/10 ... with the four points scored in the home win vs. Nevada on 01/2/10 has tallied a total of 21 points which are the most she has scored in in her four year career ... dished out four assists in the win over Hawaii on 12/5/09 for new season and career highs ... in the second road contest of the season at Montana State on 11/20/09, scored six points all from three-point range ... scored three points and grabbed three rebounds in the first game of the season.

**JUNIOR - (2008-2009):** Final player notes: played in a total of 19 games ... was perfect from the line 2-2 for her two points vs. CSU on 1/10/09 which mark the third time on the season where she was perfect from free throw range, the other two games were vs. Oregon on 11/21/08 and at Portland on 1/3/09 ... picked up new season and career highs in points with seven in the game at Portland on 01/03/09 ... finished the year averaging 5.1 minutes of playing time with the most minutes 12 coming vs. the Air Force Academy ... played in 10 regular season contests and in nine league games ... had a total of 17 points, six rebounds and seven assists on the season ... named MWC Academic All-Conference.

**SOPHOMORE - (2007-2008):** Final player notes: played in 26 of the 29 games to date, starting in the game at Sacred Heart on 12/01/07 ... averaged 0.7 points and 0.5 rebounds per game ... picked up season and career highs in points and in rebounds in the game at UCSB on 11/9/07 with five points and three boards ... dished out season highs in assists with three in the contest at Weber State on 12/12/07 ... played an average of 7.0 minutes per game ... named Academic All-MWC.

**FRESHMAN - (2006-2007):** Final player notes: Played in a total of 23 games averaging 3.1 minutes of playing time ... of those 23 contests, eight were against conference opponents and she also saw action in the NCAA first round game vs. Louisville on 03/17/07 ... picked up a season high in points with three in the first game of the year vs. ISU on 11/10/06 ... grabbed a season and career high rebounds with three @ Baylor on 11/16/06 ... dished out a season and career high three assists vs. AF on 02/08/07, and in that same game played a new season and career high 13 minutes.

**Judkins**

**Points:**

**Rebounds:**

**3-PT FG's made:**

**Assists:**

**Steals:**

**Season Highs**

6 @ Washington, 11/20/09

3 vs. UVU, 11/13/09

2 @ Washington, 11/20/09

4 vs. Hawaii @ Hukilau Inv. 12/5/09

**Career Highs**

7 @ Portland, 01/03/09

same, twice more

same

same

1 @ AF, 3/1/08, four more

Judkins Stats											
Yr	G/GS	FG-FGA %	3FG-3FGA %	FT-FTA %	Pts.	Reb.	A.	To.	Bl.	St.	
07	23/0	1-6 .167	1-4 .250	2-5 .400	5	13	7	11	0	2	
08	26/1	5-26 .192	4-22 .182	4-4 1.000	18	14	18	17	0	5	
09	19/0	4-13 .308	3-10 .300	6-7 .857	17	6	7	3	0	3	
10	12/0	7-14 .538	4-11 .444	3-4 .750	21	12	11	4	0	6	



**Jazmine Foreman**  
**Guard**  
**5-5, Junior**  
**Vancouver, WA - Hudson's Bay HS**

**#3**



**At BYU**

**JUNIOR - (2009-2010):** picked up her sixth double digit contest of the year with 12 points in the road win at CSU on 1/16/10 which is also her 12th career double figure outing, in the same game dished out a team and game high six assists which also tie for season highs in that category ... scored in double figures for the fifth time this seson and 11th career with 19 points in the league home win over the Air Force on 1/13/1-, 15 of the them were from making five 3-pointers which were also new season and career highs in that category, the total points were team and game highs ... led all scorers with 19 points in the league win at UNLV on 1/6/10 recording her fourth double figure game of the season and her 10th in her career ... with the six assists in the home win over Nevada ties her season high in that category and also ties the number of assists she dished out her freshman season with 43 ... dished out six assists in the home game vs. Portland tying her season high in the assist category ... in the game at Utah State on 12/19/09 dished out a season high six assists ... picked up her third double figure game of the year and ninth career with 11 points at Weber State on 12/9/09 and also tallied six steals for season and career highs in that category ... scored a season and career high 21 points in the win over Hawaii on 12/5/09, and the points were team and game highs, they mark her eighth career double figure outing and her second this season ... of the 21 points scored in the Hawaii game, 12 were from three-point range while the four treys were season and career high in three pointers made in a game ... in the game vs. Hawaii led the team in steals with five and were also team and game highs ... dished out a season high five assists in the win over San Francisco on 12/4/09 ... recorded 11 points in the home game vs. Kansas State on 11/27/0 for her first double digit performance of the season and her seventh over-all, also grabbed season highs in rebounds with five ... grabbed four boards at Montana State on 11/20/09 for season highs in that category ... grabbed two rebounds, had one point, one assist and one steal in the first road game of the season at Washington on 11/18/09 ... started in the first game of the year vs. UVU on 11/13/09 scoring seven points and dishing out two assists.

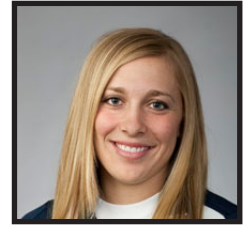
**SOPHOMORE - (2008-2009):** Final player notes: Started in all but the first game of the year ... recorded her sixth season and career double digit contest with 11 points in the game at Utah on 2/28/09 ... led the team in points with 10 vs. AFA on 2/4/09 marking her fifth double-digit scoring performance of the season and career ... had back-to-back league games where she grabbed six rebounds, vs. Utah on 1/28/09 and at Wyoming on 1/31/09 ... led the team and game in points with 16 vs. UNM on 1/17/09 marking her fourth double digit performance of the year and career ... grabbed a team, season, and career high nine boards in the road win at TCU on 1/13/09 ... scored a season and career high 19 points vs. USC on 12/6/08 to lead all scorers, she also had a team and game high six assists and she was perfect from the free-throw line 4-4, two of those points sealed the Cougar victory over the Trojans in the final seconds of the contest ... the 19 points marked her third double figure performance of the season... dished out eight assists vs. Wright St., on 12/5/08 for new season highs ... led or tied the team in assists in a total of 17 games and in steals in six contests ... ranks first in the assist category with 113 and second in steals with 42, four of those coming vs. Weber St., on 12/10/08 for season and career highs ... finishes he sophomore season ranked fourth in a total of five categories: points 6.8; field goals made with 70; free throws made with 36; rebounds, grabbing 4.0 per game ... and in defensive boards with a total of 90 for a 3.1 average ... ranks third in two categories: field goal attempts with 219 for a 7.6 average; three-point field goals made with 24 ... places second in the three-point field goal attempts category with 88 and a 3.0 average ... ranks fifth in the free throw attempts category with a total of 43 for a 1.5 average ... has the squads second best free throw percentage at .744 (32-43) ... had back-to-back double digit scoring performances, 12 at Portland St., and 10 at Nevada ... in MWC action finished the year in third place in the assists category in all games and in league play, placed in 10th place in all games in the steals category (1.45), and fourth and third respectively in all games and league action in the assists/turnover ratio category.

<b>Foreman</b>	<b>Season Highs</b>	<b>Career Highs</b>
<b>Points:</b>	21 vs. Hawaii @ Hukilau Inv.,12/5/09	same
<b>Rebounds:</b>	5 vs. Kansas St., 11/27/09	9 @ TCU on 1/13/09
<b>3-PT FG's made:</b>	5 vs. AFA, 1/13/10	same
<b>Assists:</b>	6 @ CSU, 1/16/10, three more	8 vs. Wright St., 12/5/08 @ BYU-H, once more
<b>Steals:</b>	6 @ Weber State, 12/9/09	same

<b>Foreman Stats</b>													
<b>Yr</b>	<b>G/GS</b>	<b>FG-FGA</b>	<b>%</b>	<b>3FG-3FGA</b>	<b>%</b>	<b>FT-FTA</b>	<b>%</b>	<b>Pts.</b>	<b>Reb.</b>	<b>A.</b>	<b>To.</b>	<b>Bl.</b>	<b>St.</b>
<b>08</b>	<b>29/9</b>	<b>17-75</b>	<b>.227</b>	<b>8-36</b>	<b>.222</b>	<b>8-16</b>	<b>.500</b>	<b>50</b>	<b>28</b>	<b>43</b>	<b>50</b>	<b>0</b>	<b>11</b>
<b>09</b>	<b>29/28</b>	<b>70-219</b>	<b>.320</b>	<b>24-88</b>	<b>.273</b>	<b>32-43</b>	<b>.744</b>	<b>196</b>	<b>115</b>	<b>113</b>	<b>82</b>	<b>1</b>	<b>42</b>
<b>10</b>	<b>16/16</b>	<b>56-111</b>	<b>.505</b>	<b>25-49</b>	<b>.510</b>	<b>25-35</b>	<b>.714</b>	<b>162</b>	<b>52</b>	<b>57</b>	<b>42</b>	<b>2</b>	<b>34</b>

**Haley Hall**  
**Guard**  
**5-4, Junior**  
**Syracuse, UT - Clearfield HS**

**#33**



**At BYU**

**JUNIOR - (2009-2010):** in the road game at Wyoming on 1/19/10 picked up her sixth season and 10th career double digit outing with 11 points ... playing in her third MWC game of the 2010 campaign, picked up five points, five rebounds and five assists in the road win at CSU on 1/16/10 ... grabbed six rebounds in the home win vs. Nevada on 1/2/10 for new season and career highs in that category, also scored 11 points for her fifth season and ninth career double figure contest .... scored 10 points vs. Portland on 12/31/09 recording her fourth this season and eighth in her career and also grabbed five rebounds tying her season and career high in that category ... tied season and career highs in rebounds at Utah State with five ... picked up 10 points vs. Kansas St., on 11/27/09 for her seventh in her career ... recorded season and career highs in steals with five in the road game at SUU on 11/24/09 ... for the second straight time scored in double digits with 12 at Montana State on 11/20/09 for her fifth career outing and second this year, all of the points came from three-point range ... led the team in points with 14 at Washington on 11/18/09 for season highs, also grabbed a career high five rebounds in that same contest, and the points were one shy of her career of 15 which she scored at Stanford on 11/13/06 ... started in the first contest of the year dishing out a team and game high eight assists which are also career highs.

**SOPHOMORE - (2008-2009):** Started in the first game of the year at Portland St., on 11/14/08, tallying 11 points and was 6-6 at the free throw line ... suffered a season-ending ACL injury to her right knee with a minute left in the same game ... did not play the rest of the season ... named MWC Academic All-Conference.

**(2007-08):** Injury redshirt

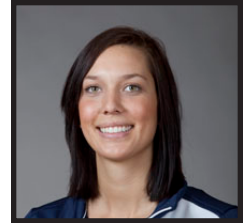
**FRESHMAN - (2006-2007):** Final player notes: Suffered season ending injury with a torn ACL to her left knee in the game @ New Mexico State on 12/06/06 ... Had played in all games to date ... picked up a season and career 15 points @ No. 4 Stanford on 11/10/06 to lead all scores in that game ... had four three-pointers in the same game ... scored in double figures in two games to date (15) @ Stanford, (10) @ Harvard.

Hall	Season Highs	Career Highs
Points:	14 @ Washington, 11/18/09	15 @ Stanford, 11/10/06
Rebounds:	6 vs. Nevada, 1/2/10	same
3-PT FG's made:	4 @ Montana St., 11/20/09	same, once more
Assists:	8 vs. UVU, 11/13/09	same
Steals:	5 @ SUU, 11/24/09	same

		Hall Stats								
Yr	G/GS	FG-FGA %	3FG-3FGA %	FT-FTA %	Pts.	Reb.	A.	To.	Bl.	St.
07	7/0	15-39 .385	9-20 .450	5-8 .625	44	12	17	19	1	6
08	Injury redshirt									
09	1/1	2-9 .222	1-3 .333	6-6 1.000	11	3	4	5	0	4
10	16/16	47-132 .356	29-78 .372	6-10 .600	129	52	74	29	2	40

**Megan Marks Leach**  
**Forward**  
**6-2, Junior**  
**South Jordan, UT - Bingham HS**

**#55**



**At BYU**

**JUNIOR - (2009-2010):** has seen playing time in six games to date including the home opener in the MWC race against Air Force on 1/13/10 ... played 12 minutes in the first game of the 2009-10 season grabbing three defensive rebounds, had one block and one steal in the same game.

**SOPHOMORE - (2008-2009):** Final player notes: played in a total of 16 games off the bench ... of those 16 contests eight were non conference and eight were league games ... dished out new career and season highs in assists with three vs. SDSU n 2/25/09 ... grabbed new season and career highs in the rebound category with six at Portland on 01/03/09 ... scored eight points in the game vs. SUU on 11/28/08 for new season and career highs in that category, and was a perfect 4-4 from the field ... with the eight points she surpassed last year's total points by two to 10 ... averaged 4.9 minutes of playing time with the most minutes coming in the game vs. SUU on 11/28/08 when she played for 11 minutes ... in three games she played 10 minutes at Portland, vs. the Air Force Academy and vs. San Diego State ... recorded a total of 26 rebounds and 23 points in her second season.

**FRESHMAN - (2007-2008):** Final player notes: played in 14 of the 29 games on the year ... averaged 3.9 minutes of playing time ... picked up season and career high in points with three in the game at Wyoming on 3/5/08 ... grabbed four rebounds in two games, at Wyoming on 3/5/08 and vs. Fresno State on 11/17/07 ... had a season and career high two blocks @ Utah on 2/19/08 ... played the most minutes (17) @ Wyoming on 3/5/08 ... named Academic All-MWC.

**Marks**

**Season Highs**

**Career Highs**

**Points:**

8 vs. SUU, 11/28/08

**Rebounds:**

6 @ Portland, 01/03/09

**3-PT FG's made:**

1 @ Wyoming, 03/05/08

**Assists:**

3 vs. SDSU, 2/25/09

**Steals:**

**Blocks:**

2 @ Utah, 02/19/08

		Leach Stats								
Yr	G/GS	FG-FGA %	3FG-3FGA %	FT-FTA %	Pts.	Reb.	A.	To.	Bl.	St.
08	14/0	3-13 .231	1-6 .167	1-3 .333	8	14	1	2	4	0
09	16/0	9-18 .500	2-4 .500	3-8 .375	23	26	7	11	2	2
10	6/0	0-10 .000	0-4 .000	2-2 1.000	2	9	1	2	5	2

### Keilani Moeaki

Forward

6-2, Junior

Warrenville, IL - Weaton Warrenville HS

# #45



#### At BYU

**JUNIOR - (2009-2010):** scored 11 points at Weber State on 12/9/09 recording her third season and 11th career double figure outing, and also had a season high in rebounds grabbing seven ... picked up her second double figure contest of the season with 11 points and her 10th overall in the game at Washington on 11/18/09 ... started in the season opener recording 14 points for her first double figure game of the year and her ninth career ... in the same game grabbed four offensive rebounds

**SOPHOMORE - (2008-2009):** Final player notes: started in all but four contests, starting with the SDSU game on 2/25/09 ... with a team and game high 13 points in the road game at Wyoming on 1/31/09 she now has five double digit contests this season and eight in her career ... recorded 12 points in the home game vs. Utah for her fourth this year and her seventh overall double digit performance ... grabbed eight boards vs. Utah St., which mark new season and career bests ... picked up 14 points at Nevada for new season highs ... led or tied the team in points and in rebounds in two contests on the year ... topped or tied the team in blocked shots in a total of 10 games ... places first on the squad in blocked shots with 19 ... finishes ranked third in the field goal percentage category .406, 63-155 ... grabbed 40 offensive boards which puts her in fourth place in that category ... in the field goals made category with a 63 total for a 2.2 average ... recorded 22 steals in all games placing sixth in that category ... ranks seventh in the rebound category grabbing 2.8 boards per contest ... in the MWC placed 13th and 12th respectively in the blocked shots category in all games and in league play.

**FRESHMAN - (2007-2008):** Final player notes: played in all 29 games and started in nine ... averaged 16.4 minutes of playing time per game ... picked up a season and career high 19 points and seven rebounds vs. Hartford on 11/20/07, in that same game was .700 (7-10) from the free throw line, and had three steals for season and career highs ... finished ranked sixth in scoring on the team with 3.6 points and tied for fourth place in the rebound category, grabbing 2.9 boards per contest ... was perfect from the free throw line 4-4 at USU on 12/29/07 ... ranked third in offensive rebounds with 33 (1.1) ... placed fourth in three categories on the team: field goal percentage .433 (39-90), free throw attempts 40 (1.4) and free throws made 20 (0.9) ... ranked seventh on the team at the end of the year in free throw percentage .650 (26-40).

#### Moeaki

Points:

Rebounds:

3-PT FG's made:

Assists:

Steals:

Blocks:

#### Season Highs

14 vs. UVU, 11/13/09

7 @ Weber St., 12/9/09

2 vs. UVU, 11/13/09

1 vs. UVU, 11/13/09

#### Career Highs

19 vs. Hartford, 11/20/07

8 vs. Utah State, 12/13/08

1 vs. Utah, 1/19/08

3, twice more

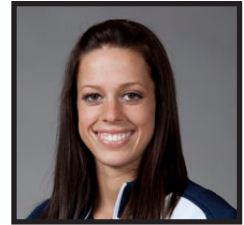
2, three more

2, three more

Moeaki Stats													
Yr	G/GS	FG-FGA	%	3FG-3fGA	%	FT-FTA	%	Pts.	Reb.	A.	To.	Bl.	St.
08	29/9	39-90	.433	1-2	.500	26-40	.650	105	84	26	70	7	8
09	29/25	63-155	.406	4-17	.235	24-37	.649	154	81	18	64	19	22
10	16/16	34-78	.436	5-12	.417	10-22	.455	83	41	16	31	3	7

**Mindy Bonham (Nielson)**

**#22**



**Guard**

**5-10, Junior**

**Centennial, CO - Regis Jesuit HS**

**At BYU**

**JUNIOR - (2009-10):** recorded her 11th season and 30th career double digit performance with 11 points in the road win at CSU on 1/16/10 ... dished out nine assists for the second straight time in the home win over Air Force on 1/13/10, the assists were also team and game highs ... scored 11 points and dished out nine assists in the win over the Rebels on 1/6/10 for her 10th double digit performance of the year and her 29th overall, the nine assists are new season highs and tie for career highs and were team and game highs ... picked up her ninth double figure game of the season and 28th career with 13 points vs. Portland on 12/31/09 and also making it her fourth straight ... scored 12 points for team highs in the road game at Utah State on 12/19/09 for her eighth double digit game of the season and her 27th overall and it was her third straight game in which she has scored in double digits, also dished out seven assists for new season highs ... picked up season highs in points with 24 in the road game at CS Fullerton marking her seventh double figure contest of the season and her 26th overall, the points were team highs and tied for game highs, also dished out a season high in assists with four ... led all scorers with 18 points at Weber State on 12/9/09 for her sixth double digit game this year and 25th in her career ... scored 14 points in the game vs. San Francisco on 12/4/09 marking her fifth season and 24th career double figure game ... tied her career-high with eight rebounds and led the team with 13 points vs. Kansas St., on 11/27/09 marking the fourth time scoring in double figures this season and 23rd in her career ... for a third straight time scored in double figures with 11 points at Montana State on 11/20/09 making it her 22nd overall ... picked up her second consecutive double digit outing with 10 points in the game at Washington on 11/18/09 marking her 21st overall and second this year ... started in the first game of the season where she scored 14 points, dished out two assist and had three steals.

**SOPHOMORE - (2008-2009):** Final player notes: started in all games ... named to the All-MWC Third Team and to the All-Defensive Team ... scored 11 points in the game at AFA on 3/7/09 for her 12th and 18th season and career double figure game which also mark four straight double digit contests ... led the team in scoring with 14 points in the contest at Utah on 2/28/09 marking her 10th double digit game of the year and 17th overall ... recorded her ninth double digit game of the year and 16th overall with a team high 13 points in the home win vs. UNLV on 2/21/09 ... tallied a team and game high four steals in the road game at Wyoming on 1/31/09 ... had new season and career highs in steals with six in the road win at UNLV on 1/21/09 ... in that same game posted 21 points to lead all scorers, and mark her eighth double figure game of the year and 15th career ... grabbed eight boards in the home game vs. UNM on 1/17/09 for new season and career highs in that category ... scored a team and game high 22 points in the road win at TCU on 1/13/09 for the second best scoring performance of the season and career ... the 22 points also marked her seventh and 14th career double digit output ... led the team and game in scoring with 13 vs. Arkansas St., on 12/30/08 for her sixth double digit contest of the year and the 13th in her career ... grabbed a total of seven boards for new season highs and tied her career high as well in the home win vs. CSU ... tallied 12 points in the game at Long Beach St., for her fifth double figure game of the year and 12th career ... tied her season best seven assists vs. Utah St., ... contributed 11 points in the home win against Weber St., on 12/10/08 marking her fourth double figure contest of the year and 11th overall ... scored 20 points vs. Wright State for her third double digit output of the season and her 10th overall ... tallied new season and career highs in points with 27 at Nevada ... the 27 points were game and team highs as well ... was 9-10 from the free throw line in that same game ... leads the team in scoring and in steals with 10.4 points and a total of 65 steals ... is second in assists dishing out 93 this year ... has the best free throw percentage on the team .787, (37-47) ... topped or tied the list in points in a total of 10 games; in assists in 11 contests; and in steals in 14 games ... finishes the year ranked first in both field goals attempted and made with 313 and 123 respectively ... ranks fourth on the squad in four categories: field goal percentage .393, 123-313; in three-point field goals attempted 83; three-point field goals made with 20; free throw attempts with 47 for a 1.6 average per game ... places second in the free throw made category with a total of 37 and a 1.3 average ... had a total of 16 blocked shots which put her in third place in that category., is also in third place in defensive boards with 92 for a 3.2 average ... and finishes in the fifth spot in rebounds with a total of 114 for a 3.9 average ... in the MWC finished her sophomore season with a 19th and 16th place finish in scoring in all games and in league play, ended ranked 15th in league games in field goal percentage .399 (67-168), in the assists category ranked seventh and ninth respectively in all contests and in MWC games, placed third and first in the steals category in all games and in MWC contests, and ranked fifth in all games in the assist/turnover ratio category.

**Bonham (Nielson)**

**Season Highs**

**Career Highs**

**Points:**

24 @ CS Fullerton, 12/12/09

27 @ Nevada, 11/18/08

**Rebounds:**

8 vs. Kansas St., 11/27/09

same, once more

**3-PT FG's made:**

9 vs. Air Force, 1/13/10, once more

3 @ UNLV, 2/16/08, once more

**Assists:**

9 vs. Air Force, 1/13/10, once more

same, once more

**Steals:**

3 vs. UVU, 11/13/09

6 vs. Wyoming, 3/04/09, twice more

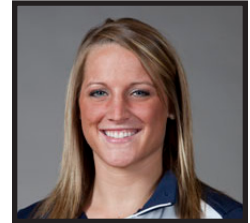
**Blocks:**

5 vs. Utah Valley, 12/08/07

Bonham (Nielson) Stats													
Yr	G/GS	FG-FGA	%	3FG-3FGA	%	FT-FTA	%	Pts.	Reb.	A.	To.	Bl.	St.
08	29/19	74-200	.370	17-58	.293	46-65	.708	211	85	80	95	20	46
09	29/29	123-313	.393	20-83	.241	37-47	.787	303	114	93	69	16	65
10	16/16	74-159	.465	14-40	.350	21-24	.875	183	63	59	45	4	31

**Coriann Wood**  
**Forward**  
**6-1, Junior**  
**Basin City, WA - Cornell HS**

### #23



**At BYU**

**JUNIOR - (2009-10):** led all scorers and picked up new season and career highs in points with 21 in the road win at CSU on 1/16/10 for her ninth season and 18th career double digit outing ... recorded her second double double of the season and career with 17 points and 10 rebounds, has now scored in double figures in a total of eight games this year, 17 overall and five straight, the total boards were team and game highs ... scored 12 points for team and game highs in the home win vs. Nevada on 1/2/10 which mark the seventh and 16th double digit outing of her career and in that same contest was perfect from both the free throw line (2-2) and from behind the arc (2-2) ... picked up new season and career highs in points with 17 vs. Portland on 12/31/09 recording her six double digit outing of the year and her 15th overall, the points were also team and game highs and she had scored 15 of the 17 points in the first half of the game ... scored 12 points in the road game at Utah State on 12/19/09 recording her fifth double figure contest of the season and her 14th overall, was perfect from the free throw line going (6-6) and it was her second consecutive double figure contest of the season to date ... picked up her first double double of her career with 16 points and 10 rebounds in the road game at CS Fullerton on 12/12/09 marking her fourth double digit performance this season and her 13th overall, the 16 points were season and career highs, and of the total points, nine were from three-point range which are season highs ... in the CS Fullerton game also dished out two assists for season highs to date ... led all players grabbing 11 boards in the game at Weber State on 12/9/09 for season and career highs in the rebound category ... grabbed nine boards in the game vs. Hawaii on 12/5/09 which tie for season and career highs ... tied her career-and-season record with two blocks in the game vs. Kansas St., 11/27/09 and also had two steals for season and career highs ... tied for team and game highs in points with 12 at SUU on 11/24/09 for her third double digit outing of the season and her 12th overall, the points are also season highs to date ... scored 11 points in the road game at Washington on 11/18/09 for her second straight double figure contest of the year and 11th in her career ... came off the bench to score 10 points in the home opener vs. UVU on 11/13/09 marking her first double figure contest of the season and her 10th overall ... grabbed a team and game high eight boards in that same game.

**SOPHOMORE - (2008-2009):** Final player notes: played in all games, starting in three vs. SDSU on 2/25/09; at Utah and vs. Wyoming ... scored 13 points in the home win vs. UNLV on 2/21/09, her sixth double digit performance of the year and seventh overall ... grabbed nine boards for team, season, and career-highs vs. AF on 2/4/09 ... tallied six rebounds in each of the last two MWC games, vs. Utah on 1/28/09 and at Wyoming on 1/31/09 ... recorded a team high 13 points in the home game vs. Utah for her seventh double digit contest of the year and her eighth overall, and in that same game dished out new season and career highs in assists with three ... tied season highs in both assists and steals with two each vs. CSU on 1/10/09 ... had two blocks for new season and career highs in that category in the home win vs. CSU on 01/10/09 ... grabbed new season and career highs in the rebound category with eight vs. USC, on 12/06/08 ... recorded her sixth double figure game of the year and seventh career with 10 points in the game at Long Beach St., ... has a total of five double digit scoring performances on the year and six overall with the 13 points scored vs. Utah St., on 12/13/08 ... the points mark three back-to-back double figure games with the 15 vs. Weber St., (which were season and career highs) and 14 vs. USC ... in the home game vs. SUU on 11/28/08 scored 10 points which at that time tied her season high ... in the game at Nevada on 11/18/08 tied her career highs in rebounds with five ... in the home game vs. UConn was perfect from the line 4-4 ... is in second place on the team in rebounds grabbing 4.8 boards per contest ... is in fifth place on the team in points scoring 6.4 per contest ... has the team's best three-point field goal percentage (.330, 30-90) ... led or tied in the rebound category in a total of six contests and in blocked shots in three ... ended the season ranked first in four categories: three-point field goal attempts with 90; three-point field goals made with 30; free throw attempts with 51 for a 1.8 average; free throws made with a total of 37 for a 1.3 average ... places second in two: three-point percentage .333, 30-90; defensive board grabbing 102 for a 3.5 average ... attempted 186 field goals which places her in fourth place in that category ... ranks fifth in three categories: offensive rebounds with 37; assists with 19; steals with 22 ... in the MWC tied for 13th place in the three-point field goal percentage category in all games ... named MWC Academic All-Conference.

Wood	Season Highs	Career Highs
Points:	17 @ UNLV, 1/6/10	same, once more
Rebounds:	11 @ Weber State, 12/9/09	same
3-PT FG's made:	3 @ CS Fullerton, 12/12/09	same, once more
Assists:	2 @ CS Fullerton, 12/12/09	3 vs. Utah, 01/28/09
Steals:		2 vs. CSU, 01/10/09, once more
Blocks:	2 vs. Kansas St., 11/27/09	same, twice more

		Wood Stats									
Yr	G/GS	FG-FGA %	3FG-3FGA %	FT-FTA %	Pts.	Reb.	A.	To.	Bl.	St.	
08	27/1	31-94 .330	10-47 .213	20-22 .909	92	63	7	29	5	7	
09	29/3	60-186 .323	30-90 .333	37-51 .725	187	139	19	43	9	22	
10	16/0	58-133 .436	22-50 .440	28-36 .778	166	94	12	30	12	7	

**Marie Beck**

**Guard**

**5-8, Junior**

**Oxnard, CA - Channel Islands HS**

**#31**



**At BYU**

**JUNIOR - (2009-10):** has played in a total of eight games to date ... in the second road game of the season at Montana State on 11/20/09 scored a three pointer for her first points of the season after playing just two minutes ... played four minutes in the home opener of the year vs. UVU on 11/13/09.

**SOPHOMORE - (2008-2009):** Saw action in three contests during the season; in the game at Long Beach State on 12/20, and the two home MWC games against the Air Force Academy on 2/4/09 and San Diego State on 2/2/09 ... averaged nearly two minutes of playing time in each game.

**FRESHMAN - (2007-08):** Saw action in three games on the year ... received an MWC Scholar Athlete Award.

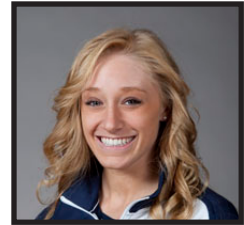
**Before BYU**

School Valedictorian, Ventura County Star Athlete ... AP Scholar ... Top Honors Scholar ... Three-year letterwinner in basketball ... MVP in 2007 ... Athlete of the Year in 2007 ... Second Team All League in 2006 ... First Team All League 2007 ... Second Team All County 2007 ... four-year letterwinner in softball ... three time softball MVP 2005-2007.

		Beck Stats									
Yr	G/GS	FG-FGA %	3FG-3FGA %	FT-FTA %	Pts.	Reb.	A.	To.	Bl.	St.	
08	3/0	0-0 .000	0-1 .000	0-0 .000	0	1	0	0	0	0	
09	3/0	0-1 .000	0-1 .000	1-2 .500	1	2	0	0	0	0	
10	8/0	2-4 .500	1-3 .333	0-0 .000	5	4	1	7	0	1	

**Stephanie Buhler Bates**  
**Forward**  
**6-0, Sophomore**  
**Oregon City, OR - Oregon City HS**

### #21



**At BYU**

**SOPHOMORE - (2009-10):** has played in nine of the 16 games to date including the MWC home opener against Air Force on 1/13/10 ... made her first three pointer of the season at SUU on 11/24/09 ... saw nine minutes of action in the road game at Montana State on 11/20/09 ... played six minutes in the home game vs. UVU on 11/13/09.

**FRESHMAN - (2008-2009):** Final player notes: played in 19 games off the bench ... of those games six were nonconference and 13 were MWC contests ... tied her season and career highs in points with nine at UNLV on 3/10/09 at the 2009 MWC Champs., all coming from three-point range ... tied her season and career highs in treys with three in the game at UNLV on 3/10/09 at the 2009 MWC Champs ... picked up six points in the game at Portland on 01/03/09 ... in that same game had two steals for season and career highs as well ... scored two points in the game at Long Beach St., ... averaged 5.6 minutes of playing time, with 16 minutes being the most at Portland during the nonconference schedule and 13 minutes at UNLV at the MWC Championships ... ranks fifth in three-point field goals made with 12 ... finishes in sixth place on the team in the three-point percentage category .308, 12-39 ... recorded a total of 45 points for a 2.4 average ... was perfect from the free throw line in a total of three contests ... made three three-pointers in two contests vs. TCU and at UNLV in the MWC Championships.

**FRESHMAN - (2007-2008):** Redshirt

**Before BYU**

Four-year letterwinner in basketball ... competed one year at Sandy HS where she garnered Honorable Mention honors. At Oregon City HS ...team was Three Rivers League Champions all three seasons ... named Second Team All- League her senior year ... ranks third all time in three-point shooting ... is also tops in the free throw category ... garnered Second Team All League honors during the 2006-07 season ... ranks second in state as a three-point shooter ... two-time Honorable Mention All State ... named Oregonian Athlete of the Week ... named to the All-Tournament Team at the Delaware and the Gillett, Wyoming Classics ... in state high school competition, the 2004-05 team finished third ... in 2005-06 team finished second and in 2006-07 team ended the year in sixth place ... Played on two club teams (Triple Threat Oregon two years) ... and on (Clutch Players for three years)

**Bates**

**Season Highs**

**Career Highs**

**Points:**

9 @ UNLV, 03/10/09, once more

**Rebounds:**

1 @ Long Beach St., 12/20/08

**3-PT FG's made:**

3 @ UNLV, 03/10/09, once more

**Assists:**

1 vs. UConn on 11/25/08

**Steals:**

2 @ Portland, 01/03/09

		Bates Stats									
Yr	G/GS	FG-FGA %	3FG-3FGA %	FT-FTA %	Pts.	Reb.	A.	To.	Bl.	St.	
09	19/0	15-43 .349	12-39 .308	3-3 1.000	45	3	8	11	3	6	
10	9/0	2-10 .200	2-10 .200	1-2 .500	7	5	1	3	0	1	



**Dani Peterson**  
**Forward**  
**6-1, Sophomore**  
**Salt Lake City, UT - Skyline HS**

**#32**



**At BYU**

**SOPHOMORE - (2009-10):** has played in all 15 games so far this year ... had one block in the road contest at Utah State on 12/19/09 ... grabbed season and career highs in rebounds with nine at Montana State on 11/20/09 and also scored eight points after coming off the bench for 13 minutes of playing time ... in the first road game of the season at Washington on 11/13/09 saw eight minutes of action where she grabbed one rebounds ... came off the bench to score 10 points in the home opener on 11/13/09 vs. UVU marking her first double figure contest of her career and of the season ... the 10 points scored vs. UVU mark season and career highs.

**FRESHMAN - (2008-2009):** Final player notes: played in 16 games off the bench, of those contests eight were nonconference and eight were MWC contests ... came off the bench to score eight points, all in the first half in the home win vs. UNLV on 2/21/09 for season and career bests in the points category ... in that same game recorded two blocks for season and career highs ... scored four points for her fourth four-point performance of the year at SDSU on 01/24/09 ... grabbed a new season and career high five boards at Portland on 1/03/09 ... tied her season best four points at Long Beach St., on 12/20/08 ... picked up four points and four in the home opener against Oregon on 11/21/08 ... averaged 6.8 minutes of playing time, playing a season high 13 minutes in three contests, at SDSU; vs. UNLV and vs. SDSU ... recorded a total of 32 points and 24 rebounds ... was perfect from the line 2-2 in three games at Long Beach St., vs. CSU and at SDSU ... named MWC Academic All-Conference.

**Before BYU:** Four-year letterwinner in basketball ... two-time team MVP ... four-year starter ... team captain in 2007-08 ... named 2008 Utah Gatorade Player of the Year ... team won 5A Championship in 2006 and 2008 and finished second in 2007 ... named 5A Tournament MVP ... current state record-holder in individual field goal percentage with 64.8 (140-216) in 2006-07 season ... three-time Salt Lake Tribune 5A First Team All State ... two-time 5A All Tournament Team ... 2008 Deseret Morning News 5A MVP ... two-time Deseret Morning News Second Team All State ... 2008 McDonald's All-America nominee ... 2007 End of the Trail All-Tournament Team ... 2007 Adidas All-American Camp All-Star ... 2005 Pacific Coast Shootout All-Tournament Team ... played for the Salt Lake Metro Basketball Club in 2006 and 2007 and with the Utah Storm Basketball Club in 2005 ... three-year letterwinner in soccer ... team captain in 2007-08 season.

Peterson	Season Highs	Career Highs
Points:	10 vs. UVU, 11/13/09	same
Rebounds:	9 @ Montana State, 11/20/09	same
3-PT FG's made:		
Assists:		
Steals:		
Blocks:	1 @ Utah State, 12/19/09	2 vs. UNLV, 2/21/09

		Peterson Stats											
Yr	G/GS	FG-FGA	%	3FG-3FGA	%	FT-FTA	%	Pts.	Reb.	A.	To.	Bl.	St.
09	16/0	11-36	.306	0-2	.000	10-14	.714	32	24	0	7	5	3
10	16/0	25-59	.424	0-10	.000	6-14	.429	56	37	3	12	7	4

**Kristen Riley**

**Forward**

**6-3, Sophomore**

**San Clemente, CA - San Clemente HS**

**#35**



**At BYU**

**SOPHOMORE - (2009-10):** grabbed seven boards in the league game at Wyoming on 1/19/10 to lead the team for the second straight game in the rebound category ... led the team in rebounds with nine in the road win at CSU on 1/16/10 which also tie for season highs in that category ... recorded new season and career highs in points with 17 in the home win over Air Force on 1/13/10 which mark her sixth season and career double figure outing and she also tied her season and career high in steals with three... with the 10 points scored in the home win over Nevada on 1/2/10 her overall points total is at 98 which surpasses the total of 97 points scored her freshman season, while the points mark her third season and career double figure outing ... grabbed season and career highs in the rebound category with nine in the game at Utah State on 12/19/09 which were also team highs and in that same contest tallied 11 points ... scored 15 points vs. San Francisco on 12/4/09 for her second best scoring output of the year, the points were also team and game highs and mark her second double figure game of the season and her career ... dished out three assists vs. Kansas St., on 11/27/09 for season and career highs ... at SUU on 11/24/09 recorded season and career highs in steals with three ... tallied 12 points at Montana State on 11/20/09, also grabbed six rebounds and went (.750, 6-8) from the free throw line ... scored six points and grabbed three boards in the road game at Washington on 11/18/09 ... started in the first contest of the season vs. UVU on 11/13/09 making it her second start overall ... scored eight points and grabbed six rebounds in the home opener vs. UVU.

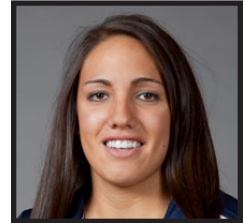
**FRESHMAN - (2008-2009):** Final player notes: played in all games and started in her first college game at AFA on 3/7/09 ... Named the MWC Preseason Freshman of the Year in the Preseason 2008-09 MWC Poll ... at TCU on 1/13/09 tied a season high in assists with two ... grabbed a team high eight rebounds @ SDSU on 1/24/09 for new season and career highs ... had seven boards at Portland on 01/03/09 ... has had four games where she has grabbed five rebounds ... in the home game vs. SUU on 11/28/08 scored nine points for new season and career highs, was 4-6 from the field ... in the home game vs. Oregon on 11/21/08 scored four points ... ranks sixth on the team in the rebound category grabbing 3.7 boards per game ... finished her freshman season leading or tying in the rebound category in a total of six games ... led or tied in blocked shots in nine games on the season ... ranks second in blocked shots with 17 ... places third in the offensive rebound category grabbing a total of 48 for a 1.7 average ... was perfect from the free throw line in three contests ... finished the year with a total of 105 rebounds and 97 points ... in the MWC placed 15th in the blocks category for all games.

Riley	Season Highs	Career Highs
<b>Points:</b>	17 vs. Air Force, 1/13/10	same
<b>Rebounds:</b>	9 @ Colorado St., 1/16/10, once more	same
<b>3-PT FG's made:</b>	2 vs. UVU, 11/13/09	same
<b>Assists:</b>	3 vs. Kansas St., 11/27/09	same
<b>Steals:</b>	3 vs. Air Force, 1/13/10, once more	same, once more
<b>Blocks:</b>		3 @ SDSU, 01/24/09

		Riley Stats											
Yr	G/GS	FG-FGA	%	3FG-3FGA	%	FT-FTA	%	Pts.	Reb.	A.	To.	Bl.	St.
09	29/1	34-105	.324	5-23	.217	24-42	.571	97	105	18	44	17	20
10	16/16	54-114	.474	5-26	.192	23-45	.511	136	82	22	29	11	17

**Alexis Kaufusi**  
**Forward/Center**  
**6-1, Freshman**  
**Provo, UT - Timpview HS**

### #10



**At BYU**

**FRESHMAN - (2009-10):** recorded her sixth season and career double figure game with 11 points in the MWC game at Wyoming on 1/19/10 ... in the first league game of the season at UNLV on 1/6/10 scored 10 points for her fifth season and career double digit output ... scored in double figures for the fourth time this season with 12 points at CS Fullerton on 12/12/09 which once again tie for season and career highs in points ... tied her season and career high in points with 12 vs. San Francisco on 12/4/09 marking her third double figure game of the season and her career ... recorded her first double double of her career and of the season with 12 points and 11 rebounds at SUU on 11/24/09, the 12 points tied for team and game highs ... scored 12 points and grabbed nine boards in the game at Montana State on 11/20/09 recording season and career highs in both categories ... picked up season and career highs in points with five and in rebounds with three at Washington on 11/18/09 ... came off the bench to play in her first collegiate game vs. UVU on 11/13/09 in which she scored four points.

**(2008-09):** Redshirt

**Before BYU:** Four-year letterwinner in basketball ... Region Champs in 2007 and 2008 and was undefeated in 2008 ... two-time team MVP ... team captain ... two-time All-Region honoree ... two-time All-Valley accolades ... First Team All-State in 2007 and 2008 ... named state MVP... two-year letterwinner in soccer ... one year letterwinner in softball ... academic high school Honor Roll ... played three years for the Salt Lake Metro Club Team, 2006-2008.

Kaufusi	Season Highs	Career Highs
Points:	12 @ CS Fullerton, 12/12/09, three more	same, three more
Rebounds:	11 @ SUU, 11/24/09	same
3-PT FG's made:		
Assists:	2 @ Montana State, 11/20/09	same
Steals:		
Blocks:	1 @ SUU, 11/24/09	same

Kaufusi Stats													
Yr	G/GS	FG-FGA	%	3FG-3FGA	%	FT-FTA	%	Pts.	Reb.	A.	To.	Bl.	St.
10	16/0	49-96	.510	0-0	.000	21-36	.583	119	87	5	34	7	9

**THE STAT CREW SYSTEM**  
**Brigham Young University Combined Team Statistics (as of Jan 19, 2010)**  
**All games**

<b>RECORD:</b>	<b>OVERALL</b>	<b>HOME</b>	<b>AWAY</b>	<b>NEUTRAL</b>
ALL GAMES	12-4	4-1	6-3	2-0
CONFERENCE	3-1	1-0	2-1	0-0
NON-CONFERENCE	9-3	3-1	4-2	2-0

##	Player	gp-gs	min	Total		3-Point		F-Throw		Rebounds				pf	dq	a	to	blk	stl	pts	avg	
				fg-fga	fg%	3fg-fga	3fg%	ft-fa	ft%	off	def	tot	avg									
22	BONHAM, Mindy	16-16	508	31.8	74-159	.465	14-40	.350	21-24	.875	24	39	63	3.9	31	0	59	45	4	31	183	11.4
23	WOOD, Coriann	16-0	358	22.4	58-133	.436	22-50	.440	28-36	.778	33	61	94	5.9	48	1	12	30	12	7	166	10.4
03	FOREMAN, Jazmine	16-16	472	29.5	56-111	.505	25-49	.510	25-35	.714	12	40	52	3.3	39	1	57	42	2	34	162	10.1
35	RILEY, Kristen	16-16	341	21.3	54-114	.474	5-26	.192	23-45	.511	30	52	82	5.1	34	0	22	29	11	17	136	8.5
33	HALL, Haley	16-16	497	31.1	47-132	.356	29-78	.372	6-10	.600	15	37	52	3.3	35	1	74	29	2	40	129	8.1
10	KAUFUSI, Alexis	16-0	245	15.3	49-96	.510	0-0	.000	21-36	.583	31	56	87	5.4	29	0	5	34	7	9	119	7.4
45	MOEAKI, Keilani	16-16	298	18.6	34-78	.436	5-12	.417	10-22	.455	22	19	41	2.6	28	0	16	31	3	7	83	5.2
32	PETERSON, Dani	16-0	159	9.9	25-59	.424	0-10	.000	6-14	.429	15	22	37	2.3	23	0	3	12	7	4	56	3.5
04	PARKER, Kim	8-0	102	12.8	8-19	.421	4-11	.364	4-7	.571	7	11	18	2.3	11	0	5	10	1	5	24	3.0
13	JUDKINS, Jaime	12-0	104	8.7	7-14	.500	4-11	.364	3-4	.750	7	5	12	1.0	6	0	11	4	0	6	21	1.8
01	JACKSON, Jenteal	6-0	40	6.7	2-10	.200	1-5	.200	3-8	.375	2	4	6	1.0	6	0	4	2	0	3	8	1.3
21	BATES, Stephanie	9-0	65	7.2	2-10	.200	2-10	.200	1-2	.500	2	3	5	0.6	6	0	1	3	0	1	7	0.8
31	BECK, Marie	8-0	20	2.5	2-4	.500	1-3	.333	0-0	.000	3	1	4	0.5	2	0	1	7	0	1	5	0.6
55	LEACH, Megan	6-0	41	6.8	0-10	.000	0-4	.000	2-2	1.000	0	9	9	1.5	2	0	1	2	5	2	2	0.3
Team											30	36	66				3					
Total.....		16	3250		418-949	.440	112-309	.362	153-245	.624	233	395	628	39.2	300	3	271	283	54	167	1101	68.8
Opponents.....		16	3250		312-836	.373	66-226	.292	204-298	.685	191	342	533	33.3	235	-	157	315	27	105	894	55.9

<b>TEAM STATISTICS</b>	<b>BY</b>	<b>OPP</b>	<b>Date</b>	<b>Opponent</b>	<b>Score</b>	<b>Att.</b>
SCORING	1101	894	11-13-09	UT VALLEY WOLVERINES	W 73-51	954
Points per game	68.8	55.9	11/18/09	at Washington	L 66-67	1773
Scoring margin	+12.9	-	11/20/09	at Montana State	W 79-54	1627
FIELD GOALS-ATT	418-949	312-836	11/24/09	at Southern Utah	W 72-39	438
Field goal pct	.440	.373	11/27/09	KANSAS STATE	L 62-65	937
3 POINT FG-ATT	112-309	66-226	12/04/09	vs USF	W 72-60	73
3-point FG pct	.362	.292	12/5/09	vs UH	W 81-44	65
3-pt FG made per game	7.0	4.1	12-09-09	at Weber State	Lo2 61-62	547
FREE THROWS-ATT	153-245	204-298	12/12/09	at Cal State Fullerton	W 75-72	145
Free throw pct	.624	.685	12/19/09	at Utah State	W 61-48	594
F-Throws made per game	9.6	12.8	12-31-09	PORTLAND PILOTS	W 69-57	627
REBOUNDS	628	533	1-02-10	NEVADA WOLFPACK	W 61-41	532
Rebounds per game	39.2	33.3	*H 01/06/10	at UNLV	W 71-61	749
Rebounding margin	+5.9	-	* 01-13-10	AIR FORCE ACADEMY	W 77-46	739
ASSISTS	271	157	* 01/16/10	at Colorado State	W 67-58	1210
Assists per game	16.9	9.8	* 1/19/10	at Wyoming Cowgirls	L 54-69	3123
TURNOVERS	283	315	* = Conference game			
Turnovers per game	17.7	19.7				
Turnover margin	+2.0	-				
Assist/turnover ratio	1.0	0.5				
STEALS	167	105				
Steals per game	10.4	6.6				
BLOCKS	54	27				
Blocks per game	3.4	1.7				
ATTENDANCE	3789	10344				
Home games-Avg/Game	5-758	9-1134				
Neutral site-Avg/Game	-	2-69				

<b>Score by Periods</b>	<b>1st</b>	<b>2nd</b>	<b>OT</b>	<b>OT2</b>	<b>Totals</b>
Brigham Young Univer	566	523	6	6	1101
Opponents	401	480	6	7	894

**THE STAT CREW SYSTEM**  
**Brigham Young University Combined Team Statistics (as of Jan 19, 2010)**  
**Conference games**

<b>RECORD:</b>	<b>OVERALL</b>	<b>HOME</b>	<b>AWAY</b>	<b>NEUTRAL</b>
ALL GAMES	3-1	1-0	2-1	0-0
CONFERENCE	3-1	1-0	2-1	0-0
NON-CONFERENCE	0-0	0-0	0-0	0-0

##	Player	gp-gs	min	avg	Total		3-Point		F-Throw		Rebounds				pf	dq	a	to	blk	stl	pts	avg
					fg-fga	fg%	3fg-fga	3fg%	ft-fa	ft%	off	def	tot	avg								
03	FOREMAN,Jazmine	4-4	132	33.0	20-36	.556	10-19	.526	8-9	.889	2	12	14	3.5	12	1	14	8	1	10	58	14.5
23	WOOD,Coriann	4-0	100	25.0	16-38	.421	6-15	.400	8-10	.800	8	14	22	5.5	9	0	6	6	1	5	46	11.5
22	BONHAM,Mindy	4-4	144	36.0	16-37	.432	2-8	.250	4-6	.667	3	9	12	3.0	6	0	23	10	0	7	38	9.5
35	RILEY,Kristen	4-4	96	24.0	16-33	.485	0-5	.000	4-6	.667	10	13	23	5.8	8	0	5	5	1	7	36	9.0
10	KAUFUSI, Alexis	4-0	65	16.3	15-27	.556	0-0	.000	5-9	.556	4	14	18	4.5	8	0	1	7	2	1	35	8.8
33	HALL, Haley	4-4	136	34.0	12-37	.324	6-18	.333	2-2	1.000	5	10	15	3.8	9	0	21	9	2	8	32	8.0
45	MOEAKI,Keilani	4-4	67	16.8	5-14	.357	1-2	.500	2-4	.500	2	5	7	1.8	7	0	3	7	1	2	13	3.3
32	PETERSON,Dani	4-0	32	8.0	4-7	.571	0-2	.000	1-2	.500	2	1	3	0.8	7	0	0	2	2	1	9	2.3
31	BECK,Marie	1-0	4	4.0	1-1	1.000	0-0	.000	0-0	.000	0	0	0	0.0	0	0	1	0	0	0	2	2.0
21	BATES,Stephanie	1-0	5	5.0	0-1	.000	0-1	.000	0-0	.000	0	0	0	0.0	0	0	0	0	0	0	0	0.0
13	JUDKINS,Jaimie	3-0	14	4.7	0-1	.000	0-1	.000	0-0	.000	1	0	1	0.3	0	0	2	0	0	4	0	0.0
55	LEACH,Megan	1-0	5	5.0	0-0	.000	0-0	.000	0-0	.000	0	1	1	1.0	0	0	1	1	1	0	0	0.0
Team											9	9	18				1					
Total.....		4	800		105-232	.453	25-71	.352	34-48	.708	46	88	134	33.5	66	1	77	56	11	45	269	67.2
Opponents.....		4	800		85-207	.411	24-69	.348	40-62	.645	52	89	141	35.2	55	-	50	82	4	21	234	58.5

**TEAM STATISTICS**

	<b>BY</b>	<b>OPP</b>
SCORING	269	234
Points per game	67.2	58.5
Scoring margin	+8.8	-
FIELD GOALS-ATT	105-232	85-207
Field goal pct	.453	.411
3 POINT FG-ATT	25-71	24-69
3-point FG pct	.352	.348
3-pt FG made per game	6.3	6.0
FREE THROWS-ATT	34-48	40-62
Free throw pct	.708	.645
F-Throws made per game	8.5	10.0
REBOUNDS	134	141
Rebounds per game	33.5	35.2
Rebounding margin	-1.7	-
ASSISTS	77	50
Assists per game	19.3	12.5
TURNOVERS	56	82
Turnovers per game	14.0	20.5
Turnover margin	+6.5	-
Assist/turnover ratio	1.4	0.6
STEALS	45	21
Steals per game	11.3	5.3
BLOCKS	11	4
Blocks per game	2.8	1.0
ATTENDANCE	739	5082
Home games-Avg/Game	1-739	3-1694
Neutral site-Avg/Game	-	0-0

<b>Date</b>	<b>Opponent</b>		<b>Score</b>	<b>Att.</b>
*H 01/06/10	at UNLV	w	71-61	749
* 01-13-10	AIR FORCE ACADEMY	w	77-46	739
* 01/16/10	at Colorado State	w	67-58	1210
* 1/19/10	at Wyoming Cowgirls	L	54-69	3123

\* = Conference game

**Score by Periods**

	<b>1st</b>	<b>2nd</b>	<b>Totals</b>
Brigham Young Univer	141	128	269
Opponents	96	138	234

**THE STAT CREW SYSTEM**  
**Brigham Young University Team Game-by-Game (as of Jan 21, 2010)**  
**All games**

**TEAM STATISTICS**

Opponent	Date	Score		Total		3-Pointers		Free throws		Rebounds				pf	a	t/o	blk	stl	pts	avg
				fg-fga	pct	3fg-fga	pct	ft-fa	pct	off	def	tot	avg							
UT VALLEY WOLVERINES	11-13-09	73-51	W	29-74	.392	9-30	.300	6-13	.462	26	20	46	46.0	25	21	14	4	12	73	73.0
at Washington	11/18/09	66-67	L	21-42	.500	10-18	.556	14-26	.538	8	24	32	39.0	26	12	31	0	9	66	69.5
at Montana State	11/20/09	79-54	W	25-51	.490	8-14	.571	21-36	.583	15	35	50	42.7	19	12	18	3	10	79	72.7
at Southern Utah	11/24/09	72-39	W	30-65	.462	7-18	.389	5-7	.714	12	32	44	43.0	16	12	17	7	20	72	72.5
KANSAS STATE	11/27/09	62-65	L	24-60	.400	7-21	.333	7-12	.583	20	20	40	42.4	18	13	17	3	7	62	70.4
vs USF	12/04/09	72-60	W	29-59	.492	6-19	.316	8-11	.727	12	25	37	41.5	16	21	17	2	11	72	70.7
vs UH	12/5/09	81-44	W	30-60	.500	12-28	.429	9-14	.643	17	27	44	41.9	20	23	18	2	8	81	72.1
at Weber State	12-09-09	61-62	Lot	24-67	.358	3-14	.214	10-22	.455	22	25	47	42.5	26	11	28	5	11	61	70.8
at Cal State Fullerton	12/12/09	75-72	W	27-55	.491	7-16	.438	14-19	.737	13	28	41	42.3	16	15	22	4	3	75	71.2
at Utah State	12/19/09	61-48	W	23-57	.404	5-18	.278	10-17	.588	15	27	42	42.3	20	18	18	2	9	61	70.2
PORTLAND PILOTS	12-31-09	69-57	W	30-74	.405	6-24	.250	3-5	.600	15	22	37	41.8	15	20	6	4	8	69	70.1
NEVADA WOLFPACK	1-02-10	61-41	W	21-53	.396	7-18	.389	12-15	.800	12	22	34	41.2	17	16	21	7	14	61	69.3
at UNLV	01/06/10	71-61	W	27-65	.415	8-26	.308	9-12	.750	15	25	40	41.1	15	20	11	0	7	71	69.5
AIR FORCE ACADEMY	01-13-10	77-46	W	33-55	.600	8-17	.471	3-7	.429	8	19	27	40.1	12	29	13	8	18	77	70.0
at Colorado State	01/16/10	67-58	W	23-54	.426	8-16	.500	13-19	.684	12	23	35	39.7	17	16	21	1	12	67	69.8
at Wyoming Cowgirls	1/19/10	54-69	L	22-58	.379	1-12	.083	9-10	.900	11	21	32	39.2	22	12	11	2	8	54	68.8
Brigham Young University		1101		418-949	.440	112-309	.362	153-245	.624	233	395	628	39.2	300	271	283	54	167	1101	68.8
Opponents		894		312-836	.373	66-226	.292	204-298	.685	191	342	533	33.3	235	157	315	27	105	894	55.9

Games played: 16  
Points/game: 68.8  
FG Pct: 44.0  
3FG Pct: 36.2  
FT Pct: 62.4

Rebounds/game: 39.2  
Assists/game: 16.9  
Turnovers/game: 17.7  
Assist/turnover ratio: 1.0  
Steals/game: 10.4  
Blocks/game: 3.4

**THE STAT CREW SYSTEM**  
**Brigham Young University Team Game-by-Game Comparison (as of Jan 21, 2010)**  
**All games**

Opponent	1st	2nd	Score	Mar	Total FG	FG Pct	3-Pointers	3FG Pct	Free Throws	FT Pct	Rebounds	Assist	T/Over	Block	Steal	Fouls
UT VALLEY WOLVERINES	45/26	28/25	73-51	+22	29-74/15-41	.392/.366	9-30/1-11	.300/.091	6-13/20-23	.462/.870	46/32 +14	21/4	14/22	4/1	12/2	25/15
Washington	34/30	32/37	66-67	(1)	21-42/23-58	.500/.397	10-18/2-6	.556/.333	14-26/19-27	.538/.704	32/30 +2	12/12	31/22	0/4	9/12	26/22
Montana State	38/29	41/25	79-54	+25	25-51/22-70	.490/.314	8-14/3-21	.571/.143	21-36/7-14	.583/.500	50/36 +14	12/7	18/16	3/1	10/9	19/22
Southern Utah	48/24	24/15	72-39	+33	30-65/14-50	.462/.280	7-18/4-15	.389/.267	5-7/7-13	.714/.538	44/33 +11	12/9	17/25	7/5	20/7	16/6
KANSAS STATE	25/30	37/35	62-65	(3)	24-60/23-49	.400/.469	7-21/10-19	.333/.526	7-12/9-12	.583/.750	40/26 +14	13/9	17/15	3/2	7/5	18/16
USF	41/20	31/40	72-60	+12	29-59/22-51	.492/.431	6-19/6-13	.316/.462	8-11/10-21	.727/.476	37/30 +7	21/12	17/16	2/1	11/8	16/11
UH	48/16	33/28	81-44	+37	30-60/16-54	.500/.296	12-28/3-14	.429/.214	9-14/9-17	.643/.529	44/32 +12	23/9	18/20	2/3	8/6	20/15
Weber State	17/23	32/26	61-62	(1)	24-67/20-45	.358/.444	3-14/1-5	.214/.200	10-22/21-30	.455/.700	47/31 +16	11/13	28/22	5/0	11/8	26/16
Cal State Fullerton	28/29	47/43	75-72	+3	27-55/24-62	.491/.387	7-16/7-20	.438/.350	14-19/17-20	.737/.850	41/28 +13	15/8	22/9	4/0	3/6	16/20
Utah State	30/31	31/17	61-48	+13	23-57/17-46	.404/.370	5-18/1-9	.278/.111	10-17/13-22	.588/.591	42/30 +12	18/9	18/19	2/2	9/8	20/15
PORTLAND PILOTS	40/29	29/28	69-57	+12	30-74/19-55	.405/.345	6-24/3-10	.250/.300	3-5/16-18	.600/.889	37/46 (9)	20/7	6/19	4/4	8/3	15/8
NEVADA WOLFPACK	31/18	30/23	61-41	+20	21-53/12-48	.396/.250	7-18/1-14	.389/.071	12-15/16-19	.800/.842	34/38 (4)	16/8	21/28	7/0	14/10	17/14
UNLV	32/22	39/39	71-61	+10	27-65/22-53	.415/.415	8-26/5-18	.308/.278	9-12/12-17	.750/.706	40/36 +4	20/12	11/17	0/2	7/2	15/14
AIR FORCE ACADEMY	41/22	36/24	77-46	+31	33-55/19-53	.600/.358	8-17/3-9	.471/.333	3-7/5-8	.429/.625	27/33 (6)	29/9	13/22	8/0	18/4	12/12
Colorado State	38/25	29/33	67-58	+9	23-54/23-49	.426/.469	8-16/4-15	.500/.267	13-19/8-14	.684/.571	35/30 +5	16/12	21/26	1/1	12/10	17/17
Wyoming Cowgirls	30/27	24/42	54-69	(15)	22-58/21-52	.379/.404	1-12/12-27	.083/.444	9-10/15-23	.900/.652	32/42 (10)	12/17	11/17	2/1	8/5	22/12

Note: Game totals are displayed in the format TEAM/OPPONENT for each category

**THE STAT CREW SYSTEM**  
**Brigham Young University Game-by-Game Highs (as of Jan 21, 2010)**  
**All games**

<b>Opponent</b>	<b>Date</b>	<b>Score</b>	<b>Points</b>	<b>Rebounds</b>	<b>Assists</b>	<b>Steals</b>	<b>Blocked shots</b>
UT VALLEY WOLVERINES	11-13-09	73-51	14-BONHAM, Mindy MOEAKI, Keilani	8-WOOD, Coriann	8-HALL, Haley	3-BONHAM, Mindy	2-RILEY, Kristen
at Washington	11/18/09	66-67	14-HALL, Haley	5-WOOD, Coriann HALL, Haley	4-HALL, Haley	4-HALL, Haley	None
at Montana State	11/20/09	79-54	12-HALL, Haley KAUFUSI, Alexis RILEY, Kristen	9-PETERSON, Dani KAUFUSI, Alexis	3-FOREMAN, Jazmin	2-PARKER, Kim FOREMAN, Jazmin BONHAM, Mindy	2-RILEY, Kristen
at Southern Utah	11/24/09	72-39	12-WOOD, Coriann KAUFUSI, Alexis	11-KAUFUSI, Alexis	3-BONHAM, Mindy HALL, Haley	5-HALL, Haley	2-RILEY, Kristen
KANSAS STATE	11/27/09	62-65	13-BONHAM, Mindy	8-BONHAM, Mindy KAUFUSI, Alexis	4-HALL, Haley FOREMAN, Jazmin	2-HALL, Haley BONHAM, Mindy RILEY, Kristen	2-WOOD, Coriann
vs USF	12/04/09	72-60	15-RILEY, Kristen	7-KAUFUSI, Alexis	5-FOREMAN, Jazmin	3-BONHAM, Mindy KAUFUSI, Alexis HALL, Haley	1-WOOD, Coriann MOEAKI, Keilani
vs UH	12/5/09	81-44	21-FOREMAN, Jazmi	9-WOOD, Coriann	4-FOREMAN, Jazmin HALL, Haley JUDKINS, Jaime	5-FOREMAN, Jazmin	1-WOOD, Coriann LEACH, Megan
at Weber State	12-09-09	61-62	18-BONHAM, Mindy	11-WOOD, Coriann	7-HALL, Haley	6-FOREMAN, Jazmin	2-RILEY, Kristen
at Cal State Fullerton	12/12/09	75-72	24-BONHAM, Mindy	10-WOOD, Coriann	5-HALL, Haley	1-MOEAKI, Keilani BONHAM, Mindy HALL, Haley	2-BONHAM, Mindy
at Utah State	12/19/09	61-48	12-BONHAM, Mindy WOOD, Coriann	9-RILEY, Kristen	7-BONHAM, Mindy	4-HALL, Haley	1-PETERSON, Dani RILEY, Kristen
PORTLAND PILOTS	12-31-09	69-57	17-WOOD, Coriann	7-RILEY, Kristen	6-FOREMAN, Jazmin HALL, Haley	3-HALL, Haley	2-KAUFUSI, Alexis
NEVADA WOLFPACK	1-02-10	61-41	12-WOOD, Coriann	6-HALL, Haley	6-FOREMAN, Jazmin	4-HALL, Haley	2-BONHAM, Mindy WOOD, Coriann PETERSON, Dani
at UNLV	01/06/10	71-61	19-FOREMAN, Jazmin	10-WOOD, Coriann	9-BONHAM, Mindy	2-BONHAM, Mindy RILEY, Kristen HALL, Haley	None
AIR FORCE ACADEMY	01-13-10	77-46	19-FOREMAN, Jazmin	5-KAUFUSI, Alexis	9-BONHAM, Mindy	4-JUDKINS, Jaime FOREMAN, Jazmine	2-KAUFUSI, Alexis HALL, Haley
at Colorado State	01/16/10	67-58	21-WOOD, Coriann	9-RILEY, Kristen	6-FOREMAN, Jazmin	4-FOREMAN, Jazmin	1-PETERSON, Dani
at Wyoming Cowgirls	1/19/10	54-69	11-KAUFUSI, Alexis HALL, Haley	7-RILEY, Kristen	3-FOREMAN, Jazmin HALL, Haley	3-HALL, Haley	1-FOREMAN, Jazmin RILEY, Kristen



**THE STAT CREW SYSTEM**  
**Brigham Young University Points-Rebounds-Assists (as of Jan 21, 2010)**  
**All games**

Opponent	Date	Score		01	03	4	10	13	21	22
				JACKSON,JE	FOREMAN,JA	PARKER,KIM	KAUFUSI,AL	JUDKINS,JA	BATES,STEP	BONHAM,MIN
UT VALLEY WOLVERINES	11-13-09	73-51	w	2-1-2	7-1-2	0-3-0	4-1-0	3-3-1	1-1-1	14-1-2
at Washington	11/18/09	66-67	L	3-0-0	1-2-1	5-1-0	5-3-1	DNP	DNP	10-4-3
at Montana State	11/20/09	79-54	w	1-1-0	4-4-3	3-4-1	12-9-2	6-1-0	0-2-0	11-5-2
at Southern Utah	11/24/09	72-39	w	0-1-1	7-3-2	5-1-1	12-11-0	5-0-0	3-0-0	9-4-3
KANSAS STATE	11/27/09	62-65	L	DNP	11-6-4	3-1-0	9-8-0	DNP	DNP	13-8-3
vs USF	12/04/09	72-60	w	0-1-0	7-4-5	3-2-1	12-7-1	0-1-1	DNP	14-4-3
vs UH	12/5/09	81-44	w	2-2-1	21-1-4	5-5-2	2-7-0	3-3-4	3-0-0	5-1-3
at Weber State	12-09-09	61-62	L	DNP	11-6-2	0-1-0	2-3-0	DNP	DNP	18-6-0
at Cal State Fullerton	12/12/09	75-72	w	DNP	8-1-2	DNP	12-6-0	0-1-0	0-0-0	24-6-4
at Utah State	12/19/09	61-48	w	DNP	9-4-6	DNP	2-4-0	0-2-1	0-1-0	12-4-7
PORTLAND PILOTS	12-31-09	69-57	w	DNP	9-3-6	DNP	6-6-0	0-0-2	0-0-0	13-4-3
NEVADA WOLFPACK	1-02-10	61-41	w	DNP	9-3-6	DNP	6-4-0	4-0-0	0-1-0	2-4-3
at UNLV	01/06/10	71-61	w	DNP	19-3-3	DNP	10-3-1	0-0-0	DNP	11-5-9
AIR FORCE ACADEMY	01-13-10	77-46	w	DNP	19-2-2	DNP	6-5-0	0-1-2	0-0-0	8-4-9
at Colorado State	01/16/10	67-58	w	DNP	12-3-6	DNP	8-7-0	0-0-0	DNP	11-3-3
at Wyoming Cowgirls	1/19/10	54-69	L	DNP	8-6-3	DNP	11-3-0	DNP	DNP	8-0-2

Opponent	Date	Score		23	31	32	33	35	45	55
				WOOD,CORIA	BECK,MARIE	PETERSON,D	HALL,HALEY	RILEY,KRIS	MOEAKI,KEI	LEACH,MEGA
UT VALLEY WOLVERINES	11-13-09	73-51	w	10-8-1	0-1-0	10-3-0	0-1-8	8-6-2	14-4-2	0-3-0
at Washington	11/18/09	66-67	L	11-5-1	DNP	0-1-0	14-5-4	6-3-1	11-2-1	DNP
at Montana State	11/20/09	79-54	w	5-5-0	3-0-0	8-9-1	12-1-1	12-6-0	2-0-2	0-1-0
at Southern Utah	11/24/09	72-39	w	12-7-0	0-1-0	4-3-2	7-1-3	6-2-0	2-4-0	0-1-0
KANSAS STATE	11/27/09	62-65	L	3-4-0	DNP	2-0-0	10-4-4	9-1-1	2-2-1	DNP
vs USF	12/04/09	72-60	w	7-2-1	DNP	4-5-0	8-2-4	15-5-3	2-1-2	DNP
vs UH	12/5/09	81-44	w	11-9-0	0-1-0	8-3-0	9-1-4	5-3-3	5-1-2	2-2-0
at Weber State	12-09-09	61-62	L	4-11-0	DNP	2-3-0	3-2-7	10-5-2	11-7-0	DNP
at Cal State Fullerton	12/12/09	75-72	w	16-10-2	DNP	0-1-0	6-4-5	4-7-2	5-1-0	DNP
at Utah State	12/19/09	61-48	w	12-2-0	0-0-0	0-3-0	7-5-3	11-9-0	8-6-1	0-1-0
PORTLAND PILOTS	12-31-09	69-57	w	17-6-1	0-0-0	8-1-0	10-5-6	4-7-1	2-2-1	DNP
NEVADA WOLFPACK	1-02-10	61-41	w	12-3-0	0-1-0	1-2-0	11-6-4	10-5-2	6-4-1	DNP
at UNLV	01/06/10	71-61	w	17-10-0	DNP	0-0-0	8-5-6	6-5-1	0-1-0	DNP
AIR FORCE ACADEMY	01-13-10	77-46	w	6-2-3	2-0-1	7-2-0	8-2-7	17-2-2	4-2-2	0-1-1
at Colorado State	01/16/10	67-58	w	21-5-1	DNP	2-1-0	5-5-5	5-9-1	3-1-0	DNP
at Wyoming Cowgirls	1/19/10	54-69	L	2-5-2	DNP	0-0-0	11-3-3	8-7-1	6-3-1	DNP

**THE STAT CREW SYSTEM**  
**Brigham Young University Category Leaders (as of Jan 21, 2010)**  
**All games**

<b>Points</b>	<b>G</b>	<b>Pts</b>	<b>Pts/G</b>	<b>Scoring Average</b>	<b>G</b>	<b>Pts</b>	<b>Avg/G</b>
BONHAM, Mindy	16	183	11.4	BONHAM, Mindy	16	183	11.4
WOOD, Coriann	16	166	10.4	WOOD, Coriann	16	166	10.4
FOREMAN, Jazmine	16	162	10.1	FOREMAN, Jazmine	16	162	10.1
RILEY, Kristen	16	136	8.5	RILEY, Kristen	16	136	8.5
HALL, Haley	16	129	8.1	HALL, Haley	16	129	8.1
KAUFUSI, Alexis	16	119	7.4	KAUFUSI, Alexis	16	119	7.4
MOEAKI, Keilani	16	83	5.2	MOEAKI, Keilani	16	83	5.2
PETERSON, Dani	16	56	3.5	PETERSON, Dani	16	56	3.5
PARKER, Kim	8	24	3.0	PARKER, Kim	8	24	3.0
JUDKINS, Jaime	12	21	1.8	JUDKINS, Jaime	12	21	1.8
JACKSON, Jenteal	6	8	1.3	JACKSON, Jenteal	6	8	1.3
BATES, Stephanie	9	7	0.8	BATES, Stephanie	9	7	0.8

<b>FG Percentage</b>	<b>FG</b>	<b>Att</b>	<b>Pct</b>	<b>Field Goal Attempts</b>	<b>G</b>	<b>Att</b>	<b>Att/G</b>
KAUFUSI, Alexis	49	96	.510	BONHAM, Mindy	16	159	9.9
FOREMAN, Jazmine	56	111	.505	WOOD, Coriann	16	133	8.3
BECK, Marie	2	4	.500	HALL, Haley	16	132	8.3
JUDKINS, Jaime	7	14	.500	RILEY, Kristen	16	114	7.1
RILEY, Kristen	54	114	.474	FOREMAN, Jazmine	16	111	6.9
BONHAM, Mindy	74	159	.465				
WOOD, Coriann	58	133	.436	<b>Field Goals Made</b>	<b>G</b>	<b>Made</b>	<b>Made/G</b>
MOEAKI, Keilani	34	78	.436	BONHAM, Mindy	16	74	4.6
PETERSON, Dani	25	59	.424	WOOD, Coriann	16	58	3.6
PARKER, Kim	8	19	.421	FOREMAN, Jazmine	16	56	3.5
HALL, Haley	47	132	.356	RILEY, Kristen	16	54	3.4
BATES, Stephanie	2	10	.200	KAUFUSI, Alexis	16	49	3.1
JACKSON, Jenteal	2	10	.200				

<b>3-Point Percentage</b>	<b>3FG</b>	<b>Att</b>	<b>Pct</b>	<b>3-Point FG Attempts</b>	<b>G</b>	<b>Att</b>	<b>Att/G</b>
FOREMAN, Jazmine	25	49	.510	HALL, Haley	16	78	4.9
WOOD, Coriann	22	50	.440	WOOD, Coriann	16	50	3.1
MOEAKI, Keilani	5	12	.417	FOREMAN, Jazmine	16	49	3.1
HALL, Haley	29	78	.372	BONHAM, Mindy	16	40	2.5
PARKER, Kim	4	11	.364	RILEY, Kristen	16	26	1.6
JUDKINS, Jaime	4	11	.364				
BONHAM, Mindy	14	40	.350	<b>3-Point FG Made</b>	<b>G</b>	<b>Made</b>	<b>Made/G</b>
BECK, Marie	1	3	.333	HALL, Haley	16	29	1.8
BATES, Stephanie	2	10	.200	FOREMAN, Jazmine	16	25	1.6
JACKSON, Jenteal	1	5	.200	WOOD, Coriann	16	22	1.4
RILEY, Kristen	5	26	.192	BONHAM, Mindy	16	14	0.9
LEACH, Megan	0	4	.000	RILEY, Kristen	16	5	0.3
PETERSON, Dani	0	10	.000	MOEAKI, Keilani	16	5	0.3

<b>Free Throw Percent</b>	<b>FG</b>	<b>Att</b>	<b>Pct</b>	<b>Free Throw Attempts</b>	<b>G</b>	<b>Att</b>	<b>Att/G</b>
LEACH, Megan	2	2	1.000	RILEY, Kristen	16	45	2.8
BONHAM, Mindy	21	24	.875	WOOD, Coriann	16	36	2.3
WOOD, Coriann	28	36	.778	KAUFUSI, Alexis	16	36	2.3
JUDKINS, Jaime	3	4	.750	FOREMAN, Jazmine	16	35	2.2
FOREMAN, Jazmine	25	35	.714	BONHAM, Mindy	16	24	1.5
HALL, Haley	6	10	.600				
KAUFUSI, Alexis	21	36	.583	<b>Free Throws Made</b>	<b>G</b>	<b>Made</b>	<b>Made/G</b>
PARKER, Kim	4	7	.571	WOOD, Coriann	16	28	1.8
RILEY, Kristen	23	45	.511	FOREMAN, Jazmine	16	25	1.6
BATES, Stephanie	1	2	.500	RILEY, Kristen	16	23	1.4
MOEAKI, Keilani	10	22	.455	BONHAM, Mindy	16	21	1.3
PETERSON, Dani	6	14	.429	KAUFUSI, Alexis	16	21	1.3

**THE STAT CREW SYSTEM**  
**Brigham Young University Category Leaders (as of Jan 21, 2010)**  
**All games**

<b>Rebounds</b>	<b>G</b>	<b>Reb</b>	<b>Reb/G</b>
WOOD, Coriann	16	94	5.9
KAUFUSI, Alexis	16	87	5.4
RILEY, Kristen	16	82	5.1
BONHAM, Mindy	16	63	3.9
FOREMAN, Jazmine	16	52	3.3
HALL, Haley	16	52	3.3

<b>Rebound Average</b>	<b>G</b>	<b>Reb</b>	<b>Avg/G</b>
WOOD, Coriann	16	94	5.9
KAUFUSI, Alexis	16	87	5.4
RILEY, Kristen	16	82	5.1
BONHAM, Mindy	16	63	3.9
HALL, Haley	16	52	3.3
FOREMAN, Jazmine	16	52	3.3

<b>Offensive Rebounds</b>	<b>G</b>	<b>No.</b>	<b>Avg/G</b>
WOOD, Coriann	16	33	2.1
KAUFUSI, Alexis	16	31	1.9
RILEY, Kristen	16	30	1.9
BONHAM, Mindy	16	24	1.5
MOEAKI, Keilani	16	22	1.4

<b>Defensive Rebounds</b>	<b>G</b>	<b>No.</b>	<b>Avg/G</b>
WOOD, Coriann	16	61	3.8
KAUFUSI, Alexis	16	56	3.5
RILEY, Kristen	16	52	3.3
FOREMAN, Jazmine	16	40	2.5
BONHAM, Mindy	16	39	2.4

<b>Fouls</b>	<b>G</b>	<b>No.</b>	<b>Per/G</b>
WOOD, Coriann	16	48	3.0
FOREMAN, Jazmine	16	39	2.4
HALL, Haley	16	35	2.2
RILEY, Kristen	16	34	2.1
BONHAM, Mindy	16	31	1.9

<b>Foulsouts</b>	<b>G</b>	<b>No.</b>
WOOD, Coriann	16	1
FOREMAN, Jazmine	16	1
HALL, Haley	16	1

<b>Assists</b>	<b>G</b>	<b>No.</b>	<b>Ast/G</b>
HALL, Haley	16	74	4.6
BONHAM, Mindy	16	59	3.7
FOREMAN, Jazmine	16	57	3.6
RILEY, Kristen	16	22	1.4
MOEAKI, Keilani	16	16	1.0

<b>Steals</b>	<b>G</b>	<b>No.</b>	<b>Stl/G</b>
HALL, Haley	16	40	2.5
FOREMAN, Jazmine	16	34	2.1
BONHAM, Mindy	16	31	1.9
RILEY, Kristen	16	17	1.1
KAUFUSI, Alexis	16	9	0.6

<b>Blocked Shots</b>	<b>G</b>	<b>No.</b>	<b>Blk/G</b>
WOOD, Coriann	16	12	0.8
RILEY, Kristen	16	11	0.7
KAUFUSI, Alexis	16	7	0.4
PETERSON, Dani	16	7	0.4
LEACH, Megan	6	5	0.8

<b>Minutes</b>	<b>G</b>	<b>No.</b>	<b>Min/G</b>
BONHAM, Mindy	16	508	31.8
HALL, Haley	16	497	31.1
FOREMAN, Jazmine	16	472	29.5
WOOD, Coriann	16	358	22.4
RILEY, Kristen	16	341	21.3

<b>Turnovers</b>	<b>G</b>	<b>No.</b>	<b>TO/G</b>
BONHAM, Mindy	16	45	2.8
FOREMAN, Jazmine	16	42	2.6
KAUFUSI, Alexis	16	34	2.1
MOEAKI, Keilani	16	31	1.9
WOOD, Coriann	16	30	1.9

# 2009-10 **BYU BASKETBALL** RADIO/TV ROSTER



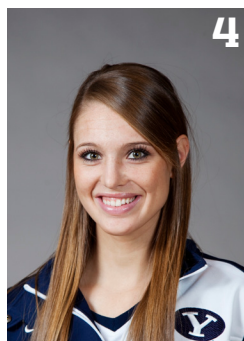
1

**Jenteal Jackson**  
G, 5-7, So.  
Salt Lake City, UT/Skyline HS



3

**Jazmine Foreman**  
G, 5-5, Jr.  
Vancouver, WA/Hudson's Bay HS



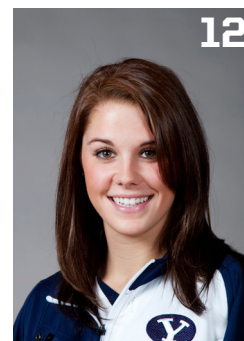
4

**Kim Parker**  
G, 5-11, Fr.  
Heber City, UT/Wasatch HS



10

**Alexis Kaufusi**  
F/C, 6-1, Fr./RS  
Provo, UT/Timpview HS



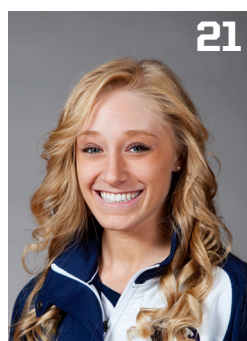
12

**Stephanie Vermunt**  
G/F, 6-0, Fr.  
Airdrie, Alberta, Canada/Bert Church HS



13

**Jaime Judkins**  
G, 5-6, Sr.  
Salt Lake City, UT/Skyline HS



21

**Stephanie Buhler Bates**  
G/F, 6-0, So.  
Oregon City, OR/Oregon City HS



22

**Mindy Nielson**  
G, 5-10, Jr.  
Centennial, CO/Regis Jesuit HS



23

**Coriann Wood**  
F, 6-1, Jr.  
Basin City, WA/Connell HS



31

**Marie Beck**  
G, 5-8, Jr.  
Oxnard, CA/Channel Islands HS



32

**Dani Peterson**  
F, 6-1, So.  
Salt Lake City, UT/Skyline HS



33

**Haley Hall**  
G, 5-4, Jr.  
Syracuse, UT/Clearfield HS



35

**Kristen Riley**  
F, 6-3, So.  
San Clemente, CA/San Clemente HS



45

**Keilani Moeaki**  
F, 6-2, Jr.  
Warrenville, IL  
Wheaton Warrenville South HS



55

**Megan Marks Leach**  
F, 6-2, Jr.  
South Jordan, UT/Bingham HS



**Jeff Judkins**  
Head Coach



**Alli Bills**  
Assistant Coach



**Stacy Jensen**  
Assistant Coach



**Chris Boettcher**  
Assistant Coach



**Dan Doerflein**  
Director of Basketball Operations