



# BYU Women's Basketball

Athletic Communications • 30 Smith Fieldhouse • Provo, Utah • 84602  
 801-422-8948 office • 801-422-0633 fax • website: [www.byucougars.com](http://www.byucougars.com)

Women's Basketball Contact: Norma Collett • 801-422-4908 office • 801-372-0989 cell • email: [norma\\_collett@byu.edu](mailto:norma_collett@byu.edu)

## BYU Women's Basketball Information (Mar. 18, 2010)

Notes- Game #30 - 2010 WNIT - First Round: BYU (20-9, 11-5) vs. Pepperdine (20-11, 9-5)

### 2009-10 SCHEDULE/Results

Date	Opponent	Time/Results
Nov. 6	Westminster, Exh.	W 85-58
Nov. 7	Chadron St., Exh.	W 107-55
Nov. 13	Utah Valley Univ.	W 73-51
Nov. 18	@ Washington	L 66-67
Nov. 20	@ Montana State	W 79-54
Nov. 24	@ SUU	W 72-39
Nov. 27	Kansas State	L 62-65
Dec. 4	vs. San Fran (@Hukilau Inv.)	W 72-60
Dec. 5	vs. Hawaii (@ Hukilau Inv.)	W 81-44
Dec. 9	@ Weber State	L 61-62 (2ot)
Dec. 12	@ CS Fullerton	W 75-72
Dec. 19	@ Utah State	W 61-48
Dec. 31	Portland	W 69-57
Jan. 2	Nevada	W 61-41
Jan. 6	@ UNLV*	W 71-61
Jan. 13	Air Force Academy* (BYU TV)	W 77-46
Jan. 16	@ CSU*	W 67-58
Jan. 19	@ Wyoming* (The Mtn.)	L 54-69
Jan. 23	SDSU*	W 73-63
Jan. 27	UNM* (BYU TV)	L 57-60
Jan. 30	@ Utah*	W 69-52
Feb. 3	@ TCU*	L 40-64
Feb. 6	UNLV* (BYU TV)	W 76-60
Feb. 13	@ Air Force Academy*	W 78-53
Feb. 17	CSU* (BYU TV)	W 72-54
Feb. 20	Wyoming* (BYU TV)	W 51-48
Feb. 24	@ SDSU*	L 71-73
Feb. 27	@ UNM*(CBS C)	L 30-62
Mar. 3	Utah* (BYU TV)	W 54-37
Mar. 6	TCU*	W 70-65
Mar. 10-13	@ MWC Tournament	TBA
Mar. 12	vs. SDSU in Semifinals	L 47-77
Mar. 17-20	@ WNIT 1st/2nd Round	TBA
Mar. 18	vs. Pepperdine WNIT 1st Round	7 p.m.
Mar. 24-26	@ WNIT Third Round	TBA
Mar. 27-29	@ WNIT Quarterfinals	TBA
Mar. 31-Apr. 1	@ WNIT Semifinals	TBA
Apr. 3	@ WNIT Championship	TBA

### SEASON CONTINUES, WOMEN IN WNIT

#### GAME #30 INFORMATION - vs. PEPPERDINE 3/18/10

Tip Off:	7 p.m.
Site:	Marriott Center
Live Internet Audio:	BYU Radio (Jay Monsen)
Live Television:	BYU TV (Robbie Bullough, Kristen Kozlowski)
Live Stats:	<a href="http://www.byucougars.com">www.byucougars.com</a>
The Series:	Tied at 1-1
Last Meeting:	BYU won 98-78 at LBS Tournament (Dec. 9, 1983)

### WOMEN PLAY IN MARCH MADNESS, HOST PEPPERDINE IN WNIT

With an impressive (20-9, 11-5) record and a second place finish in the MWC, the BYU women's basketball team joins March Madness with its fifth invitation to the WNIT.

The Cougars will host Pepperdine (20-11, 9-5) on Thurs. Mar. 18 at 7 p.m.

BYU was one of 31 teams to receive an Automatic Berth. Three other schools from the MWC (WY, UNM and Utah) received At-large Berths in to the 64-team field.

Pepperdine finished third in the West Coast Conference and lost to No. 14-ranked Gonzaga in their league's championship game.

#### BYU Probable Starters

No.	Name	Pos.	Ht.	Yr.	PPG	RPG
03	Jazmine Foreman	G	5-5	Jr	9.6	3.3
22	Mindy Bonham (Nielson)	G	5-10	Jr	11.3	4.1
33	Haley Hall	G	5-4	Jr	8.7	3.7
45	Keilani Moeaki	F	6-2	Jr	4.7	2.2
35	Kristen Riley	C	6-3	So	8.2	5.7

#### Off the Bench

No.	Name	Pos.	Ht.	Yr.	PPG	RPG
23	Coriann Wood	F	6-1	Jr	10.2	5.3
10	Alexis Kaufusi	F	6-1	Fr	6.8	4.6
32	Dani Peterson	F	6-1	So	3.2	2.5
13	Jaime Judkins	G	5-6	Sr	1.1	0.8
21	Stephanie Buhler-Bates	F	6-1	So	0.7	0.5
31	Marie Beck	G	5-8	Jr	0.5	0.5
55	Megan Leach	F	6-3	Jr	0.3	1.0

Home Games played at Marriott Center  
 All Times Local to Site

\*Indicates MWC Games

### 2009-10 BASKETBALL STAFF

Head Coach:	Jeff Judkins (Utah '78)
Office Phone:	801-422-8035
Best time to call:	9-10 a.m.daily
Assistant Coach:	Alli Bills (Utah, '98)
Office Phone:	801-422-1548
Assistant Coach:	Stacy Jensen (BYU '02)
Office Phone:	801-422-7682
Assistant Coach:	Chris Boettcher (BYU '94)
Office Phone:	801-422-8155



### BYU 2009-10 Quick Facts

#### University Information

Location: ..... Provo, Utah  
 Founded: ..... Oct. 15, 1875  
 Elevation: ..... 4,553 feet  
 Enrollment: ..... 33,278  
 Nickname: ..... Cougars  
 Mascot ..... Cosmo  
 Colors ..... Dark Blue and White

#### Team Information

2009-10 Record: 20-9, 11-5  
 Coach Judkins Record: 177-98  
 2008-09 Overall Record: 18-11  
 2008-09 Conf. Record: 8-8/5th (t)  
 Letterwinners R/L: 12/3  
 Starters R/L: 3/2  
 Newcomers: 3

#### Roster Breakdown

##### Letterwinners Returning: (12)

Jaime Judkins: 5-6 Sr. G (0.9 ppg; 0.3 rpg)  
 Marie Beck: 5-8 Jr. G (Played in three games)  
 Jazmine Foreman: 5-5 Jr. G (6.8 ppg; 4.0 rpg)  
 Megan Marks: 6-2 Jr. F (1.4 ppg; 1.6 rpg)  
 Keilani Moeaki: 6-2 Jr. F (5.3 ppg; 2.8 rpg)  
 Mindy Nielson: 5-10 Jr. G (10.4 ppg; 3.9 rpg)  
 Coriann Wood: 6-1 Jr. F (6.4 ppg; 4.8 rpg)  
 Stephanie Buhler: 6-0, So F (2.4 ppg, 0.2 rpg)  
 Jenteal Jackson: 5-7, So G (1.0 ppg, 0.7 rpg)  
 Kristen Riley: 6-3, So. F (3.3 ppg, 3.6 rpg)  
 Dani Peterson: 6-1, So. F (2.0 ppg, 1.5 rpg)  
 Haley Hall: 5-4 Jr. G (played in 7 games in 2006-07)\*

##### Letterwinners Lost: (3)

Sarah Hostetter: (2.6 ppg; 1.0 rpg)  
 Cassie King: (7.9 ppg; 6.0 rpg)  
 Shawnee Slade: (9.8 ppg; 4.0 rpg)

##### Starters Returning: (3)

Mindy Nielson: 5-10 Jr. G (10.4 ppg; 3.9 rpg)  
 Jazmine Foreman: 5-5 Jr. G (6.8 ppg; 4.0 rpg)  
 Keilani Moeaki: 6-2 Jr. F (5.3 ppg; 2.8 rpg)

##### Starters Lost: (2)

Cassie King: (7.9 ppg; 6.0 rpg)  
 Shawnee Slade: (9.8 ppg; 4.0 rpg)

##### Newcomers: (3)

Alexis Kaufusi: 6-1 F (Provo, UT/Timpview HS)^  
 Kim Parker: 5-11 G/F (Heber City, UT/Wasatch HS)  
 Stephanie Vermunt: 6-0 F (Airdrie, Alb., Can/Bert Church HS)

\* Played in six games in 2006-07 prior to torn ACL injury. Reinjured it in 2007-08. ACL injury 2008-09  
 ^ 2008-09 Redshirt

### 2009-10 STATS SUMMARY

- ✓ Shooting from field: (.424, 713-1682)
- ✓ Shooting from three-point line: (.355, 200-564)
- ✓ Shooting from free-throw line: (.658, 263-400)
- ✓ Average points per game: 65.1
- ✓ Average rebounds per game: 37.7
- ✓ Average assists per game: 16.5
- ✓ Average steals per game: 9.3
- ✓ Average blocks per game: 3.4
- ✓ Average turnovers per game: 17.1

### COUGARS IN THE NCAA STATS (AS OF MAR. 14, 2010)

#### TEAM

- Assists Per Game - 13th (16.6)
- Assist/Turnover Ratio - 26nd (0.97)
- Three-Point Field Goals Per Game - 37th (6.9)
- Scoring Defense - 39th (57.3)
- Three-Point Field Goal Percentage - 40th (35.5)

#### PLAYER

- Assist/Turnover Ratio - Haley Hall, 22nd (2.0)

### TEAM HAS STRONG SHOWING IN THE MWC 2009-10 RACE

With an 11-5 record, the Cougar women clinched a second place finish in league play. BYU was picked to finish sixth in the MWC.

### 2010 MWC POSTSEASON HONORS

Mindy Bonham - Second Team All-MWC  
 Mindy Bonham - All-Defensive Team  
 Jazmine Foreman - All-Defensive Team  
 Jazmine Foreman - Honorable Mention All-MWC  
 Coriann Wood - 6th Player of the Year  
 Coriann Wood - Honorable Mention All-MWC  
 Haley Hall - Honorable Mention All-MWC  
 Kristen Riley - Honorable Mention All-MWC

### TICKET PRICES - FIRST ROUND GAME

Student General Admission - \$5  
 Adult General Admission - \$6  
 Reserved - \$7  
 Courtside - \$20

Tickets may be purchased at the Marriott Center Ticket office or online at <http://www.byutickets.com/>

### PLAYER INJURY REPORT

Freshman guard Kim Parker suffered a season ending injury in the game at Weber State. She has torn ligaments in her left foot. Sophomore guard Jenteal Jackson will apply for a medical redshirt for this year due to an on-going back problem.

**USA Today ESPN Div. I Top 25 Coaches Poll -- (3/15/10) - Week 18**

- Rk. School**
1. Connecticut (33-0)
  2. Stanford (31-1)
  3. Tennessee (30-2)
  4. Nebraska (30-1)
  5. Xavier (27-3)
  6. Duke (27-5)
  7. Notre Dame (27-5)
  8. Ohio State (30-4)
  9. Texas A&M (25-7)
  10. West Virginia (28-5)
  11. Florida State (26-5)
  12. Oklahoma (23-10)
  13. Georgetown (25-6)
  14. Gonzaga (27-4)
  15. Kentucky (25-7)
  16. Iowa State (23-7)
  17. St. John's (24-6)
  18. Baylor (23-9)
  19. Oklahoma State (23-10)
  20. Texas (22-10)
  21. Virginia (21-9)
  22. UCLA (24-8)
  23. Hartford (27-4)
  24. Middle Tennessee (25-5)
  25. Michigan State (22-9)

Receiving Votes. TCU\*

**2009-10 BYU's record when...**

BYU leads at half . . . . .	18-2
Opponent leads at half . . . . .	2-7
Score is tied at the half . . . . .	0-0
Game goes into overtime. . . . .	0-1
BYU shoots 50 % or better . . . . .	2-1
Opponent shoots 50 % or better. . . . .	0-1
BYU makes five or more 3-pointers. . . . .	20-4
Opponent makes 5 or more 3-pointers . . . . .	8-7
BYU outrebounds opponent . . . . .	12-4
Opponent outrebounds BYU . . . . .	5-4
Rebounds are equal . . . . .	1-0
BYU has 16 and under turnovers . . . . .	9-4
Opponent has 16 and under . . . . .	6-4
BYU has 17-20 turnovers . . . . .	7-4
Opponent has 17-20 turnovers . . . . .	7-2
BYU has more than 20 turnovers . . . . .	4-2
Opponent has more than 20 turnovers . . . . .	7-2
Cougars play at home . . . . .	10-2
Cougars play on the road . . . . .	8-6
Cougars play at neutral site . . . . .	2-1

**FRESHMAN TO REDSHIRT**

Stephanie Vermunt, a 6-0 freshman guard/forward from Airdrie, Alberta, Canada will redshirt the 2009-10 season.

**TEAM CAPTAINS**

Senior guard Jaime Judkins and junior point guard Haley Hall have been selected by their teammates as co-captains for the 2009-10 season.

**POLL WATCHING IN 2009-10 (AS OF 3/15/10)**

The Cougars received votes in the AP poll twice this year. The week of Jan. 18 they received three nods while the week of Mar. 8 they received two votes.

**PREVIOUS GAME - vs. SDSU AT MWC CHAMPS. (3/12/10)**

The No. 2 seeded BYU women's basketball team fell to the San Diego State Aztecs 47-77 in the semifinals of the 2010 MWC women's basketball tournament.

The BYU lineup was led by Coriann Wood with 11 points. This game was Wood's 17th double-figure game of the season and 26th of her career. Wood also added five rebounds to BYU's total of 29 and was the only Cougar to score from the three-point line.

Mindy Bonham added eights points to the Cougar effort with the second highest score on the team and was perfect from the free-throw line.

Jazmine Foreman led the Cougars with her six rebounds on the game and perfect free-throw shooting. Foreman fouled out of the game with five minutes left on the clock after being BYU's offensive catalyst through most of the game.

The Cougars found themselves in foul trouble from the very start with a call on BYU's Kristen Riley just 20 seconds into the start of the game. Trouble continued for BYU as they tallied seven team fouls with 13 minutes left to play in the half. The Aztecs went to the free-throw line 15 times in the first half and eight times in the second while BYU's eight trips in the first would also be their total for the game.

Shooting woes kept the Cougars in the dark for the most part of the game, shooting 36.4 percent from the field and just seven percent from the 3-point line.

With 38 seconds left on the clock before halftime, BYU cut the Aztec lead to ten after back-to-back trips to the charity stripe from Mindy Bonham and Jazmine Foreman, both going 2-for-2. The last 30 seconds of the half featured the Aztecs tallying five straight points to give them the 15-point lead as they headed into the locker room.

The Cougar bench, despite tough shooting percentage, still outscored the Aztec bench 19-9 as they have against almost all of their opponents throughout the season.

## COUGARS IN THE WNIT - 2010

This will be the fifth time that the BYU women's basketball team has been selected to compete in the expanded 64-team single elimination WNIT. In the postseason tournament, the Cougars have compiled a 3-4 record in four appearances. The last time BYU was in the WNIT was during the 2004-05 campaign where they fell to Gonzaga 57-71 in the first round.

BYU also competed in the Preseason WNIT during the 2006-07 campaign where they advanced to the Final Four after a 73-50 home victory over Idaho State, an upset 55-52 victory over then No. 5 ranked Stanford on their home court before falling to the Baylor Bears 58-84.

## ABOUT THE POSTSEASON WNIT

The Women's National Invitation Tournament consists of 64 Division I women's basketball teams who compete at participating schools including the semifinals and the championships. Every round is single elimination.

The Postseason WNIT features 32 first-round games, followed by 16 second-round games, eight third-round games, four quarterfinal games, two semifinal games and the championship.

BYU In WNIT - Year-by-Year

Year	Record	Result	Of Note
1981-82	24-13	2-1	Beat DePaul (72-69) Lost to Florida St. (71-75) Beat Illinois St. (78-73)
1998-99	16-13	0-1	Lost to Colorado (53-70)
2000-01	19-13	1-1	Beat Oregon St. (78-73) Lost at Hawaii (73-77) in ot
2004-05	19-11	0-1	Lost at Gonzaga (57-71)
Totals		3-4	

---

### 2008-09 SEASON REVIEW

Highlights of the 2008-09 season included a 10-game win streak that spanned from the end of November to the middle of January marking another winning campaign for BYU's women's basketball program.

The team compiled an impressive 18-11 overall record and finished in fifth place in the Mountain West Conference with an 8-8 mark.

Along the way, the Cougars recorded impressive wins over two Pac-10 schools, USC and Oregon, as well as convincing victories over Wright State, Long Beach State, Arkansas State, Nevada and the University of Portland. They also captured wins against in-state foes Utah State, Southern Utah and Weber State.

Other highlights included tallying an 11-1 record when leading at the half, going 12-1 when outrebounding opponents and 13-7 when making at least five three pointers in a game. The team also grabbed a season-best 55 boards vs. Utah State in December, tying for second place in the program's history. They also had season bests in assists with 19 at Portland and in steals with 13 at San Diego State. In the win at Nevada, the team scored a season high 81 points. The team scored 60 points or more in 13 games winning all but one, and they had at least two players score in double figures in a total of 18 contests while capturing 12 wins. The deep bench on the BYU squad also played a vital role in the success of the season. There were a total of 17 games where the Cougar bench outscored the opponent bench, and of those the team won 11 of those contests.

As in years past, BYU achieved success during the 2009 MWC race sweeping the series against Colorado State, UNLV, and the Air Force Academy, splitting the series against Wyoming and TCU. The Cougars were the only team in league play to get a road win vs. the Horned Frogs.

With an 8-8 MWC record, the Cougars finished tied for fifth place with Wyoming, but went into the tournament as the sixth seed team because of tie breaking policies. In the league tournament played in Las Vegas at the Thomas & Mack Center, the Cougars faced UNLV and despite an strong come from behind effort, fell to the Rebels 58-66 in first round action. UNLV advanced to the semifinals before falling to San Diego State 63-71.

For the first time in the school's history, Cougar fans got a chance to see the nation's No. 1 ranked team play in the Marriott Center. Connecticut, who went on to win the 2009 NCAA Championships, played on the court on Nov. 25, 2008. On that night there were 3,109 fans in attendance making it the largest home crowd on the year, and the highest ranked basketball opponent men or women to ever play at the Marriott Center. When New Mexico played in Provo on Jan. 17, it was ranked 25th nationally, and was the second top-25 ranked team to make an appearance in Provo during the season.

The Cougar squad finished the year with an 8-6 record at home including a 67-45 victory over Oregon on Nov. 21 which improved coach Jeff Judkins' home opener record to 7-1 in his seven seasons.

BYU ended the year going 8-5 on the road and 2-0 when playing at neutral sites.

**2009-10 BYU Numerical Roster**

<b>No.</b>	<b>Name</b>	<b>Pos.</b>	<b>Ht.</b>	<b>Cl.</b>	<b>Exp.</b>	<b>Hometown/Previous School</b>
1	Jenteal Jackson	G	5-7	So	1V	Salt Lake City, UT/Skyline HS
3	Jazmine Foreman	G	5-5	Jr	2V	Vancouver, WA/Hudson's Bay HS
4	Kim Parker	G	5-11	Fr	HS	Heber City, UT/Wasatch HS
10	Alexis Kaufusi	F/C	6-1	Fr/RS	HS	Provo, UT/Timpview HS
12	Stephanie Vermunt	G/F	6-0	Fr	HS	Airdrie, Alberta, Canada/Bert Church HS
13	Jaime Judkins	G	5-6	Sr	3V	Salt Lake City, UT/Skyline HS
21	Stephanie Buhler Bates	F	6-0	So	1V	Oregon City, OR/Oregon City HS
22	Mindy Bonham (Nielson)	G	5-10	Jr	2V	Centennial, CO/Regis Jesuit HS
23	Coriann Wood	F	6-1	Jr	2V	Basin City, WA/Connell HS
31	Marie Beck	G	5-8	Jr	2V	Oxnard, CA/Channel Islands HS
32	Dani Peterson	F	6-1	So	1V	Salt Lake City, UT/Skyline HS
33	Haley Hall <sup>^</sup>	G	5-4	Jr	1V	Syracuse, UT/Clearfield HS
35	Kristen Riley	F	6-3	So	1V	San Clemente, CA/San Clemente HS
45	Keilani Moeaki	F	6-2	Jr	2V	Warrenville, IL/Wheaton Warrenville South HS
55	Megan Marks Leach	F	6-2	Jr	2V	South Jordan, UT/Bingham HS

<sup>^</sup> Did not compete in 2008-09 due to third ACL injury at the beginning of the year

**Head Coach:** Jeff Judkins

**Assistant Coaches:** Alli Bills, Stacy Jensen, Chris Boettcher

**Director of Basketball Operations:** Dan Doerflein

**Athletic Trainer:** Carolyn Billings

**Team Manager:** Erica Eyestone

### TEAM HIGHLIGHTS (2009-10)

- ◆ Team's best field goal percentage, nonconference: (.500, 30-60) vs. Hawaii, 12/5/09
- ◆ Team's best field goal percentage, in league play: (.600, 33-55), vs. Air Force, 1/13/10
- ◆ Team's best 3-point field goal percentage, nonconference: (.571, 8-14) at Montana State, 11/20/09
- ◆ Team's best 3-point field goal percentage, in league play: (.500, 8-16), at Colorado State, 1/16/10
- ◆ Team's best free throw percentage, nonconference: (.800, 12-15), vs. Nevada, 1/2/10
- ◆ Team's best free throw percentage, in league play: (.900, 9-10), at Wyoming, 1/19/10
- ◆ Most three pointers made in nonconference play: 12 vs. Hawaii, 12/5/10 at Hukilau Inv. (BYU-H)
- ◆ Most three pointers made in league play: 11 vs. UNLV, 2/6/10
- ◆ Most assists in nonconference: 23 vs. Hawaii, 12/5/09
- ◆ Most assists in league play: 29 vs. Air Force, 1/13/10
- ◆ Most blocks in nonconference: 7 at SUU, 11/24/09
- ◆ Most blocks in league play: 8 vs. Air Force, 1/13/10
- ◆ Most steals in nonconference: 20 at SUU, 11/24/09
- ◆ Most steals in league play: 18 @ Air Force, 2/13/10 (once more)
- ◆ Least number of turnovers, nonconference: 6 vs. Portland, 12/31/09
- ◆ Least number of turnovers, in league play: 10 vs. UNLV on 2/6/10
- ◆ Most rebounds in league play: 45 vs. CSU, 2/17/10
- ◆ The 50 rebounds BYU had in the win at Montana State on 11/20/09 tie for 10th place in the team's all-time records for boards per game and as of 12/20/09 are the most to date
- ◆ The 37 point margin of victory in the win over Hawaii is the most this season and the 81 points scored are season highs. The last time the Cougars scored over 80 points was on Dec. 10, 2005 where they beat NAU 82-48 at home. In that same game BYU went into the locker room at halftime up 48-16, a 32-point advantage which is the biggest first half lead by the team so far this year.
- ◆ In the road win over the Utes on 1/30/10, BYU made 10 three pointers which tie for second best on the year and are the most in MWC action to date.
- ◆ The Cougar defense held Utah on 3/3/10 to just 14 first half points which are the lowest by a league opponent to date.
- ◆ For the second time in league play, all 12 players that are eligible to play got playing time in the road win over the Air Force Falcons on 2/13/10, the first was in the victory at Utah on 1/30/10.
- ◆ The 1,783 in attendance at the home game vs. Utah on 3/03/10 is a team-high in the Marriott Center for the Cougars this season and in league play. The total attendance marks the third 1,000-plus fans at a home game this year. In the home game vs. TCU on 3/6/10 there were 1,381 fans present.
- ◆ All 14 players on the Cougar roster played in the contest at SUU.
- ◆ In all games except three to date, at least two BYU players had scored in double figures. Most recently, four players (Hall 17, Bonham 12, Riley 12, Kaufusi 10) had double digit performances in the home game vs. TCU on 3/6/10. The game marked the ninth time this year where four players had double digit scoring.
- ◆ There were two games where no player scored in double figures at TCU on 2/3/10 and at UNM on 2/27/10. In one game, vs. SDSU in the semifinals of the MWC on 3/12/10, Coriann Wood (11) was the only player to score in double figures.
- ◆ In the home game vs. San Diego State on 1/23/10, five players scored in double figures, a first this year. Under coach Judkins there's been three other contest where five players have had double digit performances. They are:
  - Nov. 18, 2008: BYU at Nevada (Foreman, Nielson, Moeaki, King, Wood)
  - Dec. 6, 2004: BYU vs. George Washington (D. Cheesman, Sullivan, Gillespie, Anderson, Kozlowski)
  - Feb. 7, 2002: BYU at Wyoming (Leitner, D. Cheesman, Thorn, Pearson, Jensen)
- ◆ In the game vs. the University of San Francisco nine of the 11 players scored and all of them contributed in rebounds.
- ◆ In the home game vs. Portland, BYU picked up a 69-57 victory over Portland making it the second time this year that the team has put up less than 70 points and won.
- ◆ In the road game at Utah State, BYU won 61-48 marking the first time this season that the team has scored under 70 points and captured a win.

---

### TEAM HIGHLIGHTS - CONTINUED (2009-10)

- The Cougars scored at least 70 points 13 times on the year compiling a 12-1 record, eight of those were in league play. Its most recent game was on Mar. 6, where they defeated regular season champion TCU 70-65. The 78 points scored at Air Force on Feb. 13 were the most in league play. The 25-point margin of victory over the Falcons is the second largest in league games. In the first meeting between the two schools, the Cougars won by 31 points.
- Head Coach Jeff Judkins improved to 8-1 in home openers with the 73-51 victory over Utah Valley University on Nov. 13



---

### PLAYER HIGHLIGHTS (2009-10) STARTERS/RESERVES

#### STARTERS

##### Jazmine Foreman:

- had 11 points in the home win over Utah on 3/3/10 marking her 12th season and 18th career double figure game
- picked up 12 points for her 11th season and 17th career double figure contest in the road game at SDSU on 2/24/10
- tallied a team high 13 points in the home victory over Wyoming on 2/20/10 for her 10th season and 16th career double digit scoring output
- led all scorers with 17 points in the road win at Air Force on 2/13/10 marking her ninth season and 15th career double figure game, the points were the third best scoring output in league play to date, the (.600, 6-10) field goal percentage is the best this year and in her career, also had five steals which are the most in league action to date
- recorded her first season and career double double with 11 points and 11 assists in the win vs. UNLV on 2/6/10, the 11 assists were team and game highs, the double digit scoring is her eighth season and 14th overall
- was one of five players scoring in double figures in the home victory over SDSU on 1/23/10 with 13 points for her seventh season and 13th overall, in the same game grabbed a season high nine boards which also tie for career highs
- picked up her sixth double digit contest of the year with 12 points in the road win at CSU on 1/16/10 which is also her 12th career double figure outing, in the same game dished out a team and game high six assists which also tie for season highs
- scored in double figures for the fifth time this season and 11th career with 19 points in the league win over the Air Force Academy on 1/13/10, 15 of them were from making five 3-pointers and the total points were team and game highs
- led all scorers with 19 points in the league win at UNLV on 1/6/10 recording her fourth double figure game of the season and her 10th in her career
- with the six assists in the win vs. Nevada on 1/2/10 she ties the number of assists (43) she had tallied her freshman season
- for the second straight game, dished out six assists, this time vs. Portland on 12/31/09 which tie for season highs
- dished out a total of six assists in the game at Utah State on 12/19/09 for new season highs
- had 11 points in the game at Weber State on 12/9/09 for her third double figure game of the year and ninth in her career and also tallied six steals for new season and career highs in that category
- scored a season and career high 21 points in the win over Hawaii on 12/5/09. The points were team and game highs and marked her eighth career double figure outing and her second this season
- of the 21 points scored vs. Hawaii, 12 were from three-point range while the four treys were also season and career highs in three-pointers made in a game
- In the game vs. Hawaii she led the team in steals with five for new season and career highs in that category. The five steals were also team and game highs
- dished out five assists in the win over San Francisco on 12/4/09 for season highs and were also team and game highs
- recorded 11 points in the home game vs. Kansas St., on 11/27/09 for her first double digit outing of the season and her seventh overall
- grabbed five boards in the home game vs. Kansas State on 11/27/09 for season highs

##### Haley Hall:

- had a team high 17 points in the home victory vs. TCU on 3/6/10 for her second straight, 12th season and 15th career double figure outing and also tied her season and career high in steals with five
- led the team in points with 13 in the home win over Utah on 3/3/10 recording her 11th season and 14th career double figure contest
- put up 12 points in the home win over Wyoming on 2/20/10 for her 10th season and 13th career double digit game, in that same contest had five steals which tie for season and career highs to date
- dished out nine assists for season and career highs in that category in the home win over CSU on 2/17/10
- had four steals in the road win at Air Force on 2/13/10

- led all scorers with 22 points in the home win over UNLV on 2/6/10 recording her ninth season and 12th double digit performance of the year
- picked up season and career highs in points and in rebounds with 24 and nine respectively in the road win at Utah on 1/30/10, the points were game and team highs and they marked her eighth season and 12th career double figure outing, in the same game she made 10 three pointers which were also season, career, team and game highs, she also shot (.693, 9-13) from the field and (.666, 6-9) from three point range both of which are season and career bests
- was one of five players to put up double figure points in the home victory over SDSU on 1/23/10 with 11 points recording her seventh season and 11th career double digit outing
- scored 11 points in the game at Wyoming on 1/19/10 for her sixth season and 10th career double figure game
- playing in her third MWC game of the 2010 campaign, picked up five points, five rebounds and five assists in the road win at CSU on 1/16/10
- scored 11 points in the home win vs. Nevada for her fifth double figure contest of the season and her ninth overall and in that same game grabbed new season and career highs in rebounds with six
- dished out a total of six assists and five rebounds in the home win over Portland on 12/31/09 tying season highs in both of those categories
- recorded her fourth double digit game of the year and seventh career with 10 points vs. Portland on 12/31/09
- tied her season and career highs in rebounds with five at Utah State on 12/19/09
- scored 10 points vs. Kansas State for her third time scoring in double-figures this season and her sixth time in her career
- in the road game at Southern Utah on 11/24/09, she tallied five steals for new season and career highs
- for the second straight time scored in double digits with 12 at Montana State on 11/20/09 for her fifth career outing
- led the team in points with 14 including four treys in the road game at Washington on 11/18/09, the points are just one shy of her career high 15 she scored in the road game at Stanford on 11/13/06
- in the first game of the year dished out a career high eight assists which also ended up being team and game highs

### Keilani Moeki

- had three blocks in the home victory over Wyoming on 2/20/10 for season and career highs
- tied her season high in points with nine in league play in the road win at AF on 2/13/10, also dished out three assists and three steals which are season highs and tie for career highs
- led the team in points with nine in the road game at TCU on 2/3/10
- picked up 11 points at Weber State on 12/9/09 recording her third season and 11th career double figure outing, also had seven rebounds for new season highs
- with 11 points in the first road game of the season at Washington on 11/18/09, she has back-to-back games in which she's scored in double digits, marking her 10th career and second this year
- had her first double figure performances in the win over UVU with 14 points, marking her ninth career outing
- grabbed four offensive rebounds vs. UVU on 11/13/09

### Mindy Bonham (Nielson):

- scored 12 points in the home victory over TCU on 3/6/10 for her second straight, 19th season and 38th overall double digit performance, also had nine assists which tie for season and career highs
- tallied 12 points in the home win over Utah on 3/3/10 marking her 18th season and 37th overall double figure contest, in the same game tied her season and career high in steals with six and they were also team and game highs
- led the team in points with 19 in the road game at SDSU on 2/24/10 for her 17th season and 36th double digit scoring performance, she also shot (.727, 8-11) from the field for season and career bests in that category
- had 14 points in the home win over CSU on 2/17/10 for her 16th season, 35th career and third straight double figure game
- scored 13 points in the road win at AF marking her 15th season and 34th career double-digit outing
- put up 13 points in the home victory over UNLV on 2/6/10 for her 14th season and 33rd career double digit outing
- grabbed eight boards in the road win at Utah on 1/30/10 which tie for season and career highs

- 
- led all scorers with 18 points in the home game vs. New Mexico on 1/27/10 recording her 13th season, 32nd career and second straight double figure outing, the 18 also were the most in league play to date
  - was one of five players who tallied double digits in the home victory over SDSU on 1/23/10 with 13 points for her 12th season and 31st career outing
  - recorded her 11th season and 30th career double digit performance with 11 points in the road win at CSU on 1/16/10
  - dished out a team and game high nine assists for the second straight time in the home win against the Air Force on 1/13/09, the assists were also team and game highs
  - scored 11 points and dished out nine assists in the win over the Rebels on 1/6/10 for her 10th double digit performance of the year and her 29th overall, and the nine assists are new season highs and tie for career highs
  - tallied 13 points recording her fourth straight, ninth season and 28th overall double figure contest in the home win over Portland on 12/31/09
  - recorded her third straight game in which she has scored in double figures with 12 at Utah State on 12/19/09 marking her eighth double digit contest of the season and 27th overall, also dished out seven assist for season highs in that category
  - picked up a season high 24 points at CS Fullerton on 12/12/09 for her seventh double figure game of the season and her 26th overall, the 24 points were team highs and tied for game highs, also dished out four assists for season highs in that category
  - led all scorers with 18 points at Weber State on 12/9/09 for her sixth double digit game this year and 25th in her career
  - scored 14 points vs. San Francisco on 12/4/09 recording her fifth season and 24th overall double figure outing
  - tied her career-high with eight rebounds and led the team with 13 points vs Kansas State. It was her fourth time scoring in double-figures this season and 23rd time in her career
  - for a third straight time has scored in double figures with 11 points at Montana State on 11/20/09 making it her 22nd overall
  - had her second consecutive game where she's put up double digit numbers with 10 points at Washington on 11/18/09 for her 21st overall and second this season.
  - recorded her first double digit game of the year and 20th overall with 14 points in the season opener victory over UVU.
  - had a team and game high three steals in the win over UVU on 11/13/09

### Kristen Riley:

- picked up her second season and career double double with 12 points and 10 rebounds in the home victory over TCU on 3/6/10, the 10 boards were team highs
- led the team in rebounds with nine in the road game at SDSU on 2/24/10 and also put up 11 points for her 10th season and career double digit game
- put up 11 points in the home win over CSU on 2/17/10 marking her ninth season and career double figure contest and her second straight, in the same game led team and game in rebounds grabbing nine
- scored 10 points in the win at AF on 2/13/10 for her eighth season and career double digit performance, and also tied her season and career highs in steals with three
- picked up her first season and career double double with team highs in points (16) and in rebounds with (11) in the home win over SDSU on 1/23/10, the boards were game highs and career highs while the points marked her seventh season and career double figure outing
- led the team in rebounds for the second straight time with seven in the road game at Wyoming on 1/19/10
- tied her season and career high in rebounds grabbing nine in the road win at CSU on 1/16/10 which were also team highs
- recorded her sixth season and career double figure contest with 17 points in the win vs. Air Force on 1/13/10, the points were also new season and career highs, and also tied her season high in steals with three
- picked up 10 points in the home win vs. Nevada for her fifth season and career double digit performance, and the points also increase her overall points on the year to 98 which surpasses the 97 point total in her freshman year
- led the team in rebounds with nine in the game at Utah State on 12/19/09 for new season and career highs and also tallied 11 points for her fourth season and career double figure outing

- scored 10 points at Weber State on 12/9/09 for her third season and career double digit contest
- picked up season and career highs in points with a team and game high 15 points vs. San Francisco on 12/4/09, marking her second double digit performance of the season and her career
- dished out three assists vs. Kansas State on 11/27/09 for season and career highs
- recorded three steals in the road win at SUU on 11/24/09 for season and career highs in that category
- had 12 points at Montana State on 11/20/09, also grabbed six rebounds and went (.750, 6-8) from the free throw line
- scored eight points in the home opener vs. UVU on 11/13/09 for her second best overall in her career
- grabbed six rebounds in the game vs. Utah Valley which tie for third place in her career in that category

### RESERVES

#### Coriann Wood:

- led the team in scoring with 11 points in game against SDSU on 3/12/10 at the MWC championships in Las Vegas
- dished out four assists in the home win over Utah on 3/3/10 tying her season and career highs in that category
- tied her season and career high in blocked shots with two in the road game at UNM on 2/27/10
- recorded her 16th double figure game of the season and her 25th in her career with 18 points in the road game at San Diego State on 2/24/10, and tied her season and career highs in three pointers made in a game with four
- scored 11 points in the home win over Wyoming on 2/20/10 for her 15th time scoring in double digits this year and the 24th in her career
- led all scorers with 18 points in the home win over CSU on 2/17/10 for her 14th season, 23rd overall and second straight double figure outing
- put up 10 points in the road victory at AF on 2/13/10 marking her 13th season and 22nd overall double figure game
- scored 10 points in the road win at Utah on 1/30/10 for her 12th season and 21st career double digit performance
- was one of five players to score in double figures in the home victory over SDSU on 1/23/10 with 10 points which mark her 11th season and 20th career double figure performances
- led all scorers and picked up new season and career highs in points with 21 in the road win at CSU on 1/16/10 for her ninth season and 18th career double digit outing
- recorded her second double double of the season and her career with 17 points and 10 rebounds, has now scored in double figures in a total of eight games this year, 17 overall and five straight, and the total boards were team and game highs
- had team and game highs in points with 12 vs. Nevada on 1/2/09 marking her seventh double figure game of the year and her 16th overall, and in the same game was perfect from the free throw line (2-2) and from behind the arc (2-2)
- picked up new season and career highs in points with 17 in the home win over Portland on 12/31/09 ... the double digit output is her sixth this year and 15th in her career, the points were team and game highs and she had tallied 15 of the 17 points in the first half of the game
- had her second consecutive game in which she has scored in double figures with 12 at Utah State on 12/19/09 while the points mark her fifth season and 14th career double digit performance ... in the same game was perfect from the free throw line (1.000, 6-6)
- recorded her first ever double double with a season and career high 16 points and 10 boards in the game at CS Fullerton on 12/12/09 ... the 10 rebounds were team and game highs ... the points mark her fourth double digit performance of the season and 13th overall and of the total points scored, nine were from three-point range which are season highs in that category
- in the road game at CS Fullerton dished out two assists for season highs
- led all players grabbing 11 boards in the game at Weber on 12/5/09 for season and career highs in the rebound category
- tied her career- and-season record with two blocks in the game vs. Kansas State and also had two steals for season and career highs
- tied in team and game highs in points with 12 at SUU on 11/24/09 marking her third double figure game of the season and 12th overall
- in the game at Washington on 11/18/09 tied for a team high five rebounds
- scored in double digits for the second straight time with 11 points in the game at Washington on 11/18/09 making it her 11th in her career

- picked up her first double figure game in the 2009-10 season in the game vs. UVU on 11/13/09 scoring 10 points off the bench, marking her 10th overall
- grabbed eight boards in the win vs. Utah Valley on 11/13/09 which were team and game highs in that category

### Alexis Kaufusi

- tallied her ninth season and career double figure contest with 10 points in the home win over TCU on 3/6/10
- scored 11 points in the win over UNLV on 2/6/10 for her eighth season and career double digit outing of the year
- picked up her second double double of the season and career with 10 points and 11 rebounds in the home game vs. New Mexico on 1/27/10, the boards were team highs, tied for game highs, and were the most to date in league play, the 10 points mark her seventh double figure performance of the year
- recorded her sixth season and career double digit outing with 11 points in the road game at Wyoming on 1/19/10
- playing in her first ever MWC game at UNLV on 1/6/10 scored 10 points for her fifth double figure game of the season and career
- in the game at CS Fullerton scored 12 points for her fourth double digit outing of the season and her career
- had three steals in the game vs. San Francisco on 12/4/09 for new season and career highs
- picked up her third double figure scoring game of the season with 12 points vs. San Francisco on 12/4/09
- recorded her first double double of her career and of the season with 12 points and 11 rebounds at SUU on 11/24/09, the points tied for game and team highs as well
- scored 12 points and grabbed nine boards in the game at Montana State on 11/20/09 recording season and career highs in both categories
- came off the bench recording four points on 11/13/09 vs. UVU, in her first collegiate game of her career after red shirting last season

### Dani Peterson:

- came off the bench in the win over AF on 2/13/10 recording six points and three rebounds in 13 minutes of action
- grabbed five boards in the road game at TCU on 2/3/10 which tied for team highs
- dished out two assists in the road win at Utah on 1/30/10 for new season and career highs in that category
- grabbed season and career highs in rebounds with nine at Montana State on 11/20/09 and also scored eight points after coming off the bench for 13 minutes of playing time
- in the first game of the 2009-10 campaign recorded career highs in points with 10 coming off the bench

### Jaime Judkins:

- grabbed two rebounds in the road win at AF on 2/13/10 which are the most in league play to date
- had four steals for new season and career highs in that category in the win vs. Air Force on 1/13/10
- with the four points scored in the home win vs. Nevada on 1/2/10, has tallied a total of 21 points which are the most she has scored in her four year career
- dished out four assists in the win over Hawaii on 12/5/09 for season and career highs
- scored six points all from three-point range in the road game at Montana State on 11/20/09

### Megan Leach:

- grabbed two rebounds for season highs in that category in the road game at UNM on 2/27/10
- was perfect at the line 2-2, had one assist and one block in the road win at AF on 2/13/10
- after playing in the road game at TCU on 2/3/10 has tallied the most blocks and steals in her career with eight and four respectively, and in the same game picked up season and career highs in steals with two
- picked up two blocks in the road win at Utah for new season and career highs in that category

### Marie Beck:

- playing in her 12th game of the season and her fifth league contest scored two points in two minutes coming off the bench in the road win at AFA on 2/13/10

Stephanie Bates:

- in the road game at UNM on 2/27/10 grabbed two rebounds for season and career highs in that category

Kim Parker: (suffered foot injury in the game at Weber State on 12/09/09 and will redshirt rest of season)

- dished out two assists in the game vs. Hawaii on 12/5/09 for season and career highs
- scored five points in the win over Hawaii which tie for season and career highs and also grabbed five rebounds for season and career highs in that category
- tied her season and career high in points with five at SUU on 11/24/09
- scored three points in the road game at Montana State on 11/20/09 and also grabbed four rebounds for season and career highs in that category
- came off the bench to score five points and grabbed one offensive rebound in the road game at Washington on 11/18/09, marking her first points scored in her college career

Jenteal Jackson: (will apply for a medical redshirt year due to an ongoing back injury)

- had two steals at SUU on 11/24/09 which tie for career highs in that category, they are also season highs to date

### 2009-10 Game-by-Game Double Figure Scoring

Opponent	Date	How Many	Player (Points)
vs. Utah Valley	11/13/09	(4)	Nielson (14), Moeaki (14), Peterson (10), Wood (10)
@ Washington	11/18/09	(4)	Hall (14), Moeaki (11), Wood (11), Nielson (10)
@ Montana State	11/20/09	(4)	Hall (12), Riley (12), Kaufusi (12), Nielson (11)
@ Southern Utah	11/24/09	(2)	Wood (12), Kaufusi (12)
vs. Kansas State	11/27/09	(3)	Nielson (13), Foreman (11), Hall (10)
vs. San Francisco	12/4/09	(3)	Riley (15), Nielson (14), Kaufusi (12)
vs. Hawai'i	12/5/09	(2)	Foreman (21), Wood (11)
@ Weber State	12/9/09	(4)	Nielson (18), Moeaki (11), Foreman (11), Riley (10)
@ CS Fullerton	12/12/09	(3)	Nielson (24), Wood (16), Kaufusi (12)
@ Utah State	12/19/09	(3)	Nielson (12), Wood (12), Riley (11)
vs. Portland	12/31/09	(3)	Wood (17), Bonham (13), Hall (10)
vs. Nevada	01/02/10	(3)	Wood (12), Hall (11), Riley (10)
@ UNLV	01/06/10	(4)	Foreman (19), Wood (17), Bonham (11), Hall (10)
vs. Air Force Academy	01/13/10	(2)	Foreman (19), Riley (17)
@ Colorado State	01/16/10	(3)	Wood (21), Foreman (12), Bonham (11)
@ Wyoming	01/19/10	(2)	Hall (11), Kaufusi (11)
vs. San Diego State	01/23/10	(5)	Riley (16), Foreman (13), Bonham (13), Hall (11), Wood (10)
vs. New Mexico	01/27/10	(2)	Bonham (18), Kaufusi (10)
@ Utah	01/30/10	(2)	Hall (24), Wood (10)
vs. UNLV	02/06/10	(4)	Hall (22), Bonham (13), Foreman (11), Kaufusi (11)
@ Air Force Academy	02/13/10	(4)	Foreman (17), Bonham (13), Riley (10), Wood (10)
vs. CSU	02/17/10	(3)	Wood (18), Bonham (14), Riley (11)
vs. Wyoming	02/20/10	(3)	Foreman (13), Hall (12), Wood (11)
@ San Diego State	02/24/10	(4)	Bonham (19), Wood (18), Foreman (12), Riley (11)
vs. Utah	03/03/10	(3)	Hall (13), Bonham (12), Foreman (11)
vs. TCU	03/06/10	(4)	Hall (17), Bonham (12), Riley (12), Kaufusi (10)

#### Note: During the 2008-09 season

- in two games four players scored in double digits;
- in a total of four games three players tallied double digits;
- in 11 games two players had double figures;
- in just one game, five players scored in double figures

#### TRACKING BYU BENCH (AS OF 3/15/10)

📌 The Cougar bench continues to play a key role on the team this season. In points, the BYU bench has scored a total of 456 points to opponents 311. In the rebound category, the Cougar reserves have grabbed a total of 471 boards compared with 320 for the opponents.

📌 In the nonconference games, the most points scored by the BYU bench were 18 vs. SUU on 11/24/09. In that game the Thunderbirds bench scored seven points. In the steals category, the Cougar bench had seven while SUU had none.

📌 In nonconference contests, the Cougar bench grabbed 37 rebounds vs. Hawaii on 12/5/09. The Rainbow Wahine bench grabbed 17, and in that same game BYU had seven assists to Hawaii's five.

📌 At the conclusion of league games, the BYU reserves scored 321 points to 230 for conference foes. In the rebound category, the Cougars grabbed 181 to 132 boards.

### 2009-10 Mountain West Conference

#### 2009-10 Preseason Poll

BYU's women's basketball team was picked to finish sixth in the league race by the MWC Preseason Coaches and Media Poll.

#### 2009-10 Mountain West Conference Preseason Poll

Rk.	Team (1st Place votes)	Points
1	San Diego State (25)	240
2.	TCU (3)	216
3.	Utah	185
4.	New Mexico	168
5.	Wyoming	121
<b>6.</b>	<b>BYU</b>	<b>109</b>
7.	UNLV	97
8.	Colorado State	57
9.	Air Force	31

2009-10 MWC Women's Basketball In NCAA/WNIT		
<b>NCAA</b>		
Mar. 20 (Sat.) In Knoxville	Time (TV)	
No. 8 Dayton vs. No. 9 TCU	2:30 p.m. ET	
<hr/>		
Mar. 21 (Sun.) At Austin	Time (TV)	
No. 6 Texas vs. No. 11 SDSU	6 p.m. CT	
<hr/>		
<b>WNIT</b>		
Mar. 17 (Wed.) In Albuquerque	Time (TV)	
UNM vs. SMU	7 p.m. MT	
<hr/>		
Mar. 18 (Thurs.) In Provo	Time (TV)	
BYU vs. Pepperdine	7 p.m. MT (BYUTV)	
<hr/>		
Mar. 19 (Fri.) In Laramie	Time (TV)	
Wyoming vs. Nevada	7 p.m. MT	
<hr/>		
Mar. 21 (Sun.) In Moraga	Time (TV)	
Utah at St. Mary's (CA)	2 p.m. PT	

2009-10 MWC Women's Basketball		
Standings after MWC Champs. (03/15/10)		
Team (Rank)	Conf. Games	All Games
TCU	12-4	22-8
BYU	11-5	20-9
SDSU	10-6	21-10
Utah	10-6	22-11
Wyoming	9-7	19-11
New Mexico	9-7	18-12
UNLV	6-11	13-18
CSU	5-10	13-17
Air Force	0-16	3-27



### 2009-10 MWC Statistics - BYU in the league - 03/15/10

<b>Team Stats</b>	<b>All Gms</b>	<b>MWC Gms</b>
Scoring Offense.....	4th .....	4th
Scoring Defense.....	2nd .....	4th
Scoring Margin .....	3rd .....	4th
Free Throw %.....	9th .....	5th
Field Goal %.....	2nd .....	3rd
Field Goal % Defense .....	4th .....	5th
3-PT Field Goal %.....	3rd .....	2nd
3-PT Field Goal % Defense .....	4th .....	5th
Rebounding Offense .....	6th .....	8th
Rebounding Defense.....	3rd .....	4th
Rebounding Margin .....	2nd .....	6th
Blocked Shots .....	6th .....	6th
Assists .....	1st .....	1st
Steals.....	3rd .....	5th
Turnover Margin .....	3rd .....	3rd
Assist/Turnover Ratio .....	4th .....	2nd
Offensive Rebounds.....	5th .....	9th
Defensive Rebounds .....	6th .....	4th(t)
Offensive Rebound % .....	3rd .....	9th
Defensive Rebound %.....	3rd .....	3rd
3-PT Field Goals Made .....	2nd .....	2nd

<b>Individual Stats</b>	<b>All Gms</b>	<b>MWC Gms</b>
Scoring .....	17th Bonham (11.3) .....	16th (10.9)
.....	19th Wood (10.2) .....	19th (10.3)
.....	n/a .....	17th Foreman, (10.6)
Rebounding .....	15th Riley (5.7) .....	9th (6.5)
.....	19th Wood (5.3) .....	n/a
Field Goal %.....	6th Riley (.471, 90-191) .....	4th (.481, 51-106)
.....	7th Kaufusi (.470, 79-168) .....	7th (.462, 43-93)
.....	9th Bonham (.460, 131-285) .....	10th (.443, 70-158)
.....	15th Wood (.430, 107-249) .....	12th (.429, 60-140)
Assists .....	4th Hall (4.1) .....	5th (4.1)
.....	6th Bonham (3.8) .....	4th (4.7)
.....	7th Foreman (3.8) .....	7th (3.8)
Steals.....	2nd Hall (2.3) .....	3rd (2.2)
.....	7th Foreman (1.9) .....	6th(t) (1.9)
.....	8th Bonham (1.9) .....	12th(t) (1.7)
3-PT Field Goal %.....	1st Wood (.451, 46-102) .....	2nd(.453, 29-64)
.....	n/a .....	8th (.355, 27-76)
.....	8th Hall (.359, 52-145) .....	6th (.358 29-81)
3-PT Field Goal Made .....	6th Hall (1.8) .....	5th(t) (1.8)
.....	14th Wood (1.6) .....	5th(t) (1.8)
.....	15th Foreman (1.4) .....	9th(t) (1.7)
Blocked Shots .....	10th Wood (0.8) .....	11th (0.8)
Assist/Turnover Ratio .....	3rd Hall (2.0) .....	3rd (1.9)
.....	6th Foreman (1.4) .....	6th (1.5)
.....	8th Bonham (1.2) .....	7th (1.5)
Offensive Rebounds.....	13th Riley (2.2).....	7th (2.7)
Defensive Rebounds .....	n/a .....	14th Riley, (3.8)
.....	15th Wood (3.8) .....	n/a



### Head Coach - Jeff Judkins

**Overall Record:** 177-98

**2009-10:** 20-9, 11-5

Jeff Judkins begins his ninth year as head coach of the women's basketball program, after garnering back-to-back MWC Coach of the Year honors in 2006 and 2007. Prior

to heading up the women's program, he served one year (1999-2000) as Director of Basketball Operations for the BYU men's team. In (2000-2001) he was an assistant coach on the women's team.

In five of the last eight seasons, the Cougar team has participated in postseason tournaments including back-to-back NCAA tournament appearances in 2006 and 2007. This past season BYU compiled a 18-11, 8-8 (t-fifth) record on the year with junior Mindy Nielson garnering two MWC honors on the All-Conference Third Team and on the All-Defensive Team. Graduating seniors and co-captains Shawnee Slade and Cassie King were named Honorable Mention All-MWC. King was also named to the CoSIDA ESPN The Magazine Academic District 8 University Second Team.

The Cougar team recorded back-to-back MWC Regular Season Titles in 2006 and 2007 with players Ambrosia Anderson and Dani Wright being named MWC Co-Players of the Year those same seasons.

During Judkins' fifth season, the 2005-06 campaign, the Cougar squad compiled its best finish in school history with a 26-6 record, clinched its first MWC regular season title since 1992 and received a no. 7 seed in the NCAA tournament, the highest seed for any BYU program.

For the first time since the 2002-03 season, the 2005-06 squad and its 13-1 record to start the year, broke into the women's basketball collegiate polls, ranked no. 23 by the AP Poll and the USA Today/ESPN/WBCA Coaches Poll. They would move up the poll to as high as 18 and 16 in the two respective polls, finishing the year at no. 20. In that same season Judkins picked up his 100th win, a 69-67 victory over CSU on Mar. 2, the same time the team clinched the league's regular season title.

Under Judkins tutelage the women's basketball program has had consistent success with four postseason appearances including three NCAA Championships, guiding the team to its first ever Sweet Sixteen finish in 2002. In 2005, the 19-11 team played in the first round of the WNIT. Judkins has also coached two All-Americans in Erin Thorn and Ambrosia Anderson. Both have gone on to play in the WNBA. Thorn has been with the New York Liberty team for five years while Anderson completed one season with the Liberty team.

The longtime University of Utah coach and player came to Provo with a proven record of success dating back to his high school days at Highland High School in Salt Lake City.

An all-state selection in basketball, football and baseball, Judkins went on to play for the University of Utah from 1974-78.

While playing at Utah, Judkins helped lead the Utes to one conference championship and two berths in the NCAA tournament. He was a second-team academic All-American and three-time District VII academic selection. He also earned three First Team All-WAC honors and was a member of the 1977 United States World Games team that captured the gold medal.

Judkins also played five years in the National Basketball Association for the Boston Celtics, Portland Trailblazers, Detroit Pistons and Utah Jazz. He was a second-round pick of the Celtics in 1978, the same year the Celtics selected Larry Bird with the sixth pick overall.

After his NBA career, he returned to Utah in 1989 and was an instrumental part of the program's success during his 10 years with the program, recruiting such players as Keith Van Horn, Andre Miller, Mike Doleac, Hanno Mottola, Alex Jensen, Trent Whiting, Garner Meads, Jeff Johnsen and Britton Johnsen.

Judkins, graduated from the University of Utah in 1978 with a degree in health and physical education.

He and his wife Mary Kaye are the parents of five children: Jessica (29), {married to Paul}, Jordan (27), Jenna (25), {married to Whitney Neves who was a pole vaulter on the BYU men's track & field team} Jaime (22), and Jaxson (19). Jenna played four years on the volleyball team at BYU.

Hobbies: waterskiing, horseback riding, hunting, golf, softball, listening to music, and watching ESPN.

Judkins Coaching Record			
School	Yrs.	Rec.	Postseason
BYU	2001-02	24-9	NCAA Sweet 16
BYU	2002-03	19-12	NCAA 1st Round
BYU	2003-04	15-14	DNC
BYU	2004-05	19-11	WNIT 1st Round
BYU	2005-06	26-6	NCAA 2nd Round
BYU	2006-07	23-10	NCAA 1st Round
BYU	2007-08	13-16	DNC
BYU	2008-09	18-11	DNC
BYU	2009-10	20-9	

### 2010 WNIT FIRST ROUND OPPONENT

**PEPPERDINE** - The Waves finished the 2010 regular season with a (20-11, 9-5) record, a third place finish in the West Coast Conference and lost to No. 14-ranked Gonzaga in their league championship game. Pepperdine returns two starters, seven letterwinners and was picked to finish third in the WCC behind Gonzaga and Loyola Marymount. When playing on the road they've compiled an 8-6 record. Two players are scoring in double figures for Pepperdine led by 14.8 points from 6-3 forward/center Miranda Ayim who also grabs a team high 6.6 rebounds per game. She's followed by sophomore guard Jazmine Jackson who tallies 11.7 points and 5.6 rebounds per contest. Jackson also has the most assists and steals on the team with 84 and 56 respectively. Head coach Julie Rousseau is in her sixth season at the helm of the women's basketball program at Pepperdine.

#### Pepperdine Probable Starters

No.	Name	Pos.	Ht.	Yr.	PPG	RPG
21	Miranda Ayim	F/C	6-3	Sr	14.8	6.6
15	Skye Barnett	F/G	5-11	So	6.3	4.8
05	Jazmine Jackson	G	5-9	So	11.7	5.6
23	Katie Menton	G	5-10	So	8.8	2.9
32	Lauren Bell	G	5-8	So	9.2	3.1

#### Stat Comparison

Category	BYU	PEP
FG:	.424	.366
3FG:	.355	.295
FT:	.658	.725
Points:	65.6	66.6
Reb:	37.7	37.1

#### Series Information

Overall Series Record: Series is tied 1-1

BYU Record in Provo: N/A

BYU Record in Pepperdine: 0-1

BYU Record in Neutral Sites: 1-0

BYU Record under Jeff Judkins: N/A

BYU Record in Overtime Games: N/A

Longest BYU Win Streak: 1 (1983)

Longest Pepperdine Win Streak: 1 (1979)

Largest BYU Margin of Victory: 20, 98-78 in 1983

Largest Pepperdine Margin of Victory: 1, 67-66 in '79

#### Last Meeting

BYU and Pepperdine have not played each other for 27 years. Their last matchup was on Dec. 9, 1983 when the two were competing in the Long Beach State Tournament. In that game, the Cougars picked up the 98-78 win. In their previous game, the two schools met in Malibu on Dec. 29, 1979 where the Waves recorded the one-point, 67-66 victory.

#### BYU/Pepperdine Connections

The Cougars Mindy Bonham and the Waves T'Keyah Shealy played on the same high school team (Regis Jesuit) for two years. The two also played two summers on the club team Mile High Magic.

#### WHAT'S NEXT -

The winner of Thursday night's game advances to the second round and plays the winner of the game in Tempe between Arizona State and New Mexico State. That contest will be played on Wed. Mar. 17.

### 2009-10 RETURNING PLAYERS

**Jaime Judkins**

**Guard**

**5-6, Senior**

**Salt Lake City, UT - Skyline HS**

**#13**



**At BYU**

**SENIOR - (2009-2010):** grabbed two rebounds in the road win at AF on 2/13/10 which are the most in league play to date ... had four steals for new season and career highs in that category in the win vs. Air Force on 1/13/10 ... with the four points scored in the home win vs. Nevada on 01/2/10 has tallied a total of 21 points which are the most she has scored in in her four year career ... dished out four assists in the win over Hawaii on 12/5/09 for new season and career highs ... in the second road contest of the season at Montana State on 11/20/09, scored six points all from three-point range ... scored three points and grabbed three rebounds in the first game of the season.

**JUNIOR - (2008-2009):** Final player notes: played in a total of 19 games ... was perfect from the line 2-2 for her two points vs. CSU on 1/10/09 which mark the third time on the season where she was perfect from free throw range, the other two games were vs. Oregon on 11/21/08 and at Portland on 1/3/09 ... picked up new season and career highs in points with seven in the game at Portland on 01/03/09 ... finished the year averaging 5.1 minutes of playing time with the most minutes 12 coming vs. the Air Force Academy ... played in 10 regular season contests and in nine league games ... had a total of 17 points, six rebounds and seven assists on the season ... named MWC Academic All-Conference.

**SOPHOMORE - (2007-2008):** Final player notes: played in 26 of the 29 games to date, starting in the game at Sacred Heart on 12/01/07 ... averaged 0.7 points and 0.5 rebounds per game ... picked up season and career highs in points and in rebounds in the game at UCSB on 11/9/07 with five points and three boards ... dished out season highs in assists with three in the contest at Weber State on 12/12/07 ... played an average of 7.0 minutes per game ... named Academic All-MWC.

**FRESHMAN - (2006-2007):** Final player notes: Played in a total of 23 games averaging 3.1 minutes of playing time ... of those 23 contests, eight were against conference opponents and she also saw action in the NCAA first round game vs. Louisville on 03/17/07 ... picked up a season high in points with three in the first game of the year vs. ISU on 11/10/06 ... grabbed a season and career high rebounds with three @ Baylor on 11/16/06 ... dished out a season and career high three assists vs. AF on 02/08/07, and in that same game played a new season and career high 13 minutes.

**Judkins**

**Points:**

**Rebounds:**

**3-PT FG's made:**

**Assists:**

**Steals:**

**Season Highs**

6 @ Washington, 11/20/09

3 vs. UVU, 11/13/09

2 @ Washington, 11/20/09

4 vs. Hawaii @ Hukilau Inv. 12/5/09

**Career Highs**

7 @ Portland, 01/03/09

same, twice more

same

same

1 @ AF, 3/1/08, four more

Judkins Stats										
Yr	G/GS	FG-FGA %	3FG-3FGA %	FT-FTA %	Pts.	Reb.	A.	To.	Bl.	St.
07	23/0	1-6 .167	1-4 .250	2-5 .400	5	13	7	11	0	2
08	26/1	5-26 .192	4-22 .182	4-4 1.000	18	14	18	17	0	5
09	19/0	4-13 .308	3-10 .300	6-7 .857	17	6	7	3	0	3
10	21/0	8-19 .421	4-15 .267	3-5 .600	23	17	15	6	0	6

**Jazmine Foreman**

**Guard**

**5-5, Junior**

**Vancouver, WA - Hudson's Bay HS**

**#3**



**At BYU**

**JUNIOR - (2009-2010):** had 11 points in the home win over Utah on 3/3/10 marking her 12th season and 18th career double figure game ... picked up 12 points for her 11th season and 17th career double figure contest in the road game at SDSU on 2/24/10 ... tallied a team high 13 points in the home victory over Wyoming on 2/20/10 for her 10th season and 16th career double digit scoring output ... led all scorers with 17 points in the road win at Air Force on 2/13/10 marking her ninth season and 15th career double figure game, the points were the third best scoring output in league play to date, the (.600, 6-10) field goal percentage is the best this year and in her career, also had five steals which are the most in league action to date ... recorded her first season and career double double with 11 points and 11 assists in the win vs. UNLV on 2/6/10, the 11 assists were team and game highs, the double digit scoring is her eighth season and 14th overall ... was one of five players scoring in double figures in the home victory over SDSU on 1/23/10 with 13 points for her seventh season and 13th overall, in the same game grabbed nine boards for new season highs which also tie for career highs ... picked up her sixth double digit contest of the year with 12 points in the road win at CSU on 1/16/10 which is also her 12th career double figure outing, in the same game dished out a team and game high six assists which also tie for season highs in that category ... scored in double figures for the fifth time this season and 11th career with 19 points in the league home win over the Air Force on 1/13/10, 15 of the them were from making five 3-pointers which were also new season and career highs in that category, the total points were team and game highs ... led all scorers with 19 points in the league win at UNLV on 1/6/10 recording her fourth double figure game of the season and her 10th in her career ... with the six assists in the home win over Nevada ties her season high in that category and also ties the number of assists she dished out her freshman season with 43 ... dished out six assists in the home game vs. Portland tying her season high in the assist category ... in the game at Utah State on 12/19/09 dished out a season high six assists ... picked up her third double figure game of the year and ninth career with 11 points at Weber State on 12/9/09 and also tallied six steals for season and career highs in that category ... scored a season and career high 21 points in the win over Hawaii on 12/5/09, and the points were team and game highs, they mark her eighth career double figure outing and her second this season ... of the 21 points scored in the Hawaii game, 12 were from three-point range while the four treys were season and career high in three pointers made in a game ... in the game vs. Hawaii led the team in steals with five and were also team and game highs ... dished out a season high five assists in the win over San Francisco on 12/4/09 ... recorded 11 points in the home game vs. Kansas State on 11/27/09 for her first double digit performance of the season and her seventh overall, also grabbed season highs in rebounds with five ... grabbed four boards at Montana State on 11/20/09 for season highs in that category ... grabbed two rebounds, had one point, one assist and one steal in the first road game of the season at Washington on 11/18/09 ... started in the first game of the year vs. UVU on 11/13/09 scoring seven points and dishing out two assists.

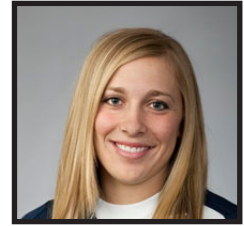
**SOPHOMORE - (2008-2009):** Final player notes: Started in all but the first game of the year ... recorded her sixth season and career double digit contest with 11 points in the game at Utah on 2/28/09 ... led the team in points with 10 vs. AFA on 2/4/09 marking her fifth double-digit scoring performance of the season and career ... had back-to-back league games where she grabbed six rebounds, vs. Utah on 1/28/09 and at Wyoming on 1/31/09 ... led the team and game in points with 16 vs. UNM on 1/17/09 marking her fourth double digit performance of the year and career ... grabbed a team, season, and career high nine boards in the road win at TCU on 1/13/09 ... scored a season and career high 19 points vs. USC on 12/6/08 to lead all scorers, she also had a team and game high six assists and she was perfect from the free-throw line 4-4, two of those points sealed the Cougar victory over the Trojans in the final seconds of the contest ... the 19 points marked her third double figure performance of the season... dished out eight assists vs. Wright St., on 12/5/08 for new season highs ... led or tied the team in assists in a total of 17 games and in steals in six contests ... ranks first in the assist category with 113 and second in steals with 42, four of those coming vs. Weber St., on 12/10/08 for season and career highs ... finishes the sophomore season ranked fourth in a total of five categories: points 6.8; field goals made with 70; free throws made with 36; rebounds, grabbing 4.0 per game ... and in defensive boards with a total of 90 for a 3.1 average ... ranks third in two categories: field goal attempts with 219 for a 7.6 average; three-point field goals made with 24 ... places second in the three-point field goal attempts category with 88 and a 3.0 average ... ranks fifth in the free throw attempts category with a total of 43 for a 1.5 average ... has the squads second best free throw percentage at .744 (32-43) ... had back-to-back double digit scoring performances, 12 at Portland St., and 10 at Nevada ... in MWC action finished the year in third place in the assists category in all games and in league play, placed in 10th place in all games in the steals category (1.45), and fourth and third respectively in all games and league action in the assists/turnover ratio category.

<b>Foreman</b>	<b>Season Highs</b>	<b>Career Highs</b>
<b>Points:</b>	21 vs. Hawaii @ Hukilau Inv., 12/5/09	same
<b>Rebounds:</b>	9 vs. San Diego St., 1/23/10	same, once more
<b>3-PT FG's made:</b>	5 vs. AFA, 1/13/10	same
<b>Assists:</b>	11 vs. UNLV, 2/6/10	same
<b>Steals:</b>	6 @ Weber State, 12/9/09	same

<b>Foreman Stats</b>										
<b>Yr</b>	<b>G/GS</b>	<b>FG-FGA %</b>	<b>3FG-3FGA %</b>	<b>FT-FTA %</b>	<b>Pts.</b>	<b>Reb.</b>	<b>A.</b>	<b>To.</b>	<b>Bl.</b>	<b>St.</b>
<b>08</b>	<b>29/9</b>	<b>17-75 .227</b>	<b>8-36 .222</b>	<b>8-16 .500</b>	<b>50</b>	<b>28</b>	<b>43</b>	<b>50</b>	<b>0</b>	<b>11</b>
<b>09</b>	<b>29/28</b>	<b>70-219 .320</b>	<b>24-88 .273</b>	<b>32-43 .744</b>	<b>196</b>	<b>115</b>	<b>113</b>	<b>82</b>	<b>1</b>	<b>42</b>
<b>10</b>	<b>29/29</b>	<b>94-220 .427</b>	<b>42-108 .389</b>	<b>49-62 .790</b>	<b>279</b>	<b>95</b>	<b>109</b>	<b>77</b>	<b>5</b>	<b>56</b>

**Haley Hall**  
**Guard**  
**5-4, Junior**  
**Syracuse, UT - Clearfield HS**

**#33**



**At BYU**

**JUNIOR - (2009-2010):** had a team high 17 points in the home victory vs. TCU on 3/6/10 for her second straight, 12th season and 15th career double figure outing and also tied her season and career high in steals with five ... had 11 points in the home win over Utah on 3/3/10 marking her 12th season and 18th career double figure game ... put up 12 points in the home win over Wyoming on 2/20/10 for her 10th season and 13th career double digit game, in that same contest had five steals which tie for season and career highs to date ... dished out nine assists for season and career highs in that category in the home win over CSU on 2/17/10 ... had four steals in the road win at Air Force on 2/13/10 which are the most in league action to date ... led all scorers with 22 points in the home win over UNLV on 2/6/10 recording her ninth season and 12th double digit performance of the year ... picked up season and career highs in points and in rebounds with 24 and nine respectively in the road win at Utah on 1/30/10, the points were game and team highs and they marked her eighth season and 11th career double figure outing, in the same game she made 10 three pointers which are season, career, team and game highs, she also shot (.693, 9-13) from the field and (.666, 6-9) from three point range both of which are season and career bests ... was one of five players to put up double figure points in the home victory over SDSU on 1/23/10 with 11 points recording her seventh season and 11th career double digit outing ... in the road game at Wyoming on 1/19/10 picked up her sixth season and 10th career double digit outing with 11 points ... playing in her third MWC game of the 2010 campaign, picked up five points, five rebounds and five assists in the road win at CSU on 1/16/10 ... grabbed six rebounds in the home win vs. Nevada on 1/2/10 for new season and career highs in that category, also scored 11 points for her fifth season and ninth career double figure contest .... scored 10 points vs. Portland on 12/31/09 recording her fourth this season and eighth in her career and also grabbed five rebounds tying her season and career high in that category ... tied season and career highs in rebounds at Utah State with five ... picked up 10 points vs. Kansas St., on 11/27/09 for her seventh in her career ... recorded season and career highs in steals with five in the road game at SUU on 11/24/09 ... for the second straight time scored in double digits with 12 at Montana State on 11/20/09 for her fifth career outing and second this year, all of the points came from three-point range ... led the team in points with 14 at Washington on 11/18/09 for season highs, also grabbed a career high five rebounds in that same contest, and the points were one shy of her career of 15 which she scored at Stanford on 11/13/06 ... started in the first contest of the year dishing out a team and game high eight assists which are also career highs.

**SOPHOMORE - (2008-2009):** Started in the first game of the year at Portland St., on 11/14/08, tallying 11 points and was 6-6 at the free throw line ... suffered a season-ending ACL injury to her right knee with a minute left in the same game ... did not play the rest of the season ... named MWC Academic All-Conference.

**(2007-08):** Injury redshirt

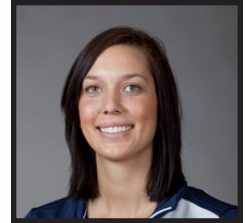
**FRESHMAN - (2006-2007):** Final player notes: Suffered season ending injury with a torn ACL to her left knee in the game @ New Mexico State on 12/06/06 ... Had played in all games to date ... picked up a season and career 15 points @ No. 4 Stanford on 11/10/06 to lead all scorers in that game ... had four three-pointers in the same game ... scored in double figures in two games to date (15) @ Stanford, (10) @ Harvard.

Hall	Season Highs	Career Highs
Points:	24 @ Utah, 1/30/10	same
Rebounds:	9 @ Utah, 1/30/10	same
3-PT FG's made:	6 @ Utah, 1/30/10	same
Assists:	9 vs. CSU, 02/17/10	same
Steals:	5 vs. TCU, 3/06/10	same, twice more
Blocks:	2 vs. Air Force, 1/13/10	same

		Hall Stats								
Yr	G/GS	FG-FGA %	3FG-3FGA %	FT-FTA %	Pts.	Reb.	A.	To.	Bl.	St.
07	7/0	15-39 .385	9-20 .450	5-8 .625	44	12	17	19	1	6
08	Injury redshirt									
09	1/1	2-9 .222	1-3 .333	6-6 1.000	11	3	4	5	0	4
10	29/29	94-256 .367	52-145 .359	13-20 .650	253	108	120	60	5	67

**Megan Marks Leach**  
**Forward**  
**6-2, Junior**  
**South Jordan, UT - Bingham HS**

**#55**



**At BYU**

**JUNIOR - (2009-2010):** grabbed two rebounds for season highs in that category in the road game at UNM on 2/27/10 ... was perfect at the line 2-2, had one assist and one block in the road win at AF on 2/13/10 ... after seeing playing time in the road game at TCU has tallied the most blocks and steals in her career with eight and four respectively, in that same game picked up season and career highs in steals with two ... picked up two blocks in the road win at Utah on 1/30/10 for new season and career highs in that category ... has seen playing time in 12 games to date including the game against SDSU in the semifinals of the MWC tournament on 3/12/10 ... played 12 minutes in the first game of the 2009-10 season grabbing three defensive rebounds, had one block and one steal in the same game.

**SOPHOMORE - (2008-2009):** Final player notes: played in a total of 16 games off the bench ... of those 16 contests eight were non conference and eight were league games ... dished out new career and season highs in assists with three vs. SDSU on 2/25/09 ... grabbed new season and career highs in the rebound category with six at Portland on 01/03/09 ... scored eight points in the game vs. SUU on 11/28/08 for new season and career highs in that category, and was a perfect 4-4 from the field ... with the eight points she surpassed last year's total points by two to 10 ... averaged 4.9 minutes of playing time with the most minutes coming in the game vs. SUU on 11/28/08 when she played for 11 minutes ... in three games she played 10 minutes at Portland, vs. the Air Force Academy and vs. San Diego State ... recorded a total of 26 rebounds and 23 points in her second season.

**FRESHMAN - (2007-2008):** Final player notes: played in 14 of the 29 games on the year ... averaged 3.9 minutes of playing time ... picked up season and career high in points with three in the game at Wyoming on 3/5/08 ... grabbed four rebounds in two games, at Wyoming on 3/5/08 and vs. Fresno State on 11/17/07 ... had a season and career high two blocks @ Utah on 2/19/08 ... played the most minutes (17) @ Wyoming on 3/5/08 ... named Academic All-MWC.

**Leach**

**Points:**

**Rebounds:**

**3-PT FG's made:**

**Assists:**

**Steals:**

**Blocks:**

**Season Highs**

2 @ AFA, 2/13/10

2 @ UNM, 2/27/10

2 @ AFA, 2/13/10

2 @ TCU, 2/3/10

2 @ Utah, 1/30/10

**Career Highs**

8 vs. SUU, 11/28/08

6 @ Portland, 01/03/09

1 @ Wyoming, 03/05/08

3 vs. SDSU, 2/25/09

same

2 same, once more

		Leach Stats								
Yr	G/GS	FG-FGA %	3FG-3FGA %	FT-FTA %	Pts.	Reb.	A.	To.	Bl.	St.
08	14/0	3-13 .231	1-6 .167	1-3 .333	8	14	1	2	4	0
09	16/0	9-18 .500	2-4 .500	3-8 .375	23	26	7	11	2	2
10	12/0	0-14 .000	0-6 .000	4-5 .800	4	12	2	3	9	4

### Keilani Moeaki

Forward

6-2, Junior

Warrenville, IL - Weaton Warrenville HS

# #45



#### At BYU

**JUNIOR - (2009-2010):** had three blocks in the home victory over Wyoming on 2/20/10 for season and career highs ... tied her season high in points with nine in league play in the road win at AF on 2/13/10, also dished out three assists and three steals which are season highs and tie for career highs ... led the team in points with nine in the road game at TCU on 2/3/10 ... scored 11 points at Weber State on 12/9/09 recording her third season and 11th career double figure outing, and also had a season high in rebounds grabbing seven ... picked up her second double figure contest of the season with 11 points and her 10th overall in the game at Washington on 11/18/09 ... started in the season opener recording 14 points for her first double figure game of the year and her ninth career ... in the same game grabbed four offensive rebounds

**SOPHOMORE - (2008-2009):** Final player notes: started in all but four contests, starting with the SDSU game on 2/25/09 ... with a team and game high 13 points in the road game at Wyoming on 1/31/09 she now has five double digit contests this season and eight in her career ... recorded 12 points in the home game vs. Utah for her fourth this year and her seventh overall double digit performance ... grabbed eight boards vs. Utah St., which mark new season and career bests ... picked up 14 points at Nevada for new season highs ... led or tied the team in points and in rebounds in two contests on the year ... topped or tied the team in blocked shots in a total of 10 games ... places first on the squad in blocked shots with 19 ... finishes ranked third in the field goal percentage category .406, 63-155 ... grabbed 40 offensive boards which puts her in fourth place in that category ... in the field goals made category with a 63 total for a 2.2 average ... recorded 22 steals in all games placing sixth in that category ... ranks seventh in the rebound category grabbing 2.8 boards per contest ... in the MWC placed 13th and 12th respectively in the blocked shots category in all games and in league play.

**FRESHMAN - (2007-2008):** Final player notes: played in all 29 games and started in nine ... averaged 16.4 minutes of playing time per game ... picked up a season and career high 19 points and seven rebounds vs. Hartford on 11/20/07, in that same game was .700 (7-10) from the free throw line, and had three steals for season and career highs ... finished ranked sixth in scoring on the team with 3.6 points and tied for fourth place in the rebound category, grabbing 2.9 boards per contest ... was perfect from the free throw line 4-4 at USU on 12/29/07 ... ranked third in offensive rebounds with 33 (1.1) ... placed fourth in three categories on the team: field goal percentage .433 (39-90), free throw attempts 40 (1.4) and free throws made 20 (0.9) ... ranked seventh on the team at the end of the year in free throw percentage .650 (26-40).

#### Moeaki

Points:

Rebounds:

3-PT FG's made:

Assists:

Steals:

Blocks:

#### Season Highs

14 vs. UVU, 11/13/09

7 @ Weber St., 12/9/09

3 @ Air Force, 02/13/10

3 @ Air Force, 02/13/10

3 vs. Wyoming, 2/20/10

#### Career Highs

19 vs. Hartford, 11/20/07

8 vs. Utah State, 12/13/08

1 vs. Utah, 1/19/08

same, three more

same, four more

same

#### Moeaki Stats

Yr	G/GS	FG-FGA	%	3FG-3fGA	%	FT-FTA	%	Pts.	Reb.	A.	To.	Bl.	St.
08	29/9	39-90	.433	1-2	.500	26-40	.650	105	84	26	70	7	8
09	29/25	63-155	.406	4-17	.235	24-37	.649	154	81	18	64	19	22
10	29/29	53-121	.438	7-17	.412	22-36	.611	135	63	28	45	8	11



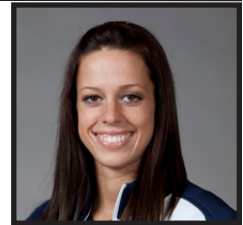
**Mindy Bonham (Nielson)**

**Guard**

**5-10, Junior**

**Centennial, CO - Regis Jesuit HS**

**#22**



**At BYU**

**JUNIOR - (2009-10):** scored 12 points in the home victory over TCU on 3/6/10 for her second straight, 19th season and 38th overall double digit performance, also had nine assists which tie for season and career highs ... tallied 12 points in the home win over Utah on 3/3/10 marking her 18th season and 37th overall double figure contest, in the same game tied her season and career high in steals with six and they were also team and game highs ... led the team in points with 19 in the road game at SDSU on 2/24/10 for her 17th season and 36th double digit scoring performance, she also shot (.727, 8-11) from the field for season and career bests in that category ... had 14 points in the home win over CSU on 2/17/10 for her 16th season, 35th career and third straight double figure game ... scored 13 points in the road win at AF marking her 15th season and 34th career double-digit outing ... put up 13 points in the home victory over UNLV on 2/6/10 for her 14th season and 33rd career double digit outing ... grabbed eight boards in the road win at Utah on 1/30/10 which tie for season and career highs ... led all scorers with 18 points in the home game vs. New Mexico on 1/27/10 recording her 13th season, 32nd career and second straight double figure outing, the 18 were also the most in league play to date ... was one of five players who tallied double digits in the home victory over SDSU on 1/23/10 with 13 points for her 12th season and 31st career outing ... recorded her 11th season and 30th career double digit performance with 11 points in the road win at CSU on 1/16/10 ... dished out nine assists for the second straight time in the home win over Air Force on 1/13/10, the assists were also team and game highs ... scored 11 points and dished out nine assists in the win over the Rebels on 1/6/10 for her 10th double digit performance of the year and her 29th overall, the nine assists are new season highs and tie for career highs and were team and game highs ... picked up her ninth double figure game of the season and 28th career with 13 points vs. Portland on 12/31/09 and also making it her fourth straight ... scored 12 points for team highs in the road game at Utah State on 12/19/09 for her eighth double digit game of the season and her 27th overall and it was her third straight game in which she has scored in double digits, also dished out seven assists for new season highs ... picked up season highs in points with 24 in the road game at CS Fullerton marking her seventh double figure contest of the season and her 26th overall, the points were team highs and tied for game highs, also dished out a season high in assists with four ... led all scorers with 18 points at Weber State on 12/9/09 for her sixth double digit game this year and 25th in her career ... scored 14 points in the game vs. San Francisco on 12/4/09 marking her fifth season and 24th career double figure game ... tied her career-high with eight rebounds and led the team with 13 points vs. Kansas St., on 11/27/09 marking the fourth time scoring in double figures this season and 23rd in her career ... for a third straight time scored in double figures with 11 points at Montana State on 11/20/09 making it her 22nd overall ... picked up her second consecutive double digit outing with 10 points in the game at Washington on 11/18/09 marking her 21st overall and second this year ... started in the first game of the season where she scored 14 points, dished out two assist and had three steals.

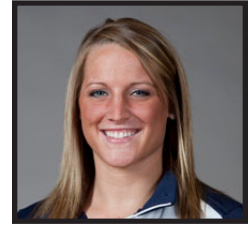
**SOPHOMORE - (2008-2009):** Final player notes: started in all games ... named to the All-MWC Third Team and to the All-Defensive Team ... scored 11 points in the game at AFA on 3/7/09 for her 12th and 18th season and career double figure game which also mark four straight double digit contests ... led the team in scoring with 14 points in the contest at Utah on 2/28/09 marking her 10th double digit game of the year and 17th overall ... recorded her ninth double digit game of the year and 16th overall with a team high 13 points in the home win vs. UNLV on 2/21/09 ... tallied a team and game high four steals in the road game at Wyoming on 1/31/09 ... had new season and career highs in steals with six in the road win at UNLV on 1/21/09 ... in that same game posted 21 points to lead all scorers, and mark her eighth double figure game of the year and 15th career ... grabbed eight boards in the home game vs. UNM on 1/17/09 for new season and career highs in that category ... scored a team and game high 22 points in the road win at TCU on 1/13/09 for the second best scoring performance of the season and career ... the 22 points also marked her seventh and 14th career double digit output ... led the team and game in scoring with 13 vs. Arkansas St., on 12/30/08 for her sixth double digit contest of the year and the 13th in her career ... grabbed a total of seven boards for new season highs and tied her career high as well in the home win vs. CSU ... tallied 12 points in the game at Long Beach St., for her fifth double figure game of the year and 12th career ... tied her season best seven assists vs. Utah St., ... contributed 11 points in the home win against Weber St., on 12/10/08 marking her fourth double figure contest of the year and 11th overall ... scored 20 points vs. Wright State for her third double digit output of the season and her 10th overall ... tallied new season and career highs in points with 27 at Nevada ... the 27 points were game and team highs as well ... was 9-10 from the free throw line in that same game ... leads the team in scoring and in steals with 10.4 points and a total of 65 steals ... is second in assists dishing out 93 this year ... has the best free throw percentage on the team .787, (37-47) ... topped or tied the list in points in a total of 10 games; in assists in 11 contests; and in steals in 14 games ... finishes the year ranked first in both field goals attempted and made with 313 and 123 respectively ... ranks fourth on the squad in four categories: field goal percentage .393, 123-313; in three-point field goals attempted 83; three-point field goals made with 20; free throw attempts with 47 for a 1.6 average per game ... places second in the free throw made category with a total of 37 and a 1.3 average ... had a total of 16 blocked shots which put her in third place in that category., is also in third place in defensive boards with 92 for a 3.2 average ... and finishes in the fifth spot in rebounds with a total of 114 for a 3.9 average ... in the MWC finished her sophomore season with a 19th and 16th place finish in scoring in all games and in league play, ended ranked 15th in league games in field goal percentage .399 (67-168), in the assists category ranked seventh and ninth respectively in all contests and in MWC games, placed third and first in the steals category in all games and in MWC contests, and ranked fifth in all games in the assist/turnover ratio category.

<b>Bonham (Nielson)</b>	<b>Season Highs</b>	<b>Career Highs</b>
<b>Points:</b>	24 @ CS Fullerton, 12/12/09	27 @ Nevada, 11/18/08
<b>Rebounds:</b>	8 @ Utah, 1/30/10	same, twice more
<b>3-PT FG's made:</b>		3 @ UNLV, 2/16/08, once more
<b>Assists:</b>	9 vs. TCU, 3/6/10, twice more	same, twice more
<b>Steals:</b>	6 vs. Utah, 03/03/10	same, twice more
<b>Blocks:</b>	2 @ CS Fullerton, 12/12/09	5 vs. Utah Valley, 12/08/07

Bonham (Nielson) Stats													
Yr	G/GS	FG-FGA	%	3FG-3FGA	%	FT-FTA	%	Pts.	Reb.	A.	To.	Bl.	St.
08	29/19	74-200	.370	17-58	.293	46-65	.708	211	85	80	95	20	46
09	29/29	123-313	.393	20-83	.241	37-47	.787	303	114	93	69	16	65
10	29/29	131-289	.453	25-72	.347	41-51	.804	328	119	112	89	7	54

**Coriann Wood**  
**Forward**  
**6-1, Junior**  
**Basin City, WA - Cornell HS**

### #23



**At BYU**

**JUNIOR - (2009-10):** led the team in points with 11 in the game vs. SDSU at the MWC Championships on 3/12/10 for her 17 season and 26th career double digit outing ... dished out four assists in the home win over Utah on 3/3/10 tying her season and career highs in that category ... tie her season and career high in blocked shots with two in the road game at UNM on 2/27/10 ... recorded her 16th double figure game of the season and her 25th in her career with 18 points in the road game at San Diego State on 2/24/10, and tied her season and career highs in three pointers made in a game with four ... scored 11 points in the home win over Wyoming on 2/20/10 for her 15th time scoring in double digits this year and the 24th in her career ... led all scorers with 18 points in the home win over CSU on 2/17/10 for her 14th season, 23rd overall and second straight double figure outing ... put up 10 points in the road victory at AF on 2/13/10 marking her 13th season and 22nd overall double figure game ... scored 10 points in the road win at Utah on 1/30/10 for her 12th season and 21st career double digit performance ... was one of five players to score in double figures in the home victory over SDSU on 1/23/10 with 10 points which mark her 11th season and 20th career double figure performances ... led all scorers and picked up new season and career highs in points with 21 in the road win at CSU on 1/16/10 for her ninth season and 18th career double digit outing ... recorded her second double double of the season and career at UNLV on 1/6/10 with 17 points and 10 rebounds, has now scored in double figures in a total of eight games this year, 17 overall and five straight, the total boards were team and game highs ... scored 12 points for team and game highs in the home win vs. Nevada on 1/2/10 which mark the seventh and 16th double digit outing of her career and in that same contest was perfect from both the free throw line (2-2) and from behind the arc (2-2) ... picked up new season and career highs in points with 17 vs. Portland on 12/31/09 recording her six double digit outing of the year and her 15th overall, the points were also team and game highs and she had scored 15 of the 17 points in the first half of the game ... scored 12 points in the road game at Utah State on 12/19/09 recording her fifth double figure contest of the season and her 14th overall, was perfect from the free throw line going (6-6) and it was her second consecutive double figure contest of the season to date ... picked up her first double double of her career with 16 points and 10 rebounds in the road game at CS Fullerton on 12/12/09 marking her fourth double digit performance this season and her 13th overall, the 16 points were season and career highs, and of the total points, nine were from three-point range which are season highs ... in the CS Fullerton game also dished out two assists for season highs to date ... led all players grabbing 11 boards in the game at Weber State on 12/9/09 for season and career highs in the rebound category ... grabbed nine boards in the game vs. Hawaii on 12/5/09 which tie for season and career highs ... tied her career-and-season record with two blocks in the game vs. Kansas St., 11/27/09 and also had two steals for season and career highs ... tied for team and game highs in points with 12 at SUU on 11/24/09 for her third double digit outing of the season and her 12th overall, the points are also season highs to date ... scored 11 points in the road game at Washington on 11/18/09 for her second straight double figure contest of the year and 11th in her career ... came off the bench to score 10 points in the home opener vs. UVU on 11/13/09 marking her first double figure contest of the season and her 10th overall ... grabbed a team and game high eight boards in that same game.

**SOPHOMORE - (2008-2009):** Final player notes: played in all games, starting in three vs. SDSU on 2/25/09; at Utah and vs. Wyoming ... scored 13 points in the home win vs. UNLV on 2/21/09, her sixth double digit performance of the year and seventh overall ... grabbed nine boards for team, season, and career-highs vs. AF on 2/4/09 ... tallied six rebounds in each of the last two MWC games, vs. Utah on 1/28/09 and at Wyoming on 1/31/09 ... recorded a team high 13 points in the home game vs. Utah for her seventh double digit contest of the year and her eighth overall, and in that same game dished out new season and career highs in assists with three ... tied season highs in both assists and steals with two each vs. CSU on 1/10/09 ... had two blocks for new season and career highs in that category in the home win vs. CSU on 01/10/09 ... grabbed new season and career highs in the rebound category with eight vs. USC, on 12/06/08 ... recorded her sixth double figure game of the year and seventh career with 10 points in the game at Long Beach St., ... has a total of five double digit scoring performances on the year and six overall with the 13 points scored vs. Utah St., on 12/13/08 ... the points mark three back-to-back double figure games with the 15 vs. Weber St., (which were season and career highs) and 14 vs. USC ... in the home game vs. SUU on 11/28/08 scored 10 points which at that time tied her season high ... in the game at Nevada on 11/18/08 tied her career highs in rebounds with five ... in the home game vs. UConn was perfect from the line 4-4 ... is in second place on the team in rebounds grabbing 4.8 boards per contest ... is in fifth place on the team in points scoring 6.4 per contest ... has the team's best three-point field goal percentage (.330, 30-90) ... led or tied in the rebound category in a total of six contests and in blocked shots in three ... ended the season ranked first in four categories: three-point field goal attempts with 90; three-point field goals made with 30; free throw attempts with 51 for a 1.8 average; free throws made with a total of 37 for a 1.3 average ... places second in two: three-point percentage .333, 30-90; defensive board grabbing 102 for a 3.5 average ... attempted 186 field goals which places her in fourth place in that category ... ranks fifth in three categories: offensive rebounds with 37; assists with 19; steals with 22 ... in the MWC tied for 13th place in the three-point field goal percentage category in all games ... named MWC Academic All-Conference.

Wood	Season Highs	Career Highs
Points:	21 @ CSU, 1/16/10	same
Rebounds:	11 @ Weber State, 12/9/09	same
3-PT FG's made:	3 @ CS Fullerton, 12/12/09	same, once more
Assists:	3 @ Air Force, 02/13/10	same, once more
Steals:		2 vs. CSU, 01/10/09, once more
Blocks:	2 @ UNM, 02/27/10, once more	same, three more

Yr	G/GS	Wood Stats								
		FG-FGA %	3FG-3FGA %	FT-FTA %	Pts.	Reb.	A.	To.	Bl.	St.
08	27/1	31-94 .330	10-47 .213	20-22 .909	92	63	7	29	5	7
09	29/3	60-186 .323	30-90 .333	37-51 .725	187	139	19	43	9	22
10	29/0	107-248 .431	46-103 .447	36-49 .735	296	154	27	49	23	11

**Marie Beck**  
**Guard**  
**5-8, Junior**  
**Oxnard, CA - Channel Islands HS**

**#31**



**At BYU**

**JUNIOR - (2009-10):** has seen action in a total of 15 games ... playing in her 12th game of the season and her fifth league contest scored two points in two minutes coming off the bench in the road win at AFA on 2/13/10 ... in the second road game of the season at Montana State on 11/20/09 scored a three pointer for her first points of the season after playing just two minutes ... played four minutes in the home opener of the year vs. UVU on 11/13/09.  
**SOPHOMORE - (2008-2009):** Saw action in three contests during the season; in the game at Long Beach State on 12/20, and the two home MWC games against the Air Force Academy on 2/4/09 and San Diego State on 2/2/09 ... averaged nearly two minutes of playing time in each game.  
**FRESHMAN - (2007-08):** Saw action in three games on the year ... received an MWC Scholar Athlete Award.

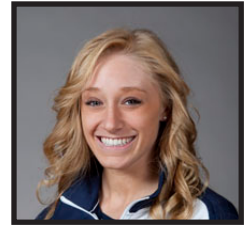
**Before BYU**

School Valedictorian, Ventura County Star Athlete ... AP Scholar ... Top Honors Scholar ... Three-year letterwinner in basketball ... MVP in 2007 ... Athlete of the Year in 2007 ... Second Team All League in 2006 ... First Team All League 2007 ... Second Team All County 2007 ... four-year letterwinner in softball ... three time softball MVP 2005-2007.

		Beck Stats									
Yr	G/GS	FG-FGA %	3FG-3FGA %	FT-FTA %	Pts.	Reb.	A.	To.	Bl.	St.	
08	3/0	0-0 .000	0-1 .000	0-0 .000	0	1	0	0	0	0	
09	3/0	0-1 .000	0-1 .000	1-2 .500	1	2	0	0	0	0	
10	15/0	3-8 .429	1-4 .250	0-0 .000	7	6	1	8	0	1	

**Stephanie Buhler Bates**  
**Forward**  
**6-0, Sophomore**  
**Oregon City, OR - Oregon City HS**

**#21**



**At BYU**

**SOPHOMORE - (2009-10):** in the road game at UNM on 2/27/10 grabbed two rebounds for season and career highs in that category ... has played in 15 of the 29 games to date including the game against SDSU on 3/12/10 at the MWC Championships in Las Vegas ... made her first three pointer of the season at SUU on 11/24/09 ... saw nine minutes of action in the road game at Montana State on 11/20/09 ... played six minutes in the home game vs. UVU on 11/13/09.

**FRESHMAN - (2008-2009):** Final player notes: played in 19 games off the bench ... of those games six were nonconference and 13 were MWC contests ... tied her season and career highs in points with nine at UNLV on 3/10/09 at the 2009 MWC Champs., all coming from three-point range ... tied her season and career highs in treys with three in the game at UNLV on 3/10/09 at the 2009 MWC Champs ... picked up six points in the game at Portland on 01/03/09 ... in that same game had two steals for season and career highs as well ... scored two points in the game at Long Beach St., ... averaged 5.6 minutes of playing time, with 16 minutes being the most at Portland during the nonconference schedule and 13 minutes at UNLV at the MWC Championships ... ranks fifth in three-point field goals made with 12 ... finishes in sixth place on the team in the three-point percentage category .308, 12-39 ... recorded a total of 45 points for a 2.4 average ... was perfect from the free throw line in a total of three contests ... made three three-pointers in two contests vs. TCU and at UNLV in the MWC Championships.

**FRESHMAN - (2007-2008):** Redshirt

**Before BYU**

Four-year letterwinner in basketball ... competed one year at Sandy HS where she garnered Honorable Mention honors. At Oregon City HS ...team was Three Rivers League Champions all three seasons ... named Second Team All- League her senior year ... ranks third all time in three-point shooting ... is also tops in the free throw category ... garnered Second Team All League honors during the 2006-07 season ... ranks second in state as a three-point shooter ... two-time Honorable Mention All State ... named Oregonian Athlete of the Week ... named to the All-Tournament Team at the Delaware and the Gillett, Wyoming Classics ... in state high school competition, the 2004-05 team finished third ... in 2005-06 team finished second and in 2006-07 team ended the year in sixth place ... Played on two club teams (Triple Threat Oregon two years) ... and on (Clutch Players for three years)

**Bates**

**Points:**

**Rebounds:**

**3-PT FG's made:**

**Assists:**

**Season Highs**

2 @ UNM, 2/27/10

**Career Highs**

9 @ UNLV, 03/10/09, once more

same

3 @ UNLV, 03/10/09, once more

1 vs. UConn on 11/25/08

		Bates Stats									
Yr	G/GS	FG-FGA %	3FG-3FGA %	FT-FTA %	Pts.	Reb.	A.	To.	Bl.	St.	
09	19/0	15-43 .349	12-39 .308	3-3 1.000	45	3	8	11	3	6	
10	15/0	3-15 .200	3-15 .200	1-2 .500	10	8	2	4	0	1	

**Dani Peterson**  
**Forward**  
**6-1, Sophomore**  
**Salt Lake City, UT - Skyline HS**

### #32



**At BYU**

**SOPHOMORE - (2009-10):** came off the bench in the win over AF on 2/13/10 recording six points and three rebounds in 13 minutes of action ... grabbed five rebounds in the road game at TCU on 2/3/10 which tied for team highs ... dished out two assists in the road win at Utah on 1/30/10 for new season and career highs in that category ... has played in 27 of 29 games so far this year ... had one block in the road contest at Utah State on 12/19/09 ... grabbed season and career highs in rebounds with nine at Montana State on 11/20/09 and also scored eight points after coming off the bench for 13 minutes of playing time ... in the first road game of the season at Washington on 11/13/09 saw eight minutes of action where she grabbed one rebounds ... came off the bench to score 10 points in the home opener on 11/13/09 vs. UVU marking her first double figure contest of her career and of the season ... the 10 points scored vs. UVU mark season and career highs.

**FRESHMAN - (2008-2009):** Final player notes: played in 16 games off the bench, of those contests eight were nonconference and eight were MWC contests ... came off the bench to score eight points, all in the first half in the home win vs. UNLV on 2/21/09 for season and career bests in the points category ... in that same game recorded two blocks for season and career highs ... scored four points for her fourth four-point performance of the year at SDSU on 01/24/09 ... grabbed a new season and career high five boards at Portland on 1/03/09 ... tied her season best four points at Long Beach St., on 12/20/08 ... picked up four points and four in the home opener against Oregon on 11/21/08 ... averaged 6.8 minutes of playing time, playing a season high 13 minutes in three contests, at SDSU; vs. UNLV and vs. SDSU ... recorded a total of 32 points and 24 rebounds ... was perfect from the line 2-2 in three games at Long Beach St., vs. CSU and at SDSU ... named MWC Academic All-Conference.

**Before BYU:** Four-year letterwinner in basketball ... two-time team MVP ... four-year starter ... team captain in 2007-08 ... named 2008 Utah Gatorade Player of the Year ... team won 5A Championship in 2006 and 2008 and finished second in 2007 ... named 5A Tournament MVP ... current state record-holder in individual field goal percentage with 64.8 (140-216) in 2006-07 season ... three-time Salt Lake Tribune 5A First Team All State ... two-time 5A All Tournament Team ... 2008 Deseret Morning News 5A MVP ... two-time Deseret Morning News Second Team All State ... 2008 McDonald's All-America nominee ... 2007 End of the Trail All-Tournament Team ... 2007 Adidas All-American Camp All-Star ... 2005 Pacific Coast Shootout All-Tournament Team ... played for the Salt Lake Metro Basketball Club in 2006 and 2007 and with the Utah Storm Basketball Club in 2005 ... three-year letterwinner in soccer ... team captain in 2007-08 season.

Peterson	Season Highs	Career Highs
Points:	10 vs. UVU, 11/13/09	same
Rebounds:	9 @ Montana State, 11/20/09	same
3-PT FG's made:		
Assists:	2 @ Utah on 1/30/10	same
Steals:		
Blocks:	1 @ Utah State, 12/19/09	2 vs. UNLV, 2/21/09

		Peterson Stats											
Yr	G/GS	FG-FGA	%	3FG-3FGA	%	FT-FTA	%	Pts.	Reb.	A.	To.	Bl.	St.
09	16/0	11-36	.306	0-2	.000	10-14	.714	32	24	0	7	5	3
10	27/0	39-102	.382	1-15	.067	7-16	.438	86	67	8	20	9	5

**Kristen Riley**  
**Forward**  
**6-3, Sophomore**  
**San Clemente, CA - San Clemente HS**

### #35



**At BYU**

**SOPHOMORE - (2009-10):** picked up her second season and career double double with 12 points and 10 rebounds in the home victory over TCU on 3/6/10, the 10 boards were team highs ... led the team in rebounds with nine in the road game at SDSU on 2/24/10 and also put up 11 points for her 10th season and career double digit game ... put up 11 points in the home win over CSU on 2/17/10 marking her ninth season and career double figure contest and her second straight, in the same game led team and game in rebounds grabbing nine ... scored 10 points in the win at AF on 2/13/10 for her eighth season and career double digit performance and also tied her season and career highs in steals with three ... picked up her first season and career double double with team highs in points (16) and in rebounds with (11) in the home win over SDSU on 1/23/10, the boards were game highs and career highs while the points marked her seventh season and career double figure outing ... grabbed seven boards in the league game at Wyoming on 1/19/10 to lead the team for the second straight game in the rebound category ... led the team in rebounds with nine in the road win at CSU on 1/16/10 which also tie for season highs in that category ... recorded new season and career highs in points with 17 in the home win over Air Force on 1/13/10 which mark her sixth season and career double figure outing and she also tied her season and career high in steals with three... with the 10 points scored in the home win over Nevada on 1/2/10 her overall points total is at 98 which surpasses the total of 97 points scored her freshman season, while the points mark her third season and career double figure outing ... grabbed season and career highs in the rebound category with nine in the game at Utah State on 12/19/09 which were also team highs and in that same contest tallied 11 points ... scored 15 points vs. San Francisco on 12/4/09 for her second best scoring output of the year, the points were also team and game highs and mark her second double figure game of the season and her career ... dished out three assists vs. Kansas St., on 11/27/09 for season and career highs ... at SUU on 11/24/09 recorded season and career highs in steals with three ... tallied 12 points at Montana State on 11/20/09, also grabbed six rebounds and went (.750, 6-8) from the free throw line ... scored six points and grabbed three boards in the road game at Washington on 11/18/09 ... started in the first contest of the season vs. UVU on 11/13/09 making it her second start overall ... scored eight points and grabbed six rebounds in the home opener vs. UVU.

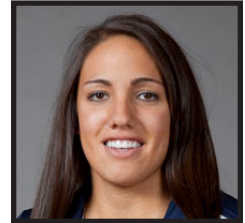
**FRESHMAN - (2008-2009):** Final player notes: played in all games and started in her first college game at AFA on 3/7/09 ... Named the MWC Preseason Freshman of the Year in the Preseason 2008-09 MWC Poll ... at TCU on 1/13/09 tied a season high in assists with two ... grabbed a team high eight rebounds @ SDSU on 1/24/09 for new season and career highs ... had seven boards at Portland on 01/03/09 ... has had four games where she has grabbed five rebounds ... in the home game vs. SUU on 11/28/08 scored nine points for new season and career highs, was 4-6 from the field ... in the home game vs. Oregon on 11/21/08 scored four points ... ranks sixth on the team in the rebound category grabbing 3.7 boards per game ... finished her freshman season leading or tying in the rebound category in a total of six games ... led or tied in blocked shots in nine games on the season ... ranks second in blocked shots with 17 ... places third in the offensive rebound category grabbing a total of 48 for a 1.7 average ... was perfect from the free throw line in three contests ... finished the year with a total of 105 rebounds and 97 points ... in the MWC placed 15th in the blocks category for all games.

Riley	Season Highs	Career Highs
Points:	17 vs. Air Force, 1/13/10	same
Rebounds:	11 vs. San Diego St., 1/23/10	same
3-PT FG's made:	2 vs. UVU, 11/13/09	same
Assists:	3 vs. Kansas St., 11/27/09	same
Steals:	3 @ Air Force, 2/13/10, three more	same, three more
Blocks:		3 @ SDSU, 01/24/09

Riley Stats											
Yr	G/GS	FG-FGA	%	3FG-3FGA	%	FT-FTA	%	Pts.	Reb.	A. To.	Bl. St.
09	29/1	34-105	.324	5-23	.217	24-42	.571	97	105	18 44	17 20
10	29/29	91-193	.472	13-47	.277	43-76	.566	238	165	38 55	18 33

**Alexis Kaufusi**  
**Forward/Center**  
**6-1, Freshman**  
**Provo, UT - Timpview HS**

### #10



**At BYU**

**FRESHMAN - (2009-10):** tallied her ninth season and career double figure contest with 10 points in the home win over TCU on 3/6/10 ... scored 11 points in the win over UNLV on 2/6/10 for her eighth season and career double digit outing of the year ... picked up her second double double of the season and career with 10 points and 11 rebounds in the home game vs. New Mexico on 1/27/10, the points were her seventh season and career double digit outing, the boards were team highs, tied for game highs, tied for season highs and were the most in league play to date ... recorded her sixth season and career double figure game with 11 points in the MWC game at Wyoming on 1/19/10 ... in the first league game of the season at UNLV on 1/6/10 scored 10 points for her fifth season and career double digit output ... scored in double figures for the fourth time this season with 12 points at CS Fullerton on 12/12/09 which once again tie for season and career highs in points ... tied her season and career high in points with 12 vs. San Francisco on 12/4/09 marking her third double figure game of the season and her career ... recorded her first double double of her career and of the season with 12 points and 11 rebounds at SUU on 11/24/09, the 12 points tied for team and game highs ... scored 12 points and grabbed nine boards in the game at Montana State on 11/20/09 recording season and career highs in both categories ... picked up season and career highs in points with five and in rebounds with three at Washington on 11/18/09 ... came off the bench to play in her first collegiate game vs. UVU on 11/13/09 in which she scored four points.

**(2008-09):** Redshirt

**Before BYU:** Four-year letterwinner in basketball ... Region Champs in 2007 and 2008 and was undefeated in 2008 ... two-time team MVP ... team captain ... two-time All-Region honoree ... two-time All-Valley accolades ... First Team All-State in 2007 and 2008 ... named state MVP... two-year letterwinner in soccer ... one year letterwinner in softball ... academic high school Honor Roll ... played three years for the Salt Lake Metro Club Team, 2006-2008.

Kaufusi	Season Highs	Career Highs
Points:	12 @ CS Fullerton, 12/12/09, three more	same, three more
Rebounds:	11 vs. New Mexico, 1/27/10, once more	same, once more
3-PT FG's made:		
Assists:	2 @ Montana State, 11/20/09	same
Steals:		
Blocks:	2 vs. New Mexico, 1/27/10, twice more	same, twice more

Kaufusi Stats													
Yr	G/GS	FG-FGA	%	3FG-3FGA	%	FT-FTA	%	Pts.	Reb.	A.	To.	Bl.	St.
10	29/0	80-168	.476	1-1	1.000	37-63	.587	198	134	8	58	13	12

**THE STAT CREW SYSTEM**  
**Brigham Young University Combined Team Statistics (as of Mar 12, 2010)**  
**All games**

<b>RECORD:</b>	<b>OVERALL</b>	<b>HOME</b>	<b>AWAY</b>	<b>NEUTRAL</b>
ALL GAMES	20-9	10-2	8-6	2-1
CONFERENCE	11-5	7-1	4-4	0-0
NON-CONFERENCE	9-4	3-1	4-2	2-1

##	Player	gp-gs	min	Total		3-Point		F-Throw		Rebounds				pf	dq	a	to	blk	stl	pts	avg	
				avg	fg-fga	fg%	3fg-fga	3fg%	ft-fa	ft%	off	def	tot									avg
22	BONHAM, Mindy	29-29	957	33.0	131-289	.453	25-72	.347	41-51	.804	38	81	119	4.1	54	1	112	89	7	54	328	11.3
23	WOOD, Coriann	29-0	671	23.1	107-248	.431	46-103	.447	36-49	.735	47	107	154	5.3	82	3	27	49	23	11	296	10.2
03	FOREMAN, Jazmine	29-29	905	31.2	94-220	.427	42-108	.389	49-62	.790	20	75	95	3.3	76	2	109	77	5	56	279	9.6
33	HALL, Haley	29-29	942	32.5	94-256	.367	52-145	.359	13-20	.650	29	79	108	3.7	68	2	120	60	5	67	253	8.7
35	RILEY, Kristen	29-29	629	21.7	91-193	.472	13-47	.277	43-76	.566	63	102	165	5.7	73	2	38	55	18	33	238	8.2
10	KAUFUSI, Alexis	29-0	467	16.1	80-168	.476	1-1	1.000	37-63	.587	47	87	134	4.6	48	0	8	58	13	12	198	6.8
45	MOEAKI, Keilani	29-29	511	17.6	53-121	.438	7-17	.412	22-36	.611	28	35	63	2.2	46	0	28	45	8	11	135	4.7
32	PETERSON, Dani	27-0	283	10.5	39-102	.382	1-15	.067	7-16	.438	29	38	67	2.5	34	0	8	20	9	5	86	3.2
04	PARKER, Kim	8-0	102	12.8	8-19	.421	4-11	.364	4-7	.571	7	11	18	2.3	11	0	5	10	1	5	24	3.0
01	JACKSON, Jenteal	6-0	40	6.7	2-10	.200	1-5	.200	3-8	.375	2	4	6	1.0	6	0	4	2	0	3	8	1.3
13	JUDKINS, Jaime	21-0	160	7.6	8-19	.421	4-15	.267	3-5	.600	8	9	17	0.8	7	0	15	6	0	6	23	1.1
21	BATES, Stephanie	15-0	86	5.7	3-15	.200	3-15	.200	1-2	.500	2	6	8	0.5	7	0	2	4	0	1	10	0.7
31	BECK, Marie	15-0	32	2.1	3-8	.375	1-4	.250	0-0	.000	4	2	6	0.4	4	0	1	8	0	1	7	0.5
55	LEACH, Megan	12-0	65	5.4	0-14	.000	0-6	.000	4-5	.800	0	12	12	1.0	5	0	2	3	9	4	4	0.3
Team											53	68	121				9					
Total.....		29	5850		713-1682	.424	200-564	.355	263-400	.658	377	716	1093	37.7	521	10	479	495	98	269	1889	65.1
Opponents.....		29	5850		569-1514	.376	131-444	.295	393-568	.692	336	662	998	34.4	396	-	328	523	56	210	1662	57.3

<b>TEAM STATISTICS</b>	<b>BY</b>	<b>OPP</b>	<b>Date</b>	<b>Opponent</b>	<b>Score</b>	<b>Att.</b>
SCORING	1889	1662	11-13-09	UT VALLEY WOLVERINES	W 73-51	954
Points per game	65.1	57.3	11/18/09	at Washington	L 66-67	1773
Scoring margin	+7.8	-	11/20/09	at Montana State	W 79-54	1627
FIELD GOALS-ATT	713-1682	569-1514	11/24/09	at Southern Utah	W 72-39	438
Field goal pct	.424	.376	11/27/09	KANSAS STATE	L 62-65	937
3 POINT FG-ATT	200-564	131-444	12/04/09	vs USF	W 72-60	73
3-point FG pct	.355	.295	12/5/09	vs UH	W 81-44	65
3-pt FG made per game	6.9	4.5	12-09-09	at Weber State	Lo2 61-62	547
FREE THROWS-ATT	263-400	393-568	12/12/09	at Cal State Fullerton	W 75-72	145
Free throw pct	.658	.692	12/19/09	at Utah State	W 61-48	594
F-Throws made per game	9.1	13.6	12-31-09	PORTLAND PILOTS	W 69-57	627
REBOUNDS	1093	998	1-02-10	NEVADA WOLFPACK	W 61-41	532
Rebounds per game	37.7	34.4	*H 01/06/10	at UNLV	W 71-61	749
Rebounding margin	+3.3	-	* 01-13-10	AIR FORCE ACADEMY	W 77-46	739
ASSISTS	479	328	* 01/16/10	at Colorado State	W 67-58	1210
Assists per game	16.5	11.3	* 1/19/10	at Wyoming Cowgirls	L 54-69	3123
TURNOVERS	495	523	* 01/23/10	SAN DIEGO ST AZTECS	W 73-63	974
Turnovers per game	17.1	18.0	* 01/27/10	NEW MEXICO LOBOS	L 57-60	775
Turnover margin	+1.0	-	* 01/30/10	at Utah	W 69-52	3155
Assist/turnover ratio	1.0	0.6	* 02/03/10	at TCU	L 40-64	2328
STEALS	269	210	* 02/06/10	UNLV REBELS	W 76-60	896
Steals per game	9.3	7.2	* 02/13/10	at Air Force	W 78-53	210
BLOCKS	98	56	* 2/17/10	COLORADO STATE	W 72-54	807
Blocks per game	3.4	1.9	* 2/20/10	WY	W 51-48	1147
ATTENDANCE	11552	28824	* 2-24-10	at San Diego State	L 71-73	713
Home games-Avg/Game	12-963	14-1784	* 2/27/10	at New Mexico	L 30-62	8360
Neutral site-Avg/Game	-	3-1284	* 3/3/2010	UTAH UTES	W 54-37	1783
Score by Periods	1st	2nd	OT	OT2	Totals	
Brigham Young Univer	947	930	6	6	1889	
Opponents	765	884	6	7	1662	
						* = Conference game



**THE STAT CREW SYSTEM**  
**Brigham Young University Combined Team Statistics (as of Mar 12, 2010)**  
**Conference games**

<b>RECORD:</b>	<b>OVERALL</b>	<b>HOME</b>	<b>AWAY</b>	<b>NEUTRAL</b>
ALL GAMES	11-5	7-1	4-4	0-0
CONFERENCE	11-5	7-1	4-4	0-0
NON-CONFERENCE	0-0	0-0	0-0	0-0

##	Player	gp-gs	min	Total		3-Point		F-Throw		Rebounds				pf	dq	a	to	blk	stl	pts	avg	
				fg-fga	fg%	3fg-fga	3fg%	ft-fa	ft%	off	def	tot	avg									
22	BONHAM,Mindy	16-16	561	35.1	70-158	.443	13-38	.342	22-31	.710	17	51	68	4.3	27	1	75	51	3	27	175	10.9
03	FOREMAN,Jazmine	16-16	534	33.4	56-140	.400	27-76	.355	30-34	.882	9	42	51	3.2	44	1	61	41	3	31	169	10.6
23	WOOD,Coriann	16-0	385	24.1	60-140	.429	29-64	.453	16-23	.696	21	56	77	4.8	41	2	21	24	12	9	165	10.3
33	HALL, Haley	16-16	548	34.2	56-151	.371	29-81	.358	9-12	.750	18	51	69	4.3	39	1	65	35	5	35	150	9.4
35	RILEY,Kristen	16-16	366	22.9	51-106	.481	8-25	.320	24-35	.686	43	61	104	6.5	43	2	20	29	8	22	134	8.4
10	KAUFUSI, Alexis	16-0	269	16.8	43-93	.462	1-1	1.000	21-36	.583	17	44	61	3.8	27	0	3	29	8	4	108	6.8
45	MOEAKI,Keilani	16-16	263	16.4	23-56	.411	3-7	.429	12-16	.750	6	20	26	1.6	24	0	15	20	6	6	61	3.8
32	PETERSON,Dani	14-0	147	10.5	17-47	.362	1-7	.143	2-4	.500	14	16	30	2.1	16	0	5	8	4	2	37	2.6
31	BECK,Marie	7-0	14	2.0	2-4	.500	0-1	.000	0-0	.000	1	1	2	0.3	2	0	1	1	0	0	4	0.6
21	BATES,Stephanie	6-0	24	4.0	1-5	.200	1-5	.200	0-0	.000	0	3	3	0.5	1	0	1	1	0	0	3	0.5
55	LEACH,Megan	6-0	26	4.3	0-4	.000	0-2	.000	2-3	.667	0	4	4	0.7	3	0	2	2	5	2	2	0.3
13	JUDKINS,Jaimie	11-0	63	5.7	1-6	.167	0-5	.000	0-1	.000	2	2	4	0.4	1	0	5	2	0	4	2	0.2
Team											31	40	71				6					
Total.....		16	3200		380-910	.418	112-312	.359	138-195	.708	179	391	570	35.6	268	7	274	249	54	142	1010	63.1
Opponents.....		16	3200		315-834	.378	84-274	.307	211-309	.683	188	385	573	35.8	204	-	200	276	31	113	925	57.8

<b>TEAM STATISTICS</b>	<b>BY</b>	<b>OPP</b>	<b>Date</b>	<b>Opponent</b>	<b>Score</b>	<b>Att.</b>
SCORING	1010	925	*H 01/06/10	at UNLV	w 71-61	749
Points per game	63.1	57.8	* 01-13-10	AIR FORCE ACADEMY	w 77-46	739
Scoring margin	+5.3	-	* 01/16/10	at Colorado State	w 67-58	1210
FIELD GOALS-ATT	380-910	315-834	* 1/19/10	at Wyoming Cowgirls	L 54-69	3123
Field goal pct	.418	.378	* 01/23/10	SAN DIEGO ST AZTECS	w 73-63	974
3 POINT FG-ATT	112-312	84-274	* 01/27/10	NEW MEXICO LOBOS	L 57-60	775
3-point FG pct	.359	.307	* 01/30/10	at Utah	w 69-52	3155
3-pt FG made per game	7.0	5.3	* 02/03/10	at TCU	L 40-64	2328
FREE THROWS-ATT	138-195	211-309	* 02/06/10	UNLV REBELS	w 76-60	896
Free throw pct	.708	.683	* 02/13/10	at Air Force	w 78-53	210
F-Throws made per game	8.6	13.2	* 2/17/10	COLORADO STATE	w 72-54	807
REBOUNDS	570	573	* 2/20/10	WY	w 51-48	1147
Rebounds per game	35.6	35.8	* 2-24-10	at San Diego State	L 71-73	713
Rebounding margin	-0.2	-	* 2/27/10	at New Mexico	L 30-62	8360
ASSISTS	274	200	* 3/3/2010	UTAH UTES	w 54-37	1783
Assists per game	17.1	12.5	* 3/6/2010	TC HORNED FROGS	w 70-65	1381
TURNOVERS	249	276	* = Conference game			
Turnovers per game	15.6	17.3				
Turnover margin	+1.7	-				
Assist/turnover ratio	1.1	0.7				
STEALS	142	113				
Steals per game	8.9	7.1				
BLOCKS	54	31				
Blocks per game	3.4	1.9				
ATTENDANCE	8502	19848				
Home games-Avg/Game	8-1063	8-2481				
Neutral site-Avg/Game	-	0-0				

<b>Score by Periods</b>	<b>1st</b>	<b>2nd</b>	<b>Totals</b>
Brigham Young Univer	493	517	1010
Opponents	416	509	925

**THE STAT CREW SYSTEM**  
**Brigham Young University Team Game-by-Game (as of Mar 15, 2010)**  
**All games**

**TEAM STATISTICS**

Opponent	Date	Score		Total		3-Pointers		Free throws		Rebounds				pf	a	t/o	blk	stl	pts	avg
				fg-fga	pct	3fg-fga	pct	ft-fa	pct	off	def	tot	avg							
UT VALLEY WOLVERINES	11-13-09	73-51	W	29-74	.392	9-30	.300	6-13	.462	26	20	46	46.0	25	21	14	4	12	73	73.0
at Washington	11/18/09	66-67	L	21-42	.500	10-18	.556	14-26	.538	8	24	32	39.0	26	12	31	0	9	66	69.5
at Montana State	11/20/09	79-54	W	25-51	.490	8-14	.571	21-36	.583	15	35	50	42.7	19	12	18	3	10	79	72.7
at Southern Utah	11/24/09	72-39	W	30-65	.462	7-18	.389	5-7	.714	12	32	44	43.0	16	12	17	7	20	72	72.5
KANSAS STATE	11/27/09	62-65	L	24-60	.400	7-21	.333	7-12	.583	20	20	40	42.4	18	13	17	3	7	62	70.4
vs USF	12/04/09	72-60	W	29-59	.492	6-19	.316	8-11	.727	12	25	37	41.5	16	21	17	2	11	72	70.7
vs UH	12/5/09	81-44	W	30-60	.500	12-28	.429	9-14	.643	17	27	44	41.9	20	23	18	2	8	81	72.1
at Weber State	12-09-09	61-62	Lot	24-67	.358	3-14	.214	10-22	.455	22	25	47	42.5	26	11	28	5	11	61	70.8
at Cal State Fullerton	12/12/09	75-72	W	27-55	.491	7-16	.438	14-19	.737	13	28	41	42.3	16	15	22	4	3	75	71.2
at Utah State	12/19/09	61-48	W	23-57	.404	5-18	.278	10-17	.588	15	27	42	42.3	20	18	18	2	9	61	70.2
PORTLAND PILOTS	12-31-09	69-57	W	30-74	.405	6-24	.250	3-5	.600	15	22	37	41.8	15	20	6	4	8	69	70.1
NEVADA WOLFPACK	1-02-10	61-41	W	21-53	.396	7-18	.389	12-15	.800	12	22	34	41.2	17	16	21	7	14	61	69.3
at UNLV	01/06/10	71-61	W	27-65	.415	8-26	.308	9-12	.750	15	25	40	41.1	15	20	11	0	7	71	69.5
AIR FORCE ACADEMY	01-13-10	77-46	W	33-55	.600	8-17	.471	3-7	.429	8	19	27	40.1	12	29	13	8	18	77	70.0
at Colorado State	01/16/10	67-58	W	23-54	.426	8-16	.500	13-19	.684	12	23	35	39.7	17	16	21	1	12	67	69.8
at Wyoming Cowgirls	1/19/10	54-69	L	22-58	.379	1-12	.083	9-10	.900	11	21	32	39.2	22	12	11	2	8	54	68.8
SAN DIEGO ST AZTECS	01/23/10	73-63	W	24-55	.436	5-15	.333	20-23	.870	16	23	39	39.2	13	18	24	3	9	73	69.1
NEW MEXICO LOBOS	01/27/10	57-60	L	22-51	.431	4-19	.211	9-14	.643	10	29	39	39.2	20	13	14	4	4	57	68.4
at Utah	01/30/10	69-52	W	25-53	.472	10-25	.400	9-12	.750	8	30	38	39.2	20	18	16	4	7	69	68.4
at TCU	02/03/10	40-64	L	16-62	.258	5-22	.227	3-3	1.000	16	14	30	38.7	13	11	16	5	10	40	67.0
UNLV REBELS	02/06/10	76-60	W	30-62	.484	11-25	.440	5-9	.556	9	26	35	38.5	19	28	10	3	5	76	67.4
at Air Force	02/13/10	78-53	W	31-58	.534	7-16	.438	9-11	.818	8	19	27	38.0	18	20	11	3	18	78	67.9
COLORADO STATE	2/17/10	72-54	W	28-65	.431	9-19	.474	7-11	.636	12	33	45	38.3	13	21	16	4	7	72	68.1
WY	2/20/10	51-48	W	19-53	.358	6-15	.400	7-14	.500	10	27	37	38.2	21	8	15	6	8	51	67.4
at San Diego State	2-24-10	71-73	L	26-57	.456	8-19	.421	11-13	.846	13	20	33	38.0	10	16	17	3	6	71	67.5
at New Mexico	2/27/10	30-62	L	9-49	.184	4-19	.211	8-17	.471	11	26	37	38.0	16	7	18	5	3	30	66.1
UTAH UTES	3/3/2010	54-37	W	19-54	.352	10-25	.400	6-7	.857	12	25	37	38.0	17	14	18	2	10	54	65.6
TC HORNERED FROGS	3/6/2010	70-65	W	26-59	.441	8-22	.364	10-13	.769	8	31	39	38.0	22	23	18	1	10	70	65.8
vs #3 San Diego State	03/12/10	47-77	L	20-55	.364	1-14	.071	6-8	.750	11	18	29	37.7	19	11	19	1	5	47	65.1
Brigham Young University		1889		713-1682	.424	200-564	.355	263-400	.658	377	716	1093	37.7	521	479	495	98	269	1889	65.1
Opponents		1662		569-1514	.376	131-444	.295	393-568	.692	336	662	998	34.4	396	328	523	56	210	1662	57.3

Games played: 29  
Points/game: 65.1  
FG Pct: 42.4  
3FG Pct: 35.5  
FT Pct: 65.8

Rebounds/game: 37.7  
Assists/game: 16.5  
Turnovers/game: 17.1  
Assist/turnover ratio: 1.0  
Steals/game: 9.3  
Blocks/game: 3.4

**THE STAT CREW SYSTEM**  
**Brigham Young University Team Game-by-Game Comparison (as of Mar 15, 2010)**  
**All games**

<b>Opponent</b>	<b>1st</b>	<b>2nd</b>	<b>Score</b>	<b>Mar</b>	<b>Total FG</b>	<b>FG Pct</b>	<b>3-Pointers</b>	<b>3FG Pct</b>	<b>Free Throws</b>	<b>FT Pct</b>	<b>Rebounds</b>	<b>Assist</b>	<b>T/Over</b>	<b>Block</b>	<b>Steal</b>	<b>Fouls</b>
UT VALLEY WOLVERINES	45/26	28/25	73-51	+22	29-74/15-41	.392/.366	9-30/1-11	.300/.091	6-13/20-23	.462/.870	46/32 +14	21/4	14/22	4/1	12/2	25/15
Washington	34/30	32/37	66-67	(1)	21-42/23-58	.500/.397	10-18/2-6	.556/.333	14-26/19-27	.538/.704	32/30 +2	12/12	31/22	0/4	9/12	26/22
Montana State	38/29	41/25	79-54	+25	25-51/22-70	.490/.314	8-14/3-21	.571/.143	21-36/7-14	.583/.500	50/36 +14	12/7	18/16	3/1	10/9	19/22
Southern Utah	48/24	24/15	72-39	+33	30-65/14-50	.462/.280	7-18/4-15	.389/.267	5-7/7-13	.714/.538	44/33 +11	12/9	17/25	7/5	20/7	16/6
KANSAS STATE	25/30	37/35	62-65	(3)	24-60/23-49	.400/.469	7-21/10-19	.333/.526	7-12/9-12	.583/.750	40/26 +14	13/9	17/15	3/2	7/5	18/16
USF	41/20	31/40	72-60	+12	29-59/22-51	.492/.431	6-19/6-13	.316/.462	8-11/10-21	.727/.476	37/30 +7	21/12	17/16	2/1	11/8	16/11
UH	48/16	33/28	81-44	+37	30-60/16-54	.500/.296	12-28/3-14	.429/.214	9-14/9-17	.643/.529	44/32 +12	23/9	18/20	2/3	8/6	20/15
Weber State	17/23	32/26	61-62	(1)	24-67/20-45	.358/.444	3-14/1-5	.214/.200	10-22/21-30	.455/.700	47/31 +16	11/13	28/22	5/0	11/8	26/16
Cal State Fullerton	28/29	47/43	75-72	+3	27-55/24-62	.491/.387	7-16/7-20	.438/.350	14-19/17-20	.737/.850	41/28 +13	15/8	22/9	4/0	3/6	16/20
Utah State	30/31	31/17	61-48	+13	23-57/17-46	.404/.370	5-18/1-9	.278/.111	10-17/13-22	.588/.591	42/30 +12	18/9	18/19	2/2	9/8	20/15
PORTLAND PILOTS	40/29	29/28	69-57	+12	30-74/19-55	.405/.345	6-24/3-10	.250/.300	3-5/16-18	.600/.889	37/46 (9)	20/7	6/19	4/4	8/3	15/8
NEVADA WOLFPACK	31/18	30/23	61-41	+20	21-53/12-48	.396/.250	7-18/1-14	.389/.071	12-15/16-19	.800/.842	34/38 (4)	16/8	21/28	7/0	14/10	17/14
UNLV	32/22	39/39	71-61	+10	27-65/22-53	.415/.415	8-26/5-18	.308/.278	9-12/12-17	.750/.706	40/36 +4	20/12	11/17	0/2	7/2	15/14
AIR FORCE ACADEMY	41/22	36/24	77-46	+31	33-55/19-53	.600/.358	8-17/3-9	.471/.333	3-7/5-8	.429/.625	27/33 (6)	29/9	13/22	8/0	18/4	12/12
Colorado State	38/25	29/33	67-58	+9	23-54/23-49	.426/.469	8-16/4-15	.500/.267	13-19/8-14	.684/.571	35/30 +5	16/12	21/26	1/1	12/10	17/17
Wyoming Cowgirls	30/27	24/42	54-69	(15)	22-58/21-52	.379/.404	1-12/12-27	.083/.444	9-10/15-23	.900/.652	32/42 (10)	12/17	11/17	2/1	8/5	22/12
SAN DIEGO ST AZTECS	33/31	40/32	73-63	+10	24-55/26-57	.436/.456	5-15/2-12	.333/.167	20-23/9-15	.870/.600	39/27 +12	18/18	24/20	3/3	9/11	13/17
NEW MEXICO LOBOS	29/35	28/25	57-60	(3)	22-51/18-54	.431/.333	4-19/7-17	.211/.412	9-14/17-26	.643/.654	39/34 +5	13/14	14/6	4/3	4/8	20/13
Utah	32/21	37/31	69-52	+17	25-53/17-52	.472/.327	10-25/3-12	.400/.250	9-12/15-24	.750/.625	38/33 +5	18/10	16/13	4/0	7/8	20/11
TCU	21/26	19/38	40-64	(24)	16-62/21-46	.258/.457	5-22/5-13	.227/.385	3-3/17-20	.000/.850	30/41 (11)	11/16	16/20	5/3	10/7	13/11
UNLV REBELS	33/30	43/30	76-60	+16	30-62/18-60	.484/.300	11-25/6-26	.440/.231	5-9/18-21	.556/.857	35/43 (8)	28/11	10/16	3/0	5/5	19/10
Air Force	37/27	41/26	78-53	+25	31-58/19-48	.534/.396	7-16/6-19	.438/.316	9-11/9-15	.818/.600	27/34 (7)	20/10	11/26	3/0	18/6	18/14
COLORADO STATE	36/25	36/29	72-54	+18	28-65/20-54	.431/.370	9-19/5-17	.474/.294	7-11/9-15	.636/.600	45/33 +12	21/14	16/15	4/4	7/7	13/11
WY	25/22	26/26	51-48	+3	19-53/12-43	.358/.279	6-15/7-20	.400/.350	7-14/17-28	.500/.607	37/37 -	8/7	15/17	6/2	8/8	21/14
San Diego State	38/36	33/37	71-73	(2)	26-57/28-57	.456/.491	8-19/5-14	.421/.357	11-13/12-18	.846/.667	33/31 +2	16/19	17/13	3/4	6/9	10/9
New Mexico	11/30	19/32	30-62	(32)	9-49/20-61	.184/.328	4-19/6-23	.211/.261	8-17/16-17	.471/.941	37/49 (12)	7/12	18/8	5/3	3/9	16/15
UTAH UTES	29/14	25/23	54-37	+17	19-54/12-43	.352/.279	10-25/2-13	.400/.154	6-7/11-20	.857/.550	37/35 +2	14/6	18/22	2/5	10/7	17/9
TC HORNEF FROGS	28/23	42/42	70-65	+5	26-59/19-52	.441/.365	8-22/6-19	.364/.316	10-13/21-28	.769/.750	39/35 +4	23/13	18/18	1/0	10/7	22/15
#3 San Diego State	29/44	18/33	47-77	(30)	20-55/27-51	.364/.529	1-14/5-13	.071/.385	6-8/18-23	.750/.783	29/33 (4)	11/21	19/14	1/2	5/13	19/12

Note: Game totals are displayed in the format TEAM/OPPONENT for each category

**THE STAT CREW SYSTEM**  
**Brigham Young University Game-by-Game Highs (as of Mar 15, 2010)**  
**All games**

<b>Opponent</b>	<b>Date</b>	<b>Score</b>	<b>Points</b>	<b>Rebounds</b>	<b>Assists</b>	<b>Steals</b>	<b>Blocked shots</b>
UT VALLEY WOLVERINES	11-13-09	73-51	14-BONHAM, Mindy MOEAKI, Keilani	8-WOOD, Coriann	8-HALL, Haley	3-BONHAM, Mindy	2-RILEY, Kristen
at Washington	11/18/09	66-67	14-HALL, Haley	5-WOOD, Coriann HALL, Haley	4-HALL, Haley	4-HALL, Haley	None
at Montana State	11/20/09	79-54	12-HALL, Haley KAUFUSI, Alexis RILEY, Kristen	9-PETERSON, Dani KAUFUSI, Alexis	3-FOREMAN, Jazmin	2-PARKER, Kim FOREMAN, Jazmin BONHAM, Mindy	2-RILEY, Kristen
at Southern Utah	11/24/09	72-39	12-WOOD, Coriann KAUFUSI, Alexis	11-KAUFUSI, Alexis	3-BONHAM, Mindy HALL, Haley	5-HALL, Haley	2-RILEY, Kristen
KANSAS STATE	11/27/09	62-65	13-BONHAM, Mindy	8-BONHAM, Mindy KAUFUSI, Alexis	4-HALL, Haley FOREMAN, Jazmin	2-HALL, Haley BONHAM, Mindy RILEY, Kristen	2-WOOD, Coriann
vs USF	12/04/09	72-60	15-RILEY, Kristen	7-KAUFUSI, Alexis	5-FOREMAN, Jazmin	3-BONHAM, Mindy KAUFUSI, Alexis HALL, Haley	1-WOOD, Coriann MOEAKI, Keilani
vs UH	12/5/09	81-44	21-FOREMAN, Jazmi	9-WOOD, Coriann	4-FOREMAN, Jazmin HALL, Haley JUDKINS, Jaime	5-FOREMAN, Jazmin	1-WOOD, Coriann LEACH, Megan
at Weber State	12-09-09	61-62	18-BONHAM, Mindy	11-WOOD, Coriann	7-HALL, Haley	6-FOREMAN, Jazmin	2-RILEY, Kristen
at Cal State Fullerton	12/12/09	75-72	24-BONHAM, Mindy	10-WOOD, Coriann	5-HALL, Haley	1-MOEAKI, Keilani BONHAM, Mindy HALL, Haley	2-BONHAM, Mindy
at Utah State	12/19/09	61-48	12-BONHAM, Mindy WOOD, Coriann	9-RILEY, Kristen	7-BONHAM, Mindy	4-HALL, Haley	1-PETERSON, Dani RILEY, Kristen
PORTLAND PILOTS	12-31-09	69-57	17-WOOD, Coriann	7-RILEY, Kristen	6-FOREMAN, Jazmin HALL, Haley	3-HALL, Haley	2-KAUFUSI, Alexis
NEVADA WOLFPACK	1-02-10	61-41	12-WOOD, Coriann	6-HALL, Haley	6-FOREMAN, Jazmin	4-HALL, Haley	2-BONHAM, Mindy WOOD, Coriann PETERSON, Dani
at UNLV	01/06/10	71-61	19-FOREMAN, Jazmin	10-WOOD, Coriann	9-BONHAM, Mindy	2-BONHAM, Mindy RILEY, Kristen HALL, Haley	None
AIR FORCE ACADEMY	01-13-10	77-46	19-FOREMAN, Jazmin	5-KAUFUSI, Alexis	9-BONHAM, Mindy	4-JUDKINS, Jaime FOREMAN, Jazmine	2-KAUFUSI, Alexis HALL, Haley
at Colorado State	01/16/10	67-58	21-WOOD, Coriann	9-RILEY, Kristen	6-FOREMAN, Jazmin	4-FOREMAN, Jazmin	1-PETERSON, Dani
at Wyoming Cowgirls	1/19/10	54-69	11-KAUFUSI, Alexis HALL, Haley	7-RILEY, Kristen	3-FOREMAN, Jazmin HALL, Haley	3-HALL, Haley	1-FOREMAN, Jazmin RILEY, Kristen
SAN DIEGO ST AZTECS	01/23/10	73-63	16-RILEY, Kristen	11-RILEY, Kristen	6-BONHAM, Mindy	3-BONHAM, Mindy FOREMAN, Jazmine RILEY, Kristen	1-KAUFUSI, Alexis RILEY, Kristen WOOD, Coriann
NEW MEXICO LOBOS	01/27/10	57-60	18-BONHAM, Mindy	11-KAUFUSI, Alexis	3-BONHAM, Mindy HALL, Haley FOREMAN, Jazmine	2-HALL, Haley	2-KAUFUSI, Alexis
at Utah	01/30/10	69-52	24-HALL, Haley	9-HALL, Haley	7-BONHAM, Mindy	3-HALL, Haley	2-LEACH, Megan
at TCU	02/03/10	40-64	9-MOEAKI, Keilani	5-PETERSON, Dani BONHAM, Mindy	5-FOREMAN, Jazmin	4-FOREMAN, Jazmin	2-WOOD, Coriann
UNLV REBELS	02/06/10	76-60	22-HALL, Haley	7-WOOD, Coriann	11-FOREMAN, Jazmin	2-HALL, Haley	1-PETERSON, Dani FOREMAN, Jazmine KAUFUSI, Alexis
at Air Force	02/13/10	78-53	17-FOREMAN, Jazmin	6-RILEY, Kristen	5-FOREMAN, Jazmin	5-FOREMAN, Jazmin	1-LEACH, Megan WOOD, Coriann MOEAKI, Keilani
COLORADO STATE	2/17/10	72-54	18-WOOD, Coriann	9-RILEY, Kristen	9-HALL, Haley	2-HALL, Haley	2-WOOD, Coriann

**THE STAT CREW SYSTEM**  
**Brigham Young University Game-by-Game Highs (as of Mar 15, 2010)**  
**All games**

<b>Opponent</b>	<b>Date</b>	<b>Score</b>	<b>Points</b>	<b>Rebounds</b>	<b>Assists</b>	<b>Steals</b>	<b>Blocked shots</b>
						BONHAM,Mindy FOREMAN,Jazmine	
WY	2/20/10	51-48	13-FOREMAN,Jazmin	8-RILEY,Kristen	3-MOEAKI,Keilani	5-HALL, Haley	3-MOEAKI,Keilani
at San Diego State	2-24-10	71-73	19-BONHAM,Mindy	9-RILEY,Kristen	5-BONHAM,Mindy	3-RILEY,Kristen	1-BONHAM,Mindy RILEY,Kristen WOOD,Coriann
at New Mexico	2/27/10	30-62	7-BONHAM,Mindy	5-PETERSON,Dani	2-HALL, Haley	1-HALL, Haley WOOD,Coriann RILEY,Kristen	2-WOOD,Coriann
UTAH UTES	3/3/2010	54-37	13-HALL, Haley	7-RILEY,Kristen	4-WOOD,Coriann	6-BONHAM,Mindy	1-RILEY,Kristen BONHAM,Mindy
TC HORNED FROGS	3/6/2010	70-65	17-HALL, Haley	10-RILEY,Kristen	9-BONHAM,Mindy	5-HALL, Haley	1-RILEY,Kristen
vs #3 San Diego State	03/12/10	47-77	11-WOOD,Coriann	6-FOREMAN,Jazmin	5-FOREMAN,Jazmin	3-BONHAM,Mindy	1-FOREMAN,Jazmin

**THE STAT CREW SYSTEM**  
**Brigham Young University Points-Rebounds-Assists (as of Mar 15, 2010)**  
**All games**

Opponent	Date	Score		01	03	4	10	13	21	22
				JACKSON,JE	FOREMAN,JA	PARKER,KIM	KAUFUSI,AL	JUDKINS,JA	BATES,STEP	BONHAM,MIN
UT VALLEY WOLVERINES	11-13-09	73-51	w	2-1-2	7-1-2	0-3-0	4-1-0	3-3-1	1-1-1	14-1-2
at Washington	11/18/09	66-67	L	3-0-0	1-2-1	5-1-0	5-3-1	DNP	DNP	10-4-3
at Montana State	11/20/09	79-54	w	1-1-0	4-4-3	3-4-1	12-9-2	6-1-0	0-2-0	11-5-2
at Southern Utah	11/24/09	72-39	w	0-1-1	7-3-2	5-1-1	12-11-0	5-0-0	3-0-0	9-4-3
KANSAS STATE	11/27/09	62-65	L	DNP	11-6-4	3-1-0	9-8-0	DNP	DNP	13-8-3
vs USF	12/04/09	72-60	w	0-1-0	7-4-5	3-2-1	12-7-1	0-1-1	DNP	14-4-3
vs UH	12/5/09	81-44	w	2-2-1	21-1-4	5-5-2	2-7-0	3-3-4	3-0-0	5-1-3
at Weber State	12-09-09	61-62	L	DNP	11-6-2	0-1-0	2-3-0	DNP	DNP	18-6-0
at Cal State Fullerton	12/12/09	75-72	w	DNP	8-1-2	DNP	12-6-0	0-1-0	0-0-0	24-6-4
at Utah State	12/19/09	61-48	w	DNP	9-4-6	DNP	2-4-0	0-2-1	0-1-0	12-4-7
PORTLAND PILOTS	12-31-09	69-57	w	DNP	9-3-6	DNP	6-6-0	0-0-2	0-0-0	13-4-3
NEVADA WOLFPACK	1-02-10	61-41	w	DNP	9-3-6	DNP	6-4-0	4-0-0	0-1-0	2-4-3
at UNLV	01/06/10	71-61	w	DNP	19-3-3	DNP	10-3-1	0-0-0	DNP	11-5-9
AIR FORCE ACADEMY	01-13-10	77-46	w	DNP	19-2-2	DNP	6-5-0	0-1-2	0-0-0	8-4-9
at Colorado State	01/16/10	67-58	w	DNP	12-3-6	DNP	8-7-0	0-0-0	DNP	11-3-3
at Wyoming Cowgirls	1/19/10	54-69	L	DNP	8-6-3	DNP	11-3-0	DNP	DNP	8-0-2
SAN DIEGO ST AZTECS	01/23/10	73-63	w	DNP	13-9-5	DNP	2-1-0	DNP	DNP	13-3-6
NEW MEXICO LOBOS	01/27/10	57-60	L	DNP	9-3-3	DNP	10-11-1	2-0-0	DNP	18-5-3
at Utah	01/30/10	69-52	w	DNP	8-0-2	DNP	8-2-0	0-0-0	0-0-0	4-8-7
at TCU	02/03/10	40-64	L	DNP	5-2-5	DNP	4-2-0	0-0-1	3-0-0	4-5-3
UNLV REBELS	02/06/10	76-60	w	DNP	11-4-11	DNP	11-2-0	0-0-1	0-1-0	13-5-8
at Air Force	02/13/10	78-53	w	DNP	17-3-5	DNP	7-4-0	0-2-0	0-0-1	13-1-3
COLORADO STATE	2/17/10	72-54	w	DNP	4-2-3	DNP	7-4-0	0-0-0	DNP	14-3-5
WY	2/20/10	51-48	w	DNP	13-1-1	DNP	0-3-0	DNP	DNP	8-7-1
at San Diego State	2-24-10	71-73	L	DNP	12-6-3	DNP	6-1-0	DNP	DNP	19-5-5
at New Mexico	2/27/10	30-62	L	DNP	3-4-1	DNP	5-4-1	0-0-0	0-2-0	7-4-1
UTAH UTES	3/3/2010	54-37	w	DNP	11-0-3	DNP	3-5-0	DNP	DNP	12-4-1
TC HORNE FROGS	3/6/2010	70-65	w	DNP	5-3-5	DNP	10-4-0	0-1-1	DNP	12-6-9
vs #3 San Diego State	03/12/10	47-77	L	DNP	6-6-5	DNP	6-4-1	0-2-1	0-0-0	8-0-1

Opponent	Date	Score		23	31	32	33	35	45	55
				WOOD,CORIA	BECK,MARIE	PETERSON,D	HALL,HALEY	RILEY,KRIS	MOEAKI,KEI	LEACH,MEGA
UT VALLEY WOLVERINES	11-13-09	73-51	w	10-8-1	0-1-0	10-3-0	0-1-8	8-6-2	14-4-2	0-3-0
at Washington	11/18/09	66-67	L	11-5-1	DNP	0-1-0	14-5-4	6-3-1	11-2-1	DNP
at Montana State	11/20/09	79-54	w	5-5-0	3-0-0	8-9-1	12-1-1	12-6-0	2-0-2	0-1-0
at Southern Utah	11/24/09	72-39	w	12-7-0	0-1-0	4-3-2	7-1-3	6-2-0	2-4-0	0-1-0
KANSAS STATE	11/27/09	62-65	L	3-4-0	DNP	2-0-0	10-4-4	9-1-1	2-2-1	DNP
vs USF	12/04/09	72-60	w	7-2-1	DNP	4-5-0	8-2-4	15-5-3	2-1-2	DNP
vs UH	12/5/09	81-44	w	11-9-0	0-1-0	8-3-0	9-1-4	5-3-3	5-1-2	2-2-0
at Weber State	12-09-09	61-62	L	4-11-0	DNP	2-3-0	3-2-7	10-5-2	11-7-0	DNP
at Cal State Fullerton	12/12/09	75-72	w	16-10-2	DNP	0-1-0	6-4-5	4-7-2	5-1-0	DNP
at Utah State	12/19/09	61-48	w	12-2-0	0-0-0	0-3-0	7-5-3	11-9-0	8-6-1	0-1-0
PORTLAND PILOTS	12-31-09	69-57	w	17-6-1	0-0-0	8-1-0	10-5-6	4-7-1	2-2-1	DNP
NEVADA WOLFPACK	1-02-10	61-41	w	12-3-0	0-1-0	1-2-0	11-6-4	10-5-2	6-4-1	DNP
at UNLV	01/06/10	71-61	w	17-10-0	DNP	0-0-0	8-5-6	6-5-1	0-1-0	DNP
AIR FORCE ACADEMY	01-13-10	77-46	w	6-2-3	2-0-1	7-2-0	8-2-7	17-2-2	4-2-2	0-1-1
at Colorado State	01/16/10	67-58	w	21-5-1	DNP	2-1-0	5-5-5	5-9-1	3-1-0	DNP
at Wyoming Cowgirls	1/19/10	54-69	L	2-5-2	DNP	0-0-0	11-3-3	8-7-1	6-3-1	DNP
SAN DIEGO ST AZTECS	01/23/10	73-63	w	10-6-1	DNP	6-1-0	11-4-4	16-11-1	2-0-1	DNP
NEW MEXICO LOBOS	01/27/10	57-60	L	4-2-1	DNP	3-2-1	0-4-3	8-7-1	3-1-0	DNP
at Utah	01/30/10	69-52	w	10-4-1	0-1-0	0-4-2	24-9-4	9-4-1	6-1-1	0-1-0
at TCU	02/03/10	40-64	L	8-2-0	0-0-0	0-5-1	0-4-0	7-3-0	9-1-1	0-0-0
UNLV REBELS	02/06/10	76-60	w	8-7-1	0-0-0	6-2-0	22-3-3	3-3-2	2-2-2	0-0-0
at Air Force	02/13/10	78-53	w	10-2-3	2-0-0	6-3-0	2-3-4	10-6-0	9-1-3	2-0-1
COLORADO STATE	2/17/10	72-54	w	18-8-1	DNP	2-3-1	9-8-9	11-9-2	7-1-0	DNP
WY	2/20/10	51-48	w	11-4-1	DNP	3-2-0	12-6-2	4-8-0	0-2-3	DNP
at San Diego State	2-24-10	71-73	L	18-6-0	DNP	DNP	5-2-4	11-9-4	0-2-0	DNP
at New Mexico	2/27/10	30-62	L	6-4-1	0-1-0	2-5-0	3-2-2	0-4-0	4-4-1	0-2-0
UTAH UTES	3/3/2010	54-37	w	8-5-4	0-0-0	0-0-0	13-6-3	7-7-3	0-3-0	DNP
TC HORNE FROGS	3/6/2010	70-65	w	8-5-1	DNP	DNP	17-3-6	12-10-1	6-1-0	DNP
vs #3 San Diego State	03/12/10	47-77	L	11-5-0	0-0-0	2-3-0	6-2-2	4-2-1	4-3-0	0-0-0

**THE STAT CREW SYSTEM**  
**Brigham Young University Category Leaders (as of Mar 15, 2010)**  
**All games**

<b>Points</b>	<b>G</b>	<b>Pts</b>	<b>Pts/G</b>
BONHAM, Mindy	29	328	11.3
WOOD, Coriann	29	296	10.2
FOREMAN, Jazmine	29	279	9.6
HALL, Haley	29	253	8.7
RILEY, Kristen	29	238	8.2
KAUFUSI, Alexis	29	198	6.8
MOEAKI, Keilani	29	135	4.7
PETERSON, Dani	27	86	3.2
PARKER, Kim	8	24	3.0
JUDKINS, Jaime	21	23	1.1
BATES, Stephanie	15	10	0.7
JACKSON, Jenteal	6	8	1.3

<b>Scoring Average</b>	<b>G</b>	<b>Pts</b>	<b>Avg/G</b>
BONHAM, Mindy	29	328	11.3
WOOD, Coriann	29	296	10.2
FOREMAN, Jazmine	29	279	9.6
HALL, Haley	29	253	8.7
RILEY, Kristen	29	238	8.2
KAUFUSI, Alexis	29	198	6.8
MOEAKI, Keilani	29	135	4.7
PETERSON, Dani	27	86	3.2
PARKER, Kim	8	24	3.0
JACKSON, Jenteal	6	8	1.3
JUDKINS, Jaime	21	23	1.1
BATES, Stephanie	15	10	0.7

<b>FG Percentage</b>	<b>FG</b>	<b>Att</b>	<b>Pct</b>
KAUFUSI, Alexis	80	168	.476
RILEY, Kristen	91	193	.472
BONHAM, Mindy	131	289	.453
MOEAKI, Keilani	53	121	.438
WOOD, Coriann	107	248	.431
FOREMAN, Jazmine	94	220	.427
PARKER, Kim	8	19	.421
JUDKINS, Jaime	8	19	.421
PETERSON, Dani	39	102	.382
BECK, Marie	3	8	.375
HALL, Haley	94	256	.367
BATES, Stephanie	3	15	.200
JACKSON, Jenteal	2	10	.200

<b>Field Goal Attempts</b>	<b>G</b>	<b>Att</b>	<b>Att/G</b>
BONHAM, Mindy	29	289	10.0
HALL, Haley	29	256	8.8
WOOD, Coriann	29	248	8.6
FOREMAN, Jazmine	29	220	7.6
RILEY, Kristen	29	193	6.7

<b>Field Goals Made</b>	<b>G</b>	<b>Made</b>	<b>Made/G</b>
BONHAM, Mindy	29	131	4.5
WOOD, Coriann	29	107	3.7
HALL, Haley	29	94	3.2
FOREMAN, Jazmine	29	94	3.2
RILEY, Kristen	29	91	3.1

<b>3-Point Percentage</b>	<b>3FG</b>	<b>Att</b>	<b>Pct</b>
KAUFUSI, Alexis	1	1	1.000
WOOD, Coriann	46	103	.447
MOEAKI, Keilani	7	17	.412
FOREMAN, Jazmine	42	108	.389
PARKER, Kim	4	11	.364
HALL, Haley	52	145	.359
BONHAM, Mindy	25	72	.347
RILEY, Kristen	13	47	.277
JUDKINS, Jaime	4	15	.267
BECK, Marie	1	4	.250
BATES, Stephanie	3	15	.200
JACKSON, Jenteal	1	5	.200

<b>3-Point FG Attempts</b>	<b>G</b>	<b>Att</b>	<b>Att/G</b>
HALL, Haley	29	145	5.0
FOREMAN, Jazmine	29	108	3.7
WOOD, Coriann	29	103	3.6
BONHAM, Mindy	29	72	2.5
RILEY, Kristen	29	47	1.6

<b>3-Point FG Made</b>	<b>G</b>	<b>Made</b>	<b>Made/G</b>
HALL, Haley	29	52	1.8
WOOD, Coriann	29	46	1.6
FOREMAN, Jazmine	29	42	1.4
BONHAM, Mindy	29	25	0.9
RILEY, Kristen	29	13	0.4

<b>Free Throw Percent</b>	<b>FG</b>	<b>Att</b>	<b>Pct</b>
BONHAM, Mindy	41	51	.804
LEACH, Megan	4	5	.800
FOREMAN, Jazmine	49	62	.790
WOOD, Coriann	36	49	.735
HALL, Haley	13	20	.650
MOEAKI, Keilani	22	36	.611
JUDKINS, Jaime	3	5	.600
KAUFUSI, Alexis	37	63	.587
PARKER, Kim	4	7	.571
RILEY, Kristen	43	76	.566
BATES, Stephanie	1	2	.500
PETERSON, Dani	7	16	.438

<b>Free Throw Attempts</b>	<b>G</b>	<b>Att</b>	<b>Att/G</b>
RILEY, Kristen	29	76	2.6
KAUFUSI, Alexis	29	63	2.2
FOREMAN, Jazmine	29	62	2.1
BONHAM, Mindy	29	51	1.8
WOOD, Coriann	29	49	1.7

<b>Free Throws Made</b>	<b>G</b>	<b>Made</b>	<b>Made/G</b>
FOREMAN, Jazmine	29	49	1.7
RILEY, Kristen	29	43	1.5
BONHAM, Mindy	29	41	1.4
KAUFUSI, Alexis	29	37	1.3
WOOD, Coriann	29	36	1.2

**THE STAT CREW SYSTEM**  
**Brigham Young University Category Leaders (as of Mar 15, 2010)**  
**All games**

<b>Rebounds</b>	<b>G</b>	<b>Reb</b>	<b>Reb/G</b>
RILEY, Kristen	29	165	5.7
WOOD, Coriann	29	154	5.3
KAUFUSI, Alexis	29	134	4.6
BONHAM, Mindy	29	119	4.1
HALL, Haley	29	108	3.7

<b>Assists</b>	<b>G</b>	<b>No.</b>	<b>Ast/G</b>
HALL, Haley	29	120	4.1
BONHAM, Mindy	29	112	3.9
FOREMAN, Jazmine	29	109	3.8
RILEY, Kristen	29	38	1.3
MOEAKI, Keilani	29	28	1.0

<b>Rebound Average</b>	<b>G</b>	<b>Reb</b>	<b>Avg/G</b>
RILEY, Kristen	29	165	5.7
WOOD, Coriann	29	154	5.3
KAUFUSI, Alexis	29	134	4.6
BONHAM, Mindy	29	119	4.1
HALL, Haley	29	108	3.7

<b>Steals</b>	<b>G</b>	<b>No.</b>	<b>Stl/G</b>
HALL, Haley	29	67	2.3
FOREMAN, Jazmine	29	56	1.9
BONHAM, Mindy	29	54	1.9
RILEY, Kristen	29	33	1.1
KAUFUSI, Alexis	29	12	0.4

<b>Offensive Rebounds</b>	<b>G</b>	<b>No.</b>	<b>Avg/G</b>
RILEY, Kristen	29	63	2.2
KAUFUSI, Alexis	29	47	1.6
WOOD, Coriann	29	47	1.6
BONHAM, Mindy	29	38	1.3
PETERSON, Dani	27	29	1.1
HALL, Haley	29	29	1.0

<b>Blocked Shots</b>	<b>G</b>	<b>No.</b>	<b>Blk/G</b>
WOOD, Coriann	29	23	0.8
RILEY, Kristen	29	18	0.6
KAUFUSI, Alexis	29	13	0.4
LEACH, Megan	12	9	0.8
PETERSON, Dani	27	9	0.3

<b>Defensive Rebounds</b>	<b>G</b>	<b>No.</b>	<b>Avg/G</b>
WOOD, Coriann	29	107	3.7
RILEY, Kristen	29	102	3.5
KAUFUSI, Alexis	29	87	3.0
BONHAM, Mindy	29	81	2.8
HALL, Haley	29	79	2.7

<b>Minutes</b>	<b>G</b>	<b>No.</b>	<b>Min/G</b>
BONHAM, Mindy	29	957	33.0
HALL, Haley	29	942	32.5
FOREMAN, Jazmine	29	905	31.2
WOOD, Coriann	29	671	23.1
RILEY, Kristen	29	629	21.7

<b>Fouls</b>	<b>G</b>	<b>No.</b>	<b>Per/G</b>
WOOD, Coriann	29	82	2.8
FOREMAN, Jazmine	29	76	2.6
RILEY, Kristen	29	73	2.5
HALL, Haley	29	68	2.3
BONHAM, Mindy	29	54	1.9

<b>Turnovers</b>	<b>G</b>	<b>No.</b>	<b>TO/G</b>
BONHAM, Mindy	29	89	3.1
FOREMAN, Jazmine	29	77	2.7
HALL, Haley	29	60	2.1
KAUFUSI, Alexis	29	58	2.0
RILEY, Kristen	29	55	1.9

<b>Foulsouts</b>	<b>G</b>	<b>No.</b>
WOOD, Coriann	29	3
HALL, Haley	29	2
RILEY, Kristen	29	2
FOREMAN, Jazmine	29	2
BONHAM, Mindy	29	1





**Championship**  
**Sat. April 3 time TBA**  
**CBS College Sports**

**2010**  
**Postseason WNIT**

**CHAMPIONS**

*All game times are according to  
 host school's time zone.*



# 2009-10 **BYU BASKETBALL** RADIO/TV ROSTER



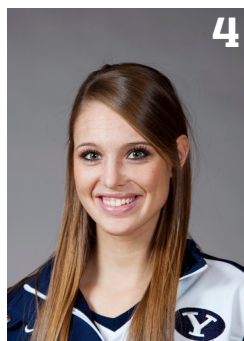
1

**Jenteal Jackson**  
G, 5-7, So.  
Salt Lake City, UT/Skyline HS



3

**Jazmine Foreman**  
G, 5-5, Jr.  
Vancouver, WA/Hudson's Bay HS



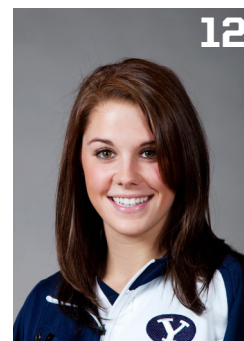
4

**Kim Parker**  
G, 5-11, Fr.  
Heber City, UT/Wasatch HS



10

**Alexis Kaufusi**  
F/C, 6-1, Fr./RS  
Provo, UT/Timpview HS



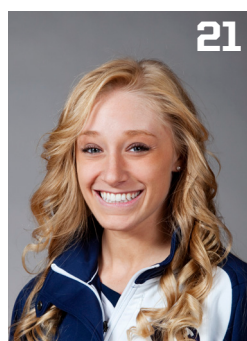
12

**Stephanie Vermunt**  
G/F, 6-0, Fr.  
Airdrie, Alberta, Canada/Bert Church HS



13

**Jaime Judkins**  
G, 5-6, Sr.  
Salt Lake City, UT/Skyline HS



21

**Stephanie Buhler Bates**  
G/F, 6-0, So.  
Oregon City, OR/Oregon City HS



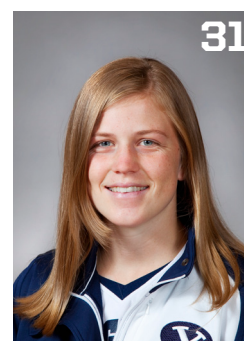
22

**Mindy Nielson**  
G, 5-10, Jr.  
Centennial, CO/Regis Jesuit HS



23

**Coriann Wood**  
F, 6-1, Jr.  
Basin City, WA/Connell HS



31

**Marie Beck**  
G, 5-8, Jr.  
Oxnard, CA/Channel Islands HS



32

**Dani Peterson**  
F, 6-1, So.  
Salt Lake City, UT/Skyline HS



33

**Haley Hall**  
G, 5-4, Jr.  
Syracuse, UT/Clearfield HS



35

**Kristen Riley**  
F, 6-3, So.  
San Clemente, CA/San Clemente HS



45

**Keilani Moeaki**  
F, 6-2, Jr.  
Warrenville, IL  
Wheaton Warrenville South HS



55

**Megan Marks Leach**  
F, 6-2, Jr.  
South Jordan, UT/Bingham HS



**Jeff Judkins**  
Head Coach



**Alli Bills**  
Assistant Coach



**Stacy Jensen**  
Assistant Coach



**Chris Boettcher**  
Assistant Coach



**Dan Doerflein**  
Director of Basketball Operations