



BYU Women's Basketball

Athletic Communications • 30 Smith Fieldhouse • Provo, Utah • 84602
801-422-8948 office • 801-422-0633 fax • website: www.byucougars.com

Women's Basketball Contact: Norma Collett • 801-422-4908 office • 801-372-0989 cell • email: norma_collett@byu.edu

BYU Women's Basketball Information (Mar. 9, 2010)

Notes- Game #29 - MWC Champ. Semifinal: BYU (20-8, 11-5) vs. winner of Wed.'s quarterfinal game

2009-10 SCHEDULE/Results

Date	Opponent	Time/Results
Nov. 6	Westminster, Exh.	W 85-58
Nov. 7	Chadron St., Exh.	W 107-55
Nov. 13	Utah Valley Univ.	W 73-51
Nov. 18	@ Washington	L 66-67
Nov. 20	@ Montana State	W 79-54
Nov. 24	@ SUU	W 72-39
Nov. 27	Kansas State	L 62-65
Dec. 4	vs. San Fran (@Hukilau Inv.)	W 72-60
Dec. 5	vs. Hawaii (@ Hukilau Inv.)	W 81-44
Dec. 9	@ Weber State	L 61-62 (2ot)
Dec. 12	@ CS Fullerton	W 75-72
Dec. 19	@ Utah State	W 61-48
Dec. 31	Portland	W 69-57
Jan. 2	Nevada	W 61-41
Jan. 6	@ UNLV*	W 71-61
Jan. 13	Air Force Academy* (BYU TV)	W 77-46
Jan. 16	@ CSU*	W 67-58
Jan. 19	@ Wyoming* (The Mtn.)	L 54-69
Jan. 23	SDSU*	W 73-63
Jan. 27	UNM* (BYU TV)	L 57-60
Jan. 30	@ Utah*	W 69-52
Feb. 3	@ TCU*	L 40-64
Feb. 6	UNLV* (BYU TV)	W 76-60
Feb. 13	@ Air Force Academy*	W 78-53
Feb. 17	CSU* (BYU TV)	W 72-54
Feb. 20	Wyoming* (BYU TV)	W 51-48
Feb. 24	@ SDSU*	L 71-73
Feb. 27	@ UNM*(CBS C)	L 30-62
Mar. 3	Utah* (BYU TV)	W 54-37
Mar. 6	TCU*	W 70-65
Mar. 10-13	@ MWC Tournament	TBA
Mar. 12	vs. (Winner of quarterfinal game)	2:30 p.m.
Mar. 20-23	@ NCAA 1st/2nd Round	TBA
Mar. 27-30	@ NCAA Regionals	TBA

Home Games played at Marriott Center
All Times Local to Site
*Indicates MWC Games

2009-10 BASKETBALL STAFF

Head Coach:	Jeff Judkins (Utah '78)
Office Phone:	801-422-8035
Best time to call:	9-10 a.m.daily
Assistant Coach:	Alli Bills (Utah, '98)
Office Phone:	801-422-1548
Assistant Coach:	Stacy Jensen (BYU '02)
Office Phone:	801-422-7682
Assistant Coach:	Chris Boettcher (BYU '94)
Office Phone:	801-422-8155

COUGARS ARE NO. 2 SEED, AWAIT OPPONENT

GM #29 INFORMATION - vs. (WY, or SDSU) 3/12/10

Tip Off:	2: 30 p.m. PT
Site:	Thomas & Mack Center
Live Internet Audio:	BYU Radio (Kristen Kozlowski)
Live Stats:	www.byucougars.com
Live Television: (The Mtn.)	Mike Evans, Andrea Lloyd, Anne Marie Anderson
The Series: (WY)	BYU leads 47-21
Last Meeting: (WY)	BYU won 51-48 in Provo, Utah (Feb. 20, 2010)
The Series: (SDSU)	BYU leads 26-13
Last Meeting: (SDSU)	SDSU won 73-71 in San Diego, Calif. (Feb. 24, 2010)

No. 2 SEED BYU AWAIT SEMIFINAL OPPONENT

With a (20-8, 11-5) record and a second place finish in the 2010 MWC regular season, BYU's women's basketball team prepares for the MWC Championships.

As the No. 2 seed, the Cougars get a bye into the semifinals of the MWC tournament and will play Fri. Mar. 12 at 2:30 p.m. PT. Their opponent could be Wyoming or San Diego State.

During the MWC campaign, BYU split the series with Wyoming and San Diego State.

BYU Probable Starters

No.	Name	Pos.	Ht.	Yr.	PPG	RPG
03	Jazmine Foreman	G	5-5	Jr	9.8	3.2
22	Mindy Bonham (Nielson)	G	5-10	Jr	11.4	4.3
33	Haley Hall	G	5-4	Jr	8.8	3.8
45	Keilani Moeaki	F	6-2	Jr	4.7	2.1
35	Kristen Riley	C	6-3	So	8.4	5.8

Off the Bench

No.	Name	Pos.	Ht.	Yr.	PPG	RPG
23	Coriann Wood	F	6-1	Jr	10.2	5.3
10	Alexis Kaufusi	F	6-1	Fr	6.9	4.6
32	Dani Peterson	F	6-1	So	3.2	2.5
13	Jaime Judkins	G	5-6	Sr	1.2	0.8
21	Stephanie Buhler-Bates	F	6-1	So	0.7	0.6
31	Marie Beck	G	5-8	Jr	0.5	0.5
55	Megan Leach	F	6-3	Jr	0.4	1.1



BYU 2009-10 Quick Facts

University Information

Location: Provo, Utah
 Founded: Oct. 15, 1875
 Elevation: 4,553 feet
 Enrollment: 33,278
 Nickname: Cougars
 Mascot Cosmo
 Colors Dark Blue and White

Team Information

2009-10 Record: 20-8, 11-5
 Coach Judkins Record: 177-97
 2008-09 Overall Record: 18-11
 2008-09 Conf. Record: 8-8/5th (t)
 Letterwinners R/L: 12/3
 Starters R/L: 3/2
 Newcomers: 3

Roster Breakdown

Letterwinners Returning: (12)

Jaime Judkins: 5-6 Sr. G (0.9 ppg; 0.3 rpg)
 Marie Beck: 5-8 Jr. G (Played in three games)
 Jazmine Foreman: 5-5 Jr. G (6.8 ppg; 4.0 rpg)
 Megan Marks: 6-2 Jr. F (1.4 ppg; 1.6 rpg)
 Keilani Moeaki: 6-2 Jr. F (5.3 ppg; 2.8 rpg)
 Mindy Nielson: 5-10 Jr. G (10.4 ppg; 3.9 rpg)
 Coriann Wood: 6-1 Jr. F (6.4 ppg; 4.8 rpg)
 Stephanie Buhler: 6-0, So F (2.4 ppg, 0.2 rpg)
 Jenteal Jackson: 5-7, So G (1.0 ppg, 0.7 rpg)
 Kristen Riley: 6-3, So. F (3.3 ppg, 3.6 rpg)
 Dani Peterson: 6-1, So. F (2.0 ppg, 1.5 rpg)
 Haley Hall: 5-4 Jr. G (played in 7 games in 2006-07)*

Letterwinners Lost: (3)

Sarah Hostetter: (2.6 ppg; 1.0 rpg)
 Cassie King: (7.9 ppg; 6.0 rpg)
 Shawnee Slade: (9.8 ppg; 4.0 rpg)

Starters Returning: (3)

Mindy Nielson: 5-10 Jr. G (10.4 ppg; 3.9 rpg)
 Jazmine Foreman: 5-5 Jr. G (6.8 ppg; 4.0 rpg)
 Keilani Moeaki: 6-2 Jr. F (5.3 ppg; 2.8 rpg)

Starters Lost: (2)

Cassie King: (7.9 ppg; 6.0 rpg)
 Shawnee Slade: (9.8 ppg; 4.0 rpg)

Newcomers: (3)

Alexis Kaufusi: 6-1 F (Provo, UT/Timpview HS)^
 Kim Parker: 5-11 G/F (Heber City, UT/Wasatch HS)
 Stephanie Vermunt: 6-0 F (Airdrie, Alb., Can/Bert Church HS)

* Played in six games in 2006-07 prior to torn ACL injury. Reinjured it in 2007-08. ACL injury 2008-09
 ^ 2008-09 Redshirt

2009-10 STATS SUMMARY

- ✓ Shooting from field: (.426, 693-1627)
- ✓ Shooting from three-point line: (.362, 199-550)
- ✓ Shooting from free-throw line: (.656, 257-392)
- ✓ Average points per game: 65.8
- ✓ Average rebounds per game: 38.0
- ✓ Average assists per game: 16.7
- ✓ Average steals per game: 9.4
- ✓ Average blocks per game: 3.5
- ✓ Average turnovers per game: 17.0

COUGARS IN THE NCAA STATS (AS OF MAR. 8, 2010)

TEAM

- Assists Per Game - 12th (16.8)
- Assist/Turnover Ratio - 22nd (0.99)
- Three-Point Field Goals Per Game - 27th (7.1)
- Three-Point Field Goal Percentage - 28th (36.2)
- Scoring Defense - 31st (56.6)

PLAYER

- Assist/Turnover Ratio - Haley Hall, 16th (2.15)

TEAM HAS STRONG SHOWING IN THE MWC 2009-10 RACE

With a 11-5 record in league play, the Cougar women had great success during the 2010 campaign clinching second place. BYU was picked to finish sixth in the conference.

2010 MWC POSTSEASON HONORS

Mindy Bonham - Second Team All-MWC
 Mindy Bonham - All-Defensive Team
 Jazmine Foreman - All-Defensive Team
 Jazmine Foreman - Honorable Mention All-MWC
 Coriann Wood - 6th Player of the Year
 Coriann Wood - Honorable Mention All-MWC
 Haley Hall - Honorable Mention All-MWC
 Kristen Riley - Honorable Mention All-MWC

PLAYER INJURY REPORT

Freshman guard Kim Parker suffered a season ending injury in the game at Weber State. She has torn ligaments in her left foot.

Sophomore guard Jenteal Jackson will apply for a medical redshirt for this year due to an on-going back problem.

FRESHMAN TO REDSHIRT

Stephanie Vermunt, a 6-0 freshman guard/forward from Airdrie, Alberta, Canada will redshirt the 2009-10 season.

TEAM CAPTAINS

Senior guard Jaime Judkins and junior point guard Haley Hall have been selected by their teammates as co-captains for the 2009-10 season.

USA Today ESPN Div. I Top 25 Coaches Poll -- (3/9/10) - Week 17

Rk.	School
1.	Connecticut (32-0)
2.	Stanford (28-1)
3.	Nebraska (29-0)
4.	Tennessee (30-2)
5.	Xavier (27-3)
6.	Duke (27-5)
7.	Notre Dame (27-5)
8.	West Virginia (28-4)
9.	Ohio State (30-4)
10.	Florida State (26-5)
11.	Texas A&M (22-7)
12.	Oklahoma (21-9)
13.	Georgetown (25-6)
14.	Iowa State (23-6)
15.	Gonzaga (27-4)
16.	Kentucky (25-7)
17.	St. John's (24-6)
18.	Baylor (22-8)
19.	Hartford (27-3)
20.	Texas (21-9)
21.	Oklahoma State (21-9)
22.	Virginia (21-9)
23.	UCLA (22-7)
24.	Michigan State (22-9)
25.	Middle Tennessee (24-5)

Receiving Votes. TCU*

2009-10 BYU's record when...

BYU leads at half	18-2
Opponent leads at half	2-6
Score is tied at the half	0-0
Game goes into overtime	0-1
BYU shoots 50 % or better	2-1
Opponent shoots 50 % or better	0-0
BYU makes five or more 3-pointers	20-4
Opponent makes 5 or more 3-pointers	8-6
BYU outrebounds opponent	12-4
Opponent outrebounds BYU	5-3
Rebounds are equal	1-0
BYU has 16 and under turnovers	9-4
Opponent has 16 and under	6-3
BYU has 17-20 turnovers	7-3
Opponent has 17-20 turnovers	7-2
BYU has more than 20 turnovers	4-2
Opponent has more than 20 turnovers	7-2
Cougars play at home	10-2
Cougars play on the road	8-6
Cougars play at neutral site	2-0

PREVIOUS GAME - vs. TCU (3/6/10)

Playing in front of a home crowd on Senior Day, the BYU women's basketball team proved its season is far from over, defeating Mountain West Conference Champion TCU, 70-65, on Saturday.

The win gives the Cougars (20-8, 11-5 MWC) a second place finish in the MWC, after being picked to finish sixth in the pre-season, and will be the No. 2 seed heading into next week's tournament.

"I'm real proud of these guys," said BYU head coach Jeff Judkins. "We figured out a way to win when TCU came back on us and stuck together as a team, which we've done all year. It was a great effort by so many people. We're getting better as a team, and I like a lot of things we're doing."

Junior Haley Hall led the way for BYU with 17 points, including three treys. With TCU threatening at the end of the game, Hall scored the Cougars' final nine points to secure the win. Other double-digit scorers for BYU included Kristen Riley and Mindy Bonham each with 12 points and Alexis Kaufusi with 10. Riley also posted a double-double on the afternoon with 10 rebounds while Bonham tied her career high with nine assists.

The Cougars struck first with a pair of free throws, but both teams struggled from the field early, going a combined 1-for-8 in the first three minutes. BYU's tenacious defense caused six early TCU turnovers and allowed the Cougars to open up a 17-7 lead at the 12:48 mark behind six points each from Riley and Bonham.

Missed TCU shots continued to turn into Cougar opportunities as BYU racked up rebounds on both ends of the floor and dictated the pace of the game. Two timely three-pointers kept the Horned Frogs close, but the Cougars continued to push the ball and crash the boards to maintain the advantage. Leading 25-19, BYU's Jazmine Foreman drained a trey from four feet behind the line to ignite the crowd and force a TCU timeout with 4:01 left in the half. Despite being held scoreless for the remainder of the opening period, BYU still took a 28-23 lead into the locker room.

BYU opened up the second half much as it did in the first, with a 9-3 run to post the team's largest lead of the game at 37-26. TCU found its offensive footing after calling a timeout with 18:15 left, but the Cougars continued to make shots and hold on to the lead. A spate of TCU free throws looked like the beginning of a comeback until Coriann Wood and Foreman put in back-to-back layups to push the advantage to 50-37 with just over 12 minutes left to play.

From there, the two teams traded buckets until a trey from Wood, who was playing with four fouls, gave BYU a 60-44 lead. However, foul trouble plagued the Cougars down the stretch as the advantage was quickly whittled down to eight points at the free-throw line with under four minutes left in the game. Finally, it was BYU's turn at the charity stripe as Hall sank two to push the lead back to double-digits at 63-53.

But moments later, a Horned Frog lay in, followed by a TCU trey, cut the advantage in half and had the Cougars on the ropes. TCU continued to score from the free-throw line as BYU struggled from the field until suddenly a game that was once in hand was down to 65-63 with 50 seconds to play. But Hall once again came up big, draining a huge three-pointer as the clock ticked down to 15 seconds. After an uncontested layup on the other end, Hall made two more free throws to put the game away.

2008-09 SEASON REVIEW

Highlights of the 2008-09 season included a 10-game win streak that spanned from the end of November to the middle of January marking another winning campaign for BYU's women's basketball program.

The team compiled an impressive 18-11 overall record and finished in fifth place in the Mountain West Conference with an 8-8 mark.

Along the way, the Cougars recorded impressive wins over two Pac-10 schools, USC and Oregon, as well as convincing victories over Wright State, Long Beach State, Arkansas State, Nevada and the University of Portland. They also captured wins against in-state foes Utah State, Southern Utah and Weber State.

Other highlights included tallying an 11-1 record when leading at the half, going 12-1 when outrebounding opponents and 13-7 when making at least five three pointers in a game. The team also grabbed a season-best 55 boards vs. Utah State in December, tying for second place in the program's history. They also had season bests in assists with 19 at Portland and in steals with 13 at San Diego State. In the win at Nevada, the team scored a season high 81 points. The team scored 60 points or more in 13 games winning all but one, and they had at least two players score in double figures in a total of 18 contests while capturing 12 wins. The deep bench on the BYU squad also played a vital role in the success of the season. There were a total of 17 games where the Cougar bench outscored the opponent bench, and of those the team won 11 of those contests.

As in years past, BYU achieved success during the 2009 MWC race sweeping the series against Colorado State, UNLV, and the Air Force Academy, splitting the series against Wyoming and TCU. The Cougars were the only team in league play to get a road win vs. the Horned Frogs.

With an 8-8 MWC record, the Cougars finished tied for fifth place with Wyoming, but went into the tournament as the sixth seed team because of tie breaking policies. In the league tournament played in Las Vegas at the Thomas & Mack Center, the Cougars faced UNLV and despite an strong come from behind effort, fell to the Rebels 58-66 in first round action. UNLV advanced to the semifinals before falling to San Diego State 63-71.

For the first time in the school's history, Cougar fans got a chance to see the nation's No. 1 ranked team play in the Marriott Center. Connecticut, who went on to win the 2009 NCAA Championships, played on the court on Nov. 25, 2008. On that night there were 3,109 fans in attendance making it the largest home crowd on the year, and the highest ranked basketball opponent men or women to ever play at the Marriott Center. When New Mexico played in Provo on Jan. 17, it was ranked 25th nationally, and was the second top-25 ranked team to make an appearance in Provo during the season.

The Cougar squad finished the year with an 8-6 record at home including a 67-45 victory over Oregon on Nov. 21 which improved coach Jeff Judkins' home opener record to 7-1 in his seven seasons.

BYU ended the year going 8-5 on the road and 2-0 when playing at neutral sites.

2009-10 BYU Numerical Roster

No.	Name	Pos.	Ht.	Cl.	Exp.	Hometown/Previous School
1	Jenteal Jackson	G	5-7	So	1V	Salt Lake City, UT/Skyline HS
3	Jazmine Foreman	G	5-5	Jr	2V	Vancouver, WA/Hudson's Bay HS
4	Kim Parker	G	5-11	Fr	HS	Heber City, UT/Wasatch HS
10	Alexis Kaufusi	F/C	6-1	Fr/RS	HS	Provo, UT/Timpview HS
12	Stephanie Vermunt	G/F	6-0	Fr	HS	Airdrie, Alberta, Canada/Bert Church HS
13	Jaime Judkins	G	5-6	Sr	3V	Salt Lake City, UT/Skyline HS
21	Stephanie Buhler Bates	F	6-0	So	1V	Oregon City, OR/Oregon City HS
22	Mindy Bonham (Nielson)	G	5-10	Jr	2V	Centennial, CO/Regis Jesuit HS
23	Coriann Wood	F	6-1	Jr	2V	Basin City, WA/Connell HS
31	Marie Beck	G	5-8	Jr	2V	Oxnard, CA/Channel Islands HS
32	Dani Peterson	F	6-1	So	1V	Salt Lake City, UT/Skyline HS
33	Haley Hall [^]	G	5-4	Jr	1V	Syracuse, UT/Clearfield HS
35	Kristen Riley	F	6-3	So	1V	San Clemente, CA/San Clemente HS
45	Keilani Moeaki	F	6-2	Jr	2V	Warrenville, IL/Wheaton Warrenville South HS
55	Megan Marks Leach	F	6-2	Jr	2V	South Jordan, UT/Bingham HS

[^] Did not compete in 2008-09 due to third ACL injury at the beginning of the year

Head Coach: Jeff Judkins

Assistant Coaches: Alli Bills, Stacy Jensen, Chris Boettcher

Director of Basketball Operations: Dan Doerflein

Athletic Trainer: Carolyn Billings

Team Manager: Erica Eyestone

TEAM HIGHLIGHTS (2009-10)

- ◆ Team's best field goal percentage, nonconference: (.500, 30-60) vs. Hawaii, 12/5/09
- ◆ Team's best field goal percentage, in league play: (.600, 33-55), vs. Air Force, 1/13/10
- ◆ Team's best 3-point field goal percentage, nonconference: (.571, 8-14) at Montana State, 11/20/09
- ◆ Team's best 3-point field goal percentage, in league play: (.500, 8-16), at Colorado State, 1/16/10
- ◆ Team's best free throw percentage, nonconference: (.800, 12-15), vs. Nevada, 1/2/10
- ◆ Team's best free throw percentage, in league play: (.900, 9-10), at Wyoming, 1/19/10
- ◆ Most three pointers made in nonconference play: 12 vs. Hawaii, 12/5/10 at Hukilau Inv. (BYU-H)
- ◆ Most three pointers made in league play: 11 vs. UNLV, 2/6/10
- ◆ Most assists in nonconference: 23 vs. Hawaii, 12/5/09
- ◆ Most assists in league play: 29 vs. Air Force, 1/13/10
- ◆ Most blocks in nonconference: 7 at SUU, 11/24/09
- ◆ Most blocks in league play: 8 vs. Air Force, 1/13/10
- ◆ Most steals in nonconference: 20 at SUU, 11/24/09
- ◆ Most steals in league play: 18 @ Air Force, 2/13/10 (once more)
- ◆ Least number of turnovers, nonconference: 6 vs. Portland, 12/31/09
- ◆ Least number of turnovers, in league play: 10 vs. UNLV on 2/6/10
- ◆ Most rebounds in league play: 45 vs. CSU, 2/17/10
- ◆ The 50 rebounds BYU had in the win at Montana State on 11/20/09 tie for 10th place in the team's all-time records for boards per game and as of 12/20/09 are the most to date
- ◆ The 37 point margin of victory in the win over Hawaii is the most this season and the 81 points scored are season highs. The last time the Cougars scored over 80 points was on Dec. 10, 2005 where they beat NAU 82-48 at home. In that same game BYU went into the locker room at halftime up 48-16, a 32-point advantage which is the biggest first half lead by the team so far this year.
- ◆ In the road win over the Utes on 1/30/10, BYU made 10 three pointers which tie for second best on the year and are the most in MWC action to date.
- ◆ The Cougar defense held Utah on 3/3/10 to just 14 first half points which are the lowest by a league opponent to date.
- ◆ For the second time in league play, all 12 players that are eligible to play got playing time in the road win over the Air Force Falcons on 2/13/10, the first was in the victory at Utah on 1/30/10.
- ◆ The 1,783 in attendance at the home game vs. Utah on 3/03/10 is a team-high in the Marriott Center for the Cougars this season and in league play. The total attendance marks the third 1,000-plus fans at a home game this year. In the home game vs. TCU on 3/6/10 there were 1,381 fans present.
- ◆ All 14 players on the Cougar roster played in the contest at SUU.
- ◆ In all games except two to date, at least two BYU players had scored in double-figures. Most recently, four players (Hall 17, Bonham 12, Riley 12, Kaufusi 10) had double digit performances in the home game vs. TCU on 3/6/10. The game marked the ninth time this year where four players had double digit scoring.
- ◆ In the home game vs. San Diego State on 1/23/10 five players scored in double figures, a first this year. Under coach Judkins there's been three other contest where five players have had double digit performances. They are:
 - Nov. 18, 2008: BYU at Nevada (Foreman, Nielson, Moeaki, King, Wood)
 - Dec. 6, 2004: BYU vs. George Washington (D. Cheesman, Sullivan, Gillespie, Anderson, Kozlowski)
 - Feb. 7, 2002: BYU at Wyoming (Leitner, D. Cheesman, Thorn, Pearson, Jensen)
- ◆ In the game vs. the University of San Francisco nine of the 11 players scored and all of them contributed in rebounds.
- ◆ In the home game vs. Portland, BYU picked up a 69-57 victory over Portland making it the second time this year that the team has put up less than 70 points and won.
- ◆ In the road game at Utah State, BYU won 61-48 marking the first time this season that the team has scored under 70 points and captured a win.
- ◆ Head Coach Jeff Judkins improved to 8-1 in home openers with the 73-51 victory over Utah Valley University on Nov. 13

TEAM HIGHLIGHTS - CONTINUED (2009-10)

•◆ The Cougars scored at least 70 points 13 times on the year compiling a 12-1 record, eight of those were in league play. Its most recent game was on Mar. 6, where they defeated regular season champion TCU 70-65. The 78 points scored at Air Force on Feb. 13 were the most in league play. The 25-point margin of victory over the Falcons is the second largest in league games. In the first meeting between the two schools, the Cougars won by 31 points.

PLAYER HIGHLIGHTS (2009-10) STARTERS/RESERVES

STARTERS

Jazmine Foreman:

- had 11 points in the home win over Utah on 3/3/10 marking her 12th season and 18th career double figure game
- picked up 12 points for her 11th season and 17th career double figure contest in the road game at SDSU on 2/24/10
- tallied a team high 13 points in the home victory over Wyoming on 2/20/10 for her 10th season and 16th career double digit scoring output
- led all scorers with 17 points in the road win at Air Force on 2/13/10 marking her ninth season and 15th career double figure game, the points were the third best scoring output in league play to date, the (.600, 6-10) field goal percentage is the best this year and in her career, also had five steals which are the most in league action to date
- recorded her first season and career double double with 11 points and 11 assists in the win vs. UNLV on 2/6/10, the 11 assists were team and game highs, the double digit scoring is her eighth season and 14th overall
- was one of five players scoring in double figures in the home victory over SDSU on 1/23/10 with 13 points for her seventh season and 13th overall, in the same game grabbed a season high nine boards which also tie for career highs
- picked up her sixth double digit contest of the year with 12 points in the road win at CSU on 1/16/10 which is also her 12th career double figure outing, in the same game dished out a team and game high six assists which also tie for season highs
- scored in double figures for the fifth time this season and 11th career with 19 points in the league win over the Air Force Academy on 1/13/10, 15 of them were from making five 3-pointers and the total points were team and game highs
- led all scorers with 19 points in the league win at UNLV on 1/6/10 recording her fourth double figure game of the season and her 10th in her career
- with the six assists in the win vs. Nevada on 1/2/10 she ties the number of assists (43) she had tallied her freshman season
- for the second straight game, dished out six assists, this time vs. Portland on 12/31/09 which tie for season highs
- dished out a total of six assists in the game at Utah State on 12/19/09 for new season highs
- had 11 points in the game at Weber State on 12/9/09 for her third double figure game of the year and ninth in her career and also tallied six steals for new season and career highs in that category
- scored a season and career high 21 points in the win over Hawaii on 12/5/09. The points were team and game highs and marked her eighth career double figure outing and her second this season
- of the 21 points scored vs. Hawaii, 12 were from three-point range while the four treys were also season and career highs in three-pointers made in a game
- In the game vs. Hawaii she led the team in steals with five for new season and career highs in that category. The five steals were also team and game highs
- dished out five assists in the win over San Francisco on 12/4/09 for season highs and were also team and game highs
- recorded 11 points in the home game vs. Kansas St., on 11/27/09 for her first double digit outing of the season and her seventh overall
- grabbed five boards in the home game vs. Kansas State on 11/27/09 for season highs

Haley Hall:

- had a team high 17 points in the home victory vs. TCU on 3/6/10 for her second straight, 12th season and 15th career double figure outing and also tied her season and career high in steals with five
- led the team in points with 13 in the home win over Utah on 3/3/10 recording her 11th season and 14th career double figure contest
- put up 12 points in the home win over Wyoming on 2/20/10 for her 10th season and 13th career double digit game, in that same contest had five steals which tie for season and career highs to date
- dished out nine assists for season and career highs in that category in the home win over CSU on 2/17/10
- had four steals in the road win at Air Force on 2/13/10

- led all scorers with 22 points in the home win over UNLV on 2/6/10 recording her ninth season and 12th double digit performance of the year
- picked up season and career highs in points and in rebounds with 24 and nine respectively in the road win at Utah on 1/30/10, the points were game and team highs and they marked her eighth season and 12th career double figure outing, in the same game she made 10 three pointers which were also season, career, team and game highs, she also shot (.693, 9-13) from the field and (.666, 6-9) from three point range both of which are season and career bests
- was one of five players to put up double figure points in the home victory over SDSU on 1/23/10 with 11 points recording her seventh season and 11th career double digit outing
- scored 11 points in the game at Wyoming on 1/19/10 for her sixth season and 10th career double figure game
- playing in her third MWC game of the 2010 campaign, picked up five points, five rebounds and five assists in the road win at CSU on 1/16/10
- scored 11 points in the home win vs. Nevada for her fifth double figure contest of the season and her ninth overall and in that same game grabbed new season and career highs in rebounds with six
- dished out a total of six assists and five rebounds in the home win over Portland on 12/31/09 tying season highs in both of those categories
- recorded her fourth double digit game of the year and seventh career with 10 points vs. Portland on 12/31/09
- tied her season and career highs in rebounds with five at Utah State on 12/19/09
- scored 10 points vs. Kansas State for her third time scoring in double-figures this season and her sixth time in her career
- in the road game at Southern Utah on 11/24/09, she tallied five steals for new season and career highs
- for the second straight time scored in double digits with 12 at Montana State on 11/20/09 for her fifth career outing
- led the team in points with 14 including four treys in the road game at Washington on 11/18/09, the points are just one shy of her career high 15 she scored in the road game at Stanford on 11/13/06
- in the first game of the year dished out a career high eight assists which also ended up being team and game highs

Keilani Moeki

- had three blocks in the home victory over Wyoming on 2/20/10 for season and career highs
- tied her season high in points with nine in league play in the road win at AF on 2/13/10, also dished out three assists and three steals which are season highs and tie for career highs
- led the team in points with nine in the road game at TCU on 2/3/10
- picked up 11 points at Weber State on 12/9/09 recording her third season and 11th career double figure outing, also had seven rebounds for new season highs
- with 11 points in the first road game of the season at Washington on 11/18/09, she has back-to-back games in which she's scored in double digits, marking her 10th career and second this year
- had her first double figure performances in the win over UVU with 14 points, marking her ninth career outing
- grabbed four offensive rebounds vs. UVU on 11/13/09

Mindy Bonham (Nielson):

- scored 12 points in the home victory over TCU on 3/6/10 for her second straight, 19th season and 38th overall double digit performance, also had nine assists which tie for season and career highs
- tallied 12 points in the home win over Utah on 3/3/10 marking her 18th season and 37th overall double figure contest, in the same game tied her season and career high in steals with six and they were also team and game highs
- led the team in points with 19 in the road game at SDSU on 2/24/10 for her 17th season and 36th double digit scoring performance, she also shot (.727, 8-11) from the field for season and career bests in that category
- had 14 points in the home win over CSU on 2/17/10 for her 16th season, 35th career and third straight double figure game
- scored 13 points in the road win at AF marking her 15th season and 34th career double-digit outing
- put up 13 points in the home victory over UNLV on 2/6/10 for her 14th season and 33rd career double digit outing
- grabbed eight boards in the road win at Utah on 1/30/10 which tie for season and career highs

-
- led all scorers with 18 points in the home game vs. New Mexico on 1/27/10 recording her 13th season, 32nd career and second straight double figure outing, the 18 also were the most in league play to date
 - was one of five players who tallied double digits in the home victory over SDSU on 1/23/10 with 13 points for her 12th season and 31st career outing
 - recorded her 11th season and 30th career double digit performance with 11 points in the road win at CSU on 1/16/10
 - dished out a team and game high nine assists for the second straight time in the home win against the Air Force on 1/13/09, the assists were also team and game highs
 - scored 11 points and dished out nine assists in the win over the Rebels on 1/6/10 for her 10th double digit performance of the year and her 29th overall, and the nine assists are new season highs and tie for career highs
 - tallied 13 points recording her fourth straight, ninth season and 28th overall double figure contest in the home win over Portland on 12/31/09
 - recorded her third straight game in which she has scored in double figures with 12 at Utah State on 12/19/09 marking her eighth double digit contest of the season and 27th overall, also dished out seven assist for season highs in that category
 - picked up a season high 24 points at CS Fullerton on 12/12/09 for her seventh double figure game of the season and her 26th overall, the 24 points were team highs and tied for game highs, also dished out four assists for season highs in that category
 - led all scorers with 18 points at Weber State on 12/9/09 for her sixth double digit game this year and 25th in her career
 - scored 14 points vs. San Francisco on 12/4/09 recording her fifth season and 24th overall double figure outing
 - tied her career-high with eight rebounds and led the team with 13 points vs Kansas State. It was her fourth time scoring in double-figures this season and 23rd time in her career
 - for a third straight time has scored in double figures with 11 points at Montana State on 11/20/09 making it her 22nd overall
 - had her second consecutive game where she's put up double digit numbers with 10 points at Washington on 11/18/09 for her 21st overall and second this season.
 - recorded her first double digit game of the year and 20th overall with 14 points in the season opener victory over UVU.
 - had a team and game high three steals in the win over UVU on 11/13/09

Kristen Riley:

- picked up her second season and career double double with 12 points and 10 rebounds in the home victory over TCU on 3/6/10, the 10 boards were team highs
- led the team in rebounds with nine in the road game at SDSU on 2/24/10 and also put up 11 points for her 10th season and career double digit game
- put up 11 points in the home win over CSU on 2/17/10 marking her ninth season and career double figure contest and her second straight, in the same game led team and game in rebounds grabbing nine
- scored 10 points in the win at AF on 2/13/10 for her eighth season and career double digit performance, and also tied her season and career highs in steals with three
- picked up her first season and career double double with team highs in points (16) and in rebounds with (11) in the home win over SDSU on 1/23/10, the boards were game highs and career highs while the points marked her seventh season and career double figure outing
- led the team in rebounds for the second straight time with seven in the road game at Wyoming on 1/19/10
- tied her season and career high in rebounds grabbing nine in the road win at CSU on 1/16/10 which were also team highs
- recorded her sixth season and career double figure contest with 17 points in the win vs. Air Force on 1/13/10, the points were also new season and career highs, and also tied her season high in steals with three
- picked up 10 points in the home win vs. Nevada for her fifth season and career double digit performance, and the points also increase her overall points on the year to 98 which surpasses the 97 point total in her freshman year
- led the team in rebounds with nine in the game at Utah State on 12/19/09 for new season and career highs and also tallied 11 points for her fourth season and career double figure outing

- scored 10 points at Weber State on 12/9/09 for her third season and career double digit contest
- picked up season and career highs in points with a team and game high 15 points vs. San Francisco on 12/4/09, marking her second double digit performance of the season and her career
- dished out three assists vs. Kansas State on 11/27/09 for season and career highs
- recorded three steals in the road win at SUU on 11/24/09 for season and career highs in that category
- had 12 points at Montana State on 11/20/09, also grabbed six rebounds and went (.750, 6-8) from the free throw line
- scored eight points in the home opener vs. UVU on 11/13/09 for her second best overall in her career
- grabbed six rebounds in the game vs. Utah Valley which tie for third place in her career in that category

RESERVES

Coriann Wood:

- dished out four assists in the home win over Utah on 3/3/10 tying her season and career highs in that category
- tied her season and career high in blocked shots with two in the road game at UNM on 2/27/10
- recorded her 16th double figure game of the season and her 25th in her career with 18 points in the road game at San Diego State on 2/24/10, and tied her season and career highs in three pointers made in a game with four
- scored 11 points in the home win over Wyoming on 2/20/10 for her 15th time scoring in double digits this year and the 24th in her career
- led all scorers with 18 points in the home win over CSU on 2/17/10 for her 14th season, 23rd overall and second straight double figure outing
- put up 10 points in the road victory at AF on 2/13/10 marking her 13th season and 22nd overall double figure game
- scored 10 points in the road win at Utah on 1/30/10 for her 12th season and 21st career double digit performance
- was one of five players to score in double figures in the home victory over SDSU on 1/23/10 with 10 points which mark her 11th season and 20th career double figure performances
- led all scorers and picked up new season and career highs in points with 21 in the road win at CSU on 1/16/10 for her ninth season and 18th career double digit outing
- recorded her second double double of the season and her career with 17 points and 10 rebounds, has now scored in double figures in a total of eight games this year, 17 overall and five straight, and the total boards were team and game highs
- had team and game highs in points with 12 vs. Nevada on 1/2/09 marking her seventh double figure game of the year and her 16th overall, and in the same game was perfect from the free throw line (2-2) and from behind the arc (2-2)
- picked up new season and career highs in points with 17 in the home win over Portland on 12/31/09 ... the double digit output is her sixth this year and 15th in her career, the points were team and game highs and she had tallied 15 of the 17 points in the first half of the game
- had her second consecutive game in which she has scored in double figures with 12 at Utah State on 12/19/09 while the points mark her fifth season and 14th career double digit performance ... in the same game was perfect from the free throw line (1.000, 6-6)
- recorded her first ever double double with a season and career high 16 points and 10 boards in the game at CS Fullerton on 12/12/09 ... the 10 rebounds were team and game highs ... the points mark her fourth double digit performance of the season and 13th overall and of the total points scored, nine were from three-point range which are season highs in that category
- in the road game at CS Fullerton dished out two assists for season highs
- led all players grabbing 11 boards in the game at Weber on 12/5/09 for season and career highs in the rebound category
- tied her career- and-season record with two blocks in the game vs. Kansas State and also had two steals for season and career highs
- tied in team and game highs in points with 12 at SUU on 11/24/09 marking her third double figure game of the season and 12th overall
- in the game at Washington on 11/18/09 tied for a team high five rebounds
- scored in double digits for the second straight time with 11 points in the game at Washington on 11/18/09 making it her 11th in her career

- picked up her first double figure game in the 2009-10 season in the game vs. UVU on 11/13/09 scoring 10 points off the bench, marking her 10th overall
- grabbed eight boards in the win vs. Utah Valley on 11/13/09 which were team and game highs in that category

Alexis Kaufusi

- tallied her ninth season and career double figure contest with 10 points in the home win over TCU on 3/6/10
- scored 11 points in the win over UNLV on 2/6/10 for her eighth season and career double digit outing of the year
- picked up her second double double of the season and career with 10 points and 11 rebounds in the home game vs. New Mexico on 1/27/10, the boards were team highs, tied for game highs, and were the most to date in league play, the 10 points mark her seventh double figure performance of the year
- recorded her sixth season and career double digit outing with 11 points in the road game at Wyoming on 1/19/10
- playing in her first ever MWC game at UNLV on 1/6/10 scored 10 points for her fifth double figure game of the season and career
- in the game at CS Fullerton scored 12 points for her fourth double digit outing of the season and her career
- had three steals in the game vs. San Francisco on 12/4/09 for new season and career highs
- picked up her third double figure scoring game of the season with 12 points vs. San Francisco on 12/4/09
- recorded her first double double of her career and of the season with 12 points and 11 rebounds at SUU on 11/24/09, the points tied for game and team highs as well
- scored 12 points and grabbed nine boards in the game at Montana State on 11/20/09 recording season and career highs in both categories
- came off the bench recording four points on 11/13/09 vs. UVU, in her first collegiate game of her career after red shirting last season

Dani Peterson:

- came off the bench in the win over AF on 2/13/10 recording six points and three rebounds in 13 minutes of action
- grabbed five boards in the road game at TCU on 2/3/10 which tied for team highs
- dished out two assists in the road win at Utah on 1/30/10 for new season and career highs in that category
- grabbed season and career highs in rebounds with nine at Montana State on 11/20/09 and also scored eight points after coming off the bench for 13 minutes of playing time
- in the first game of the 2009-10 campaign recorded career highs in points with 10 coming off the bench

Jaime Judkins:

- grabbed two rebounds in the road win at AF on 2/13/10 which are the most in league play to date
- had four steals for new season and career highs in that category in the win vs. Air Force on 1/13/10
- with the four points scored in the home win vs. Nevada on 1/2/10, has tallied a total of 21 points which are the most she has scored in her four year career
- dished out four assists in the win over Hawaii on 12/5/09 for season and career highs
- scored six points all from three-point range in the road game at Montana State on 11/20/09

Megan Leach:

- grabbed two rebounds for season highs in that category in the road game at UNM on 2/27/10
- was perfect at the line 2-2, had one assist and one block in the road win at AF on 2/13/10
- after playing in the road game at TCU on 2/3/10 has tallied the most blocks and steals in her career with eight and four respectively, and in the same game picked up season and career highs in steals with two
- picked up two blocks in the road win at Utah for new season and career highs in that category

Marie Beck:

- playing in her 12th game of the season and her fifth league contest scored two points in two minutes coming off the bench in the road win at AFA on 2/13/10

Stephanie Bates:

- in the road game at UNM on 2/27/10 grabbed two rebounds for season and career highs in that category

Kim Parker: (suffered foot injury in the game at Weber State on 12/09/09 and will redshirt rest of season)

- dished out two assists in the game vs. Hawaii on 12/5/09 for season and career highs
- scored five points in the win over Hawaii which tie for season and career highs and also grabbed five rebounds for season and career highs in that category
- tied her season and career high in points with five at SUU on 11/24/09
- scored three points in the road game at Montana State on 11/20/09 and also grabbed four rebounds for season and career highs in that category
- came off the bench to score five points and grabbed one offensive rebound in the road game at Washington on 11/18/09, marking her first points scored in her college career

Jenteal Jackson: (will apply for a medical redshirt year due to an ongoing back injury)

- had two steals at SUU on 11/24/09 which tie for career highs in that category, they are also season highs to date

2009-10 Game-by-Game Double Figure Scoring

Opponent	Date	How Many	Player (Points)
vs. Utah Valley	11/13/09	(4)	Nielson (14), Moeaki (14), Peterson (10), Wood (10)
@ Washington	11/18/09	(4)	Hall (14), Moeaki (11), Wood (11), Nielson (10)
@ Montana State	11/20/09	(4)	Hall (12), Riley (12), Kaufusi (12), Nielson (11)
@ Southern Utah	11/24/09	(2)	Wood (12), Kaufusi (12)
vs. Kansas State	11/27/09	(3)	Nielson (13), Foreman (11), Hall (10)
vs. San Francisco	12/4/09	(3)	Riley (15), Nielson (14), Kaufusi (12)
vs. Hawai'i	12/5/09	(2)	Foreman (21), Wood (11)
@ Weber State	12/9/09	(4)	Nielson (18), Moeaki (11), Foreman (11), Riley (10)
@ CS Fullerton	12/12/09	(3)	Nielson (24), Wood (16), Kaufusi (12)
@ Utah State	12/19/09	(3)	Nielson (12), Wood (12), Riley (11)
vs. Portland	12/31/09	(3)	Wood (17), Bonham (13), Hall (10)
vs. Nevada	01/02/10	(3)	Wood (12), Hall (11), Riley (10)
@ UNLV	01/06/10	(4)	Foreman (19), Wood (17), Bonham (11), Hall (10)
vs. Air Force Academy	01/13/10	(2)	Foreman (19), Riley (17)
@ Colorado State	01/16/10	(3)	Wood (21), Foreman (12), Bonham (11)
@ Wyoming	01/19/10	(2)	Hall (11), Kaufusi (11)
vs. San Diego State	01/23/10	(5)	Riley (16), Foreman (13), Bonham (13), Hall (11), Wood (10)
vs. New Mexico	01/27/10	(2)	Bonham (18), Kaufusi (10)
@ Utah	01/30/10	(2)	Hall (24), Wood (10)
vs. UNLV	02/06/10	(4)	Hall (22), Bonham (13), Foreman (11), Kaufusi (11)
@ Air Force Academy	02/13/10	(4)	Foreman (17), Bonham (13), Riley (10), Wood (10)
vs. CSU	02/17/10	(3)	Wood (18), Bonham (14), Riley (11)
vs. Wyoming	02/20/10	(3)	Foreman (13), Hall (12), Wood (11)
@ San Diego State	02/24/10	(4)	Bonham (19), Wood (18), Foreman (12), Riley (11)
vs. Utah	03/03/10	(3)	Hall (13), Bonham (12), Foreman (11)
vs. TCU	03/06/10	(4)	Hall (17), Bonham (12), Riley (12), Kaufusi (10)

Note: During the 2008-09 season

- in two games four players scored in double digits;
- in a total of four games three players tallied double digits;
- in 11 games two players had double figures;
- in just one game, five players scored in double figures

TRACKING BYU BENCH (AS OF 3/08/10)

📌 The Cougar bench continues to play a key role on the team this season. In points, the BYU bench has scored a total of 437 points to opponents 302. In the rebound category, the Cougar reserves have grabbed a total of 457 boards compared with 313 for the opponents.

📌 In the nonconference games, the most points scored by the BYU bench were 18 vs. SUU on 11/24/09. In that game the Thunderbirds bench scored seven points. In the steals category, the Cougar bench had seven while SUU had none.

📌 In nonconference contests, the Cougar bench grabbed 37 rebounds vs. Hawaii on 12/5/09. The Rainbow Wahine bench grabbed 17, and in that same game BYU had seven assists to Hawaii's five.

📌 At the conclusion of league games, the BYU reserves scored 321 points to 230 for conference foes. In the rebound category, the Cougars grabbed 181 to 132 boards.

BYU HISTORY IN MWC CHAMPIONSHIP

- The Cougar women have advanced to the championship game in six of the 10 years of the conference tournaments. BYU won the title in 2002 defeating UNLV 61-46 at the Thomas & Mack Center. That same year, the team went on to the Sweet Sixteen of the NCAA tournament.
- BYU has never entered the MWC Championships lower than the six seed.
- During last year's MWC tournament in Las Vegas, the Cougars entered the tournament as the No.6 seed after being tied with Wyoming for fifth place in the MWC regular season. But, because of tie-breaker procedures they were the No. 6 seed. The Cougars fell to UNLV 58-66 in the first round.

Overall MWC Tournament Record: 14-9 (.643)

Championships won: One (2002)

Head Coach Jeff Judkins record in MWC Championships: 10-7 in eight appearances

BYU In MWC CHAMPIONSHIP - Year-by-Year

Year	Seed	Finish	Result	Of Note
1999-00	2	2-1	Runner-up	Lost to Utah (61-47)
2000-01	4	2-1	Runner-up	Lost to CSU (59-56)
2001-02	3	3-0	Champion	Beat UNLV (61-46)
2002-03	5	2-1	Runner-up	Lost to UNM (52-46)
2003-04	6	0-1	Quarfinals	Lost to UNLV (60-57)
2004-05	1	1-1	Semifinals	Lost to Utah (64-48)
2005-06	1	2-1	Runner-up	Lost to Utah (84-60)
2006-07	1	2-1	Runner-up	Lost to UNM (63-49)
2007-08	5	0-1	1st Round	Lost to UNM (59-41)
2008-09	6	0-1	1st Round	Lost to UNLV (66-58)
Totals		14-9		

Record vs. MWC Foes in conference tournament (entering 2010 Championship)

Team	Record
Air Force Academy:	1-0
Colorado State:	3-1
New Mexico:	1-3
San Diego State:	1-0
TCU:	1-0
UNLV:	3-2
Utah:	3-3
Wyoming:	1-0

2009-10 Mountain West Conference

2009-10 Preseason Poll

BYU's women's basketball team was picked to finish sixth in the league race by the MWC Preseason Coaches and Media Poll.

2009-10 Mountain West Conference Preseason Poll

Rk.	Team (1st Place votes)	Points
1	San Diego State (25)	240
2.	TCU (3)	216
3.	Utah	185
4.	New Mexico	168
5.	Wyoming	121
6.	BYU	109
7.	UNLV	97
8.	Colorado State	57
9.	Air Force	31

2009-10 MWC Women's Basketball Champs. Schedule

Mar. 9 (Tuesday)	Time (TV)
Gm #1 - Utah vs. AFA	2 p.m.
Gm #2 - UNM vs. CSU	4:30 p.m.
Gm #3 -WY vs. UNLV	7 p.m.
Mar. 10 (Wednesday)	Time (TV)
Gm # 4 - Gm #1 winner vs. Gm #2 winner	4:30 p.m. (The Mtn.)
Gm #5 - No.3 seed SDSU vs. Gm #3 winner	7 p.m. (The Mtn.)
Mar. 12 (Friday)	Time (TV)
Gm #6 - No. 1 seed TCU vs. Gm #4 winner	12 p.m.(The Mtn.)
Gm #7 - No. 2 seed BYU vs. Gm #5 winner	2:30 p.m.(The Mtn.)
Mar. 13 (Saturday)	Time (TV)
Gm #8 - Championship Game	1 p.m. (Versus)

2009-10 MWC Women's Basketball Final Standings (03/08/10)

Team (Rank)	Conf. Games	All Games
TCU	12-4	22-7
BYU	11-5	20-8
Utah	10-6	19-10
SDSU	10-6	18-10
Wyoming	9-7	18-10
New Mexico	9-7	17-11
UNLV	6-11	13-17
CSU	5-10	13-16
Air Force	0-16	3-26

2009-10 MWC Statistics - BYU in the league - 03/09/10

Team Stats	All Gms	MWC Gms
Scoring Offense.....	3rd.....	4th
Scoring Defense.....	2nd.....	4th
Scoring Margin.....	3rd.....	4th
Free Throw %.....	9th.....	5th
Field Goal %.....	2nd.....	3rd
Field Goal % Defense.....	4th.....	5th
3-PT Field Goal %.....	2nd.....	2nd
3-PT Field Goal % Defense.....	4th.....	5th
Rebounding Offense.....	6th.....	8th
Rebounding Defense.....	3rd.....	4th
Rebounding Margin.....	2nd.....	6th
Blocked Shots.....	6th.....	6th
Assists.....	1st.....	1st
Steals.....	3rd.....	5th
Turnover Margin.....	3rd.....	3rd
Assist/Turnover Ratio.....	3rd.....	2nd
Offensive Rebounds.....	4th.....	9th
Defensive Rebounds.....	5th.....	4th(t)
Offensive Rebound %.....	2nd.....	9th
Defensive Rebound %.....	3rd.....	3rd
3-PT Field Goals Made.....	2nd.....	2nd

Individual Stats	All Gms	MWC Gms
Scoring.....	17th Bonham (11.4).....	16th (10.9)
.....	19th Wood (10.2).....	19th (10.3)
.....	n/a.....	17th Foreman, (10.6)
Rebounding.....	15th Riley (5.9).....	9th (6.5)
.....	19th Wood (5.4).....	n/a
Field Goal %.....	6th Riley (.476, 88-185).....	4th (.481, 51-106)
.....	7th Kaufusi (.469, 76-162).....	7th (.462, 43-93)
.....	8th Bonham (.464, 128-276).....	10th (.443, 70-158)
.....	14th Wood (.432, 102-236).....	12th (.429, 60-140)
Assists.....	4th Hall (4.2).....	5th (4.1)
.....	6th Bonhan (3.9).....	4th (4.7)
.....	8th Foreman (3.7).....	7th (3.8)
Steals.....	2nd Hall (2.4).....	3rd (2.2)
.....	7th Foreman (2.0).....	6th(t) (1.9)
.....	8th Bonham (1.8).....	12th(t) (1.7)
3-PT Field Goal %.....	1st Wood (.459, 45-98).....	2nd(.453, 29-64)
.....	4th Foreman (.396, 42-106).....	8th (.355, 27-76)
.....	8th Hall (.369, 52-141).....	6th (.358 29-81)
3-PT Field Goal Made.....	6th Hall (1.9).....	5th(t) (1.8)
.....	13th(t) Wood (1.6).....	5th(t) (1.8)
.....	15th Foreman (1.5).....	9th(t) (1.7)
Blocked Shots.....	9th Wood (0.8).....	11th (0.8)
Assist/Turnover Ratio.....	3rd Hall (2.1).....	3rd (1.9)
.....	7th Foreman (1.4).....	6th (1.5)
.....	9th Bonham (1.3).....	7th (1.5)
Offensive Rebounds.....	11th Riley (2.3).....	7th (2.7)
Defensive Rebounds.....	n/a.....	14th Riley, (3.8)



Head Coach - Jeff Judkins

Overall Record: 177-97

2009-10: 20-8, 11-5

Jeff Judkins begins his ninth year as head coach of the women's basketball program, after garnering back-to-back MWC Coach of the Year honors in 2006 and 2007. Prior

to heading up the women's program, he served one year (1999-2000) as Director of Basketball Operations for the BYU men's team. In (2000-2001) he was an assistant coach on the women's team.

In five of the last eight seasons, the Cougar team has participated in postseason tournaments including back-to-back NCAA tournament appearances in 2006 and 2007. This past season BYU compiled a 18-11, 8-8 (t-fifth) record on the year with junior Mindy Nielson garnering two MWC honors on the All-Conference Third Team and on the All-Defensive Team. Graduating seniors and co-captains Shawnee Slade and Cassie King were named Honorable Mention All-MWC. King was also named to the CoSIDA ESPN The Magazine Academic District 8 University Second Team.

The Cougar team recorded back-to-back MWC Regular Season Titles in 2006 and 2007 with players Ambrosia Anderson and Dani Wright being named MWC Co-Players of the Year those same seasons.

During Judkins' fifth season, the 2005-06 campaign, the Cougar squad compiled its best finish in school history with a 26-6 record, clinched its first MWC regular season title since 1992 and received a no. 7 seed in the NCAA tournament, the highest seed for any BYU program.

For the first time since the 2002-03 season, the 2005-06 squad and its 13-1 record to start the year, broke into the women's basketball collegiate polls, ranked no. 23 by the AP Poll and the USA Today/ESPN/WBCA Coaches Poll. They would move up the poll to as high as 18 and 16 in the two respective polls, finishing the year at no. 20. In that same season Judkins picked up his 100th win, a 69-67 victory over CSU on Mar. 2, the same time the team clinched the league's regular season title.

Under Judkins tutelage the women's basketball program has had consistent success with four postseason appearances including three NCAA Championships, guiding the team to its first ever Sweet Sixteen finish in 2002. In 2005, the 19-11 team played in the first round of the WNIT. Judkins has also coached two All-Americans in Erin Thorn and Ambrosia Anderson. Both have gone on to play in the WNBA. Thorn has been with the New York Liberty team for five years while Anderson completed one season with the Liberty team.

The longtime University of Utah coach and player came to Provo with a proven record of success dating back to his high school days at Highland High School in Salt Lake City.

An all-state selection in basketball, football and baseball, Judkins went on to play for the University of Utah from 1974-78.

While playing at Utah, Judkins helped lead the Utes to one conference championship and two berths in the NCAA tournament. He was a second-team academic All-American and three-time District VII academic selection. He also earned three First Team All-WAC honors and was a member of the 1977 United States World Games team that captured the gold medal.

Judkins also played five years in the National Basketball Association for the Boston Celtics, Portland Trailblazers, Detroit Pistons and Utah Jazz. He was a second-round pick of the Celtics in 1978, the same year the Celtics selected Larry Bird with the sixth pick overall.

After his NBA career, he returned to Utah in 1989 and was an instrumental part of the program's success during his 10 years with the program, recruiting such players as Keith Van Horn, Andre Miller, Mike Doleac, Hanno Mottola, Alex Jensen, Trent Whiting, Garner Meads, Jeff Johnsen and Britton Johnsen.

Judkins, graduated from the University of Utah in 1978 with a degree in health and physical education.

He and his wife Mary Kaye are the parents of five children: Jessica (29), {married to Paul}, Jordan (27), Jenna (25), {married to Whitney Neves who was a pole vaulter on the BYU men's track & field team} Jaime (22), and Jaxson (19). Jenna played four years on the volleyball team at BYU.

Hobbies: waterskiing, horseback riding, hunting, golf, softball, listening to music, and watching ESPN.

Judkins Coaching Record			
School	Yrs.	Rec.	Postseason
BYU	2001-02	24-9	NCAA Sweet 16
BYU	2002-03	19-12	NCAA 1st Round
BYU	2003-04	15-14	DNC
BYU	2004-05	19-11	WNIT 1st Round
BYU	2005-06	26-6	NCAA 2nd Round
BYU	2006-07	23-10	NCAA 1st Round
BYU	2007-08	13-16	DNC
BYU	2008-09	18-11	DNC
BYU	2009-10	20-8	

POSSIBLE MWC OPPONENT AT MWC CHAMPIONSHIPS

BYU AND WYOMING IN MWC TOURNAMENT HISTORY

The Cougars and Cowgirls have only met once in the league tournament. The first round matchup was on Mar. 6, 2002 with BYU getting the 82-69 win at the Thomas & Mack Center.

WYOMING - The team finished the 2010 MWC season tied with New Mexico for fifth place with a 9-7 league record. Three Cowgirls are scoring in double digits led by junior forward Hillary Carlson who scores 15.1 points a game and grabs 6.4 boards. She's followed by Aubrey Vandiver who contributes 14.1 points and grabs a team high 9.9 boards per contest. Rounding out the double figure scoring is sophomore forward Emma Langford's 11.9 points and 4.1 rebounds a game. She also has the most assists on the team with a total of 90 while Vandiver tops the list in the steals category with a total of 46 to date. Head coach Joe Legerski is in his seventh year with the Wyoming program.

Wyoming Probable Starters

No.	Name	Pos.	Ht.	Yr.	PPG	RPG
14	Jade Kennedy	F	6-1	Jr	7.3	5.0
21	Emma Langford	F	6-2	So	11.9	4.1
41	Hillary Carlson	F	6-3	Jr	15.1	6.4
03	Randi Richardson	G	5-7	Jr	4.4	2.3
20	Aubrey Vandiver	G	5-11	Jr	14.1	9.9

Stat Comparison

Category	BYU	WY
FG:	.426	.422
3FG:	.362	.393
FT:	.656	.704
Points:	6.8	67.9
Reb:	38.0	38.6

Series Information

Overall Series Record: BYU leads 47-21

BYU Record in Provo: 18-8

BYU Record in Laramie: 19-13

BYU Record in Neutral Sites: 3-0

BYU Record under Jeff Judkins: 11-8

BYU Record in Overtime Games: 1-2

Longest BYU Win Streak: 17 (1978-1987)

Longest Wyoming Win Streak: 3 (1989-1990)

Largest BYU Margin of Victory: 39, 99-60 in '84

Largest Wyoming Margin of Victory: 19, 75-56 in '05

How They Fared in 2010 MWC Campaign

BYU and Wyoming split the series this season with each team winning on its home court.

First meeting in 2010 — Laramie, WY on 01/19/10 Score: 54-69 for the Cowgirls

The BYU Cougars shot an amazing 90 percent from the charity stripe but couldn't quite keep the lead in its first loss in conference play against the Wyoming Cowgirls with a 54-69 ending score. Tough three-point shooting plagued the Cougars as they went 1-12 from the line compared to the Cowgirls' 12-27. BYU found themselves up by three at the half but were unable to convert second half opportunities at the basket. They took their last shot of the game with still one minute left to play.

Key Stats in 1st game

	BYU	Wyoming
Field Goal Percentage	22-58 (37.9%)	21-52 (40.4%)
Three-point Percentage	1-12 (8.3%)	12-27 (44.4%)
Free-Throw Percentage	9-10 (90%)	15-23 (65.2%)
Rebounds	32	42

Second meeting in 2010 – Provo, UT (Feb. 20, 2010) Score: 51-48 for the Cougars

BYU's win over the Cowgirls, splitting the season series, improved their overall record to 18-6 and tying them in first place with No. 23 TCU at that time, with identical 9-3 records. The Cougars took a 25-22 lead at the half with their largest lead coming in the second half by eight points. Three Cougars scored in double digits, including junior Jazmine Foreman with 13, junior Haley Hall with 12, and junior Coriann Wood with 11. Hall also contributed defensively with five of the teams' eight steals and played all 40 minutes.

Key Stats	BYU	Wyoming
Total FGs	19-53 (35.8%)	12-43 (27.9%)
Total 3-pt. FG	6-15 (40%)	7-20 (35%)
Total FT	7-14 (50%)	17-28 (60.7%)
Rebounds	37	37

BYU AND SDSU IN MWC TOURNAMENT HISTORY

The Cougars and Aztecs have compiled a 1-0 record in the conference tournament. The two schools only meeting in the league championships was during the 2000 campaign. On Mar. 8, BYU picked up the 78-37 win in first round action from the Thomas & Mack Center.

SAN DIEGO STATE -

The team finished the 2010 MWC race tied with Utah for third place with a 10-6 record. Currently, three players are scoring in double digits for SDSU led by seniors Jene Morris and Quenese Davis. Morris tops the list with 16.3 points and 2.7 rebounds per game while Davis contributes 12.4 points, 5.5 rebounds and a team high 5.3 assists per contest. Junior center Paris Johnson rounds out the double figure scoring with 11.5 points and 6.4 boards. Jessika Bradley leads the way in rebounds grabbing 6.5 boards per game with Morris having the most steals on the team with 82. Head coach Beth Burns is in her 13th season with the Aztecs women's basketball program.

San Diego State Probable Starters

No.	Name	Pos.	Ht.	Yr.	PPG	RPG
01	Jessika Bradley	F	6-3	Jr	7.3	6.5
32	Paris Johnson	C	6-4	Jr	11.5	6.4
02	Coco Davis	G	5-9	Jr	5.4	4.2
03	Quenese Davis	G	5-10	Sr	12.4	5.5
05	Jene Morris	G	5-9	Sr	16.3	2.7

Stat Comparison

Category	BYU	SDSU
FG:	.426	.443
3FG:	.362	.337
FT:	.656	.692
Points:	65.8	65.0
Reb:	38.0	36.6

Series Information

Overall Series Record: BYU leads 26-13
BYU Record in Provo: 15-3
BYU Record in San Diego: 10-10
BYU Record in Neutral Sites: 1-0
BYU Record under Jeff Judkins: 14-4
BYU Record in Overtime Games: N/A

Longest BYU Win Streak: 13 (2001-2007)
Longest SDSU Win Streak: 3 (twice, '95-'96; '81-'91)
Largest BYU Margin of Victory: 32, 82-50 in 2004
Largest SDSU Margin of Victory: 26, 85-59 in 1996

How They Fared in 2010 MWC Campaign

BYU and San Diego State split the series this season with each team winning on its home court.

First meeting in 2010 — Provo, UT on Jan. 23, 2010 Score: 73-63 for the Cougars

In a battle between two of the MWC's best women's basketball teams, BYU upset league-leading San Diego State with a 73-63 final score. BYU took the first lead of the game 30 seconds after tip off on a three-pointer from Kristen Riley and never looked back. The first half remained close with BYU only leading by two heading into the locker room, but the second half featured an explosive Cougar offense that outscored the Aztecs by eight in the second half. For the first time in the 2009-10 season, five players contributed double-figures to the winning effort. Riley, Foreman, Bonham, Hall and Wood each put up 16, 13, 13, 11 and 10 points, respectively.

Key Stats in 1st game

	BYU	SDSU
Field Goal Percentage	24-55 (43.6%)	26-57 (45.6%)
Three-point Percentage	5-15 (33.3%)	2-12 (16.7%)
Free-Throw Percentage	20-23 (87%)	9-15 (60%)
Rebounds	39	27

Second meeting in 2010 — San Diego, CA (Feb. 24, 2010) Score: 73-71 for the Aztecs

Junior Mindy Bonham led BYU with 19 points, a season-high in conference play, through a tough back-and-forth battle with 16 lead changes and 14 tied scores, but the Cougars couldn't quite get off the last shot as they fell a tough 71-73 in San Diego. Bonham recorded eight of BYU's first 10 points, finishing the first half with 11 points to be one of BYU's two players in double figures at the half. Wood also had 11 points as the team headed into the locker room. A 3-pointer from Haley Hall gave the Cougars the lead as they entered the halftime break. The second half saw more lead changes and more tied scores. With 59 seconds to play, Wood tied the game with a 3-pointer. An outside jumper from Paris Johnson with just 30 seconds on the clock would finish off the game, giving the Aztecs the win. Four players for BYU ended the game with double digits, the eighth time to do so this season. Bonham (19), Wood (18), Foreman (12), and Riley (11).

Key Stats in 2nd game

	BYU	San Diego State
Total FGs	19-53 (35.8%)	12-43 (27.9%)
Total 3-pt. FG	6-15 (40%)	7-20 (35%)
Total FT	7-14 (50%)	17-28 (60.7%)
Rebounds	33	31

TEAM TRAVEL

Team Flight: (Thurs. Mar. 11) Southwest Airlines Flight# 154 departs Salt Lake City at 10:50 a.m., arriving in Las Vegas at 11:15 a.m.
Team Flight: (Sun. Mar. 14) Southwest Airlines Flight # 770 departs Las Vegas at 10:30 a.m., arriving in Salt Lake City at 12:50 p.m.
Team Hotel: Green Valley Ranch - 2300 Paseo Valley Parkway, 702-617-7777, 702-617-7738, fax.

TEAM PRACTICES IN LAS VEGAS

Thurs. Mar. 11 - Team will practice from 3 p.m. to 4:25 p.m., at Cox Pavilion
Fri. Mar. 12 - Team shootaround from 9 a.m. to 9:55 a.m., Thomas & Mack Center
Sat. Mar. 13 - Team shootaround from 9 am. to 9:55 a.m., Thomas & Mack Center

2009-10 RETURNING PLAYERS

Jaime Judkins

Guard

5-6, Senior

Salt Lake City, UT - Skyline HS

#13



At BYU

SENIOR - (2009-2010): grabbed two rebounds in the road win at AF on 2/13/10 which are the most in league play to date ... had four steals for new season and career highs in that category in the win vs. Air Force on 1/13/10 ... with the four points scored in the home win vs. Nevada on 01/2/10 has tallied a total of 21 points which are the most she has scored in in her four year career ... dished out four assists in the win over Hawaii on 12/5/09 for new season and career highs ... in the second road contest of the season at Montana State on 11/20/09, scored six points all from three-point range ... scored three points and grabbed three rebounds in the first game of the season.

JUNIOR - (2008-2009): Final player notes: played in a total of 19 games ... was perfect from the line 2-2 for her two points vs. CSU on 1/10/09 which mark the third time on the season where she was perfect from free throw range, the other two games were vs. Oregon on 11/21/08 and at Portland on 1/3/09 ... picked up new season and career highs in points with seven in the game at Portland on 01/03/09 ... finished the year averaging 5.1 minutes of playing time with the most minutes 12 coming vs. the Air Force Academy ... played in 10 regular season contests and in nine league games ... had a total of 17 points, six rebounds and seven assists on the season ... named MWC Academic All-Conference.

SOPHOMORE - (2007-2008): Final player notes: played in 26 of the 29 games to date, starting in the game at Sacred Heart on 12/01/07 ... averaged 0.7 points and 0.5 rebounds per game ... picked up season and career highs in points and in rebounds in the game at UCSB on 11/9/07 with five points and three boards ... dished out season highs in assists with three in the contest at Weber State on 12/12/07 ... played an average of 7.0 minutes per game ... named Academic All-MWC.

FRESHMAN - (2006-2007): Final player notes: Played in a total of 23 games averaging 3.1 minutes of playing time ... of those 23 contests, eight were against conference opponents and she also saw action in the NCAA first round game vs. Louisville on 03/17/07 ... picked up a season high in points with three in the first game of the year vs. ISU on 11/10/06 ... grabbed a season and career high rebounds with three @ Baylor on 11/16/06 ... dished out a season and career high three assists vs. AF on 02/08/07, and in that same game played a new season and career high 13 minutes.

Judkins

Points:

Rebounds:

3-PT FG's made:

Assists:

Steals:

Season Highs

6 @ Washington, 11/20/09

3 vs. UVU, 11/13/09

2 @ Washington, 11/20/09

4 vs. Hawaii @ Hukilau Inv. 12/5/09

Career Highs

7 @ Portland, 01/03/09

same, twice more

same

same

1 @ AF, 3/1/08, four more

Judkins Stats										
Yr	G/GS	FG-FGA %	3FG-3FGA %	FT-FTA %	Pts.	Reb.	A.	To.	Bl.	St.
07	23/0	1-6 .167	1-4 .250	2-5 .400	5	13	7	11	0	2
08	26/1	5-26 .192	4-22 .182	4-4 1.000	18	14	18	17	0	5
09	19/0	4-13 .308	3-10 .300	6-7 .857	17	6	7	3	0	3
10	20/0	8-19 .421	4-15 .267	3-5 .600	23	15	14	6	0	6

Jazmine Foreman

Guard

5-5, Junior

Vancouver, WA - Hudson's Bay HS

#3



At BYU

JUNIOR - (2009-2010): had 11 points in the home win over Utah on 3/3/10 marking her 12th season and 18th career double figure game ... picked up 12 points for her 11th season and 17th career double figure contest in the road game at SDSU on 2/24/10 ... tallied a team high 13 points in the home victory over Wyoming on 2/20/10 for her 10th season and 16th career double digit scoring output ... led all scorers with 17 points in the road win at Air Force on 2/13/10 marking her ninth season and 15th career double figure game, the points were the third best scoring output in league play to date, the (.600, 6-10) field goal percentage is the best this year and in her career, also had five steals which are the most in league action to date ... recorded her first season and career double double with 11 points and 11 assists in the win vs. UNLV on 2/6/10, the 11 assists were team and game highs, the double digit scoring is her eighth season and 14th overall ... was one of five players scoring in double figures in the home victory over SDSU on 1/23/10 with 13 points for her seventh season and 13th overall, in the same game grabbed nine boards for new season highs which also tie for career highs ... picked up her sixth double digit contest of the year with 12 points in the road win at CSU on 1/16/10 which is also her 12th career double figure outing, in the same game dished out a team and game high six assists which also tie for season highs in that category ... scored in double figures for the fifth time this season and 11th career with 19 points in the league home win over the Air Force on 1/13/10, 15 of the them were from making five 3-pointers which were also new season and career highs in that category, the total points were team and game highs ... led all scorers with 19 points in the league win at UNLV on 1/6/10 recording her fourth double figure game of the season and her 10th in her career ... with the six assists in the home win over Nevada ties her season high in that category and also ties the number of assists she dished out her freshman season with 43 ... dished out six assists in the home game vs. Portland tying her season high in the assist category ... in the game at Utah State on 12/19/09 dished out a season high six assists ... picked up her third double figure game of the year and ninth career with 11 points at Weber State on 12/9/09 and also tallied six steals for season and career highs in that category ... scored a season and career high 21 points in the win over Hawaii on 12/5/09, and the points were team and game highs, they mark her eighth career double figure outing and her second this season ... of the 21 points scored in the Hawaii game, 12 were from three-point range while the four treys were season and career high in three pointers made in a game ... in the game vs. Hawaii led the team in steals with five and were also team and game highs ... dished out a season high five assists in the win over San Francisco on 12/4/09 ... recorded 11 points in the home game vs. Kansas State on 11/27/09 for her first double digit performance of the season and her seventh overall, also grabbed season highs in rebounds with five ... grabbed four boards at Montana State on 11/20/09 for season highs in that category ... grabbed two rebounds, had one point, one assist and one steal in the first road game of the season at Washington on 11/18/09 ... started in the first game of the year vs. UVU on 11/13/09 scoring seven points and dishing out two assists.

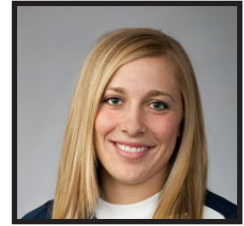
SOPHOMORE - (2008-2009): Final player notes: Started in all but the first game of the year ... recorded her sixth season and career double digit contest with 11 points in the game at Utah on 2/28/09 ... led the team in points with 10 vs. AFA on 2/4/09 marking her fifth double-digit scoring performance of the season and career ... had back-to-back league games where she grabbed six rebounds, vs. Utah on 1/28/09 and at Wyoming on 1/31/09 ... led the team and game in points with 16 vs. UNM on 1/17/09 marking her fourth double digit performance of the year and career ... grabbed a team, season, and career high nine boards in the road win at TCU on 1/13/09 ... scored a season and career high 19 points vs. USC on 12/6/08 to lead all scorers, she also had a team and game high six assists and she was perfect from the free-throw line 4-4, two of those points sealed the Cougar victory over the Trojans in the final seconds of the contest ... the 19 points marked her third double figure performance of the season... dished out eight assists vs. Wright St., on 12/5/08 for new season highs ... led or tied the team in assists in a total of 17 games and in steals in six contests ... ranks first in the assist category with 113 and second in steals with 42, four of those coming vs. Weber St., on 12/10/08 for season and career highs ... finishes the sophomore season ranked fourth in a total of five categories: points 6.8; field goals made with 70; free throws made with 36; rebounds, grabbing 4.0 per game ... and in defensive boards with a total of 90 for a 3.1 average ... ranks third in two categories: field goal attempts with 219 for a 7.6 average; three-point field goals made with 24 ... places second in the three-point field goal attempts category with 88 and a 3.0 average ... ranks fifth in the free throw attempts category with a total of 43 for a 1.5 average ... has the squads second best free throw percentage at .744 (32-43) ... had back-to-back double digit scoring performances, 12 at Portland St., and 10 at Nevada ... in MWC action finished the year in third place in the assists category in all games and in league play, placed in 10th place in all games in the steals category (1.45), and fourth and third respectively in all games and league action in the assists/turnover ratio category.

Foreman	Season Highs	Career Highs
Points:	21 vs. Hawaii @ Hukilau Inv., 12/5/09	same
Rebounds:	9 vs. San Diego St., 1/23/10	same, once more
3-PT FG's made:	5 vs. AFA, 1/13/10	same
Assists:	11 vs. UNLV, 2/6/10	same
Steals:	6 @ Weber State, 12/9/09	same

Foreman Stats										
Yr	G/GS	FG-FGA %	3FG-3FGA %	FT-FTA %	Pts.	Reb.	A.	To.	Bl.	St.
08	29/9	17-75 .227	8-36 .222	8-16 .500	50	28	43	50	0	11
09	29/28	70-219 .320	24-88 .273	32-43 .744	196	115	113	82	1	42
10	28/28	92-215 .428	42-106 .396	47-60 .783	273	89	104	75	4	55

Haley Hall
Guard
5-4, Junior
Syracuse, UT - Clearfield HS

#33



At BYU

JUNIOR - (2009-2010): had a team high 17 points in the home victory vs. TCU on 3/6/10 for her second straight, 12th season and 15th career double figure outing and also tied her season and career high in steals with five ... had 11 points in the home win over Utah on 3/3/10 marking her 12th season and 18th career double figure game ... put up 12 points in the home win over Wyoming on 2/20/10 for her 10th season and 13th career double digit game, in that same contest had five steals which tie for season and career highs to date ... dished out nine assists for season and career highs in that category in the home win over CSU on 2/17/10 ... had four steals in the road win at Air Force on 2/13/10 which are the most in league action to date ... led all scorers with 22 points in the home win over UNLV on 2/6/10 recording her ninth season and 12th double digit performance of the year ... picked up season and career highs in points and in rebounds with 24 and nine respectively in the road win at Utah on 1/30/10, the points were game and team highs and they marked her eighth season and 11th career double figure outing, in the same game she made 10 three pointers which are season, career, team and game highs, she also shot (.693, 9-13) from the field and (.666, 6-9) from three point range both of which are season and career bests ... was one of five players to put up double figure points in the home victory over SDSU on 1/23/10 with 11 points recording her seventh season and 11th career double digit outing ... in the road game at Wyoming on 1/19/10 picked up her sixth season and 10th career double digit outing with 11 points ... playing in her third MWC game of the 2010 campaign, picked up five points, five rebounds and five assists in the road win at CSU on 1/16/10 ... grabbed six rebounds in the home win vs. Nevada on 1/2/10 for new season and career highs in that category, also scored 11 points for her fifth season and ninth career double figure contest scored 10 points vs. Portland on 12/31/09 recording her fourth this season and eighth in her career and also grabbed five rebounds tying her season and career high in that category ... tied season and career highs in rebounds at Utah State with five ... picked up 10 points vs. Kansas St., on 11/27/09 for her seventh in her career ... recorded season and career highs in steals with five in the road game at SUU on 11/24/09 ... for the second straight time scored in double digits with 12 at Montana State on 11/20/09 for her fifth career outing and second this year, all of the points came from three-point range ... led the team in points with 14 at Washington on 11/18/09 for season highs, also grabbed a career high five rebounds in that same contest, and the points were one shy of her career of 15 which she scored at Stanford on 11/13/06 ... started in the first contest of the year dishing out a team and game high eight assists which are also career highs.

SOPHOMORE - (2008-2009): Started in the first game of the year at Portland St., on 11/14/08, tallying 11 points and was 6-6 at the free throw line ... suffered a season-ending ACL injury to her right knee with a minute left in the same game ... did not play the rest of the season ... named MWC Academic All-Conference.

(2007-08): Injury redshirt

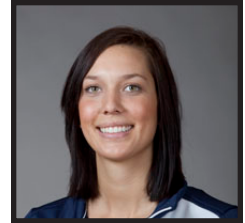
FRESHMAN - (2006-2007): Final player notes: Suffered season ending injury with a torn ACL to her left knee in the game @ New Mexico State on 12/06/06 ... Had played in all games to date ... picked up a season and career 15 points @ No. 4 Stanford on 11/10/06 to lead all scorers in that game ... had four three-pointers in the same game ... scored in double figures in two games to date (15) @ Stanford, (10) @ Harvard.

Hall	Season Highs	Career Highs
Points:	24 @ Utah, 1/30/10	same
Rebounds:	9 @ Utah, 1/30/10	same
3-PT FG's made:	6 @ Utah, 1/30/10	same
Assists:	9 vs. CSU, 02/17/10	same
Steals:	5 vs. TCU, 3/06/10	same, twice more
Blocks:	2 vs. Air Force, 1/13/10	same

		Hall Stats								
Yr	G/GS	FG-FGA %	3FG-3FGA %	FT-FTA %	Pts.	Reb.	A.	To.	Bl.	St.
07	7/0	15-39 .385	9-20 .450	5-8 .625	44	12	17	19	1	6
08	Injury redshirt									
09	1/1	2-9 .222	1-3 .333	6-6 1.000	11	3	4	5	0	4
10	28/28	91-246 .370	52-141 .369	13-20 .650	247	106	118	55	5	67

Megan Marks Leach
Forward
6-2, Junior
South Jordan, UT - Bingham HS

#55



At BYU

JUNIOR - (2009-2010): grabbed two rebounds for season highs in that category in the road game at UNM on 2/27/10 ... was perfect at the line 2-2, had one assist and one block in the road win at AF on 2/13/10 ... after seeing playing time in the road game at TCU has tallied the most blocks and steals in her career with eight and four respectively, in that same game picked up season and career highs in steals with two ... picked up two blocks in the road win at Utah on 1/30/10 for new season and career highs in that category ... has seen playing time in 11 games to date including the road game at UNM on 2/27/10 ... played 12 minutes in the first game of the 2009-10 season grabbing three defensive rebounds, had one block and one steal in the same game.

SOPHOMORE - (2008-2009): Final player notes: played in a total of 16 games off the bench ... of those 16 contests eight were non conference and eight were league games ... dished out new career and season highs in assists with three vs. SDSU n 2/25/09 ... grabbed new season and career highs in the rebound category with six at Portland on 01/03/09 ... scored eight points in the game vs. SUU on 11/28/08 for new season and career highs in that category, and was a perfect 4-4 from the field ... with the eight points she surpassed last year's total points by two to 10 ... averaged 4.9 minutes of playing time with the most minutes coming in the game vs. SUU on 11/28/08 when she played for 11 minutes ... in three games she played 10 minutes at Portland, vs. the Air Force Academy and vs. San Diego State ... recorded a total of 26 rebounds and 23 points in her second season.

FRESHMAN - (2007-2008): Final player notes: played in 14 of the 29 games on the year ... averaged 3.9 minutes of playing time ... picked up season and career high in points with three in the game at Wyoming on 3/5/08 ... grabbed four rebounds in two games, at Wyoming on 3/5/08 and vs. Fresno State on 11/17/07 ... had a season and career high two blocks @ Utah on 2/19/08 ... played the most minutes (17) @ Wyoming on 3/5/08 ... named Academic All-MWC.

Leach

Points:

Rebounds:

3-PT FG's made:

Assists:

Steals:

Blocks:

Season Highs

2 @ AFA, 2/13/10

2 @ UNM, 2/27/10

2 @ AFA, 2/13/10

2 @ TCU, 2/3/10

2 @ Utah, 1/30/10

Career Highs

8 vs. SUU, 11/28/08

6 @ Portland, 01/03/09

1 @ Wyoming, 03/05/08

3 vs. SDSU, 2/25/09

same

2 same, once more

		Leach Stats								
Yr	G/GS	FG-FGA %	3FG-3FGA %	FT-FTA %	Pts.	Reb.	A.	To.	Bl.	St.
08	14/0	3-13 .231	1-6 .167	1-3 .333	8	14	1	2	4	0
09	16/0	9-18 .500	2-4 .500	3-8 .375	23	26	7	11	2	2
10	11/0	0-14 .000	0-6 .000	4-5 .800	4	12	2	3	9	4

Keilani Moeaki

Forward

6-2, Junior

Warrenville, IL - Weaton Warrenville HS

#45



At BYU

JUNIOR - (2009-2010): had three blocks in the home victory over Wyoming on 2/20/10 for season and career highs ... tied her season high in points with nine in league play in the road win at AF on 2/13/10, also dished out three assists and three steals which are season highs and tie for career highs ... led the team in points with nine in the road game at TCU on 2/3/10 ... scored 11 points at Weber State on 12/9/09 recording her third season and 11th career double figure outing, and also had a season high in rebounds grabbing seven ... picked up her second double figure contest of the season with 11 points and her 10th overall in the game at Washington on 11/18/09 ... started in the season opener recording 14 points for her first double figure game of the year and her ninth career ... in the same game grabbed four offensive rebounds

SOPHOMORE - (2008-2009): Final player notes: started in all but four contests, starting with the SDSU game on 2/25/09 ... with a team and game high 13 points in the road game at Wyoming on 1/31/09 she now has five double digit contests this season and eight in her career ... recorded 12 points in the home game vs. Utah for her fourth this year and her seventh overall double digit performance ... grabbed eight boards vs. Utah St., which mark new season and career bests ... picked up 14 points at Nevada for new season highs ... led or tied the team in points and in rebounds in two contests on the year ... topped or tied the team in blocked shots in a total of 10 games ... places first on the squad in blocked shots with 19 ... finishes ranked third in the field goal percentage category .406, 63-155 ... grabbed 40 offensive boards which puts her in fourth place in that category ... in the field goals made category with a 63 total for a 2.2 average ... recorded 22 steals in all games placing sixth in that category ... ranks seventh in the rebound category grabbing 2.8 boards per contest ... in the MWC placed 13th and 12th respectively in the blocked shots category in all games and in league play.

FRESHMAN - (2007-2008): Final player notes: played in all 29 games and started in nine ... averaged 16.4 minutes of playing time per game ... picked up a season and career high 19 points and seven rebounds vs. Hartford on 11/20/07, in that same game was .700 (7-10) from the free throw line, and had three steals for season and career highs ... finished ranked sixth in scoring on the team with 3.6 points and tied for fourth place in the rebound category, grabbing 2.9 boards per contest ... was perfect from the free throw line 4-4 at USU on 12/29/07 ... ranked third in offensive rebounds with 33 (1.1) ... placed fourth in three categories on the team: field goal percentage .433 (39-90), free throw attempts 40 (1.4) and free throws made 20 (0.9) ... ranked seventh on the team at the end of the year in free throw percentage .650 (26-40).

Moeaki

Points:

Rebounds:

3-PT FG's made:

Assists:

Steals:

Blocks:

Season Highs

14 vs. UVU, 11/13/09

7 @ Weber St., 12/9/09

3 @ Air Force, 02/13/10

3 @ Air Force, 02/13/10

3 vs. Wyoming, 2/20/10

Career Highs

19 vs. Hartford, 11/20/07

8 vs. Utah State, 12/13/08

1 vs. Utah, 1/19/08

same, three more

same, four more

same

Moeaki Stats

Yr	G/GS	FG-FGA	%	3FG-3fGA	%	FT-FTA	%	Pts.	Reb.	A.	To.	Bl.	St.
08	29/9	39-90	.433	1-2	.500	26-40	.650	105	84	26	70	7	8
09	29/25	63-155	.406	4-17	.235	24-37	.649	154	81	18	64	19	22
10	28/28	52-120	.433	7-17	.412	20-34	.588	131	60	28	44	8	11

Mindy Bonham (Nielson)
Guard
5-10, Junior
Centennial, CO - Regis Jesuit HS

#22



At BYU

JUNIOR - (2009-10): scored 12 points in the home victory over TCU on 3/6/10 for her second straight, 19th season and 38th overall double digit performance, also had nine assists which tie for season and career highs ... tallied 12 points in the home win over Utah on 3/3/10 marking her 18th season and 37th overall double figure contest, in the same game tied her season and career high in steals with six and they were also team and game highs ... led the team in points with 19 in the road game at SDSU on 2/24/10 for her 17th season and 36th double digit scoring performance, she also shot (.727, 8-11) from the field for season and career bests in that category ... had 14 points in the home win over CSU on 2/17/10 for her 16th season, 35th career and third straight double figure game ... scored 13 points in the road win at AF marking her 15th season and 34th career double-digit outing ... put up 13 points in the home victory over UNLV on 2/6/10 for her 14th season and 33rd career double digit outing ... grabbed eight boards in the road win at Utah on 1/30/10 which tie for season and career highs ... led all scorers with 18 points in the home game vs. New Mexico on 1/27/10 recording her 13th season, 32nd career and second straight double figure outing, the 18 were also the most in league play to date ... was one of five players who tallied double digits in the home victory over SDSU on 1/23/10 with 13 points for her 12th season and 31st career outing ... recorded her 11th season and 30th career double digit performance with 11 points in the road win at CSU on 1/16/10 ... dished out nine assists for the second straight time in the home win over Air Force on 1/13/10, the assists were also team and game highs ... scored 11 points and dished out nine assists in the win over the Rebels on 1/6/10 for her 10th double digit performance of the year and her 29th overall, the nine assists are new season highs and tie for career highs and were team and game highs ... picked up her ninth double figure game of the season and 28th career with 13 points vs. Portland on 12/31/09 and also making it her fourth straight ... scored 12 points for team highs in the road game at Utah State on 12/19/09 for her eighth double digit game of the season and her 27th overall and it was her third straight game in which she has scored in double digits, also dished out seven assists for new season highs ... picked up season highs in points with 24 in the road game at CS Fullerton marking her seventh double figure contest of the season and her 26th overall, the points were team highs and tied for game highs, also dished out a season high in assists with four ... led all scorers with 18 points at Weber State on 12/9/09 for her sixth double digit game this year and 25th in her career ... scored 14 points in the game vs. San Francisco on 12/4/09 marking her fifth season and 24th career double figure game ... tied her career-high with eight rebounds and led the team with 13 points vs. Kansas St., on 11/27/09 marking the fourth time scoring in double figures this season and 23rd in her career ... for a third straight time scored in double figures with 11 points at Montana State on 11/20/09 making it her 22nd overall ... picked up her second consecutive double digit outing with 10 points in the game at Washington on 11/18/09 marking her 21st overall and second this year ... started in the first game of the season where she scored 14 points, dished out two assist and had three steals.

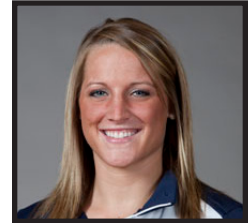
SOPHOMORE - (2008-2009): Final player notes: started in all games ... named to the All-MWC Third Team and to the All-Defensive Team ... scored 11 points in the game at AFA on 3/7/09 for her 12th and 18th season and career double figure game which also mark four straight double digit contests ... led the team in scoring with 14 points in the contest at Utah on 2/28/09 marking her 10th double digit game of the year and 17th overall ... recorded her ninth double digit game of the year and 16th overall with a team high 13 points in the home win vs. UNLV on 2/21/09 ... tallied a team and game high four steals in the road game at Wyoming on 1/31/09 ... had new season and career highs in steals with six in the road win at UNLV on 1/21/09 ... in that same game posted 21 points to lead all scorers, and mark her eighth double figure game of the year and 15th career ... grabbed eight boards in the home game vs. UNM on 1/17/09 for new season and career highs in that category ... scored a team and game high 22 points in the road win at TCU on 1/13/09 for the second best scoring performance of the season and career ... the 22 points also marked her seventh and 14th career double digit output ... led the team and game in scoring with 13 vs. Arkansas St., on 12/30/08 for her sixth double digit contest of the year and the 13th in her career ... grabbed a total of seven boards for new season highs and tied her career high as well in the home win vs. CSU ... tallied 12 points in the game at Long Beach St., for her fifth double figure game of the year and 12th career ... tied her season best seven assists vs. Utah St., ... contributed 11 points in the home win against Weber St., on 12/10/08 marking her fourth double figure contest of the year and 11th overall ... scored 20 points vs. Wright State for her third double digit output of the season and her 10th overall ... tallied new season and career highs in points with 27 at Nevada ... the 27 points were game and team highs as well ... was 9-10 from the free throw line in that same game ... leads the team in scoring and in steals with 10.4 points and a total of 65 steals ... is second in assists dishing out 93 this year ... has the best free throw percentage on the team .787, (37-47) ... topped or tied the list in points in a total of 10 games; in assists in 11 contests; and in steals in 14 games ... finishes the year ranked first in both field goals attempted and made with 313 and 123 respectively ... ranks fourth on the squad in four categories: field goal percentage .393, 123-313; in three-point field goals attempted 83; three-point field goals made with 20; free throw attempts with 47 for a 1.6 average per game ... places second in the free throw made category with a total of 37 and a 1.3 average ... had a total of 16 blocked shots which put her in third place in that category., is also in third place in defensive boards with 92 for a 3.2 average ... and finishes in the fifth spot in rebounds with a total of 114 for a 3.9 average ... in the MWC finished her sophomore season with a 19th and 16th place finish in scoring in all games and in league play, ended ranked 15th in league games in field goal percentage .399 (67-168), in the assists category ranked seventh and ninth respectively in all contests and in MWC games, placed third and first in the steals category in all games and in MWC contests, and ranked fifth in all games in the assist/turnover ratio category.

Bonham (Nielson)	Season Highs	Career Highs
Points:	24 @ CS Fullerton, 12/12/09	27 @ Nevada, 11/18/08
Rebounds:	8 @ Utah, 1/30/10	same, twice more
3-PT FG's made:		3 @ UNLV, 2/16/08, once more
Assists:	9 vs. TCU, 3/6/10, twice more	same, twice more
Steals:	6 vs. Utah, 03/03/10	same, twice more
Blocks:	2 @ CS Fullerton, 12/12/09	5 vs. Utah Valley, 12/08/07

Bonham (Nielson) Stats													
Yr	G/GS	FG-FGA	%	3FG-3FGA	%	FT-FTA	%	Pts.	Reb.	A.	To.	Bl.	St.
08	29/19	74-200	.370	17-58	.293	46-65	.708	211	85	80	95	20	46
09	29/29	123-313	.393	20-83	.241	37-47	.787	303	114	93	69	16	65
10	28/28	128-280	.457	25-70	.357	39-49	.796	320	119	111	86	7	51

Coriann Wood
Forward
6-1, Junior
Basin City, WA - Cornell HS

#23



At BYU

JUNIOR - (2009-10): dished out four assists in the home win over Utah on 3/3/10 tying her season and career highs in that category ... tie her season and career high in blocked shots with two in the road game at UNM on 2/27/10 ... recorded her 16th double figure game of the season and her 25th in her career with 18 points in the road game at San Diego State on 2/24/10, and tied her season and career highs in three pointers made in a game with four ... scored 11 points in the home win over Wyoming on 2/20/10 for her 15th time scoring in double digits this year and the 24th in her career ... led all scorers with 18 points in the home win over CSU on 2/17/10 for her 14th season, 23rd overall and second straight double figure outing ... put up 10 points in the road victory at AF on 2/13/10 marking her 13th season and 22nd overall double figure game ... scored 10 points in the road win at Utah on 1/30/10 for her 12th season and 21st career double digit performance ... was one of five players to score in double figures in the home victory over SDSU on 1/23/10 with 10 points which mark her 11th season and 20th career double figure performances ... led all scorers and picked up new season and career highs in points with 21 in the road win at CSU on 1/16/10 for her ninth season and 18th career double digit outing ... recorded her second double double of the season and career at UNLV on 1/6/10 with 17 points and 10 rebounds, has now scored in double figures in a total of eight games this year, 17 overall and five straight, the total boards were team and game highs ... scored 12 points for team and game highs in the home win vs. Nevada on 1/2/10 which mark the seventh and 16th double digit outing of her career and in that same contest was perfect from both the free throw line (2-2) and from behind the arc (2-2) ... picked up new season and career highs in points with 17 vs. Portland on 12/31/09 recording her six double digit outing of the year and her 15th overall, the points were also team and game highs and she had scored 15 of the 17 points in the first half of the game ... scored 12 points in the road game at Utah State on 12/19/09 recording her fifth double figure contest of the season and her 14th overall, was perfect from the free throw line going (6-6) and it was her second consecutive double figure contest of the season to date ... picked up her first double double of her career with 16 points and 10 rebounds in the road game at CS Fullerton on 12/12/09 marking her fourth double digit performance this season and her 13th overall, the 16 points were season and career highs, and of the total points, nine were from three-point range which are season highs ... in the CS Fullerton game also dished out two assists for season highs to date ... led all players grabbing 11 boards in the game at Weber State on 12/9/09 for season and career highs in the rebound category ... grabbed nine boards in the game vs. Hawaii on 12/5/09 which tie for season and career highs ... tied her career-and-season record with two blocks in the game vs. Kansas St., 11/27/09 and also had two steals for season and career highs ... tied for team and game highs in points with 12 at SUU on 11/24/09 for her third double digit outing of the season and her 12th overall, the points are also season highs to date ... scored 11 points in the road game at Washington on 11/18/09 for her second straight double figure contest of the year and 11th in her career ... came off the bench to score 10 points in the home opener vs. UVU on 11/13/09 marking her first double figure contest of the season and her 10th overall ... grabbed a team and game high eight boards in that same game.

SOPHOMORE - (2008-2009): Final player notes: played in all games, starting in three vs. SDSU on 2/25/09; at Utah and vs. Wyoming ... scored 13 points in the home win vs. UNLV on 2/21/09, her sixth double digit performance of the year and seventh overall ... grabbed nine boards for team, season, and career-highs vs. AF on 2/4/09 ... tallied six rebounds in each of the last two MWC games, vs. Utah on 1/28/09 and at Wyoming on 1/31/09 ... recorded a team high 13 points in the home game vs. Utah for her seventh double digit contest of the year and her eighth overall, and in that same game dished out new season and career highs in assists with three ... tied season highs in both assists and steals with two each vs. CSU on 1/10/09 ... had two blocks for new season and career highs in that category in the home win vs. CSU on 01/10/09 ... grabbed new season and career highs in the rebound category with eight vs. USC, on 12/06/08 ... recorded her sixth double figure game of the year and seventh career with 10 points in the game at Long Beach St., ... has a total of five double digit scoring performances on the year and six overall with the 13 points scored vs. Utah St., on 12/13/08 ... the points mark three back-to-back double figure games with the 15 vs. Weber St., (which were season and career highs) and 14 vs. USC ... in the home game vs. SUU on 11/28/08 scored 10 points which at that time tied her season high ... in the game at Nevada on 11/18/08 tied her career highs in rebounds with five ... in the home game vs. UConn was perfect from the line 4-4 ... is in second place on the team in rebounds grabbing 4.8 boards per contest ... is in fifth place on the team in points scoring 6.4 per contest ... has the team's best three-point field goal percentage (.330, 30-90) ... led or tied in the rebound category in a total of six contests and in blocked shots in three ... ended the season ranked first in four categories: three-point field goal attempts with 90; three-point field goals made with 30; free throw attempts with 51 for a 1.8 average; free throws made with a total of 37 for a 1.3 average ... places second in two: three-point percentage .333, 30-90; defensive board grabbing 102 for a 3.5 average ... attempted 186 field goals which places her in fourth place in that category ... ranks fifth in three categories: offensive rebounds with 37; assists with 19; steals with 22 ... in the MWC tied for 13th place in the three-point field goal percentage category in all games ... named MWC Academic All-Conference.

Wood	Season Highs	Career Highs
Points:	21 @ CSU, 1/16/10	same
Rebounds:	11 @ Weber State, 12/9/09	same
3-PT FG's made:	3 @ CS Fullerton, 12/12/09	same, once more
Assists:	3 @ Air Force, 02/13/10	same, once more
Steals:		2 vs. CSU, 01/10/09, once more
Blocks:	2 @ UNM, 02/27/10, once more	same, three more

		Wood Stats									
Yr	G/GS	FG-FGA %	3FG-3FGA %	FT-FTA %	Pts.	Reb.	A.	To.	Bl.	St.	
08	27/1	31-94 .330	10-47 .213	20-22 .909	92	63	7	29	5	7	
09	29/3	60-186 .323	30-90 .333	37-51 .725	187	139	19	43	9	22	
10	28/0	102-235 .434	45-99 .455	36-49 .735	285	149	27	48	23	11	

Marie Beck
Guard
5-8, Junior
Oxnard, CA - Channel Islands HS

#31



At BYU

JUNIOR - (2009-10): has seen action in a total of 14 games ... playing in her 12th game of the season and her fifth league contest scored two points in two minutes coming off the bench in the road win at AFA on 2/13/10 ... in the second road game of the season at Montana State on 11/20/09 scored a three pointer for her first points of the season after playing just two minutes ... played four minutes in the home opener of the year vs. UVU on 11/13/09.
SOPHOMORE - (2008-2009): Saw action in three contests during the season; in the game at Long Beach State on 12/20, and the two home MWC games against the Air Force Academy on 2/4/09 and San Diego State on 2/2/09 ... averaged nearly two minutes of playing time in each game.
FRESHMAN - (2007-08): Saw action in three games on the year ... received an MWC Scholar Athlete Award.

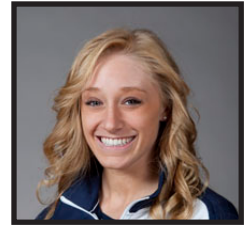
Before BYU

School Valedictorian, Ventura County Star Athlete ... AP Scholar ... Top Honors Scholar ... Three-year letterwinner in basketball ... MVP in 2007 ... Athlete of the Year in 2007 ... Second Team All League in 2006 ... First Team All League 2007 ... Second Team All County 2007 ... four-year letterwinner in softball ... three time softball MVP 2005-2007.

Beck Stats										
Yr	G/GS	FG-FGA %	3FG-3FGA %	FT-FTA %	Pts.	Reb.	A.	To.	Bl.	St.
08	3/0	0-0 .000	0-1 .000	0-0 .000	0	1	0	0	0	0
09	3/0	0-1 .000	0-1 .000	1-2 .500	1	2	0	0	0	0
10	14/0	3-7 .429	1-4 .250	0-0 .000	7	6	1	8	0	1

Stephanie Buhler Bates

#21



Forward

6-0, Sophomore

Oregon City, OR - Oregon City HS

At BYU

SOPHOMORE - (2009-10): in the road game at UNM on 2/27/10 grabbed two rebounds for season and career highs in that category ... has played in 14 of the 27 games to date including the road league game at Air Force on 2/13/10 ... made her first three pointer of the season at SUU on 11/24/09 ... saw nine minutes of action in the road game at Montana State on 11/20/09 ... played six minutes in the home game vs. UVU on 11/13/09.

FRESHMAN - (2008-2009): Final player notes: played in 19 games off the bench ... of those games six were nonconference and 13 were MWC contests ... tied her season and career highs in points with nine at UNLV on 3/10/09 at the 2009 MWC Champs., all coming from three-point range ... tied her season and career highs in treys with three in the game at UNLV on 3/10/09 at the 2009 MWC Champs ... picked up six points in the game at Portland on 01/03/09 ... in that same game had two steals for season and career highs as well ... scored two points in the game at Long Beach St., ... averaged 5.6 minutes of playing time, with 16 minutes being the most at Portland during the nonconference schedule and 13 minutes at UNLV at the MWC Championships ... ranks fifth in three-point field goals made with 12 ... finishes in sixth place on the team in the three-point percentage category .308, 12-39 ... recorded a total of 45 points for a 2.4 average ... was perfect from the free throw line in a total of three contests ... made three three-pointers in two contests vs. TCU and at UNLV in the MWC Championships.

FRESHMAN - (2007-2008): Redshirt

Before BYU

Four-year letterwinner in basketball ... competed one year at Sandy HS where she garnered Honorable Mention honors. At Oregon City HS ...team was Three Rivers League Champions all three seasons ... named Second Team All- League her senior year ... ranks third all time in three-point shooting ... is also tops in the free throw category ... garnered Second Team All League honors during the 2006-07 season ... ranks second in state as a three-point shooter ... two-time Honorable Mention All State ... named Oregonian Athlete of the Week ... named to the All-Tournament Team at the Delaware and the Gillett, Wyoming Classics ... in state high school competition, the 2004-05 team finished third ... in 2005-06 team finished second and in 2006-07 team ended the year in sixth place ... Played on two club teams (Triple Threat Oregon two years) ... and on (Clutch Players for three years)

Bates

Points:

Rebounds:

3-PT FG's made:

Assists:

Steals:

Season Highs

2 @ UNM, 2/27/10

Career Highs

9 @ UNLV, 03/10/09, once more
same

3 @ UNLV, 03/10/09, once more

1 vs. UConn on 11/25/08

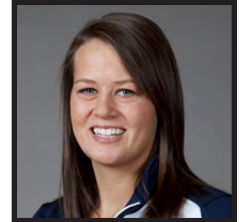
2 @ Portland, 01/03/09

Bates Stats

Yr	G/GS	FG-FGA %	3FG-3FGA %	FT-FTA %	Pts.	Reb.	A.	To.	Bl.	St.
09	19/0	15-43 .349	12-39 .308	3-3 1.000	45	3	8	11	3	6
10	14/0	3-14 .214	3-14 .214	1-2 .500	10	8	2	4	0	1

Dani Peterson
Forward
6-1, Sophomore
Salt Lake City, UT - Skyline HS

#32



At BYU

SOPHOMORE - (2009-10): came off the bench in the win over AF on 2/13/10 recording six points and three rebounds in 13 minutes of action ... grabbed five rebounds in the road game at TCU on 2/3/10 which tied for team highs ... dished out two assists in the road win at Utah on 1/30/10 for new season and career highs in that category ... has played in 26 of 28 games so far this year ... had one block in the road contest at Utah State on 12/19/09 ... grabbed season and career highs in rebounds with nine at Montana State on 11/20/09 and also scored eight points after coming off the bench for 13 minutes of playing time ... in the first road game of the season at Washington on 11/13/09 saw eight minutes of action where she grabbed one rebounds ... came off the bench to score 10 points in the home opener on 11/13/09 vs. UVU marking her first double figure contest of her career and of the season ... the 10 points scored vs. UVU mark season and career highs.

FRESHMAN - (2008-2009): Final player notes: played in 16 games off the bench, of those contests eight were nonconference and eight were MWC contests ... came off the bench to score eight points, all in the first half in the home win vs. UNLV on 2/21/09 for season and career bests in the points category ... in that same game recorded two blocks for season and career highs ... scored four points for her fourth four-point performance of the year at SDSU on 01/24/09 ... grabbed a new season and career high five boards at Portland on 1/03/09 ... tied her season best four points at Long Beach St., on 12/20/08 ... picked up four points and four in the home opener against Oregon on 11/21/08 ... averaged 6.8 minutes of playing time, playing a season high 13 minutes in three contests, at SDSU; vs. UNLV and vs. SDSU ... recorded a total of 32 points and 24 rebounds ... was perfect from the line 2-2 in three games at Long Beach St., vs. CSU and at SDSU ... named MWC Academic All-Conference.

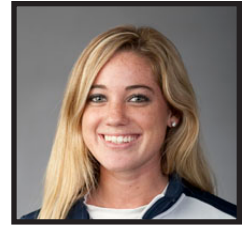
Before BYU: Four-year letterwinner in basketball ... two-time team MVP ... four-year starter ... team captain in 2007-08 ... named 2008 Utah Gatorade Player of the Year ... team won 5A Championship in 2006 and 2008 and finished second in 2007 ... named 5A Tournament MVP ... current state record-holder in individual field goal percentage with 64.8 (140-216) in 2006-07 season ... three-time Salt Lake Tribune 5A First Team All State ... two-time 5A All Tournament Team ... 2008 Deseret Morning News 5A MVP ... two-time Deseret Morning News Second Team All State ... 2008 McDonald's All-America nominee ... 2007 End of the Trail All-Tournament Team ... 2007 Adidas All-American Camp All-Star ... 2005 Pacific Coast Shootout All-Tournament Team ... played for the Salt Lake Metro Basketball Club in 2006 and 2007 and with the Utah Storm Basketball Club in 2005 ... three-year letterwinner in soccer ... team captain in 2007-08 season.

Peterson	Season Highs	Career Highs
Points:	10 vs. UVU, 11/13/09	same
Rebounds:	9 @ Montana State, 11/20/09	same
3-PT FG's made:		
Assists:	2 @ Utah on 1/30/10	same
Steals:		
Blocks:	1 @ Utah State, 12/19/09	2 vs. UNLV, 2/21/09

		Peterson Stats											
Yr	G/GS	FG-FGA	%	3FG-3FGA	%	FT-FTA	%	Pts.	Reb.	A.	To.	Bl.	St.
09	16/0	11-36	.306	0-2	.000	10-14	.714	32	24	0	7	5	3
10	26/0	38-99	.384	1-15	.067	7-16	.438	84	64	8	18	9	5

Kristen Riley
Forward
6-3, Sophomore
San Clemente, CA - San Clemente HS

#35



At BYU

SOPHOMORE - (2009-10): picked up her second season and career double double with 12 points and 10 rebounds in the home victory over TCU on 3/6/10, the 10 boards were team highs ... led the team in rebounds with nine in the road game at SDSU on 2/24/10 and also put up 11 points for her 10th season and career double digit game ... put up 11 points in the home win over CSU on 2/17/10 marking her ninth season and career double figure contest and her second straight, in the same game led team and game in rebounds grabbing nine ... scored 10 points in the win at AF on 2/13/10 for her eighth season and career double digit performance and also tied her season and career highs in steals with three ... picked up her first season and career double double with team highs in points (16) and in rebounds with (11) in the home win over SDSU on 1/23/10, the boards were game highs and career highs while the points marked her seventh season and career double figure outing ... grabbed seven boards in the league game at Wyoming on 1/19/10 to lead the team for the second straight game in the rebound category ... led the team in rebounds with nine in the road win at CSU on 1/16/10 which also tie for season highs in that category ... recorded new season and career highs in points with 17 in the home win over Air Force on 1/13/10 which mark her sixth season and career double figure outing and she also tied her season and career high in steals with three... with the 10 points scored in the home win over Nevada on 1/2/10 her overall points total is at 98 which surpasses the total of 97 points scored her freshman season, while the points mark her third season and career double figure outing ... grabbed season and career highs in the rebound category with nine in the game at Utah State on 12/19/09 which were also team highs and in that same contest tallied 11 points ... scored 15 points vs. San Francisco on 12/4/09 for her second best scoring output of the year, the points were also team and game highs and mark her second double figure game of the season and her career ... dished out three assists vs. Kansas St., on 11/27/09 for season and career highs ... at SUU on 11/24/09 recorded season and career highs in steals with three ... tallied 12 points at Montana State on 11/20/09, also grabbed six rebounds and went (.750, 6-8) from the free throw line ... scored six points and grabbed three boards in the road game at Washington on 11/18/09 ... started in the first contest of the season vs. UVU on 11/13/09 making it her second start overall ... scored eight points and grabbed six rebounds in the home opener vs. UVU.

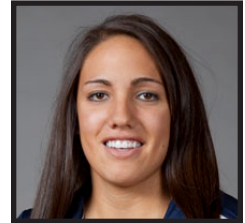
FRESHMAN - (2008-2009): Final player notes: played in all games and started in her first college game at AFA on 3/7/09 ... Named the MWC Preseason Freshman of the Year in the Preseason 2008-09 MWC Poll ... at TCU on 1/13/09 tied a season high in assists with two ... grabbed a team high eight rebounds @ SDSU on 1/24/09 for new season and career highs ... had seven boards at Portland on 01/03/09 ... has had four games where she has grabbed five rebounds ... in the home game vs. SUU on 11/28/08 scored nine points for new season and career highs, was 4-6 from the field ... in the home game vs. Oregon on 11/21/08 scored four points ... ranks sixth on the team in the rebound category grabbing 3.7 boards per game ... finished her freshman season leading or tying in the rebound category in a total of six games ... led or tied in blocked shots in nine games on the season ... ranks second in blocked shots with 17 ... places third in the offensive rebound category grabbing a total of 48 for a 1.7 average ... was perfect from the free throw line in three contests ... finished the year with a total of 105 rebounds and 97 points ... in the MWC placed 15th in the blocks category for all games.

Riley	Season Highs	Career Highs
Points:	17 vs. Air Force, 1/13/10	same
Rebounds:	11 vs. San Diego St., 1/23/10	same
3-PT FG's made:	2 vs. UVU, 11/13/09	same
Assists:	3 vs. Kansas St., 11/27/09	same
Steals:	3 @ Air Force, 2/13/10, three more	same, three more
Blocks:		3 @ SDSU, 01/24/09

Riley Stats													
Yr	G/GS	FG-FGA	%	3FG-3FGA	%	FT-FTA	%	Pts.	Reb.	A.	To.	Bl.	St.
09	29/1	34-105	.324	5-23	.217	24-42	.571	97	105	18	44	17	20
10	28/28	89-187	.476	13-46	.283	43-74	.581	234	163	37	53	18	32

Alexis Kaufusi
Forward/Center
6-1, Freshman
Provo, UT - Timpview HS

#10



At BYU

FRESHMAN - (2009-10): tallied her ninth season and career double figure contest with 10 points in the home win over TCU on 3/6/10 ... scored 11 points in the win over UNLV on 2/6/10 for her eighth season and career double digit outing of the year ... picked up her second double double of the season and career with 10 points and 11 rebounds in the home game vs. New Mexico on 1/27/10, the points were her seventh season and career double digit outing, the boards were team highs, tied for game highs, tied for season highs and were the most in league play to date ... recorded her sixth season and career double figure game with 11 points in the MWC game at Wyoming on 1/19/10 ... in the first league game of the season at UNLV on 1/6/10 scored 10 points for her fifth season and career double digit output ... scored in double figures for the fourth time this season with 12 points at CS Fullerton on 12/12/09 which once again tie for season and career highs in points ... tied her season and career high in points with 12 vs. San Francisco on 12/4/09 marking her third double figure game of the season and her career ... recorded her first double double of her career and of the season with 12 points and 11 rebounds at SUU on 11/24/09, the 12 points tied for team and game highs ... scored 12 points and grabbed nine boards in the game at Montana State on 11/20/09 recording season and career highs in both categories ... picked up season and career highs in points with five and in rebounds with three at Washington on 11/18/09 ... came off the bench to play in her first collegiate game vs. UVU on 11/13/09 in which she scored four points.

(2008-09): Redshirt

Before BYU: Four-year letterwinner in basketball ... Region Champs in 2007 and 2008 and was undefeated in 2008 ... two-time team MVP ... team captain ... two-time All-Region honoree ... two-time All-Valley accolades ... First Team All-State in 2007 and 2008 ... named state MVP... two-year letterwinner in soccer ... one year letterwinner in softball ... academic high school Honor Roll ... played three years for the Salt Lake Metro Club Team, 2006-2008.

Kaufusi	Season Highs	Career Highs
Points:	12 @ CS Fullerton, 12/12/09, three more	same, three more
Rebounds:	11 vs. New Mexico, 1/27/10, once more	same, once more
3-PT FG's made:		
Assists:	2 @ Montana State, 11/20/09	same
Steals:		
Blocks:	2 vs. New Mexico, 1/27/10, twice more	same, twice more

Kaufusi Stats													
Yr	G/GS	FG-FGA	%	3FG-3FGA	%	FT-FTA	%	Pts.	Reb.	A. To.	Bl. St.		
10	28/0	77-162	.475	1-1	1.000	37-63	.587	192	130	7	56	13	12

THE STAT CREW SYSTEM
Brigham Young University Combined Team Statistics (as of Mar 06, 2010)
All games

RECORD:	OVERALL	HOME	AWAY	NEUTRAL
ALL GAMES	20-8	10-2	8-6	2-0
CONFERENCE	11-5	7-1	4-4	0-0
NON-CONFERENCE	9-3	3-1	4-2	2-0

##	Player	gp-gs	min	avg	Total		3-Point		F-Throw		Rebounds				pf	dq	a	to	blk	stl	pts	avg
					fg-fga	fg%	3fg-fga	3fg%	ft-fa	ft%	off	def	tot	avg								
22	BONHAM, Mindy	28-28	925	33.0	128-280	.457	25-70	.357	39-49	.796	38	81	119	4.3	52	1	111	86	7	51	320	11.4
23	WOOD, Coriann	28-0	643	23.0	102-235	.434	45-99	.455	36-49	.735	46	103	149	5.3	80	3	27	48	23	11	285	10.2
03	FOREMAN, Jazmine	28-28	874	31.2	92-215	.428	42-106	.396	47-60	.783	19	70	89	3.2	71	1	104	75	4	55	273	9.8
33	HALL, Haley	28-28	909	32.5	91-246	.370	52-141	.369	13-20	.650	28	78	106	3.8	65	2	118	55	5	67	247	8.8
35	RILEY, Kristen	28-28	611	21.8	89-187	.476	13-46	.283	43-74	.581	63	100	163	5.8	69	2	37	53	18	32	234	8.4
10	KAUFUSI, Alexis	28-0	449	16.0	77-162	.475	1-1	1.000	37-63	.587	44	86	130	4.6	48	0	7	56	13	12	192	6.9
45	MOEAKI, Keilani	28-28	494	17.6	52-120	.433	7-17	.412	20-34	.588	26	34	60	2.1	45	0	28	44	8	11	131	4.7
32	PETERSON, Dani	26-0	274	10.5	38-99	.384	1-15	.067	7-16	.438	27	37	64	2.5	32	0	8	18	9	5	84	3.2
04	PARKER, Kim	8-0	102	12.8	8-19	.421	4-11	.364	4-7	.571	7	11	18	2.3	11	0	5	10	1	5	24	3.0
01	JACKSON, Jenteal	6-0	40	6.7	2-10	.200	1-5	.200	3-8	.375	2	4	6	1.0	6	0	4	2	0	3	8	1.3
13	JUDKINS, Jaime	20-0	153	7.7	8-19	.421	4-15	.267	3-5	.600	8	7	15	0.8	7	0	14	6	0	6	23	1.2
21	BATES, Stephanie	14-0	84	6.0	3-14	.214	3-14	.214	1-2	.500	2	6	8	0.6	7	0	2	4	0	1	10	0.7
31	BECK, Marie	14-0	30	2.1	3-7	.429	1-4	.250	0-0	.000	4	2	6	0.4	4	0	1	8	0	1	7	0.5
55	LEACH, Megan	11-0	62	5.6	0-14	.000	0-6	.000	4-5	.800	0	12	12	1.1	5	0	2	3	9	4	4	0.4
Team											52	67	119				8					
Total.....		28	5650		693-1627	.426	199-550	.362	257-392	.656	366	698	1064	38.0	502	9	468	476	97	264	1842	65.8
Opponents.....		28	5650		542-1463	.370	126-431	.292	375-545	.688	327	638	965	34.5	384	-	307	509	54	197	1585	56.6

TEAM STATISTICS	BY	OPP	Date	Opponent	Score	Att.
SCORING	1842	1585	11-13-09	UT VALLEY WOLVERINES	W 73-51	954
Points per game	65.8	56.6	11/18/09	at Washington	L 66-67	1773
Scoring margin	+9.2	-	11/20/09	at Montana State	W 79-54	1627
FIELD GOALS-ATT	693-1627	542-1463	11/24/09	at Southern Utah	W 72-39	438
Field goal pct	.426	.370	11/27/09	KANSAS STATE	L 62-65	937
3 POINT FG-ATT	199-550	126-431	12/04/09	vs USF	W 72-60	73
3-point FG pct	.362	.292	12/5/09	vs UH	W 81-44	65
3-pt FG made per game	7.1	4.5	12-09-09	at Weber State	Lo2 61-62	547
FREE THROWS-ATT	257-392	375-545	12/12/09	at Cal State Fullerton	W 75-72	145
Free throw pct	.656	.688	12/19/09	at Utah State	W 61-48	594
F-Throws made per game	9.2	13.4	12-31-09	PORTLAND PILOTS	W 69-57	627
REBOUNDS	1064	965	1-02-10	NEVADA WOLFPACK	W 61-41	532
Rebounds per game	38.0	34.5	*H 01/06/10	at UNLV	W 71-61	749
Rebounding margin	+3.5	-	* 01-13-10	AIR FORCE ACADEMY	W 77-46	739
ASSISTS	468	307	* 01/16/10	at Colorado State	W 67-58	1210
Assists per game	16.7	11.0	* 1/19/10	at Wyoming Cowgirls	L 54-69	3123
TURNOVERS	476	509	* 01/23/10	SAN DIEGO ST AZTECS	W 73-63	974
Turnovers per game	17.0	18.2	* 01/27/10	NEW MEXICO LOBOS	L 57-60	775
Turnover margin	+1.2	-	* 01/30/10	at Utah	W 69-52	3155
Assist/turnover ratio	1.0	0.6	* 02/03/10	at TCU	L 40-64	2328
STEALS	264	197	* 02/06/10	UNLV REBELS	W 76-60	896
Steals per game	9.4	7.0	* 02/13/10	at Air Force	W 78-53	210
BLOCKS	97	54	* 2/17/10	COLORADO STATE	W 72-54	807
Blocks per game	3.5	1.9	* 2/20/10	WY	W 51-48	1147
ATTENDANCE	11552	25110	* 2-24-10	at San Diego State	L 71-73	713
Home games-Avg/Game	12-963	14-1784	* 2/27/10	at New Mexico	L 30-62	8360
Neutral site-Avg/Game	-	2-69	* 3/3/2010	UTAH UTES	W 54-37	1783
			* 3/6/2010	TC HORNED FROGS	W 70-65	1381

Score by Periods	1st	2nd	OT	OT2	Totals
Brigham Young Univer	918	912	6	6	1842
Opponents	721	851	6	7	1585

* = Conference game

THE STAT CREW SYSTEM
Brigham Young University Combined Team Statistics (as of Mar 06, 2010)
Conference games

RECORD:	OVERALL	HOME	AWAY	NEUTRAL
ALL GAMES	11-5	7-1	4-4	0-0
CONFERENCE	11-5	7-1	4-4	0-0
NON-CONFERENCE	0-0	0-0	0-0	0-0

##	Player	gp-gs	min	avg	Total		3-Point		F-Throw		Rebounds				pf	dq	a	to	blk	stl	pts	avg
					fg-fga	fg%	3fg-fga	3fg%	ft-fa	ft%	off	def	tot	avg								
22	BONHAM,Mindy	16-16	561	35.1	70-158	.443	13-38	.342	22-31	.710	17	51	68	4.3	27	1	75	51	3	27	175	10.9
03	FOREMAN,Jazmine	16-16	534	33.4	56-140	.400	27-76	.355	30-34	.882	9	42	51	3.2	44	1	61	41	3	31	169	10.6
23	WOOD,Coriann	16-0	385	24.1	60-140	.429	29-64	.453	16-23	.696	21	56	77	4.8	41	2	21	24	12	9	165	10.3
33	HALL, Haley	16-16	548	34.2	56-151	.371	29-81	.358	9-12	.750	18	51	69	4.3	39	1	65	35	5	35	150	9.4
35	RILEY,Kristen	16-16	366	22.9	51-106	.481	8-25	.320	24-35	.686	43	61	104	6.5	43	2	20	29	8	22	134	8.4
10	KAUFUSI, Alexis	16-0	269	16.8	43-93	.462	1-1	1.000	21-36	.583	17	44	61	3.8	27	0	3	29	8	4	108	6.8
45	MOEAKI,Keilani	16-16	263	16.4	23-56	.411	3-7	.429	12-16	.750	6	20	26	1.6	24	0	15	20	6	6	61	3.8
32	PETERSON,Dani	14-0	147	10.5	17-47	.362	1-7	.143	2-4	.500	14	16	30	2.1	16	0	5	8	4	2	37	2.6
31	BECK,Marie	7-0	14	2.0	2-4	.500	0-1	.000	0-0	.000	1	1	2	0.3	2	0	1	1	0	0	4	0.6
21	BATES,Stephanie	6-0	24	4.0	1-5	.200	1-5	.200	0-0	.000	0	3	3	0.5	1	0	1	1	0	0	3	0.5
55	LEACH,Megan	6-0	26	4.3	0-4	.000	0-2	.000	2-3	.667	0	4	4	0.7	3	0	2	2	5	2	2	0.3
13	JUDKINS,Jaime	11-0	63	5.7	1-6	.167	0-5	.000	0-1	.000	2	2	4	0.4	1	0	5	2	0	4	2	0.2
Team											31	40	71				6					
Total.....		16	3200		380-910	.418	112-312	.359	138-195	.708	179	391	570	35.6	268	7	274	249	54	142	1010	63.1
Opponents.....		16	3200		315-834	.378	84-274	.307	211-309	.683	188	385	573	35.8	204	-	200	276	31	113	925	57.8

TEAM STATISTICS	BY	OPP	Date	Opponent	Score	Att.
SCORING	1010	925	*H 01/06/10	at UNLV	w 71-61	749
Points per game	63.1	57.8	* 01-13-10	AIR FORCE ACADEMY	w 77-46	739
Scoring margin	+5.3	-	* 01/16/10	at Colorado State	w 67-58	1210
FIELD GOALS-ATT	380-910	315-834	* 1/19/10	at Wyoming Cowgirls	L 54-69	3123
Field goal pct	.418	.378	* 01/23/10	SAN DIEGO ST AZTECS	w 73-63	974
3 POINT FG-ATT	112-312	84-274	* 01/27/10	NEW MEXICO LOBOS	L 57-60	775
3-point FG pct	.359	.307	* 01/30/10	at Utah	w 69-52	3155
3-pt FG made per game	7.0	5.3	* 02/03/10	at TCU	L 40-64	2328
FREE THROWS-ATT	138-195	211-309	* 02/06/10	UNLV REBELS	w 76-60	896
Free throw pct	.708	.683	* 02/13/10	at Air Force	w 78-53	210
F-Throws made per game	8.6	13.2	* 2/17/10	COLORADO STATE	w 72-54	807
REBOUNDS	570	573	* 2/20/10	WY	w 51-48	1147
Rebounds per game	35.6	35.8	* 2-24-10	at San Diego State	L 71-73	713
Rebounding margin	-0.2	-	* 2/27/10	at New Mexico	L 30-62	8360
ASSISTS	274	200	* 3/3/2010	UTAH UTES	w 54-37	1783
Assists per game	17.1	12.5	* 3/6/2010	TC HORNED FROGS	w 70-65	1381
TURNOVERS	249	276				
Turnovers per game	15.6	17.3				
Turnover margin	+1.7	-				
Assist/turnover ratio	1.1	0.7				
STEALS	142	113				
Steals per game	8.9	7.1				
BLOCKS	54	31				
Blocks per game	3.4	1.9				
ATTENDANCE	8502	19848				
Home games-Avg/Game	8-1063	8-2481				
Neutral site-Avg/Game	-	0-0				

Score by Periods	1st	2nd	Totals
Brigham Young Univer	493	517	1010
Opponents	416	509	925

* = Conference game

THE STAT CREW SYSTEM
Brigham Young University Team Game-by-Game (as of Mar 06, 2010)
All games

TEAM STATISTICS

Opponent	Date	Score		Total		3-Pointers		Free throws		Rebounds				pf	a	t/o	blk	stl	pts	avg
				fg-fga	pct	3fg-fga	pct	ft-fa	pct	off	def	tot	avg							
UT VALLEY WOLVERINES	11-13-09	73-51	W	29-74	.392	9-30	.300	6-13	.462	26	20	46	46.0	25	21	14	4	12	73	73.0
at Washington	11/18/09	66-67	L	21-42	.500	10-18	.556	14-26	.538	8	24	32	39.0	26	12	31	0	9	66	69.5
at Montana State	11/20/09	79-54	W	25-51	.490	8-14	.571	21-36	.583	15	35	50	42.7	19	12	18	3	10	79	72.7
at Southern Utah	11/24/09	72-39	W	30-65	.462	7-18	.389	5-7	.714	12	32	44	43.0	16	12	17	7	20	72	72.5
KANSAS STATE	11/27/09	62-65	L	24-60	.400	7-21	.333	7-12	.583	20	20	40	42.4	18	13	17	3	7	62	70.4
vs USF	12/04/09	72-60	W	29-59	.492	6-19	.316	8-11	.727	12	25	37	41.5	16	21	17	2	11	72	70.7
vs UH	12/5/09	81-44	W	30-60	.500	12-28	.429	9-14	.643	17	27	44	41.9	20	23	18	2	8	81	72.1
at Weber State	12-09-09	61-62	Lot	24-67	.358	3-14	.214	10-22	.455	22	25	47	42.5	26	11	28	5	11	61	70.8
at Cal State Fullerton	12/12/09	75-72	W	27-55	.491	7-16	.438	14-19	.737	13	28	41	42.3	16	15	22	4	3	75	71.2
at Utah State	12/19/09	61-48	W	23-57	.404	5-18	.278	10-17	.588	15	27	42	42.3	20	18	18	2	9	61	70.2
PORTLAND PILOTS	12-31-09	69-57	W	30-74	.405	6-24	.250	3-5	.600	15	22	37	41.8	15	20	6	4	8	69	70.1
NEVADA WOLFPACK	1-02-10	61-41	W	21-53	.396	7-18	.389	12-15	.800	12	22	34	41.2	17	16	21	7	14	61	69.3
at UNLV	01/06/10	71-61	W	27-65	.415	8-26	.308	9-12	.750	15	25	40	41.1	15	20	11	0	7	71	69.5
AIR FORCE ACADEMY	01-13-10	77-46	W	33-55	.600	8-17	.471	3-7	.429	8	19	27	40.1	12	29	13	8	18	77	70.0
at Colorado State	01/16/10	67-58	W	23-54	.426	8-16	.500	13-19	.684	12	23	35	39.7	17	16	21	1	12	67	69.8
at Wyoming Cowgirls	1/19/10	54-69	L	22-58	.379	1-12	.083	9-10	.900	11	21	32	39.2	22	12	11	2	8	54	68.8
SAN DIEGO ST AZTECS	01/23/10	73-63	W	24-55	.436	5-15	.333	20-23	.870	16	23	39	39.2	13	18	24	3	9	73	69.1
NEW MEXICO LOBOS	01/27/10	57-60	L	22-51	.431	4-19	.211	9-14	.643	10	29	39	39.2	20	13	14	4	4	57	68.4
at Utah	01/30/10	69-52	W	25-53	.472	10-25	.400	9-12	.750	8	30	38	39.2	20	18	16	4	7	69	68.4
at TCU	02/03/10	40-64	L	16-62	.258	5-22	.227	3-3	1.000	16	14	30	38.7	13	11	16	5	10	40	67.0
UNLV REBELS	02/06/10	76-60	W	30-62	.484	11-25	.440	5-9	.556	9	26	35	38.5	19	28	10	3	5	76	67.4
at Air Force	02/13/10	78-53	W	31-58	.534	7-16	.438	9-11	.818	8	19	27	38.0	18	20	11	3	18	78	67.9
COLORADO STATE	2/17/10	72-54	W	28-65	.431	9-19	.474	7-11	.636	12	33	45	38.3	13	21	16	4	7	72	68.1
WY	2/20/10	51-48	W	19-53	.358	6-15	.400	7-14	.500	10	27	37	38.2	21	8	15	6	8	51	67.4
at San Diego State	2-24-10	71-73	L	26-57	.456	8-19	.421	11-13	.846	13	20	33	38.0	10	16	17	3	6	71	67.5
at New Mexico	2/27/10	30-62	L	9-49	.184	4-19	.211	8-17	.471	11	26	37	38.0	16	7	18	5	3	30	66.1
UTAH UTES	3/3/2010	54-37	W	19-54	.352	10-25	.400	6-7	.857	12	25	37	38.0	17	14	18	2	10	54	65.6
TC HORNERED FROGS	3/6/2010	70-65	W	26-59	.441	8-22	.364	10-13	.769	8	31	39	38.0	22	23	18	1	10	70	65.8
Brigham Young University		1842		693-1627	.426	199-550	.362	257-392	.656	366	698	1064	38.0	502	468	476	97	264	1842	65.8
Opponents		1585		542-1463	.370	126-431	.292	375-545	.688	327	638	965	34.5	384	307	509	54	197	1585	56.6

Games played: 28
Points/game: 65.8
FG Pct: 42.6
3FG Pct: 36.2
FT Pct: 65.6

Rebounds/game: 38.0
Assists/game: 16.7
Turnovers/game: 17.0
Assist/turnover ratio: 1.0
Steals/game: 9.4
Blocks/game: 3.5

THE STAT CREW SYSTEM
Brigham Young University Team Game-by-Game Comparison (as of Mar 06, 2010)
All games

Opponent	1st	2nd	Score	Mar	Total FG	FG Pct	3-Pointers	3FG Pct	Free Throws	FT Pct	Rebounds	Assist	T/Over	Block	Steal	Fouls
UT VALLEY WOLVERINES	45/26	28/25	73-51	+22	29-74/15-41	.392/.366	9-30/1-11	.300/.091	6-13/20-23	.462/.870	46/32 +14	21/4	14/22	4/1	12/2	25/15
Washington	34/30	32/37	66-67	(1)	21-42/23-58	.500/.397	10-18/2-6	.556/.333	14-26/19-27	.538/.704	32/30 +2	12/12	31/22	0/4	9/12	26/22
Montana State	38/29	41/25	79-54	+25	25-51/22-70	.490/.314	8-14/3-21	.571/.143	21-36/7-14	.583/.500	50/36 +14	12/7	18/16	3/1	10/9	19/22
Southern Utah	48/24	24/15	72-39	+33	30-65/14-50	.462/.280	7-18/4-15	.389/.267	5-7/7-13	.714/.538	44/33 +11	12/9	17/25	7/5	20/7	16/6
KANSAS STATE	25/30	37/35	62-65	(3)	24-60/23-49	.400/.469	7-21/10-19	.333/.526	7-12/9-12	.583/.750	40/26 +14	13/9	17/15	3/2	7/5	18/16
USF	41/20	31/40	72-60	+12	29-59/22-51	.492/.431	6-19/6-13	.316/.462	8-11/10-21	.727/.476	37/30 +7	21/12	17/16	2/1	11/8	16/11
UH	48/16	33/28	81-44	+37	30-60/16-54	.500/.296	12-28/3-14	.429/.214	9-14/9-17	.643/.529	44/32 +12	23/9	18/20	2/3	8/6	20/15
Weber State	17/23	32/26	61-62	(1)	24-67/20-45	.358/.444	3-14/1-5	.214/.200	10-22/21-30	.455/.700	47/31 +16	11/13	28/22	5/0	11/8	26/16
Cal State Fullerton	28/29	47/43	75-72	+3	27-55/24-62	.491/.387	7-16/7-20	.438/.350	14-19/17-20	.737/.850	41/28 +13	15/8	22/9	4/0	3/6	16/20
Utah State	30/31	31/17	61-48	+13	23-57/17-46	.404/.370	5-18/1-9	.278/.111	10-17/13-22	.588/.591	42/30 +12	18/9	18/19	2/2	9/8	20/15
PORTLAND PILOTS	40/29	29/28	69-57	+12	30-74/19-55	.405/.345	6-24/3-10	.250/.300	3-5/16-18	.600/.889	37/46 (9)	20/7	6/19	4/4	8/3	15/8
NEVADA WOLFPACK	31/18	30/23	61-41	+20	21-53/12-48	.396/.250	7-18/1-14	.389/.071	12-15/16-19	.800/.842	34/38 (4)	16/8	21/28	7/0	14/10	17/14
UNLV	32/22	39/39	71-61	+10	27-65/22-53	.415/.415	8-26/5-18	.308/.278	9-12/12-17	.750/.706	40/36 +4	20/12	11/17	0/2	7/2	15/14
AIR FORCE ACADEMY	41/22	36/24	77-46	+31	33-55/19-53	.600/.358	8-17/3-9	.471/.333	3-7/5-8	.429/.625	27/33 (6)	29/9	13/22	8/0	18/4	12/12
Colorado State	38/25	29/33	67-58	+9	23-54/23-49	.426/.469	8-16/4-15	.500/.267	13-19/8-14	.684/.571	35/30 +5	16/12	21/26	1/1	12/10	17/17
Wyoming Cowgirls	30/27	24/42	54-69	(15)	22-58/21-52	.379/.404	1-12/12-27	.083/.444	9-10/15-23	.900/.652	32/42 (10)	12/17	11/17	2/1	8/5	22/12
SAN DIEGO ST AZTECS	33/31	40/32	73-63	+10	24-55/26-57	.436/.456	5-15/2-12	.333/.167	20-23/9-15	.870/.600	39/27 +12	18/18	24/20	3/3	9/11	13/17
NEW MEXICO LOBOS	29/35	28/25	57-60	(3)	22-51/18-54	.431/.333	4-19/7-17	.211/.412	9-14/17-26	.643/.654	39/34 +5	13/14	14/6	4/3	4/8	20/13
Utah	32/21	37/31	69-52	+17	25-53/17-52	.472/.327	10-25/3-12	.400/.250	9-12/15-24	.750/.625	38/33 +5	18/10	16/13	4/0	7/8	20/11
TCU	21/26	19/38	40-64	(24)	16-62/21-46	.258/.457	5-22/5-13	.227/.385	3-3/17-20	.000/.850	30/41 (11)	11/16	16/20	5/3	10/7	13/11
UNLV REBELS	33/30	43/30	76-60	+16	30-62/18-60	.484/.300	11-25/6-26	.440/.231	5-9/18-21	.556/.857	35/43 (8)	28/11	10/16	3/0	5/5	19/10
Air Force	37/27	41/26	78-53	+25	31-58/19-48	.534/.396	7-16/6-19	.438/.316	9-11/9-15	.818/.600	27/34 (7)	20/10	11/26	3/0	18/6	18/14
COLORADO STATE	36/25	36/29	72-54	+18	28-65/20-54	.431/.370	9-19/5-17	.474/.294	7-11/9-15	.636/.600	45/33 +12	21/14	16/15	4/4	7/7	13/11
WY	25/22	26/26	51-48	+3	19-53/12-43	.358/.279	6-15/7-20	.400/.350	7-14/17-28	.500/.607	37/37 -	8/7	15/17	6/2	8/8	21/14
San Diego State	38/36	33/37	71-73	(2)	26-57/28-57	.456/.491	8-19/5-14	.421/.357	11-13/12-18	.846/.667	33/31 +2	16/19	17/13	3/4	6/9	10/9
New Mexico	11/30	19/32	30-62	(32)	9-49/20-61	.184/.328	4-19/6-23	.211/.261	8-17/16-17	.471/.941	37/49 (12)	7/12	18/8	5/3	3/9	16/15
UTAH UTES	29/14	25/23	54-37	+17	19-54/12-43	.352/.279	10-25/2-13	.400/.154	6-7/11-20	.857/.550	37/35 +2	14/6	18/22	2/5	10/7	17/9
TC HORNE FROGS	28/23	42/42	70-65	+5	26-59/19-52	.441/.365	8-22/6-19	.364/.316	10-13/21-28	.769/.750	39/35 +4	23/13	18/18	1/0	10/7	22/15

Note: Game totals are displayed in the format TEAM/OPPONENT for each category

THE STAT CREW SYSTEM
Brigham Young University Game-by-Game Highs (as of Mar 06, 2010)
All games

Opponent	Date	Score	Points	Rebounds	Assists	Steals	Blocked shots
UT VALLEY WOLVERINES	11-13-09	73-51	14-BONHAM, Mindy MOEAKI, Keilani	8-WOOD, Coriann	8-HALL, Haley	3-BONHAM, Mindy	2-RILEY, Kristen
at Washington	11/18/09	66-67	14-HALL, Haley	5-WOOD, Coriann HALL, Haley	4-HALL, Haley	4-HALL, Haley	None
at Montana State	11/20/09	79-54	12-HALL, Haley KAUFUSI, Alexis RILEY, Kristen	9-PETERSON, Dani KAUFUSI, Alexis	3-FOREMAN, Jazmin	2-PARKER, Kim FOREMAN, Jazmin BONHAM, Mindy	2-RILEY, Kristen
at Southern Utah	11/24/09	72-39	12-WOOD, Coriann KAUFUSI, Alexis	11-KAUFUSI, Alexis	3-BONHAM, Mindy HALL, Haley	5-HALL, Haley	2-RILEY, Kristen
KANSAS STATE	11/27/09	62-65	13-BONHAM, Mindy	8-BONHAM, Mindy KAUFUSI, Alexis	4-HALL, Haley FOREMAN, Jazmin	2-HALL, Haley BONHAM, Mindy RILEY, Kristen	2-WOOD, Coriann
vs USF	12/04/09	72-60	15-RILEY, Kristen	7-KAUFUSI, Alexis	5-FOREMAN, Jazmin	3-BONHAM, Mindy KAUFUSI, Alexis HALL, Haley	1-WOOD, Coriann MOEAKI, Keilani
vs UH	12/5/09	81-44	21-FOREMAN, Jazmi	9-WOOD, Coriann	4-FOREMAN, Jazmin HALL, Haley JUDKINS, Jaime	5-FOREMAN, Jazmin	1-WOOD, Coriann LEACH, Megan
at Weber State	12-09-09	61-62	18-BONHAM, Mindy	11-WOOD, Coriann	7-HALL, Haley	6-FOREMAN, Jazmin	2-RILEY, Kristen
at Cal State Fullerton	12/12/09	75-72	24-BONHAM, Mindy	10-WOOD, Coriann	5-HALL, Haley	1-MOEAKI, Keilani BONHAM, Mindy HALL, Haley	2-BONHAM, Mindy
at Utah State	12/19/09	61-48	12-BONHAM, Mindy WOOD, Coriann	9-RILEY, Kristen	7-BONHAM, Mindy	4-HALL, Haley	1-PETERSON, Dani RILEY, Kristen
PORTLAND PILOTS	12-31-09	69-57	17-WOOD, Coriann	7-RILEY, Kristen	6-FOREMAN, Jazmin HALL, Haley	3-HALL, Haley	2-KAUFUSI, Alexis
NEVADA WOLFPACK	1-02-10	61-41	12-WOOD, Coriann	6-HALL, Haley	6-FOREMAN, Jazmin	4-HALL, Haley	2-BONHAM, Mindy WOOD, Coriann PETERSON, Dani
at UNLV	01/06/10	71-61	19-FOREMAN, Jazmin	10-WOOD, Coriann	9-BONHAM, Mindy	2-BONHAM, Mindy RILEY, Kristen HALL, Haley	None
AIR FORCE ACADEMY	01-13-10	77-46	19-FOREMAN, Jazmin	5-KAUFUSI, Alexis	9-BONHAM, Mindy	4-JUDKINS, Jaime FOREMAN, Jazmine	2-KAUFUSI, Alexis HALL, Haley
at Colorado State	01/16/10	67-58	21-WOOD, Coriann	9-RILEY, Kristen	6-FOREMAN, Jazmin	4-FOREMAN, Jazmin	1-PETERSON, Dani
at Wyoming Cowgirls	1/19/10	54-69	11-KAUFUSI, Alexis HALL, Haley	7-RILEY, Kristen	3-FOREMAN, Jazmin HALL, Haley	3-HALL, Haley	1-FOREMAN, Jazmin RILEY, Kristen
SAN DIEGO ST AZTECS	01/23/10	73-63	16-RILEY, Kristen	11-RILEY, Kristen	6-BONHAM, Mindy	3-BONHAM, Mindy FOREMAN, Jazmine RILEY, Kristen	1-KAUFUSI, Alexis RILEY, Kristen WOOD, Coriann
NEW MEXICO LOBOS	01/27/10	57-60	18-BONHAM, Mindy	11-KAUFUSI, Alexis	3-BONHAM, Mindy HALL, Haley FOREMAN, Jazmine	2-HALL, Haley	2-KAUFUSI, Alexis
at Utah	01/30/10	69-52	24-HALL, Haley	9-HALL, Haley	7-BONHAM, Mindy	3-HALL, Haley	2-LEACH, Megan
at TCU	02/03/10	40-64	9-MOEAKI, Keilani	5-PETERSON, Dani BONHAM, Mindy	5-FOREMAN, Jazmin	4-FOREMAN, Jazmin	2-WOOD, Coriann
UNLV REBELS	02/06/10	76-60	22-HALL, Haley	7-WOOD, Coriann	11-FOREMAN, Jazmin	2-HALL, Haley	1-PETERSON, Dani FOREMAN, Jazmine KAUFUSI, Alexis
at Air Force	02/13/10	78-53	17-FOREMAN, Jazmin	6-RILEY, Kristen	5-FOREMAN, Jazmin	5-FOREMAN, Jazmin	1-LEACH, Megan WOOD, Coriann MOEAKI, Keilani
COLORADO STATE	2/17/10	72-54	18-WOOD, Coriann	9-RILEY, Kristen	9-HALL, Haley	2-HALL, Haley	2-WOOD, Coriann

THE STAT CREW SYSTEM
Brigham Young University Game-by-Game Highs (as of Mar 06, 2010)
All games

Opponent	Date	Score	Points	Rebounds	Assists	Steals	Blocked shots
WY	2/20/10	51-48	13-FOREMAN,Jazmin	8-RILEY,Kristen	3-MOEAKI,Keilani	BONHAM,Mindy FOREMAN,Jazmine	3-MOEAKI,Keilani
at San Diego State	2-24-10	71-73	19-BONHAM,Mindy	9-RILEY,Kristen	5-BONHAM,Mindy	5-HALL, Haley 3-RILEY,Kristen	1-BONHAM,Mindy RILEY,Kristen WOOD,Coriann
at New Mexico	2/27/10	30-62	7-BONHAM,Mindy	5-PETERSON,Dani	2-HALL, Haley	1-HALL, Haley WOOD,Coriann RILEY,Kristen	2-WOOD,Coriann
UTAH UTES	3/3/2010	54-37	13-HALL, Haley	7-RILEY,Kristen	4-WOOD,Coriann	6-BONHAM,Mindy	1-RILEY,Kristen BONHAM,Mindy
TC HORNED FROGS	3/6/2010	70-65	17-HALL, Haley	10-RILEY,Kristen	9-BONHAM,Mindy	5-HALL, Haley	1-RILEY,Kristen

THE STAT CREW SYSTEM
Brigham Young University Points-Rebounds-Assists (as of Mar 06, 2010)
All games

Opponent	Date	Score		01	03	4	10	13	21	22
				JACKSON,JE	FOREMAN,JA	PARKER,KIM	KAUFUSI,AL	JUDKINS,JA	BATES,STEP	BONHAM,MIN
UT VALLEY WOLVERINES	11-13-09	73-51	w	2-1-2	7-1-2	0-3-0	4-1-0	3-3-1	1-1-1	14-1-2
at Washington	11/18/09	66-67	L	3-0-0	1-2-1	5-1-0	5-3-1	DNP	DNP	10-4-3
at Montana State	11/20/09	79-54	w	1-1-0	4-4-3	3-4-1	12-9-2	6-1-0	0-2-0	11-5-2
at Southern Utah	11/24/09	72-39	w	0-1-1	7-3-2	5-1-1	12-11-0	5-0-0	3-0-0	9-4-3
KANSAS STATE	11/27/09	62-65	L	DNP	11-6-4	3-1-0	9-8-0	DNP	DNP	13-8-3
vs USF	12/04/09	72-60	w	0-1-0	7-4-5	3-2-1	12-7-1	0-1-1	DNP	14-4-3
vs UH	12/5/09	81-44	w	2-2-1	21-1-4	5-5-2	2-7-0	3-3-4	3-0-0	5-1-3
at Weber State	12-09-09	61-62	L	DNP	11-6-2	0-1-0	2-3-0	DNP	DNP	18-6-0
at Cal State Fullerton	12/12/09	75-72	w	DNP	8-1-2	DNP	12-6-0	0-1-0	0-0-0	24-6-4
at Utah State	12/19/09	61-48	w	DNP	9-4-6	DNP	2-4-0	0-2-1	0-1-0	12-4-7
PORTLAND PILOTS	12-31-09	69-57	w	DNP	9-3-6	DNP	6-6-0	0-0-2	0-0-0	13-4-3
NEVADA WOLFPACK	1-02-10	61-41	w	DNP	9-3-6	DNP	6-4-0	4-0-0	0-1-0	2-4-3
at UNLV	01/06/10	71-61	w	DNP	19-3-3	DNP	10-3-1	0-0-0	DNP	11-5-9
AIR FORCE ACADEMY	01-13-10	77-46	w	DNP	19-2-2	DNP	6-5-0	0-1-2	0-0-0	8-4-9
at Colorado State	01/16/10	67-58	w	DNP	12-3-6	DNP	8-7-0	0-0-0	DNP	11-3-3
at Wyoming Cowgirls	1/19/10	54-69	L	DNP	8-6-3	DNP	11-3-0	DNP	DNP	8-0-2
SAN DIEGO ST AZTECS	01/23/10	73-63	w	DNP	13-9-5	DNP	2-1-0	DNP	DNP	13-3-6
NEW MEXICO LOBOS	01/27/10	57-60	L	DNP	9-3-3	DNP	10-11-1	2-0-0	DNP	18-5-3
at Utah	01/30/10	69-52	w	DNP	8-0-2	DNP	8-2-0	0-0-0	0-0-0	4-8-7
at TCU	02/03/10	40-64	L	DNP	5-2-5	DNP	4-2-0	0-0-1	3-0-0	4-5-3
UNLV REBELS	02/06/10	76-60	w	DNP	11-4-11	DNP	11-2-0	0-0-1	0-1-0	13-5-8
at Air Force	02/13/10	78-53	w	DNP	17-3-5	DNP	7-4-0	0-2-0	0-0-1	13-1-3
COLORADO STATE	2/17/10	72-54	w	DNP	4-2-3	DNP	7-4-0	0-0-0	DNP	14-3-5
WY	2/20/10	51-48	w	DNP	13-1-1	DNP	0-3-0	DNP	DNP	8-7-1
at San Diego State	2-24-10	71-73	L	DNP	12-6-3	DNP	6-1-0	DNP	DNP	19-5-5
at New Mexico	2/27/10	30-62	L	DNP	3-4-1	DNP	5-4-1	0-0-0	0-2-0	7-4-1
UTAH UTES	3/3/2010	54-37	w	DNP	11-0-3	DNP	3-5-0	DNP	DNP	12-4-1
TC HORNFED FROGS	3/6/2010	70-65	w	DNP	5-3-5	DNP	10-4-0	0-1-1	DNP	12-6-9

Opponent	Date	Score		23	31	32	33	35	45	55
				WOOD,CORIA	BECK,MARIE	PETERSON,D	HALL,HALEY	RILEY,KRIS	MOEAKI,KEI	LEACH,MEGA
UT VALLEY WOLVERINES	11-13-09	73-51	w	10-8-1	0-1-0	10-3-0	0-1-8	8-6-2	14-4-2	0-3-0
at Washington	11/18/09	66-67	L	11-5-1	DNP	0-1-0	14-5-4	6-3-1	11-2-1	DNP
at Montana State	11/20/09	79-54	w	5-5-0	3-0-0	8-9-1	12-1-1	12-6-0	2-0-2	0-1-0
at Southern Utah	11/24/09	72-39	w	12-7-0	0-1-0	4-3-2	7-1-3	6-2-0	2-4-0	0-1-0
KANSAS STATE	11/27/09	62-65	L	3-4-0	DNP	2-0-0	10-4-4	9-1-1	2-2-1	DNP
vs USF	12/04/09	72-60	w	7-2-1	DNP	4-5-0	8-2-4	15-5-3	2-1-2	DNP
vs UH	12/5/09	81-44	w	11-9-0	0-1-0	8-3-0	9-1-4	5-3-3	5-1-2	2-2-0
at Weber State	12-09-09	61-62	L	4-11-0	DNP	2-3-0	3-2-7	10-5-2	11-7-0	DNP
at Cal State Fullerton	12/12/09	75-72	w	16-10-2	DNP	0-1-0	6-4-5	4-7-2	5-1-0	DNP
at Utah State	12/19/09	61-48	w	12-2-0	0-0-0	0-3-0	7-5-3	11-9-0	8-6-1	0-1-0
PORTLAND PILOTS	12-31-09	69-57	w	17-6-1	0-0-0	8-1-0	10-5-6	4-7-1	2-2-1	DNP
NEVADA WOLFPACK	1-02-10	61-41	w	12-3-0	0-1-0	1-2-0	11-6-4	10-5-2	6-4-1	DNP
at UNLV	01/06/10	71-61	w	17-10-0	DNP	0-0-0	8-5-6	6-5-1	0-1-0	DNP
AIR FORCE ACADEMY	01-13-10	77-46	w	6-2-3	2-0-1	7-2-0	8-2-7	17-2-2	4-2-2	0-1-1
at Colorado State	01/16/10	67-58	w	21-5-1	DNP	2-1-0	5-5-5	5-9-1	3-1-0	DNP
at Wyoming Cowgirls	1/19/10	54-69	L	2-5-2	DNP	0-0-0	11-3-3	8-7-1	6-3-1	DNP
SAN DIEGO ST AZTECS	01/23/10	73-63	w	10-6-1	DNP	6-1-0	11-4-4	16-11-1	2-0-1	DNP
NEW MEXICO LOBOS	01/27/10	57-60	L	4-2-1	DNP	3-2-1	0-4-3	8-7-1	3-1-0	DNP
at Utah	01/30/10	69-52	w	10-4-1	0-1-0	0-4-2	24-9-4	9-4-1	6-1-1	0-1-0
at TCU	02/03/10	40-64	L	8-2-0	0-0-0	0-5-1	0-4-0	7-3-0	9-1-1	0-0-0
UNLV REBELS	02/06/10	76-60	w	8-7-1	0-0-0	6-2-0	22-3-3	3-3-2	2-2-2	0-0-0
at Air Force	02/13/10	78-53	w	10-2-3	2-0-0	6-3-0	2-3-4	10-6-0	9-1-3	2-0-1
COLORADO STATE	2/17/10	72-54	w	18-8-1	DNP	2-3-1	9-8-9	11-9-2	7-1-0	DNP
WY	2/20/10	51-48	w	11-4-1	DNP	3-2-0	12-6-2	4-8-0	0-2-3	DNP
at San Diego State	2-24-10	71-73	L	18-6-0	DNP	DNP	5-2-4	11-9-4	0-2-0	DNP
at New Mexico	2/27/10	30-62	L	6-4-1	0-1-0	2-5-0	3-2-2	0-4-0	4-4-1	0-2-0
UTAH UTES	3/3/2010	54-37	w	8-5-4	0-0-0	0-0-0	13-6-3	7-7-3	0-3-0	DNP
TC HORNFED FROGS	3/6/2010	70-65	w	8-5-1	DNP	DNP	17-3-6	12-10-1	6-1-0	DNP

THE STAT CREW SYSTEM
Brigham Young University Category Leaders (as of Mar 06, 2010)
All games

Points	G	Pts	Pts/G	Scoring Average	G	Pts	Avg/G
BONHAM, Mindy	28	320	11.4	BONHAM, Mindy	28	320	11.4
WOOD, Coriann	28	285	10.2	WOOD, Coriann	28	285	10.2
FOREMAN, Jazmine	28	273	9.8	FOREMAN, Jazmine	28	273	9.8
HALL, Haley	28	247	8.8	HALL, Haley	28	247	8.8
RILEY, Kristen	28	234	8.4	RILEY, Kristen	28	234	8.4
KAUFUSI, Alexis	28	192	6.9	KAUFUSI, Alexis	28	192	6.9
MOEAKI, Keilani	28	131	4.7	MOEAKI, Keilani	28	131	4.7
PETERSON, Dani	26	84	3.2	PETERSON, Dani	26	84	3.2
PARKER, Kim	8	24	3.0	PARKER, Kim	8	24	3.0
JUDKINS, Jaime	20	23	1.2	JACKSON, Jenteal	6	8	1.3
BATES, Stephanie	14	10	0.7	JUDKINS, Jaime	20	23	1.2
JACKSON, Jenteal	6	8	1.3	BATES, Stephanie	14	10	0.7

FG Percentage	FG	Att	Pct	Field Goal Attempts	G	Att	Att/G
RILEY, Kristen	89	187	.476	BONHAM, Mindy	28	280	10.0
KAUFUSI, Alexis	77	162	.475	HALL, Haley	28	246	8.8
BONHAM, Mindy	128	280	.457	WOOD, Coriann	28	235	8.4
WOOD, Coriann	102	235	.434	FOREMAN, Jazmine	28	215	7.7
MOEAKI, Keilani	52	120	.433	RILEY, Kristen	28	187	6.7
BECK, Marie	3	7	.429	Field Goals Made	G	Made	Made/G
FOREMAN, Jazmine	92	215	.428	BONHAM, Mindy	28	128	4.6
PARKER, Kim	8	19	.421	WOOD, Coriann	28	102	3.6
JUDKINS, Jaime	8	19	.421	FOREMAN, Jazmine	28	92	3.3
PETERSON, Dani	38	99	.384	HALL, Haley	28	91	3.3
HALL, Haley	91	246	.370	RILEY, Kristen	28	89	3.2
BATES, Stephanie	3	14	.214				

3-Point Percentage	3FG	Att	Pct	3-Point FG Attempts	G	Att	Att/G
KAUFUSI, Alexis	1	1	1.000	HALL, Haley	28	141	5.0
WOOD, Coriann	45	99	.455	FOREMAN, Jazmine	28	106	3.8
MOEAKI, Keilani	7	17	.412	WOOD, Coriann	28	99	3.5
FOREMAN, Jazmine	42	106	.396	BONHAM, Mindy	28	70	2.5
HALL, Haley	52	141	.369	RILEY, Kristen	28	46	1.6
PARKER, Kim	4	11	.364	3-Point FG Made	G	Made	Made/G
BONHAM, Mindy	25	70	.357	HALL, Haley	28	52	1.9
RILEY, Kristen	13	46	.283	WOOD, Coriann	28	45	1.6
JUDKINS, Jaime	4	15	.267	FOREMAN, Jazmine	28	42	1.5
BECK, Marie	1	4	.250	BONHAM, Mindy	28	25	0.9
BATES, Stephanie	3	14	.214	RILEY, Kristen	28	13	0.5
JACKSON, Jenteal	1	5	.200				

Free Throw Percent	FG	Att	Pct	Free Throw Attempts	G	Att	Att/G
LEACH, Megan	4	5	.800	RILEY, Kristen	28	74	2.6
BONHAM, Mindy	39	49	.796	KAUFUSI, Alexis	28	63	2.3
FOREMAN, Jazmine	47	60	.783	FOREMAN, Jazmine	28	60	2.1
WOOD, Coriann	36	49	.735	BONHAM, Mindy	28	49	1.8
HALL, Haley	13	20	.650	WOOD, Coriann	28	49	1.8
JUDKINS, Jaime	3	5	.600	Free Throws Made	G	Made	Made/G
MOEAKI, Keilani	20	34	.588	FOREMAN, Jazmine	28	47	1.7
KAUFUSI, Alexis	37	63	.587	RILEY, Kristen	28	43	1.5
RILEY, Kristen	43	74	.581	BONHAM, Mindy	28	39	1.4
PARKER, Kim	4	7	.571	KAUFUSI, Alexis	28	37	1.3
BATES, Stephanie	1	2	.500	WOOD, Coriann	28	36	1.3
PETERSON, Dani	7	16	.438				

THE STAT CREW SYSTEM
Brigham Young University Category Leaders (as of Mar 06, 2010)
All games

Rebounds	G	Reb	Reb/G
RILEY, Kristen	28	163	5.8
WOOD, Coriann	28	149	5.3
KAUFUSI, Alexis	28	130	4.6
BONHAM, Mindy	28	119	4.3
HALL, Haley	28	106	3.8

Assists	G	No.	Ast/G
HALL, Haley	28	118	4.2
BONHAM, Mindy	28	111	4.0
FOREMAN, Jazmine	28	104	3.7
RILEY, Kristen	28	37	1.3
MOEAKI, Keilani	28	28	1.0

Rebound Average	G	Reb	Avg/G
RILEY, Kristen	28	163	5.8
WOOD, Coriann	28	149	5.3
KAUFUSI, Alexis	28	130	4.6
BONHAM, Mindy	28	119	4.3
HALL, Haley	28	106	3.8

Steals	G	No.	Stl/G
HALL, Haley	28	67	2.4
FOREMAN, Jazmine	28	55	2.0
BONHAM, Mindy	28	51	1.8
RILEY, Kristen	28	32	1.1
KAUFUSI, Alexis	28	12	0.4

Offensive Rebounds	G	No.	Avg/G
RILEY, Kristen	28	63	2.3
WOOD, Coriann	28	46	1.6
KAUFUSI, Alexis	28	44	1.6
BONHAM, Mindy	28	38	1.4
HALL, Haley	28	28	1.0

Blocked Shots	G	No.	Blk/G
WOOD, Coriann	28	23	0.8
RILEY, Kristen	28	18	0.6
KAUFUSI, Alexis	28	13	0.5
LEACH, Megan	11	9	0.8
PETERSON, Dani	26	9	0.3

Defensive Rebounds	G	No.	Avg/G
WOOD, Coriann	28	103	3.7
RILEY, Kristen	28	100	3.6
KAUFUSI, Alexis	28	86	3.1
BONHAM, Mindy	28	81	2.9
HALL, Haley	28	78	2.8

Minutes	G	No.	Min/G
BONHAM, Mindy	28	925	33.0
HALL, Haley	28	909	32.5
FOREMAN, Jazmine	28	874	31.2
WOOD, Coriann	28	643	23.0
RILEY, Kristen	28	611	21.8

Fouls	G	No.	Per/G
WOOD, Coriann	28	80	2.9
FOREMAN, Jazmine	28	71	2.5
RILEY, Kristen	28	69	2.5
HALL, Haley	28	65	2.3
BONHAM, Mindy	28	52	1.9

Turnovers	G	No.	TO/G
BONHAM, Mindy	28	86	3.1
FOREMAN, Jazmine	28	75	2.7
KAUFUSI, Alexis	28	56	2.0
HALL, Haley	28	55	2.0
RILEY, Kristen	28	53	1.9

Foulsouts	G	No.
WOOD, Coriann	28	3
HALL, Haley	28	2
RILEY, Kristen	28	2
FOREMAN, Jazmine	28	1
BONHAM, Mindy	28	1

2009-10 **BYU BASKETBALL** RADIO/TV ROSTER



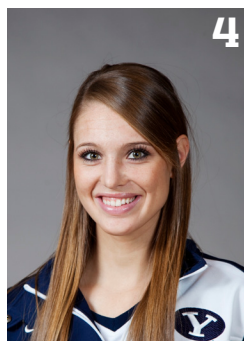
1

Jenteal Jackson
G, 5-7, So.
Salt Lake City, UT/Skyline HS



3

Jazmine Foreman
G, 5-5, Jr.
Vancouver, WA/Hudson's Bay HS



4

Kim Parker
G, 5-11, Fr.
Heber City, UT/Wasatch HS



10

Alexis Kaufusi
F/C, 6-1, Fr./RS
Provo, UT/Timpview HS



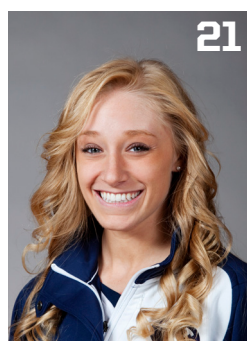
12

Stephanie Vermunt
G/F, 6-0, Fr.
Airdrie, Alberta, Canada/Bert Church HS



13

Jaime Judkins
G, 5-6, Sr.
Salt Lake City, UT/Skyline HS



21

Stephanie Buhler Bates
G/F, 6-0, So.
Oregon City, OR/Oregon City HS



22

Mindy Nielson
G, 5-10, Jr.
Centennial, CO/Regis Jesuit HS



23

Coriann Wood
F, 6-1, Jr.
Basin City, WA/Connell HS



31

Marie Beck
G, 5-8, Jr.
Oxnard, CA/Channel Islands HS



32

Dani Peterson
F, 6-1, So.
Salt Lake City, UT/Skyline HS



33

Haley Hall
G, 5-4, Jr.
Syracuse, UT/Clearfield HS



35

Kristen Riley
F, 6-3, So.
San Clemente, CA/San Clemente HS



45

Keilani Moeaki
F, 6-2, Jr.
Warrenville, IL
Wheaton Warrenville South HS



55

Megan Marks Leach
F, 6-2, Jr.
South Jordan, UT/Bingham HS



Jeff Judkins
Head Coach



Alli Bills
Assistant Coach



Stacy Jensen
Assistant Coach



Chris Boettcher
Assistant Coach



Dan Doerflein
Director of Basketball Operations